

V&V Reference Report

L2 ASCDS Version : 8.4.5

Observation 1735 - L2 Version 7
Chandra X-Ray Center

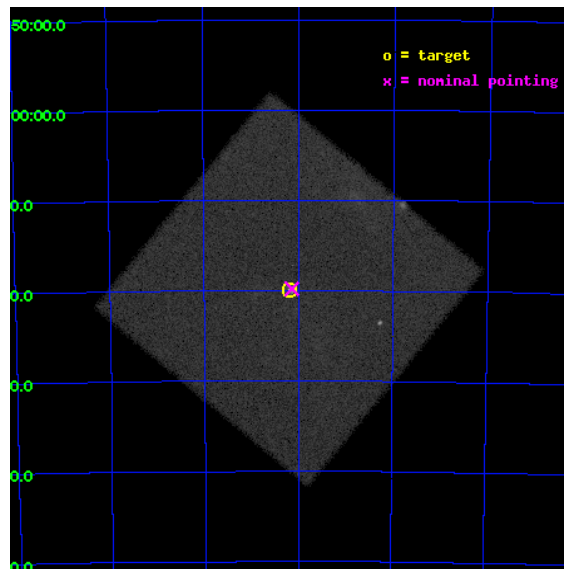
L2 Processing Date : Aug 29 2012

Contents

1	Front	2
2	OBI	3
2.1	OBI	3
2.1.1	Images	3
2.1.2	Parameters	4
2.1.3	Events	4
2.2	Compared Parameters	5
2.3	Aspect	6
2.4	Star Slots	9
2.4.1	Slot 3	9
2.4.2	Slot 4	10
2.4.3	Slot 5	11
2.4.4	Slot 6	12
2.4.5	Slot 7	13
2.5	FID Slots	14
2.5.1	Slot 0	14
2.5.2	Slot 1	15
2.5.3	Slot 2	16
A	Summary	17
A.1	Status	17
A.2	Comments	17

1 Front

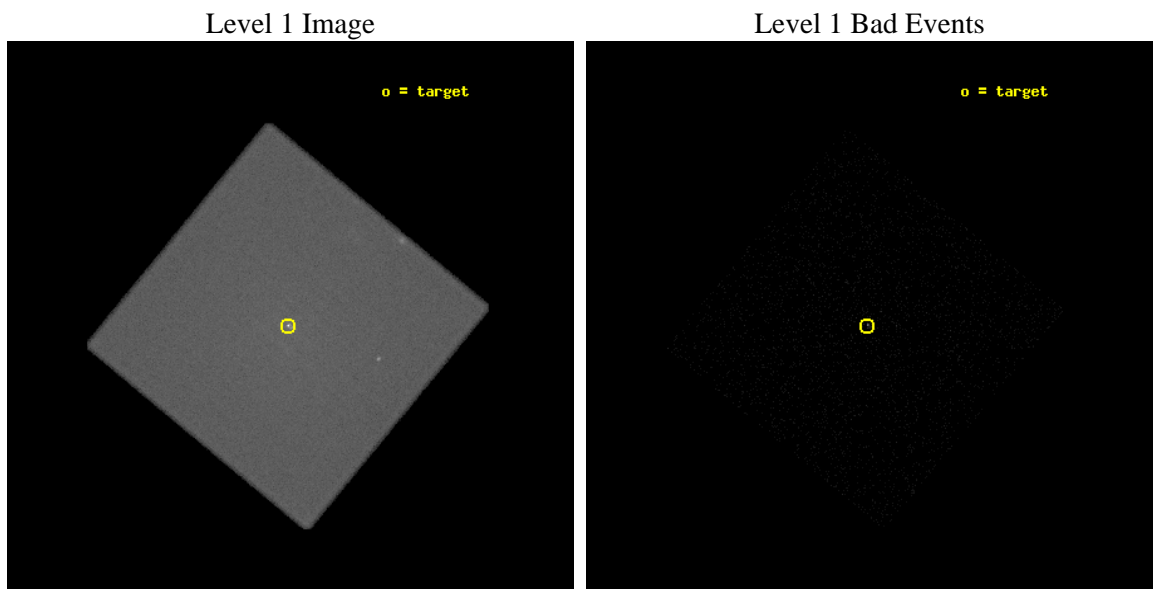
seq_num	590184	Sequence number
obs_id	1735	Observation id
title	VERIFICATION OF AXAF TIMING CAPABILITY	Proposal title
observer	Dr. CXC Calibration	Principal investigator
object	PSR B0540-69	Source name
ra_targ	85.04625	Observer's specified target RA [deg]
dec_targ	-69.332	Observer's specified target Dec [deg]
ra_nom	85.035042905981	Nominal RA [deg]
dec_nom	-69.3298902768	Nominal Dec [deg]
roll_nom	174.57393922306	Nominal Roll [deg]
revision	7	Processing version of data
ontime	10038.081619069	[s]
livetime	9931.4242731344	Ontime multiplied by DTCOR
l2events	269446	Number of level 2 events



2 OBI

2.1 OBI

2.1.1 Images



2.1.2 Parameters

obi_num	0	Obi number	sched_exp_time	9885.000000	[s] Scheduled observation exposure time
ascdsver	8.4.5	Processing system revision	ontime	10038.081620067	[s]
caldbver	4.5.1.1	 	l1events	1583247	Number of level 1 events
date	2012-08-29T07:47:37	Date and time of file creation			
revision	7	Processing version of data			

2.1.3 Events

Level 1 Events

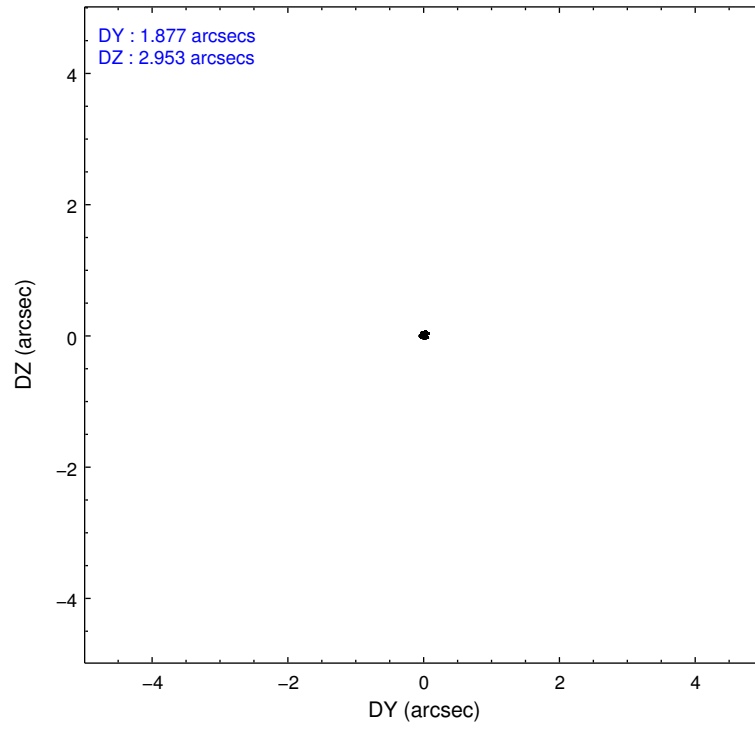
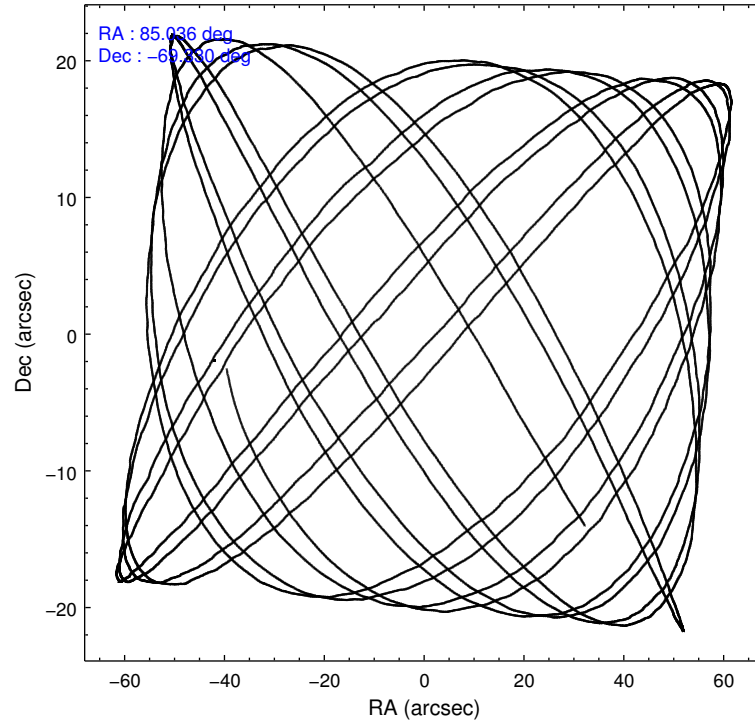
	segment 0
level 1 events	1583247
rejected events	37316
rejected %	2%

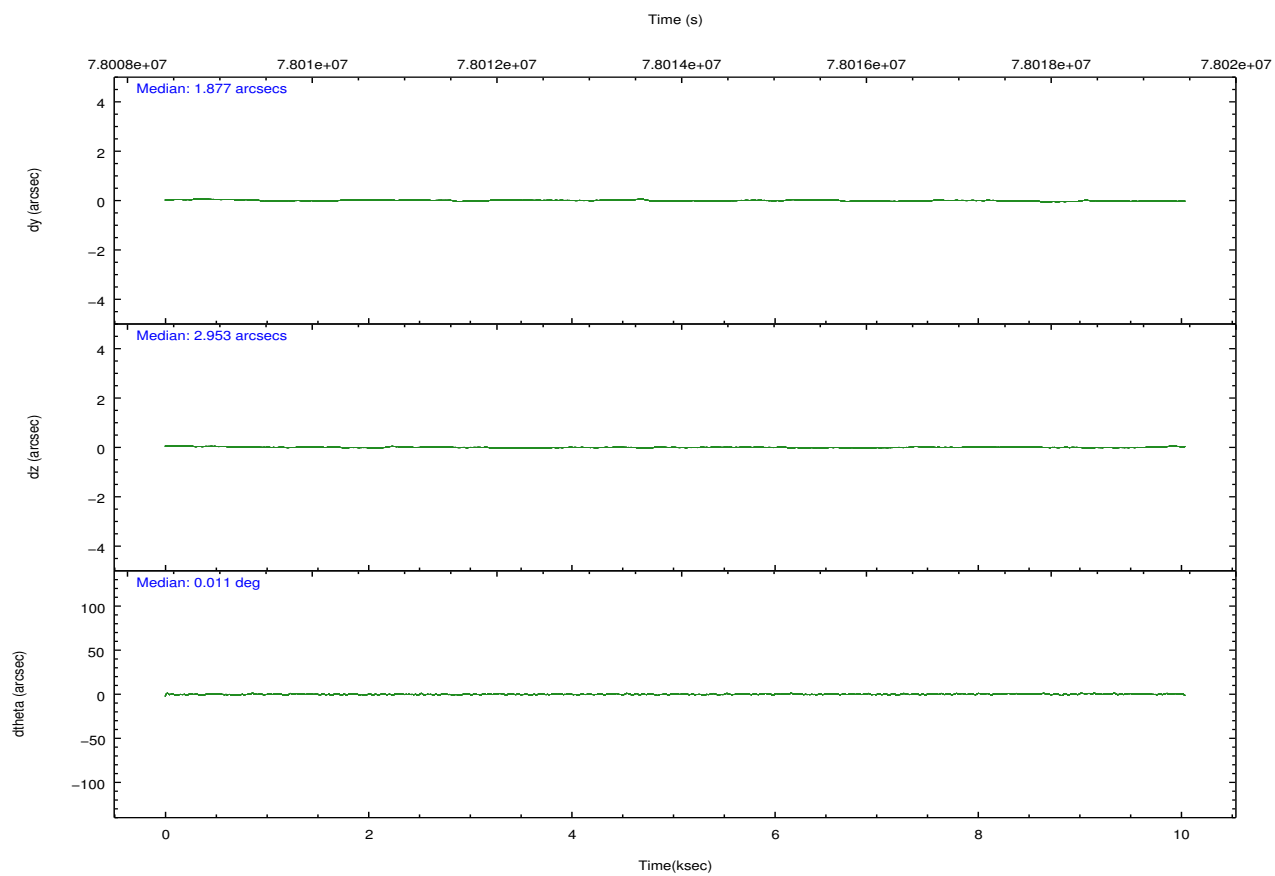
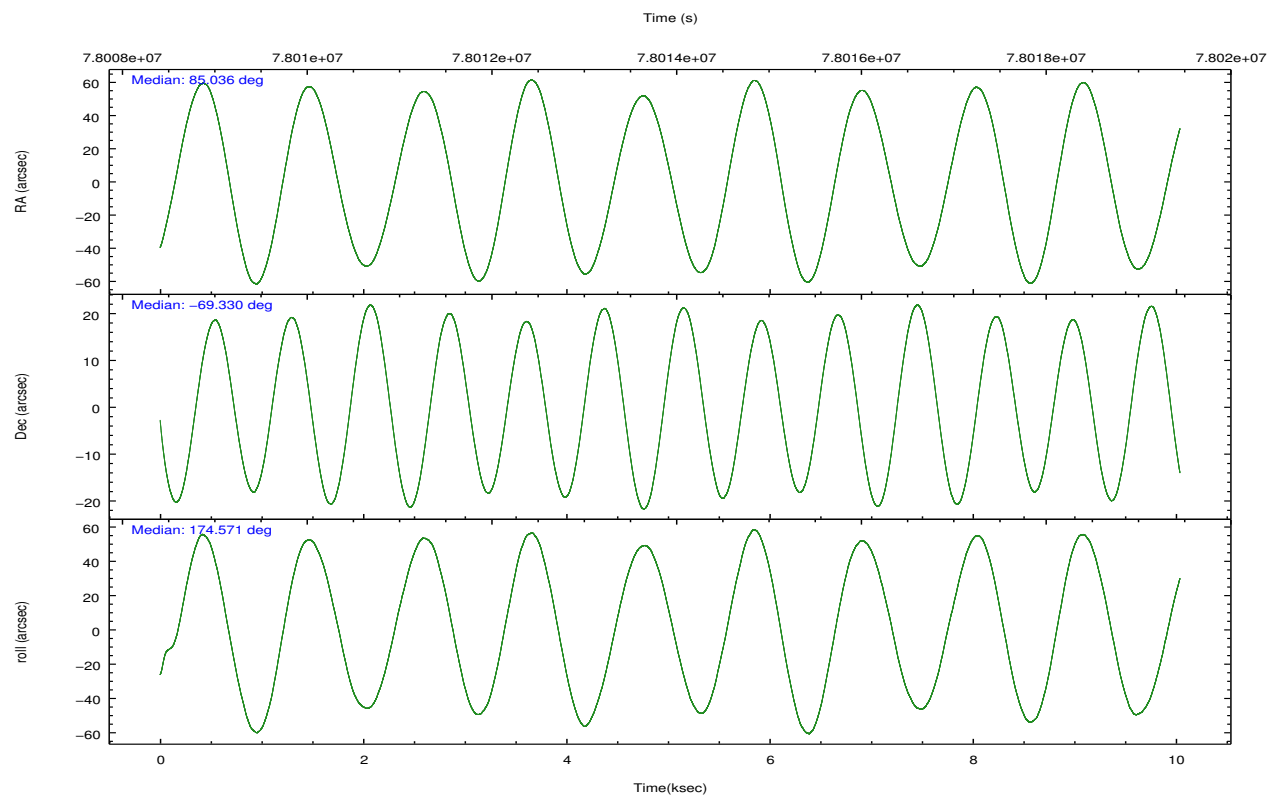
2.2 Compared Parameters

Parameter	Planned	Actual
Instrument	HRC	HRC
Detector	HRC-I	HRC-I
Grating	NONE	NONE
Data mode	OBSERVING	OBSERVING
Observation mode	POINTING	POINTING
[deg] Pointing RA	85.104874	85.035042905981
[deg] Pointing Dec	-69.318186	-69.32989027679983
[deg] Pointing Roll	174.734759	174.5739392230618
[mm] SIM focus pos	-1.040293	-1.038866356238299
[mm] SIM defocus	0	0.001426264420575141
[mm] SIM translation stage pos	126.985494	126.9829799899862
[mm] SIM translation stage offset	0	0.002508901615314585
[s] Observation start time (MET)	78009062.184000	78008662.385692
Observation start date	2000-06-21T21:09:58	2000-06-21T21:04:22
[s] Observation end time (MET)	78018947.184000	78019080.998576
Observation end date	2000-06-21T23:54:43	2000-06-21T23:58:00

Parameter	Planned	Actual
Obspar format version number	7	7
Obspar file type	PREDICTED	ACTUAL
Obspar update status	NONE	UPDATED

2.3 Aspect



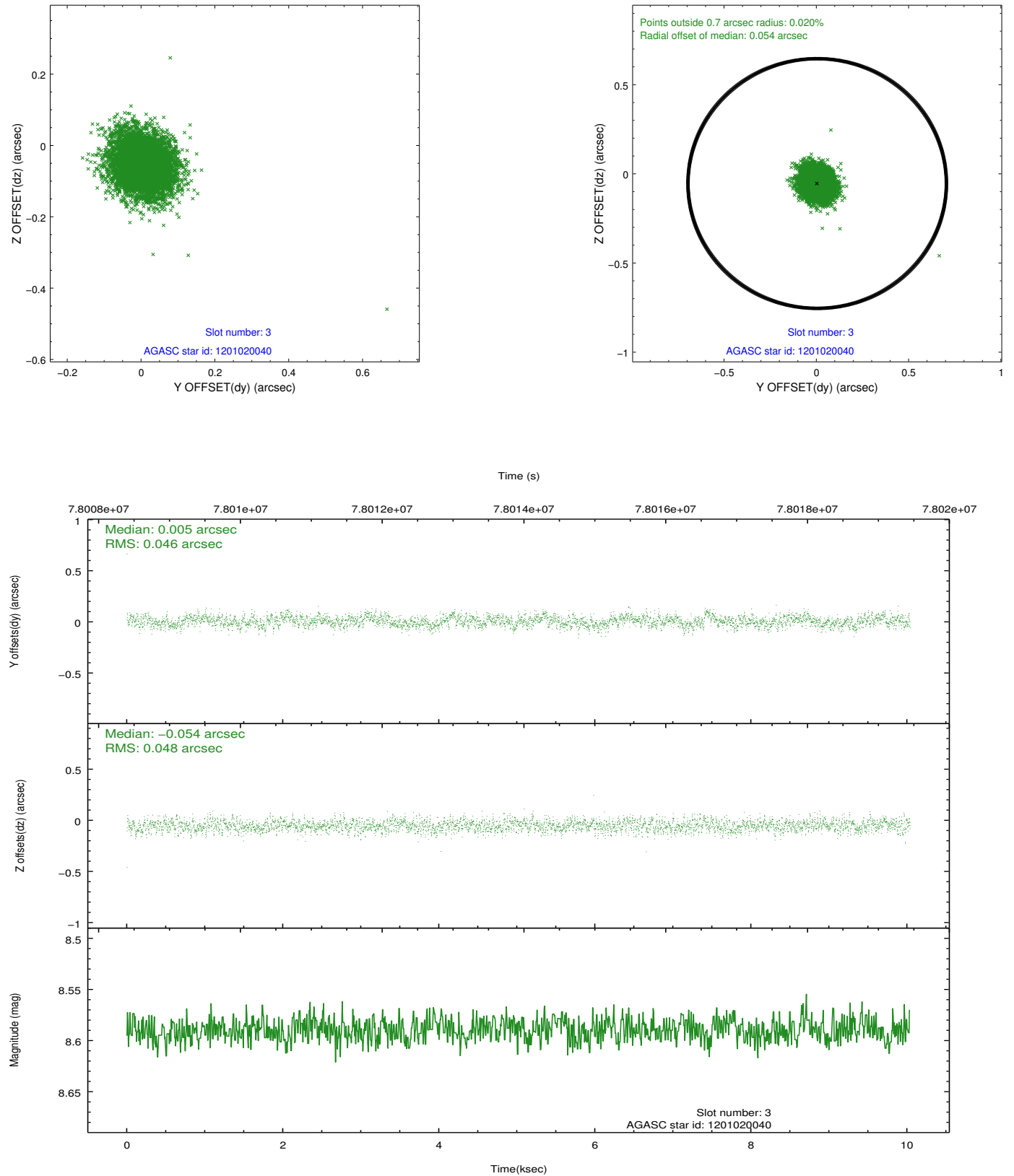


Slot Statistics

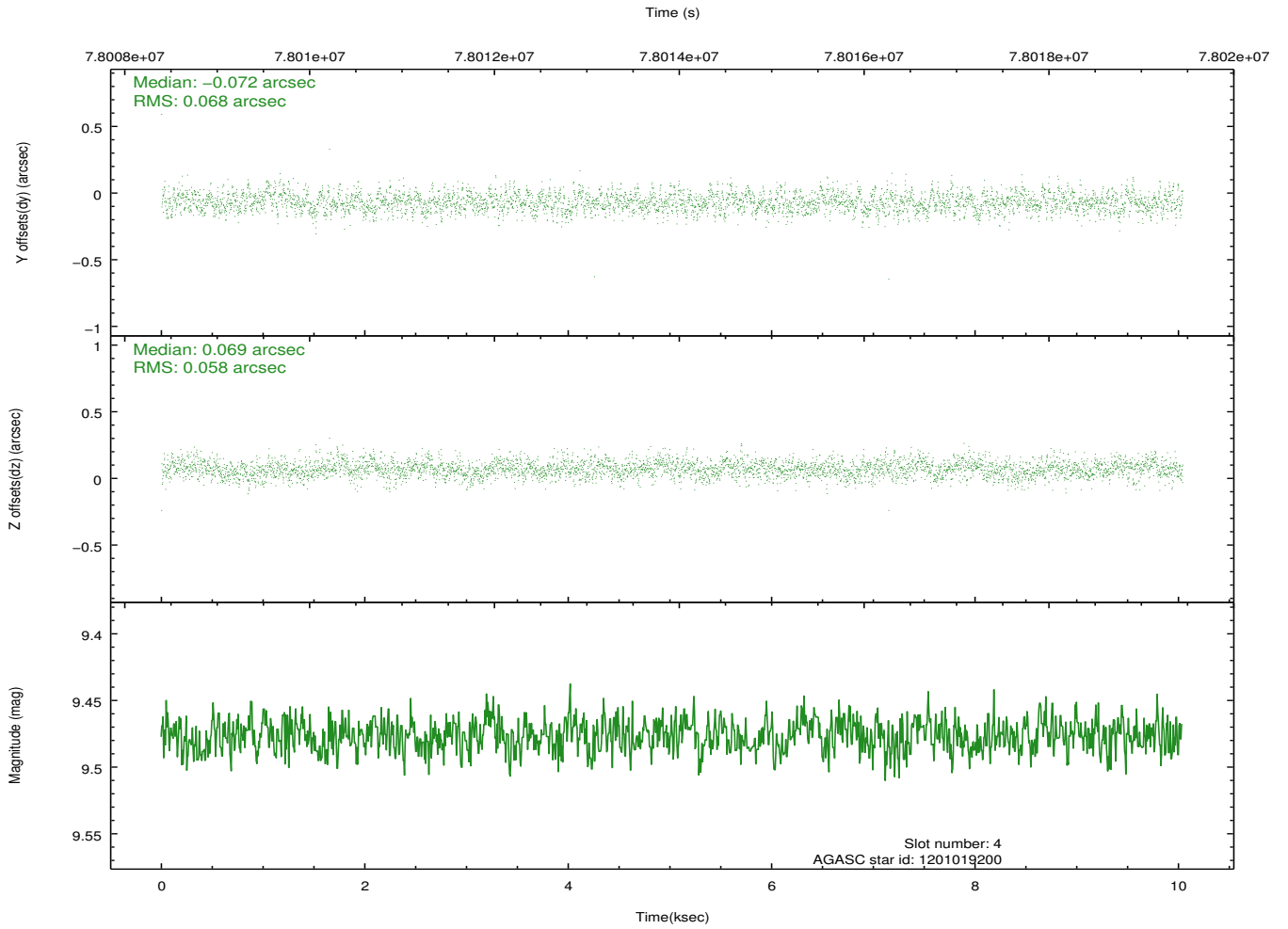
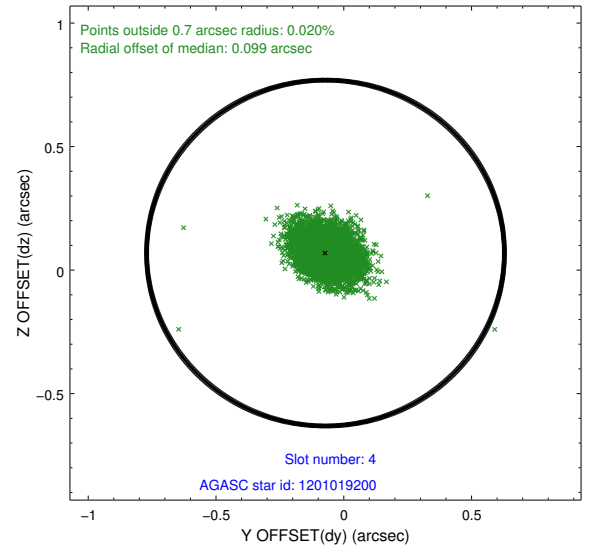
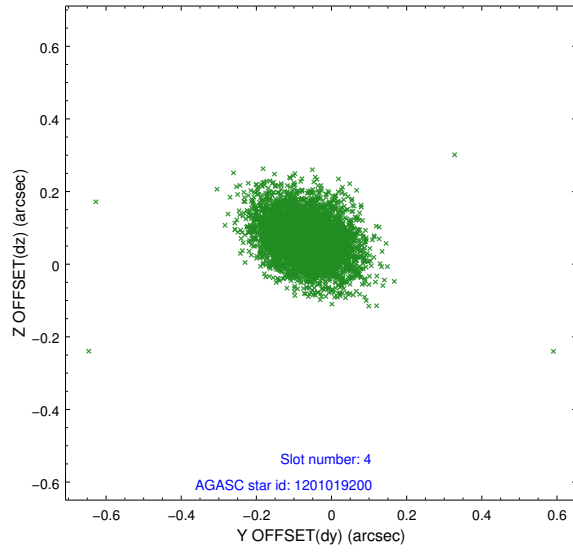
slot	status	id	mag	n_pts	med_dy	med_dz	dr1	dr2	ra	dec	mean_y	mean_z
0	FID	HRC-I-1	6.95	2449	0.067	0.024	0.006	0.010	0.000000	0.000000	-757.31	-1290.63
1	FID	HRC-I-3	7.03	2449	0.027	-0.046	0.006	0.011	0.000000	0.000000	-1186.06	1013.35
2	FID	HRC-I-4	6.98	2449	0.020	-0.067	0.005	0.008	0.000000	0.000000	1285.04	1011.78
3	GUIDE	1201020040	8.59	4892	0.005	-0.054	0.070	0.113	85.379163	-68.879396	-208.38	-1604.58
4	GUIDE	1201019200	9.48	4894	-0.072	0.069	0.092	0.156	84.213591	-68.777384	1335.46	-1823.57
5	GUIDE	1201406992	9.27	4897	0.065	-0.053	0.085	0.142	83.682859	-69.471866	1736.00	736.41
6	GUIDE	1200885760	9.47	4895	-0.088	0.071	0.101	0.164	83.723637	-68.777667	1970.33	-1751.68
7	GUIDE	1201020088	10.59	4893	0.087	-0.037	0.141	0.232	86.319248	-68.997756	-1454.21	-1277.18

2.4 Star Slots

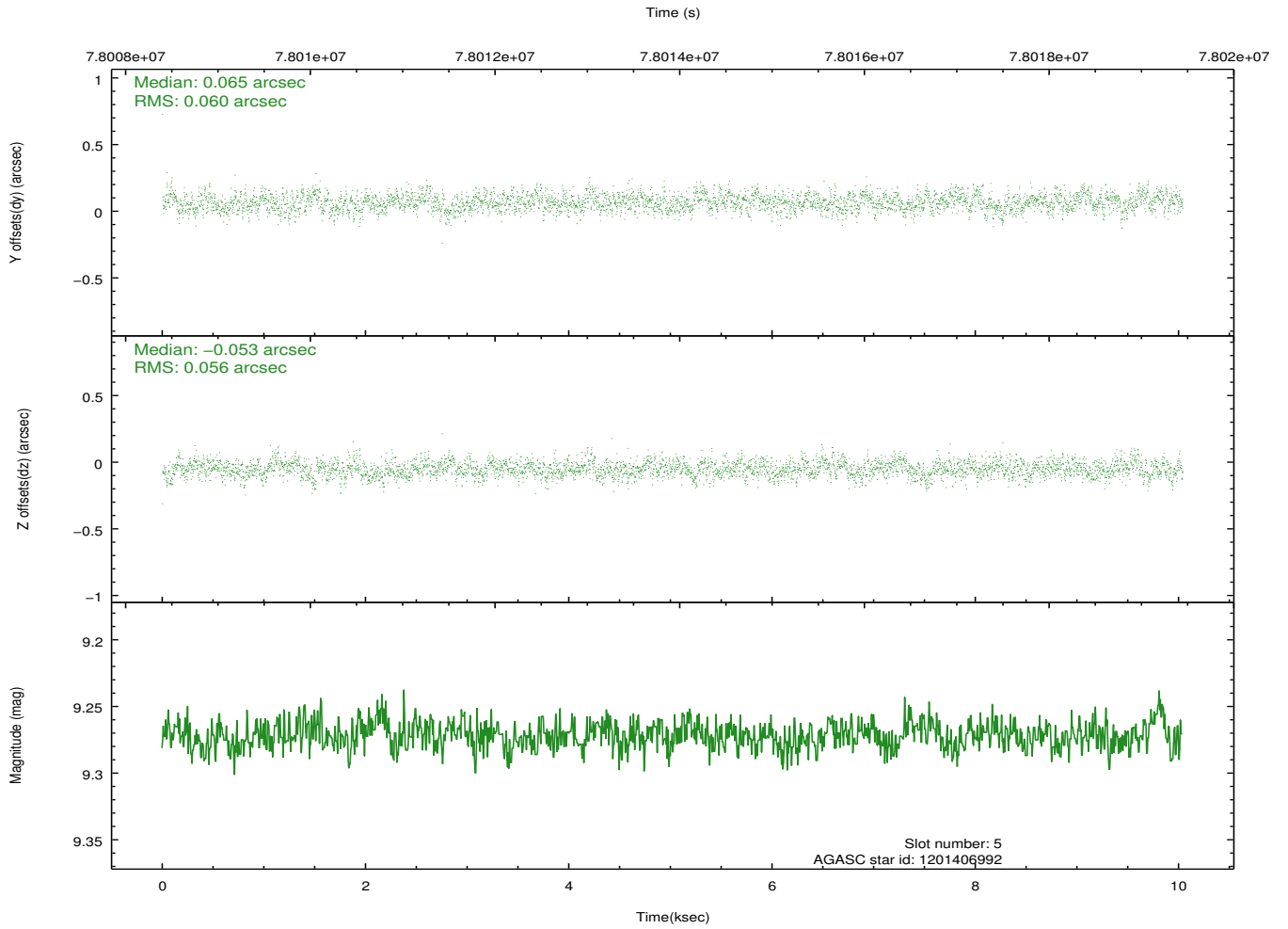
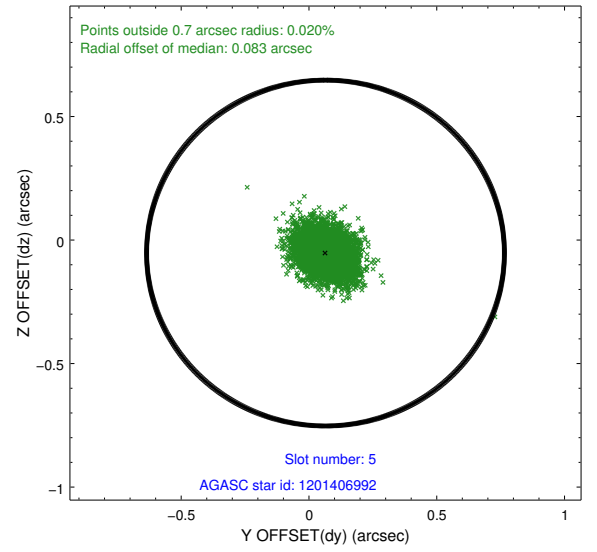
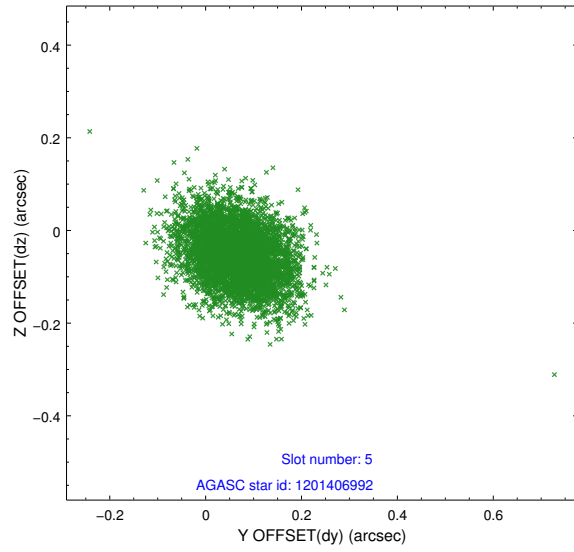
2.4.1 Slot 3



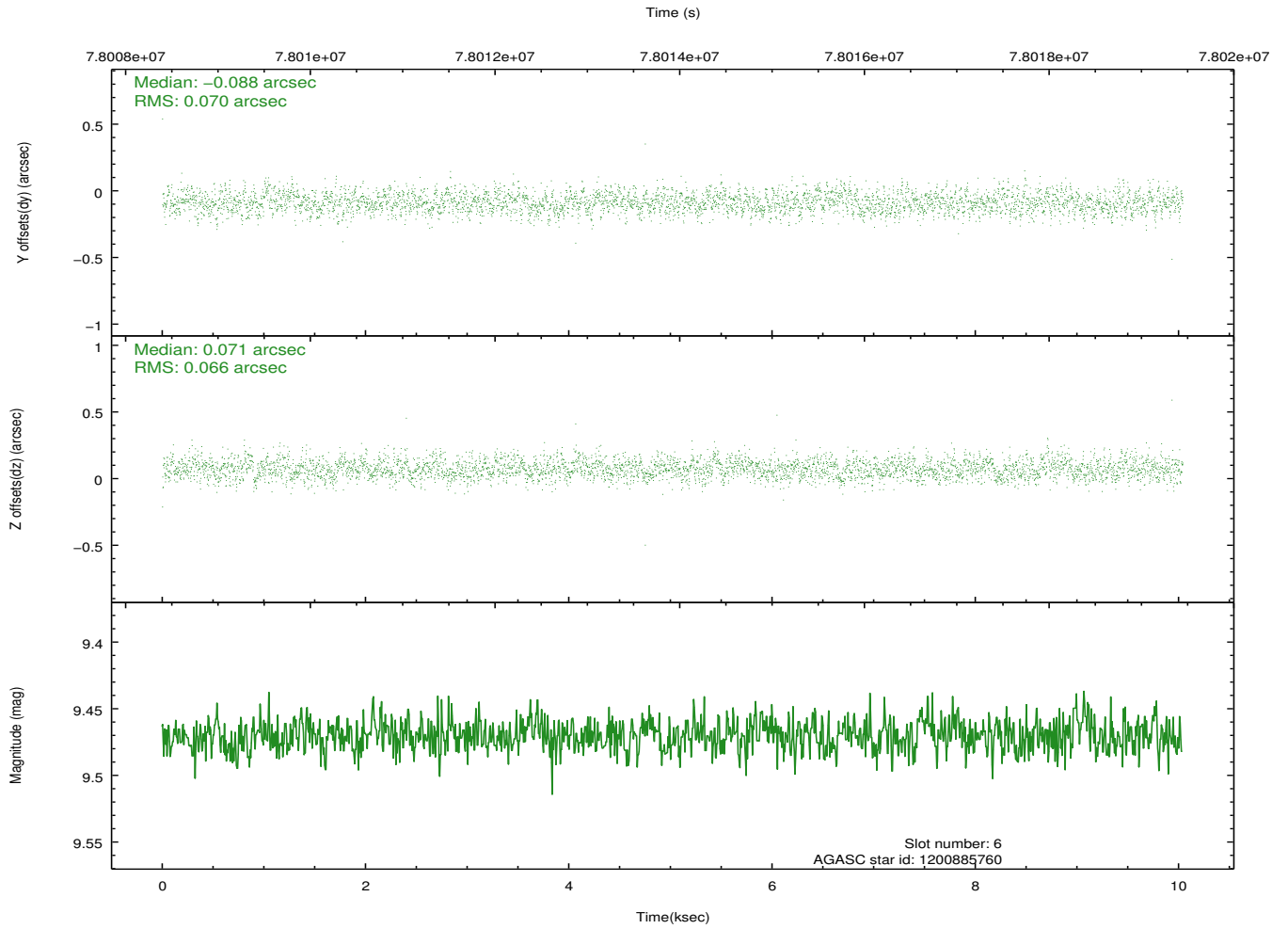
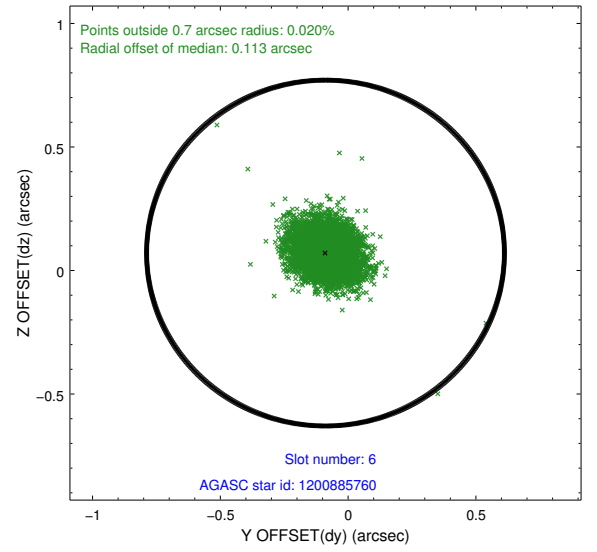
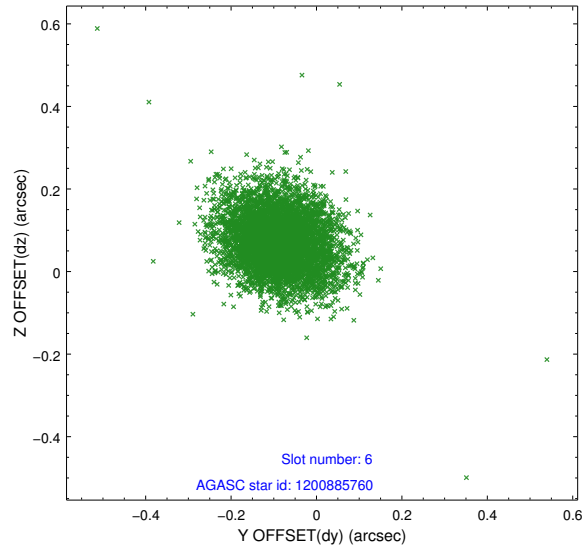
2.4.2 Slot 4



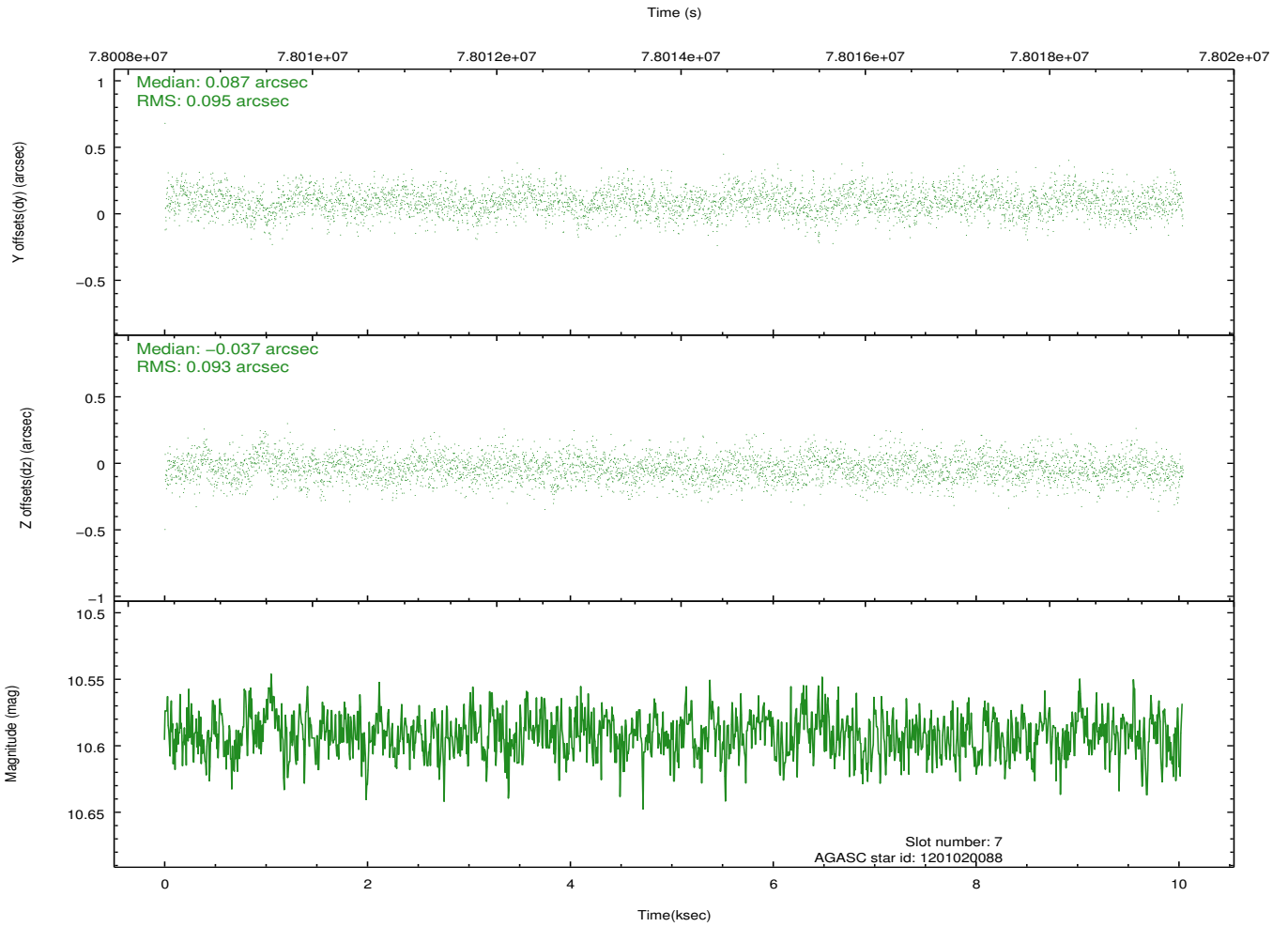
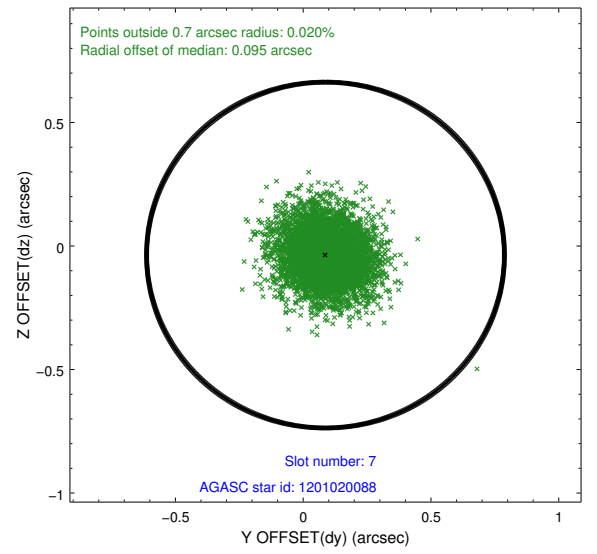
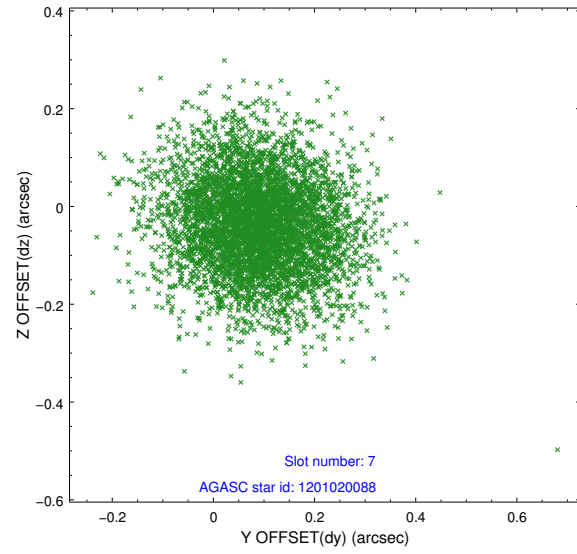
2.4.3 Slot 5



2.4.4 Slot 6

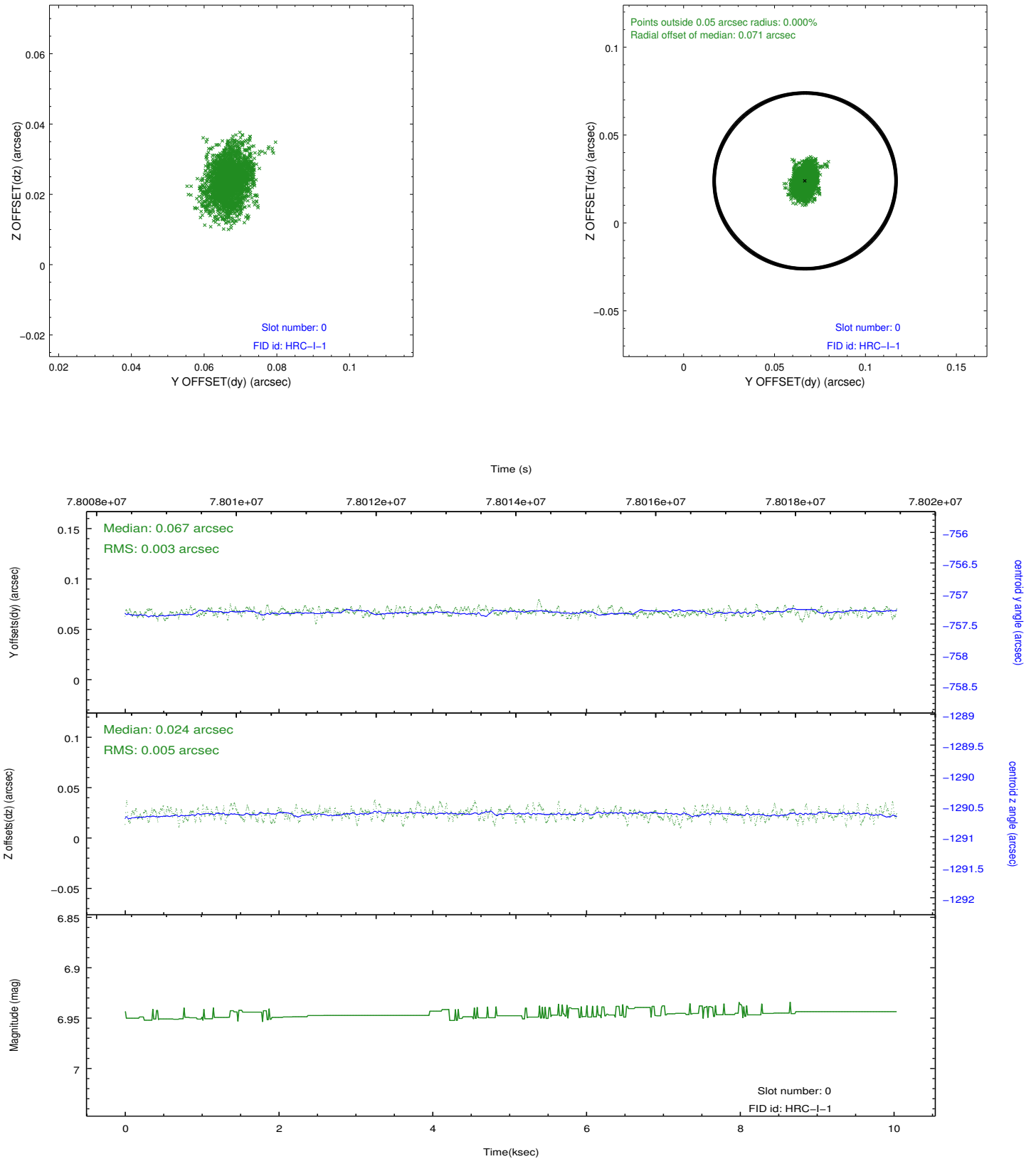


2.4.5 Slot 7

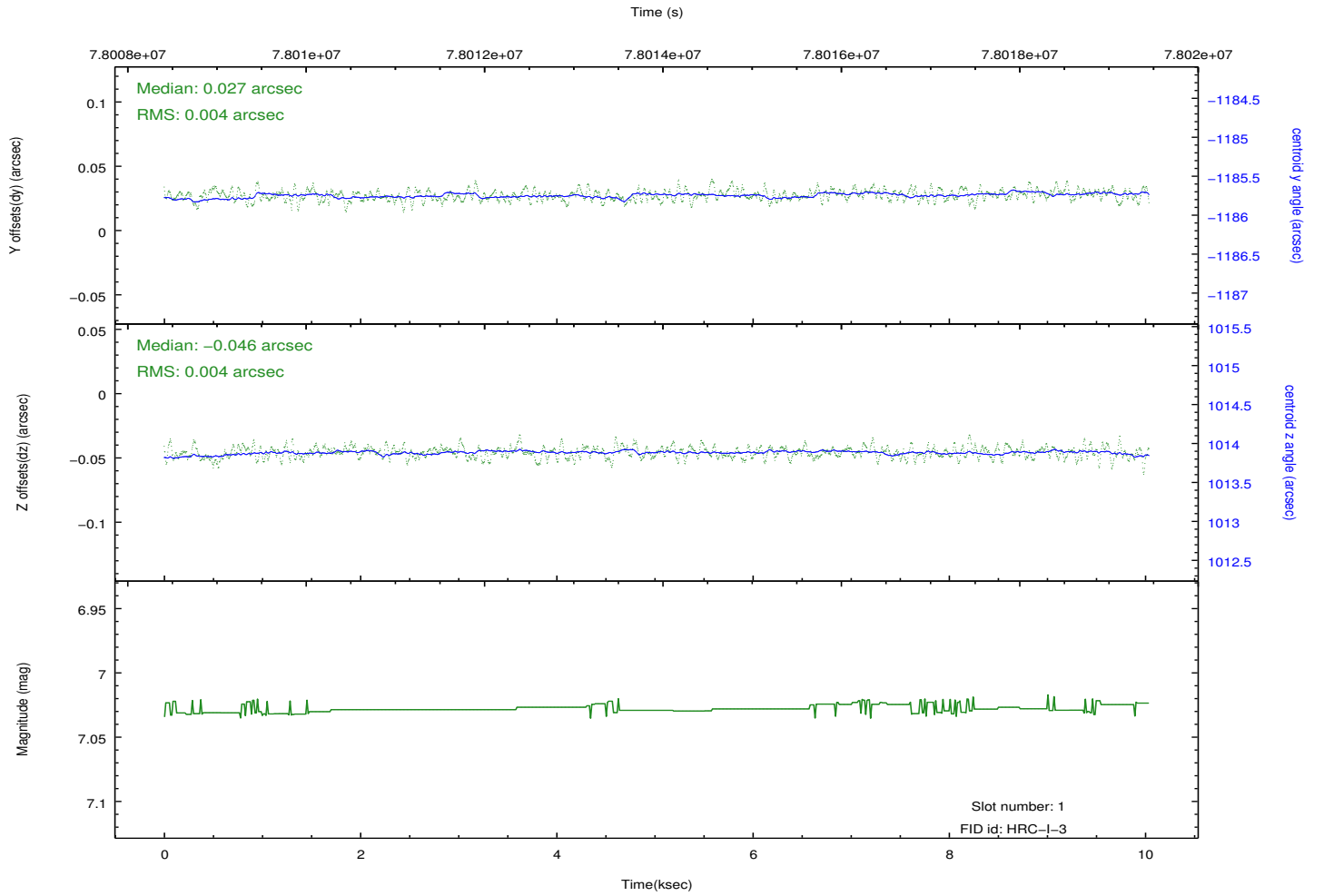
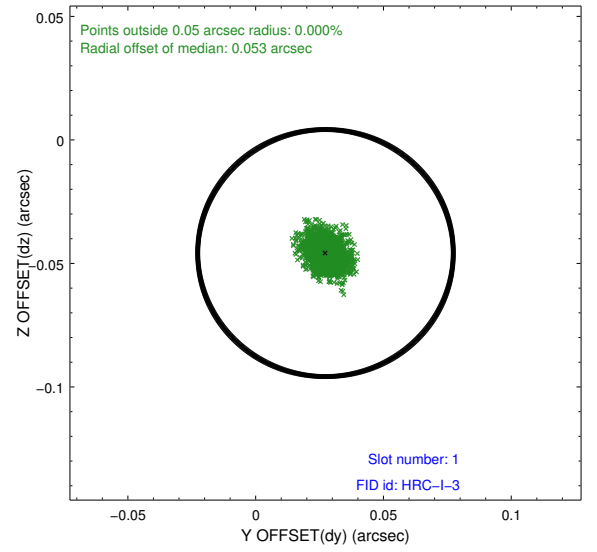
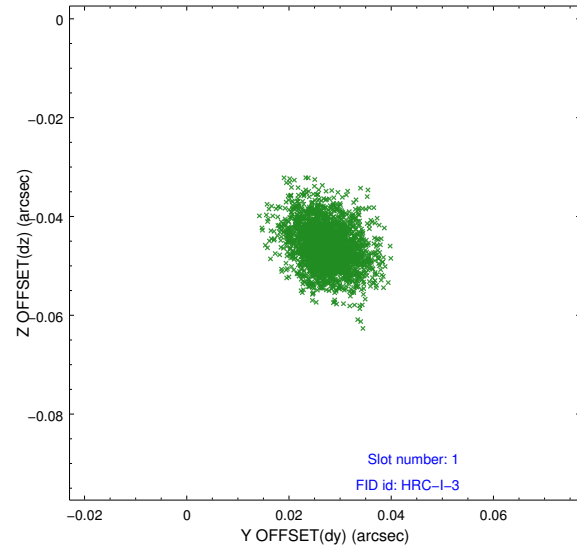


2.5 FID Slots

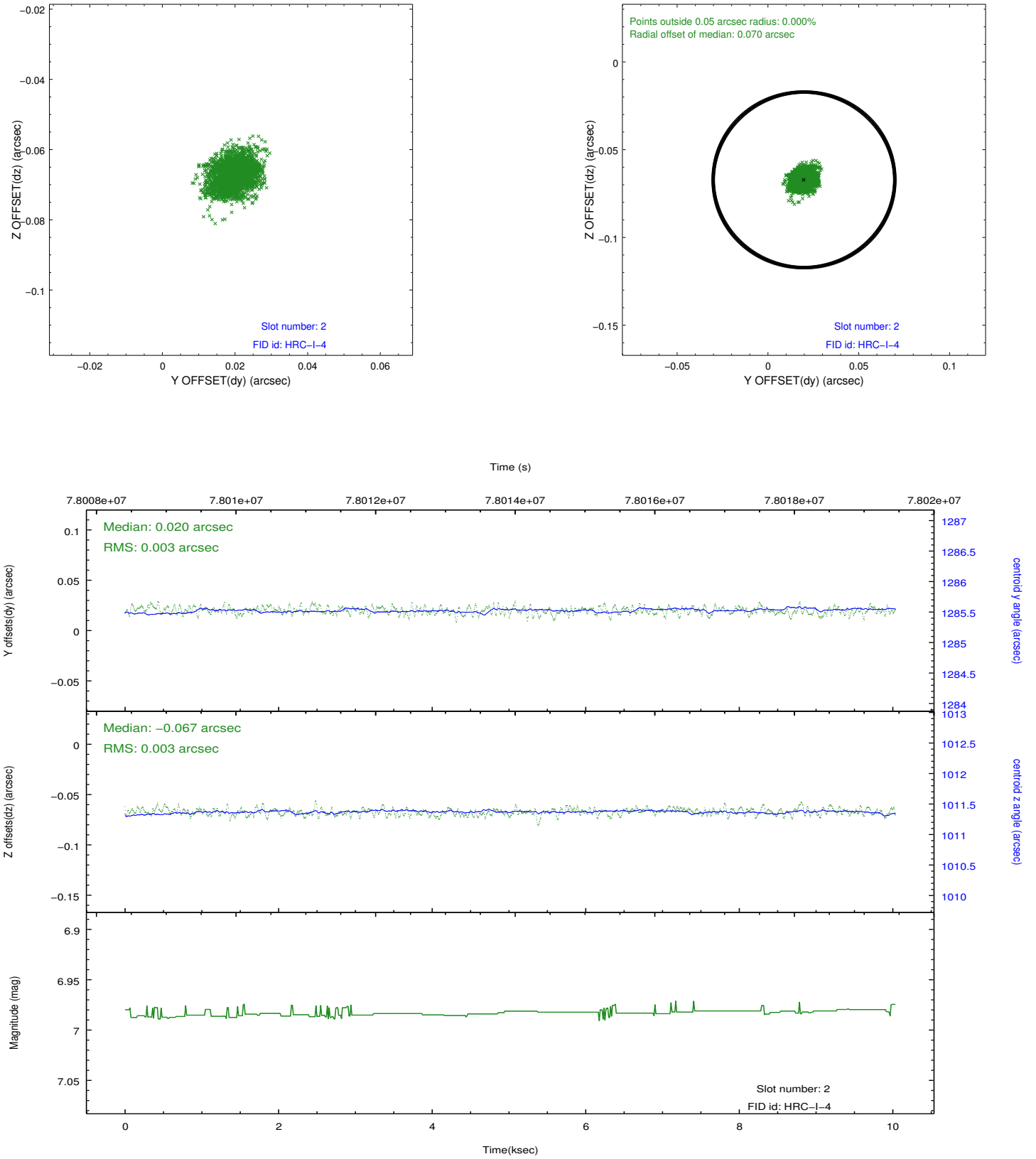
2.5.1 Slot 0



2.5.2 Slot 1



2.5.3 Slot 2



A Summary

A.1 Status

V&V Scientist	Jen Lauer
V&V Date (YYYY-MM-DD)	2012.08.31
V&V Edition	1
V&V Disposition and Status	OK
V&V Charge Time	10.036

A.2 Comments