

V&V Reference Report

L2 ASCDS Version : 8.4.5

Observation 1717 - L2 Version 4
Chandra X-Ray Center

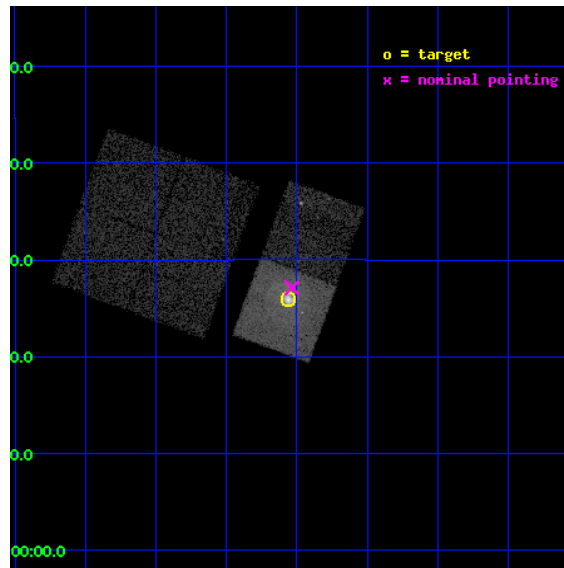
L2 Processing Date : Aug 28 2012

Contents

1	Front	2
2	OBI	3
2.1	OBI	3
2.1.1	Images	3
2.1.2	Bias	3
2.1.3	Parameters	4
2.1.4	Events	4
2.2	Compared Parameters	5
2.3	Aspect	6
2.4	Star Slots	9
2.4.1	Slot 3	9
2.4.2	Slot 4	10
2.4.3	Slot 5	11
2.4.4	Slot 6	12
2.4.5	Slot 7	13
2.5	FID Slots	14
2.5.1	Slot 0	14
2.5.2	Slot 1	15
2.5.3	Slot 2	16
A	Summary	17
A.1	Status	17
A.2	Comments	17

1 Front

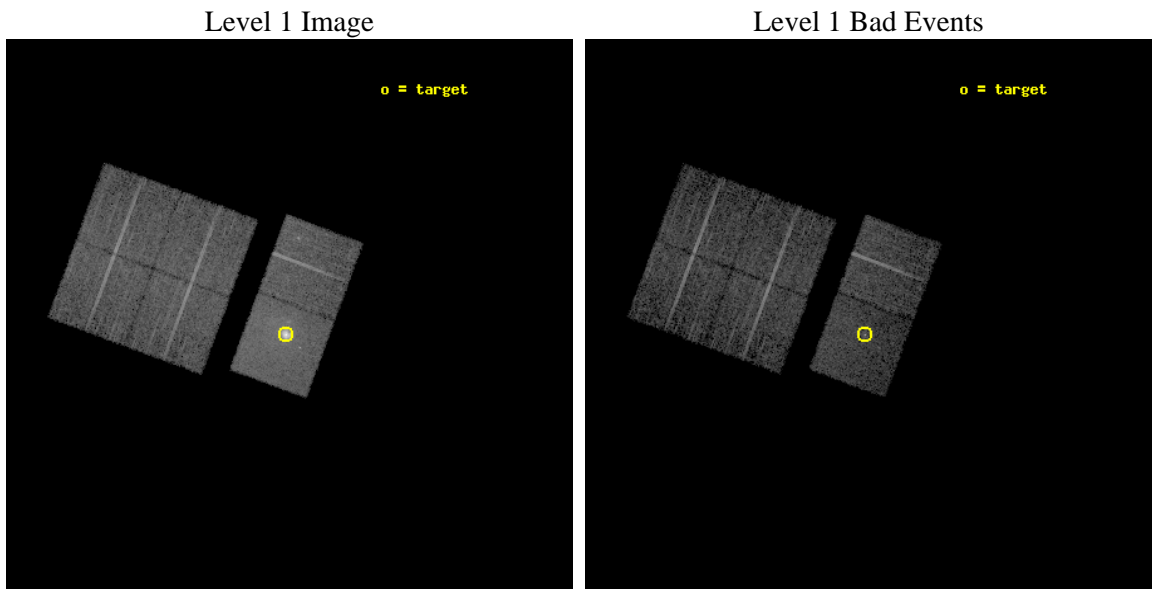
seq_num	590170	Sequence number
obs_id	1717	Observation id
title	HRC RESPONSE TO CONTINUUM SOURCE.	Proposal title
observer	Dr. CXC Calibration	Principal investigator
object	G21.5-0.9 [Chip S3, T=120, Offsets=-1,0,0]	Source name
dtcycle	0	
cycle	P	events from which exps? Prim/Second/Both
ra_targ	278.389583	Observer's specified target RA [deg]
dec_targ	-10.568528	Observer's specified target Dec [deg]
ra_nom	278.38392630263	Nominal RA [deg]
dec_nom	-10.548199399046	Nominal Dec [deg]
roll_nom	110.31160480565	Nominal Roll [deg]
revision	4	Processing version of data
ontime	7632.000007093	Sum of GTIs [s]
livetime	7535.3590275645	Livetime [s]
ontime0	7632.000007093	Sum of GTIs [s]
ontime1	7632.000007093	Sum of GTIs [s]
ontime2	7632.000007093	Sum of GTIs [s]
ontime3	7632.000007093	Sum of GTIs [s]
ontime6	7632.000007093	Sum of GTIs [s]
ontime7	7632.000007093	Sum of GTIs [s]
l2events	80727	Number of level 2 events



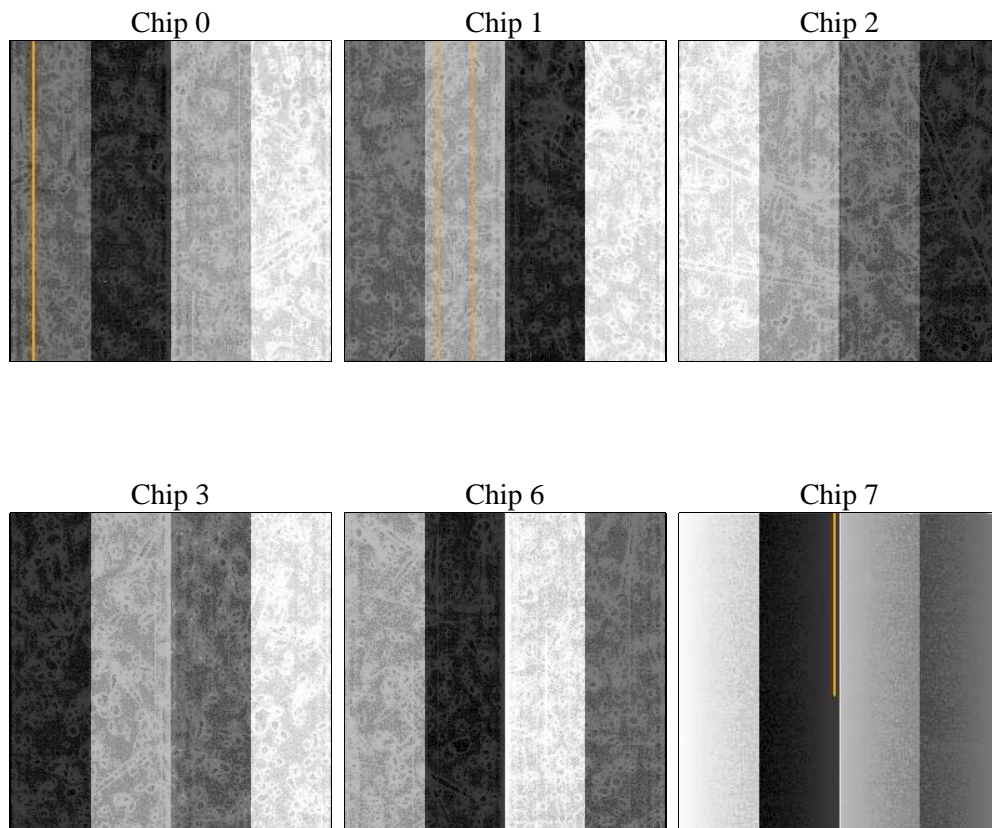
2 OBI

2.1 OBI

2.1.1 Images



2.1.2 Bias



2.1.3 Parameters

obi_num	0	Obi number	sched_exp_time	8000.000000	[s] Scheduled observation exposure time
ascdsver	8.4.5	Processing system revision	ontime	7632.000007093	Sum of GTIs [s]
caldsver	4.5.1.1	 	ontime0	7632.000007093	Sum of GTIs [s]
date	2012-08-28T04:37:39	Date and time of file creation	ontime1	7632.000007093	Sum of GTIs [s]
revision	4	Processing version of data	ontime2	7632.000007093	Sum of GTIs [s]
			ontime3	7632.000007093	Sum of GTIs [s]
			ontime6	7632.000007093	Sum of GTIs [s]
			ontime7	7632.000007093	Sum of GTIs [s]
			l1events	327622	Number of level 1 events

2.1.4 Events

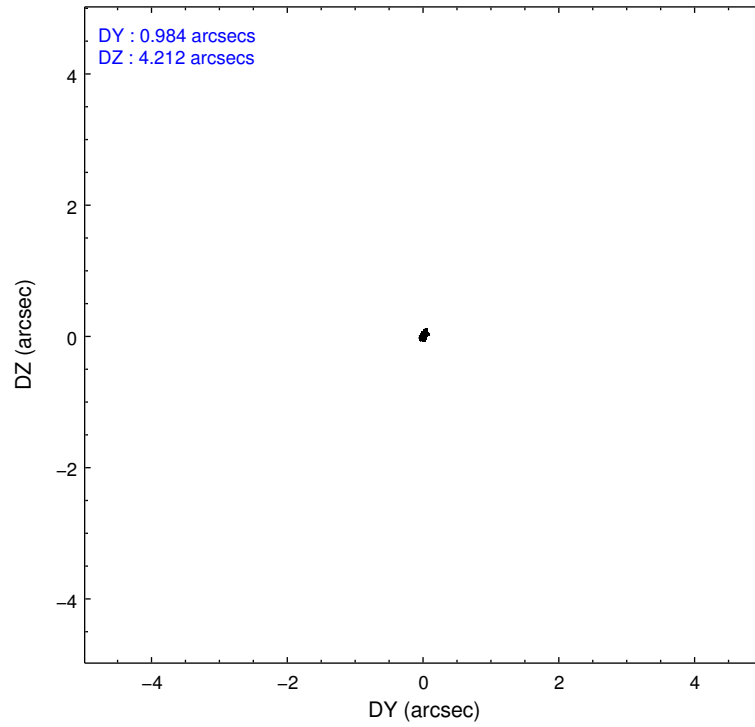
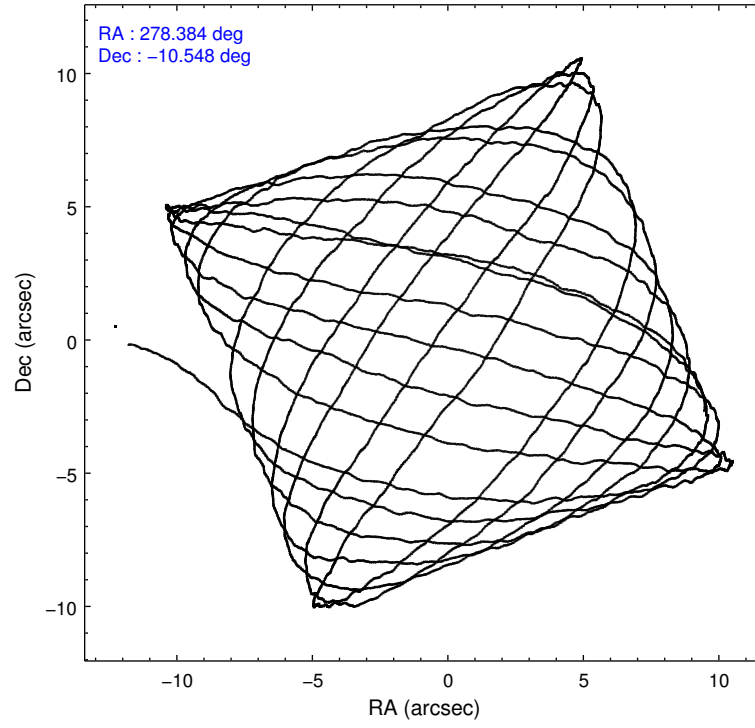
	ccd 0	ccd 1	ccd 2	ccd 3	ccd 6	ccd 7		ccd 0	ccd 1	ccd 2	ccd 3	ccd 6	ccd 7
level 1 events	46230	46156	48475	47440	51782	87539	grade 0 events	2613	2656	2621	2738	3501	8888
rejected events	40148	39754	42439	41248	44470	33653		5%	5%	5%	5%	6%	10%
rejected %	86%	86%	87%	86%	85%	38%	grade 1 events	36	20	22	29	26	98
								0%	0%	0%	0%	0%	0%
							grade 2 events	1373	1379	1320	1347	1498	12165
								2%	2%	2%	2%	2%	13%
							grade 3 events	533	598	504	551	583	5634
								1%	1%	1%	1%	1%	6%
							grade 4 events	499	626	545	534	568	5681
								1%	1%	1%	1%	1%	6%
							grade 5 events	1610	1619	1490	1588	1810	5882
								3%	3%	3%	3%	3%	6%
							grade 6 events	1069	1148	1050	1028	1169	21553
								2%	2%	2%	2%	2%	24%
							grade 7 events	38497	38110	40923	39625	42627	27638
								83%	82%	84%	83%	82%	31%

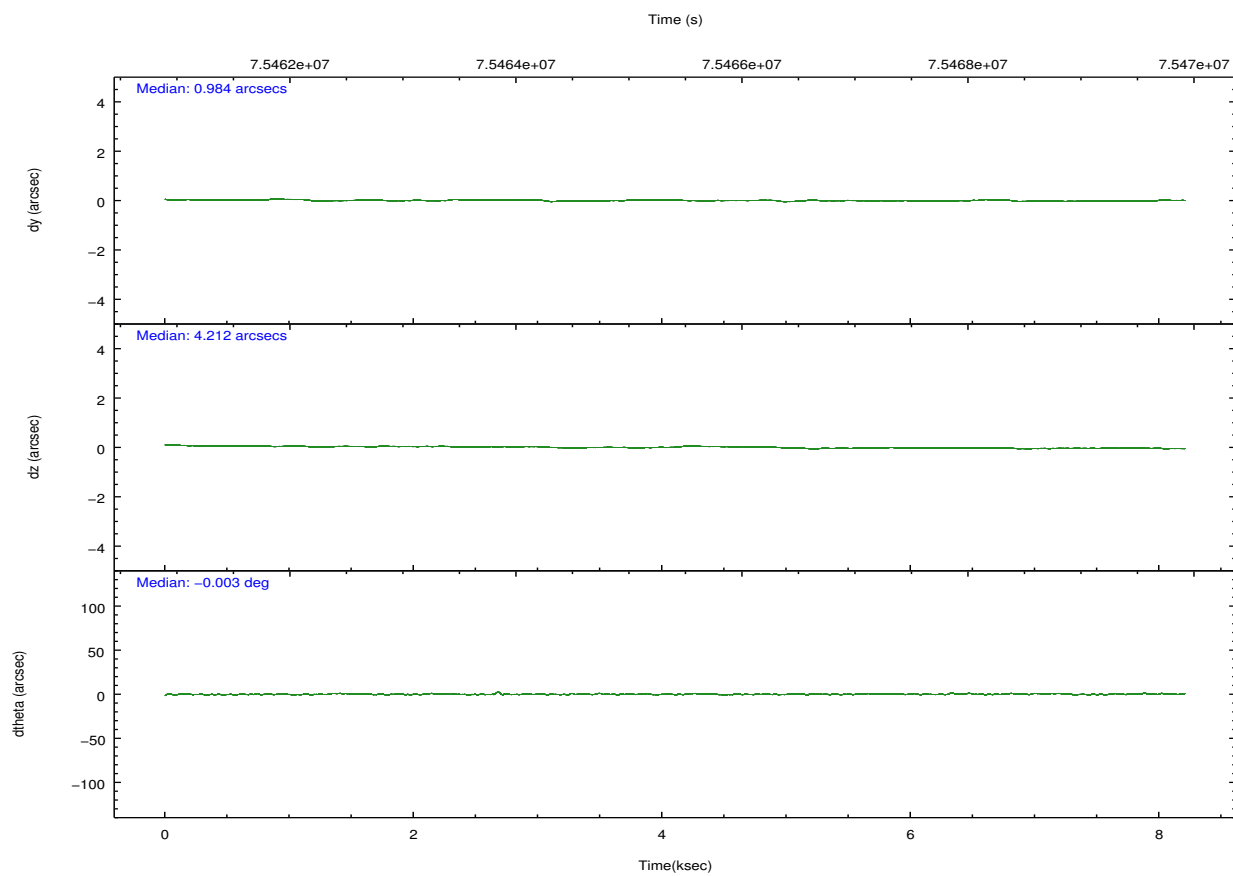
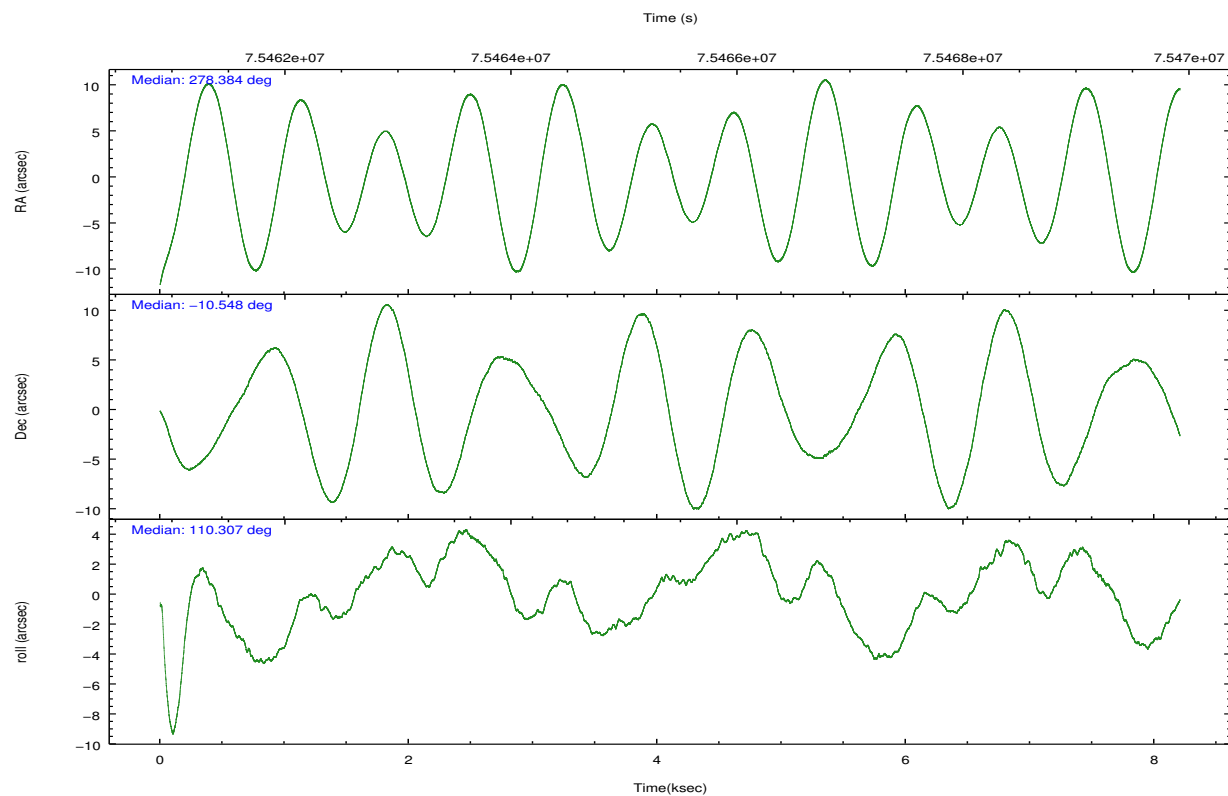
2.2 Compared Parameters

Parameter	Planned	Actual
Instrument	ACIS	ACIS
Detector	ACIS-012367	ACIS-012367
Grating	NONE	NONE
Data mode	FAINT	FAINT
Observation mode	POINTING	POINTING
[deg] Pointing RA	278.405475	278.3839263026262
[deg] Pointing Dec	-10.565627	-10.54819939904622
[deg] Pointing Roll	110.158909	110.3116048056494
[mm] SIM focus pos	-0.684267	-0.6828225247311905
[mm] SIM defocus	0	0.001444936568705701
[mm] SIM translation stage pos	-190.132523	-190.1400660498719
[mm] SIM translation stage offset	0	0.00754346686406393
[s] Observation start time (MET)	75461515.184000	75461119.604404
Observation start date	2000-05-23T09:30:51	2000-05-23T09:25:19
[s] Observation end time (MET)	75469515.184000	75469649.654717
Observation end date	2000-05-23T11:44:11	2000-05-23T11:47:29
Read mode	TIMED	TIMED

Parameter	Planned	Actual
Obspar format version number	7	7
Obspar file type	PREDICTED	ACTUAL
Obspar update status	NONE	UPDATED
Number of optional ACIS chips dropped	0	0
On-chip summing requested	N	N
Subarray requested	NONE	NONE
Alternating exposures requested	N	N
[s] Primary exposure time	0.000000	3.2

2.3 Aspect



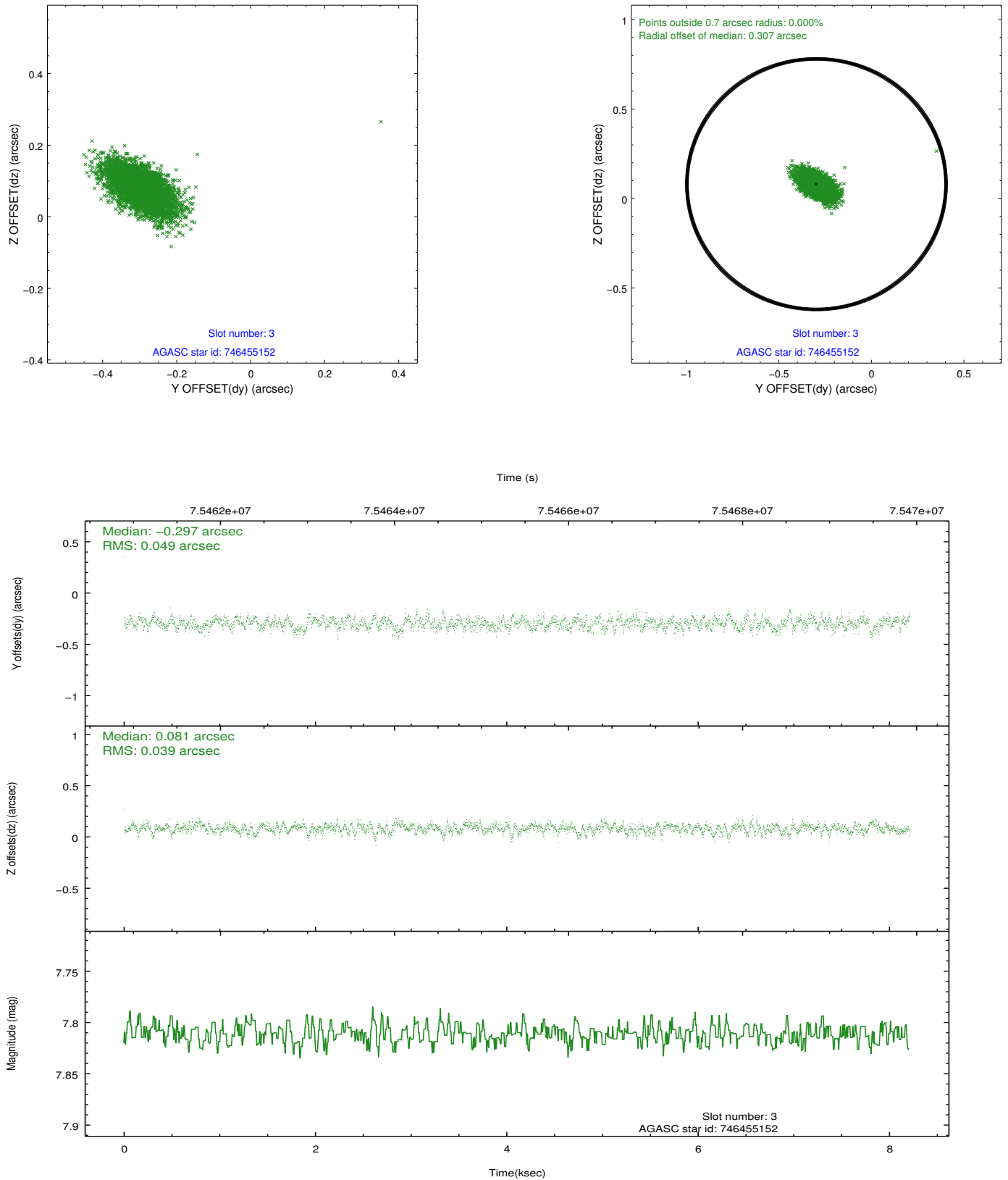


Slot Statistics

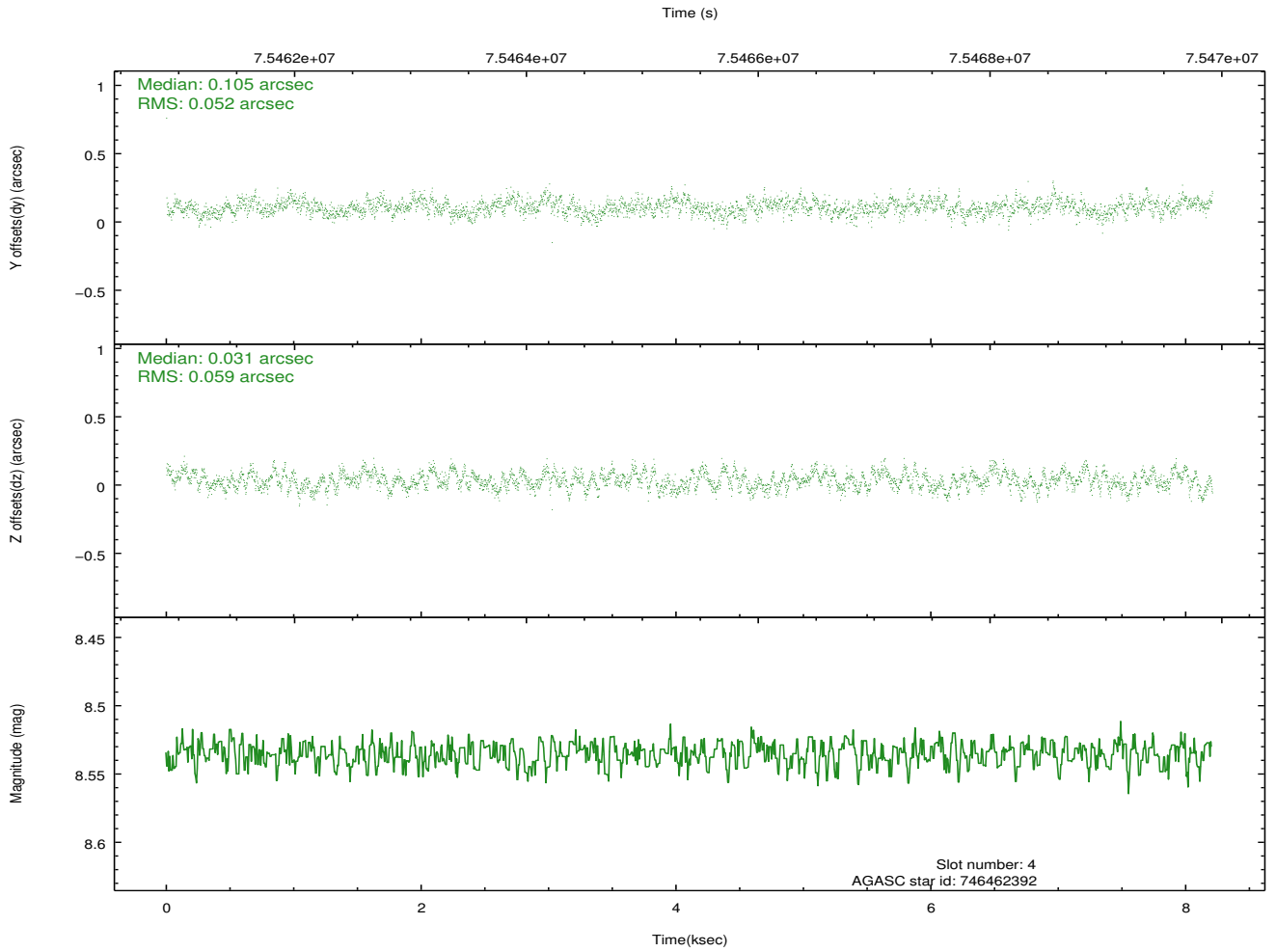
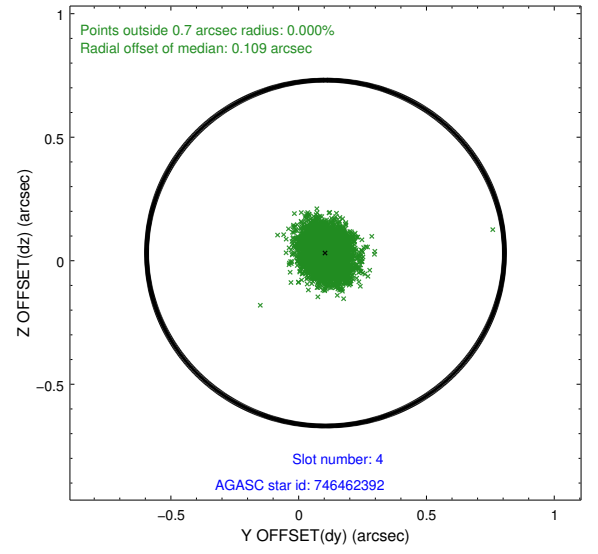
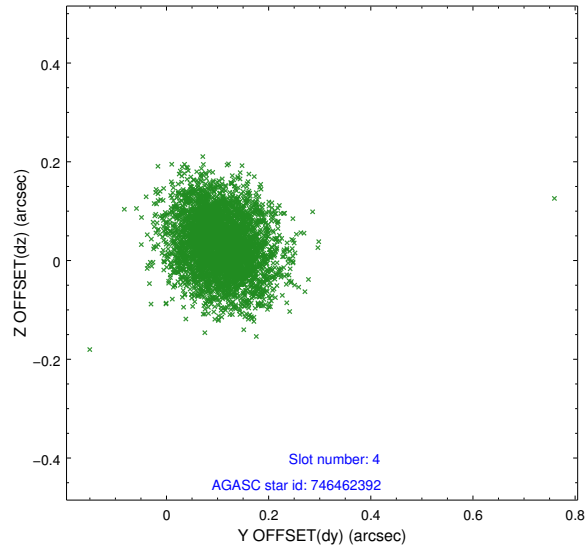
slot	status	id	mag	n_pts	med_dy	med_dz	dr1	dr2	ra	dec	mean_y	mean_z
0	FID	ACIS-S-2	7.11	2002	-0.019	-0.010	0.007	0.012	0.000000	0.000000	-753.61	-1725.31
1	FID	ACIS-S-4	7.21	2002	-0.002	0.012	0.006	0.011	0.000000	0.000000	2159.40	182.46
2	FID	ACIS-S-5	7.24	2002	-0.010	0.007	0.007	0.011	0.000000	0.000000	-1805.55	176.95
3	GUIDE	746455152	7.81	4005	-0.297	0.081	0.064	0.114	278.447893	-9.976732	1938.75	-872.05
4	GUIDE	746462392	8.54	4004	0.105	0.031	0.083	0.133	279.038421	-10.890715	-1870.65	-1697.25
5	GUIDE	746455112	8.95	4001	0.079	0.057	0.139	0.202	278.266531	-10.703234	-295.53	631.28
6	GUIDE	746460328	9.82	4003	-0.123	0.085	0.121	0.192	278.603974	-9.898096	2013.66	-1489.04
7	GUIDE	746995400	9.52	4000	0.229	-0.256	0.119	0.191	278.078957	-11.289885	-2049.74	1979.71

2.4 Star Slots

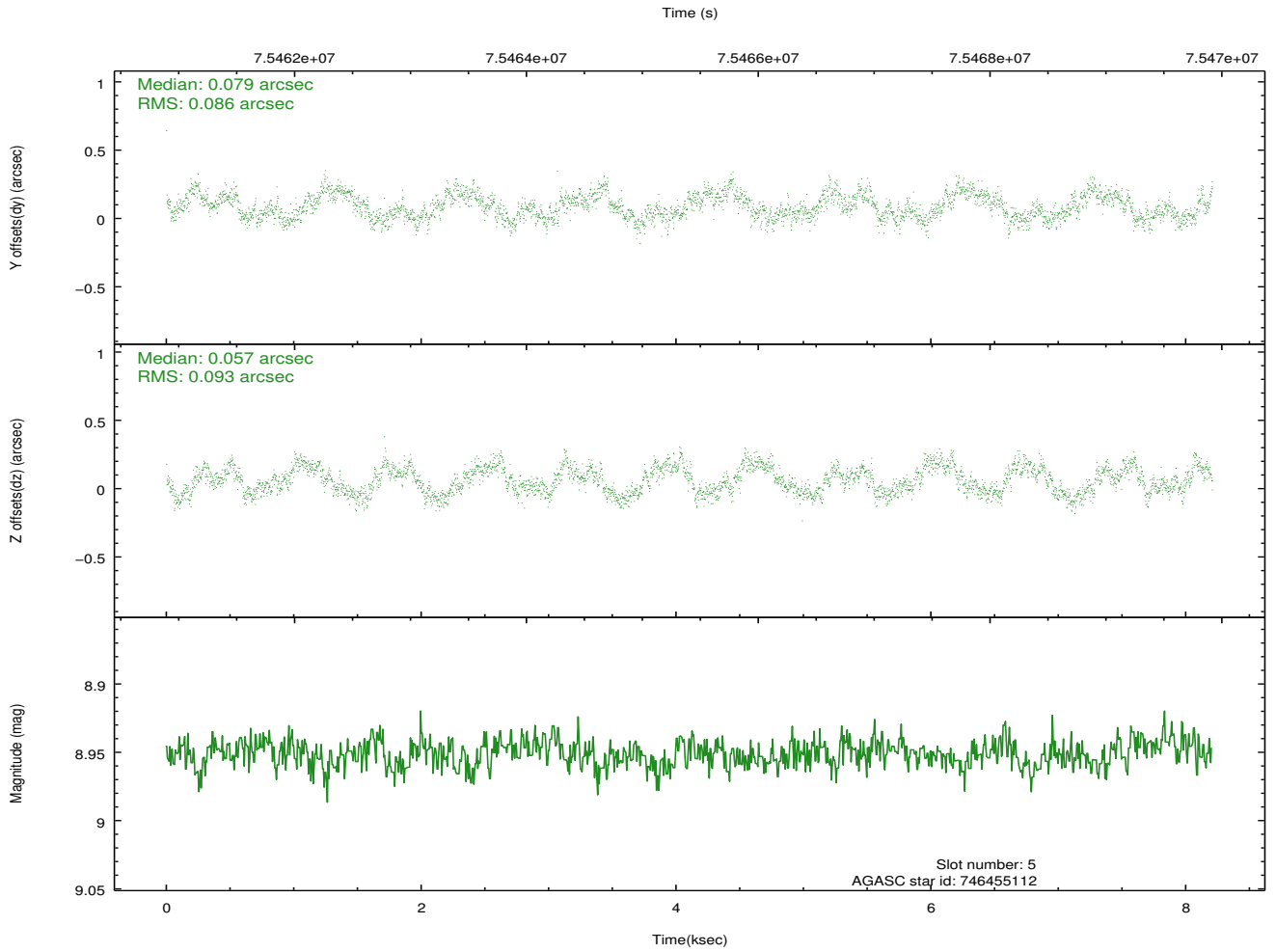
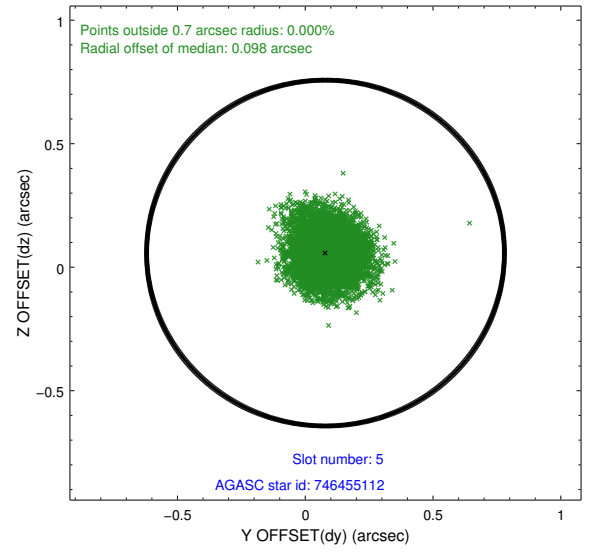
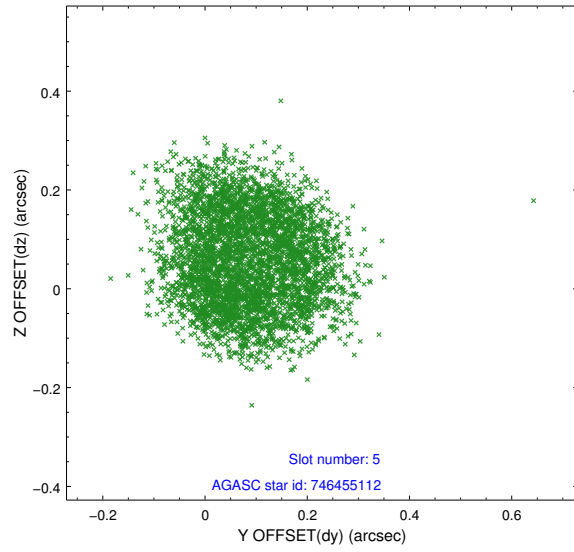
2.4.1 Slot 3



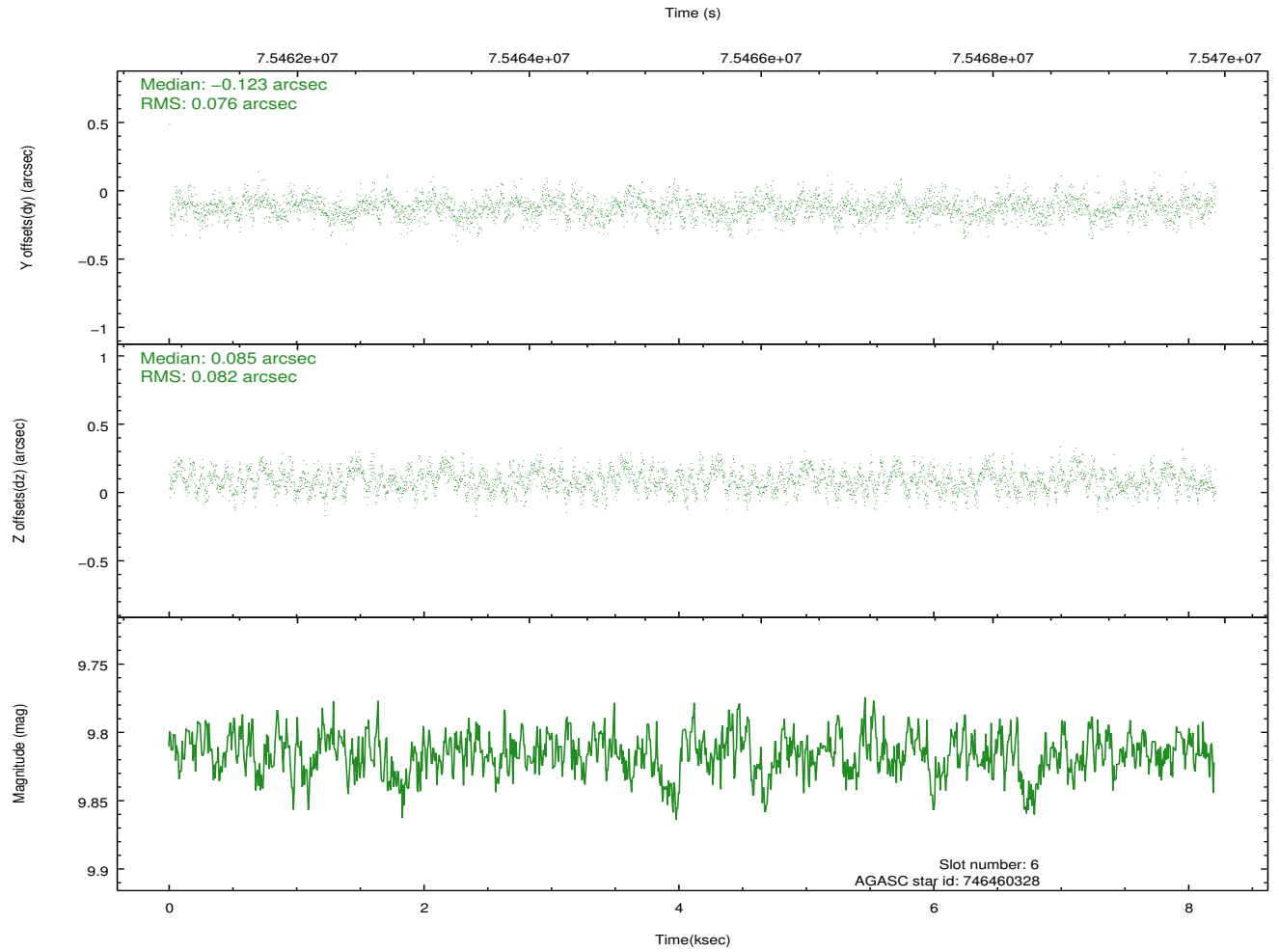
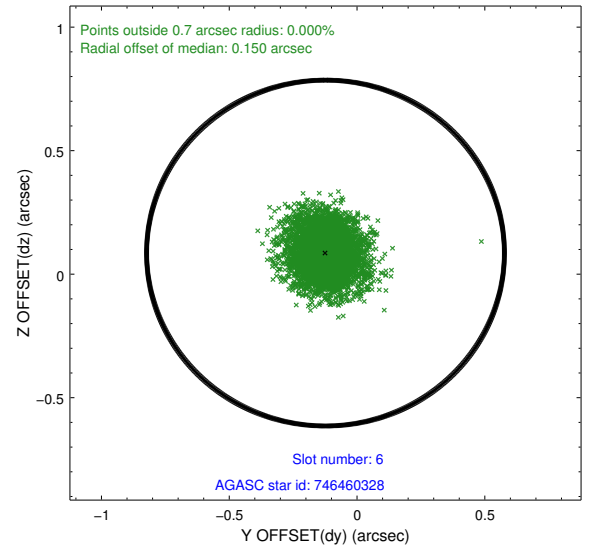
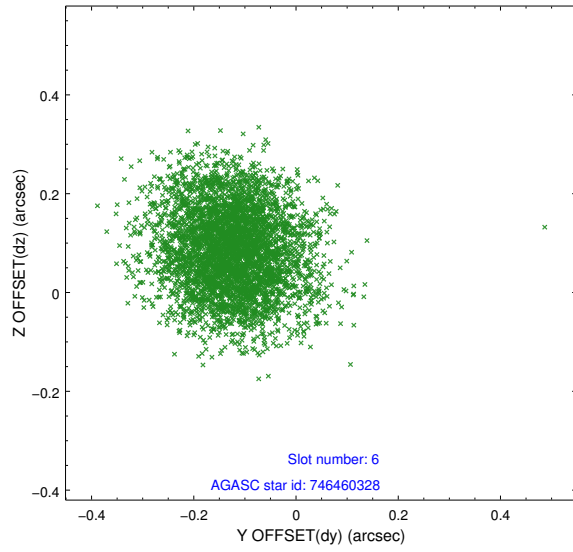
2.4.2 Slot 4



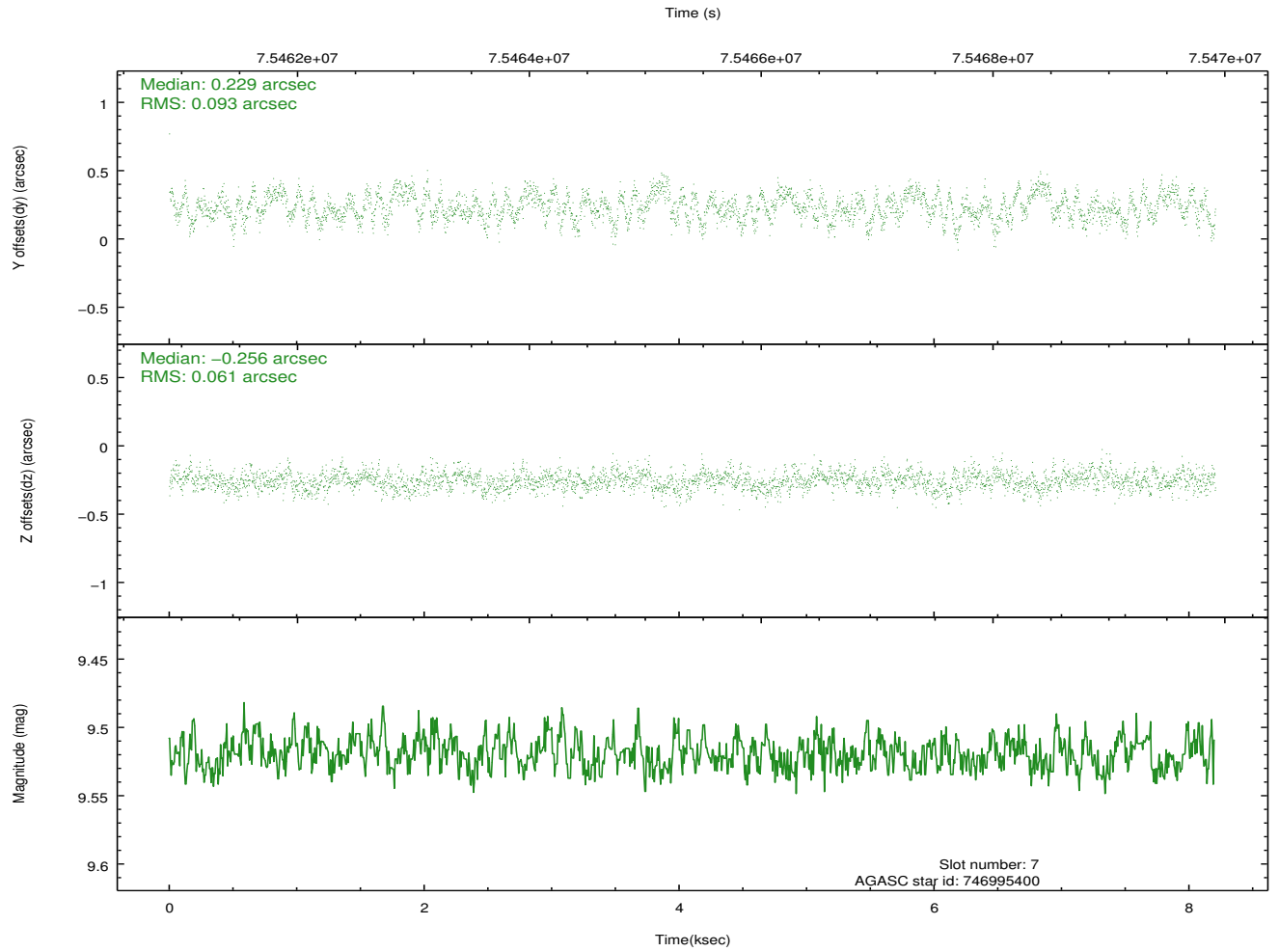
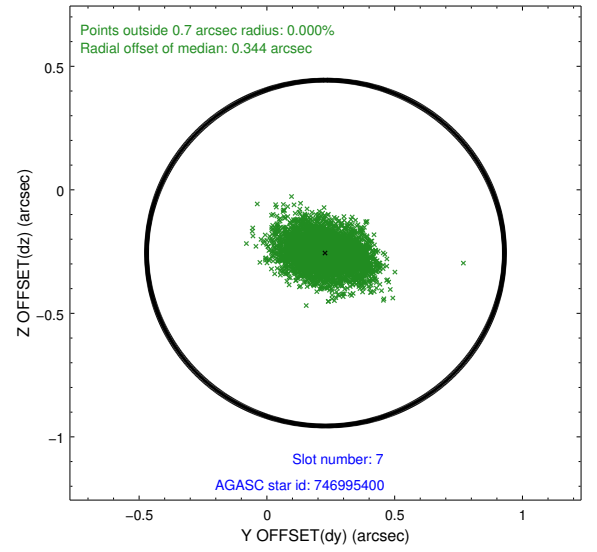
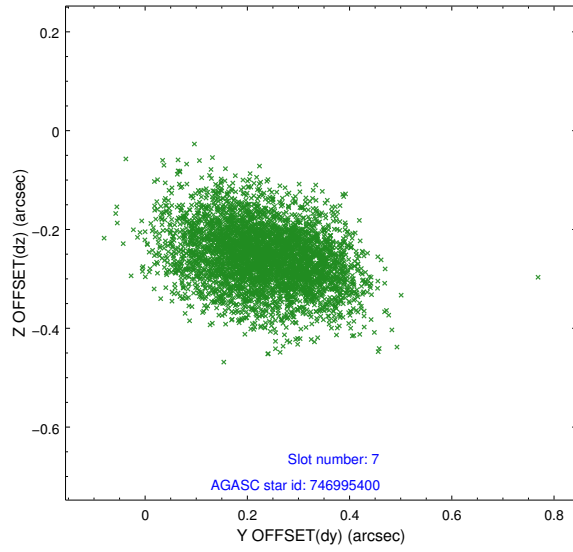
2.4.3 Slot 5



2.4.4 Slot 6

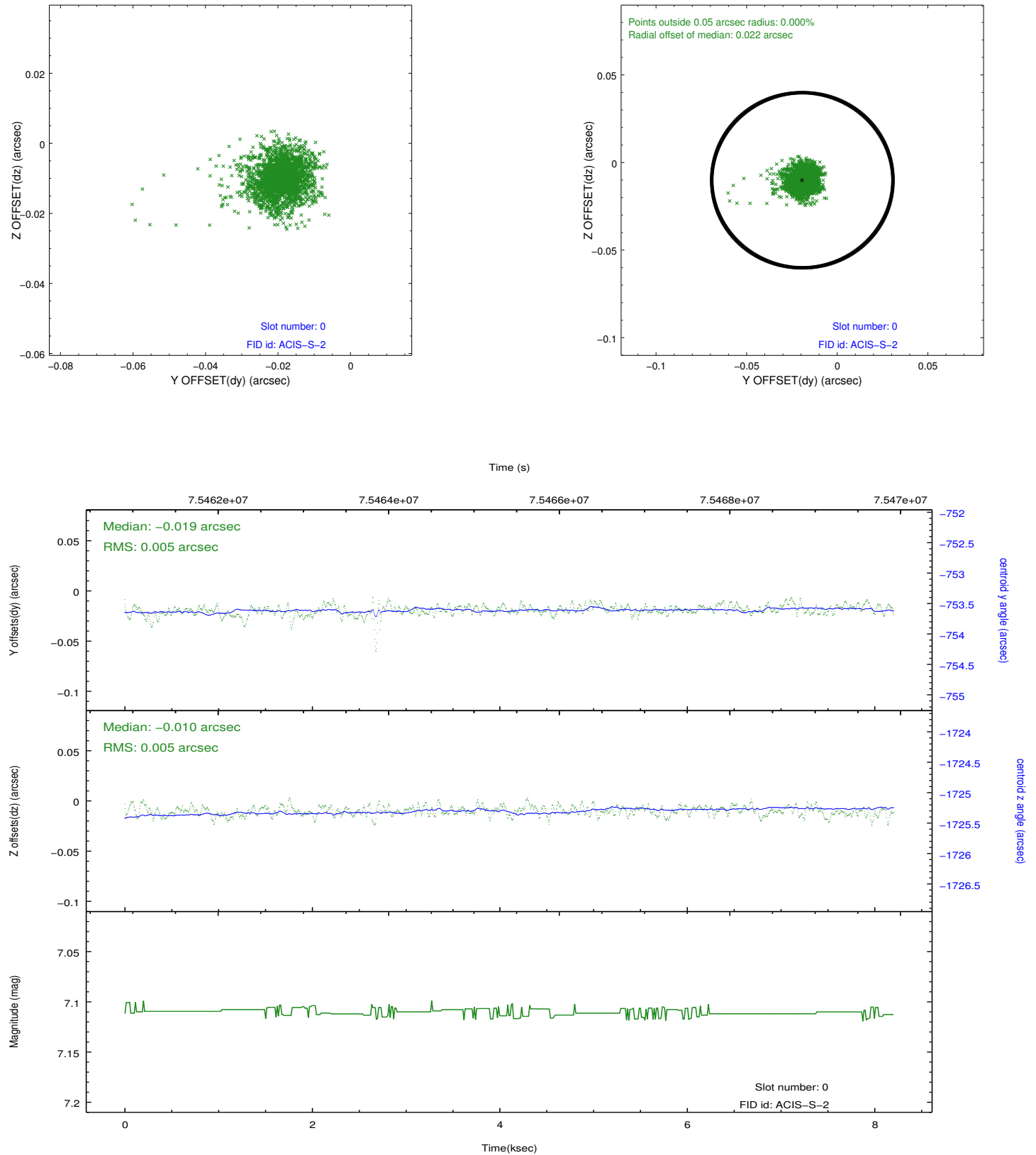


2.4.5 Slot 7

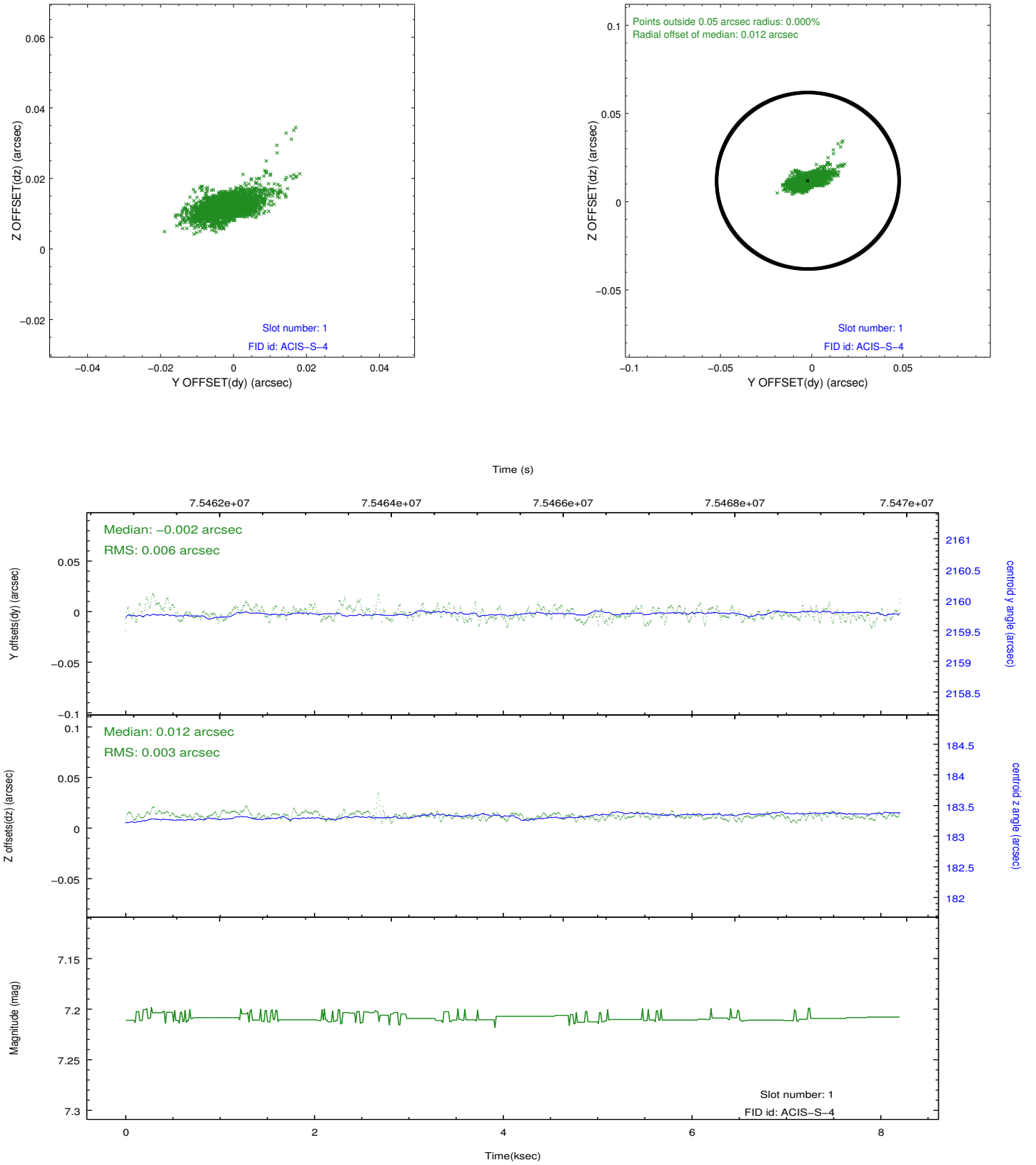


2.5 FID Slots

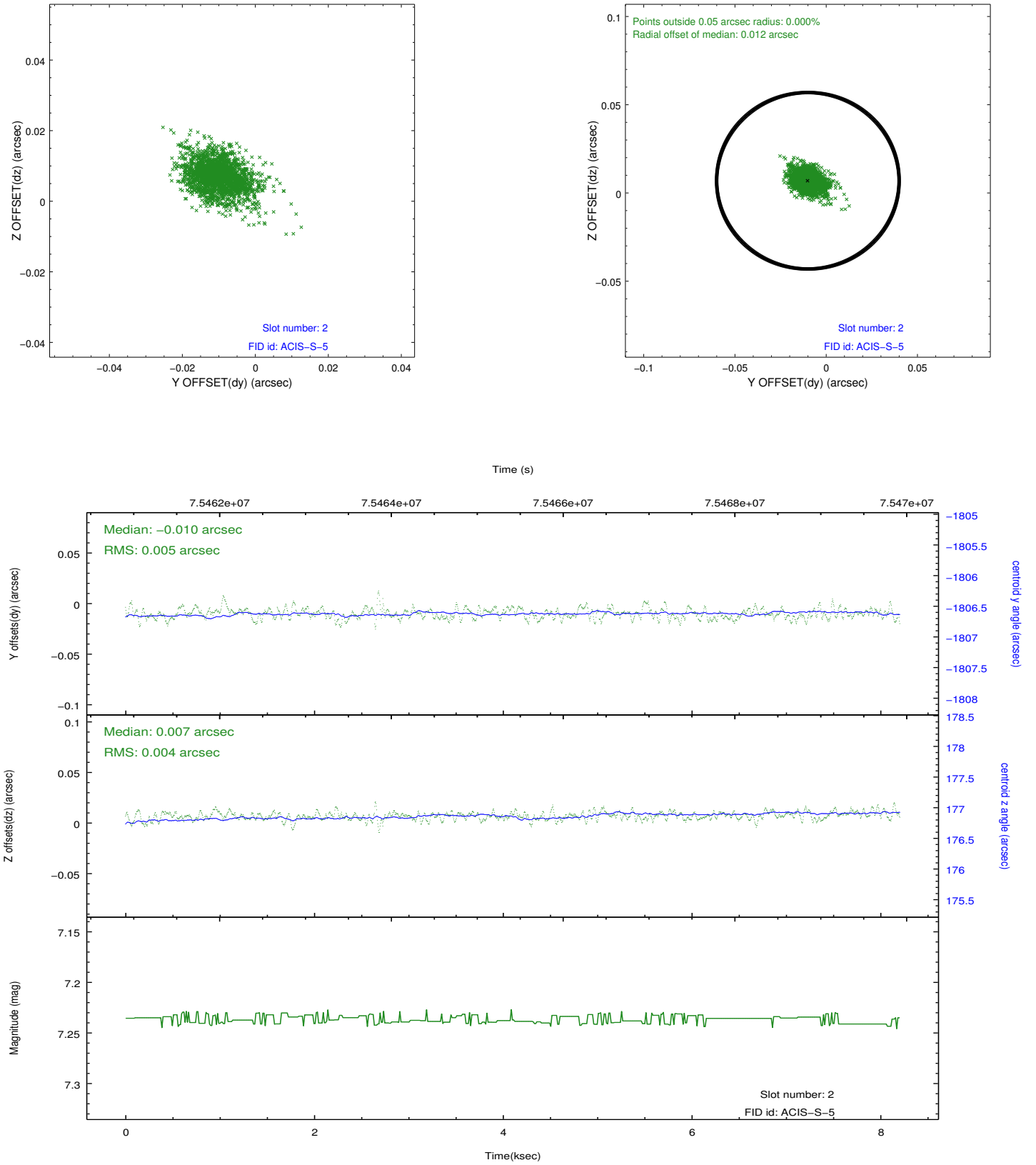
2.5.1 Slot 0



2.5.2 Slot 1



2.5.3 Slot 2



A Summary

A.1 Status

V&V Scientist	Beth Sundheim
V&V Date (YYYY-MM-DD)	2012.08.30
V&V Edition	1
V&V Disposition and Status	OK
V&V Charge Time	7.635

A.2 Comments