

V&V Reference Report

L2 ASCDS Version : 8.4.5

Observation 1716 - L2 Version 4
Chandra X-Ray Center

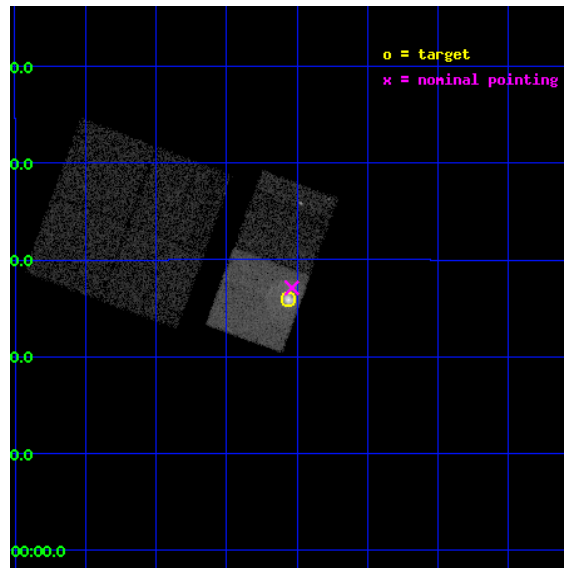
L2 Processing Date : Aug 28 2012

Contents

1	Front	2
2	OBI	3
2.1	OBI	3
2.1.1	Images	3
2.1.2	Bias	3
2.1.3	Parameters	4
2.1.4	Events	4
2.2	Compared Parameters	5
2.3	Aspect	6
2.4	Star Slots	9
2.4.1	Slot 3	9
2.4.2	Slot 4	10
2.4.3	Slot 5	11
2.4.4	Slot 6	12
2.4.5	Slot 7	13
2.5	FID Slots	14
2.5.1	Slot 0	14
2.5.2	Slot 1	15
2.5.3	Slot 2	16
A	Summary	17
A.1	Status	17
A.2	Comments	17

1 Front

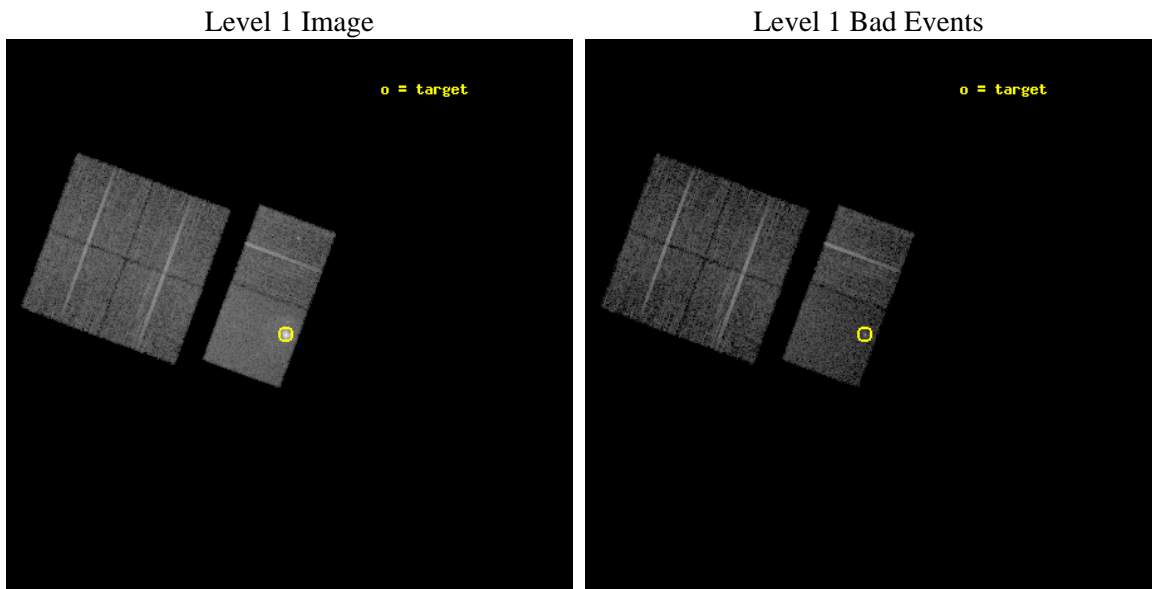
seq_num	590169	Sequence number
obs_id	1716	Observation id
title	HRC RESPONSE TO CONTINUUM SOURCE.	Proposal title
observer	Dr. CXC Calibration	Principal investigator
object	G21.5-0.9 [Chip S3, T=120, Offsets=-1,0,3]	Source name
dtcycle	0	
cycle	P	events from which exps? Prim/Second/Both
ra_targ	278.389583	Observer's specified target RA [deg]
dec_targ	-10.568528	Observer's specified target Dec [deg]
ra_nom	278.38399129141	Nominal RA [deg]
dec_nom	-10.548253516621	Nominal Dec [deg]
roll_nom	110.25308069358	Nominal Roll [deg]
revision	4	Processing version of data
ontime	7830.4000072777	Sum of GTIs [s]
livetime	7731.2467674848	Livetime [s]
ontime0	7830.4000072777	Sum of GTIs [s]
ontime1	7830.4000072777	Sum of GTIs [s]
ontime2	7830.4000072777	Sum of GTIs [s]
ontime3	7830.4000072777	Sum of GTIs [s]
ontime6	7830.4000072777	Sum of GTIs [s]
ontime7	7830.4000072777	Sum of GTIs [s]
l2events	79132	Number of level 2 events



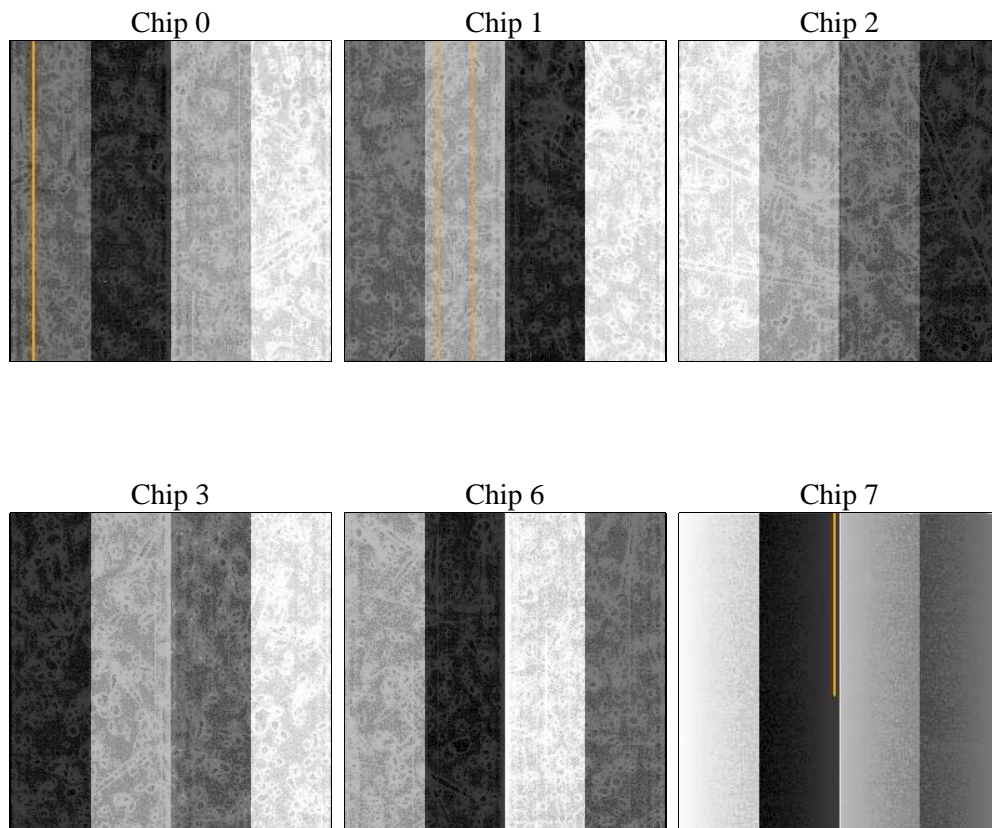
2 OBI

2.1 OBI

2.1.1 Images



2.1.2 Bias



2.1.3 Parameters

obi_num	0	Obi number	sched_exp_time	8000.000000	[s] Scheduled observation exposure time
ascdsver	8.4.5	Processing system revision	ontime	7830.4000072777	Sum of GTIs [s]
caldsver	4.5.1.1	 	ontime0	7830.4000072777	Sum of GTIs [s]
date	2012-08-28T04:33:53	Date and time of file creation	ontime1	7830.4000072777	Sum of GTIs [s]
revision	4	Processing version of data	ontime2	7830.4000072777	Sum of GTIs [s]
			ontime3	7830.4000072777	Sum of GTIs [s]
			ontime6	7830.4000072777	Sum of GTIs [s]
			ontime7	7830.4000072777	Sum of GTIs [s]
			l1events	331224	Number of level 1 events

2.1.4 Events

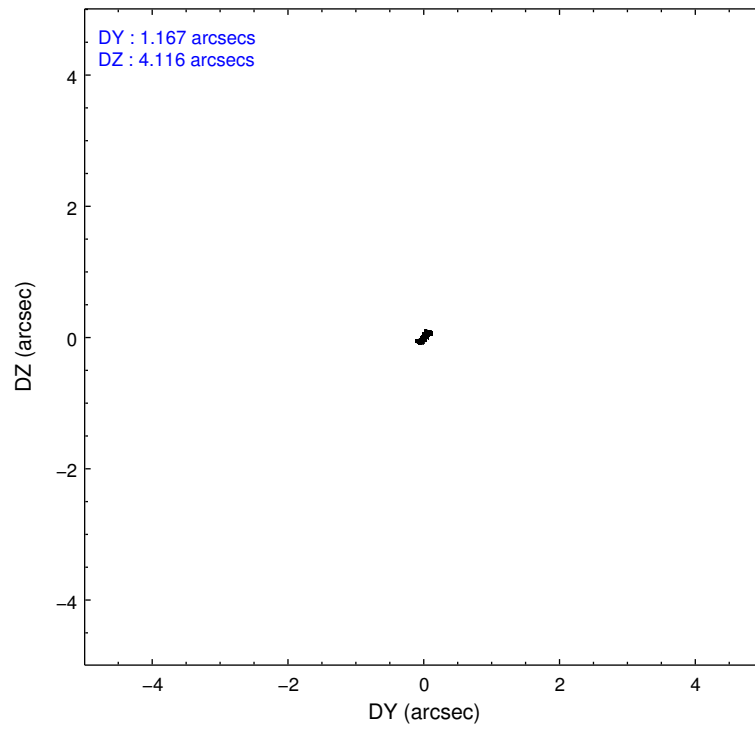
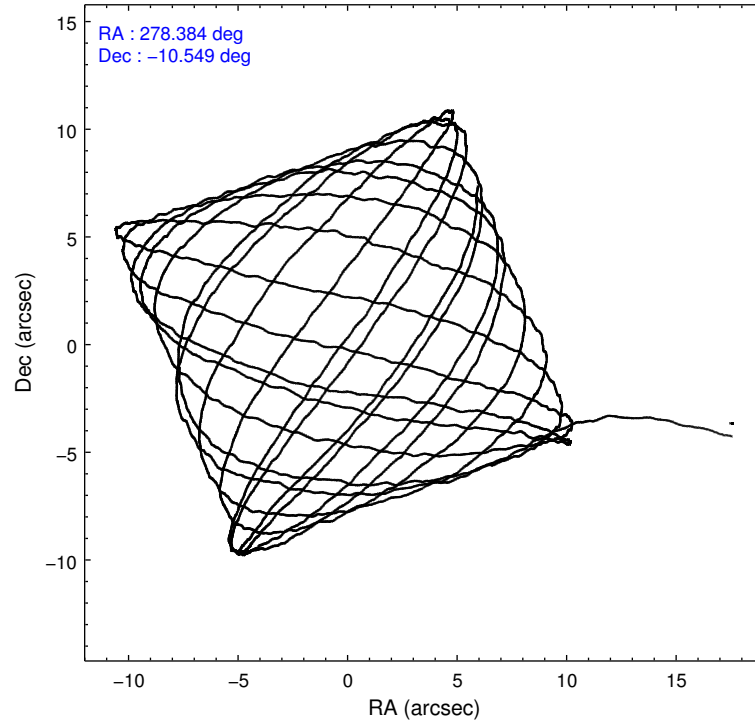
	ccd 0	ccd 1	ccd 2	ccd 3	ccd 6	ccd 7		ccd 0	ccd 1	ccd 2	ccd 3	ccd 6	ccd 7
level 1 events	47164	45343	48906	49979	52495	87337	grade 0 events	2629	2555	2385	2520	3265	8241
rejected events	41113	39130	43353	44144	45513	33651		5%	5%	4%	5%	6%	9%
rejected %	87%	86%	88%	88%	86%	38%	grade 1 events	27	15	13	19	22	111
								0%	0%	0%	0%	0%	0%
							grade 2 events	1263	1303	1172	1242	1350	11950
								2%	2%	2%	2%	2%	13%
							grade 3 events	604	626	533	475	630	5578
								1%	1%	1%	0%	1%	6%
							grade 4 events	586	622	472	577	615	5432
								1%	1%	0%	1%	1%	6%
							grade 5 events	1654	1756	1459	1669	1800	5846
								3%	3%	2%	3%	3%	6%
							grade 6 events	974	1117	993	1024	1126	22526
								2%	2%	2%	2%	2%	25%
							grade 7 events	39427	37349	41879	42453	43687	27653
								83%	82%	85%	84%	83%	31%

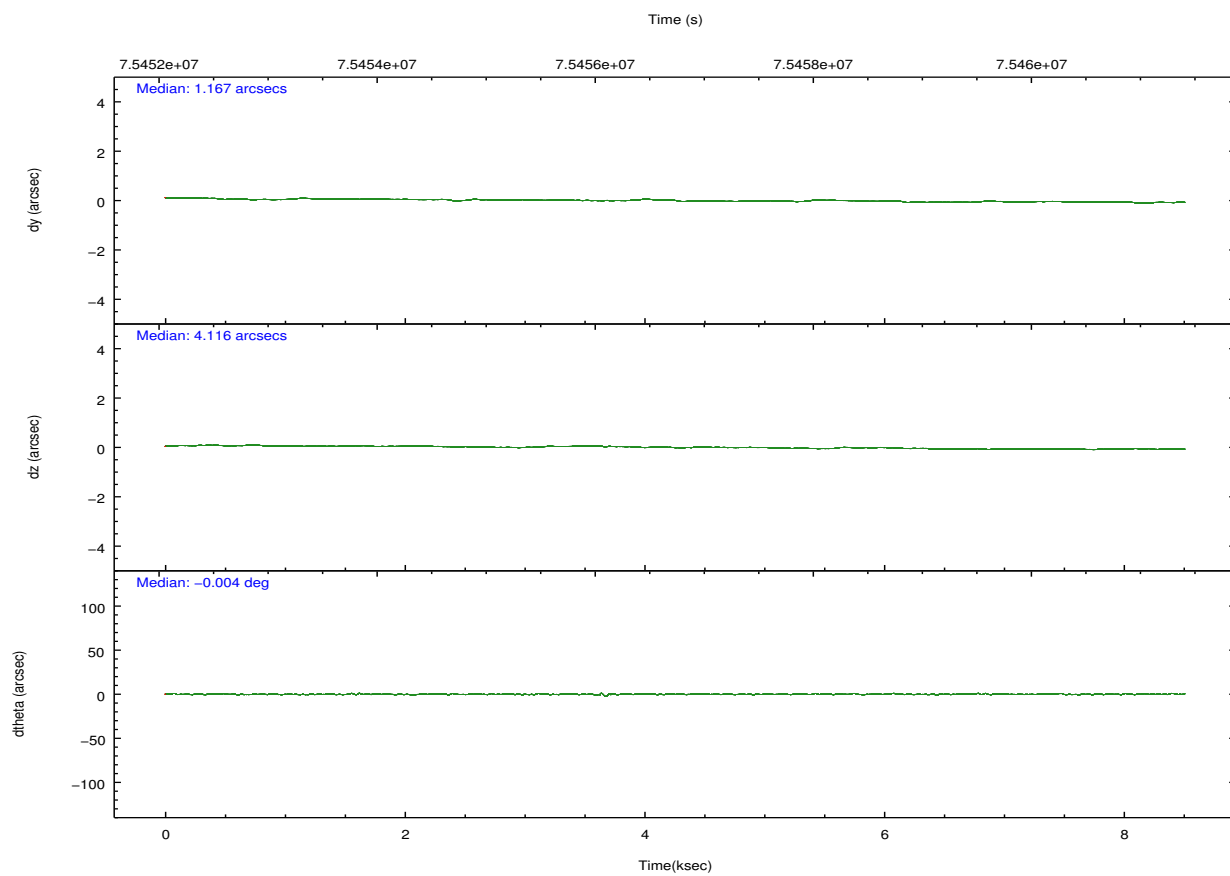
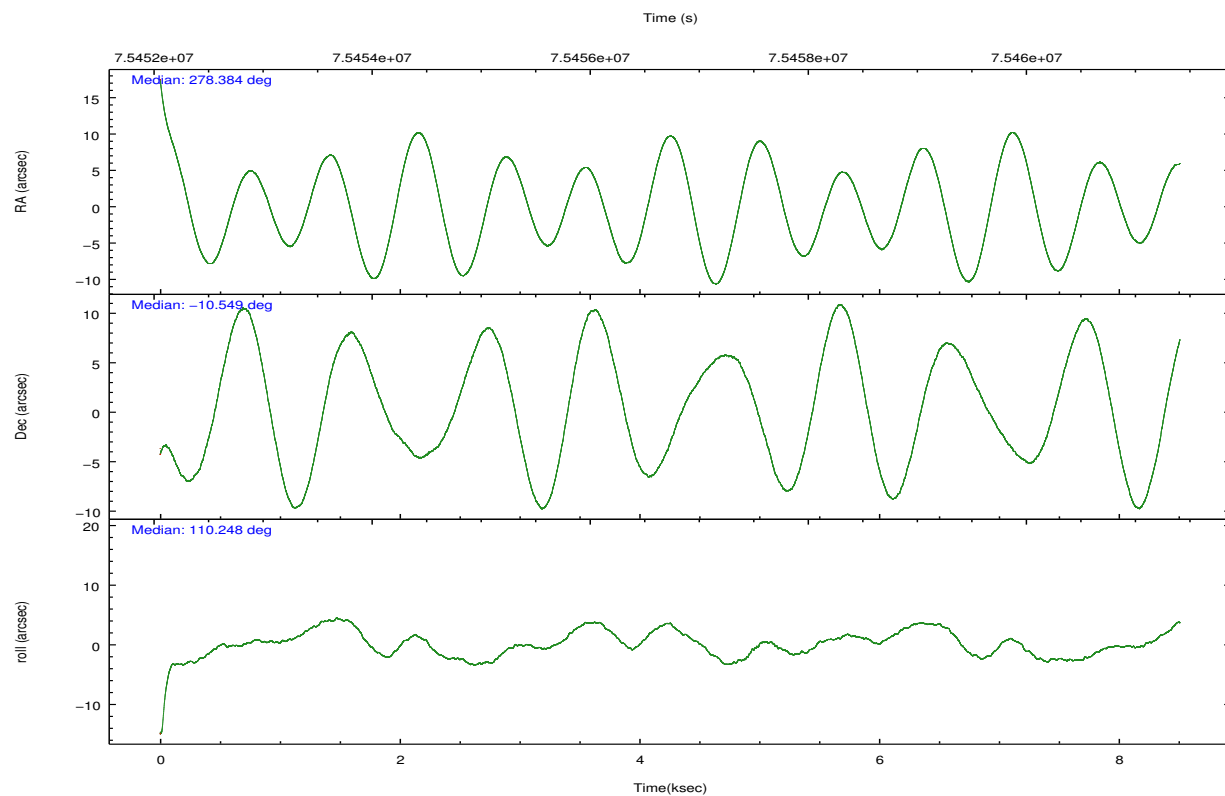
2.2 Compared Parameters

Parameter	Planned	Actual
Instrument	ACIS	ACIS
Detector	ACIS-012367	ACIS-012367
Grating	NONE	NONE
Data mode	FAINT	FAINT
Observation mode	POINTING	POINTING
[deg] Pointing RA	278.405482	278.3839912914145
[deg] Pointing Dec	-10.565648	-10.54825351662127
[deg] Pointing Roll	110.100409	110.2530806935809
[mm] SIM focus pos	-0.684267	-0.6828225247311905
[mm] SIM defocus	0	0.001444936568705701
[mm] SIM translation stage pos	-181.348523	-181.3525340709197
[mm] SIM translation stage offset	-8.784000000000001	-8.779988512088124
[s] Observation start time (MET)	75452985.184000	75451869.49156401
Observation start date	2000-05-23T07:08:41	2000-05-23T06:51:09
[s] Observation end time (MET)	75460985.184000	75461119.604404
Observation end date	2000-05-23T09:22:01	2000-05-23T09:25:19
Read mode	TIMED	TIMED

Parameter	Planned	Actual
Obspar format version number	7	7
Obspar file type	PREDICTED	ACTUAL
Obspar update status	NONE	UPDATED
Number of optional ACIS chips dropped	0	0
On-chip summing requested	N	N
Subarray requested	NONE	NONE
Alternating exposures requested	N	N
[s] Primary exposure time	0.000000	3.2

2.3 Aspect



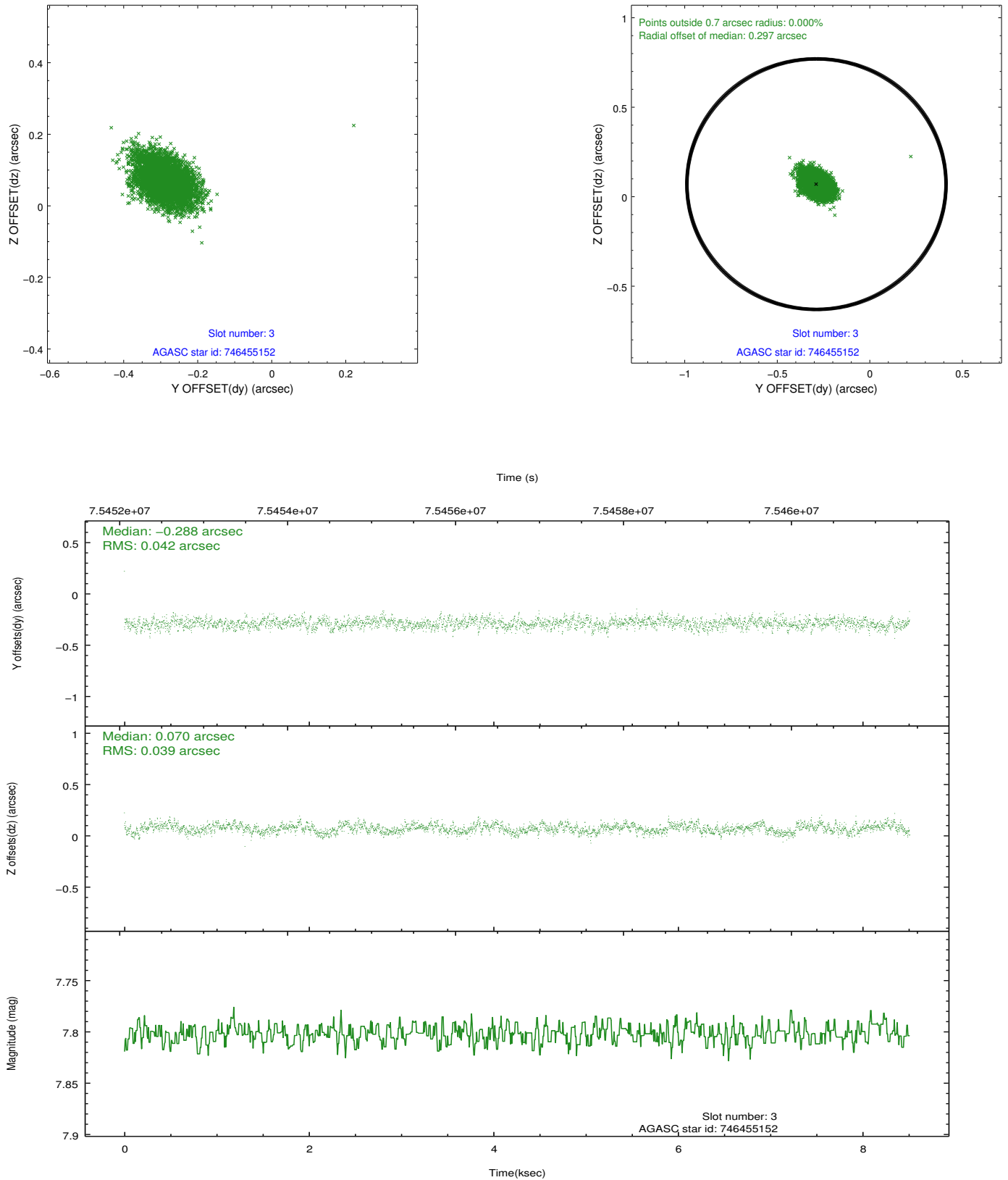


Slot Statistics

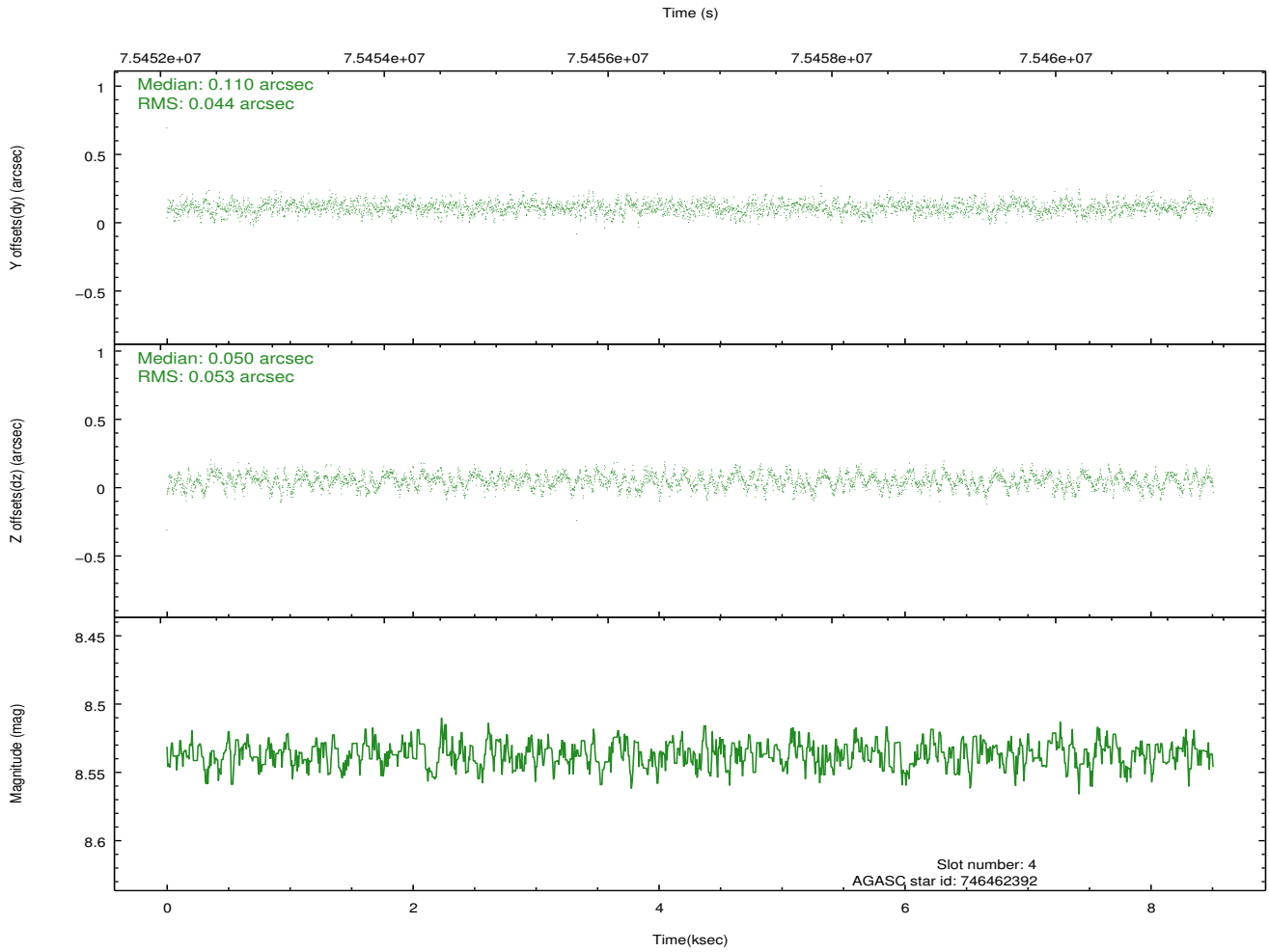
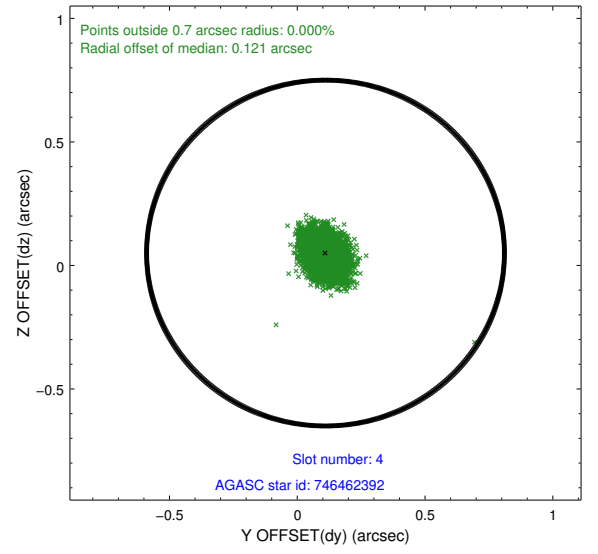
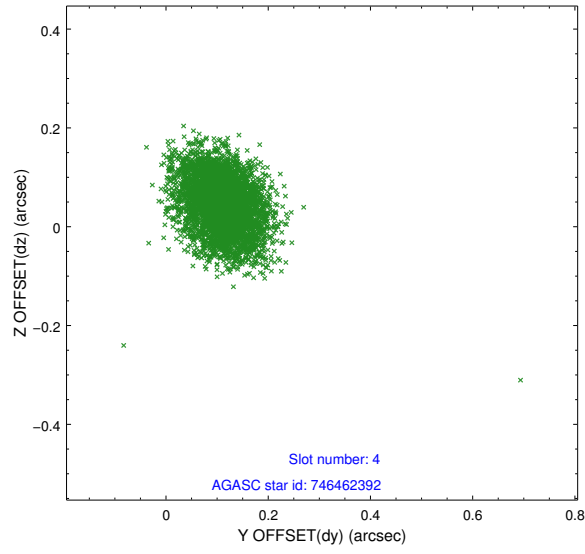
slot	status	id	mag	n_pts	med_dy	med_dz	dr1	dr2	ra	dec	mean_y	mean_z
0	FID	ACIS-S-2	7.09	2076	-0.049	-0.073	0.007	0.011	0.000000	0.000000	-753.19	-1906.11
1	FID	ACIS-S-4	7.18	2076	0.063	0.043	0.006	0.011	0.000000	0.000000	2159.92	1.70
2	FID	ACIS-S-5	7.22	2076	-0.046	0.038	0.006	0.011	0.000000	0.000000	-1805.17	-3.87
3	GUIDE	746455152	7.80	4151	-0.288	0.070	0.059	0.100	278.447893	-9.976732	1940.06	-870.01
4	GUIDE	746462392	8.54	4152	0.110	0.050	0.073	0.118	279.038421	-10.890715	-1868.51	-1699.09
5	GUIDE	746455112	8.93	4150	0.074	0.060	0.085	0.136	278.266531	-10.703234	-295.77	631.04
6	GUIDE	746460328	9.81	4148	-0.102	0.065	0.112	0.177	278.603974	-9.898096	2015.62	-1486.94
7	GUIDE	746995400	9.51	4149	0.206	-0.248	0.108	0.173	278.078957	-11.289885	-2051.40	1977.68

2.4 Star Slots

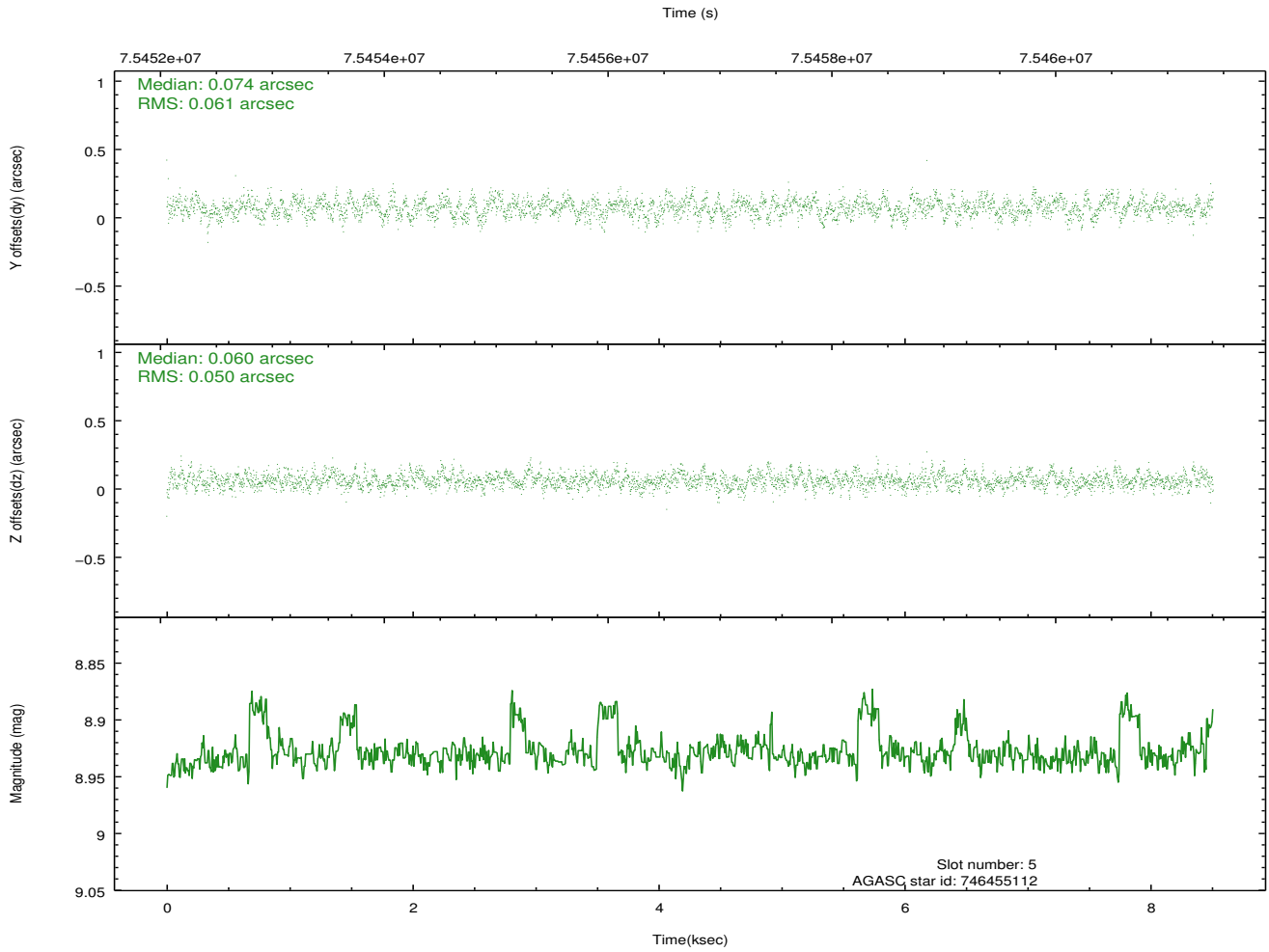
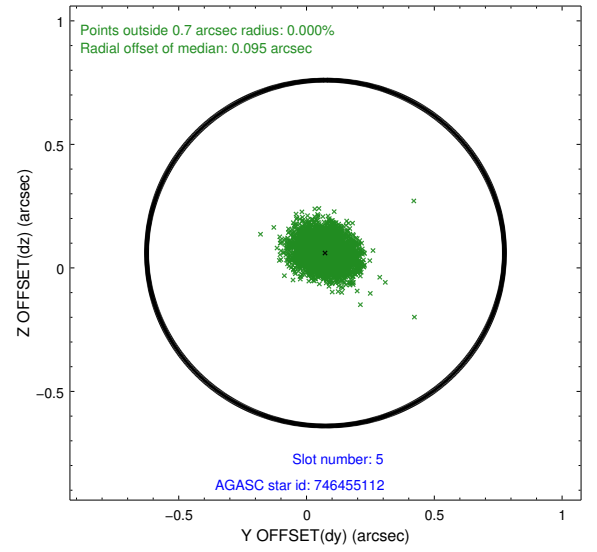
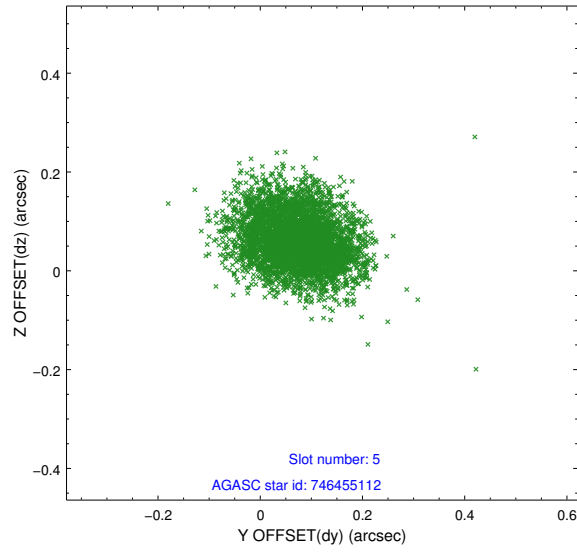
2.4.1 Slot 3



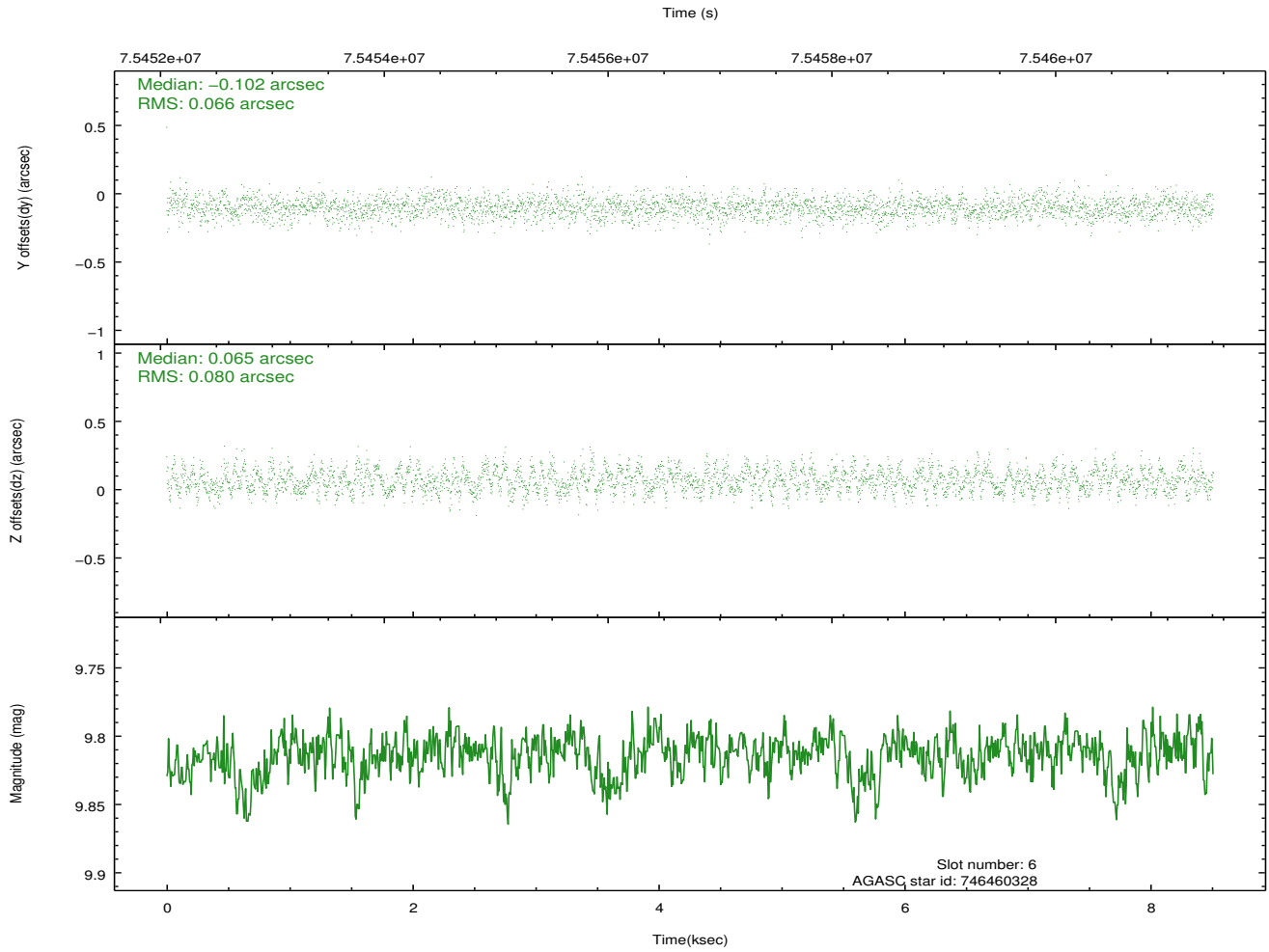
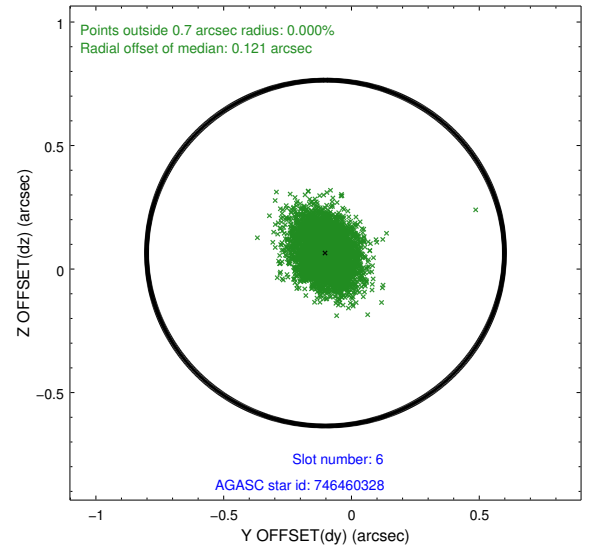
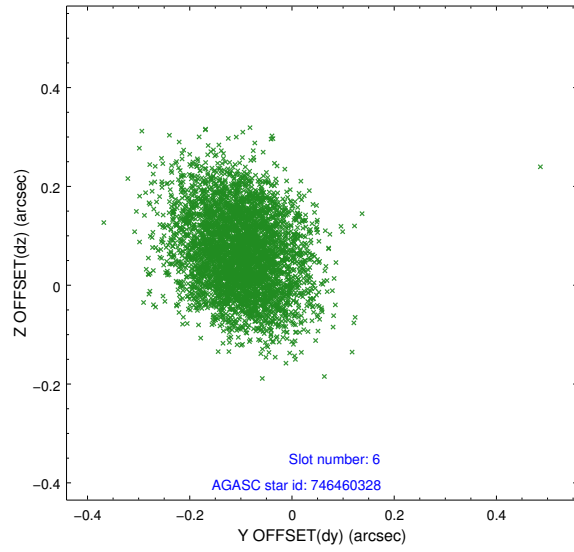
2.4.2 Slot 4



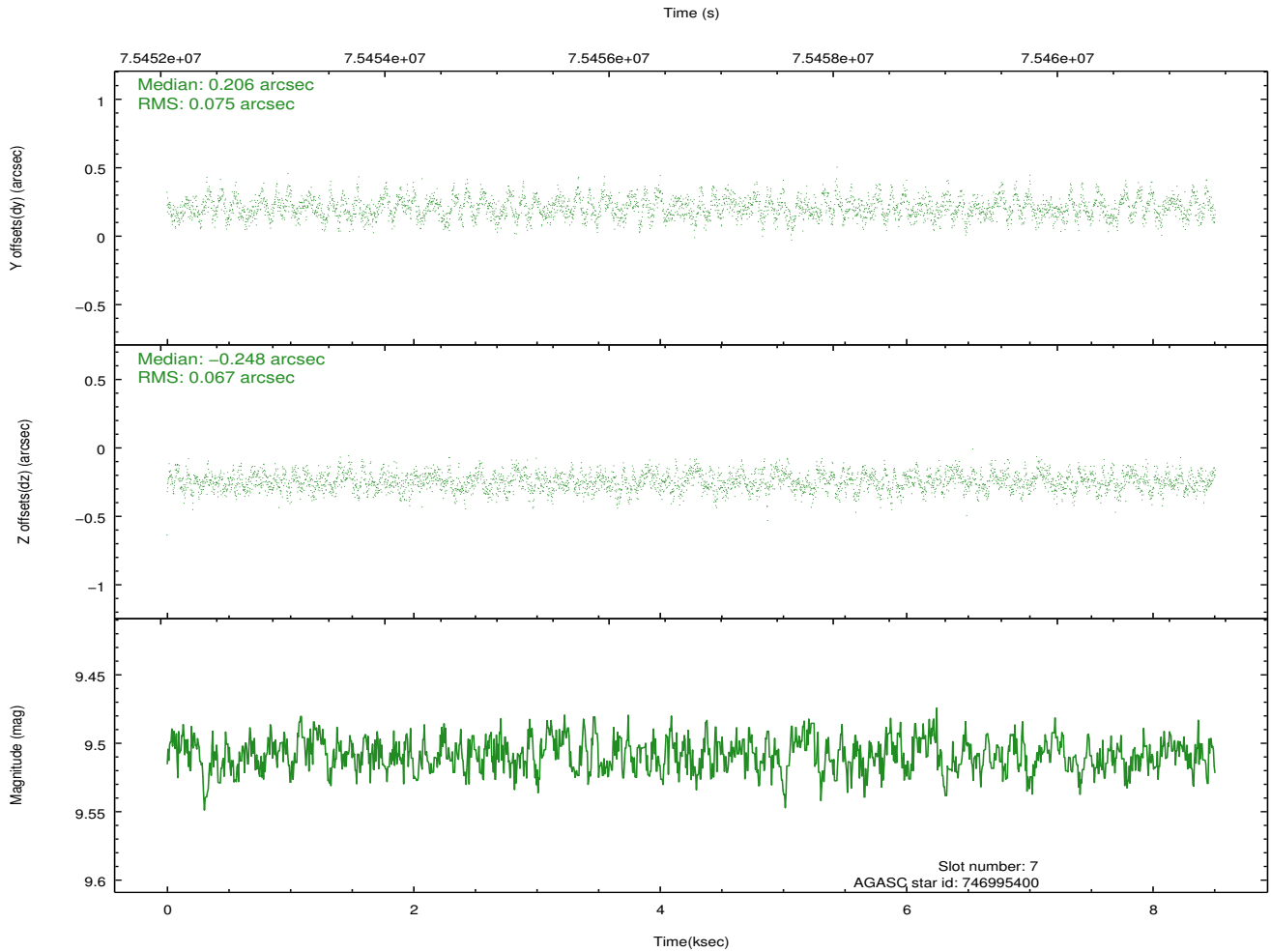
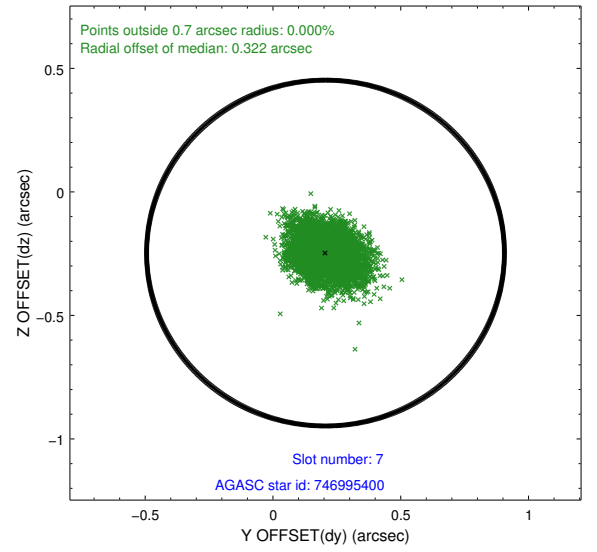
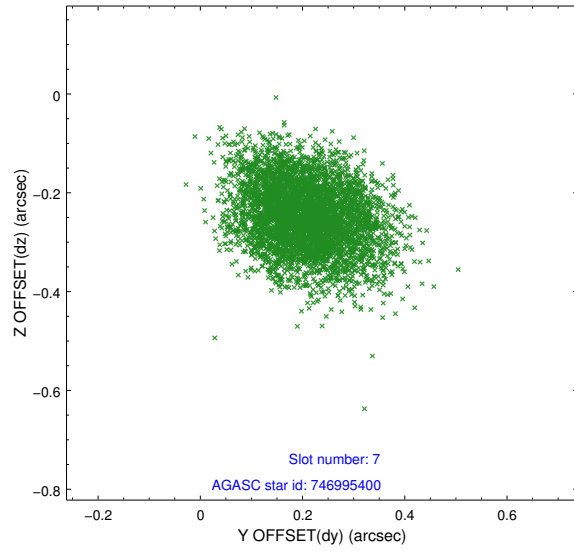
2.4.3 Slot 5



2.4.4 Slot 6

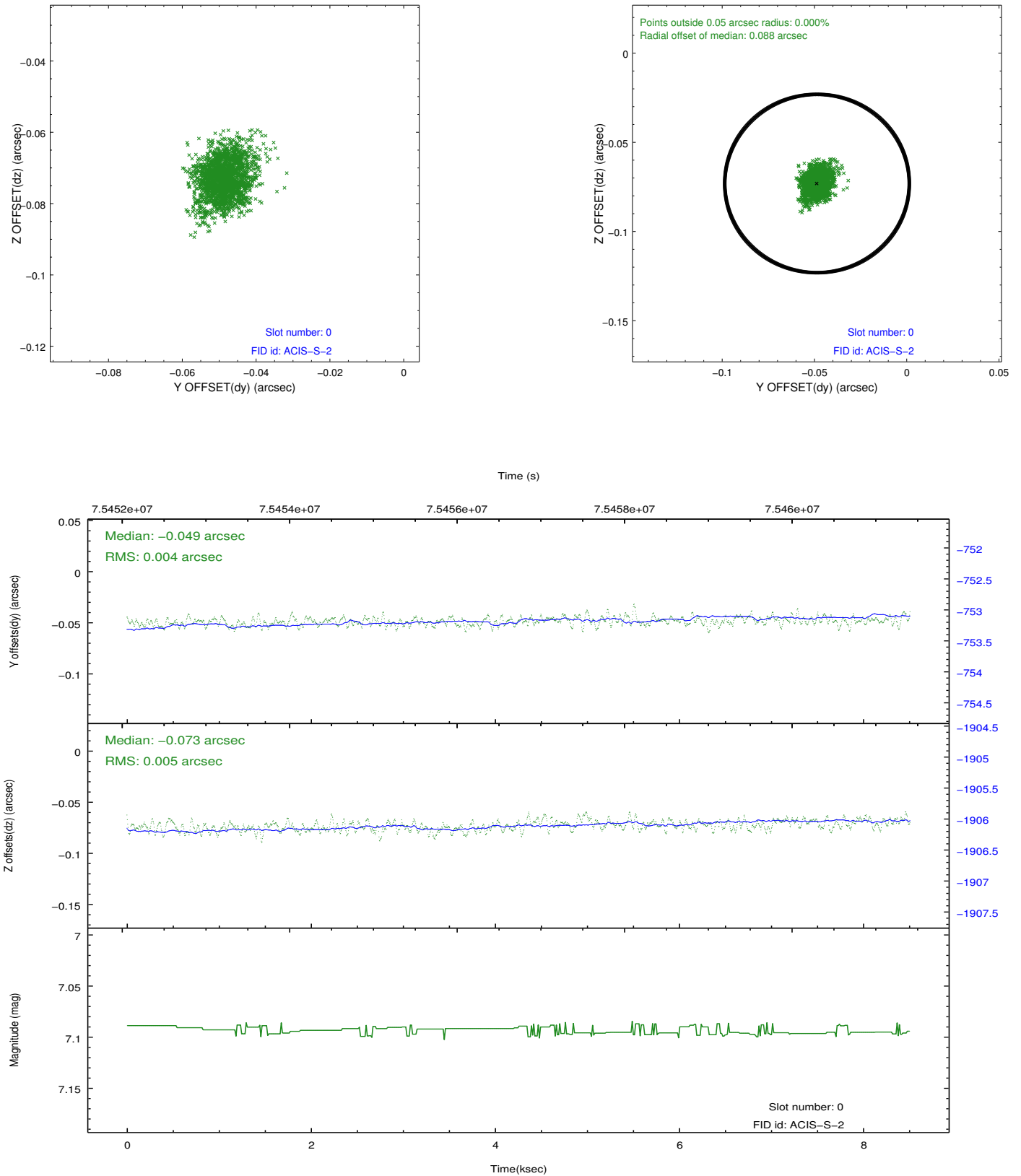


2.4.5 Slot 7

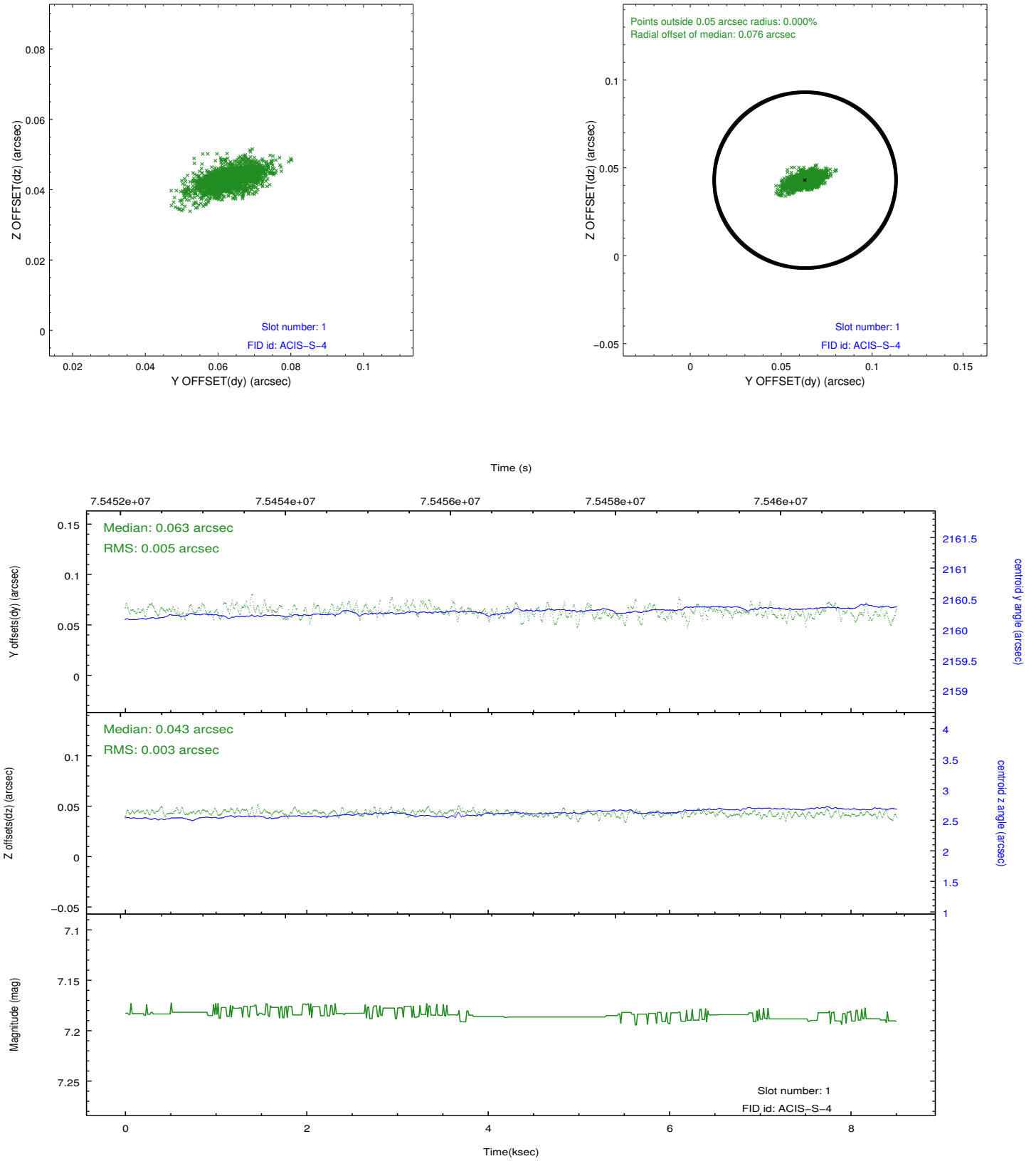


2.5 FID Slots

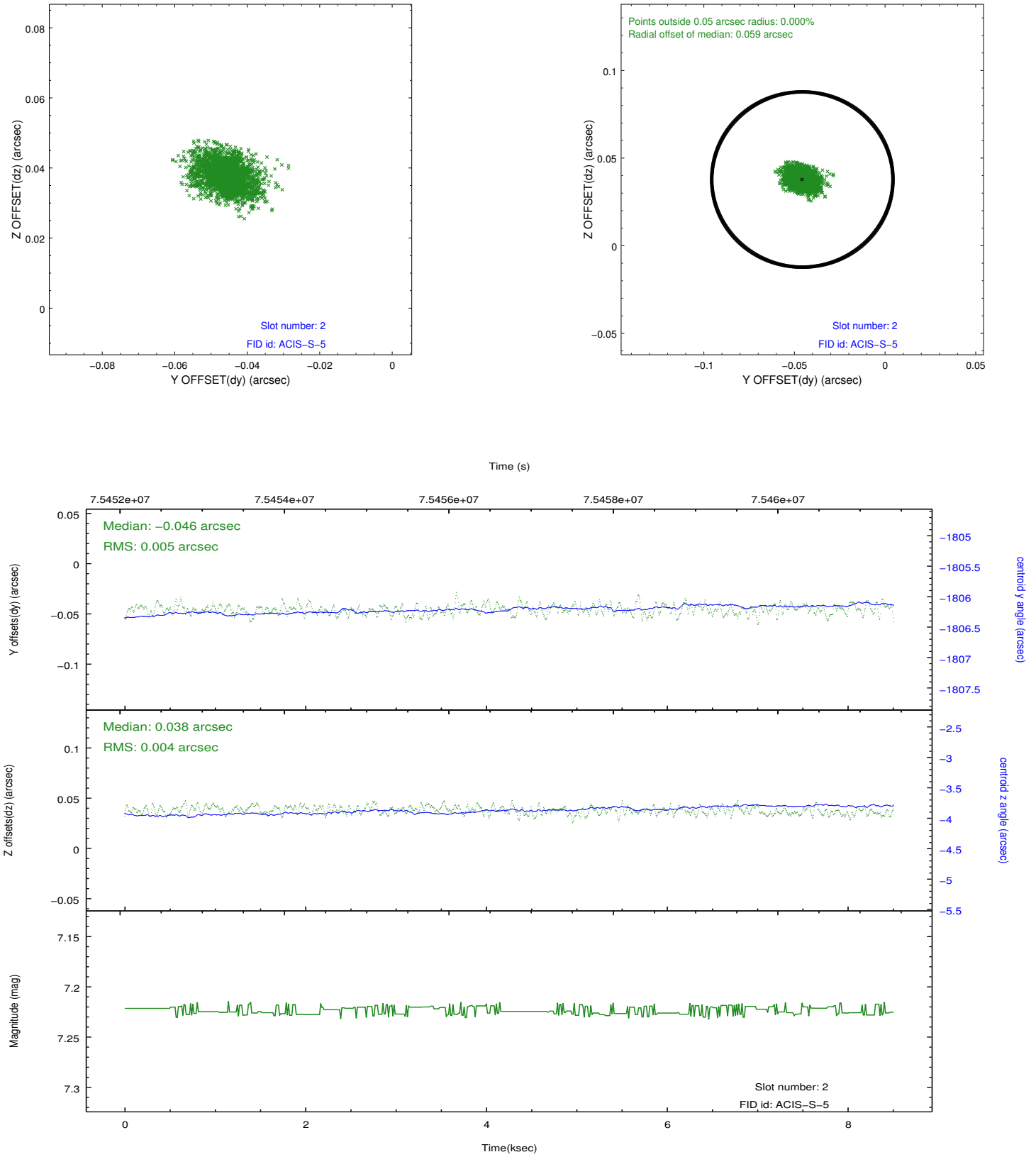
2.5.1 Slot 0



2.5.2 Slot 1



2.5.3 Slot 2



A Summary

A.1 Status

V&V Scientist	Jen Lauer
V&V Date (YYYY-MM-DD)	2012.08.30
V&V Edition	1
V&V Disposition and Status	OK
V&V Charge Time	7.836

A.2 Comments