

V&V Reference Report

L2 ASCDS Version : 8.4.5

Observation 148 - L2 Version 6
Chandra X-Ray Center

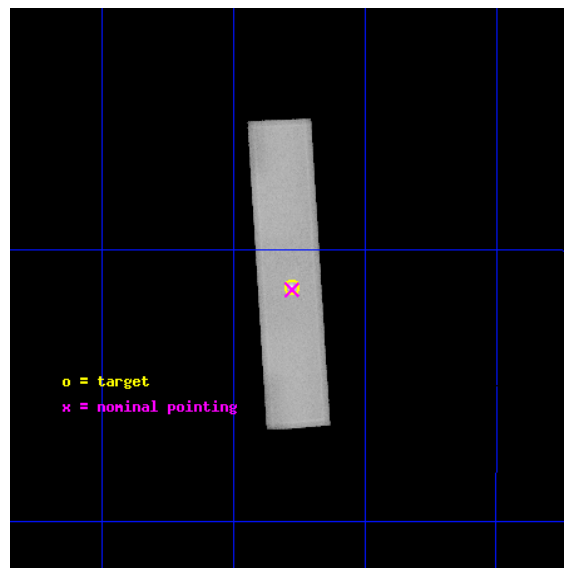
L2 Processing Date : Sep 4 2012

Contents

1	Front	2
2	OBI	3
2.1	OBI	3
2.1.1	Images	3
2.1.2	Parameters	4
2.1.3	Events	4
2.2	Compared Parameters	5
2.3	Aspect	6
2.4	Star Slots	9
2.4.1	Slot 3	9
2.4.2	Slot 4	10
2.4.3	Slot 5	11
2.4.4	Slot 6	12
2.4.5	Slot 7	13
2.5	FID Slots	14
2.5.1	Slot 0	14
2.5.2	Slot 1	15
A	Summary	16
A.1	Status	16
A.2	Comments	16

1 Front

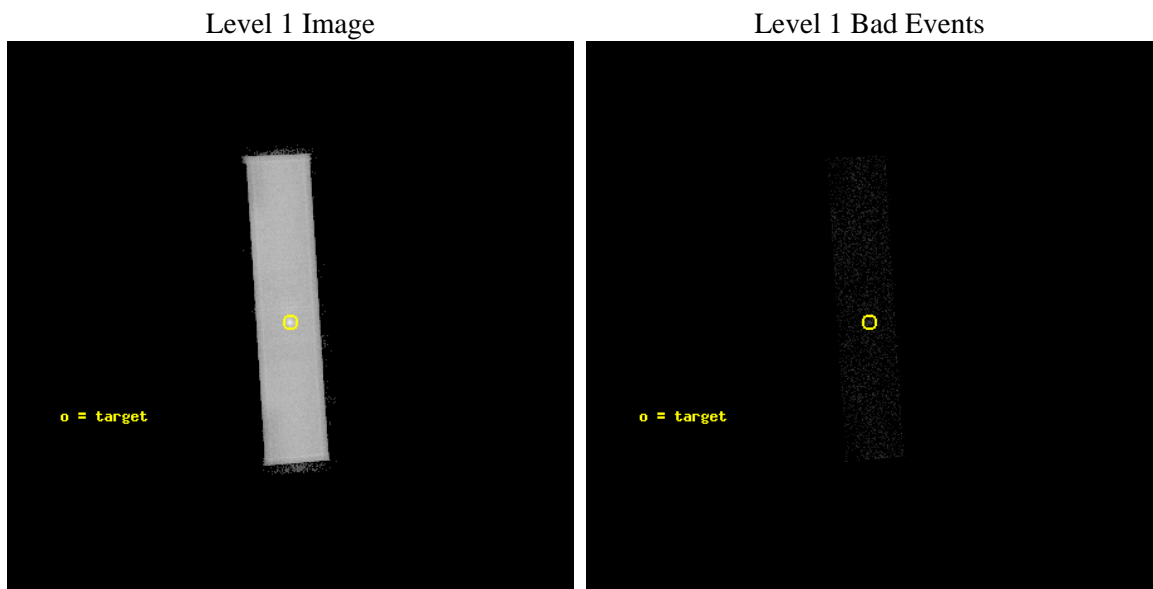
seq_num	590016	Sequence number
obs_id	148	Observation id
title	HRC RESPONSE TO CONTINUUM SOURCE.	Proposal title
observer	Dr. CXC Calibration	Principal investigator
object	G21.5-0.9 [HRC-S, Offsets=0,0,0 CENTER MCP]	Source name
ra_targ	278.389583	Observer's specified target RA [deg]
dec_targ	-10.568528	Observer's specified target Dec [deg]
ra_nom	278.38891577927	Nominal RA [deg]
dec_nom	-10.573267031659	Nominal Dec [deg]
roll_nom	266.30416148837	Nominal Roll [deg]
revision	6	Processing version of data
ontime	10120.081630021	[s]
livetime	10006.433967188	Ontime multiplied by DTCOR
l2events	529591	Number of level 2 events



2 OBI

2.1 OBI

2.1.1 Images



2.1.2 Parameters

obi_num	0	Obi number	sched_exp_time	10300.000000	[s] Scheduled observation exposure time
ascdsver	8.4.5	Processing system revision	ontime	10120.081630021	[s]
caldsver	4.5.1.1	 	l1events	632941	Number of level 1 events
date	2012-09-04T18:11:48	Date and time of file creation			
revision	6	Processing version of data			

2.1.3 Events

Level 1 Events

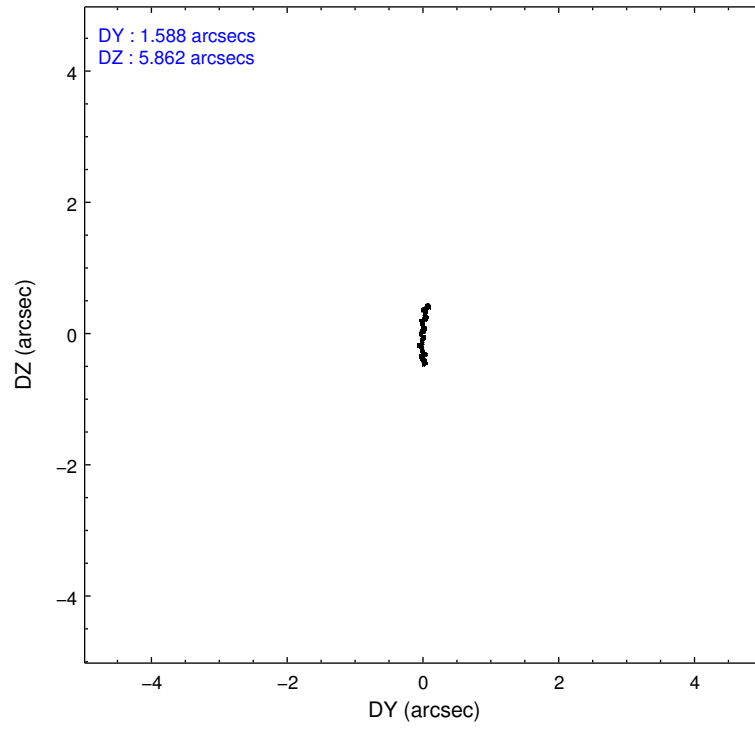
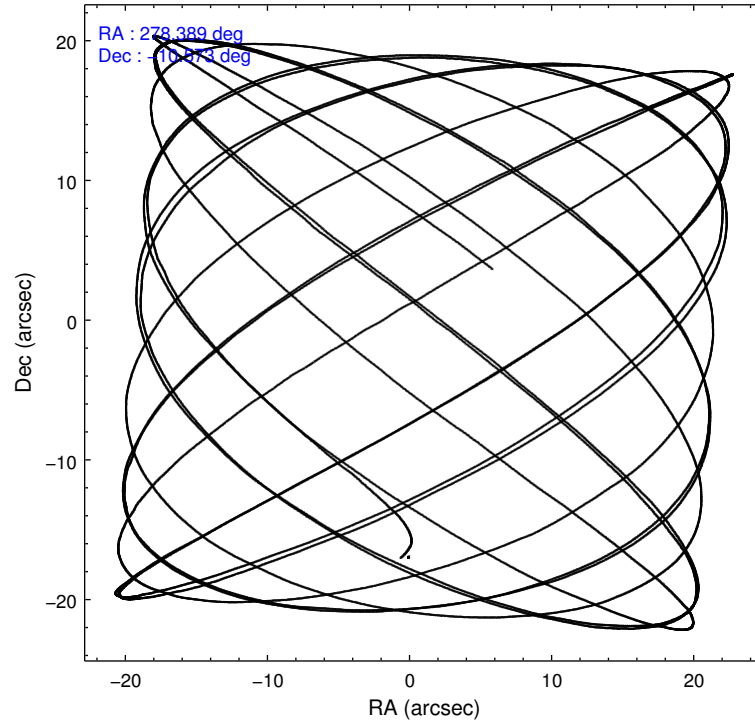
	segment 1	segment 2	segment 3
level 1 events	0	632941	0
rejected events	0	11132	0
rejected %	0%	1%	0%

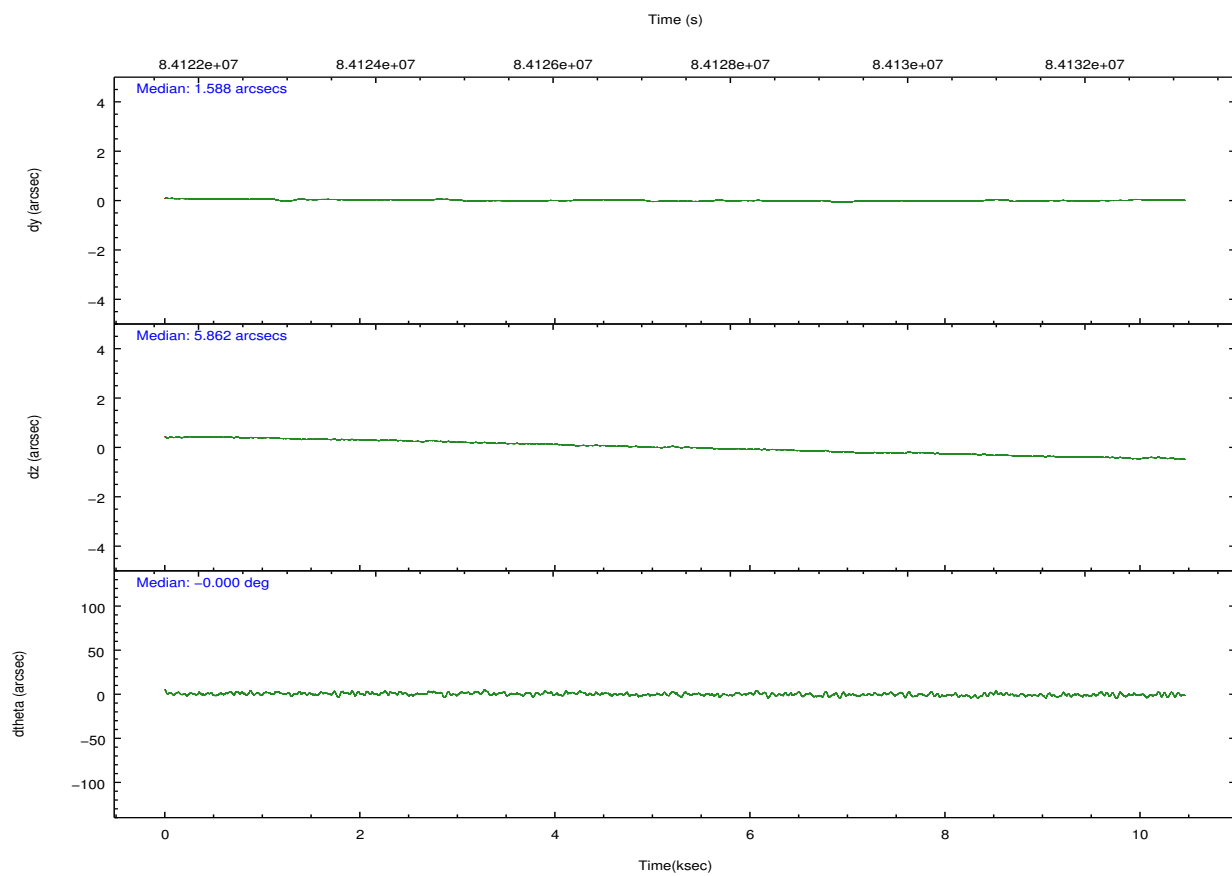
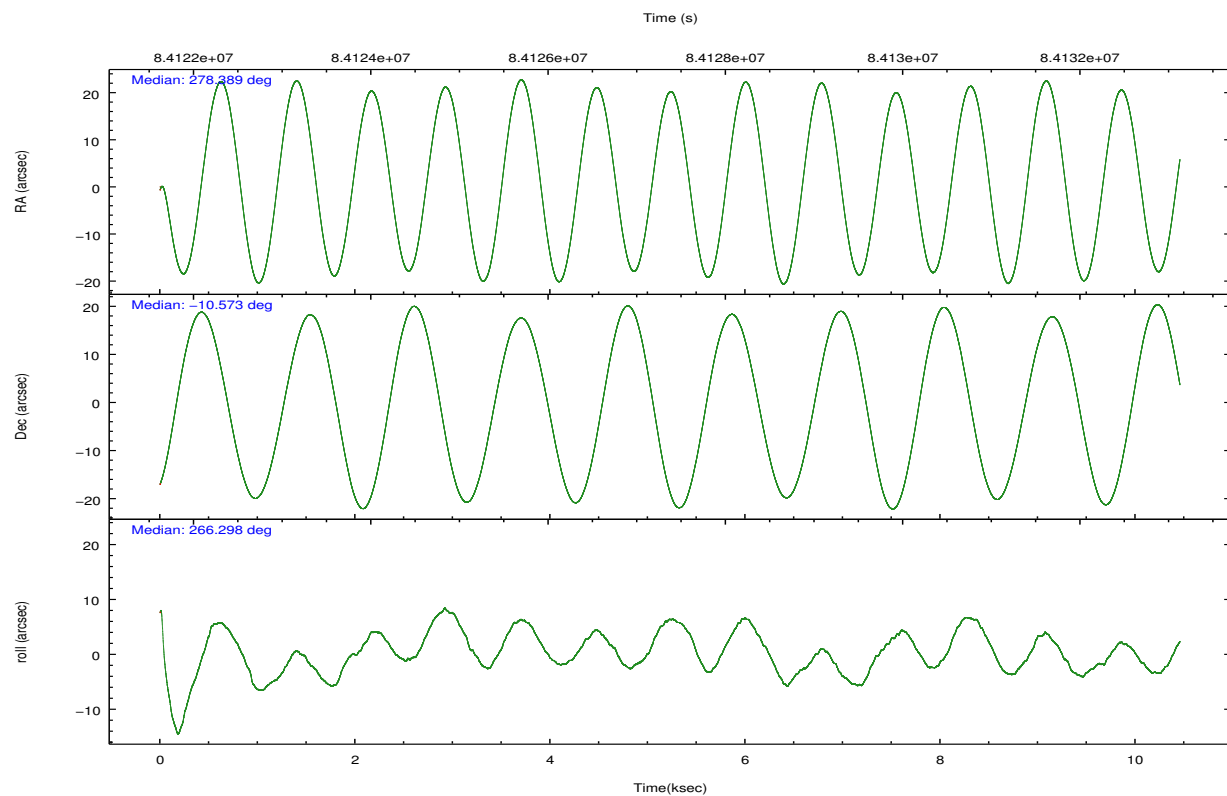
2.2 Compared Parameters

Parameter	Planned	Actual
Instrument	HRC	HRC
Detector	HRC-S	HRC-S
Grating	NONE	NONE
Data mode	OBSERVING	OBSERVING
Observation mode	POINTING	POINTING
[deg] Pointing RA	278.374967	278.3889157792678
[deg] Pointing Dec	-10.548211	-10.57326703165894
[deg] Pointing Roll	266.234251	266.3041614883745
[mm] SIM focus pos	-1.429586	-1.428180813131781
[mm] SIM defocus	0.1037507710433287	0.1051558262725154
[mm] SIM translation stage pos	250.455976	250.466033080201
[mm] SIM translation stage offset	0	-0.01005468664627074
[s] Observation start time (MET)	84122306.184000	84121158.375377
Observation start date	2000-08-31T15:17:22	2000-08-31T14:59:18
[s] Observation end time (MET)	84132606.184000	84132739.850812
Observation end date	2000-08-31T18:09:02	2000-08-31T18:12:19

Parameter	Planned	Actual
Obspar format version number	7	7
Obspar file type	PREDICTED	ACTUAL
Obspar update status	NONE	UPDATED

2.3 Aspect



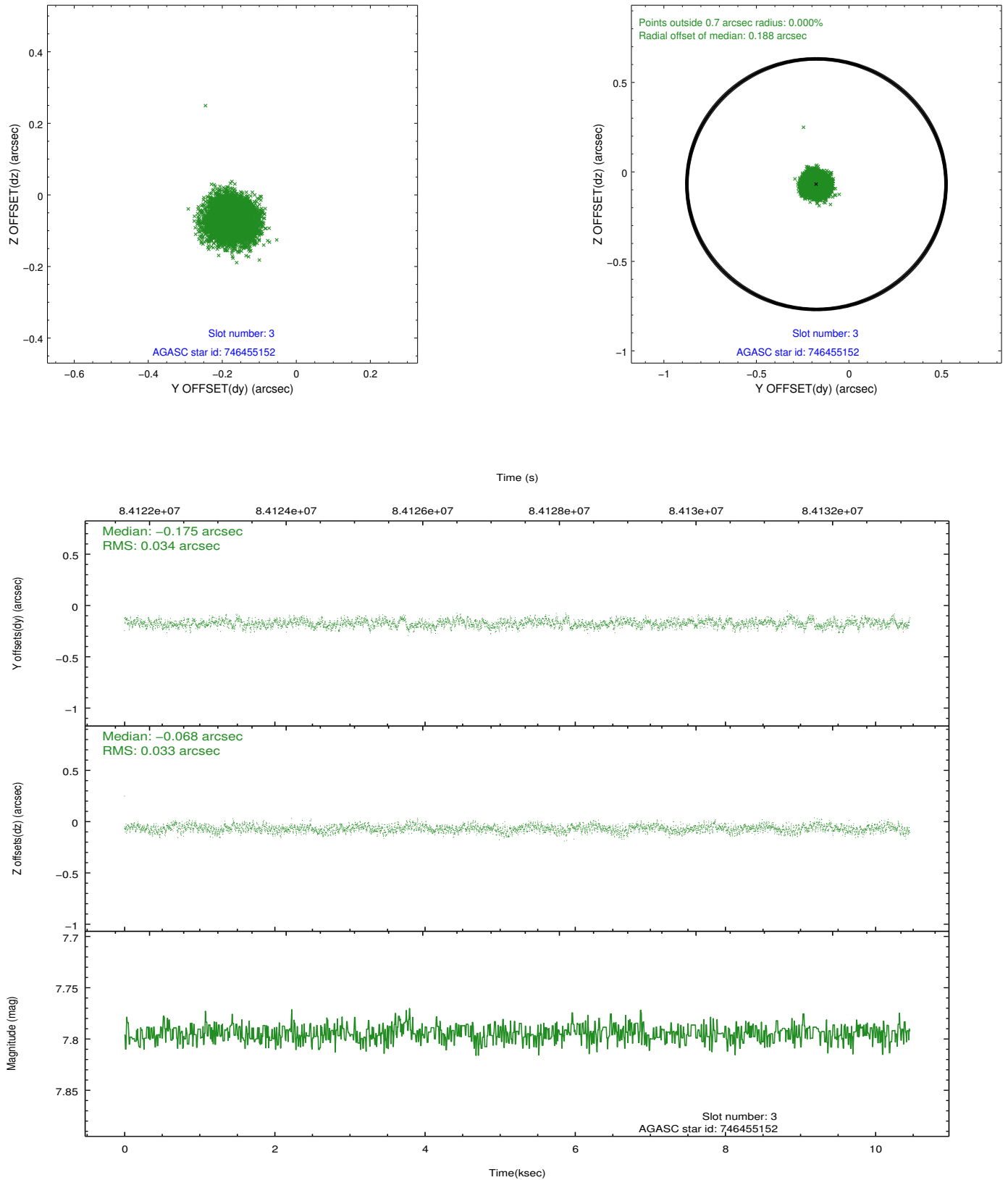


Slot Statistics

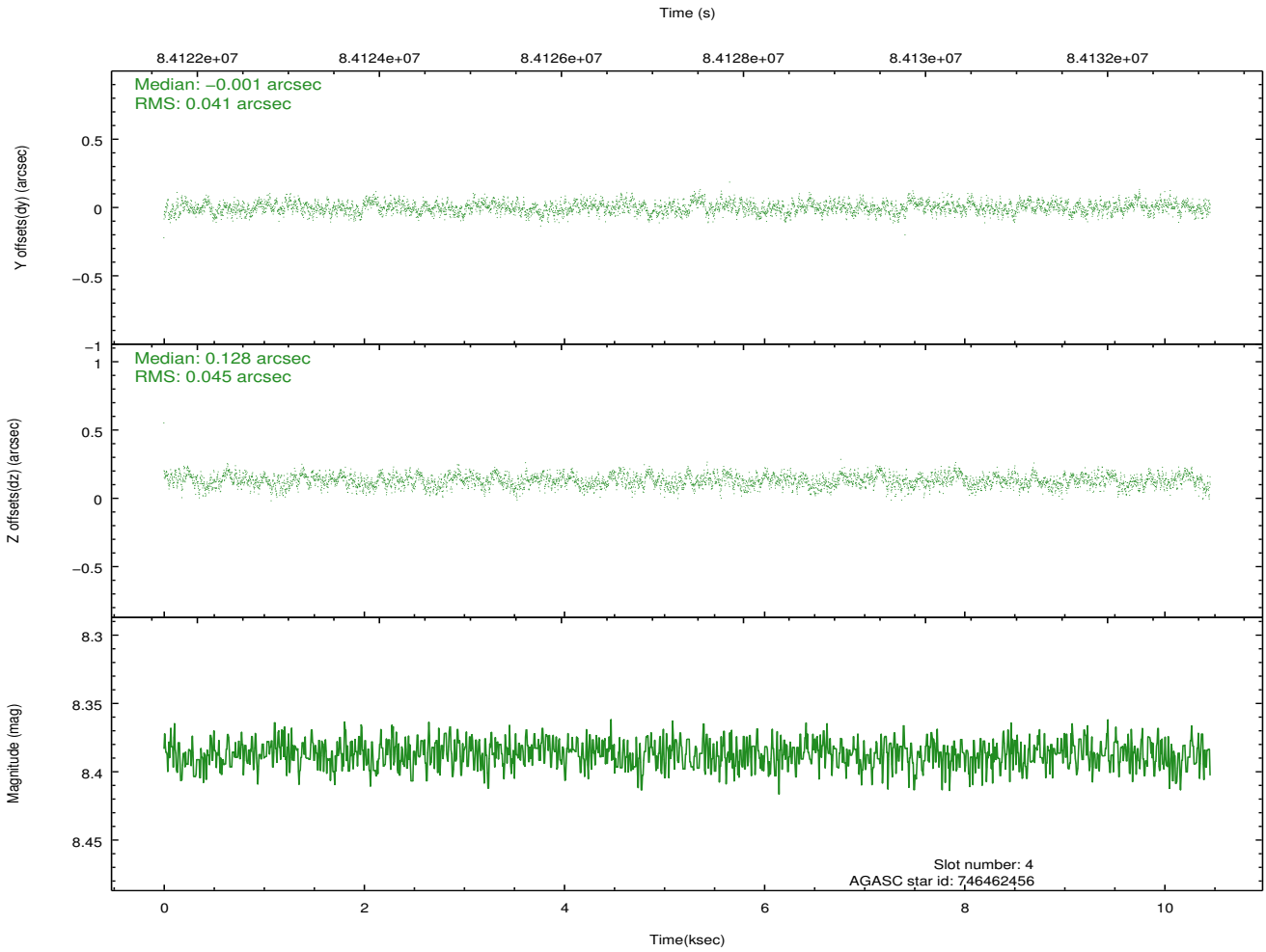
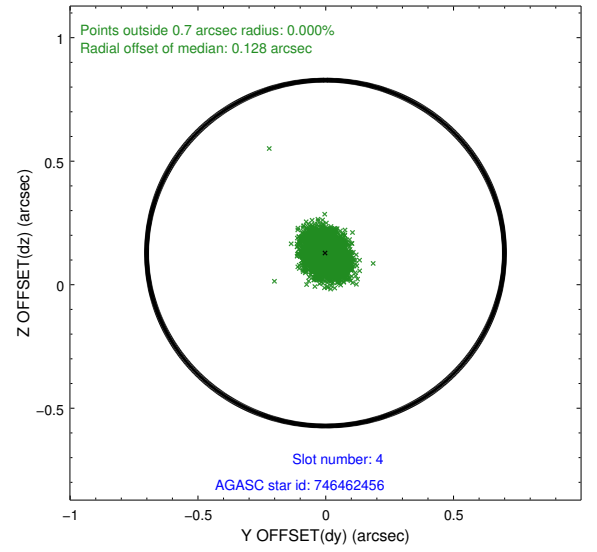
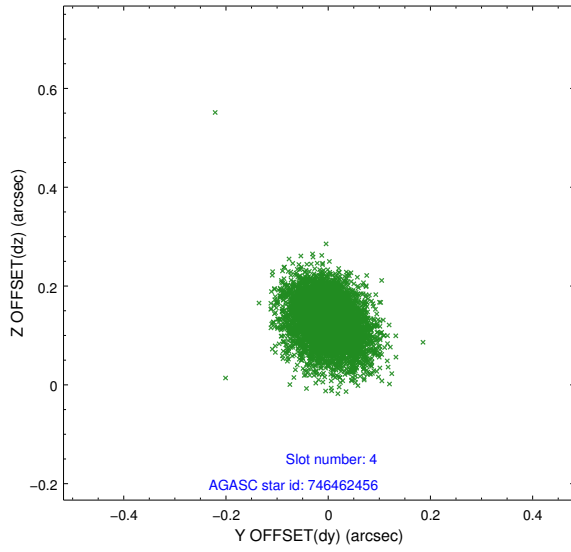
slot	status	id	mag	n_pts	med_dy	med_dz	dr1	dr2	ra	dec	mean_y	mean_z
0	FID	HRC-S-1	6.97	2550	0.124	-0.145	0.015	0.021	0.000000	0.000000	-1155.64	-454.33
1	FID	HRC-S-3	6.99	2551	0.125	-0.055	0.015	0.021	0.000000	0.000000	-1158.76	575.11
2	OMITTED		0.00	0	0.000	0.000	0.000	0.000	0.000000	0.000000	0.00	0.00
3	GUIDE	746455152	7.79	5102	-0.175	-0.068	0.051	0.080	278.447893	-9.976732	-2070.16	123.28
4	GUIDE	746462456	8.39	5100	-0.001	0.128	0.066	0.105	278.652171	-10.530173	-129.36	975.62
5	GUIDE	746455112	8.93	5101	0.234	-0.239	0.071	0.117	278.266531	-10.703234	582.23	-345.35
6	GUIDE	746460272	8.92	5100	-0.049	0.113	0.081	0.131	278.847488	-10.152127	-1531.83	1577.86
7	GUIDE	746461728	9.79	5093	-0.012	0.064	0.112	0.183	278.986921	-10.530755	-203.54	2158.28

2.4 Star Slots

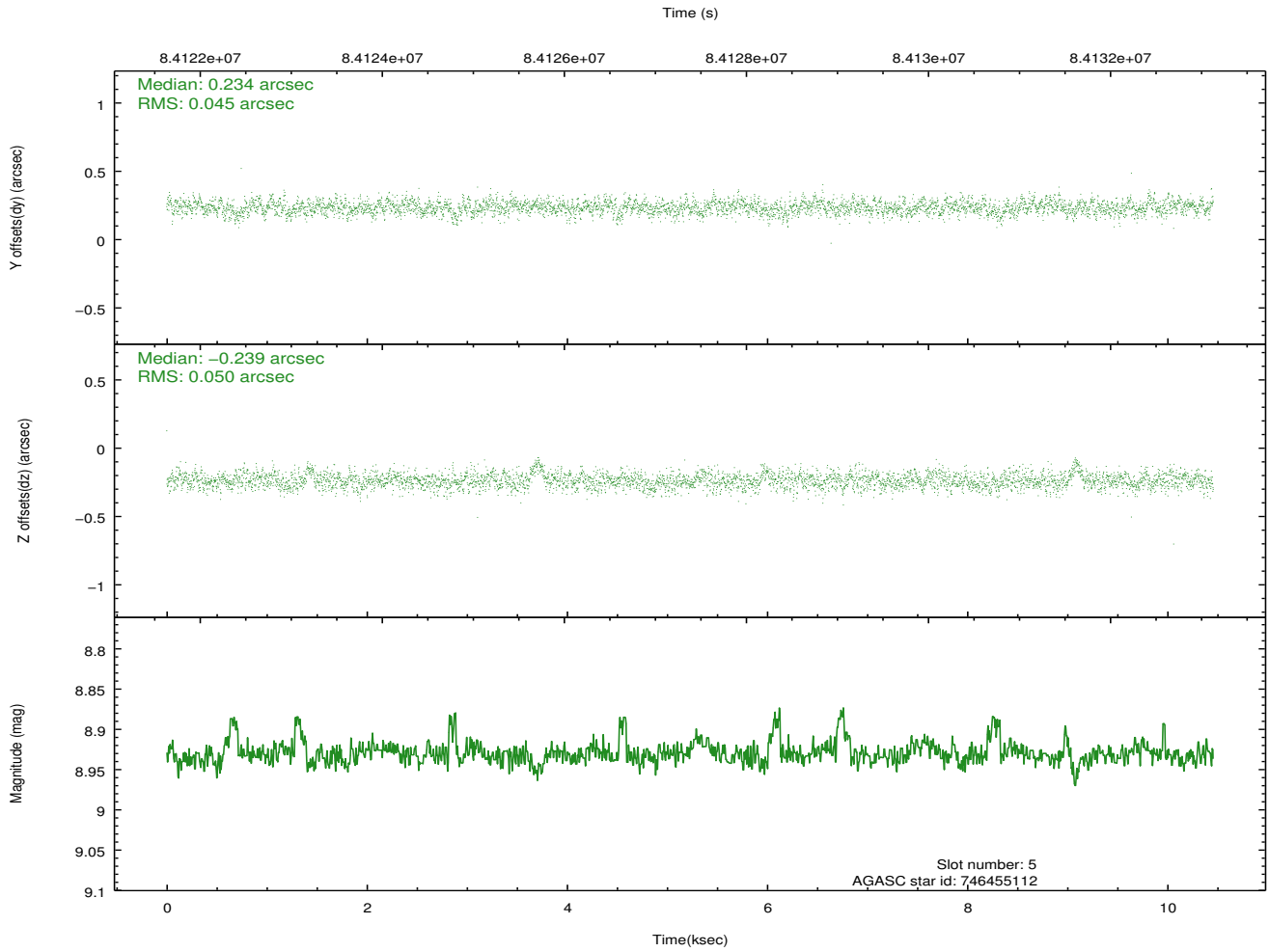
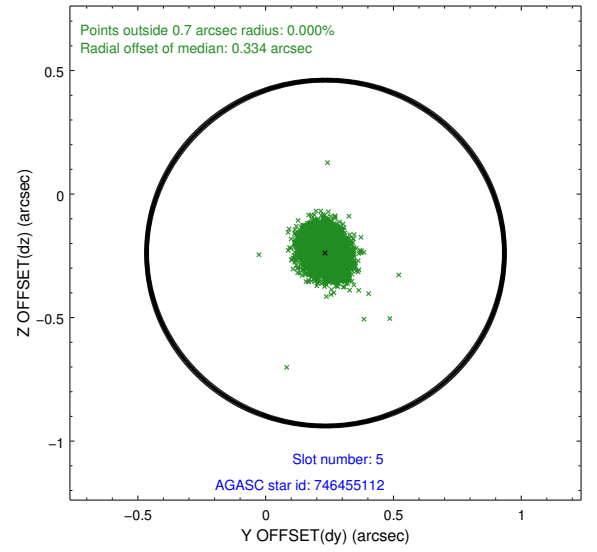
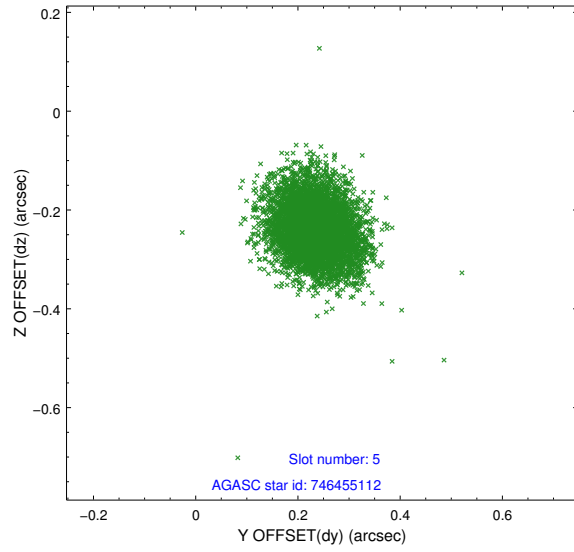
2.4.1 Slot 3



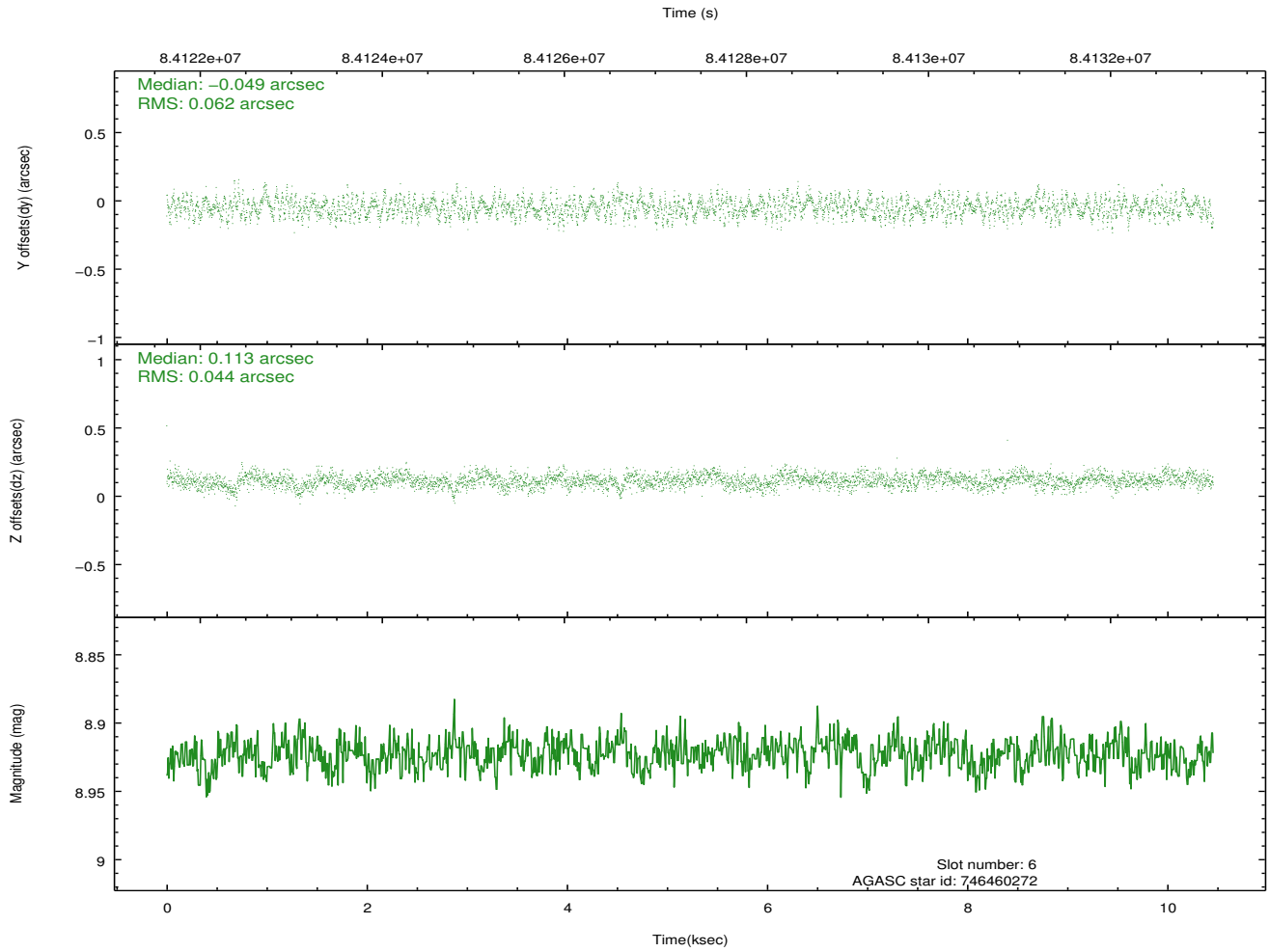
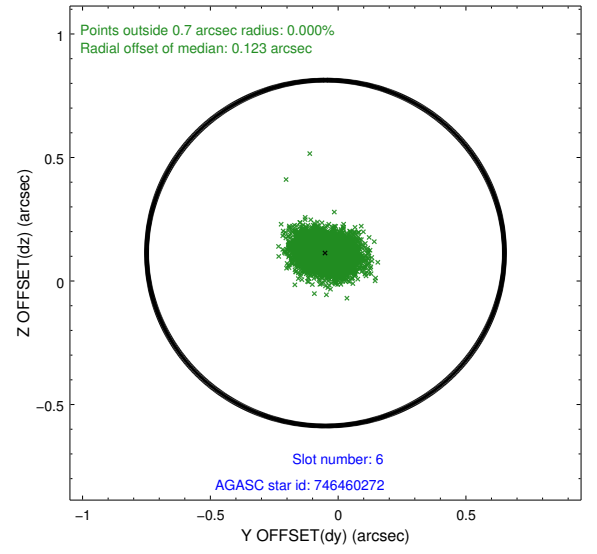
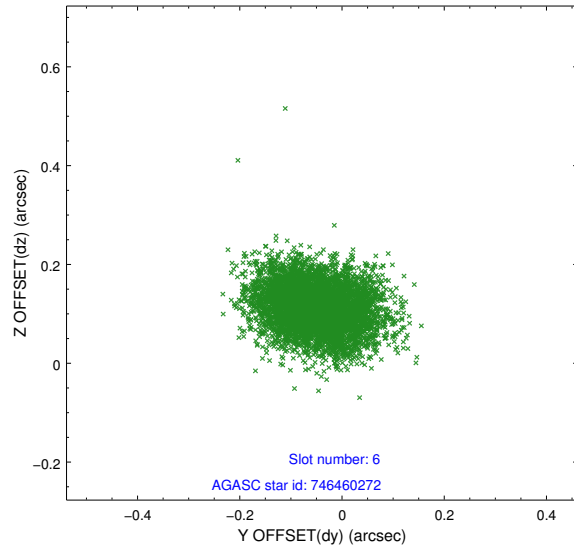
2.4.2 Slot 4



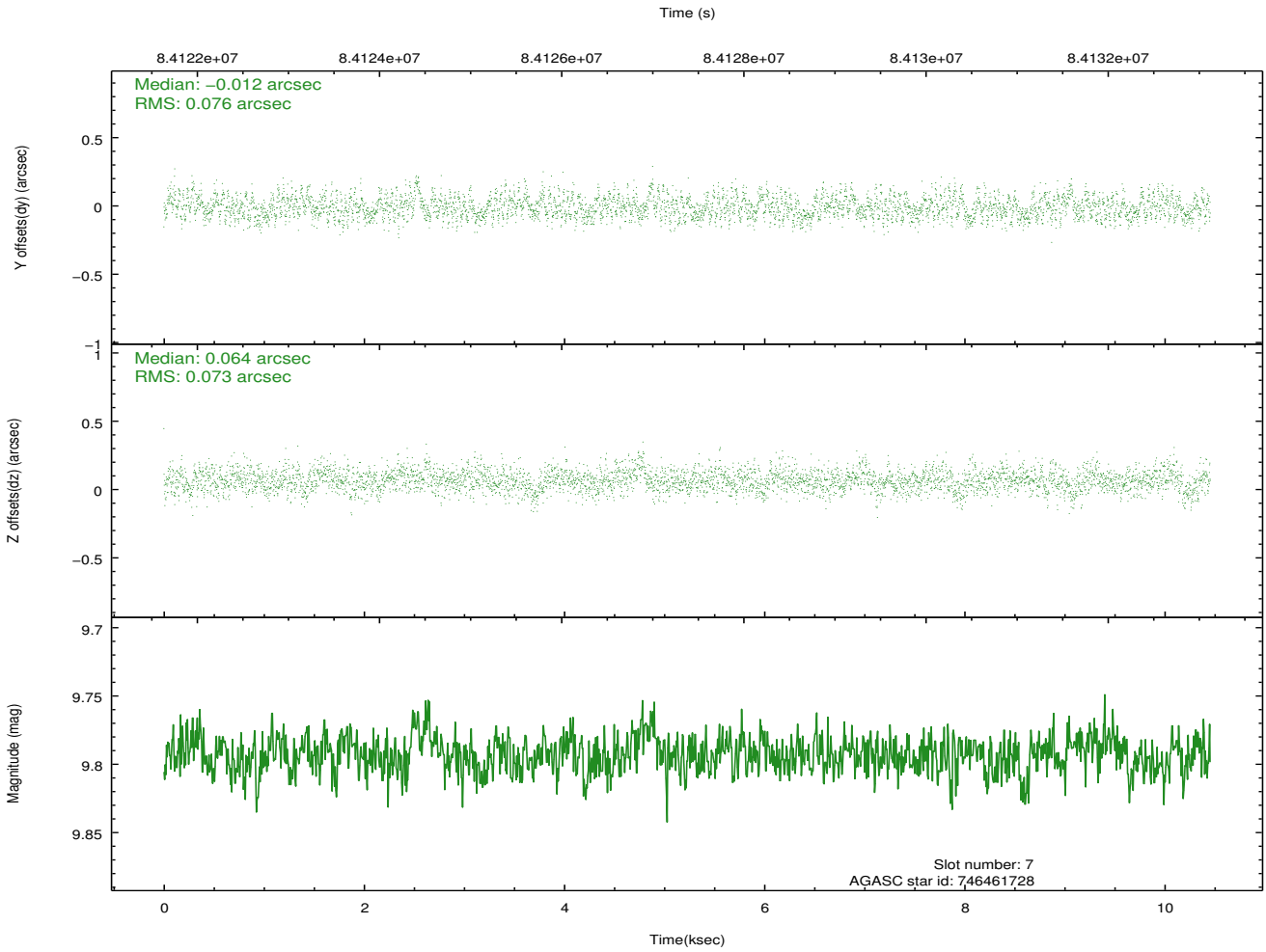
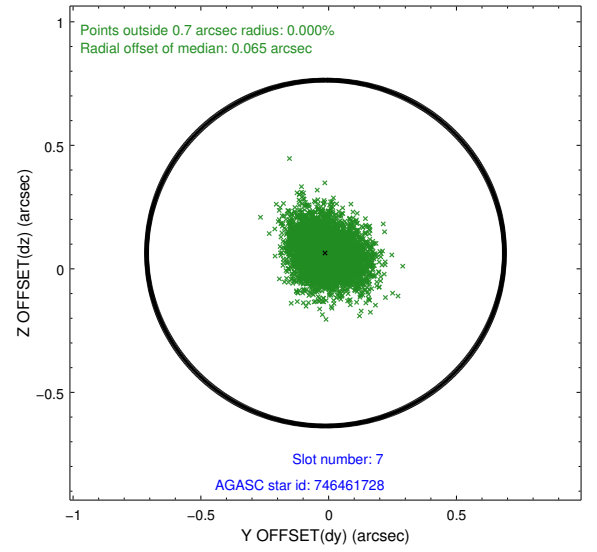
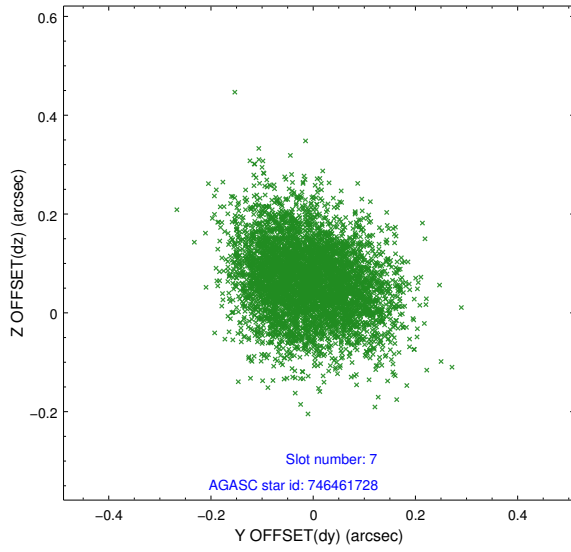
2.4.3 Slot 5



2.4.4 Slot 6

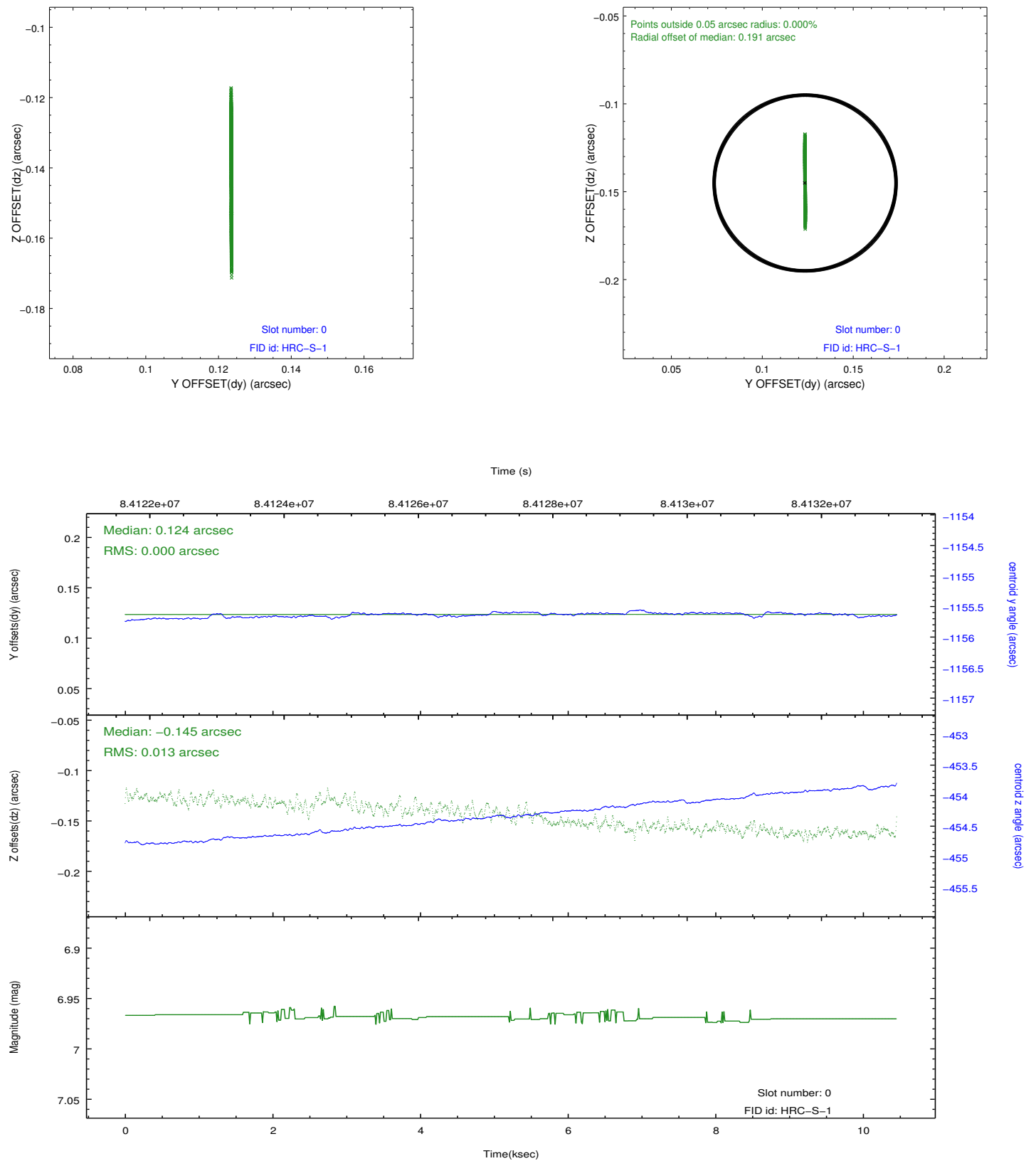


2.4.5 Slot 7

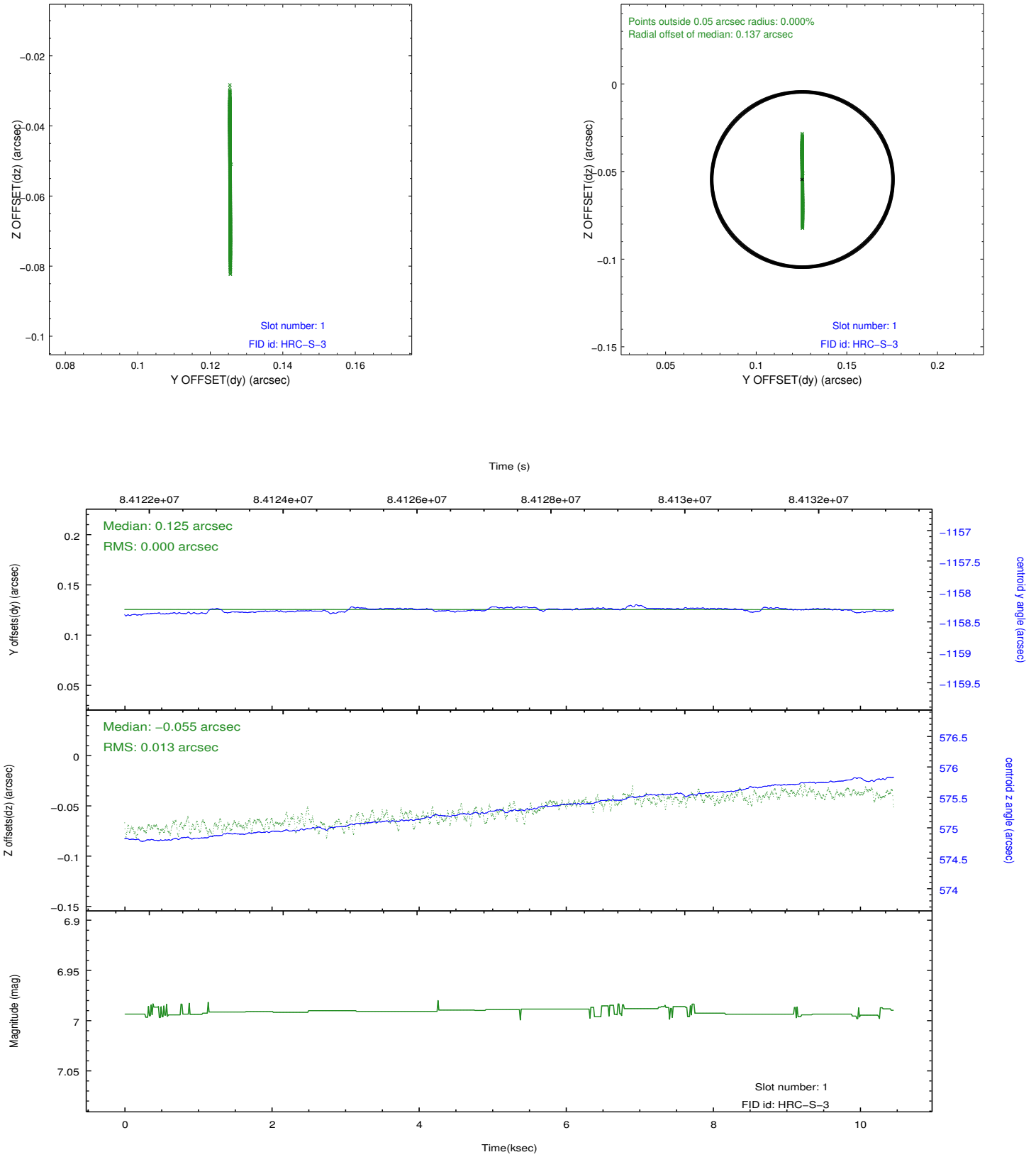


2.5 FID Slots

2.5.1 Slot 0



2.5.2 Slot 1



A Summary

A.1 Status

V&V Scientist	Jen Lauer
V&V Date (YYYY-MM-DD)	2012.09.12
V&V Edition	1
V&V Disposition and Status	OK
V&V Charge Time	10.12

A.2 Comments

Monitor constraint not met, data obtained outside of requested monitor window (follow obsid 146 by 100+/-15 days), actual ~180 days; for calibration --> deemed OK.

===

The fid light in slot 2 was not used in this observation.