

V&V Reference Report

L2 ASCDS Version : 8.4.5

Observation 141 - L2 Version 4
Chandra X-Ray Center

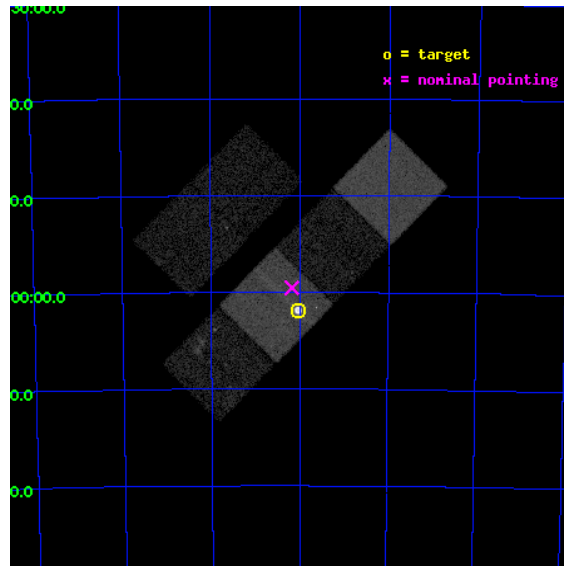
L2 Processing Date : Aug 28 2012

Contents

1	Front	2
2	OBI	3
2.1	OBI	3
2.1.1	Images	3
2.1.2	Bias	3
2.1.3	Parameters	4
2.1.4	Events	4
2.2	Compared Parameters	5
2.3	Aspect	6
2.4	Star Slots	9
2.4.1	Slot 3	9
2.4.2	Slot 4	10
2.4.3	Slot 5	11
2.4.4	Slot 6	12
2.4.5	Slot 7	13
2.5	FID Slots	14
2.5.1	Slot 0	14
2.5.2	Slot 1	15
2.5.3	Slot 2	16
A	Summary	17
A.1	Status	17
A.2	Comments	17

1 Front

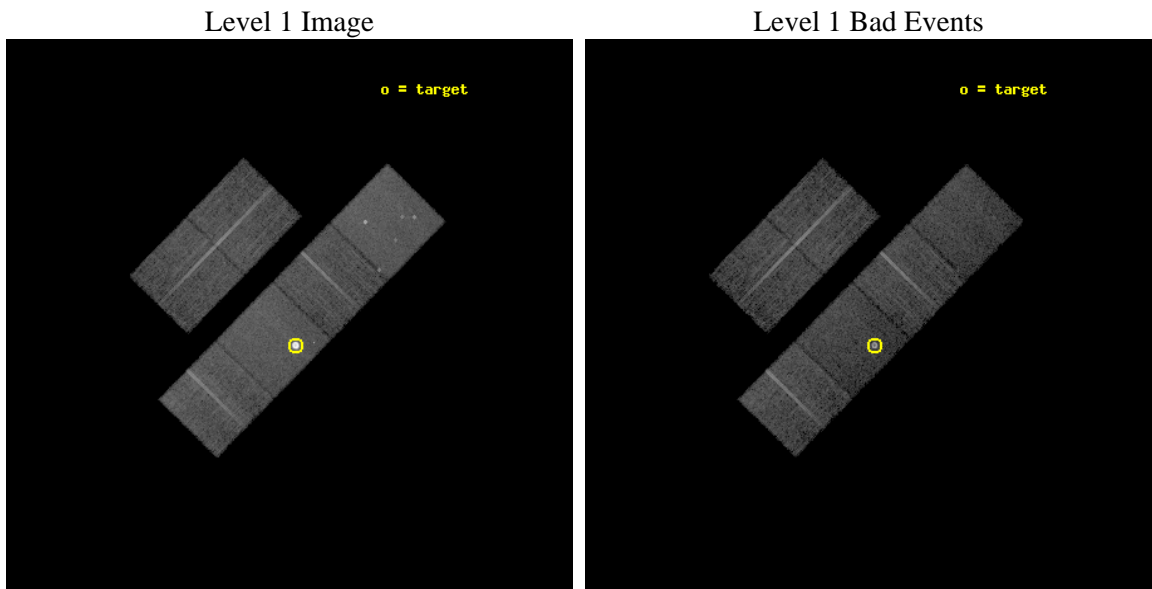
seq_num	590009	Sequence number
obs_id	141	Observation id
title	ACIS CHIP RESPONSE TO LINES WITH E=0.6-1.5 KEV	Proposal title
observer	Dr. CXC Calibration	Principal investigator
object	E0102-72.3 [Chip S3, T=120, Offsets=-1,2,0]	Source name
dtcycle	0	
cycle	P	events from which exps? Prim/Second/Both
ra_targ	16.01	Observer's specified target RA [deg]
dec_targ	-72.032028	Observer's specified target Dec [deg]
ra_nom	16.044027401494	Nominal RA [deg]
dec_nom	-71.992503195007	Nominal Dec [deg]
roll_nom	134.38062906732	Nominal Roll [deg]
revision	4	Processing version of data
ontime	9833.0115648508	Sum of GTIs [s]
livetime	9708.5000516879	Livetime [s]
ontime2	9833.0526048541	Sum of GTIs [s]
ontime3	9832.8884448558	Sum of GTIs [s]
ontime5	9832.9705248475	Sum of GTIs [s]
ontime6	9832.9294848591	Sum of GTIs [s]
ontime7	9833.0115648508	Sum of GTIs [s]
ontime8	9832.8474048525	Sum of GTIs [s]
l2events	184416	Number of level 2 events



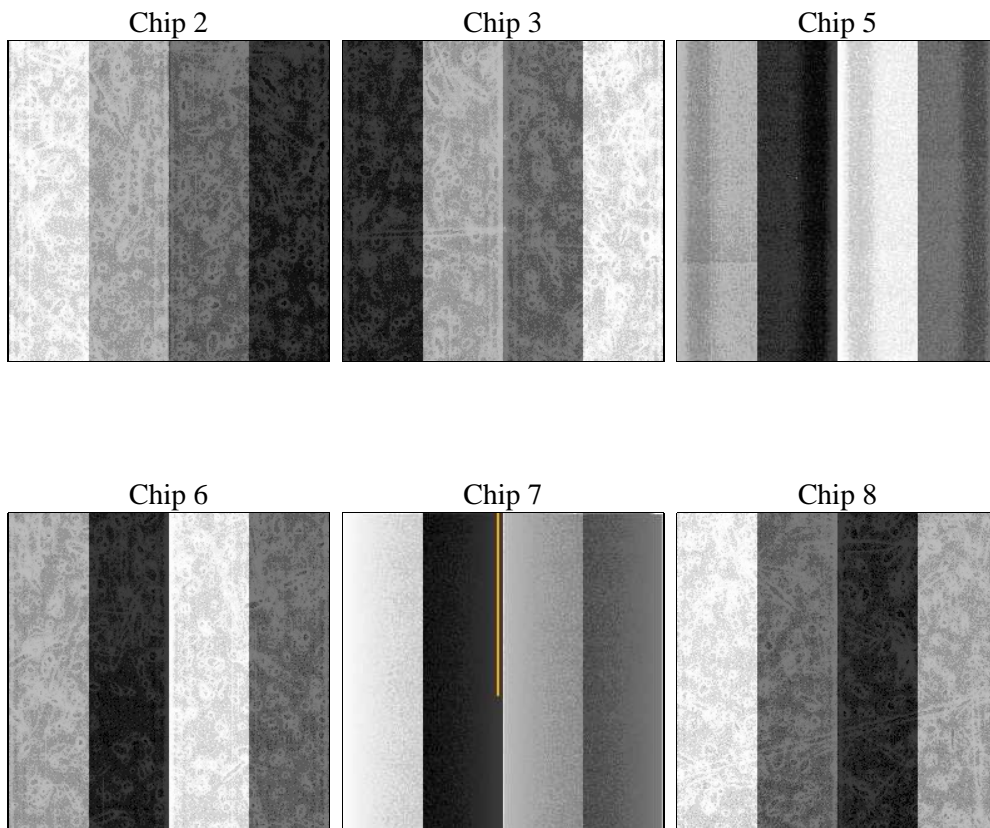
2 OBI

2.1 OBI

2.1.1 Images



2.1.2 Bias



2.1.3 Parameters

obi_num	0	Obi number	sched_exp_time	10000.000000	[s] Scheduled observation exposure time
ascdsver	8.4.5	Processing system revision	ontime	9833.0115648508	Sum of GTIs [s]
caldsver	4.5.1.1	 	ontime2	9833.0526048541	Sum of GTIs [s]
date	2012-08-28T05:07:34	Date and time of file creation	ontime3	9832.8884448558	Sum of GTIs [s]
revision	4	Processing version of data	ontime5	9832.9705248475	Sum of GTIs [s]
			ontime6	9832.9294848591	Sum of GTIs [s]
			ontime7	9833.0115648508	Sum of GTIs [s]
			ontime8	9832.8474048525	Sum of GTIs [s]
			l1events	539699	Number of level 1 events

2.1.4 Events

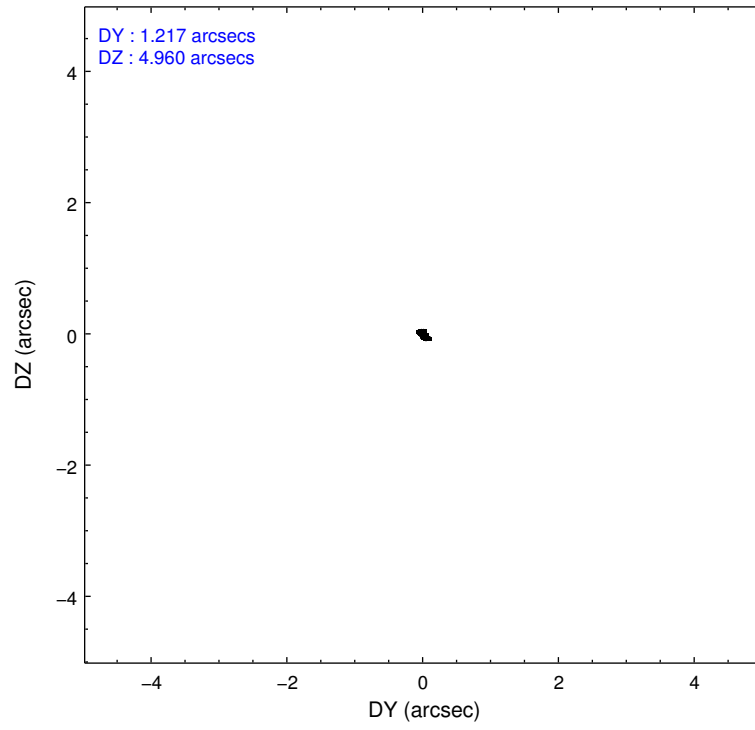
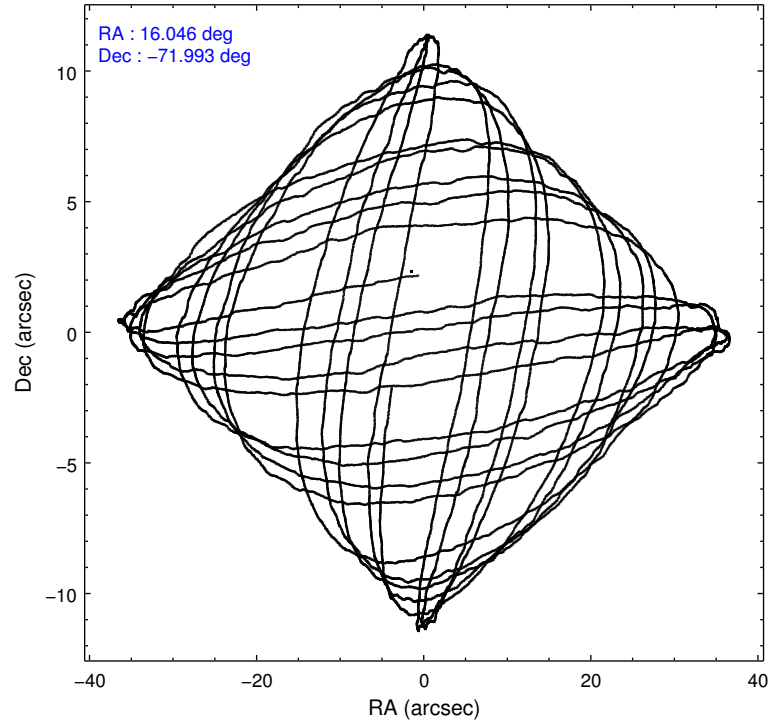
	ccd 2	ccd 3	ccd 5	ccd 6	ccd 7	ccd 8		ccd 2	ccd 3	ccd 5	ccd 6	ccd 7	ccd 8
level 1 events	68210	64604	87534	67181	169912	82258	grade 0 events	2796	3010	6754	3296	34780	6128
rejected events	61498	57691	45905	59736	47632	65327		4%	4%	7%	4%	20%	7%
rejected %	90%	89%	52%	88%	28%	79%	grade 1 events	37	26	166	31	833	46
								0%	0%	0%	0%	0%	0%
							grade 2 events	1483	1318	11062	1344	30387	3395
								2%	2%	12%	2%	17%	4%
							grade 3 events	622	685	1909	694	14016	1843
								0%	1%	2%	1%	8%	2%
							grade 4 events	651	709	1740	744	13874	1623
								0%	1%	1%	1%	8%	1%
							grade 5 events	1996	2297	6461	2479	9128	3019
								2%	3%	7%	3%	5%	3%
							grade 6 events	1161	1196	20176	1369	29255	3954
								1%	1%	23%	2%	17%	4%
							grade 7 events	59464	55363	39266	57224	37639	62250
								87%	85%	44%	85%	22%	75%

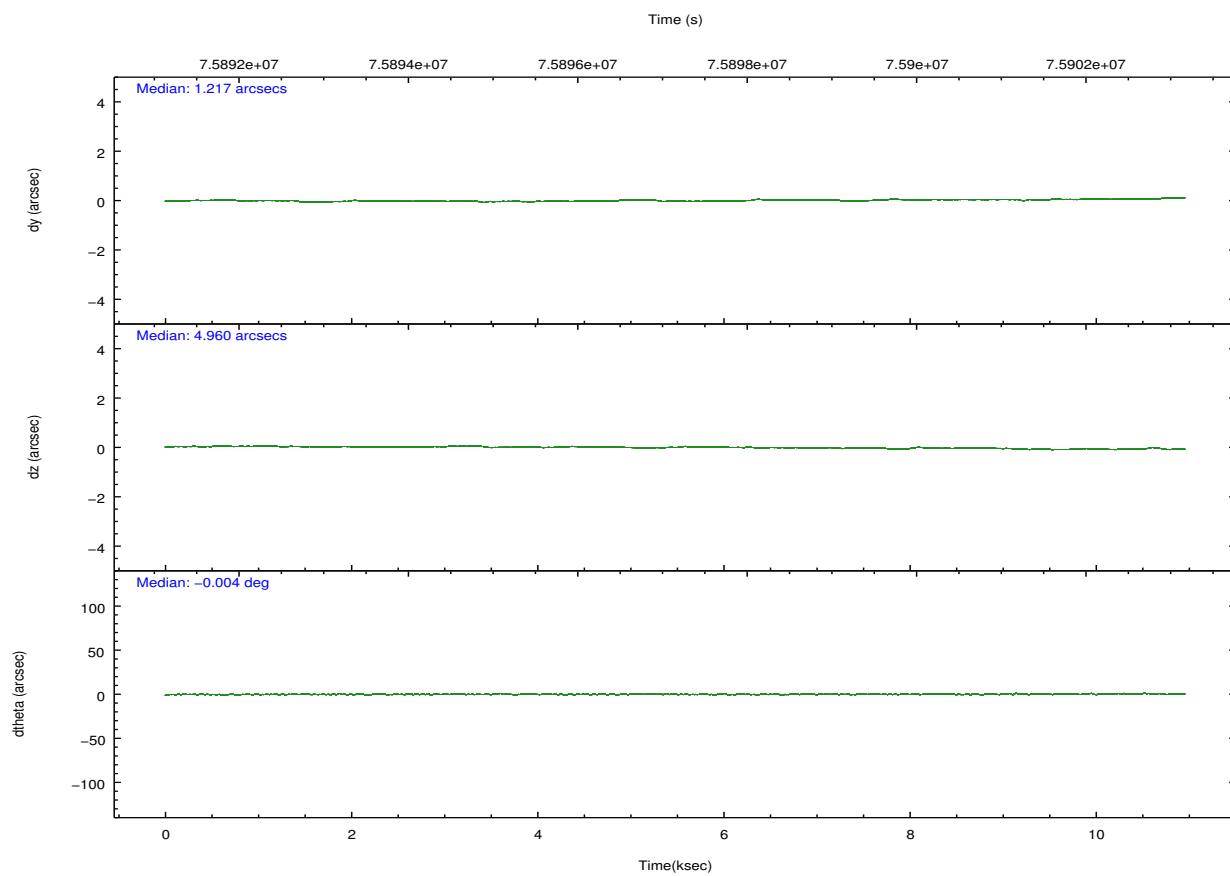
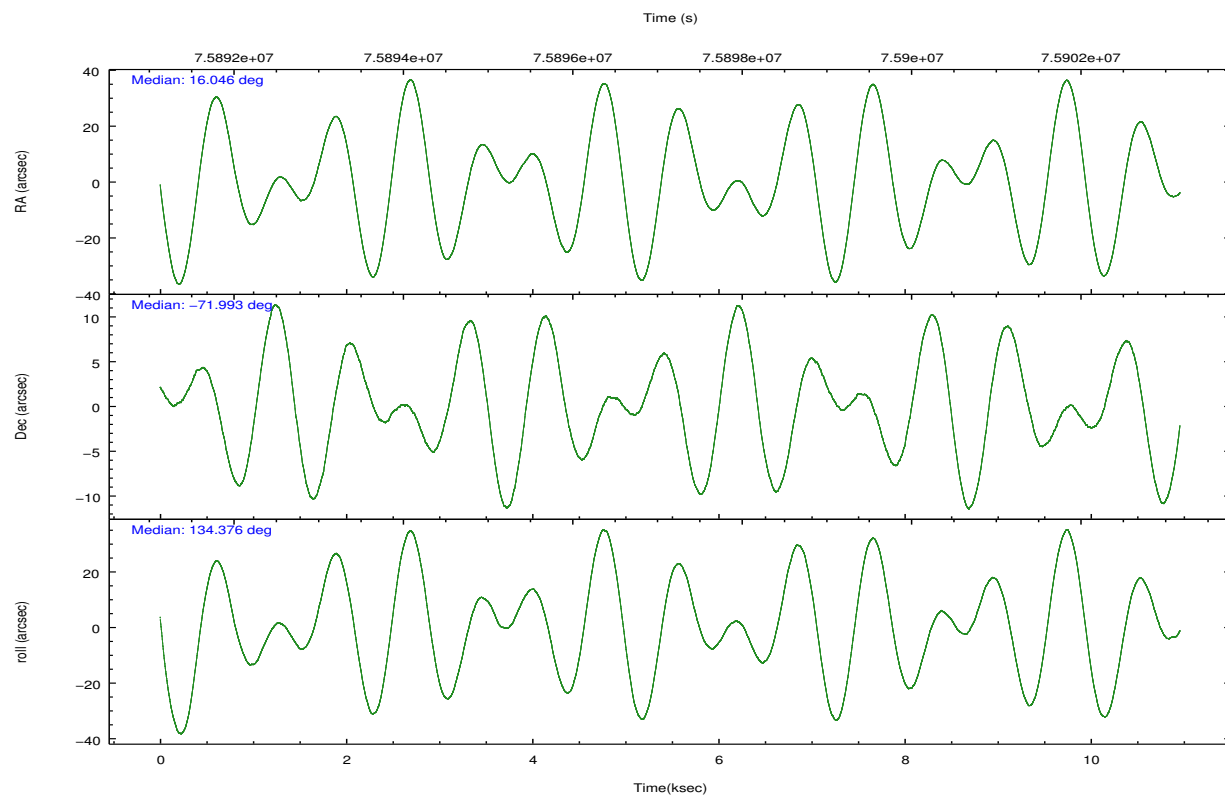
2.2 Compared Parameters

Parameter	Planned	Actual
Instrument	ACIS	ACIS
Detector	ACIS-235678	ACIS-235678
Grating	NONE	NONE
Data mode	FAINT	FAINT
Observation mode	POINTING	POINTING
[deg] Pointing RA	16.129704	16.04402740149419
[deg] Pointing Dec	-71.999738	-71.9925031950072
[deg] Pointing Roll	134.305485	134.3806290673225
[mm] SIM focus pos	-0.684267	-0.6828225247311905
[mm] SIM defocus	0	0.001444936568705701
[mm] SIM translation stage pos	-190.132523	-190.1400660498719
[mm] SIM translation stage offset	0	0.00754346686406393
[s] Observation start time (MET)	75892625.184000	75891283.42021701
Observation start date	2000-05-28T09:16:01	2000-05-28T08:54:43
[s] Observation end time (MET)	75902625.184000	75902759.32064
Observation end date	2000-05-28T12:02:41	2000-05-28T12:05:59
Read mode	TIMED	TIMED

Parameter	Planned	Actual
Obspar format version number	7	7
Obspar file type	PREDICTED	ACTUAL
Obspar update status	NONE	UPDATED
Number of optional ACIS chips dropped	0	0
On-chip summing requested	N	N
Subarray requested	NONE	NONE
Alternating exposures requested	N	N
[s] Primary exposure time	0.000000	3.2

2.3 Aspect



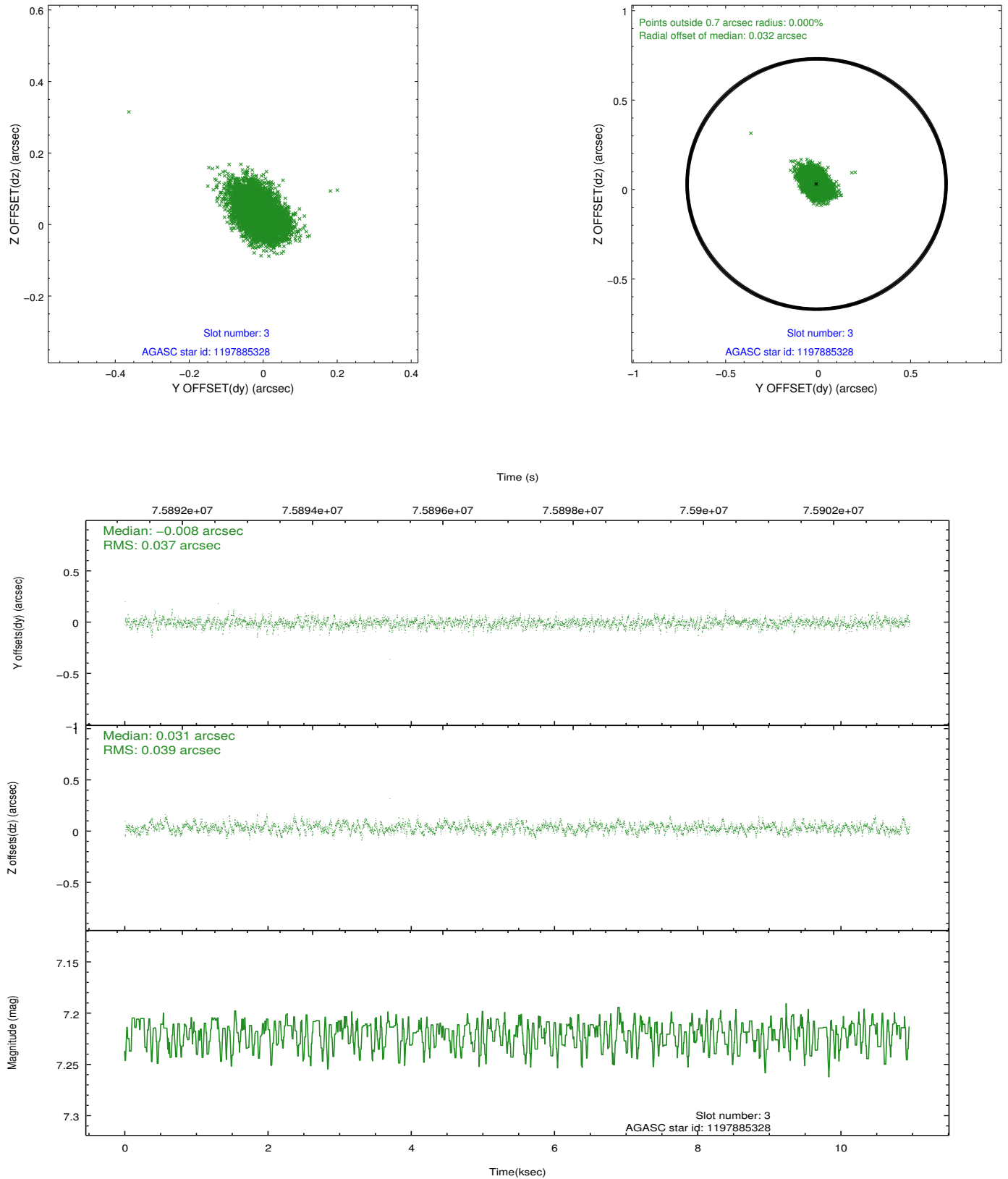


Slot Statistics

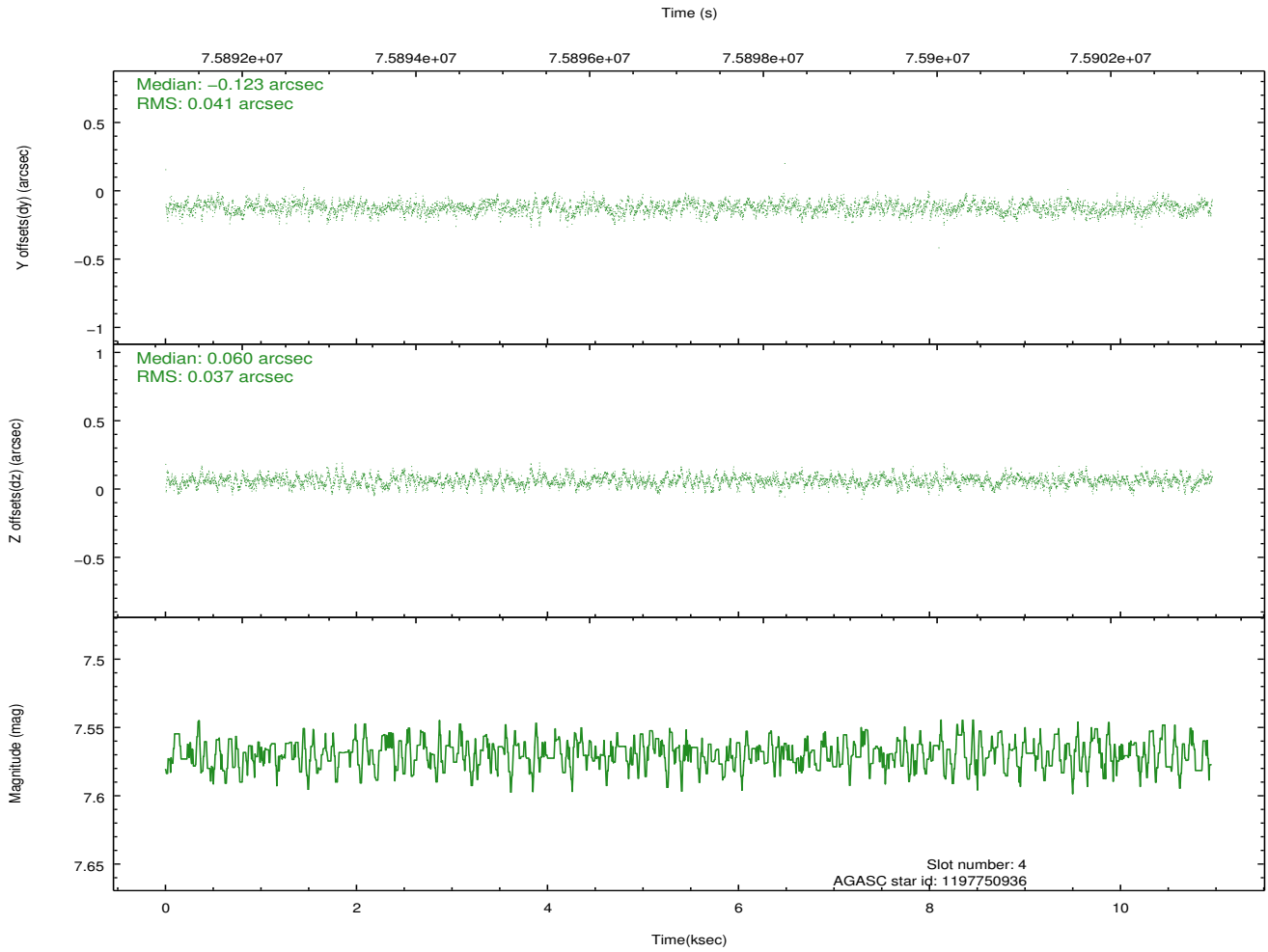
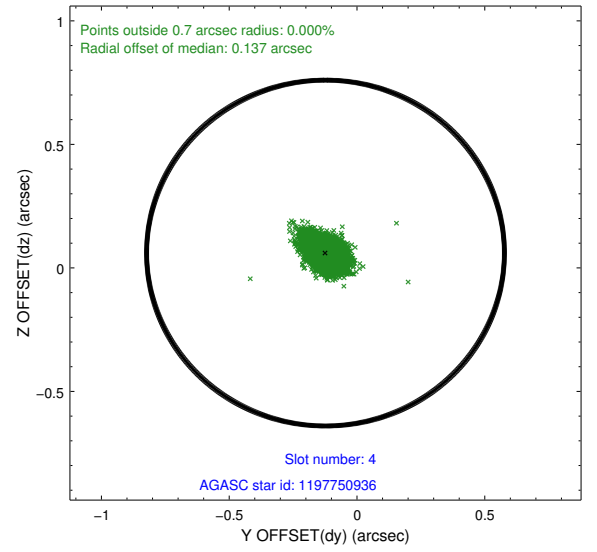
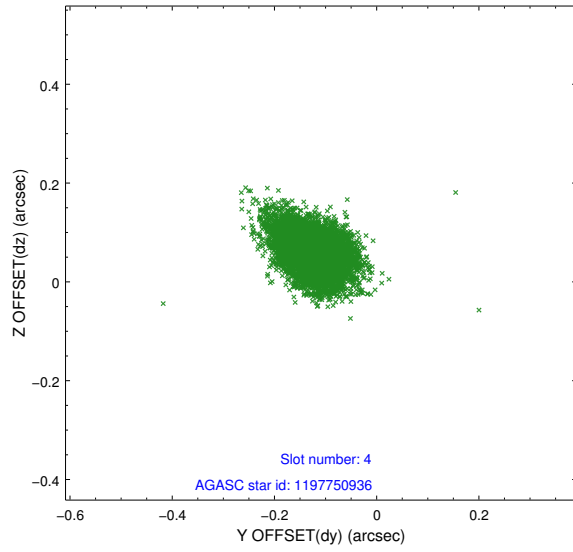
slot	status	id	mag	n_pts	med_dy	med_dz	dr1	dr2	ra	dec	mean_y	mean_z
0	FID	ACIS-S-2	7.11	2673	-0.034	-0.003	0.006	0.011	0.000000	0.000000	-753.85	-1726.07
1	FID	ACIS-S-4	7.21	2673	0.000	0.017	0.005	0.010	0.000000	0.000000	2159.25	181.95
2	FID	ACIS-S-5	7.23	2673	0.003	-0.006	0.006	0.011	0.000000	0.000000	-1806.05	176.13
3	GUIDE	1197885328	7.22	5346	-0.008	0.031	0.056	0.094	16.283090	-71.733943	565.03	-791.19
4	GUIDE	1197750936	7.57	5346	-0.123	0.060	0.058	0.095	15.387940	-71.549550	1747.66	-522.69
5	GUIDE	1197884536	8.50	5345	0.019	-0.010	0.066	0.107	17.160729	-71.835289	-389.88	-1233.96
6	GUIDE	1197884712	8.30	5343	0.008	-0.039	0.068	0.113	16.087398	-72.252690	-618.13	669.78
7	GUIDE	1197749664	9.57	5343	0.106	-0.042	0.089	0.143	15.809015	-72.366369	-699.80	1173.66

2.4 Star Slots

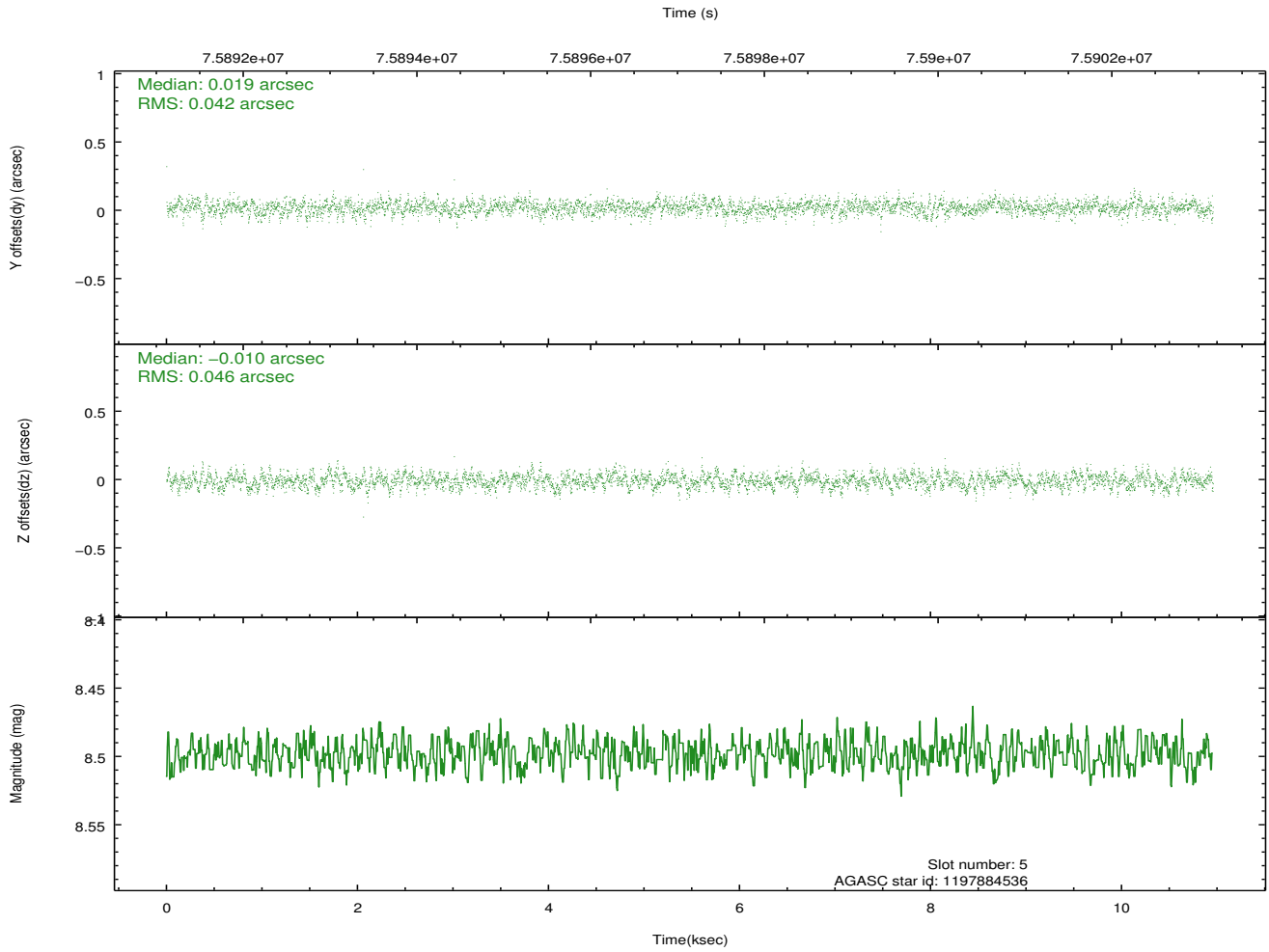
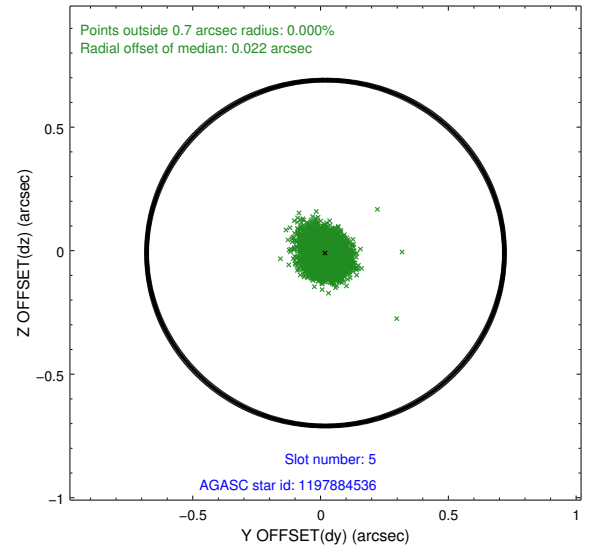
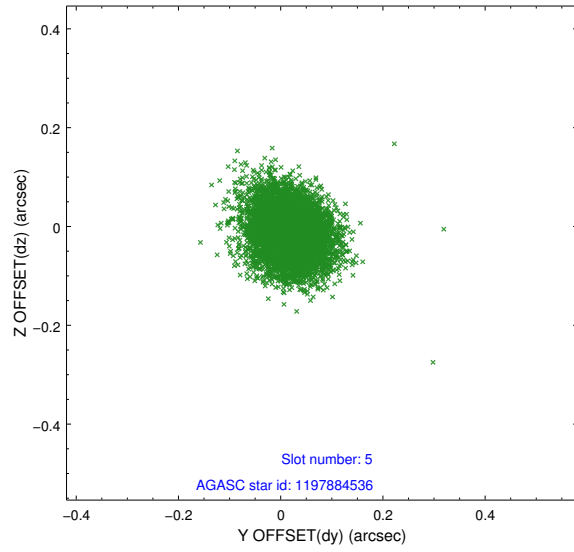
2.4.1 Slot 3



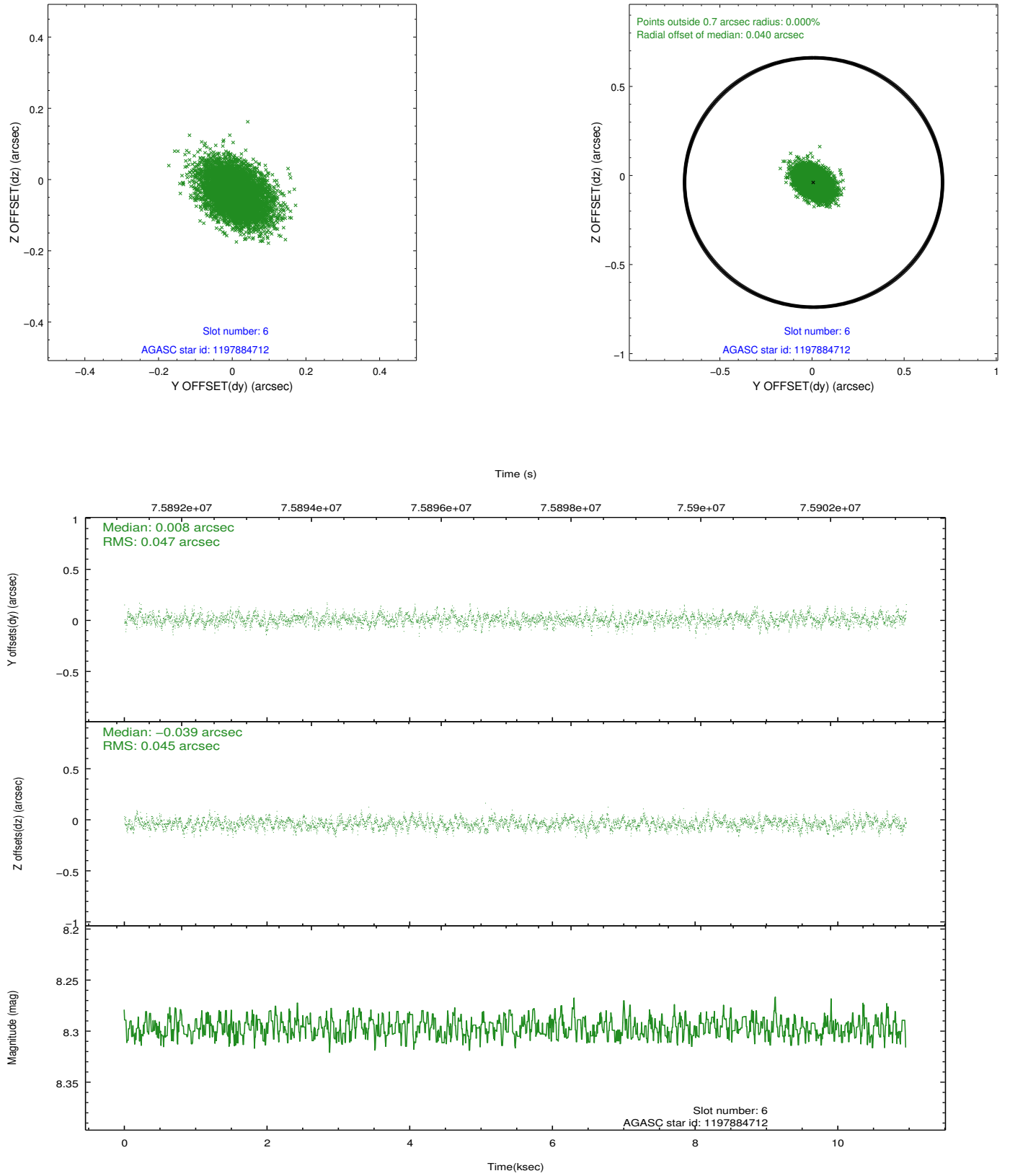
2.4.2 Slot 4



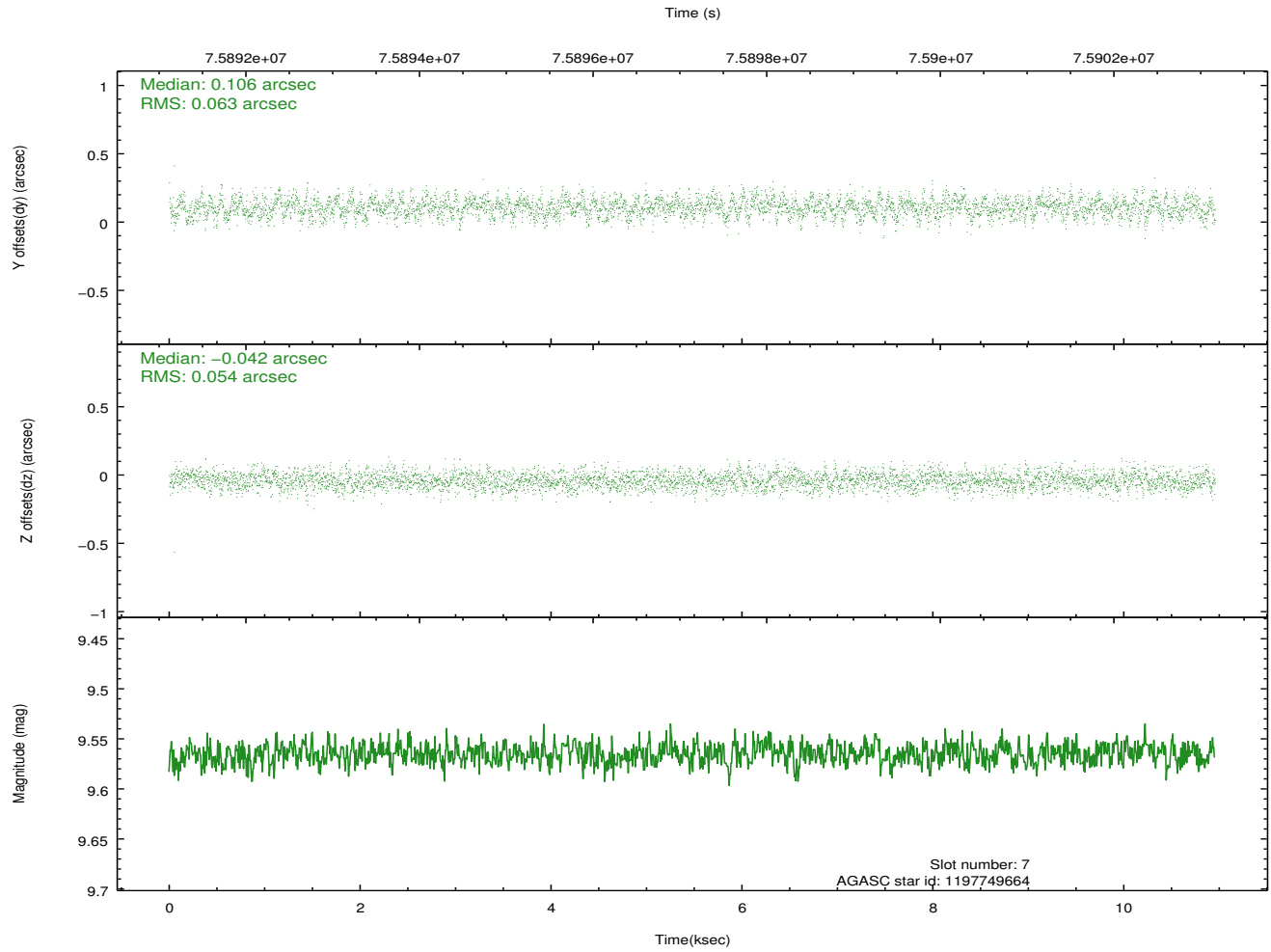
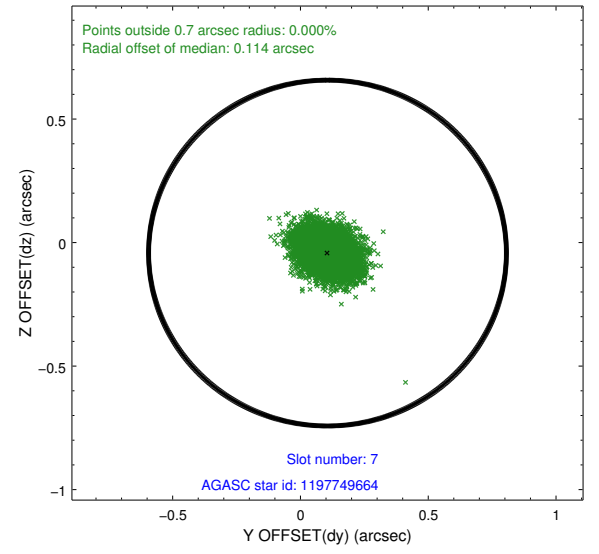
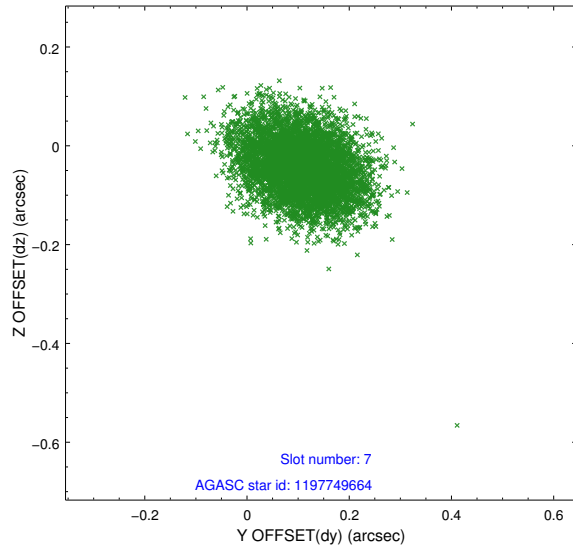
2.4.3 Slot 5



2.4.4 Slot 6

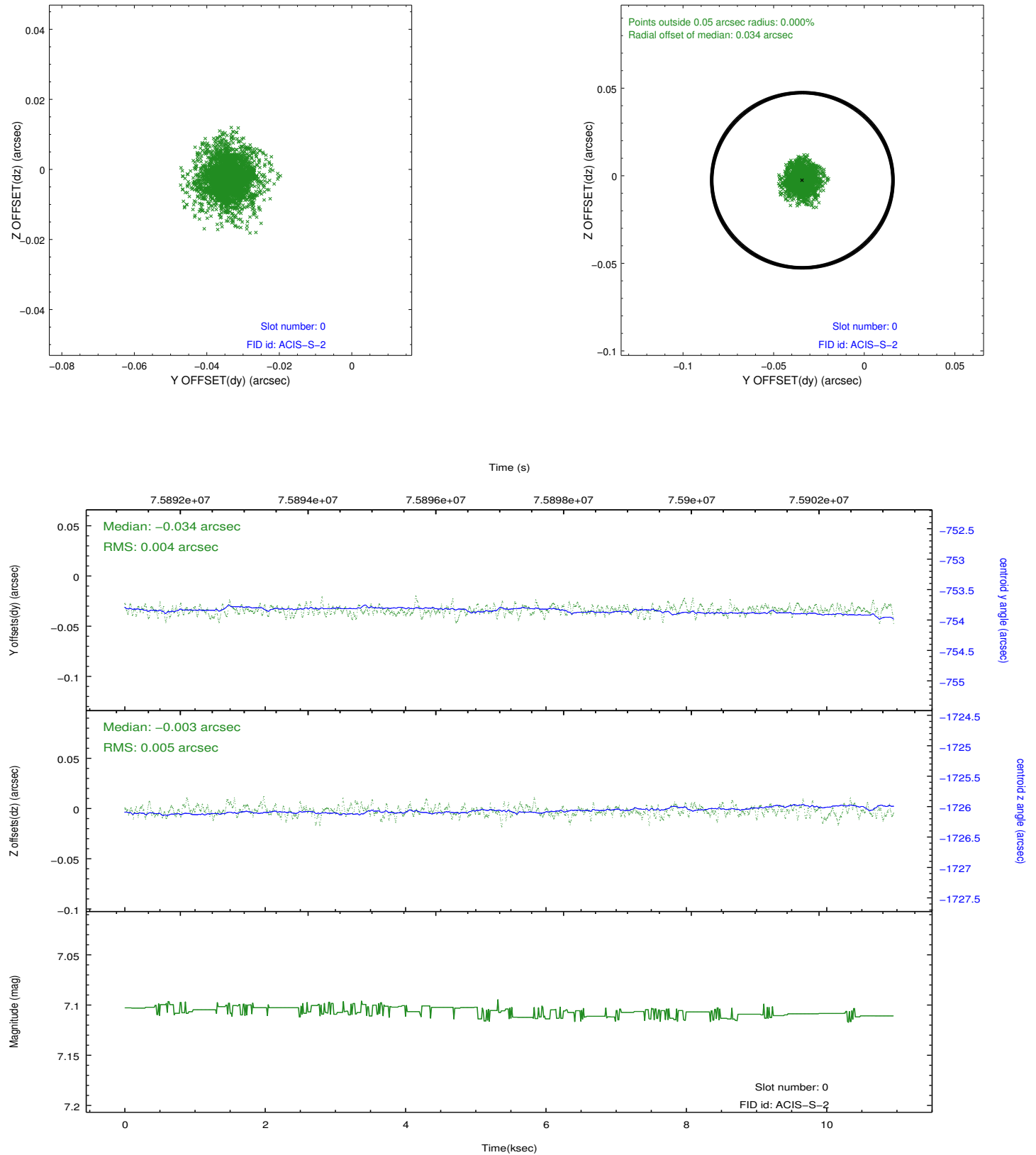


2.4.5 Slot 7

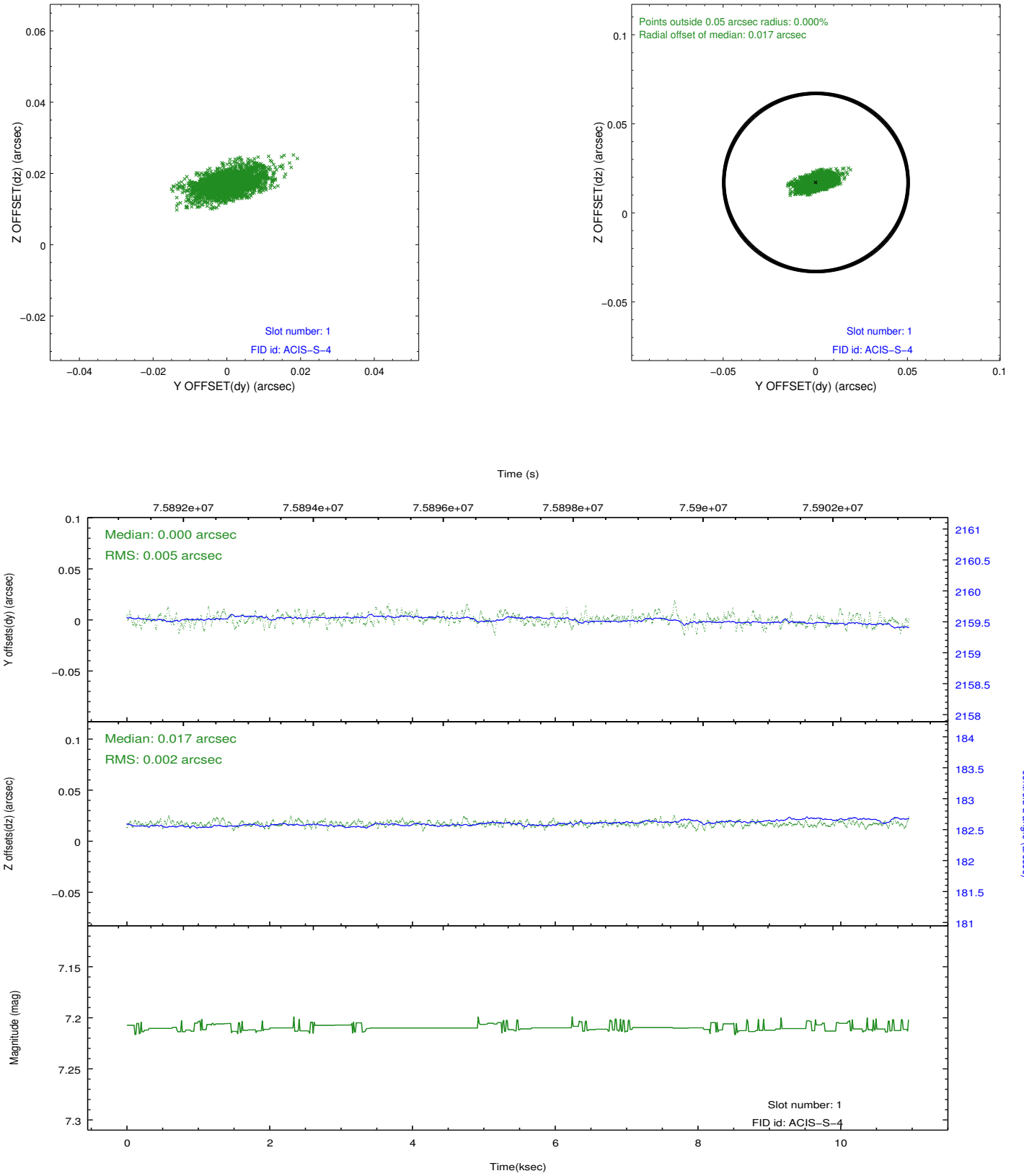


2.5 FID Slots

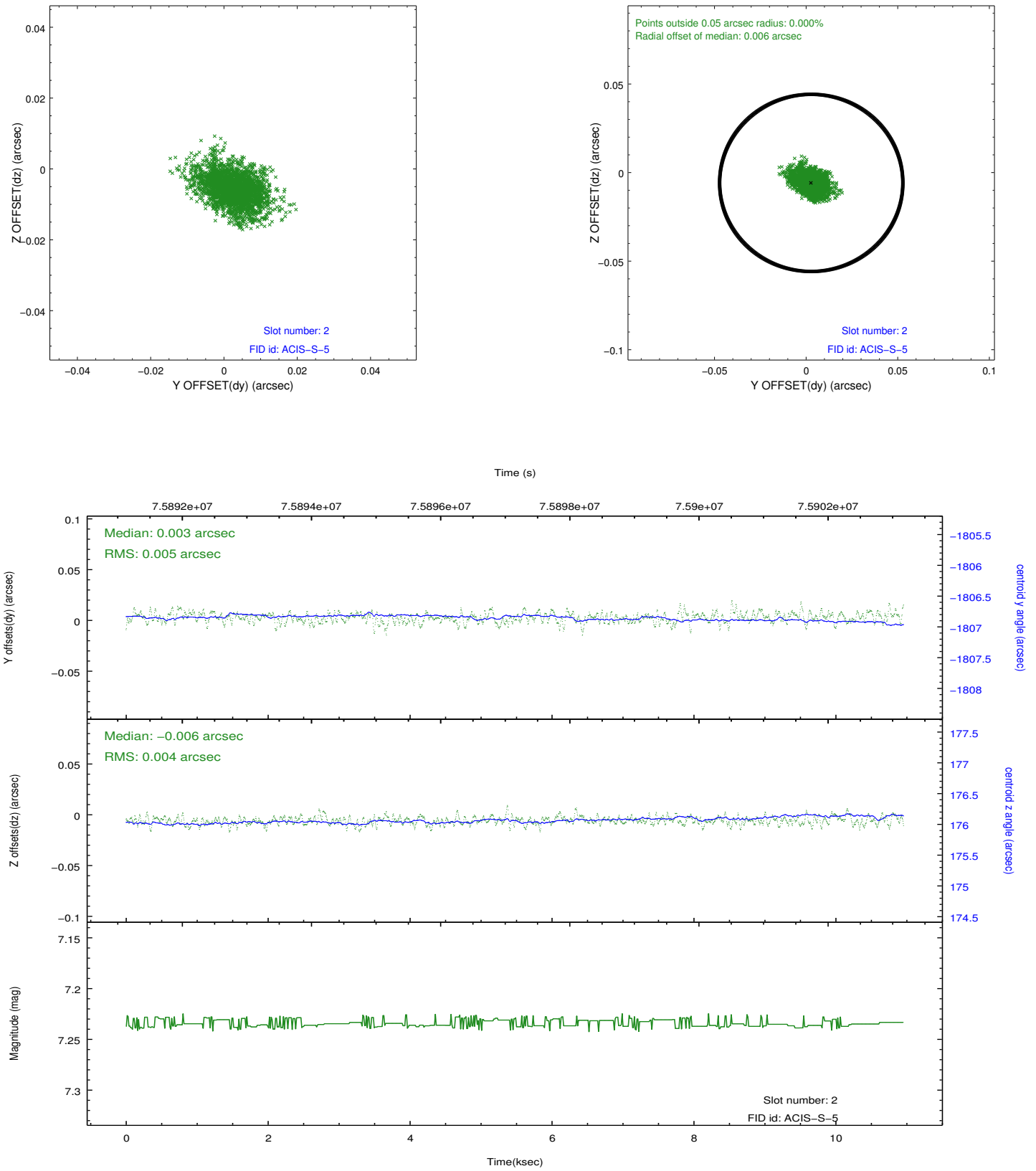
2.5.1 Slot 0



2.5.2 Slot 1



2.5.3 Slot 2



A Summary

A.1 Status

V&V Scientist	Jen Lauer
V&V Date (YYYY-MM-DD)	2012.08.30
V&V Edition	1
V&V Disposition and Status	OK
V&V Charge Time	9.833

A.2 Comments

Monitor constraint not met, but per the CDO was too tight.