

V&V Reference Report

L2 ASCDS Version : 8.1.2

Observation 1227 - L2 Version 4

Chandra X-Ray Center

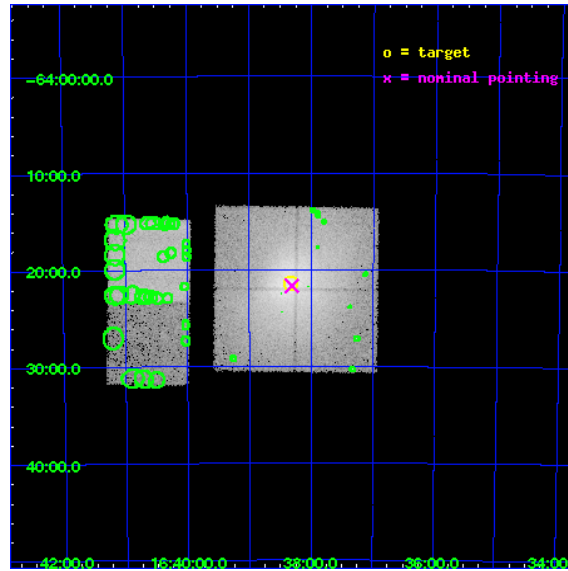
L2 Processing Date : Dec 17 2009

Contents

1	Front	2
2	OBI	3
2.1	OBI	3
2.1.1	Images	3
2.1.2	Bias	3
2.1.3	Parameters	4
2.1.4	Events	4
2.2	Compared Parameters	5
2.3	Aspect	6
2.4	Star Slots	9
2.4.1	Slot 3	9
2.4.2	Slot 4	10
2.4.3	Slot 5	11
2.4.4	Slot 6	12
2.4.5	Slot 7	13
2.5	FID Slots	14
2.5.1	Slot 0	14
2.5.2	Slot 1	15
2.5.3	Slot 2	16
3	Point Sources	17
A	Summary	18
A.1	Status	18
A.2	Comments	18

1 Front

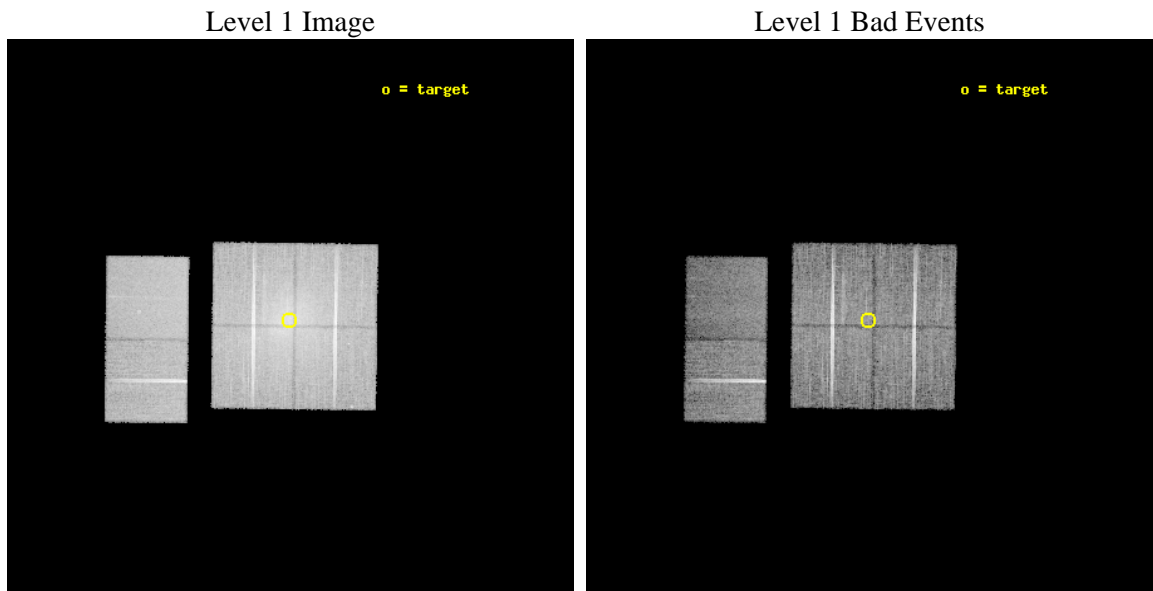
seq_num	880177	Sequence number
obs_id	1227	Observation id
title	 	Proposal title
observer	Dr. CXC Calibration	Principal investigator
object	Triang.Austr.	Source name
dtcycle	0	
cycle	P	events from which exps? Prim/Second/Both
ra_targ	249.583333	Observer's specified target RA
dec_targ	-64.356111	Observer's specified target Dec
ra_nom	249.57808450527	Nominal RA
dec_nom	-64.361285484049	Nominal Dec
roll_nom	270.72785803312	Nominal Roll
revision	4	Processing version of data
ontime	12256.000011414	Sum of GTIs [s]
livetime	12100.807159593	Livetime [s]
ontime0	12256.000011414	Sum of GTIs [s]
ontime1	12252.759051204	Sum of GTIs [s]
ontime2	12256.000011414	Sum of GTIs [s]
ontime3	12256.000011414	Sum of GTIs [s]
ontime6	12256.000011414	Sum of GTIs [s]
ontime7	12256.000011414	Sum of GTIs [s]
l2events	253013	Number of level 2 events



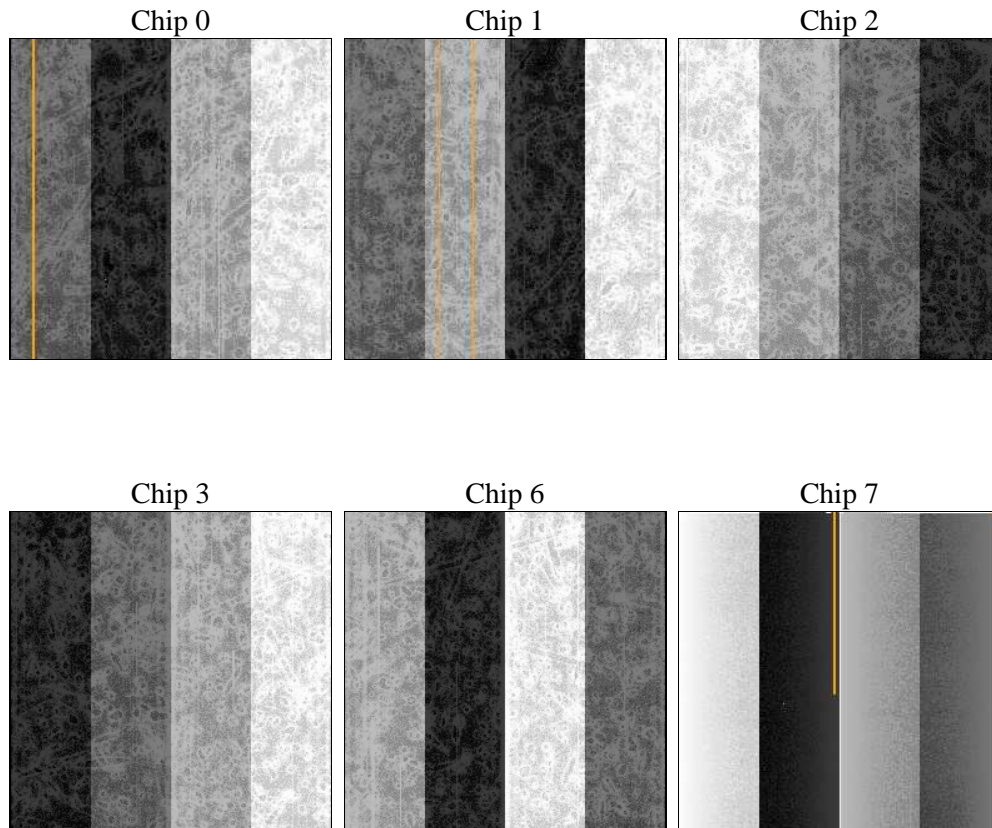
2 OBI

2.1 OBI

2.1.1 Images



2.1.2 Bias



2.1.3 Parameters

obi_num	2	Obi number	sched_exp_time	12500.000000	Scheduled observation exposure time
ascdsver	8.1.2	ASCDS version number	ontime	12256.000011414	Sum of GTIs [s]
caldsver	4.1.4	 	ontime0	12256.000011414	Sum of GTIs [s]
date	2009-12-17T07:33:00	Date and time of file creation	ontime1	12252.759051204	Sum of GTIs [s]
revision	3	Processing version of data	ontime2	12256.000011414	Sum of GTIs [s]
			ontime3	12256.000011414	Sum of GTIs [s]
			ontime6	12256.000011414	Sum of GTIs [s]
			ontime7	12256.000011414	Sum of GTIs [s]
			l1events	857009	Number of level 1 events

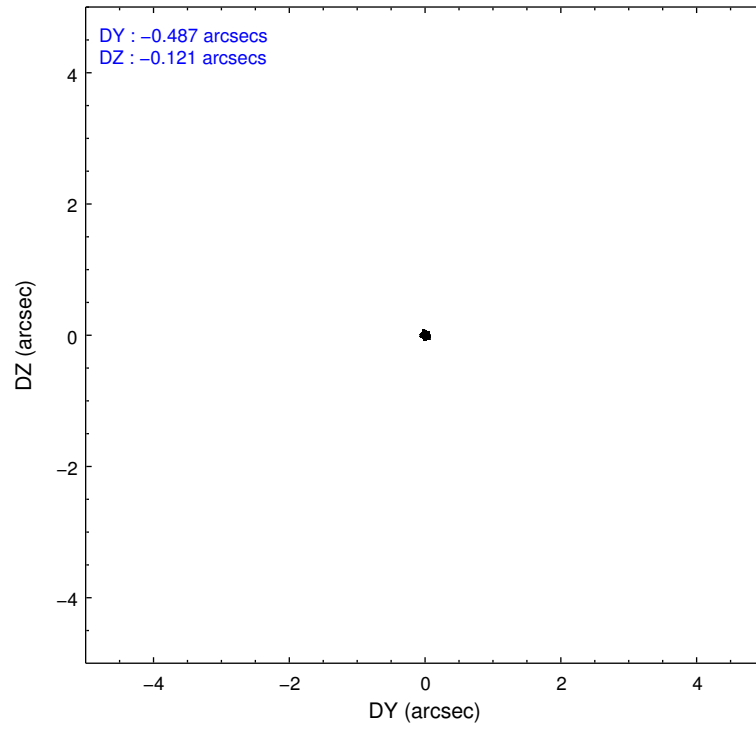
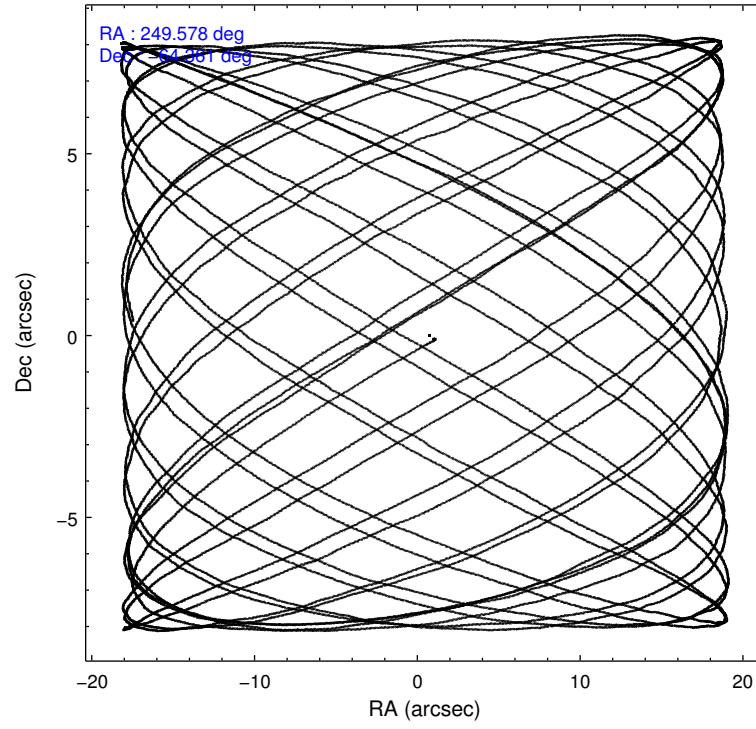
2.1.4 Events

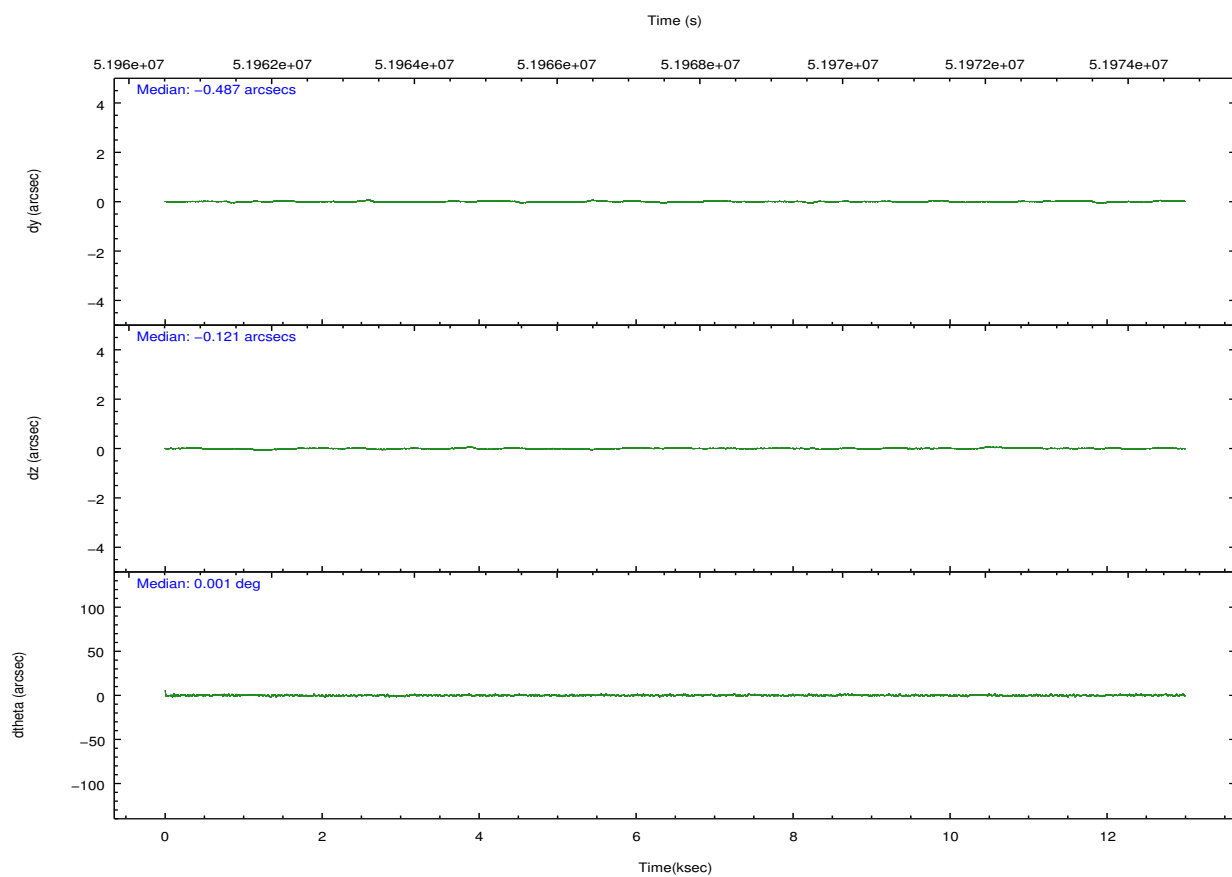
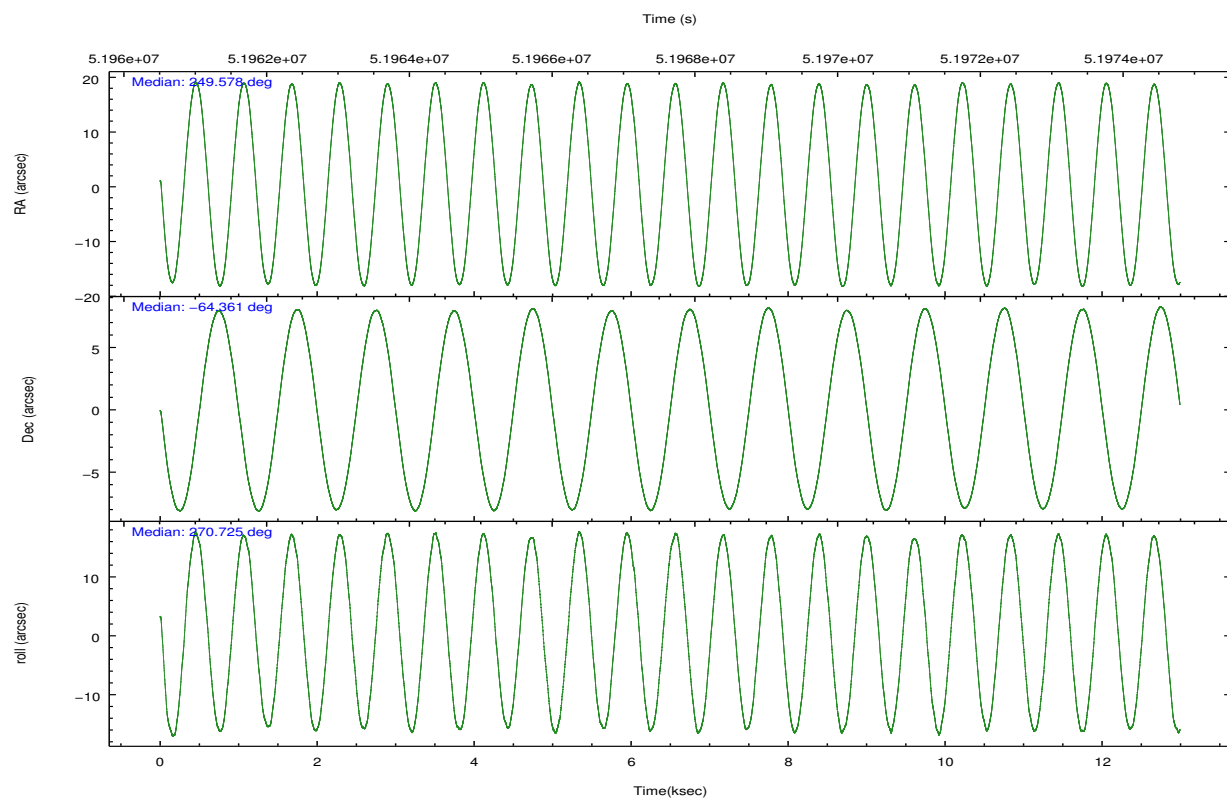
	ccd 0	ccd 1	ccd 2	ccd 3	ccd 6	ccd 7		ccd 0	ccd 1	ccd 2	ccd 3	ccd 6	ccd 7
level 1 events	139442	155908	155964	161302	115507	128886	grade 0 events	26123	38251	32931	36889	5421	4578
rejected events	100369	100711	108396	108706	102184	74775		18%	24%	21%	22%	4%	3%
rejected %	71%	64%	69%	67%	88%	58%	grade 1 events	132	194	160	174	36	73
								0%	0%	0%	0%	0%	0%
							grade 2 events	5774	7638	7007	7389	3306	8913
								4%	4%	4%	4%	2%	6%
							grade 3 events	2016	2784	2258	2417	1006	5391
								1%	1%	1%	1%	0%	4%
							grade 4 events	1986	2732	2169	2437	1067	4417
								1%	1%	1%	1%	0%	3%
							grade 5 events	2901	3202	2661	3000	2989	8182
								2%	2%	1%	1%	2%	6%
							grade 6 events	3184	3800	3217	3478	2530	30829
								2%	2%	2%	2%	2%	23%
							grade 7 events	97326	97307	105561	105518	99152	66503
								69%	62%	67%	65%	85%	51%

2.2 Compared Parameters

Parameter	Planned	Actual	Parameter	Planned	Actual
Instrument	ACIS	ACIS	Obspar format version number	6	6
Detector	ACIS-012367	ACIS-012367	Obspar file type	PREDICTED	ACTUAL
Grating	NONE	NONE	Obspar update status	NONE	UPDATED
Data mode	FAINT	FAINT	Number of optional ACIS chips dropped	0	0
Observation mode	POINTING	POINTING	On-chip summing requested	N	N
Pointing RA	249.546757	249.5780845052689	Subarray requested	NONE	NONE
Pointing Dec	-64.336907	-64.36128548404889	Alternating exposures requested	N	N
Pointing Roll	270.490929	270.7278580331198	Primary exposure time	0.000000	3.2
SIM focus pos (mm)	-0.782348	-0.7362356599963374			
SIM defocus (mm)	0	0.04611255558364913			
SIM translation stage pos (mm)	-233.592463	-233.5874344608287			
SIM translation stage offset (mm)	0	-0.005018542100998502			
Observation start time	51961648.184000	51960974.44183			
Observation start date	1999-08-25T09:46:24	1999-08-25T09:36:14			
Observation end time	51974148.184000	51974903.167331			
Observation end date	1999-08-25T13:14:44	1999-08-25T13:28:23			
Read mode	TIMED	TIMED			

2.3 Aspect



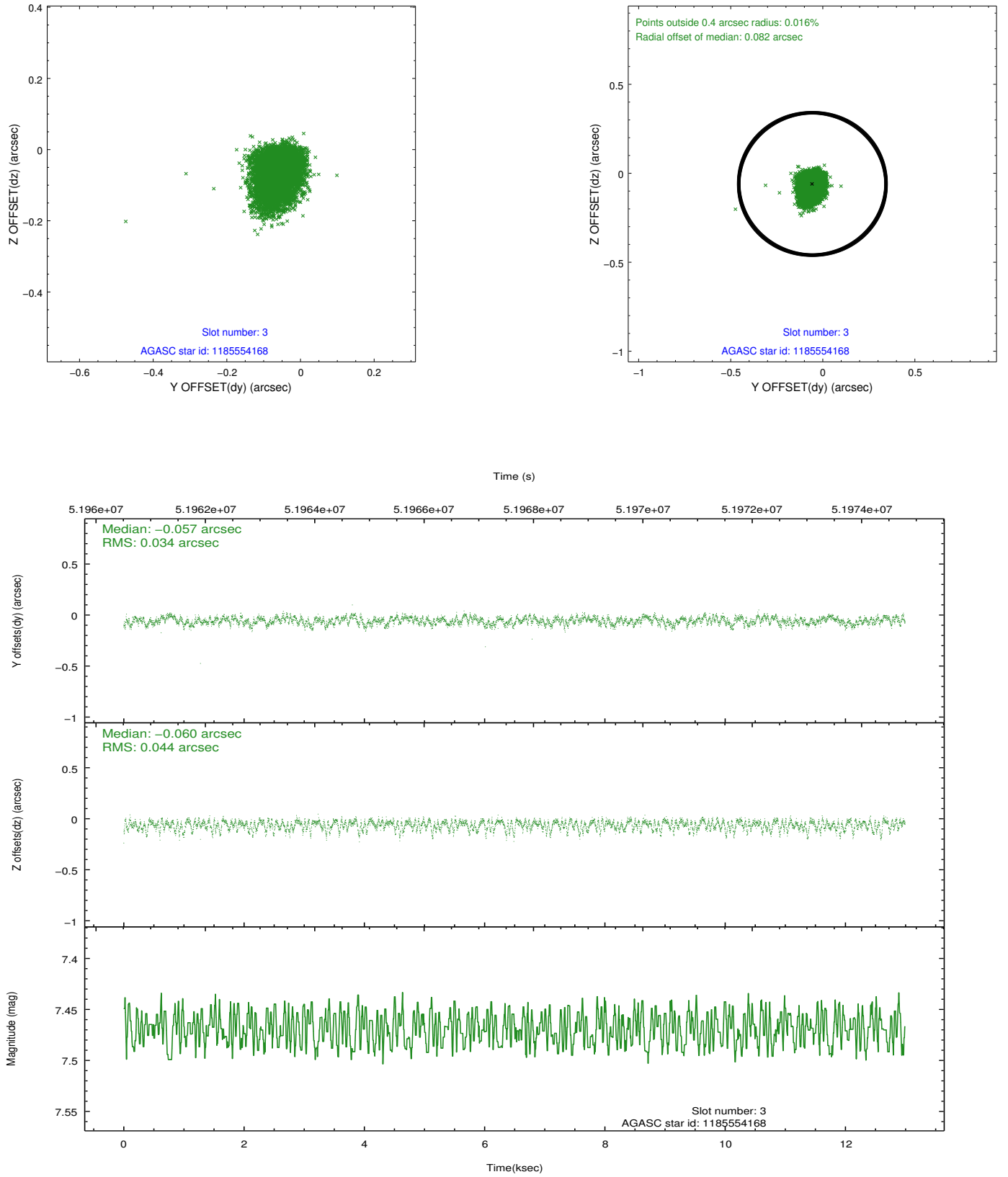


Slot Statistics

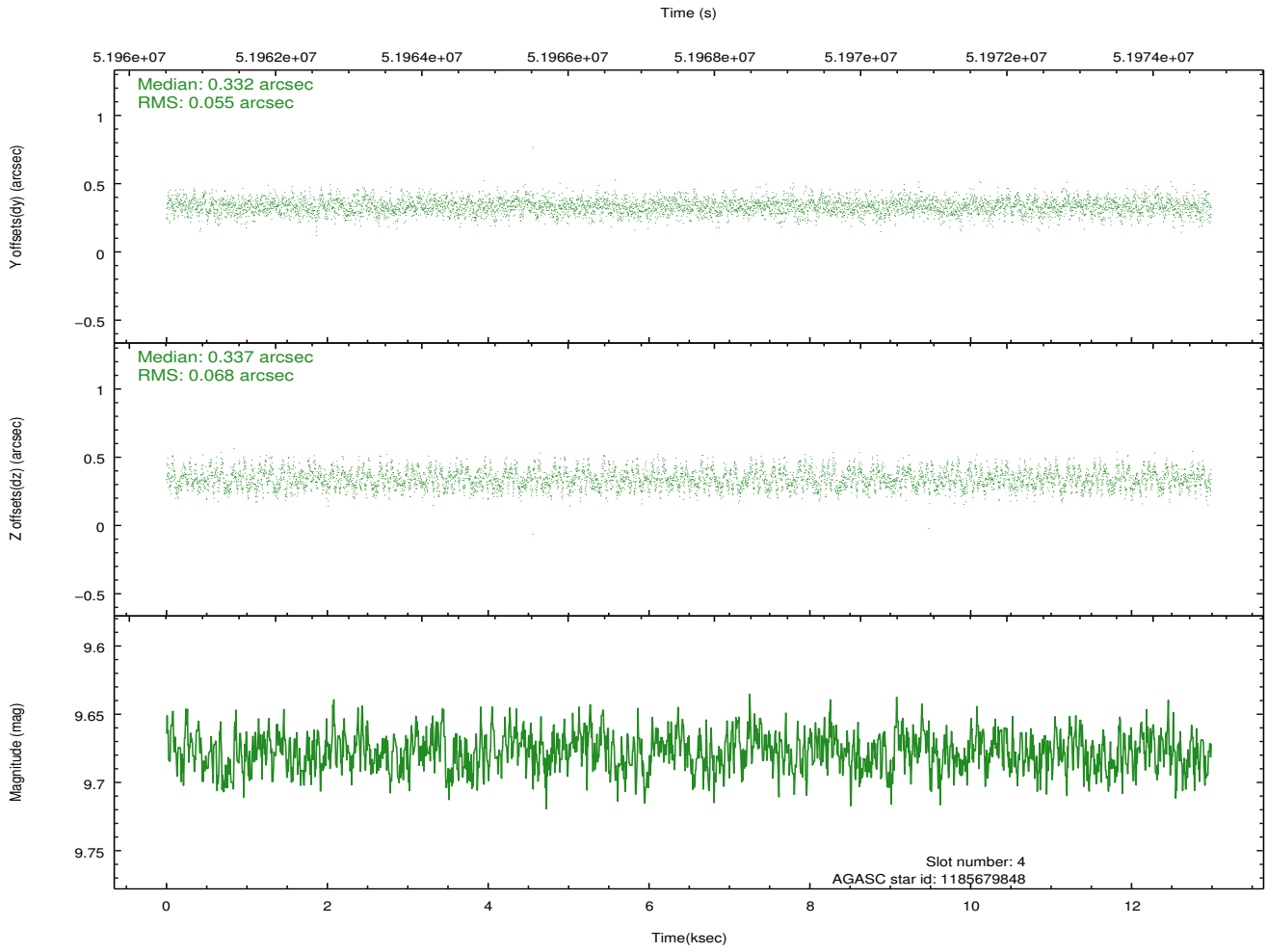
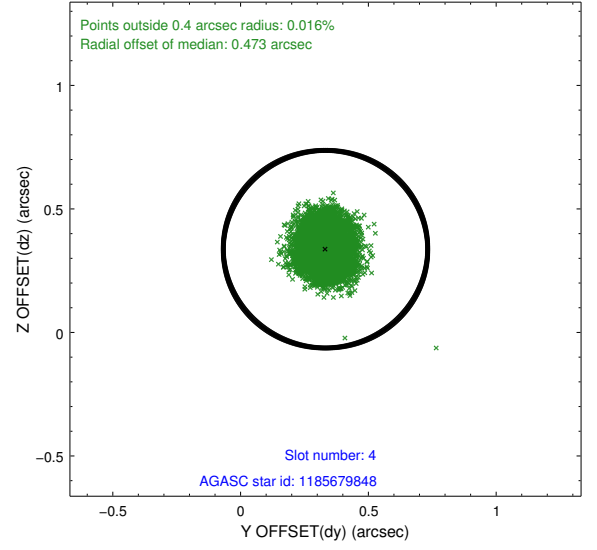
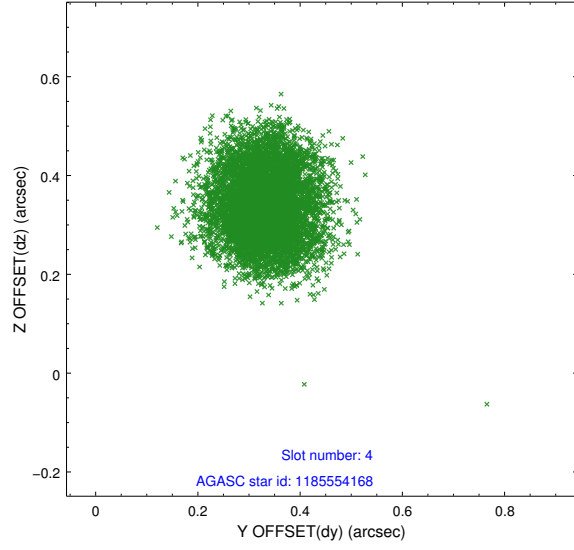
slot	status	id	mag	n_pts	med_dy	med_dz	dr1	dr2	ra	dec	mean_y	mean_z
0	FID	ACIS-I-2	7.21	6336	-0.032	0.057	0.009	0.015	0.000000	0.000000	-753.88	-829.35
1	FID	ACIS-I-4	7.24	6339	0.139	0.012	0.006	0.011	0.000000	0.000000	2160.42	1076.58
2	FID	ACIS-I-5	7.23	6338	-0.208	0.000	0.008	0.013	0.000000	0.000000	-1807.64	1074.75
3	GUIDE	1185554168	7.47	6338	-0.057	-0.060	0.057	0.097	248.273316	-63.842249	-1777.83	-2005.22
4	GUIDE	1185679848	9.68	6335	0.332	0.337	0.094	0.147	249.815537	-64.925183	2122.19	392.59
5	GUIDE	1185690296	8.30	6337	-0.211	0.141	0.062	0.098	250.876096	-63.982213	-1236.89	2110.47
6	GUIDE	1185681360	9.57	6330	-0.038	-0.044	0.076	0.123	248.781751	-63.785496	-1988.26	-1198.83
7	BAD	1185681736	7.95	3961	-0.046	-0.591	0.042	0.070	249.919561	-65.018920	2461.15	546.55

2.4 Star Slots

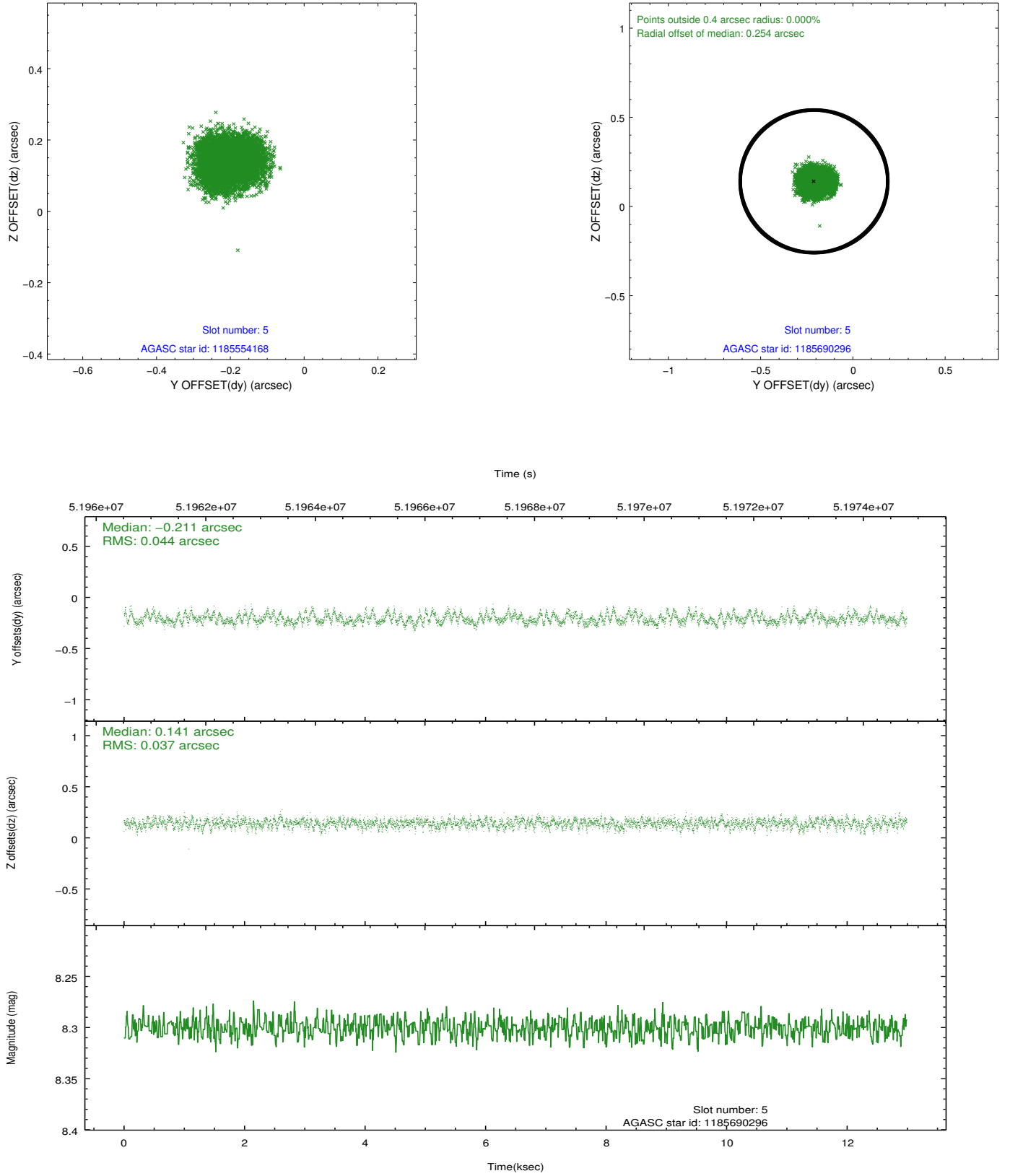
2.4.1 Slot 3



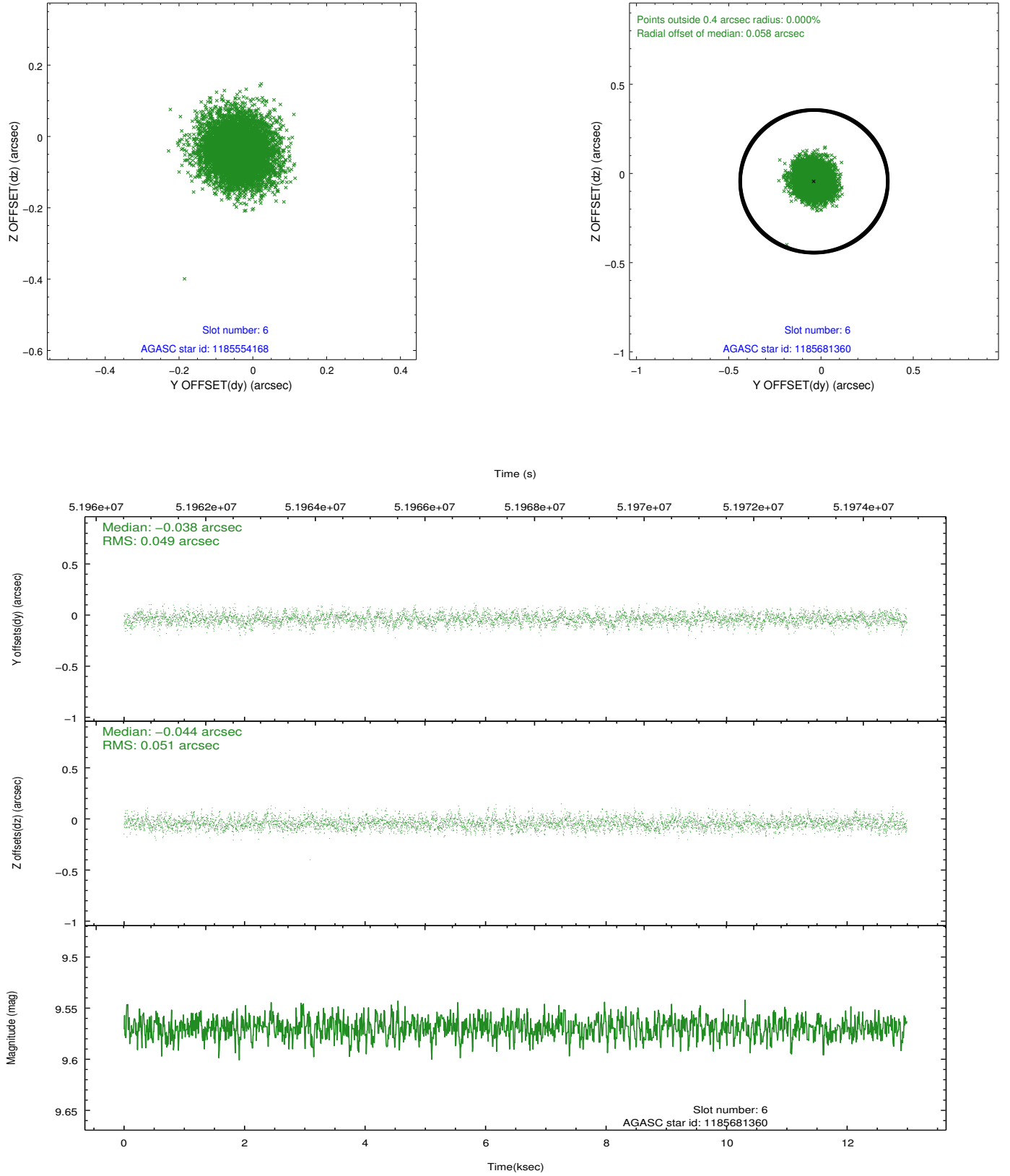
2.4.2 Slot 4



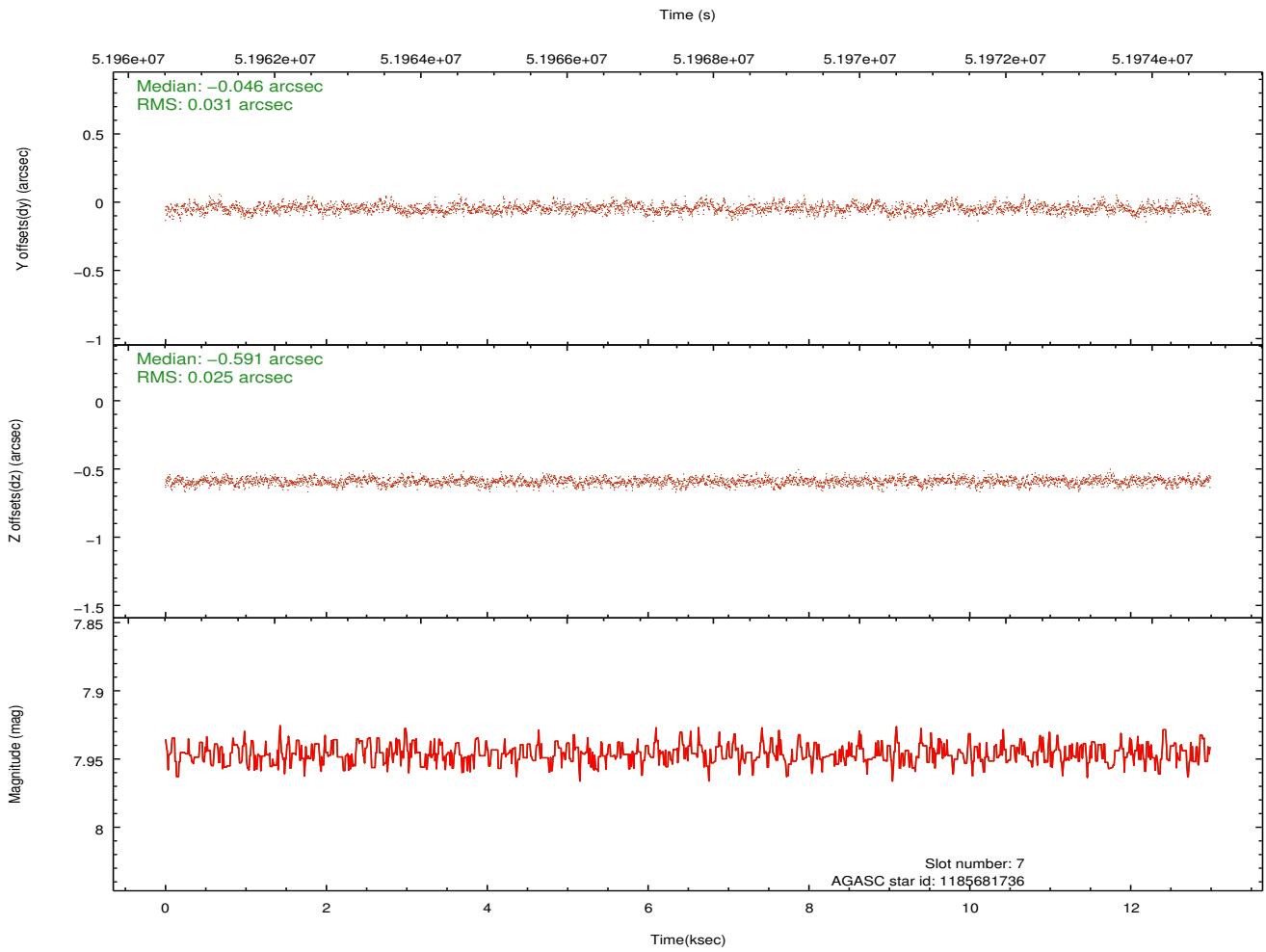
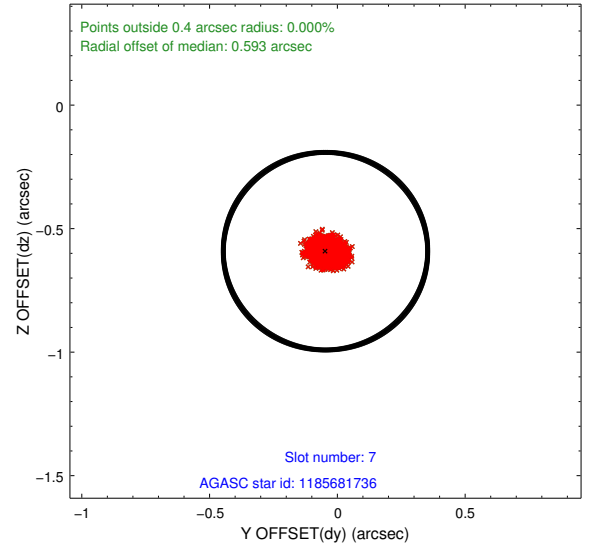
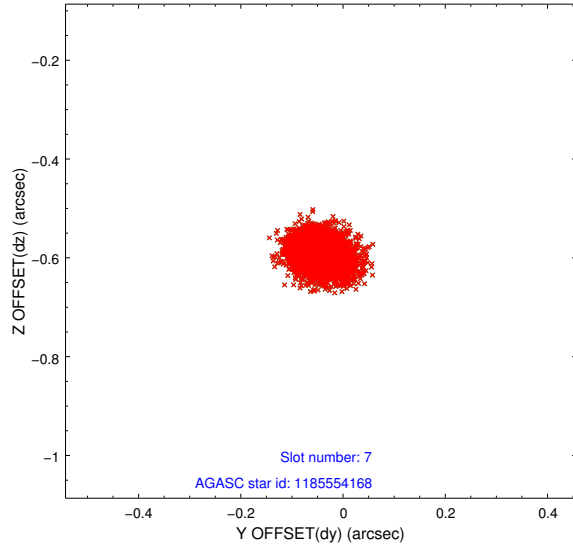
2.4.3 Slot 5



2.4.4 Slot 6

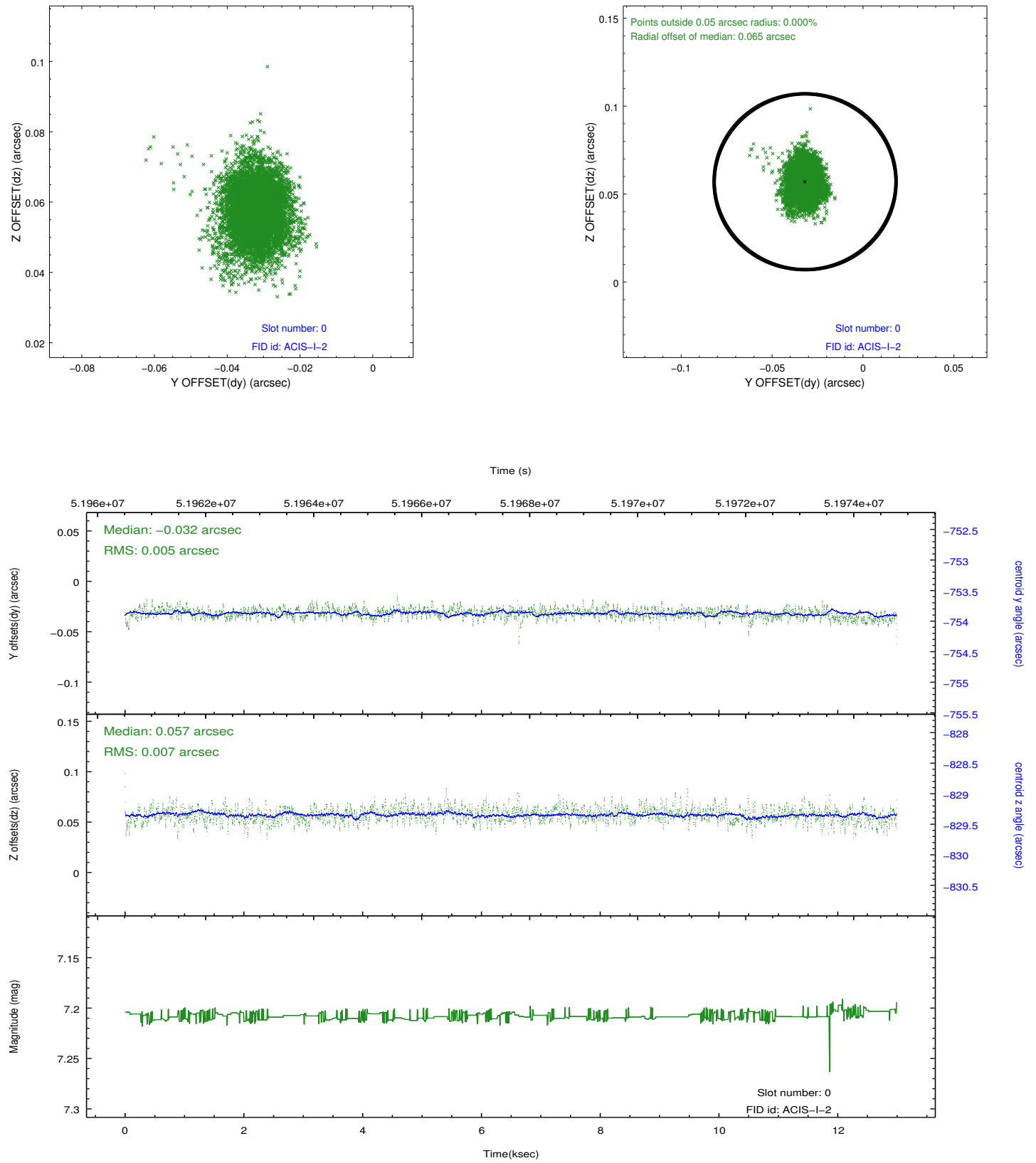


2.4.5 Slot 7

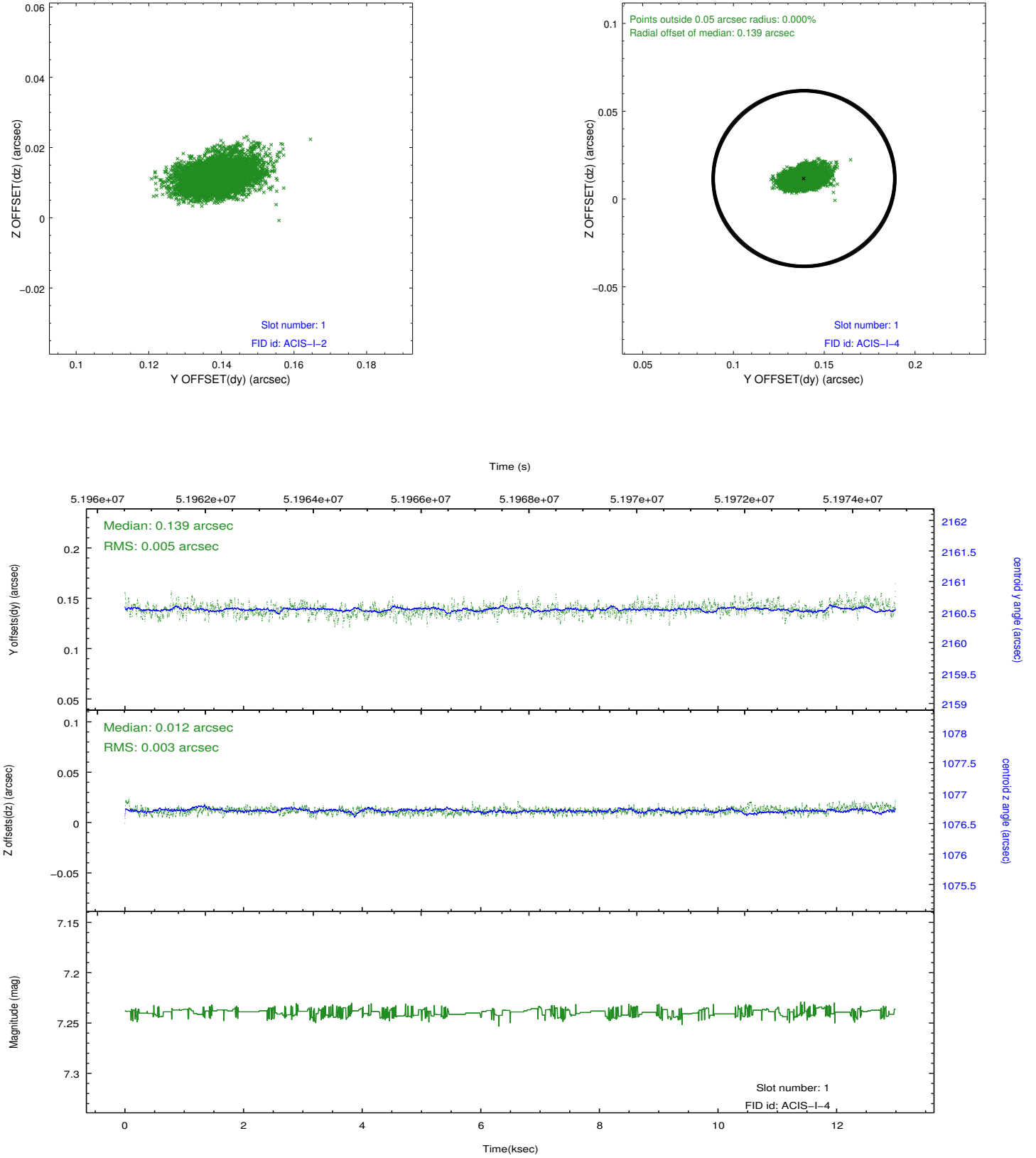


2.5 FID Slots

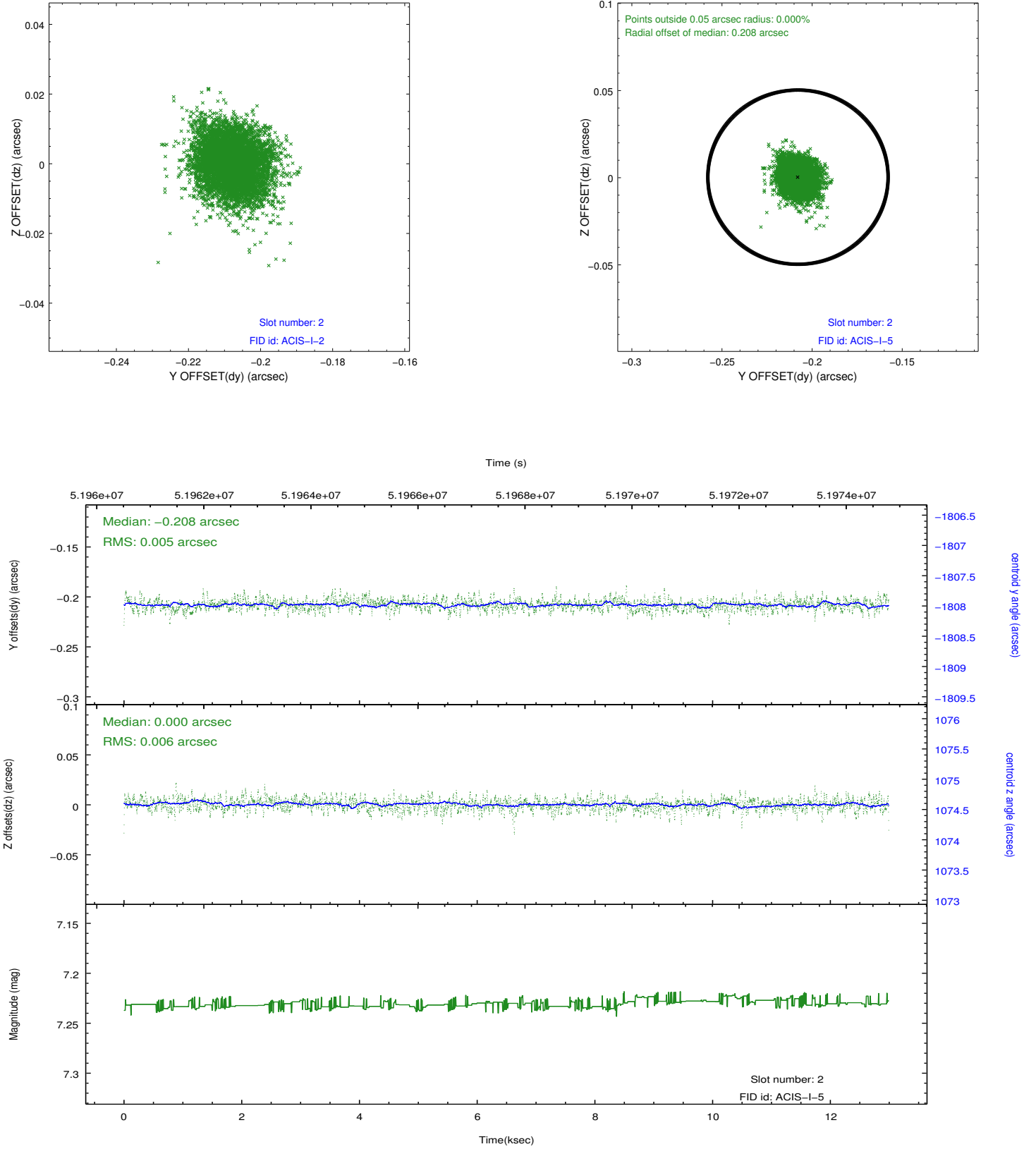
2.5.1 Slot 0



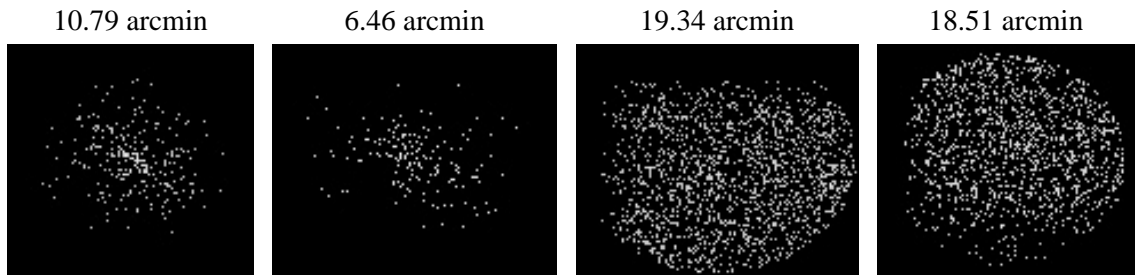
2.5.2 Slot 1



2.5.3 Slot 2



3 Point Sources



A Summary

A.1 Status

V&V Scientist	Joy Nichols
V&V Date (YYYY-MM-DD)	2010.07.30
V&V Edition	1
V&V Disposition and Status	OK
V&V Charge Time	12.24

A.2 Comments

ACIS effective area measurement.

===

Charge time for this ObsId remains at previous value of 12.24 ksec, although with the current processing the charge time would have been 12.25 ksec.

==

Slot 7 was removed from the aspect solution due to poor data quality. The aspect solution is not expected to be degraded by removing one guide star from the solution.

===

The focal plane temperature is approximately -100 C during this observation. This reprocessing of the data applies no CTI correction because none is available for this temperature at present.

The ACIS CTI correction has not been calibrated at this temperature, because it was early in the mission, and ACIS had not yet been lowered to the standard -119.7 C. Both front and back illuminated chips are affected. However a T_GAIN correction has been applied to the BI chips (ACIS-5 and ACIS-7) data included here.

The ACIS spectral response calibration is less accurate at these warmer temperatures than it is at -119.7 C. Users whose science objectives depend on the most accurate spectral response (ie: fitting line-rich spectra) may notice an effect. Users whose science objectives do not depend on the most accurate spectral response should not notice an effect.