

V&V Reference Report

L2 ASCDS Version : 8.1.2

Observation 466 - L2 Version 2

Chandra X-Ray Center

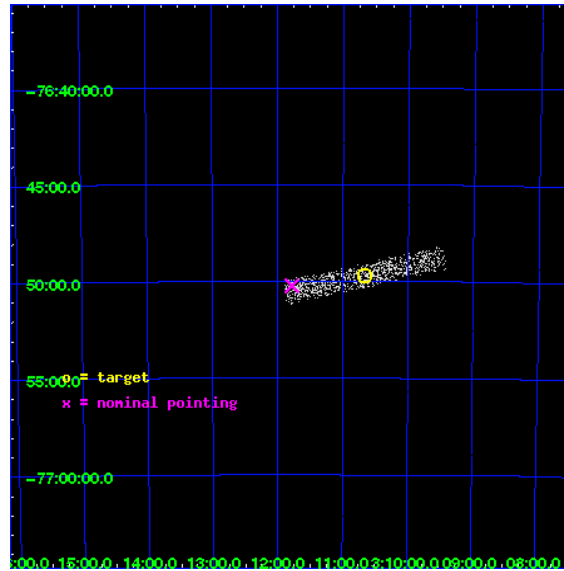
L2 Processing Date : Dec 17 2009

Contents

1	Front	2
2	OBI	3
2.1	OBI	3
2.1.1	Images	3
2.1.2	Bias	3
2.1.3	Parameters	4
2.1.4	Events	4
2.2	Compared Parameters	5
2.3	Aspect	6
2.4	Star Slots	9
2.4.1	Slot 3	9
2.4.2	Slot 4	10
2.4.3	Slot 5	11
2.4.4	Slot 6	12
2.4.5	Slot 7	13
2.5	FID Slots	14
2.5.1	Slot 0	14
2.5.2	Slot 1	15
2.5.3	Slot 2	16
3	Point Sources	17
A	Summary	18
A.1	Status	18
A.2	Comments	18

1 Front

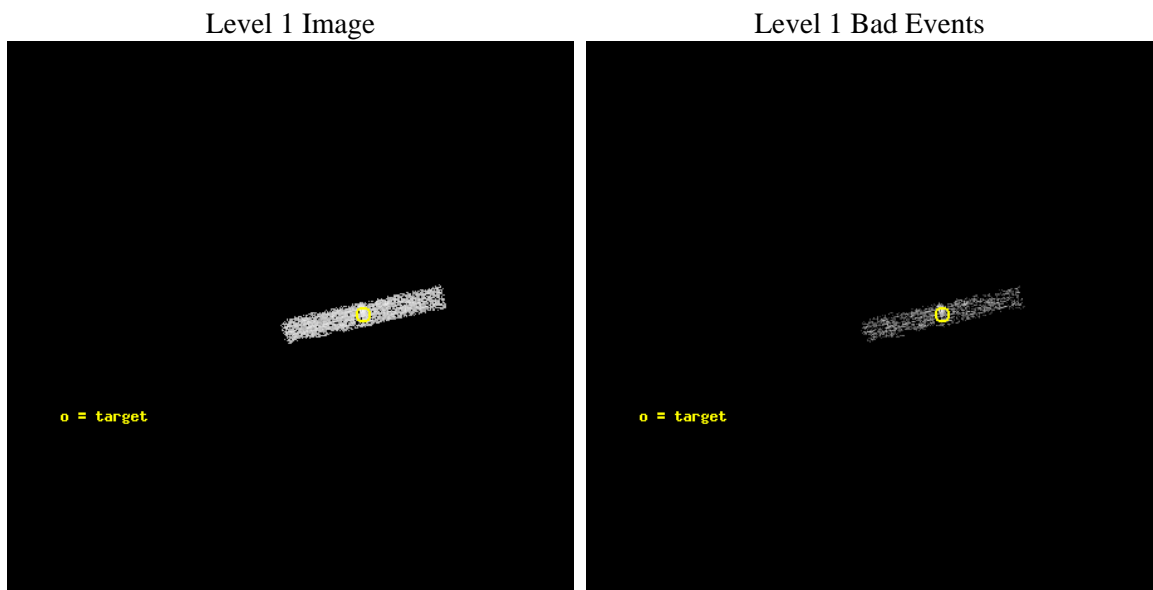
seq_num	790027	Sequence number
obs_id	466	Observation id
title	Blank sky; mispointed calibration	Proposal title
observer	Dr. CXC Calibration	Principal investigator
object	Blank Sky	Source name
dtcycle	0	
cycle	P	events from which exps? Prim/Second/Both
ra_targ	47.6659	Observer's specified target RA
dec_targ	-76.8284	Observer's specified target Dec
ra_nom	47.945434728646	Nominal RA
dec_nom	-76.837274454349	Nominal Dec
roll_nom	77.964080980802	Nominal Roll
revision	2	Processing version of data
ontime	3109.0	Sum of GTIs [s]
livetime	2873.1701907437	Livetime [s]
ontime3	3109.0	Sum of GTIs [s]
l2events	1028	Number of level 2 events



2 OBI

2.1 OBI

2.1.1 Images



2.1.2 Bias

Chip 3



2.1.3 Parameters

obi_num	0	Obi number	sched_exp_time	5000.000000	Scheduled observation exposure time
ascdsver	8.1.2	ASCDS version number	ontime	3109.0	Sum of GTIs [s]
caldbver	4.1.4	 	ontime3	3109.0	Sum of GTIs [s]
date	2009-12-17T06:25:14	Date and time of file creation	l1events	7193	Number of level 1 events
revision	2	Processing version of data			

2.1.4 Events

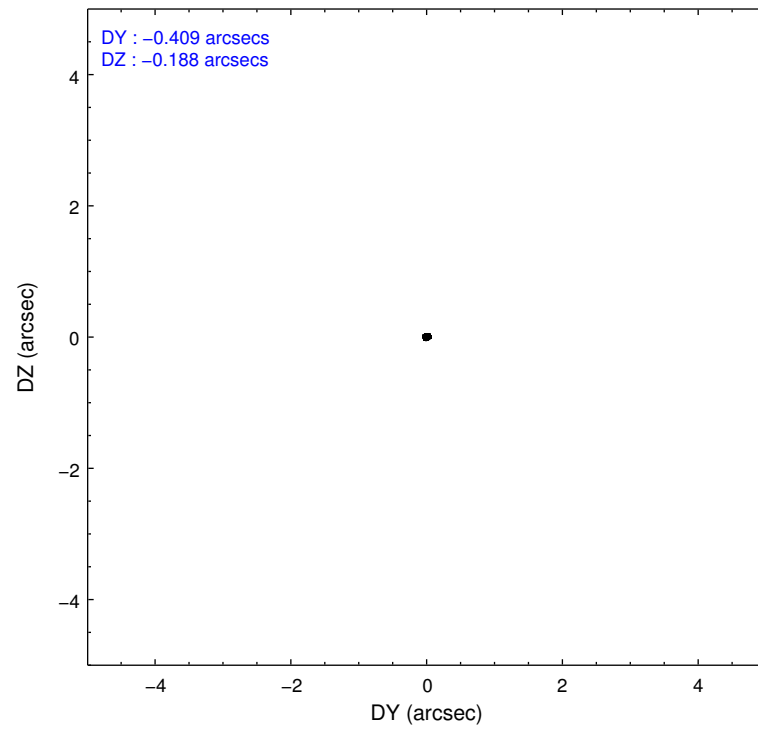
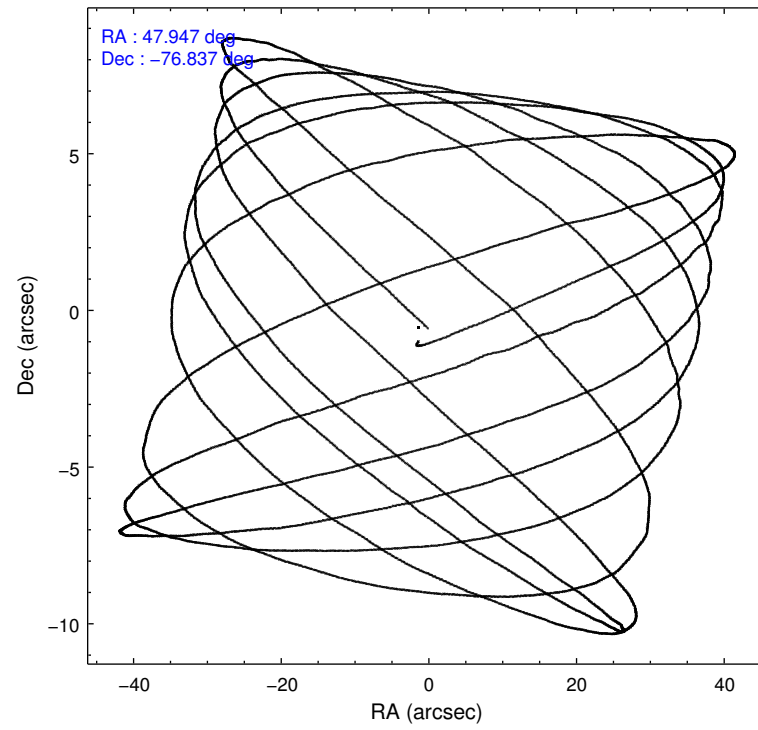
	ccd 3
level 1 events	7193
rejected events	6026
rejected %	83%

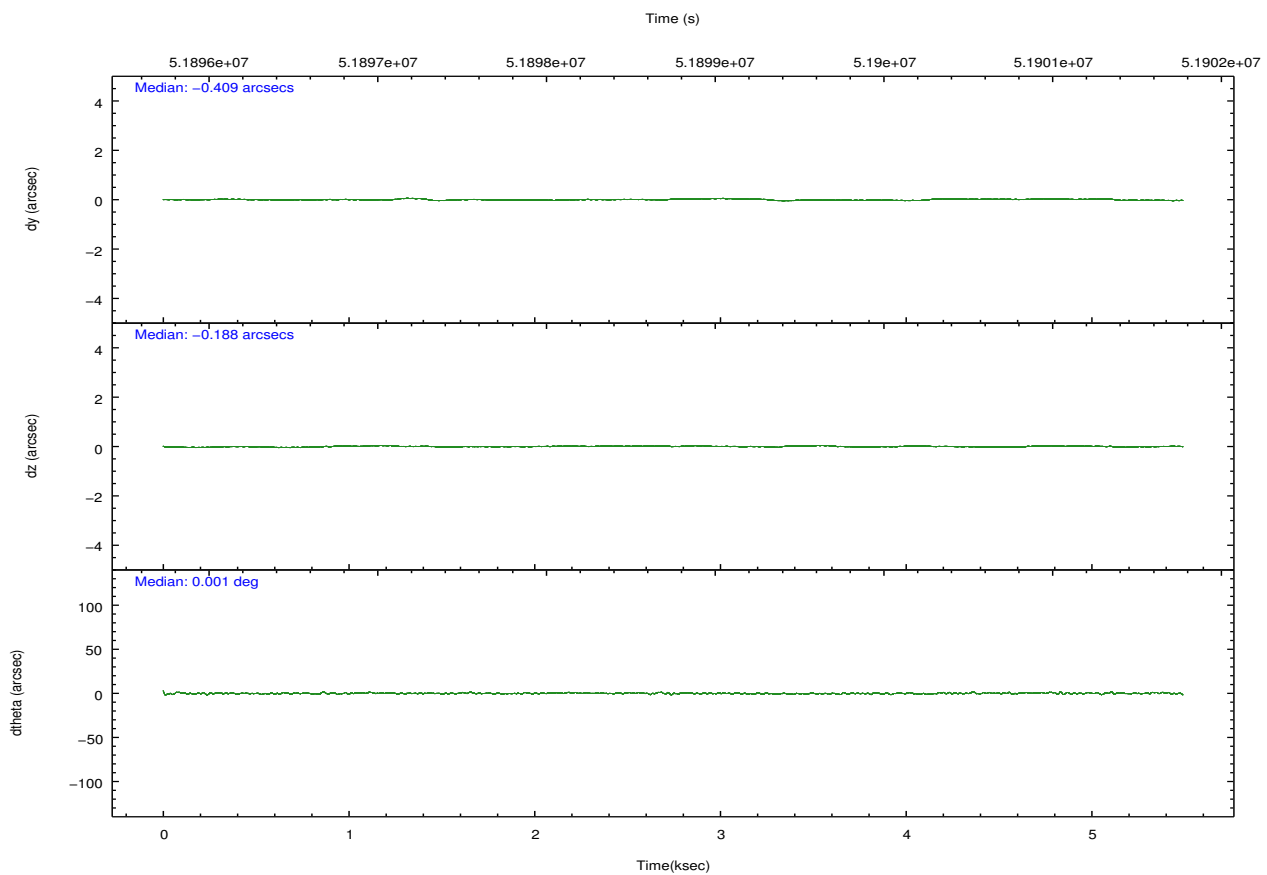
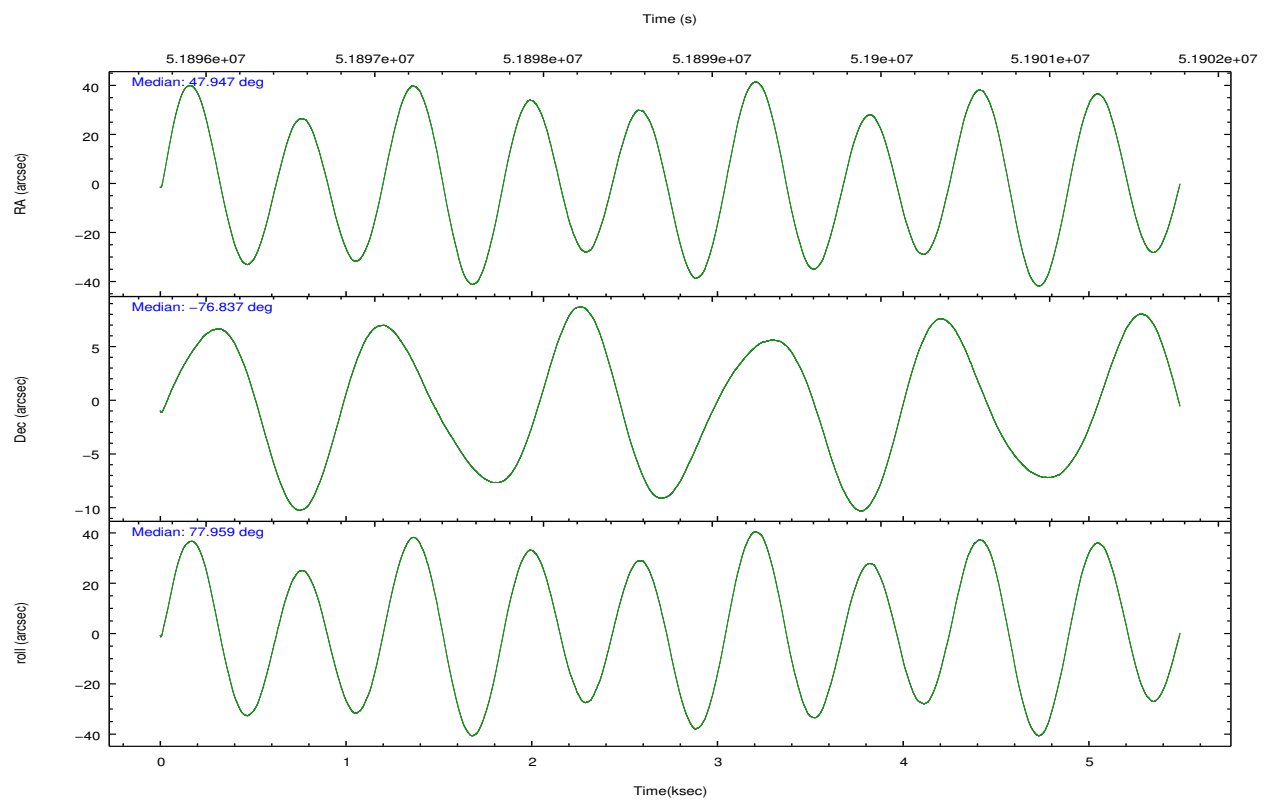
	ccd 3
grade 0 events	508
	7%
grade 1 events	0
	0%
grade 2 events	359
	4%
grade 3 events	111
	1%
grade 4 events	98
	1%
grade 5 events	85
	1%
grade 6 events	91
	1%
grade 7 events	5941
	82%

2.2 Compared Parameters

Parameter	Planned	Actual	Parameter	Planned	Actual
Instrument	ACIS	ACIS	Obspar format version number	6	6
Detector	ACIS-3	ACIS-3	Obspar file type	PREDICTED	ACTUAL
Grating	NONE	NONE	Obspar update status	NONE	UPDATED
Data mode	FAINT	FAINT	Number of optional ACIS chips dropped	0	0
Observation mode	POINTING	POINTING	On-chip summing requested	N	N
Pointing RA	47.979986	47.94543472864643	Subarray requested	CUSTOM	1/8
Pointing Dec	-76.864182	-76.83727445434944	Subarray start row	896	896
Pointing Roll	77.789042	77.96408098080231	Subarray row count	128	128
SIM focus pos (mm)	-0.782348	-0.7362356599963374	Alternating exposures requested	N	N
SIM defocus (mm)	0	0.04611255558364913	Primary exposure time	0.000000	0.5
SIM translation stage pos (mm)	-233.592463	-233.5874344608287			
SIM translation stage offset (mm)	0	-0.005018542100998502			
Observation start time	51896494.184000	51895821.339486			
Observation start date	1999-08-24T15:40:30	1999-08-24T15:30:21			
Observation end time	51901494.184000	51901620.789695			
Observation end date	1999-08-24T17:03:50	1999-08-24T17:07:00			
Read mode	TIMED	TIMED			

2.3 Aspect



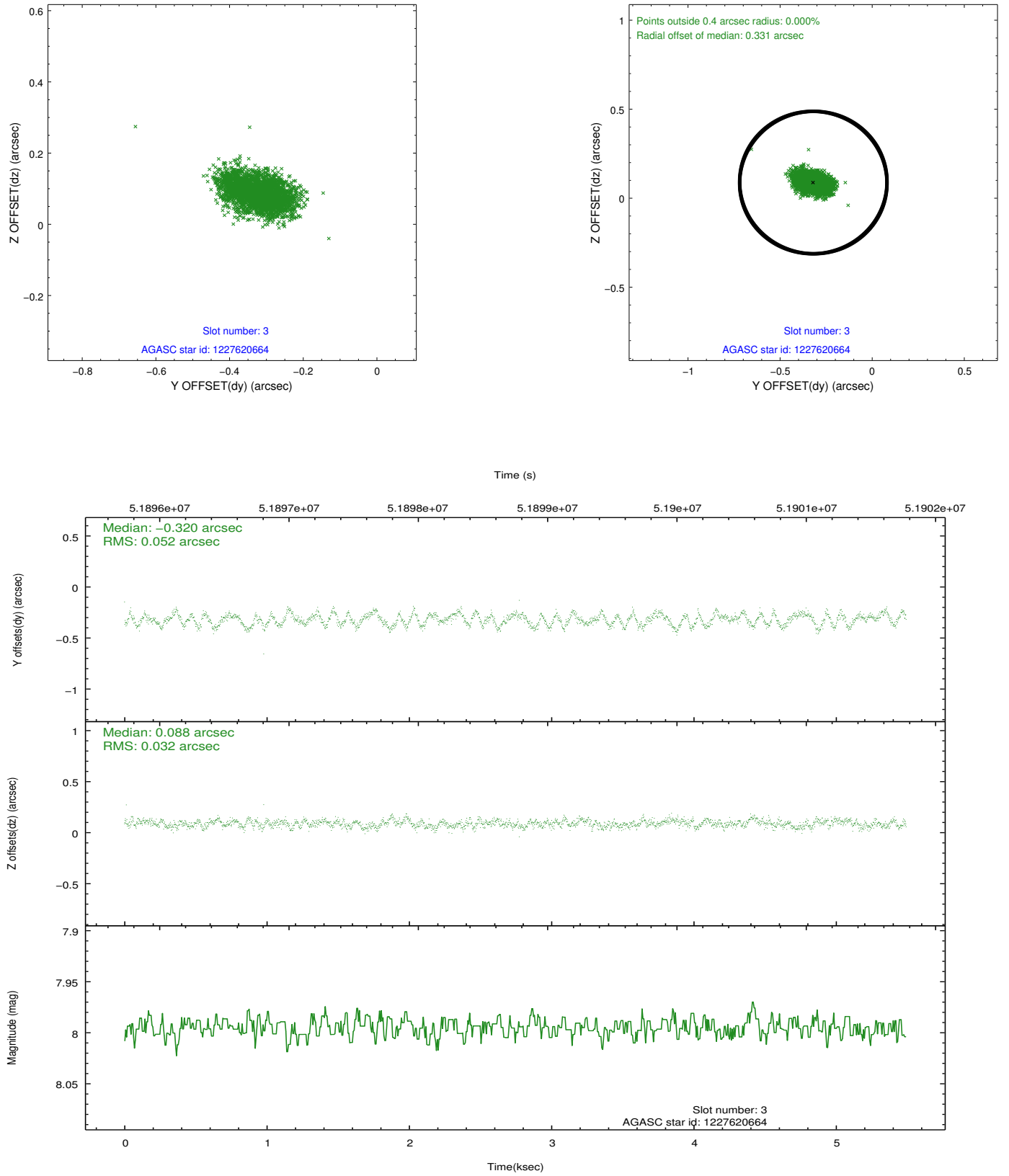


Slot Statistics

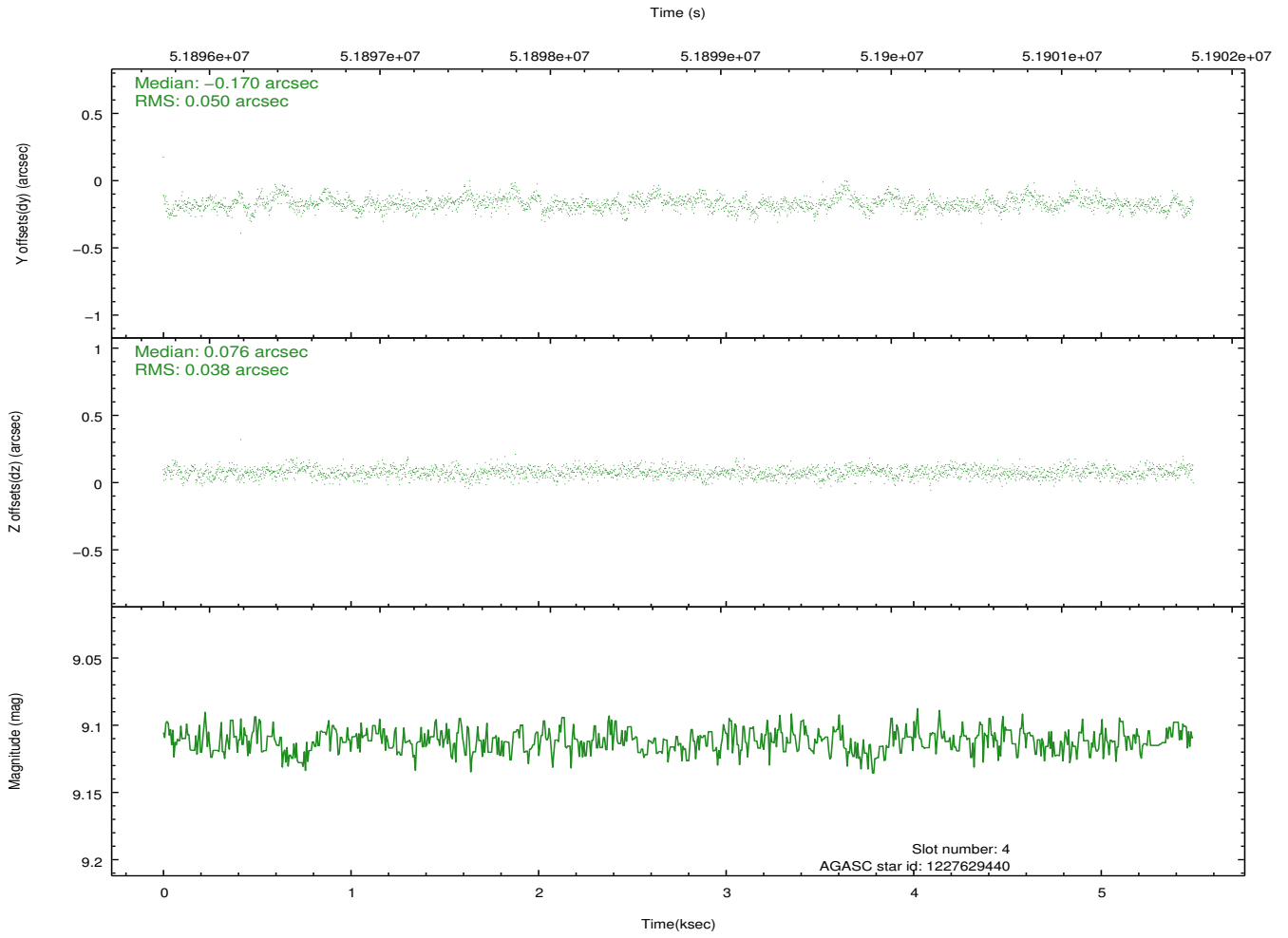
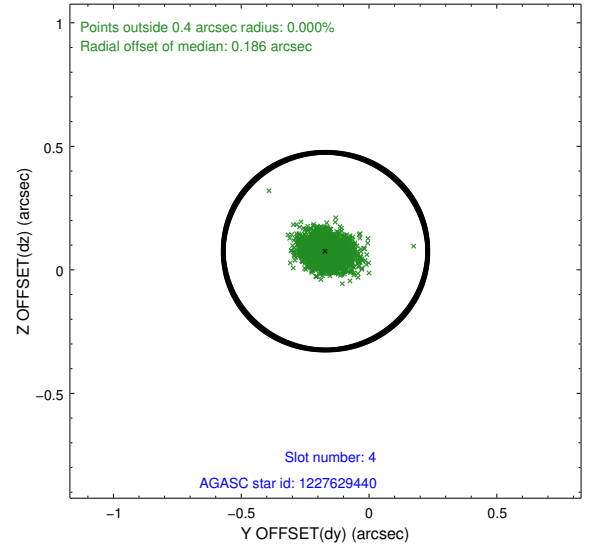
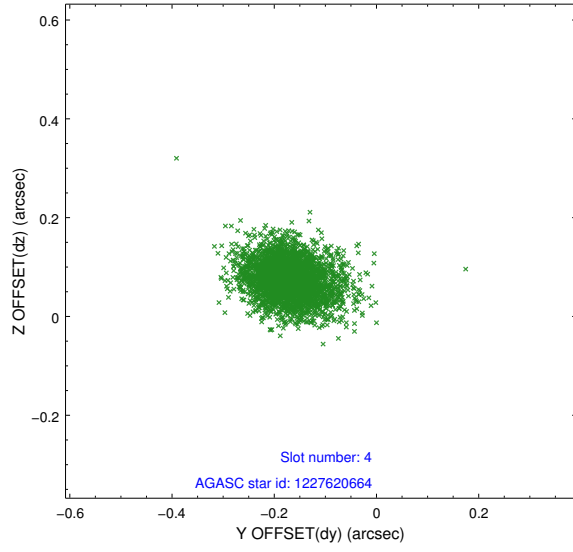
slot	status	id	mag	n_pts	med_dy	med_dz	dr1	dr2	ra	dec	mean_y	mean_z
0	FID	ACIS-I-2	7.21	2680	-0.030	0.056	0.009	0.016	0.000000	0.000000	-753.95	-829.28
1	FID	ACIS-I-4	7.24	2680	0.139	0.011	0.006	0.012	0.000000	0.000000	2160.18	1076.47
2	FID	ACIS-I-5	7.23	2680	-0.210	0.001	0.008	0.013	0.000000	0.000000	-1807.26	1075.05
3	GUIDE	1227620664	8.00	2680	-0.320	0.088	0.066	0.106	46.150563	-77.166043	-1395.74	1195.75
4	GUIDE	1227629440	9.11	2678	-0.170	0.076	0.064	0.111	48.268116	-77.028500	-531.73	-351.49
5	GUIDE	1227104240	9.79	2679	-0.093	0.005	0.091	0.152	48.955462	-76.524572	1359.56	-541.76
6	GUIDE	1227097864	9.92	2676	0.974	-0.270	0.085	0.141	46.669937	-76.763312	114.58	1130.01
7	GUIDE	1227098648	9.63	2675	-0.390	0.101	0.091	0.146	45.933257	-76.269428	1691.04	2157.05

2.4 Star Slots

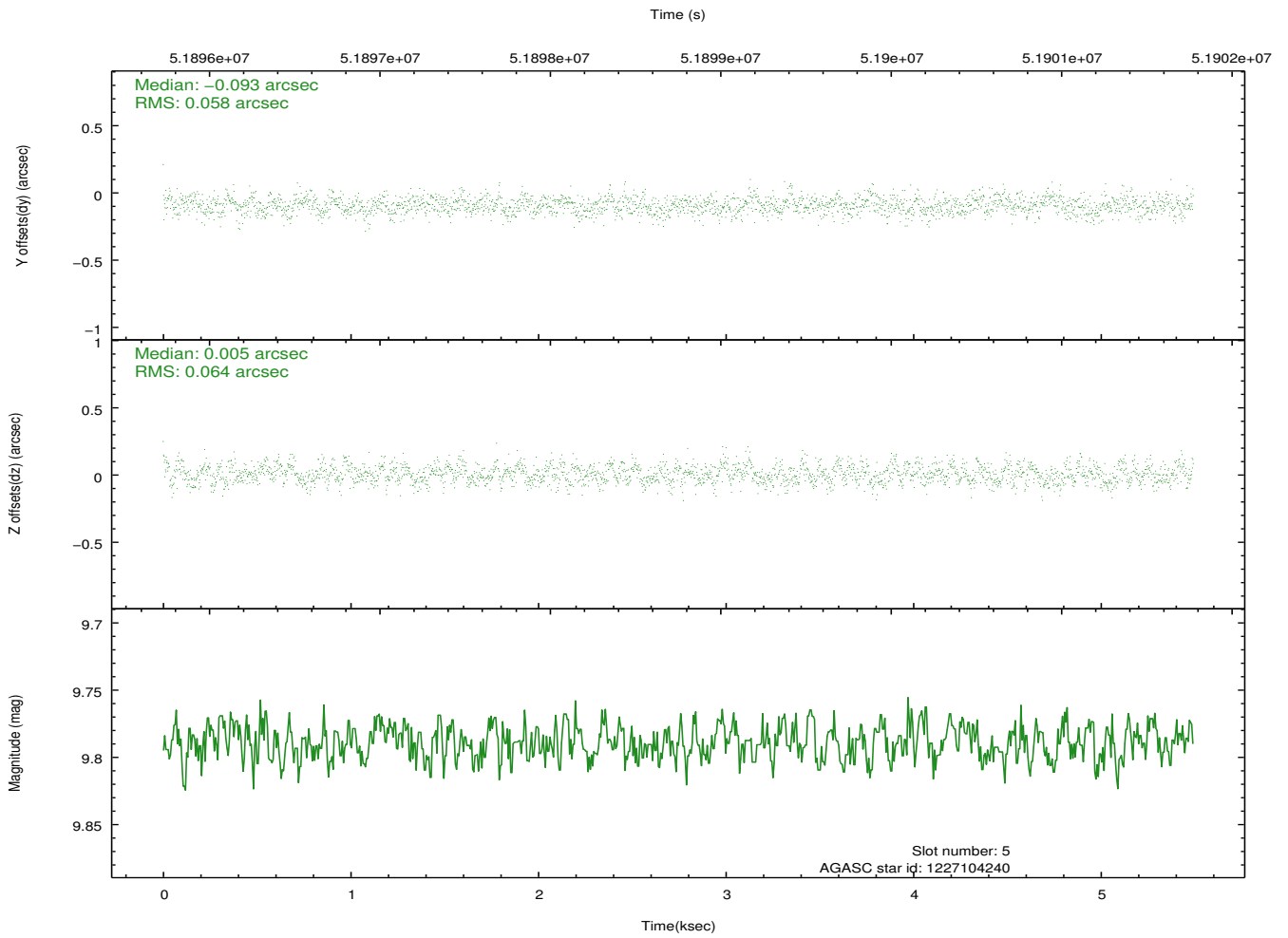
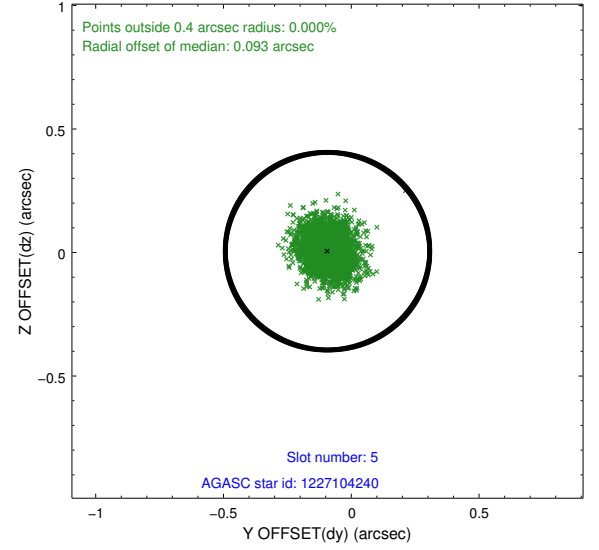
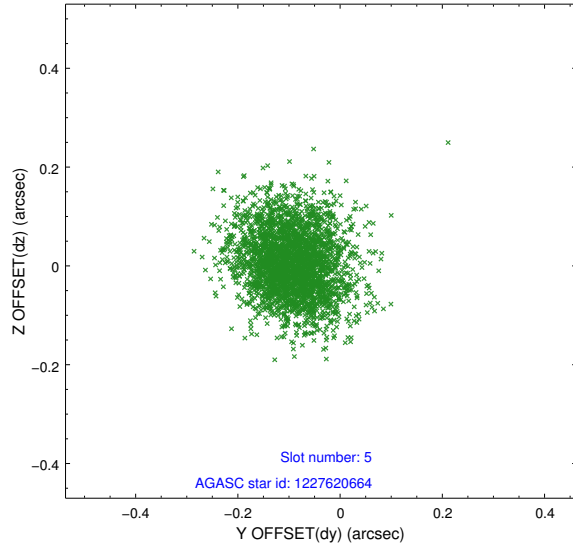
2.4.1 Slot 3



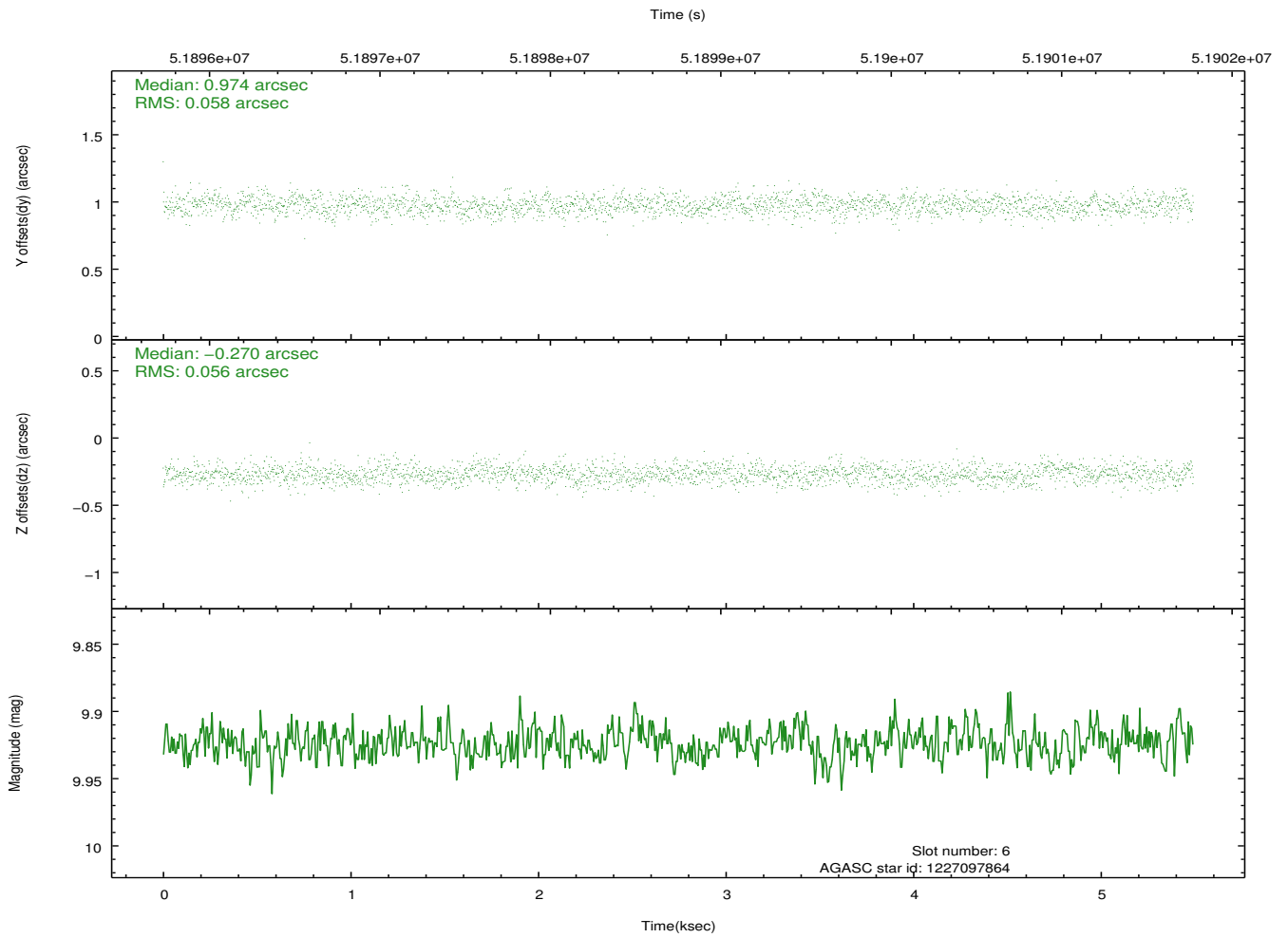
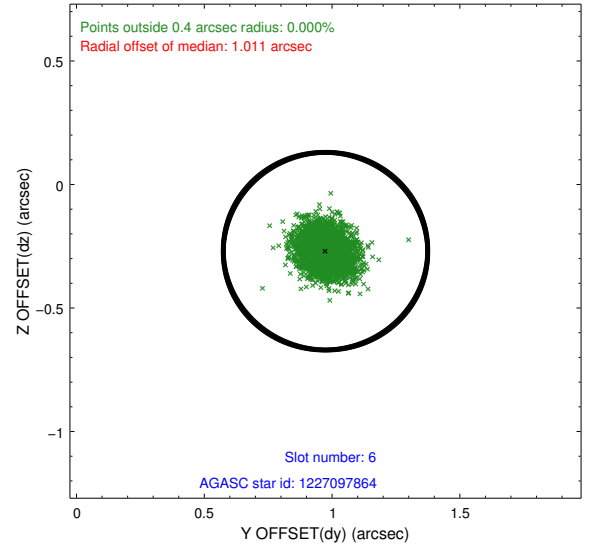
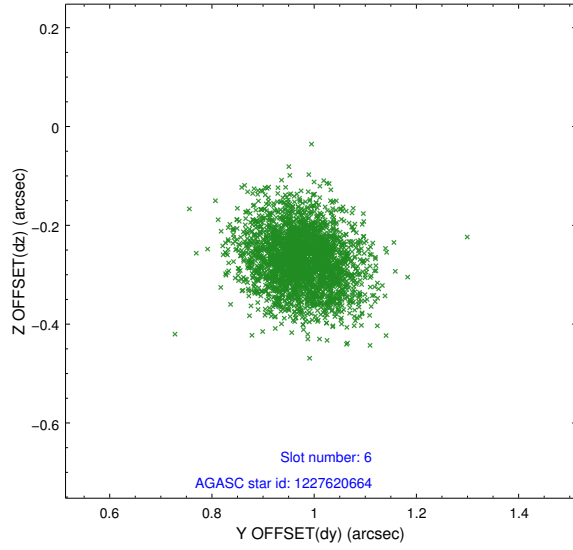
2.4.2 Slot 4



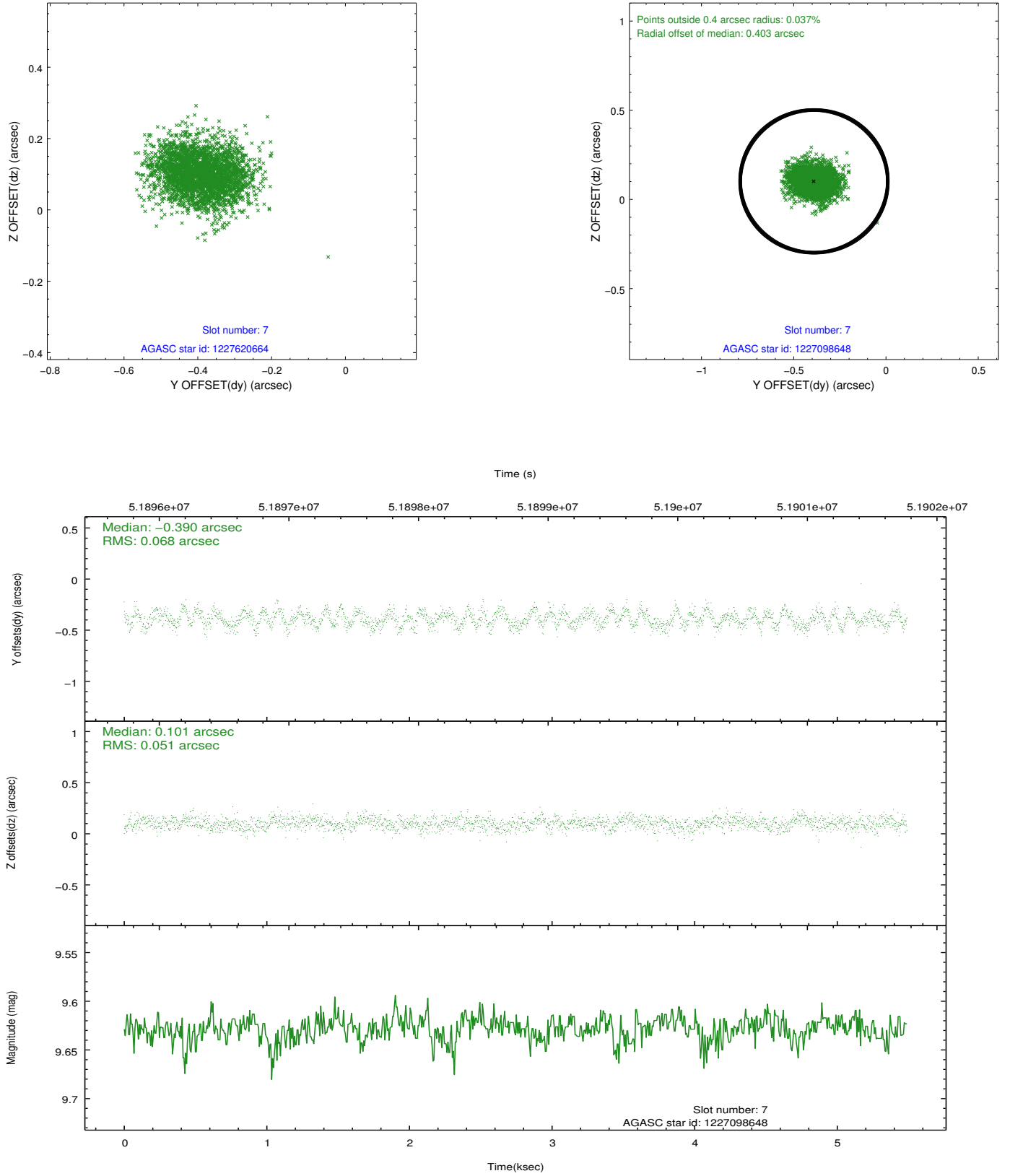
2.4.3 Slot 5



2.4.4 Slot 6

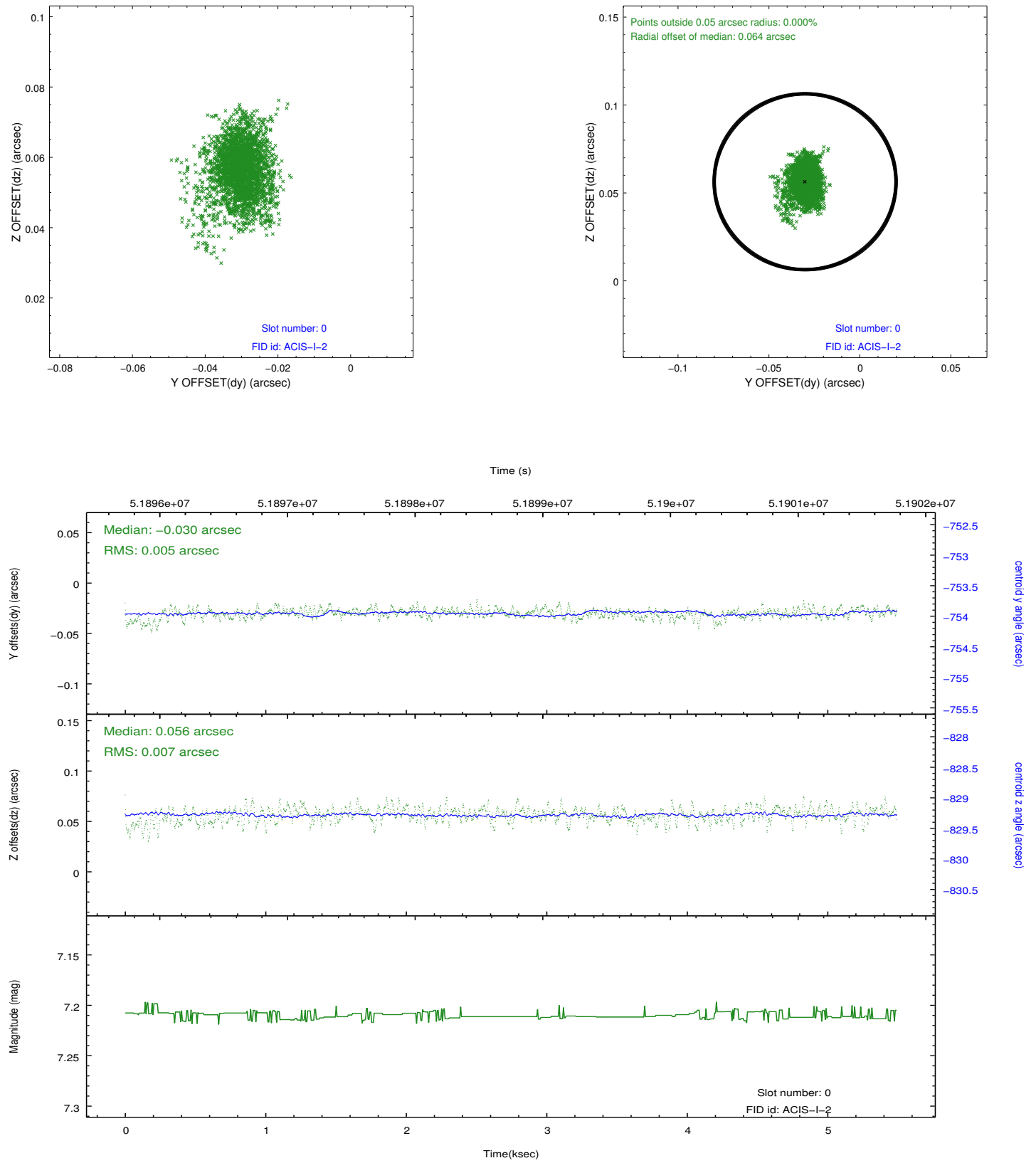


2.4.5 Slot 7

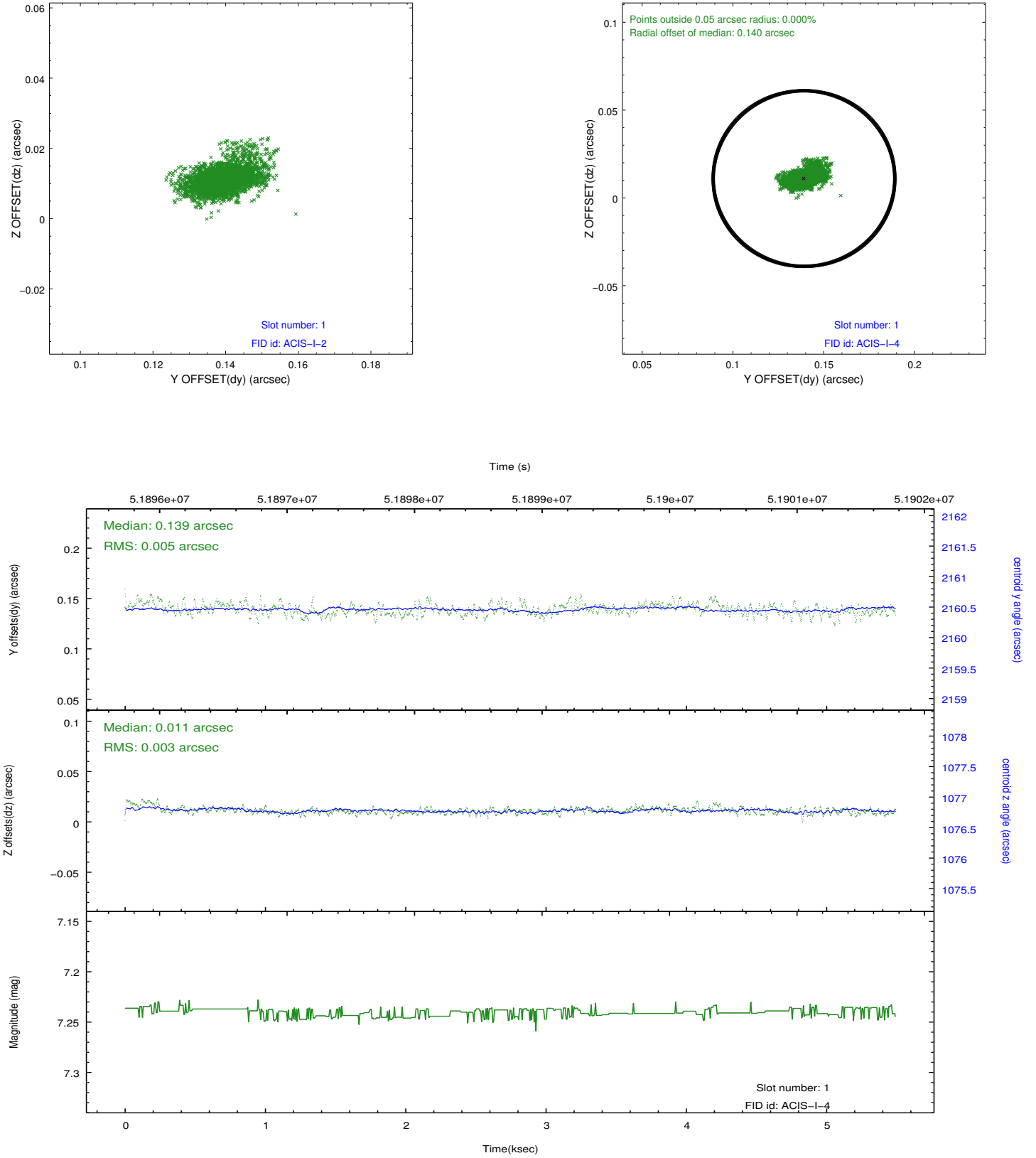


2.5 FID Slots

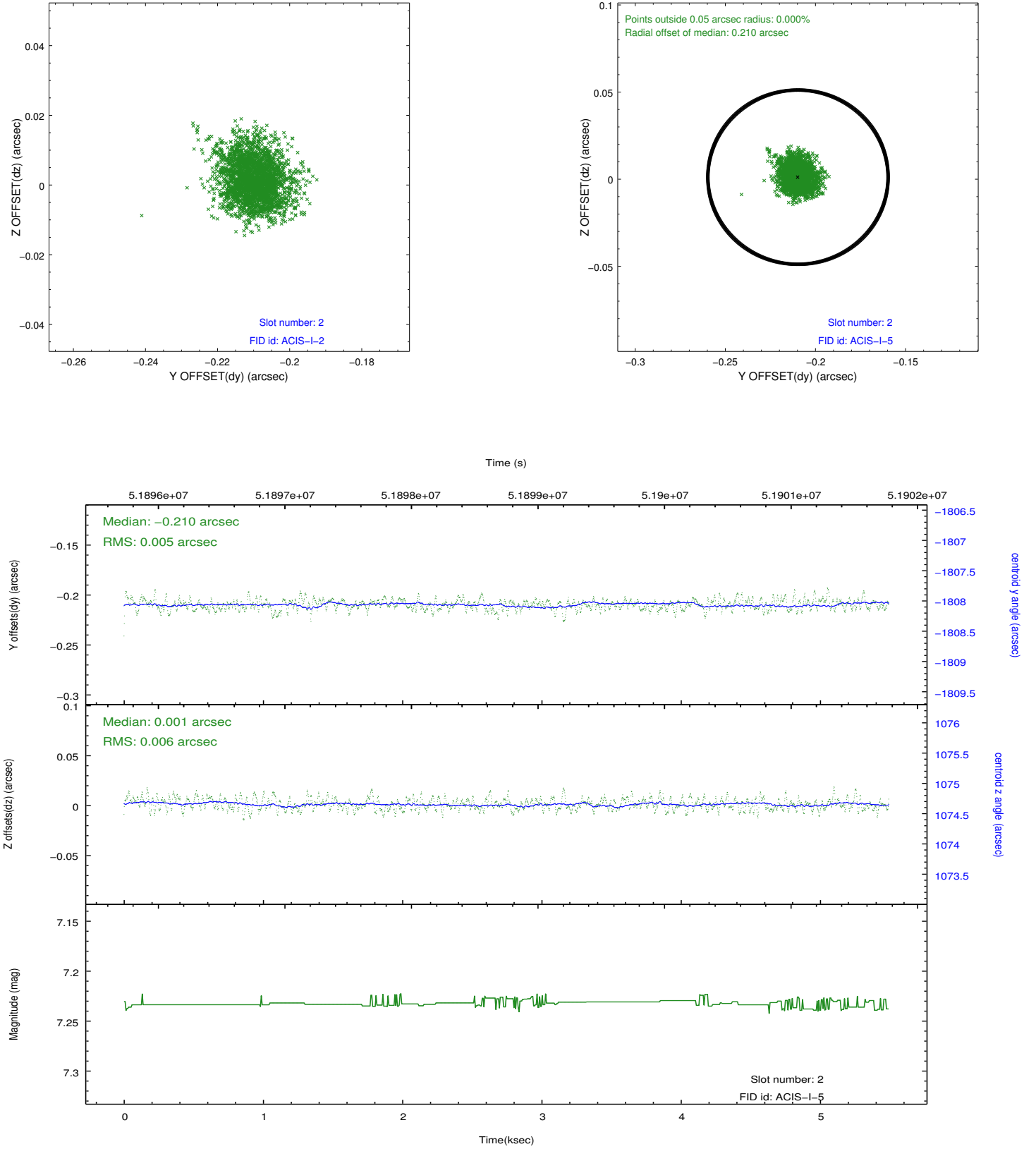
2.5.1 Slot 0



2.5.2 Slot 1



2.5.3 Slot 2



3 Point Sources

A Summary

A.1 Status

V&V Scientist	Joy Nichols
V&V Date (YYYY-MM-DD)	2010.01.21
V&V Edition	1
V&V Disposition and Status	OK
V&V Charge Time	3.109

A.2 Comments

There was an incorrect boresight alignment calculation for this obsid.
The pointing is therefore inaccurate and not of the intended field.

=====

Focal plane temperature is approximately -100 C degrees during this observation. ACIS has not been calibrated at this temperature, because the focal plan temperature of -119.7 C degrees became the standard shortly

after the start of the mission. Both front and back illuminated chips are affected.

The ACIS spectral response calibration is less accurate at these warmer temperatures than it is at -119.7 C. Users whose science objectives depend

on the most accurate spectral response (ie: fitting line-rich spectra) may

notice an effect. Users whose science objectives do not depend on the most accurate spectral response should not notice an effect.

This reprocessing

of the data applies no CTI correction because none is available for this temperature.

=====