

# V&V Reference Report

## L2 ASCDS Version : 8.1.2

Observation 1270 - L2 Version 2

Chandra X-Ray Center

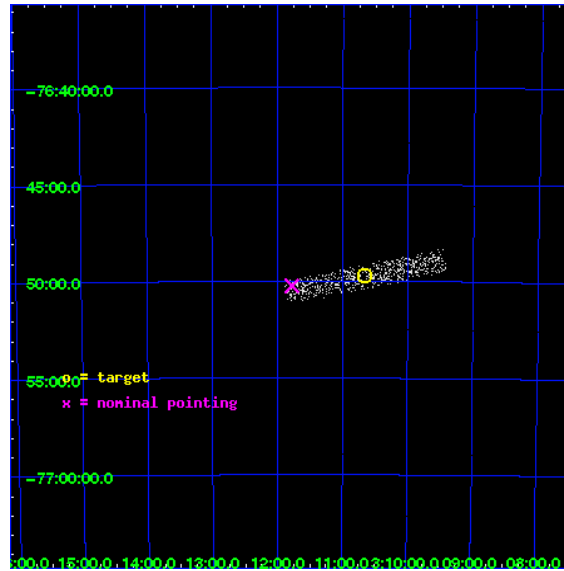
L2 Processing Date : Dec 17 2009

## Contents

<b>1</b>	<b>Front</b>	<b>2</b>
<b>2</b>	<b>OBI</b>	<b>3</b>
2.1	OBI . . . . .	3
2.1.1	Images . . . . .	3
2.1.2	Bias . . . . .	3
2.1.3	Parameters . . . . .	4
2.1.4	Events . . . . .	4
2.2	Compared Parameters . . . . .	5
2.3	Aspect . . . . .	6
2.4	Star Slots . . . . .	9
2.4.1	Slot 3 . . . . .	9
2.4.2	Slot 4 . . . . .	10
2.4.3	Slot 5 . . . . .	11
2.4.4	Slot 6 . . . . .	12
2.4.5	Slot 7 . . . . .	13
2.5	FID Slots . . . . .	14
2.5.1	Slot 0 . . . . .	14
2.5.2	Slot 1 . . . . .	15
2.5.3	Slot 2 . . . . .	16
<b>3</b>	<b>Point Sources</b>	<b>17</b>
<b>A</b>	<b>Summary</b>	<b>18</b>
A.1	Status . . . . .	18
A.2	Comments . . . . .	18

# 1 Front

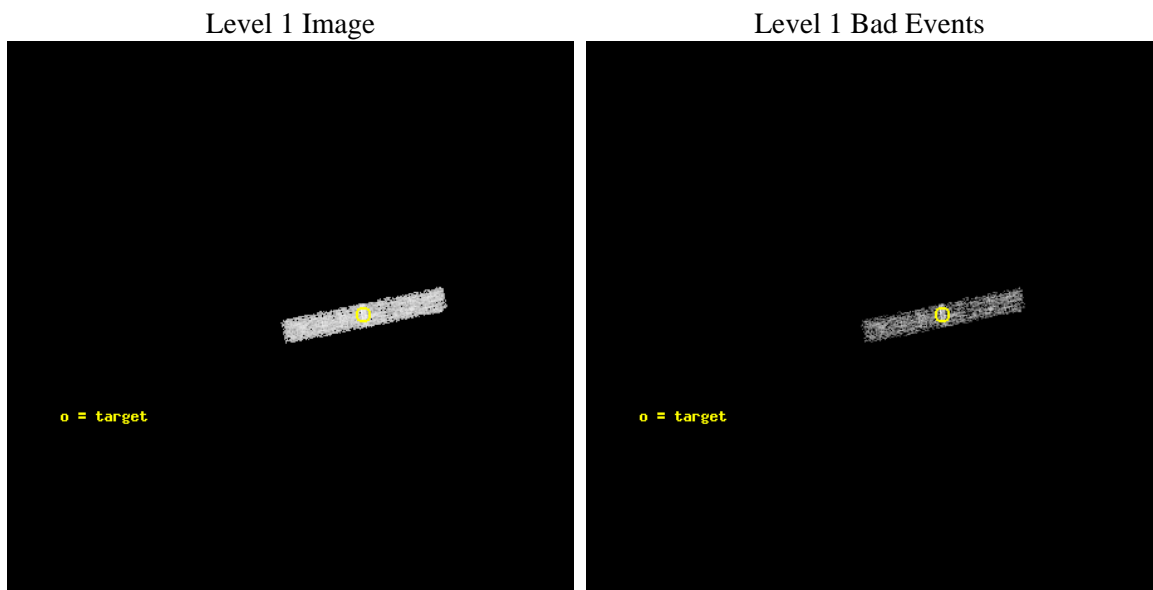
seq_num	780220	Sequence number
obs_id	1270	Observation id
title	Blank sky; mispointed calibration	Proposal title
observer	Dr. CXC Calibration	Principal investigator
object	Blank Sky	Source name
dtcycle	0	&#160
cycle	P	events from which exps? Prim/Second/Both
ra_targ	47.6659	Observer's specified target RA
dec_targ	-76.8284	Observer's specified target Dec
ra_nom	47.944492349898	Nominal RA
dec_nom	-76.837386880041	Nominal Dec
roll_nom	78.536609211039	Nominal Roll
revision	2	Processing version of data
ontime	5895.0	Sum of GTIs [s]
livetime	5447.8411947361	Livetime [s]
ontime3	5895.0	Sum of GTIs [s]
l2events	692	Number of level 2 events



## 2 OBI

### 2.1 OBI

#### 2.1.1 Images



#### 2.1.2 Bias

Chip 3



### 2.1.3 Parameters

obi_num	0	Obi number	sched_exp_time	6000.000000	Scheduled observation exposure time
ascdsver	8.1.2	ASCDS version number	ontime	5895.0	Sum of GTIs [s]
caldbver	4.1.4	&#160	ontime3	5895.0	Sum of GTIs [s]
date	2009-12-17T07:16:33	Date and time of file creation	l1events	13092	Number of level 1 events
revision	2	Processing version of data			

### 2.1.4 Events

	<b>ccd 3</b>
level 1 events	13092
rejected events	12097
rejected %	92%

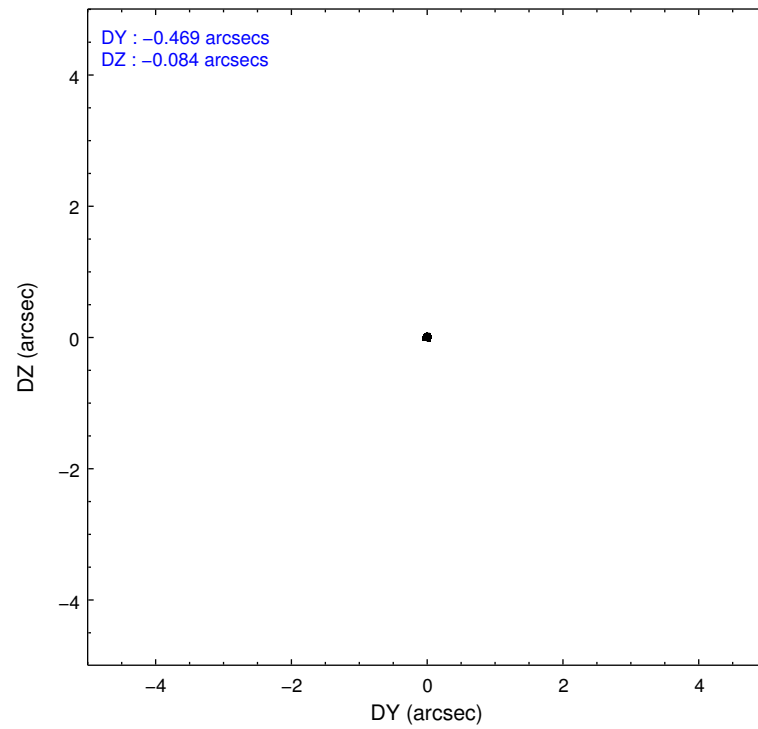
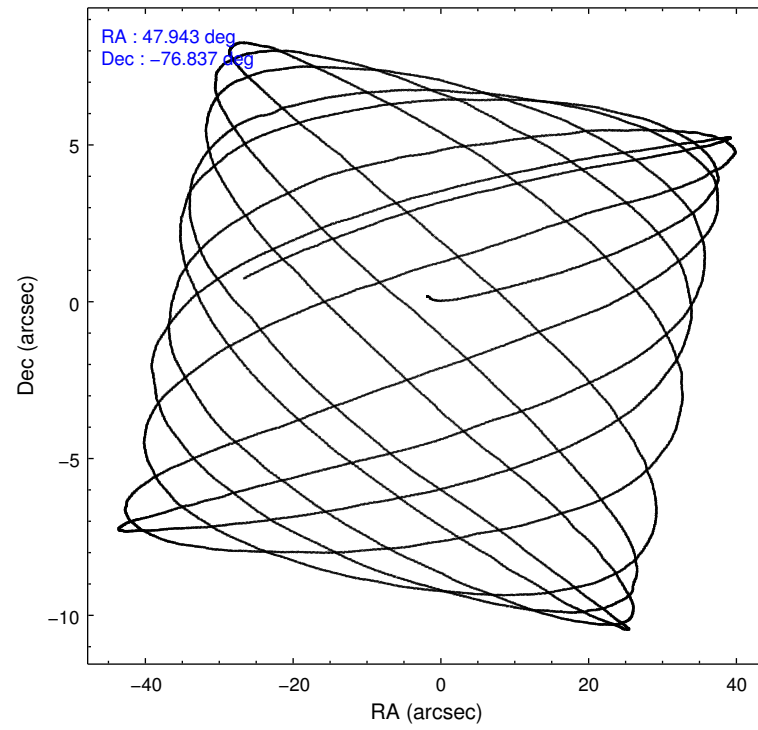
	<b>ccd 3</b>
grade 0 events	255
	1%
grade 1 events	0
	0%
grade 2 events	187
	1%
grade 3 events	229
	1%
grade 4 events	191
	1%
grade 5 events	170
	1%
grade 6 events	133
	1%
grade 7 events	11927
	91%

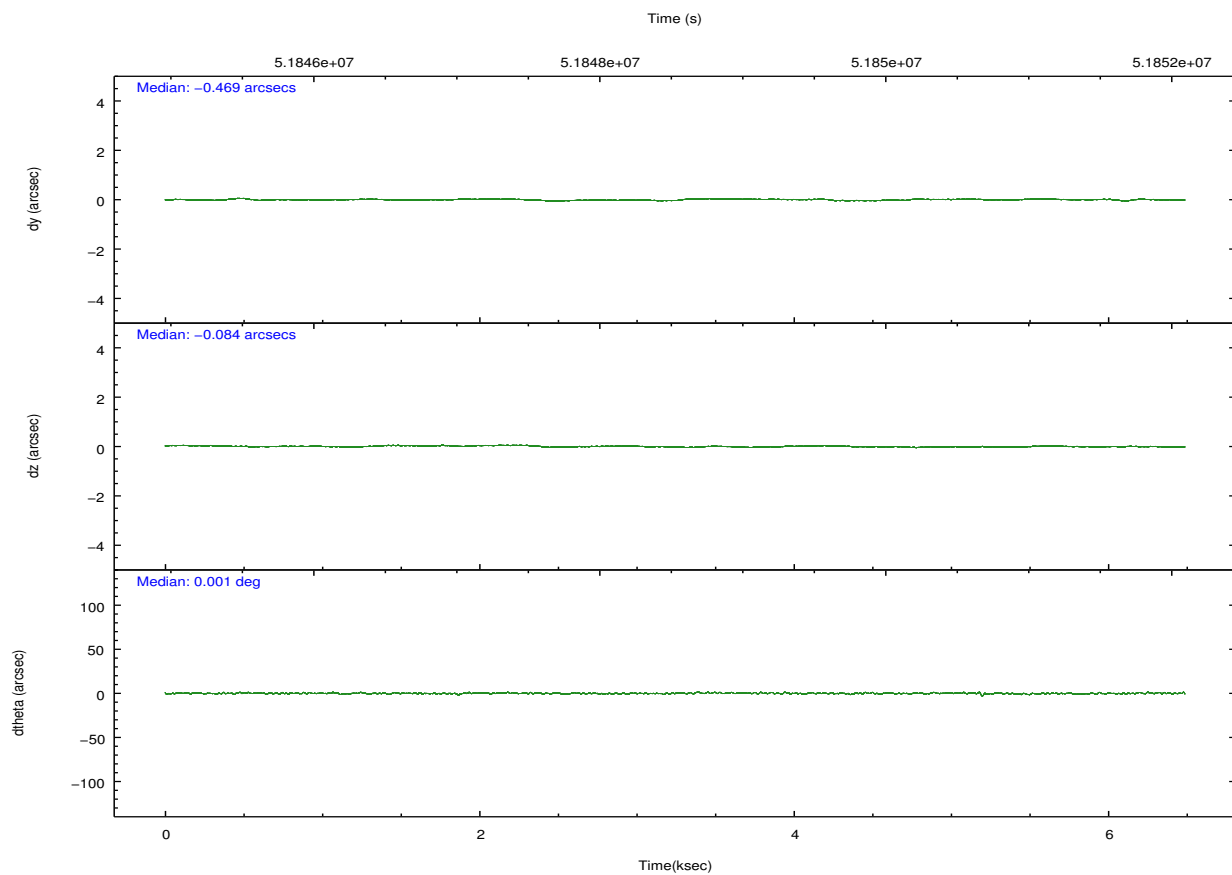
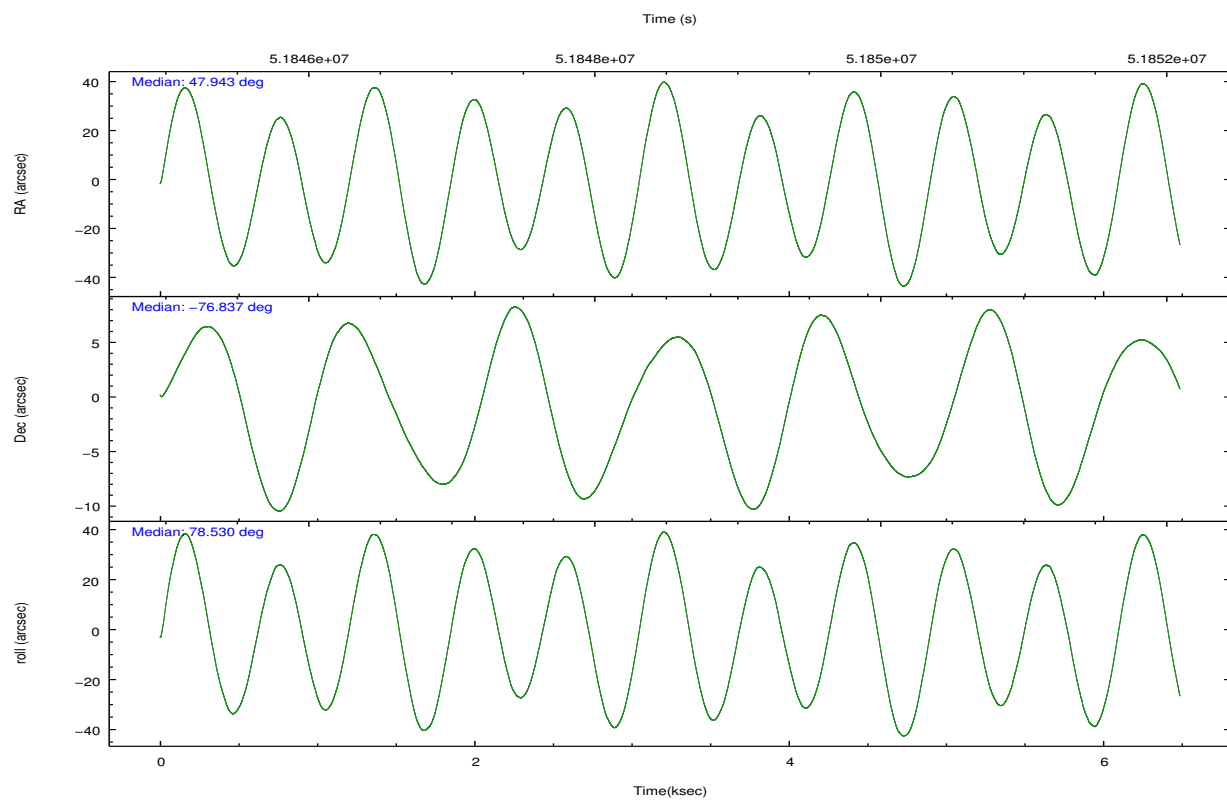


## 2.2 Compared Parameters

Parameter	Planned	Actual	Parameter	Planned	Actual
Instrument	ACIS	ACIS	Obspar format version number	6	6
Detector	ACIS-3	ACIS-3	Obspar file type	PREDICTED	ACTUAL
Grating	NONE	NONE	Obspar update status	NONE	UPDATED
Data mode	FAINT	FAINT	Number of optional ACIS chips dropped	0	0
Observation mode	POINTING	POINTING	On-chip summing requested	N	N
Pointing RA	47.980022	47.94449234989821	Subarray requested	CUSTOM	1/8
Pointing Dec	-76.864180	-76.83738688004064	Subarray start row	896	896
Pointing Roll	78.362511	78.53660921103906	Subarray row count	128	128
SIM focus pos (mm)	-0.282348	-0.2445362258495889	Alternating exposures requested	N	N
SIM defocus (mm)	0.5	0.5378119897303977	Primary exposure time	0.000000	0.5
SIM translation stage pos (mm)	-233.592463	-233.5874344608287			
SIM translation stage offset (mm)	0	-0.005018542100998502			
Observation start time	51845770.184000	51844875.762653			
Observation start date	1999-08-24T01:35:06	1999-08-24T01:21:15			
Observation end time	51851770.184000	51851897.012906			
Observation end date	1999-08-24T03:15:06	1999-08-24T03:18:17			
Read mode	TIMED	TIMED			

## 2.3 Aspect



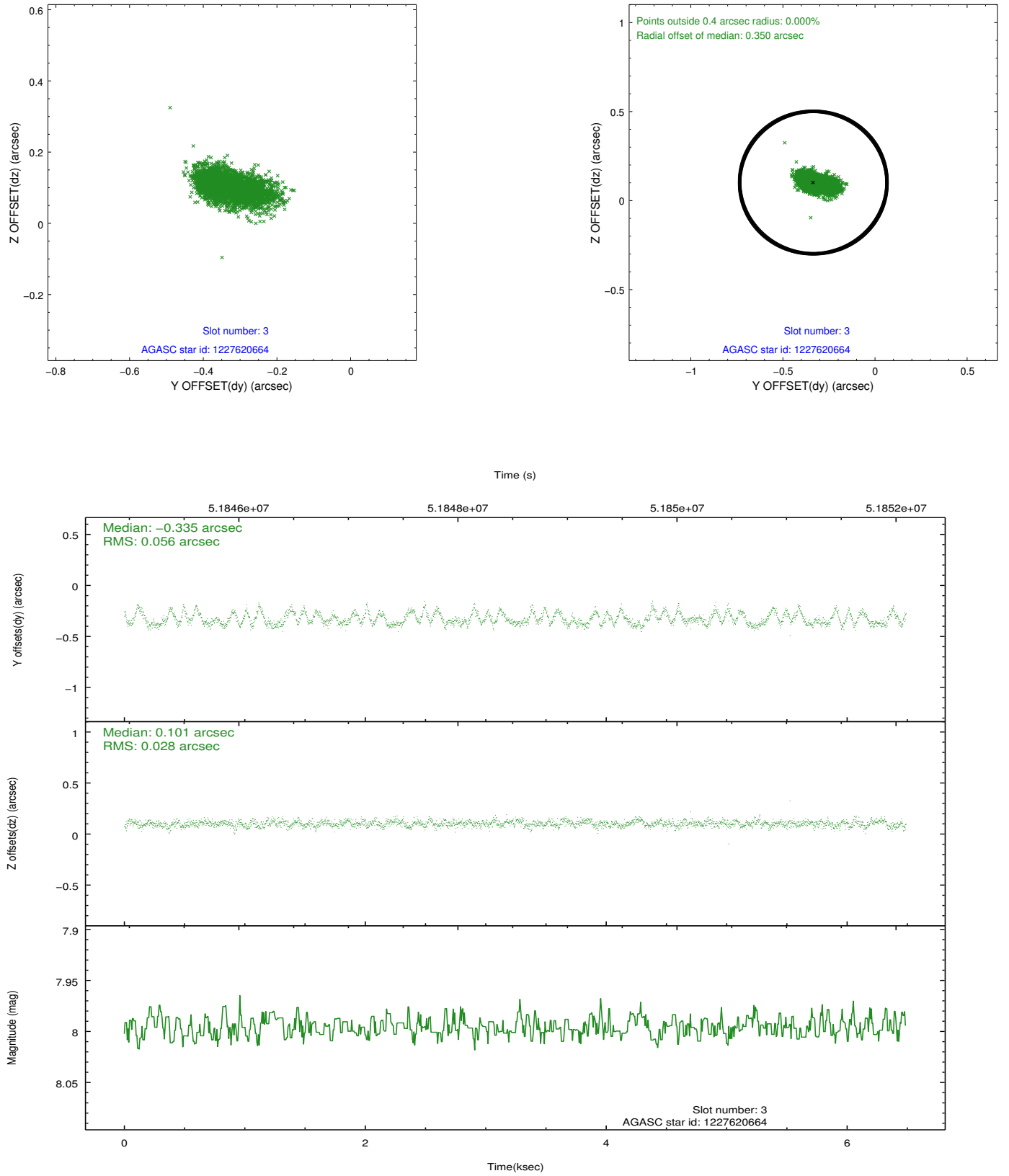


Slot Statistics

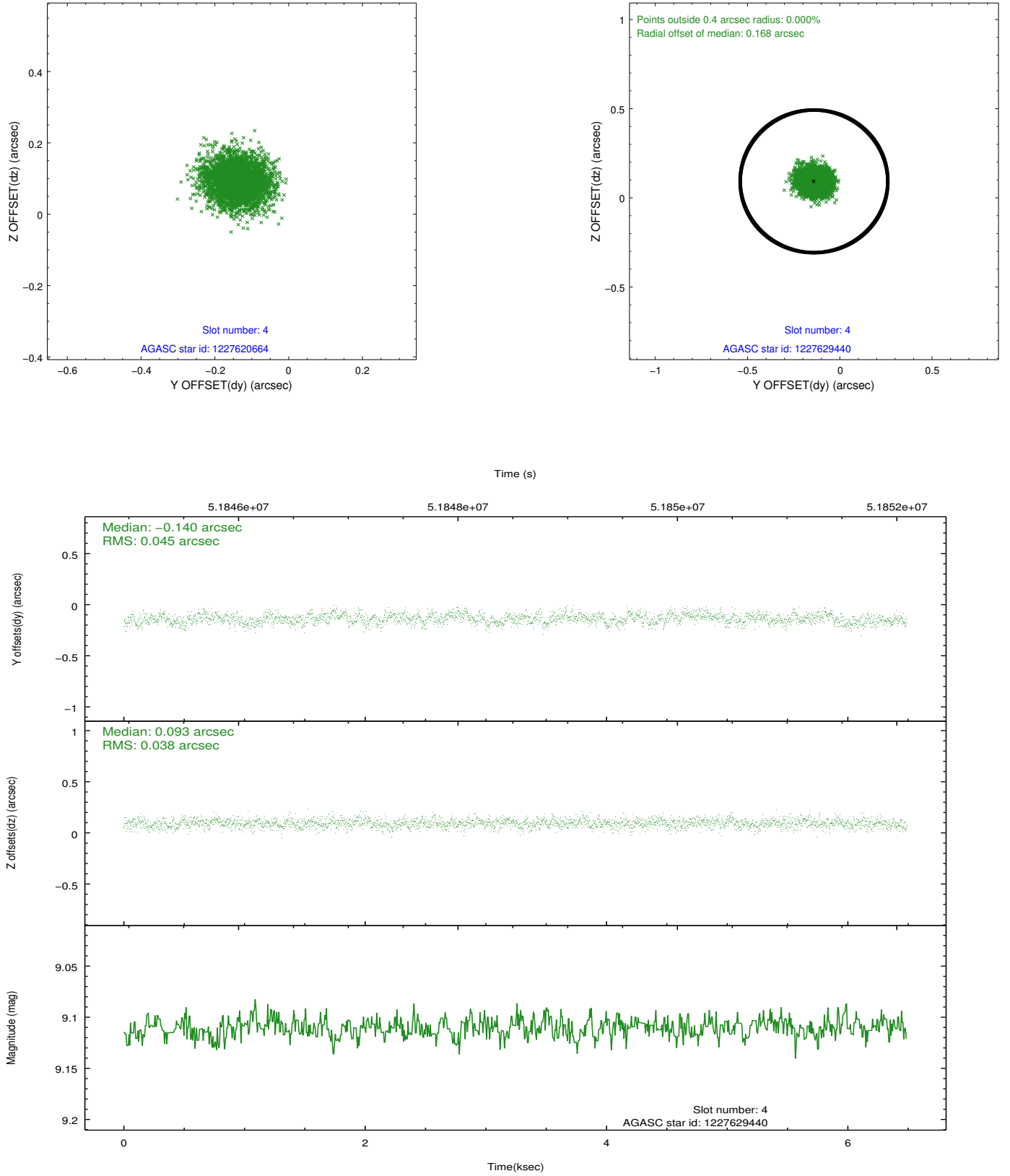
slot	status	id	mag	n_pts	med_dy	med_dz	dr1	dr2	ra	dec	mean_y	mean_z
0	FID	ACIS-I-2	7.21	3166	-0.026	0.071	0.011	0.017	0.000000	0.000000	-753.93	-829.42
1	FID	ACIS-I-4	7.24	3166	0.115	0.005	0.009	0.015	0.000000	0.000000	2160.36	1076.45
2	FID	ACIS-I-5	7.23	3166	-0.190	-0.007	0.008	0.014	0.000000	0.000000	-1807.39	1074.92
3	GUIDE	1227620664	8.00	3165	-0.335	0.101	0.064	0.114	46.150563	-77.166043	-1381.81	1207.97
4	GUIDE	1227629440	9.11	3166	-0.140	0.093	0.064	0.103	48.268116	-77.028500	-533.22	-347.92
5	GUIDE	1227104240	9.79	3163	-0.091	0.025	0.090	0.146	48.955462	-76.524572	1355.99	-557.02
6	GUIDE	1227097864	9.92	3165	0.968	-0.282	0.089	0.145	46.669937	-76.763312	127.70	1127.12
7	GUIDE	1227098648	9.63	3160	-0.407	0.063	0.087	0.140	45.933257	-76.269428	1714.42	2138.19

## 2.4 Star Slots

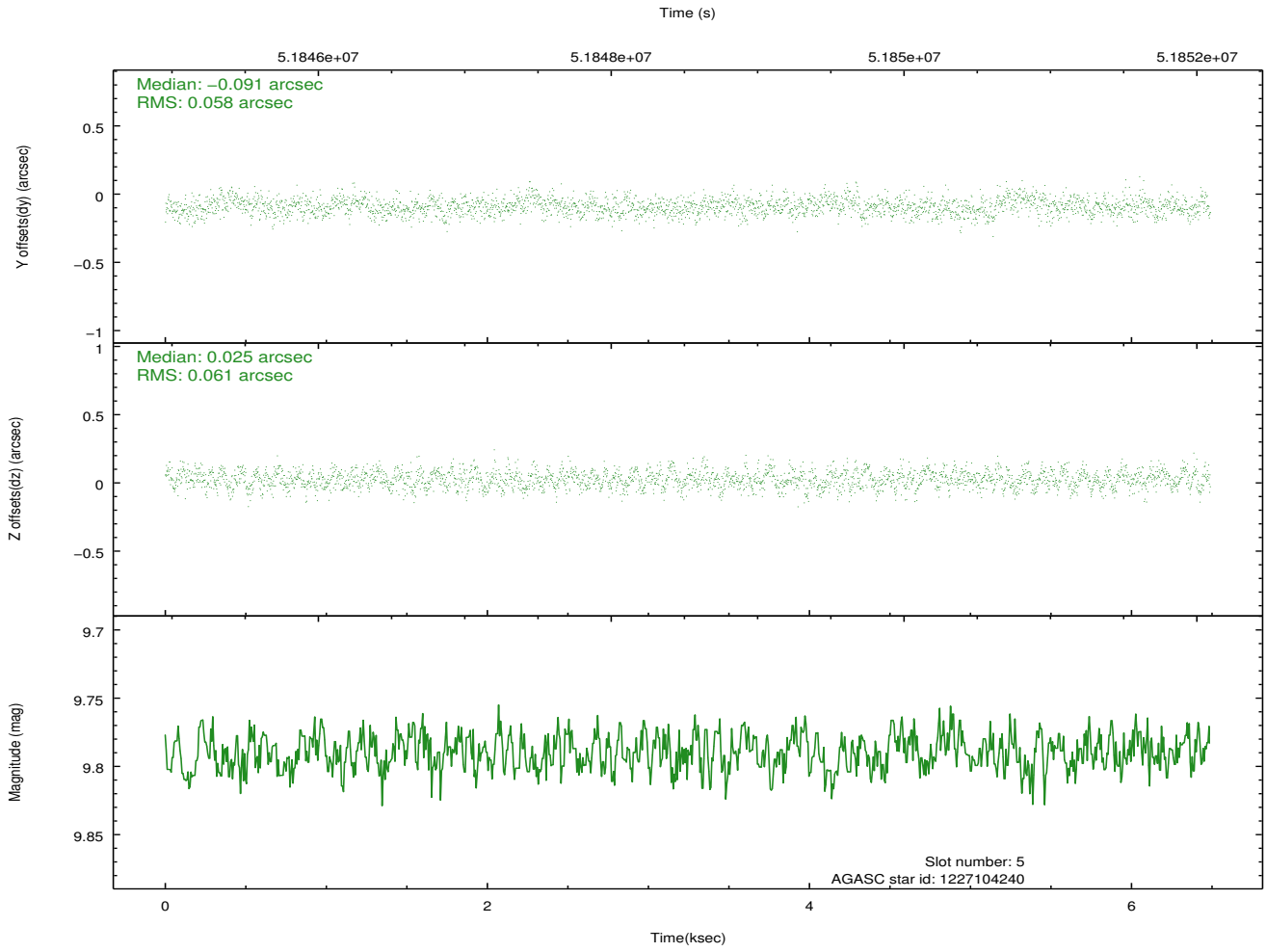
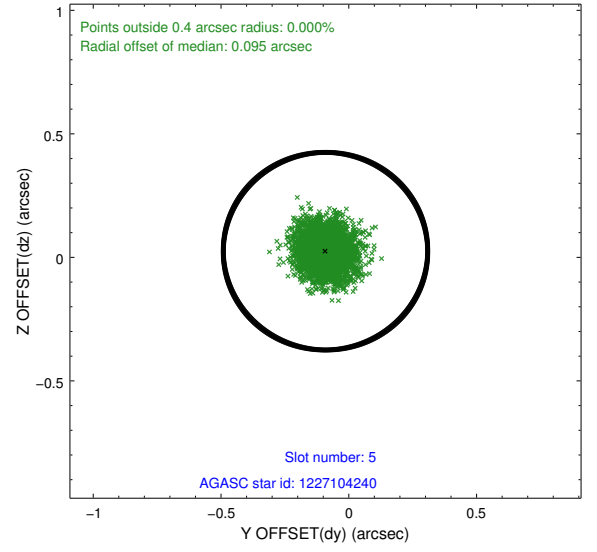
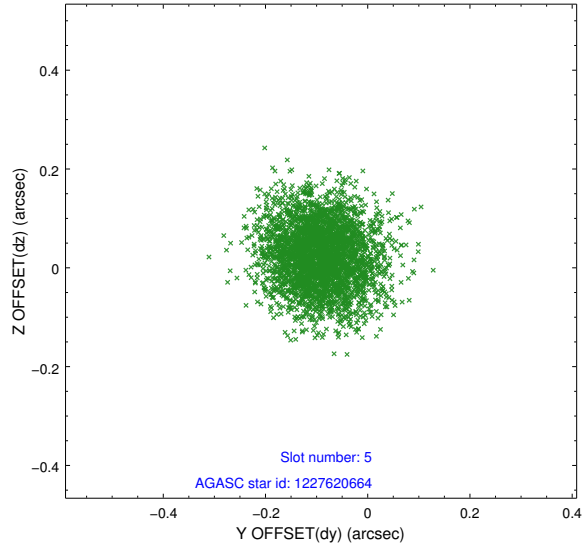
### 2.4.1 Slot 3



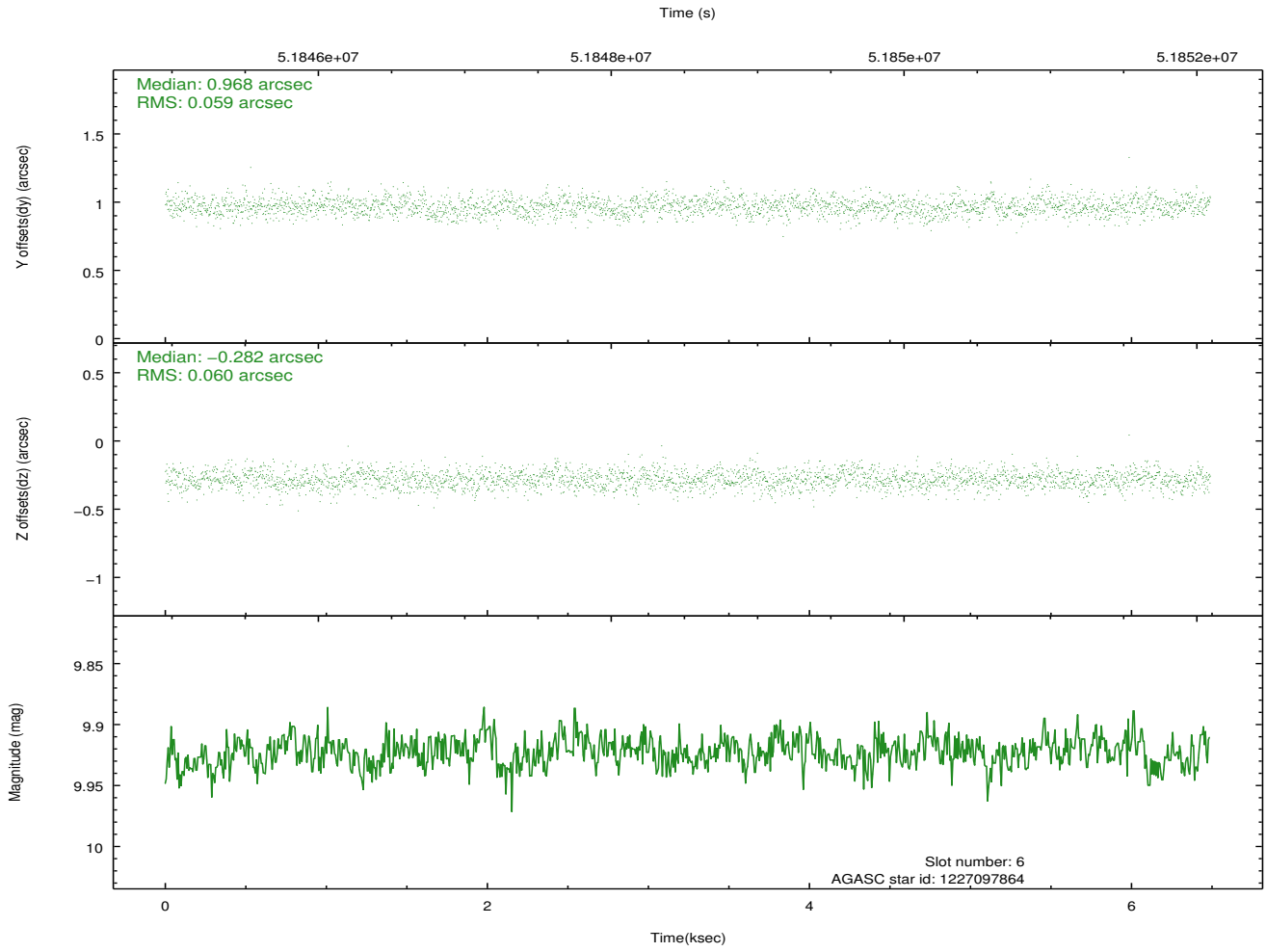
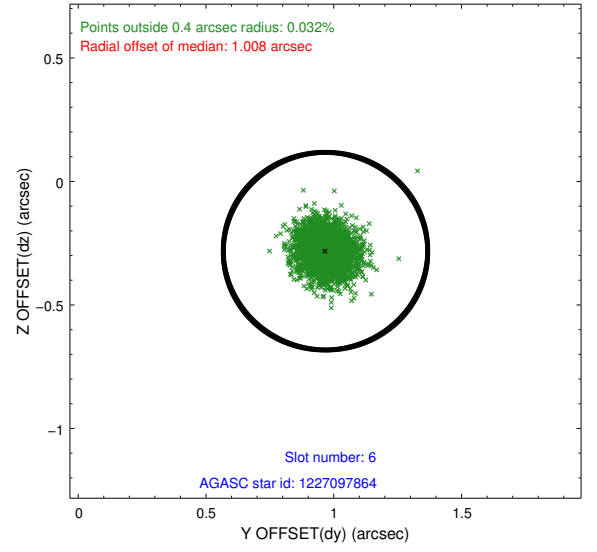
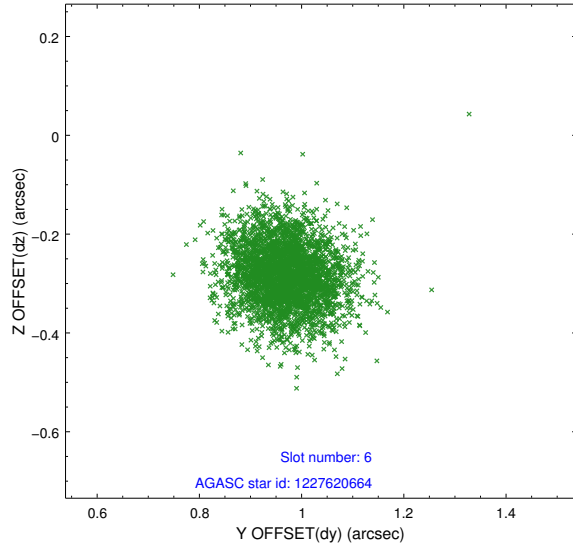
## 2.4.2 Slot 4



### 2.4.3 Slot 5

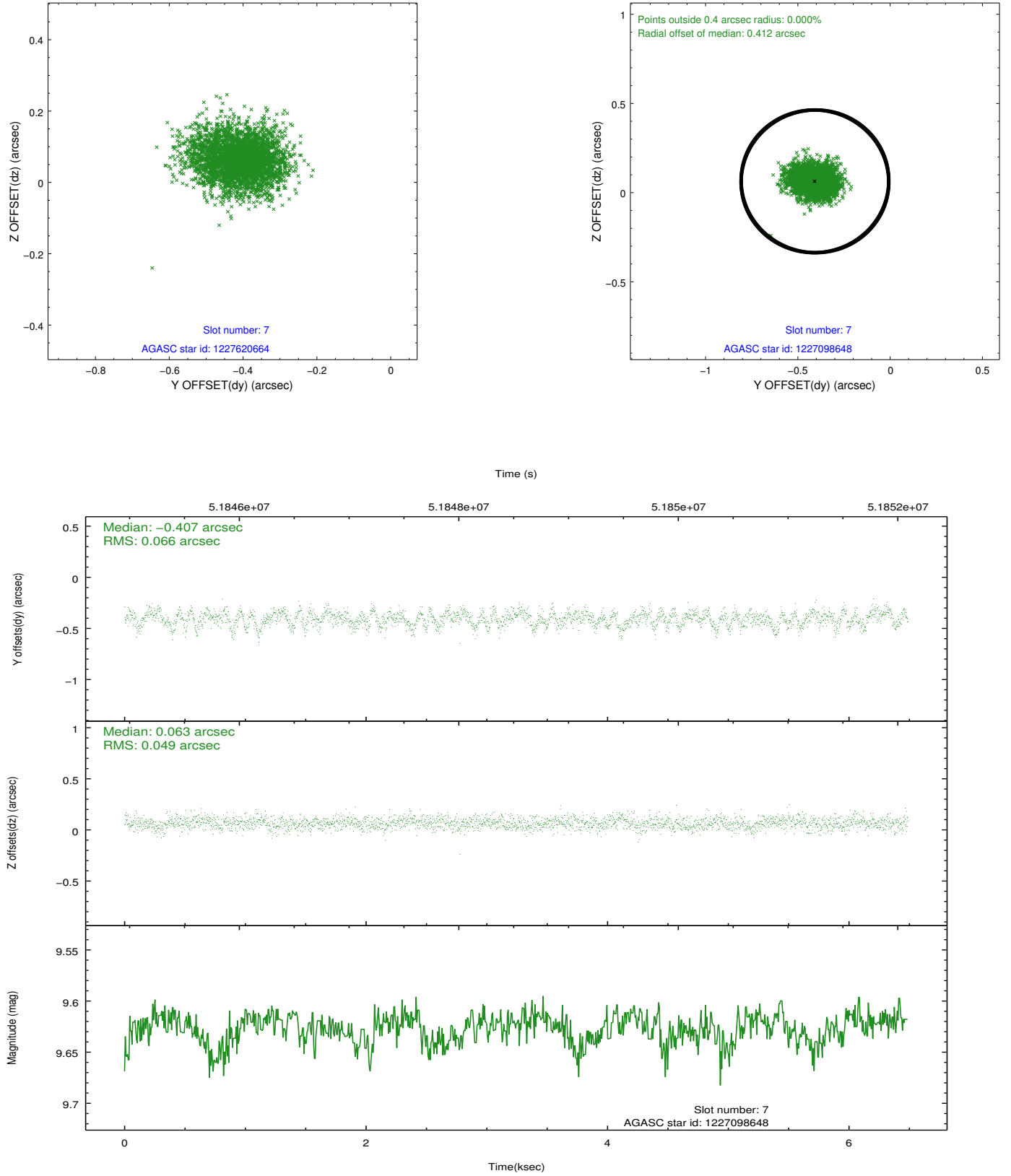


## 2.4.4 Slot 6



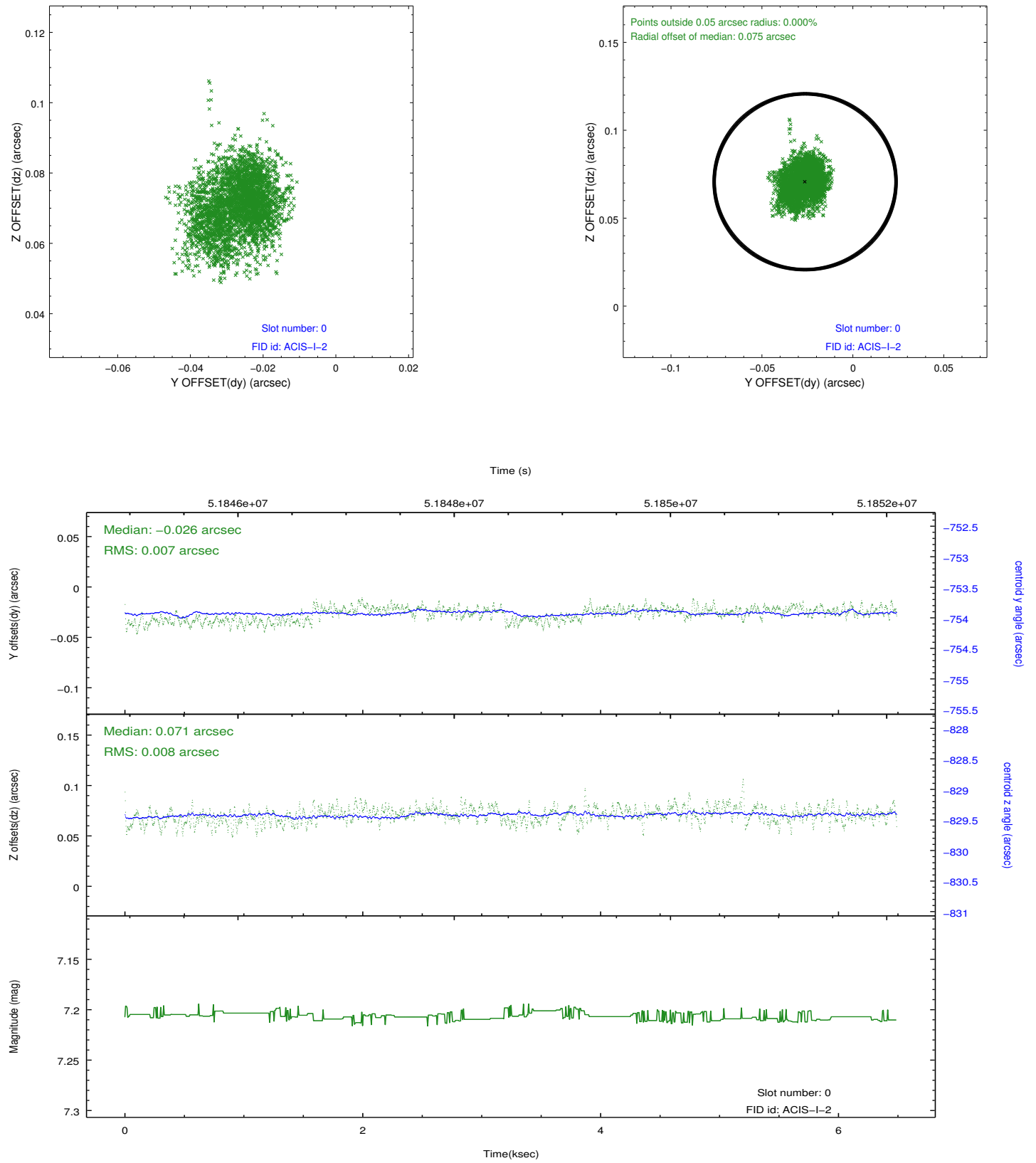


## 2.4.5 Slot 7

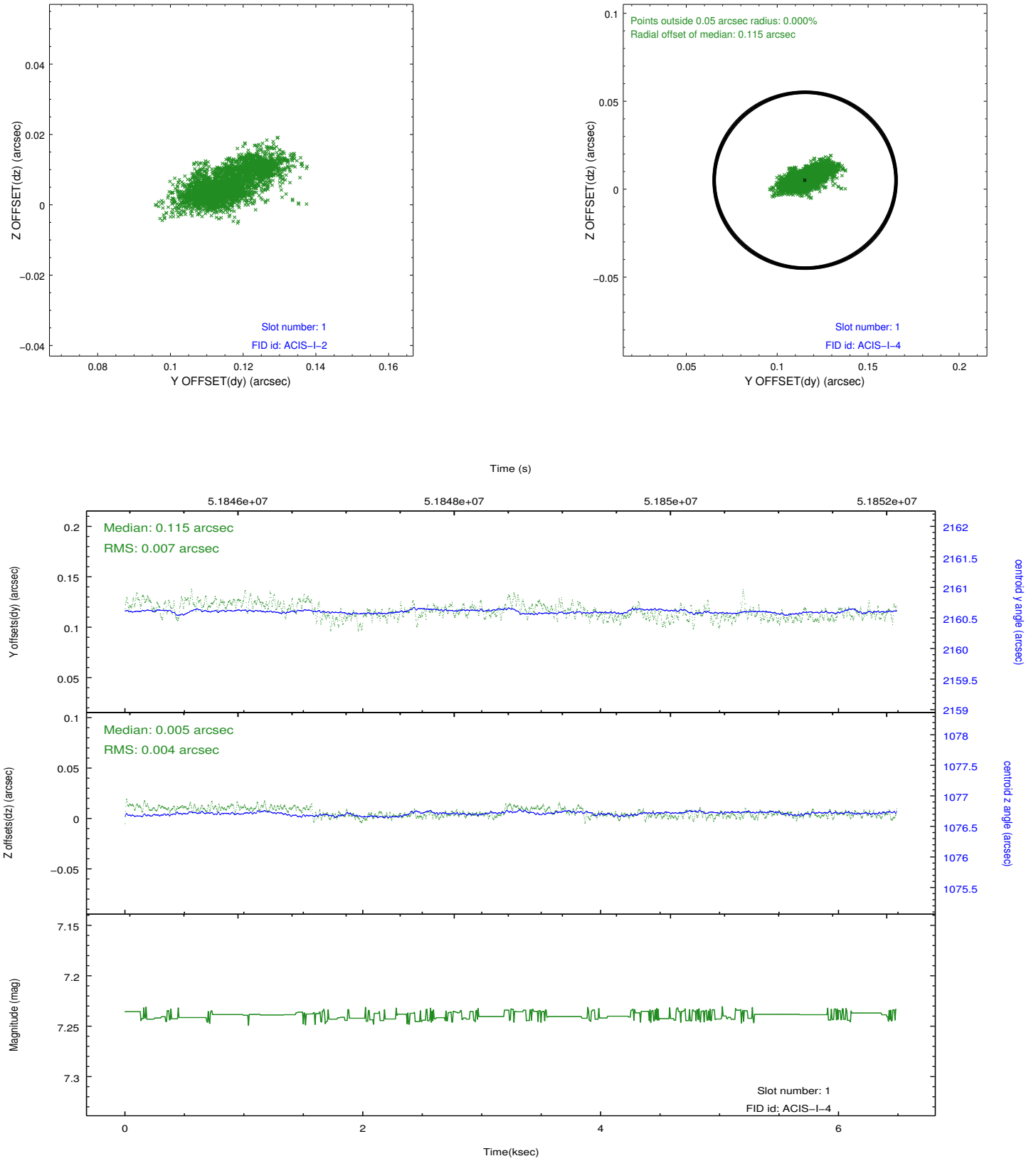


## 2.5 FID Slots

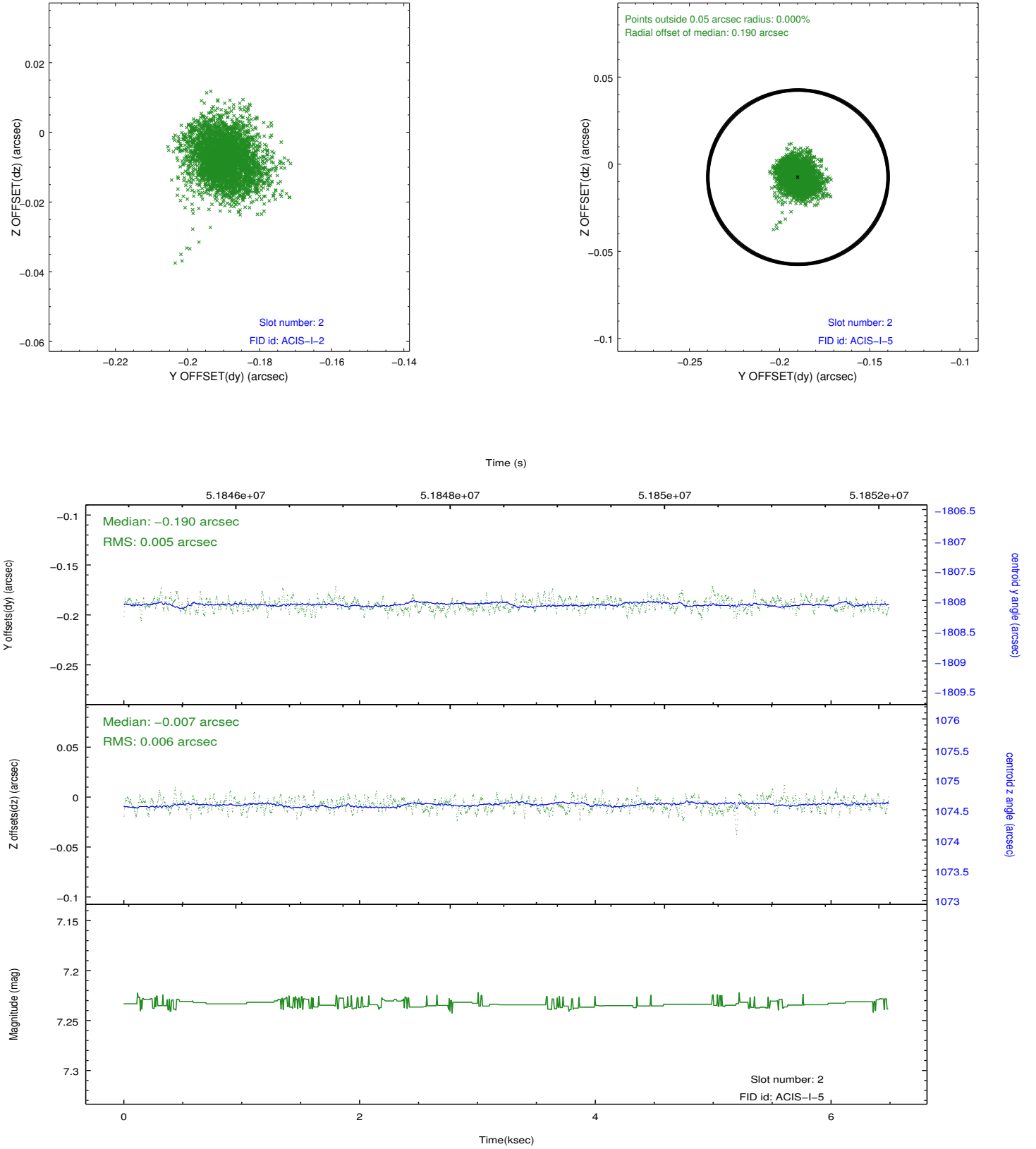
### 2.5.1 Slot 0



## 2.5.2 Slot 1



### 2.5.3 Slot 2



### 3 Point Sources

# A Summary

## A.1 Status

V&V Scientist	Joy Nichols
V&V Date (YYYY-MM-DD)	2010.01.21
V&V Edition	1
V&V Disposition and Status	OK
V&V Charge Time	5.825

## A.2 Comments

There was an incorrect boresight alignment calculation for this obsid.  
The pointing is therefore inaccurate and not of the intended field.

=====

Charge time for this ObsId remains at previous value of 5.825 ksec,  
although  
with the current processing the charge time would have been 5.895 ksec.

=====

Focal plane temperature is approximately -100 C degrees during this  
observation. ACIS has not been calibrated at this temperature, because  
the focal plan temperature of -119.7 C degrees became the standard  
shortly

after the start of the mission. Both front and back illuminated chips  
are affected.

The ACIS spectral response calibration is less accurate at these warmer  
temperatures than it is at -119.7 C. Users whose science objectives  
depend

on the most accurate spectral response (ie: fitting line-rich spectra)  
may

notice an effect. Users whose science objectives do not depend on the  
most accurate spectral response should not notice an effect.

This reprocessing

of the data applies no CTI correction because none is available  
for this temperature.