

# V&V Reference Report

## L2 ASCDS Version : 8.2.1

Observation 1105 - L2 Version 2

Chandra X-Ray Center

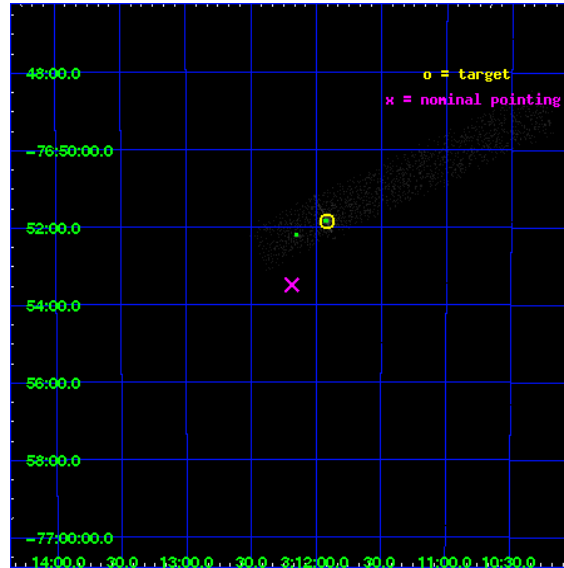
L2 Processing Date : Jan 13 2010

## Contents

<b>1</b>	<b>Front</b>	<b>2</b>
<b>2</b>	<b>OBI</b>	<b>3</b>
2.1	OBI . . . . .	3
2.1.1	Images . . . . .	3
2.1.2	Bias . . . . .	3
2.1.3	Parameters . . . . .	4
2.1.4	Events . . . . .	4
2.2	Compared Parameters . . . . .	5
2.3	Aspect . . . . .	6
2.4	Star Slots . . . . .	9
2.4.1	Slot 3 . . . . .	9
2.4.2	Slot 4 . . . . .	10
2.4.3	Slot 5 . . . . .	11
2.4.4	Slot 6 . . . . .	12
2.4.5	Slot 7 . . . . .	13
2.5	FID Slots . . . . .	14
2.5.1	Slot 0 . . . . .	14
2.5.2	Slot 1 . . . . .	15
2.5.3	Slot 2 . . . . .	16
<b>3</b>	<b>Point Sources</b>	<b>17</b>
<b>A</b>	<b>Summary</b>	<b>18</b>
A.1	Status . . . . .	18
A.2	Comments . . . . .	18

# 1 Front

seq_num	780055	Sequence number
obs_id	1105	Observation id
title	&#160	Proposal title
observer	Dr. CXC Calibration	Principal investigator
object	PKS0312-770	Source name
dtcycle	0	&#160
cycle	P	events from which exps? Prim/Second/Both
ra_targ	47.98	Observer's specified target RA
dec_targ	-76.864167	Observer's specified target Dec
ra_nom	48.046808448105	Nominal RA
dec_nom	-76.891698839932	Nominal Dec
roll_nom	64.564313345714	Nominal Roll
revision	2	Processing version of data
ontime	13892.790072031	Sum of GTIs [s]
livetime	12838.967610557	Livetime [s]
ontime2	13892.790072031	Sum of GTIs [s]
l2events	9512	Number of level 2 events

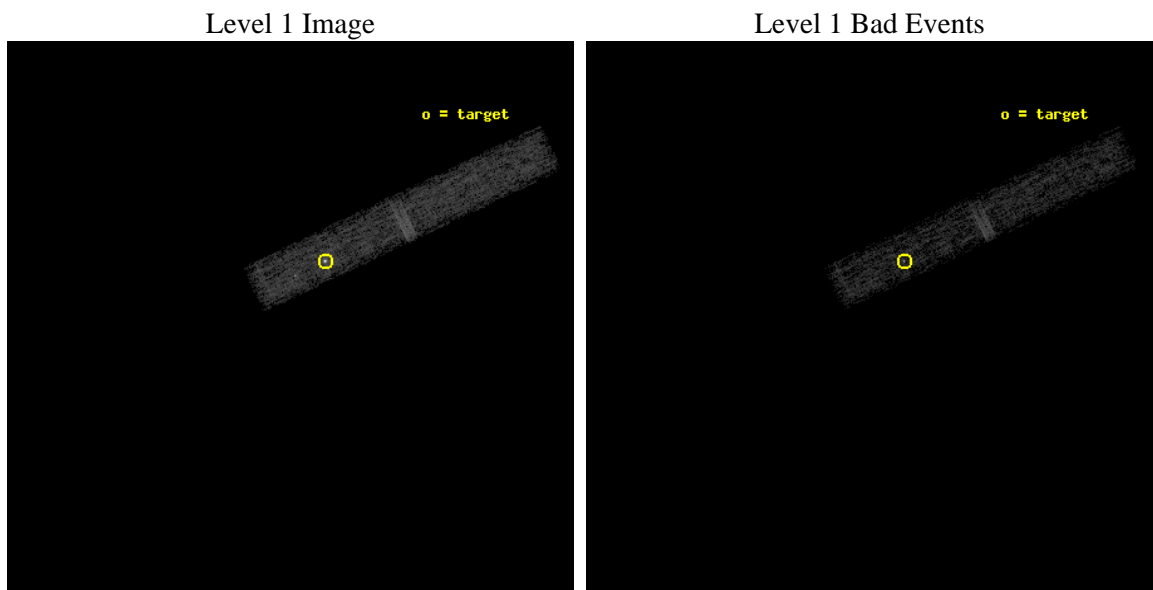




## 2 OBI

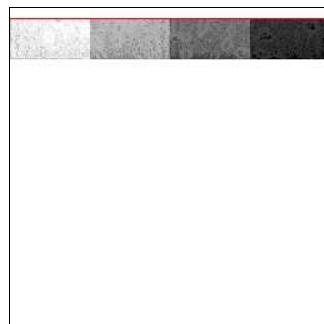
### 2.1 OBI

#### 2.1.1 Images



#### 2.1.2 Bias

Chip 2



### 2.1.3 Parameters

obi_num	0	Obi number	sched_exp_time	14000.000000	Scheduled observation exposure time
ascdsver	8.2.1	ASCDS version number	ontime	13892.790072031	Sum of GTIs [s]
caldbver	4.1.5	&#160	ontime2	13892.790072031	Sum of GTIs [s]
date	2010-01-13T07:10:31	Date and time of file creation	ll events	40151	Number of level 1 events
revision	3	Processing version of data			

### 2.1.4 Events

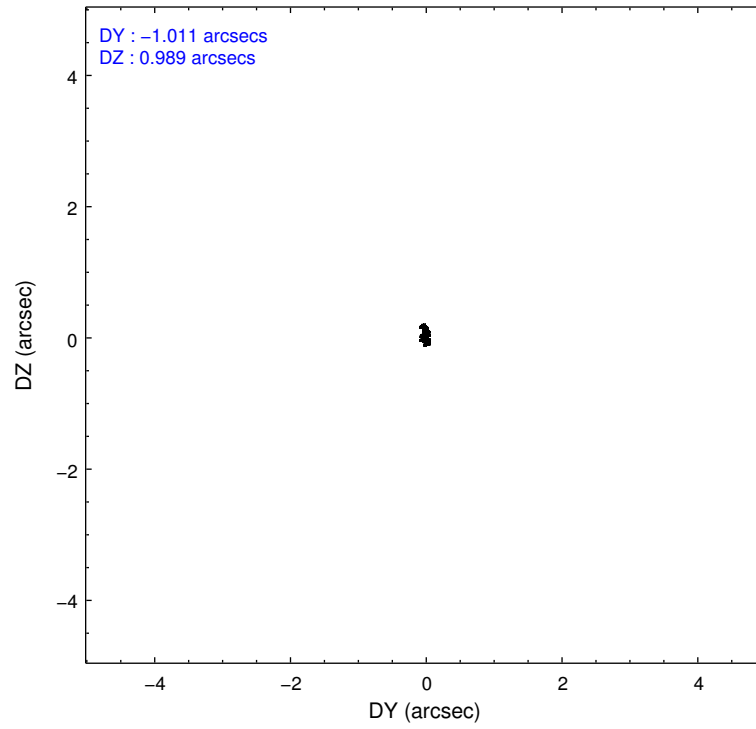
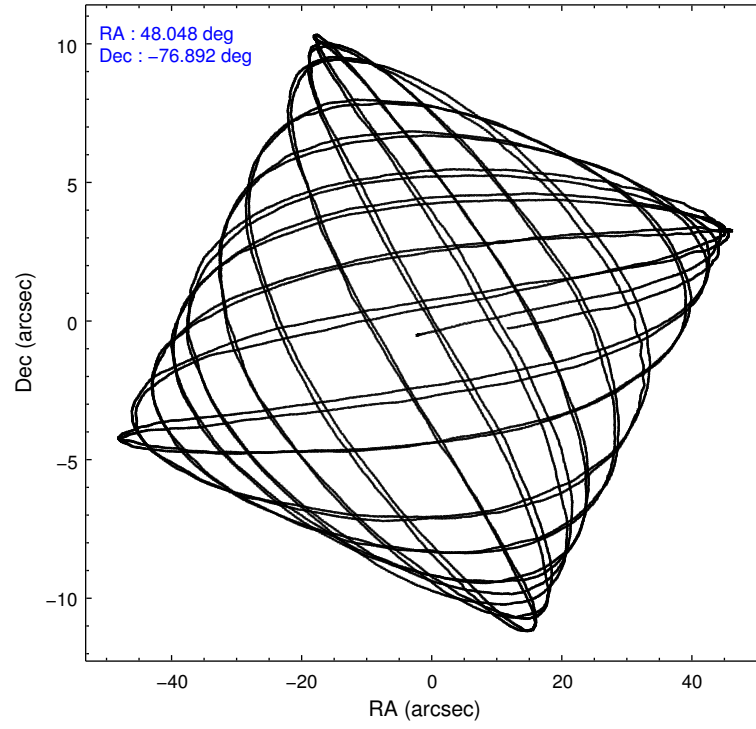
	<b>ccd 2</b>
level 1 events	40151
rejected events	29898
rejected %	74%

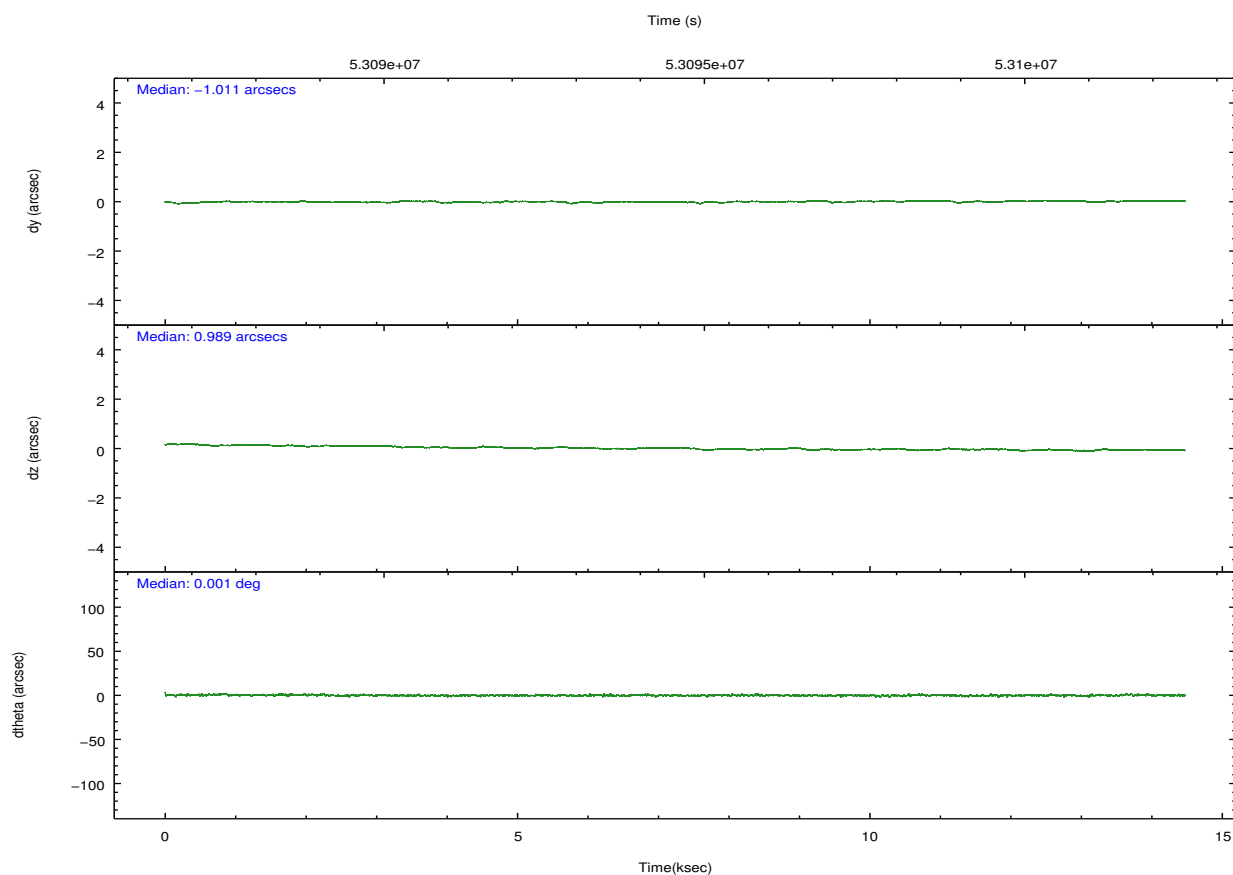
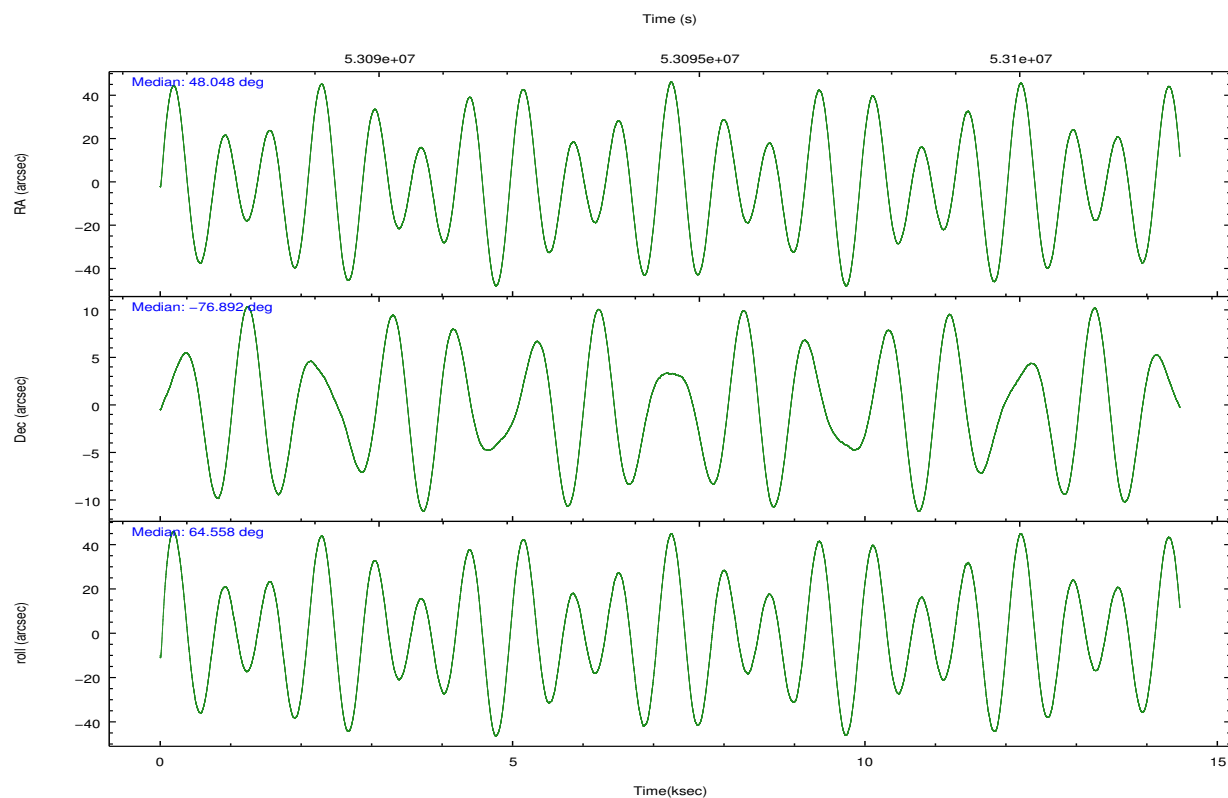
	<b>ccd 2</b>
grade 0 events	6267
	15%
grade 1 events	167
	0%
grade 2 events	1832
	4%
grade 3 events	706
	1%
grade 4 events	679
	1%
grade 5 events	378
	0%
grade 6 events	773
	1%
grade 7 events	29349
	73%

## 2.2 Compared Parameters

Parameter	Planned	Actual	Parameter	Planned	Actual
Instrument	ACIS	ACIS	Obspar format version number	6	6
Detector	ACIS-2	ACIS-2	Obspar file type	PREDICTED	ACTUAL
Grating	NONE	NONE	Obspar update status	NONE	UPDATED
Data mode	FAINT	FAINT	Number of optional ACIS chips dropped	0	0
Observation mode	POINTING	POINTING	On-chip summing requested	N	N
Pointing RA	48.053507	48.04680844810525	Subarray requested	CUSTOM	1/8
Pointing Dec	-76.919506	-76.8916988399321	Subarray start row	864	864
Pointing Roll	64.362147	64.5643133457136	Subarray row count	128	128
SIM focus pos (mm)	-0.782348	-0.7809083437167272	Alternating exposures requested	N	N
SIM defocus (mm)	0	0.001439871863259334	Primary exposure time	0.000000	0.5
SIM translation stage pos (mm)	-233.592463	-233.5874344608287			
SIM translation stage offset (mm)	0	-0.005018542100998502			
Observation start time	53087778.184000	53087112.257288			
Observation start date	1999-09-07T10:35:14	1999-09-07T10:25:12			
Observation end time	53101778.184000	53102666.632846			
Observation end date	1999-09-07T14:28:34	1999-09-07T14:44:26			
Read mode	TIMED	TIMED			

## 2.3 Aspect



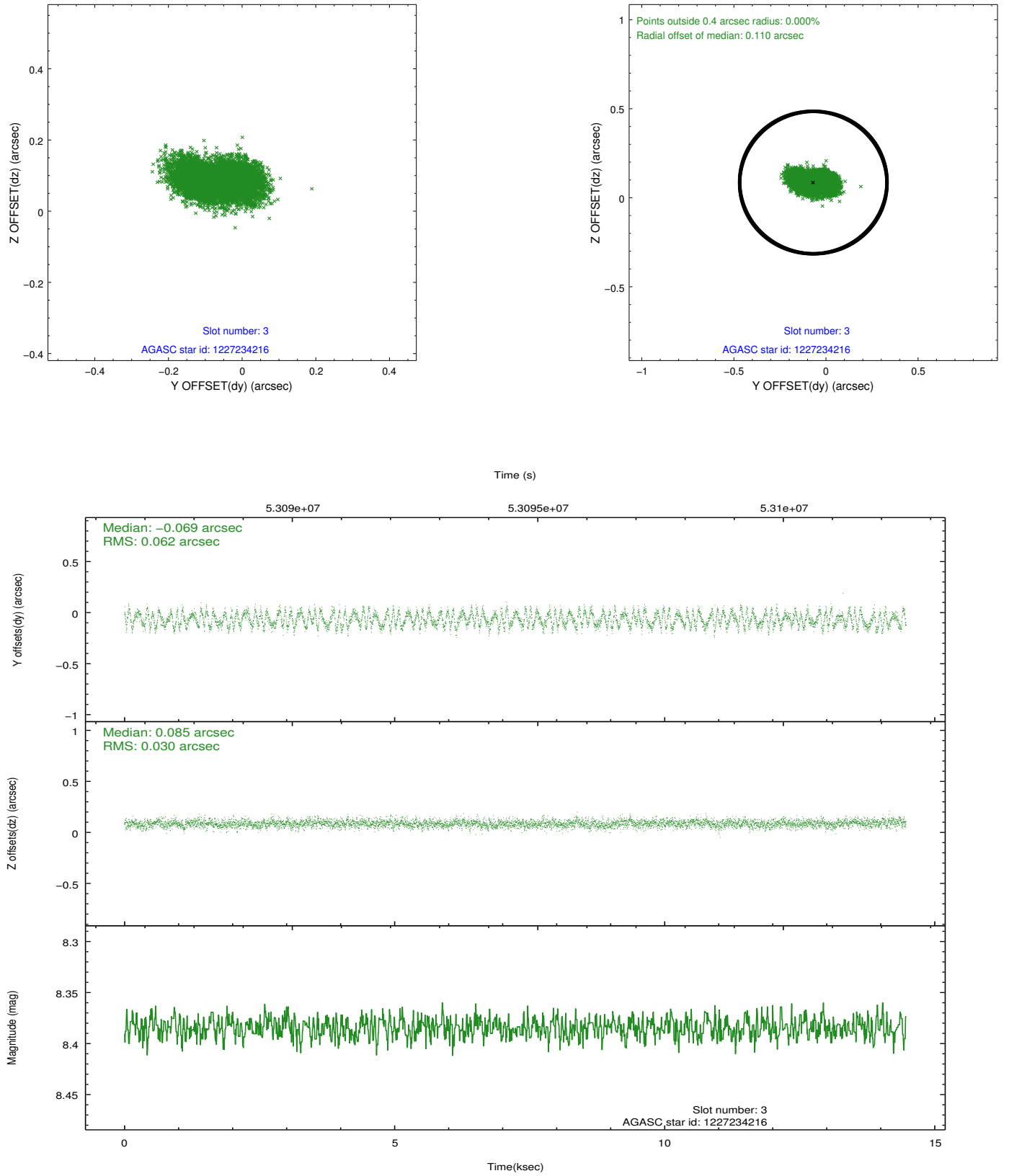


Slot Statistics

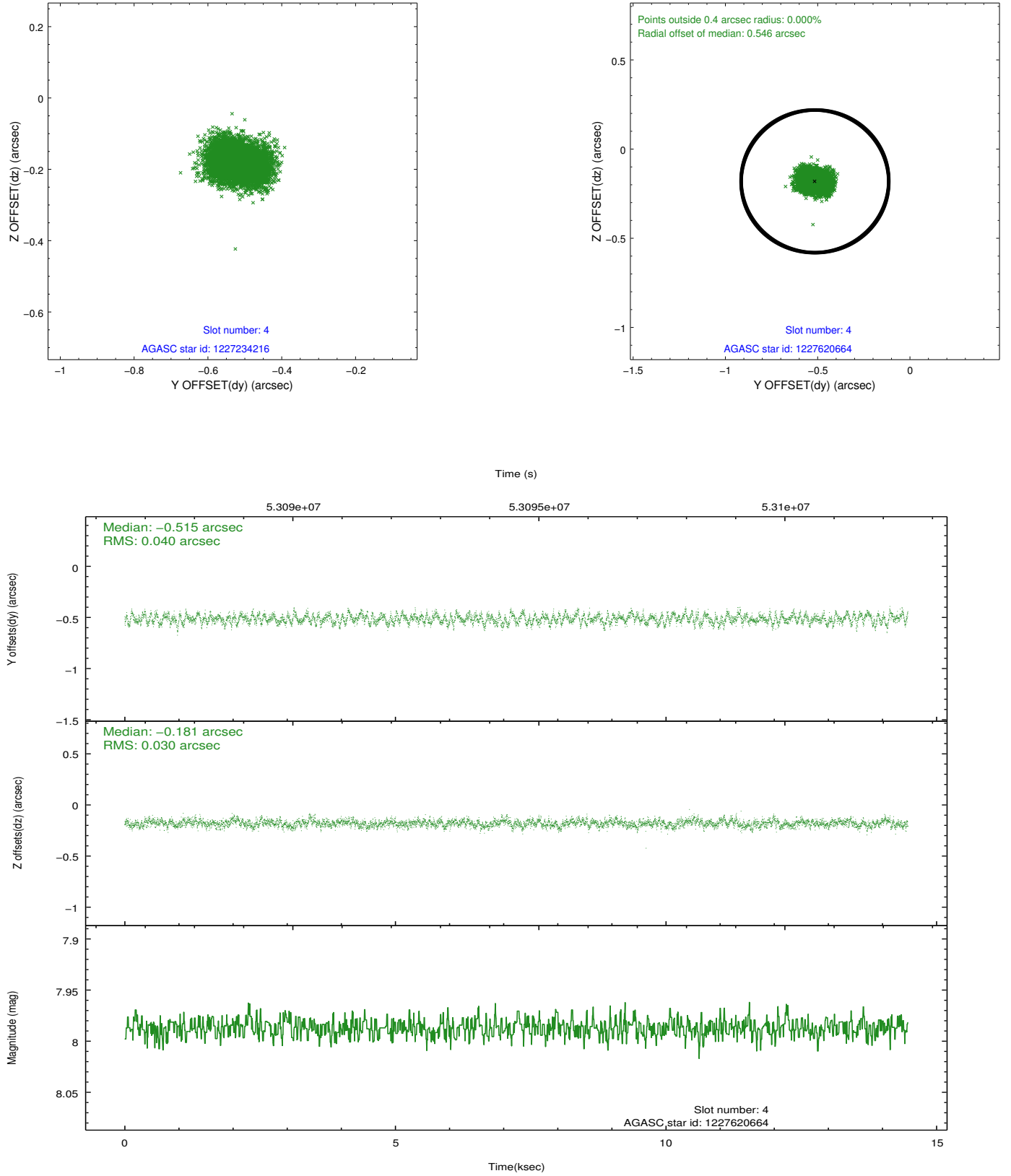
slot	status	id	mag	n_pts	med_dy	med_dz	dr1	dr2	ra	dec	mean_y	mean_z
0	FID	ACIS-I-2	7.21	7058	-0.047	0.032	0.009	0.016	0.000000	0.000000	-753.35	-830.52
1	FID	ACIS-I-4	7.23	7056	0.125	0.026	0.006	0.012	0.000000	0.000000	2160.96	1075.43
2	FID	ACIS-I-5	7.23	7057	-0.178	0.011	0.009	0.015	0.000000	0.000000	-1807.09	1073.60
3	GUIDE	1227234216	8.38	7054	-0.069	0.085	0.075	0.118	51.506981	-76.616205	2152.90	-2156.09
4	GUIDE	1227620664	7.99	7056	-0.515	-0.181	0.053	0.087	46.150563	-77.166043	-1481.11	977.04
5	GUIDE	1227629440	9.11	7052	-0.127	-0.022	0.063	0.103	48.268116	-77.028500	-279.44	-325.48
6	GUIDE	1227104240	9.80	7053	-0.125	0.183	0.092	0.148	48.955462	-76.524572	1603.64	-68.43
7	GUIDE	1227097864	9.92	7045	0.837	-0.065	0.089	0.149	46.669937	-76.763312	2.22	1266.23

## 2.4 Star Slots

### 2.4.1 Slot 3

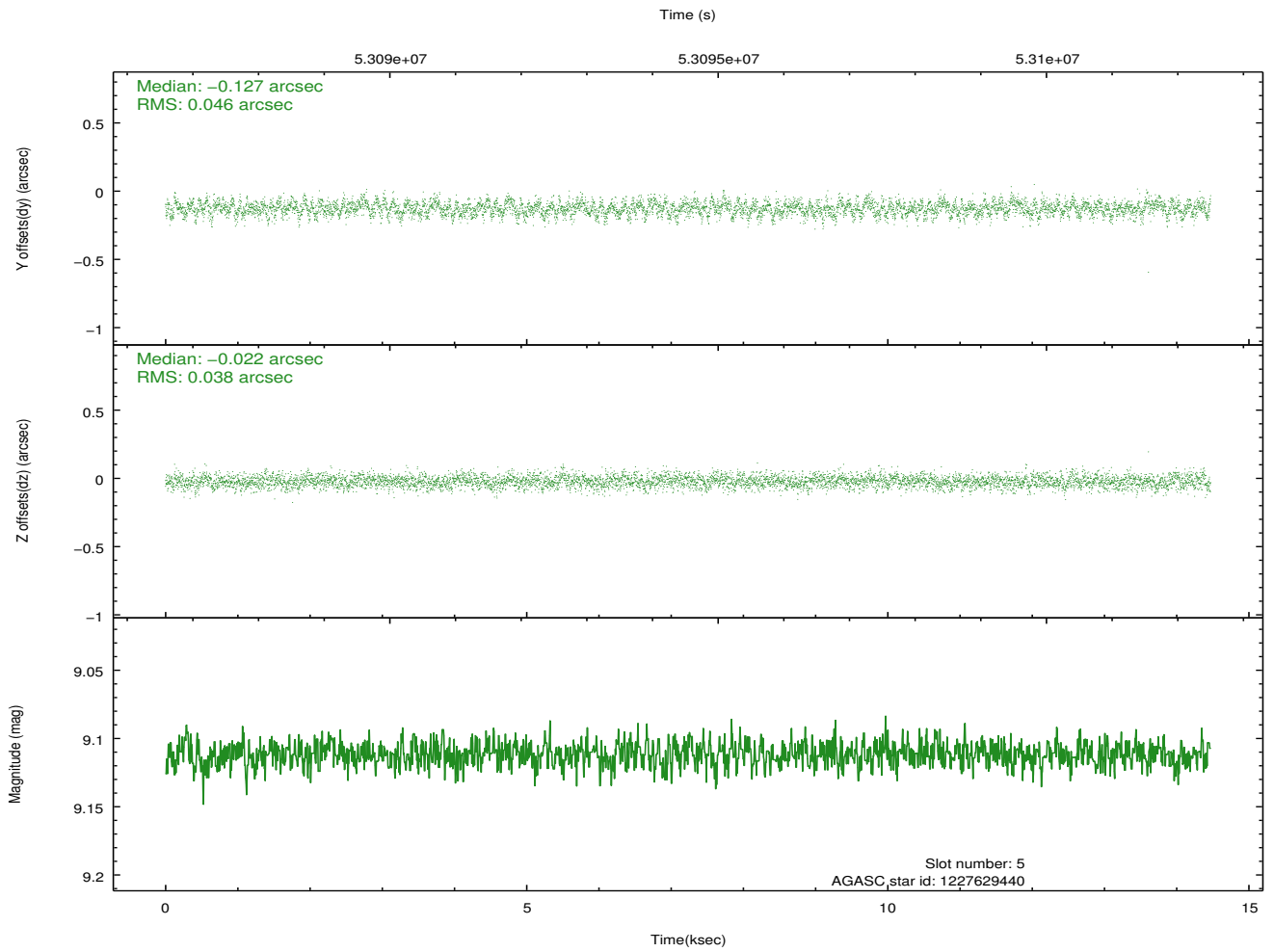
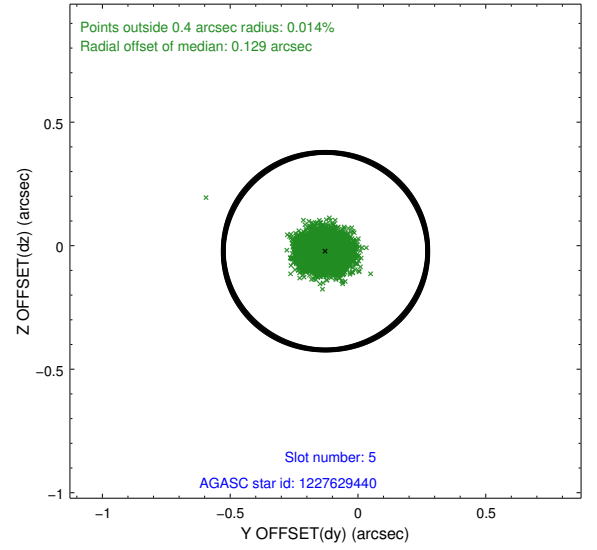
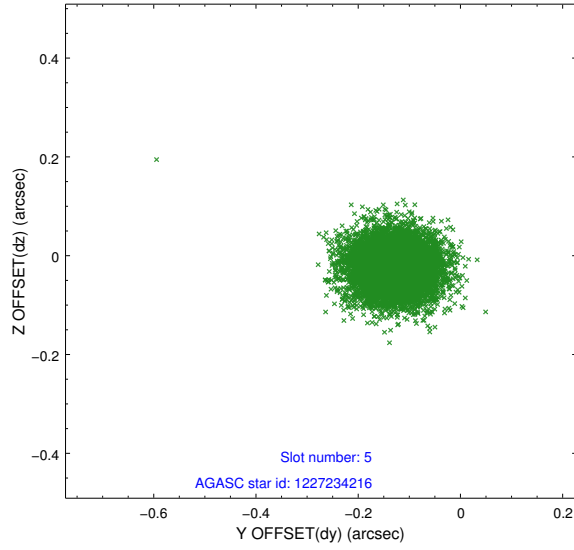


## 2.4.2 Slot 4

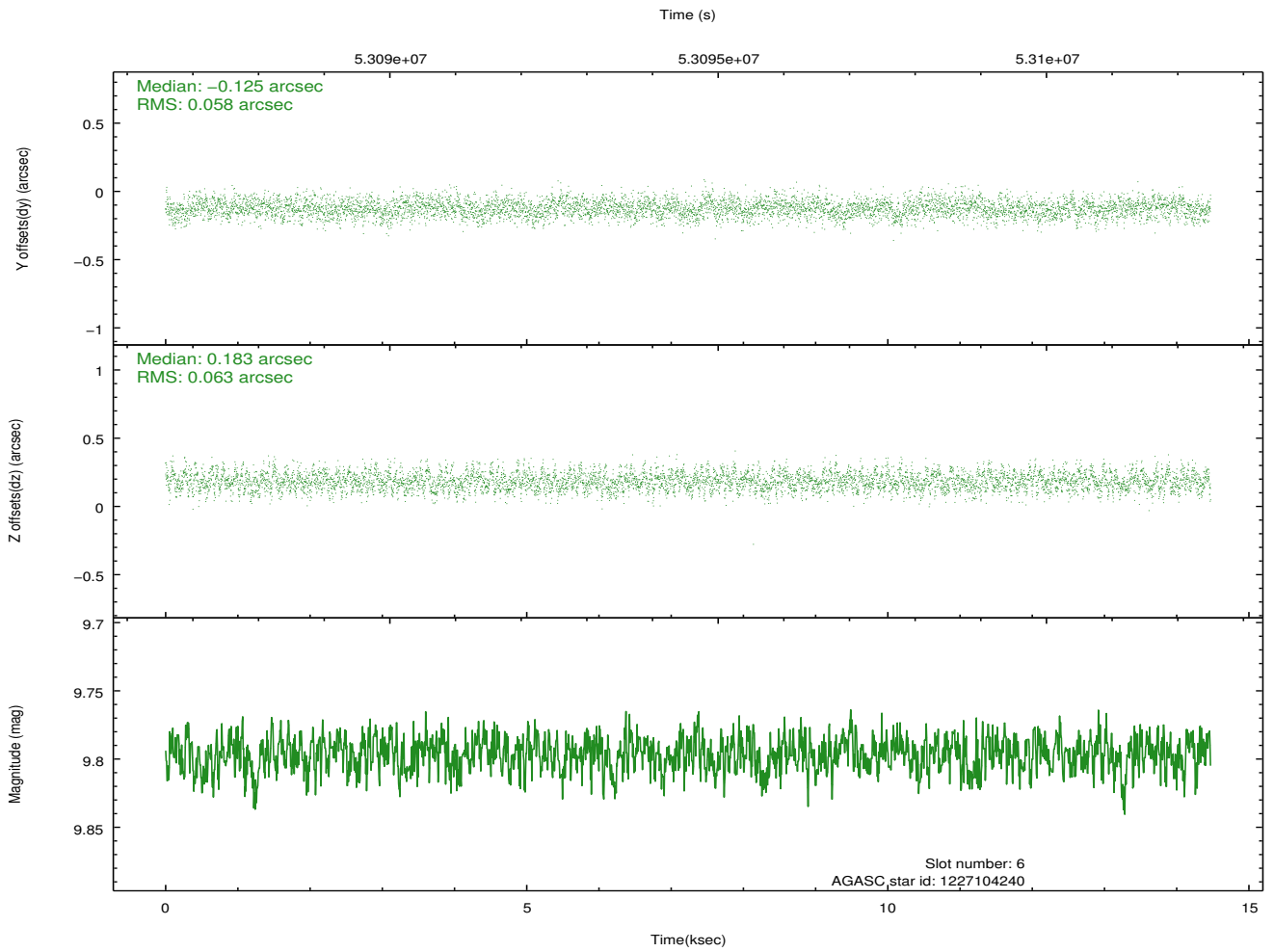
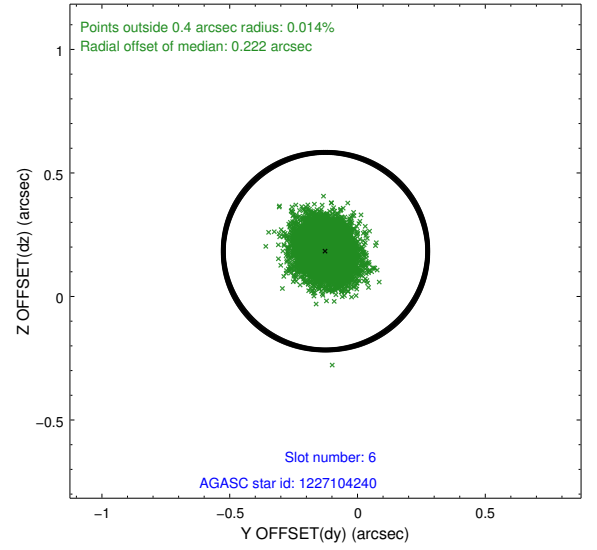
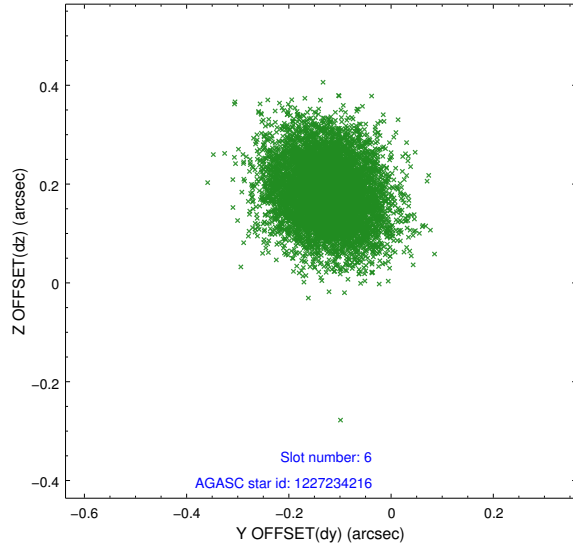




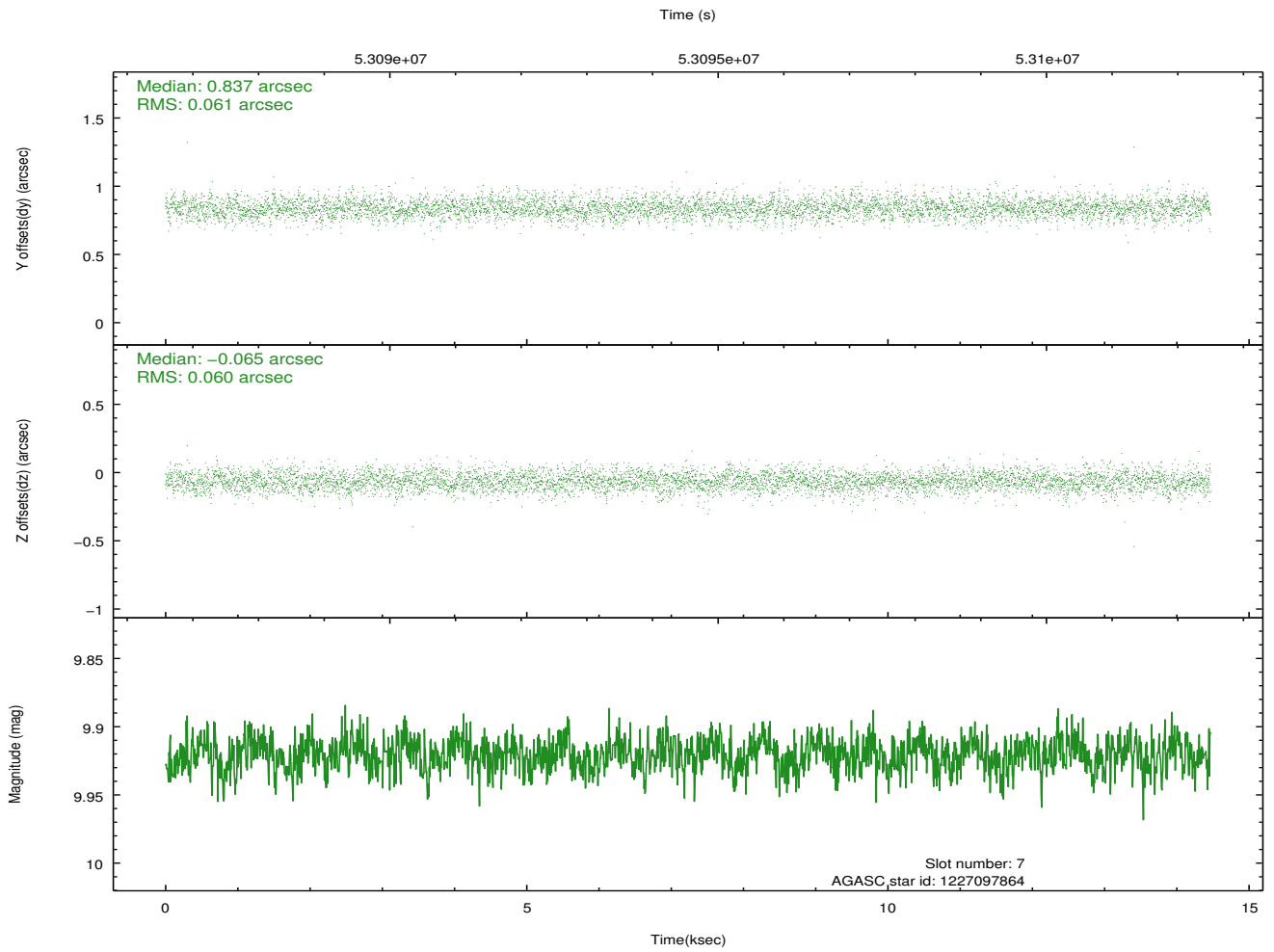
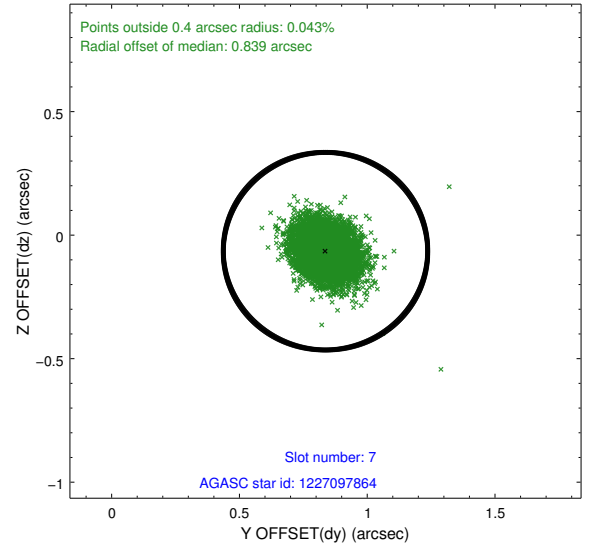
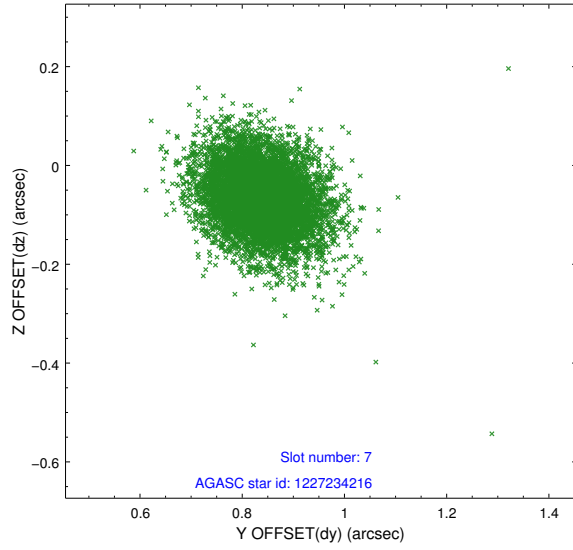
### 2.4.3 Slot 5



## 2.4.4 Slot 6

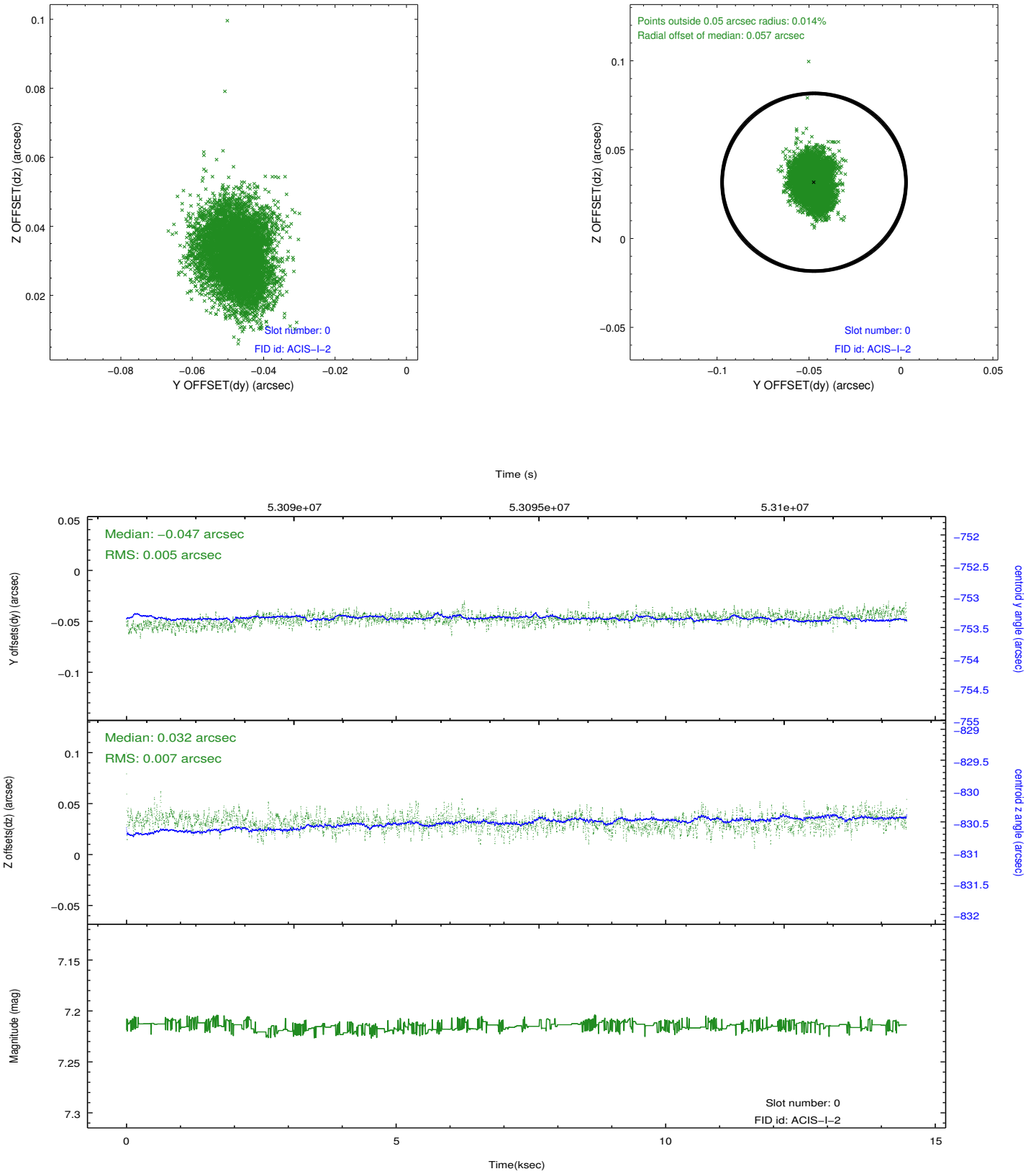


## 2.4.5 Slot 7

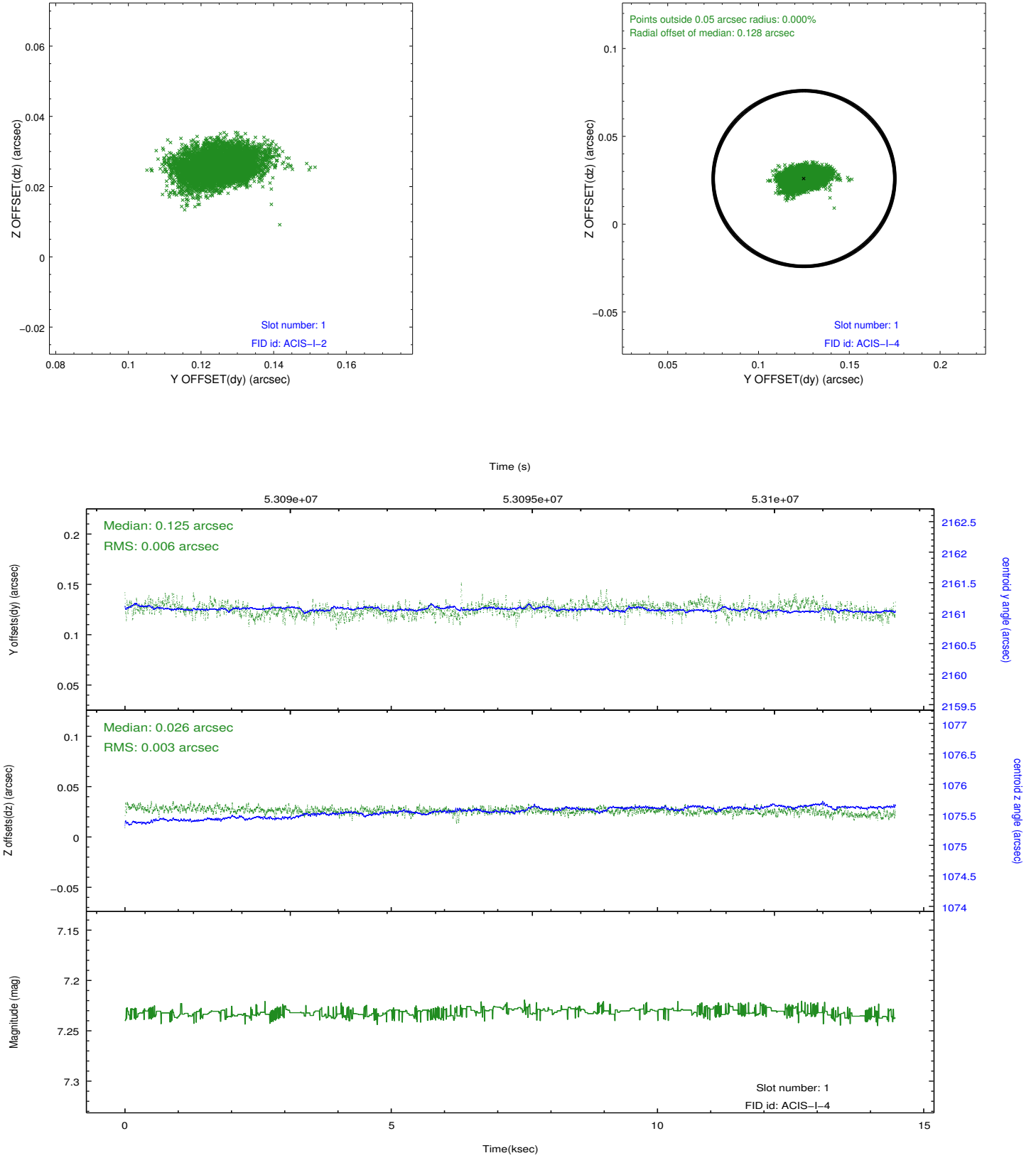


## 2.5 FID Slots

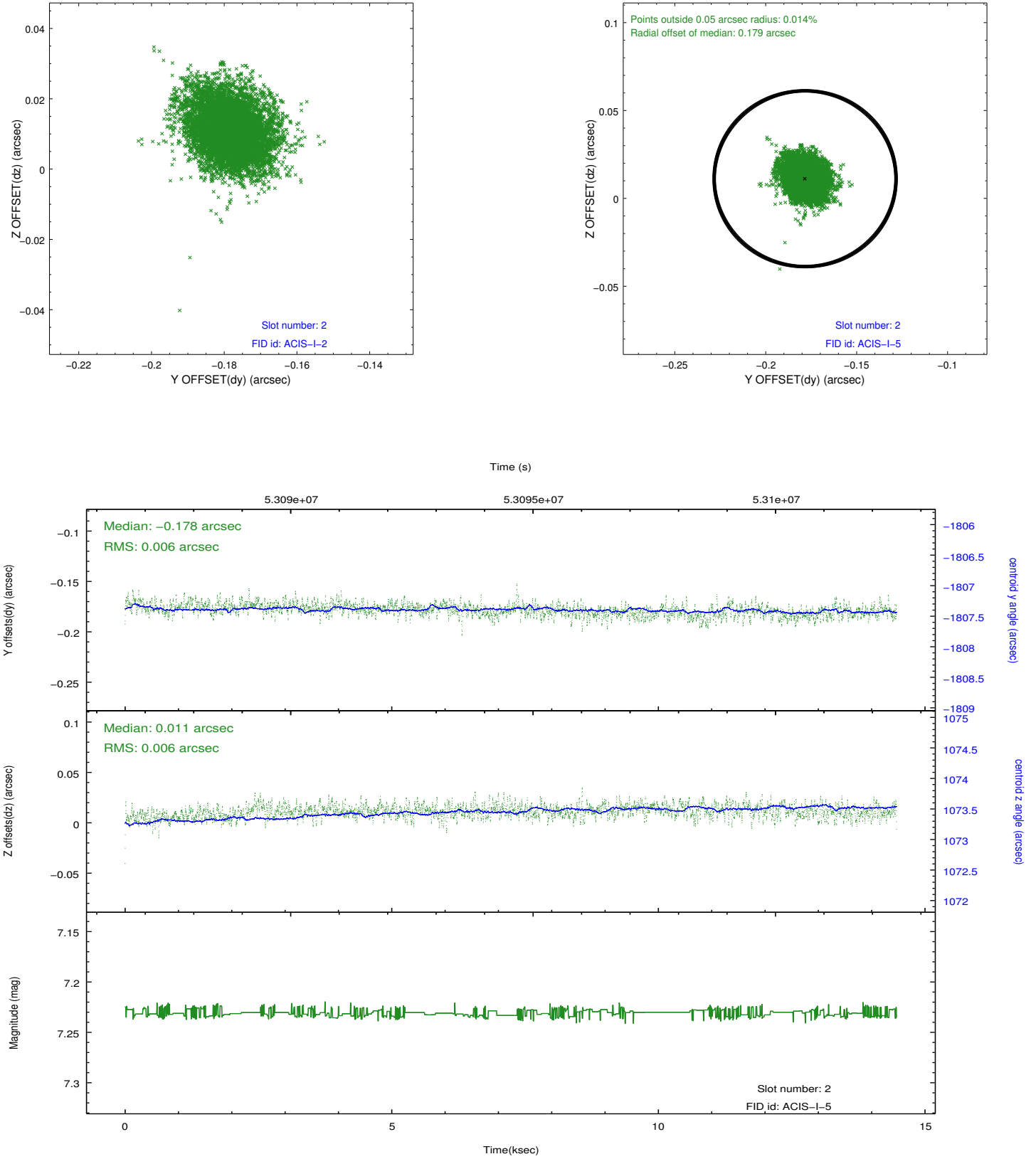
### 2.5.1 Slot 0



## 2.5.2 Slot 1



### 2.5.3 Slot 2



### 3 Point Sources

# A Summary

## A.1 Status

V&V Scientist	Joy Nichols
V&V Date (YYYY-MM-DD)	2010.07.29
V&V Edition	1
V&V Disposition and Status	OK
V&V Charge Time	13.893

## A.2 Comments

ACIS off-axis PSF measurement. Target is on chip I2.

===

The focal plane temperature is approximately -100 C during this observation. This reprocessing of the data applies no CTI correction because none is available for this temperature at present.

The ACIS CTI correction has not been calibrated at this temperature, because it was early in the mission, and ACIS had not yet been lowered to the standard -119.7 C. Both front and back illuminated chips are affected. However a T\_GAIN correction has been applied to the BI chips (ACIS-5 and ACIS-7) data included here.

The ACIS spectral response calibration is less accurate at these warmer temperatures than it is at -119.7 C. Users whose science objectives depend on the most accurate spectral response (ie: fitting line-rich spectra) may notice an effect. Users whose science objectives do not depend on the most accurate spectral response should not notice an effect.