

# V&V Reference Report

## L2 ASCDS Version : 8.2.1

Observation 1297 - L2 Version 3

Chandra X-Ray Center

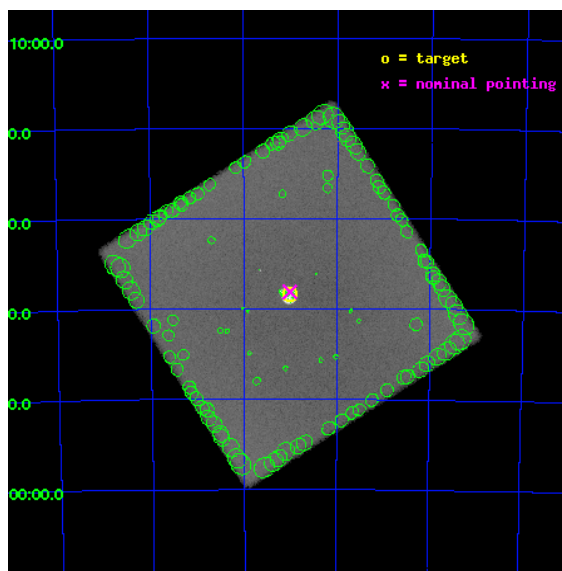
L2 Processing Date : Jul 9 2010

## Contents

<b>1</b>	<b>Front</b>	<b>2</b>
<b>2</b>	<b>OBI</b>	<b>3</b>
2.1	OBI . . . . .	3
2.1.1	Images . . . . .	3
2.1.2	Parameters . . . . .	4
2.1.3	Events . . . . .	4
2.2	Compared Parameters . . . . .	5
2.3	Aspect . . . . .	6
2.4	Star Slots . . . . .	9
2.4.1	Slot 3 . . . . .	9
2.4.2	Slot 4 . . . . .	10
2.4.3	Slot 5 . . . . .	11
2.4.4	Slot 6 . . . . .	12
2.4.5	Slot 7 . . . . .	13
2.5	FID Slots . . . . .	14
2.5.1	Slot 1 . . . . .	14
2.5.2	Slot 2 . . . . .	15
<b>3</b>	<b>Point Sources</b>	<b>16</b>
<b>A</b>	<b>Summary</b>	<b>17</b>
A.1	Status . . . . .	17
A.2	Comments . . . . .	17

# 1 Front

seq_num	580247	Sequence number
obs_id	1297	Observation id
title	ACIS CHIP RESPONSE TO LINES WITH E=0.6-1.5 KEV	Proposal title
observer	Dr. CXC Calibration	Principal investigator
object	N132D	Source name
ra_targ	81.25	Observer's specified target RA
dec_targ	-69.64	Observer's specified target Dec
ra_nom	81.253040463153	Nominal RA
dec_nom	-69.63521760151	Nominal Dec
roll_nom	102.68034784509	Nominal Roll
revision	3	Processing version of data
ontime	18069.981899031	[s]
livetime	17730.189492755	Ontime multiplied by DTCOR
l2events	1173990	Number of level 2 events

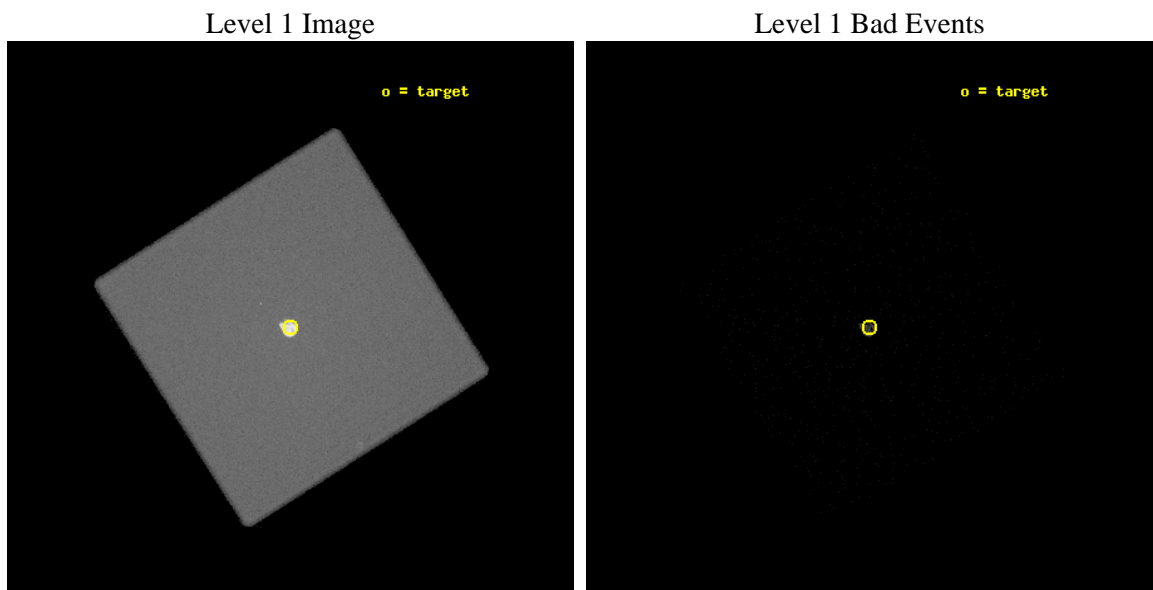




## 2 OBI

### 2.1 OBI

#### 2.1.1 Images



### 2.1.2 Parameters

obi_num	0	Obi number	sched_exp_time	10000.000000	Scheduled observation exposure time
ascdsver	8.2.1	Processing system revision	ontime	18069.981899031	[s]
caldbver	4.1.5	&#160	ll events	1932115	Number of level 1 events
date	2010-01-12T20:22:56	Date and time of file creation			
revision	3	Processing version of data			

### 2.1.3 Events

#### Level 1 Events

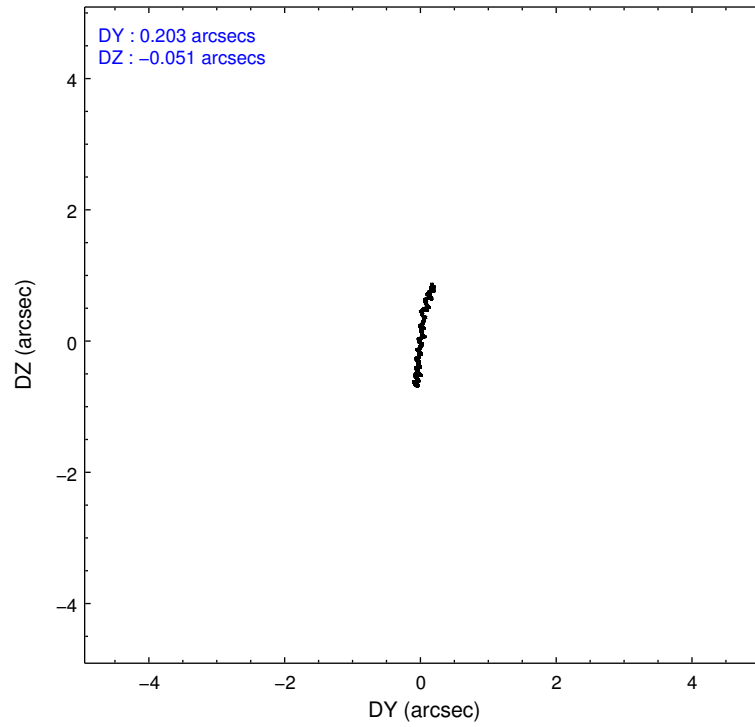
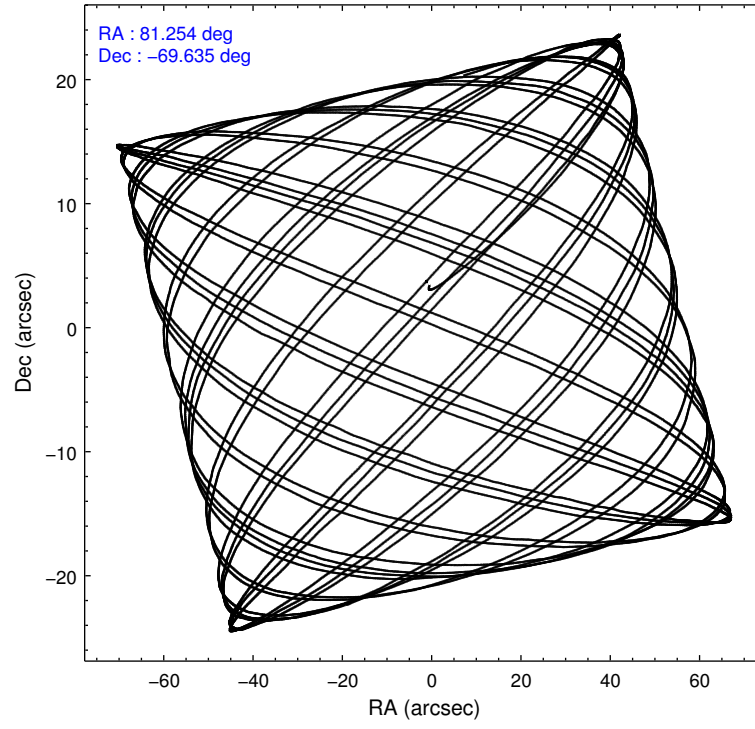
	<b>segment 0</b>
level 1 events	1932115
rejected events	9728
rejected %	0%

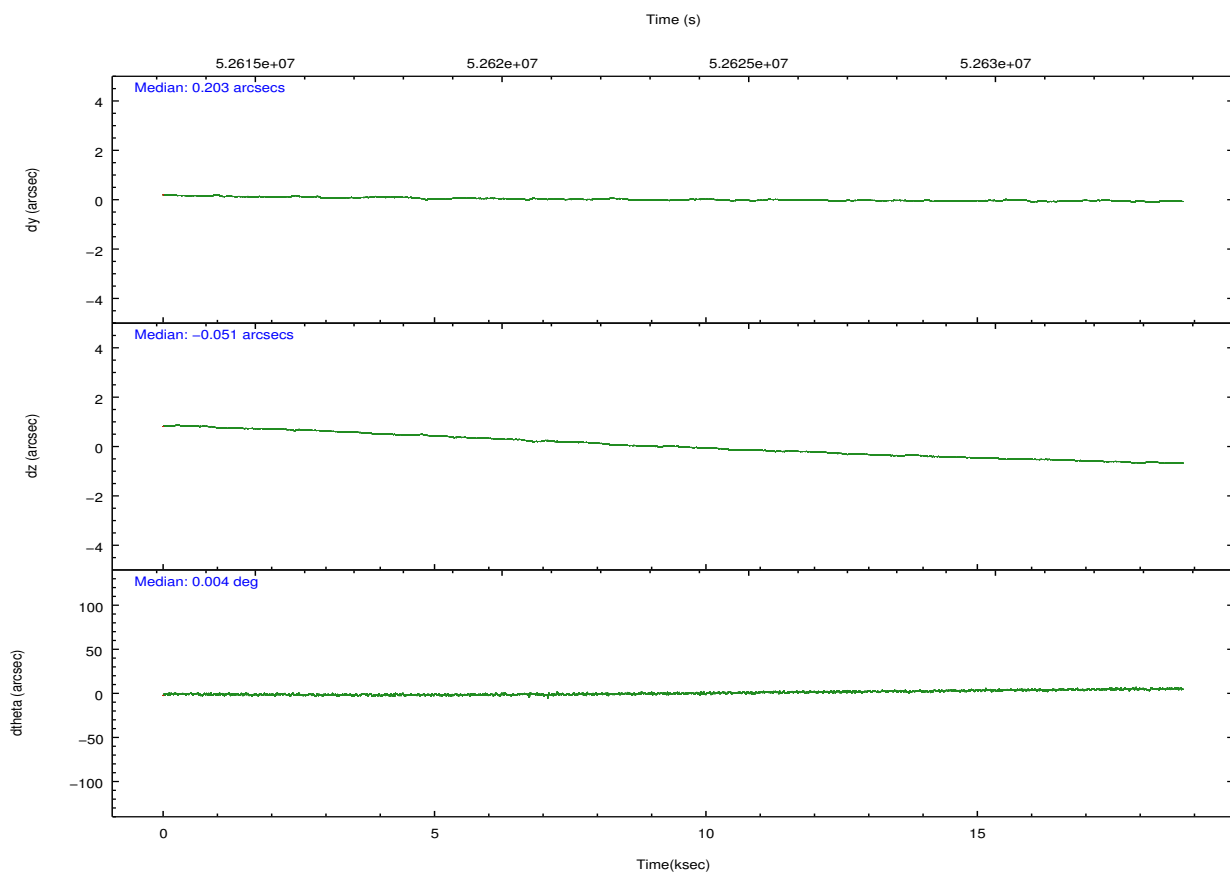
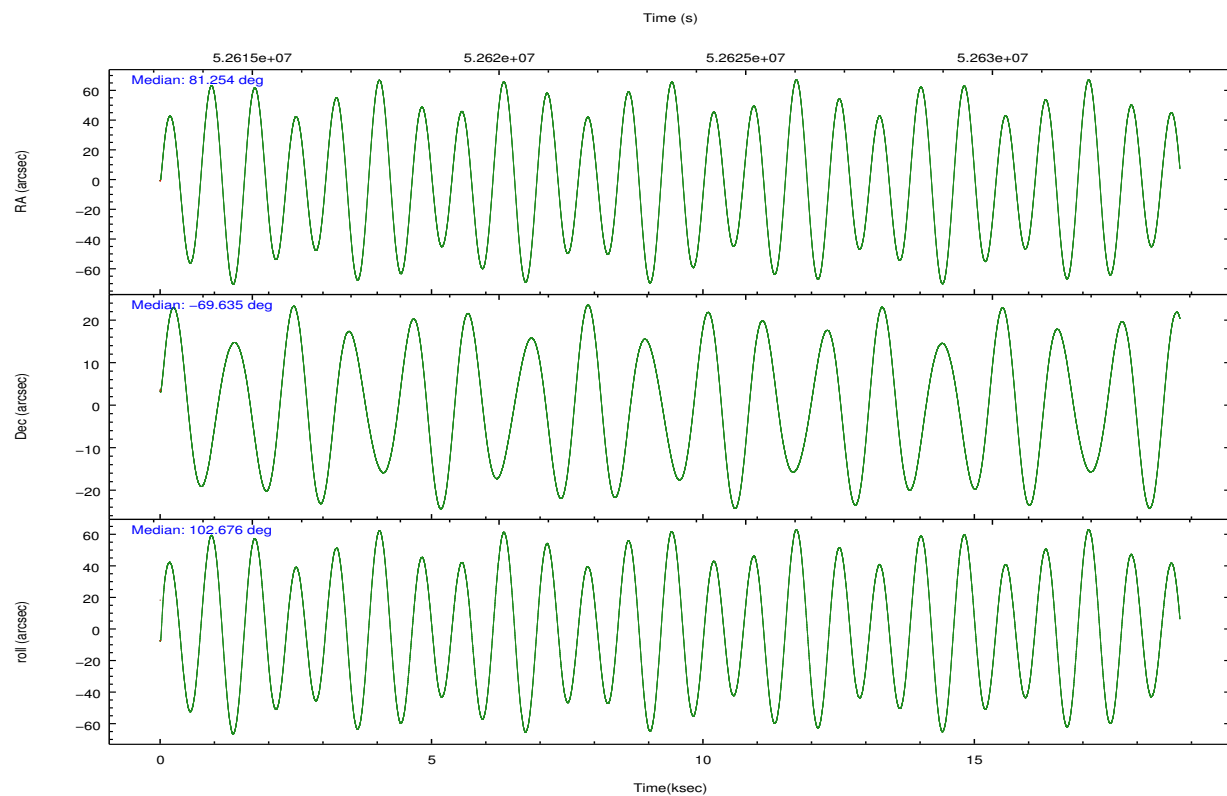
## 2.2 Compared Parameters

Parameter	Planned	Actual
Instrument	HRC	HRC
Detector	HRC-I	HRC-I
Grating	NONE	NONE
Data mode	OBSERVING	OBSERVING
Observation mode	POINTING	POINTING
Pointing RA	81.306249	81.25304046315267
Pointing Dec	-69.655378	-69.63521760151043
Pointing Roll	102.825739	102.6803478450926
SIM focus pos (mm)	-1.040293	-1.016036269358593
SIM defocus (mm)	0	0.02425635130028114
SIM translation stage pos (mm)	126.985494	126.9829799899862
SIM translation stage offset (mm)	0	0.002508901615314585
Observation start time	52614551.184000	52613633.477789
Observation start date	1999-09-01T23:08:07	1999-09-01T22:53:53
Observation end time	52632859.184000	52633736.803511
Observation end date	1999-09-02T04:13:15	1999-09-02T04:28:56

Parameter	Planned	Actual
Obspar format version number	6	6
Obspar file type	PREDICTED	ACTUAL
Obspar update status	NONE	UPDATED

## 2.3 Aspect



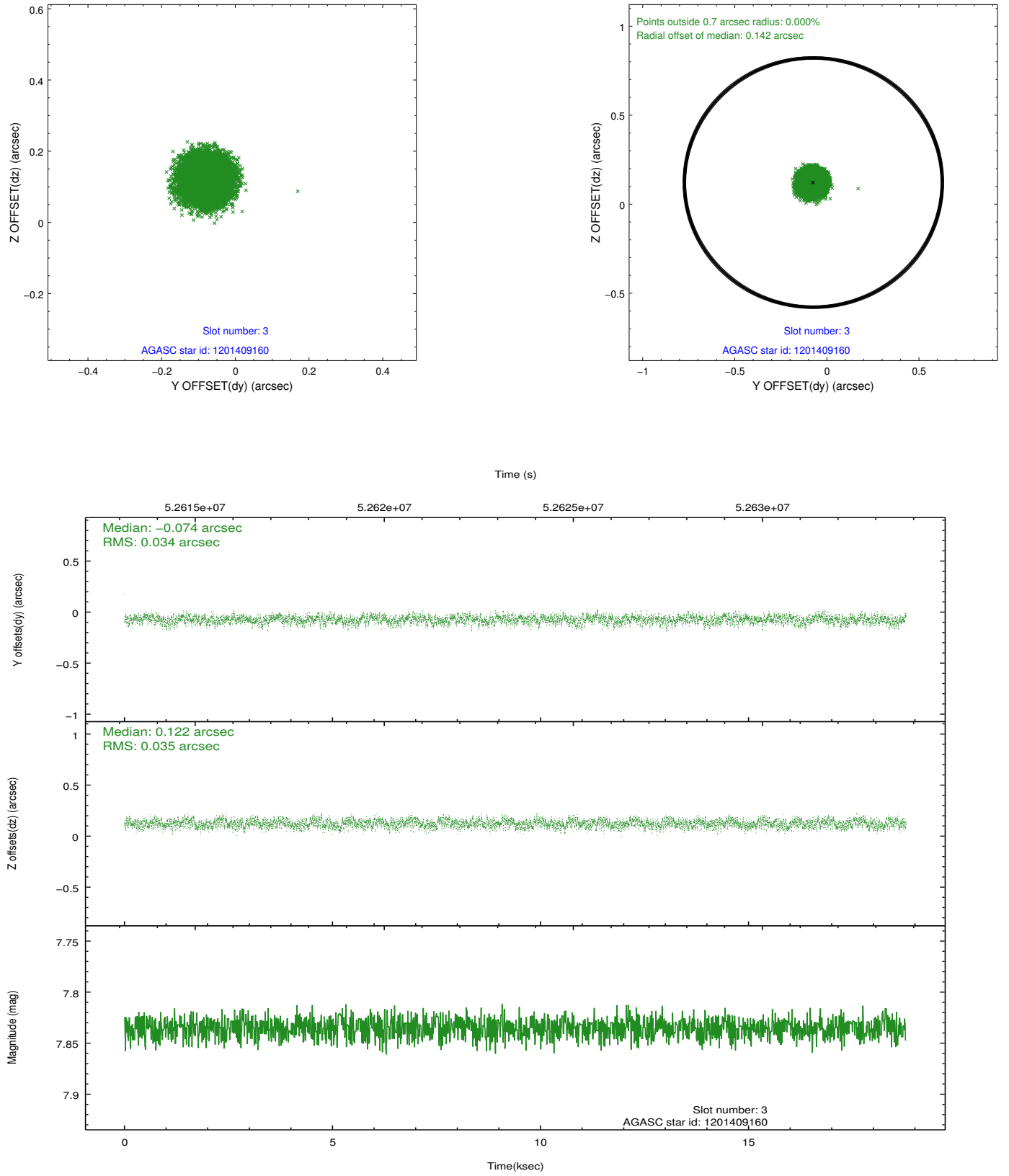


Slot Statistics

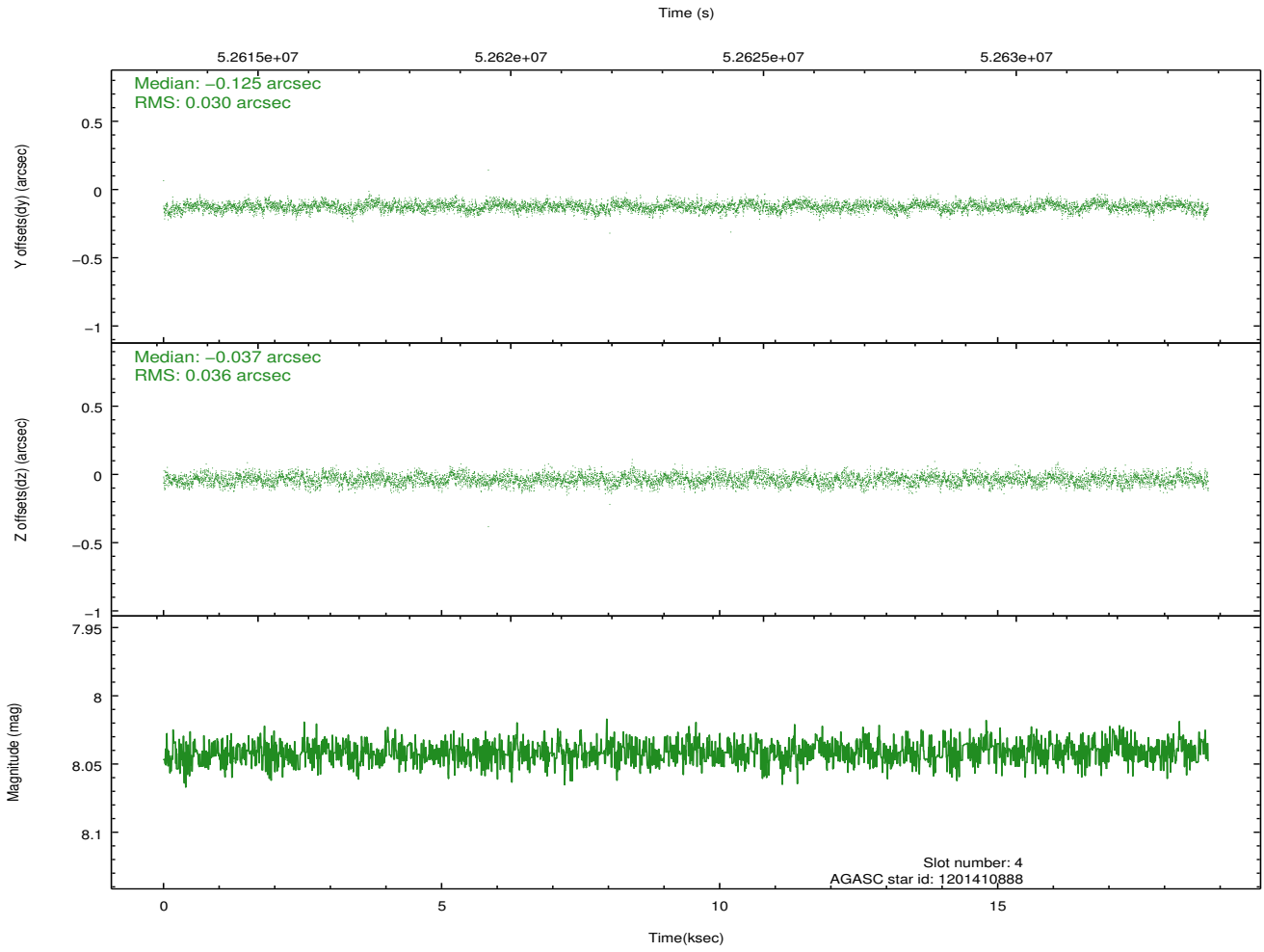
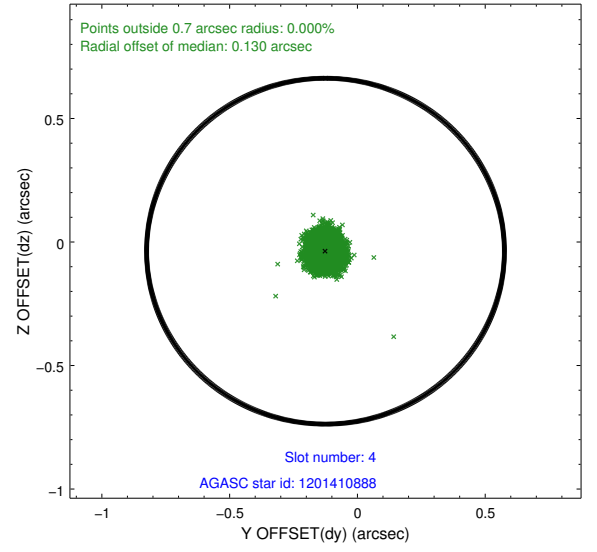
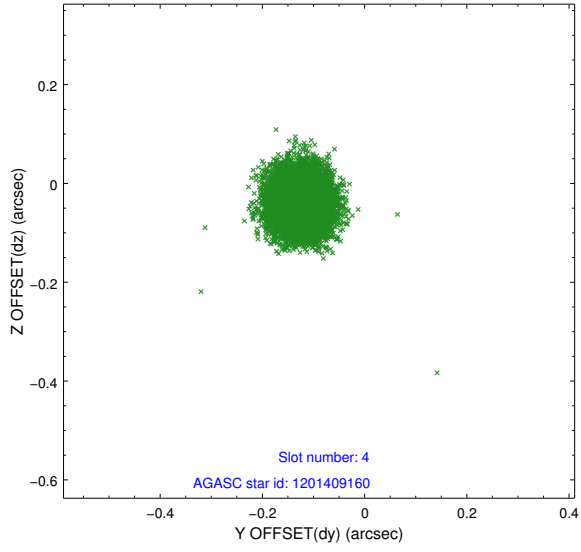
slot	status	id	mag	n_pts	med_dy	med_dz	dr1	dr2	ra	dec	mean_y	mean_z
0	UNUSED		0.00	0	0.000	0.000	0.000	0.000	0.000000	0.000000	0.00	0.00
1	FID	HRC-I-3	7.05	9144	0.041	-0.027	0.004	0.007	0.000000	0.000000	-1184.15	1016.81
2	FID	HRC-I-4	6.98	9149	0.036	-0.030	0.004	0.007	0.000000	0.000000	1287.00	1014.73
3	GUIDE	1201409160	7.83	9137	-0.074	0.122	0.053	0.082	81.660661	-70.063595	-1531.07	-96.71
4	GUIDE	1201410888	8.04	9140	-0.125	-0.037	0.050	0.080	81.046858	-70.018210	-1204.05	602.10
5	GUIDE	1201409312	9.25	9120	0.044	-0.075	0.068	0.111	80.915231	-69.503059	642.15	360.28
6	GUIDE	1201411288	9.25	9123	0.130	0.072	0.071	0.116	81.410076	-69.595403	181.41	-173.83
7	GUIDE	1201410616	9.34	9108	0.026	-0.079	0.074	0.120	82.516808	-69.784406	-801.83	-1361.01

## 2.4 Star Slots

### 2.4.1 Slot 3

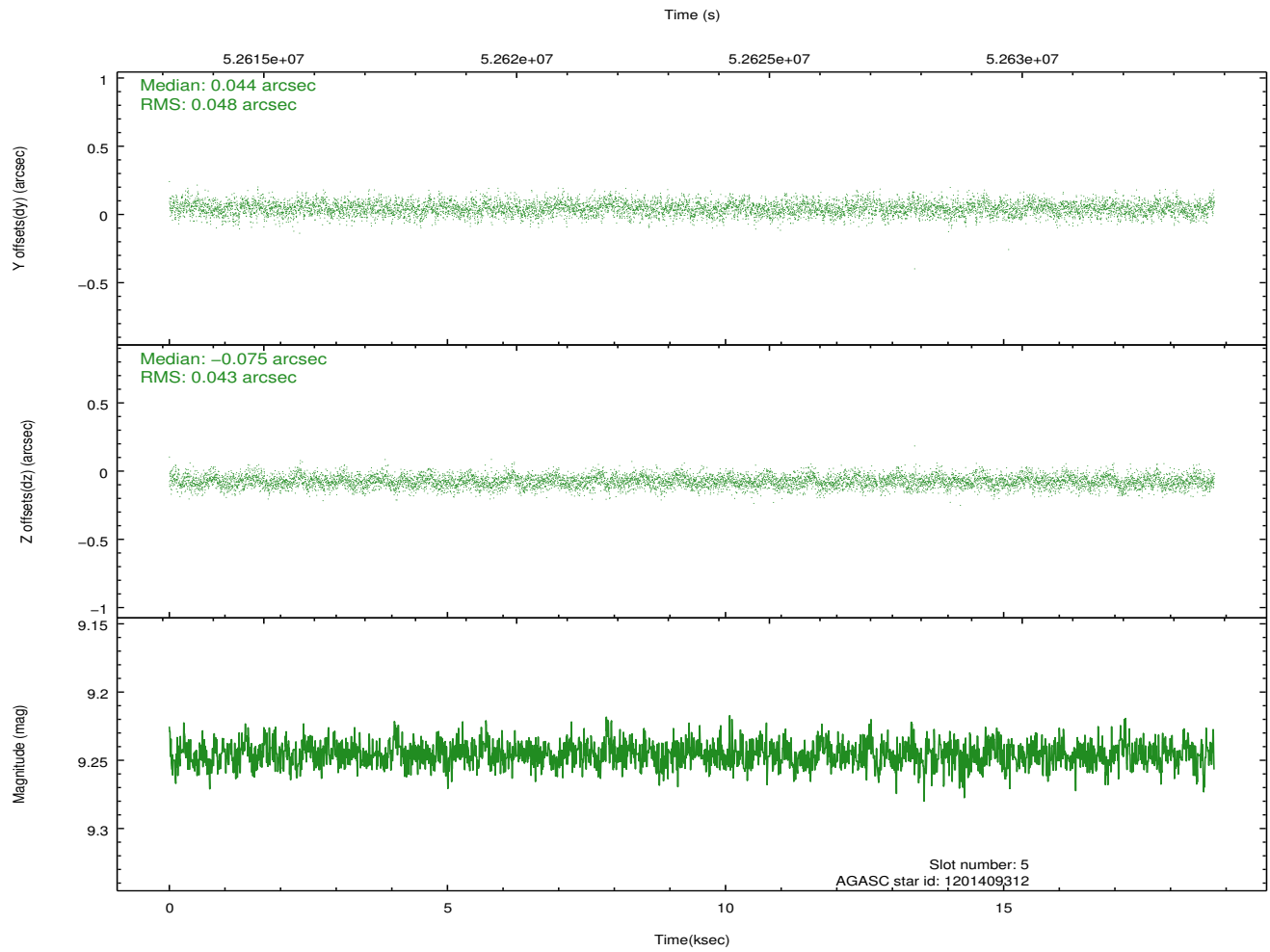
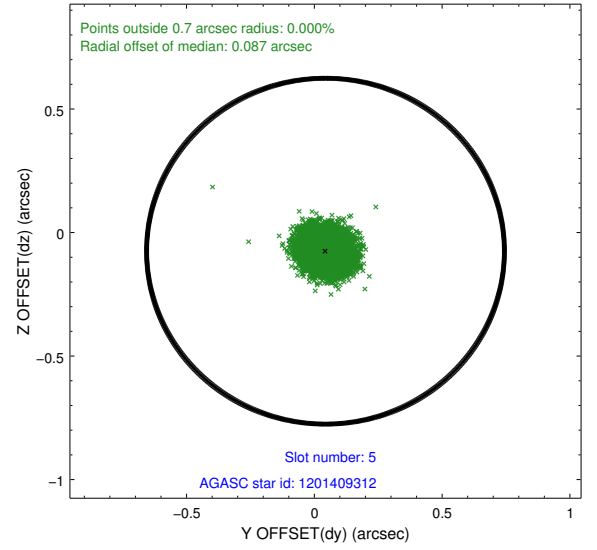
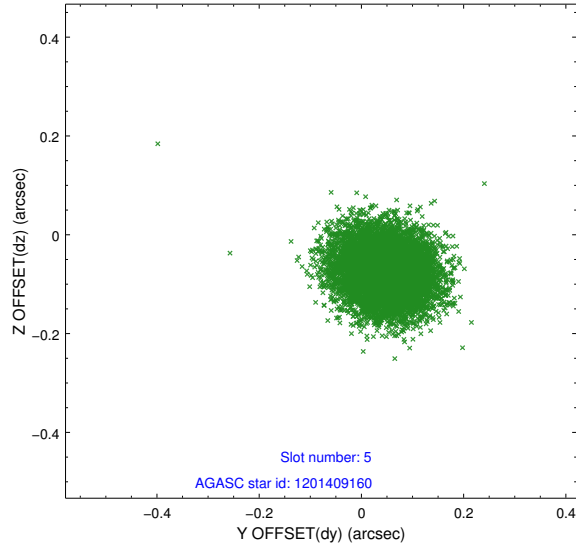


## 2.4.2 Slot 4

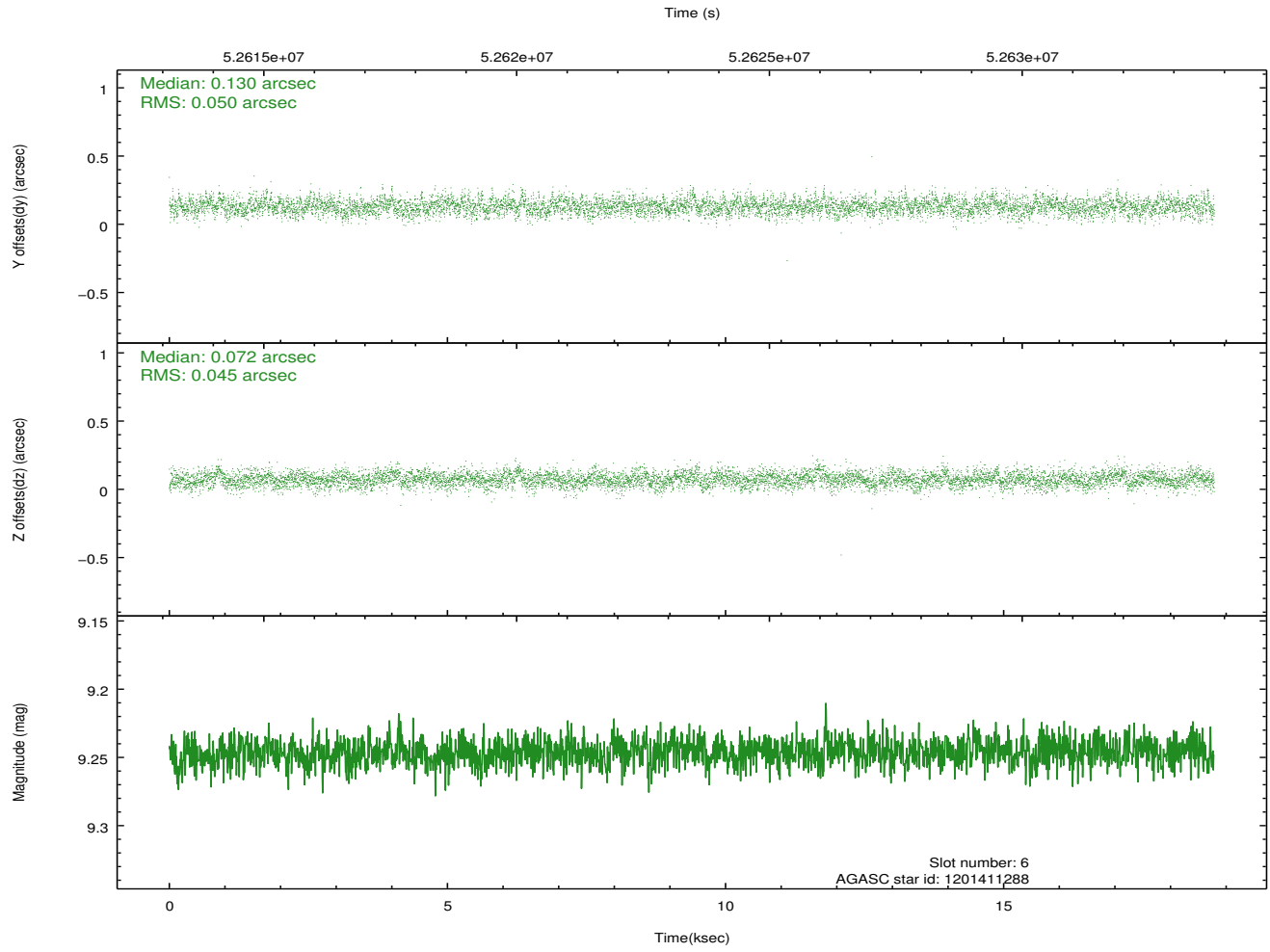
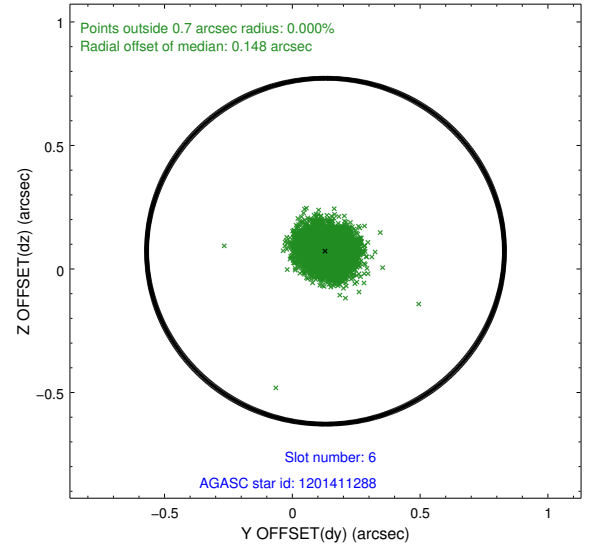
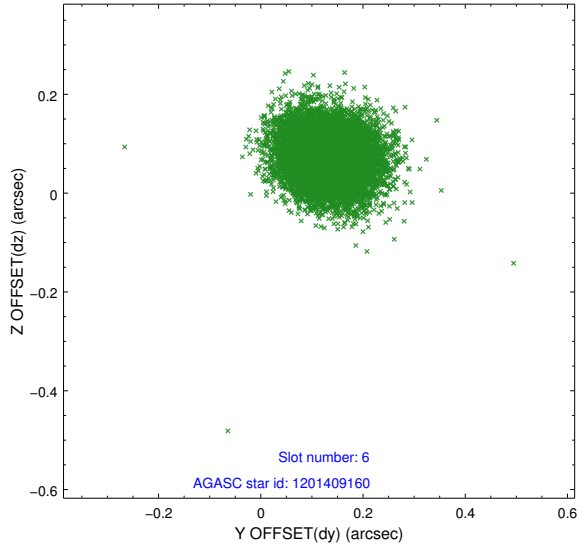




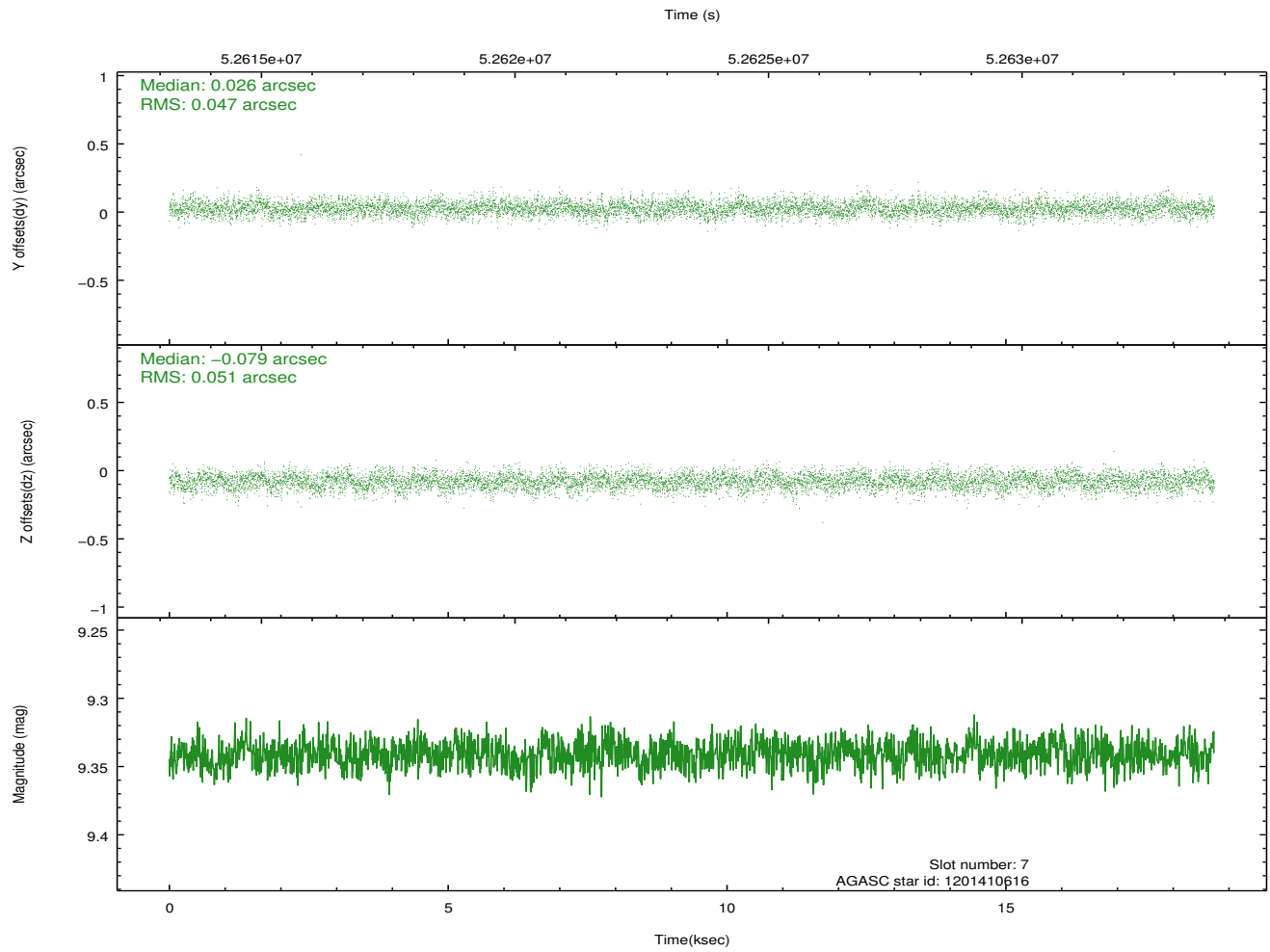
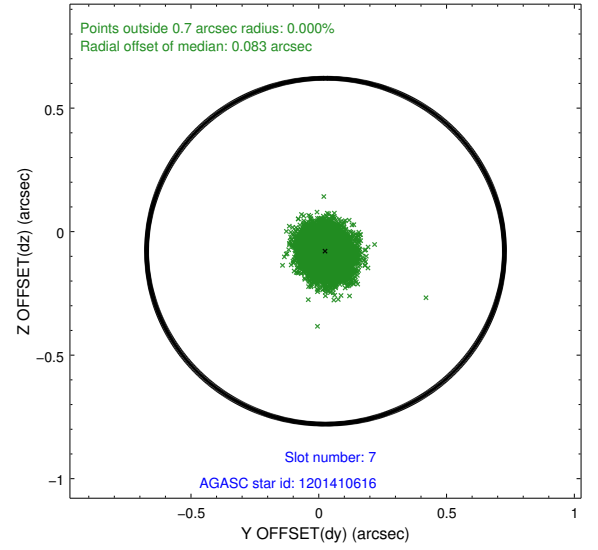
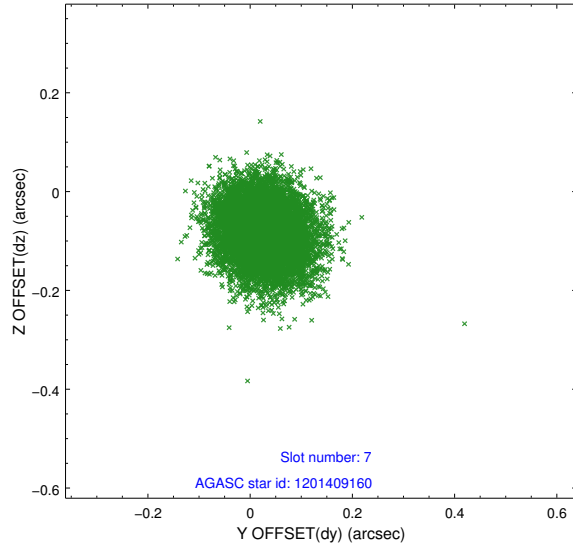
### 2.4.3 Slot 5



## 2.4.4 Slot 6

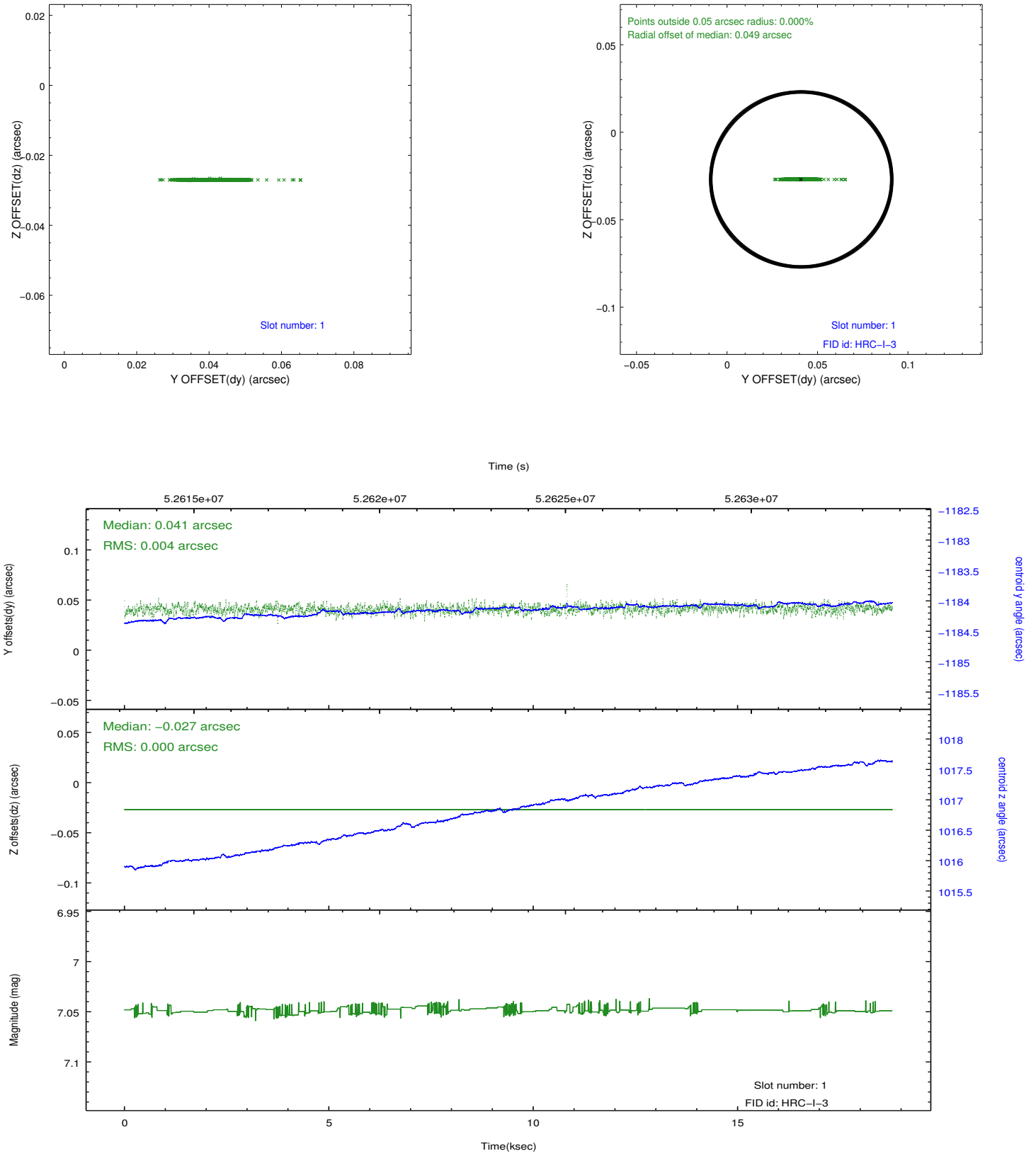


## 2.4.5 Slot 7

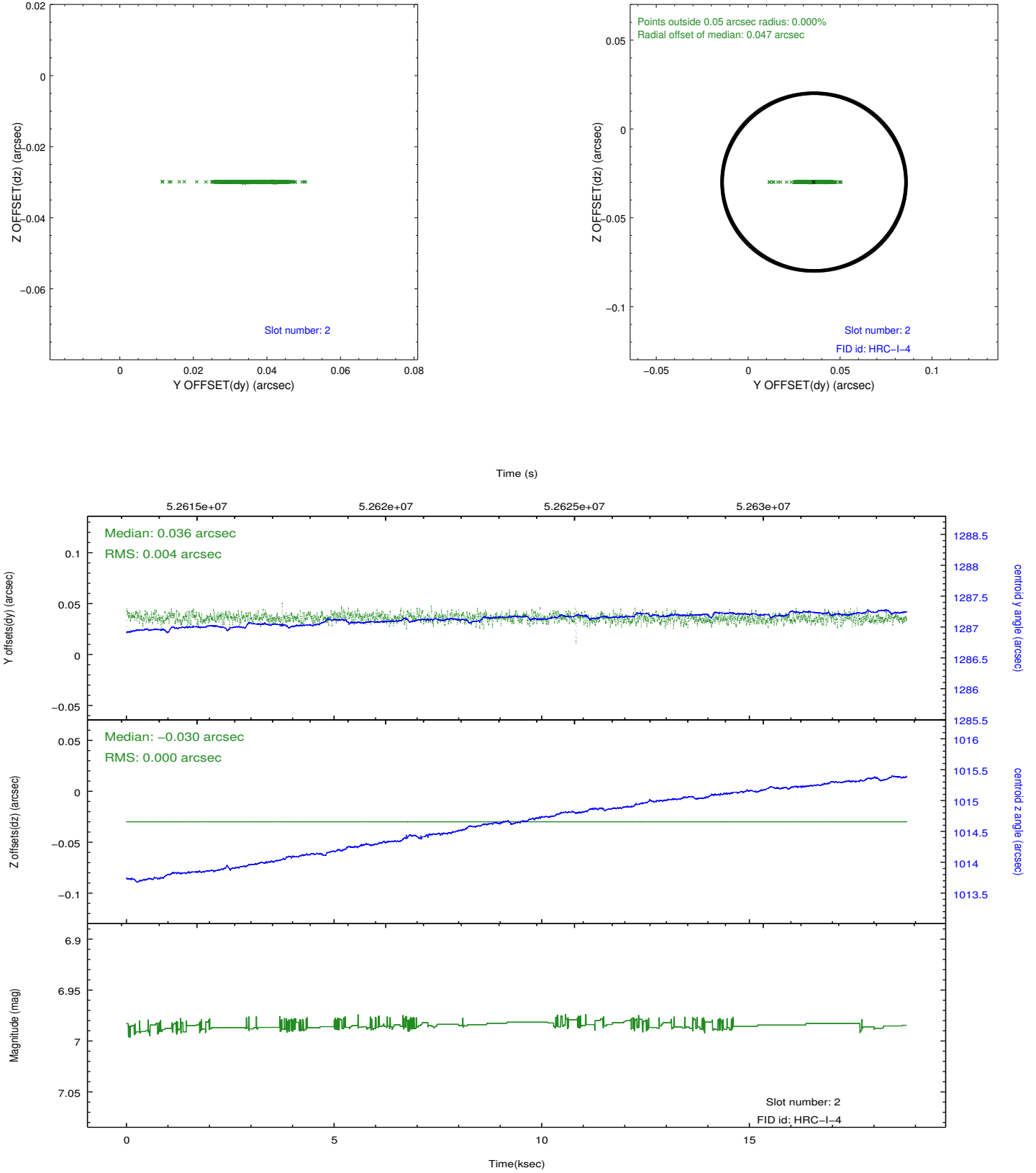


## 2.5 FID Slots

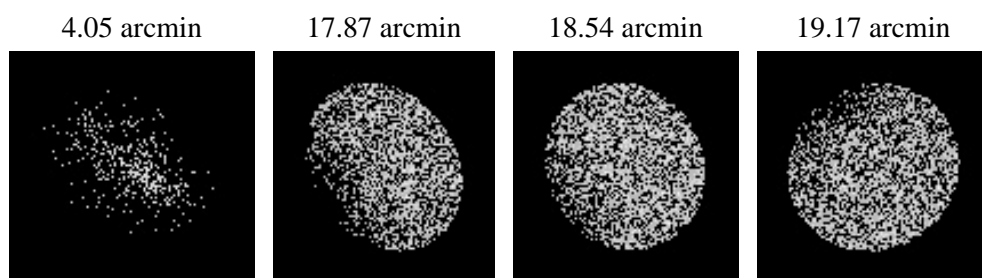
### 2.5.1 Slot 1



## 2.5.2 Slot 2



### 3 Point Sources



# A Summary

## A.1 Status

V&V Scientist	Joy Nichols
V&V Date (YYYY-MM-DD)	2010.07.28
V&V Edition	1
V&V Disposition and Status	OK
V&V Charge Time	12.121

## A.2 Comments

Charge time remains at previous value of 12.121 ksec, although with the current processing the charge time would have been 18.070 ksec.

===

One of the 3 fid lights was occulted by the HRC shutter, which was partially closed for this observation. Since the shutter was partially closed, the flux calibration may be compromised.