

# V&V Reference Report

## L2 ASCDS Version : 8.2.1

Observation 62437 - L2 Version 5

Chandra X-Ray Center

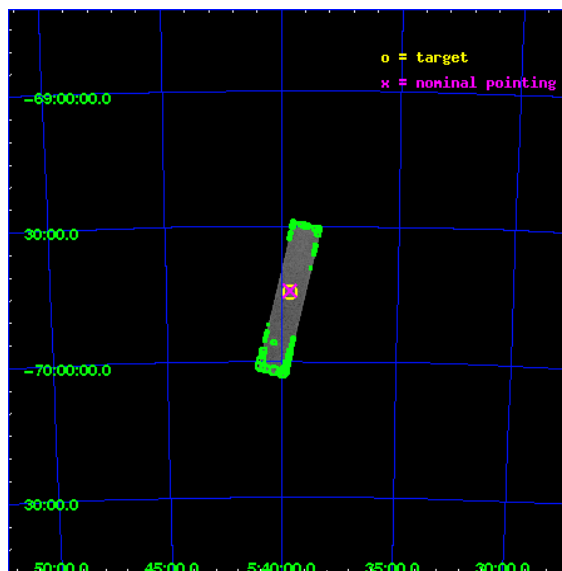
L2 Processing Date : Feb 11 2010

## Contents

<b>1</b>	<b>Front</b>	<b>2</b>
<b>2</b>	<b>OBI</b>	<b>3</b>
2.1	OBI . . . . .	3
2.1.1	Images . . . . .	3
2.1.2	Parameters . . . . .	4
2.1.3	Events . . . . .	4
2.2	Compared Parameters . . . . .	5
2.3	Aspect . . . . .	6
2.4	Star Slots . . . . .	9
2.4.1	Slot 3 . . . . .	9
2.4.2	Slot 4 . . . . .	10
2.4.3	Slot 5 . . . . .	11
2.4.4	Slot 6 . . . . .	12
2.4.5	Slot 7 . . . . .	13
2.5	FID Slots . . . . .	14
2.5.1	Slot 0 . . . . .	14
2.5.2	Slot 1 . . . . .	15
2.5.3	Slot 2 . . . . .	16
<b>3</b>	<b>Point Sources</b>	<b>17</b>
<b>A</b>	<b>Summary</b>	<b>18</b>
A.1	Status . . . . .	18
A.2	Comments . . . . .	18

# 1 Front

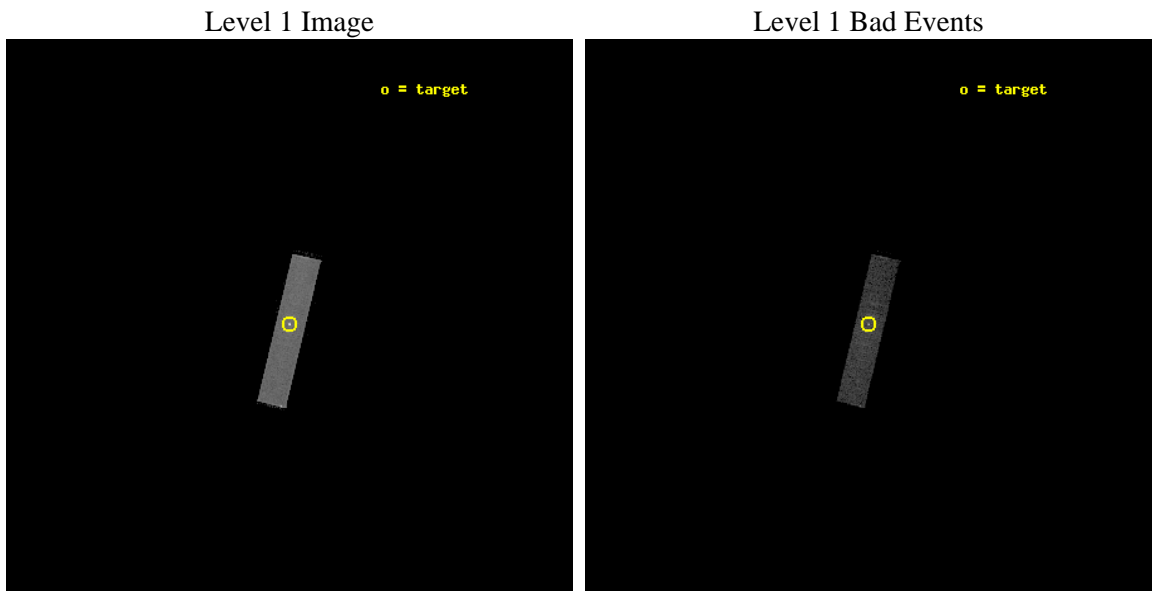
seq_num	490015	Sequence number
obs_id	62437	Observation id
title	&#160	Proposal title
observer	Dr. CXC Calibration	Principal investigator
object	LMC X-1	Source name
ra_targ	84.914583	Observer's specified target RA
dec_targ	-69.743611	Observer's specified target Dec
ra_nom	84.912720048658	Nominal RA
dec_nom	-69.738230006839	Nominal Dec
roll_nom	103.53012900455	Nominal Roll
revision	5	Processing version of data
ontime	1115.2000400424	[s]
livetime	1106.0518462696	Ontime multiplied by DTCOR
l2events	53471	Number of level 2 events



## 2 OBI

### 2.1 OBI

#### 2.1.1 Images



2.1.2 Parameters

obi_num	0	Obi number	sched_exp_time	36000.000000	Scheduled observation exposure time
ascdsver	8.2.1	Processing system revision	ontime	1115.2000400424	[s]
caldbver	4.1.5	&#160	ll events	81310	Number of level 1 events
date	2010-02-11T20:10:24	Date and time of file creation			
revision	3	Processing version of data			

2.1.3 Events

Level 1 Events

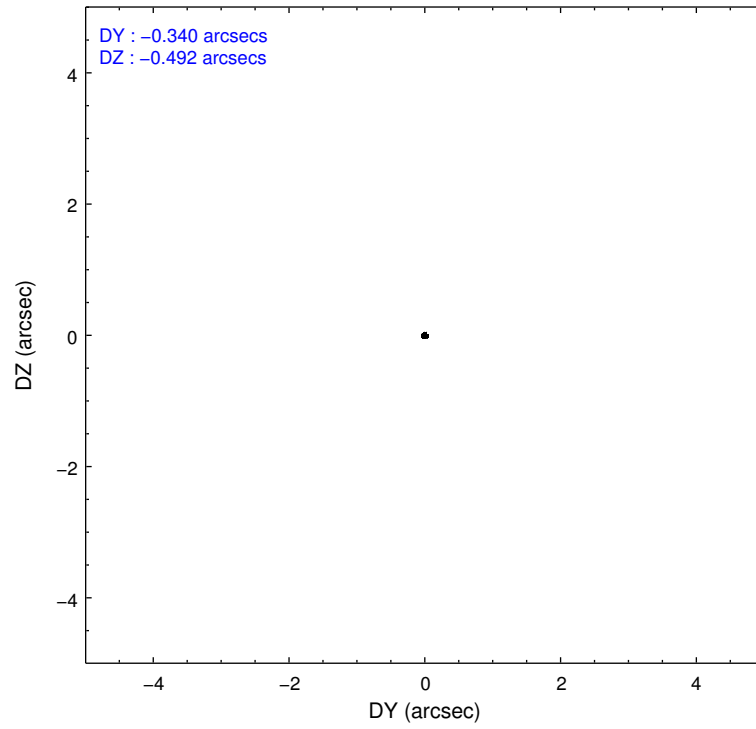
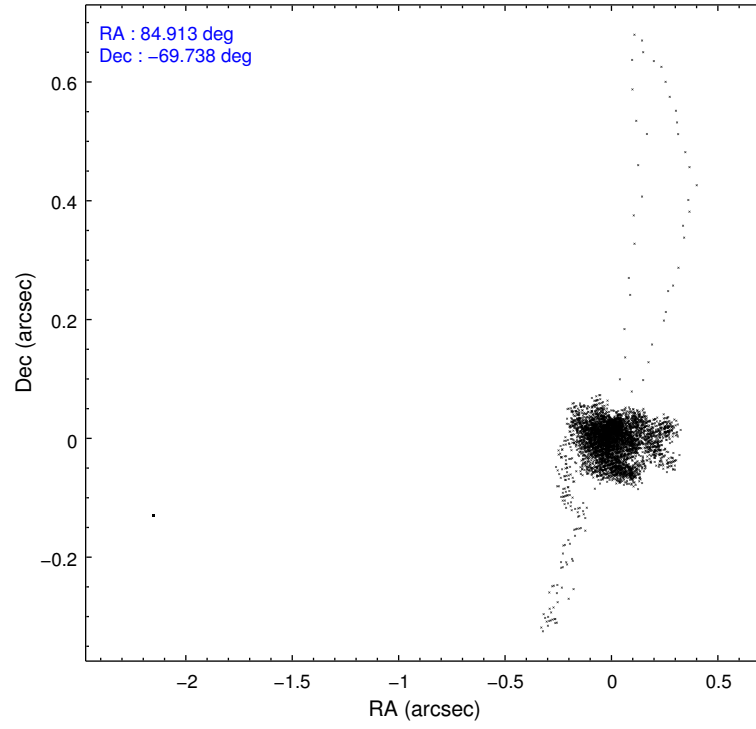
	segment 1	segment 2	segment 3
level 1 events	0	81310	0
rejected events	0	23653	0
rejected %	0%	29%	0%

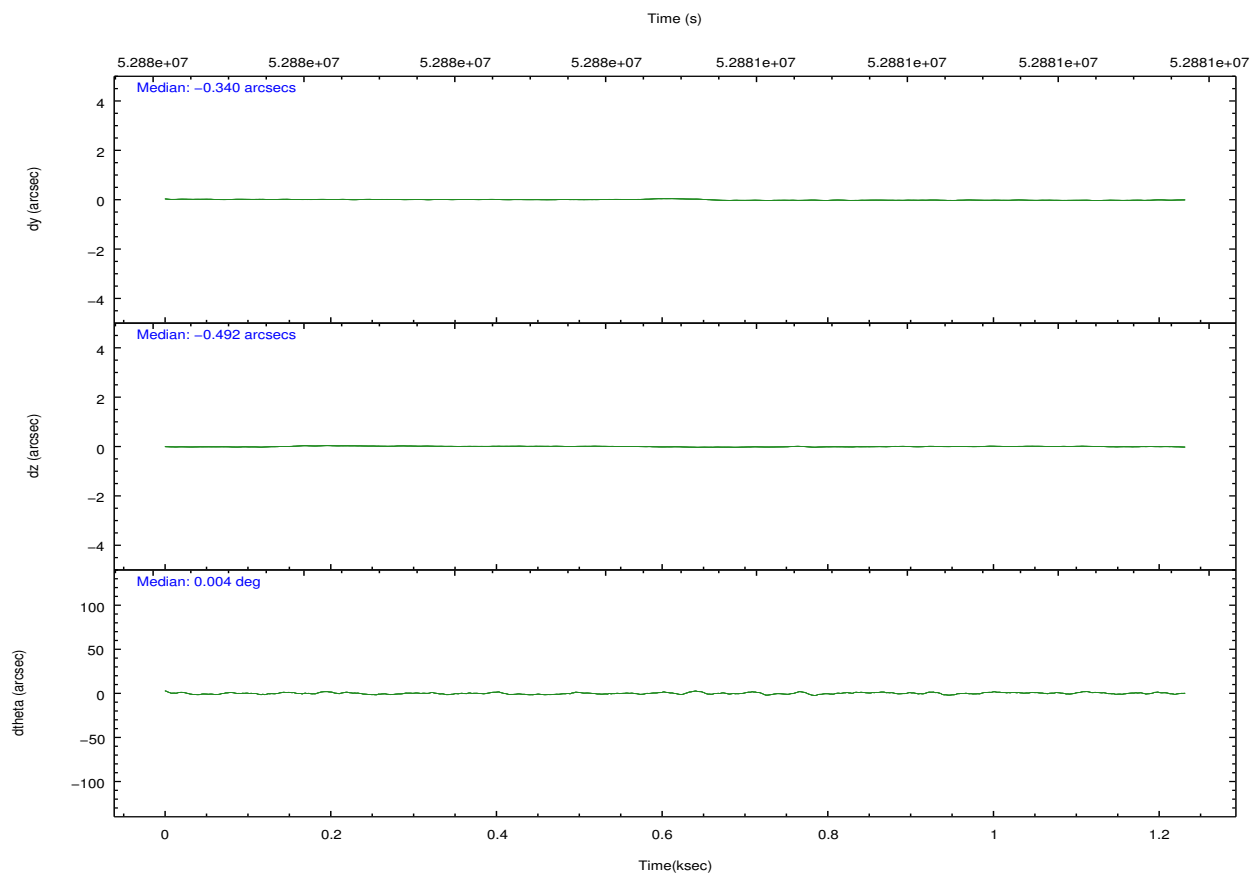
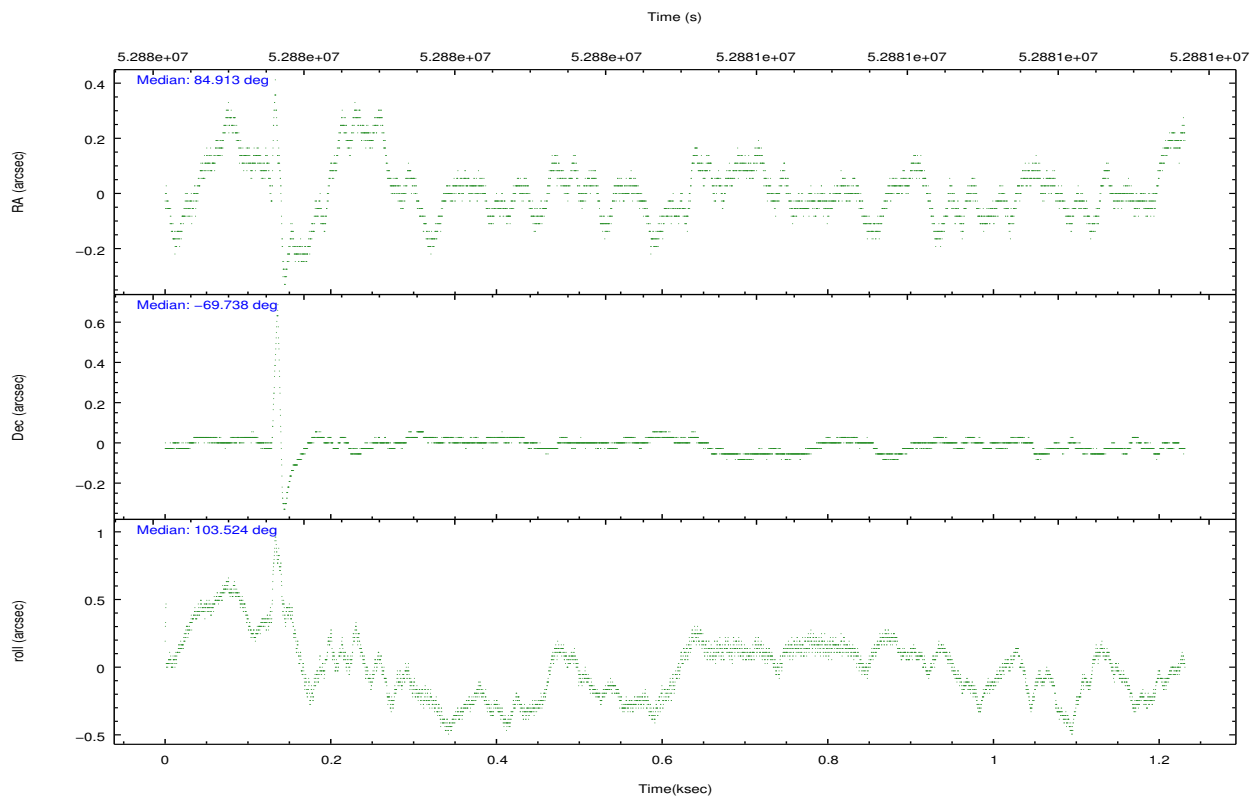
## 2.2 Compared Parameters

Parameter	Planned	Actual
Instrument	HRC	HRC
Detector	HRC-S	HRC-S
Grating	NONE	NONE
Data mode	OBSERVING	OBSERVING
Observation mode	POINTING	POINTING
Pointing RA	84.971636	84.91272004865772
Pointing Dec	-69.758744	-69.73823000683939
Pointing Roll	103.518059	103.5301290045473
Window start time	52856164.184000	52856164.184000
Window stop time	52892164.184000	52892164.184000
SIM focus pos (mm)	-1.429586	-0.7765883295792845
SIM defocus (mm)	0.1037507710433287	0.7567483098250124
SIM translation stage pos (mm)	250.455976	250.466033080201
SIM translation stage offset (mm)	0	-0.01005468664627074
Observation start time	52856164.184000	52879875.187347
Observation start date	1999-09-04T18:15:00	1999-09-05T00:51:15
Observation end time	52892164.184000	52881109.287392
Observation end date	1999-09-05T04:15:00	1999-09-05T01:11:49

Parameter	Planned	Actual
Obspar format version number	6	6
Obspar file type	PREDICTED	ACTUAL
Obspar update status	NONE	UPDATED

## 2.3 Aspect



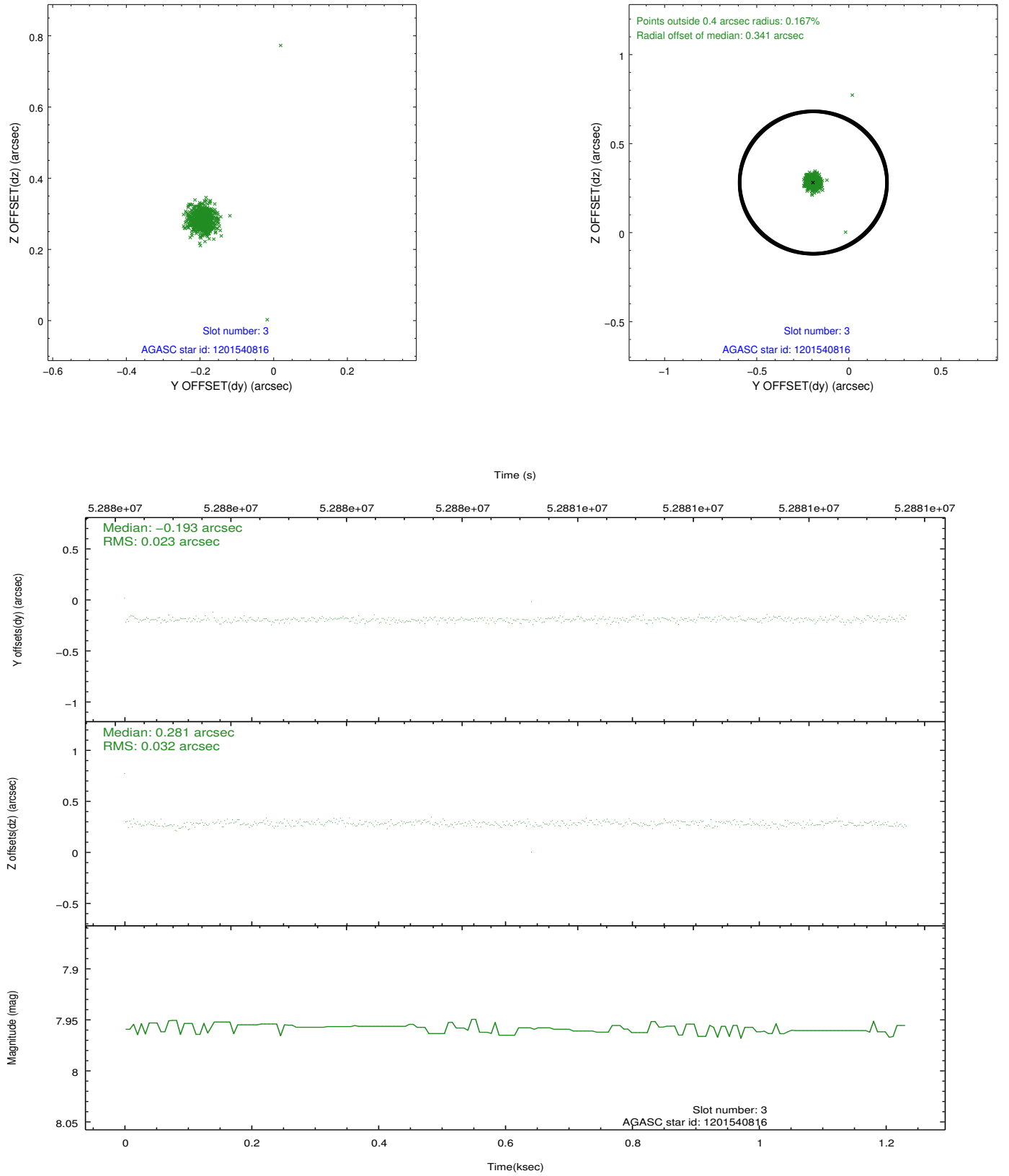


Slot Statistics

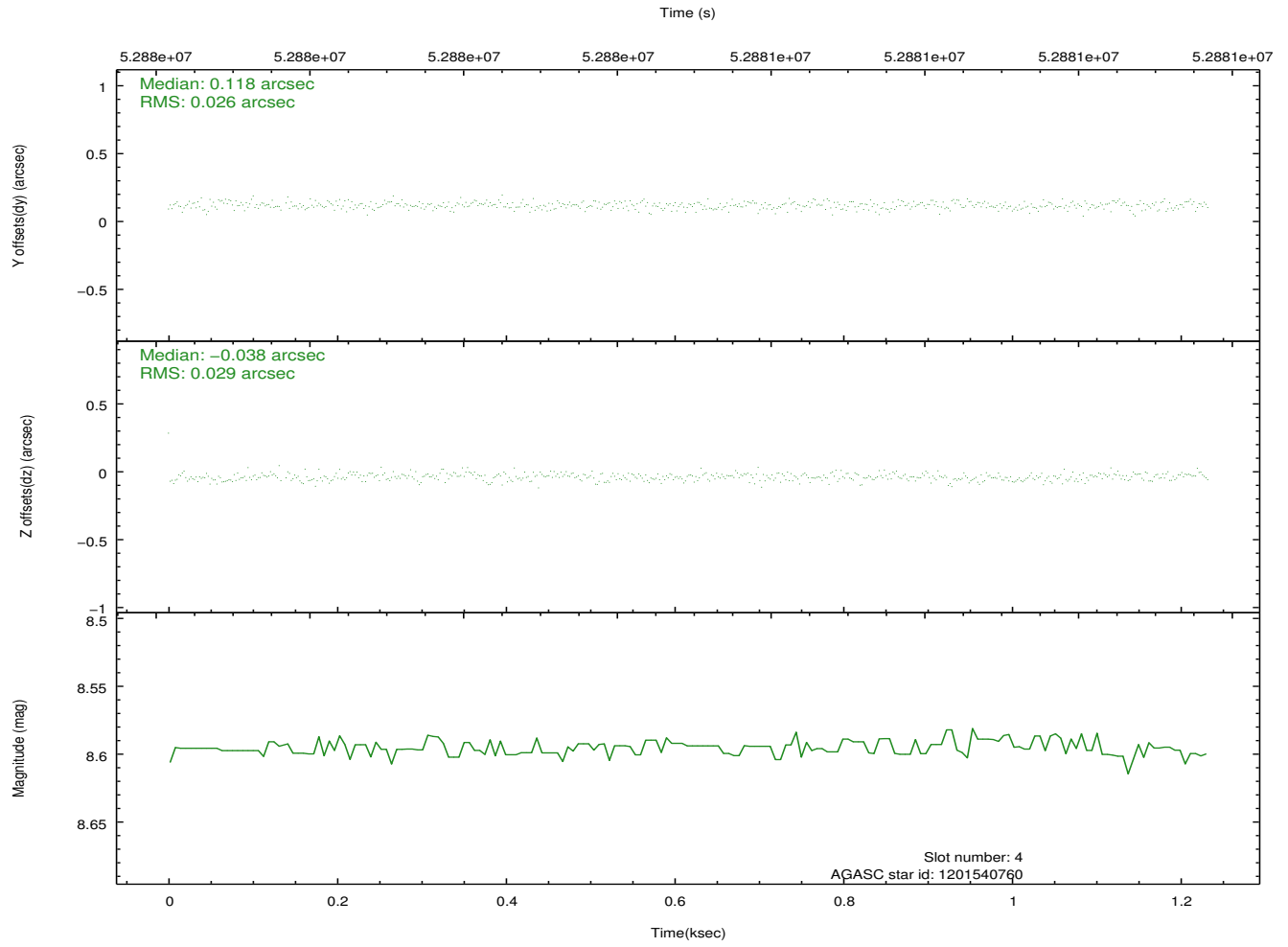
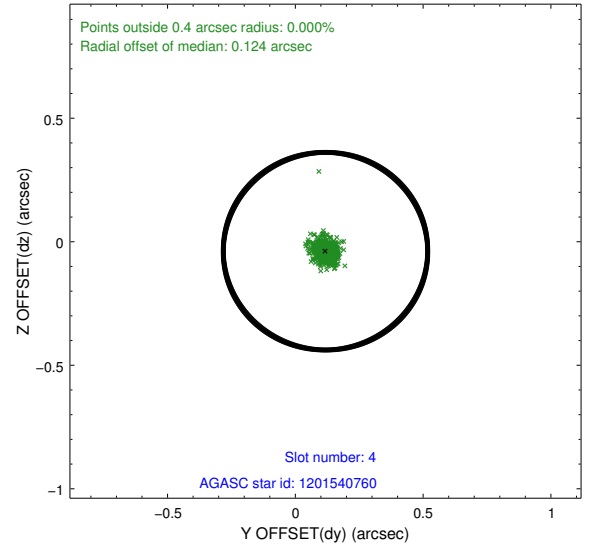
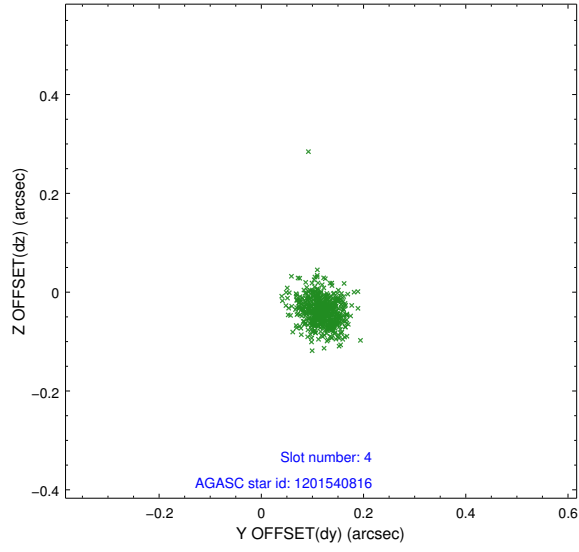
slot	status	id	mag	n_pts	med_dy	med_dz	dr1	dr2	ra	dec	mean_y	mean_z
0	BAD	HRC-S-1	7.00	66	0.164	-0.023	0.017	0.026	0.000000	0.000000	-1153.76	-447.60
1	FID	HRC-S-3	7.00	600	0.108	-0.096	0.004	0.007	0.000000	0.000000	-1158.31	581.17
2	FID	HRC-S-4	6.99	602	0.156	-0.097	0.004	0.007	0.000000	0.000000	1242.87	585.14
3	GUIDE	1201540816	7.96	600	-0.193	0.281	0.032	0.052	86.998494	-69.749817	-599.55	-2451.89
4	GUIDE	1201540760	8.60	600	0.118	-0.038	0.039	0.066	84.403691	-70.419249	-2155.80	1219.22
5	GUIDE	1201411368	10.05	599	-0.151	-0.169	0.085	0.157	83.629696	-70.495613	-2223.44	2194.86
6	GUIDE	1200883536	9.87	600	0.084	0.056	0.081	0.131	83.119228	-69.218429	2405.77	1858.73
7	GUIDE	1201020088	10.48	599	0.137	-0.137	0.108	0.183	86.319248	-68.997756	2243.26	-2322.53

## 2.4 Star Slots

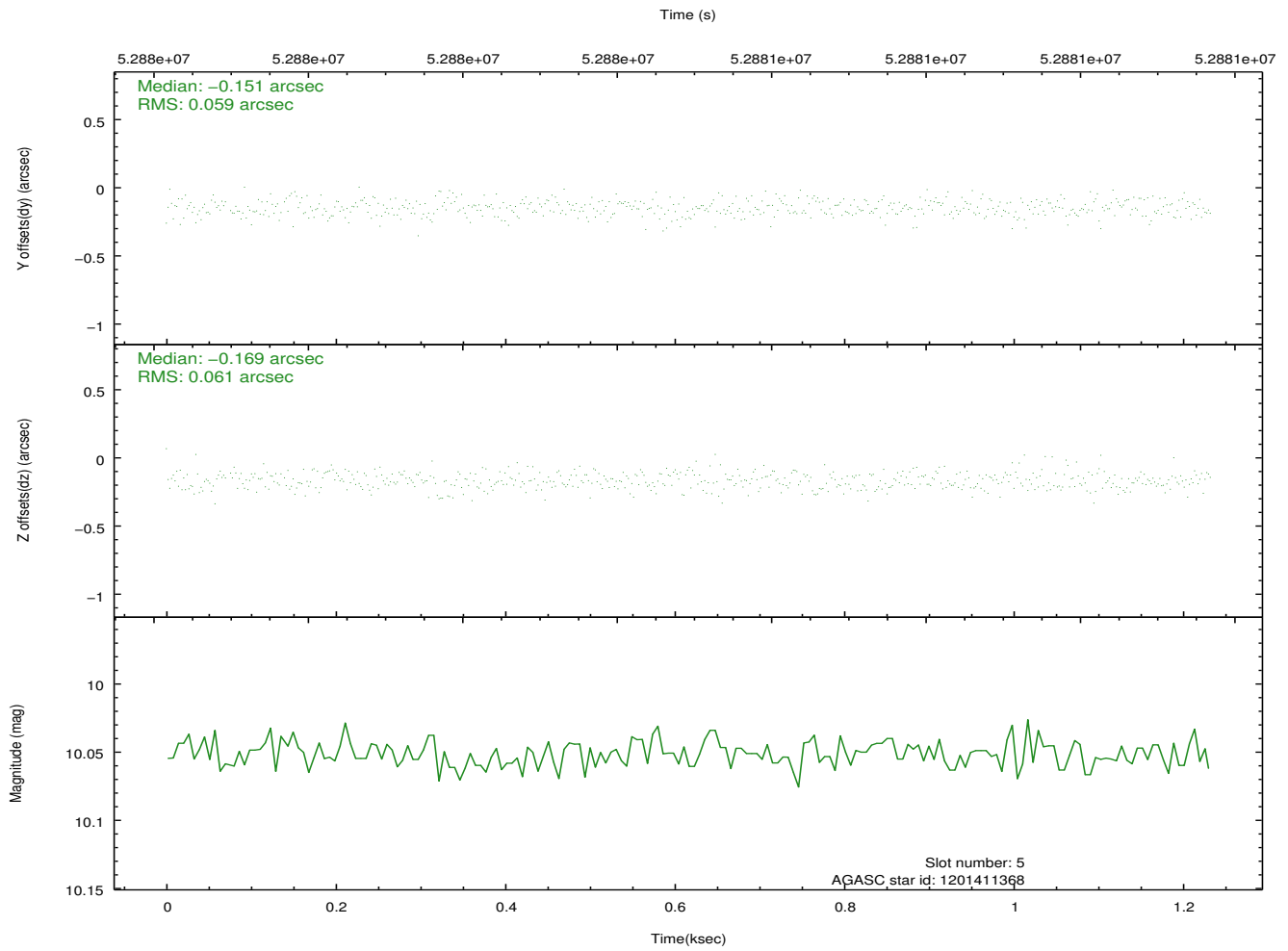
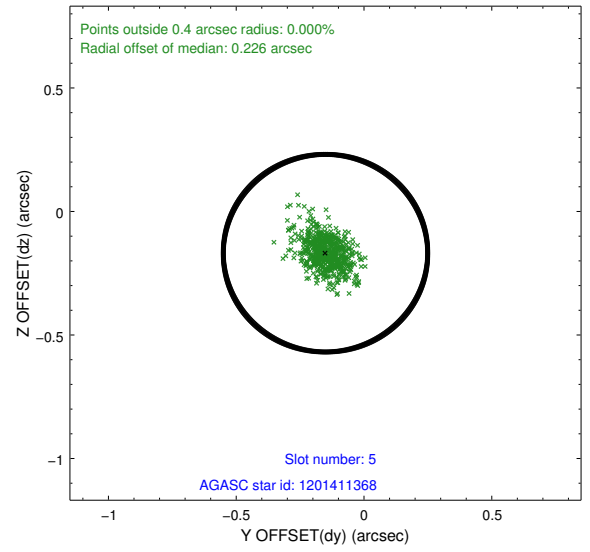
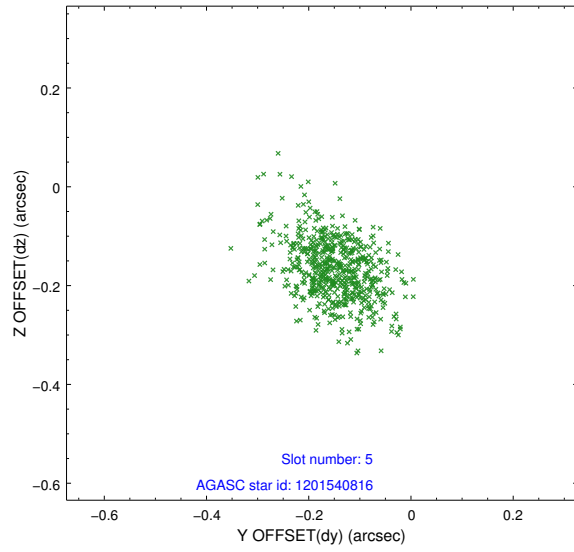
### 2.4.1 Slot 3



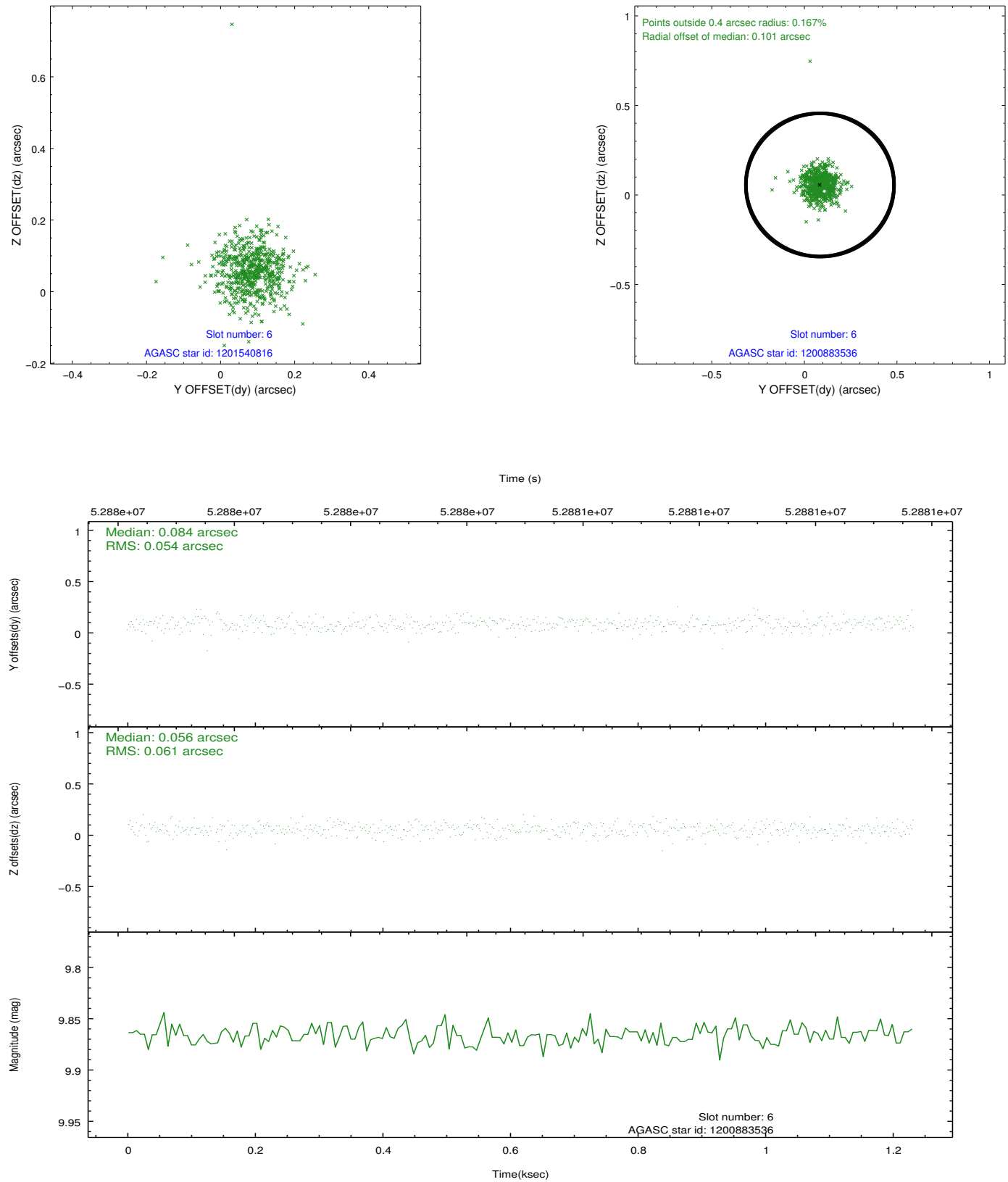
## 2.4.2 Slot 4



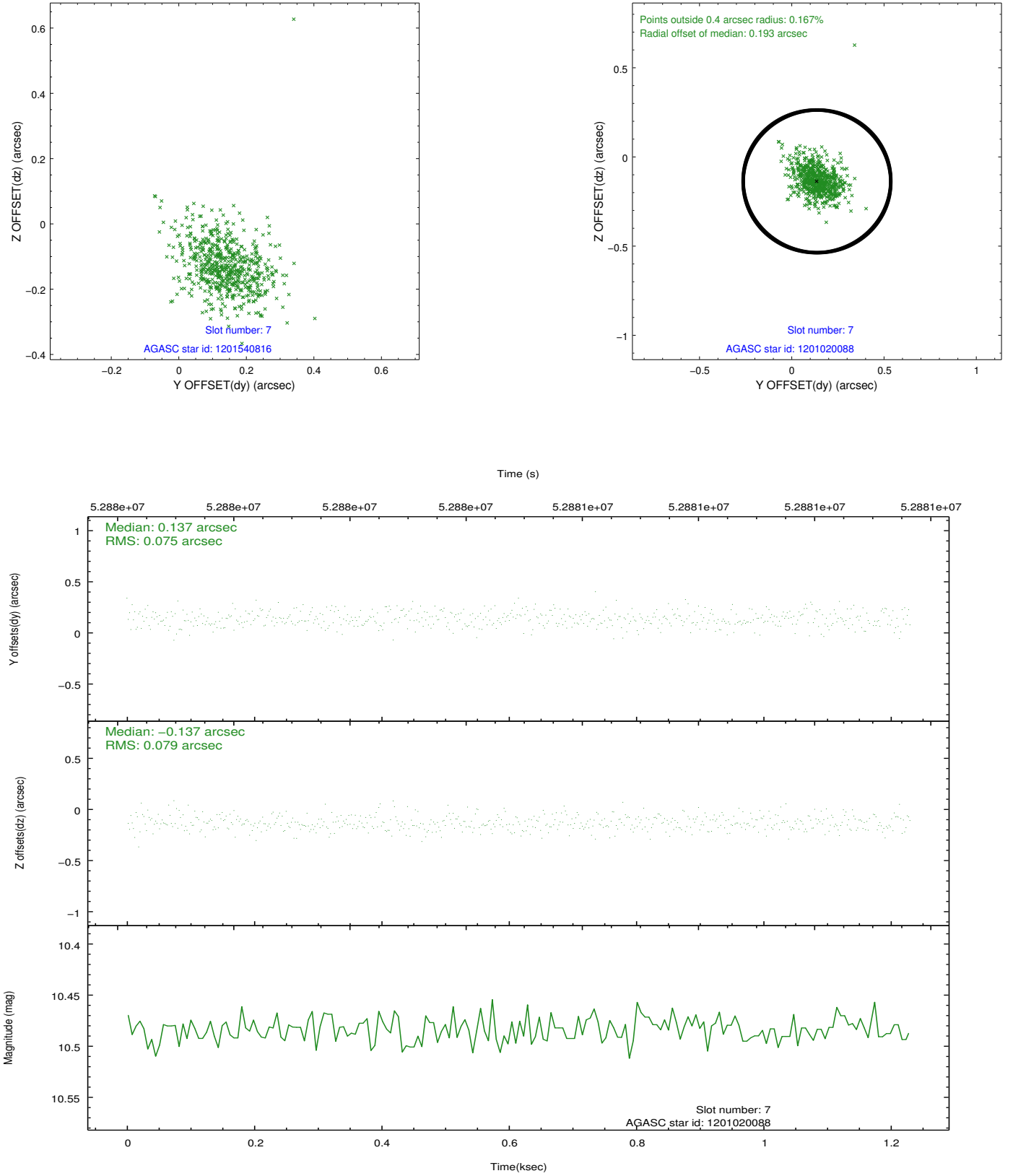
### 2.4.3 Slot 5



## 2.4.4 Slot 6

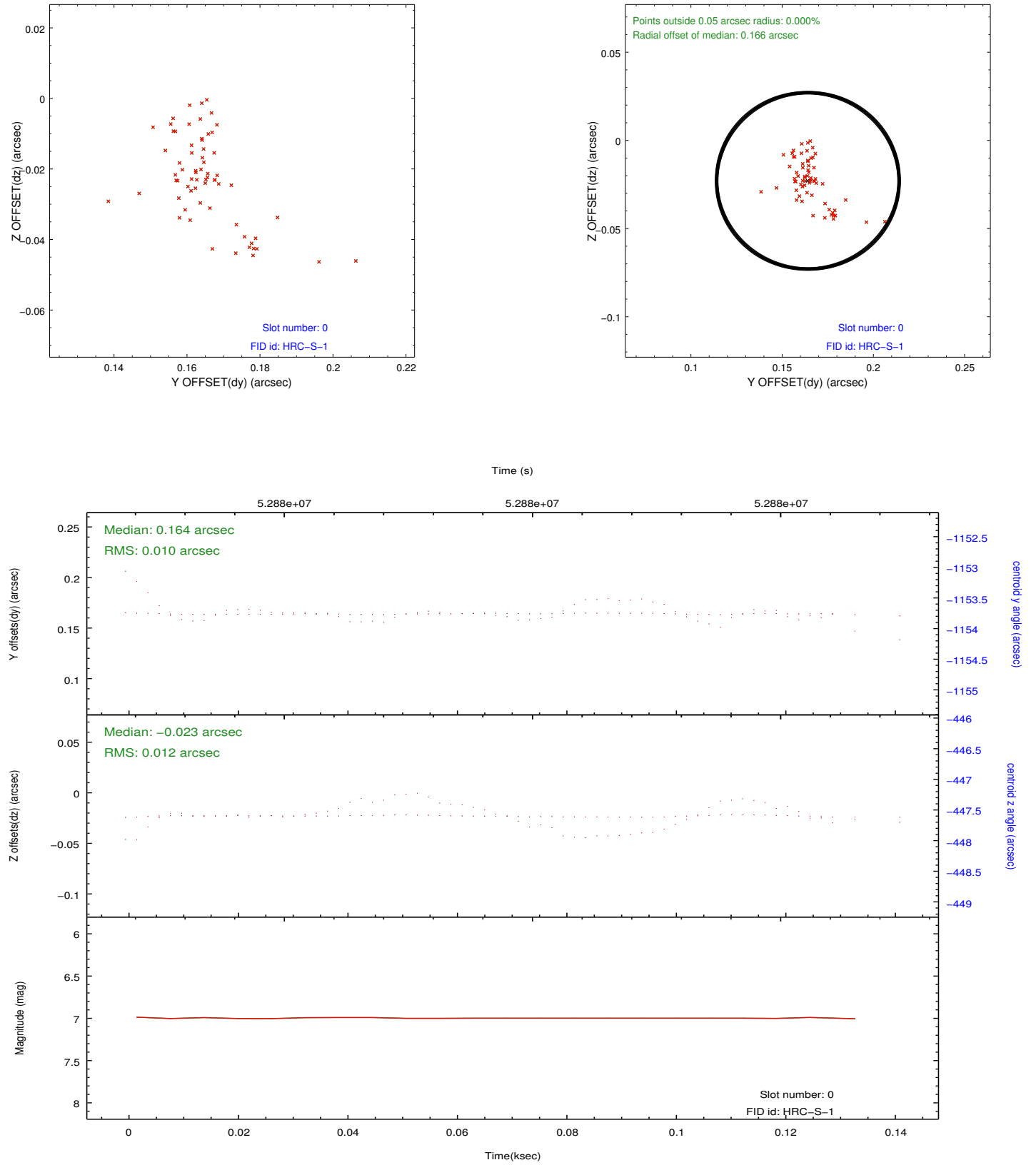


## 2.4.5 Slot 7

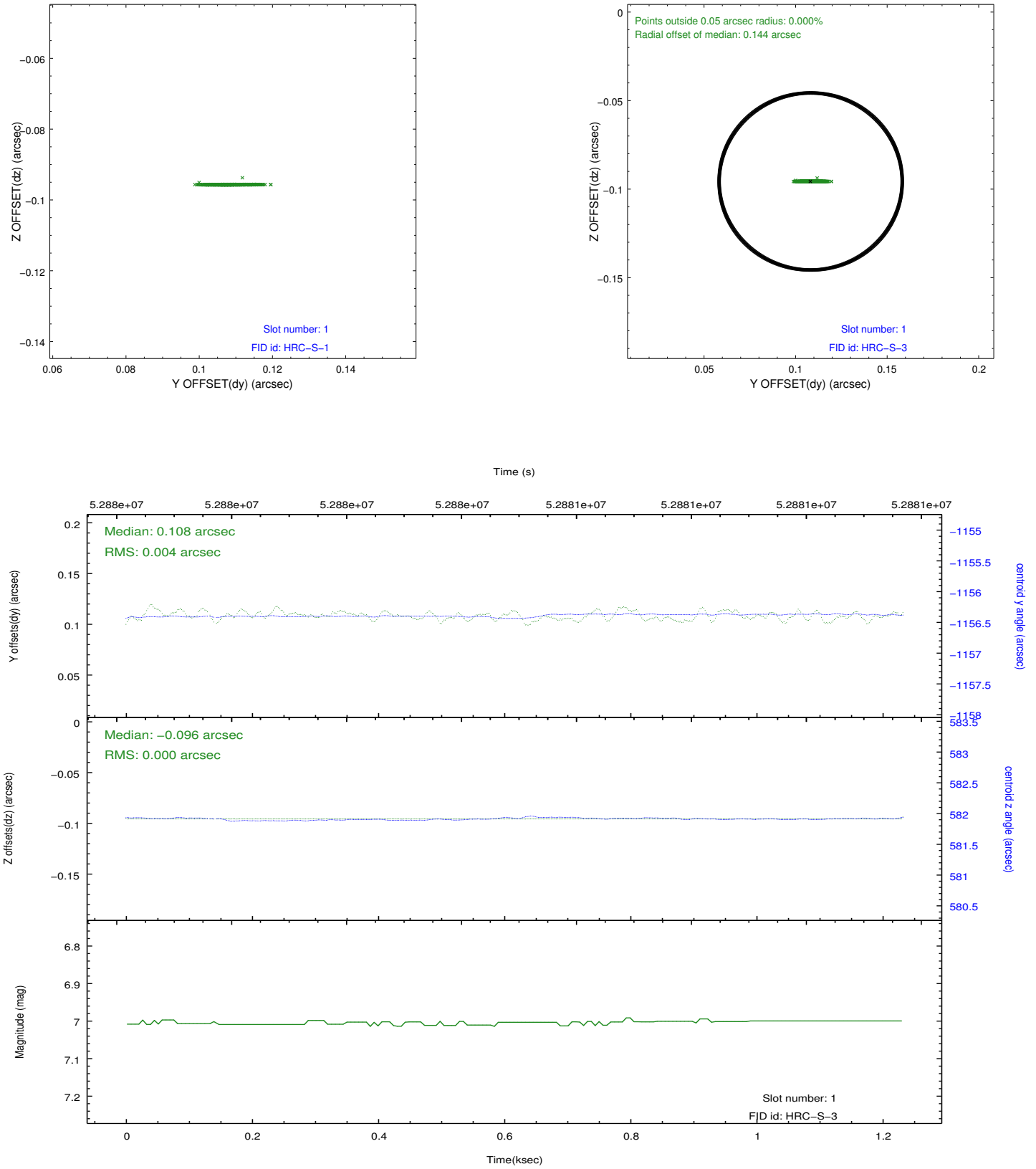


## 2.5 FID Slots

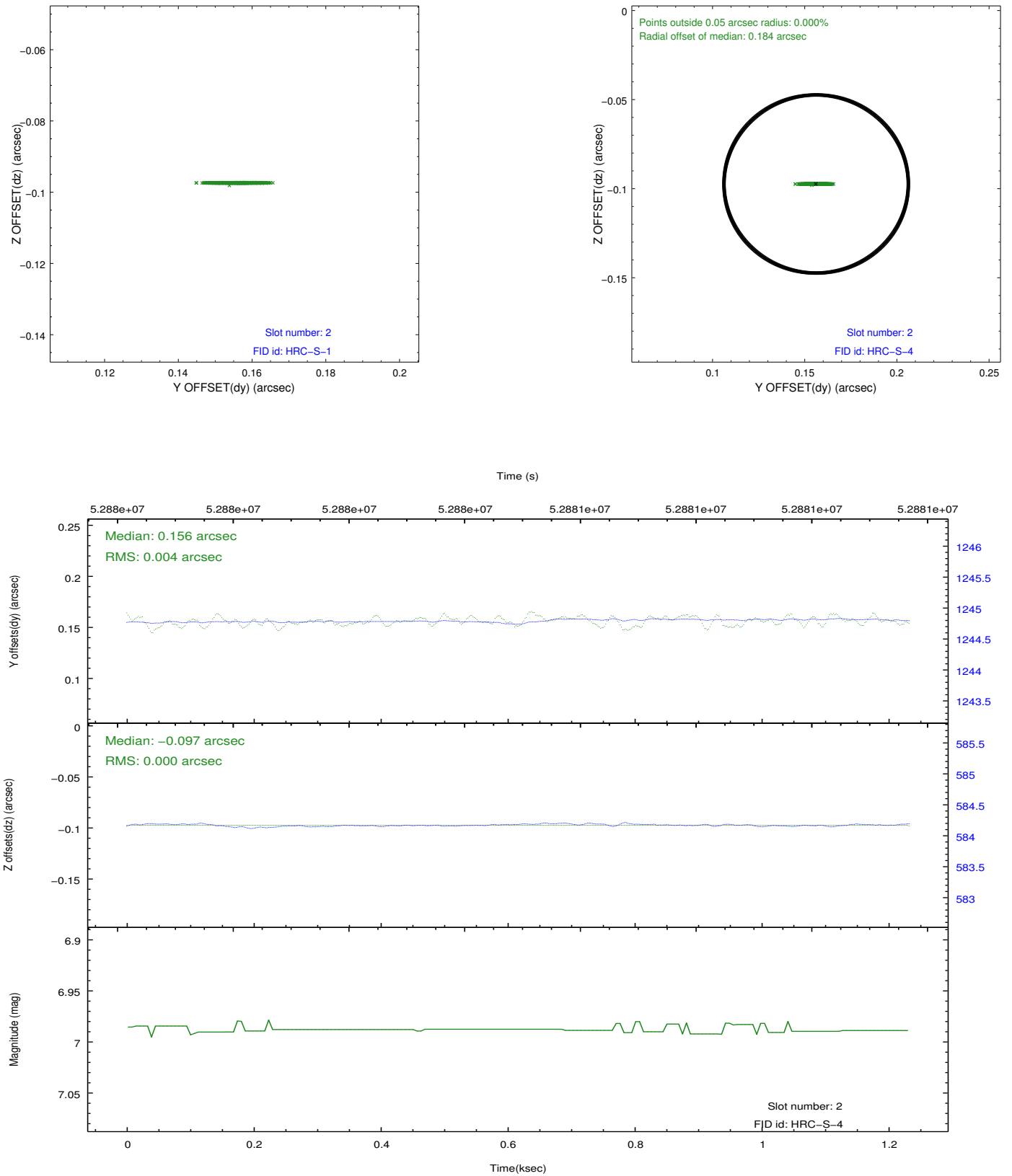
### 2.5.1 Slot 0



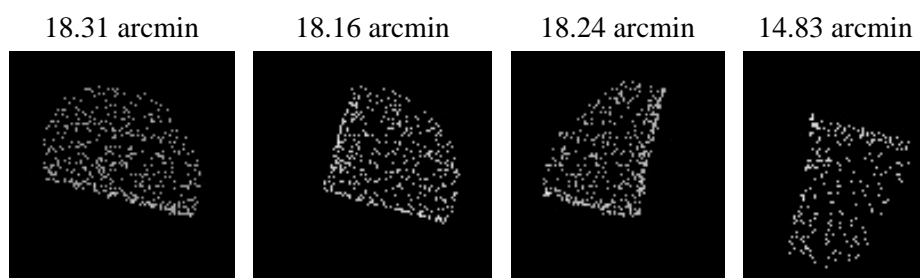
## 2.5.2 Slot 1



### 2.5.3 Slot 2



### 3 Point Sources



# A Summary

## A.1 Status

V&V Scientist	Joy Nichols
V&V Date (YYYY-MM-DD)	2010.05.13
V&V Edition	1
V&V Disposition and Status	OK
V&V Charge Time	0.003

## A.2 Comments

HRC-S shutter focus run. This is 3rd quad shutter focus test. The shutter is moved several times during the observation.

===

Charge time for this ObsId remains at original value of 0.003 ks, although with the current processing the charge time would have been 1.115 ksec.

===

The fid light in slot 0 was occulted by the HRC shutter. The aspect solution is not expected to be degraded by removing one fid light from the solution.