

V&V Reference Report

L2 ASCDS Version : 8.1.2

Observation 1165 - L2 Version 6

Chandra X-Ray Center

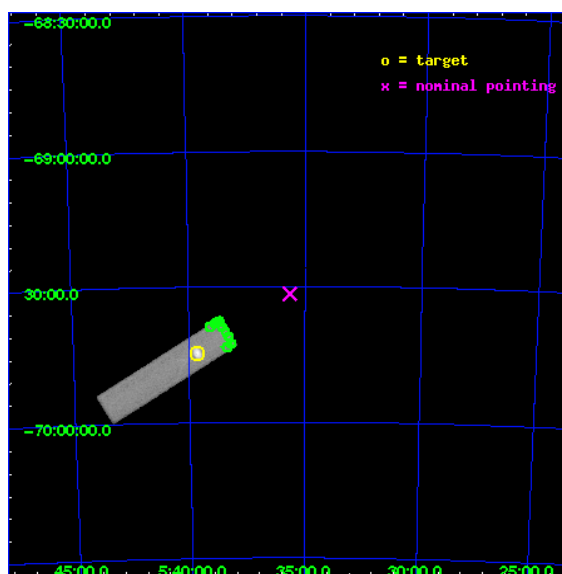
L2 Processing Date : Dec 2 2009

Contents

1	Front	2
2	OBI	3
2.1	OBI	3
2.1.1	Images	3
2.1.2	Parameters	4
2.1.3	Events	4
2.2	Compared Parameters	5
2.3	Aspect	6
2.4	Star Slots	9
2.4.1	Slot 3	9
2.4.2	Slot 4	10
2.4.3	Slot 5	11
2.4.4	Slot 6	12
2.4.5	Slot 7	13
2.5	FID Slots	14
2.5.1	Slot 0	14
2.5.2	Slot 1	15
2.5.3	Slot 2	16
3	Point Sources	17
A	Summary	18
A.1	Status	18
A.2	Comments	18

1 Front

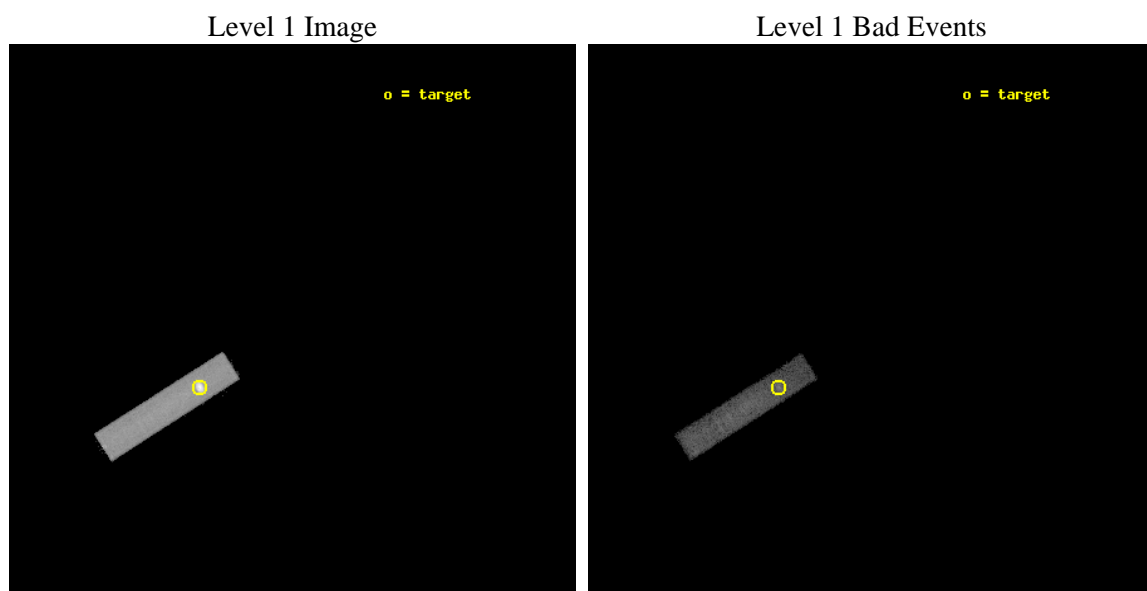
seq_num	480115	Sequence number
obs_id	1165	Observation id
title	 	Proposal title
observer	Dr. CXC Calibration	Principal investigator
object	LMC X-1	Source name
ra_targ	84.914583	Observer's specified target RA
dec_targ	-69.743611	Observer's specified target Dec
ra_nom	83.911803409729	Nominal RA
dec_nom	-69.526327832927	Nominal Dec
roll_nom	327.61693226094	Nominal Roll
revision	6	Processing version of data
ontime	2199.6500799134	[s]
livetime	2184.5155429548	Ontime multiplied by DTCOR
l2events	103346	Number of level 2 events



2 OBI

2.1 OBI

2.1.1 Images



2.1.2 Parameters

obi_num	1	Obi number	sched_exp_time	2000.000000	Scheduled observation exposure time
ascdsver	8.1.2	Processing system revision	ontime	2199.6500799134	[s]
caldbver	4.1.4	 	l1events	145785	Number of level 1 events
date	2009-12-02T19:07:06	Date and time of file creation			
revision	5	Processing version of data			

2.1.3 Events

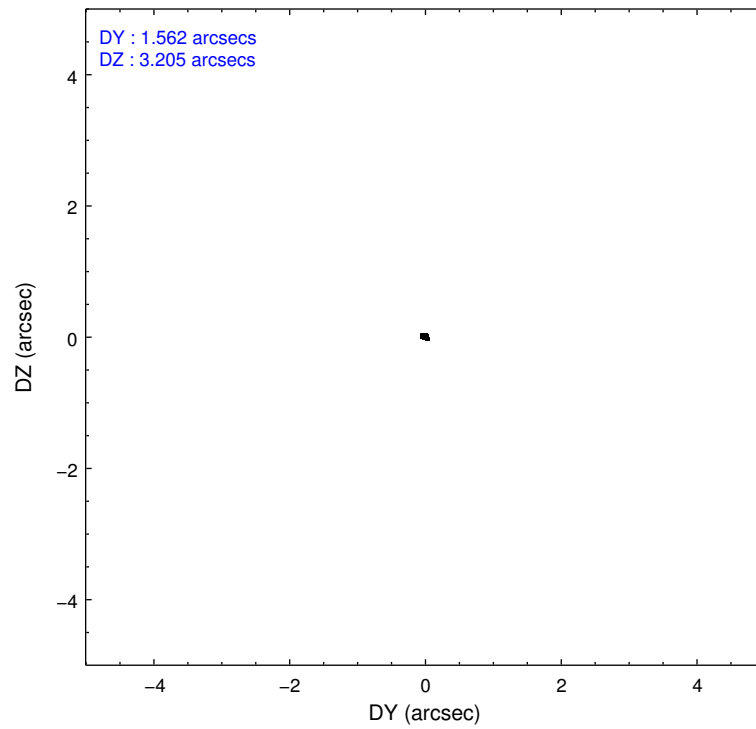
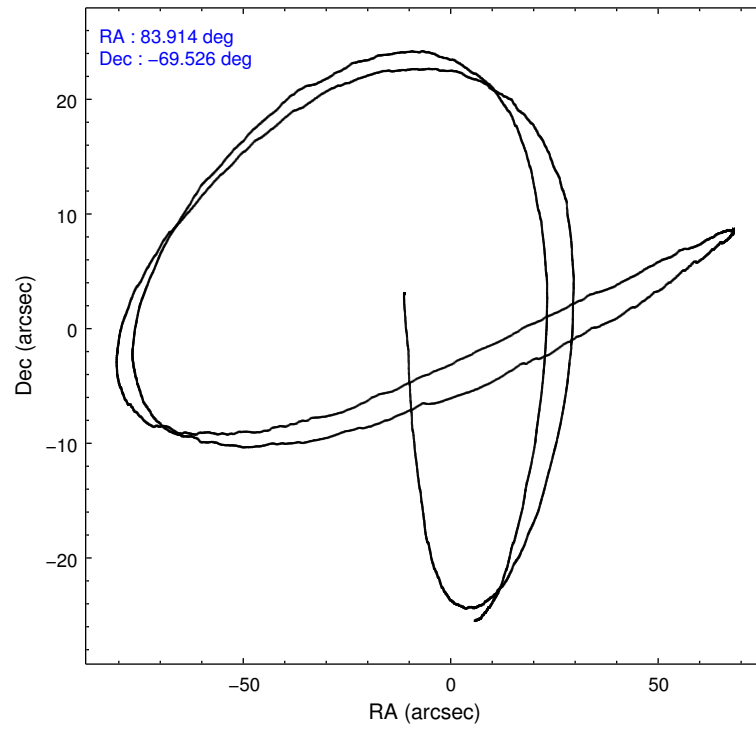
Level 1 Events

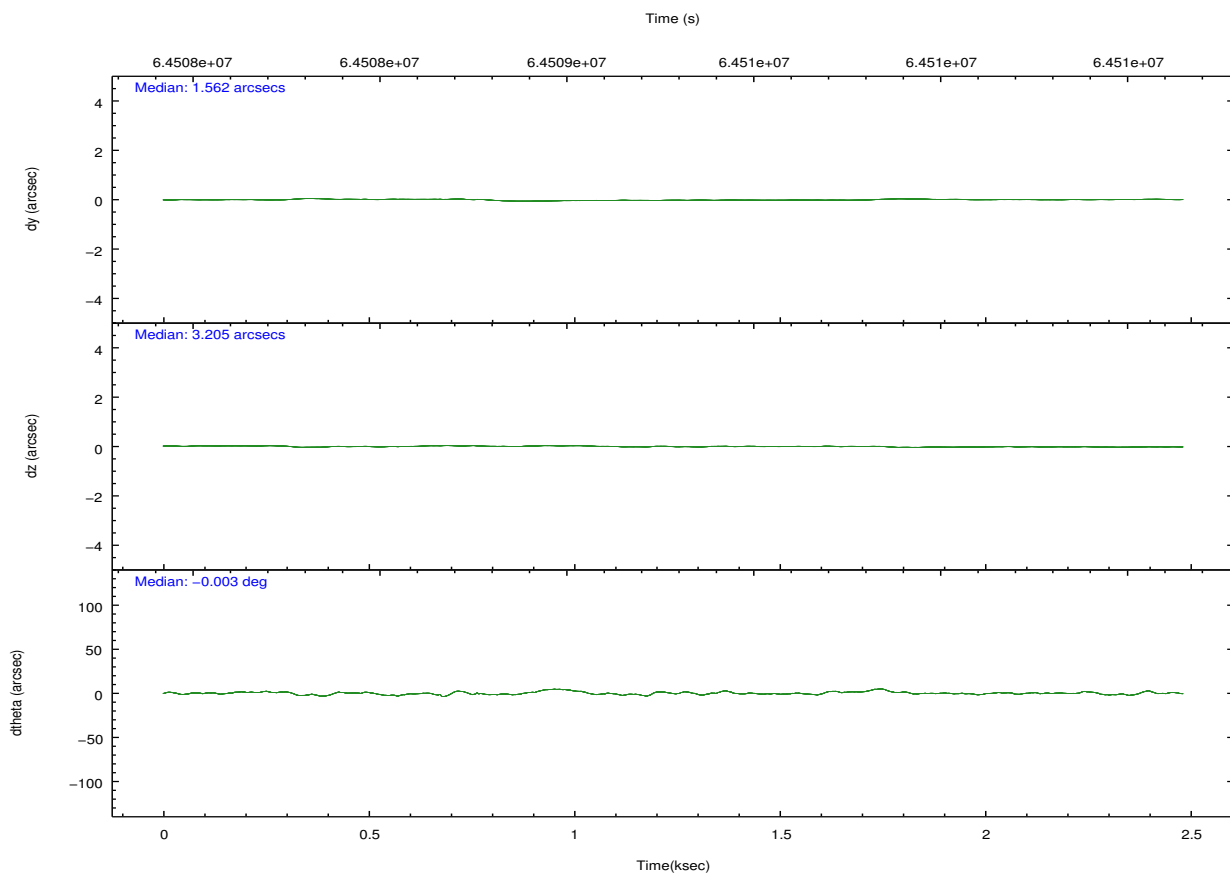
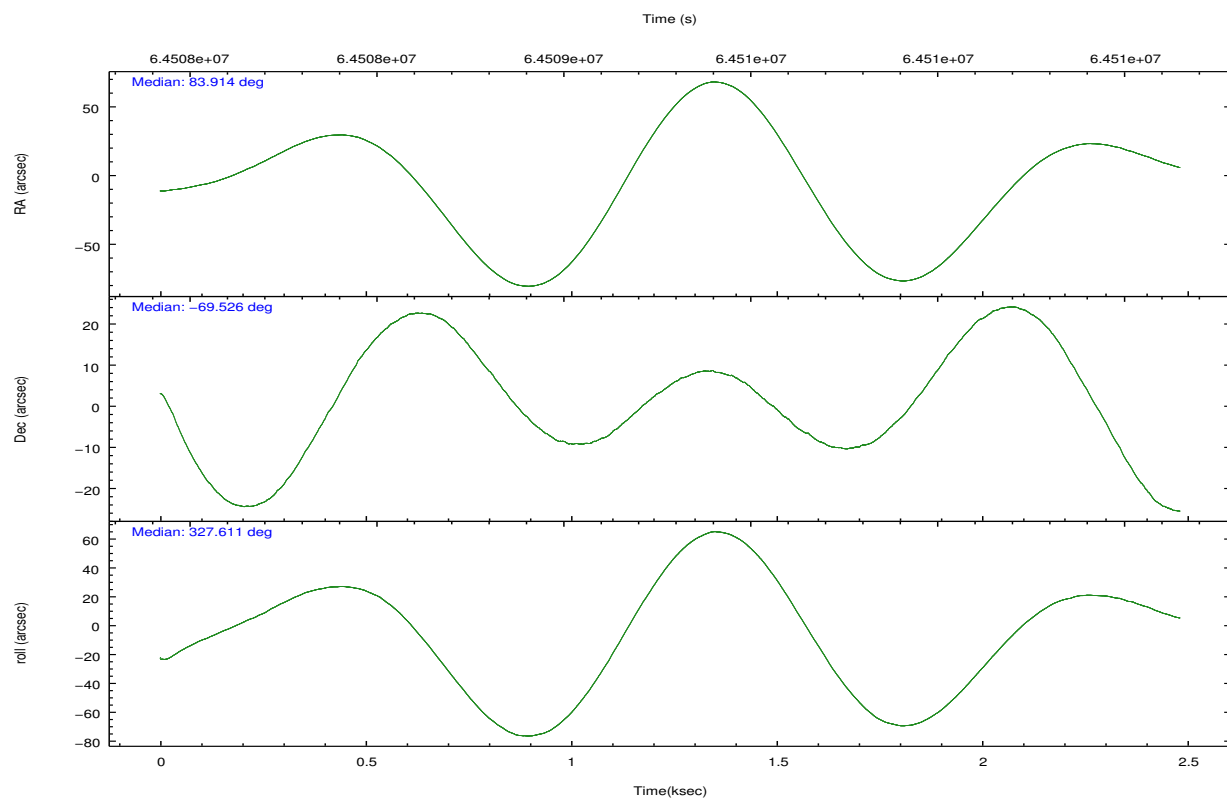
	segment 1	segment 2	segment 3
level 1 events	0	56	145729
rejected events	0	38	33441
rejected %	0%	67%	22%

2.2 Compared Parameters

Parameter	Planned	Actual	Parameter	Planned	Actual
Instrument	HRC	HRC	Obspar format version number	6	6
Detector	HRC-S	HRC-S	Obspar file type	PREDICTED	ACTUAL
Grating	NONE	NONE	Obspar update status	NONE	UPDATED
Data mode	OBSERVING	OBSERVING			
Observation mode	POINTING	POINTING			
Pointing RA	83.828424	83.9118034097294			
Pointing Dec	-69.525716	-69.52632783292655			
Pointing Roll	327.471487	327.6169322609385			
SIM focus pos (mm)	-1.528523	-1.428180813131781			
SIM defocus (mm)	0.004813771043328752	0.1051558262725154			
SIM translation stage pos (mm)	250.455976	250.466033080201			
SIM translation stage offset (mm)	0	-0.01005468664627074			
Observation start time	64508524.184000	64507858.450006			
Observation start date	2000-01-17T15:01:00	2000-01-17T14:50:58			
Observation end time	64510524.184000	64510759.712611			
Observation end date	2000-01-17T15:34:20	2000-01-17T15:39:19			

2.3 Aspect



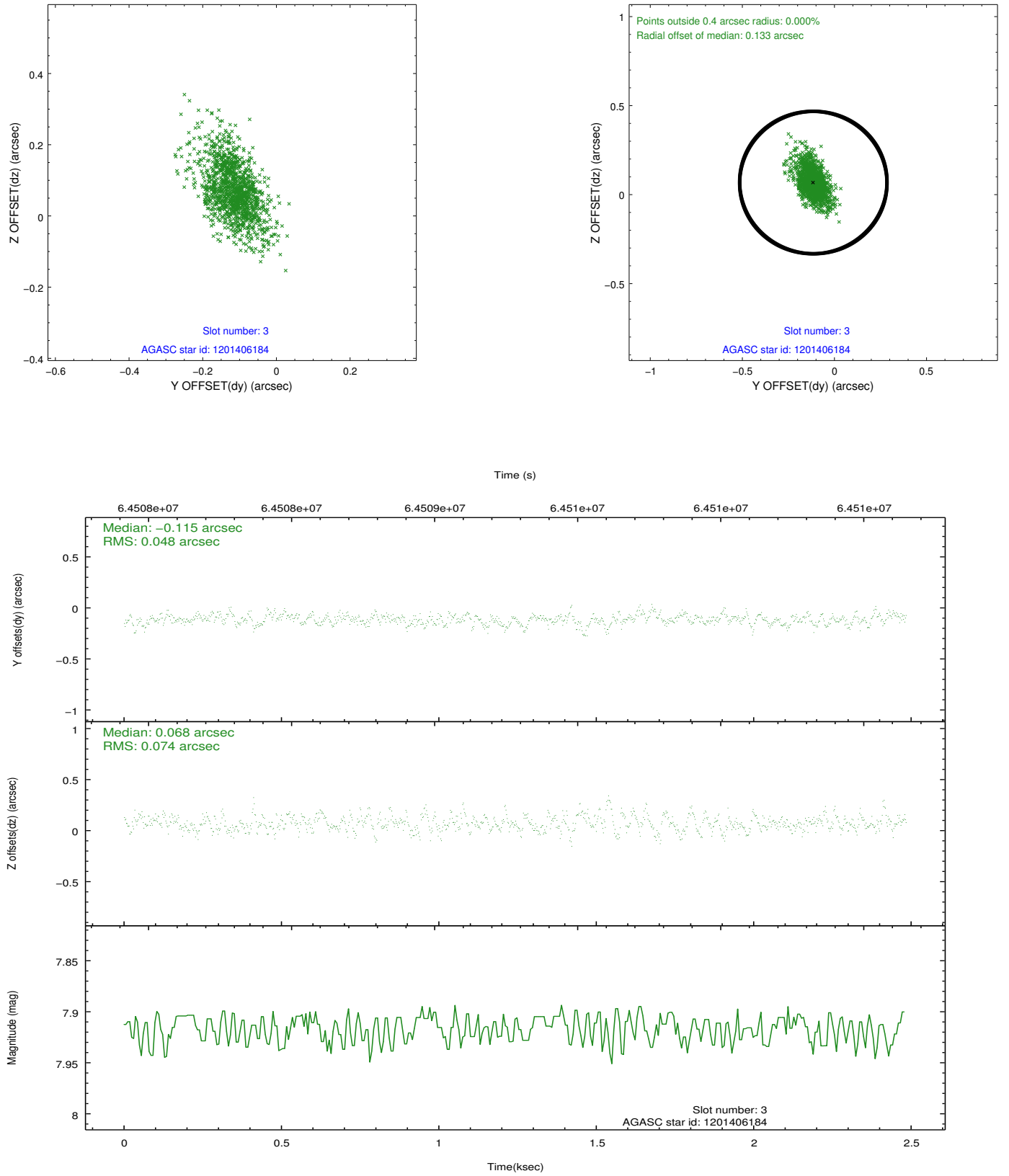


Slot Statistics

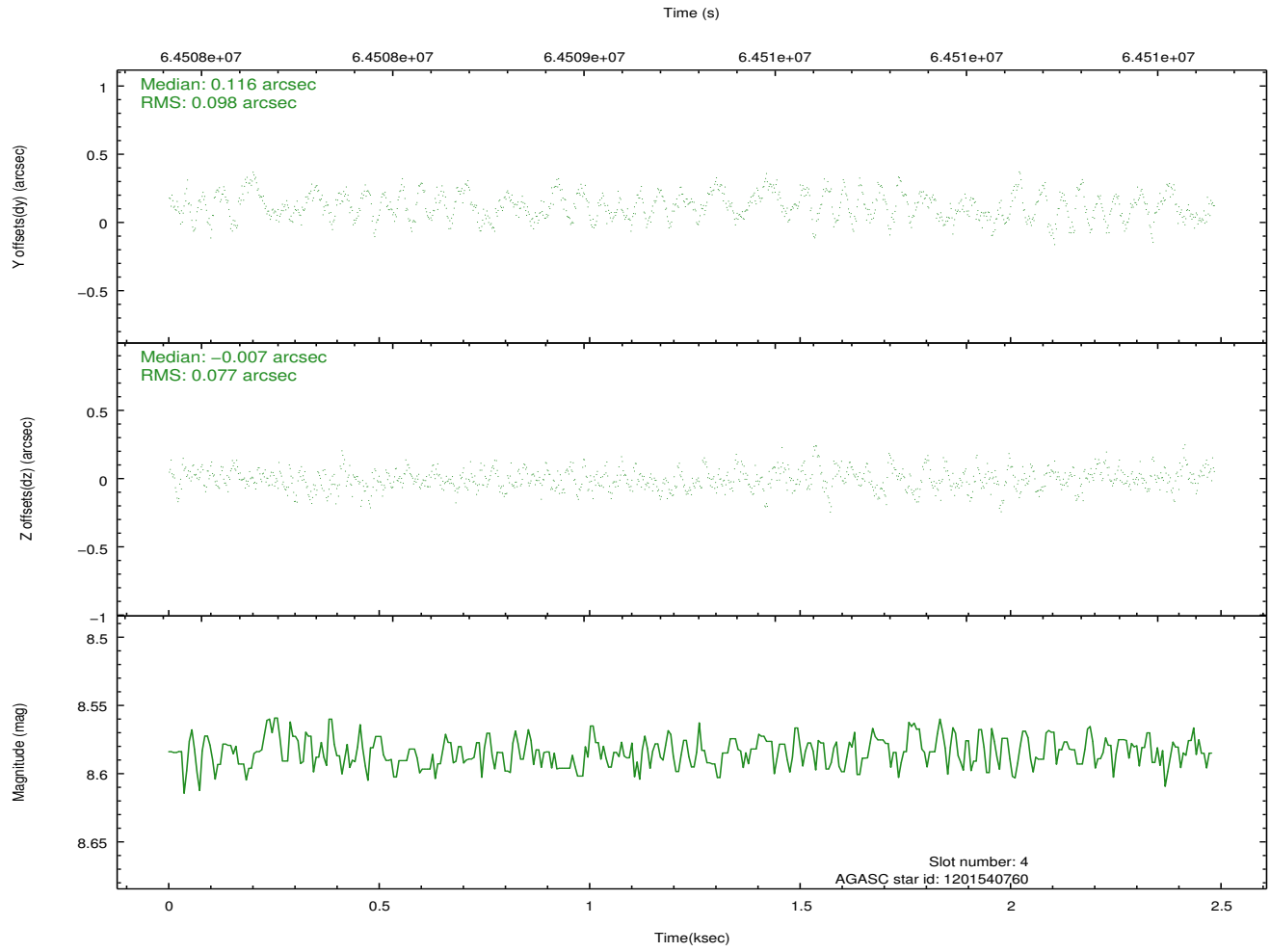
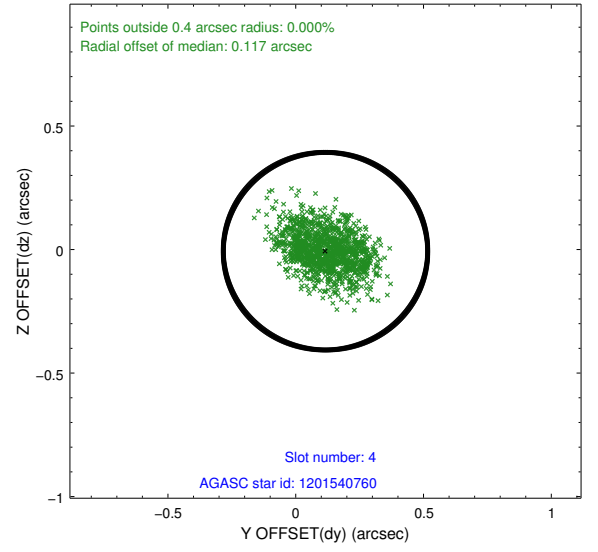
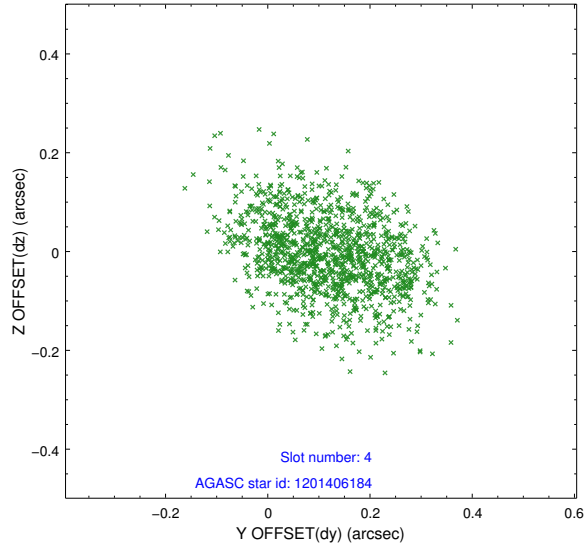
slot	status	id	mag	n_pts	med_dy	med_dz	dr1	dr2	ra	dec	mean_y	mean_z
0	FID	HRC-S-1	6.97	606	0.110	-0.055	0.007	0.013	0.000000	0.000000	-1155.60	-451.56
1	FID	HRC-S-3	6.99	606	0.158	-0.150	0.009	0.016	0.000000	0.000000	-1160.17	577.13
2	FID	HRC-S-4	6.92	606	0.119	-0.092	0.005	0.009	0.000000	0.000000	1240.76	581.42
3	GUIDE	1201406184	7.92	1212	-0.115	0.068	0.087	0.166	82.503234	-69.975517	-498.54	-2258.19
4	GUIDE	1201540760	8.58	1212	0.116	-0.007	0.135	0.209	84.403691	-70.419249	2315.03	-2342.92
5	GUIDE	1200885760	9.49	1209	0.065	-0.090	0.140	0.223	83.723637	-68.777667	-1563.29	2195.12
6	GUIDE	1200886544	9.57	1211	-0.020	0.040	0.115	0.193	82.995430	-69.160893	-1604.88	529.57
7	GUIDE	1201017424	10.18	1210	-0.050	-0.014	0.152	0.235	85.854985	-69.248506	1662.08	2196.09

2.4 Star Slots

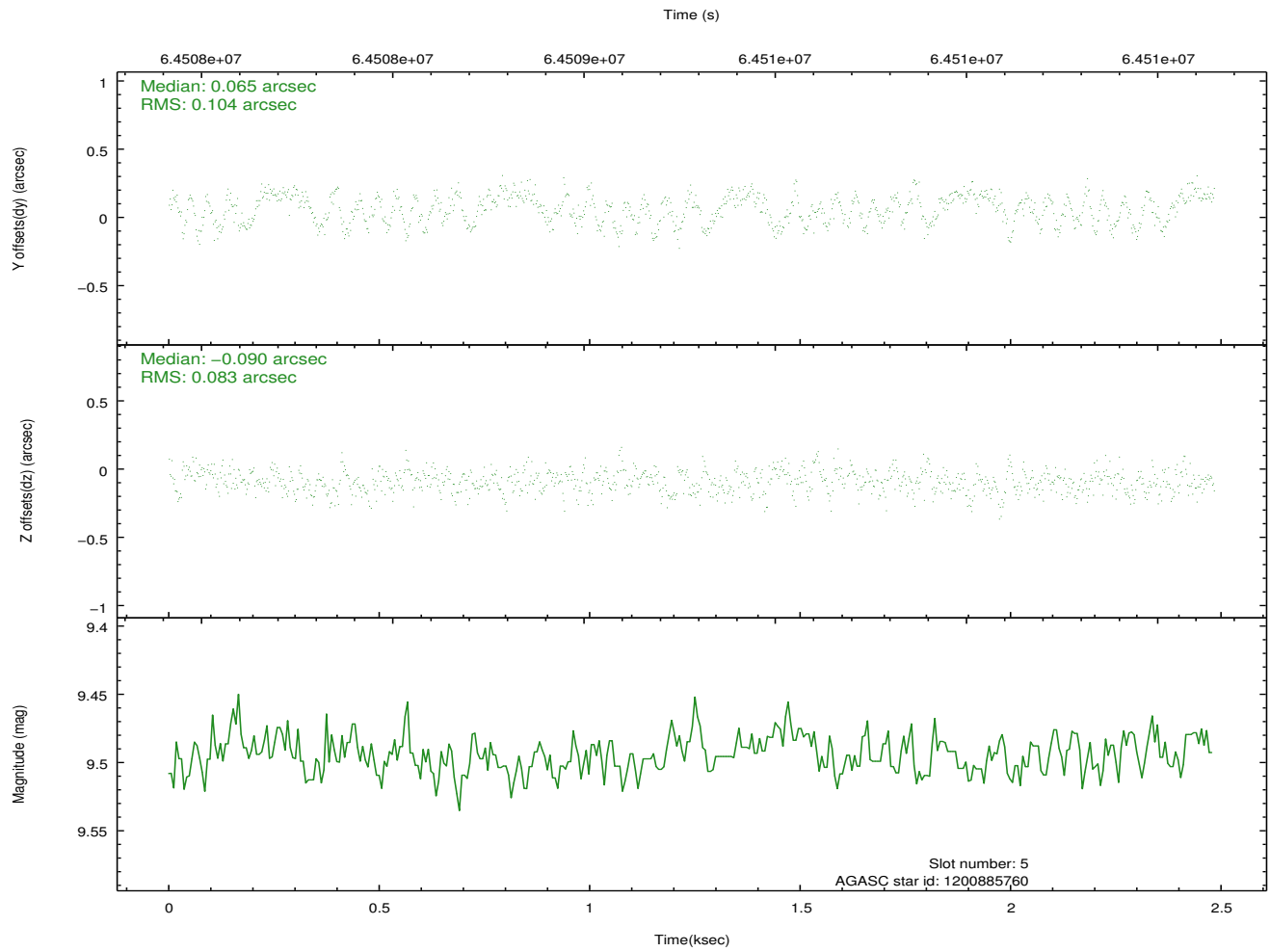
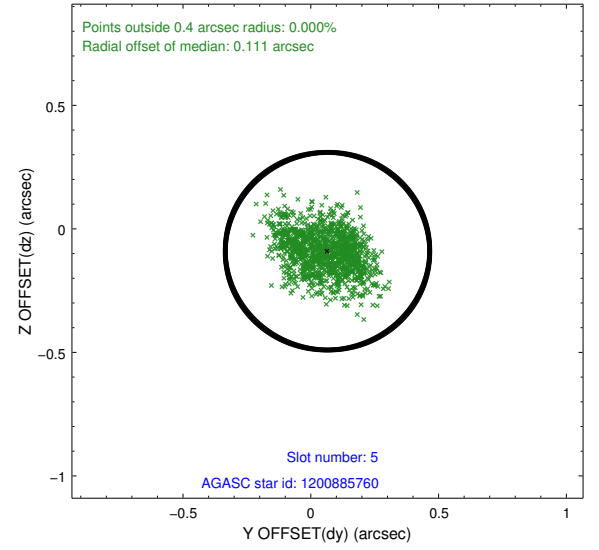
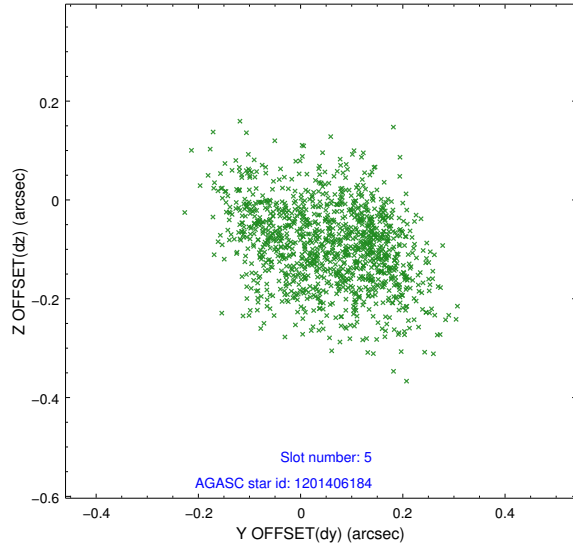
2.4.1 Slot 3



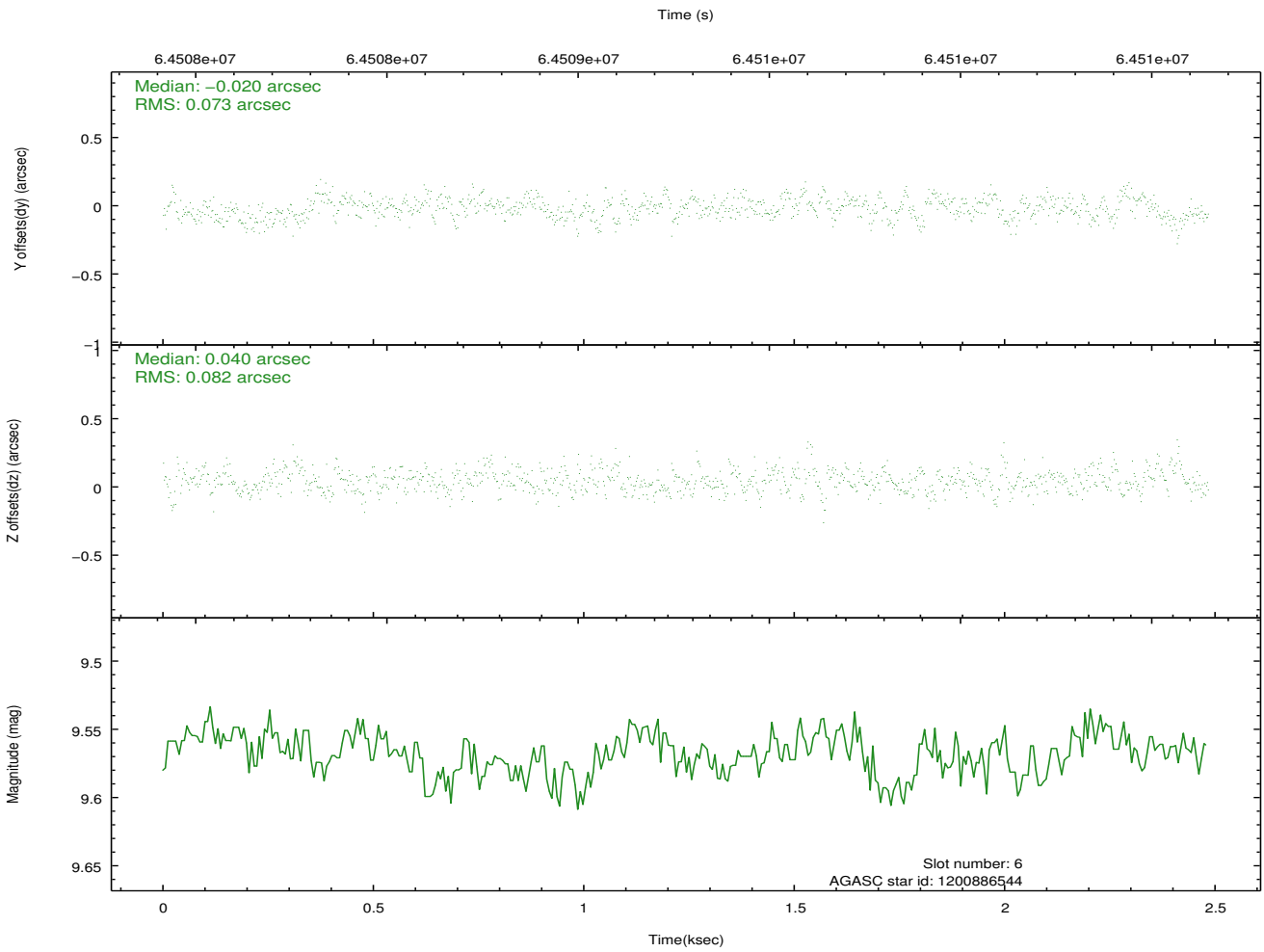
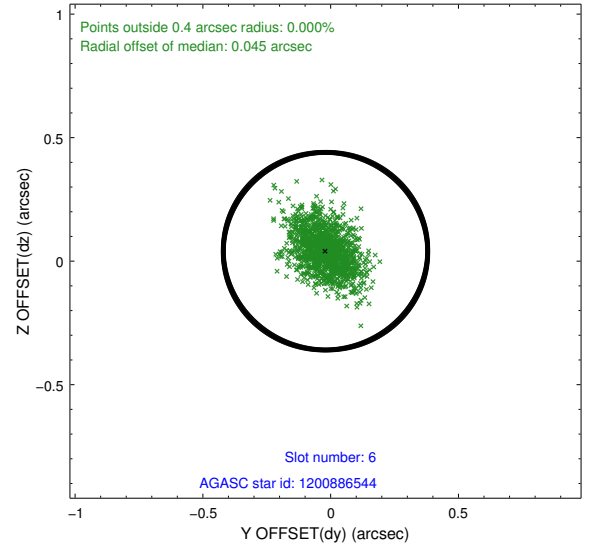
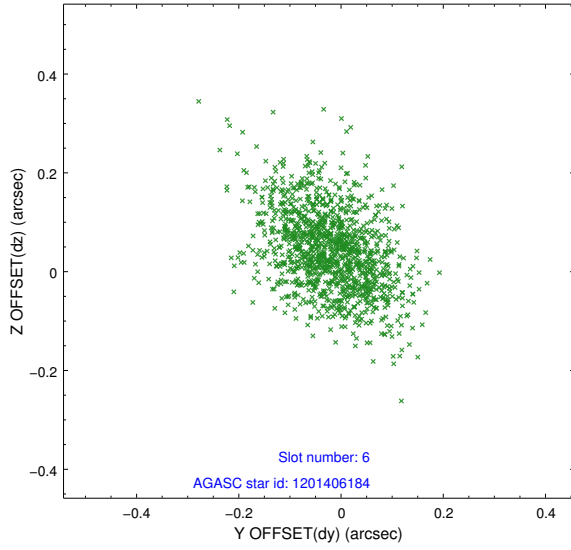
2.4.2 Slot 4



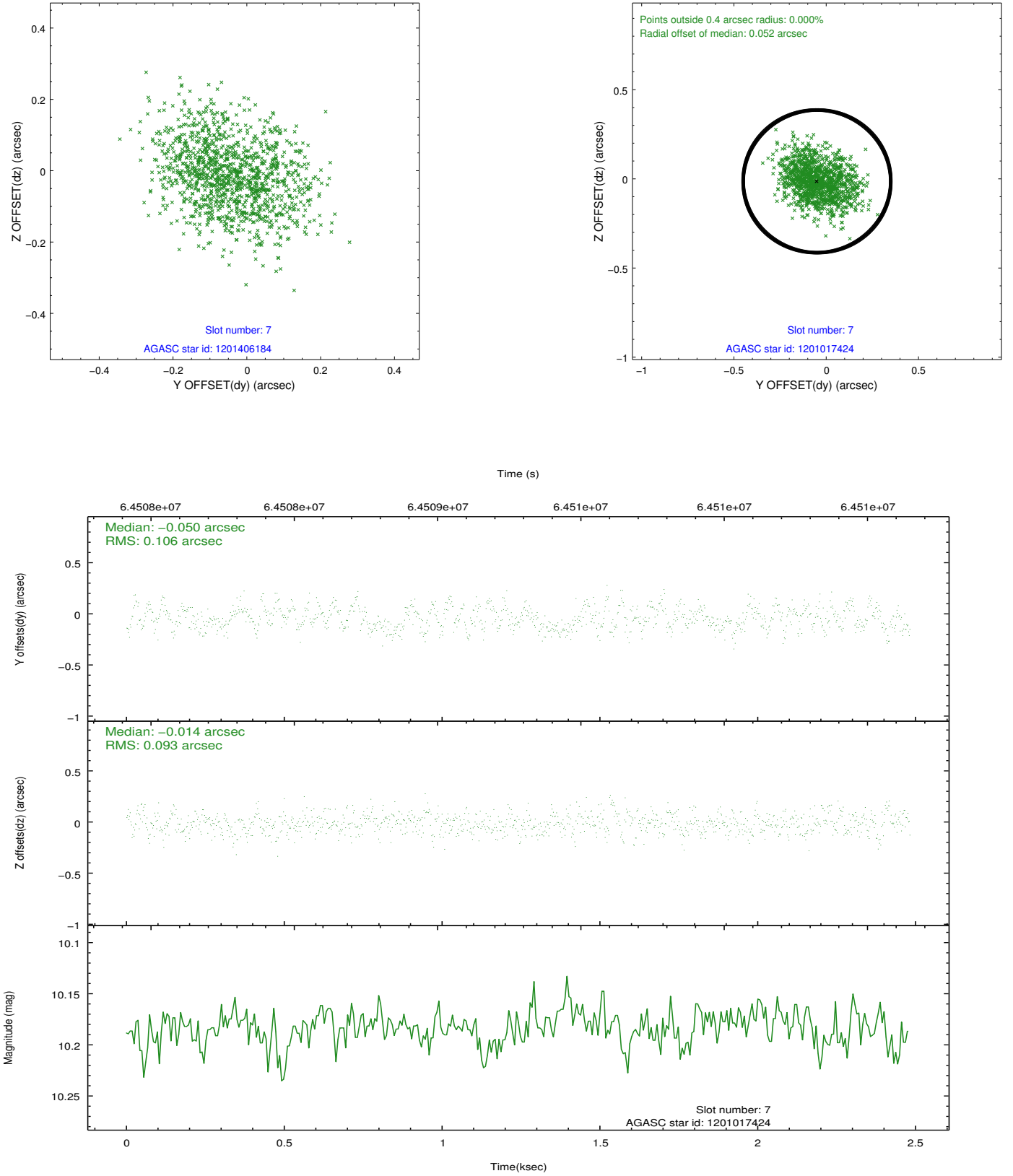
2.4.3 Slot 5



2.4.4 Slot 6

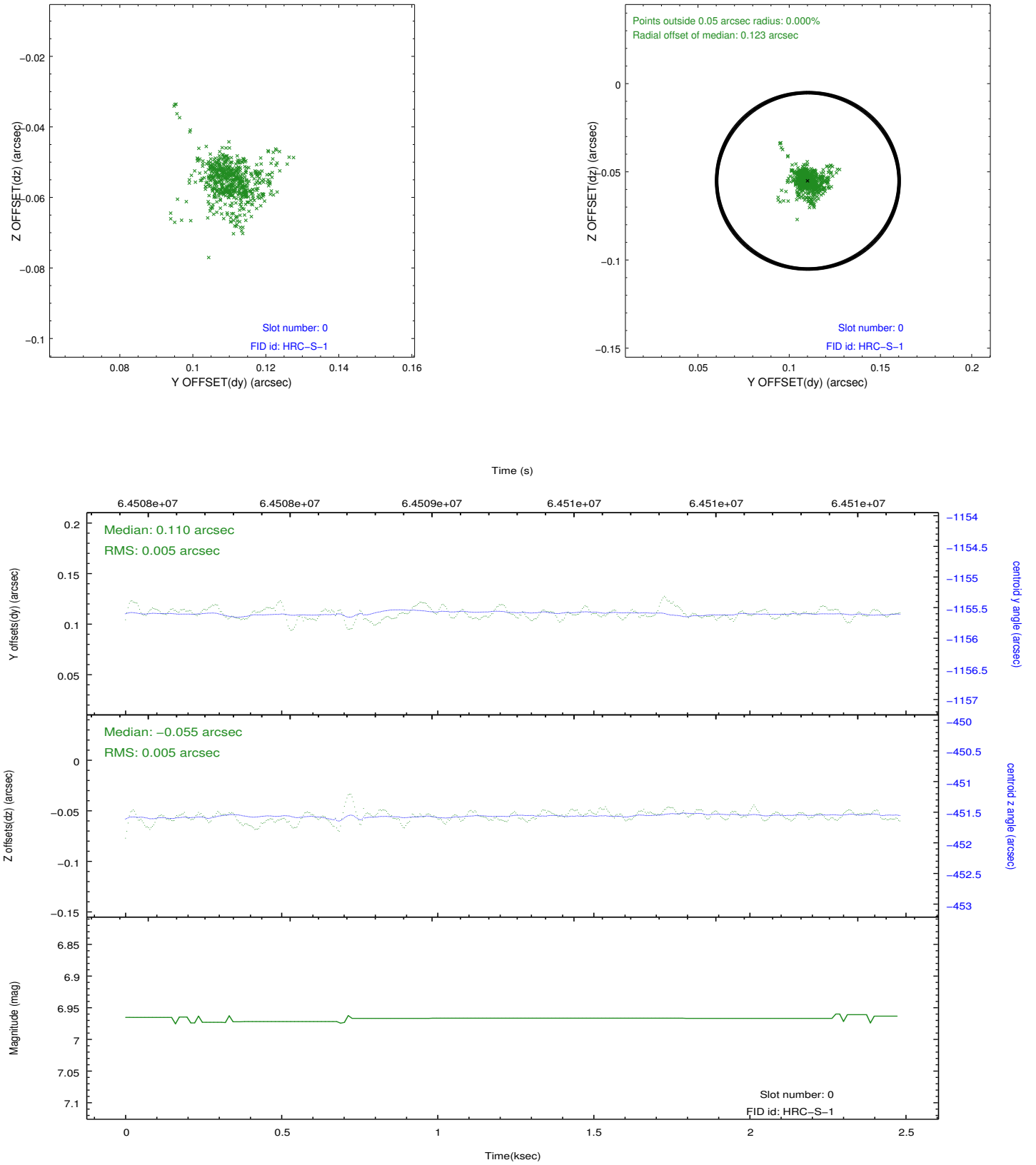


2.4.5 Slot 7

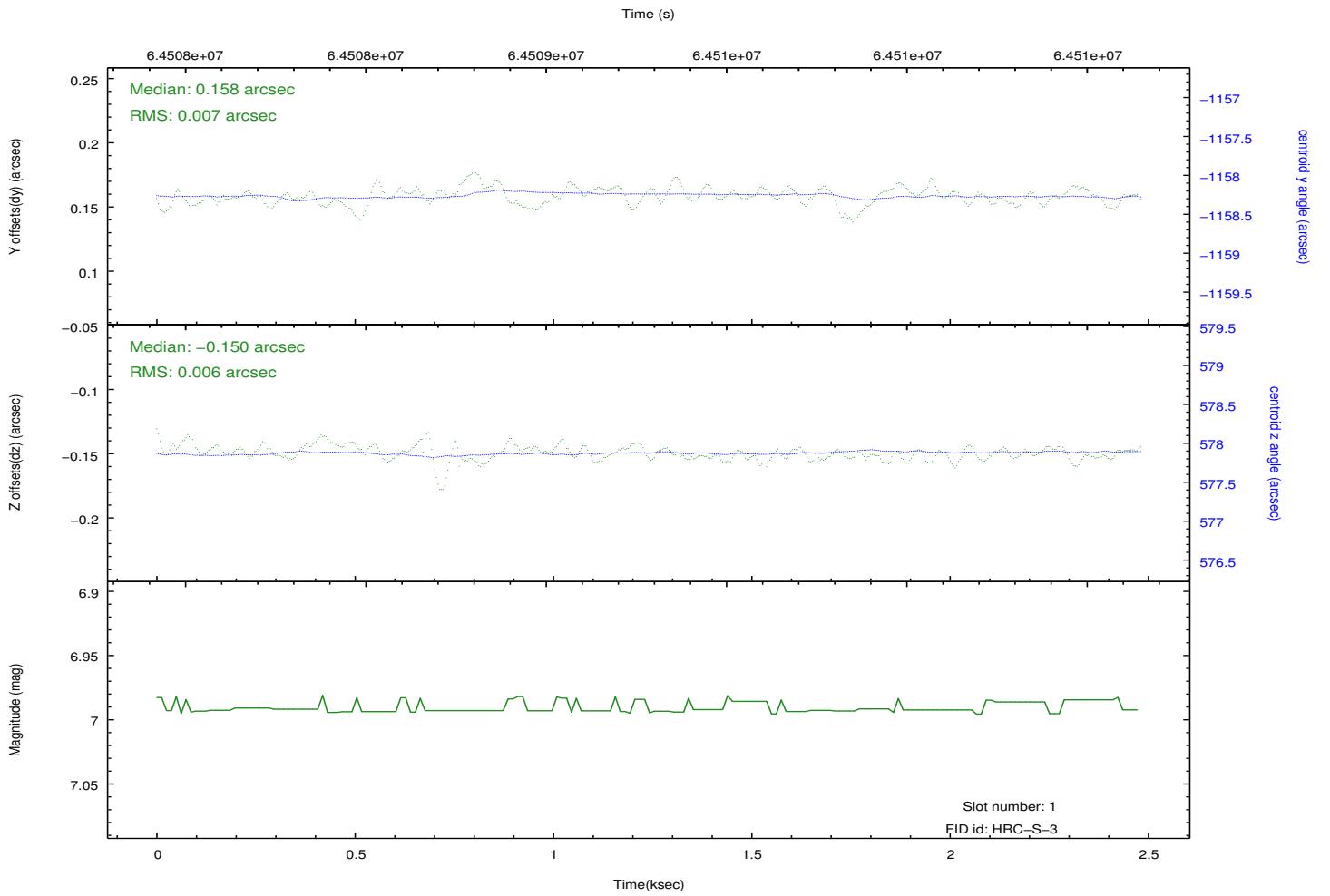
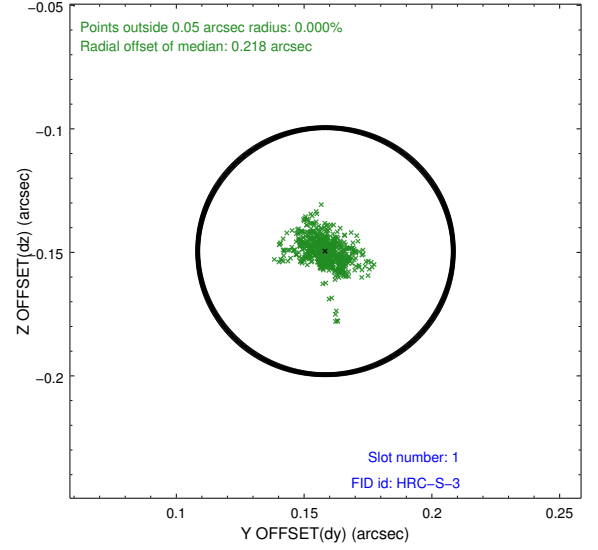
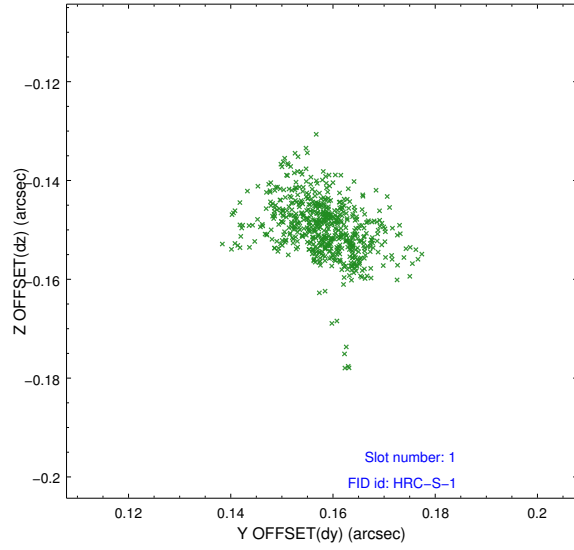


2.5 FID Slots

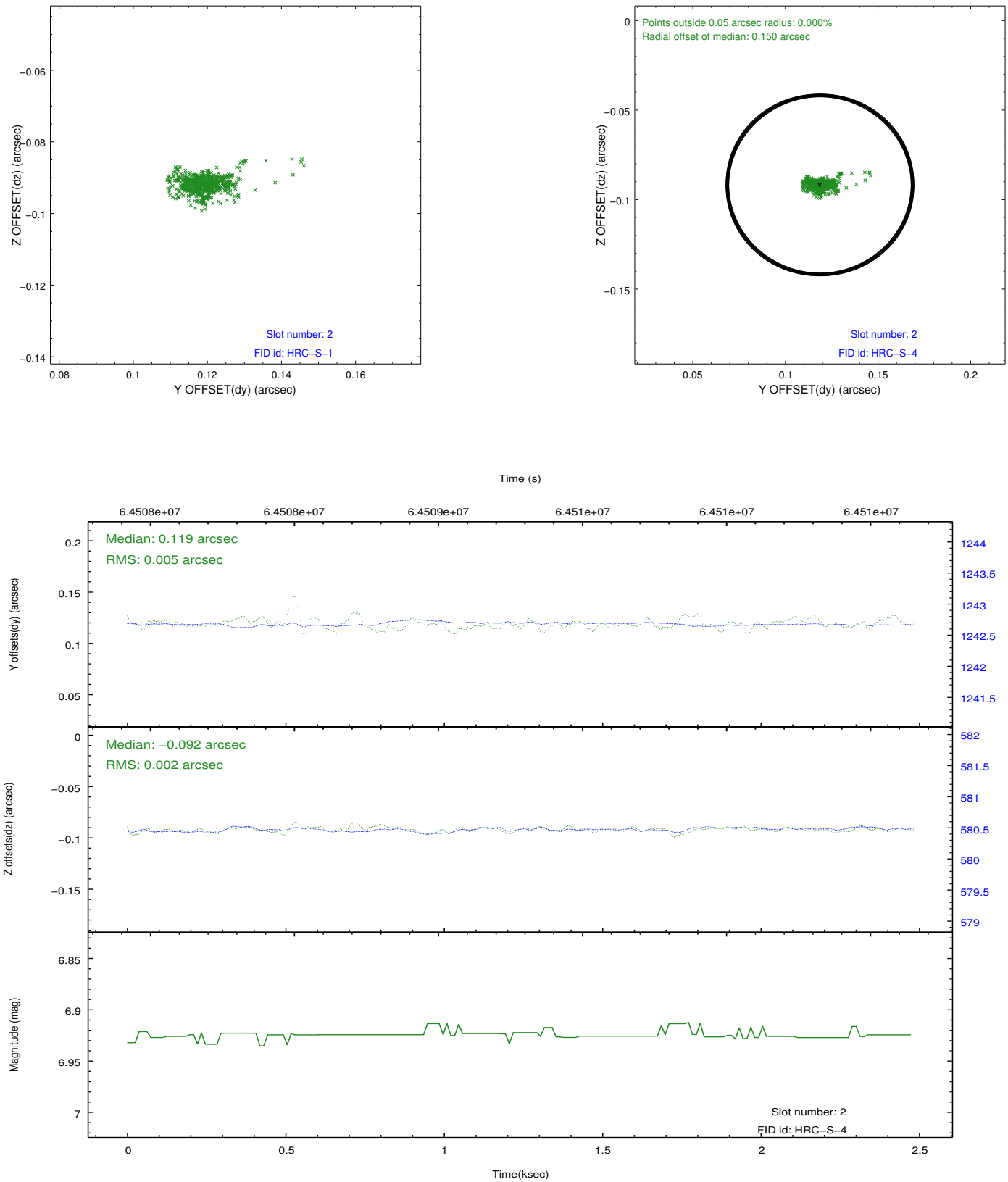
2.5.1 Slot 0



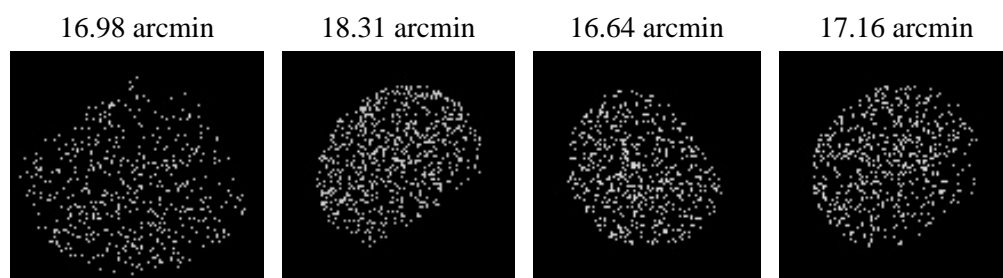
2.5.2 Slot 1



2.5.3 Slot 2



3 Point Sources



A Summary

A.1 Status

V&V Scientist	Joy Nichols
V&V Date (YYYY-MM-DD)	2009.12.03
V&V Edition	1
V&V Disposition and Status	OK
V&V Charge Time	2.199

A.2 Comments

Target is very off-axis.