

V&V Reference Report

L2 ASCDS Version : 8.1.2

Observation 1162 - L2 Version 6

Chandra X-Ray Center

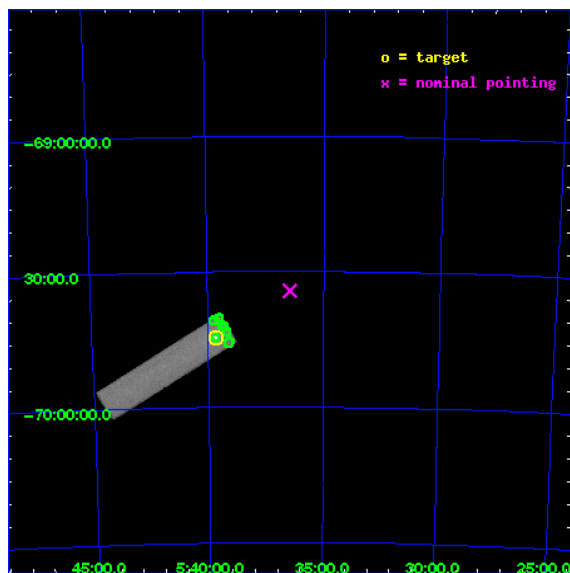
L2 Processing Date : Dec 2 2009

Contents

1	Front	2
2	OBI	3
2.1	OBI	3
2.1.1	Images	3
2.1.2	Parameters	4
2.1.3	Events	4
2.2	Compared Parameters	5
2.3	Aspect	6
2.4	Star Slots	9
2.4.1	Slot 3	9
2.4.2	Slot 4	10
2.4.3	Slot 5	11
2.4.4	Slot 6	12
2.4.5	Slot 7	13
2.5	FID Slots	14
2.5.1	Slot 0	14
2.5.2	Slot 1	15
2.5.3	Slot 2	16
3	Point Sources	17
A	Summary	18
A.1	Status	18
A.2	Comments	18

1 Front

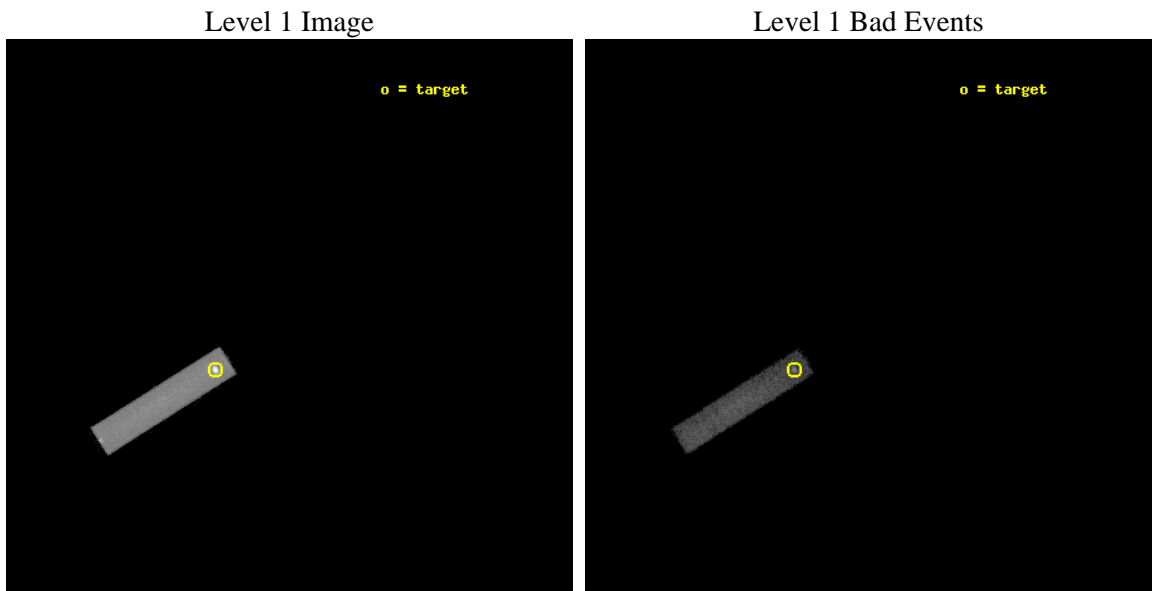
seq_num	480112	Sequence number
obs_id	1162	Observation id
title	 	Proposal title
observer	Dr. CXC Calibration	Principal investigator
object	LMC X-1	Source name
ra_targ	84.914583	Observer's specified target RA
dec_targ	-69.743611	Observer's specified target Dec
ra_nom	84.112460332056	Nominal RA
dec_nom	-69.571413769665	Nominal Dec
roll_nom	327.89725831897	Nominal Roll
revision	6	Processing version of data
ontime	2202.9813300371	[s]
livetime	2186.705227239	Ontime multiplied by DTCOR
l2events	114467	Number of level 2 events



2 OBI

2.1 OBI

2.1.1 Images



2.1.2 Parameters

obi_num	1	Obi number	sched_exp_time	2000.000000	Scheduled observation exposure time
ascdsver	8.1.2	Processing system revision	ontime	2202.9813300371	[s]
caldbver	4.1.4	 	l1events	157425	Number of level 1 events
date	2009-12-02T18:55:06	Date and time of file creation			
revision	5	Processing version of data			

2.1.3 Events

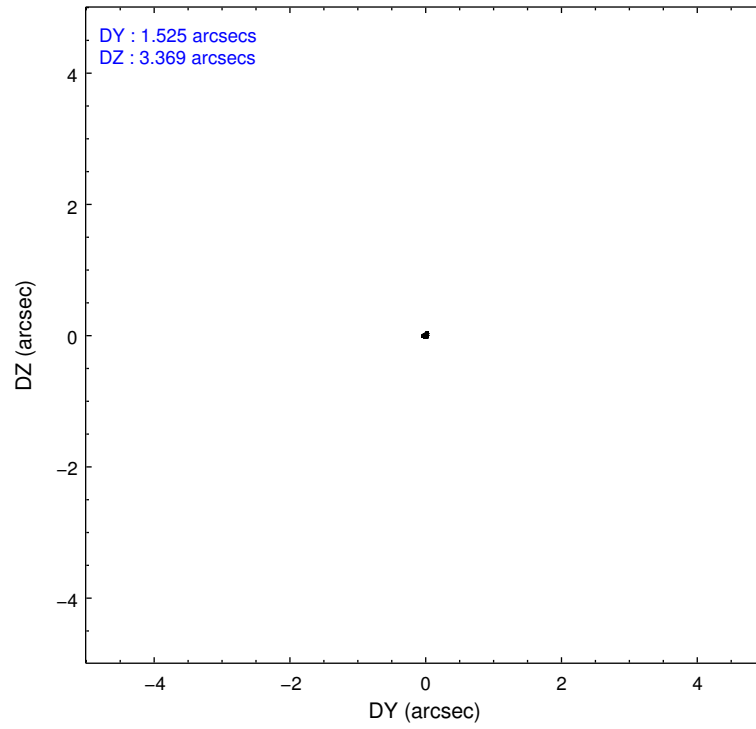
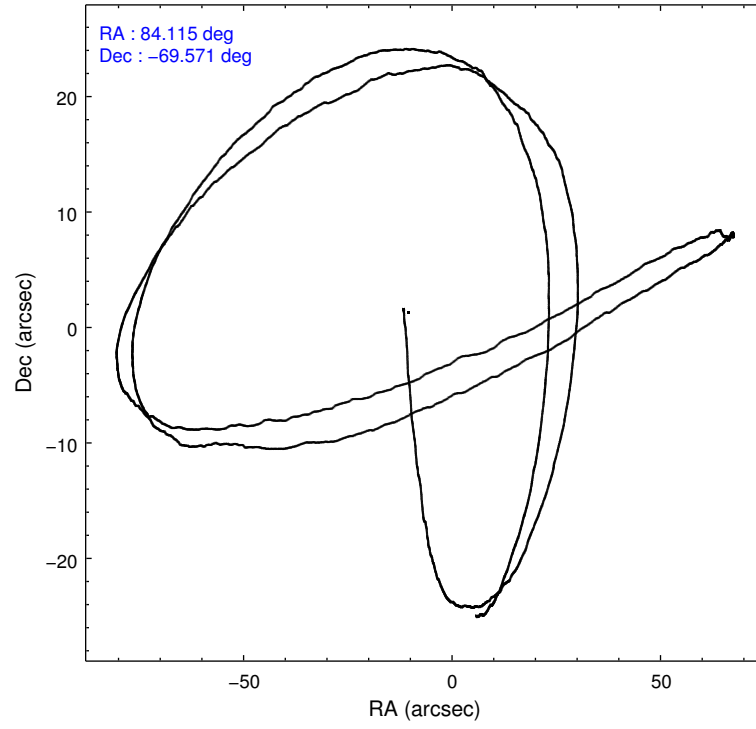
Level 1 Events

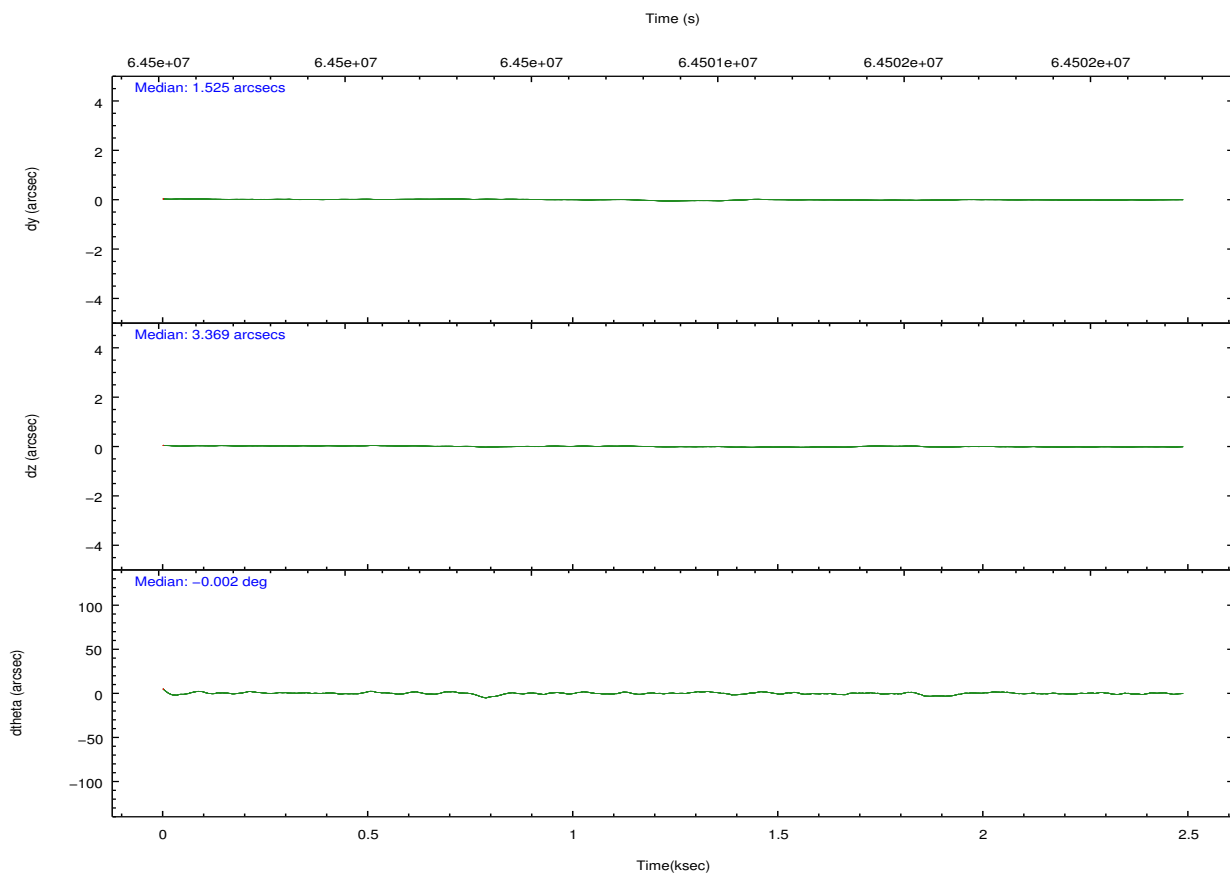
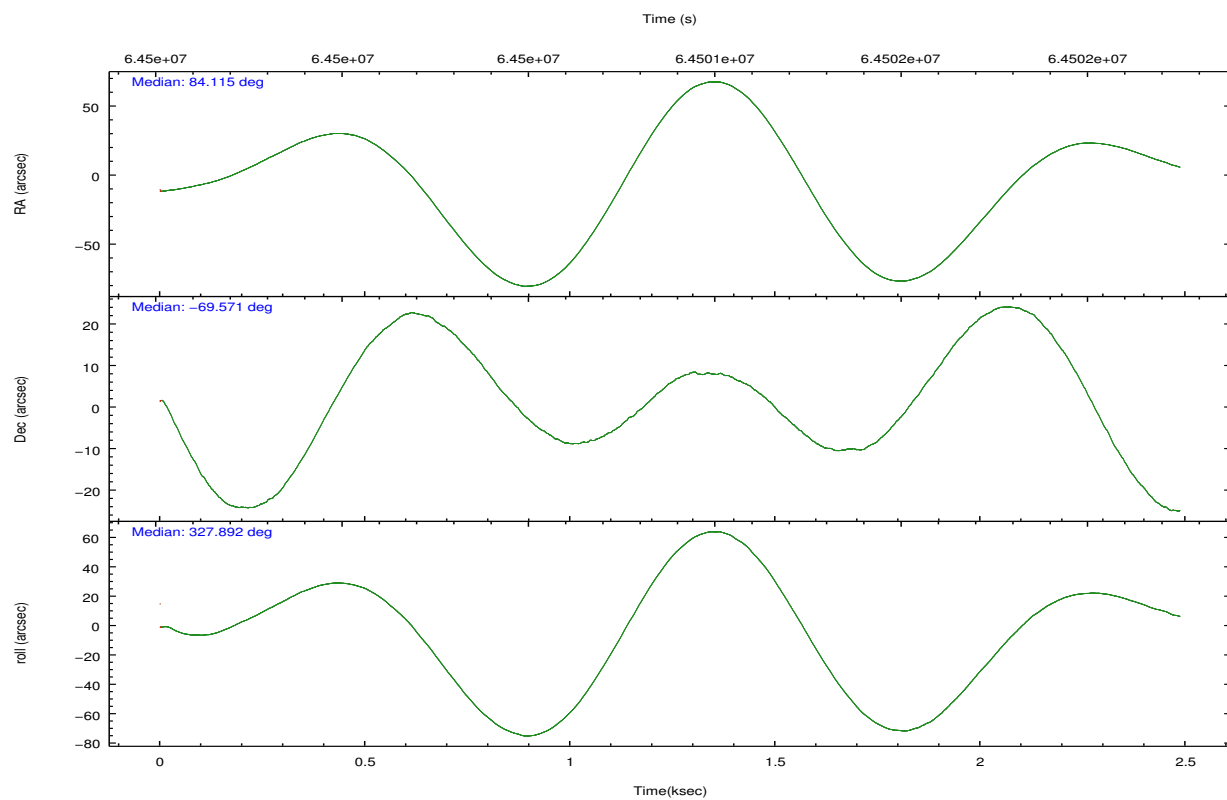
	segment 1	segment 2	segment 3
level 1 events	0	63	157362
rejected events	0	48	33030
rejected %	0%	76%	20%

2.2 Compared Parameters

Parameter	Planned	Actual	Parameter	Planned	Actual
Instrument	HRC	HRC	Obspar format version number	6	6
Detector	HRC-S	HRC-S	Obspar file type	PREDICTED	ACTUAL
Grating	NONE	NONE	Obspar update status	NONE	UPDATED
Data mode	OBSERVING	OBSERVING			
Observation mode	POINTING	POINTING			
Pointing RA	84.028915	84.1124603320558			
Pointing Dec	-69.570906	-69.57141376966479			
Pointing Roll	327.751636	327.8972583189667			
SIM focus pos (mm)	-1.528523	-1.428180813131781			
SIM defocus (mm)	0.004813771043328752	0.1051558262725154			
SIM translation stage pos (mm)	250.455976	250.466033080201			
SIM translation stage offset (mm)	0	-0.01005468664627074			
Observation start time	64500124.184000	64499458.574701			
Observation start date	2000-01-17T12:41:00	2000-01-17T12:30:58			
Observation end time	64502124.184000	64502257.849802			
Observation end date	2000-01-17T13:14:20	2000-01-17T13:17:37			

2.3 Aspect



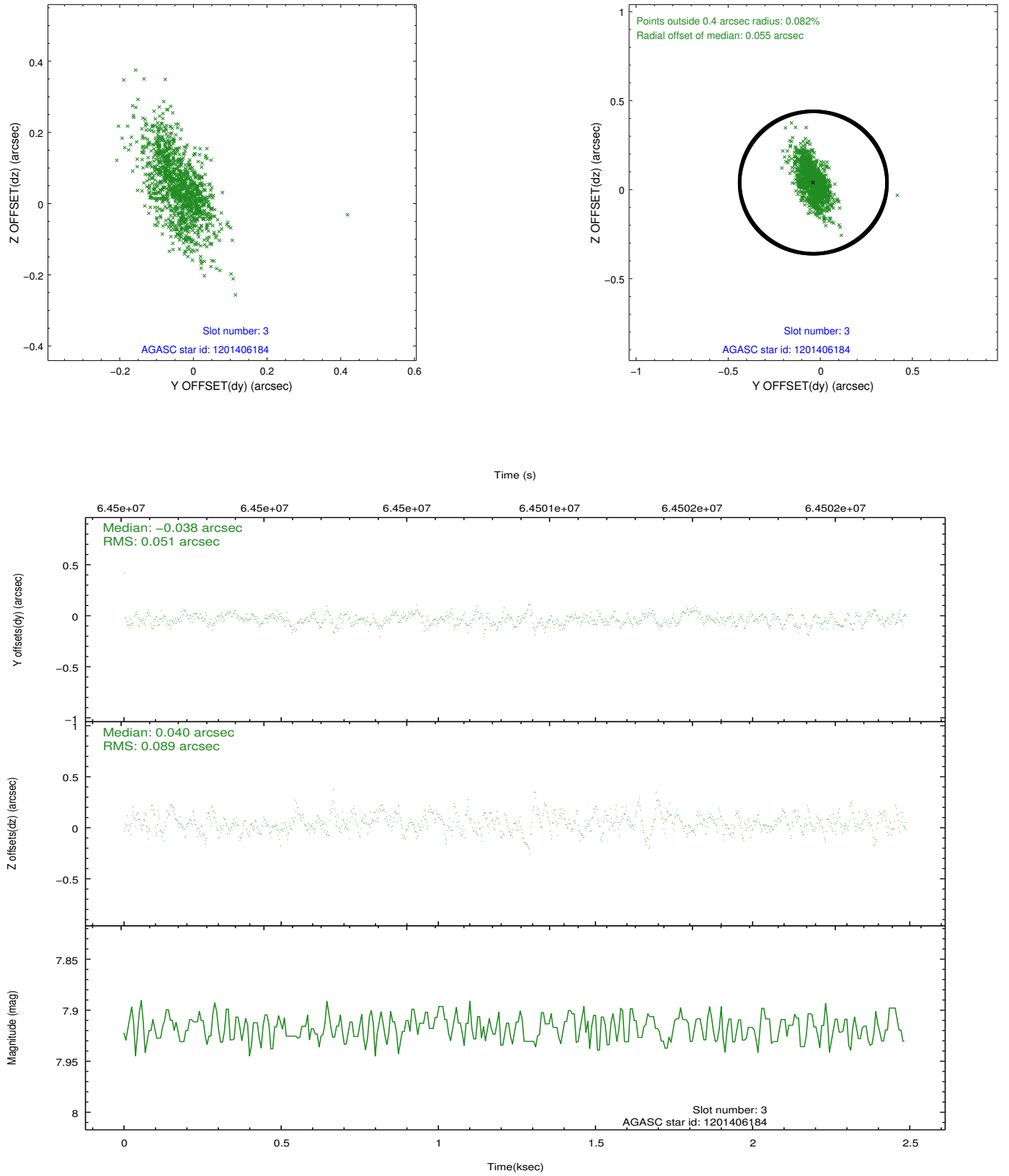


Slot Statistics

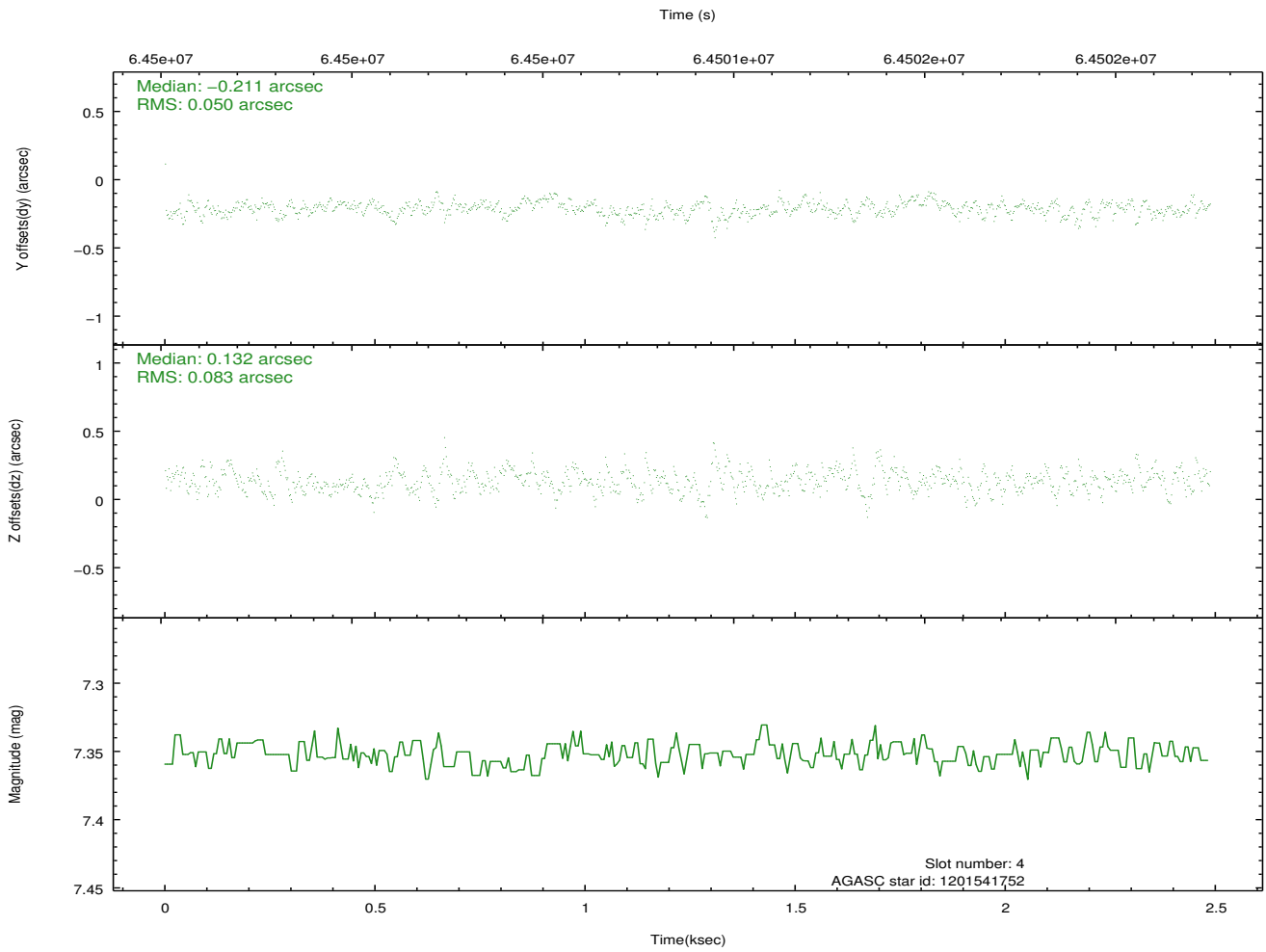
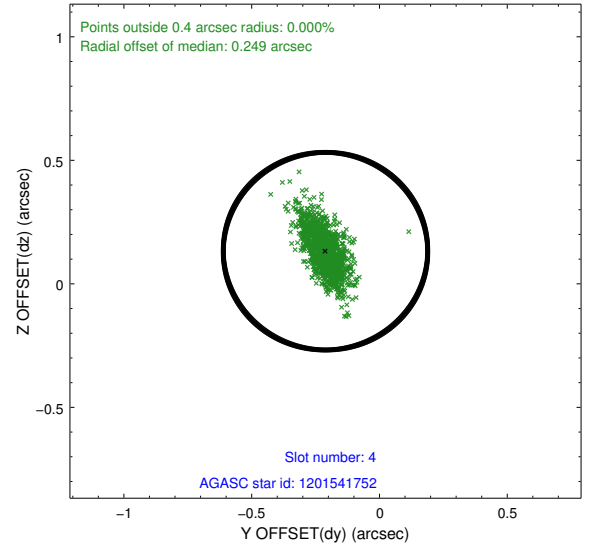
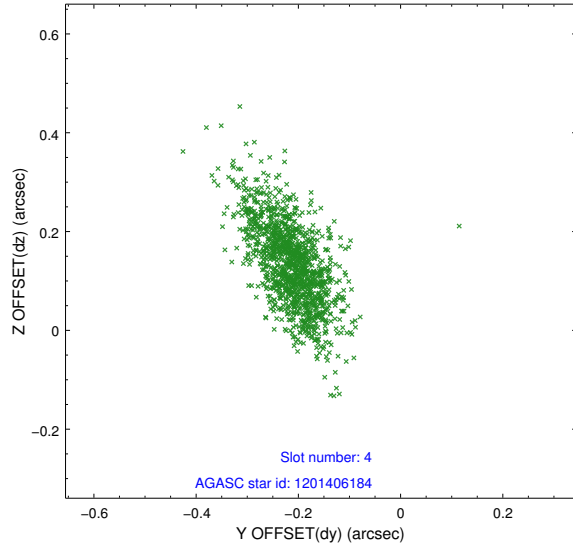
slot	status	id	mag	n_pts	med_dy	med_dz	dr1	dr2	ra	dec	mean_y	mean_z
0	FID	HRC-S-1	6.97	607	0.120	-0.056	0.006	0.011	0.000000	0.000000	-1155.56	-451.71
1	FID	HRC-S-3	6.99	607	0.148	-0.145	0.008	0.013	0.000000	0.000000	-1160.13	576.99
2	FID	HRC-S-4	6.94	607	0.121	-0.096	0.006	0.011	0.000000	0.000000	1240.81	581.22
3	GUIDE	1201406184	7.92	1214	-0.038	0.040	0.102	0.186	82.503234	-69.975517	-802.34	-2254.91
4	GUIDE	1201541752	7.35	1214	-0.211	0.132	0.098	0.175	85.373891	-70.033762	2294.39	-543.58
5	GUIDE	1201410616	9.34	1213	0.104	-0.007	0.133	0.269	82.516808	-69.784406	-1167.86	-1673.59
6	GUIDE	1200885760	9.49	1214	0.138	-0.101	0.144	0.227	83.723637	-68.777667	-1862.71	2200.76
7	GUIDE	1201017424	10.18	1212	0.019	-0.071	0.165	0.258	85.854985	-69.248506	1365.31	2197.18

2.4 Star Slots

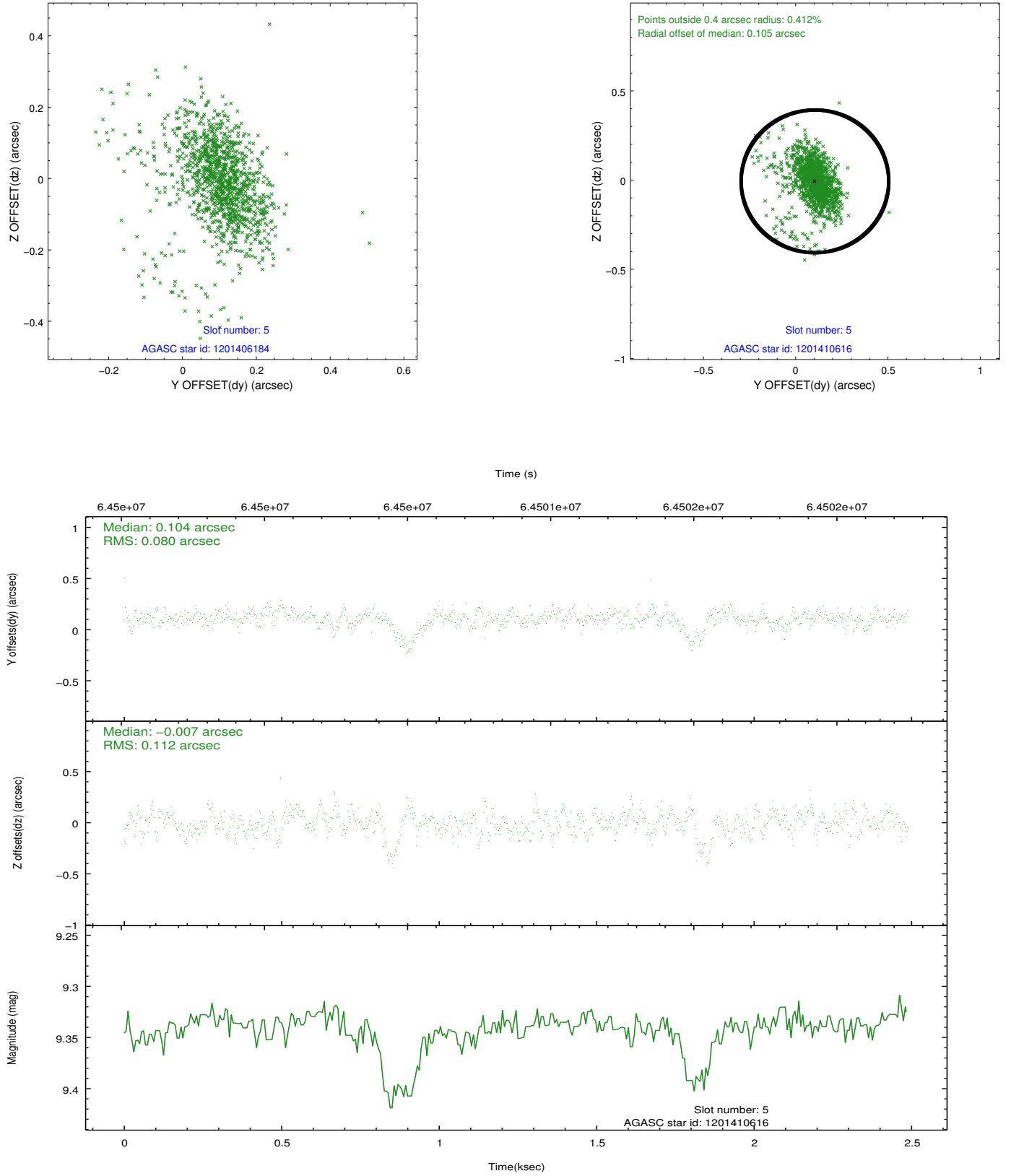
2.4.1 Slot 3



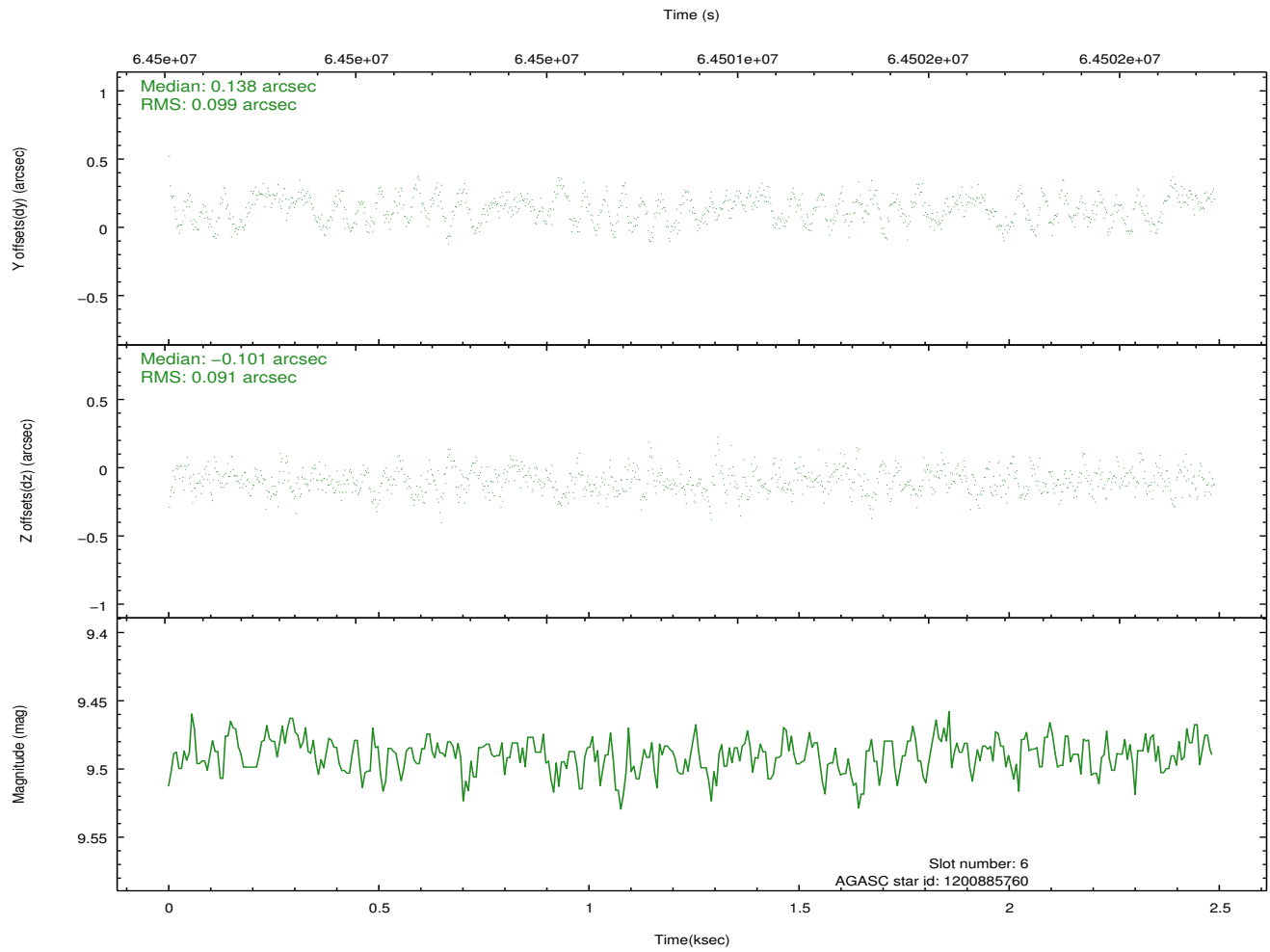
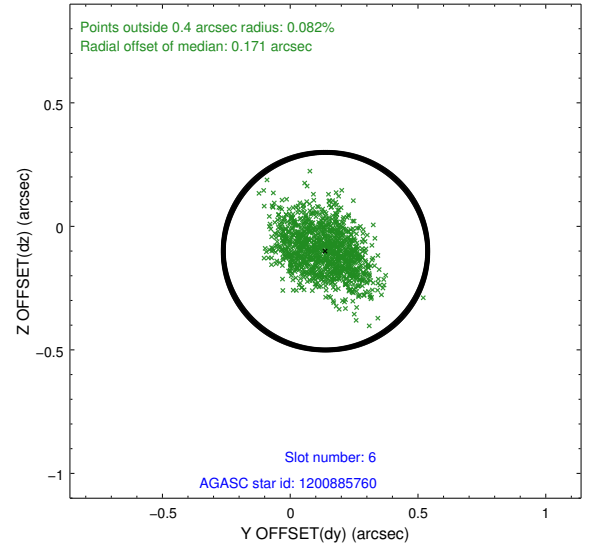
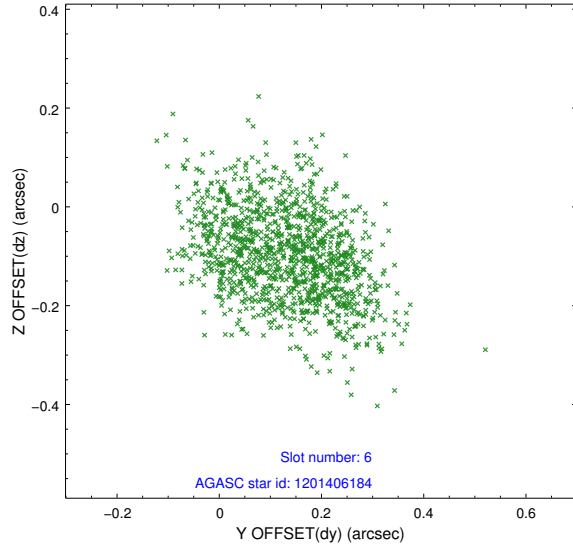
2.4.2 Slot 4



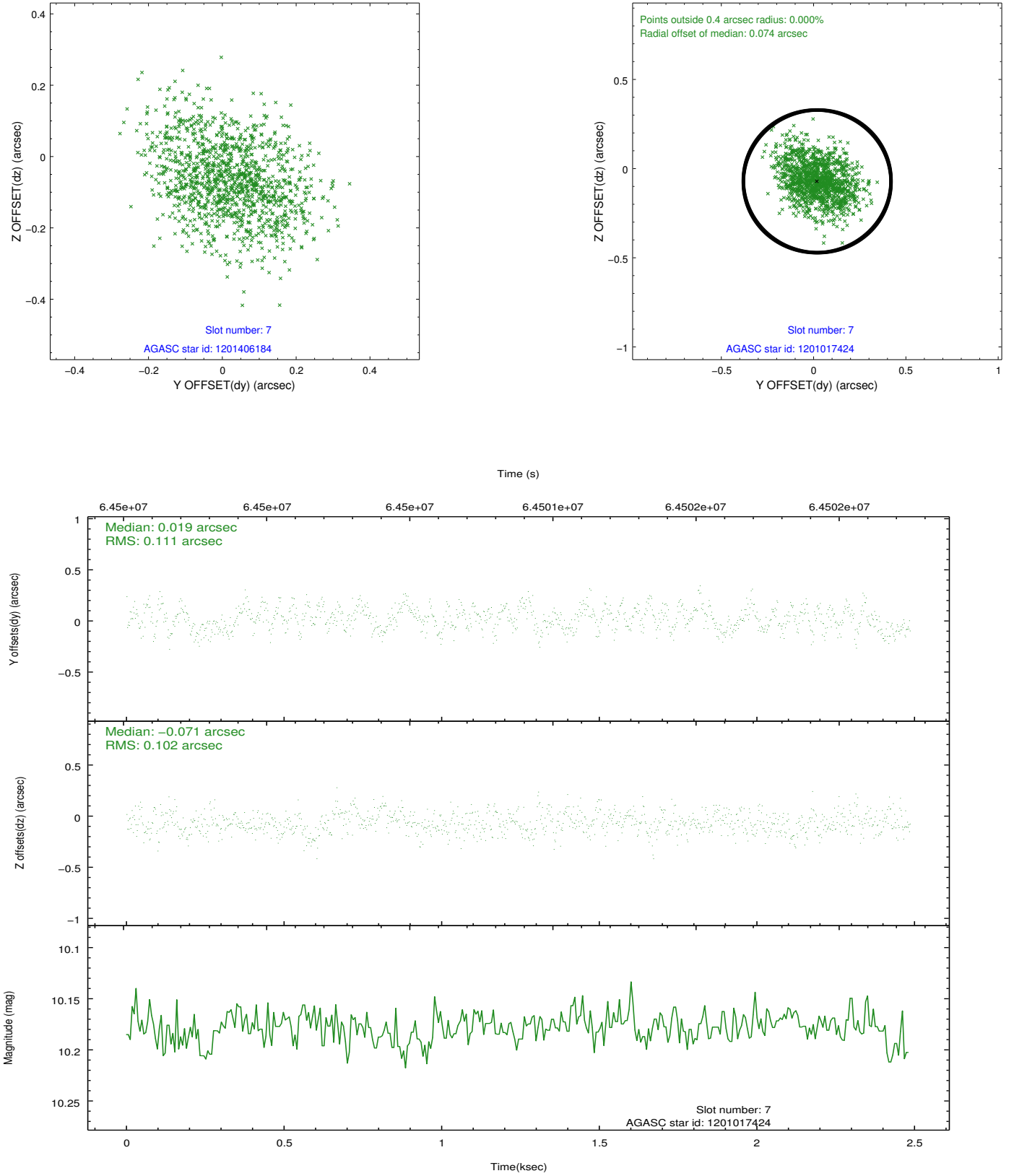
2.4.3 Slot 5



2.4.4 Slot 6

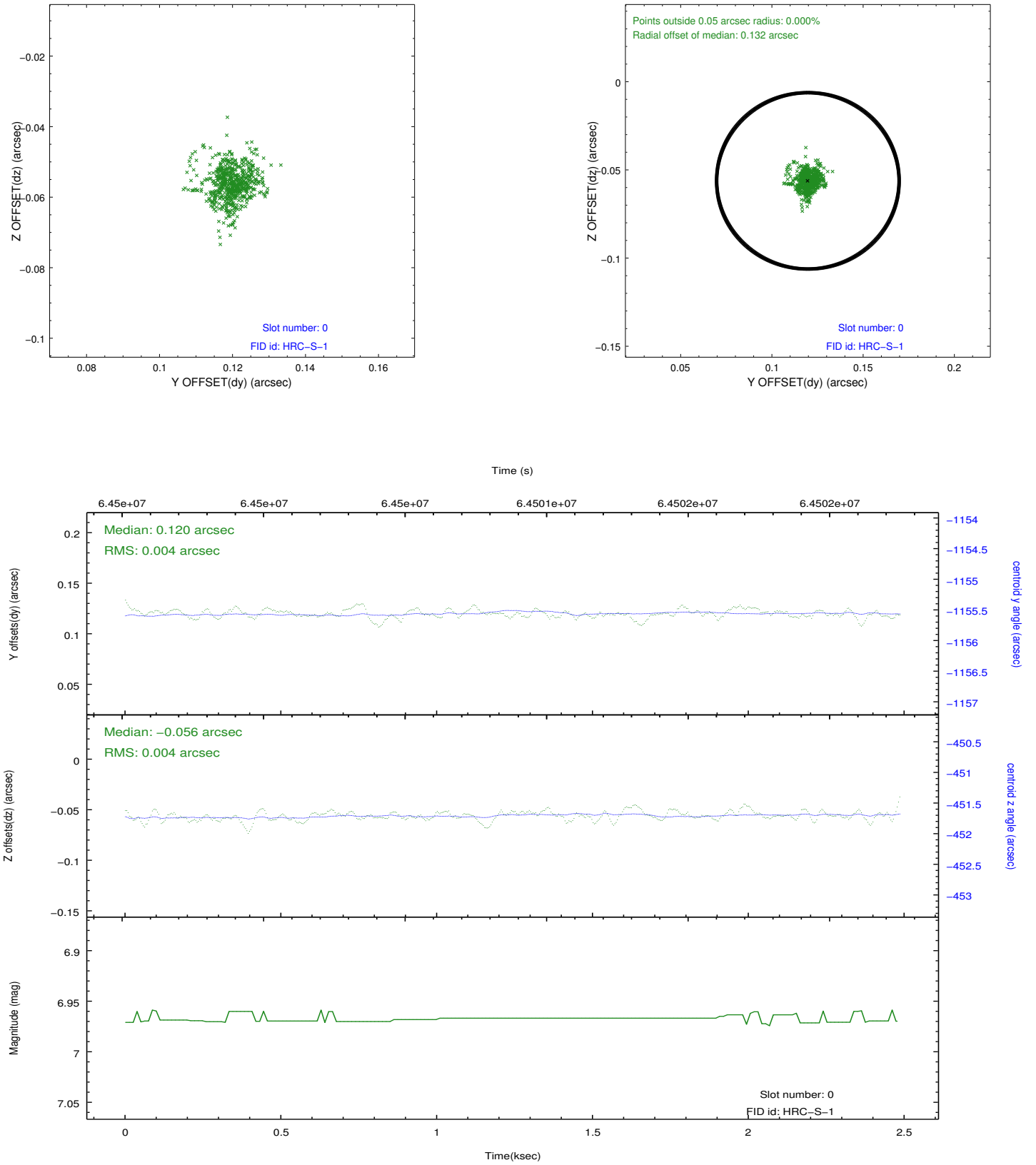


2.4.5 Slot 7

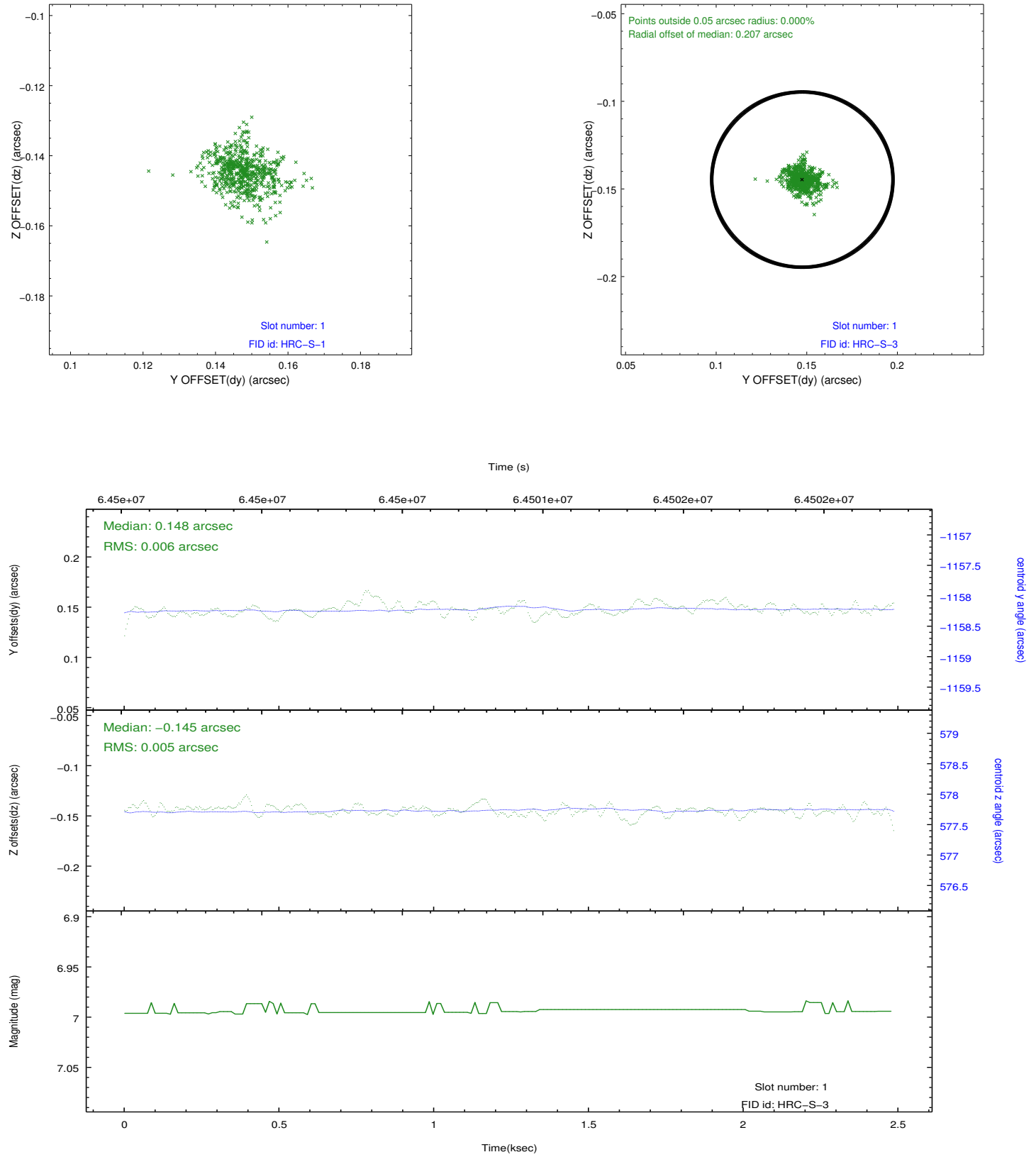


2.5 FID Slots

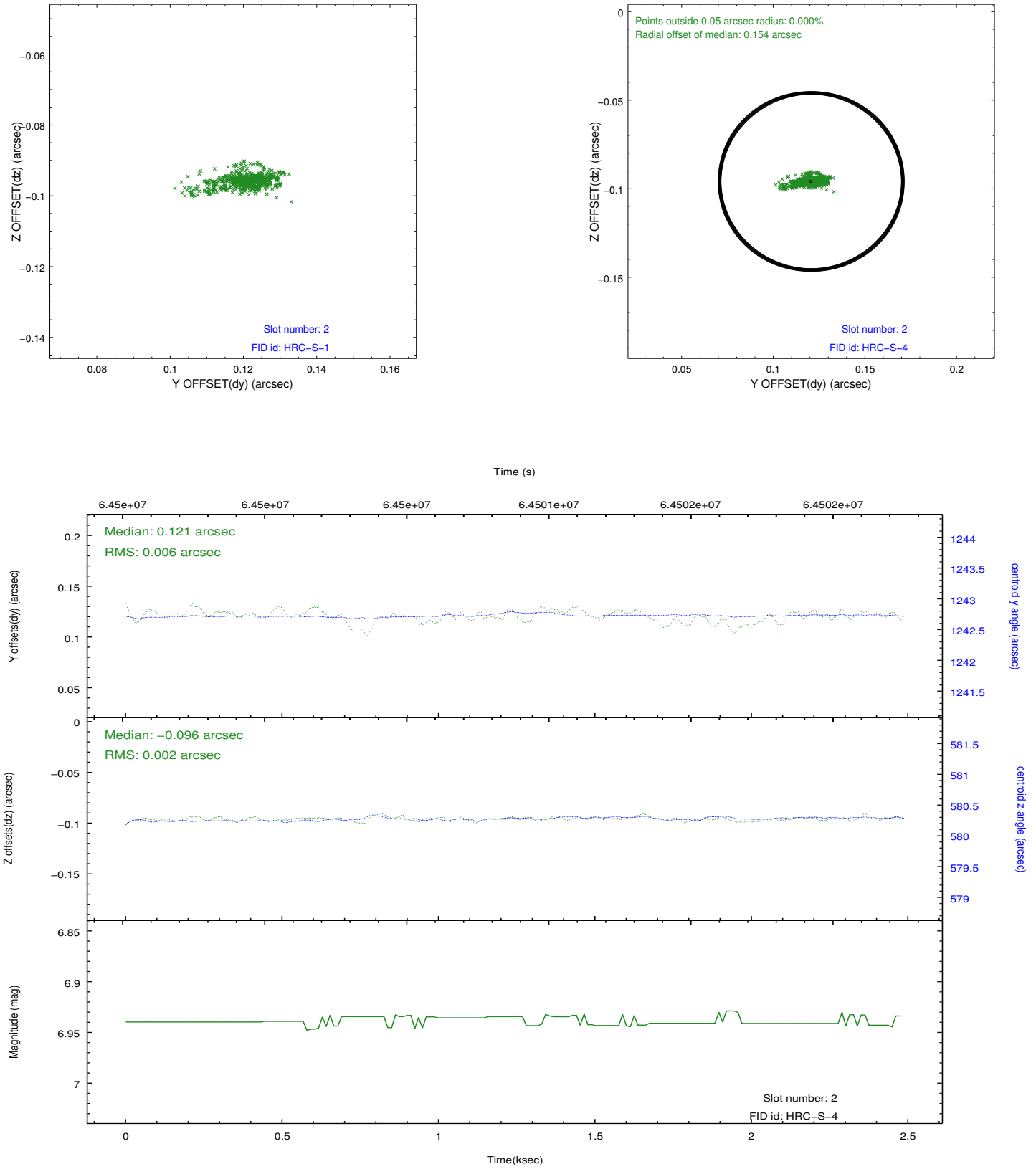
2.5.1 Slot 0



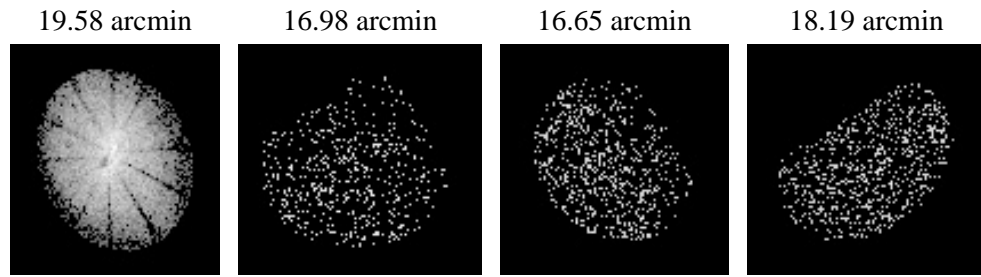
2.5.2 Slot 1



2.5.3 Slot 2



3 Point Sources



A Summary

A.1 Status

V&V Scientist	Joy Nichols
V&V Date (YYYY-MM-DD)	2009.12.03
V&V Edition	1
V&V Disposition and Status	OK
V&V Charge Time	1.88

A.2 Comments

Charge time for this ObsId remains at original value of 1.88 ks,
although
with the current processing the charge time would have been 2.203 ksec.
Target is very off-axis.