

V&V Reference Report

L2 ASCDS Version : 8.1.2

Observation 1155 - L2 Version 6

Chandra X-Ray Center

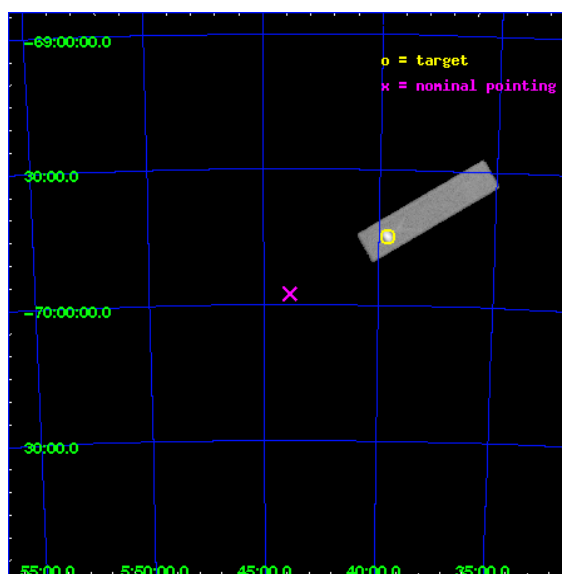
L2 Processing Date : Dec 2 2009

Contents

1	Front	2
2	OBI	3
2.1	OBI	3
2.1.1	Images	3
2.1.2	Parameters	4
2.1.3	Events	4
2.2	Compared Parameters	5
2.3	Aspect	6
2.4	Star Slots	9
2.4.1	Slot 3	9
2.4.2	Slot 4	10
2.4.3	Slot 5	11
2.4.4	Slot 6	12
2.4.5	Slot 7	13
2.5	FID Slots	14
2.5.1	Slot 0	14
2.5.2	Slot 1	15
2.5.3	Slot 2	16
3	Point Sources	17
A	Summary	18
A.1	Status	18
A.2	Comments	18

1 Front

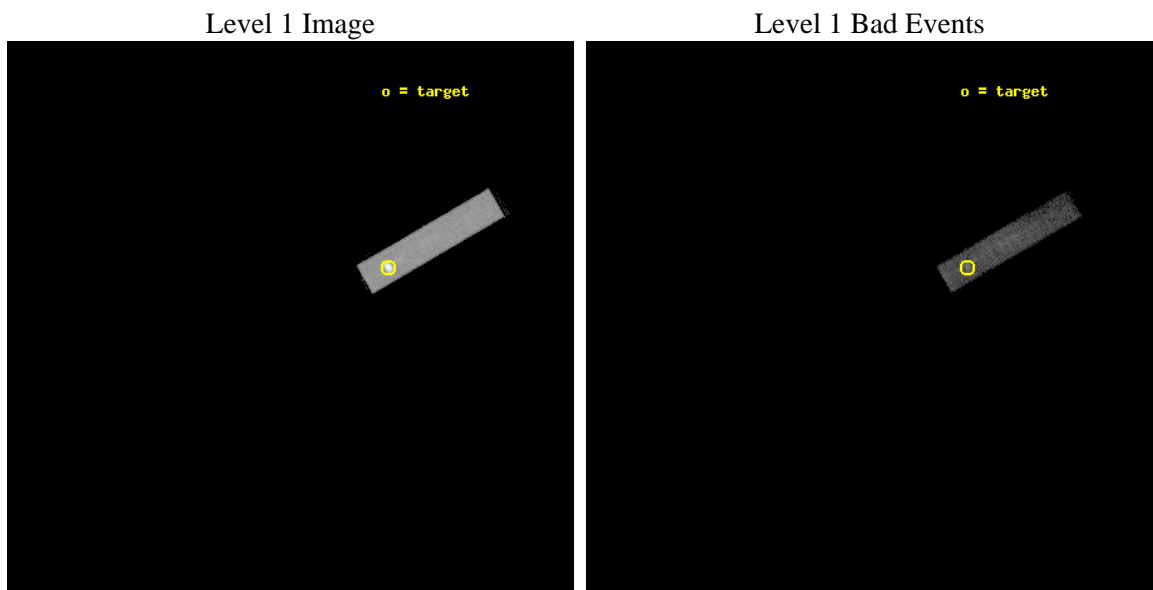
seq_num	480105	Sequence number
obs_id	1155	Observation id
title	 	Proposal title
observer	Dr. CXC Calibration	Principal investigator
object	LMC X-1	Source name
ra_targ	84.914583	Observer's specified target RA
dec_targ	-69.743611	Observer's specified target Dec
ra_nom	85.967434969926	Nominal RA
dec_nom	-69.959936449551	Nominal Dec
roll_nom	329.81835339398	Nominal Roll
revision	6	Processing version of data
ontime	2201.9563299939	[s]
livetime	2188.5170917035	Ontime multiplied by DTCOR
l2events	96790	Number of level 2 events



2 OBI

2.1 OBI

2.1.1 Images



2.1.2 Parameters

obi_num	1	Obi number	sched_exp_time	2000.000000	Scheduled observation exposure time
ascdsver	8.1.2	Processing system revision	ontime	2201.9563299939	[s]
caldbver	4.1.4	 	l1events	131606	Number of level 1 events
date	2009-12-02T17:22:54	Date and time of file creation			
revision	5	Processing version of data			

2.1.3 Events

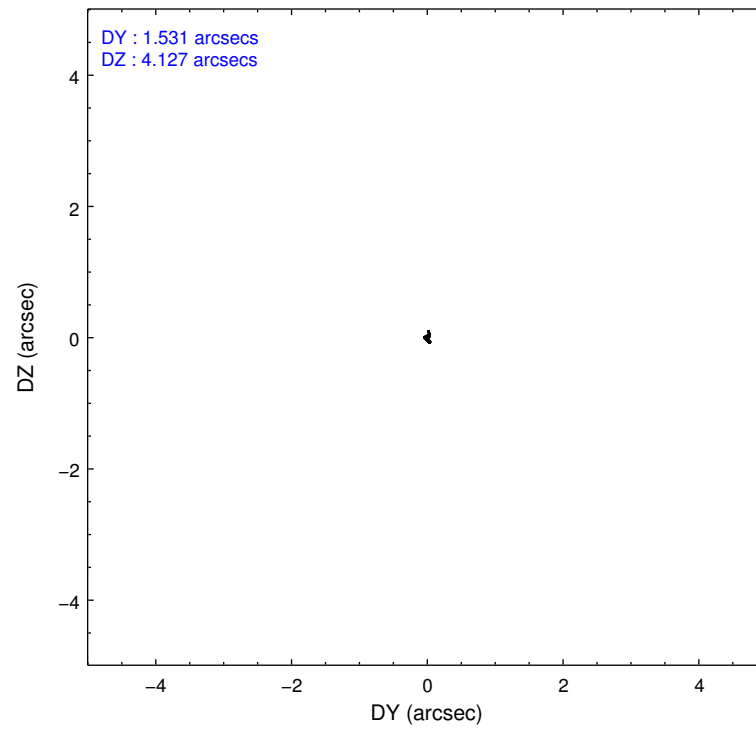
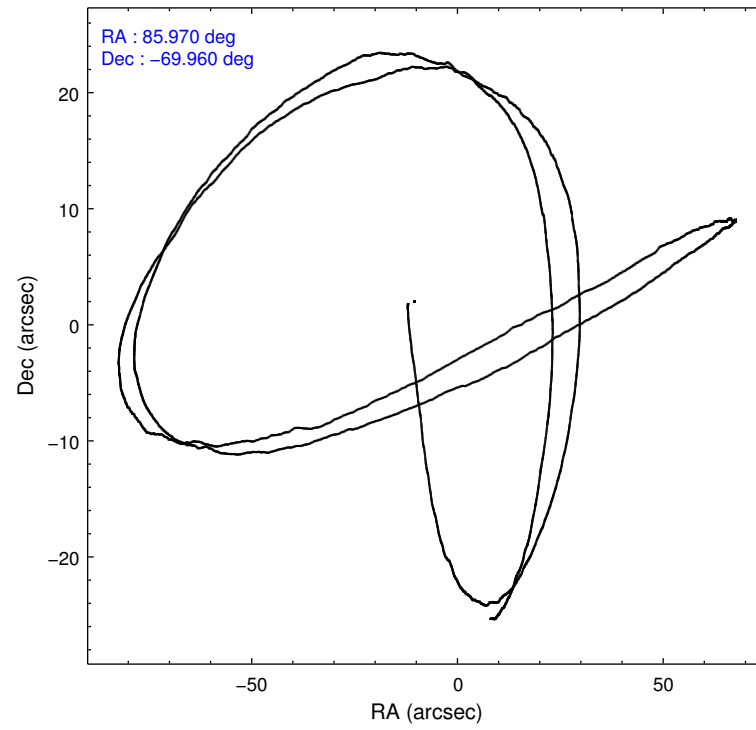
Level 1 Events

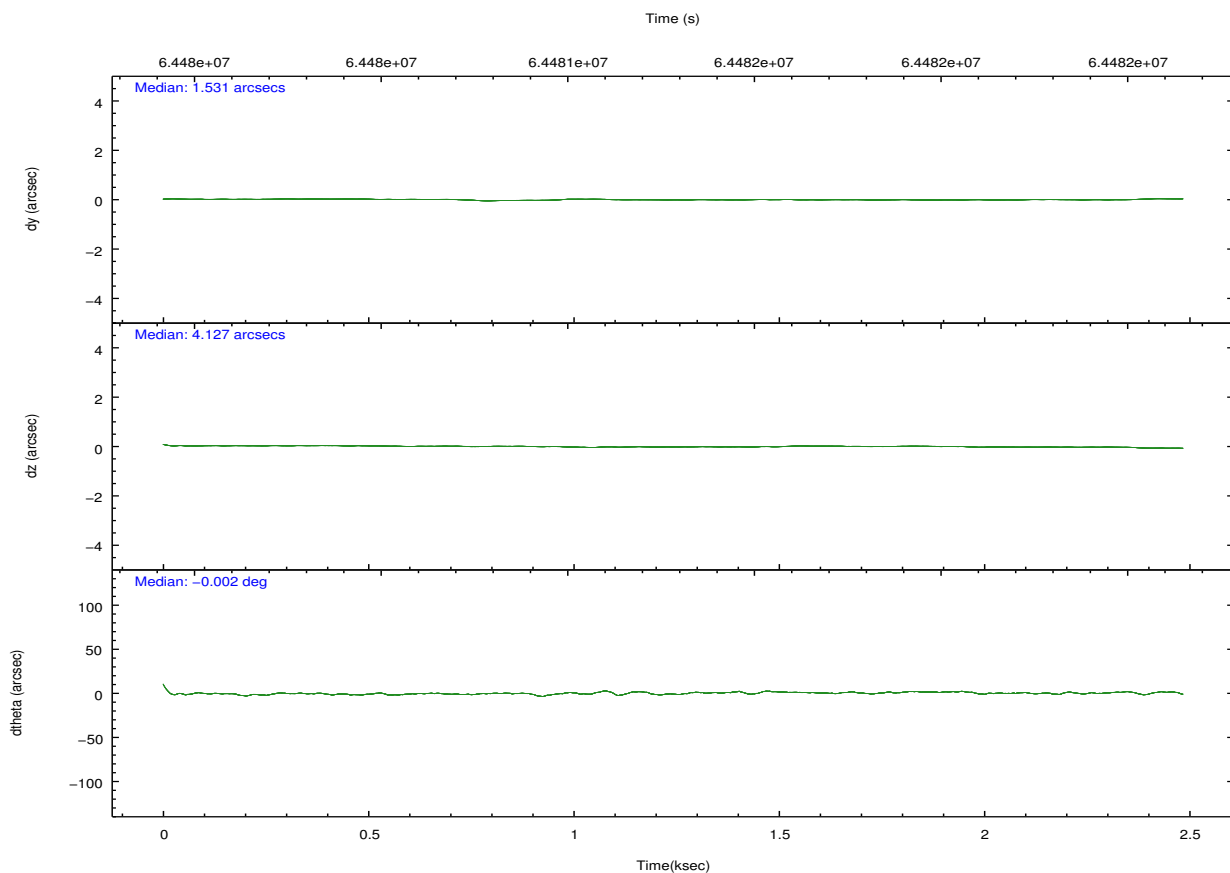
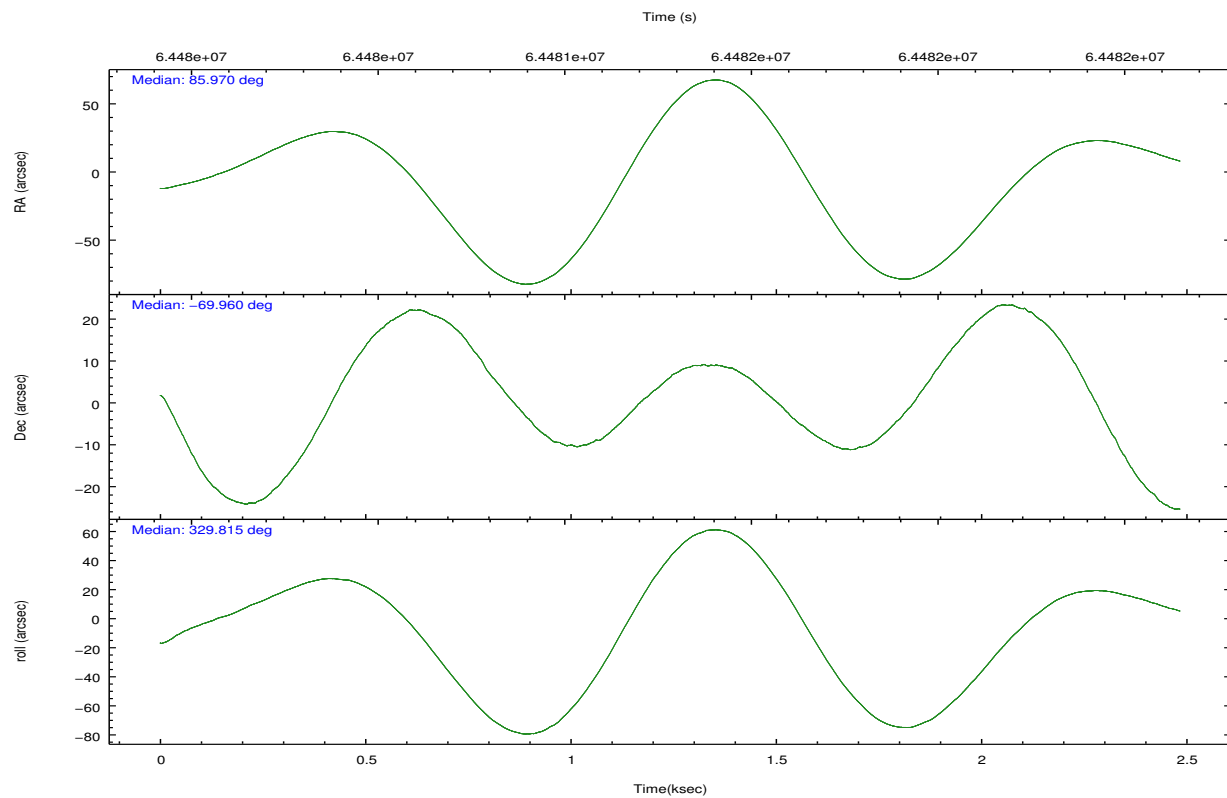
	segment 1	segment 2	segment 3
level 1 events	131562	44	0
rejected events	26707	4	0
rejected %	20%	9%	0%

2.2 Compared Parameters

Parameter	Planned	Actual	Parameter	Planned	Actual
Instrument	HRC	HRC	Obspar format version number	6	6
Detector	HRC-S	HRC-S	Obspar file type	PREDICTED	ACTUAL
Grating	NONE	NONE	Obspar update status	NONE	UPDATED
Data mode	OBSERVING	OBSERVING			
Observation mode	POINTING	POINTING			
Pointing RA	85.882326	85.96743496992558			
Pointing Dec	-69.960437	-69.95993644955108			
Pointing Roll	329.671067	329.8183533939849			
SIM focus pos (mm)	-1.528523	-1.428180813131781			
SIM defocus (mm)	0.004813771043328752	0.1051558262725154			
SIM translation stage pos (mm)	250.455976	250.466033080201			
SIM translation stage offset (mm)	0	-0.01005468664627074			
Observation start time	64480524.184000	64479858.523989			
Observation start date	2000-01-17T07:14:20	2000-01-17T07:04:18			
Observation end time	64482524.184000	64482657.79909			
Observation end date	2000-01-17T07:47:40	2000-01-17T07:50:57			

2.3 Aspect



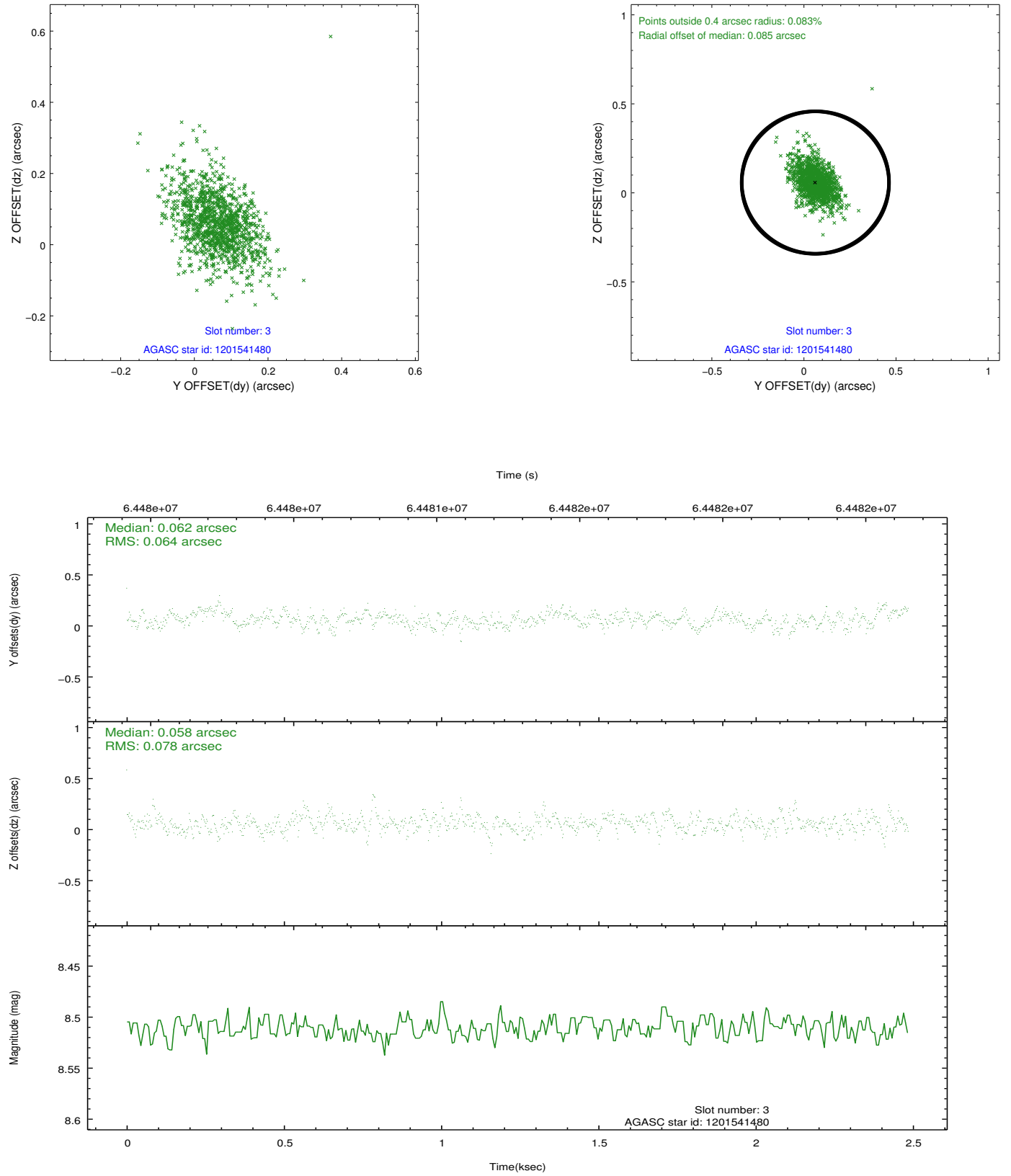


Slot Statistics

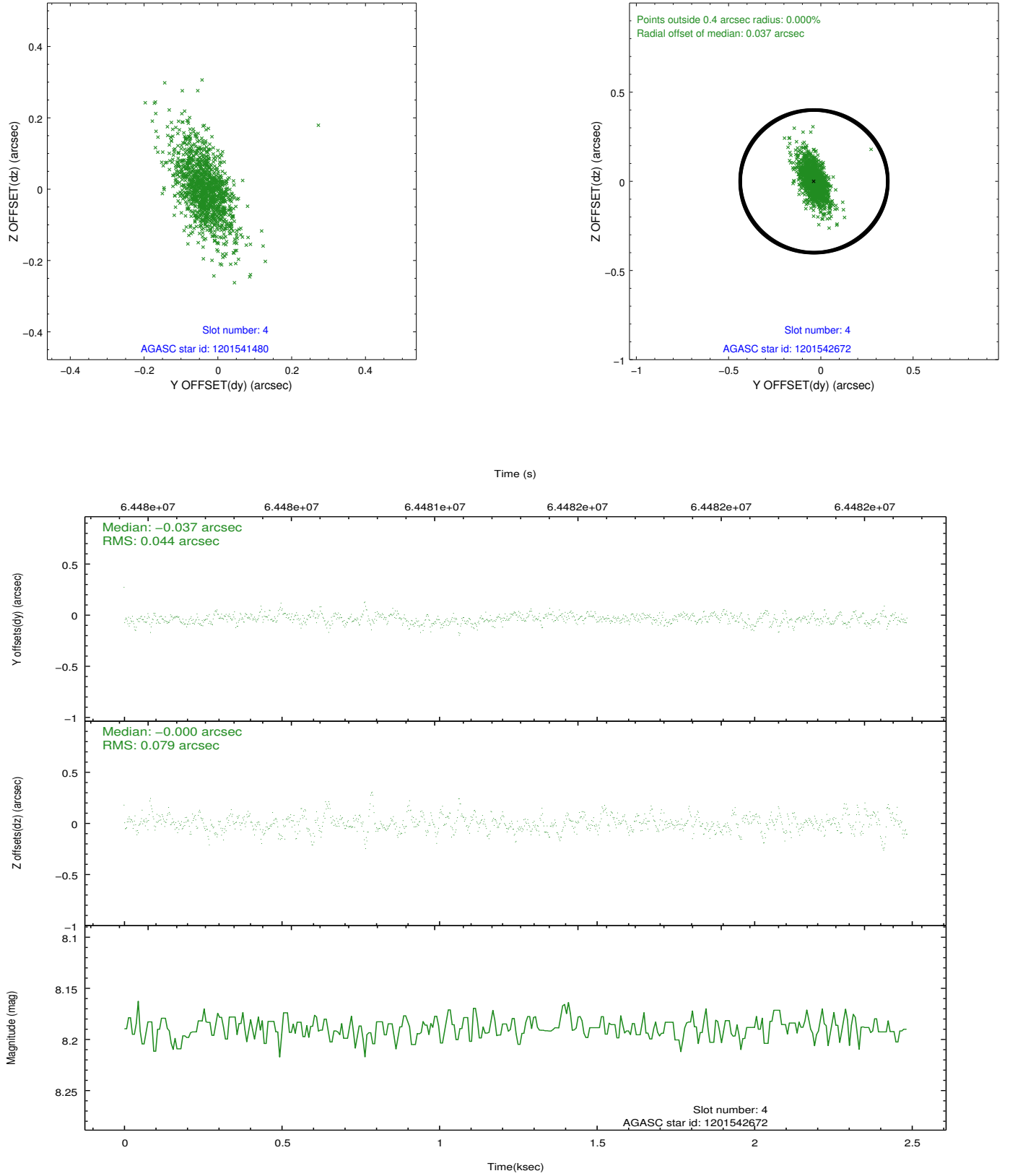
slot	status	id	mag	n_pts	med_dy	med_dz	dr1	dr2	ra	dec	mean_y	mean_z
0	FID	HRC-S-1	6.97	606	0.128	-0.097	0.007	0.011	0.000000	0.000000	-1155.56	-452.53
1	FID	HRC-S-3	7.00	606	0.156	-0.100	0.008	0.013	0.000000	0.000000	-1160.14	576.25
2	FID	HRC-S-4	6.94	606	0.104	-0.099	0.005	0.009	0.000000	0.000000	1240.78	580.45
3	GUIDE	1201541480	8.51	1212	0.062	0.058	0.100	0.176	87.080483	-70.345903	1958.76	-477.21
4	GUIDE	1201542672	8.19	1213	-0.037	-0.000	0.087	0.171	84.492488	-69.957531	-1475.14	-874.16
5	GUIDE	1201540760	8.55	1212	-0.071	0.095	0.116	0.197	84.403691	-70.419249	-697.18	-2345.75
6	GUIDE	1201542160	9.26	1207	0.027	0.004	0.098	0.173	87.947792	-69.800616	1944.97	1753.76
7	GUIDE	1201017424	10.18	1212	0.013	-0.155	0.169	0.267	85.854985	-69.248506	-1324.39	2195.78

2.4 Star Slots

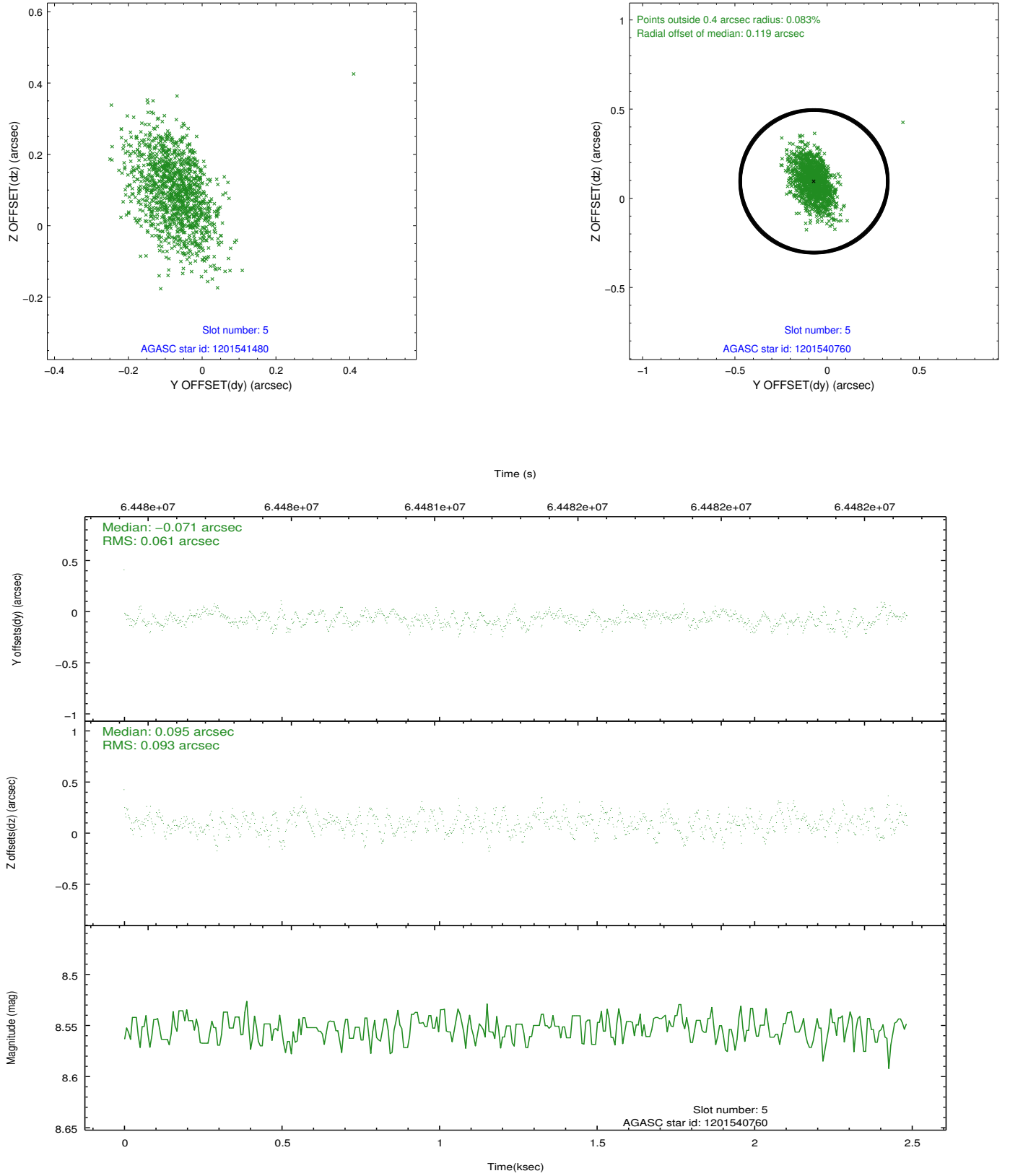
2.4.1 Slot 3



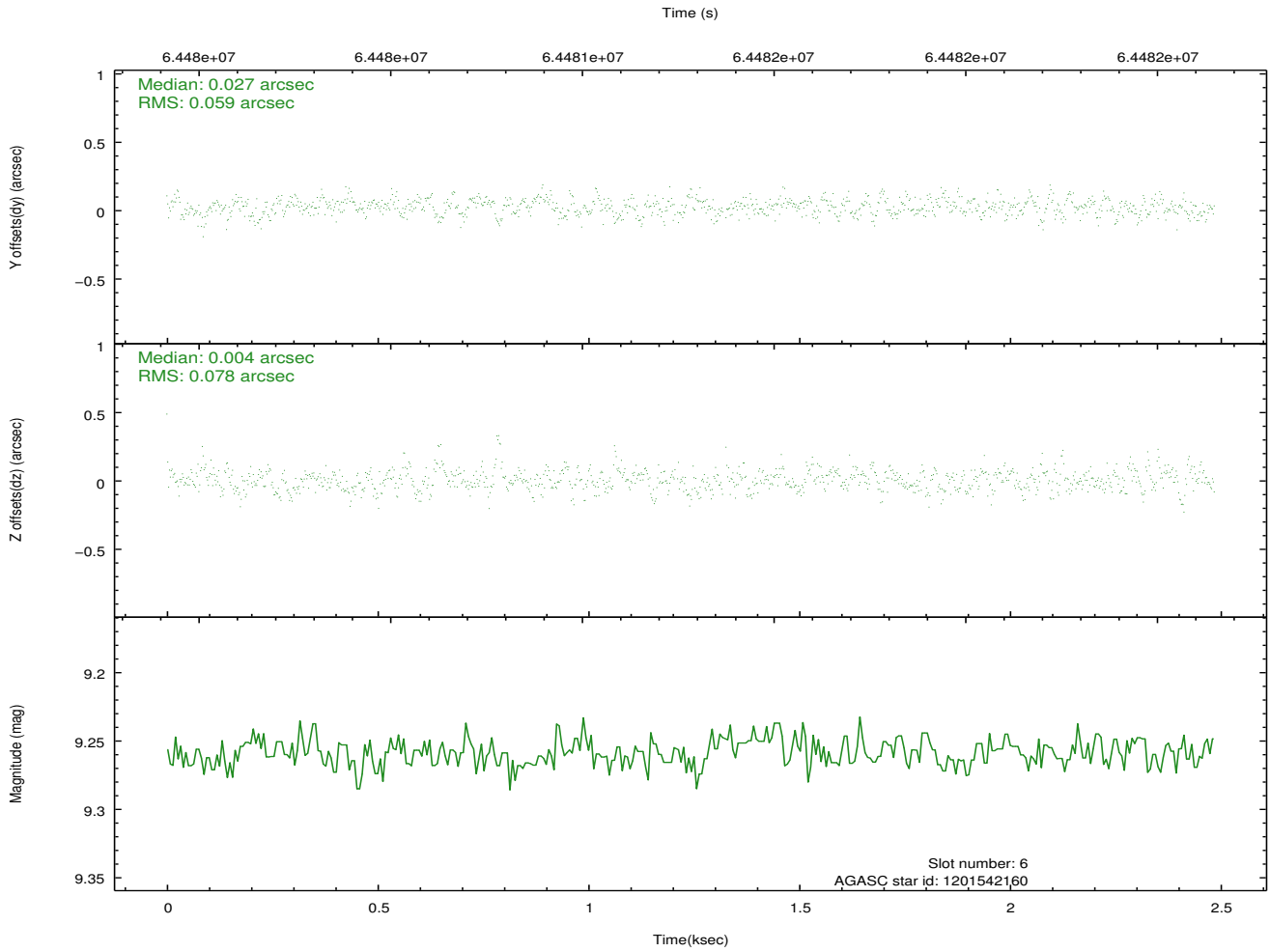
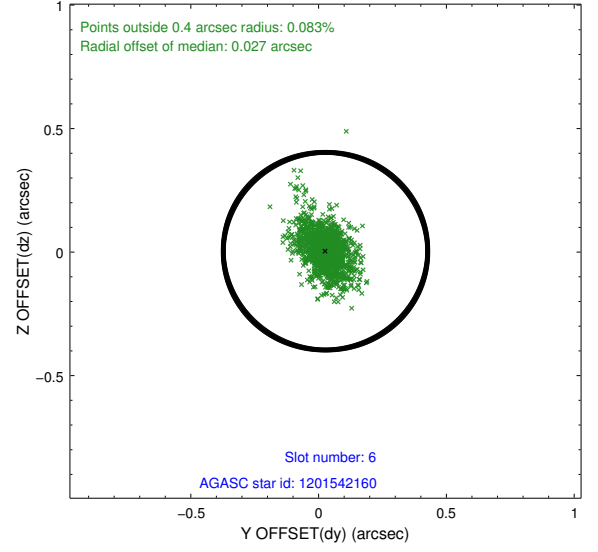
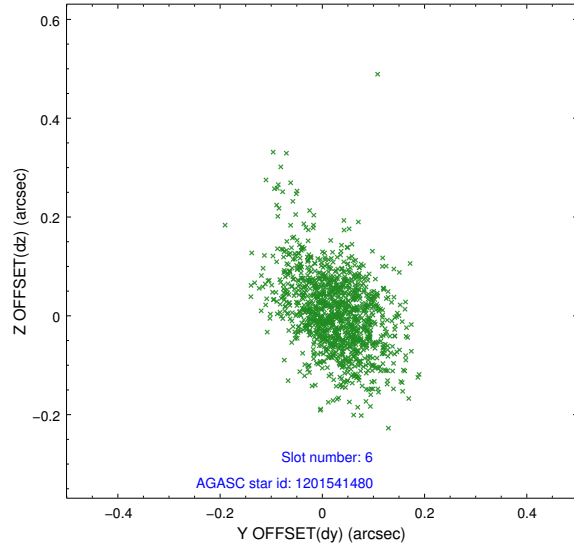
2.4.2 Slot 4



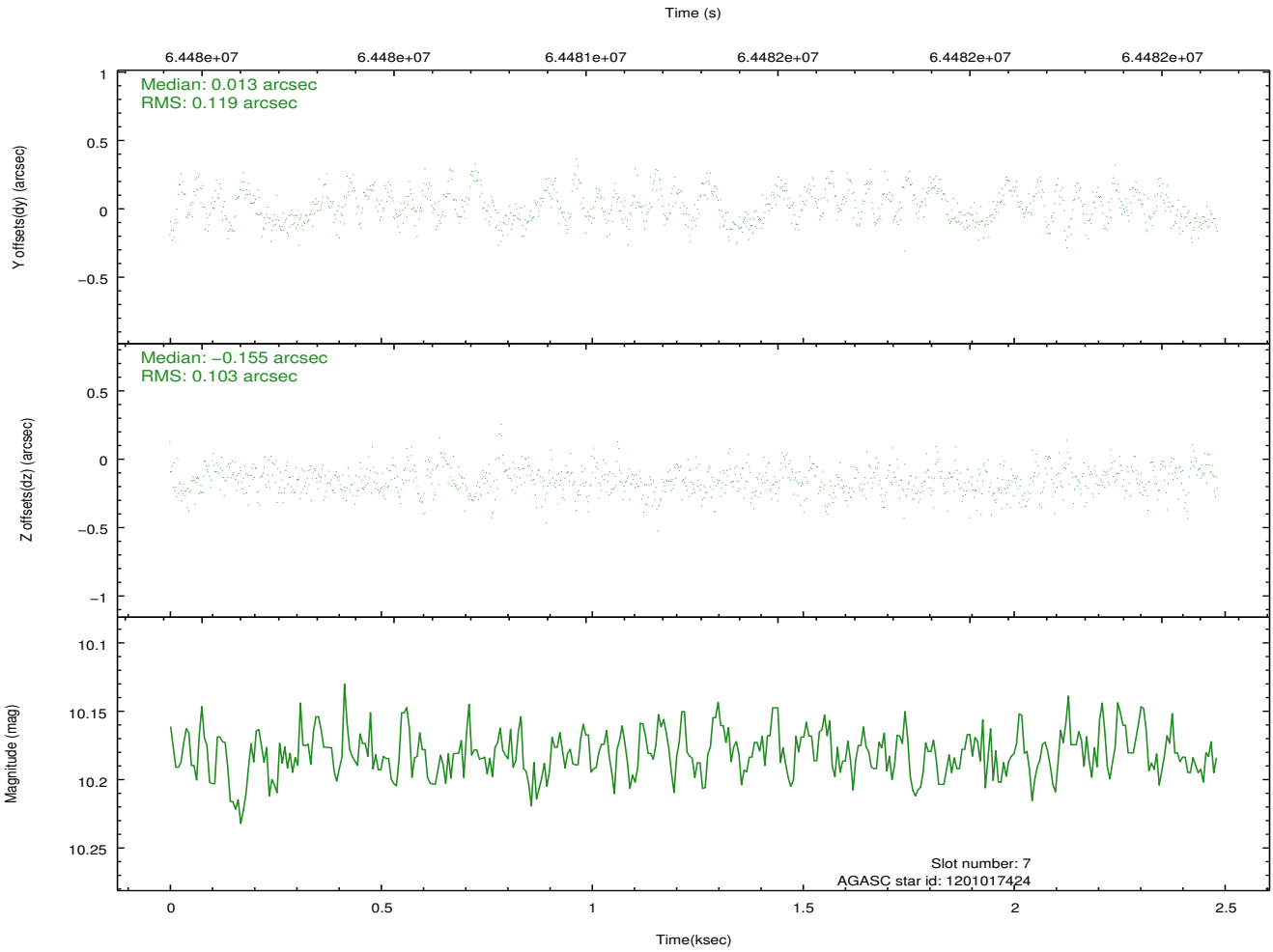
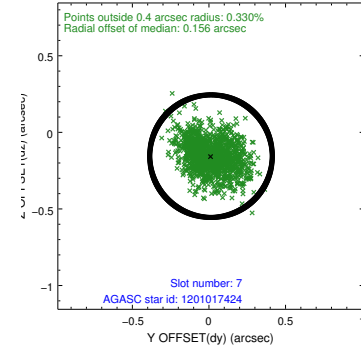
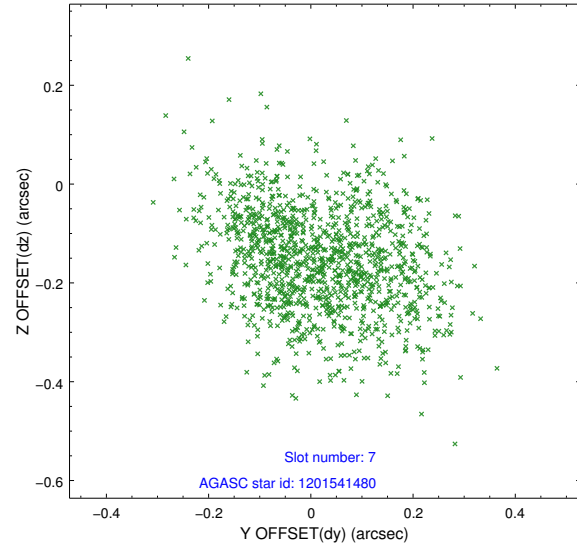
2.4.3 Slot 5



2.4.4 Slot 6

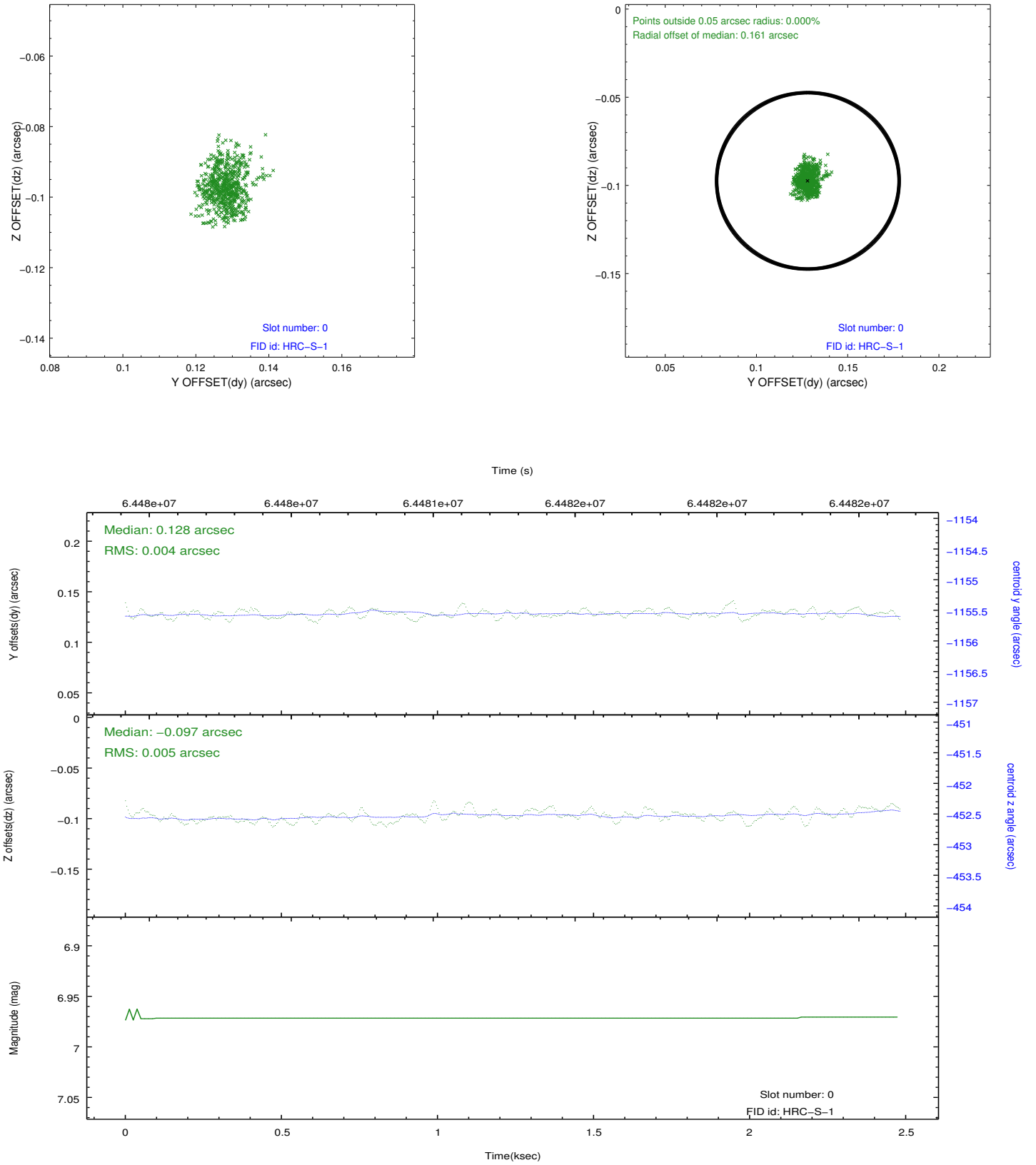


2.4.5 Slot 7

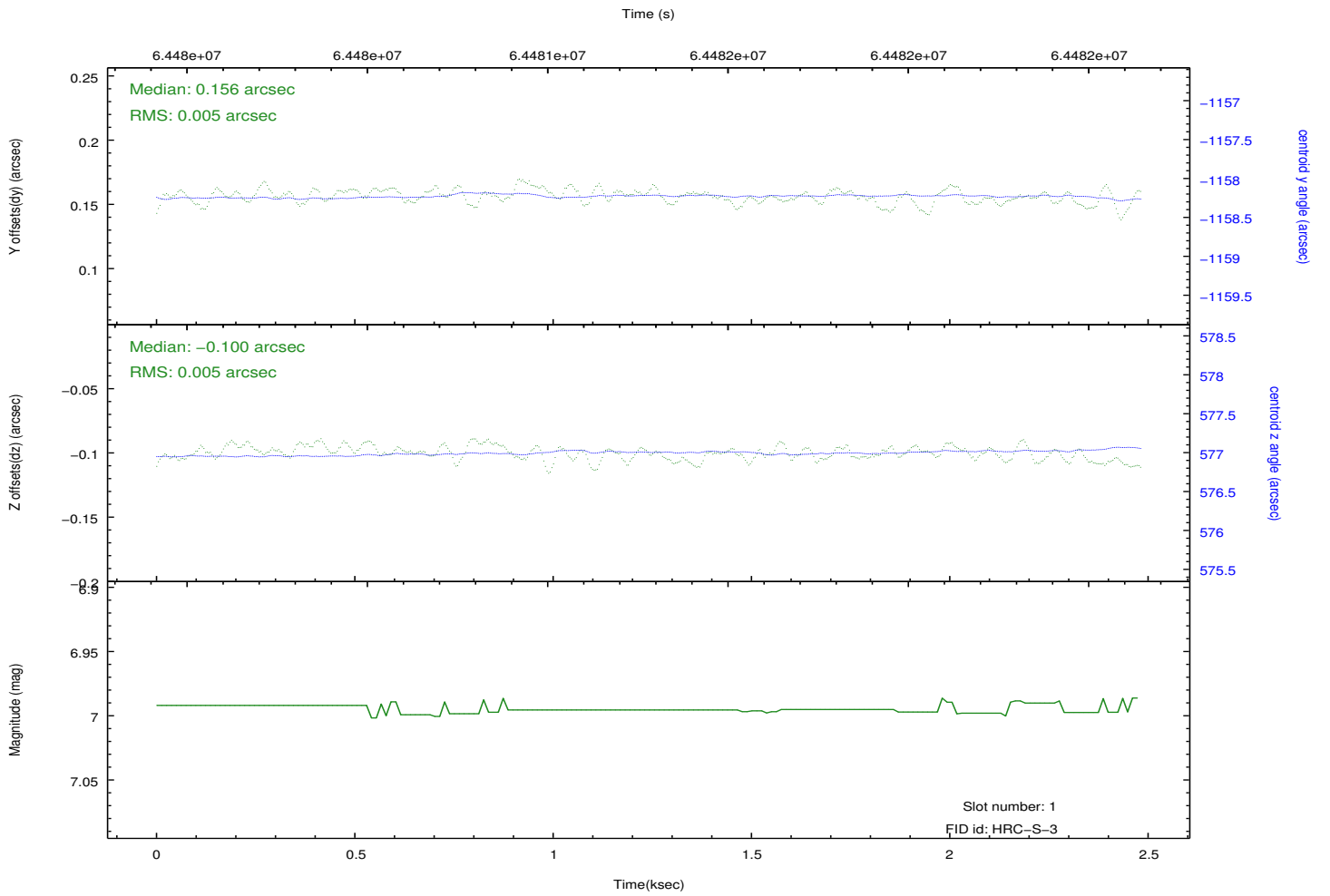
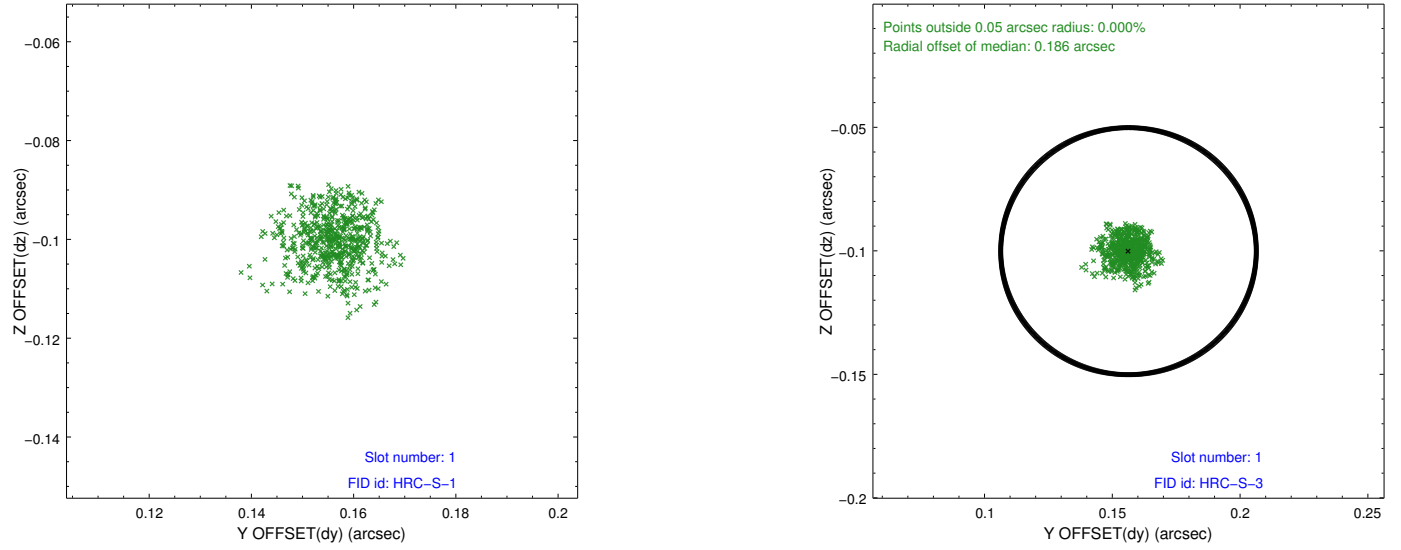


2.5 FID Slots

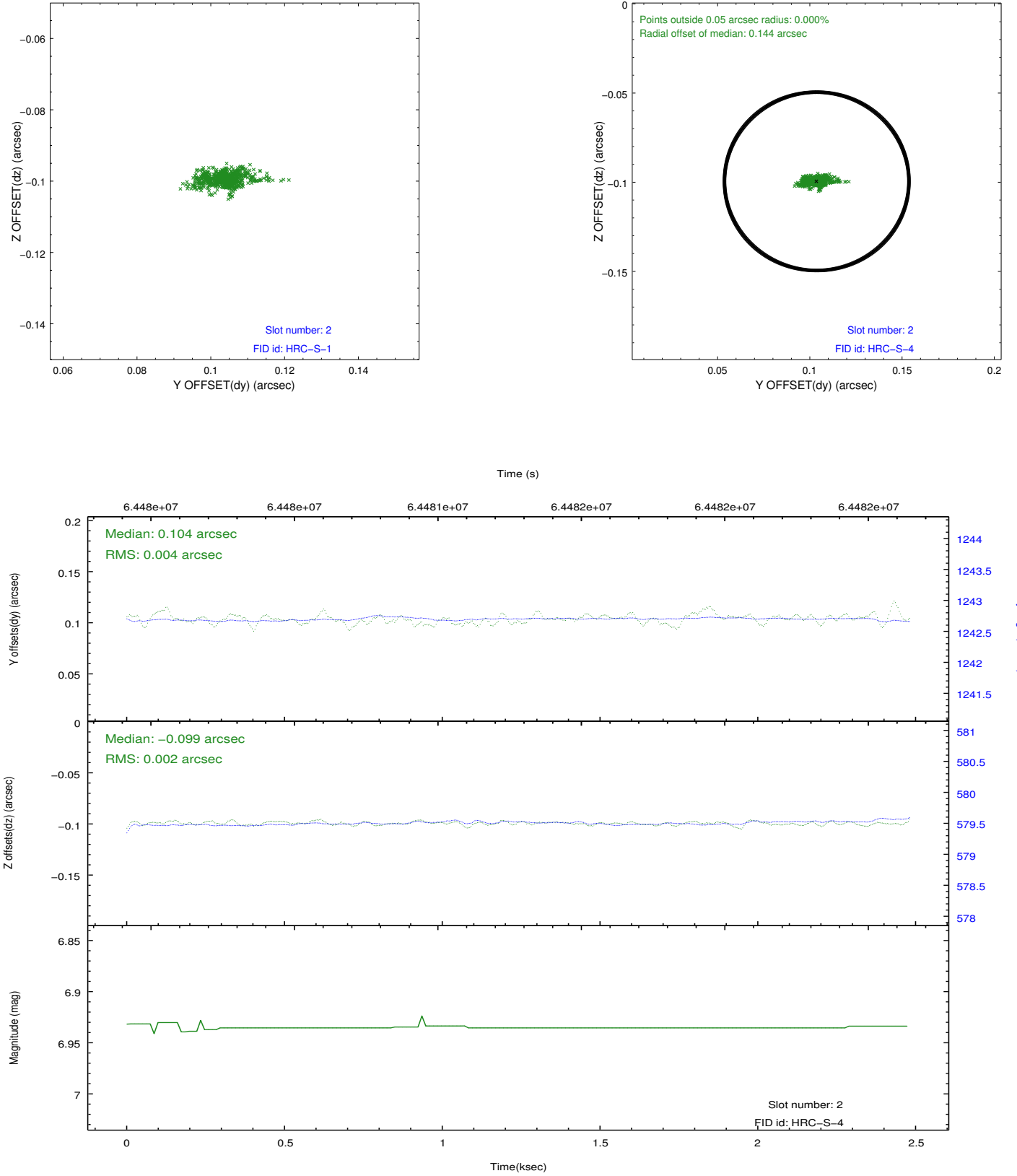
2.5.1 Slot 0



2.5.2 Slot 1



2.5.3 Slot 2



3 Point Sources

A Summary

A.1 Status

V&V Scientist	Joy Nichols
V&V Date (YYYY-MM-DD)	2009.12.03
V&V Edition	1
V&V Disposition and Status	OK
V&V Charge Time	2.201

A.2 Comments

Target off-axis.