

V&V Reference Report

L2 ASCDS Version : 8.1.1

Observation 62506 - L2 Version 5

Chandra X-Ray Center

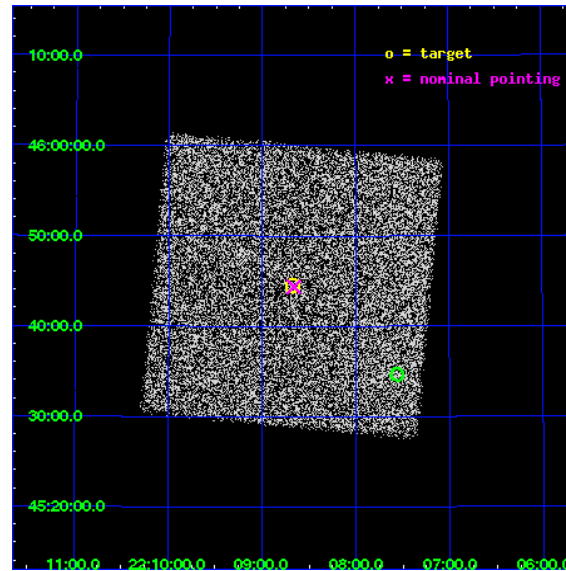
L2 Processing Date : Dec 9 2009

Contents

1	Front	2
2	OBI	3
2.1	OBI	3
2.1.1	Images	3
2.1.2	Parameters	4
2.1.3	Events	4
2.2	Compared Parameters	5
2.3	Aspect	6
2.4	Star Slots	9
2.4.1	Slot 3	9
2.4.2	Slot 4	10
2.4.3	Slot 5	11
2.4.4	Slot 6	12
2.4.5	Slot 7	13
2.5	FID Slots	14
2.5.1	Slot 1	14
2.5.2	Slot 2	15
3	Point Sources	16
A	Summary	17
A.1	Status	17
A.2	Comments	17

1 Front

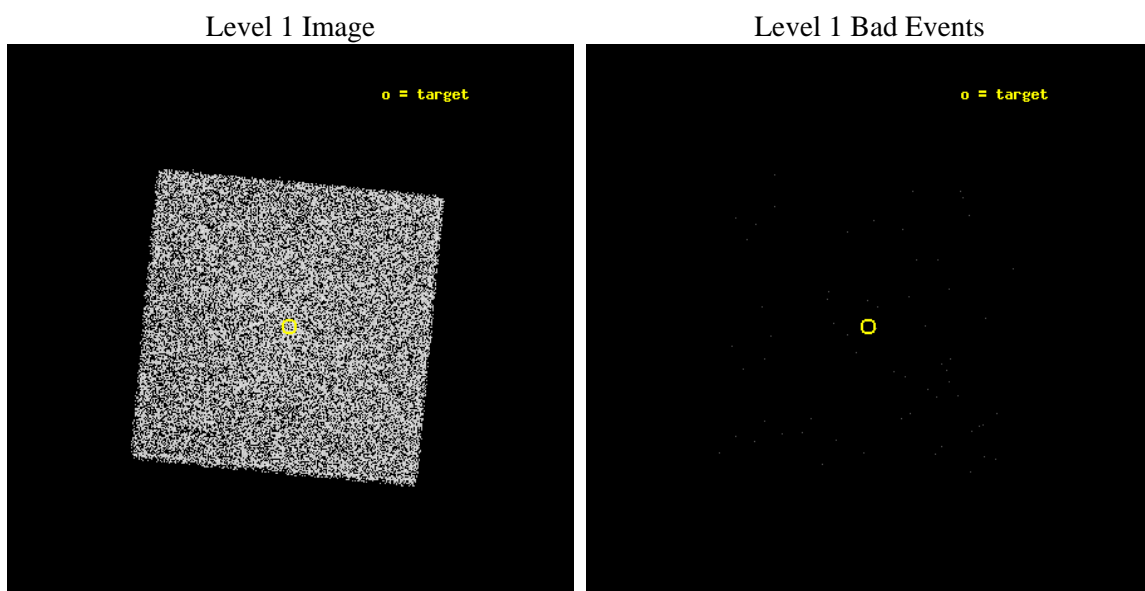
seq_num	270335	Sequence number
obs_id	62506	Observation id
title	 	Proposal title
observer	Dr. CXC Calibration	Principal investigator
object	ArLac	Source name
ra_targ	332.1701	Observer's specified target RA
dec_targ	45.7423	Observer's specified target Dec
ra_nom	332.16512560636	Nominal RA
dec_nom	45.739731786771	Nominal Dec
roll_nom	230.44295344238	Nominal Roll
revision	5	Processing version of data
ontime	1180.8000425324	[s]
livetime	1173.0587779188	Ontime multiplied by DTCOR
l2events	30251	Number of level 2 events



2 OBI

2.1 OBI

2.1.1 Images



2.1.2 Parameters

obi_num	0	Obi number	sched_exp_time	10000.000000	Scheduled observation exposure time
ascdsver	8.1.2	Processing system revision	ontime	1180.8000425324	[s]
caldbver	4.1.4	 	ll events	53431	Number of level 1 events
date	2009-12-09T20:09:43	Date and time of file creation			
revision	4	Processing version of data			

2.1.3 Events

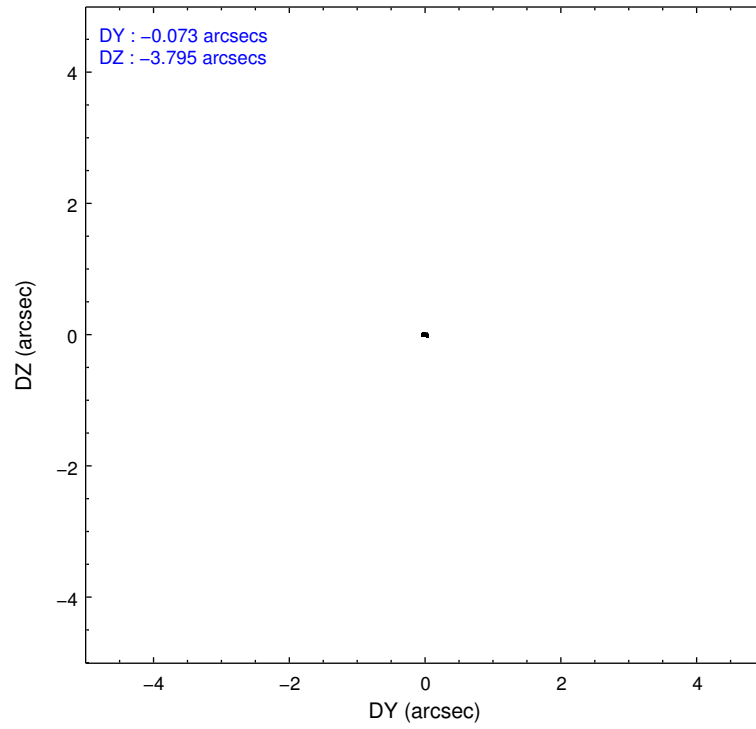
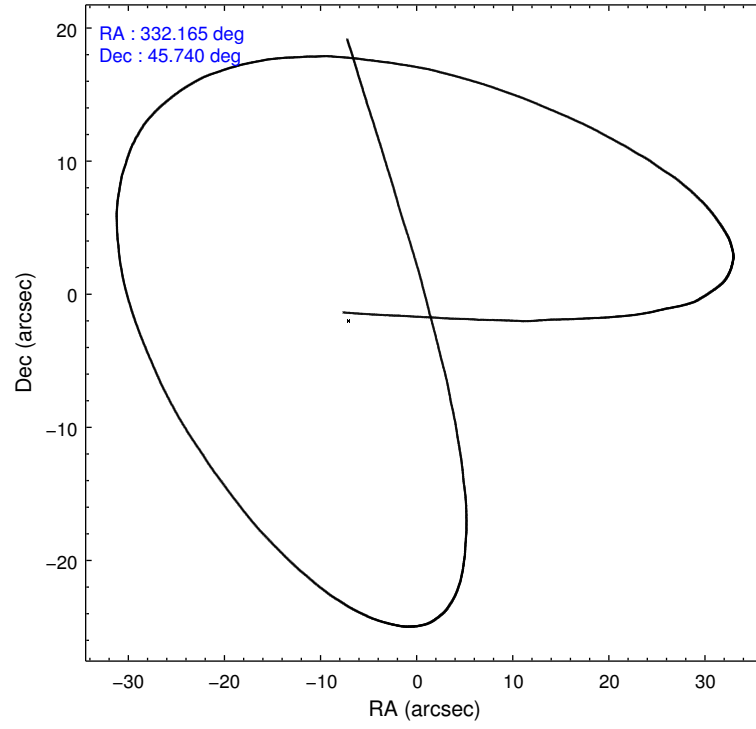
Level 1 Events

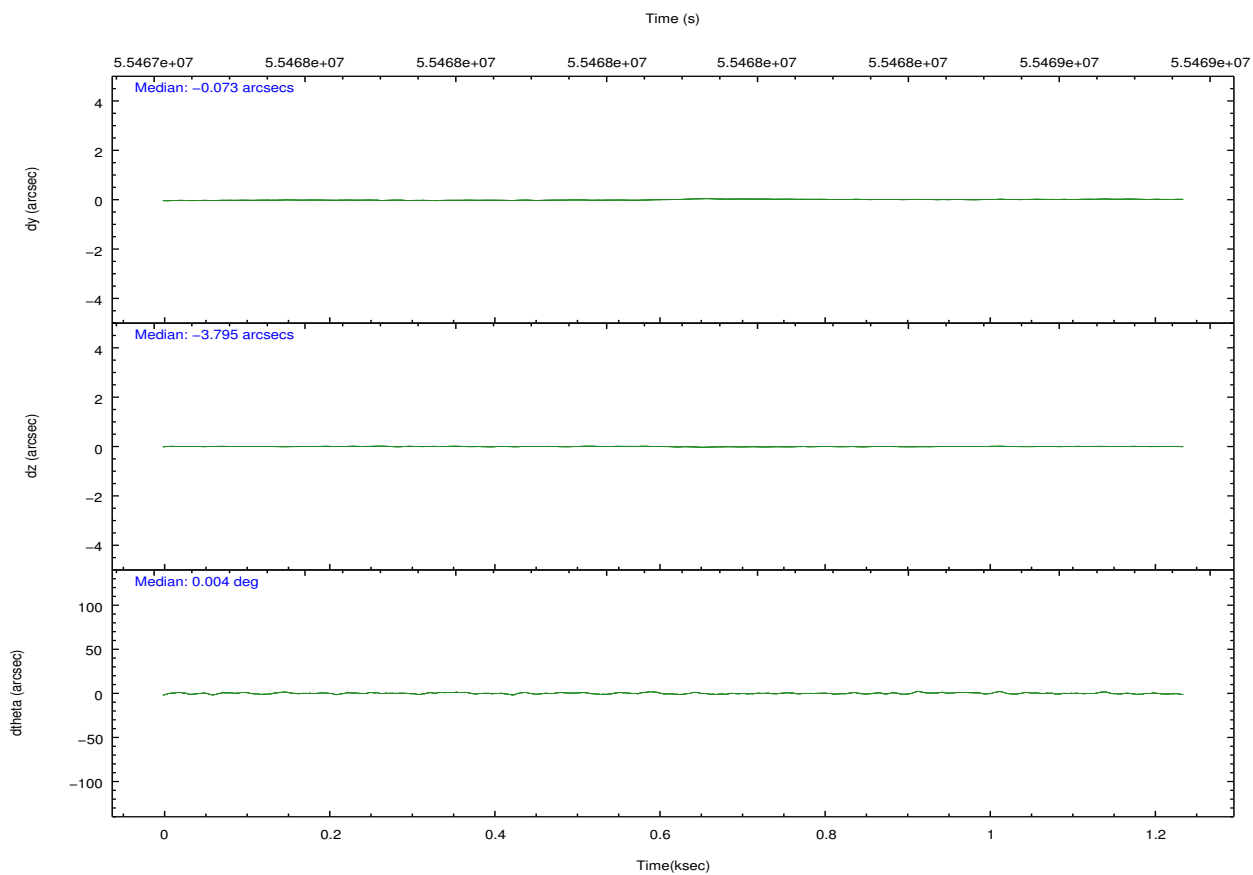
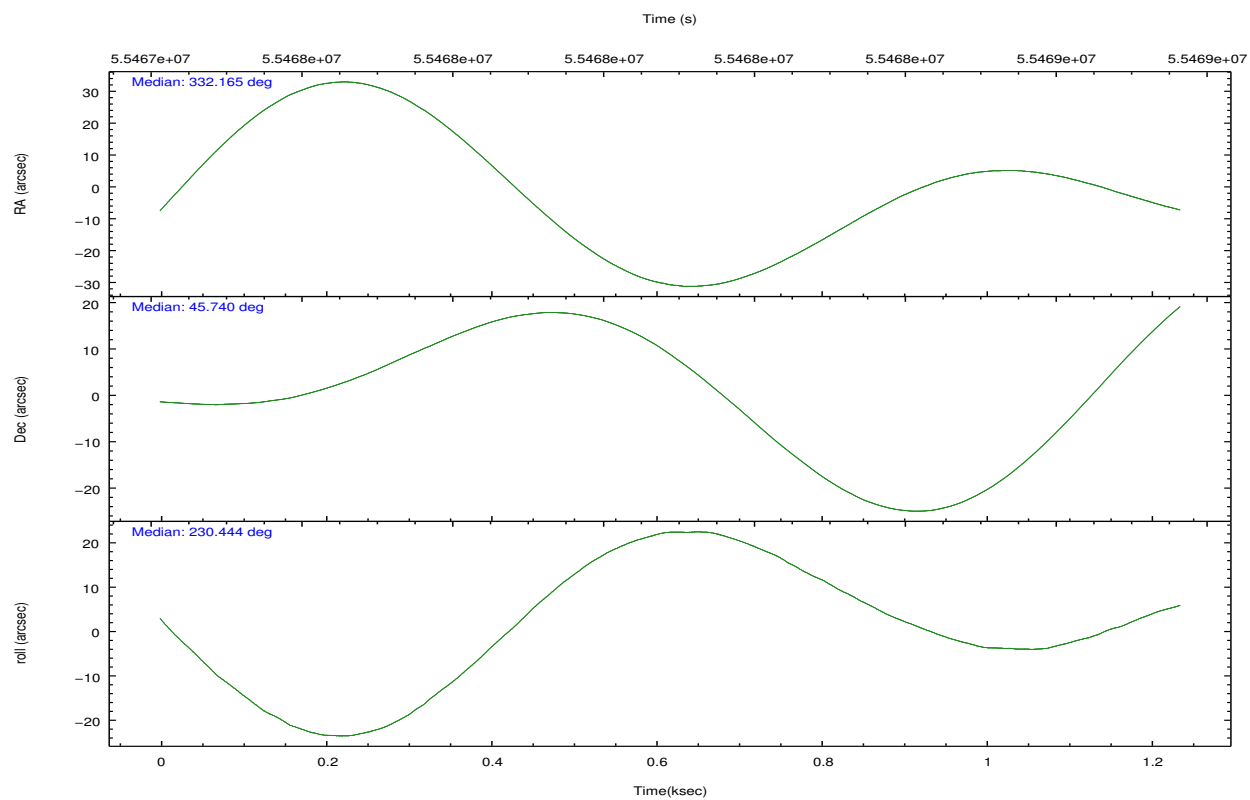
	segment 0
level 1 events	53431
rejected events	2443
rejected %	4%

2.2 Compared Parameters

Parameter	Planned	Actual	Parameter	Planned	Actual
Instrument	HRC	HRC	Obspar format version number	6	6
Detector	HRC-I	HRC-I	Obspar file type	PREDICTED	ACTUAL
Grating	NONE	NONE	Obspar update status	NONE	UPDATED
Data mode	OBSERVING	OBSERVING			
Observation mode	POINTING	POINTING			
Pointing RA	332.170381	332.165125606357			
Pointing Dec	45.767178	45.73973178677141			
Pointing Roll	230.534662	230.442953442377			
SIM focus pos (mm)	-1.040293	-1.041718744158295			
SIM defocus (mm)	0	-0.001426123499420617			
SIM translation stage pos (mm)	126.985494	126.9854943052878			
SIM translation stage offset (mm)	0	-5.413686238853188e-06			
Observation start time	55465264.184000	55467469.335662			
Observation start date	1999-10-04T23:00:00	1999-10-04T23:37:49			
Observation end time	55475264.184000	55468707.535707			
Observation end date	1999-10-05T01:46:40	1999-10-04T23:58:27			

2.3 Aspect



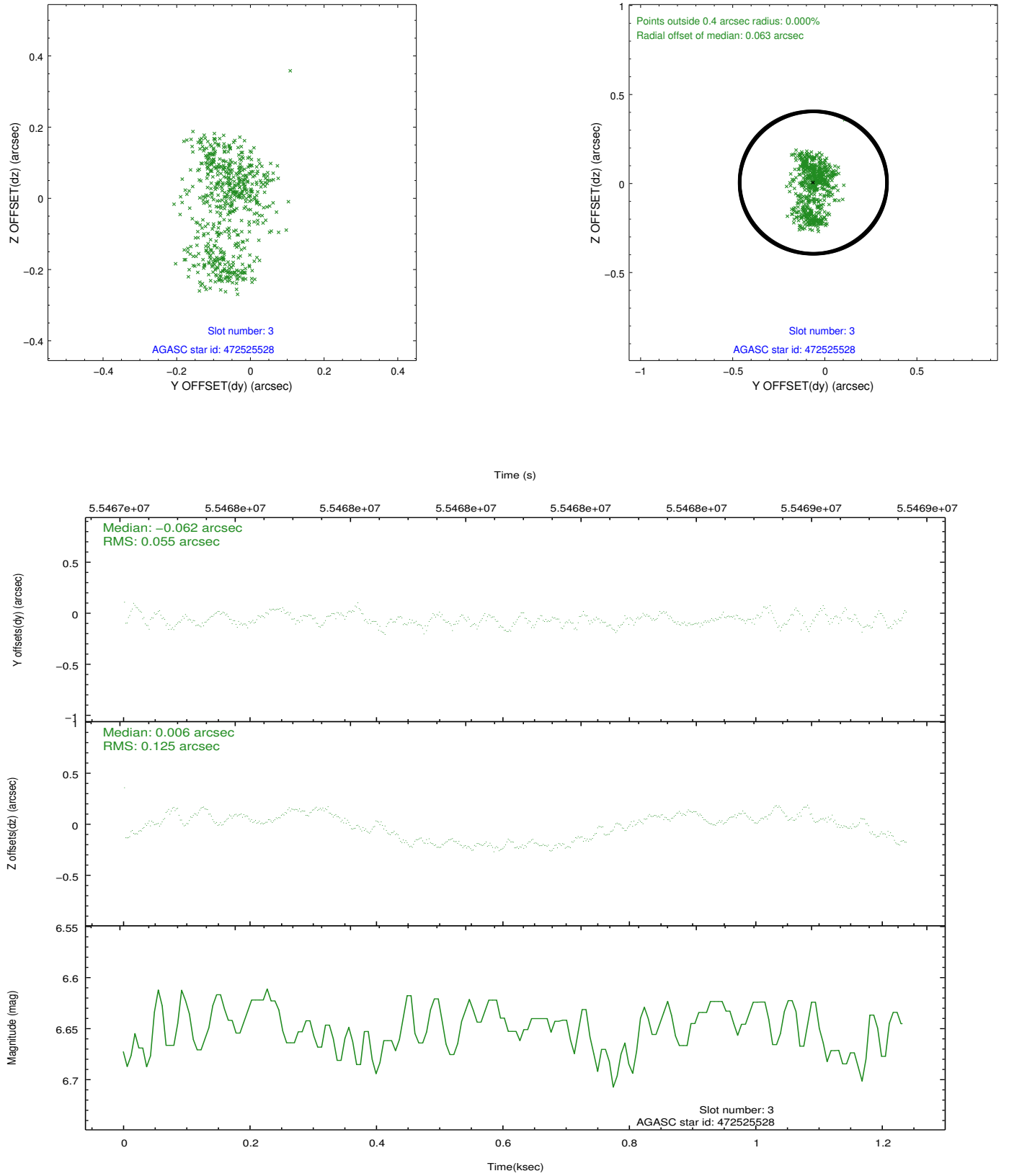


Slot Statistics

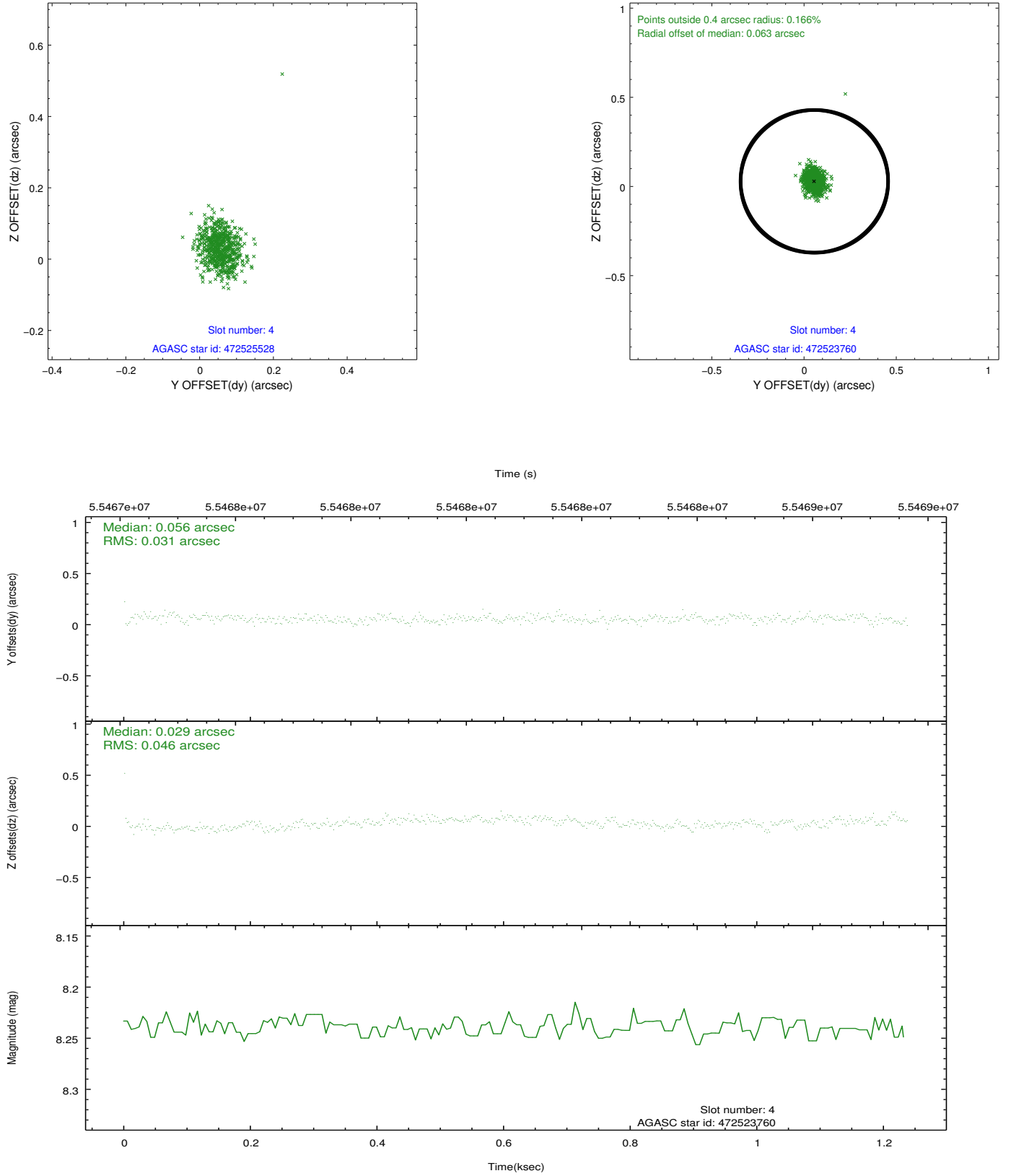
slot	status	id	mag	n_pts	med_dy	med_dz	dr1	dr2	ra	dec	mean_y	mean_z
0	OMITTED		0.00	0	0.000	0.000	0.000	0.000	0.000000	0.000000	0.00	0.00
1	FID	HRC-I-3	7.16	604	-0.156	-0.027	0.004	0.009	0.000000	0.000000	-1184.04	1020.65
2	FID	HRC-I-4	7.09	604	0.233	-0.030	0.004	0.009	0.000000	0.000000	1285.67	1020.13
3	GUIDE	472525528	6.65	604	-0.062	0.006	0.148	0.233	331.551102	45.248694	2434.59	-32.03
4	GUIDE	472523760	8.24	604	0.056	0.029	0.056	0.086	331.645363	45.403260	1856.32	-197.37
5	GUIDE	472665256	9.00	604	0.007	-0.038	0.068	0.108	332.808125	46.195041	-2200.38	240.70
6	GUIDE	472659832	9.46	601	-0.008	0.050	0.090	0.150	332.780399	46.098139	-1895.14	412.27
7	GUIDE	472655152	9.44	603	0.017	-0.019	0.093	0.150	332.504239	45.862991	-802.07	423.66

2.4 Star Slots

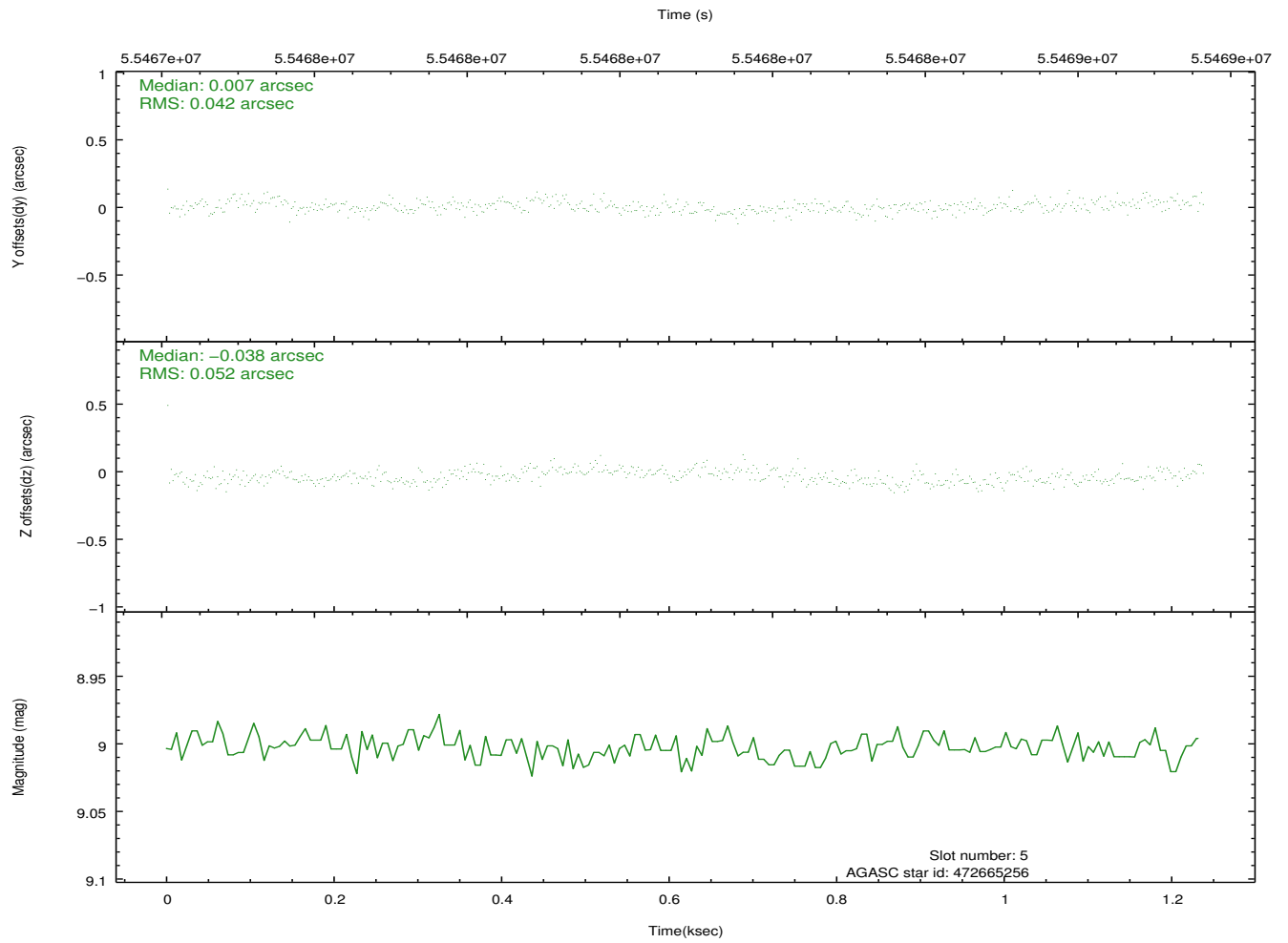
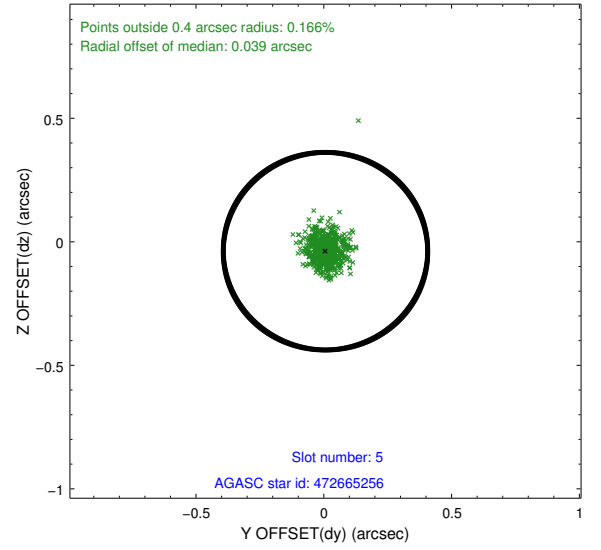
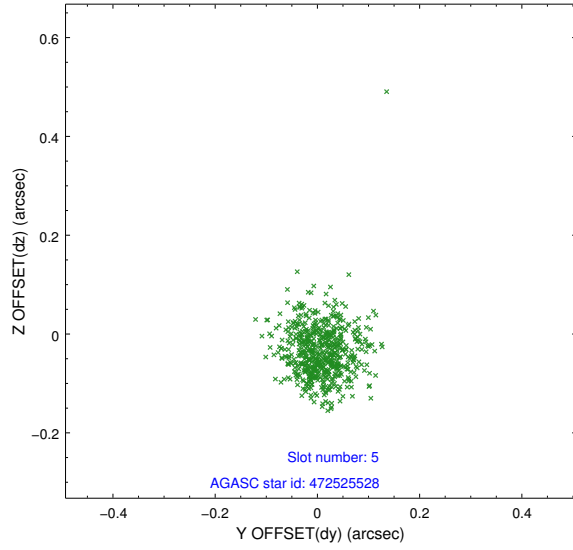
2.4.1 Slot 3



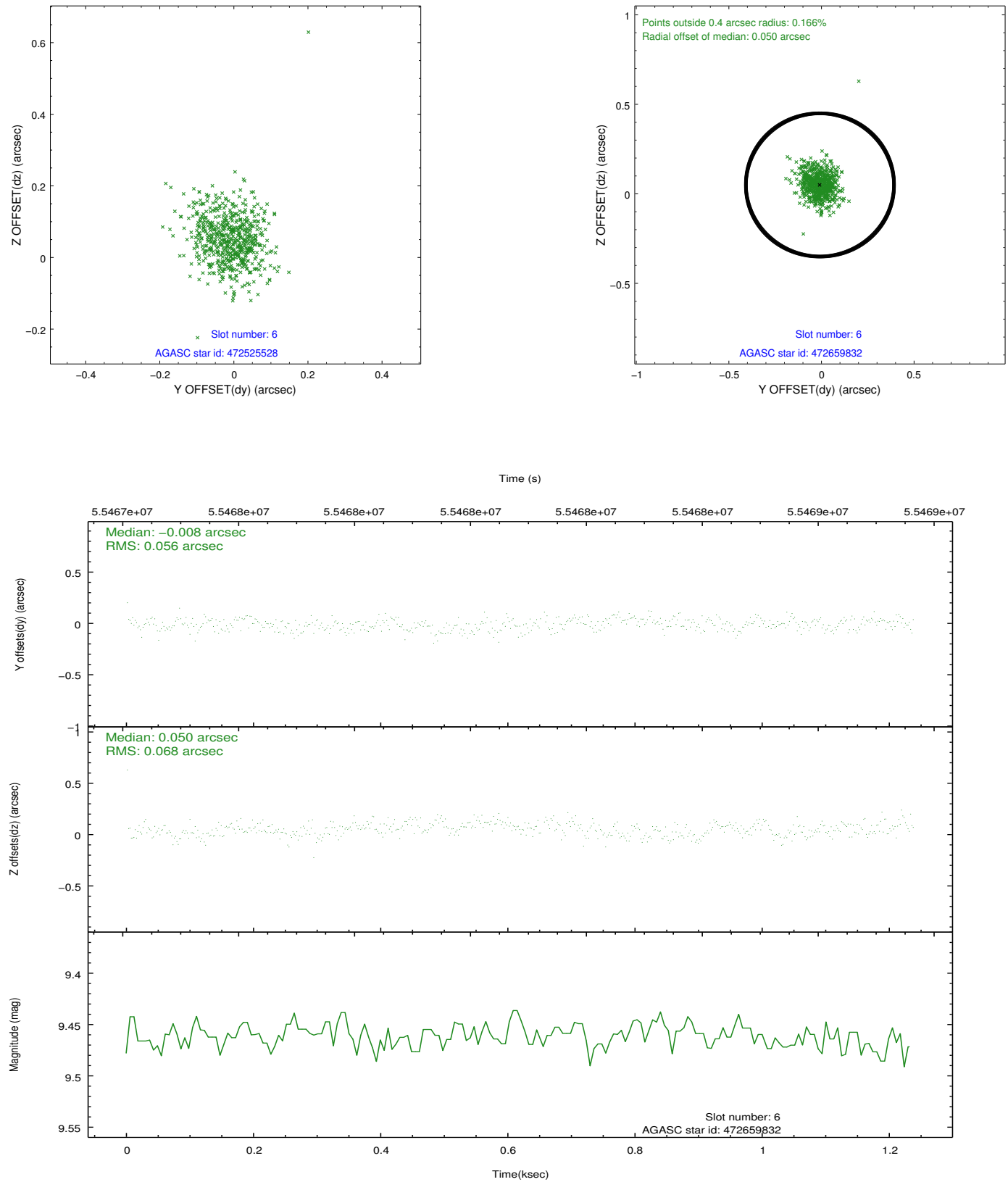
2.4.2 Slot 4



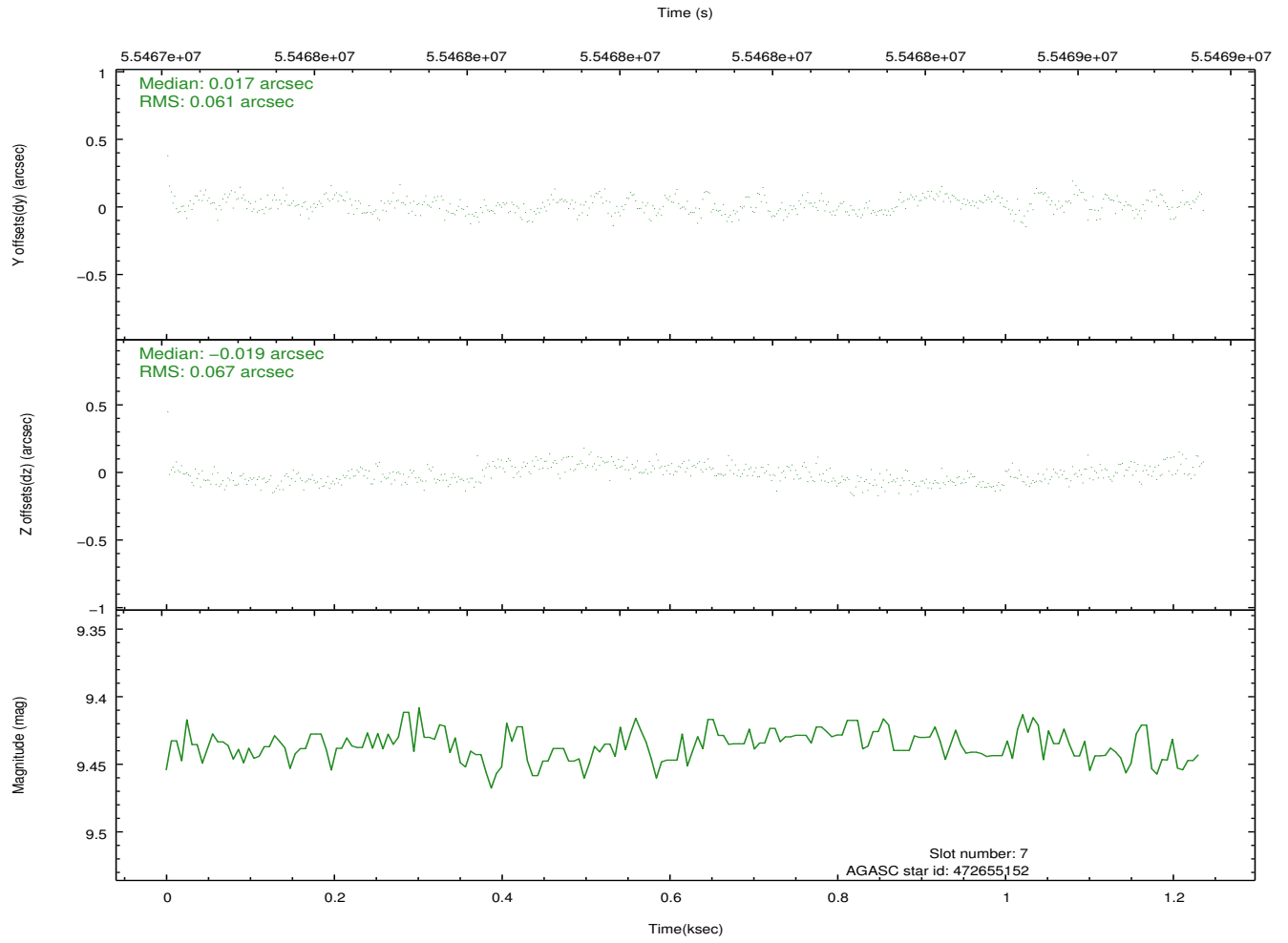
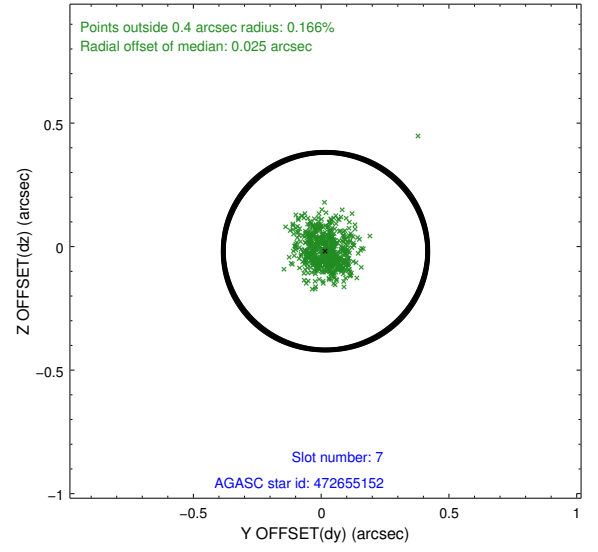
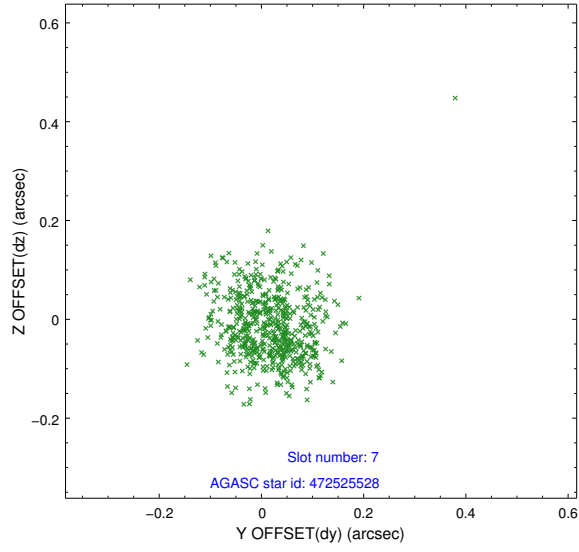
2.4.3 Slot 5



2.4.4 Slot 6

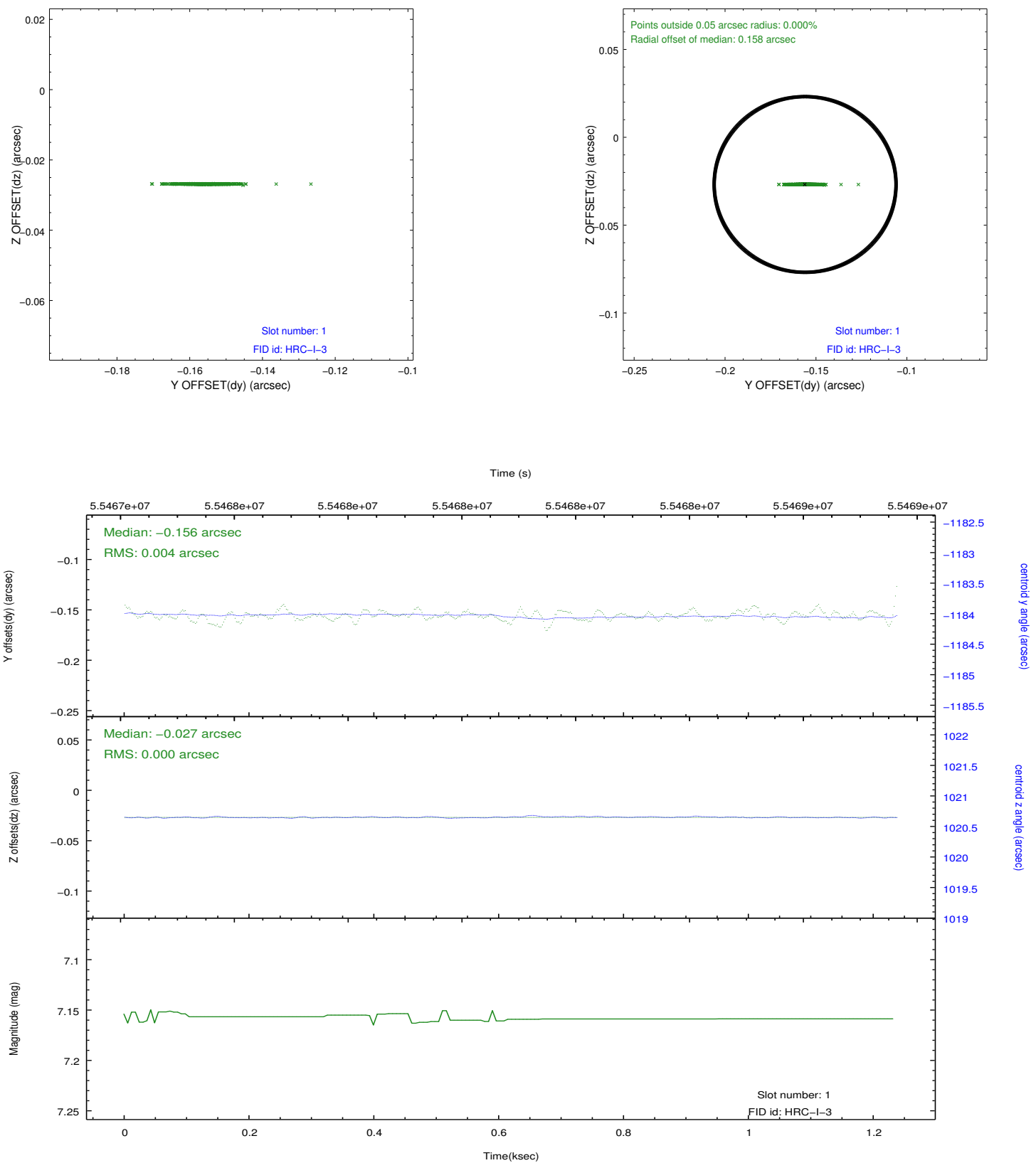


2.4.5 Slot 7

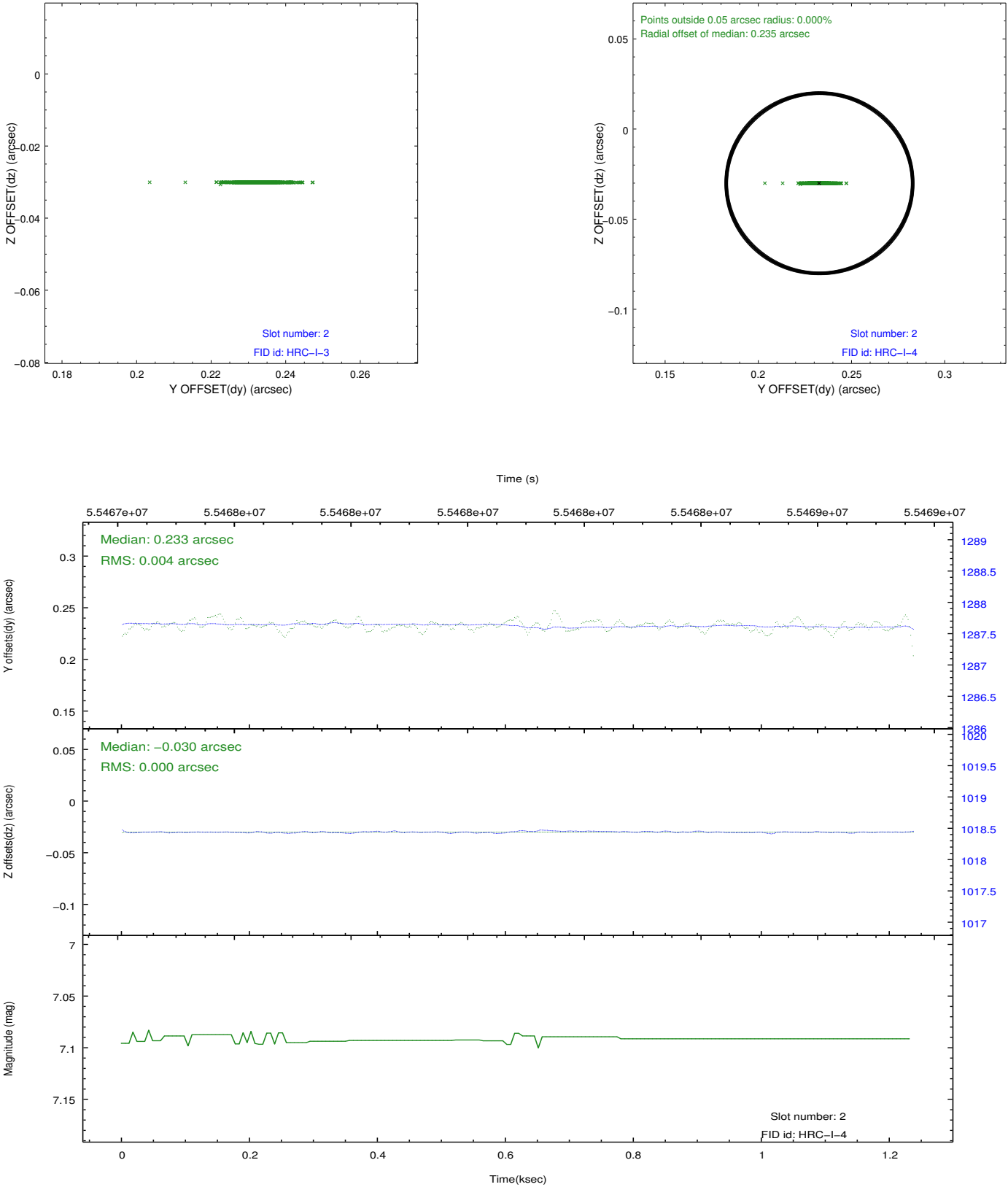


2.5 FID Slots

2.5.1 Slot 1



2.5.2 Slot 2



3 Point Sources

15.18 arcmin



A Summary

A.1 Status

V&V Scientist	Joy Nichols
V&V Date (YYYY-MM-DD)	2009.12.10
V&V Edition	1
V&V Disposition and Status	OK
V&V Charge Time	1.18

A.2 Comments

HRC-I calibration with AR Lac. AR Lac is not present in the field. The coordinates of the observation are correct.=====The fid light in slot 0 was removed from the aspect solution due to poor data quality. Only 2 fid lights were planned for this observation. The aspect solution is not expected to be degraded by removing one fid light from the solution.