

V&V Reference Report

L2 ASCDS Version : 8.2.1

Observation 62422 - L2 Version 3
Chandra X-Ray Center

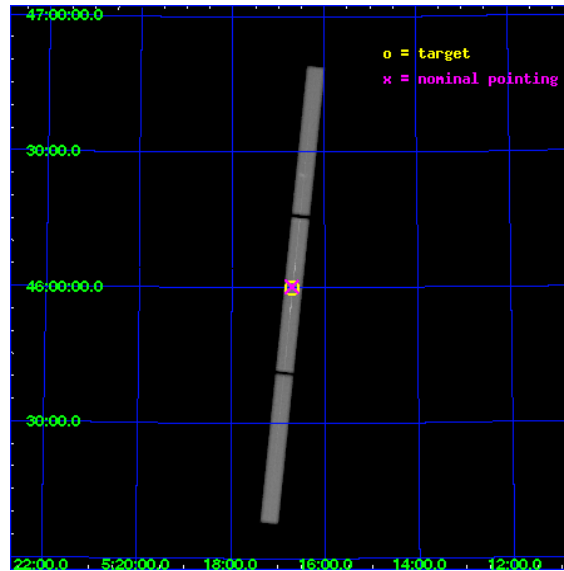
L2 Processing Date : Jan 13 2010

Contents

1	Front	2
2	OBI	3
2.1	OBI	3
2.1.1	Images	3
2.1.2	Parameters	4
2.1.3	Events	4
2.2	Compared Parameters	5
2.3	Aspect	6
2.4	Star Slots	9
2.4.1	Slot 3	9
2.4.2	Slot 4	10
2.4.3	Slot 5	11
2.4.4	Slot 6	12
2.4.5	Slot 7	13
2.5	FID Slots	14
2.5.1	Slot 0	14
2.5.2	Slot 1	15
2.5.3	Slot 2	16
3	Gratings	17
3.1	LETG Arm	17
A	Summary	19
A.1	Status	19
A.2	Comments	19

1 Front

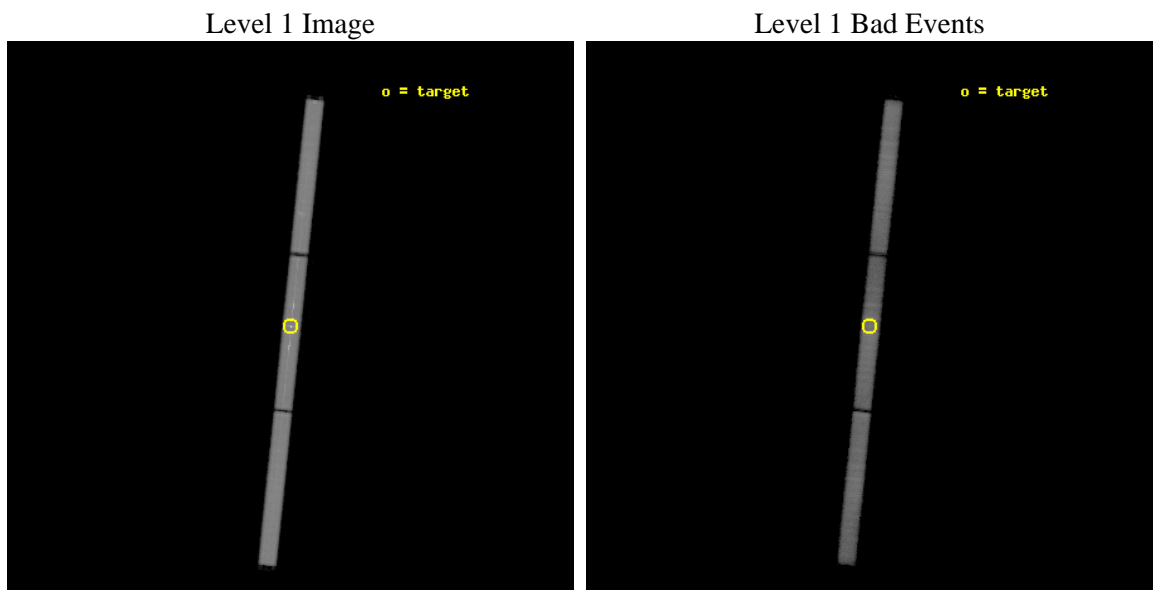
seq_num	290134	Sequence number
obs_id	62422	Observation id
title	GRATINGS CALIBRATION OBSERVATION OF AN EMISSION LINE SOURCE: CAPELLA	
observer	DR. CXC CALIBRATION	Principal investigator
object	CAPELLA	Source name
ra_targ	79.17625	Observer's specified target RA
dec_targ	45.997889	Observer's specified target Dec
ra_nom	79.176505905097	Nominal RA
dec_nom	46.00332032774	Nominal Dec
roll_nom	95.867155460103	Nominal Roll
revision	3	Processing version of data
ontime	11398.128532954	[s]
livetime	11292.906643544	Ontime multiplied by DTCOR
l2events	795354	Number of level 2 events



2 OBI

2.1 OBI

2.1.1 Images



2.1.2 Parameters

obi_num	0	Obi number	sched_exp_time	85400.000000	Scheduled observation exposure time
ascdsver	8.2.1	Processing system revision	ontime	11400.050409175	[s]
caldbver	4.1.5	 	ll events	1193066	Number of level 1 events
date	2010-01-13T12:45:06	Date and time of file creation			
revision	4	Processing version of data			

2.1.3 Events

Level 1 Events

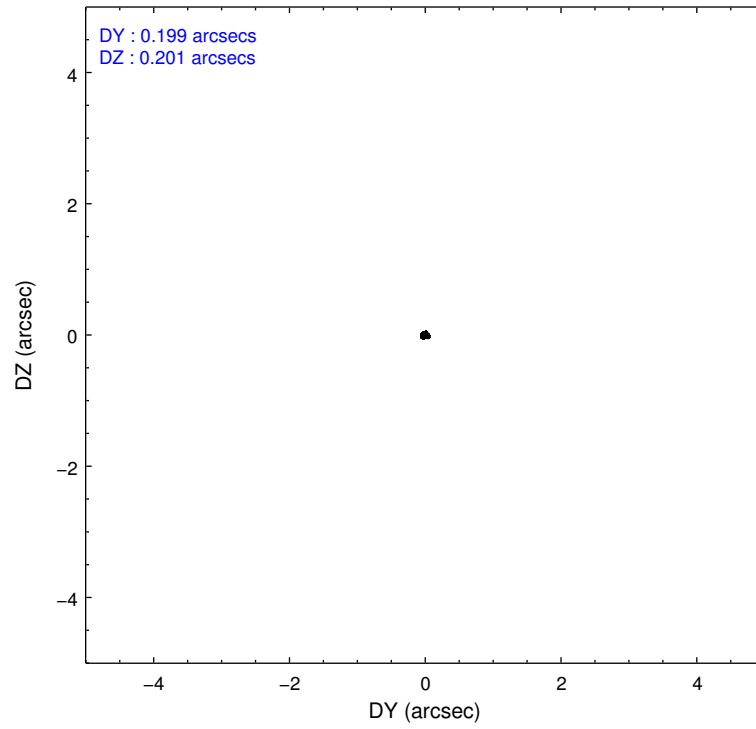
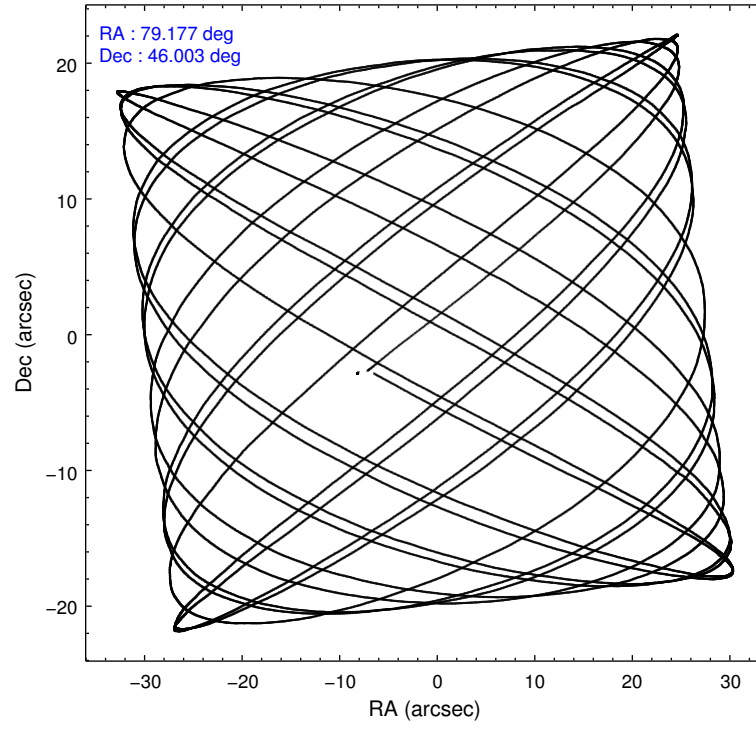
	segment 1	segment 2	segment 3
level 1 events	393314	413667	386085
rejected events	91985	96343	114143
rejected %	23%	23%	29%

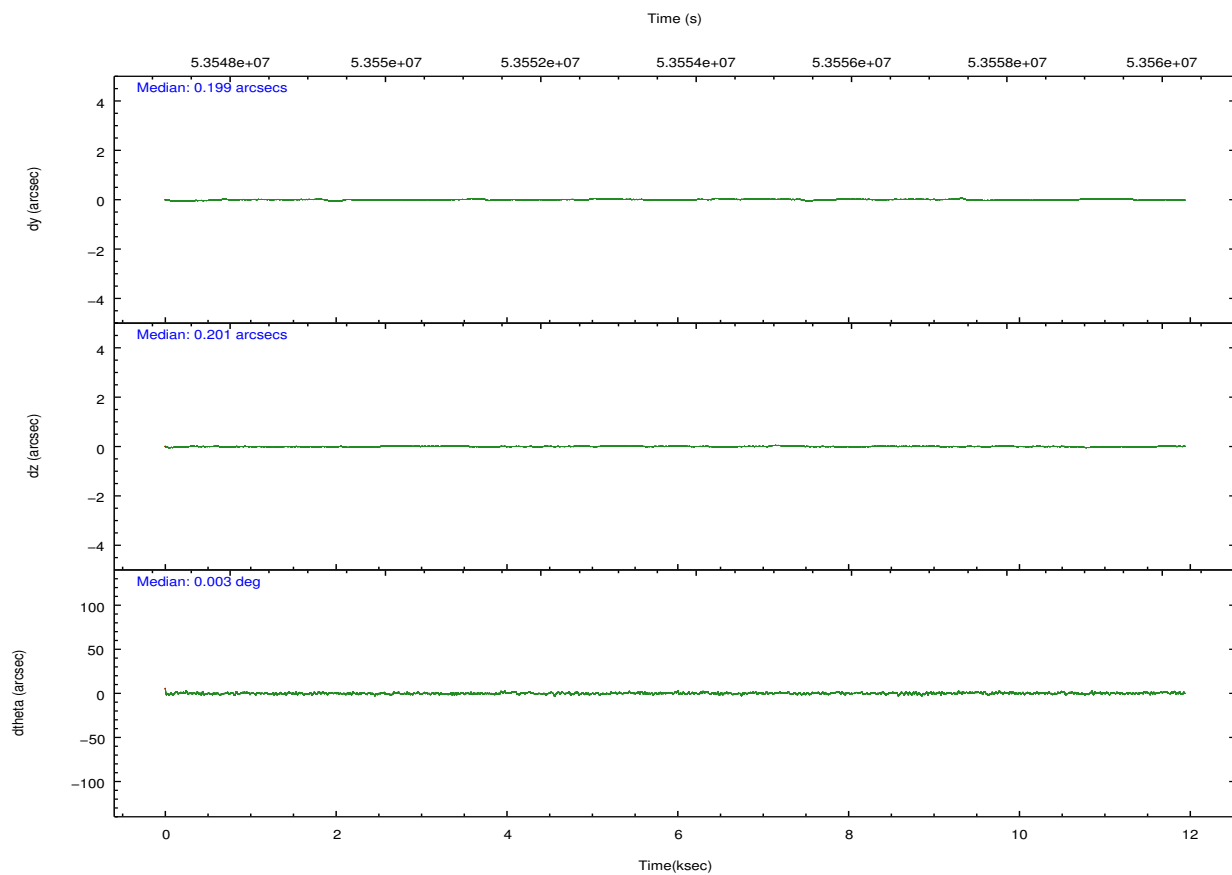
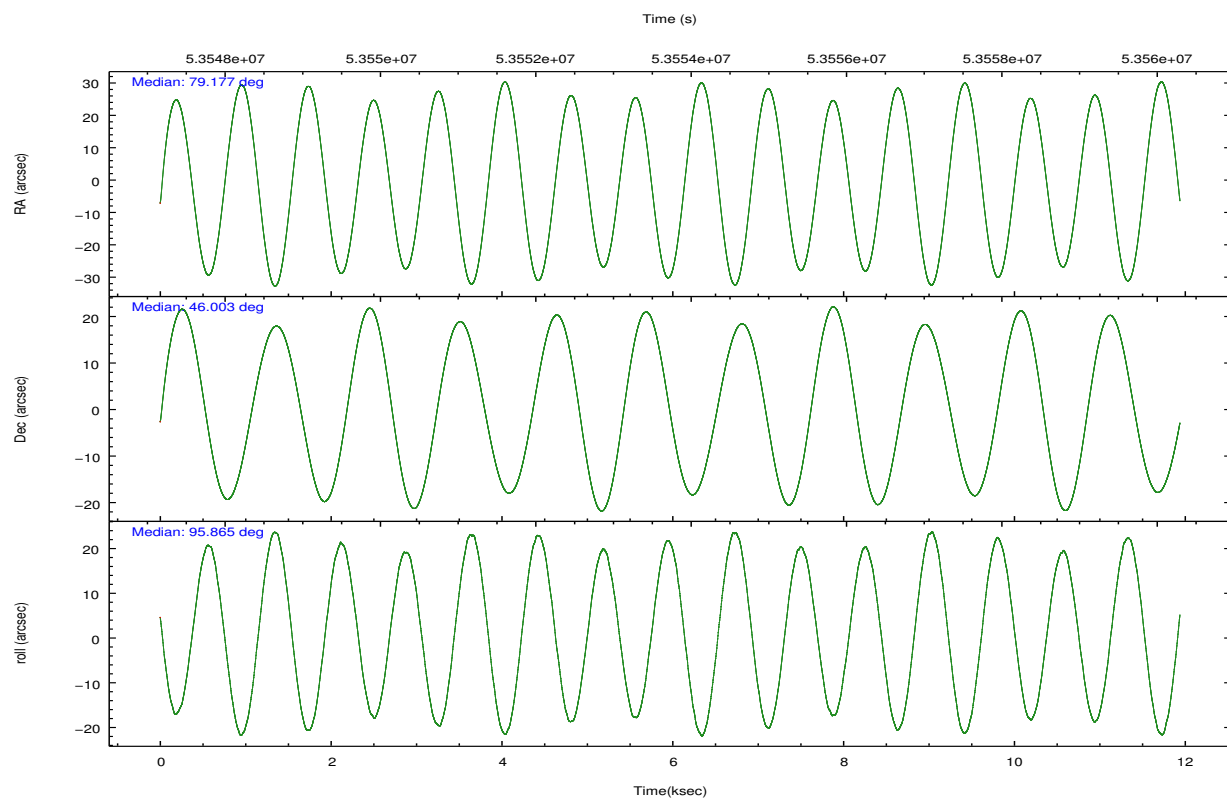
2.2 Compared Parameters

Parameter	Planned	Actual
Instrument	HRC	HRC
Detector	HRC-S	HRC-S
Grating	LETG	LETG
Data mode	OBSERVING	OBSERVING
Observation mode	POINTING	POINTING
Pointing RA	79.17625	79.17650590509737
Pointing Dec	45.997889	46.0033203277405
Pointing Roll	95.781851	95.86715546010331
SIM focus pos (mm)	-1.27598394818995	-1.27598394818995
SIM defocus (mm)	0.2573526149657934	0.2573526149657934
SIM translation stage pos (mm)	250.466033080201	250.466033080201
SIM translation stage offset (mm)	-0.0100572612062706	-0.0100572612062706
Observation start time	53547757.01103695	53547757.01103695
Observation start date	1999-09-12T18:22:37	1999-09-12T18:22:37
Observation end time	53559698.26146555	53559698.26146555
Observation end date	1999-09-12T21:41:38	1999-09-12T21:41:38

Parameter	Planned	Actual
Obspar format version number	6	6
Obspar file type	PREDICTED	ACTUAL
Obspar update status	OVERRIDE	OVERRIDE

2.3 Aspect



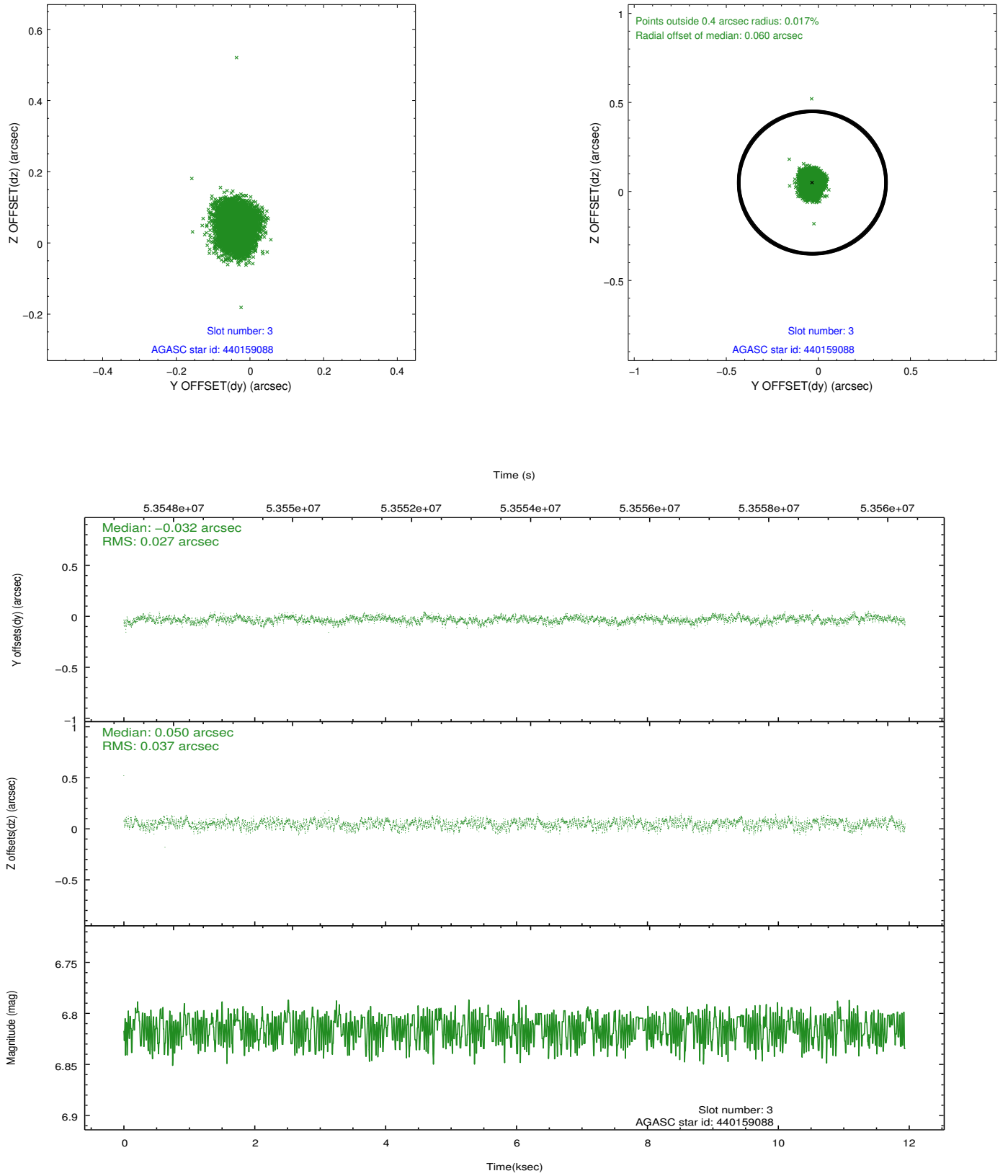


Slot Statistics

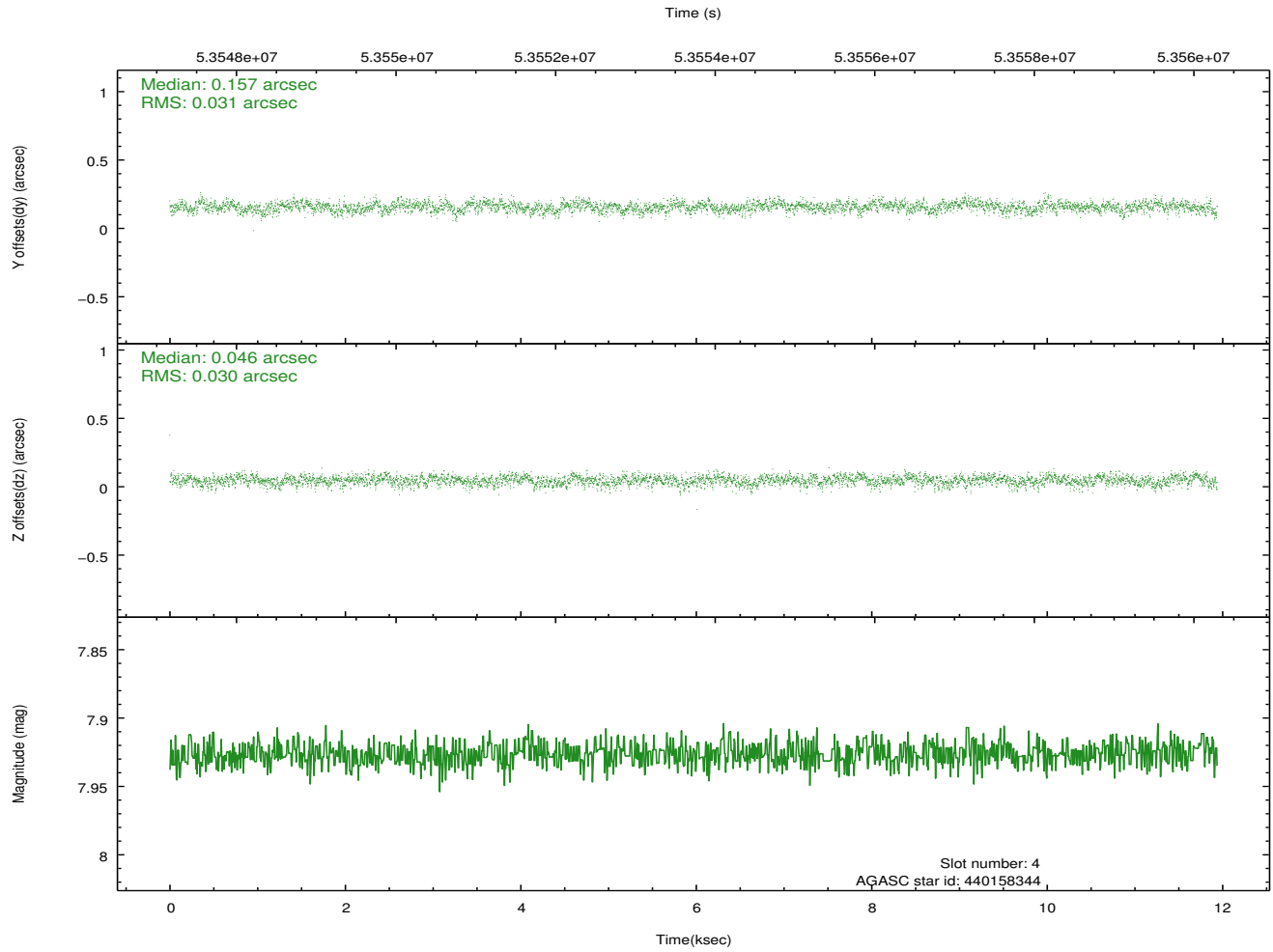
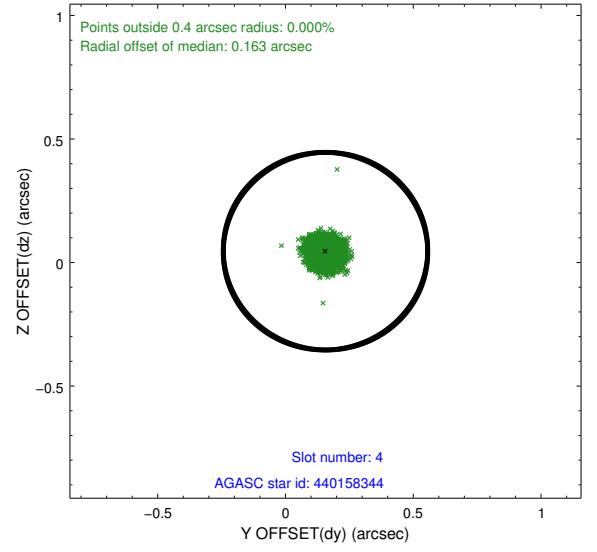
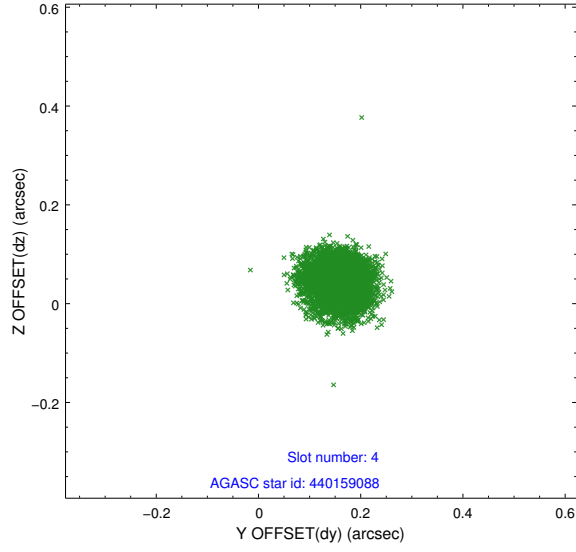
slot	status	id	mag	n_pts	med_dy	med_dz	dr1	dr2	ra	dec	mean_y	mean_z
0	FID	HRC-S-1	6.99	5825	0.157	-0.088	0.007	0.020	0.000000	0.000000	-1154.24	-448.38
1	FID	HRC-S-3	7.00	5824	0.118	-0.098	0.007	0.013	0.000000	0.000000	-1157.08	581.08
2	FID	HRC-S-4	6.98	5824	0.113	-0.112	0.005	0.012	0.000000	0.000000	1243.93	583.53
3	GUIDE	440159088	6.81	5824	-0.032	0.050	0.049	0.077	79.453034	46.128063	467.82	-677.01
4	GUIDE	440158344	7.93	5825	0.157	0.046	0.046	0.075	79.344888	45.394991	-2131.51	-147.56
5	GUIDE	440149808	8.91	5823	-0.052	-0.093	0.062	0.101	78.873930	46.405955	1608.52	655.43
6	GUIDE	438438936	8.97	5824	-0.181	-0.099	0.079	0.129	78.241026	46.550197	2295.96	2158.87
7	GUIDE	440145944	9.09	5819	0.114	0.100	0.079	0.126	80.083717	45.428844	-2186.11	-2017.48

2.4 Star Slots

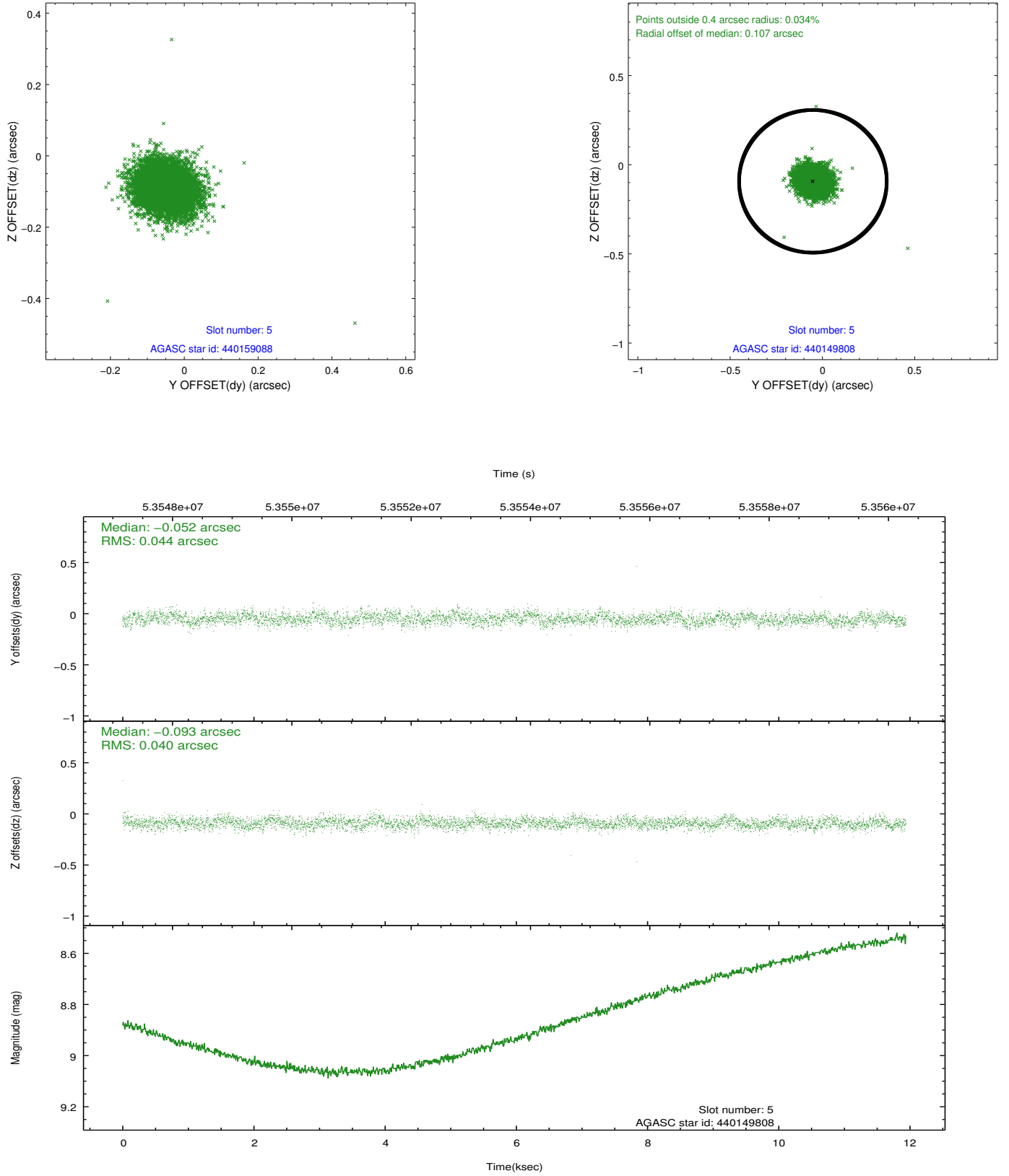
2.4.1 Slot 3



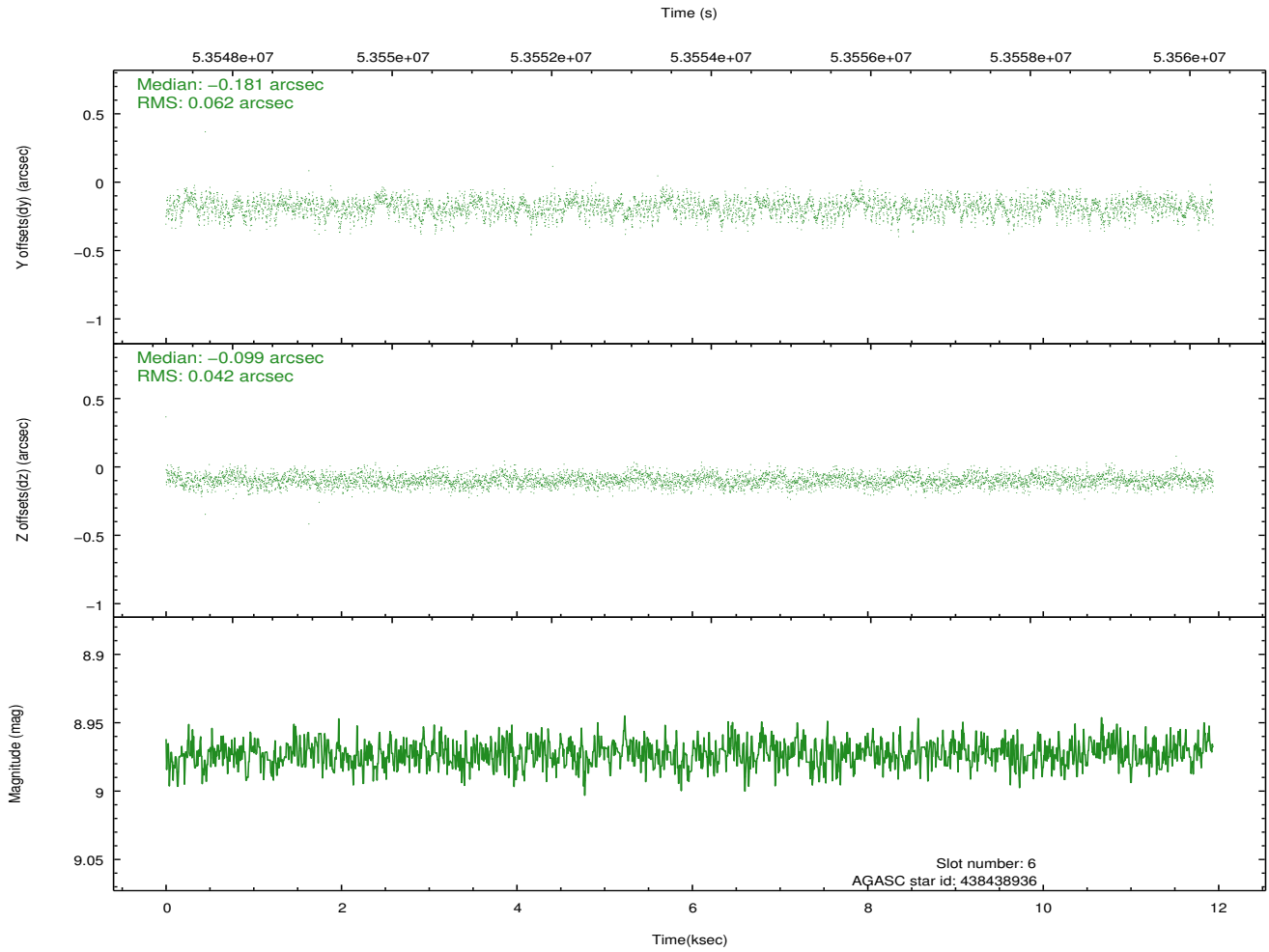
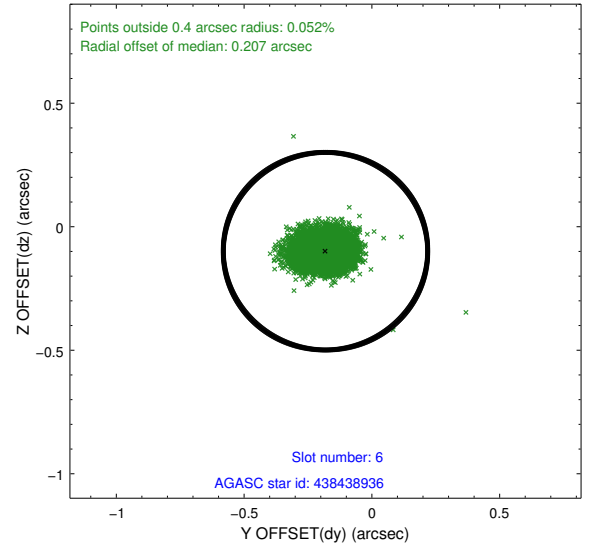
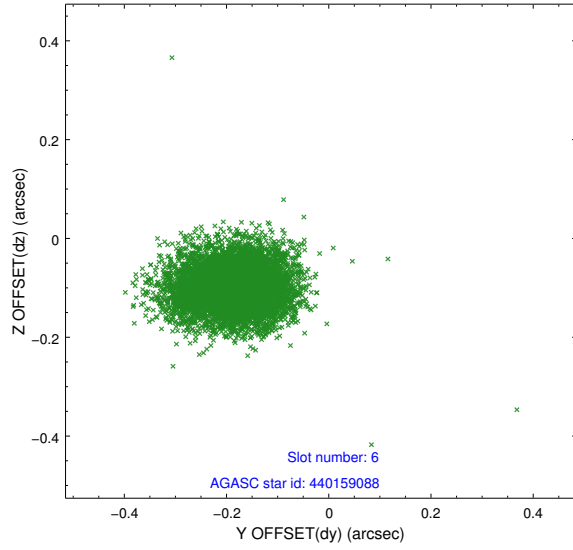
2.4.2 Slot 4



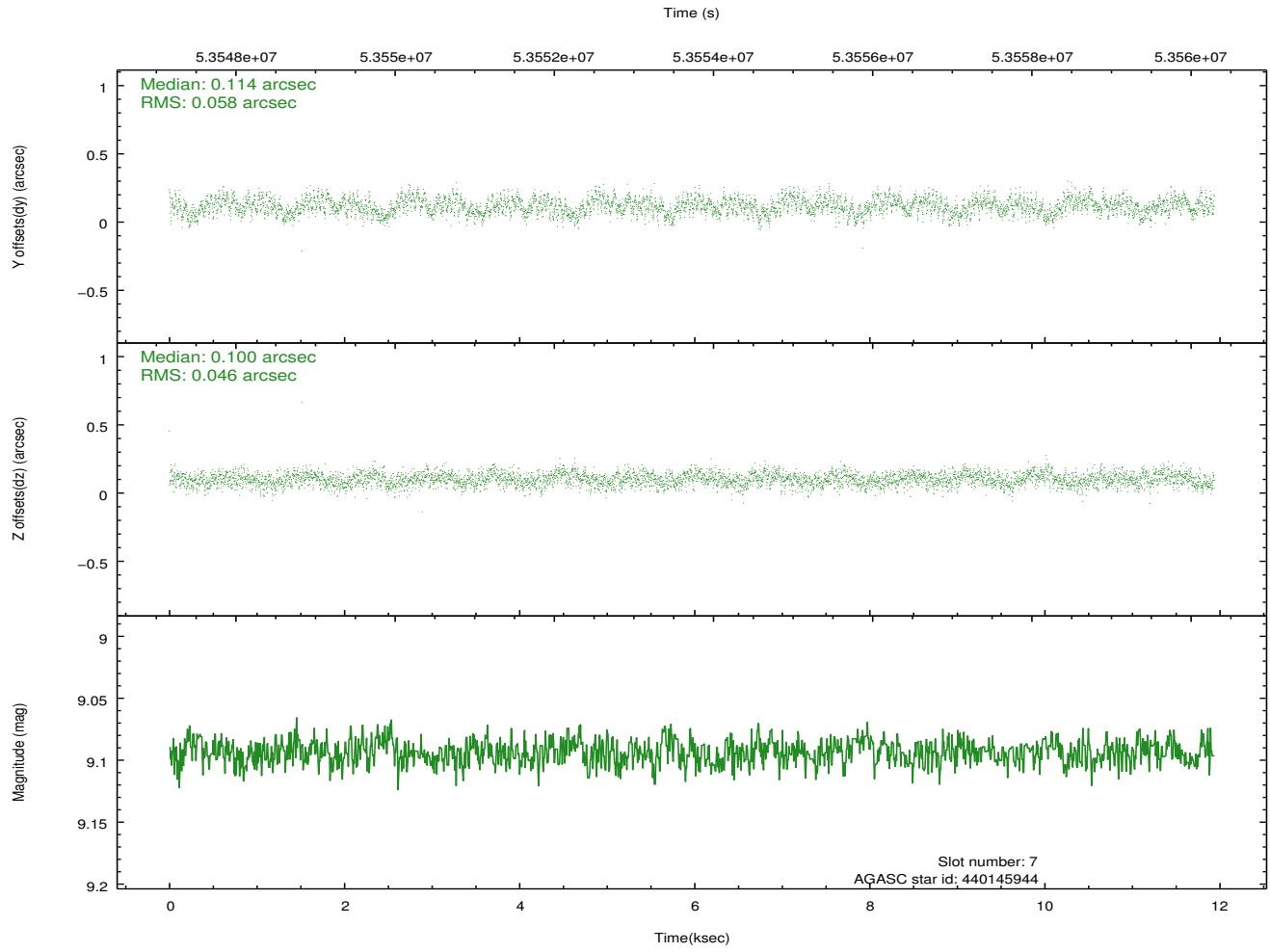
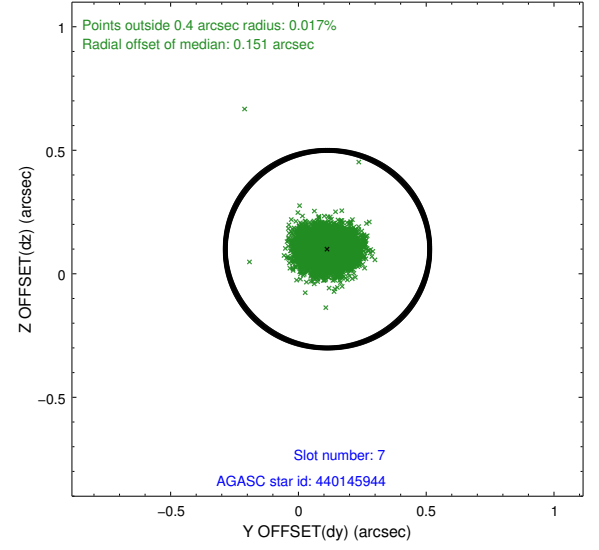
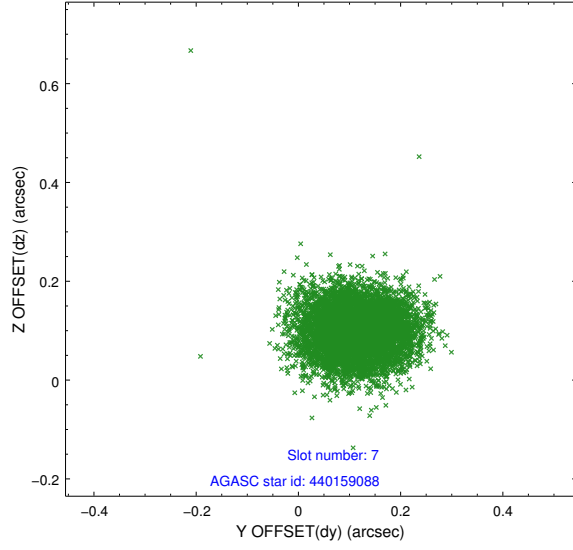
2.4.3 Slot 5



2.4.4 Slot 6

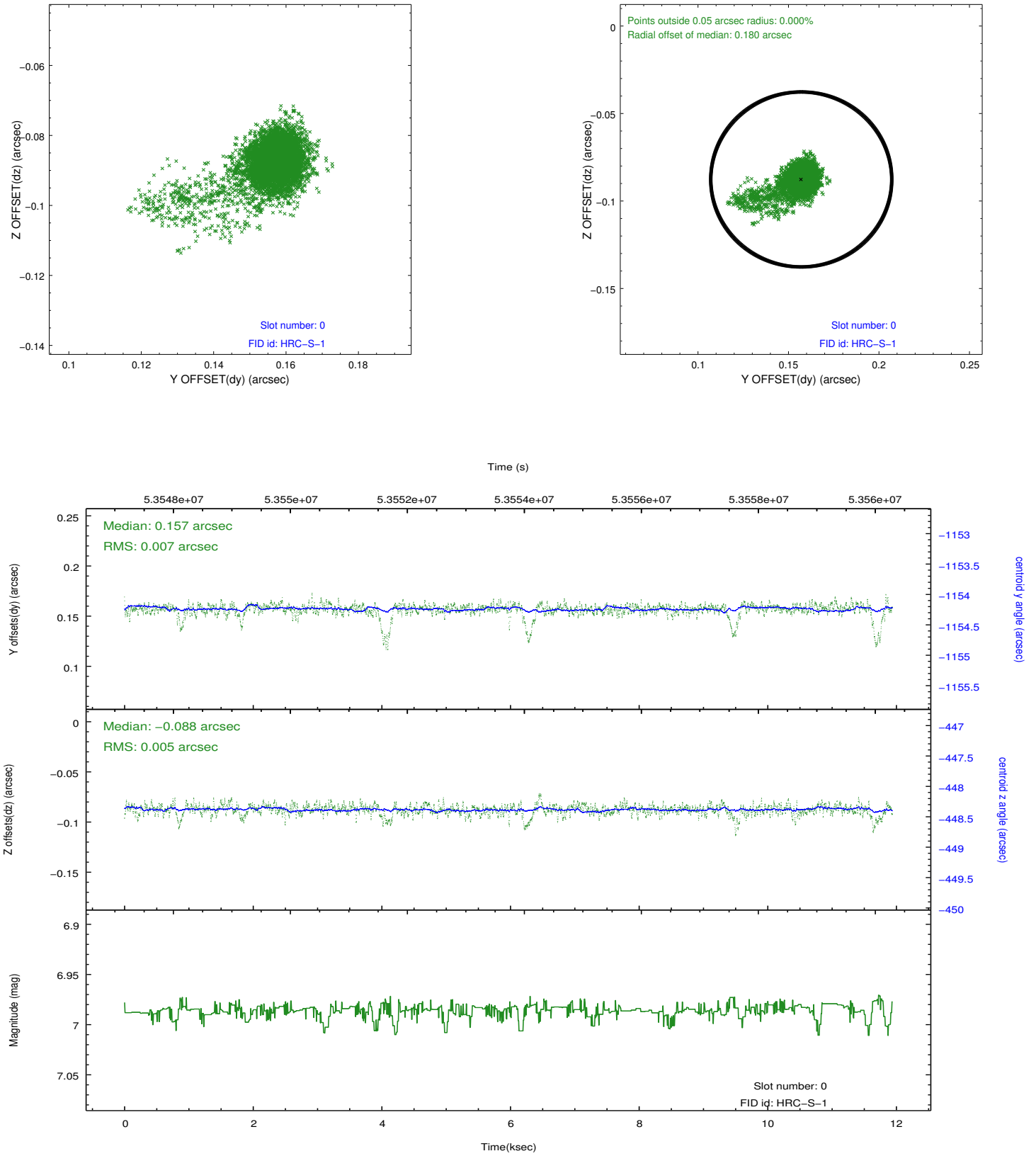


2.4.5 Slot 7

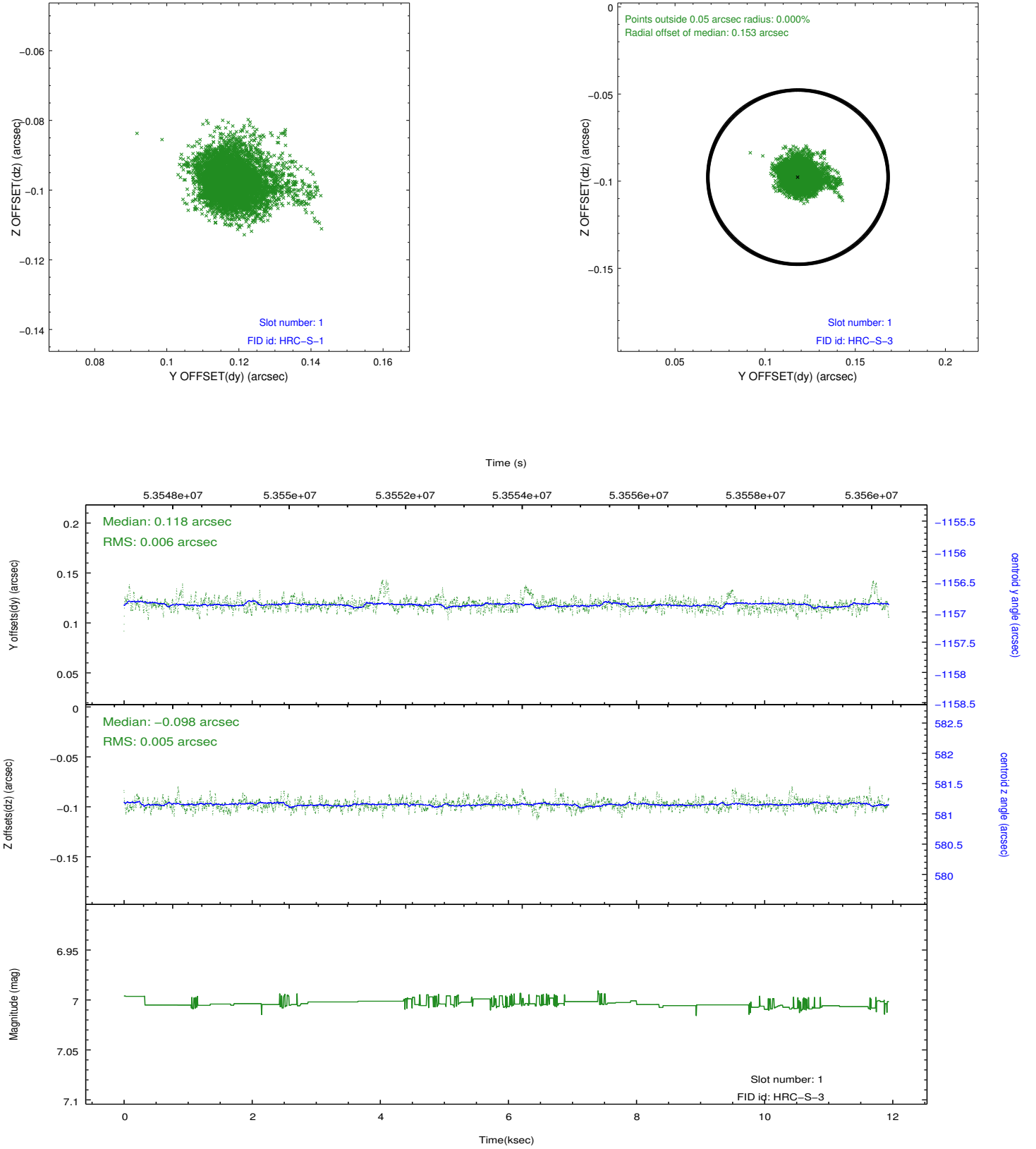


2.5 FID Slots

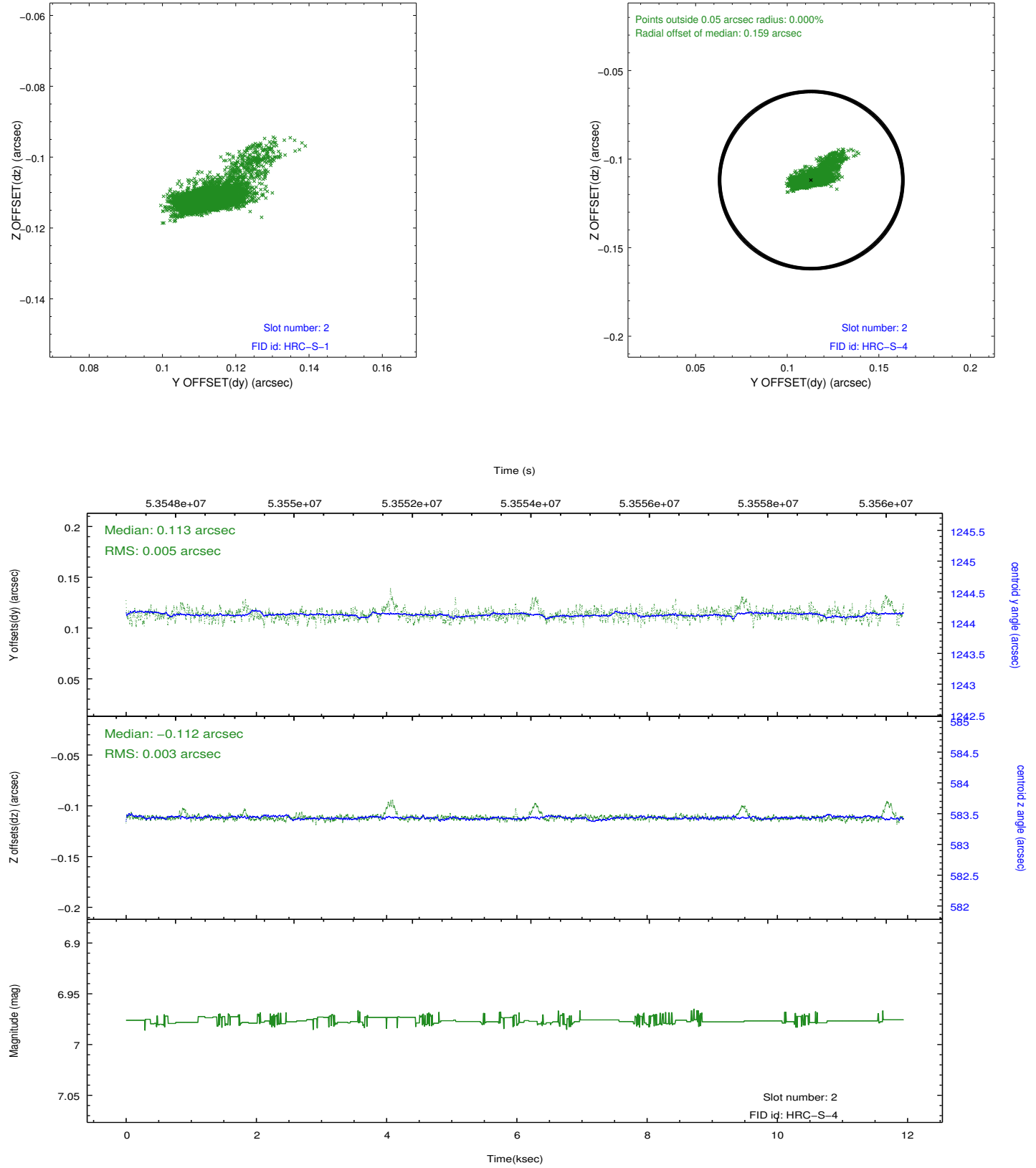
2.5.1 Slot 0



2.5.2 Slot 1

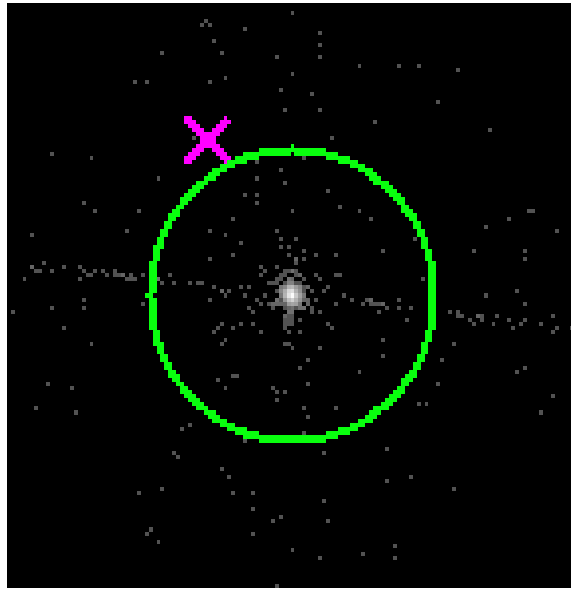


2.5.3 Slot 2

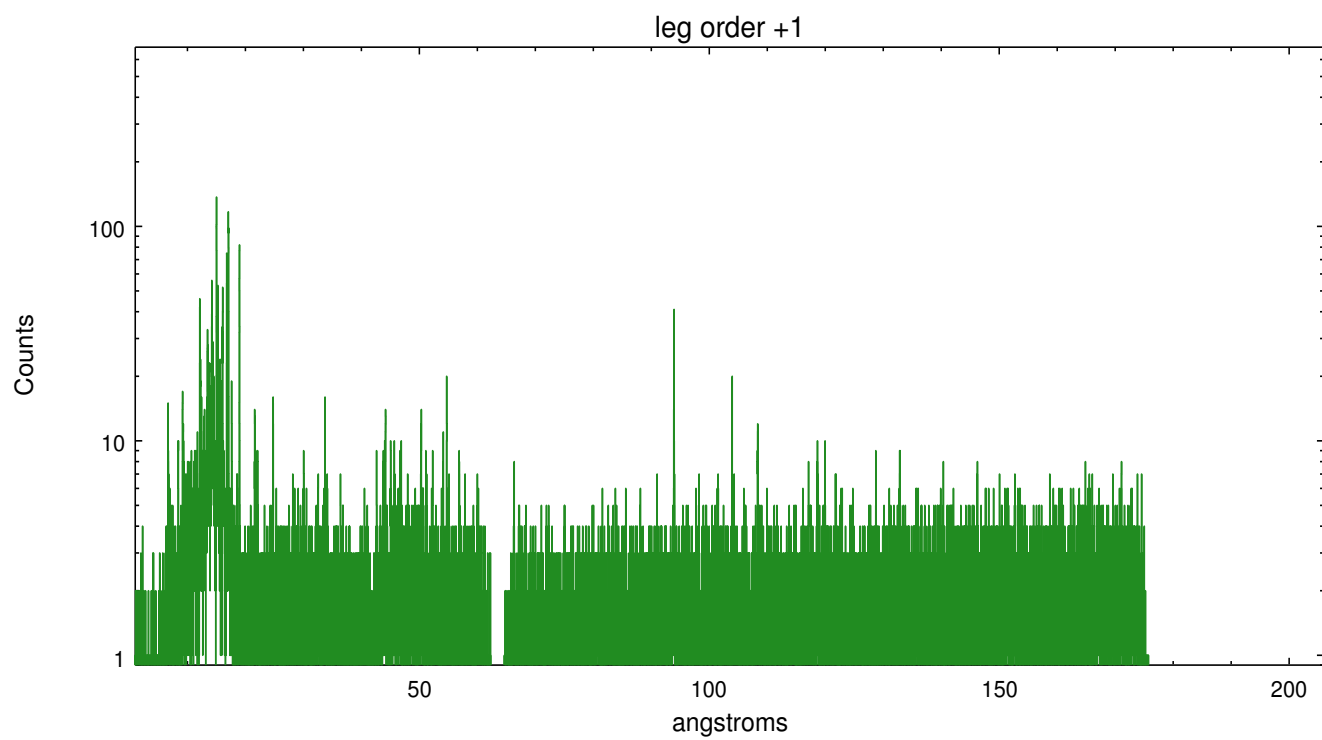
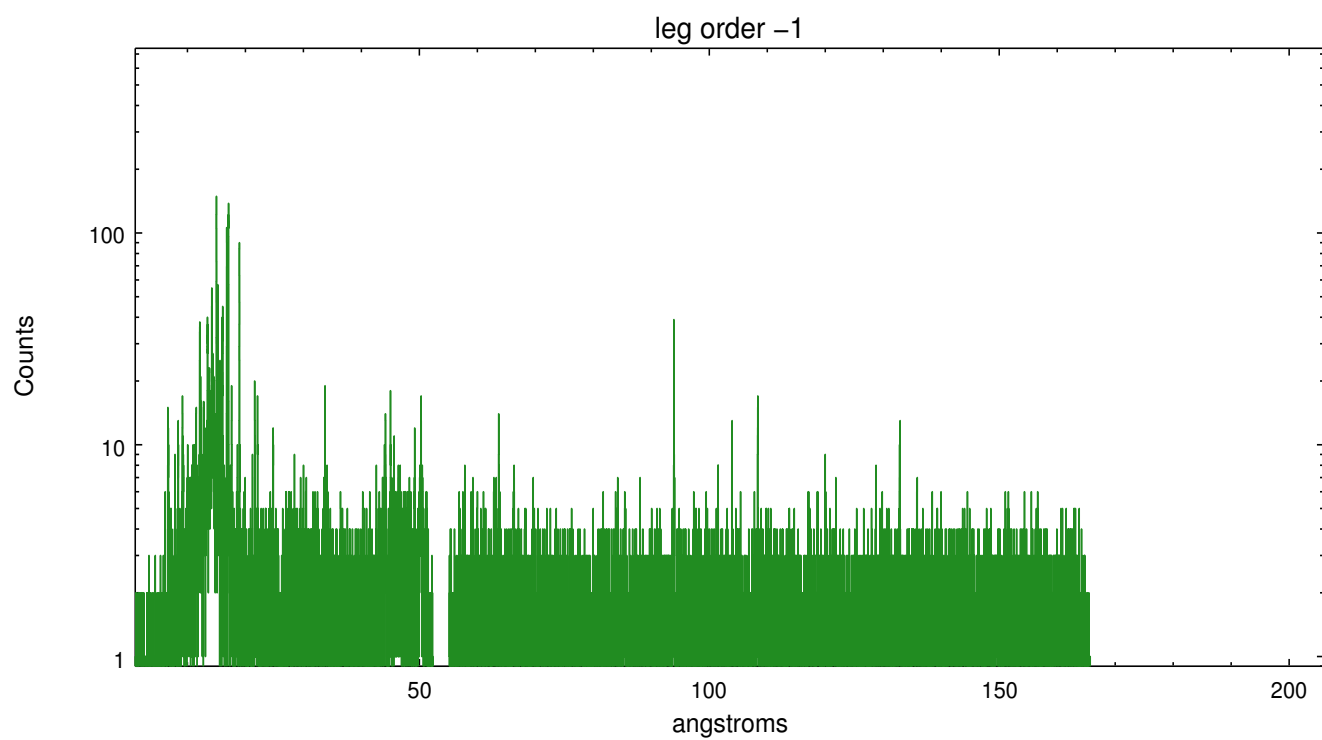


3 Gratings

3.1 LETG Arm



LETG Zero Order



A Summary

A.1 Status

V&V Scientist	Joy Nichols
V&V Date (YYYY-MM-DD)	2010.05.13
V&V Edition	1
V&V Disposition and Status	OK
V&V Charge Time	11.393

A.2 Comments

Simultaneous observation with HST.