

V&V Reference Report

L2 ASCDS Version : 8.3.2.1

Observation 1330 - L2 Version 4

Chandra X-Ray Center

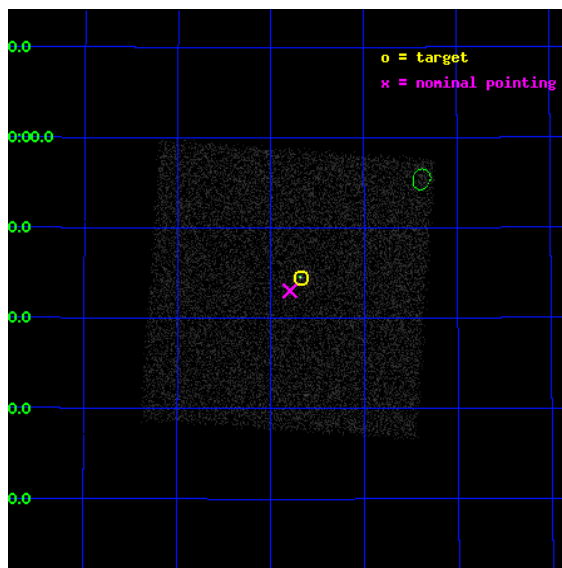
L2 Processing Date : Sep 28 2010

Contents

1	Front	2
2	OBI	3
2.1	OBI	3
2.1.1	Images	3
2.1.2	Parameters	4
2.1.3	Events	4
2.2	Compared Parameters	5
2.3	Aspect	6
2.4	Star Slots	9
2.4.1	Slot 3	9
2.4.2	Slot 4	10
2.4.3	Slot 5	11
2.4.4	Slot 6	12
2.4.5	Slot 7	13
2.5	FID Slots	14
2.5.1	Slot 0	14
2.5.2	Slot 1	15
2.5.3	Slot 2	16
3	Point Sources	17
A	Summary	18
A.1	Status	18
A.2	Comments	18

1 Front

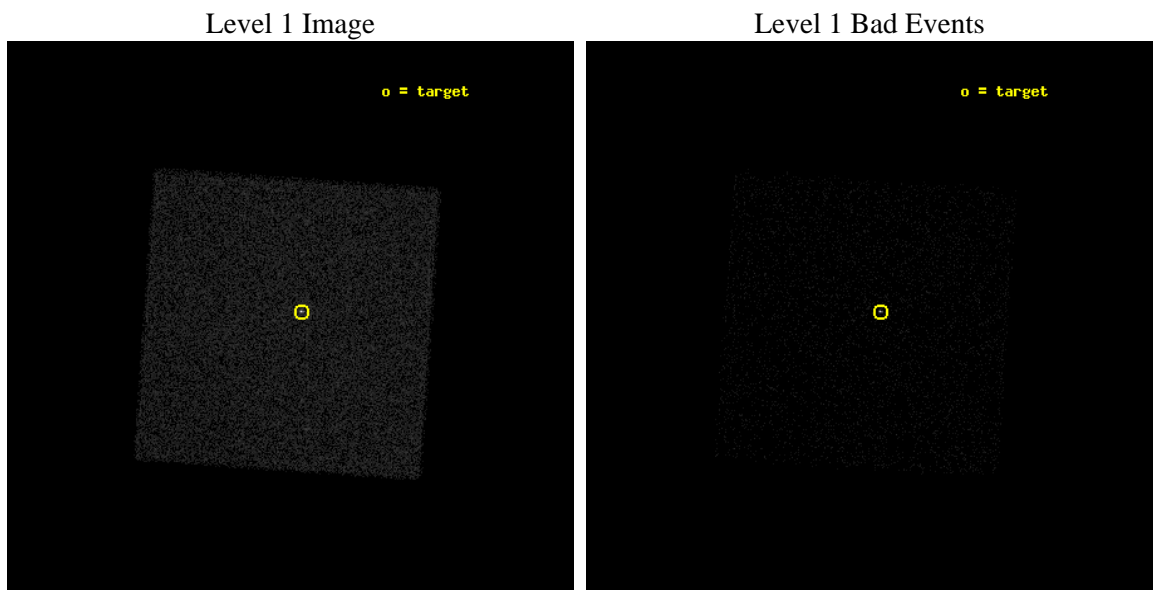
seq_num	280280	Sequence number
obs_id	1330	Observation id
title	 	Proposal title
observer	Dr. CXC Calibration	Principal investigator
object	ArLac	Source name
ra_targ	332.1701	Observer's specified target RA
dec_targ	45.7423	Observer's specified target Dec
ra_nom	332.19891295074	Nominal RA
dec_nom	45.717683941696	Nominal Dec
roll_nom	228.98630702099	Nominal Roll
revision	4	Processing version of data
ontime	752.35002714396	[s]
livetime	747.04959275777	Ontime multiplied by DTCOR
l2events	25285	Number of level 2 events



2 OBI

2.1 OBI

2.1.1 Images



2.1.2 Parameters

obi_num	0	Obi number	sched_exp_time	1000.000000	Scheduled observation exposure time
ascdsver	8.3.2.1	Processing system revision	ontime	752.35002714396	[s]
caldbver	4.3.1	 	l1events	68843	Number of level 1 events
date	2010-09-28T17:06:20	Date and time of file creation			
revision	4	Processing version of data			

2.1.3 Events

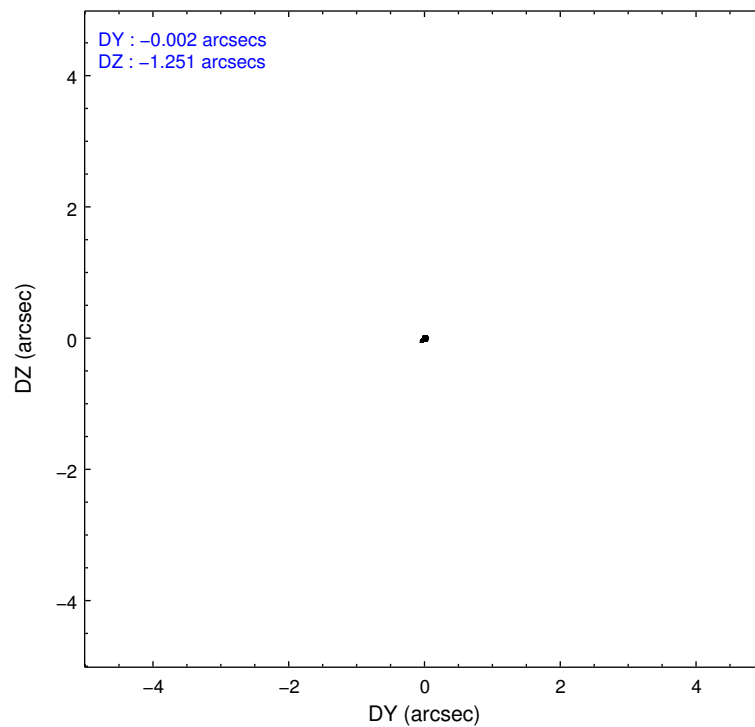
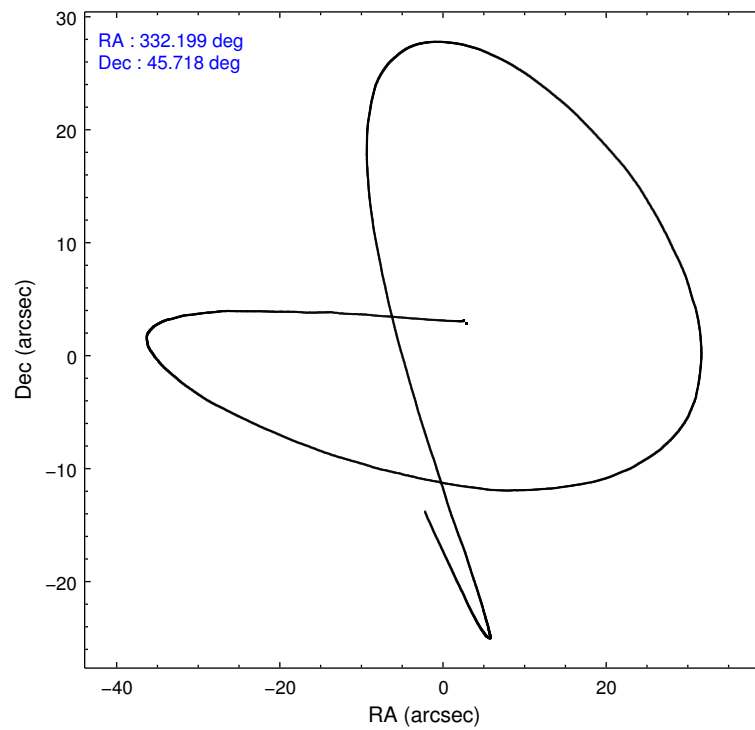
Level 1 Events

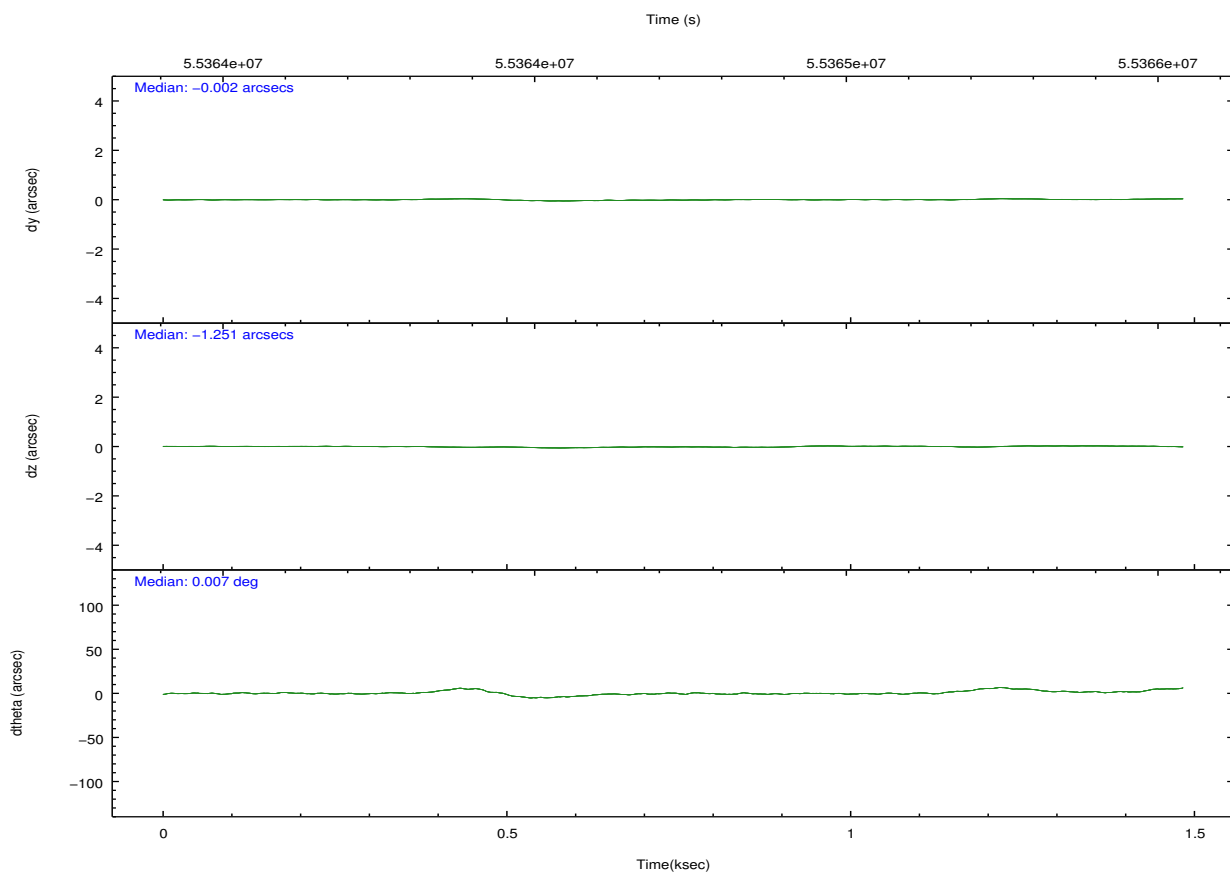
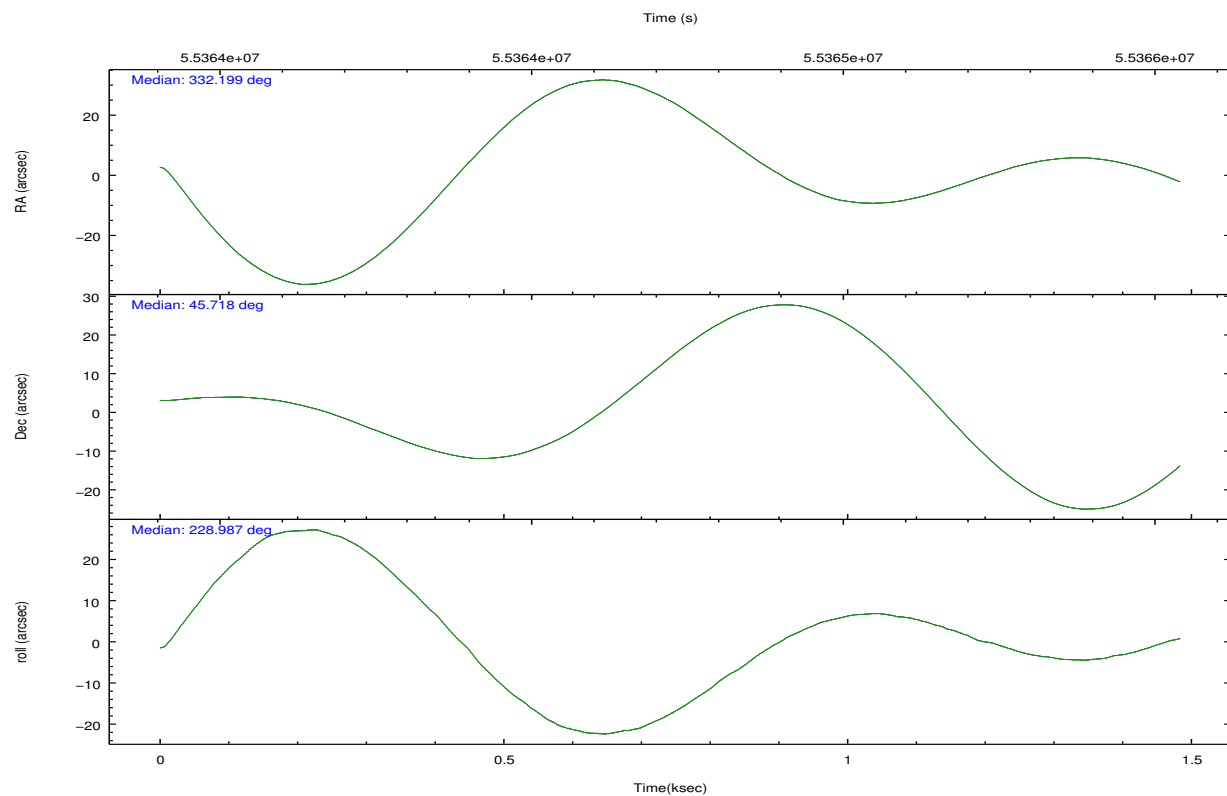
	segment 0
level 1 events	68843
rejected events	29626
rejected %	43%

2.2 Compared Parameters

Parameter	Planned	Actual	Parameter	Planned	Actual
Instrument	HRC	HRC	Obspar format version number	6	6
Detector	HRC-I	HRC-I	Obspar file type	PREDICTED	ACTUAL
Grating	NONE	NONE	Obspar update status	NONE	UPDATED
Data mode	OBSERVING	OBSERVING			
Observation mode	POINTING	POINTING			
Pointing RA	332.207361	332.1989129507353			
Pointing Dec	45.745348	45.71768394169574			
Pointing Roll	229.075710	228.9863070209934			
SIM focus pos (mm)	-0.040293	-0.2342646132009995			
SIM defocus (mm)	1	0.806028007457875			
SIM translation stage pos (mm)	126.985494	126.9854943052878			
SIM translation stage offset (mm)	0	-5.413686238853188e-06			
Observation start time	55364464.184000	55363798.269427			
Observation start date	1999-10-03T19:00:00	1999-10-03T18:49:58			
Observation end time	55365464.184000	55365597.656992			
Observation end date	1999-10-03T19:16:40	1999-10-03T19:19:57			

2.3 Aspect



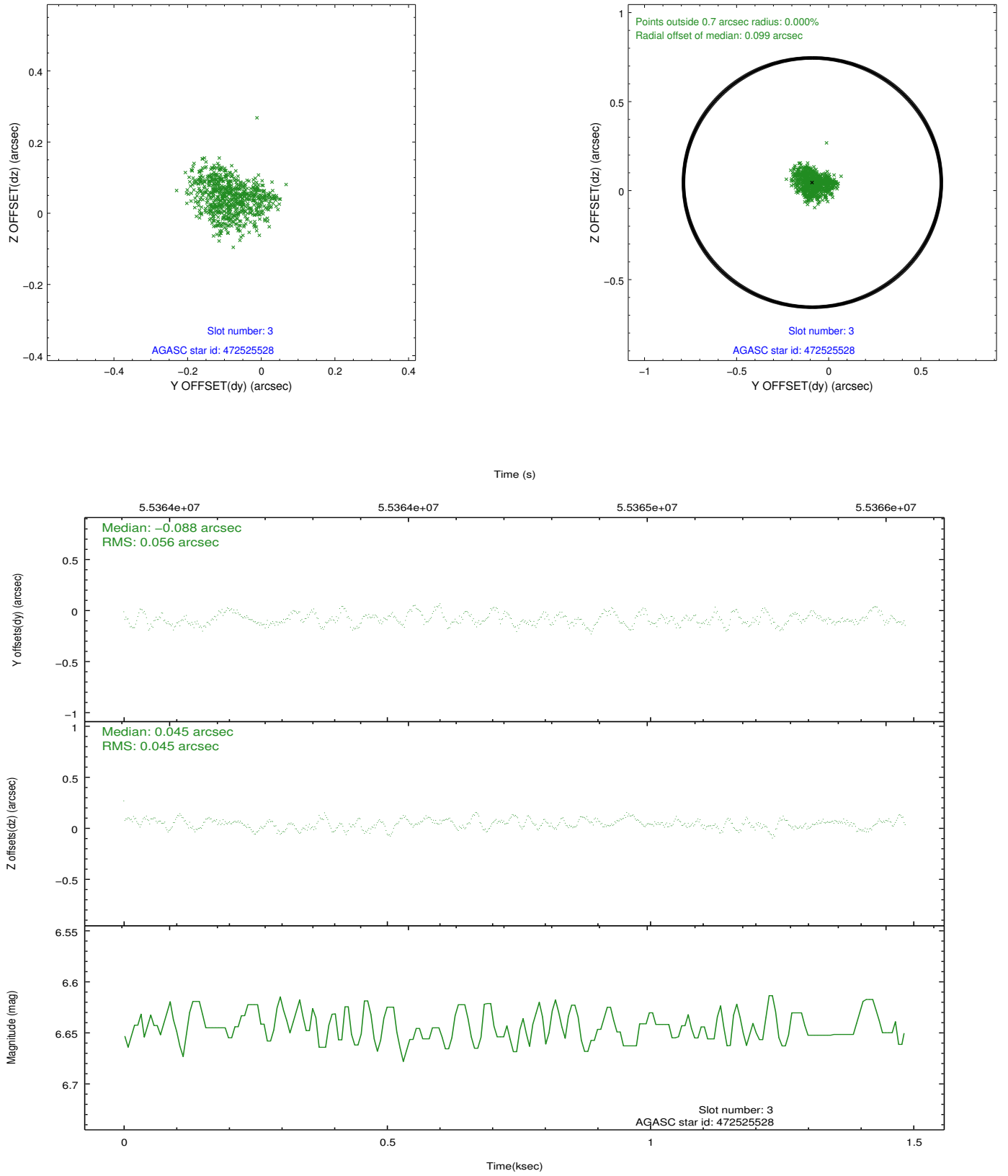


Slot Statistics

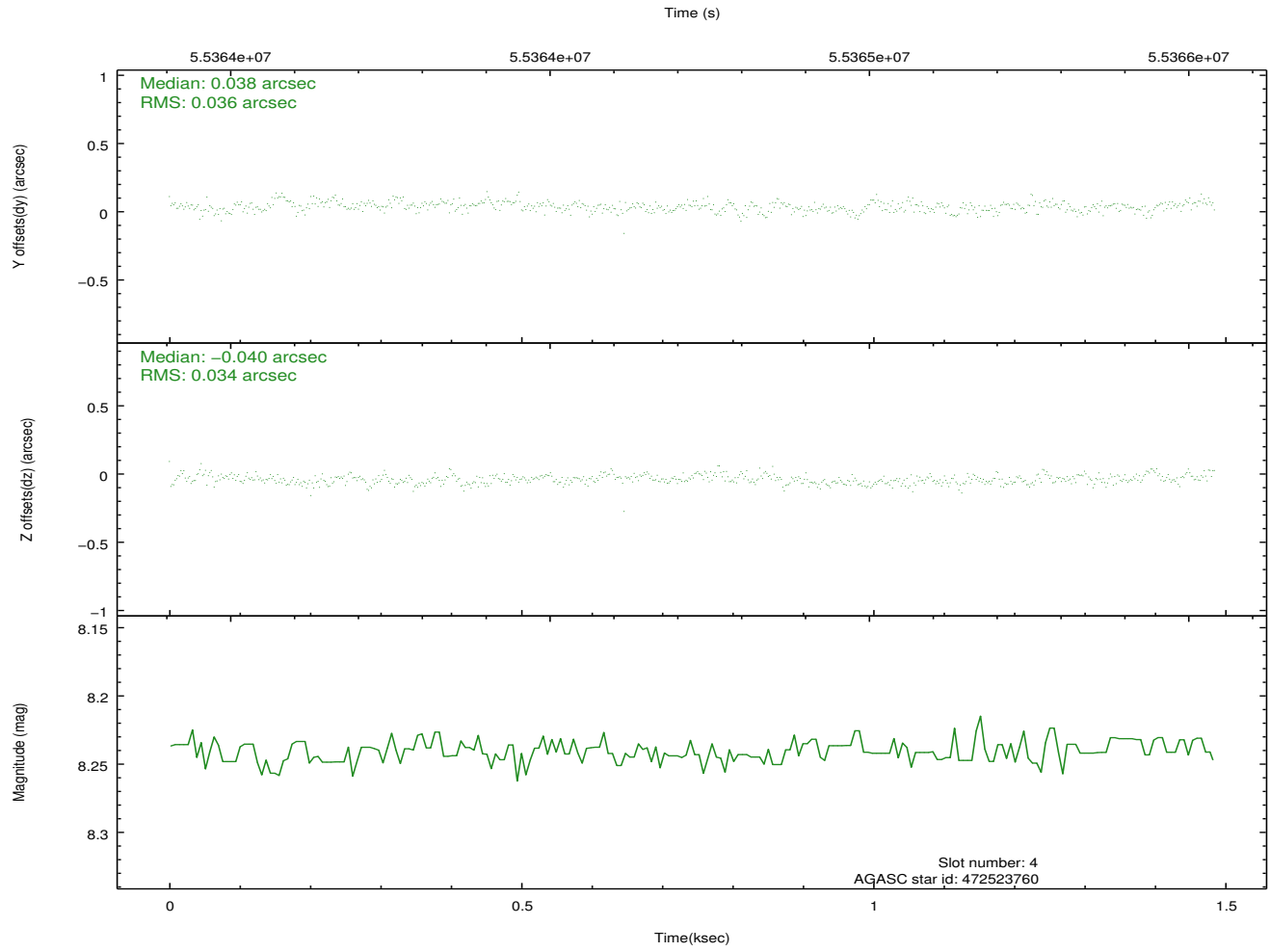
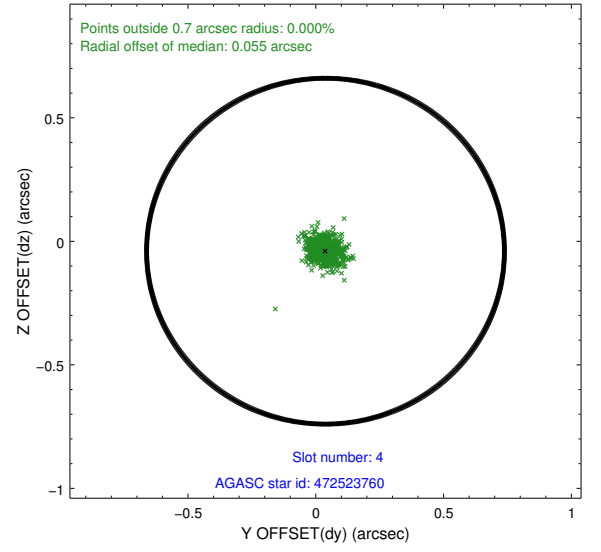
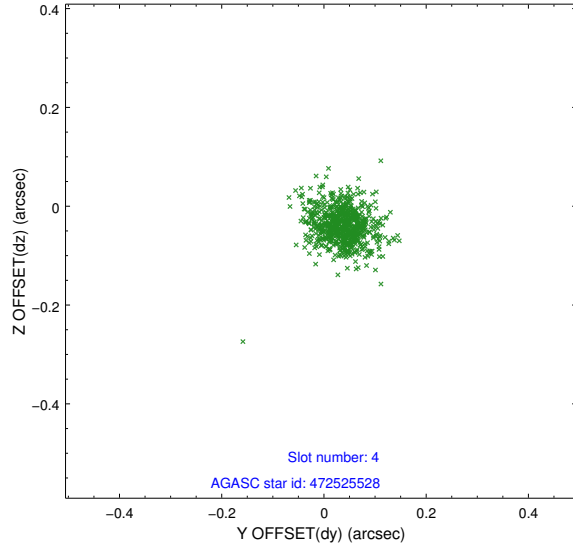
slot	status	id	mag	n_pts	med_dy	med_dz	dr1	dr2	ra	dec	mean_y	mean_z
0	FID	HRC-I-1	6.94	725	0.052	-0.010	0.019	0.068	0.000000	0.000000	-755.38	-1286.53
1	FID	HRC-I-3	7.02	725	0.054	-0.031	0.012	0.066	0.000000	0.000000	-1184.99	1016.40
2	FID	HRC-I-4	6.96	725	0.009	-0.048	0.014	0.036	0.000000	0.000000	1285.85	1017.22
3	GUIDE	472525528	6.65	725	-0.088	0.045	0.080	0.121	331.551102	45.248694	2432.39	-90.31
4	GUIDE	472523760	8.24	725	0.038	-0.040	0.051	0.087	331.645363	45.403260	1857.76	-270.37
5	GUIDE	472665256	9.00	725	0.012	-0.018	0.062	0.101	332.808125	46.195041	-2208.43	66.30
6	GUIDE	472659832	9.46	722	0.002	0.051	0.080	0.128	332.780399	46.098139	-1906.45	245.39
7	GUIDE	472655152	9.43	724	0.022	-0.036	0.088	0.143	332.504239	45.862991	-814.05	284.01

2.4 Star Slots

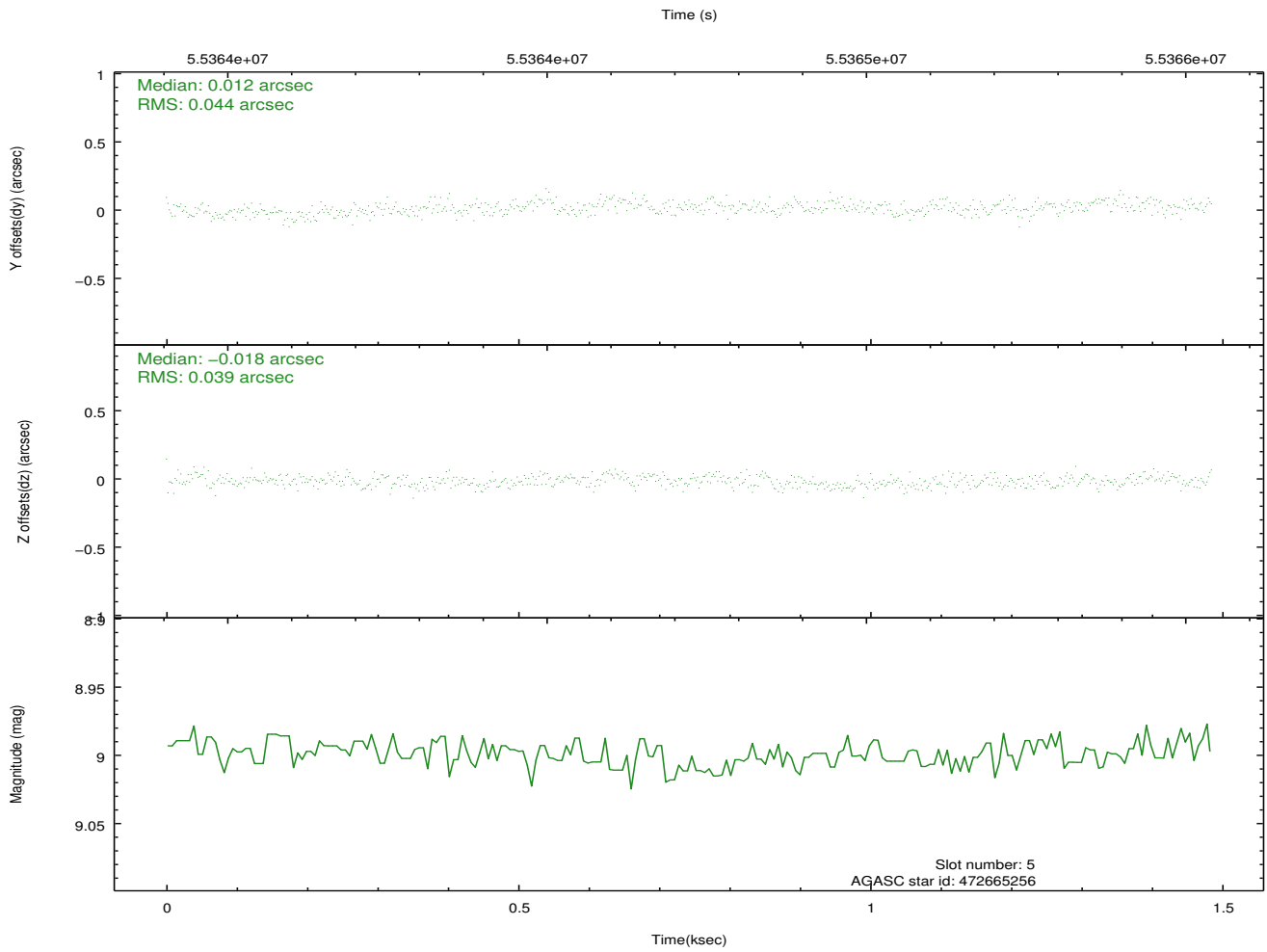
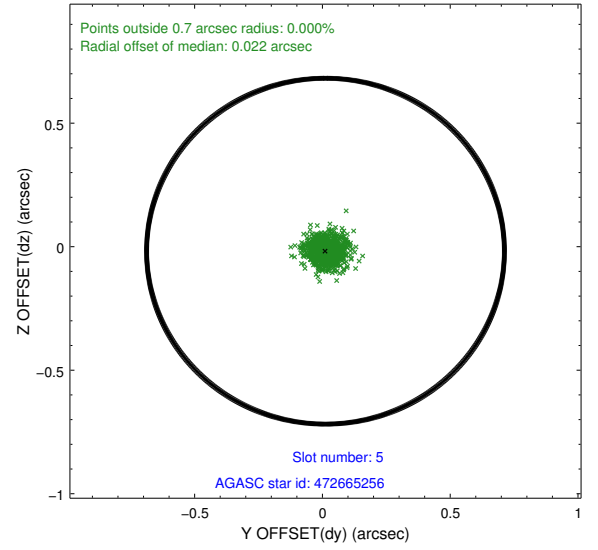
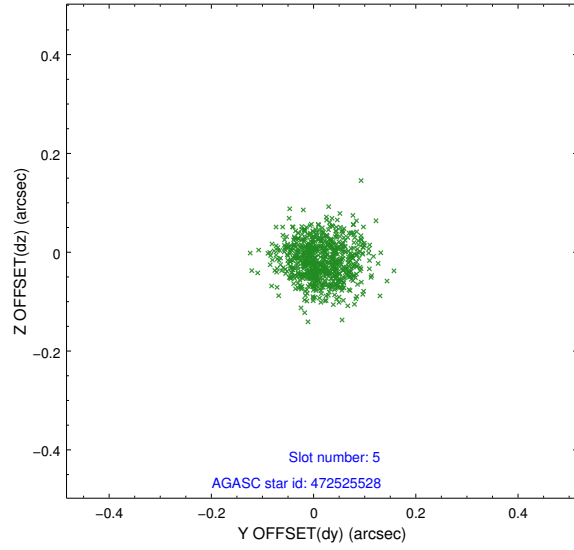
2.4.1 Slot 3



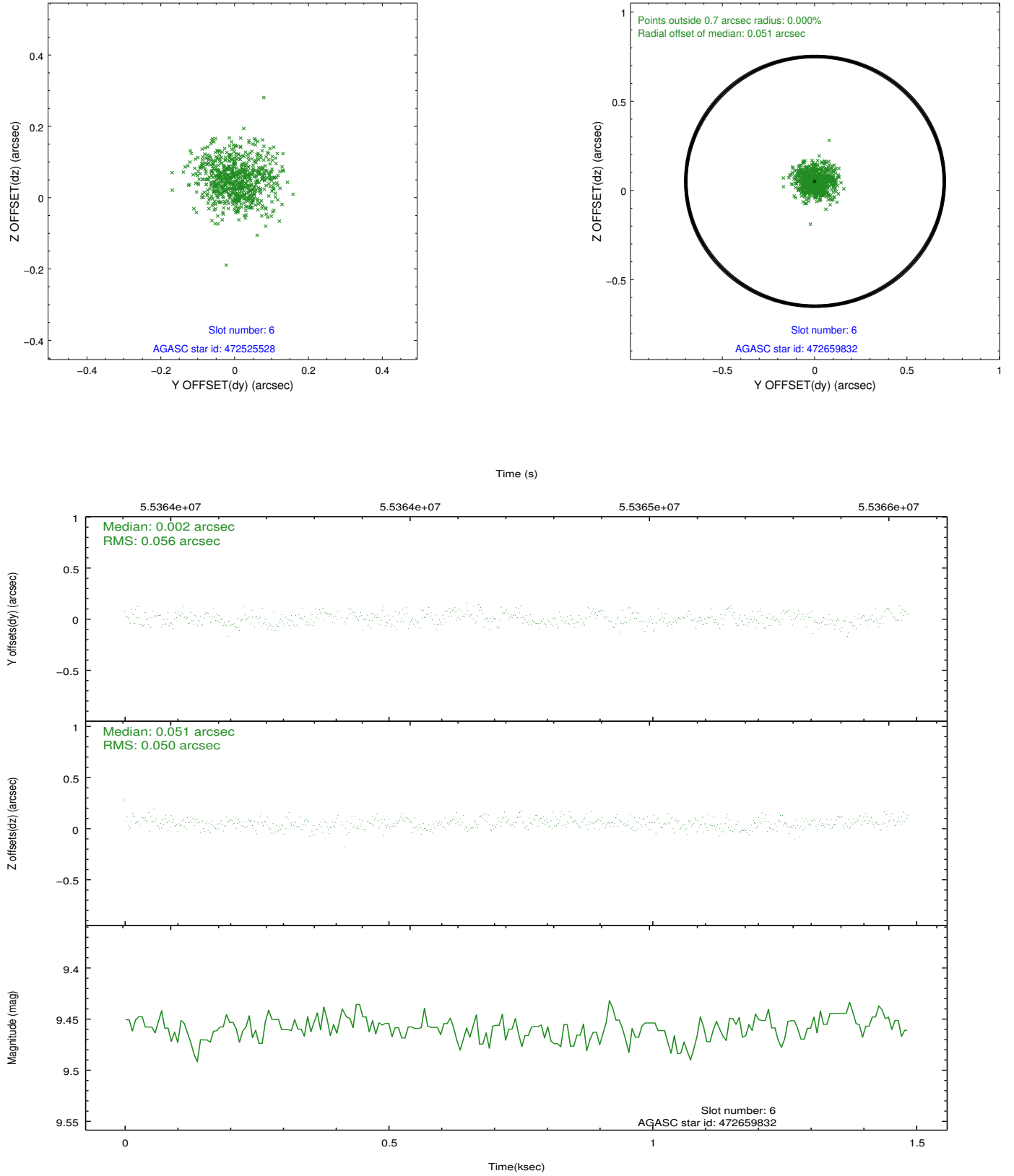
2.4.2 Slot 4



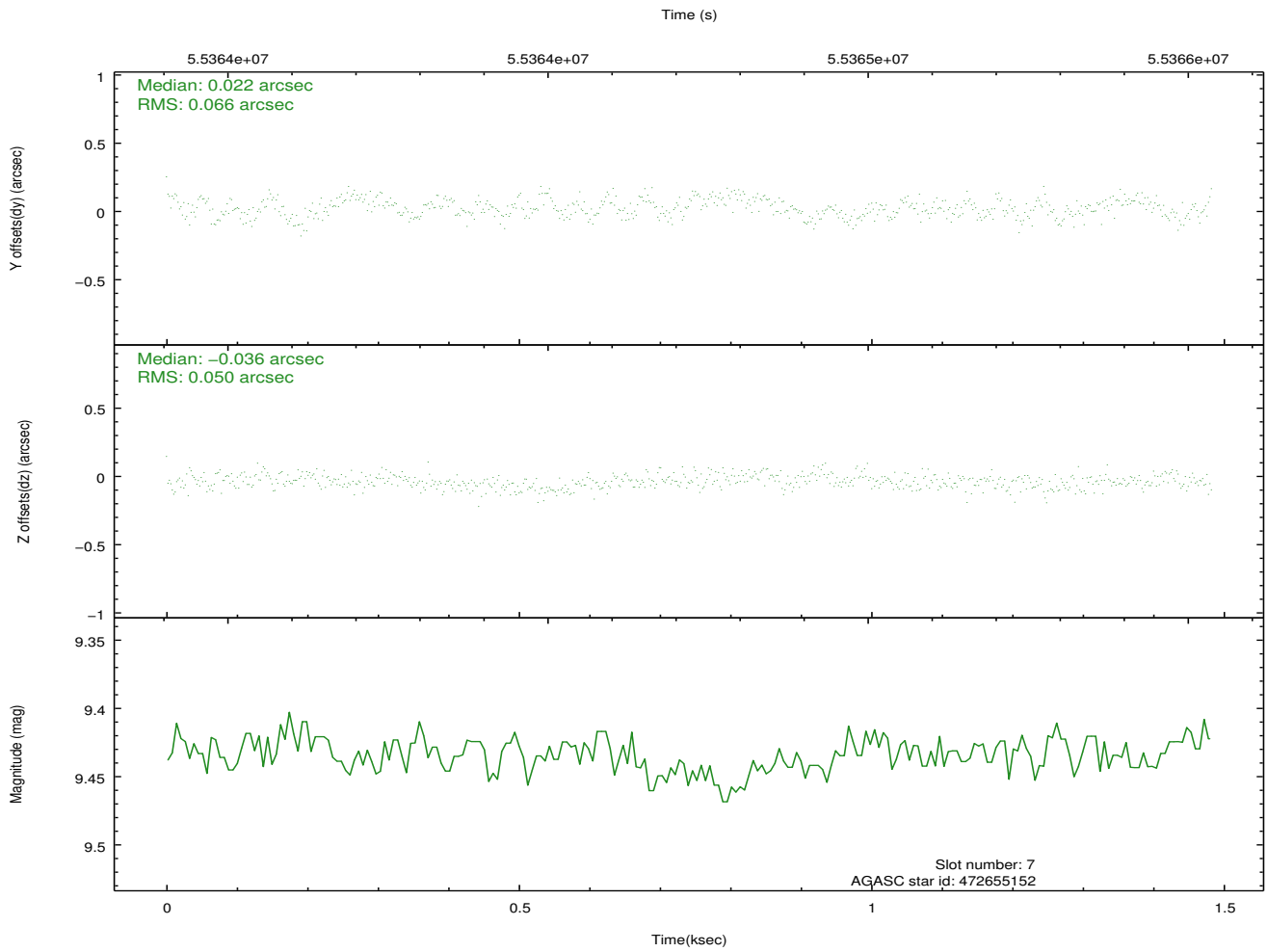
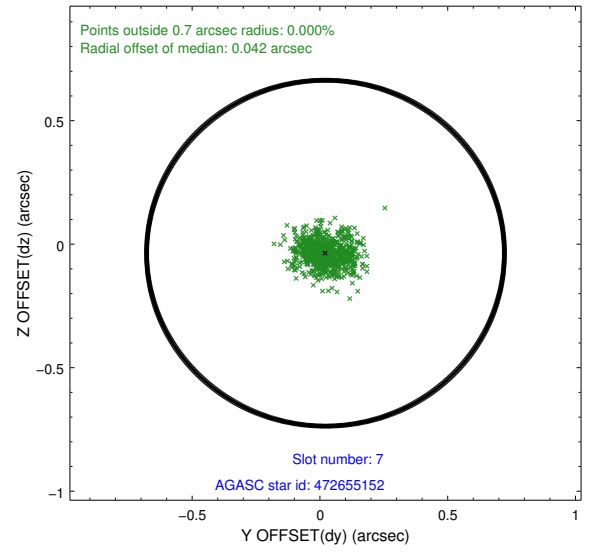
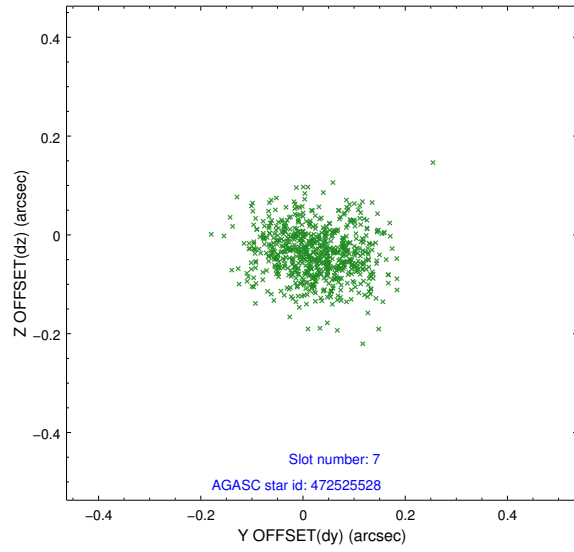
2.4.3 Slot 5



2.4.4 Slot 6

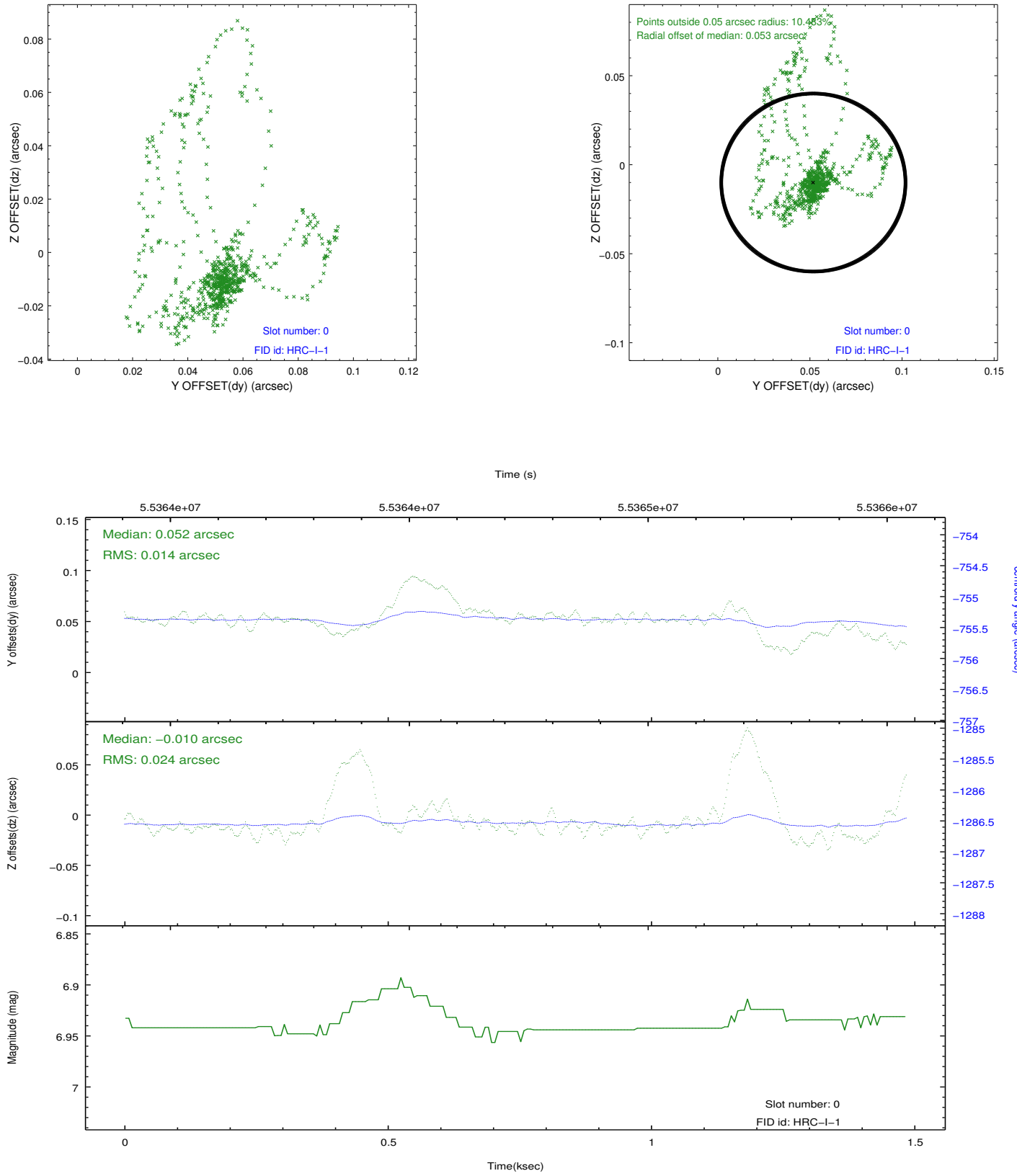


2.4.5 Slot 7

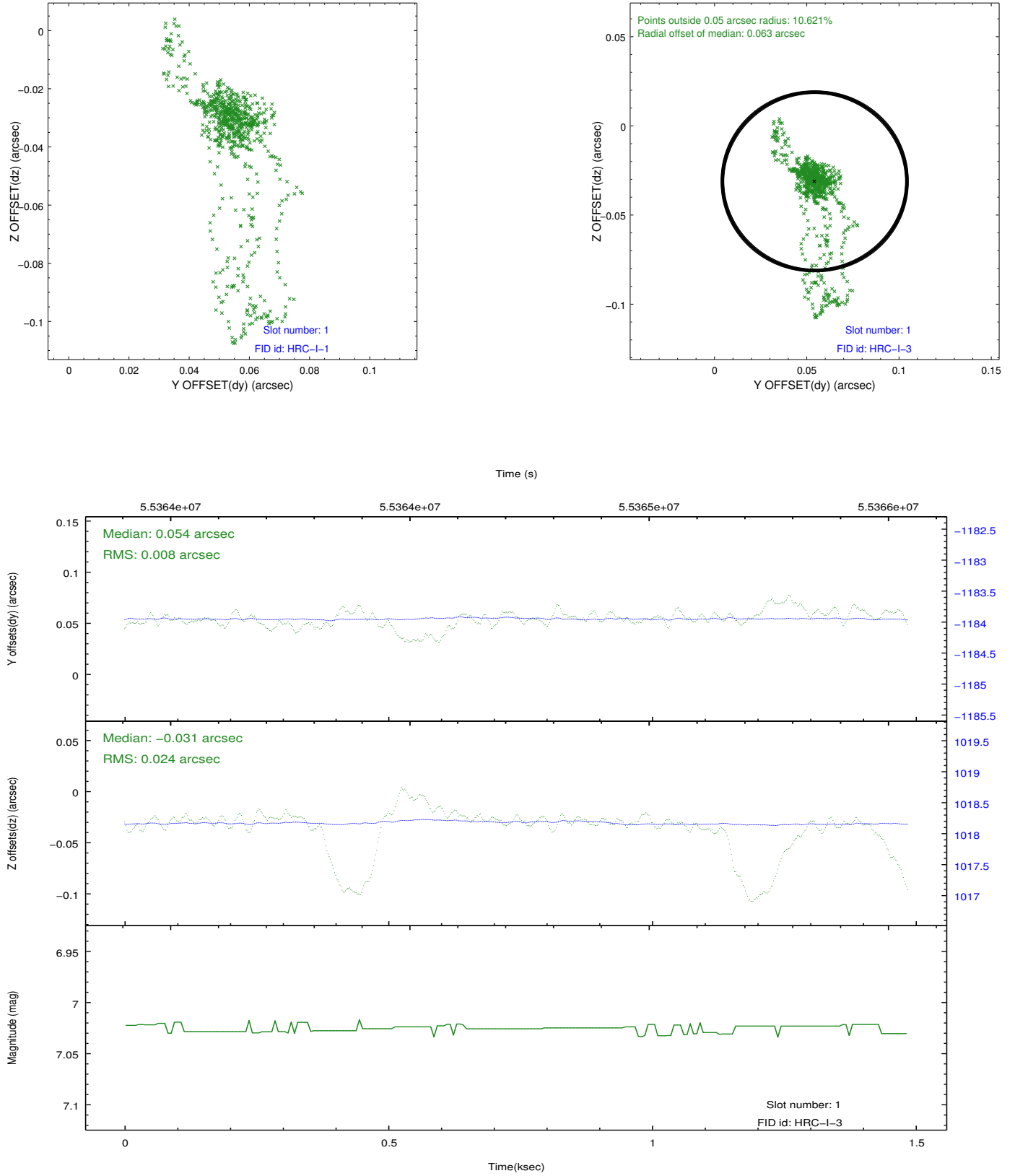


2.5 FID Slots

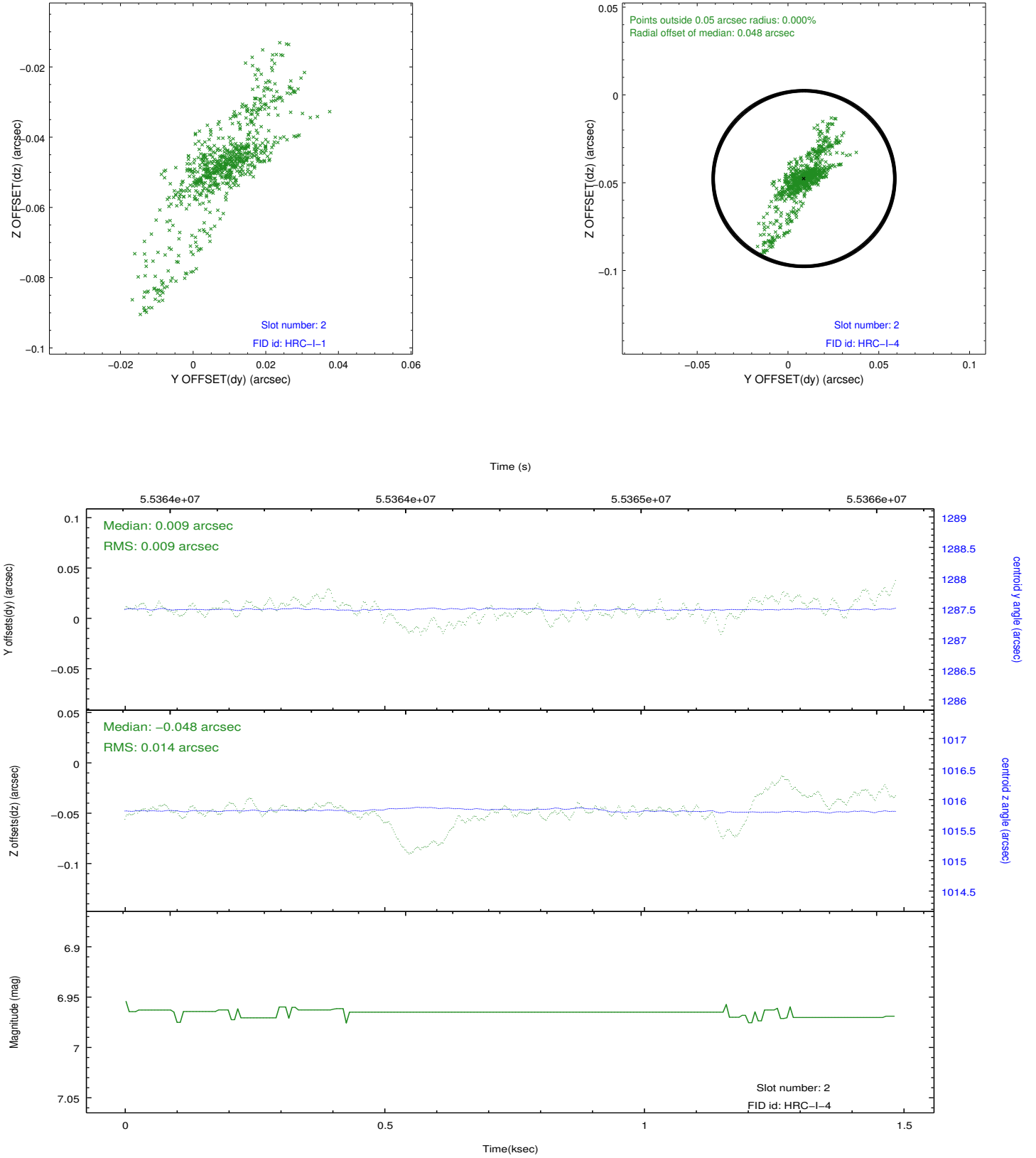
2.5.1 Slot 0



2.5.2 Slot 1



2.5.3 Slot 2



3 Point Sources

19.25 arcmin



A Summary

A.1 Status

V&V Scientist	Beth Sundheim
V&V Date (YYYY-MM-DD)	2010.09.29
V&V Edition	1
V&V Disposition and Status	OK
V&V Charge Time	0.75

A.2 Comments

AR LAC observation to study HRC-I spatial gain dependence on HV. Source is off-axis.

Charge time for this observation remains at previous value of 0.75 ksec, although with the current processing the charge time would have been 0.752 ksec.