

V&V Reference Report

L2 ASCDS Version : 8.2.1

Observation 1241 - L2 Version 3

Chandra X-Ray Center

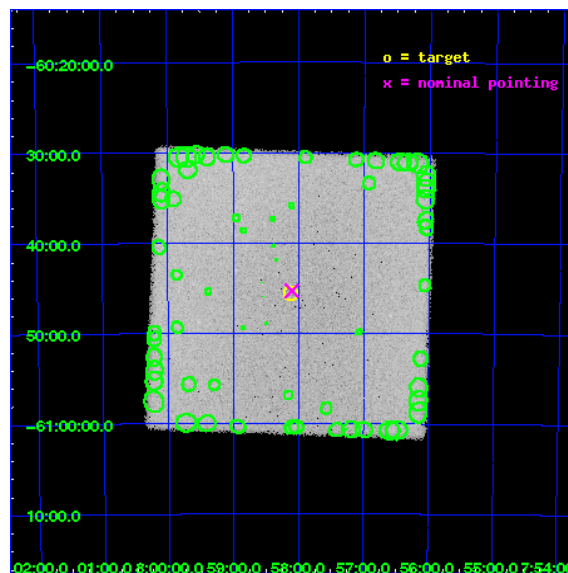
L2 Processing Date : Jan 12 2010

Contents

1	Front	2
2	OBI	3
2.1	OBI	3
2.1.1	Images	3
2.1.2	Parameters	4
2.1.3	Events	4
2.2	Compared Parameters	5
2.3	Aspect	6
2.4	Star Slots	9
2.4.1	Slot 3	9
2.4.2	Slot 4	10
2.4.3	Slot 5	11
2.4.4	Slot 6	12
2.4.5	Slot 7	13
2.5	FID Slots	14
2.5.1	Slot 0	14
2.5.2	Slot 2	15
3	Point Sources	16
A	Summary	17
A.1	Status	17
A.2	Comments	17

1 Front

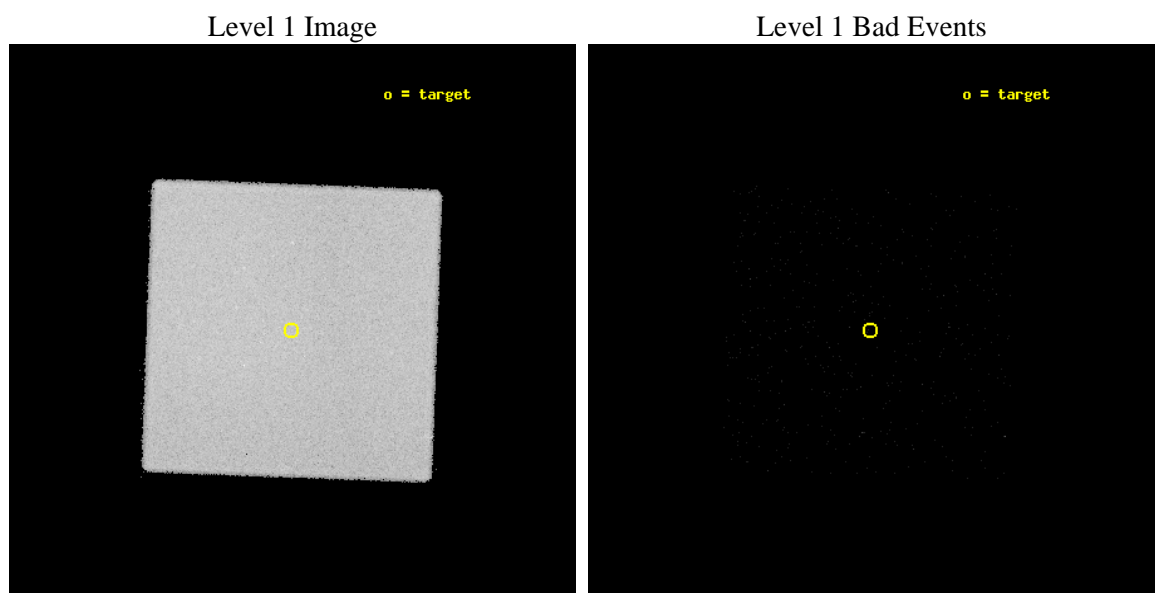
seq_num	280191	Sequence number
obs_id	1241	Observation id
title	CALIBRATION OBSERVATION NGC 2516 FOR BORESIGHTING AND PLATE SCALE	
observer	Dr. CXC Calibration	Principal investigator
object	NGC 2516	Source name
ra_targ	119.529583	Observer's specified target RA
dec_targ	-60.76	Observer's specified target Dec
ra_nom	119.52575431622	Nominal RA
dec_nom	-60.75537586424	Nominal Dec
roll_nom	137.12219369313	Nominal Roll
revision	3	Processing version of data
ontime	9723.1503491923	[s]
livetime	9641.6682982842	Ontime multiplied by DTCOR
l2events	371781	Number of level 2 events



2 OBI

2.1 OBI

2.1.1 Images



2.1.2 Parameters

obi_num	0	Obi number	sched_exp_time	10000.000000	Scheduled observation exposure time
ascdsver	8.2.1	Processing system revision	ontime	9723.1503491923	[s]
caldbver	4.1.5	 	ll events	652084	Number of level 1 events
date	2010-01-12T20:24:41	Date and time of file creation			
revision	3	Processing version of data			

2.1.3 Events

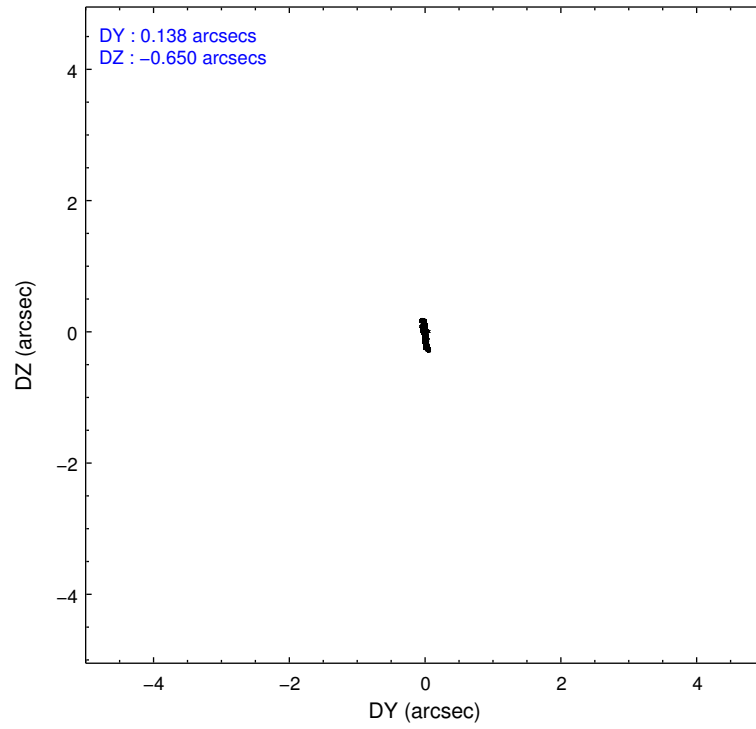
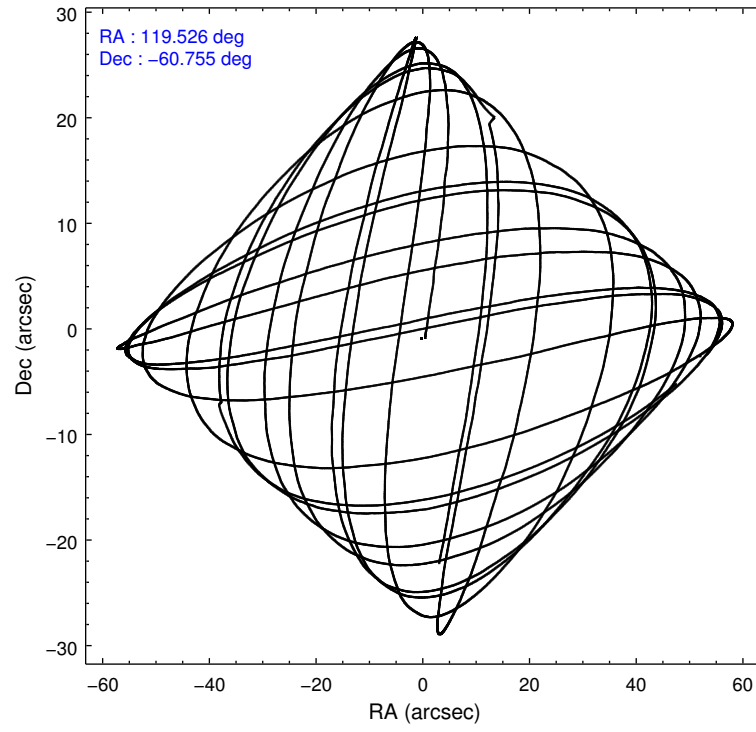
Level 1 Events

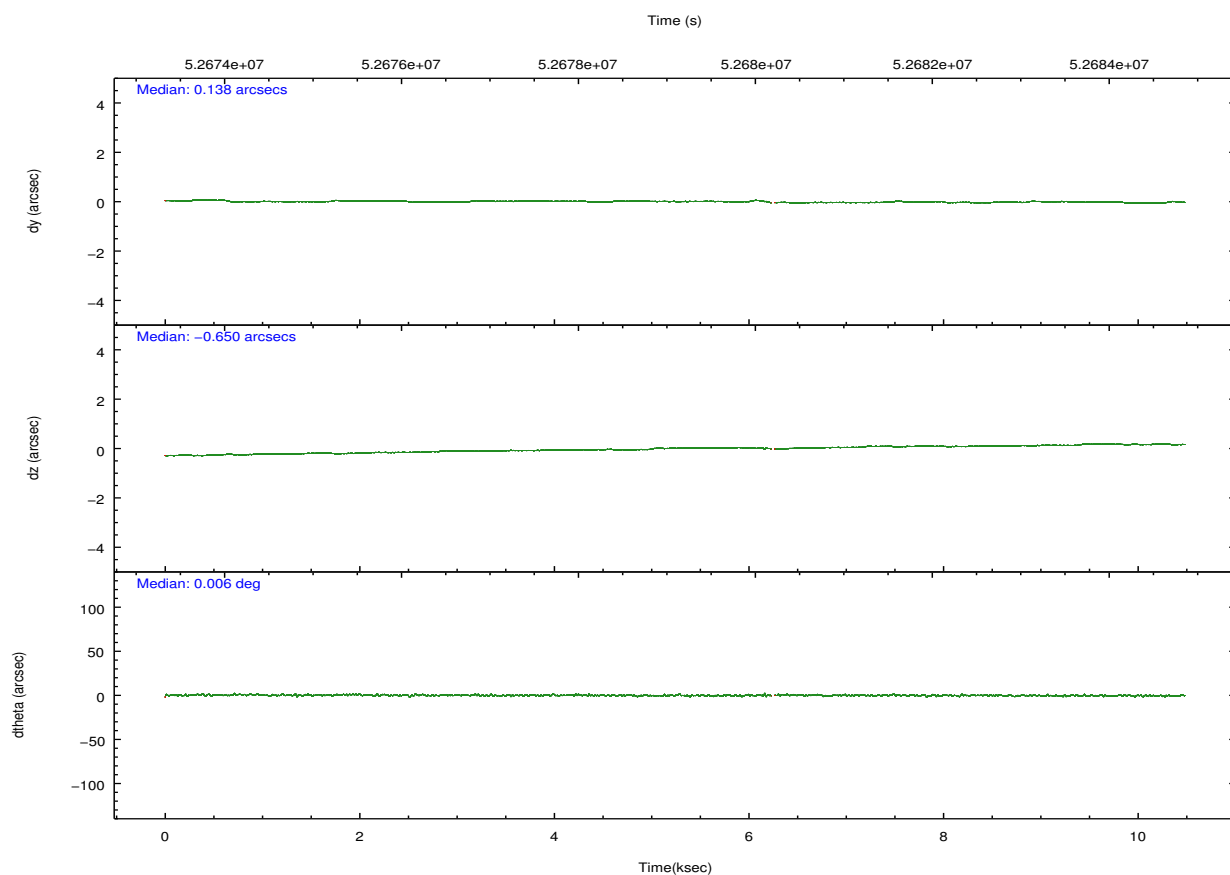
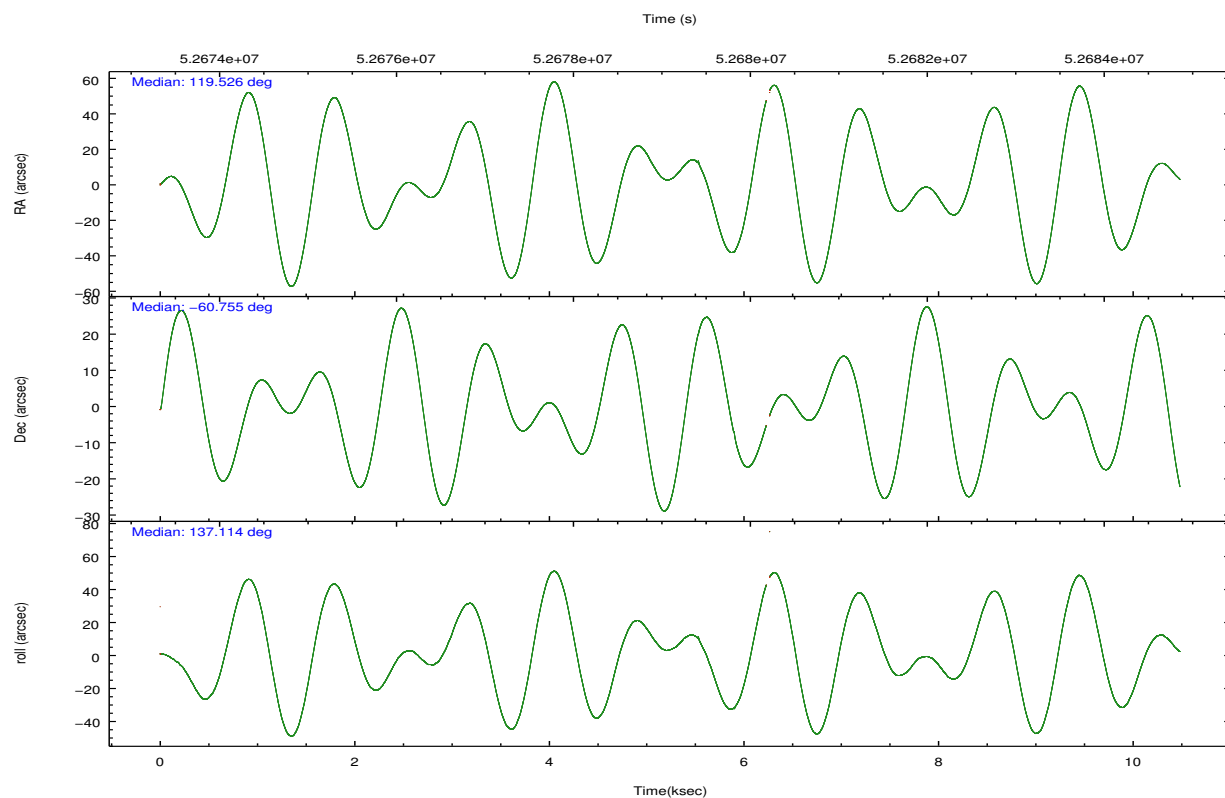
	segment 0
level 1 events	652084
rejected events	7037
rejected %	1%

2.2 Compared Parameters

Parameter	Planned	Actual	Parameter	Planned	Actual
Instrument	HRC	HRC	Obspar format version number	6	6
Detector	HRC-I	HRC-I	Obspar file type	PREDICTED	ACTUAL
Grating	NONE	NONE	Obspar update status	NONE	UPDATED
Data mode	OBSERVING	OBSERVING			
Observation mode	POINTING	POINTING			
Pointing RA	119.580424	119.5257543162247			
Pointing Dec	-60.761628	-60.75537586423959			
Pointing Roll	137.265386	137.12219369313			
SIM focus pos (mm)	-1.040293	-1.016036269358593			
SIM defocus (mm)	0	0.02425635130028114			
SIM translation stage pos (mm)	126.985494	126.9854943052878			
SIM translation stage offset (mm)	0	-5.413686238853188e-06			
Observation start time	52674334.184000	52673668.242445			
Observation start date	1999-09-02T15:44:30	1999-09-02T15:34:28			
Observation end time	52684334.184000	52684744.392843			
Observation end date	1999-09-02T18:31:10	1999-09-02T18:39:04			

2.3 Aspect



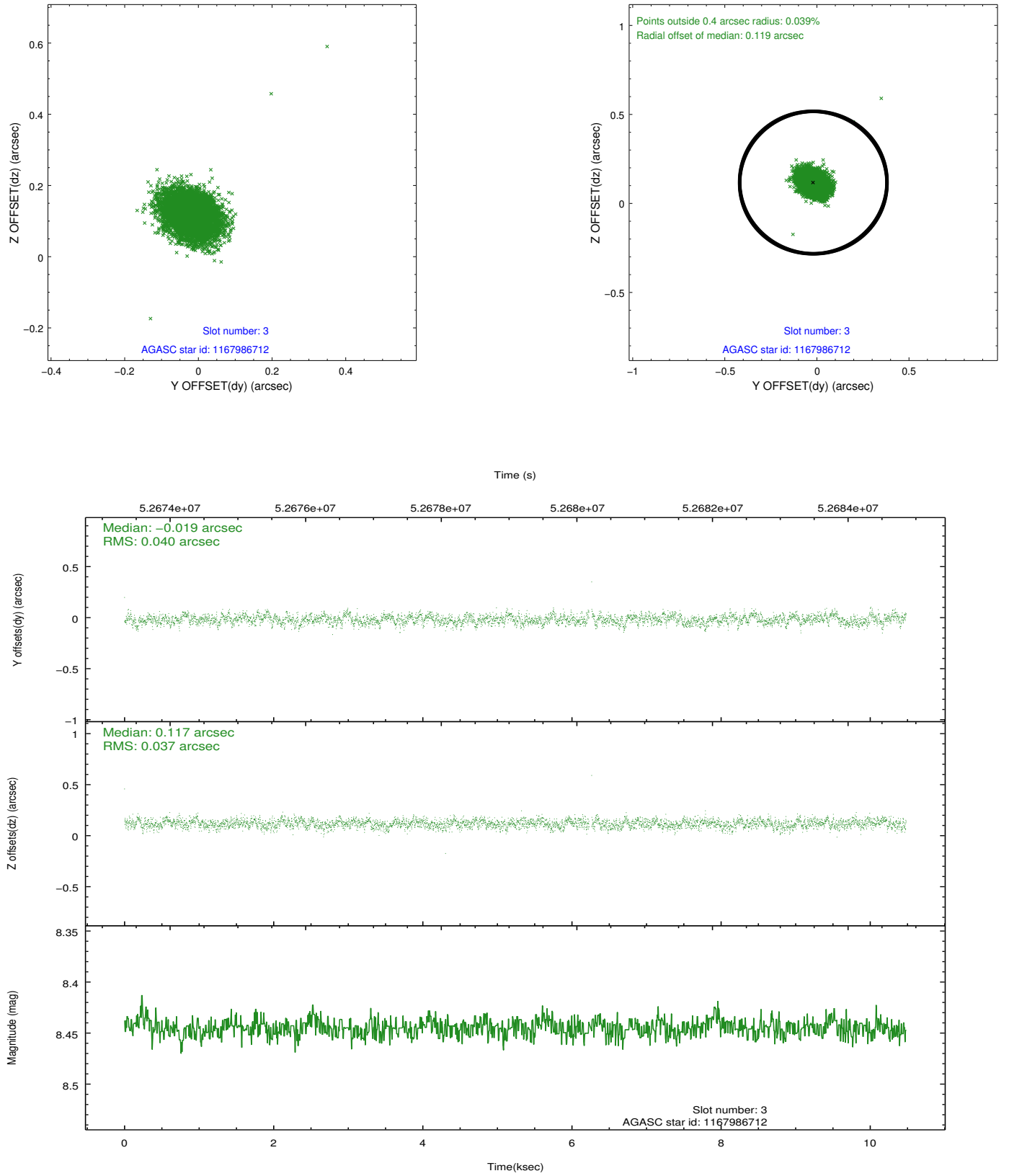


Slot Statistics

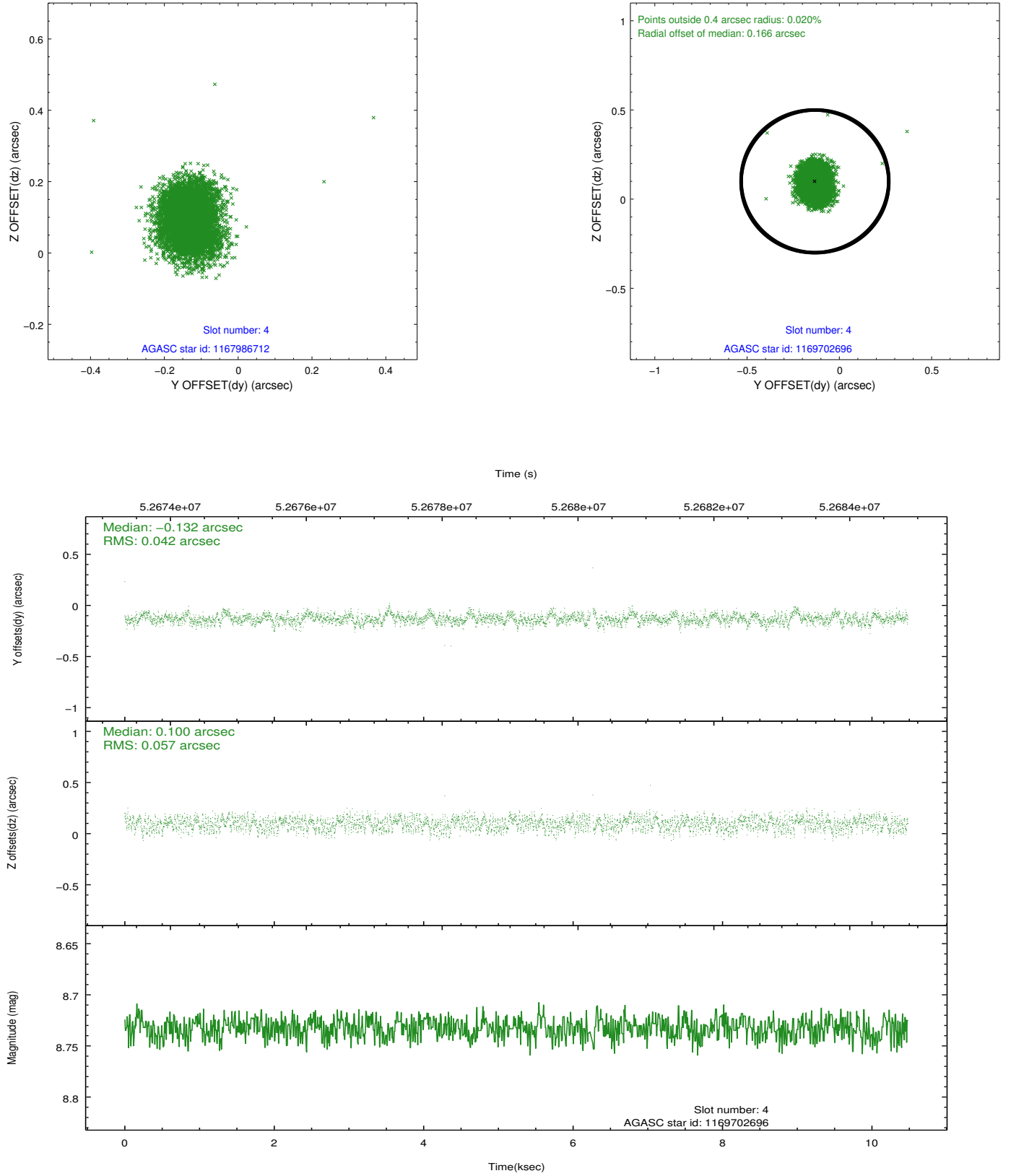
slot	status	id	mag	n_pts	med_dy	med_dz	dr1	dr2	ra	dec	mean_y	mean_z
0	FID	HRC-I-1	6.96	5097	0.015	-0.058	0.024	0.031	0.000000	0.000000	-755.46	-1287.09
1	UNUSED		0.00	0	0.000	0.000	0.000	0.000	0.000000	0.000000	0.00	0.00
2	FID	HRC-I-4	6.98	5094	0.059	-0.005	0.023	0.030	0.000000	0.000000	1287.12	1014.97
3	GUIDE	1167986712	8.44	5094	-0.019	0.117	0.057	0.092	119.099343	-60.382718	1551.97	-417.62
4	GUIDE	1169702696	8.73	5092	-0.132	0.100	0.076	0.119	120.944763	-60.544109	-1259.39	-2195.03
5	GUIDE	1167997272	9.29	5096	-0.036	-0.099	0.083	0.132	118.927163	-61.353075	-621.50	2333.37
6	GUIDE	1122633360	9.24	5094	0.131	-0.085	0.096	0.157	119.617986	-59.961517	1905.03	-2160.17
7	GUIDE	1168005096	9.60	5092	0.045	-0.033	0.109	0.173	119.552642	-61.434514	-1608.88	1811.92

2.4 Star Slots

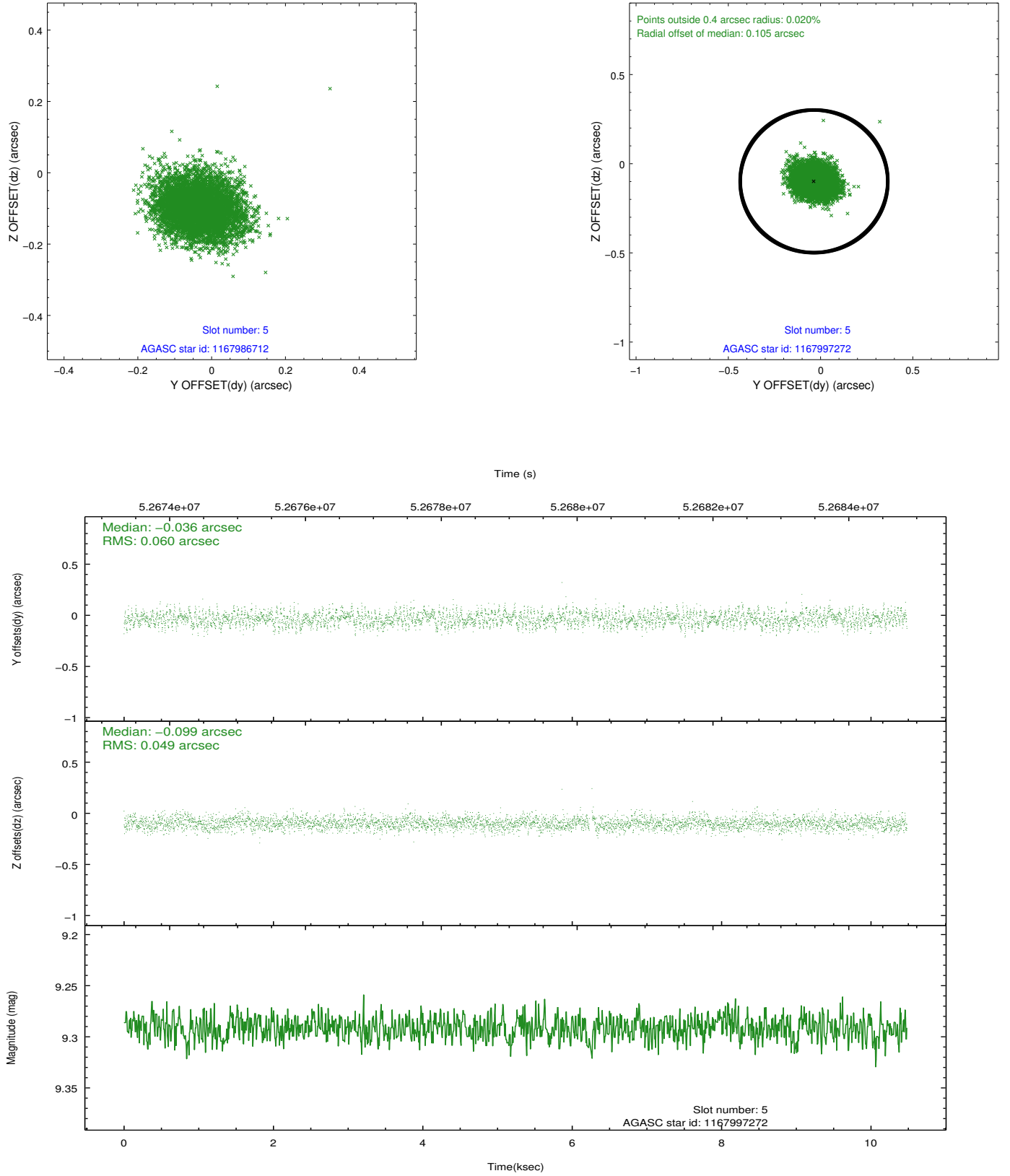
2.4.1 Slot 3



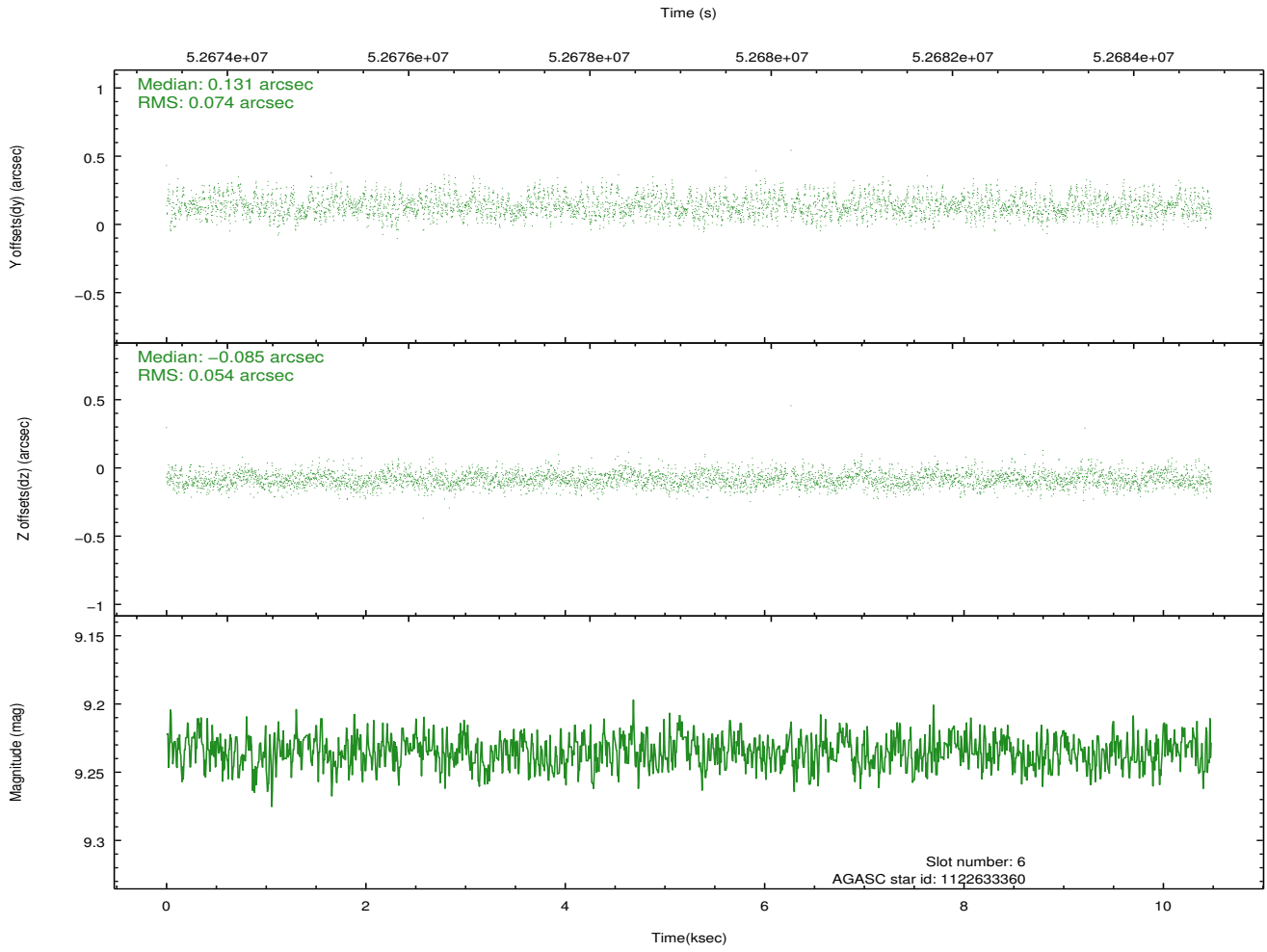
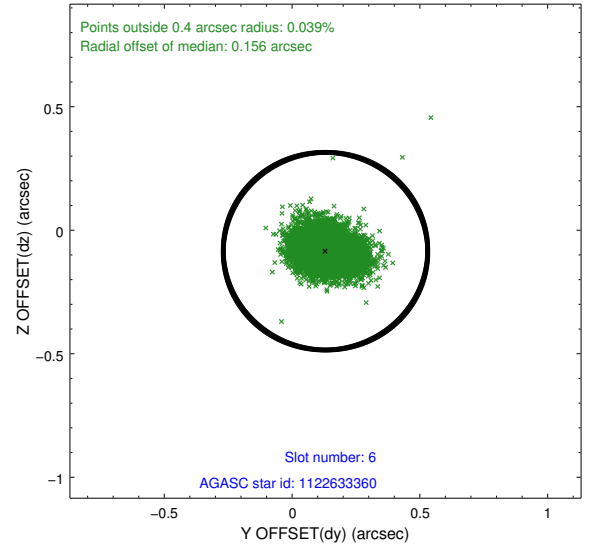
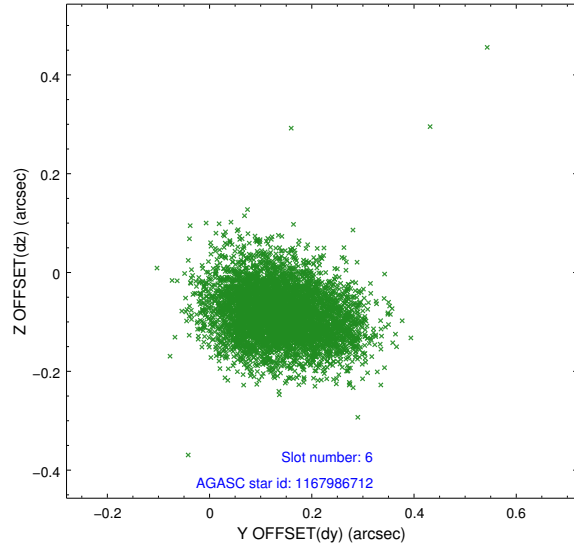
2.4.2 Slot 4



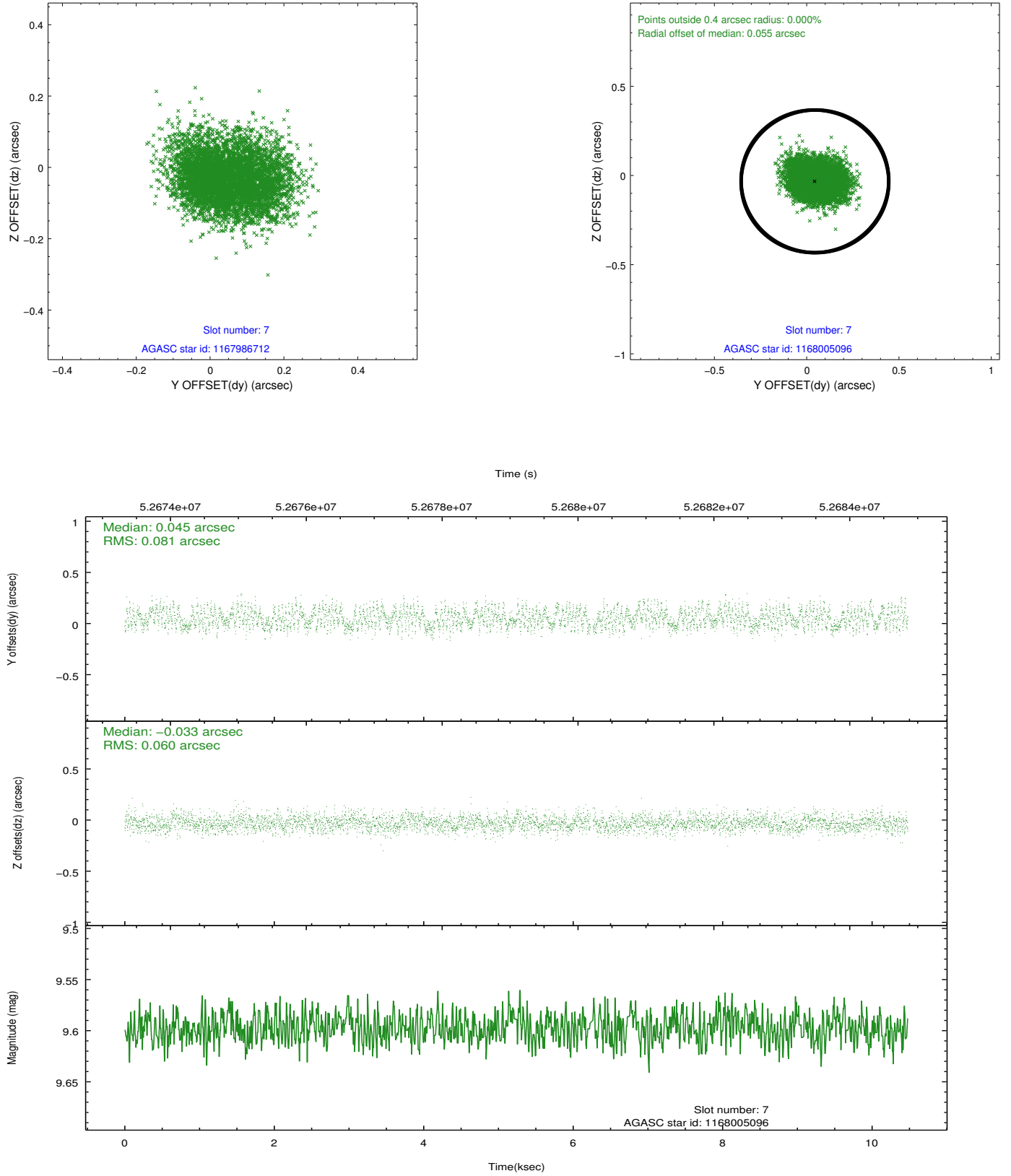
2.4.3 Slot 5



2.4.4 Slot 6

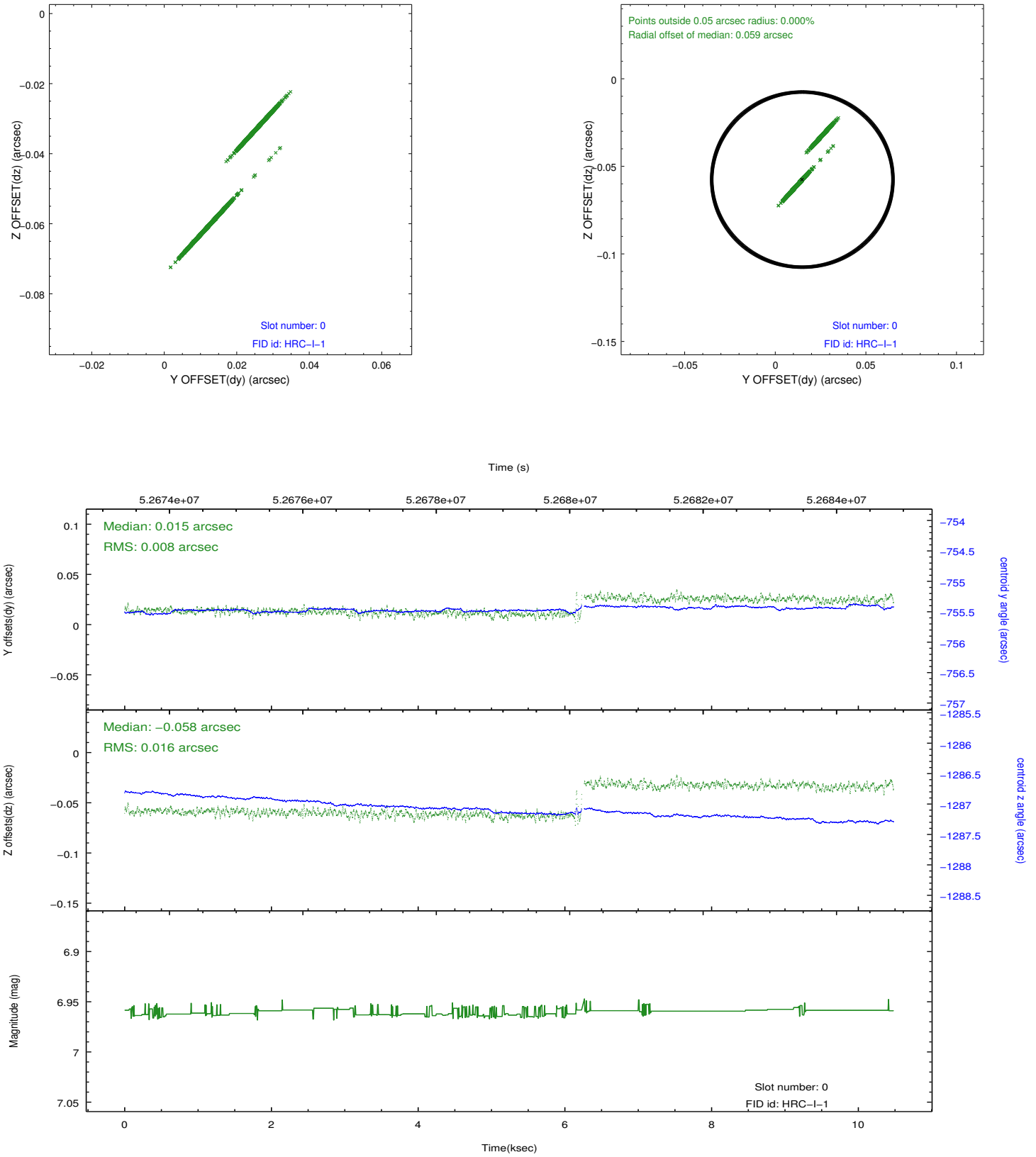


2.4.5 Slot 7

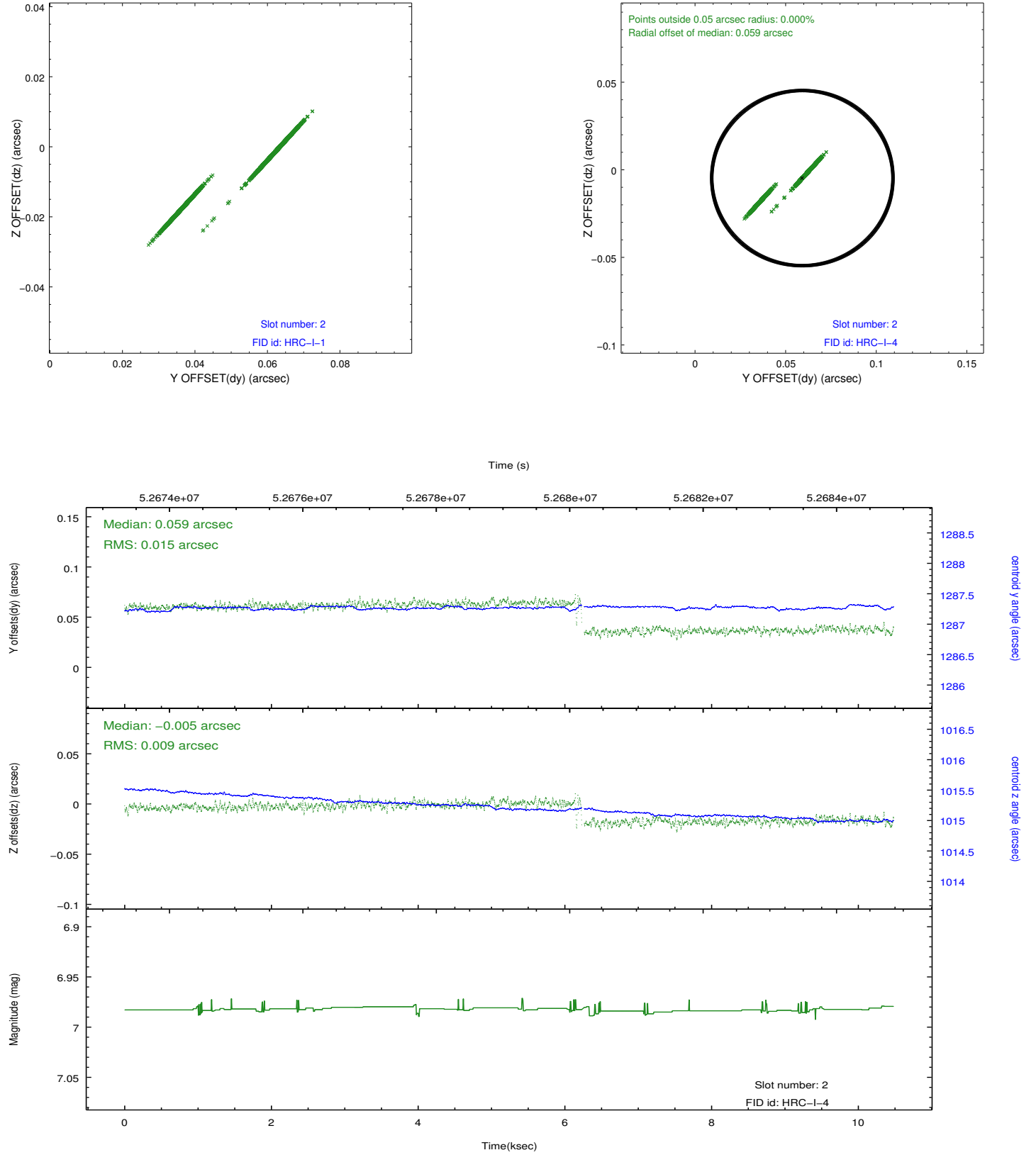


2.5 FID Slots

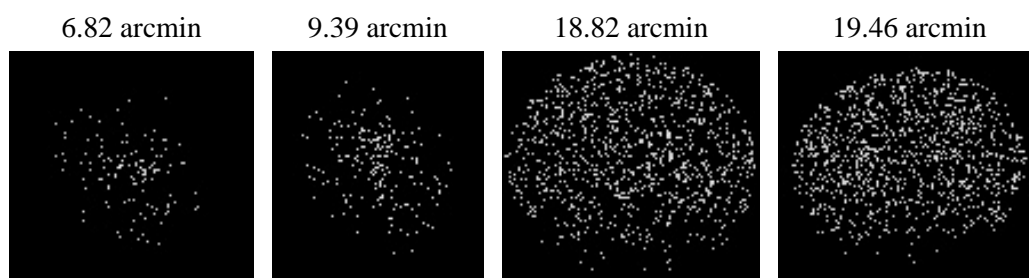
2.5.1 Slot 0



2.5.2 Slot 2



3 Point Sources



A Summary

A.1 Status

V&V Scientist	Joy Nichols
V&V Date (YYYY-MM-DD)	2010.01.22
V&V Edition	1
V&V Disposition and Status	OK
V&V Charge Time	9.703

A.2 Comments

HRC boresight and plate scale series. Fid light in slot 1 was blocked by the HRC shutter. During this observation the HRC shutters were completely retracted

to allow the acquisition of all 3 fid lights in future observations.

There is

a slight discontinuity in the fid light tracking during this observation,

caused by this activity.

Charge time for this observation remains at previous value of 9.703 ksec,

although with the current processing the charge time would have been 9.723 ksec.

==