

# V&V Reference Report

## L2 ASCDS Version : 8.2.1

Observation 1153 - L2 Version 3

Chandra X-Ray Center

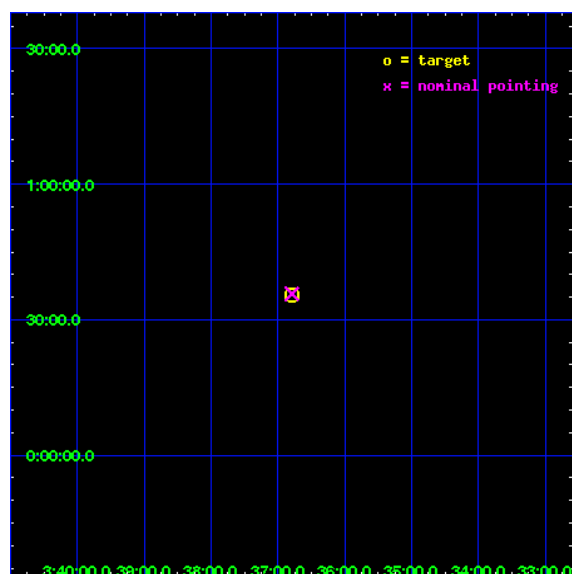
L2 Processing Date : Jan 12 2010

## Contents

<b>1</b>	<b>Front</b>	<b>2</b>
<b>2</b>	<b>OBI</b>	<b>3</b>
2.1	OBI . . . . .	3
2.1.1	Images . . . . .	3
2.1.2	Parameters . . . . .	4
2.1.3	Events . . . . .	4
2.2	Compared Parameters . . . . .	5
2.3	Aspect . . . . .	6
2.4	Star Slots . . . . .	9
2.4.1	Slot 3 . . . . .	9
2.4.2	Slot 4 . . . . .	10
2.4.3	Slot 5 . . . . .	11
2.4.4	Slot 6 . . . . .	12
2.4.5	Slot 7 . . . . .	13
2.5	FID Slots . . . . .	14
<b>3</b>	<b>Point Sources</b>	<b>15</b>
<b>A</b>	<b>Summary</b>	<b>16</b>
A.1	Status . . . . .	16
A.2	Comments . . . . .	16

# 1 Front

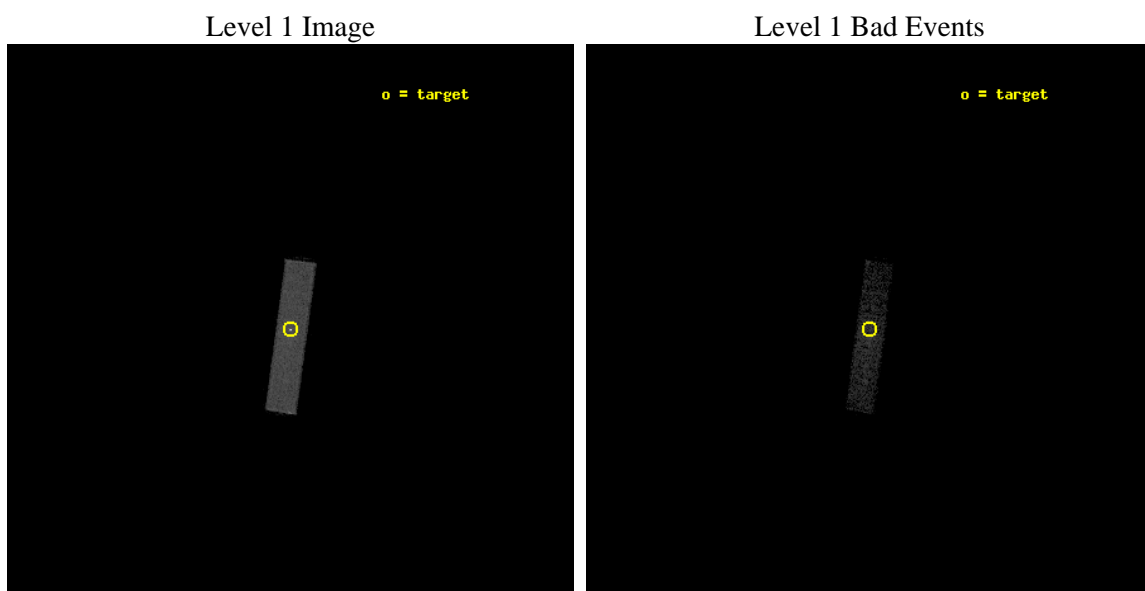
seq_num	280103	Sequence number
obs_id	1153	Observation id
title	&#160	Proposal title
observer	Dr. CXC Calibration	Principal investigator
object	HR1099	Source name
ra_targ	54.197083	Observer's specified target RA
dec_targ	0.589972	Observer's specified target Dec
ra_nom	54.197424101203	Nominal RA
dec_nom	0.59558518029946	Nominal Dec
roll_nom	97.636161227964	Nominal Roll
revision	3	Processing version of data
ontime	0.0	[s]
livetime	0.0	Ontime multiplied by DTCOR
l2events	0	Number of level 2 events



## 2 OBI

### 2.1 OBI

#### 2.1.1 Images



2.1.2 Parameters

obi_num	0	Obi number	sched_exp_time	1000.000000	Scheduled observation exposure time
ascdsver	8.2.1	Processing system revision	ontime	0.0	[s]
caldbver	4.1.5	&#160	l1events	54464	Number of level 1 events
date	2010-01-13T03:15:31	Date and time of file creation			
revision	3	Processing version of data			

2.1.3 Events

Level 1 Events

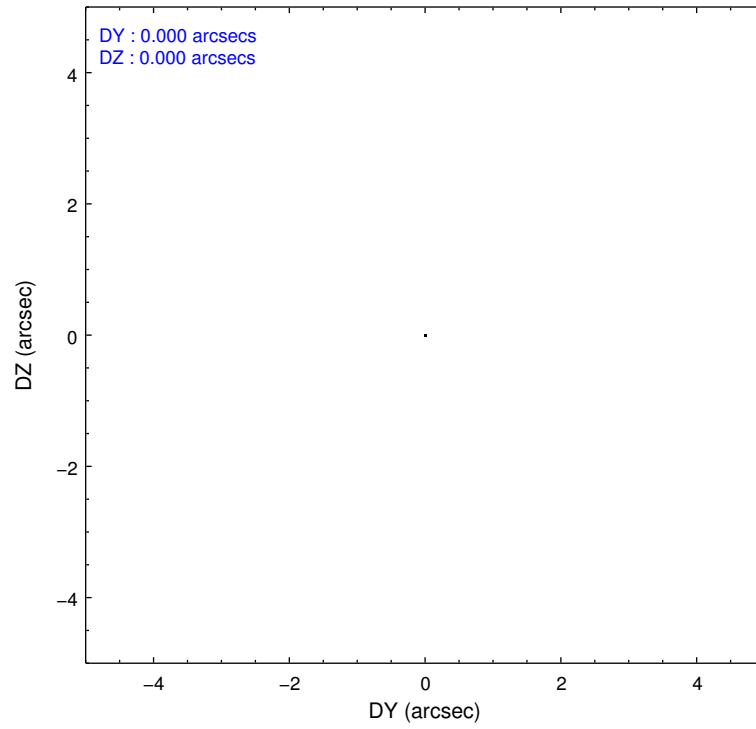
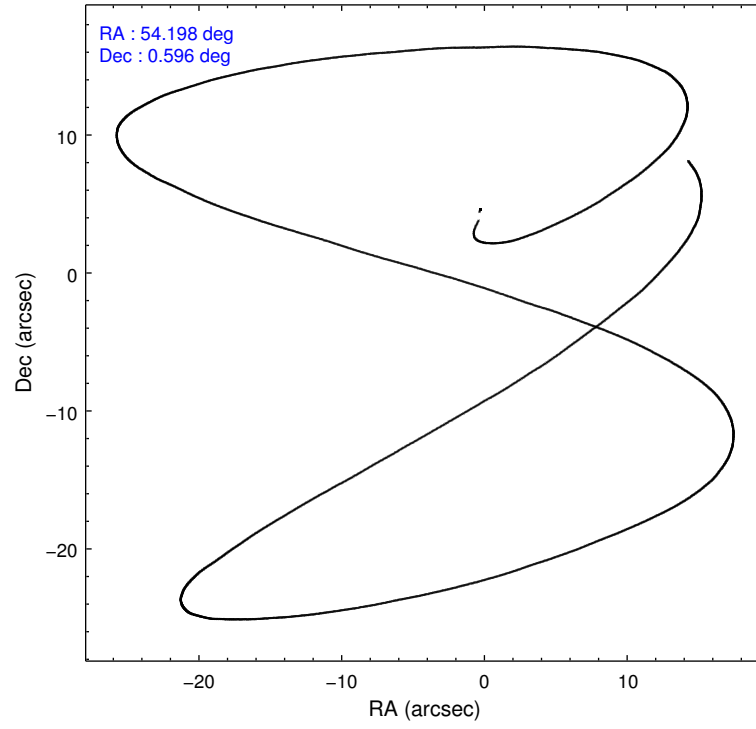
	segment 1	segment 2	segment 3
level 1 events	0	54464	0
rejected events	0	10130	0
rejected %	0%	18%	0%

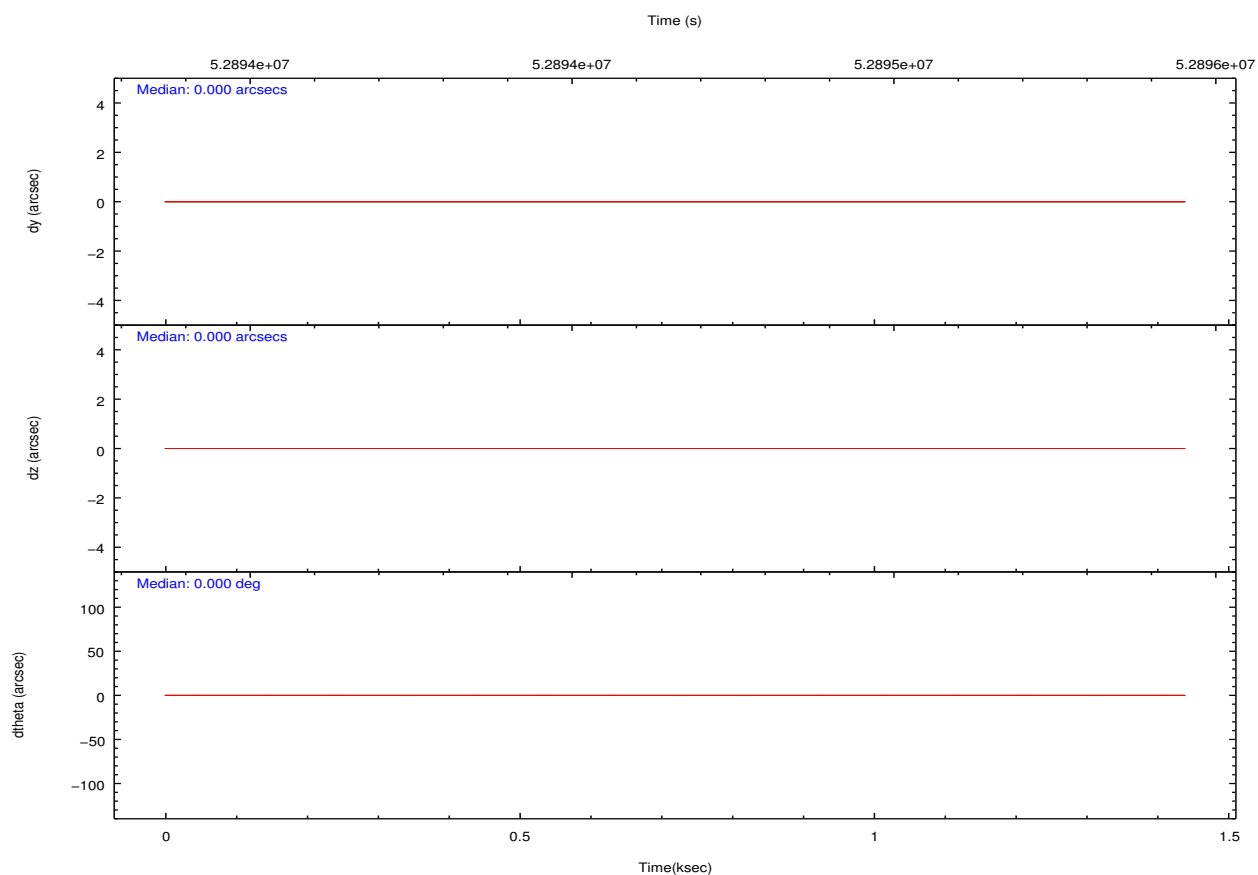
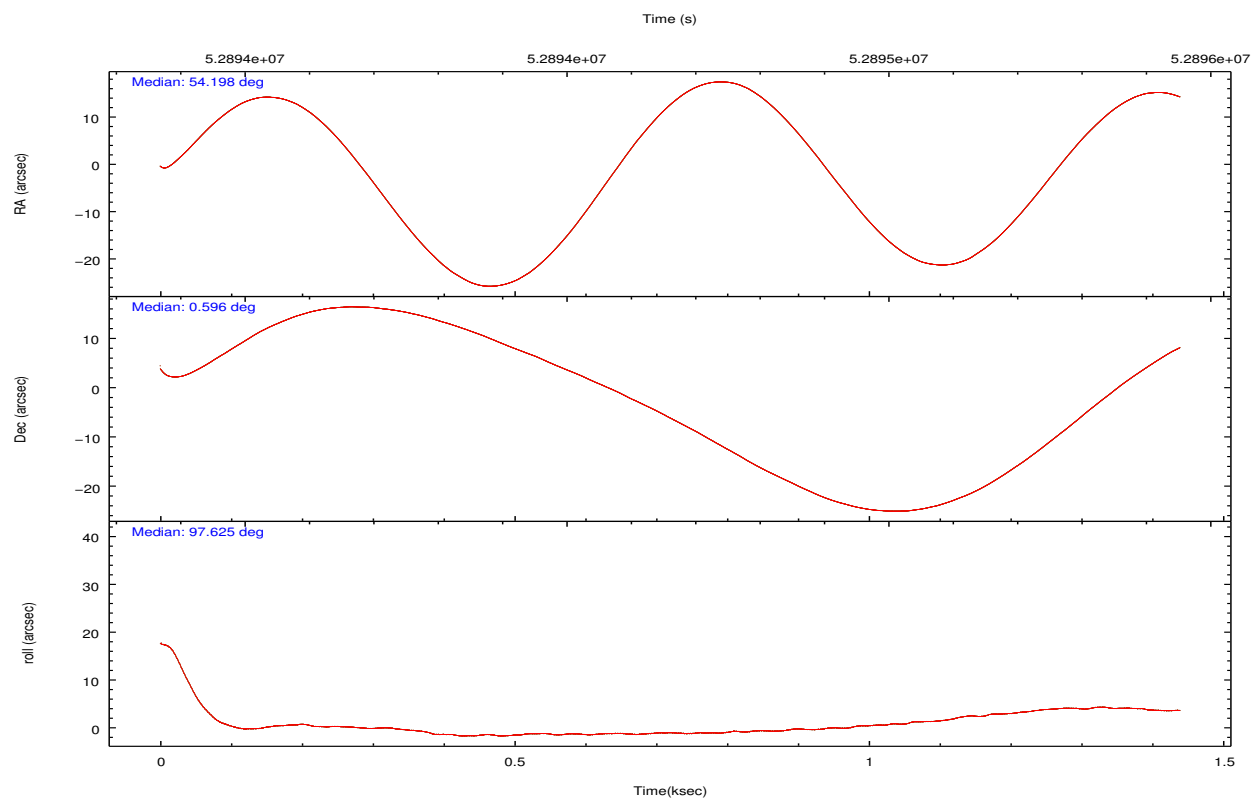
## 2.2 Compared Parameters

Parameter	Planned	Actual
Instrument	HRC	HRC
Detector	HRC-S	HRC-S
Grating	NONE	NONE
Data mode	OBSERVING	OBSERVING
Observation mode	POINTING	POINTING
Pointing RA	54.215158	54.19742410120305
Pointing Dec	0.572869	0.5955851802994564
Pointing Roll	97.568518	97.63616122796356
SIM focus pos (mm)	-1.429586	-1.370509375638239
SIM defocus (mm)	0.1037507710433287	0.1628272637660579
SIM translation stage pos (mm)	241.675976	250.466033080201
SIM translation stage offset (mm)	8.779999999999999	-0.01005468664627074
Observation start time	52894379.184000	52893005.437819
Observation start date	1999-09-05T04:51:55	1999-09-05T04:30:05
Observation end time	52895379.184000	52896266.475436
Observation end date	1999-09-05T05:08:35	1999-09-05T05:24:26

Parameter	Planned	Actual
Obspar format version number	6	6
Obspar file type	PREDICTED	ACTUAL
Obspar update status	NONE	UPDATED

## 2.3 Aspect





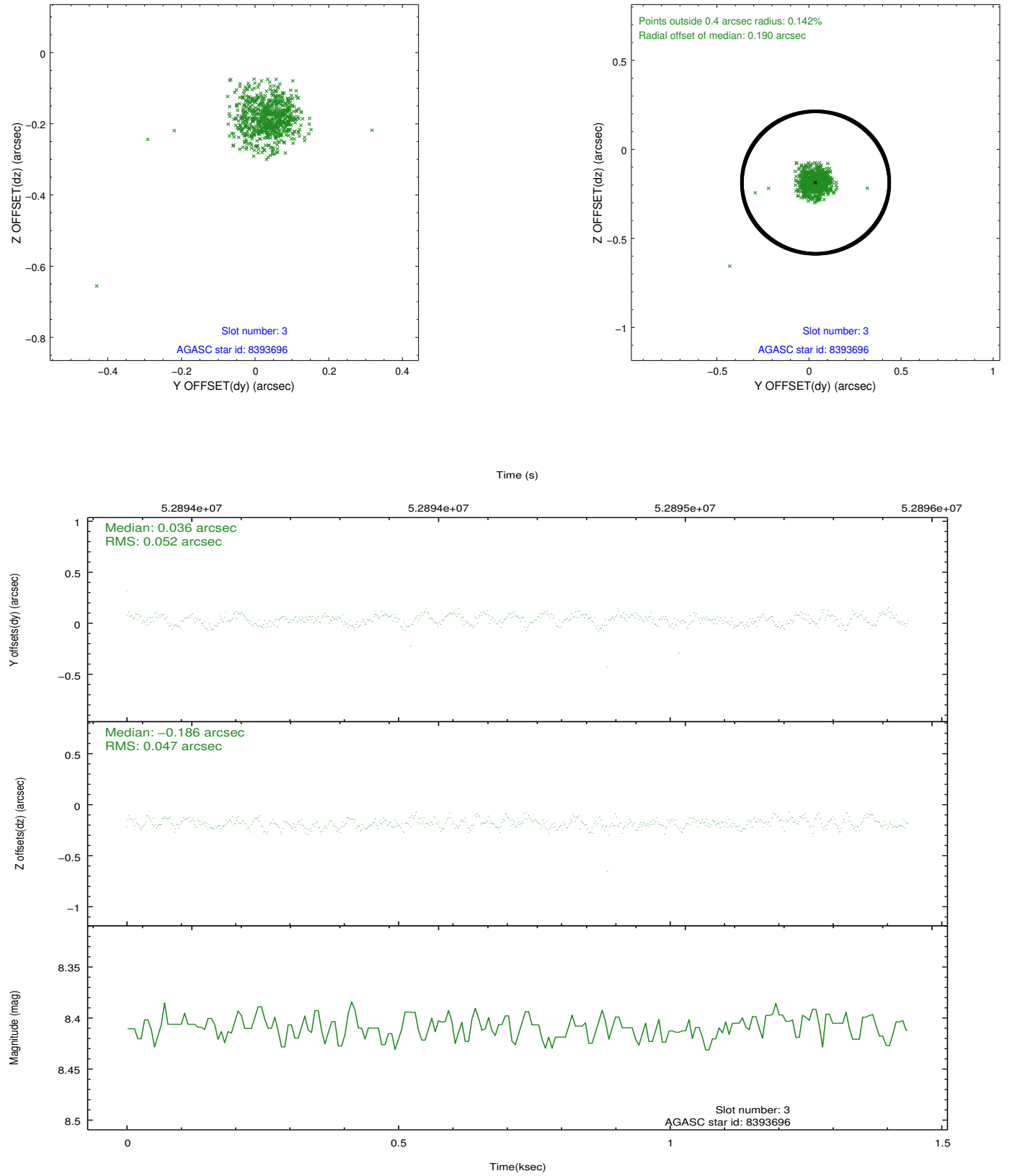
Slot Statistics

slot	status	id	mag	n_pts	med_dy	med_dz	drl	dr2	ra	dec	mean_y	mean_z
0	UNUSED		0.00	0	0.000	0.000	0.000	0.000	0.000000	0.000000	0.00	0.00
1	UNUSED		0.00	0	0.000	0.000	0.000	0.000	0.000000	0.000000	0.00	0.00
2	UNUSED		0.00	0	0.000	0.000	0.000	0.000	0.000000	0.000000	0.00	0.00
3	GUIDE	8393696	8.41	703	0.036	-0.186	0.069	0.107	53.645666	0.680479	653.66	1982.93
4	GUIDE	8398800	8.69	703	0.045	0.087	0.061	0.099	54.242352	0.922024	1233.98	-257.60
5	GUIDE	8390744	9.03	702	-0.057	-0.140	0.069	0.114	53.677290	0.926294	1517.62	1753.33
6	GUIDE	8395104	8.66	703	-0.030	0.195	0.068	0.113	54.744893	0.796520	549.46	-1991.65
7	GUIDE	8397624	9.54	702	0.014	0.052	0.105	0.175	54.812881	1.297049	2302.38	-2476.59

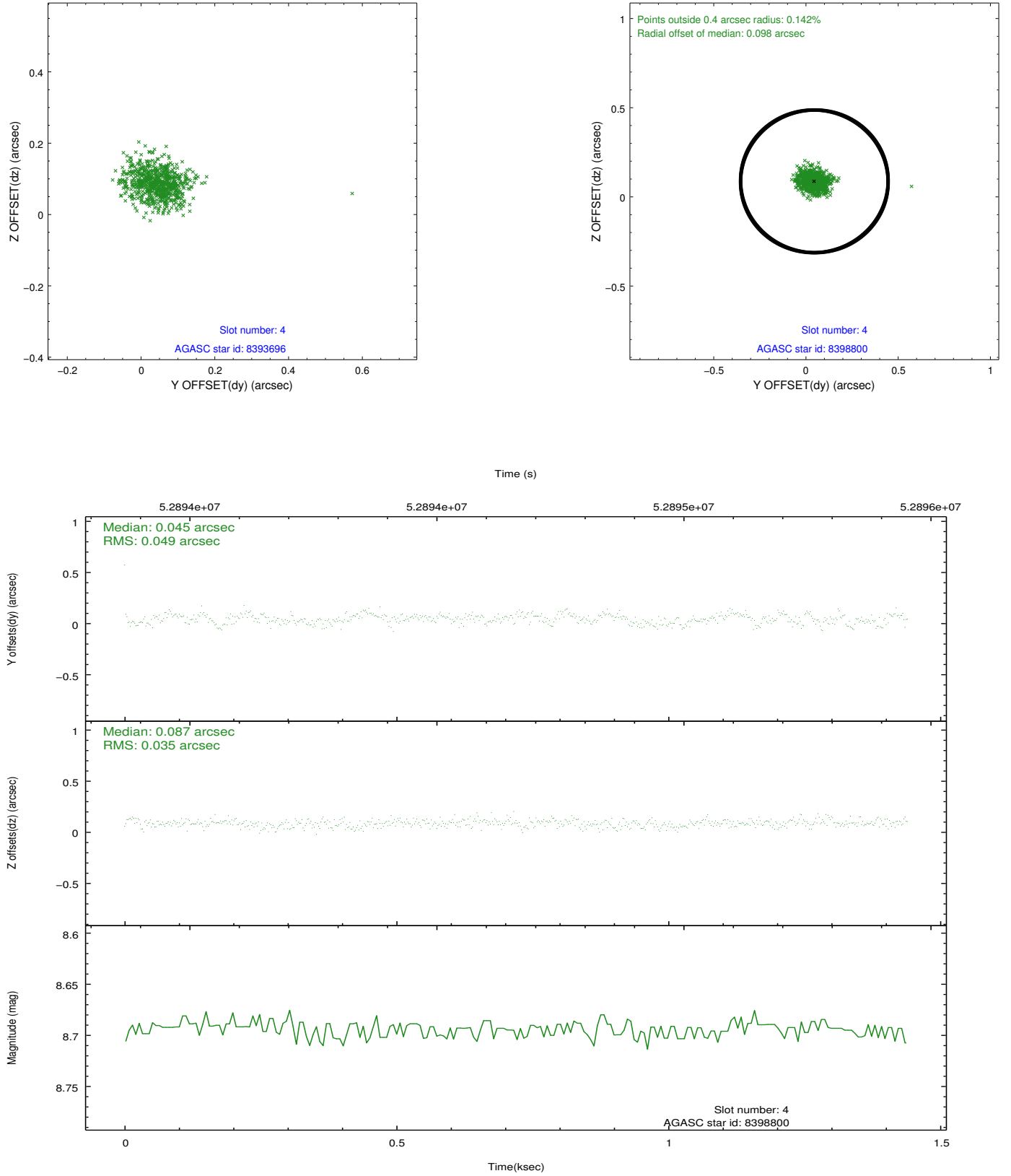


## 2.4 Star Slots

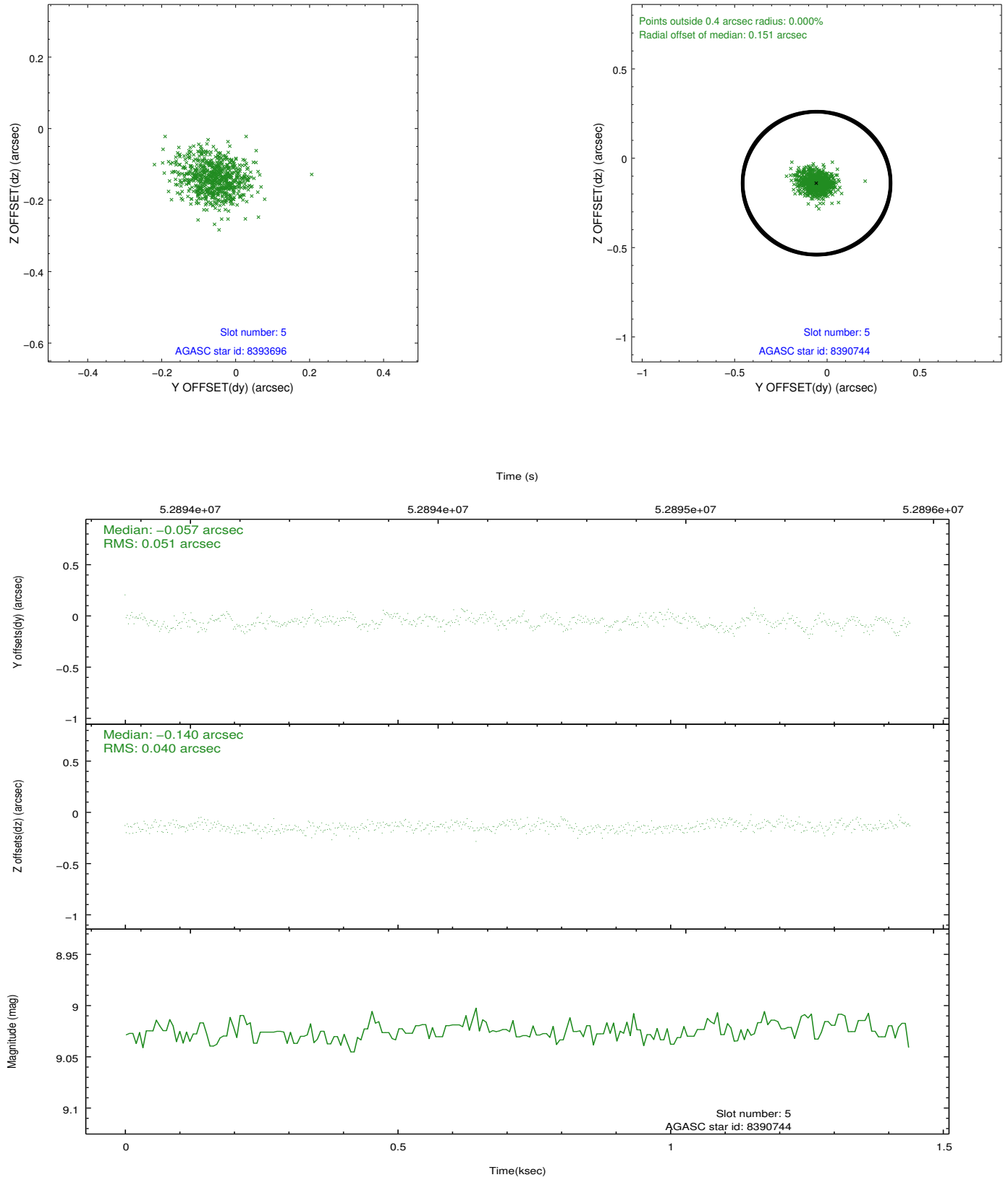
### 2.4.1 Slot 3



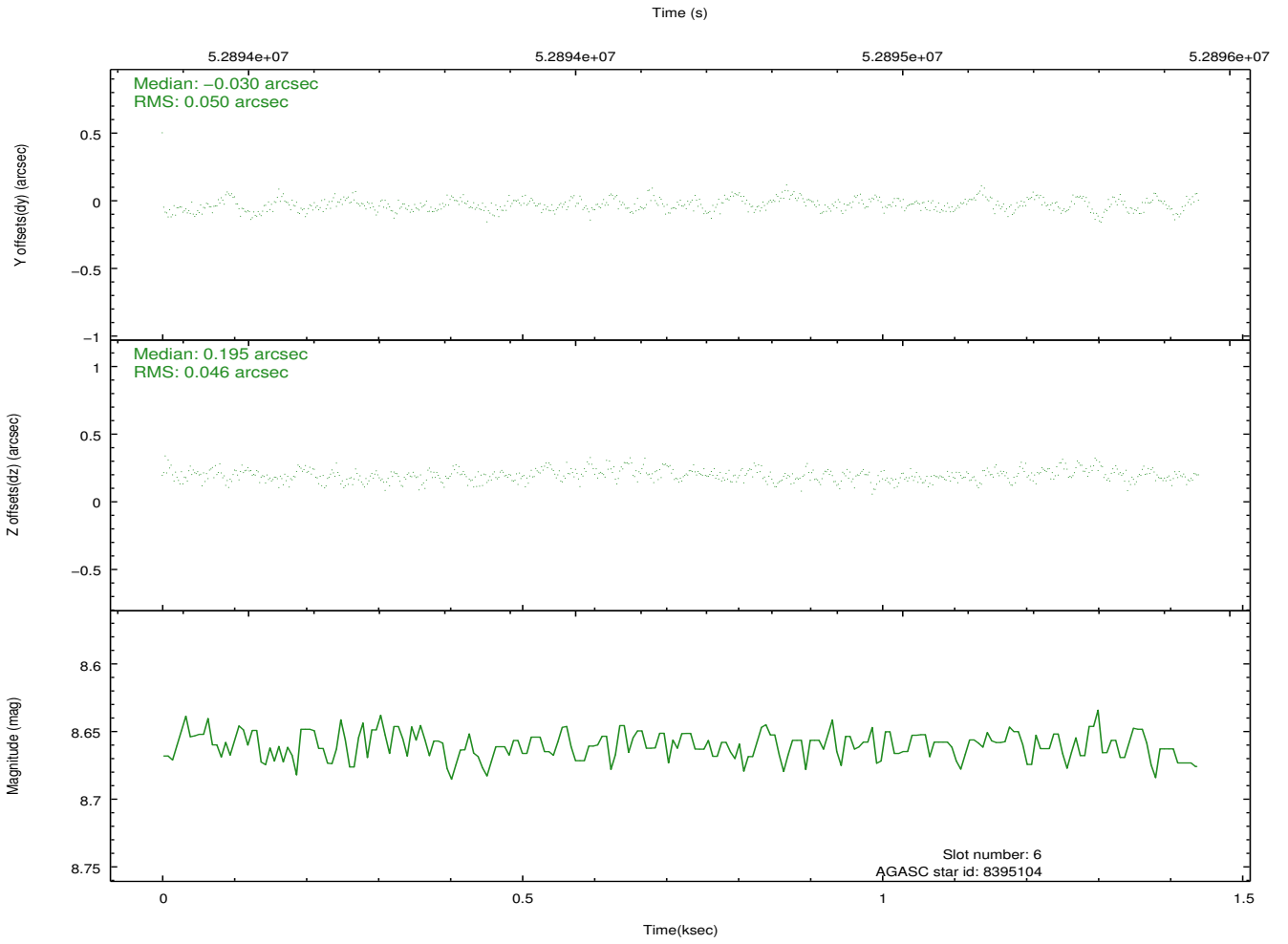
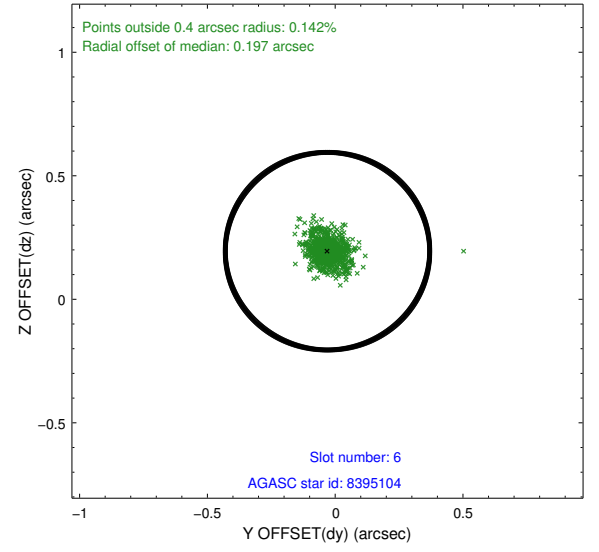
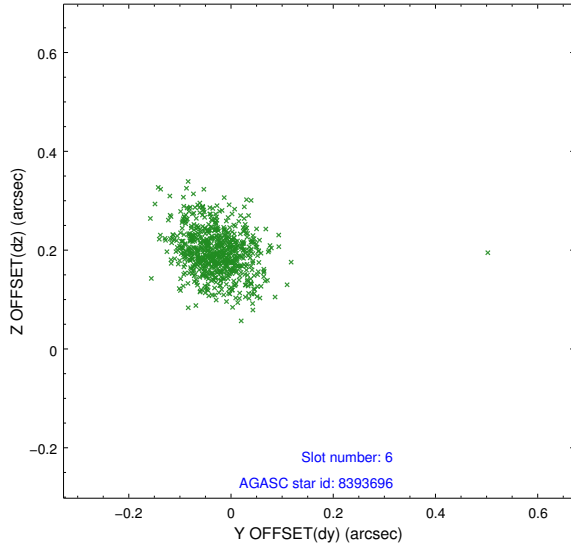
## 2.4.2 Slot 4



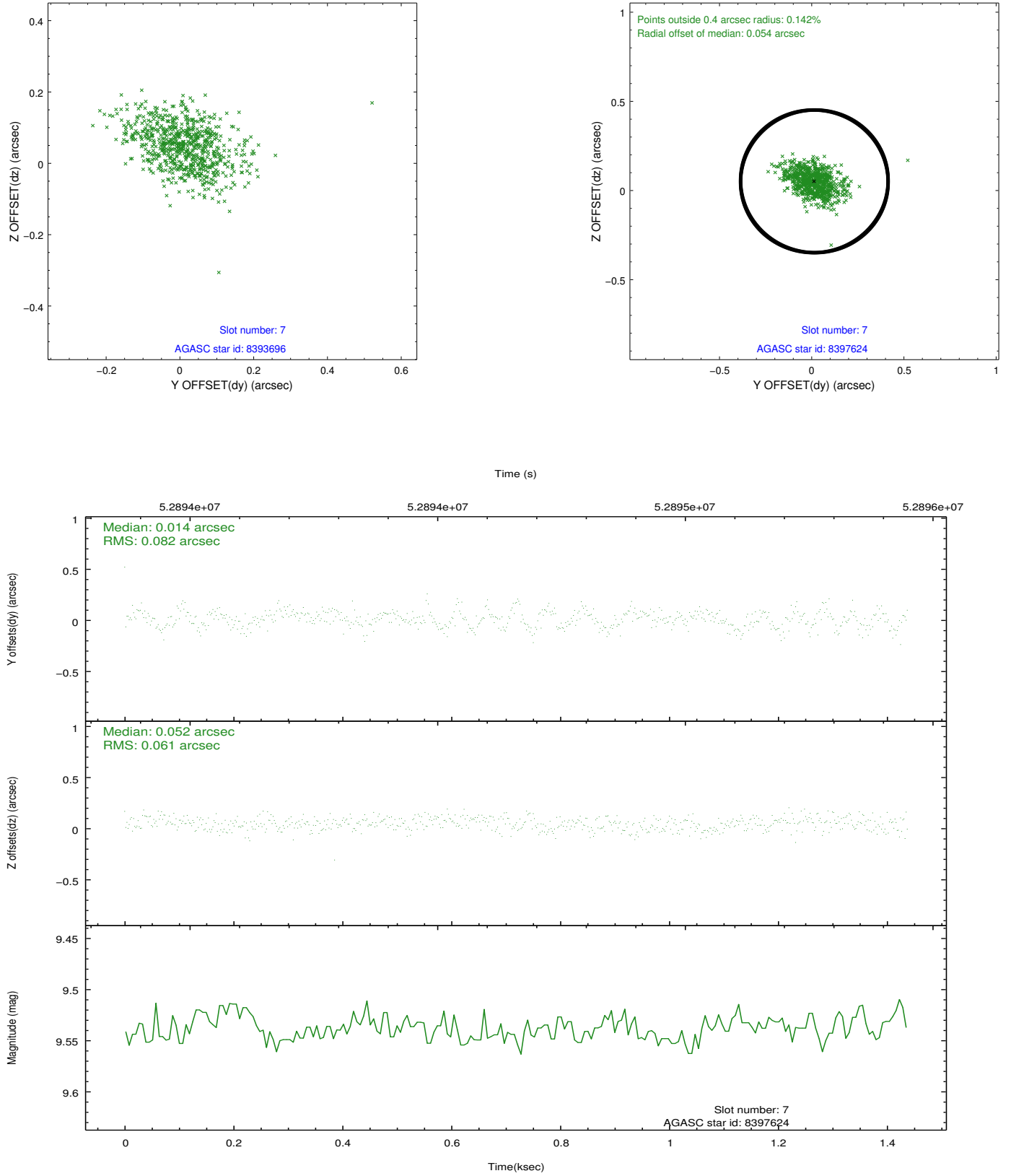
### 2.4.3 Slot 5



## 2.4.4 Slot 6



## 2.4.5 Slot 7



## 2.5 FID Slots

### 3 Point Sources

# A Summary

## A.1 Status

V&V Scientist	Joy Nichols
V&V Date (YYYY-MM-DD)	2010.02.02
V&V Edition	1
V&V Disposition and Status	OK
V&V Charge Time	0

## A.2 Comments

No fid lights were detected for this observation because an intended SIM movement did not occur. Therefore there is no good time interval and no Level 2 events. Level 1 event file is good.

===

HRC-S Optical Axis determination. SIMBAD coordinates for this object are ra = 03:36:47.2895, dec = +00:35:15.928. Observer requested coordinates ra = 03:36:47, dec = +00:35:23.90.30. Target was intended to be off-axis for calibration purposes, but it is not at the intended position on the chip due to the observer's error in the coordinates.