

V&V Reference Report

L2 ASCDS Version : 8.4.4

Observation 9749 - L2 Version 2
Chandra X-Ray Center

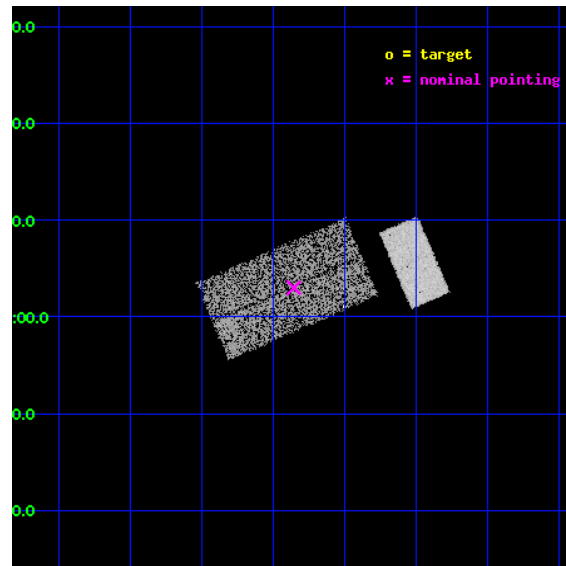
L2 Processing Date : May 3 2012

Contents

1	Front	2
2	OBI	3
2.1	OBI	3
2.1.1	Images	3
2.1.2	Bias	3
2.1.3	Parameters	4
2.1.4	Events	4
2.2	Compared Parameters	5
2.3	Aspect	6
2.4	Star Slots	9
2.4.1	Slot 2	9
2.4.2	Slot 3	10
2.4.3	Slot 4	11
2.4.4	Slot 5	12
2.4.5	Slot 6	13
2.4.6	Slot 7	14
2.5	FID Slots	15
2.5.1	Slot 0	15
2.5.2	Slot 1	16
A	Summary	17
A.1	Status	17
A.2	Comments	17

1 Front

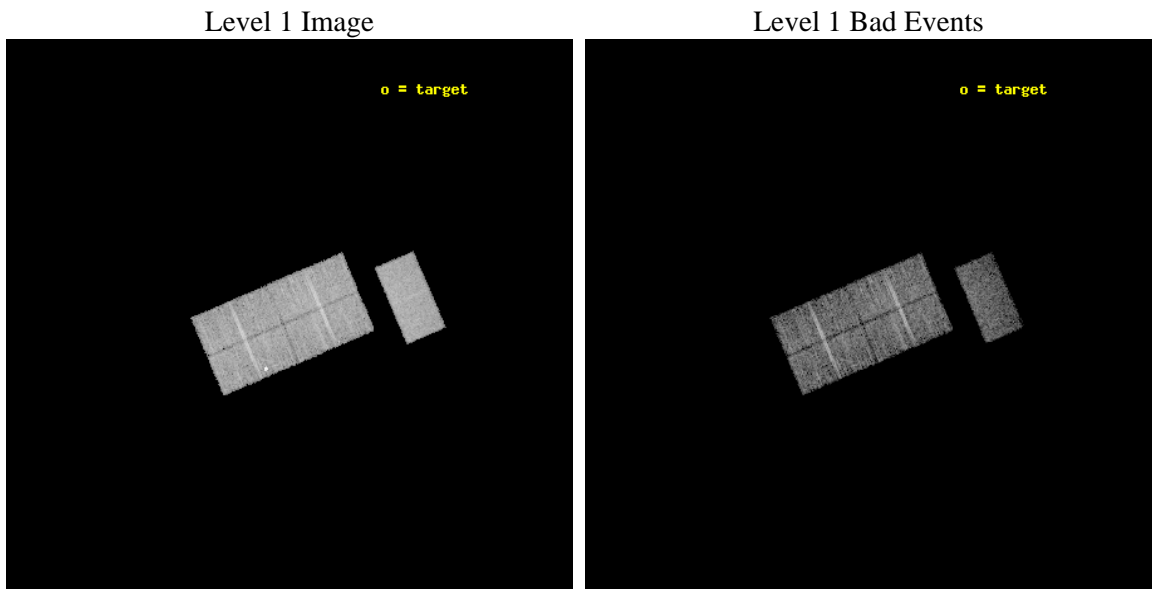
seq_num	100069	Sequence number
obs_id	9749	Observation id
title	Solar wind charge exchange induced X-rays at Venus during the Messenger flyby	Proposal title
observer	Dr. Konrad Dennerl	Principal investigator
object	Venus	Source name
dtcycle	0	
cycle	P	events from which exps? Prim/Second/Both
ra_targ	168.733292	Observer's specified target RA [deg]
dec_targ	4.922889	Observer's specified target Dec [deg]
ra_nom	171.21365071093	Nominal RA [deg]
dec_nom	4.0501889293736	Nominal Dec [deg]
roll_nom	66.797011169244	Nominal Roll [deg]
revision	2	Processing version of data
ontime	6890.4000455737	Sum of GTIs [s]
livetime	6736.8009831577	Livetime [s]
ontime0	6890.4000455737	Sum of GTIs [s]
ontime1	6890.4000455737	Sum of GTIs [s]
ontime2	6890.4000455737	Sum of GTIs [s]
ontime3	6890.4000455737	Sum of GTIs [s]
ontime7	6890.4000455737	Sum of GTIs [s]
l2events	24187	Number of level 2 events



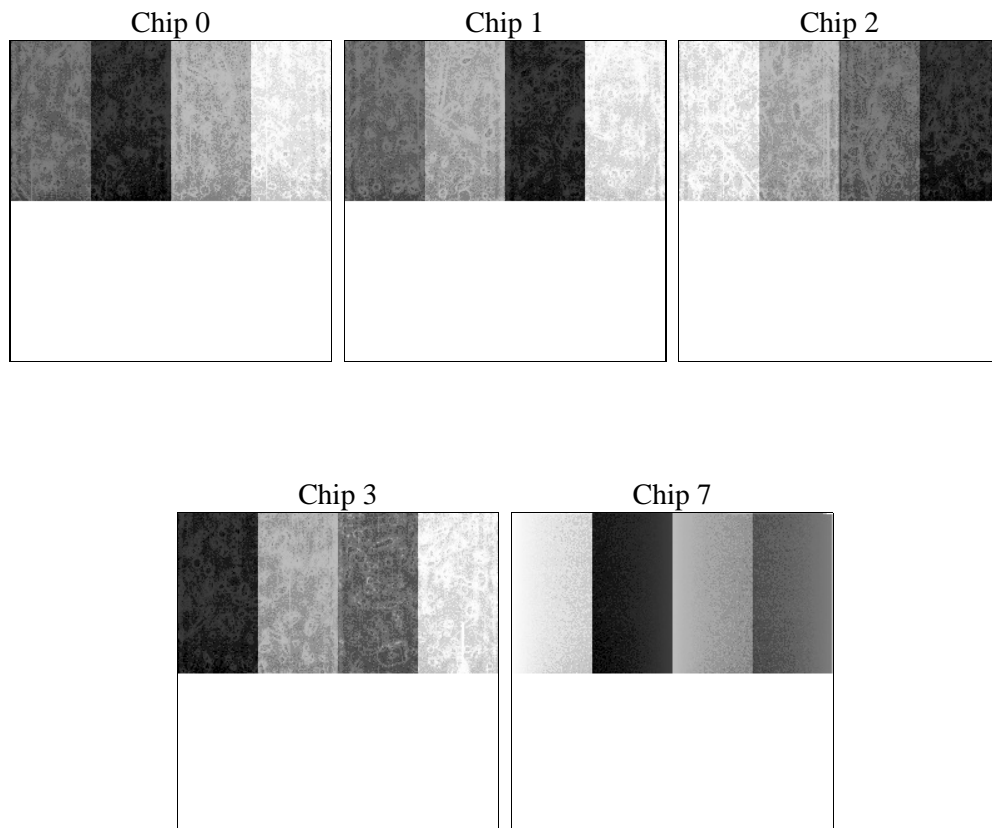
2 OBI

2.1 OBI

2.1.1 Images



2.1.2 Bias



2.1.3 Parameters

obi_num	0	Obi number	sched_exp_time	6700.000000	[s] Scheduled observation exposure time
ascdsver	8.4.4	Processing system revision	ontime	6890.4000455737	Sum of GTIs [s]
caldsver	4.4.9	 	ontime0	6890.4000455737	Sum of GTIs [s]
date	2012-05-03T15:06:48	Date and time of file creation	ontime1	6890.4000455737	Sum of GTIs [s]
revision	2	Processing version of data	ontime2	6890.4000455737	Sum of GTIs [s]
			ontime3	6890.4000455737	Sum of GTIs [s]
			ontime7	6890.4000455737	Sum of GTIs [s]
			l1events	161809	Number of level 1 events

2.1.4 Events

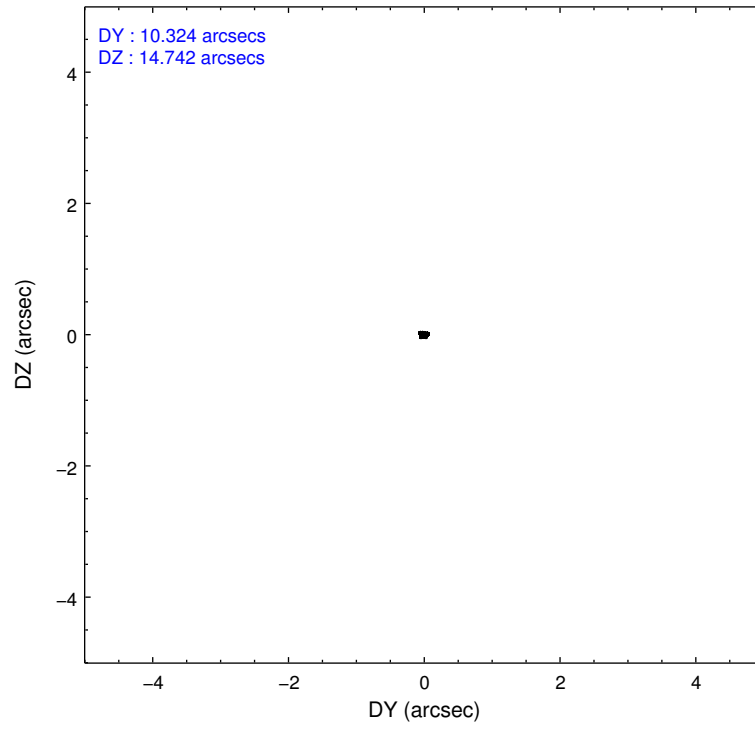
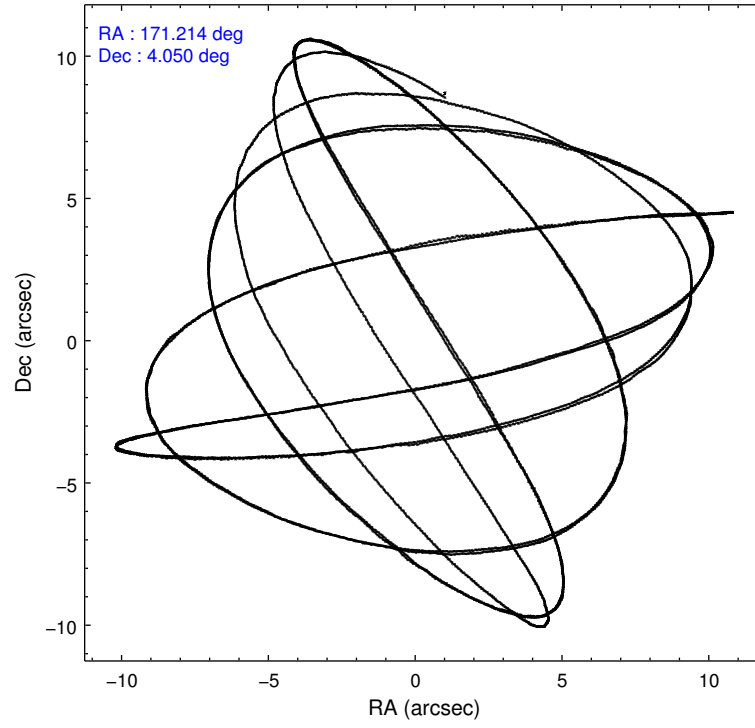
	ccd 0	ccd 1	ccd 2	ccd 3	ccd 7
level 1 events	29807	31862	34539	31146	34455
rejected events	26791	27177	31593	28150	19505
rejected %	89%	85%	91%	90%	56%

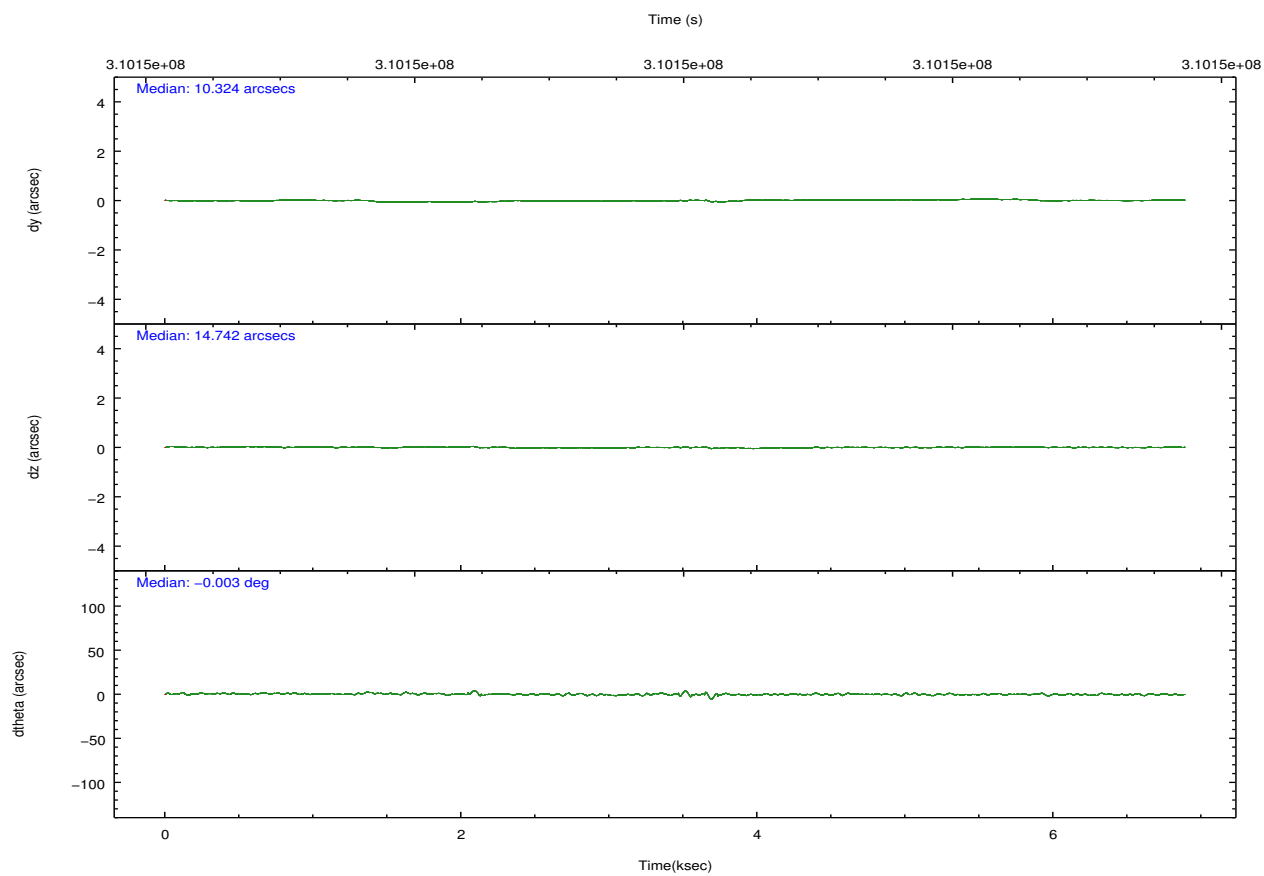
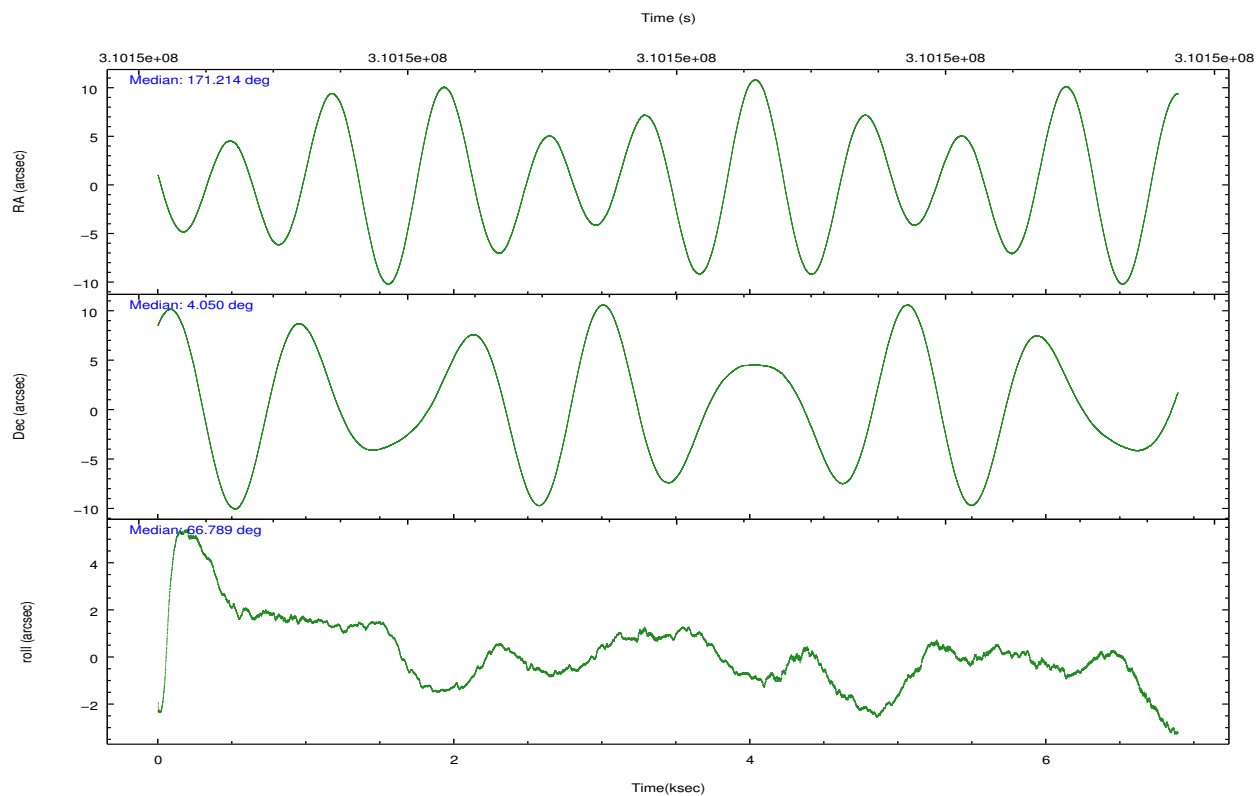
	ccd 0	ccd 1	ccd 2	ccd 3	ccd 7
grade 0 events	1061	2701	1037	1151	1576
	3%	8%	3%	3%	4%
grade 1 events	25	17	18	21	59
	0%	0%	0%	0%	0%
grade 2 events	732	720	691	595	3232
	2%	2%	2%	1%	9%
grade 3 events	409	420	379	398	1644
	1%	1%	1%	1%	4%
grade 4 events	404	420	411	419	1514
	1%	1%	1%	1%	4%
grade 5 events	1094	1229	954	1299	3695
	3%	3%	2%	4%	10%
grade 6 events	553	678	565	573	7673
	1%	2%	1%	1%	22%
grade 7 events	25529	25677	30484	26690	15062
	85%	80%	88%	85%	43%

2.2 Compared Parameters

Parameter	Planned	Actual	Parameter	Planned	Actual
Instrument	ACIS	ACIS	Obspar format version number	7	7
Detector	ACIS-01237	ACIS-01237	Obspar file type	PREDICTED	ACTUAL
Grating	NONE	NONE	Obspar update status	NONE	UPDATED
Data mode	VFAINT	VFAINT	CCD I0 on	Y	Y
Observation mode	POINTING	POINTING	CCD I1 on	Y	Y
[deg] Pointing RA	171.217057	171.2136507109296	CCD I2 on	Y	Y
[deg] Pointing Dec	4.022911	4.050188929373628	CCD I3 on	Y	Y
[deg] Pointing Roll	66.588096	66.797011169244	CCD S0 on	N	N
[s] Window start time (MET)	309398465.184000	309398465.184000	CCD S1 on	N	N
[s] Window stop time (MET)	310608065.184000	310608065.184000	CCD S2 on	O1	N
[mm] SIM focus pos	-0.782348	-0.7809083437167272	CCD S3 on	O2	Y
[mm] SIM defocus	0	0.001439871863259334	CCD S4 on	N	N
[mm] SIM translation stage pos	-233.592463	-233.5874344608287	CCD S5 on	N	N
[mm] SIM translation stage offset	0	-0.005018542100998502	Number of optional ACIS chips dropped	1	1
[s] Observation start time (MET)	310146689.184000	310146312.6176	On-chip summing requested	N	N
Observation start date	2007-10-30T15:50:24	2007-10-30T15:45:12	Subarray requested	CUSTOM	1/2
[s] Observation end time (MET)	310153389.184000	310153522.98044	Subarray start row	513	513
Observation end date	2007-10-30T17:42:04	2007-10-30T17:45:22	Subarray row count	512	512
Read mode	TIMED	TIMED	Alternating exposures requested	N	N
			[s] Primary exposure time	0.000000	1.8

2.3 Aspect



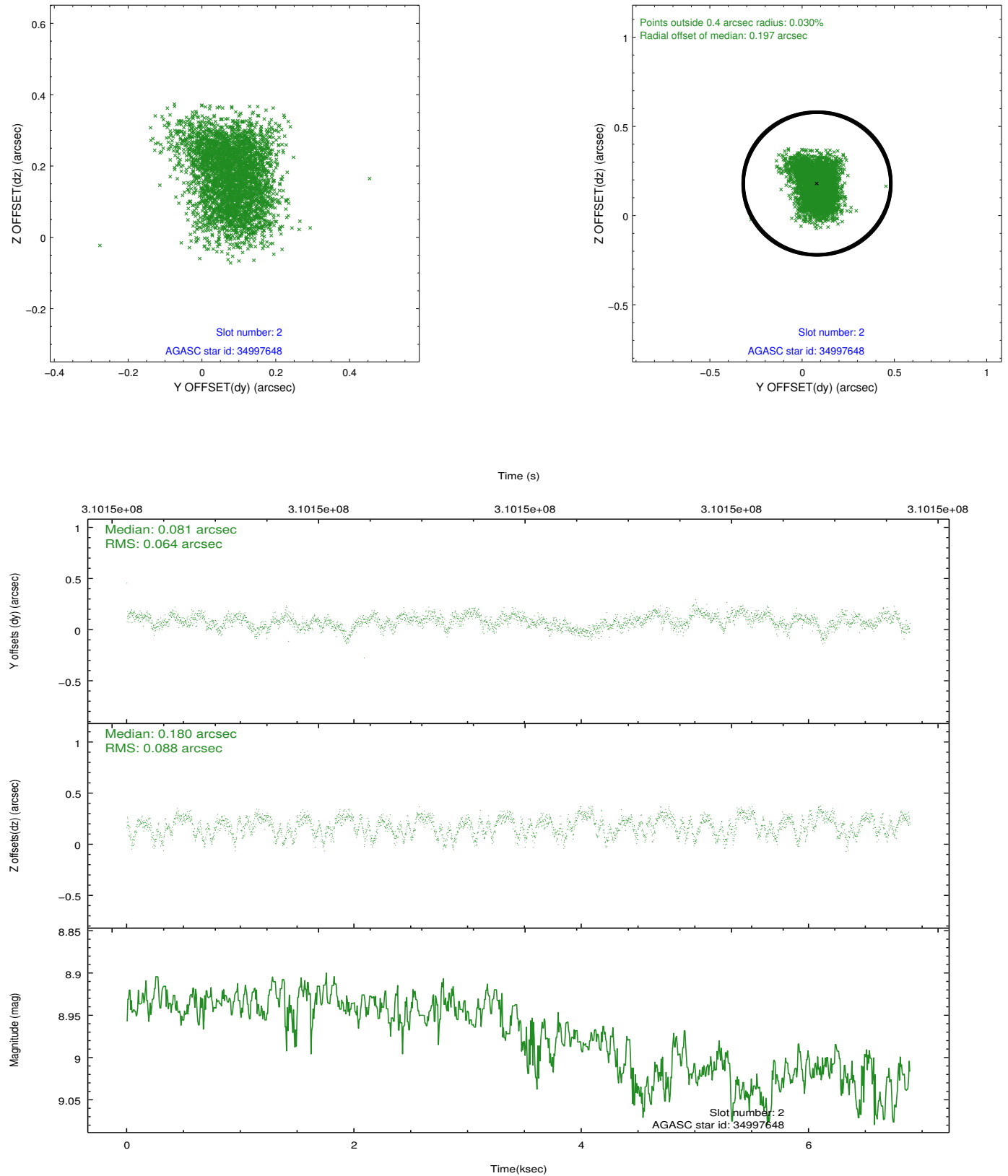


Slot Statistics

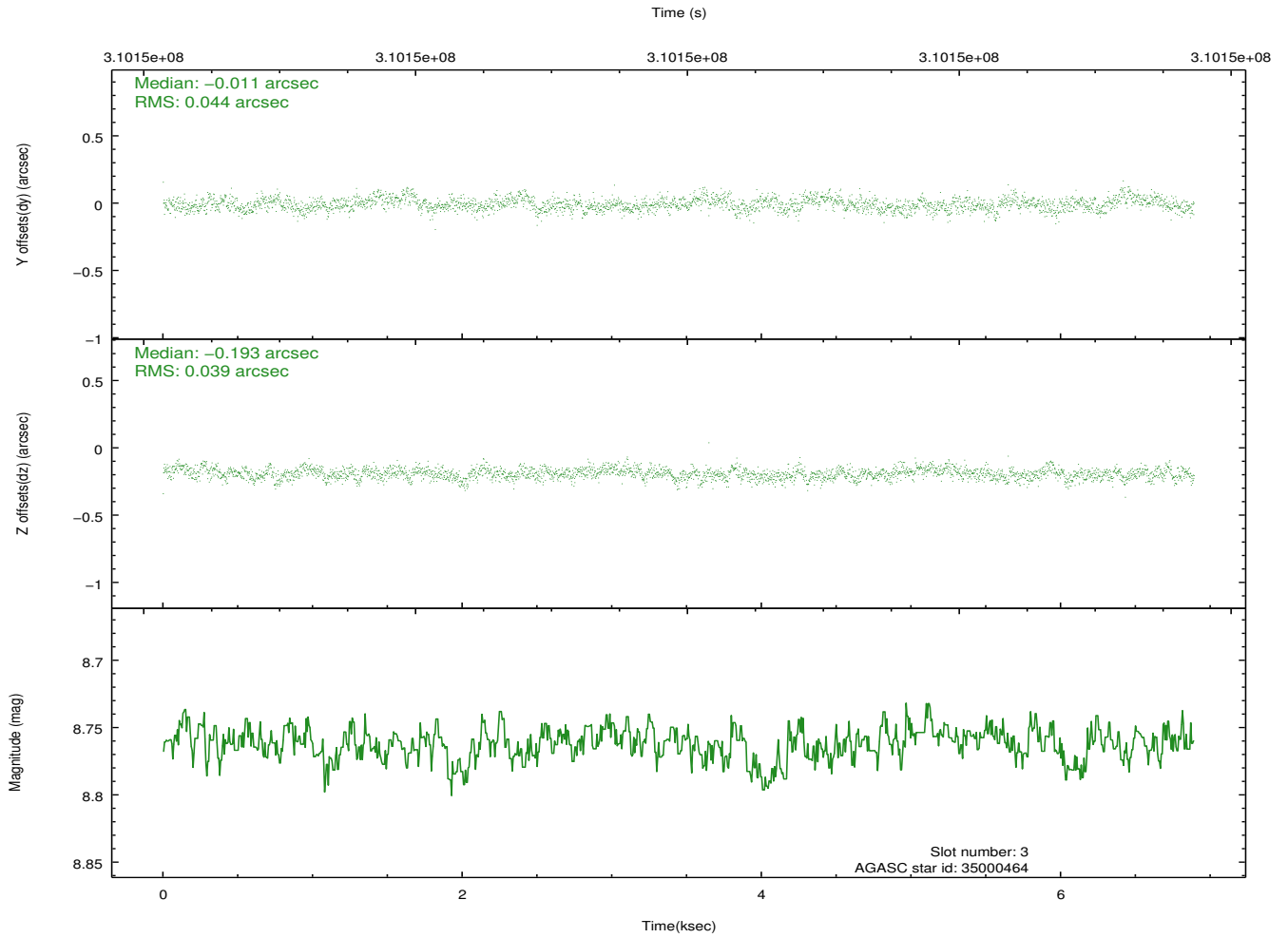
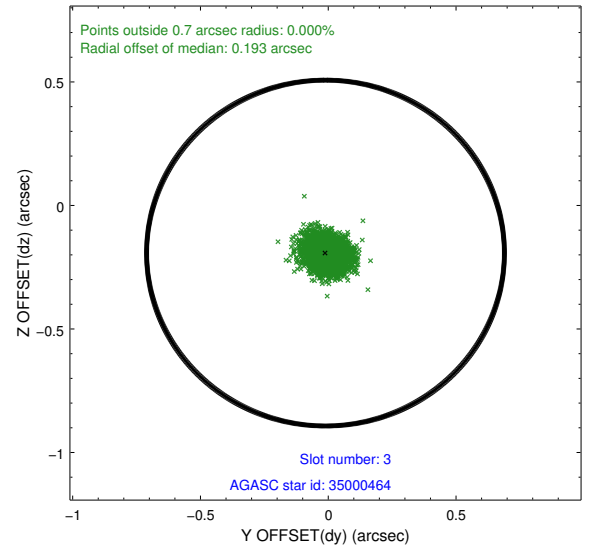
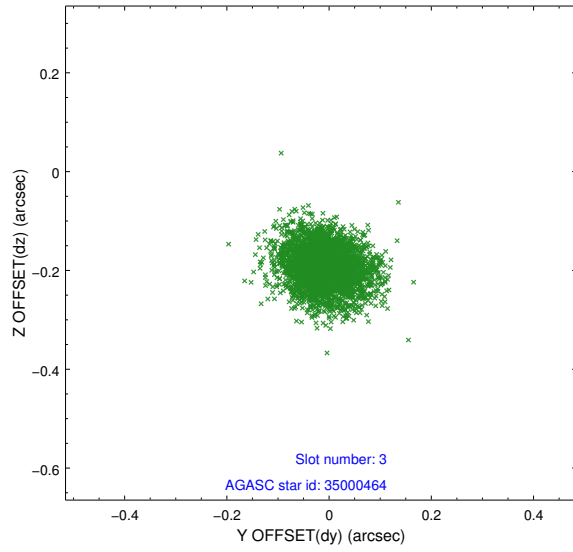
slot	status	id	mag	n_pts	med_dy	med_dz	dr1	dr2	ra	dec	mean_y	mean_z
0	FID	ACIS-I-2	7.13	1679	0.006	-0.046	0.011	0.019	0.000000	0.000000	-764.90	-844.75
1	FID	ACIS-I-5	7.23	1681	-0.070	0.094	0.011	0.019	0.000000	0.000000	-1819.47	1058.80
2	GUIDE	34997648	8.97	3359	0.081	0.180	0.116	0.185	171.624680	3.491643	-1172.16	-2103.40
3	GUIDE	35000464	8.76	3361	-0.011	-0.193	0.062	0.104	170.965623	3.618933	-1694.67	250.92
4	GUIDE	35002728	8.22	3359	-0.084	-0.240	0.075	0.124	170.760736	4.138149	-270.52	1669.56
5	GUIDE	35002848	9.91	3356	0.027	0.271	0.116	0.189	171.207329	3.477909	-1814.02	-746.75
6	GUIDE	35005552	7.08	3362	0.030	0.020	0.046	0.078	171.414379	3.301138	-2103.04	-1683.40
7	GUIDE	35005744	6.61	3361	-0.042	-0.032	0.067	0.109	171.458567	3.860108	-193.76	-1028.70

2.4 Star Slots

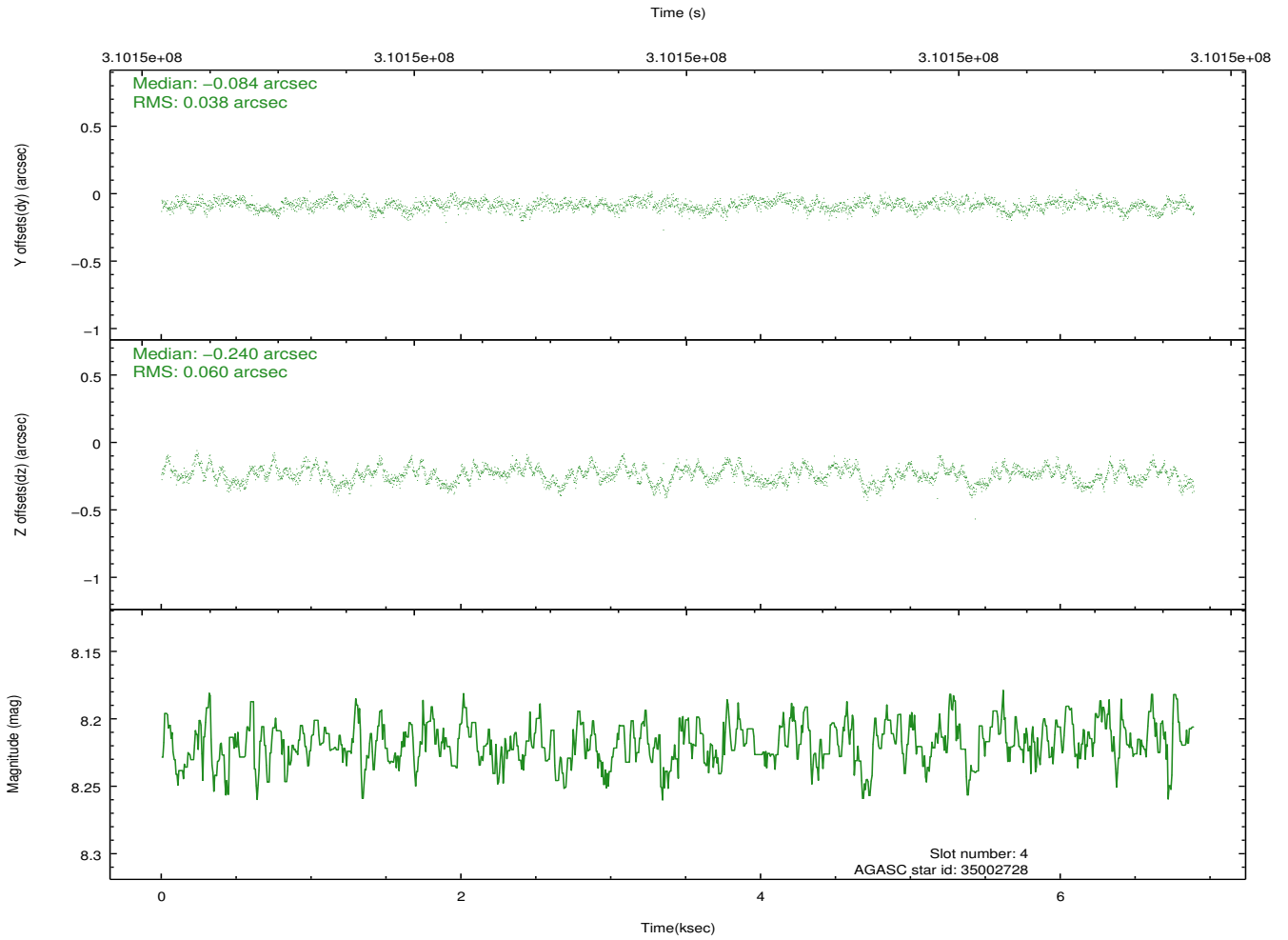
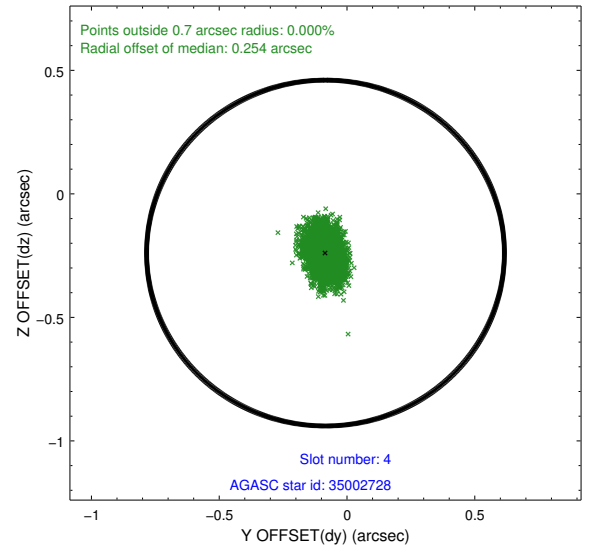
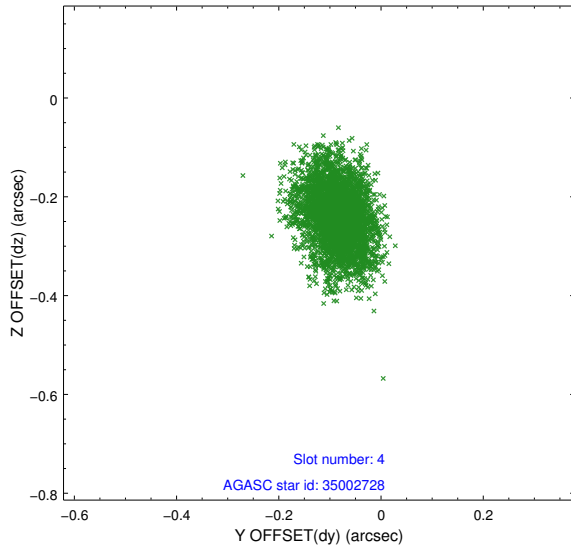
2.4.1 Slot 2



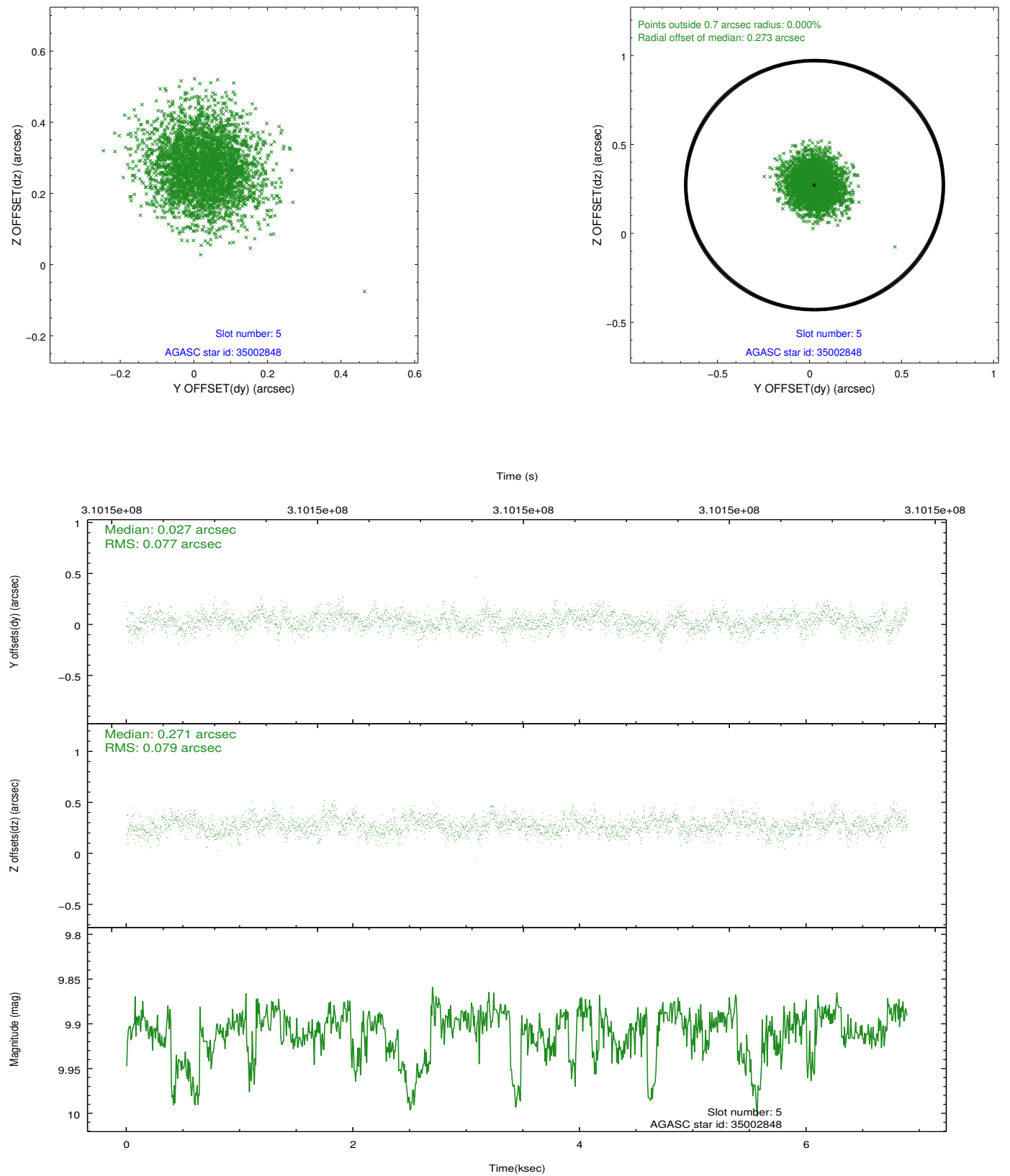
2.4.2 Slot 3



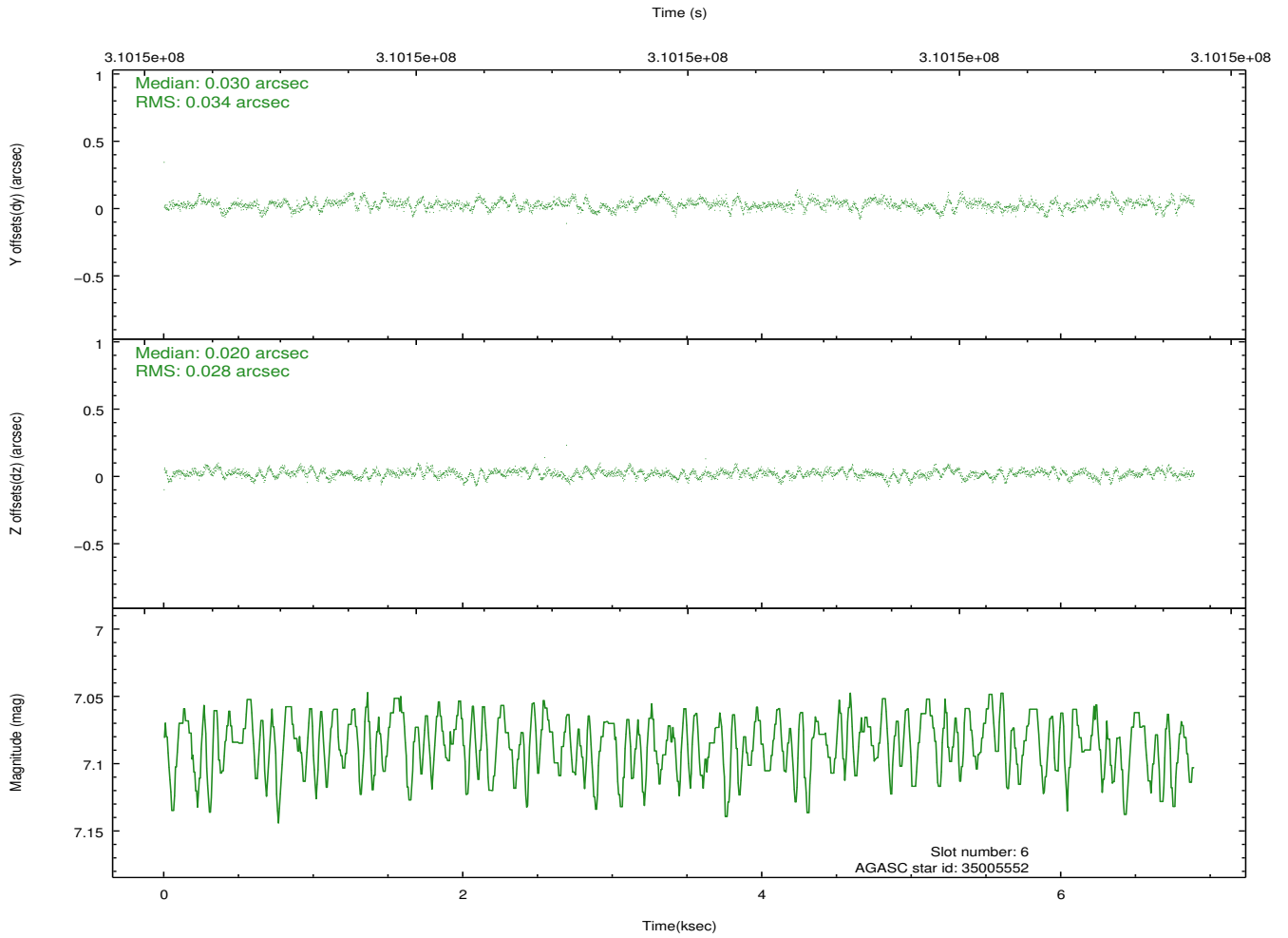
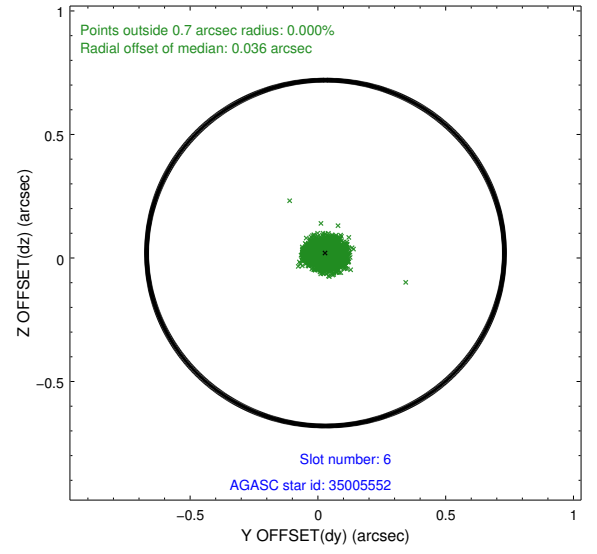
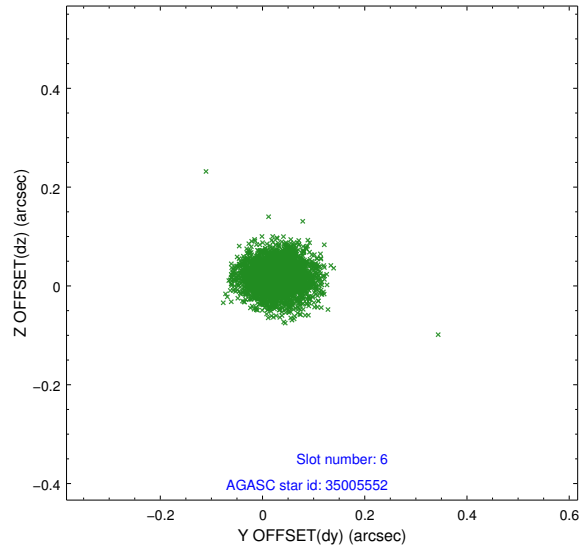
2.4.3 Slot 4



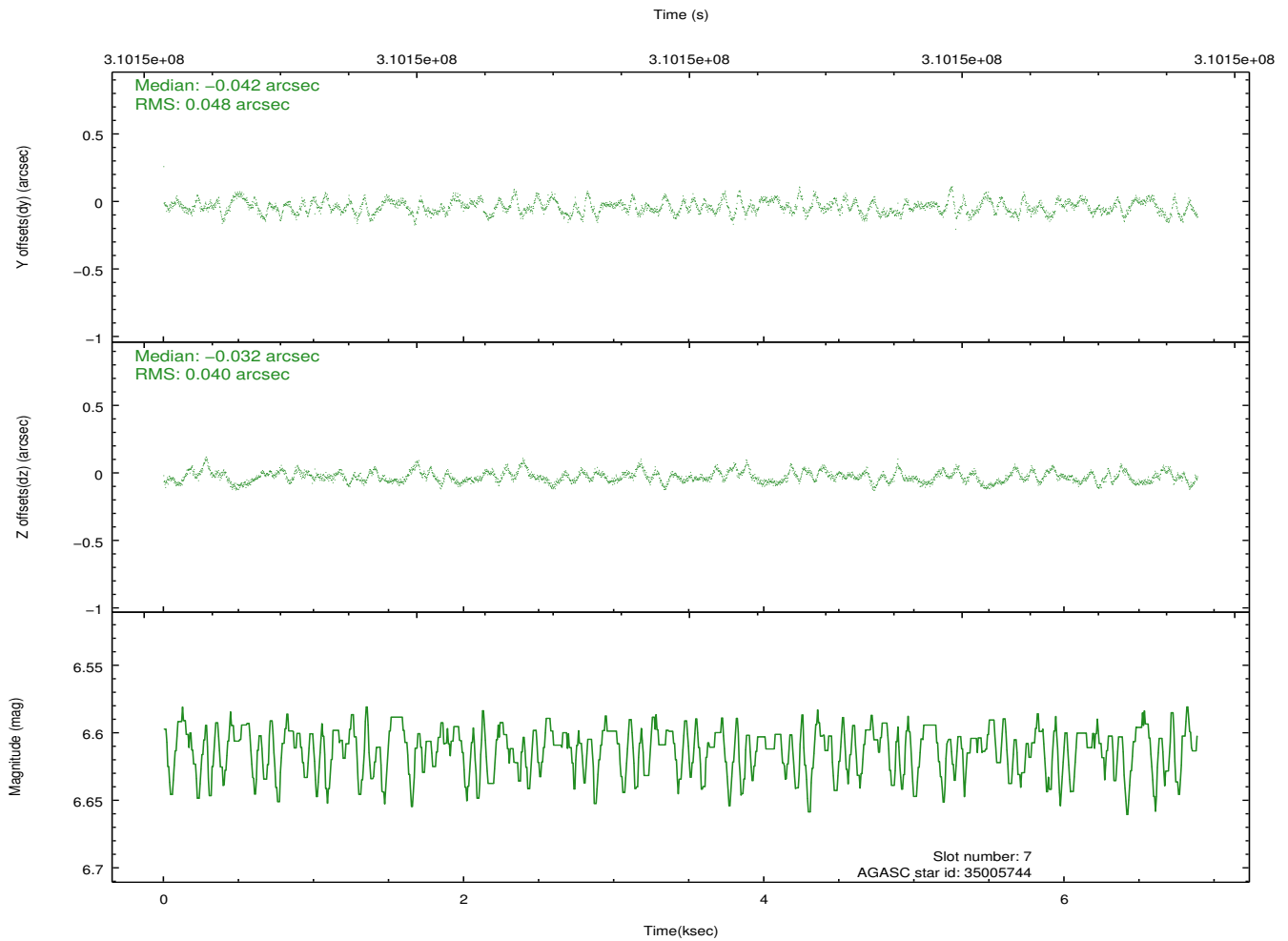
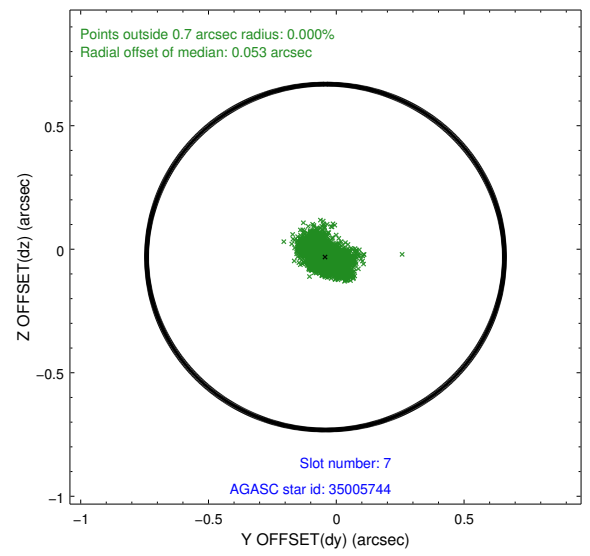
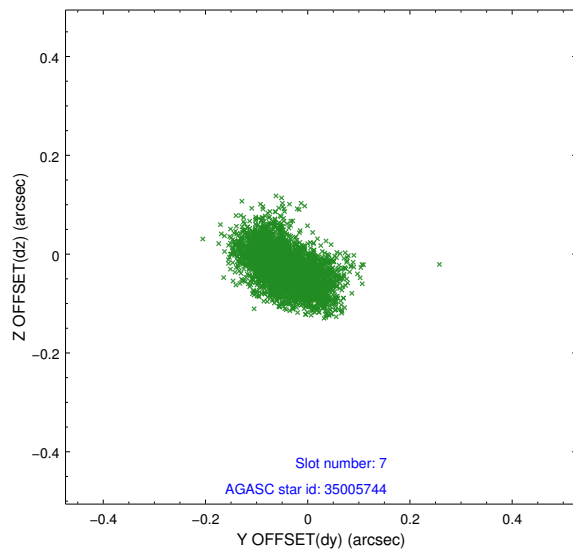
2.4.4 Slot 5



2.4.5 Slot 6

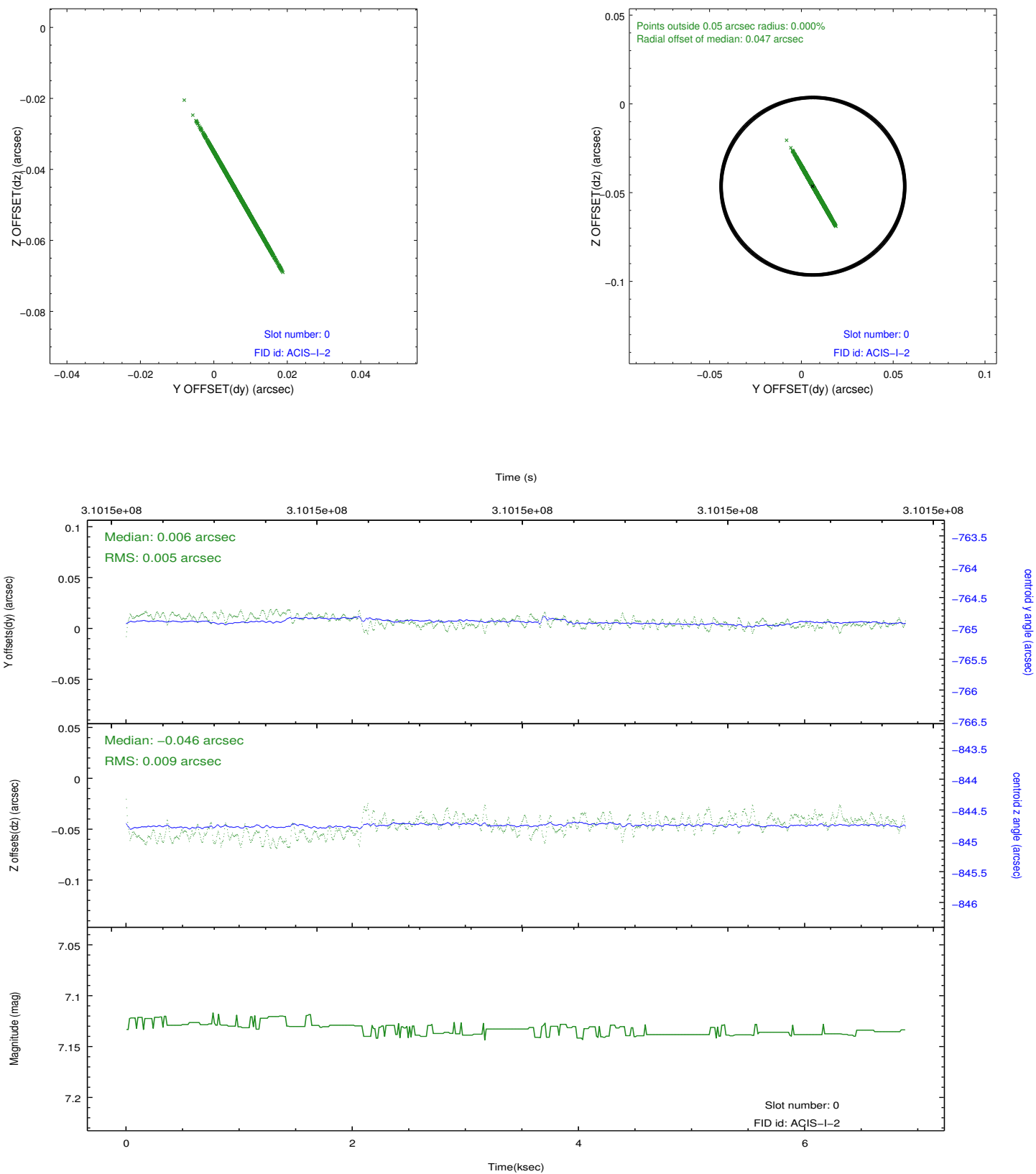


2.4.6 Slot 7

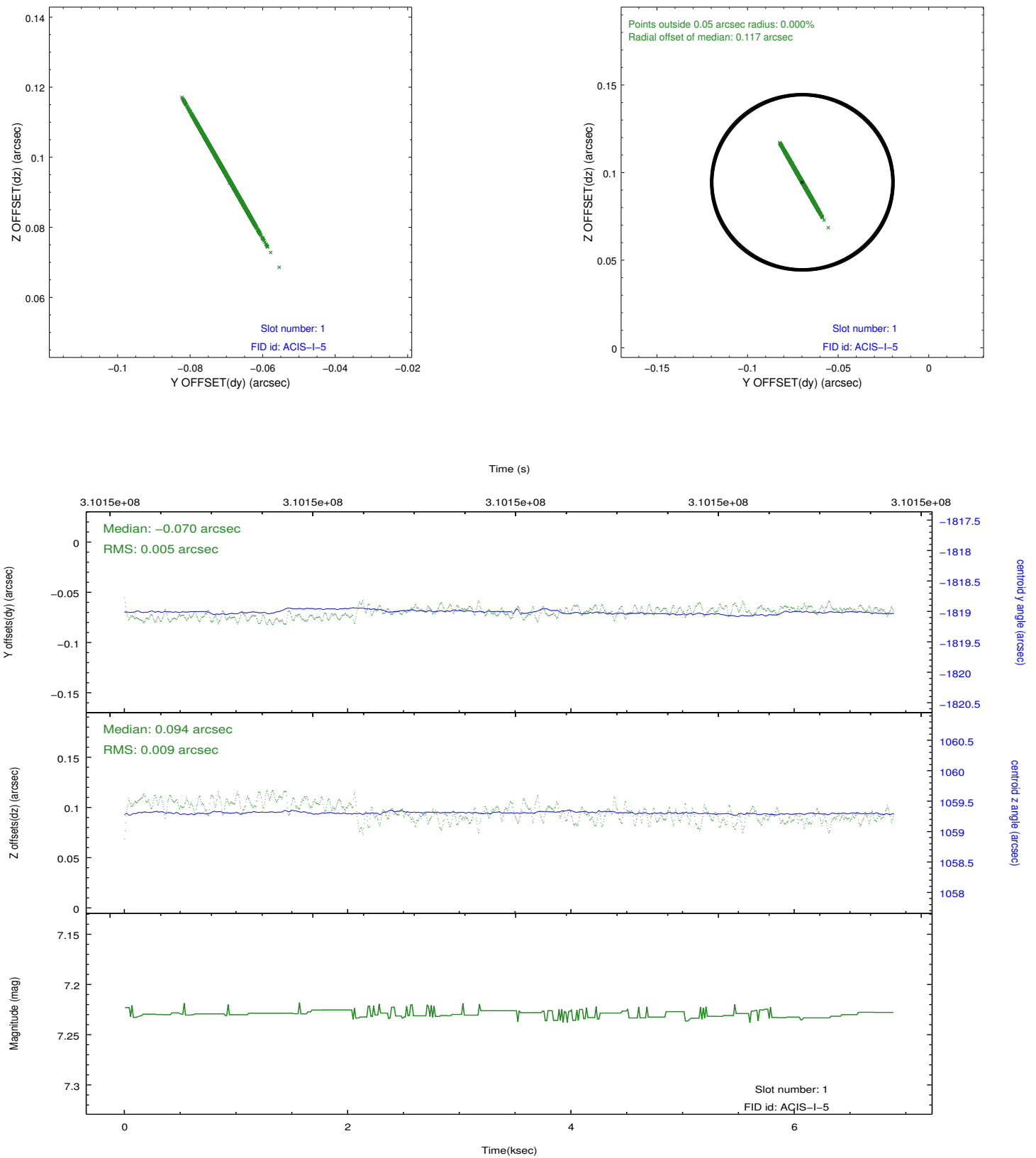


2.5 FID Slots

2.5.1 Slot 0



2.5.2 Slot 1



A Summary

A.1 Status

V&V Scientist	Beth Sundheim
V&V Date (YYYY-MM-DD)	2012.05.04
V&V Edition	1
V&V Disposition and Status	OK
V&V Charge Time	6.89040004

A.2 Comments

Window preference met.