

# V&V Reference Report

## L2 ASCDS Version : 8.4.4

Observation 9309 - L2 Version 2  
Chandra X-Ray Center

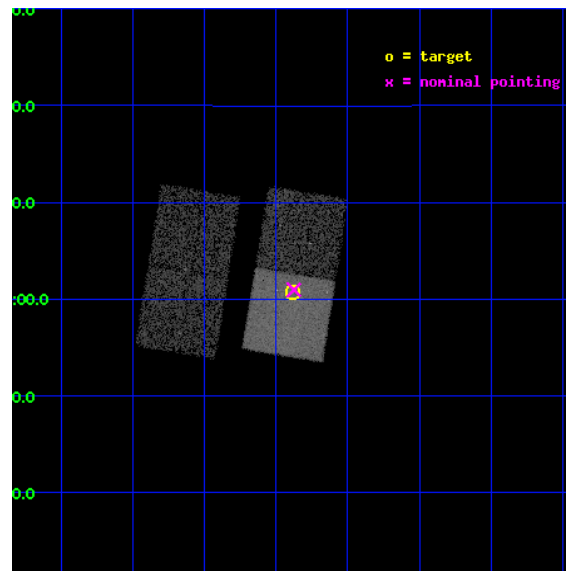
L2 Processing Date : May 11 2012

## Contents

<b>1</b>	<b>Front</b>	<b>2</b>
<b>2</b>	<b>OBI</b>	<b>3</b>
2.1	OBI . . . . .	3
2.1.1	Images . . . . .	3
2.1.2	Bias . . . . .	3
2.1.3	Parameters . . . . .	4
2.1.4	Events . . . . .	4
2.2	Compared Parameters . . . . .	5
2.3	Aspect . . . . .	6
2.4	Star Slots . . . . .	9
2.4.1	Slot 3 . . . . .	9
2.4.2	Slot 4 . . . . .	10
2.4.3	Slot 5 . . . . .	11
2.4.4	Slot 6 . . . . .	12
2.4.5	Slot 7 . . . . .	13
2.5	FID Slots . . . . .	14
2.5.1	Slot 0 . . . . .	14
2.5.2	Slot 1 . . . . .	15
2.5.3	Slot 2 . . . . .	16
<b>A</b>	<b>Summary</b>	<b>17</b>
A.1	Status . . . . .	17
A.2	Comments . . . . .	17

# 1 Front

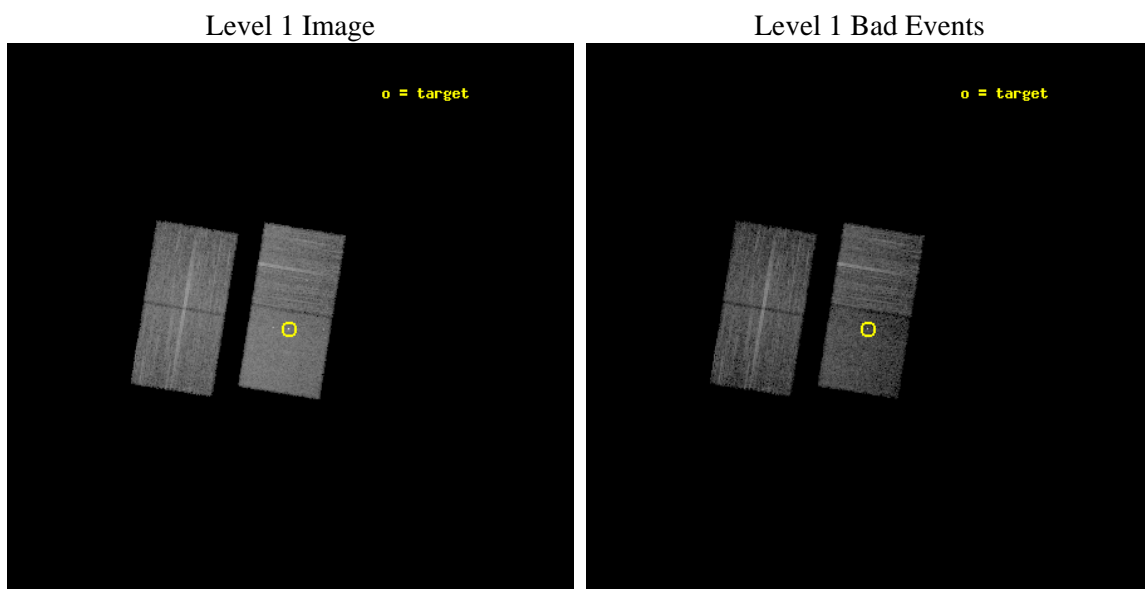
seq_num	701749	Sequence number
obs_id	9309	Observation id
title	Towards a Complete Sample: 3CR Extragalactic Radio Sources with $z < 0.3$	Proposal title
observer	Dr. Daniel Harris	Principal investigator
object	3C287.1	Source name
dtcycle	0	&#160
cycle	P	events from which exps? Prim/Second/Both
ra_targ	203.222083	Observer's specified target RA [deg]
dec_targ	2.0125	Observer's specified target Dec [deg]
ra_nom	203.21893421696	Nominal RA [deg]
dec_nom	2.0162093420992	Nominal Dec [deg]
roll_nom	99.225507059655	Nominal Roll [deg]
revision	2	Processing version of data
ontime	8122.0000624657	Sum of GTIs [s]
livetime	8015.8801523201	Livetime [s]
ontime2	8122.0000624657	Sum of GTIs [s]
ontime3	8122.0000624657	Sum of GTIs [s]
ontime6	8122.0000624657	Sum of GTIs [s]
ontime7	8122.0000624657	Sum of GTIs [s]
l2events	51682	Number of level 2 events



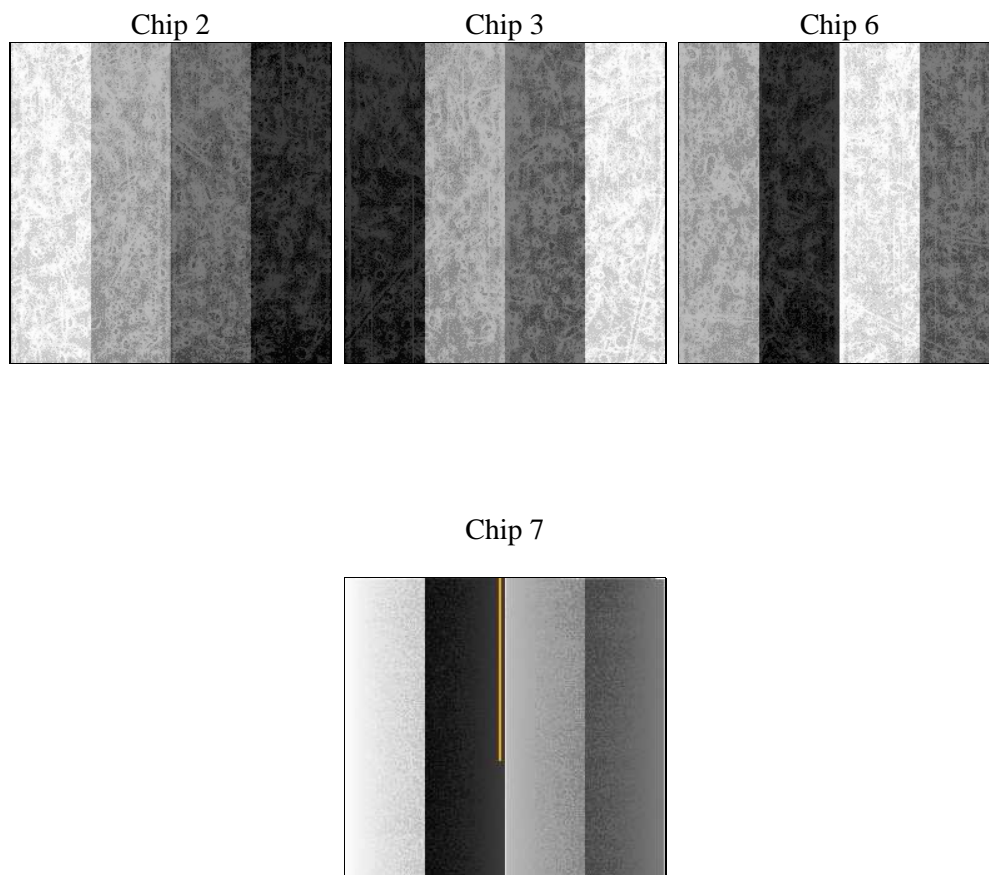
## 2 OBI

### 2.1 OBI

#### 2.1.1 Images



#### 2.1.2 Bias



### 2.1.3 Parameters

obi_num	0	Obi number	sched_exp_time	8000.000000	[s] Scheduled observation exposure time
ascdsver	8.4.4	Processing system revision	ontime	8122.0000624657	Sum of GTIs [s]
caldsver	4.4.9	&#160	ontime2	8122.0000624657	Sum of GTIs [s]
date	2012-05-12T00:17:55	Date and time of file creation	ontime3	8122.0000624657	Sum of GTIs [s]
revision	2	Processing version of data	ontime6	8122.0000624657	Sum of GTIs [s]
			ontime7	8122.0000624657	Sum of GTIs [s]
			l1events	299382	Number of level 1 events

### 2.1.4 Events

	ccd 2	ccd 3	ccd 6	ccd 7
level 1 events	72877	68391	73863	84251
rejected events	66481	62329	66952	48116
rejected %	91%	91%	90%	57%

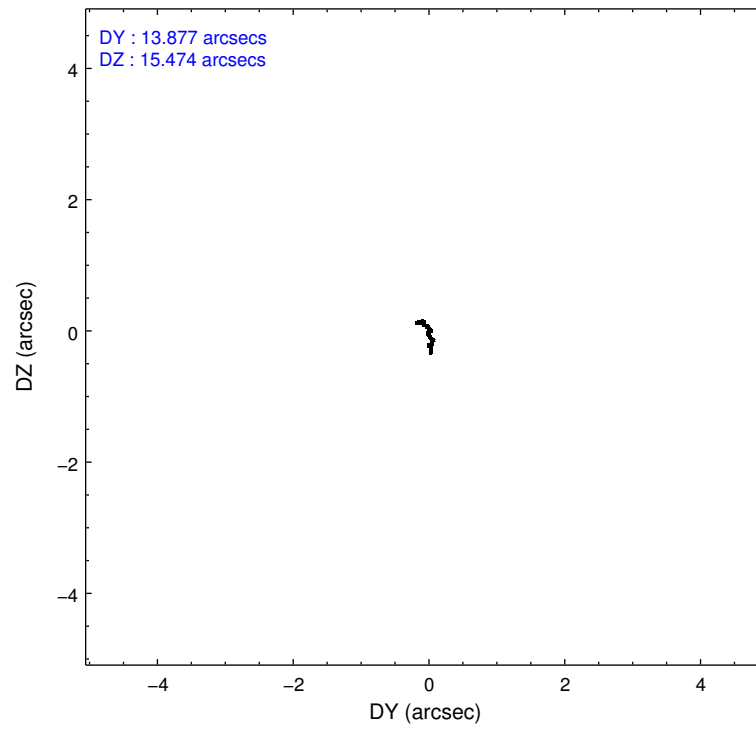
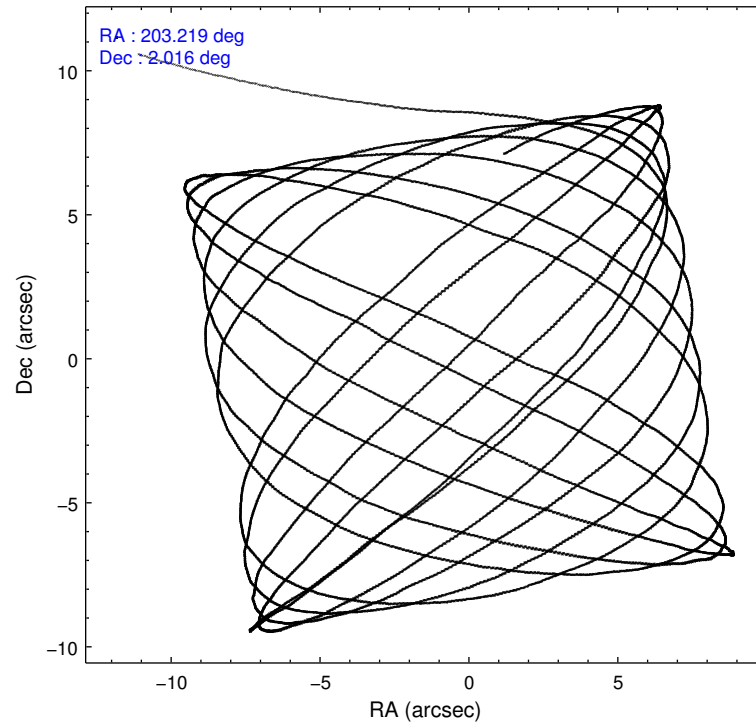
	ccd 2	ccd 3	ccd 6	ccd 7
grade 0 events	2462	2450	2809	4186
	3%	3%	3%	4%
grade 1 events	52	40	35	167
	0%	0%	0%	0%
grade 2 events	1773	1364	1722	8296
	2%	1%	2%	9%
grade 3 events	773	736	771	3661
	1%	1%	1%	4%
grade 4 events	751	775	805	3654
	1%	1%	1%	4%
grade 5 events	2286	2968	2971	8754
	3%	4%	4%	10%
grade 6 events	1335	1382	1536	19918
	1%	2%	2%	23%
grade 7 events	63445	58676	63214	35615
	87%	85%	85%	42%

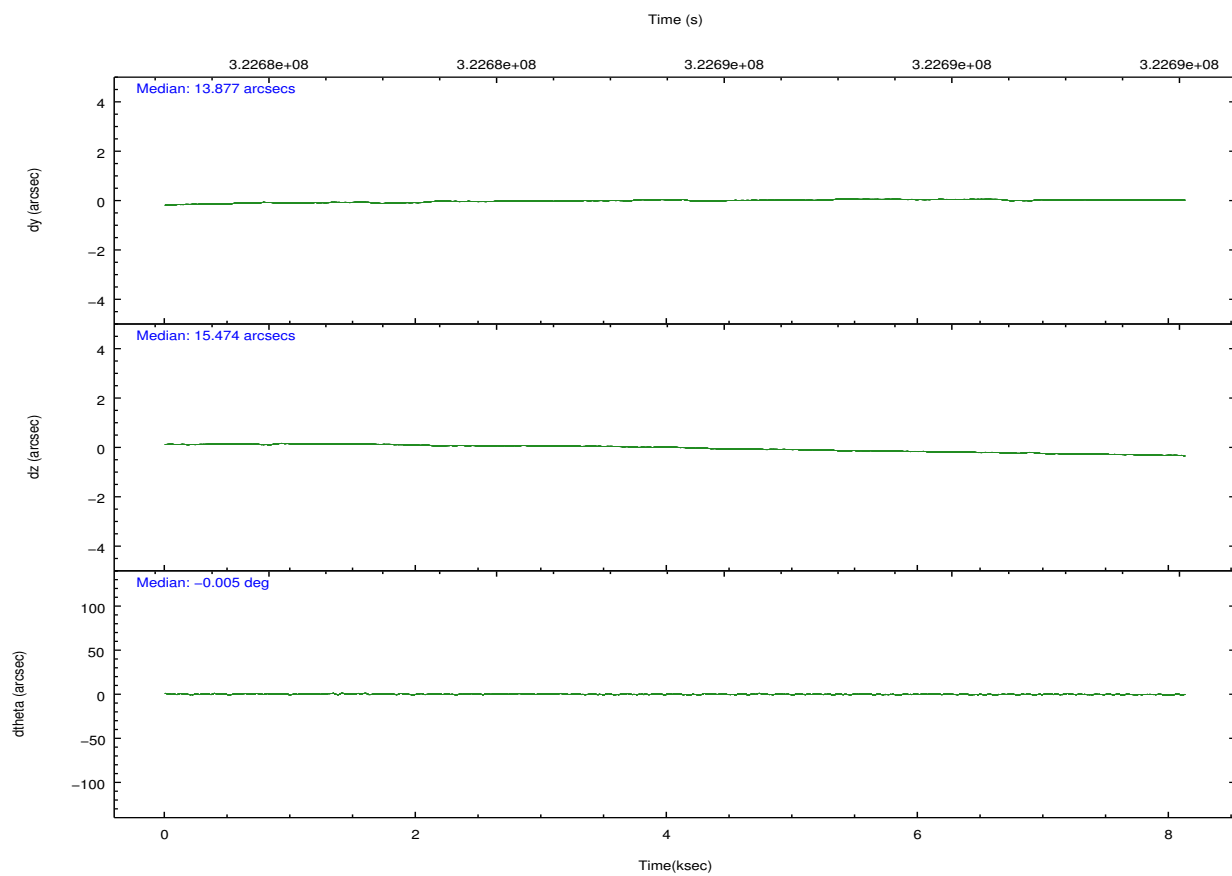
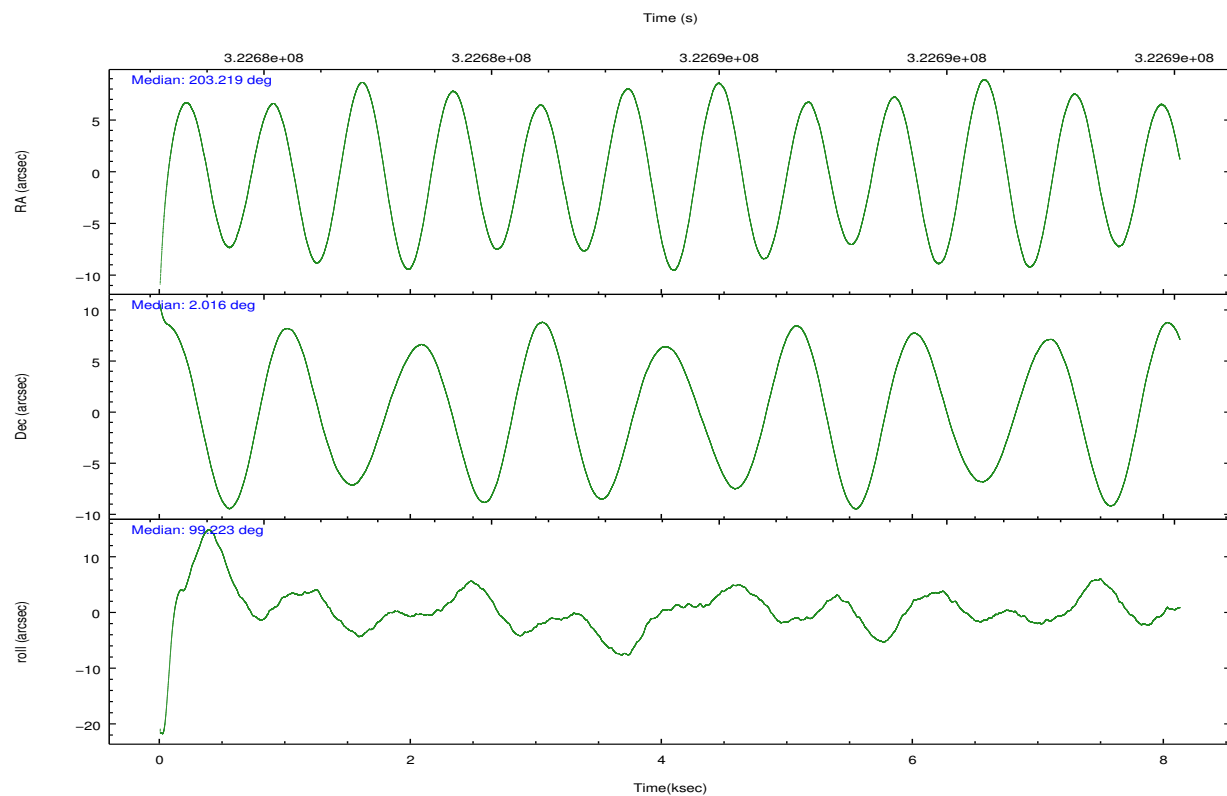


## 2.2 Compared Parameters

Parameter	Planned	Actual	Parameter	Planned	Actual
Instrument	ACIS	ACIS	Obspar format version number	7	7
Detector	ACIS-2367	ACIS-2367	Obspar file type	PREDICTED	ACTUAL
Grating	NONE	NONE	Obspar update status	NONE	UPDATED
Data mode	VFAINT	VFAINT	Number of optional ACIS chips dropped	0	0
Observation mode	POINTING	POINTING	On-chip summing requested	N	N
[deg] Pointing RA	203.236492	203.2189342169595	Subarray requested	NONE	NONE
[deg] Pointing Dec	1.995223	2.016209342099222	Alternating exposures requested	N	N
[deg] Pointing Roll	99.068300	99.22550705965517	[s] Primary exposure time	0.000000	3.1
[mm] SIM focus pos	-0.684267	-0.6828225247311905			
[mm] SIM defocus	0	0.001444936568705701			
[mm] SIM translation stage pos	-190.132523	-190.1400660498719			
[mm] SIM translation stage offset	0	0.00754346686406393			
[s] Observation start time (MET)	322681637.184000	322680300.73726			
Observation start date	2008-03-23T17:46:12	2008-03-23T17:25:00			
[s] Observation end time (MET)	322689637.184000	322690337.53775			
Observation end date	2008-03-23T19:59:32	2008-03-23T20:12:17			
Read mode	TIMED	TIMED			

## 2.3 Aspect



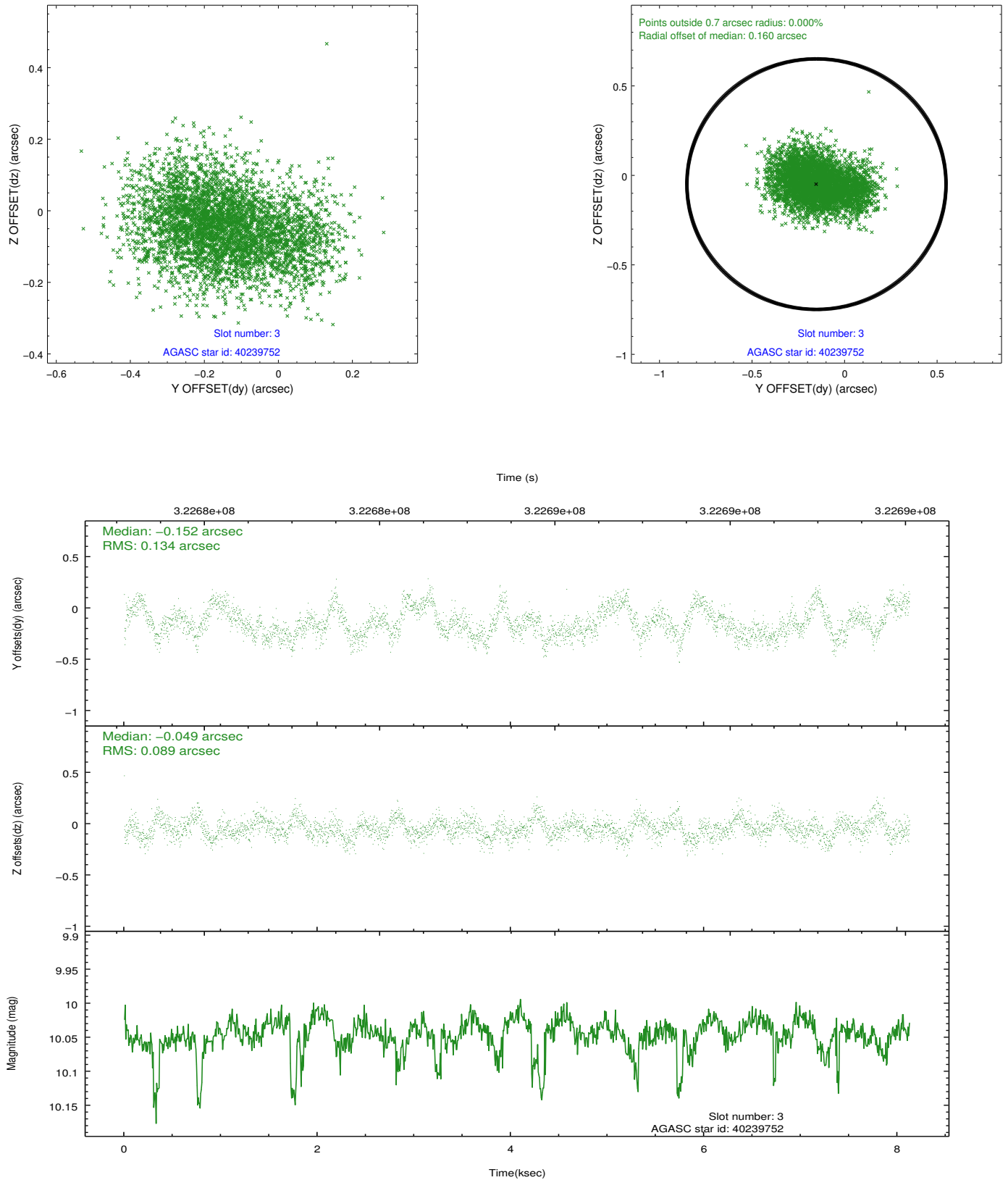


### Slot Statistics

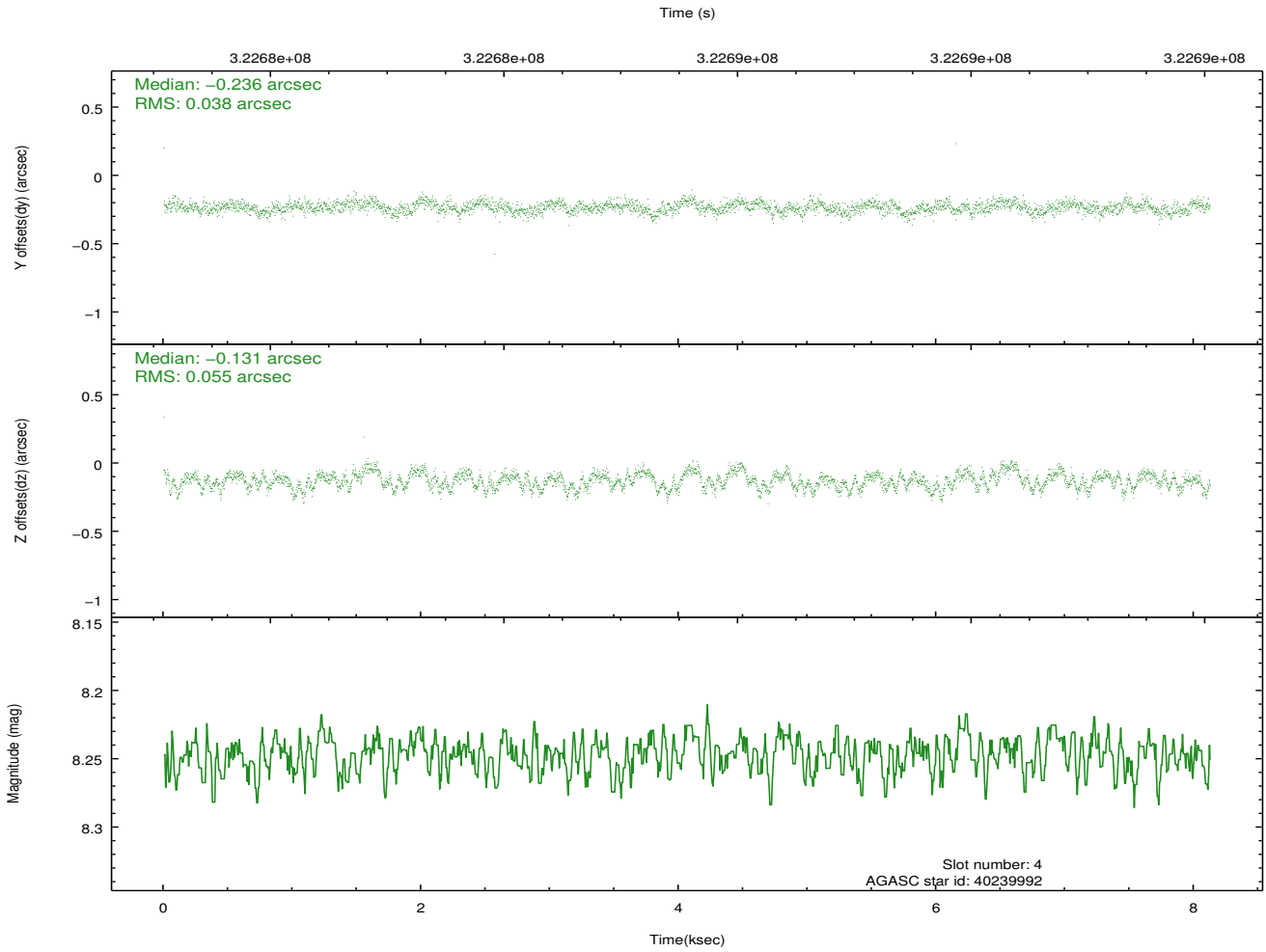
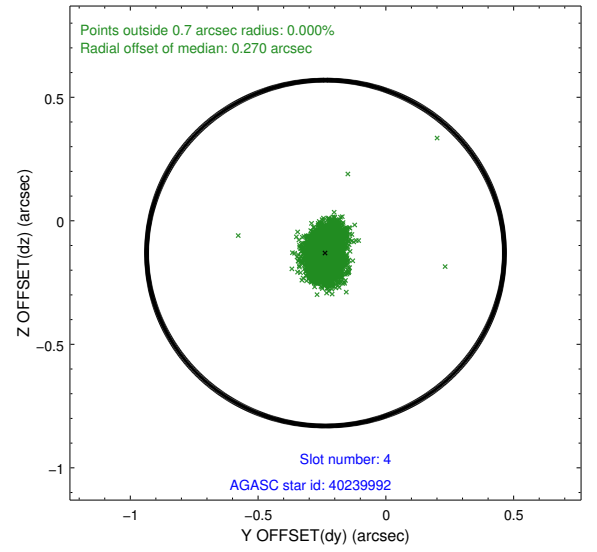
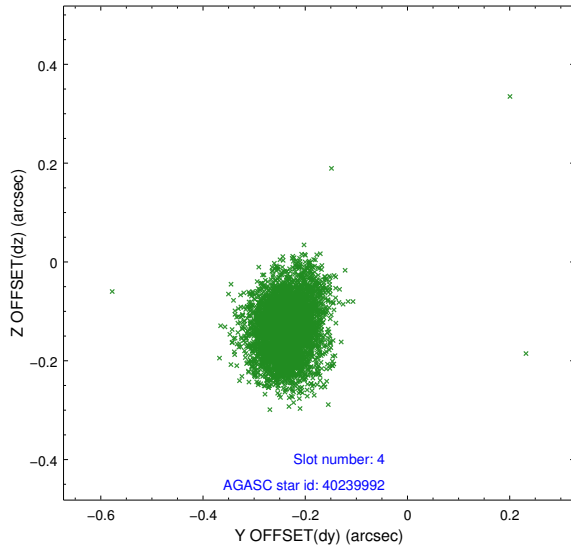
slot	status	id	mag	n_pts	med_dy	med_dz	dr1	dr2	ra	dec	mean_y	mean_z
0	FID	ACIS-S-2	7.09	1982	-0.068	-0.018	0.007	0.012	0.000000	0.000000	-766.84	-1736.85
1	FID	ACIS-S-4	7.18	1981	0.187	0.038	0.006	0.011	0.000000	0.000000	2146.35	171.01
2	FID	ACIS-S-5	7.22	1982	-0.150	-0.011	0.006	0.011	0.000000	0.000000	-1818.91	165.37
3	GUIDE	40239752	10.05	3950	-0.152	-0.049	0.173	0.279	202.780759	2.351969	1526.97	1416.83
4	GUIDE	40239992	8.25	3965	-0.236	-0.131	0.069	0.115	203.173767	2.065310	284.92	183.61
5	GUIDE	40240312	9.09	3954	0.077	-0.040	0.087	0.141	202.986645	1.720279	-835.88	1044.55
6	GUIDE	40241232	10.10	3953	0.128	-0.016	0.164	0.280	202.945605	1.531524	-1483.58	1297.64
7	GUIDE	40243168	9.75	3959	0.186	0.235	0.137	0.222	203.794524	1.731987	-1252.07	-1832.81

## 2.4 Star Slots

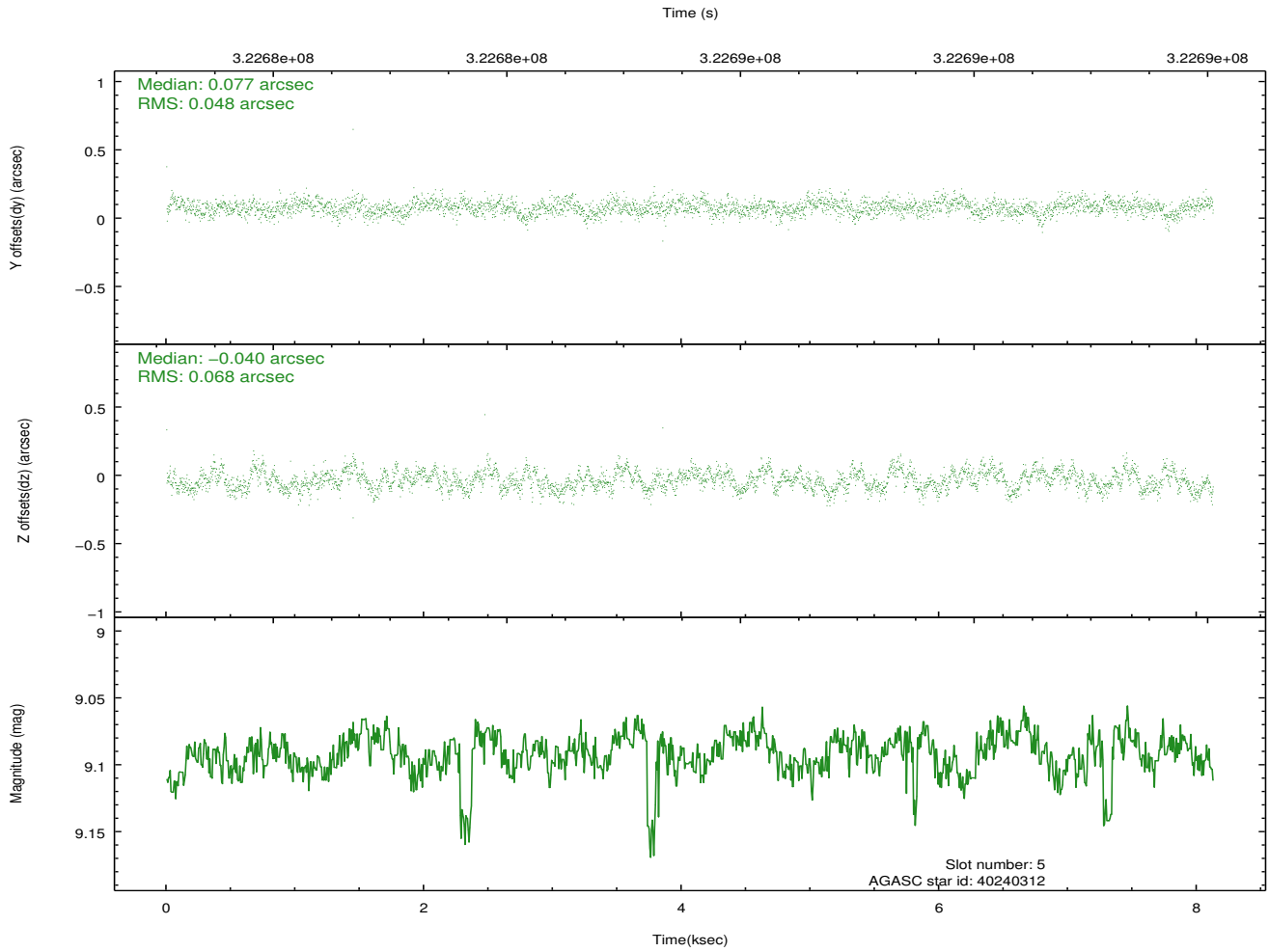
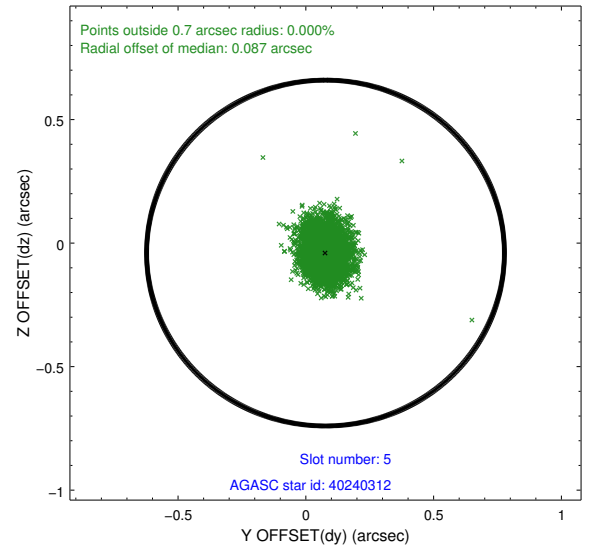
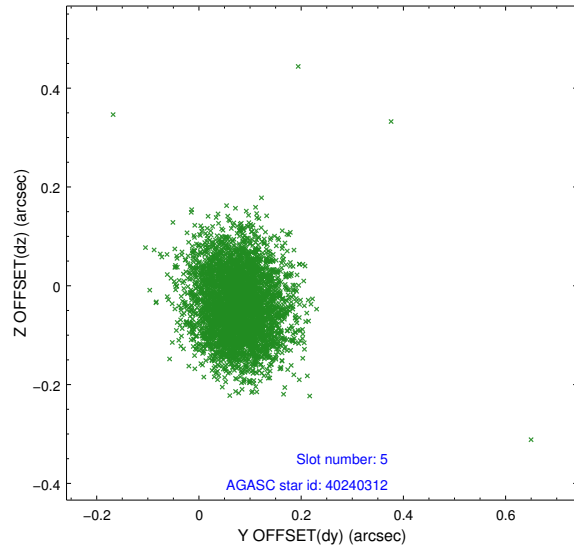
### 2.4.1 Slot 3



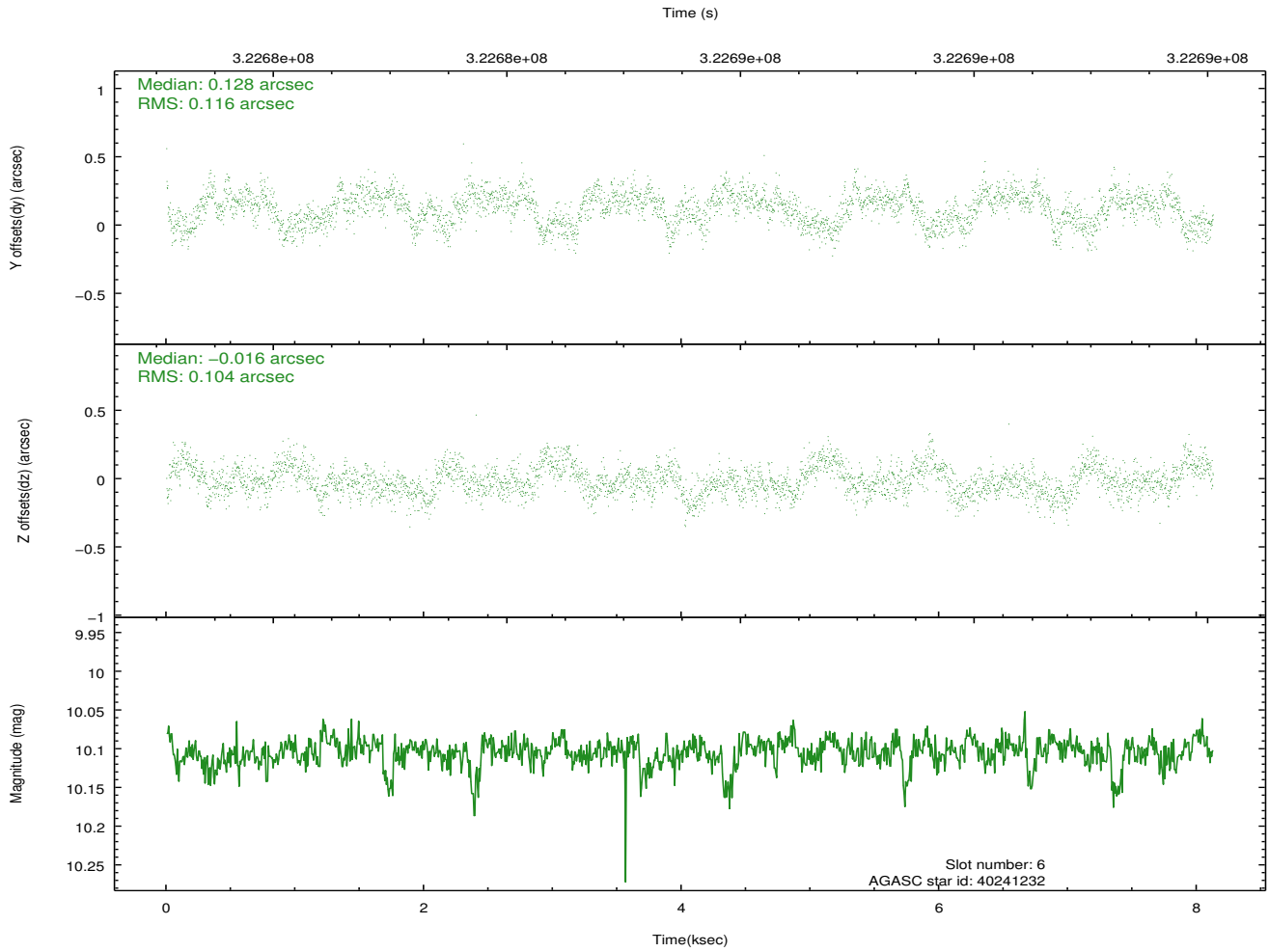
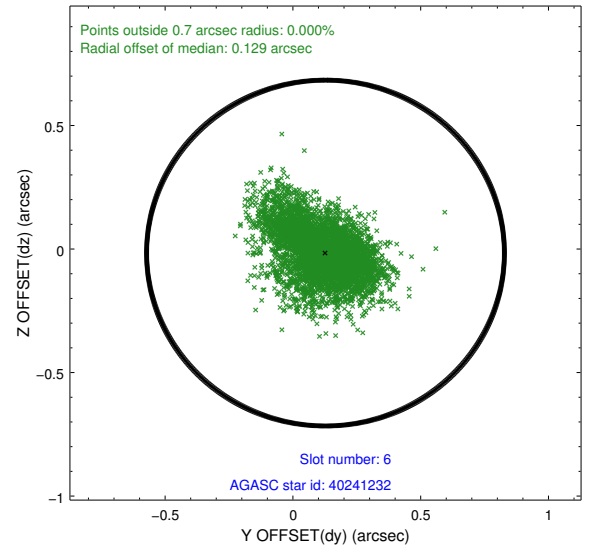
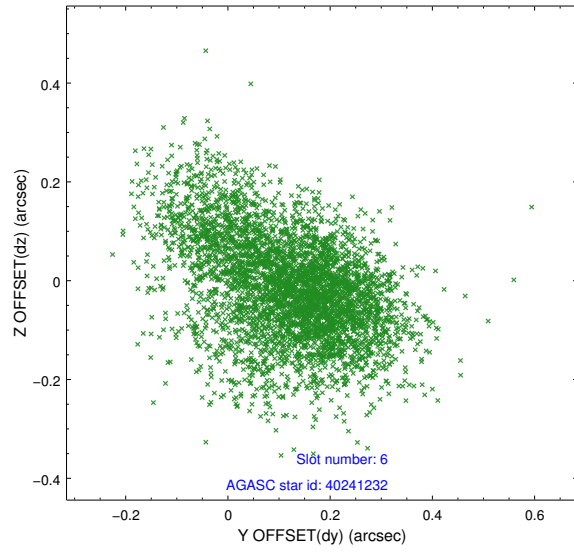
## 2.4.2 Slot 4



### 2.4.3 Slot 5

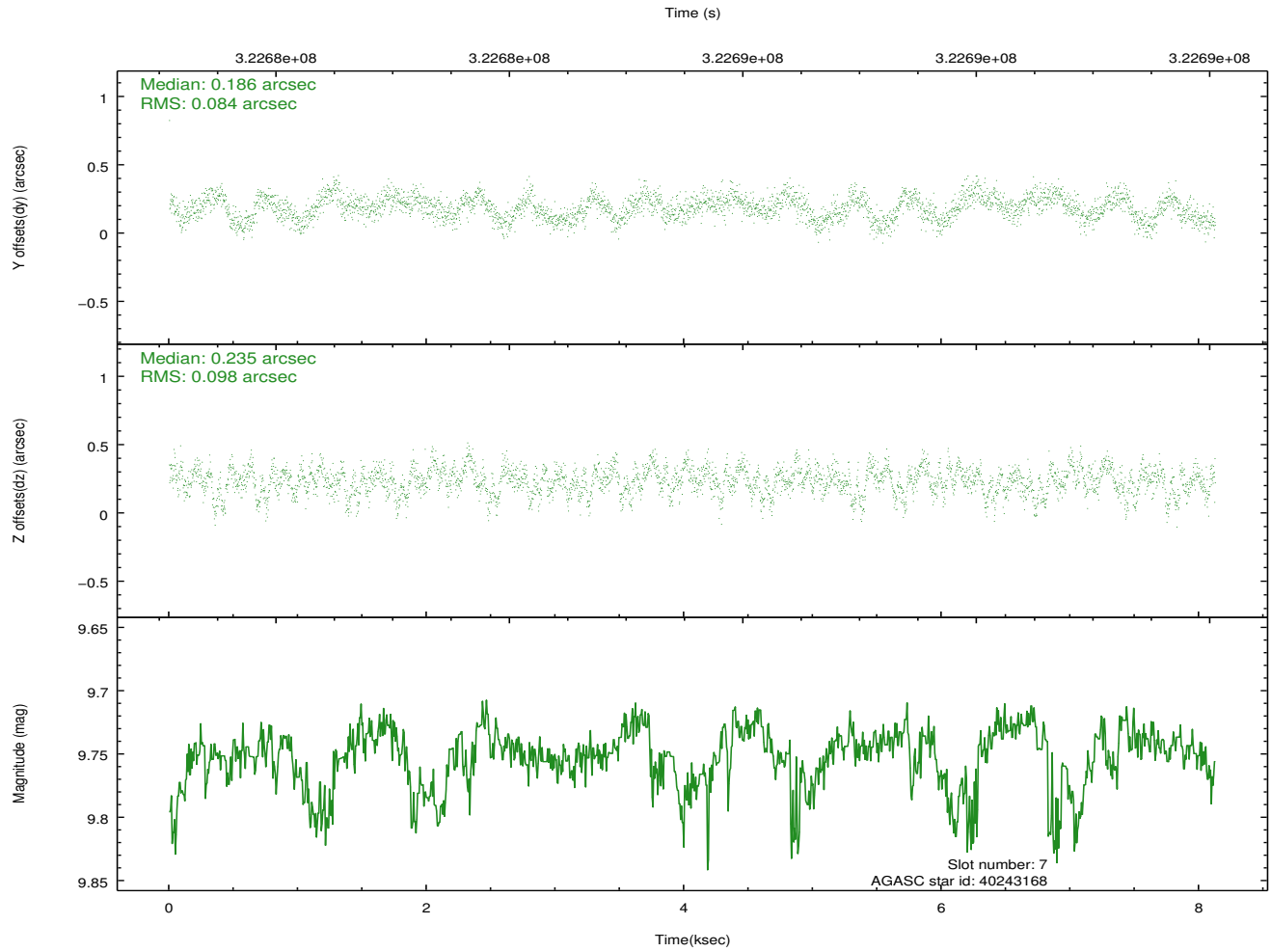
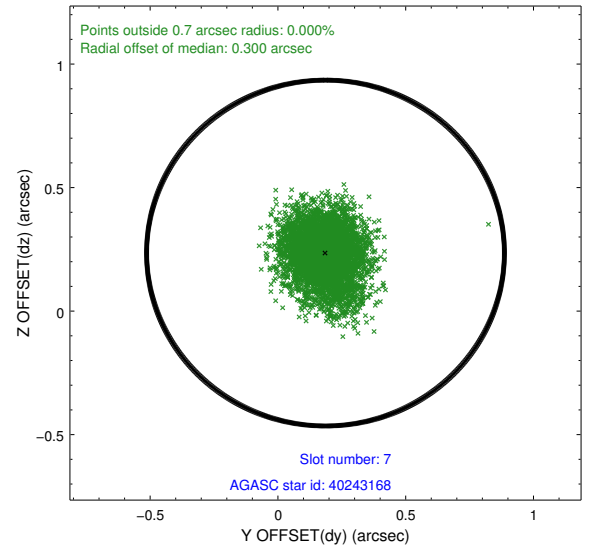
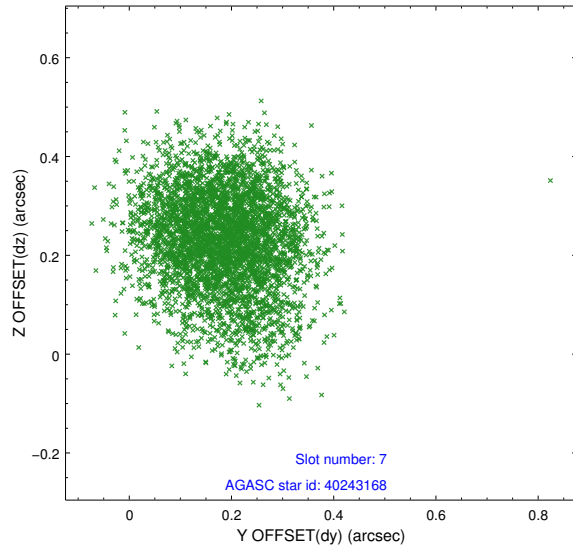


## 2.4.4 Slot 6



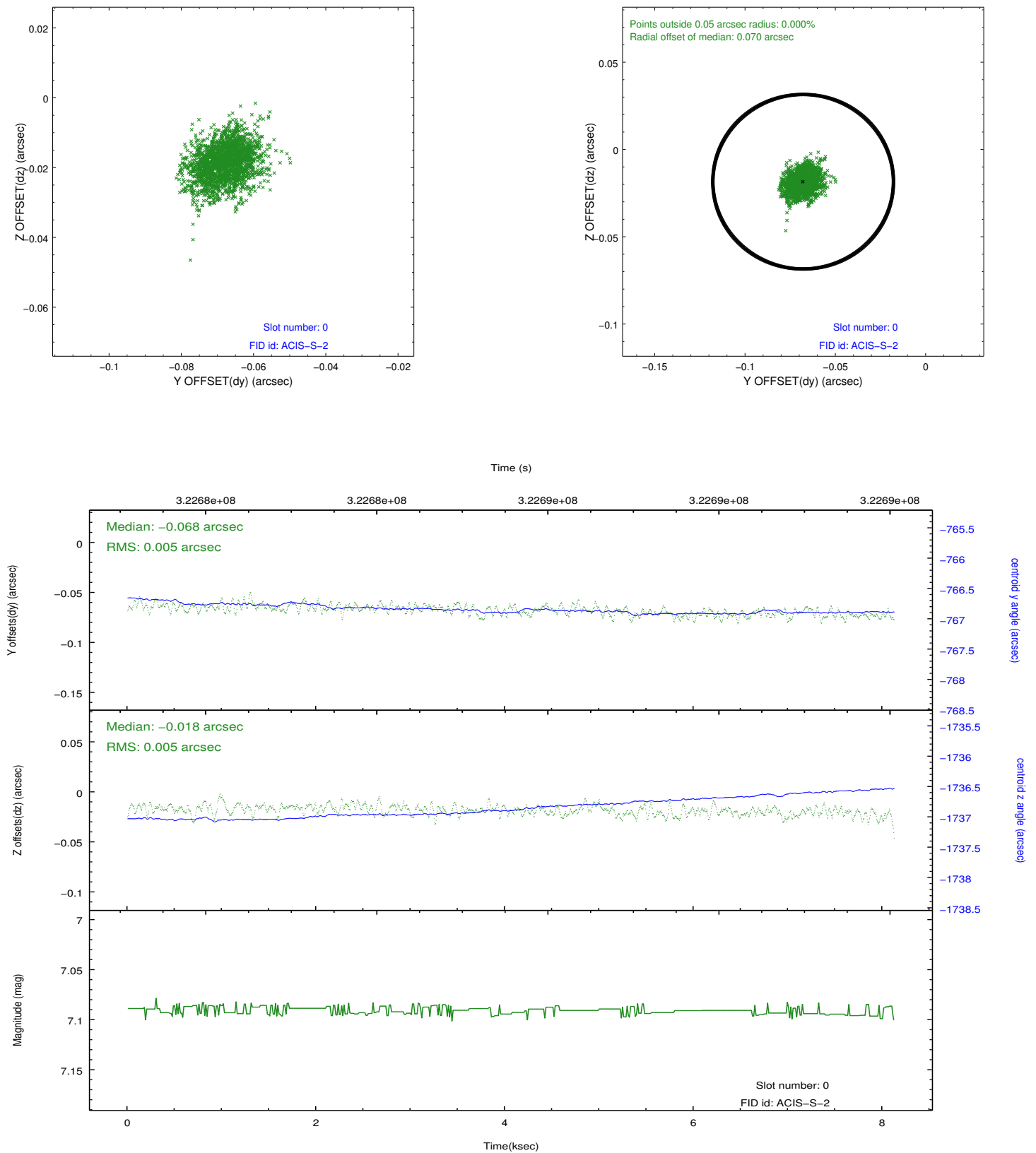


## 2.4.5 Slot 7

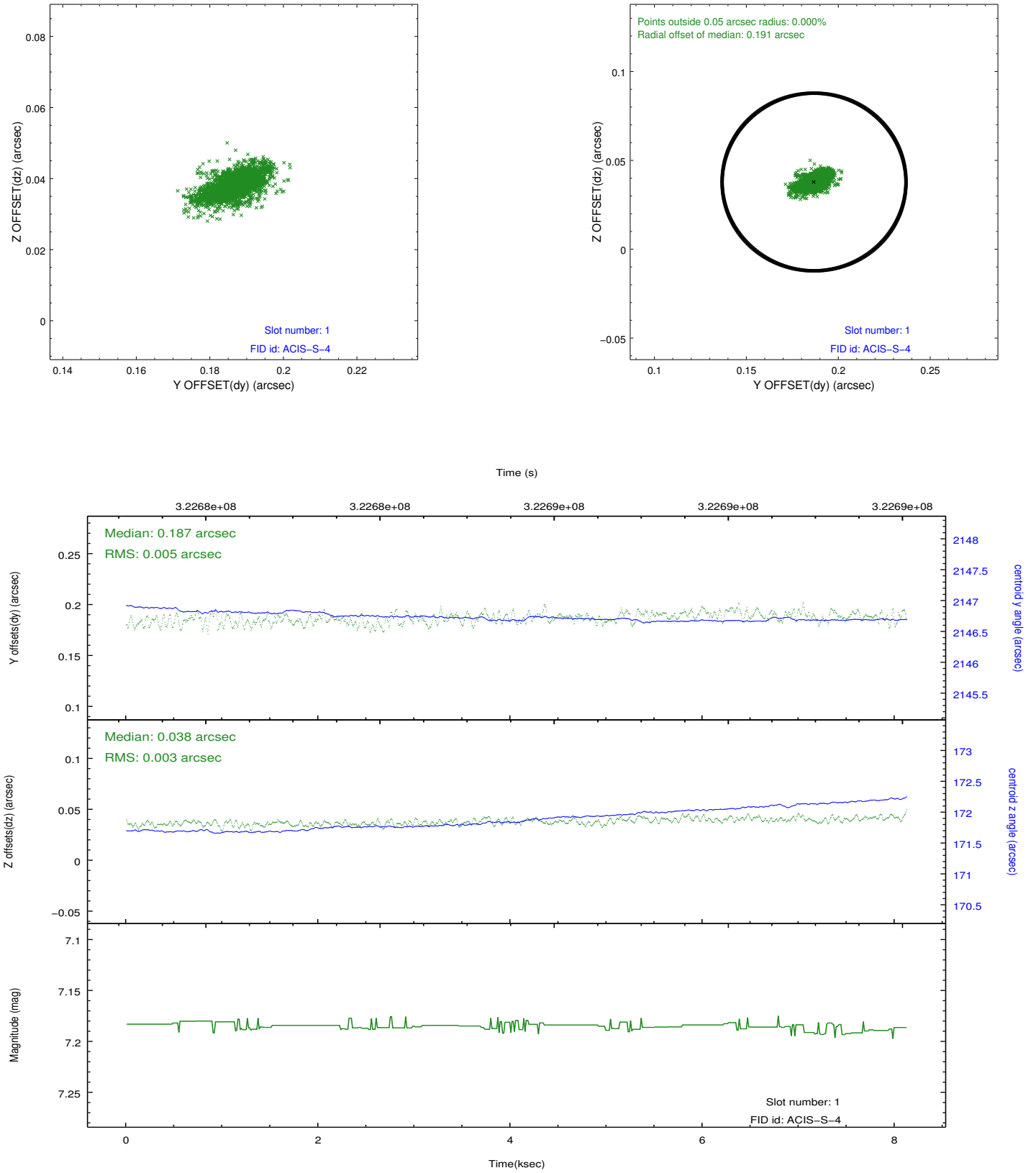


## 2.5 FID Slots

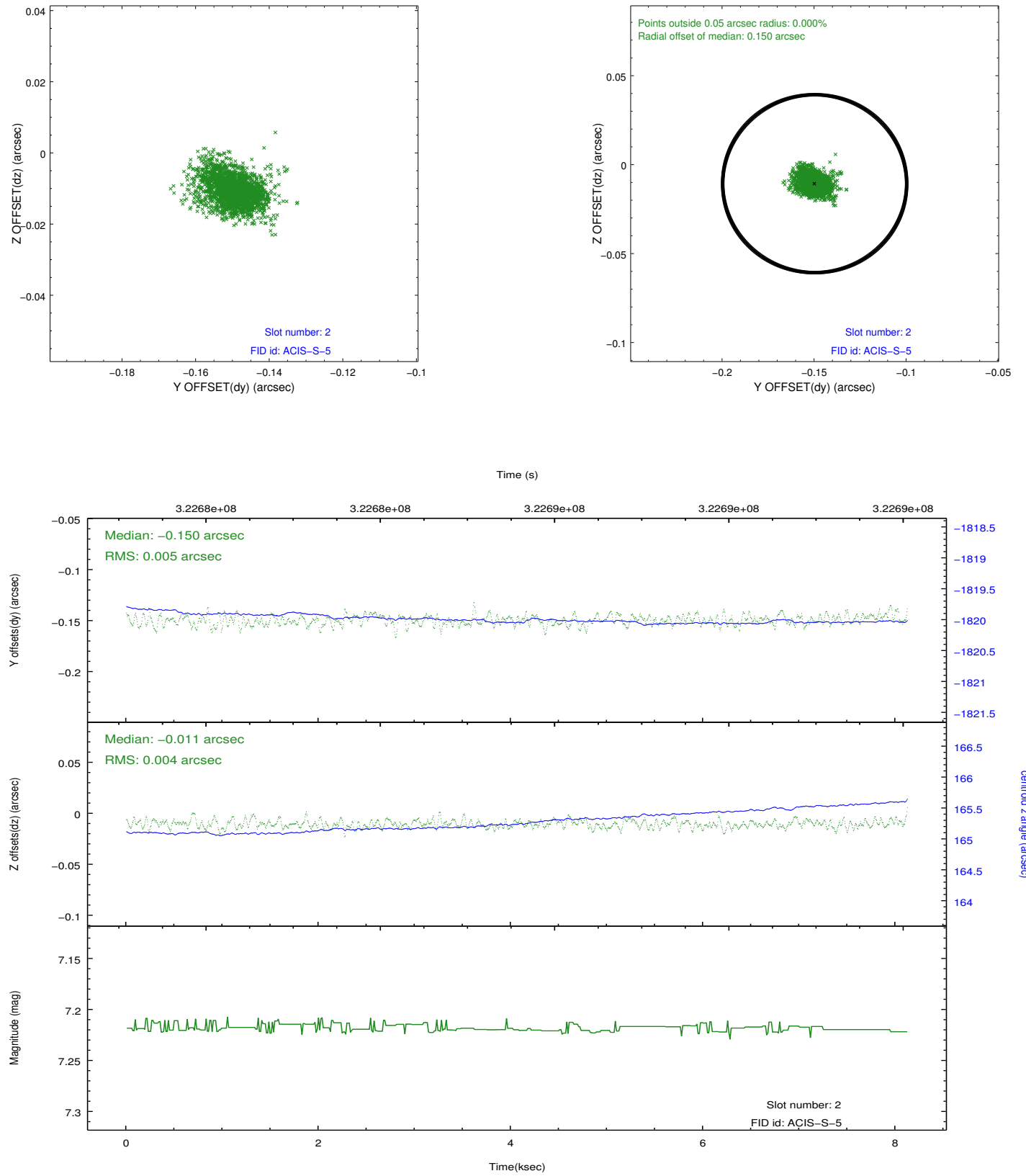
### 2.5.1 Slot 0



## 2.5.2 Slot 1



### 2.5.3 Slot 2



## A Summary

### A.1 Status

V&V Scientist	Jen Lauer
V&V Date (YYYY-MM-DD)	2012.05.14
V&V Edition	1
V&V Disposition and Status	OK
V&V Charge Time	8.12200006

### A.2 Comments