

V&V Reference Report

L2 ASCDS Version : 8.4.4

Observation 7909 - L2 Version 3
Chandra X-Ray Center

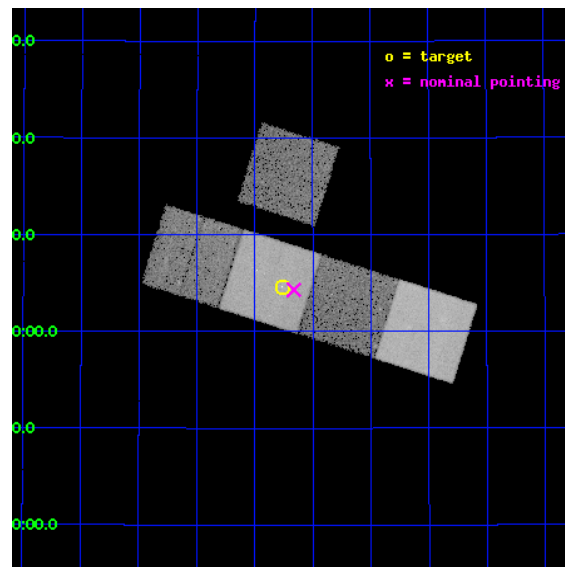
L2 Processing Date : Apr 20 2012

Contents

1	Front	2
2	OBI	3
2.1	OBI	3
2.1.1	Images	3
2.1.2	Bias	3
2.1.3	Parameters	4
2.1.4	Events	4
2.2	Compared Parameters	5
2.3	Aspect	6
2.4	Star Slots	9
2.4.1	Slot 3	9
2.4.2	Slot 4	10
2.4.3	Slot 5	11
2.4.4	Slot 6	12
2.4.5	Slot 7	13
2.5	FID Slots	14
2.5.1	Slot 0	14
2.5.2	Slot 1	15
2.5.3	Slot 2	16
A	Summary	17
A.1	Status	17
A.2	Comments	17

1 Front

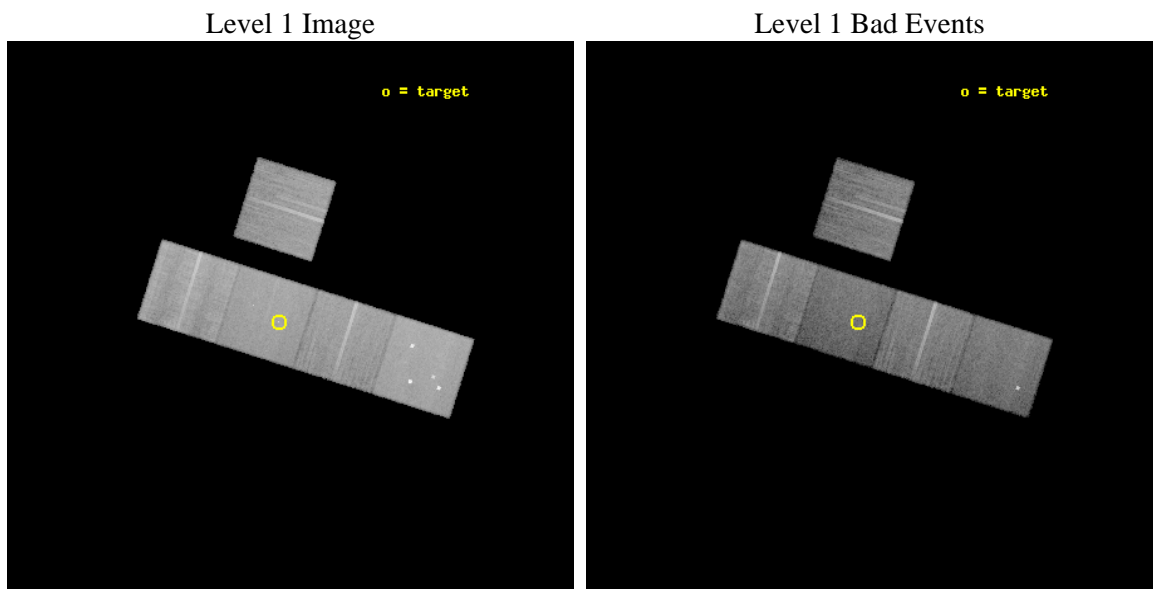
seq_num	800627	Sequence number
obs_id	7909	Observation id
title	A search for clusters around luminous radio-quiet FRI quasars	Prop
observer	Professor Andrew Fabian	Principal investigator
object	7C1023+3604	Source name
dtcycle	0	
cycle	P	events from which exps? Prim/Second/Both
ra_targ	155.815833	Observer's specified target RA [deg]
dec_targ	36.0765	Observer's specified target Dec [deg]
ra_nom	155.79071073336	Nominal RA [deg]
dec_nom	36.071824816437	Nominal Dec [deg]
roll_nom	197.54916937527	Nominal Roll [deg]
revision	3	Processing version of data
ontime	20134.500154853	Sum of GTIs [s]
livetime	19871.428087526	Livetime [s]
ontime3	20118.795233309	Sum of GTIs [s]
ontime5	20134.500154853	Sum of GTIs [s]
ontime6	20121.93628335	Sum of GTIs [s]
ontime7	20134.500154853	Sum of GTIs [s]
ontime8	20128.21815443	Sum of GTIs [s]
l2events	220803	Number of level 2 events



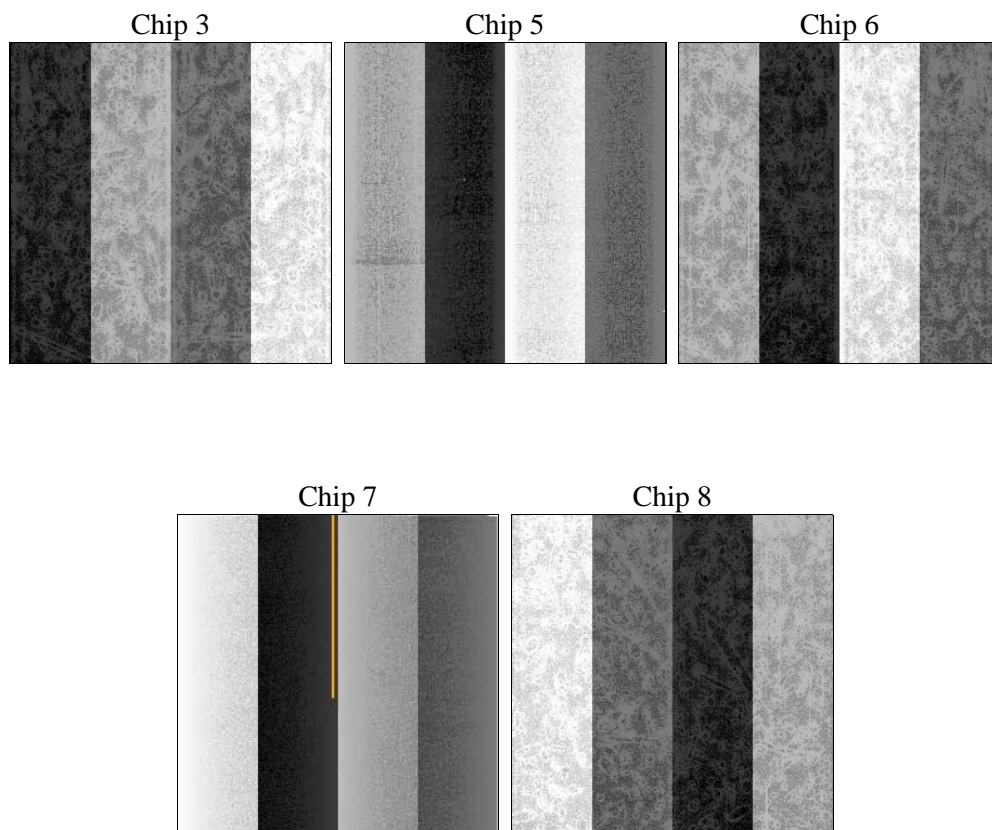
2 OBI

2.1 OBI

2.1.1 Images



2.1.2 Bias



2.1.3 Parameters

obi_num	1	Obi number	sched_exp_time	20000.000000	[s] Scheduled observation exposure time
ascdsver	8.4.4	Processing system revision	ontime	20134.500154853	Sum of GTIs [s]
caldbver	4.4.9	 	ontime3	20118.795233309	Sum of GTIs [s]
date	2012-04-21T01:14:51	Date and time of file creation	ontime5	20134.500154853	Sum of GTIs [s]
revision	3	Processing version of data	ontime6	20121.93628335	Sum of GTIs [s]
			ontime7	20134.500154853	Sum of GTIs [s]
			ontime8	20128.21815443	Sum of GTIs [s]
			l1events	949483	Number of level 1 events

2.1.4 Events

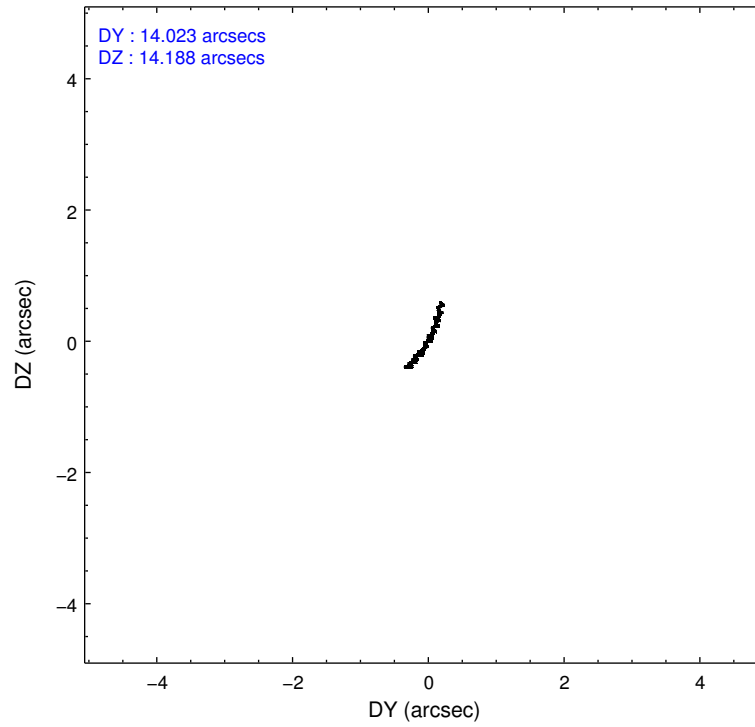
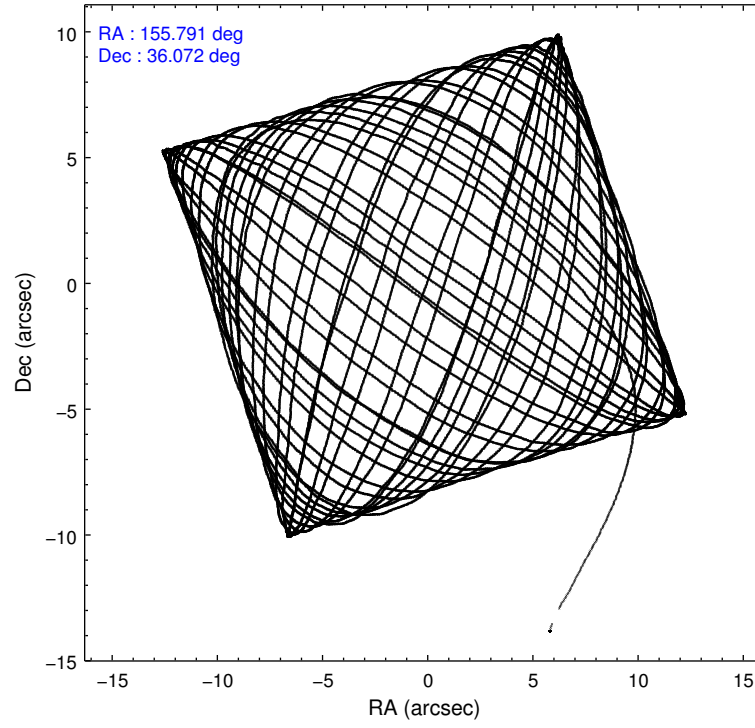
	ccd 3	ccd 5	ccd 6	ccd 7	ccd 8
level 1 events	161971	235679	163670	179666	208497
rejected events	147760	118624	147650	100499	160864
rejected %	91%	50%	90%	55%	77%

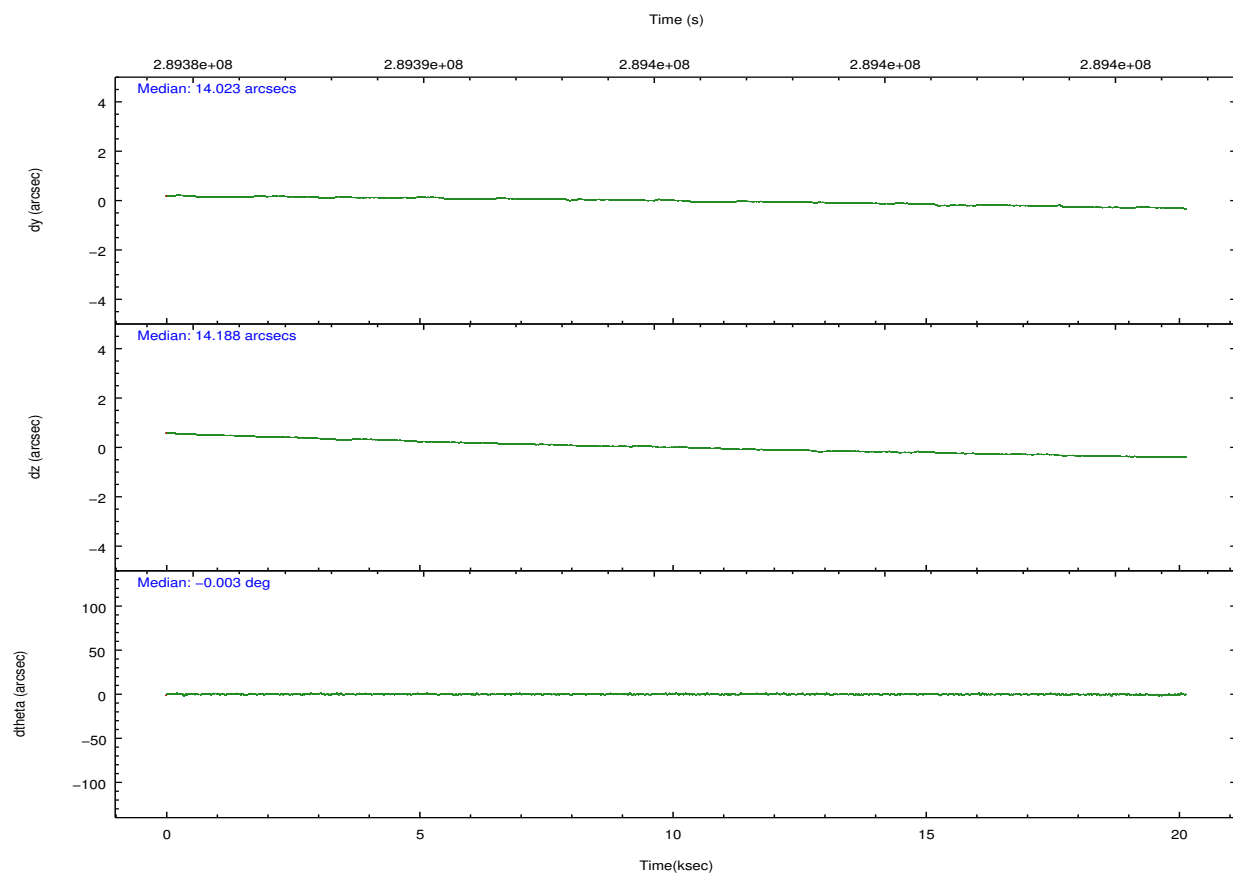
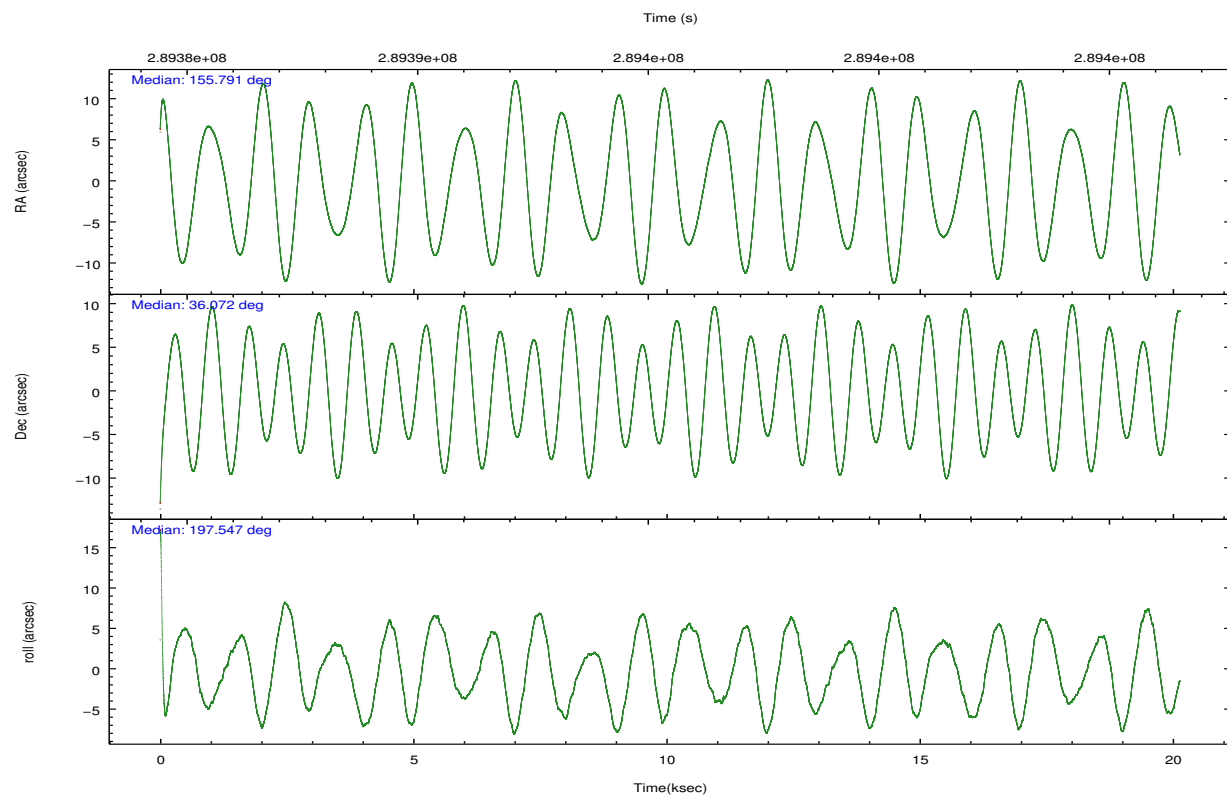
	ccd 3	ccd 5	ccd 6	ccd 7	ccd 8
grade 0 events	4896	20366	5799	7877	14879
	3%	8%	3%	4%	7%
grade 1 events	87	371	81	230	163
	0%	0%	0%	0%	0%
grade 2 events	3255	34052	3595	16480	11481
	2%	14%	2%	9%	5%
grade 3 events	1805	4637	1845	7352	5055
	1%	1%	1%	4%	2%
grade 4 events	1713	4382	1848	7579	4571
	1%	1%	1%	4%	2%
grade 5 events	6267	17414	6641	18761	9355
	3%	7%	4%	10%	4%
grade 6 events	3031	57413	3503	42614	13242
	1%	24%	2%	23%	6%
grade 7 events	140917	97044	140358	78773	149751
	87%	41%	85%	43%	71%

2.2 Compared Parameters

Parameter	Planned	Actual	Parameter	Planned	Actual
Instrument	ACIS	ACIS	Obspar format version number	7	7
Detector	ACIS-35678	ACIS-35678	Obspar file type	PREDICTED	ACTUAL
Grating	NONE	NONE	Obspar update status	NONE	UPDATED
Data mode	VFAINT	VFAINT	Number of optional ACIS chips dropped	0	0
Observation mode	POINTING	POINTING	On-chip summing requested	N	N
[deg] Pointing RA	155.813188	155.790710733356	Subarray requested	NONE	NONE
[deg] Pointing Dec	36.092240	36.07182481643677	Alternating exposures requested	N	N
[deg] Pointing Roll	197.379282	197.5491693752708	[s] Primary exposure time	0.000000	3.1
[mm] SIM focus pos	-0.684267	-0.6828225247311905			
[mm] SIM defocus	0	0.001444936568705701			
[mm] SIM translation stage pos	-190.132523	-190.1425803651734			
[mm] SIM translation stage offset	0	0.01005778216563158			
[s] Observation start time (MET)	289385537.184000	289384224.24821			
Observation start date	2007-03-04T08:51:12	2007-03-04T08:30:24			
[s] Observation end time (MET)	289405537.184000	289406264.82426			
Observation end date	2007-03-04T14:24:32	2007-03-04T14:37:44			
Read mode	TIMED	TIMED			

2.3 Aspect



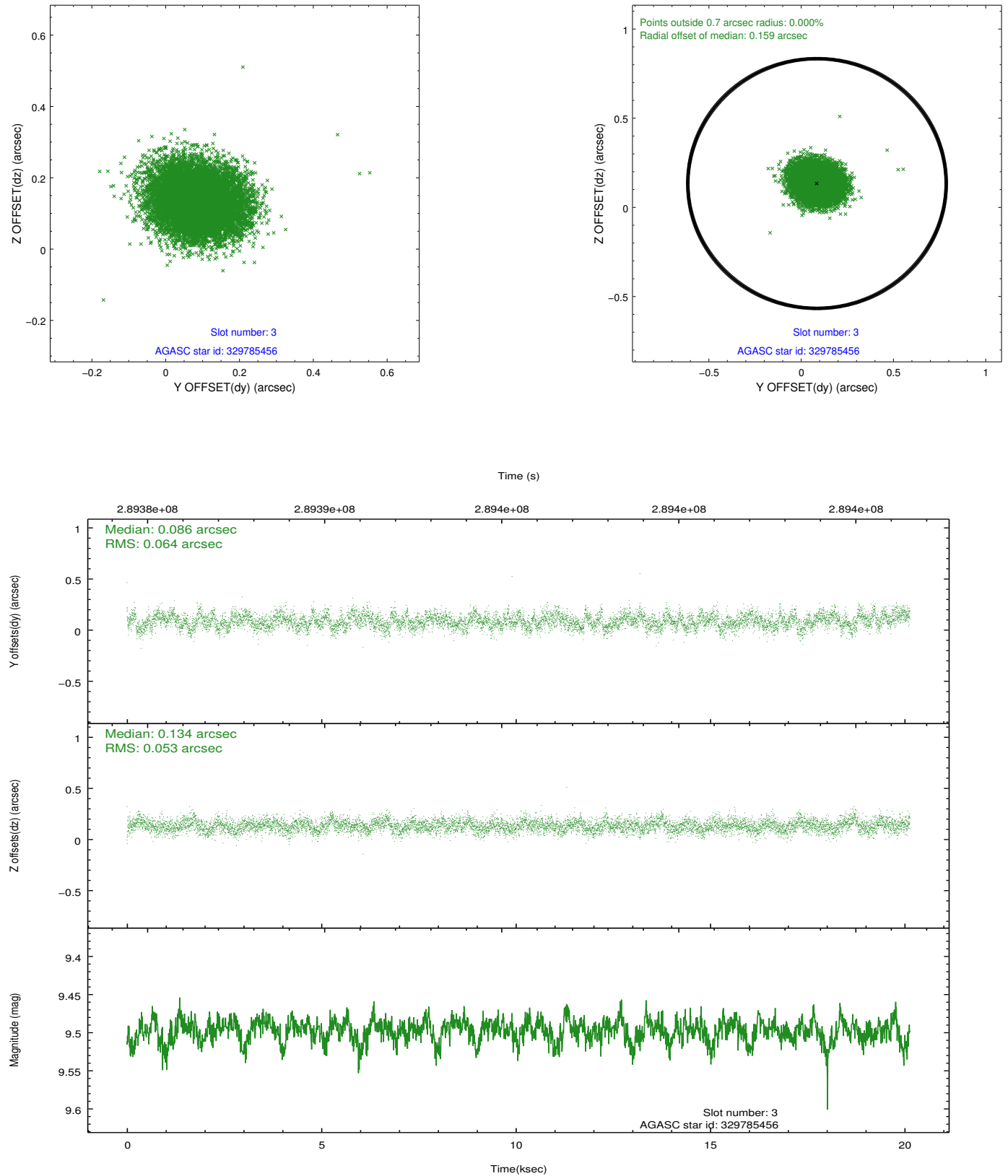


Slot Statistics

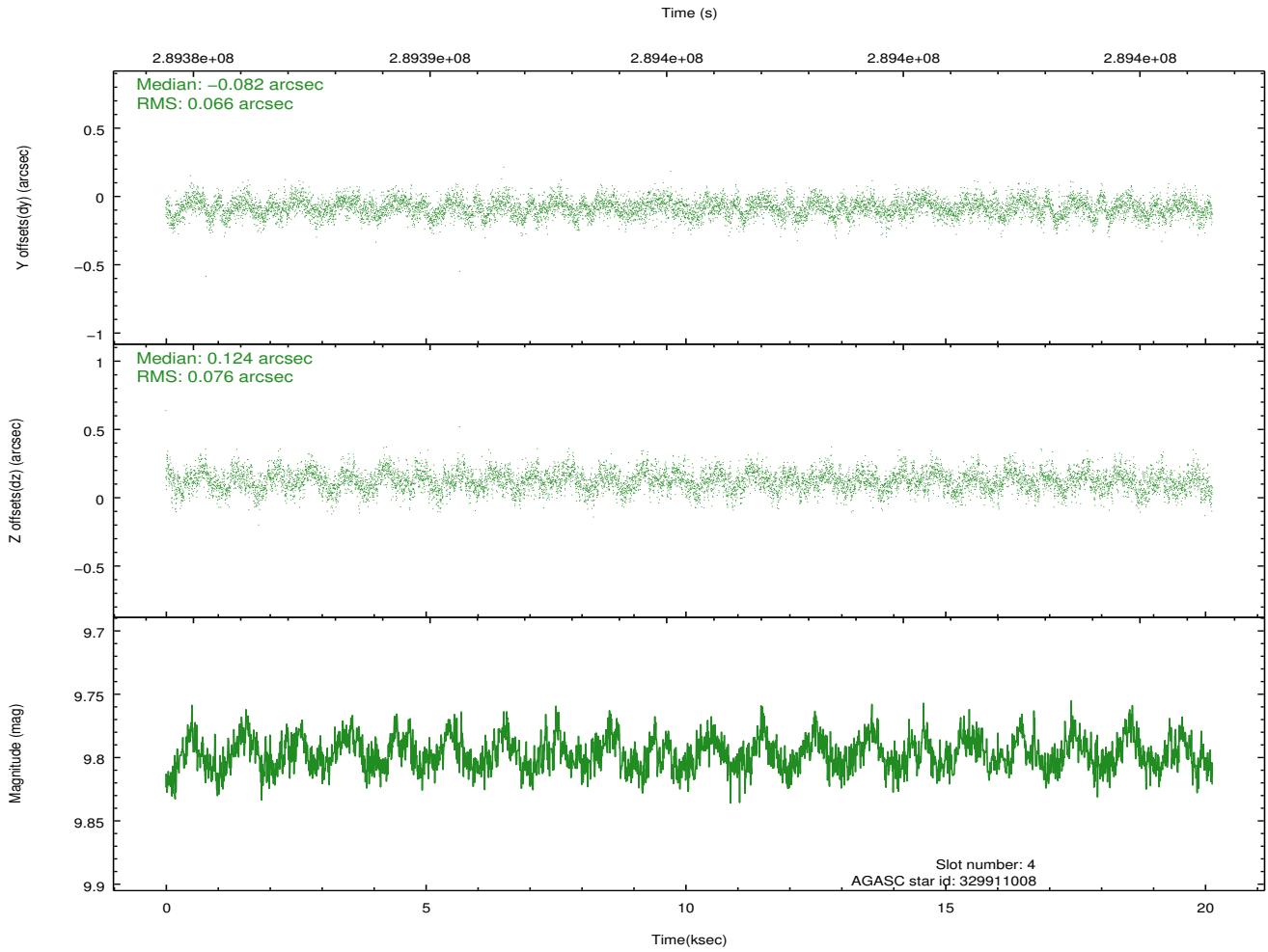
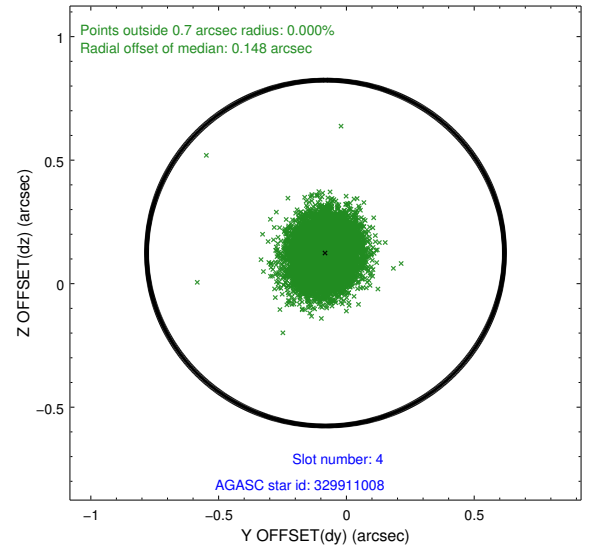
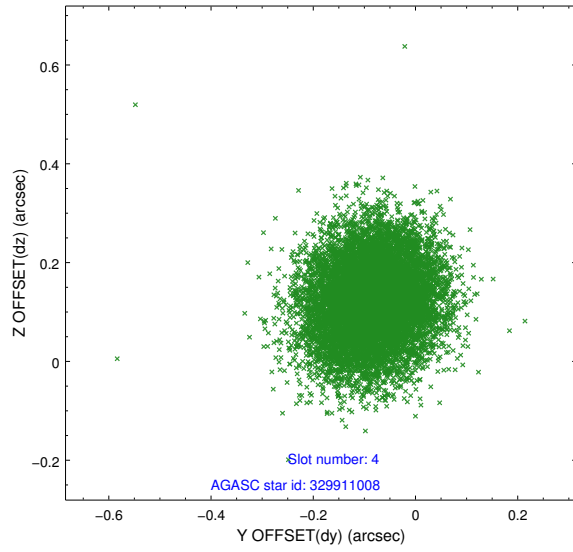
slot	status	id	mag	n_pts	med_dy	med_dz	dr1	dr2	ra	dec	mean_y	mean_z
0	FID	ACIS-S-2	7.10	4912	-0.116	-0.078	0.009	0.017	0.000000	0.000000	-767.07	-1735.58
1	FID	ACIS-S-4	7.20	4911	0.127	0.059	0.008	0.014	0.000000	0.000000	2146.38	172.81
2	FID	ACIS-S-6	7.34	4913	-0.039	0.027	0.007	0.013	0.000000	0.000000	395.25	810.40
3	GUIDE	329785456	9.50	9814	0.086	0.134	0.088	0.144	155.311938	35.550009	1983.27	1421.36
4	GUIDE	329911008	9.80	9807	-0.082	0.124	0.108	0.171	156.288418	36.835730	-2107.03	-2148.15
5	GUIDE	329912720	9.95	9806	0.109	-0.019	0.125	0.204	156.654433	35.894927	-2132.39	1400.64
6	GUIDE	329913256	9.72	9813	0.004	-0.008	0.104	0.170	156.479392	35.801500	-1545.68	1574.00
7	GUIDE	329917904	6.58	9822	-0.120	-0.228	0.069	0.113	156.377374	36.204555	-1686.20	99.41

2.4 Star Slots

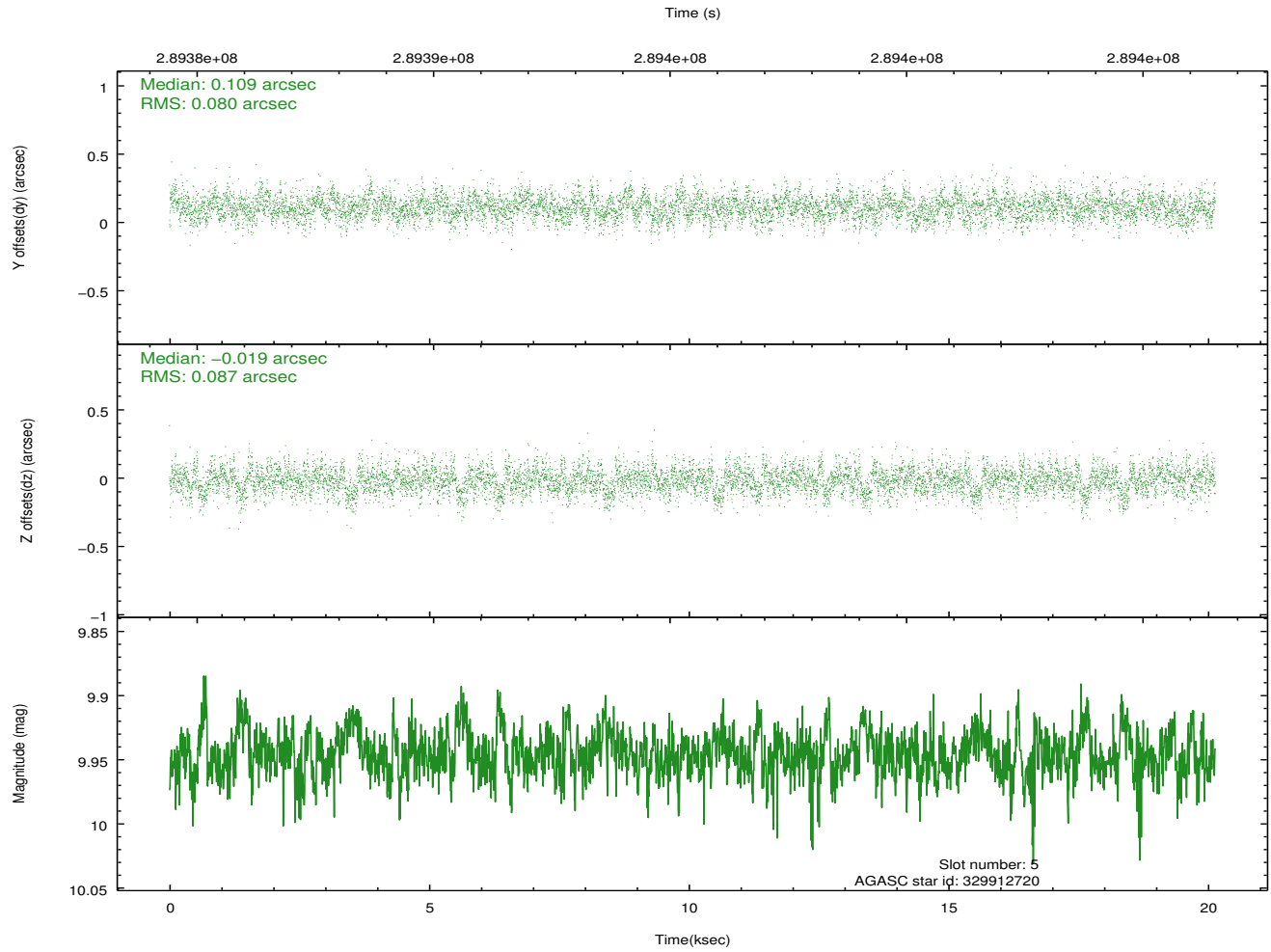
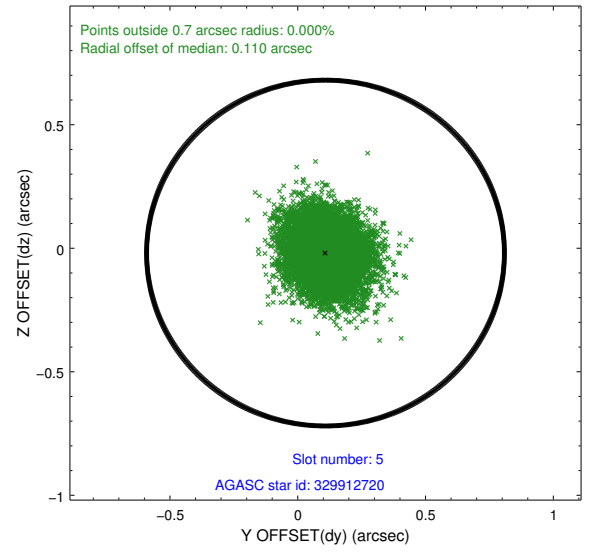
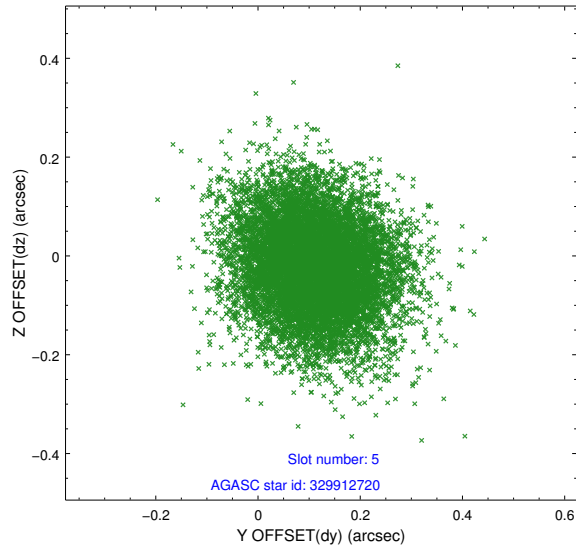
2.4.1 Slot 3



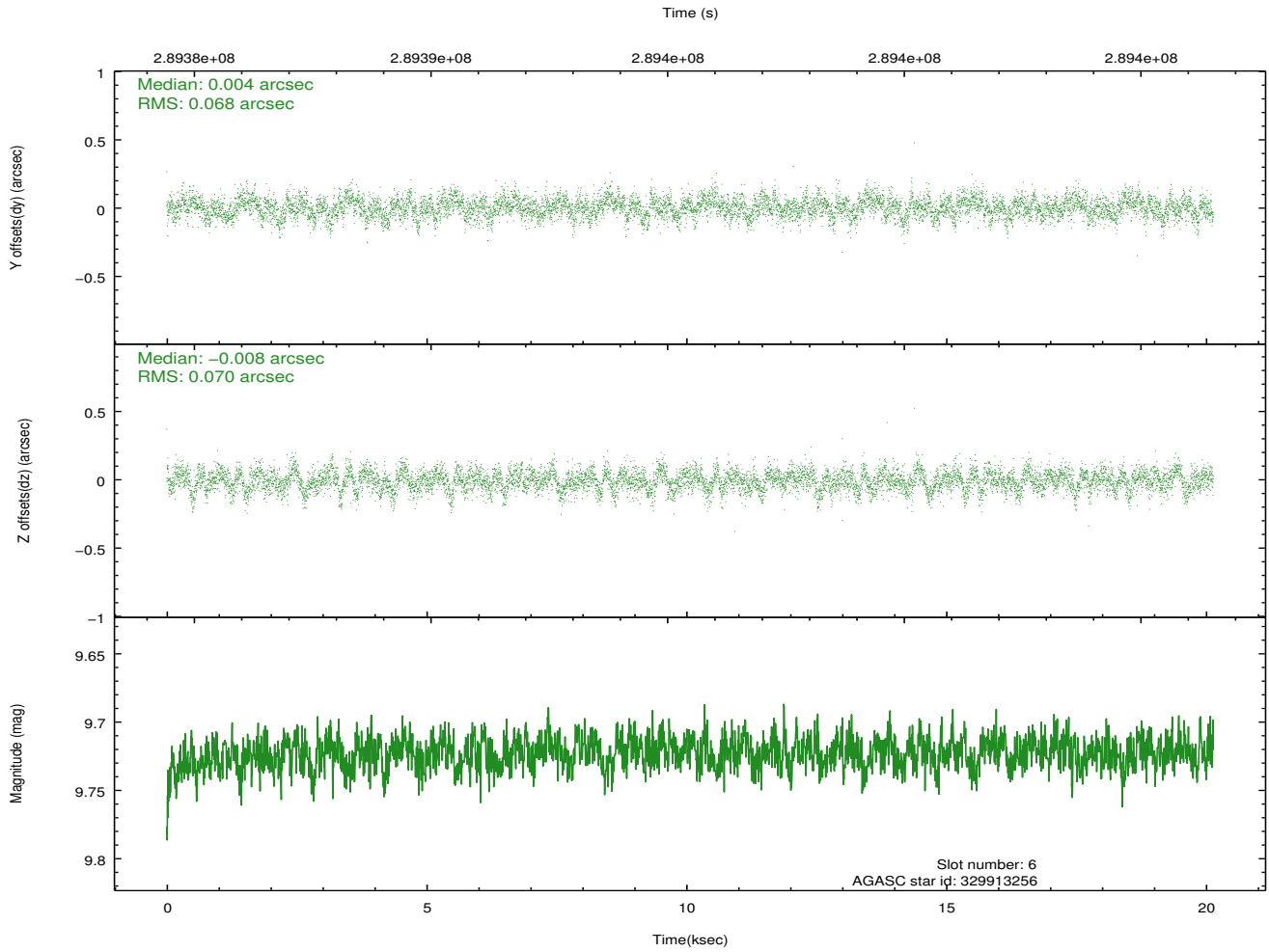
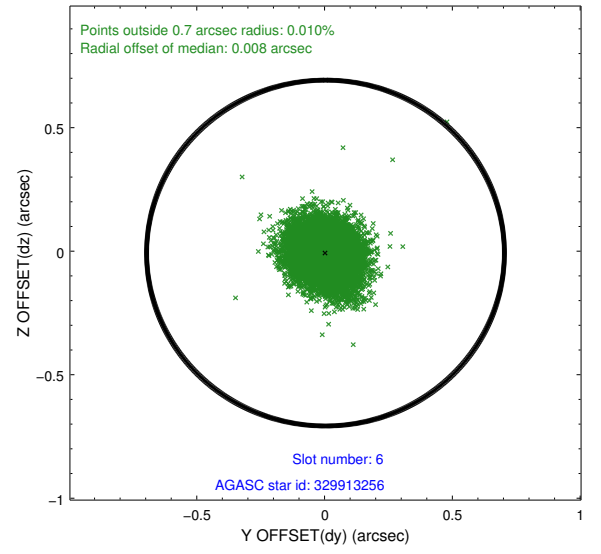
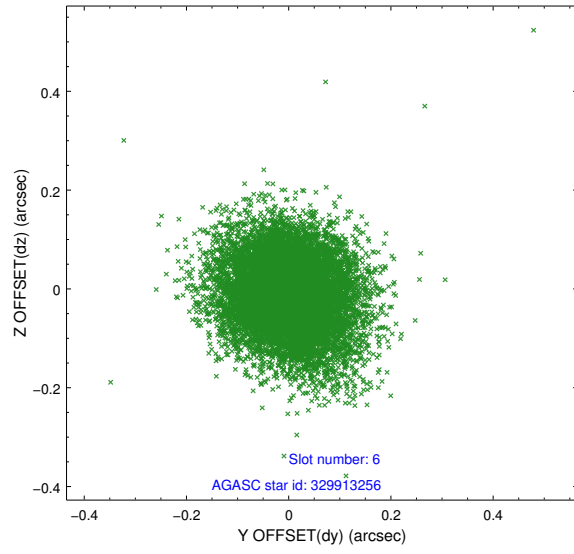
2.4.2 Slot 4



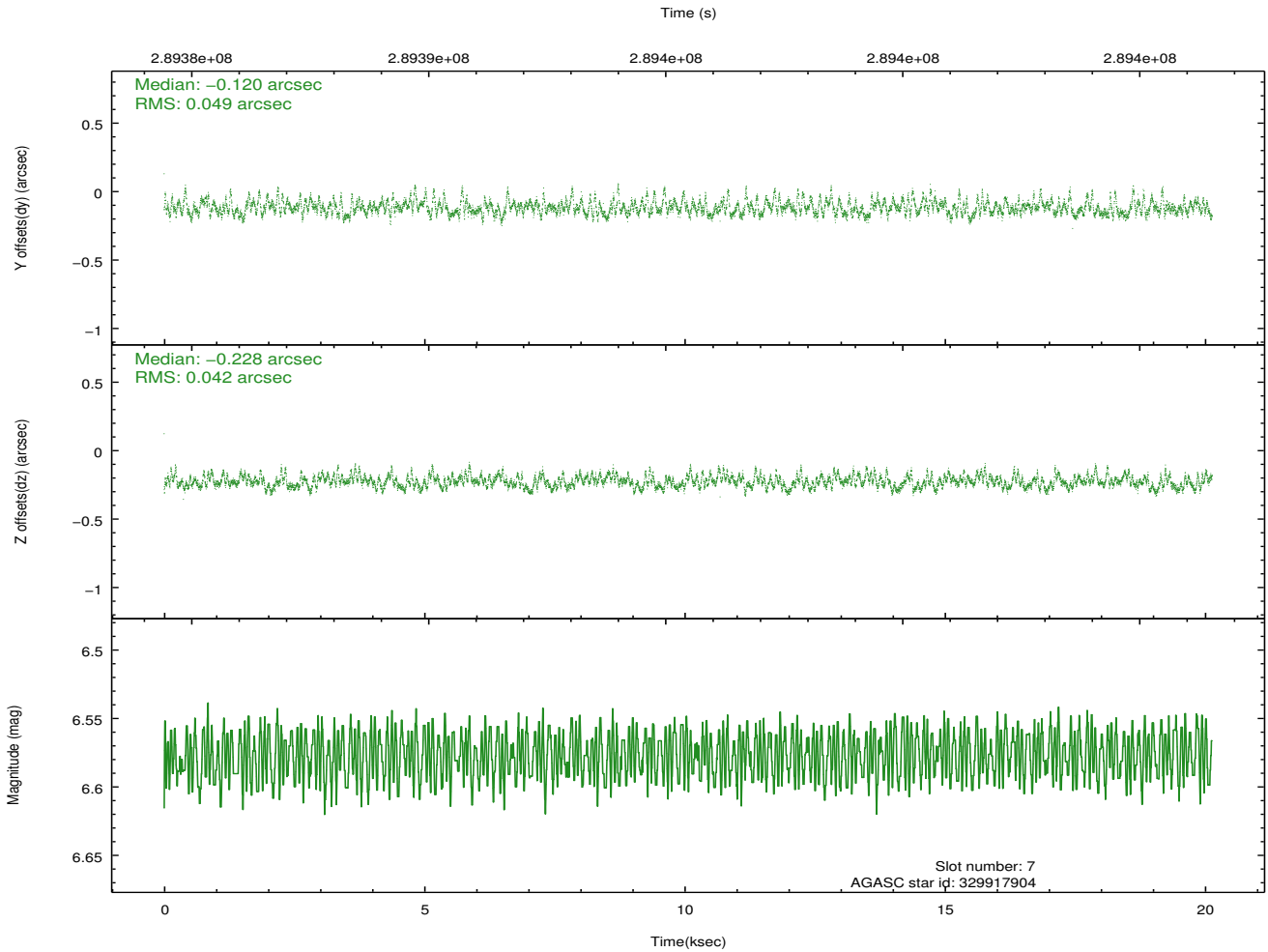
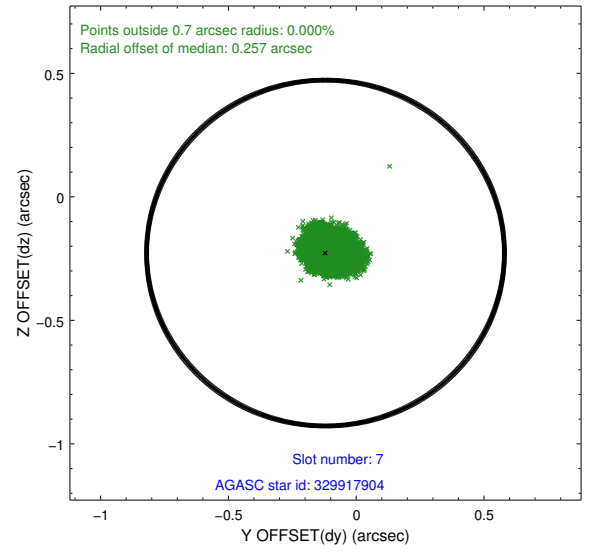
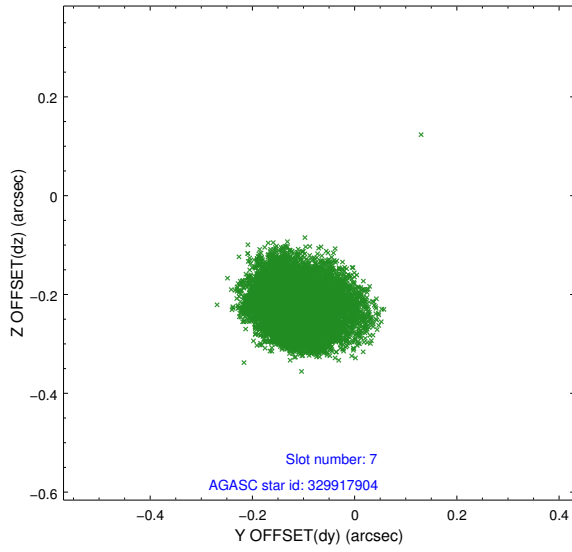
2.4.3 Slot 5



2.4.4 Slot 6

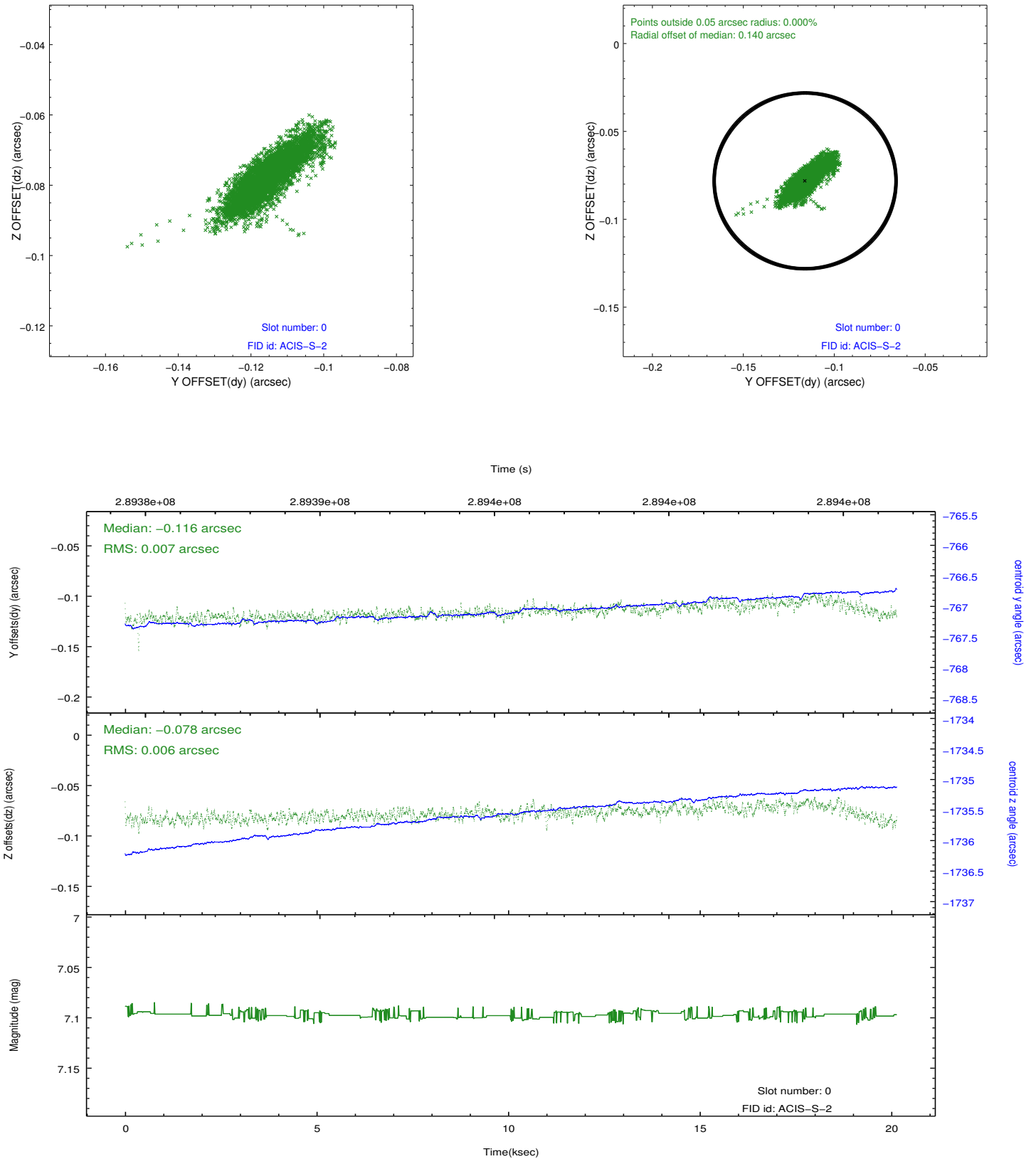


2.4.5 Slot 7

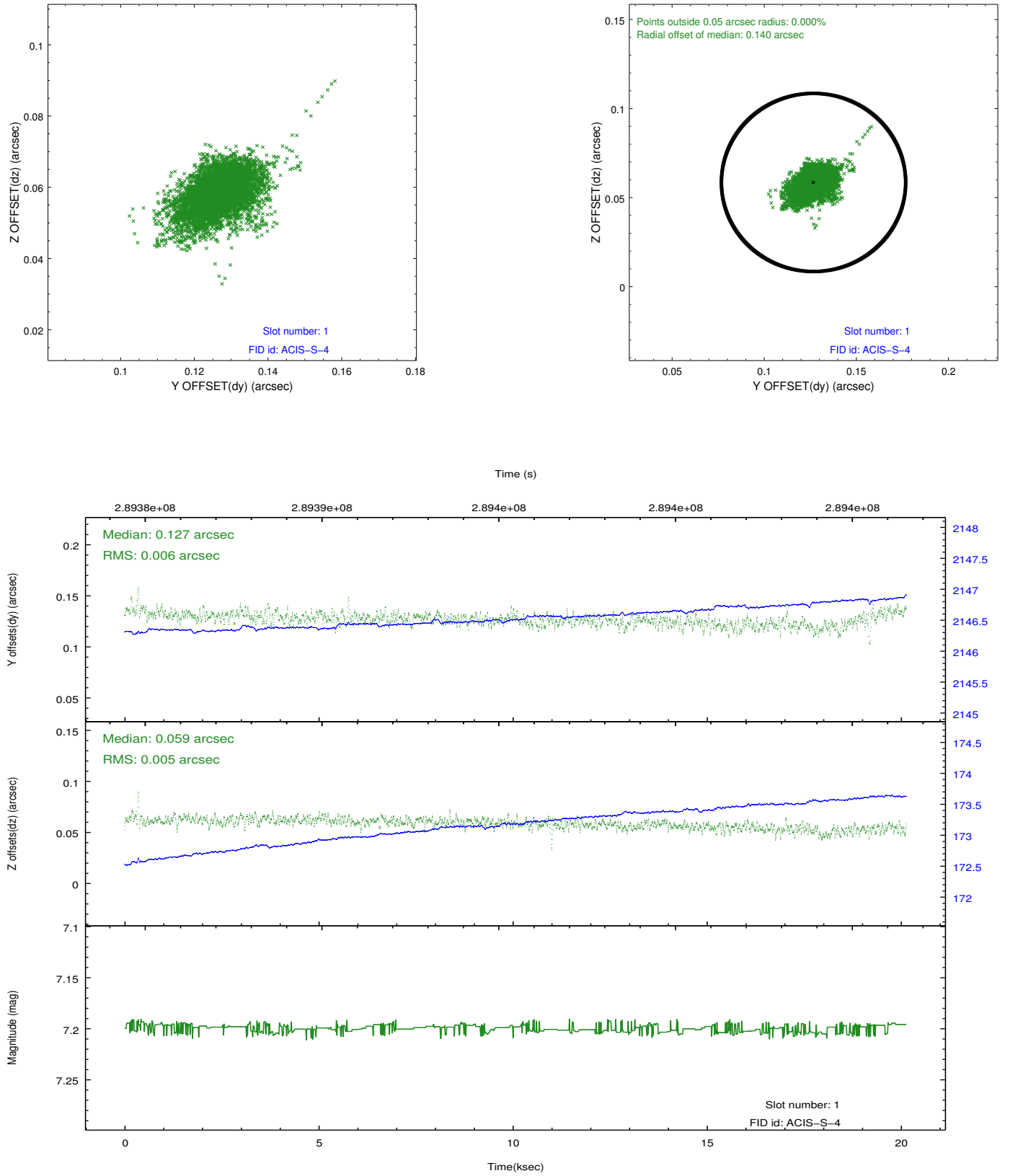


2.5 FID Slots

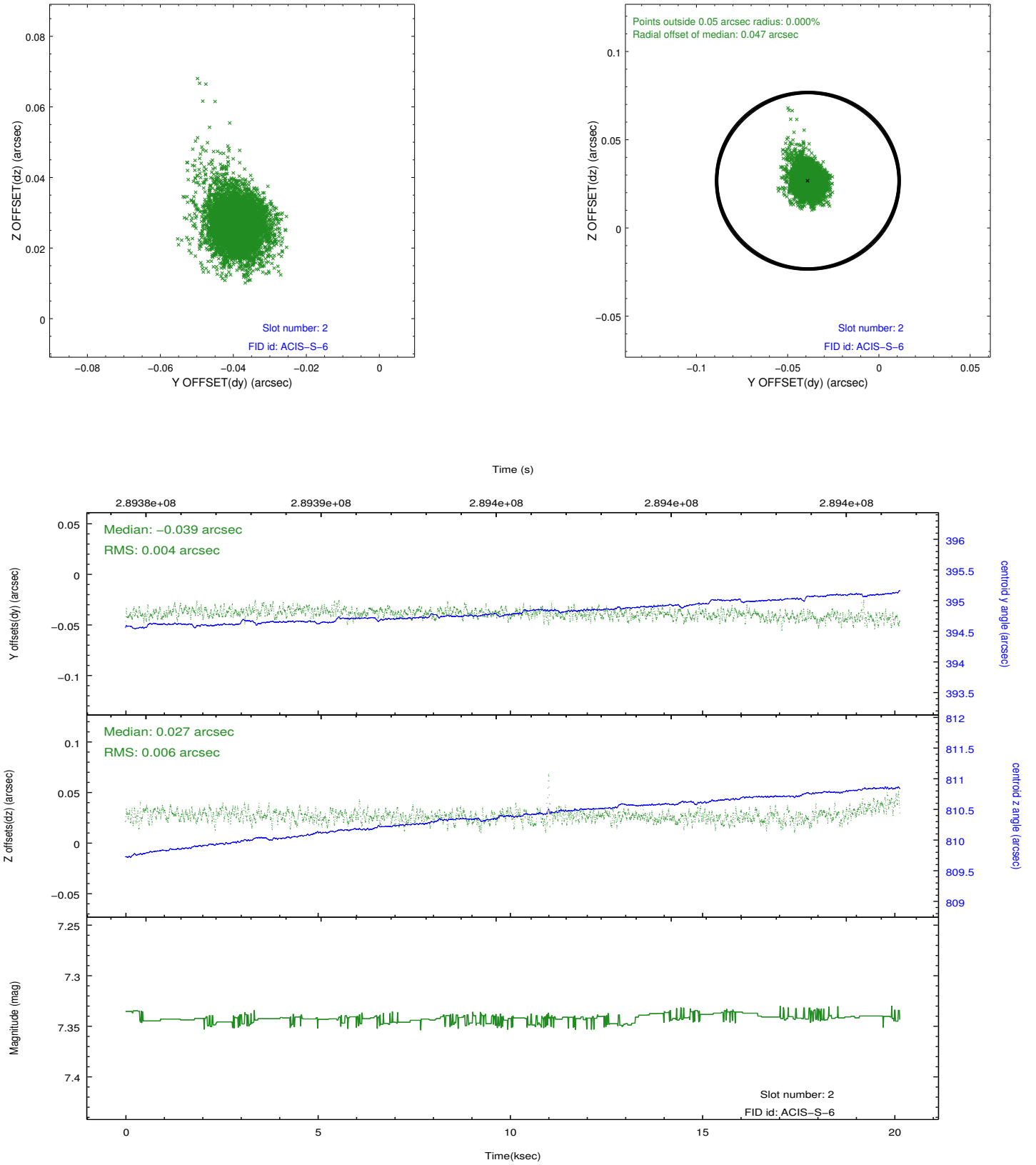
2.5.1 Slot 0



2.5.2 Slot 1



2.5.3 Slot 2



A Summary

A.1 Status

V&V Scientist	Beth Sundheim
V&V Date (YYYY-MM-DD)	2012.04.22
V&V Edition	1
V&V Disposition and Status	OK
V&V Charge Time	20.1345001

A.2 Comments