

V&V Reference Report

L2 ASCDS Version : 8.4.4

Observation 7749 - L2 Version 2
Chandra X-Ray Center

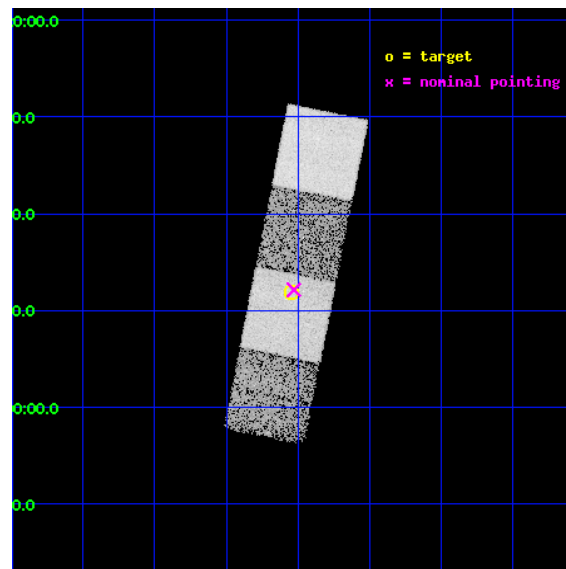
L2 Processing Date : Apr 30 2012

Contents

1	Front	2
2	OBI	3
2.1	OBI	3
2.1.1	Images	3
2.1.2	Bias	3
2.1.3	Parameters	4
2.1.4	Events	4
2.2	Compared Parameters	5
2.3	Aspect	6
2.4	Star Slots	9
2.4.1	Slot 3	9
2.4.2	Slot 4	10
2.4.3	Slot 5	11
2.4.4	Slot 6	12
2.4.5	Slot 7	13
2.5	FID Slots	14
2.5.1	Slot 0	14
2.5.2	Slot 1	15
2.5.3	Slot 2	16
A	Summary	17
A.1	Status	17
A.2	Comments	17

1 Front

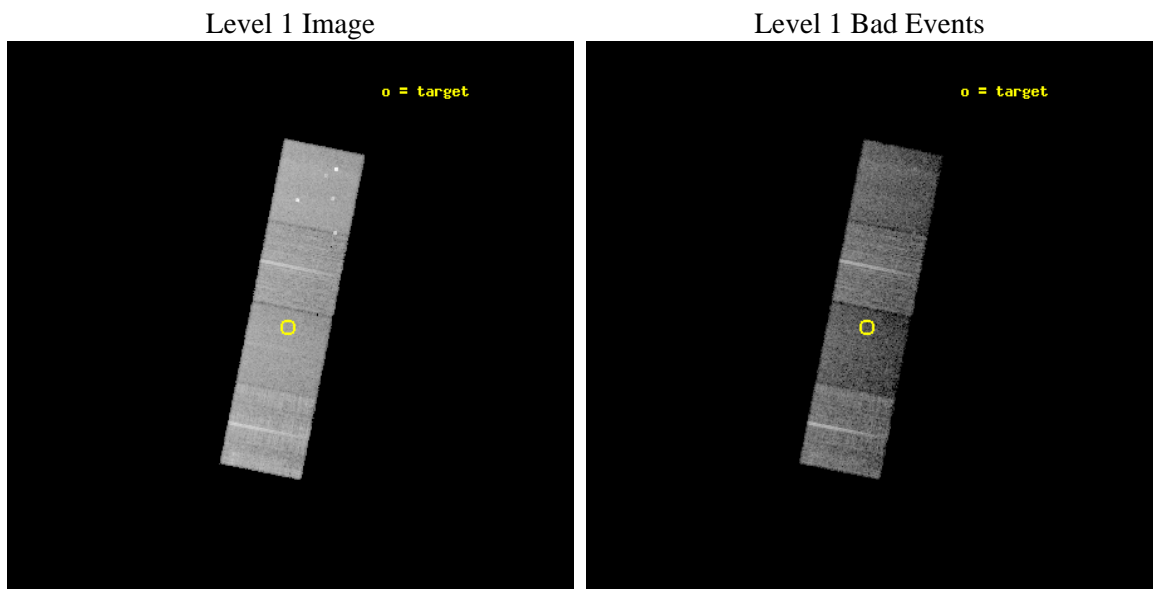
seq_num	701417	Sequence number
obs_id	7749	Observation id
title	Probing heavy obscuration in optically selected Type 2 quasar candidates	Proposal title
observer	Dr Cristian Vignali	Principal investigator
object	SDSS J014932.53-004803.7	Source name
dtcycle	0	
cycle	P	events from which exps? Prim/Second/Both
ra_targ	27.385417	Observer's specified target RA [deg]
dec_targ	-0.801028	Observer's specified target Dec [deg]
ra_nom	27.382126938086	Nominal RA [deg]
dec_nom	-0.79748061346787	Nominal Dec [deg]
roll_nom	101.30782708546	Nominal Roll [deg]
revision	2	Processing version of data
ontime	10140.100077987	Sum of GTIs [s]
livetime	10007.612205435	Livetime [s]
ontime5	10140.100077987	Sum of GTIs [s]
ontime6	10136.959107637	Sum of GTIs [s]
ontime7	10140.100077987	Sum of GTIs [s]
ontime8	10140.100077987	Sum of GTIs [s]
l2events	93983	Number of level 2 events



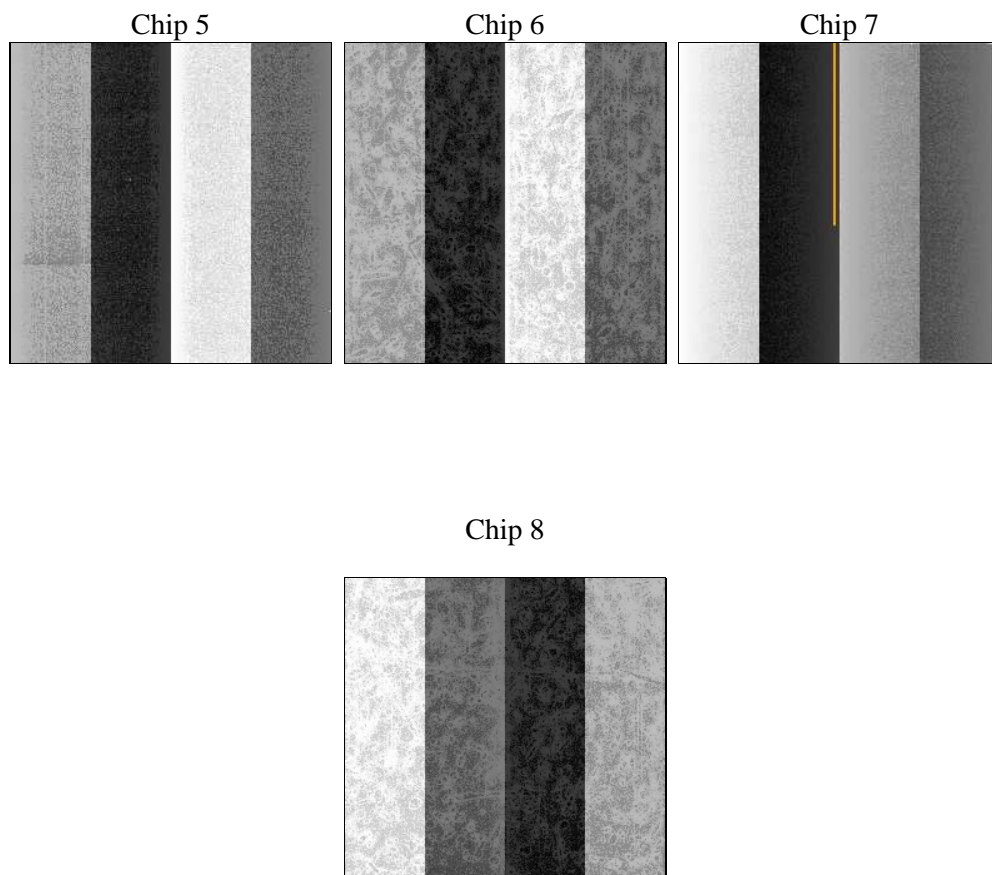
2 OBI

2.1 OBI

2.1.1 Images



2.1.2 Bias



2.1.3 Parameters

obi_num	0	Obi number	sched_exp_time	10000.000000	[s] Scheduled observation exposure time
ascdsver	8.4.4	Processing system revision	ontime	10140.100077987	Sum of GTIs [s]
caldsver	4.4.9	 	ontime5	10140.100077987	Sum of GTIs [s]
date	2012-04-30T02:22:34	Date and time of file creation	ontime6	10136.959107637	Sum of GTIs [s]
revision	2	Processing version of data	ontime7	10140.100077987	Sum of GTIs [s]
			ontime8	10140.100077987	Sum of GTIs [s]
			l1events	347857	Number of level 1 events

2.1.4 Events

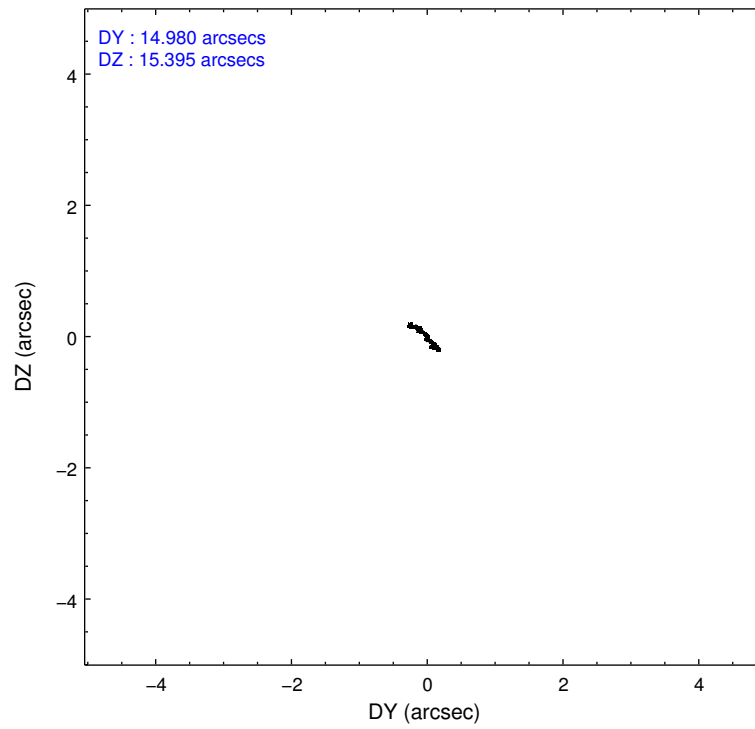
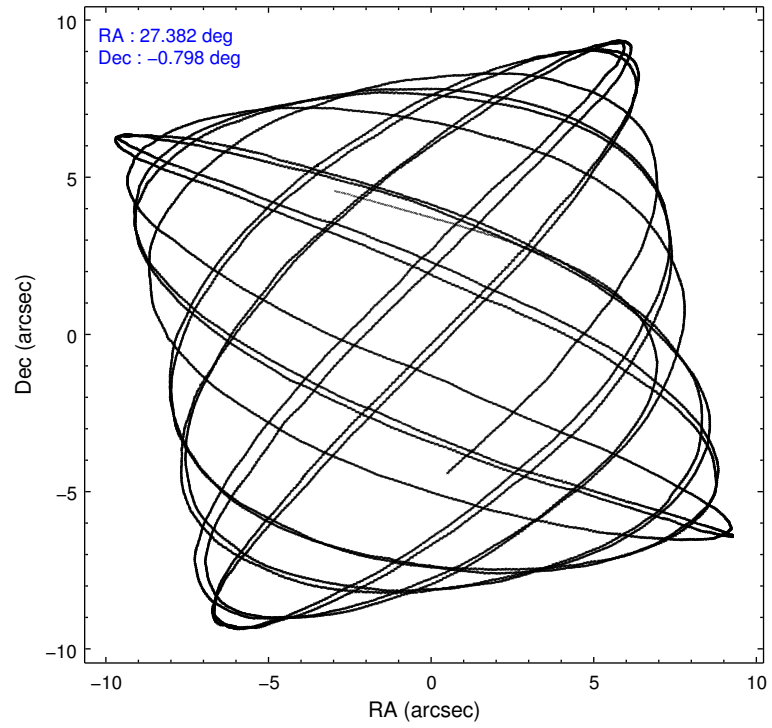
	ccd 5	ccd 6	ccd 7	ccd 8
level 1 events	99895	77617	72317	98028
rejected events	45871	69981	37074	73124
rejected %	45%	90%	51%	74%

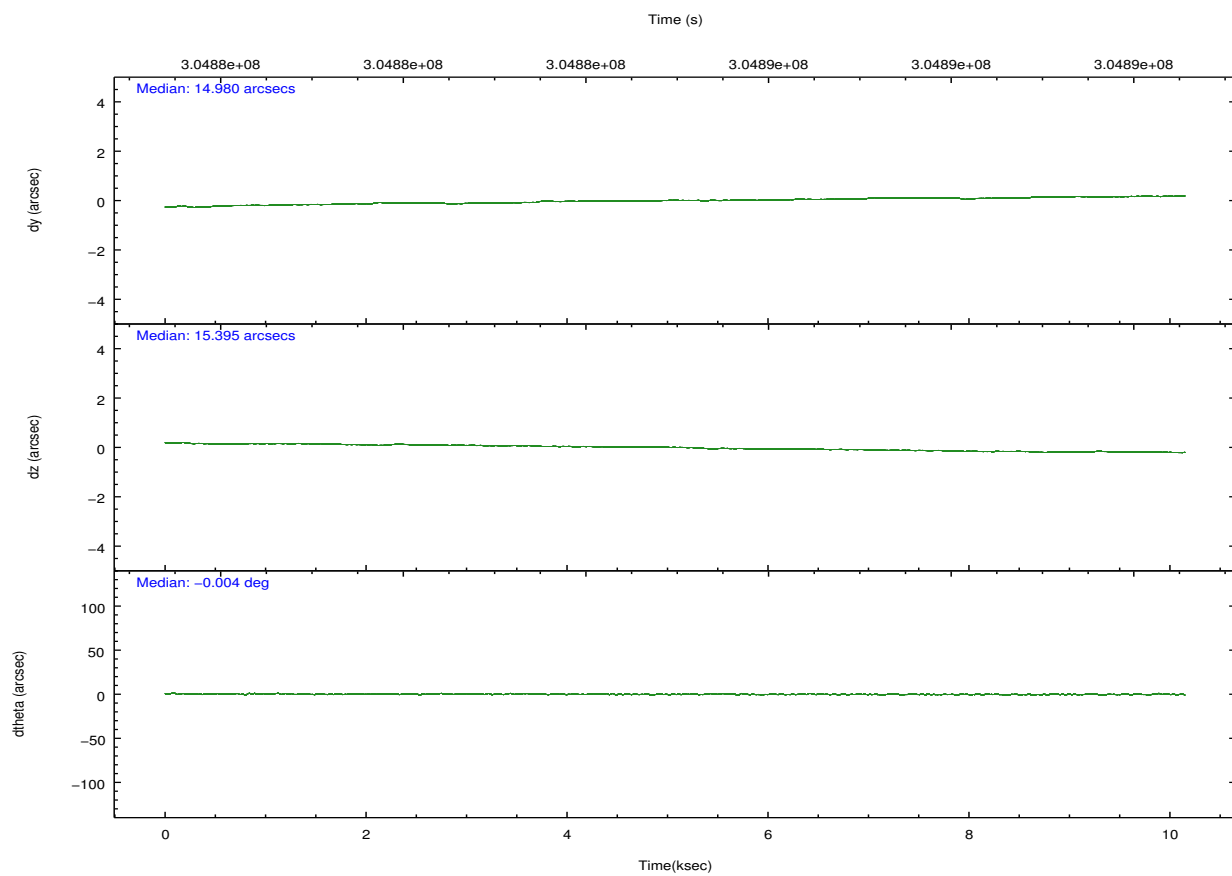
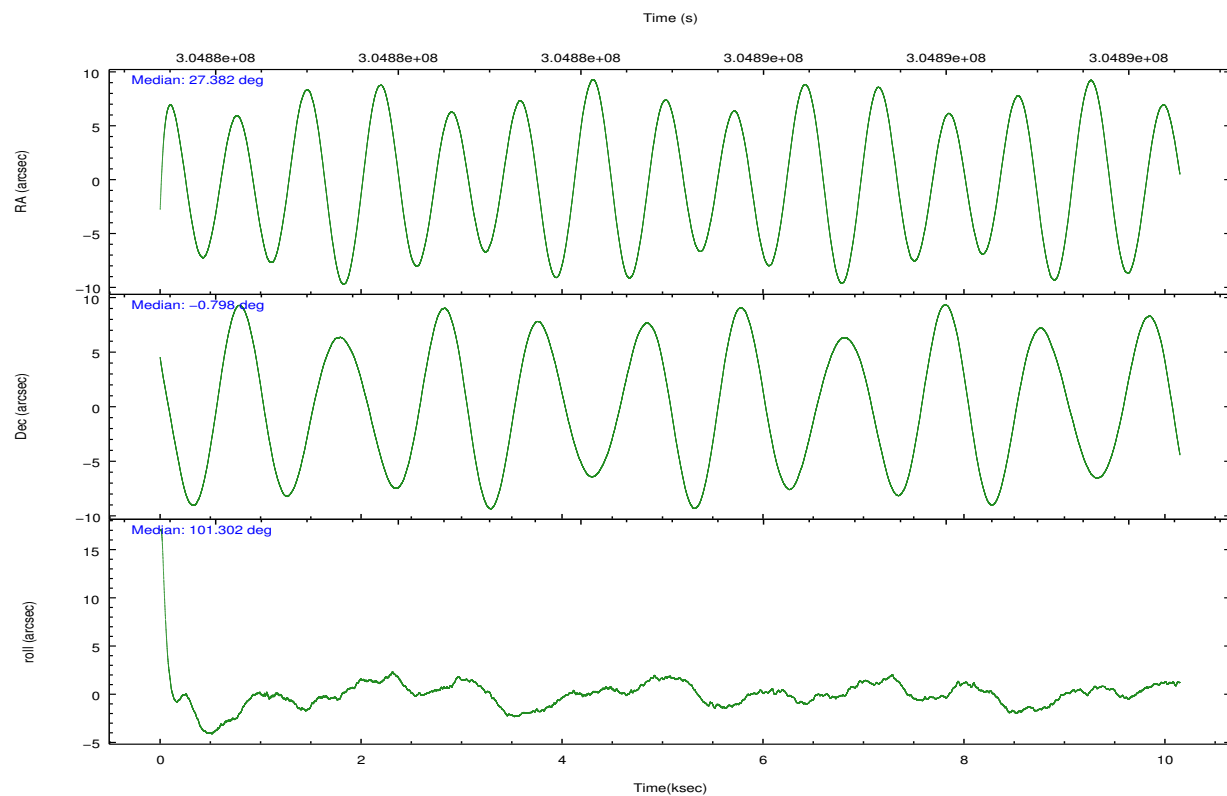
	ccd 5	ccd 6	ccd 7	ccd 8
grade 0 events	8262	2821	3660	6903
	8%	3%	5%	7%
grade 1 events	337	36	122	72
	0%	0%	0%	0%
grade 2 events	16836	1719	7651	5908
	16%	2%	10%	6%
grade 3 events	2312	875	3482	2970
	2%	1%	4%	3%
grade 4 events	2170	825	3348	2654
	2%	1%	4%	2%
grade 5 events	7762	2608	7847	3960
	7%	3%	10%	4%
grade 6 events	25264	1514	17590	6807
	25%	1%	24%	6%
grade 7 events	36952	67219	28617	68754
	36%	86%	39%	70%

2.2 Compared Parameters

Parameter	Planned	Actual	Parameter	Planned	Actual
Instrument	ACIS	ACIS	Obspar format version number	7	7
Detector	ACIS-5678	ACIS-5678	Obspar file type	PREDICTED	ACTUAL
Grating	NONE	NONE	Obspar update status	NONE	UPDATED
Data mode	VFAINT	VFAINT	Number of optional ACIS chips dropped	0	0
Observation mode	POINTING	POINTING	On-chip summing requested	N	N
[deg] Pointing RA	27.400441	27.38212693808605	Subarray requested	NONE	NONE
[deg] Pointing Dec	-0.817766	-0.7974806134678698	Alternating exposures requested	N	N
[deg] Pointing Roll	101.151433	101.3078270854594	[s] Primary exposure time	0.000000	3.1
[mm] SIM focus pos	-0.684267	-0.6828225247311905			
[mm] SIM defocus	0	0.001444936568705701			
[mm] SIM translation stage pos	-190.132523	-190.1400660498719			
[mm] SIM translation stage offset	0	0.00754346686406393			
[s] Observation start time (MET)	304880053.184000	304878918.85135			
Observation start date	2007-08-30T16:53:08	2007-08-30T16:35:18			
[s] Observation end time (MET)	304890053.184000	304890555.67691			
Observation end date	2007-08-30T19:39:48	2007-08-30T19:49:15			
Read mode	TIMED	TIMED			

2.3 Aspect



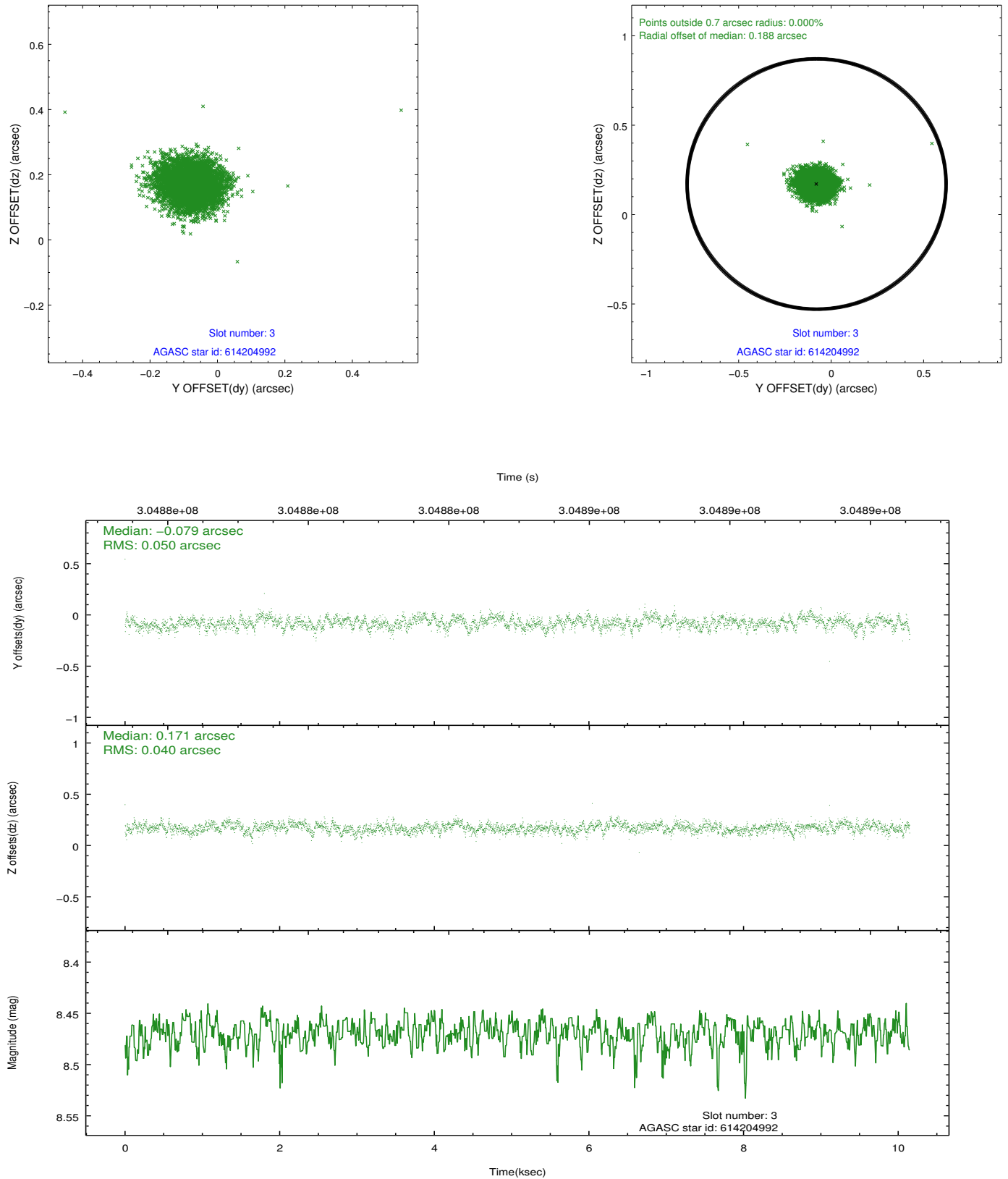


Slot Statistics

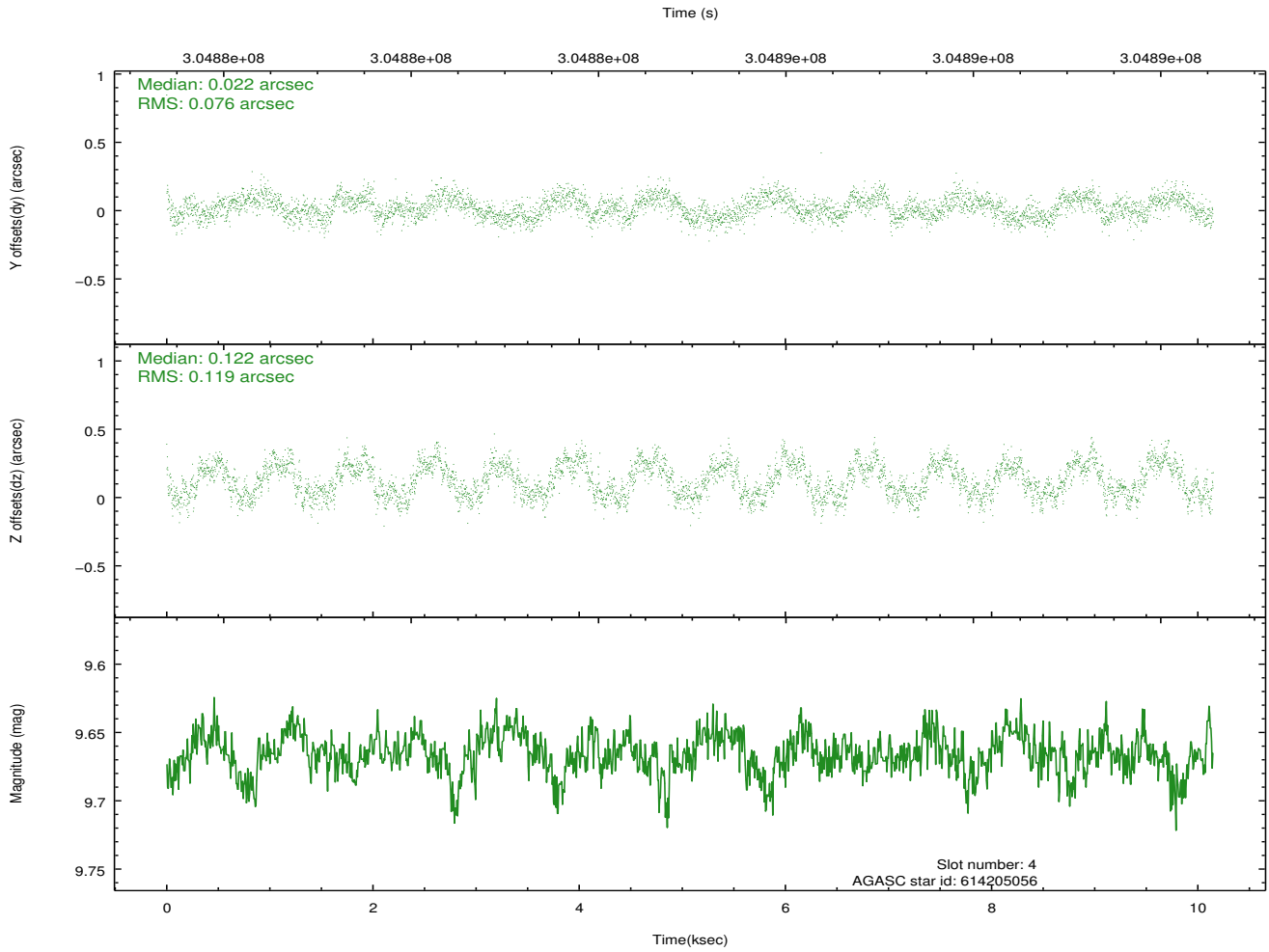
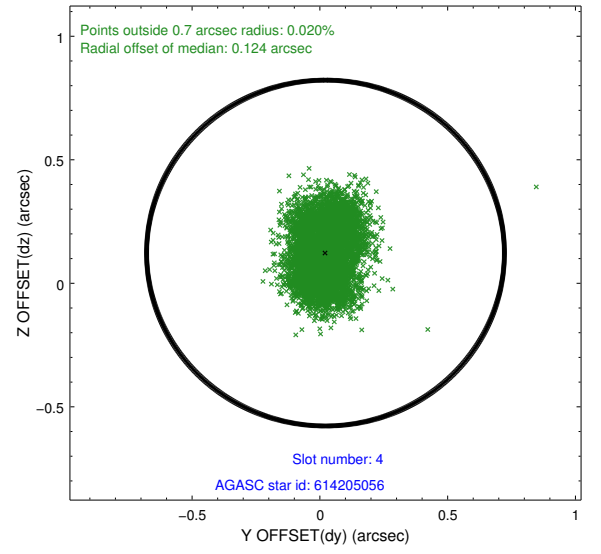
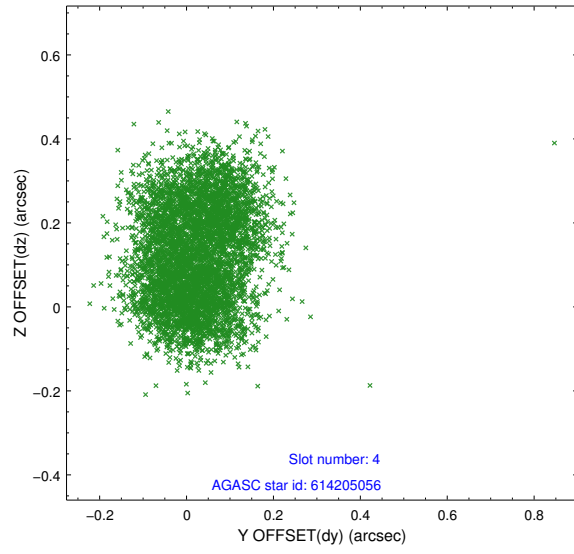
slot	status	id	mag	n_pts	med_dy	med_dz	dr1	dr2	ra	dec	mean_y	mean_z
0	FID	ACIS-S-2	7.09	2476	-0.106	-0.036	0.009	0.014	0.000000	0.000000	-768.03	-1736.81
1	FID	ACIS-S-4	7.19	2476	0.225	0.061	0.007	0.017	0.000000	0.000000	2145.33	171.25
2	FID	ACIS-S-5	7.22	2475	-0.151	-0.016	0.008	0.020	0.000000	0.000000	-1820.26	165.41
3	GUIDE	614204992	8.47	4947	-0.079	0.171	0.067	0.108	27.733117	-0.287861	1640.65	-1543.49
4	GUIDE	614205056	9.67	4945	0.022	0.122	0.154	0.229	27.912534	-0.484343	821.91	-2040.69
5	GUIDE	614208104	8.70	4951	-0.006	0.046	0.087	0.132	27.741573	-0.639721	391.88	-1328.85
6	GUIDE	614213736	9.18	4951	-0.106	-0.225	0.090	0.144	27.170208	-0.361551	1771.95	495.54
7	GUIDE	614217432	8.64	4944	0.166	-0.108	0.073	0.121	27.162121	-1.530993	-2352.50	1338.08

2.4 Star Slots

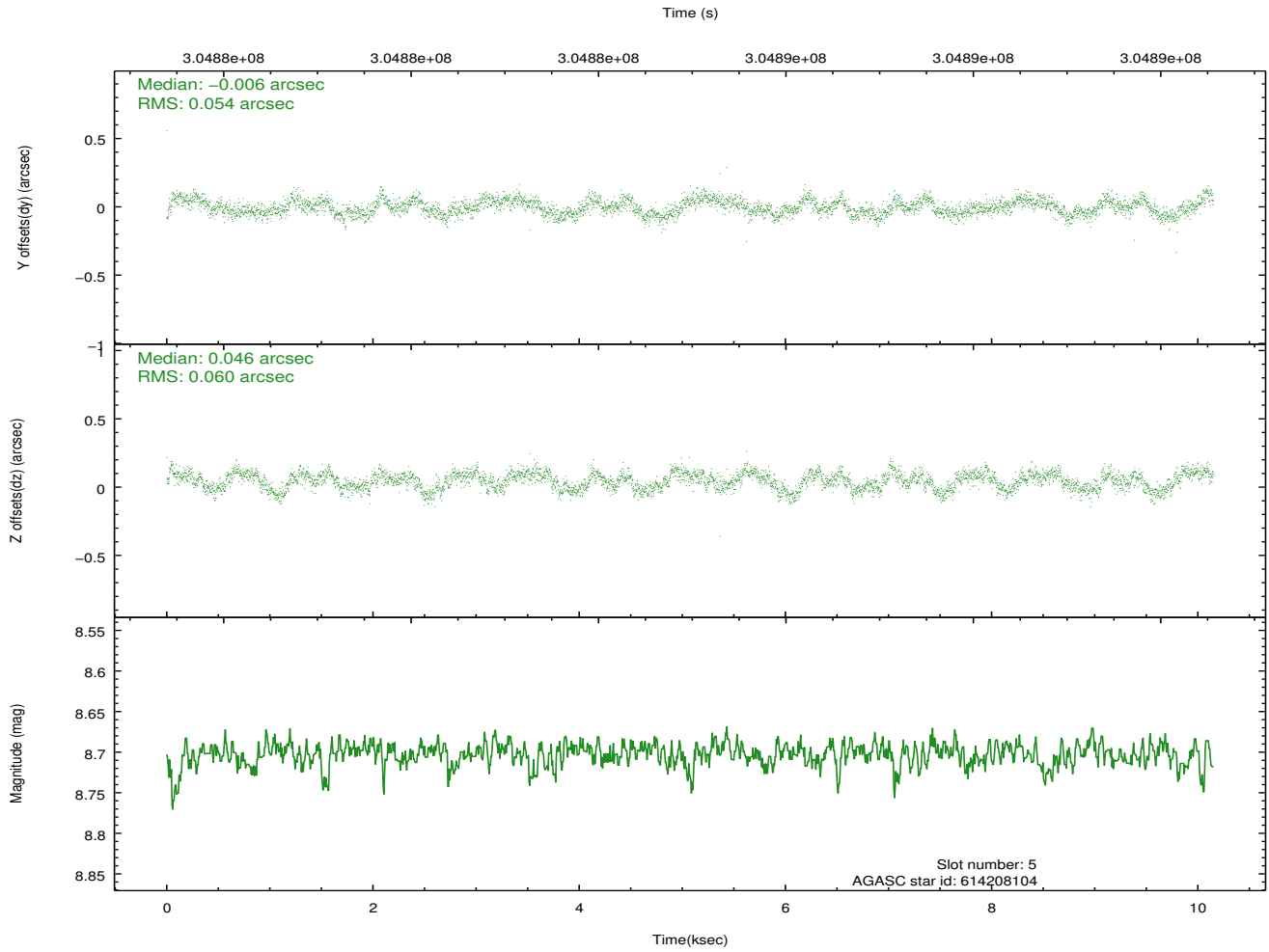
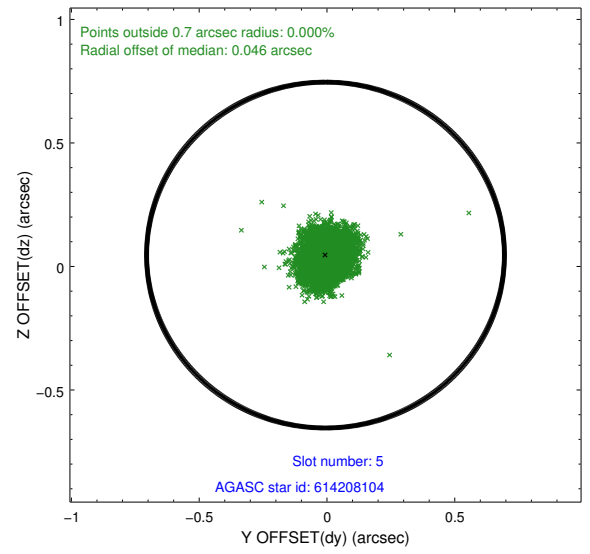
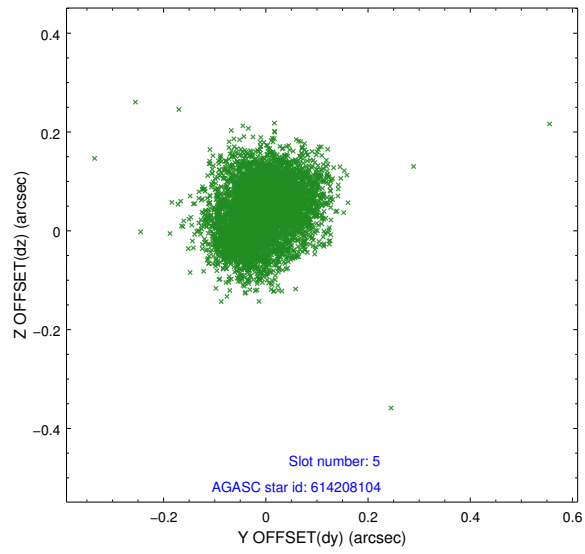
2.4.1 Slot 3



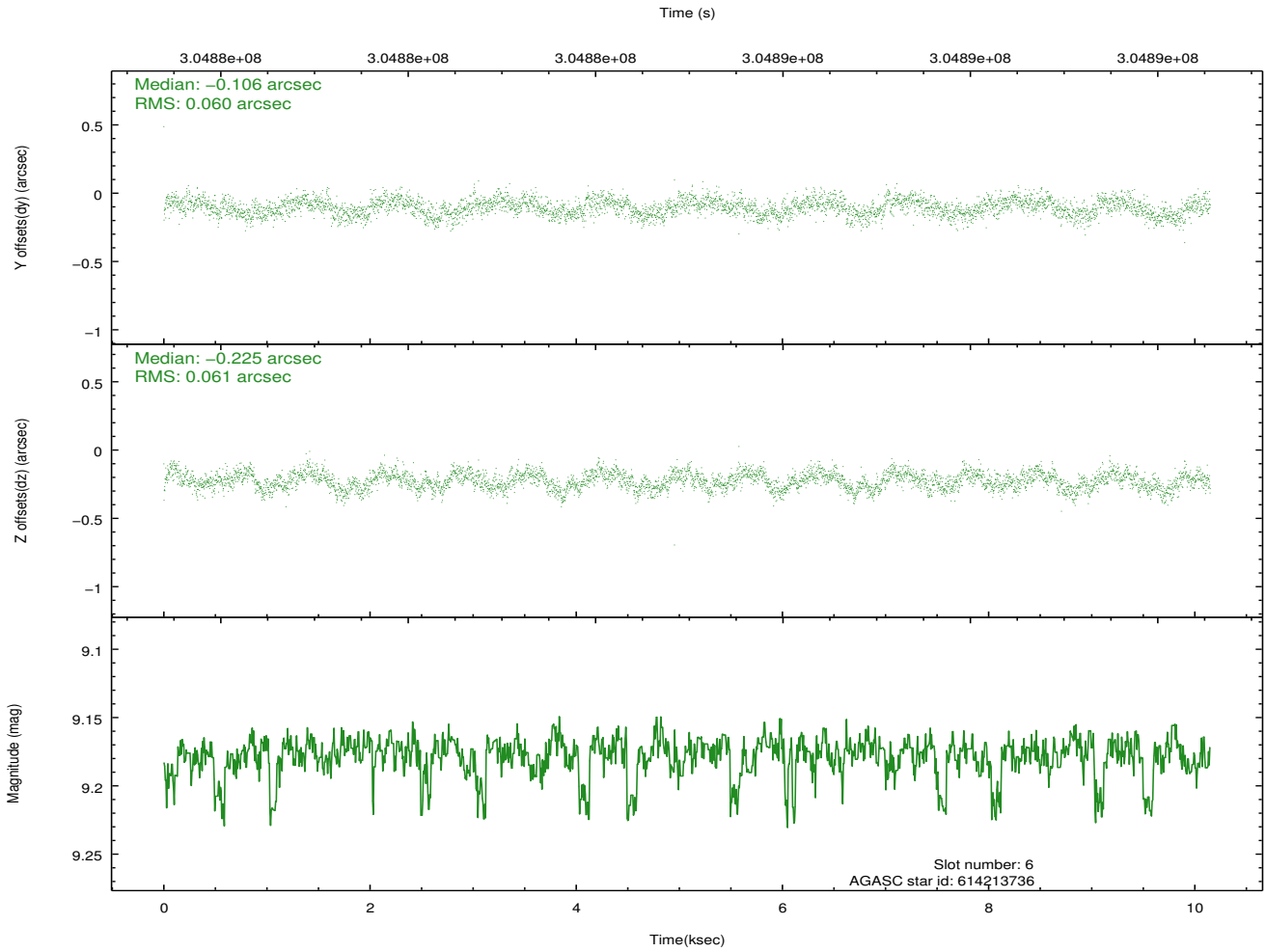
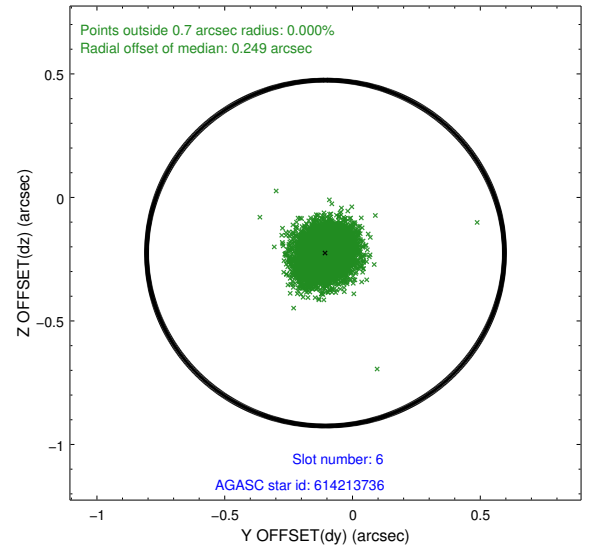
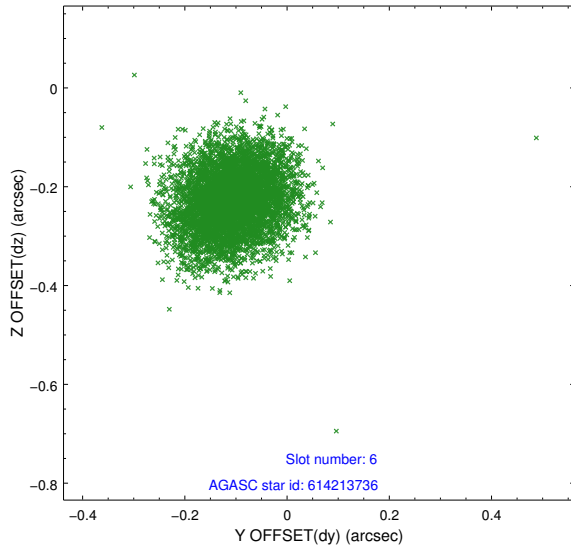
2.4.2 Slot 4



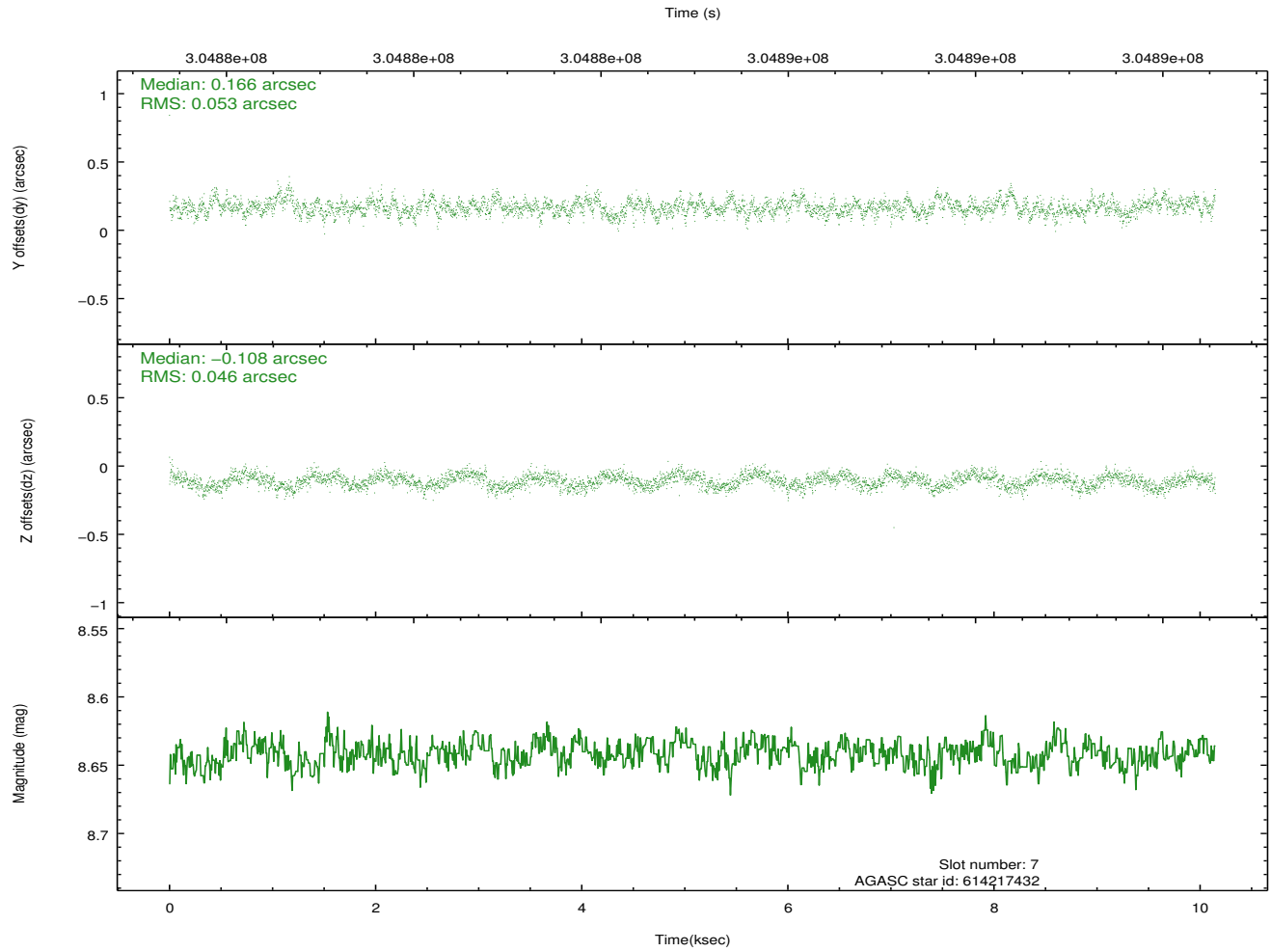
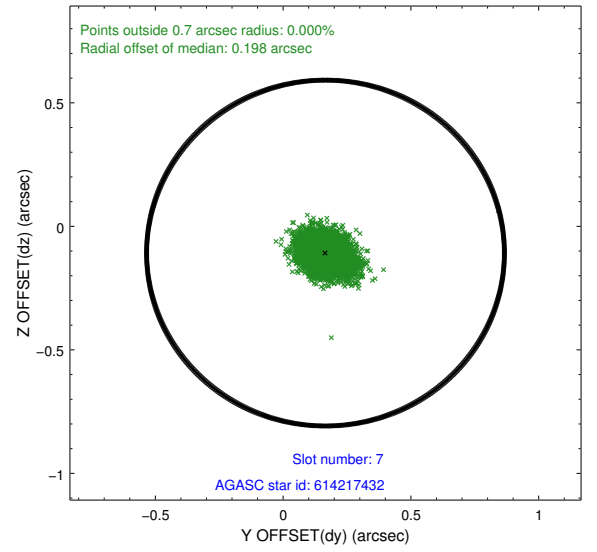
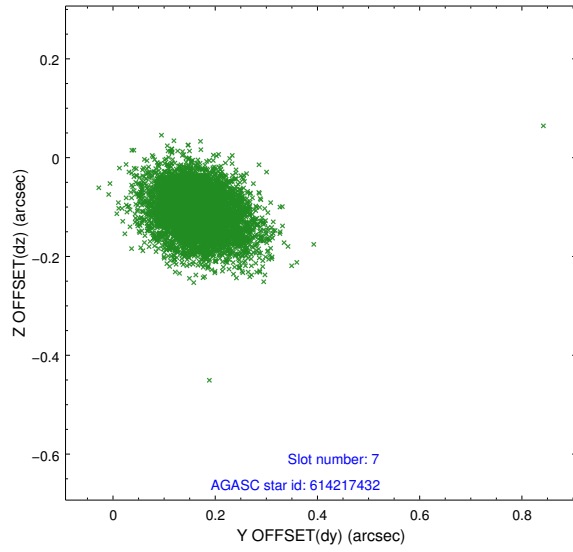
2.4.3 Slot 5



2.4.4 Slot 6

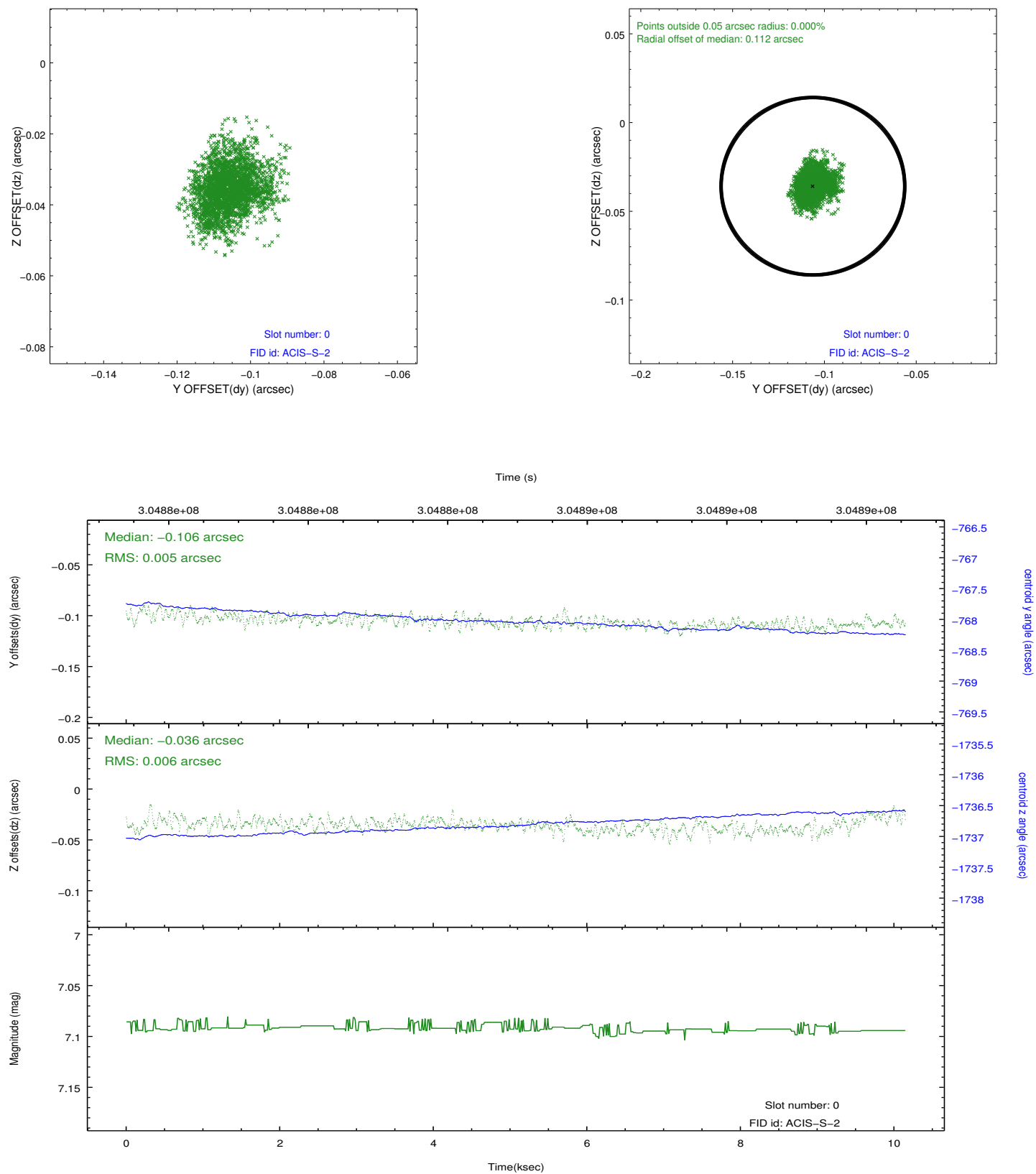


2.4.5 Slot 7

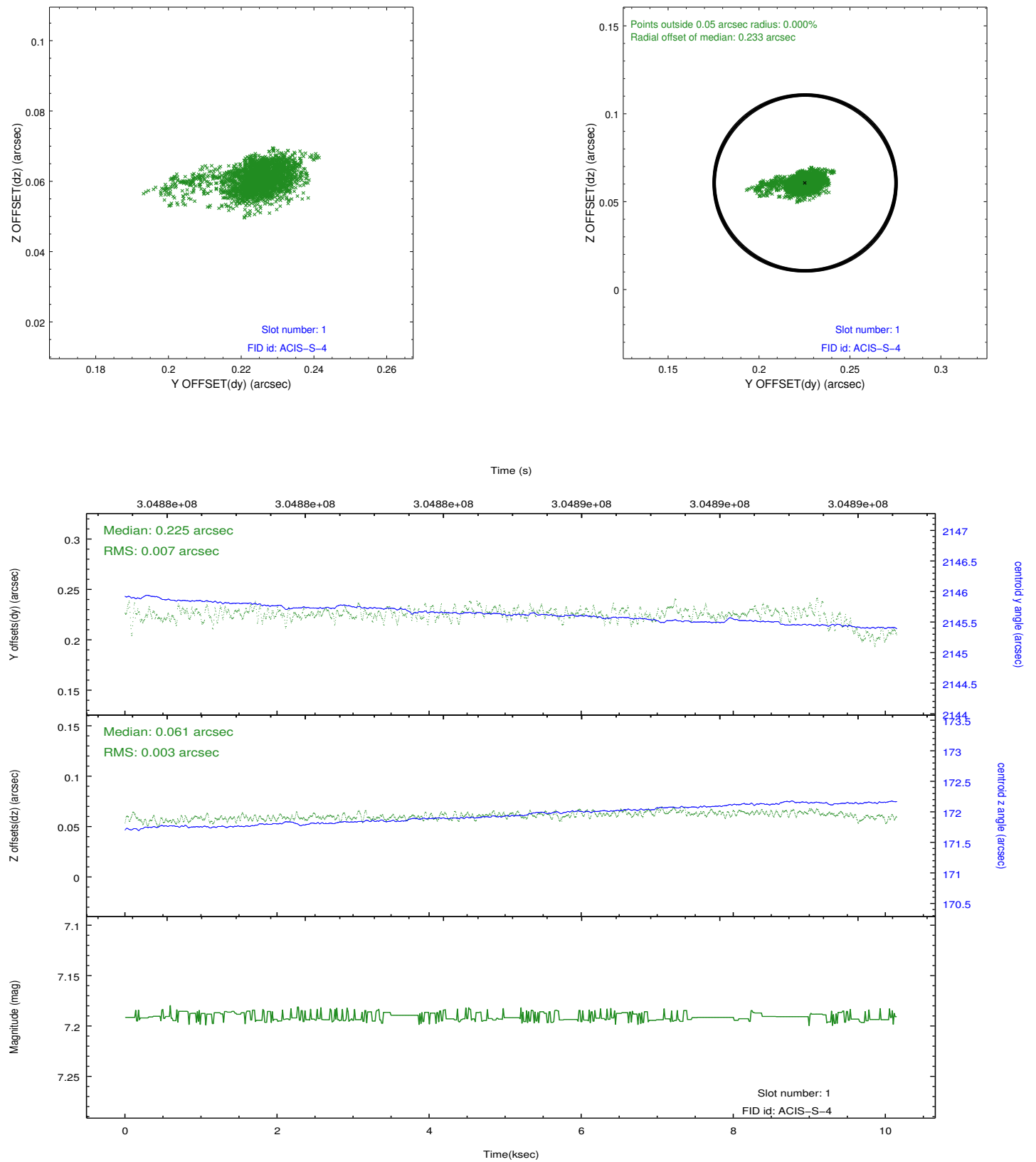


2.5 FID Slots

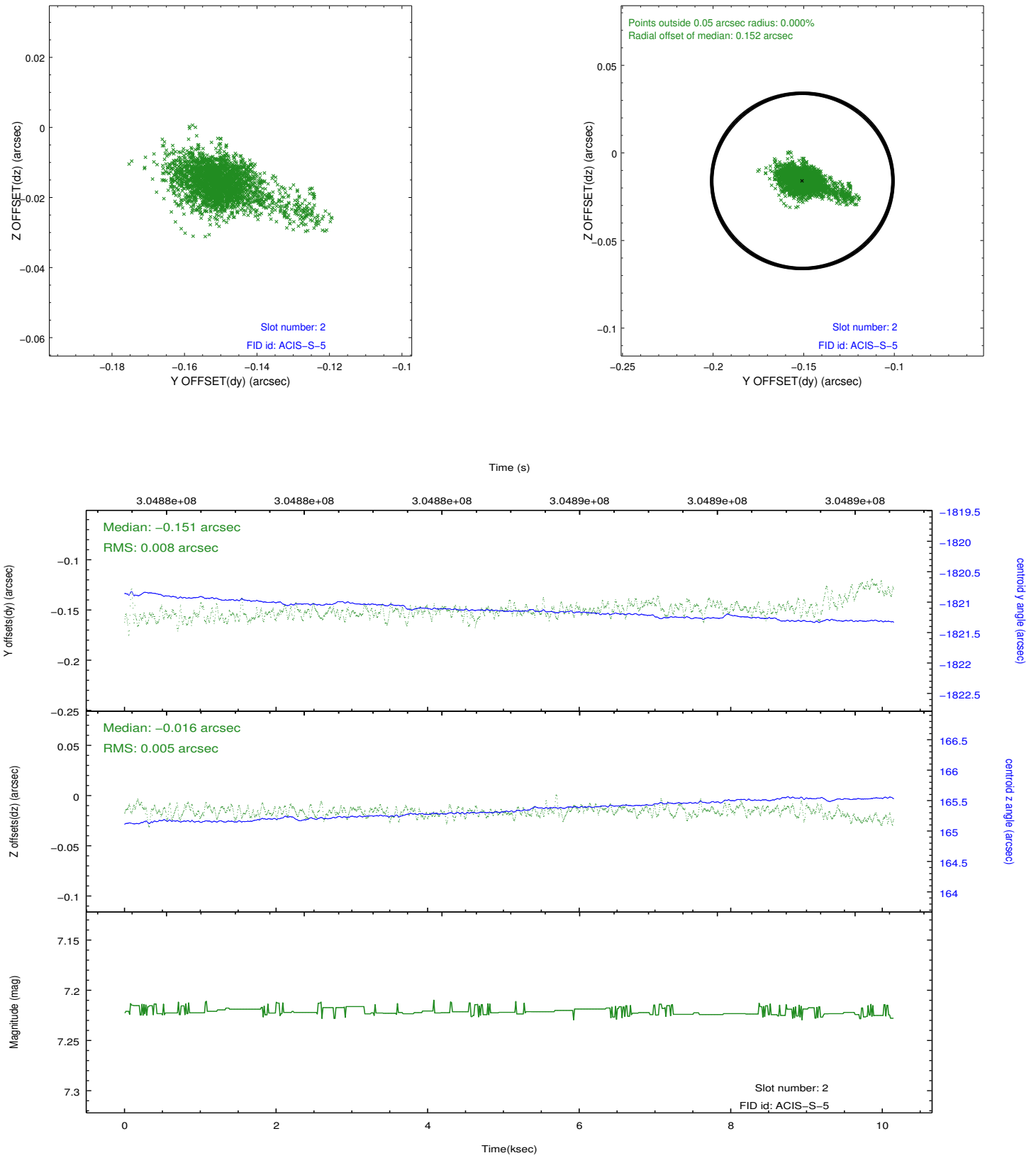
2.5.1 Slot 0



2.5.2 Slot 1



2.5.3 Slot 2



A Summary

A.1 Status

V&V Scientist	Jen Lauer
V&V Date (YYYY-MM-DD)	2012.05.02
V&V Edition	1
V&V Disposition and Status	OK
V&V Charge Time	10.1401

A.2 Comments