

V&V Reference Report

L2 ASCDS Version : 8.4.3.1

Observation 7699 - L2 Version 3
Chandra X-Ray Center

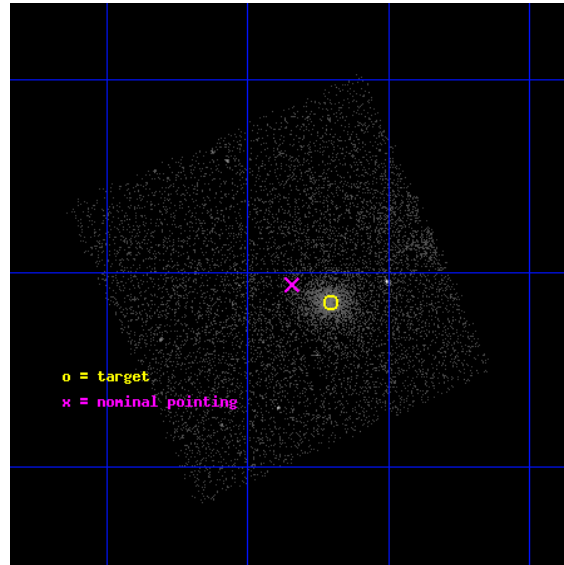
L2 Processing Date : Apr 16 2012

Contents

1	Front	2
2	OBI	3
2.1	OBI	3
2.1.1	Images	3
2.1.2	Bias	3
2.1.3	Parameters	4
2.1.4	Events	4
2.2	Compared Parameters	5
2.3	Aspect	6
2.4	Star Slots	9
2.4.1	Slot 3	9
2.4.2	Slot 4	10
2.4.3	Slot 5	11
2.4.4	Slot 6	12
2.4.5	Slot 7	13
2.5	FID Slots	14
2.5.1	Slot 0	14
2.5.2	Slot 1	15
2.5.3	Slot 2	16
A	Summary	17
A.1	Status	17
A.2	Comments	17

1 Front

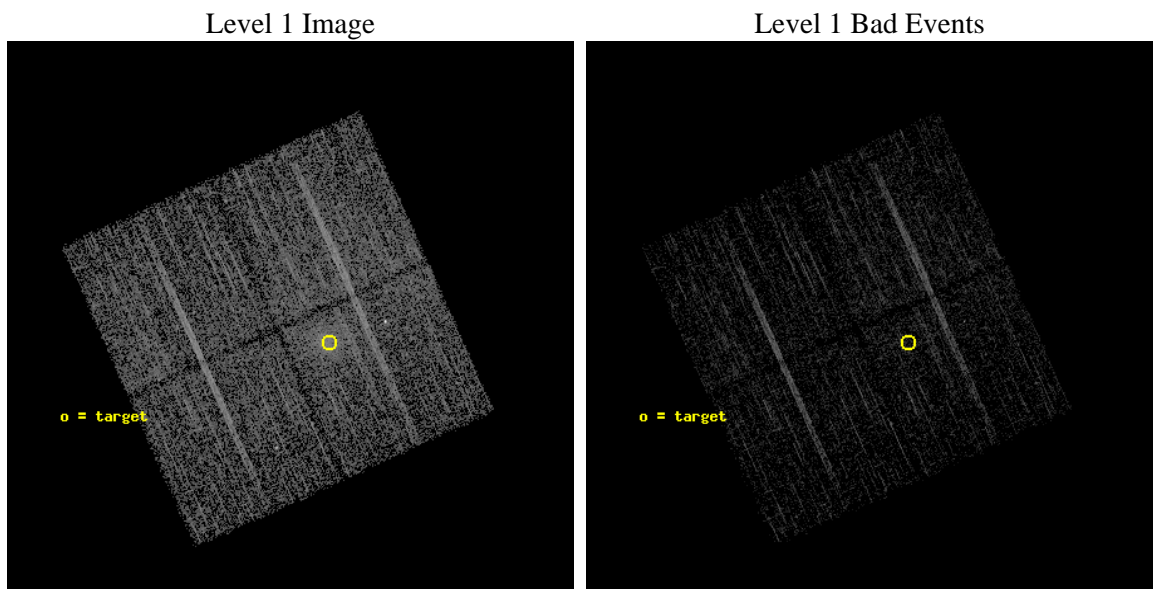
seq_num	701367	Sequence number
obs_id	7699	Observation id
title	Snapshot Survey for X-ray Outbursts in Rich Clusters of Galaxies	P
observer	Professor Gordon Garmire	Principal investigator
object	MS0906.5+1110	Source name
dtcycle	0	
cycle	P	events from which exps? Prim/Second/Both
ra_targ	137.30125	Observer's specified target RA [deg]
dec_targ	10.975167	Observer's specified target Dec [deg]
ra_nom	137.33604630455	Nominal RA [deg]
dec_nom	10.990058640084	Nominal Dec [deg]
roll_nom	65.809647279451	Nominal Roll [deg]
revision	3	Processing version of data
ontime	4775.7130092382	Sum of GTIs [s]
livetime	4713.3148029438	Livetime [s]
ontime0	4775.58986938	Sum of GTIs [s]
ontime1	4775.6309093833	Sum of GTIs [s]
ontime2	4775.6719493866	Sum of GTIs [s]
ontime3	4775.7130092382	Sum of GTIs [s]
l2events	12724	Number of level 2 events



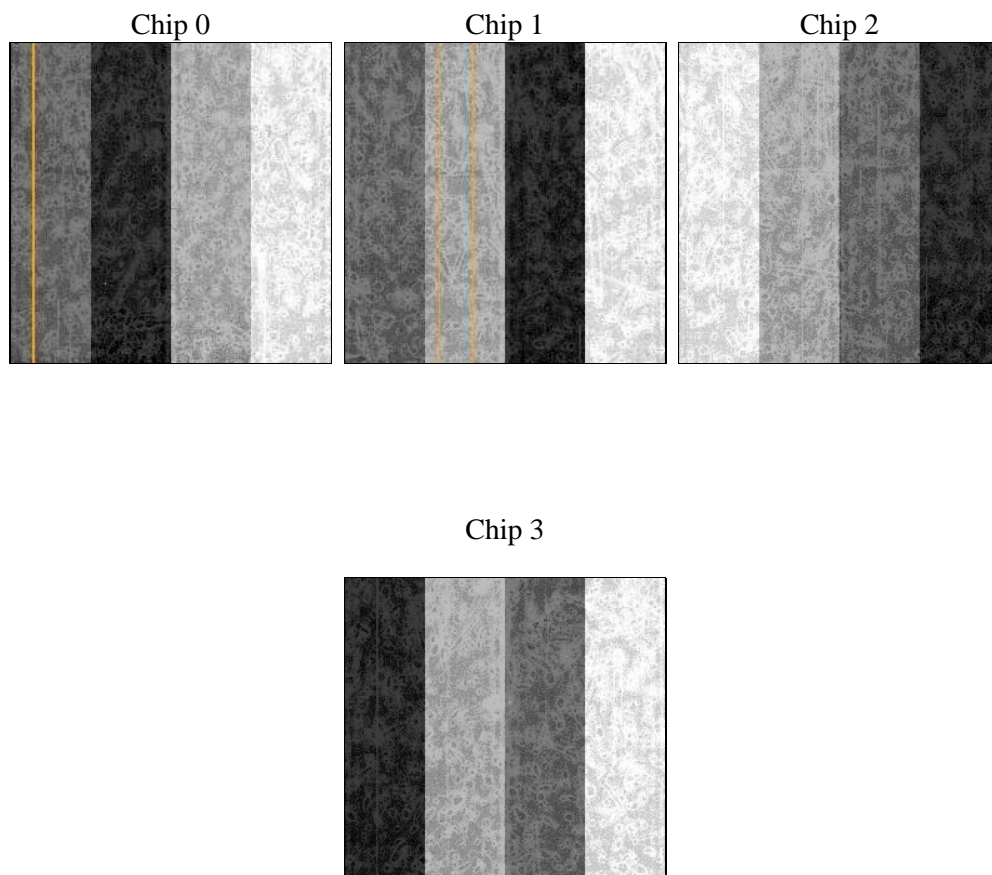
2 OBI

2.1 OBI

2.1.1 Images



2.1.2 Bias



2.1.3 Parameters

obi_num	0	Obi number	sched_exp_time	5000.000000	[s] Scheduled observation exposure time
ascdsver	8.4.3.1	Processing system revision	ontime	4775.7130092382	Sum of GTIs [s]
caldsver	4.4.9	 	ontime0	4775.58986938	Sum of GTIs [s]
date	2012-04-16T13:15:58	Date and time of file creation	ontime1	4775.6309093833	Sum of GTIs [s]
revision	3	Processing version of data	ontime2	4775.6719493866	Sum of GTIs [s]
			ontime3	4775.7130092382	Sum of GTIs [s]
			l1events	124399	Number of level 1 events

2.1.4 Events

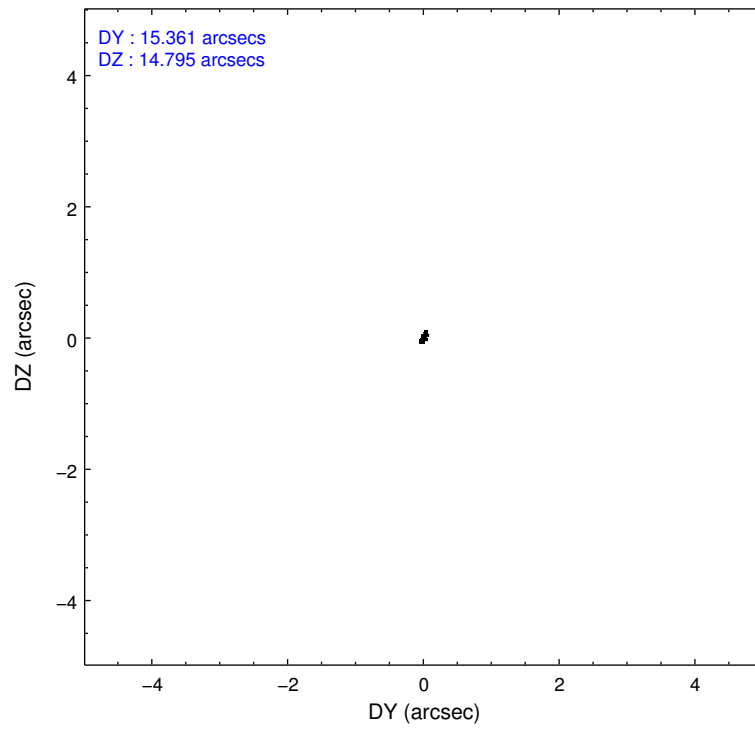
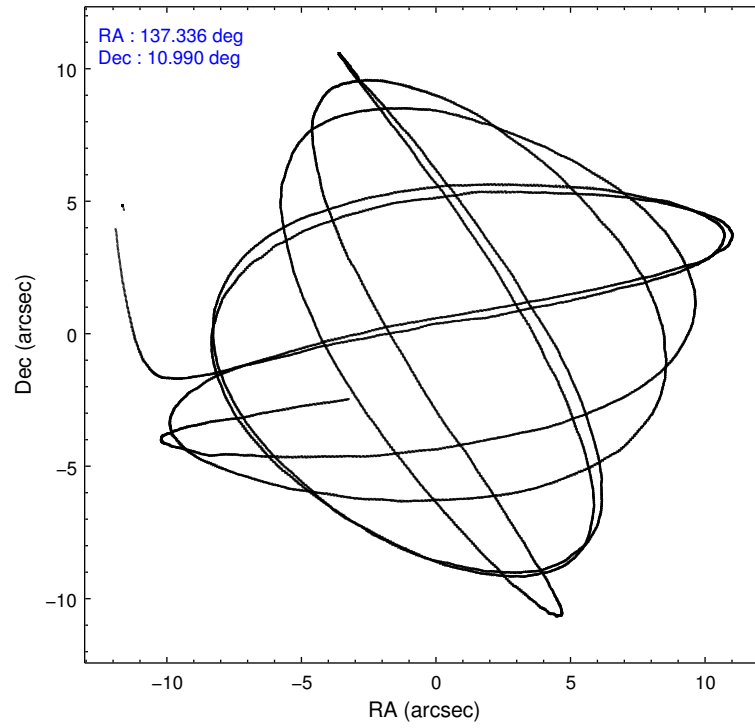
	ccd 0	ccd 1	ccd 2	ccd 3
level 1 events	30069	27617	34148	32565
rejected events	27321	24621	30940	26293
rejected %	90%	89%	90%	80%

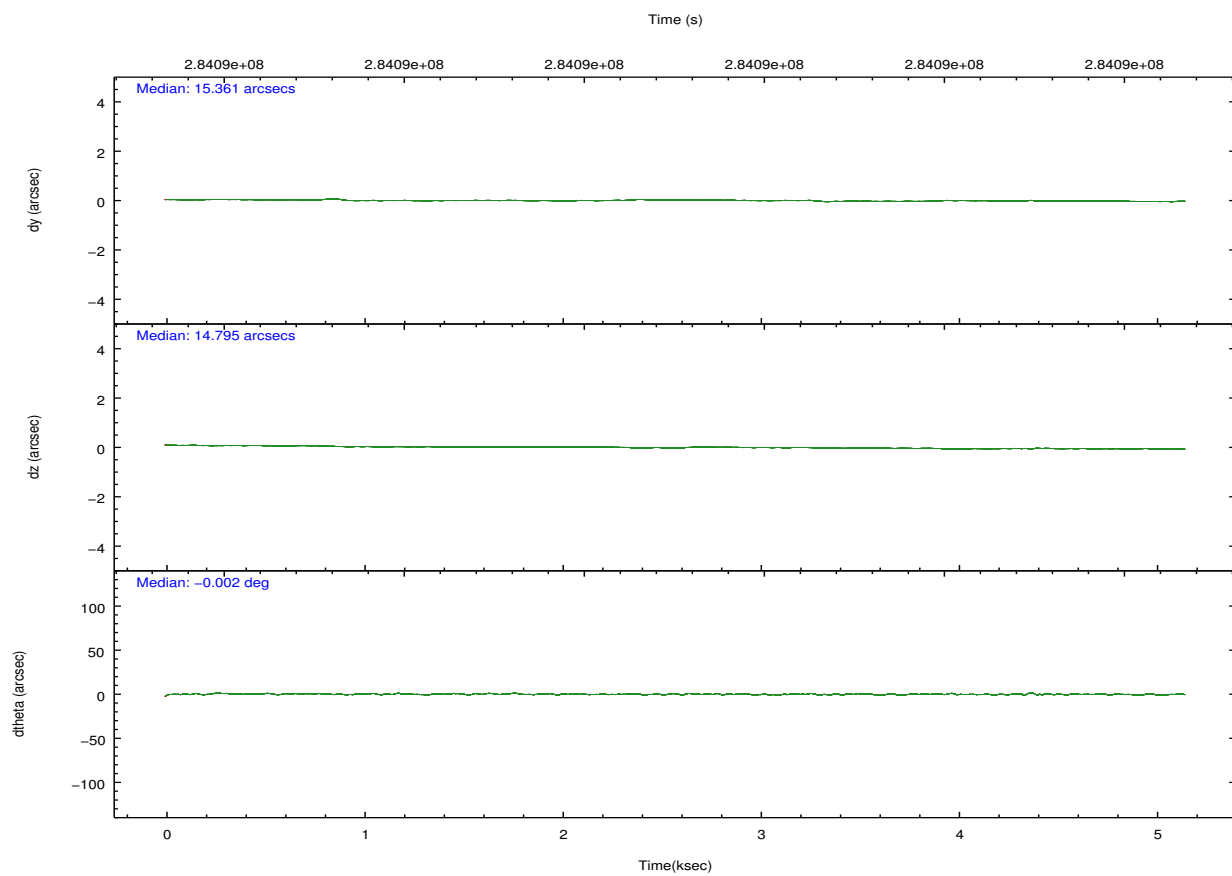
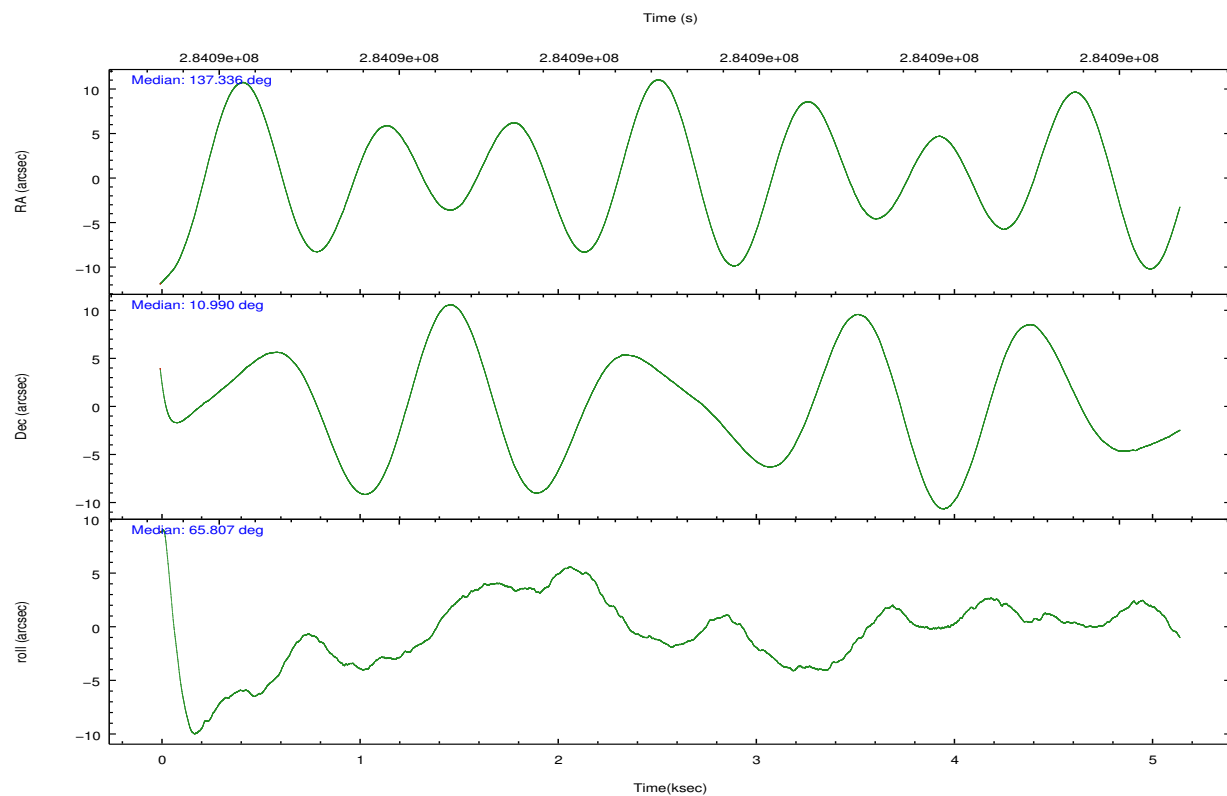
	ccd 0	ccd 1	ccd 2	ccd 3
grade 0 events	1148	1282	1538	4174
	3%	4%	4%	12%
grade 1 events	21	17	23	62
	0%	0%	0%	0%
grade 2 events	689	595	694	852
	2%	2%	2%	2%
grade 3 events	282	312	268	414
	0%	1%	0%	1%
grade 4 events	258	350	313	371
	0%	1%	0%	1%
grade 5 events	482	553	451	629
	1%	2%	1%	1%
grade 6 events	373	462	399	469
	1%	1%	1%	1%
grade 7 events	26816	24046	30462	25594
	89%	87%	89%	78%

2.2 Compared Parameters

Parameter	Planned	Actual	Parameter	Planned	Actual
Instrument	ACIS	ACIS	Obspar format version number	7	7
Detector	ACIS-0123	ACIS-0123	Obspar file type	PREDICTED	ACTUAL
Grating	NONE	NONE	Obspar update status	NONE	UPDATED
Data mode	VFAINT	VFAINT	Number of optional ACIS chips dropped	0	0
Observation mode	POINTING	POINTING	On-chip summing requested	N	N
[deg] Pointing RA	137.339115	137.3360463045495	Subarray requested	NONE	NONE
[deg] Pointing Dec	10.962707	10.99005864008362	Alternating exposures requested	N	N
[deg] Pointing Roll	65.600339	65.80964727945094	[s] Primary exposure time	0.000000	3.1
[mm] SIM focus pos	-0.782348	-0.7809083437167272			
[mm] SIM defocus	0	0.001439871863259334			
[mm] SIM translation stage pos	-233.592463	-233.5874344608287			
[mm] SIM translation stage offset	0	-0.005018542100998502			
[s] Observation start time (MET)	284089065.184000	284087583.6469			
Observation start date	2007-01-02T01:36:40	2007-01-02T01:13:03			
[s] Observation end time (MET)	284094065.184000	284094458.83473			
Observation end date	2007-01-02T03:00:00	2007-01-02T03:07:38			
Read mode	TIMED	TIMED			

2.3 Aspect



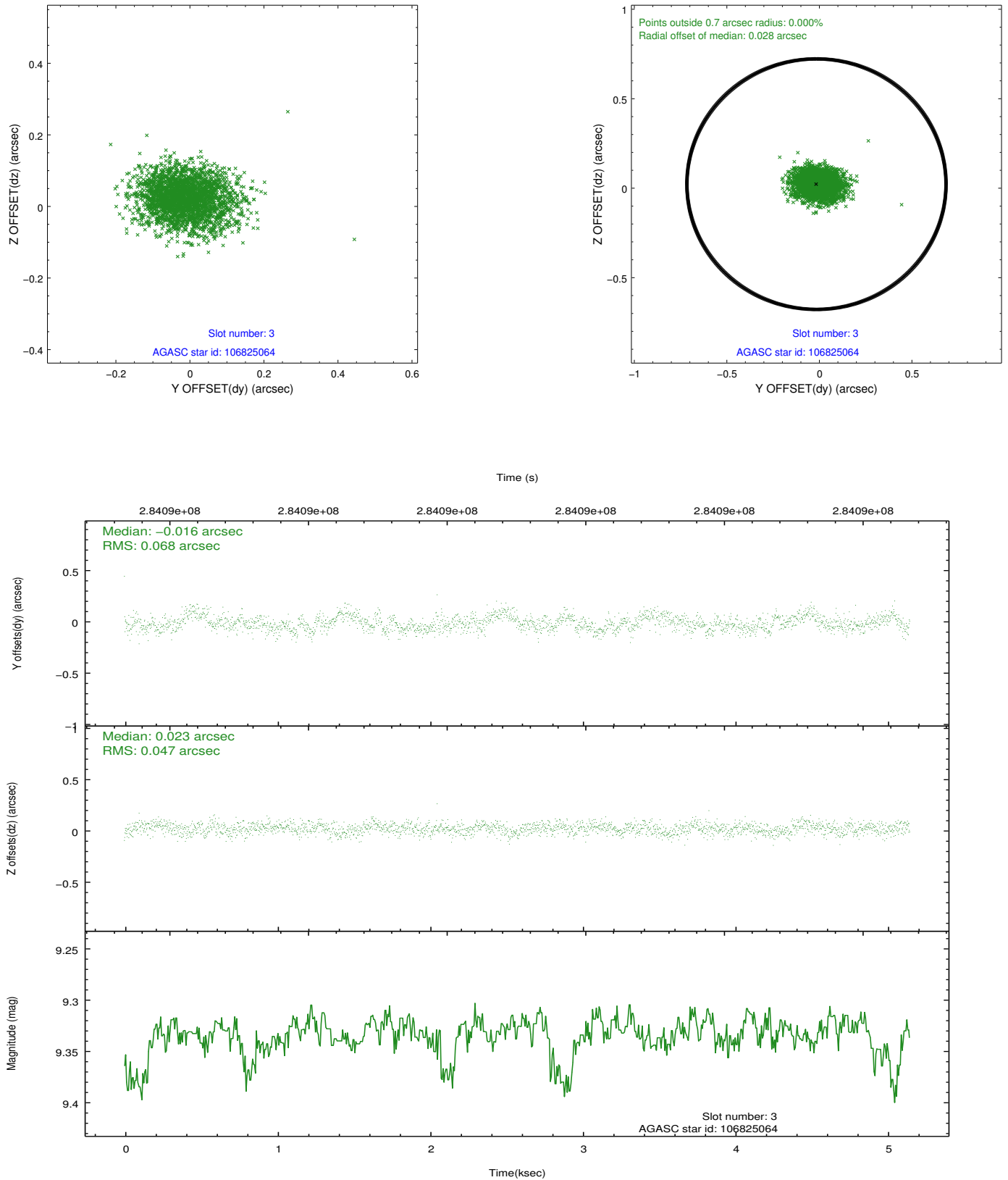


Slot Statistics

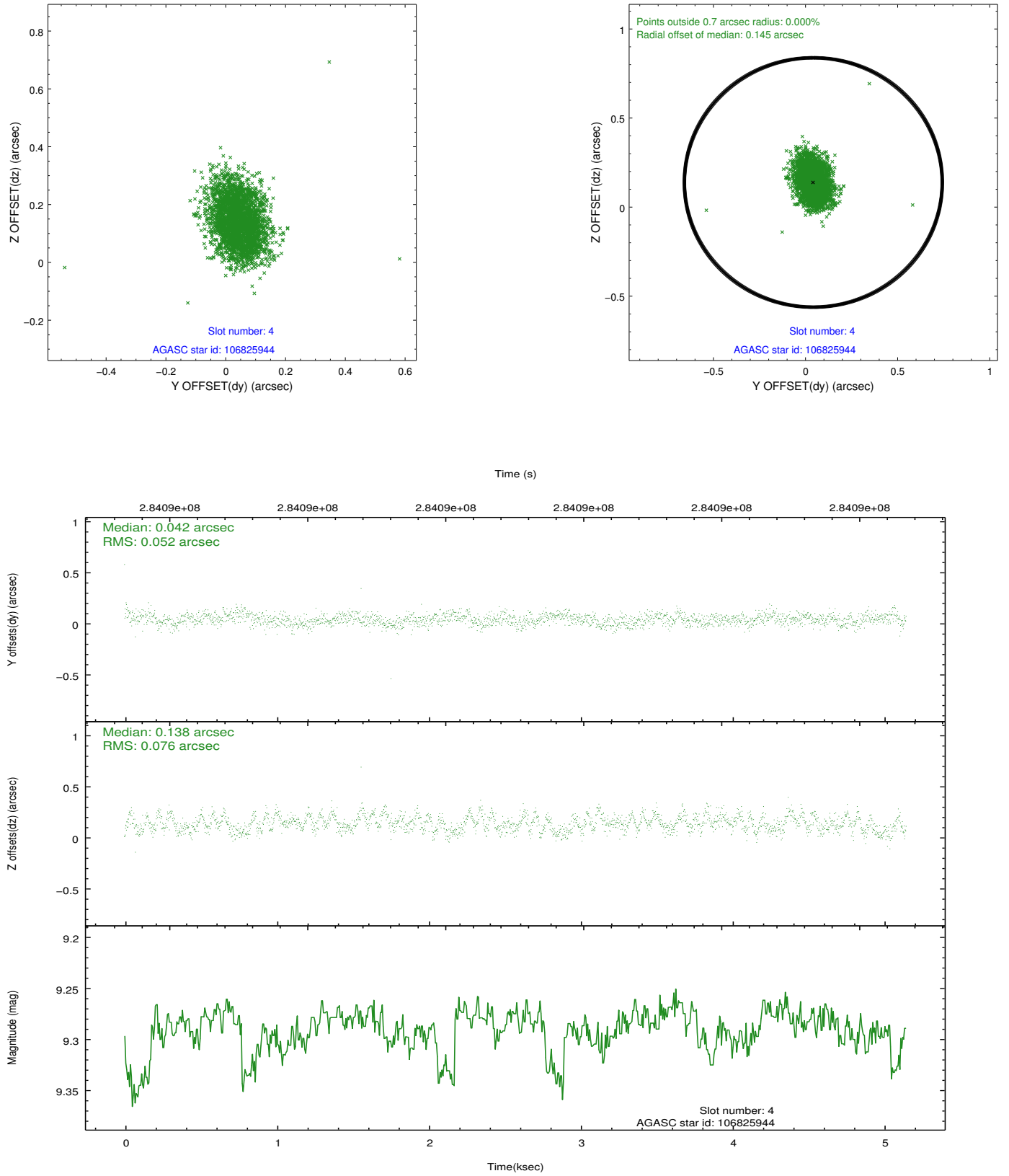
slot	status	id	mag	n_pts	med_dy	med_dz	dr1	dr2	ra	dec	mean_y	mean_z
0	FID	ACIS-I-1	7.24	1255	0.040	-0.015	0.007	0.012	0.000000	0.000000	924.13	-838.40
1	FID	ACIS-I-5	7.23	1256	-0.231	0.038	0.006	0.010	0.000000	0.000000	-1823.60	1058.55
2	FID	ACIS-I-6	7.25	1256	0.100	0.048	0.007	0.012	0.000000	0.000000	388.45	1704.40
3	GUIDE	106825064	9.33	2510	-0.016	0.023	0.086	0.143	137.552536	11.513643	2117.68	133.56
4	GUIDE	106825944	9.29	2506	0.042	0.138	0.096	0.157	137.716825	10.697762	-314.62	-1610.64
5	GUIDE	106827888	6.76	2512	-0.200	-0.026	0.066	0.109	137.443435	11.564377	2124.08	558.93
6	GUIDE	106826608	8.94	2512	-0.093	-0.082	0.110	0.165	136.887374	11.444072	921.80	2167.79
7	GUIDE	106828920	9.95	2509	0.259	-0.045	0.128	0.212	136.796462	10.624806	-1898.54	1247.18

2.4 Star Slots

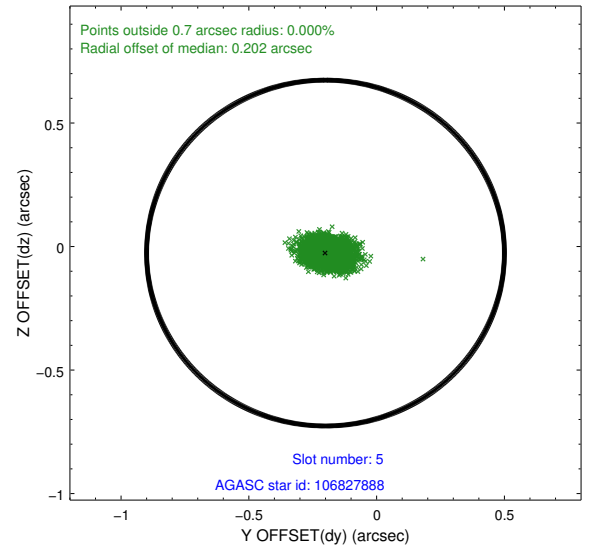
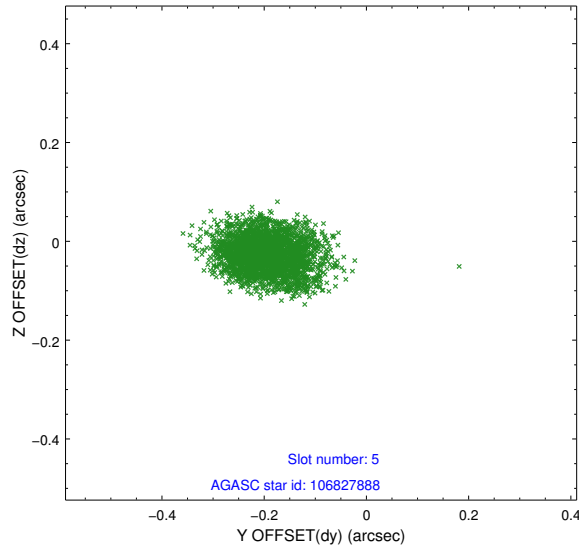
2.4.1 Slot 3



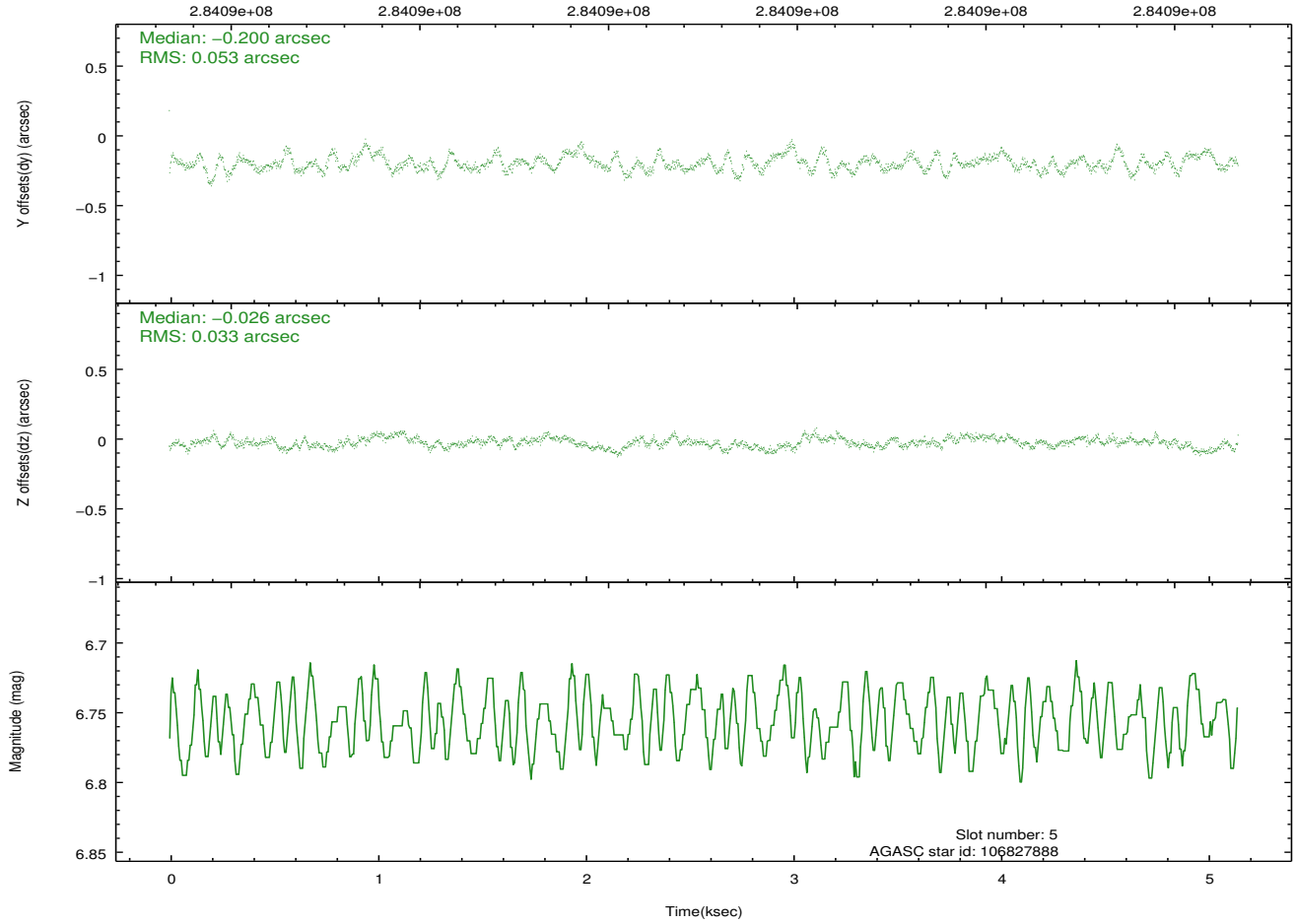
2.4.2 Slot 4



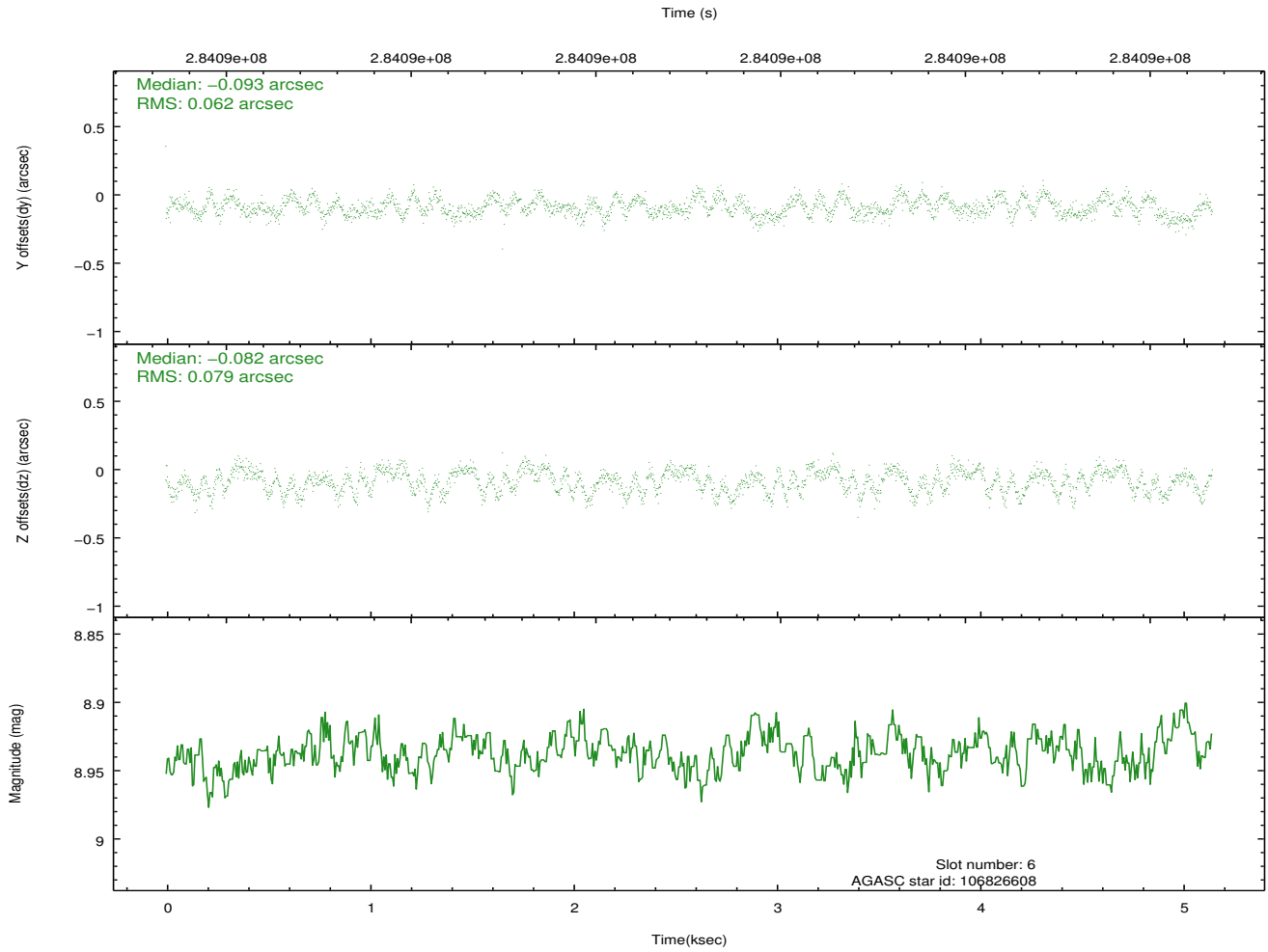
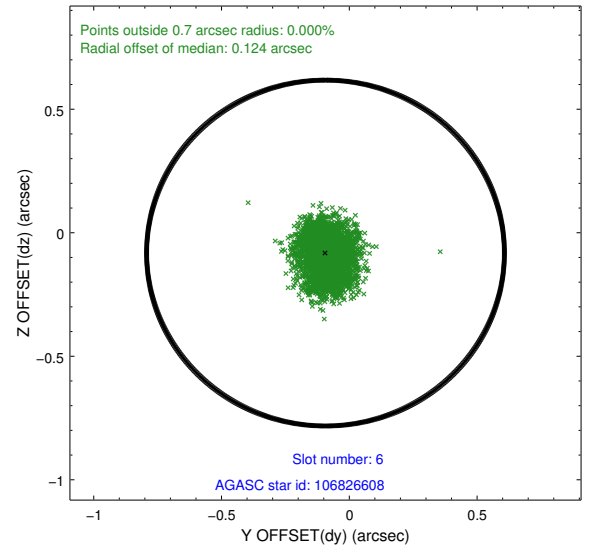
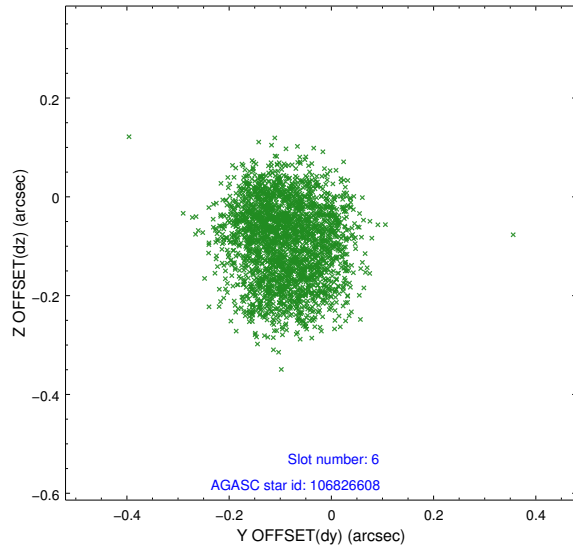
2.4.3 Slot 5



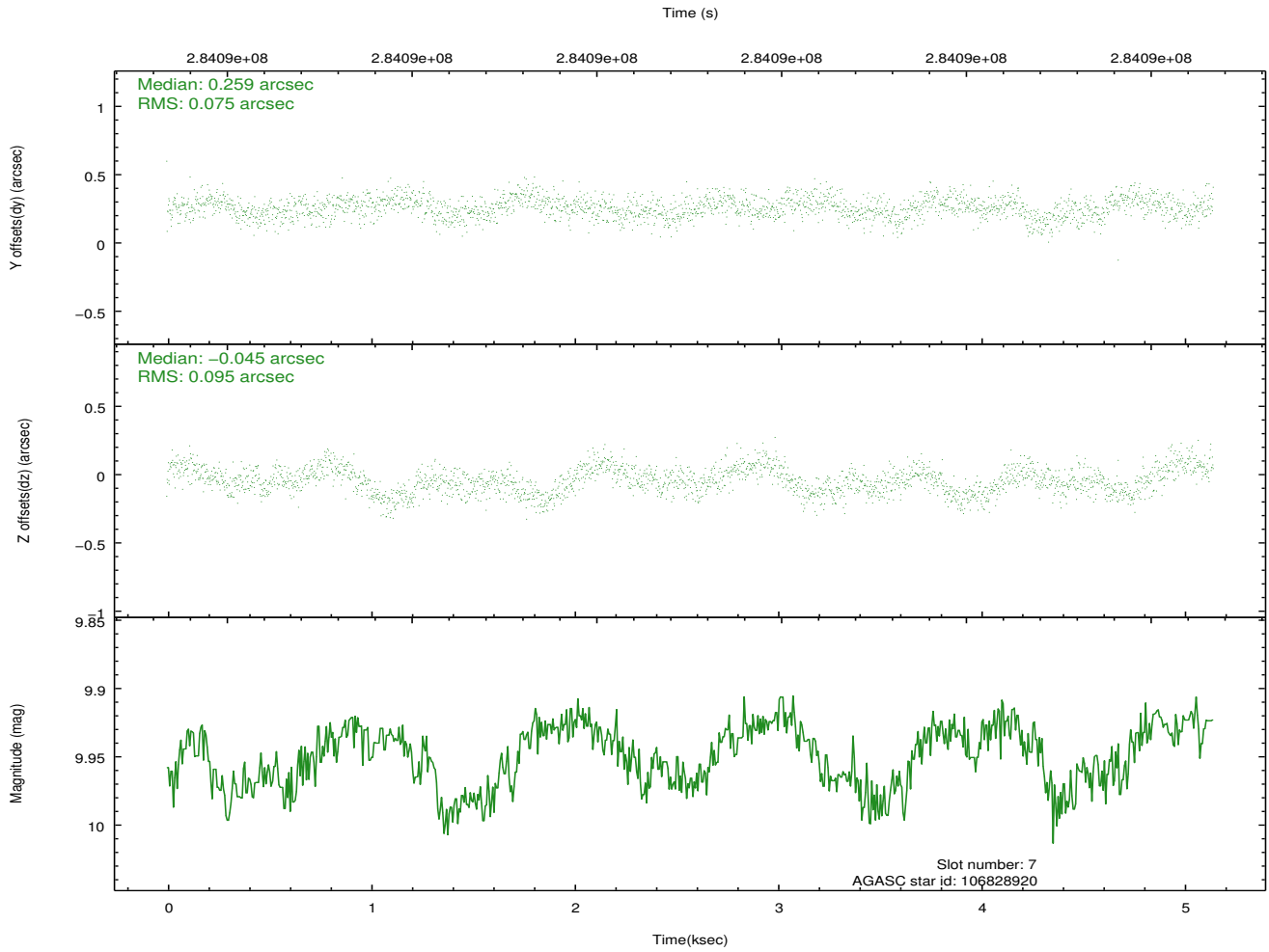
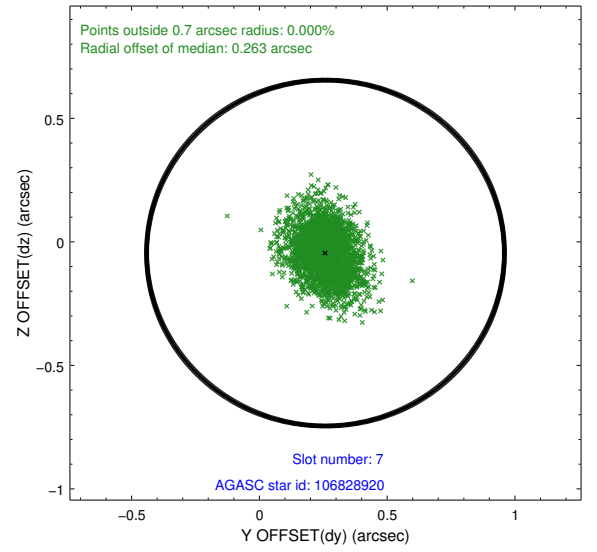
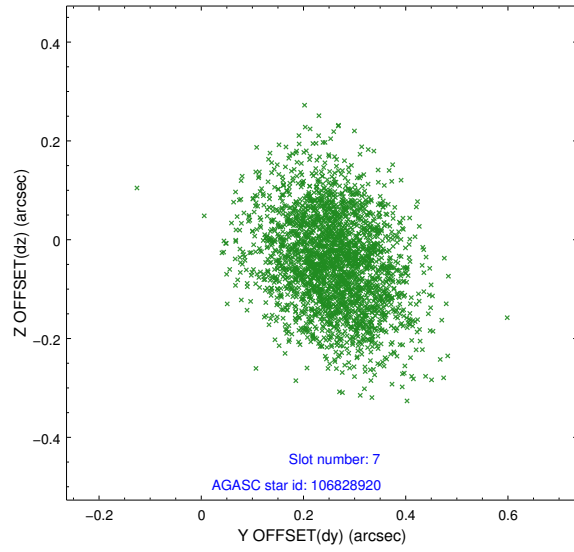
Time (s)



2.4.4 Slot 6

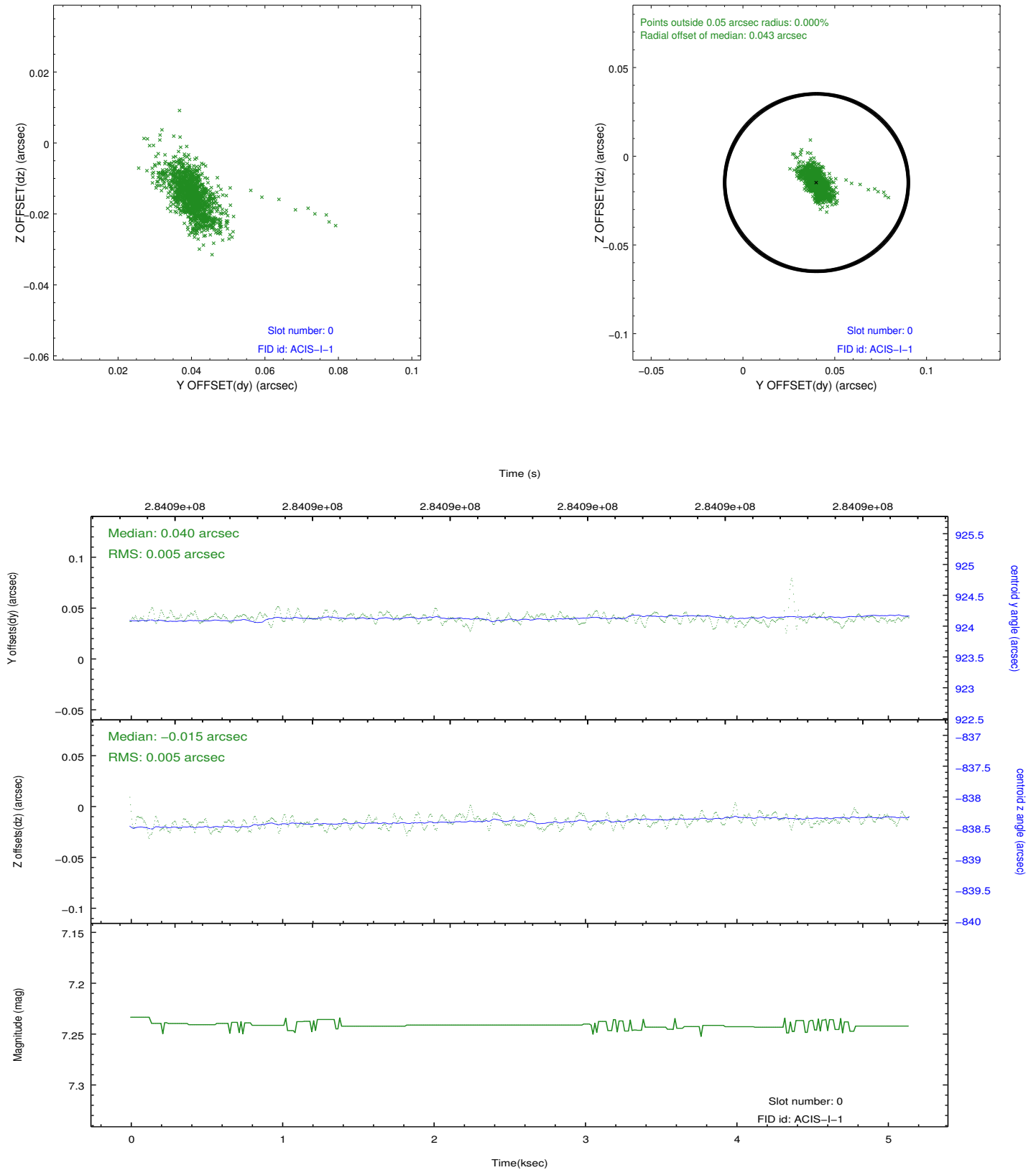


2.4.5 Slot 7

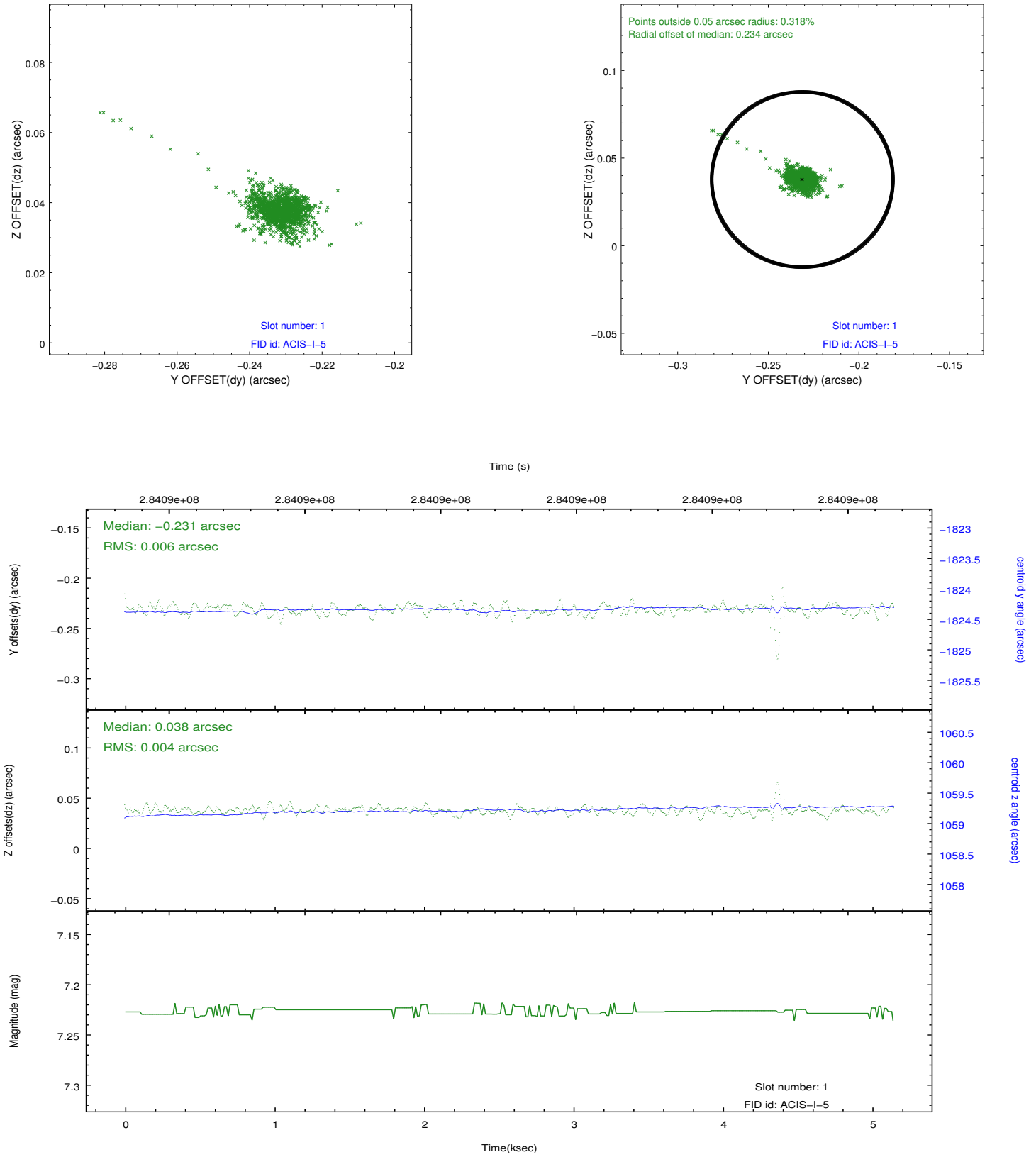


2.5 FID Slots

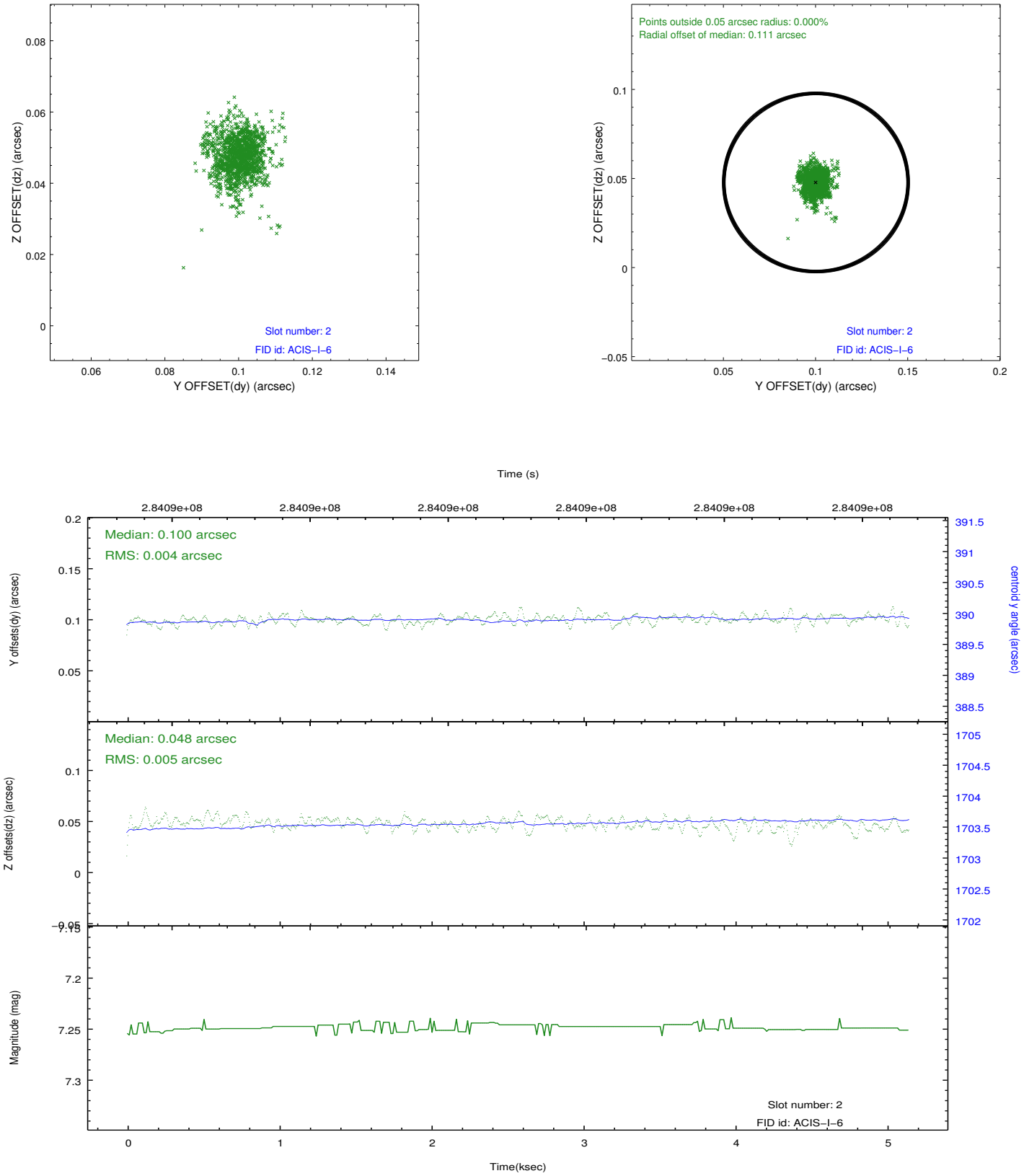
2.5.1 Slot 0



2.5.2 Slot 1



2.5.3 Slot 2



A Summary

A.1 Status

V&V Scientist	Jen Lauer
V&V Date (YYYY-MM-DD)	2012.04.19
V&V Edition	1
V&V Disposition and Status	OK
V&V Charge Time	4.77710003

A.2 Comments