

V&V Reference Report

L2 ASCDS Version : 8.4.3

Observation 7239 - L2 Version 2
Chandra X-Ray Center

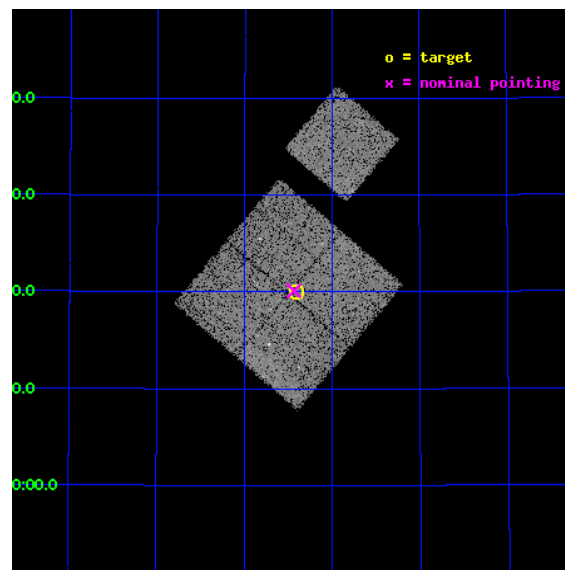
L2 Processing Date : Mar 20 2012

Contents

1	Front	2
2	OBI	3
2.1	OBI	3
2.1.1	Images	3
2.1.2	Bias	3
2.1.3	Parameters	4
2.1.4	Events	4
2.2	Compared Parameters	5
2.3	Aspect	6
2.4	Star Slots	9
2.4.1	Slot 3	9
2.4.2	Slot 4	10
2.4.3	Slot 5	11
2.4.4	Slot 6	12
2.4.5	Slot 7	13
2.5	FID Slots	14
2.5.1	Slot 0	14
2.5.2	Slot 1	15
2.5.3	Slot 2	16
A	Summary	17
A.1	Status	17
A.2	Comments	17

1 Front

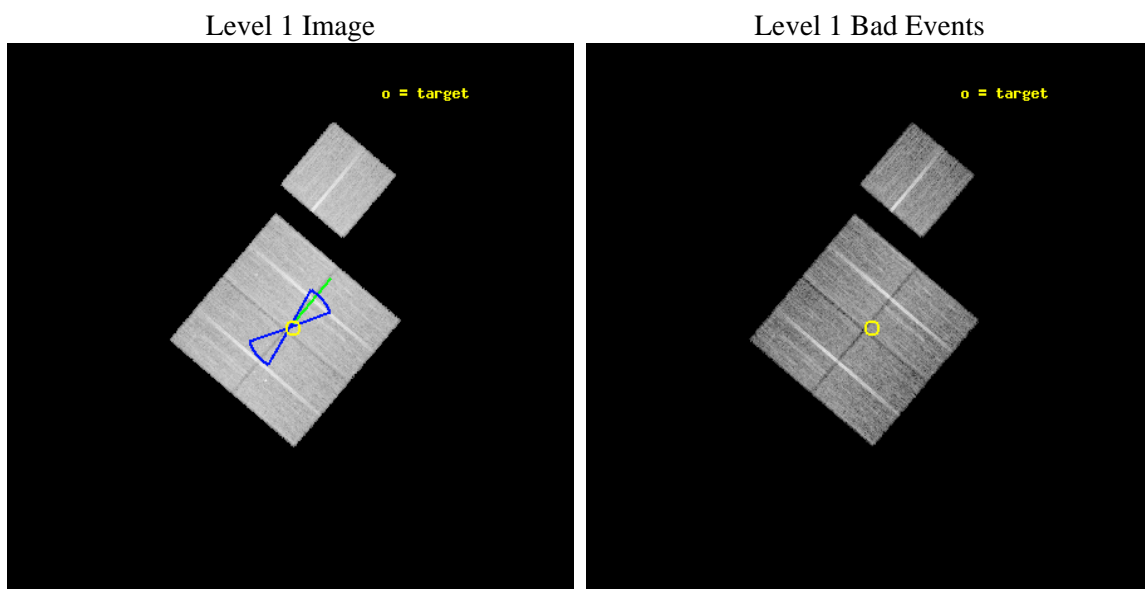
seq_num	900353	Sequence number
obs_id	7239	Observation id
title	Deep Chandra Imaging of the Extended Groth Strip: The Co-evolution of Black Holes and Galaxies	Proposal title
observer	Prof Kirpal Nandra	Principal investigator
object	EGS-6	Source name
dtcycle	0	
cycle	P	events from which exps? Prim/Second/Both
ra_targ	214.102079	Observer's specified target RA [deg]
dec_targ	52.334053	Observer's specified target Dec [deg]
ra_nom	214.10935585039	Nominal RA [deg]
dec_nom	52.335464039276	Nominal Dec [deg]
roll_nom	40.410425357154	Nominal Roll [deg]
revision	2	Processing version of data
ontime	16237.799968749	Sum of GTIs [s]
livetime	16025.641158063	Livetime [s]
ontime0	16234.65899846	Sum of GTIs [s]
ontime1	16234.658968598	Sum of GTIs [s]
ontime2	16231.518018275	Sum of GTIs [s]
ontime3	16237.799968749	Sum of GTIs [s]
ontime6	16231.518018246	Sum of GTIs [s]
l2events	46461	Number of level 2 events



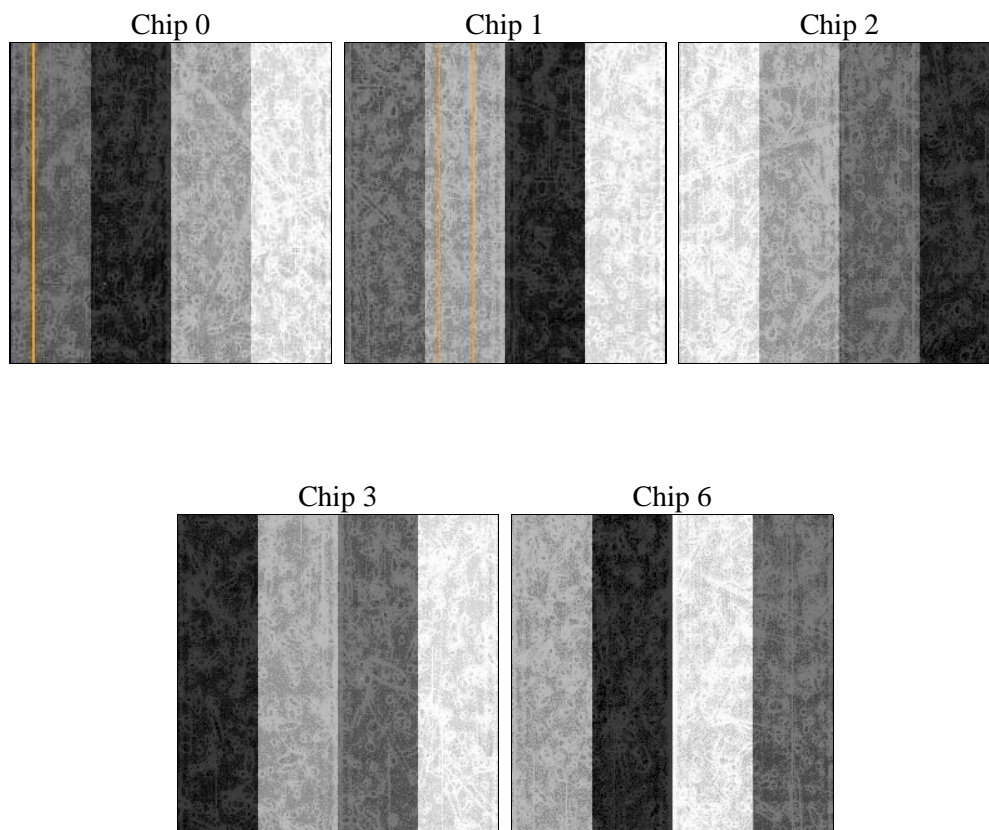
2 OBI

2.1 OBI

2.1.1 Images



2.1.2 Bias



2.1.3 Parameters

obi_num	0	Obi number	sched_exp_time	16100.000000	[s] Scheduled observation exposure time
ascdsver	8.4.3	Processing system revision	ontime	16237.799968749	Sum of GTIs [s]
caldbver	4.4.8	 	ontime0	16234.65899846	Sum of GTIs [s]
date	2012-03-20T02:08:27	Date and time of file creation	ontime1	16234.658968598	Sum of GTIs [s]
revision	2	Processing version of data	ontime2	16231.518018275	Sum of GTIs [s]
			ontime3	16237.799968749	Sum of GTIs [s]
			ontime6	16231.518018246	Sum of GTIs [s]
			l1events	555699	Number of level 1 events

2.1.4 Events

	ccd 0	ccd 1	ccd 2	ccd 3	ccd 6
level 1 events	105346	106200	121108	111270	111775
rejected events	94187	93644	110453	100718	100658
rejected %	89%	88%	91%	90%	90%

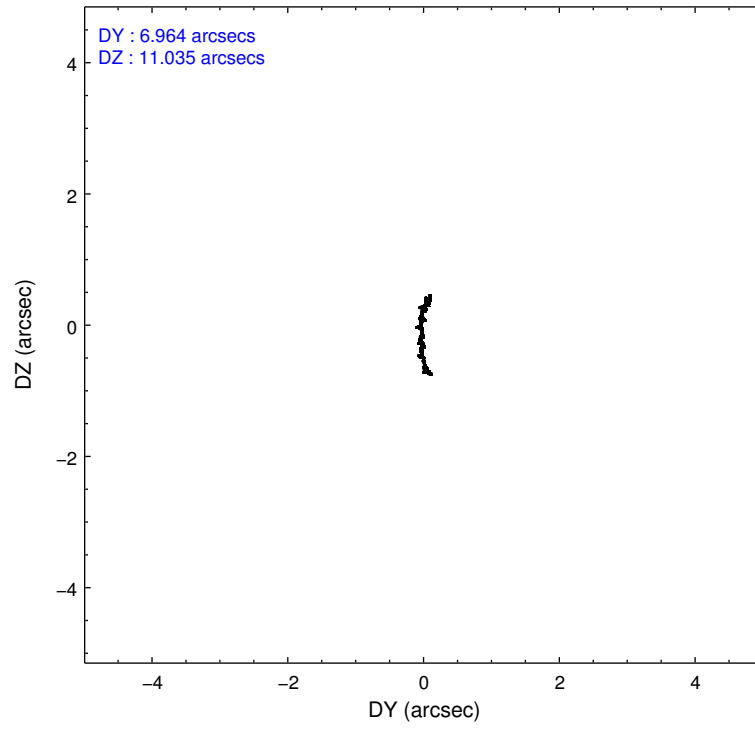
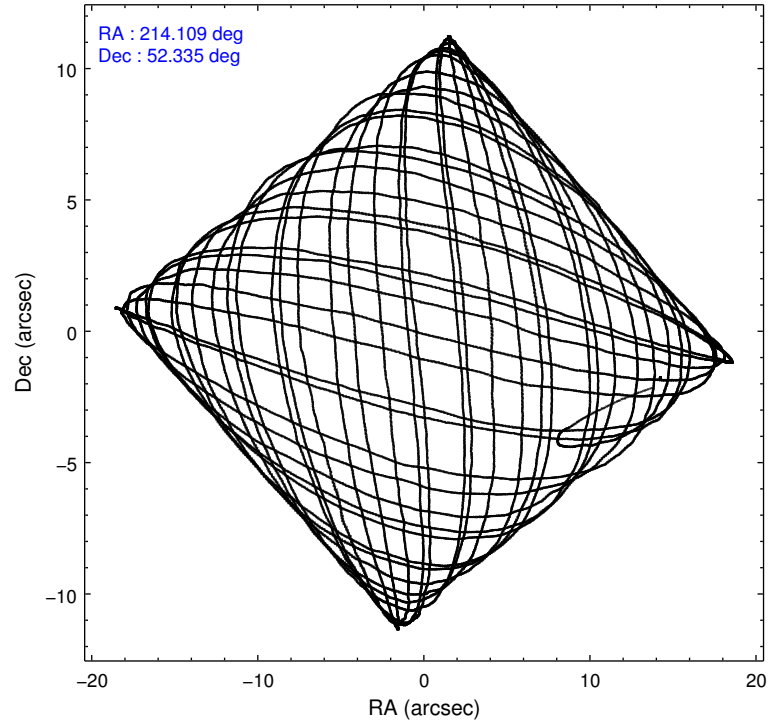
	ccd 0	ccd 1	ccd 2	ccd 3	ccd 6
grade 0 events	3971	4728	3893	3897	3880
	3%	4%	3%	3%	3%
grade 1 events	58	43	59	61	62
	0%	0%	0%	0%	0%
grade 2 events	2665	2750	2586	2360	2433
	2%	2%	2%	2%	2%
grade 3 events	1337	1409	1178	1219	1313
	1%	1%	0%	1%	1%
grade 4 events	1181	1319	1182	1145	1252
	1%	1%	0%	1%	1%
grade 5 events	3707	4297	3583	4441	4471
	3%	4%	2%	3%	4%
grade 6 events	2165	2497	1972	2048	2402
	2%	2%	1%	1%	2%
grade 7 events	90262	89157	106655	96099	95962
	85%	83%	88%	86%	85%

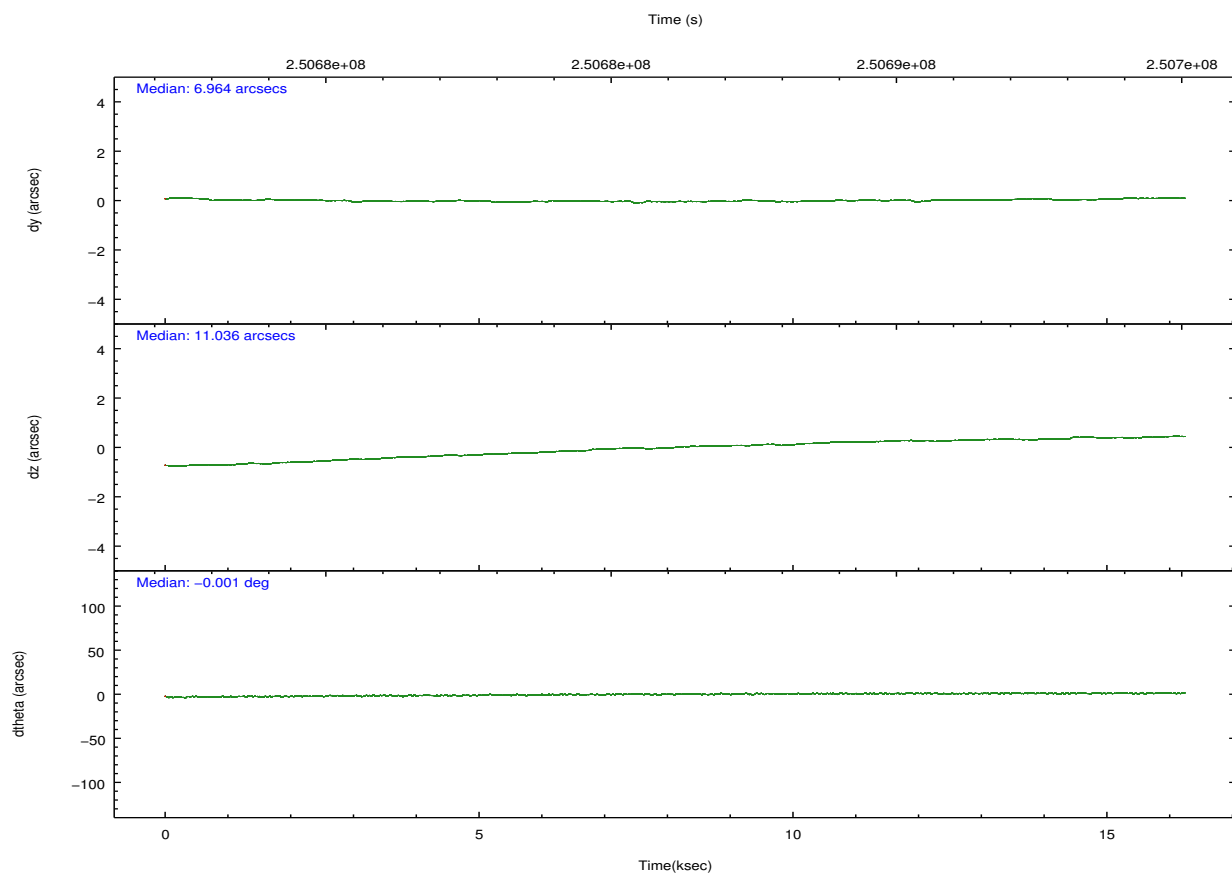
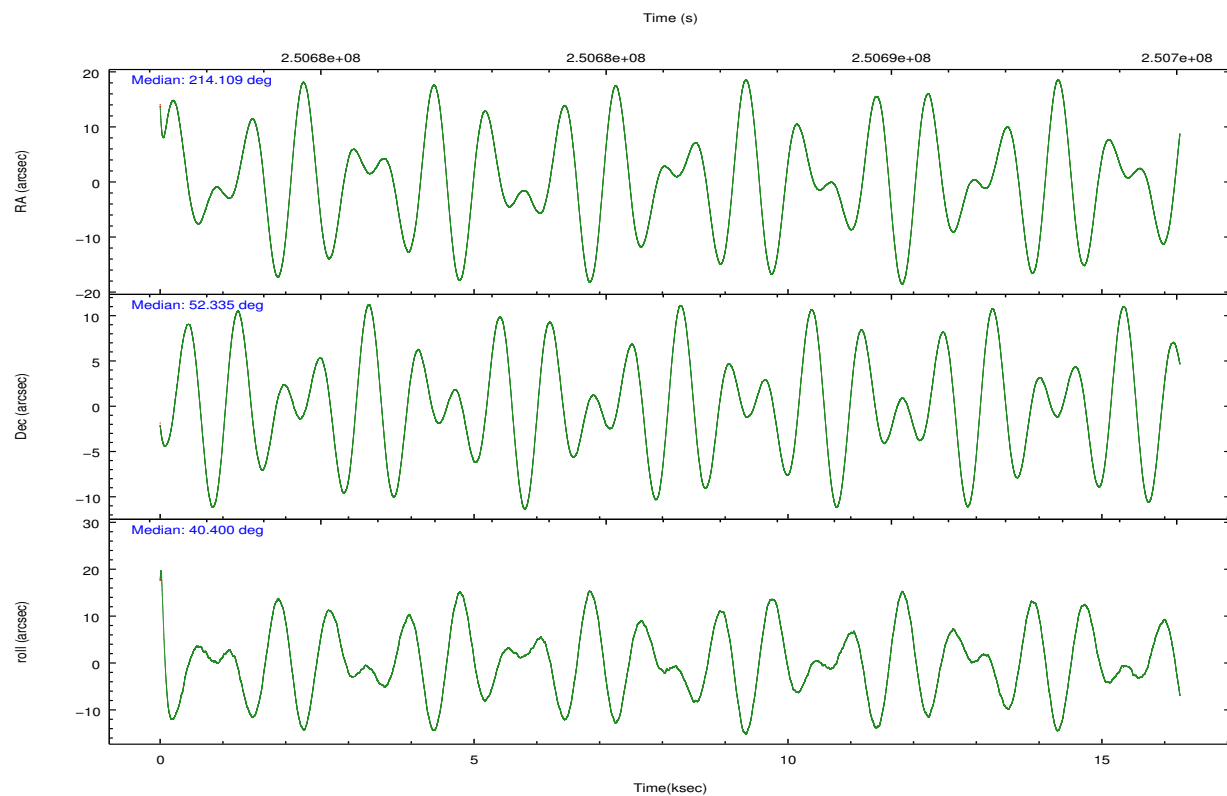
2.2 Compared Parameters

Parameter	Planned	Actual
Instrument	ACIS	ACIS
Detector	ACIS-01236	ACIS-01236
Grating	NONE	NONE
Data mode	VFAINT	VFAINT
Observation mode	POINTING	POINTING
[deg] Pointing RA	214.094463	214.1093558503927
[deg] Pointing Dec	52.309603	52.33546403927599
[deg] Pointing Roll	40.213506	40.41042535715437
[deg] Roll angle	50.756000	50.756000
[deg] Roll tolerance	20.000000	20.000000
Roll constraint allows 180D rotation	Y	Y
[mm] SIM focus pos	-0.782348	-0.7809083437167272
[mm] SIM defocus	0	0.001439871863259334
[mm] SIM translation stage pos	-233.592463	-233.5874344608287
[mm] SIM translation stage offset	0	-0.005018542100998502
[s] Observation start time (MET)	250678143.184000	250677066.97089
Observation start date	2005-12-11T08:47:59	2005-12-11T08:31:06
[s] Observation end time (MET)	250694243.184000	250694992.68422
Observation end date	2005-12-11T13:16:19	2005-12-11T13:29:52
Read mode	TIMED	TIMED

Parameter	Planned	Actual
Obspar format version number	7	7
Obspar file type	PREDICTED	ACTUAL
Obspar update status	NONE	UPDATED
Number of optional ACIS chips dropped	0	0
On-chip summing requested	N	N
Subarray requested	NONE	NONE
Alternating exposures requested	N	N
[s] Primary exposure time	0.000000	3.1

2.3 Aspect

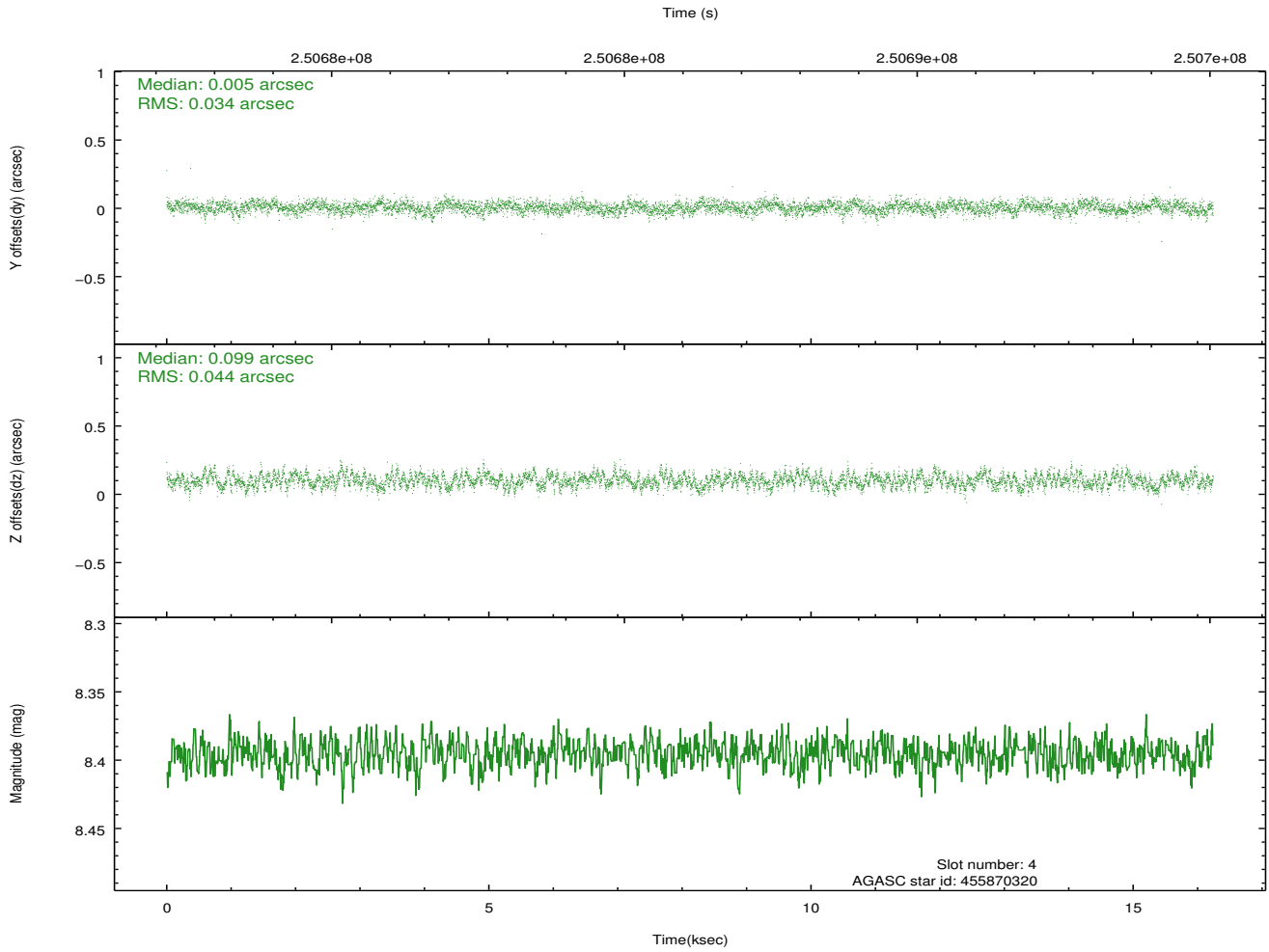
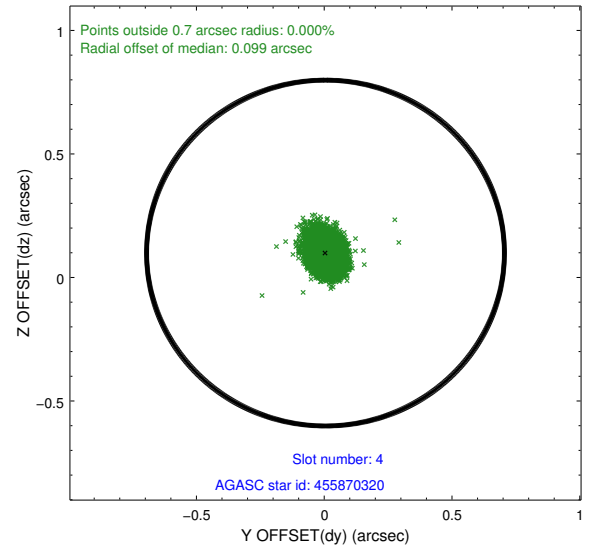
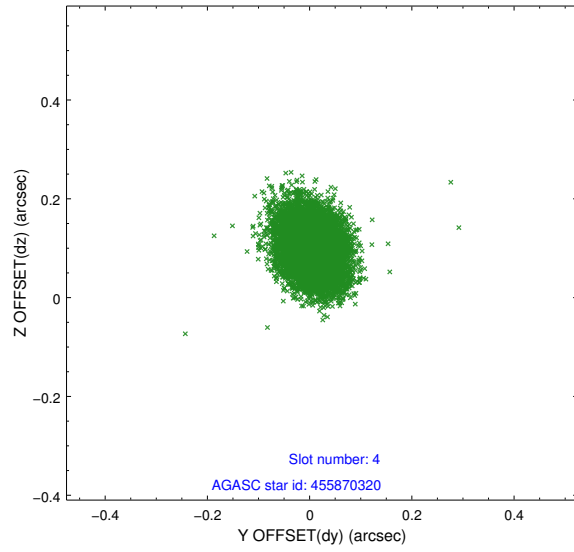




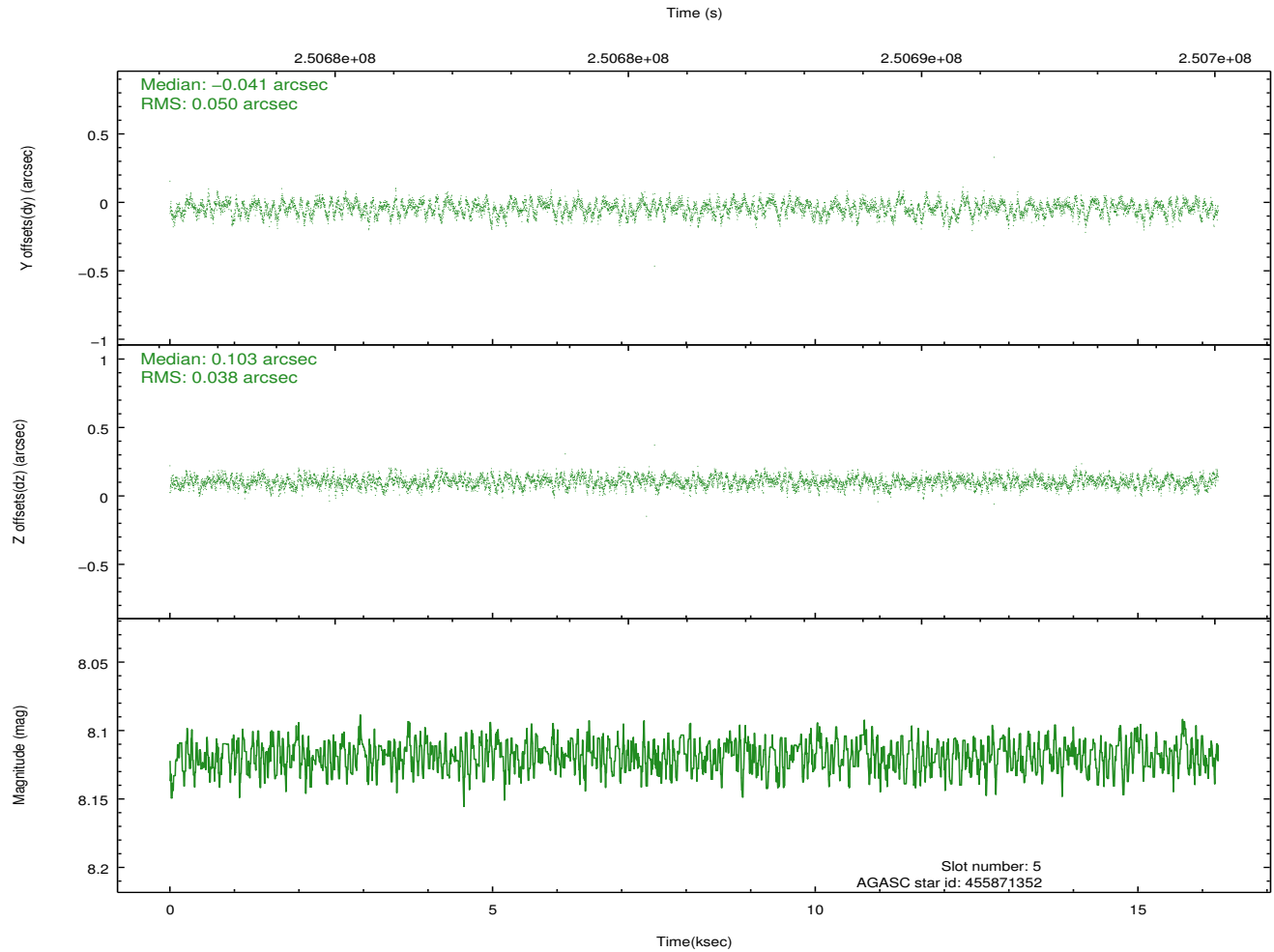
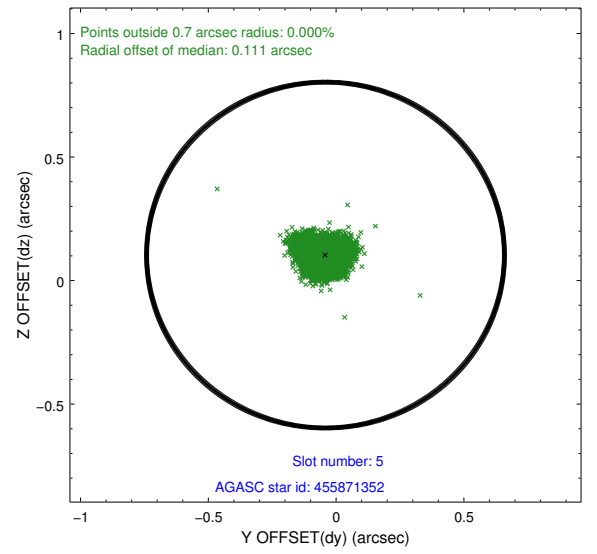
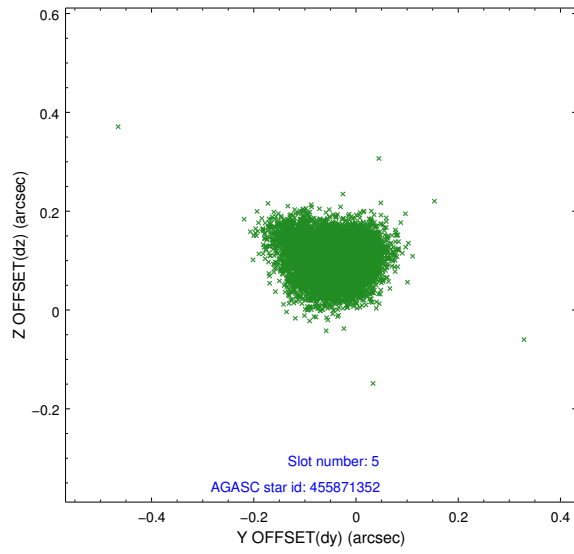
Slot Statistics

slot	status	id	mag	n_pts	med_dy	med_dz	dr1	dr2	ra	dec	mean_y	mean_z
0	FID	ACIS-I-1	7.24	3962	0.037	-0.023	0.015	0.029	0.000000	0.000000	932.73	-834.50
1	FID	ACIS-I-5	7.23	3962	-0.161	0.052	0.012	0.019	0.000000	0.000000	-1815.39	1062.97
2	FID	ACIS-I-6	7.25	3962	0.034	0.041	0.011	0.018	0.000000	0.000000	398.03	1707.73
3	GUIDE	455870296	7.31	7924	-0.011	0.097	0.058	0.094	214.629779	52.033323	266.50	-1521.44
4	GUIDE	455870320	8.40	7923	0.005	0.099	0.059	0.095	214.874440	52.401638	1528.49	-845.87
5	GUIDE	455871352	8.12	7921	-0.041	0.103	0.066	0.107	215.099961	52.172669	1387.59	-1797.65
6	GUIDE	505812376	7.59	7924	-0.258	-0.062	0.053	0.086	214.039537	52.937930	1369.24	1804.36
7	GUIDE	504894728	8.82	7920	0.304	-0.234	0.081	0.125	213.220892	52.722550	-487.09	2373.75

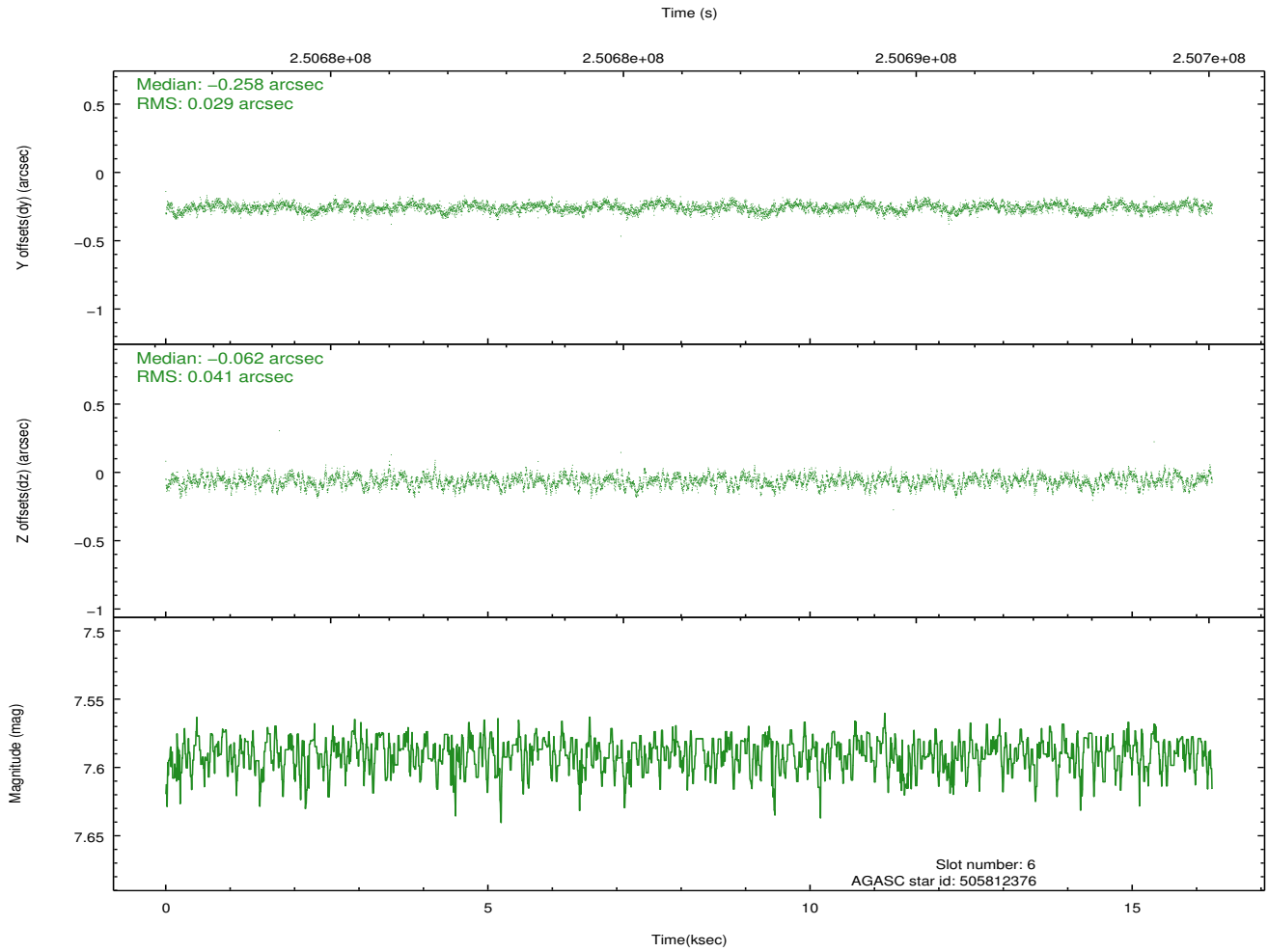
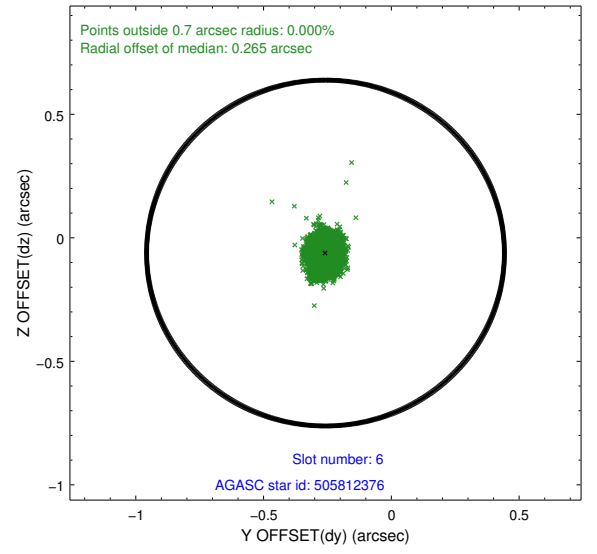
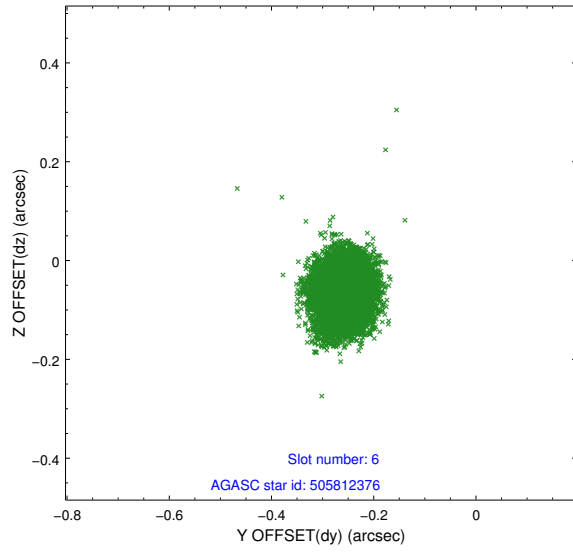
2.4.2 Slot 4



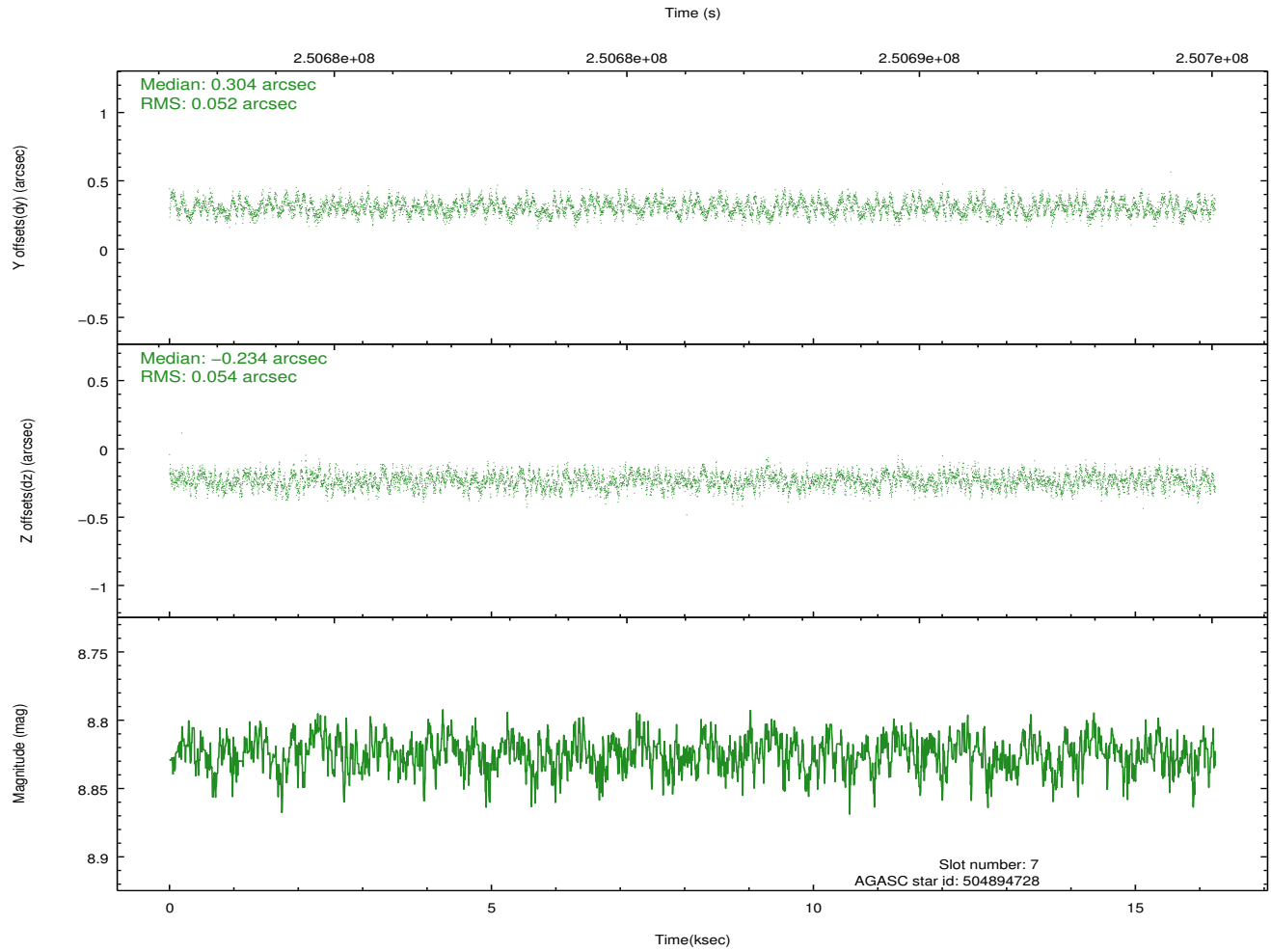
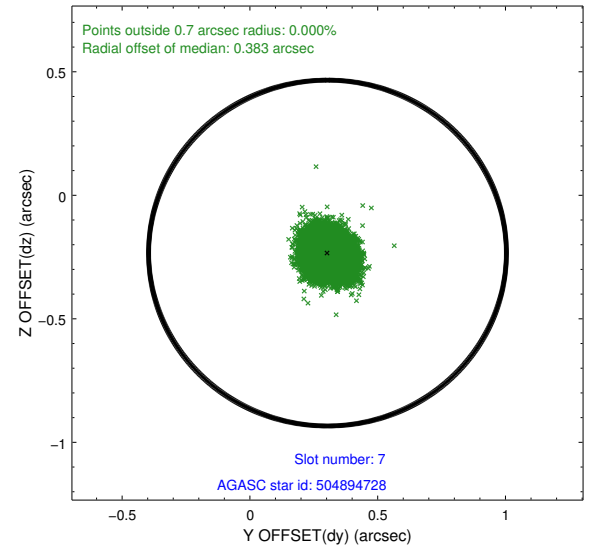
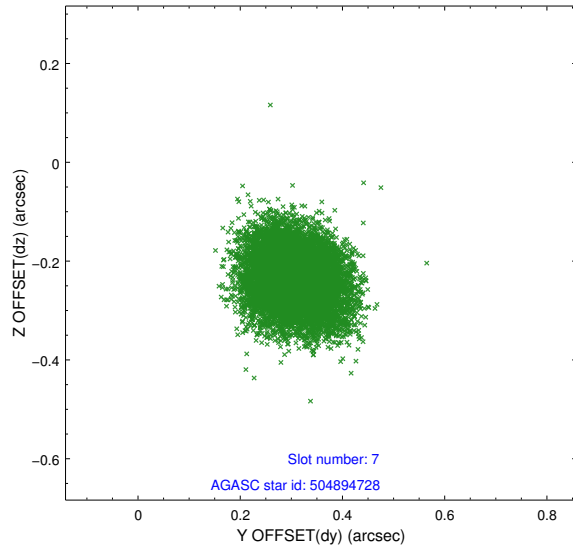
2.4.3 Slot 5



2.4.4 Slot 6

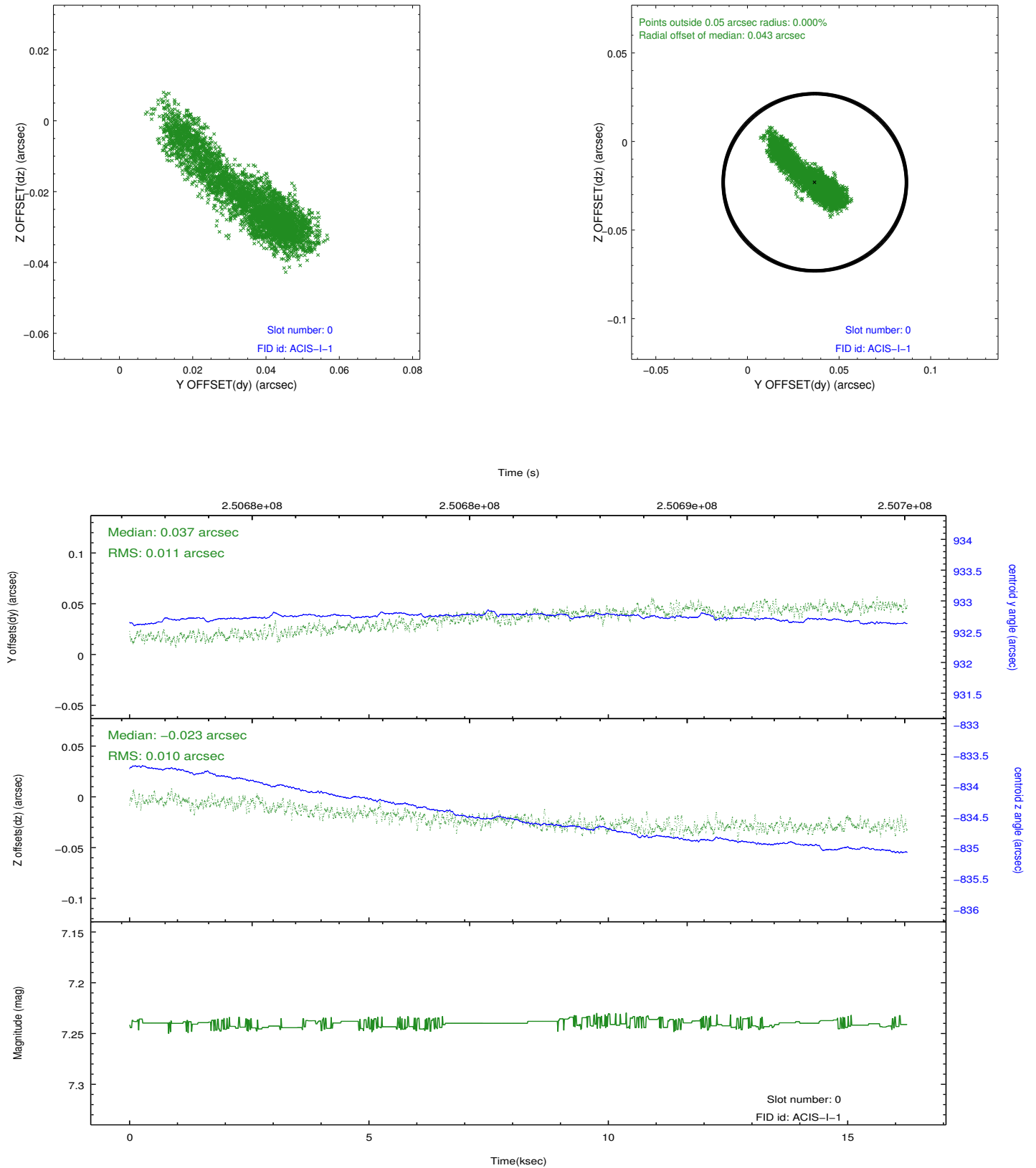


2.4.5 Slot 7

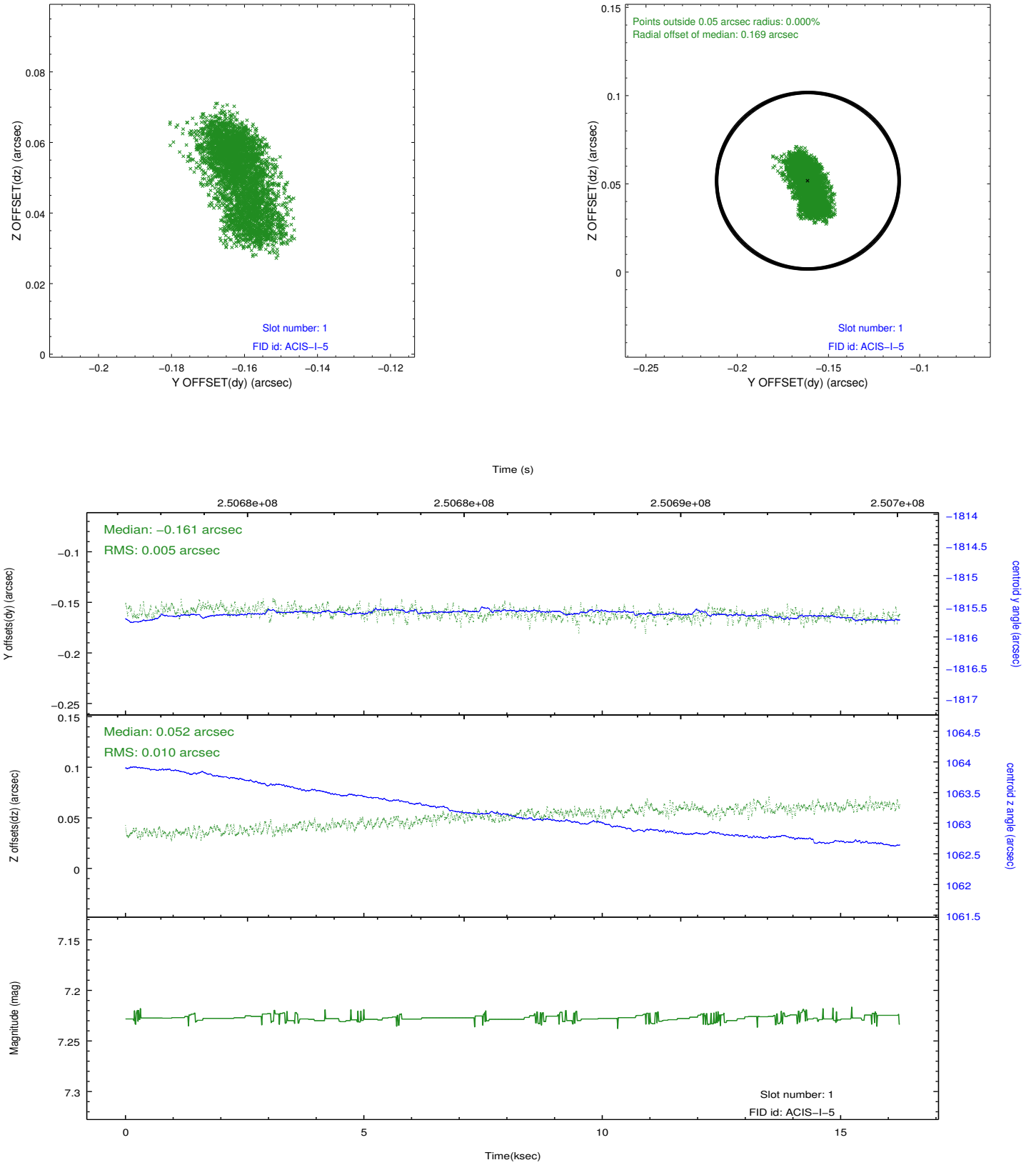


2.5 FID Slots

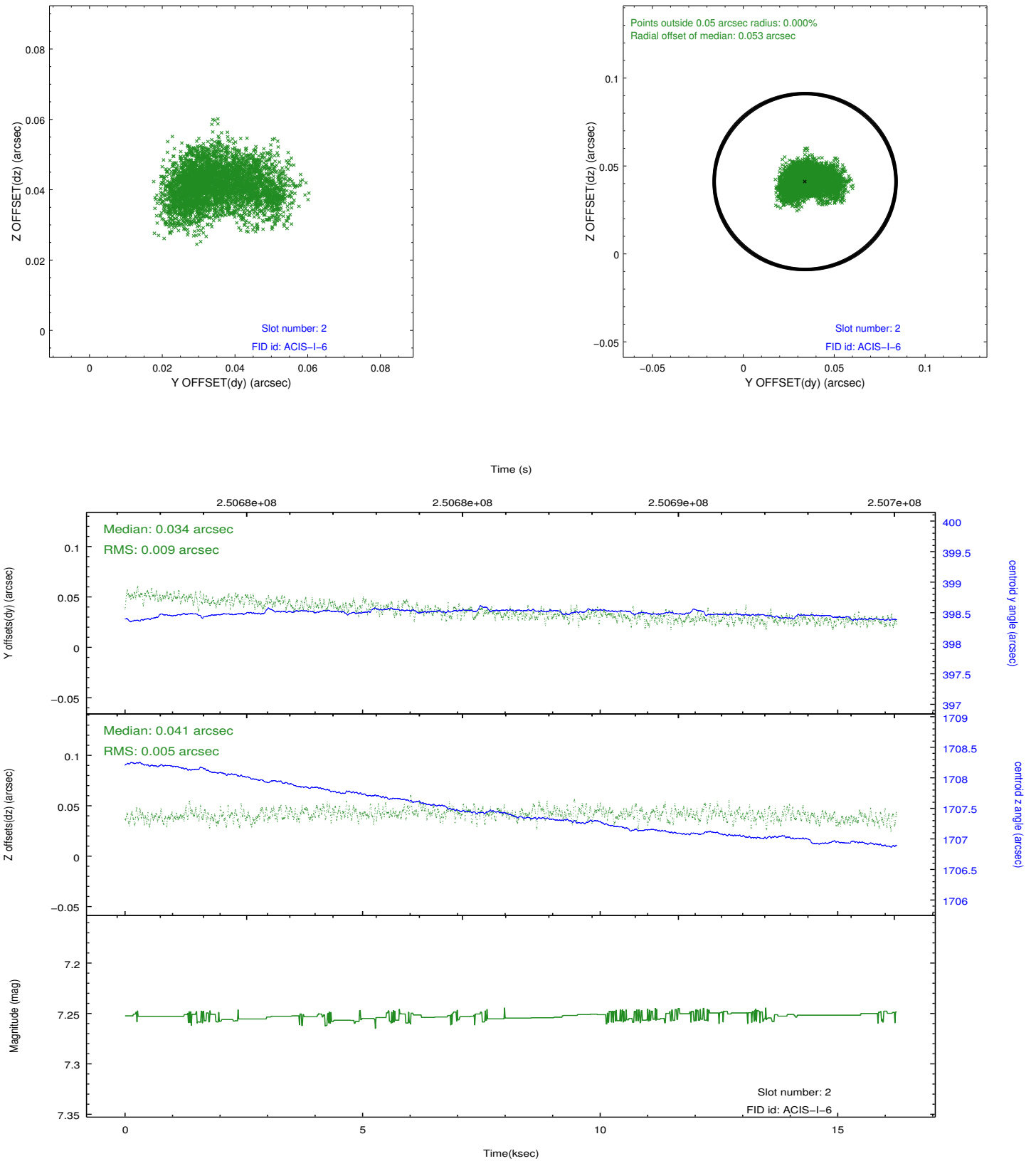
2.5.1 Slot 0



2.5.2 Slot 1



2.5.3 Slot 2



A Summary

A.1 Status

V&V Scientist	Jen Lauer
V&V Date (YYYY-MM-DD)	2012.03.20
V&V Edition	1
V&V Disposition and Status	OK
V&V Charge Time	16.23779

A.2 Comments

Roll constraint met.