

V&V Reference Report

L2 ASCDS Version : 8.1.2

Observation 62549 - L2 Version 4
Chandra X-Ray Center

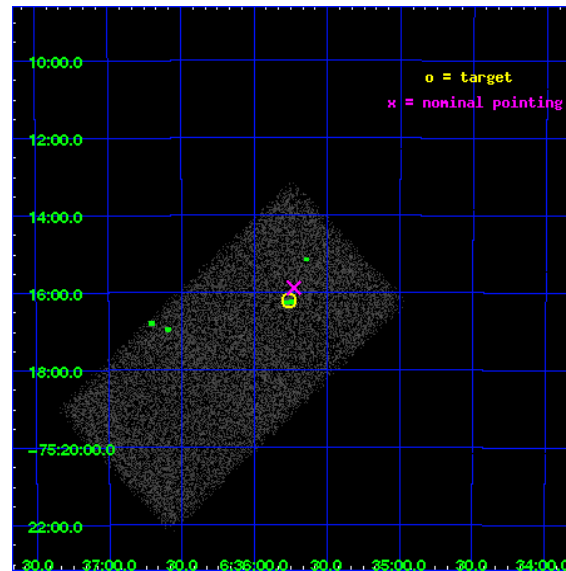
L2 Processing Date : Dec 14 2009

Contents

1	Front	2
2	OBI	3
2.1	OBI	3
2.1.1	Images	3
2.1.2	Bias	3
2.1.3	Parameters	4
2.1.4	Events	4
2.2	Compared Parameters	5
2.3	Aspect	6
2.4	Star Slots	9
2.4.1	Slot 3	9
2.4.2	Slot 4	10
2.4.3	Slot 5	11
2.4.4	Slot 6	12
2.4.5	Slot 7	13
2.5	FID Slots	14
2.5.1	Slot 0	14
2.5.2	Slot 1	15
2.5.3	Slot 2	16
3	Point Sources	17
A	Summary	18
A.1	Status	18
A.2	Comments	18

1 Front

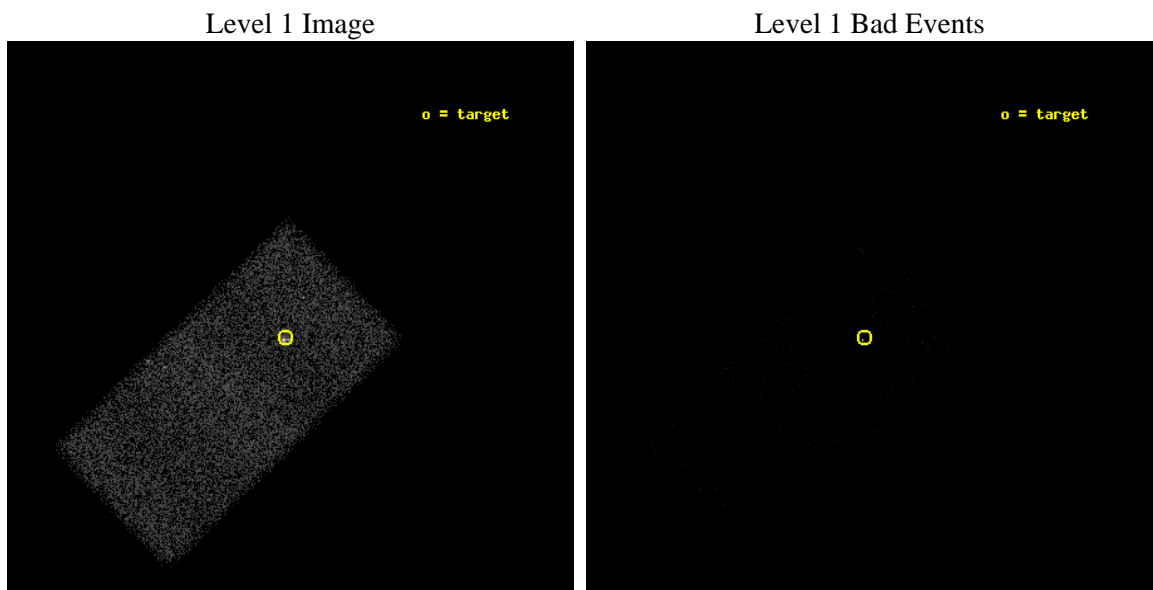
seq_num	780213	Sequence number
obs_id	62549	Observation id
title	ACIS Focus Test	Proposal title
observer	Dr. CXC Calibration	Principal investigator
object	PKS0637-752	Source name
dtcycle	0	
cycle	P	events from which exps? Prim/Second/Both
ra_targ	98.94	Observer's specified target RA
dec_targ	-75.27	Observer's specified target Dec
ra_nom	98.932321959632	Nominal RA
dec_nom	-75.264704933171	Nominal Dec
roll_nom	136.05481361691	Nominal Roll
revision	4	Processing version of data
ontime	6424.5	Sum of GTIs [s]
livetime	6253.4067902196	Livetime [s]
ontime7	6424.5	Sum of GTIs [s]
l2events	27848	Number of level 2 events



2 OBI

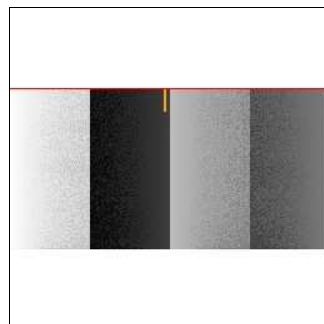
2.1 OBI

2.1.1 Images



2.1.2 Bias

Chip 7



2.1.3 Parameters

obi_num	1	Obi number	sched_exp_time	5000.000000	Scheduled observation exposure time
ascdsver	8.1.2	ASCDS version number	ontime	6424.5	Sum of GTIs [s]
caldbver	4.1.4	 	ontime7	6424.5	Sum of GTIs [s]
date	2009-12-14T06:21:14	Date and time of file creation	l1events	33516	Number of level 1 events
revision	4	Processing version of data			

2.1.4 Events

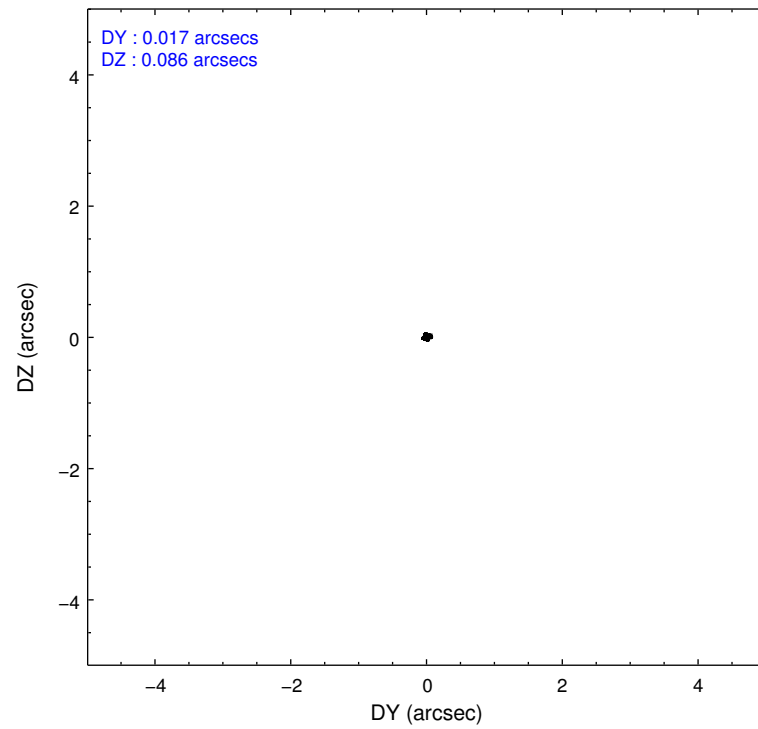
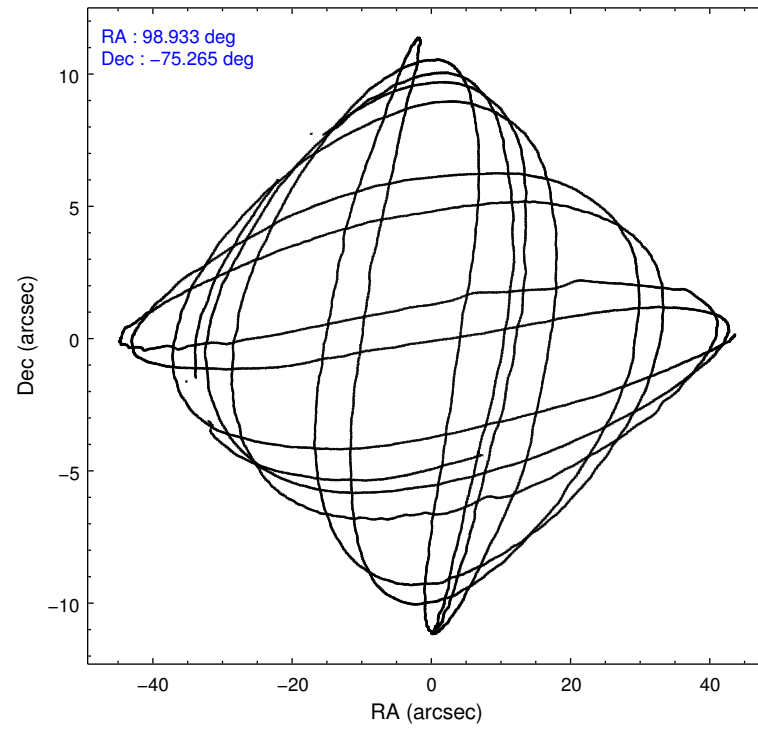
	ccd 7
level 1 events	33516
rejected events	4807
rejected %	14%

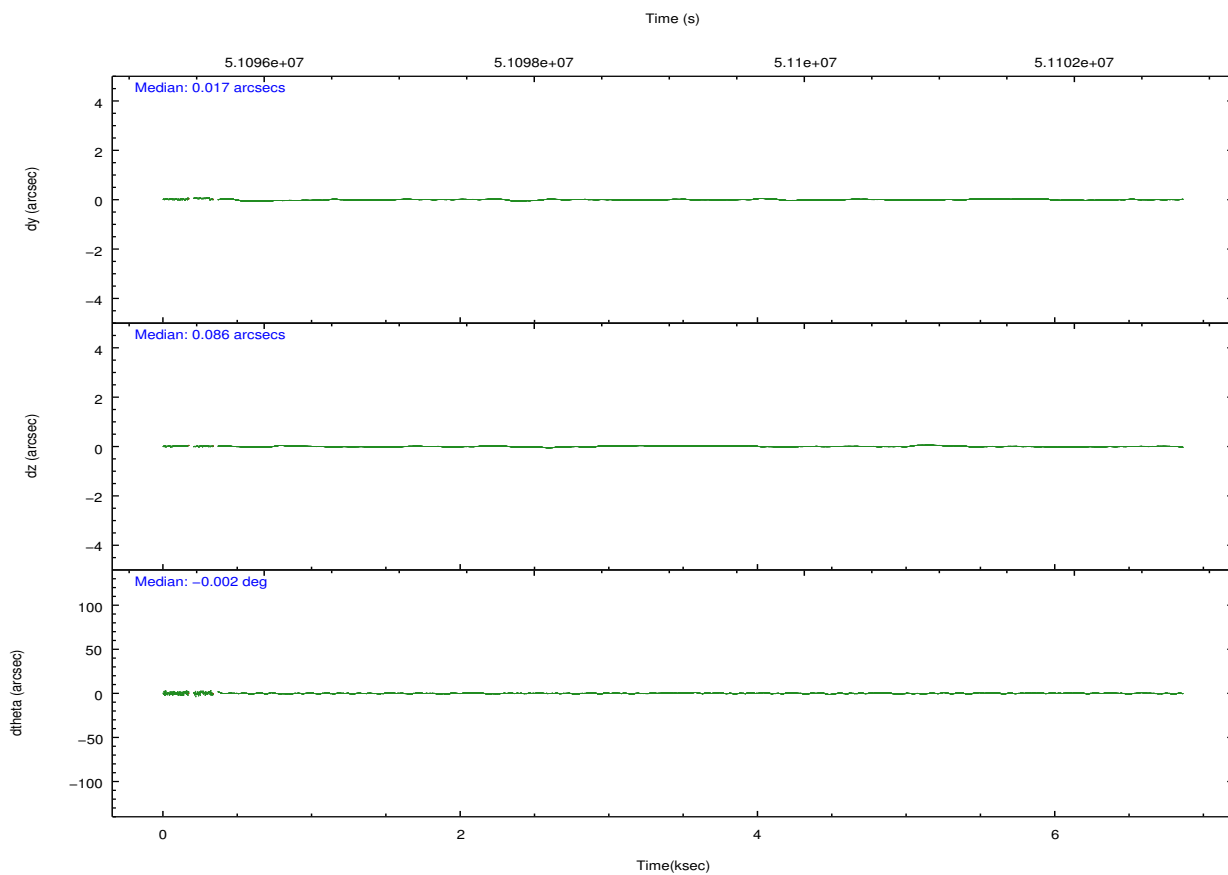
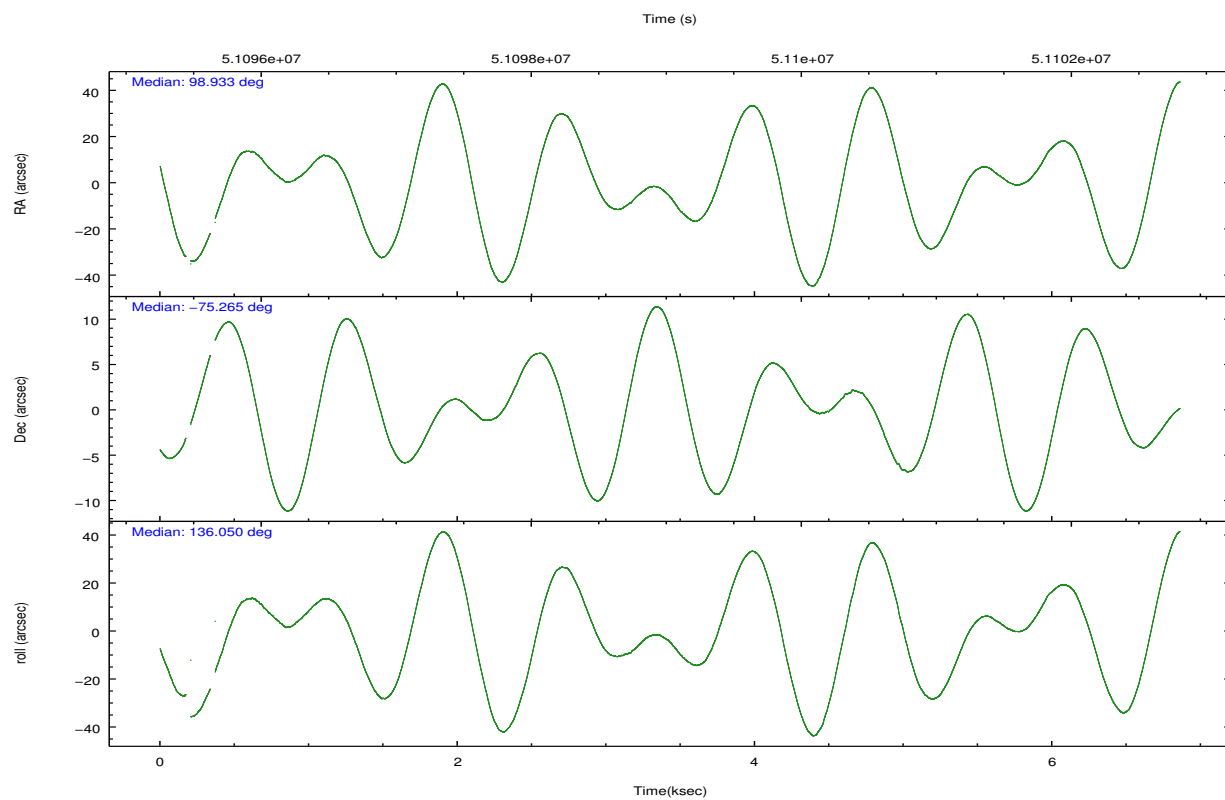
	ccd 7
grade 0 events	1963
	5%
grade 1 events	83
	0%
grade 2 events	3851
	11%
grade 3 events	2589
	7%
grade 4 events	2150
	6%
grade 5 events	4705
	14%
grade 6 events	18175
	54%
grade 7 events	0
	0%

2.2 Compared Parameters

Parameter	Planned	Actual	Parameter	Planned	Actual
Instrument	ACIS	ACIS	Obspar format version number	6	6
Detector	ACIS-7	ACIS-7	Obspar file type	PREDICTED	ACTUAL
Grating	NONE	NONE	Obspar update status	NONE	UPDATED
Data mode	FAINT	FAINT	Number of optional ACIS chips dropped	0	0
Observation mode	POINTING	POINTING	On-chip summing requested	N	N
Pointing RA	98.939999	98.93232195963162	Subarray requested	CUSTOM	1/2
Pointing Dec	-75.269994	-75.26470493317088	Subarray start row	256	256
Pointing Roll	136.083062	136.0548136169143	Subarray row count	512	512
SIM focus pos (mm)	-1.184267	-0.2430690701805422	Alternating exposures requested	N	N
SIM defocus (mm)	-0.5	0.441198391119354	Primary exposure time	0.000000	1.5
SIM translation stage pos (mm)	-190.132523	-190.1325231039672			
SIM translation stage offset (mm)	0	5.209593894051068e-07			
Observation start time	51097458.184000	51095596.689741			
Observation start date	1999-08-15T09:43:14	1999-08-15T09:13:16			
Observation end time	51102458.184000	51102548.752486			
Observation end date	1999-08-15T11:06:34	1999-08-15T11:09:08			
Read mode	TIMED	TIMED			

2.3 Aspect



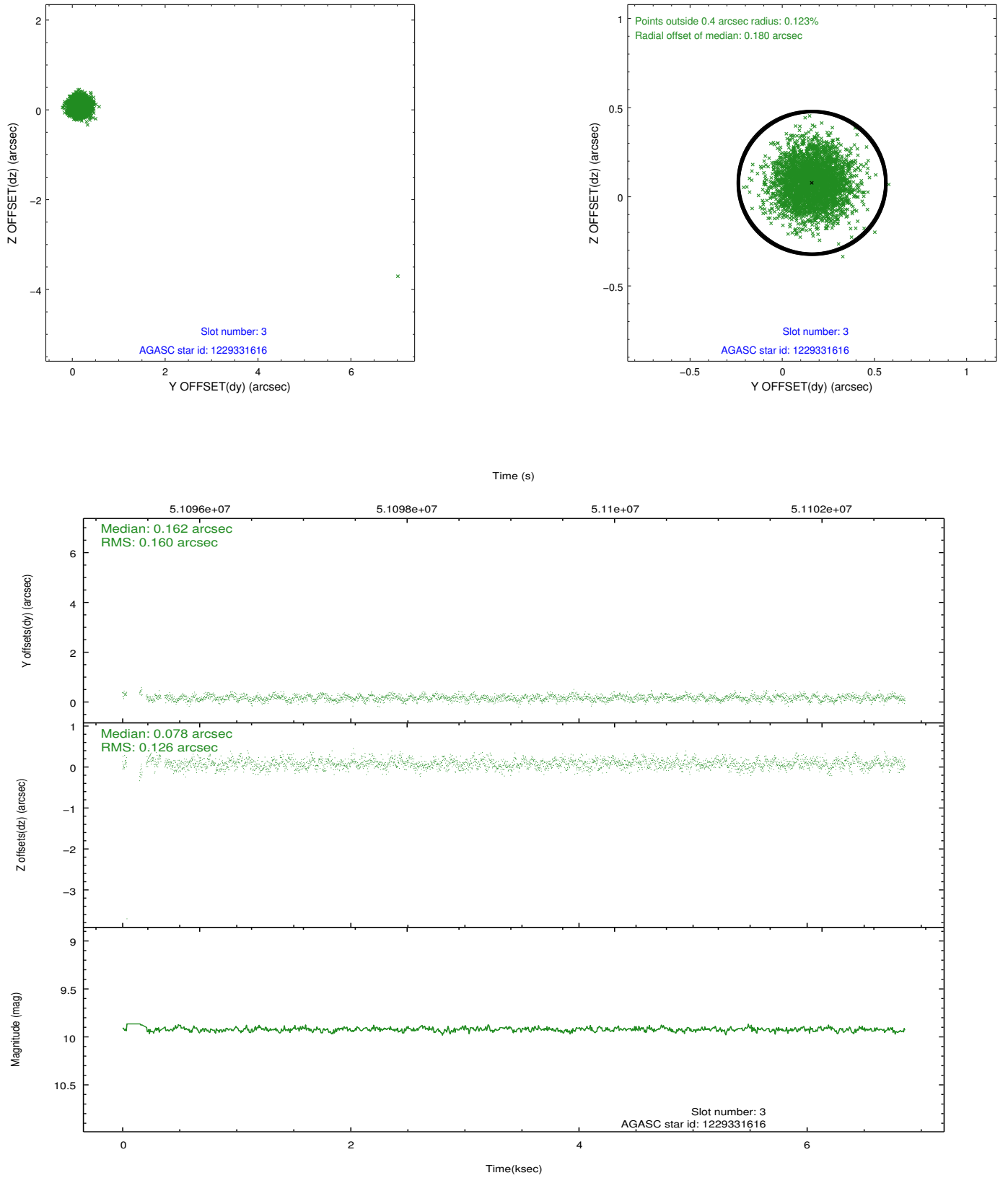


Slot Statistics

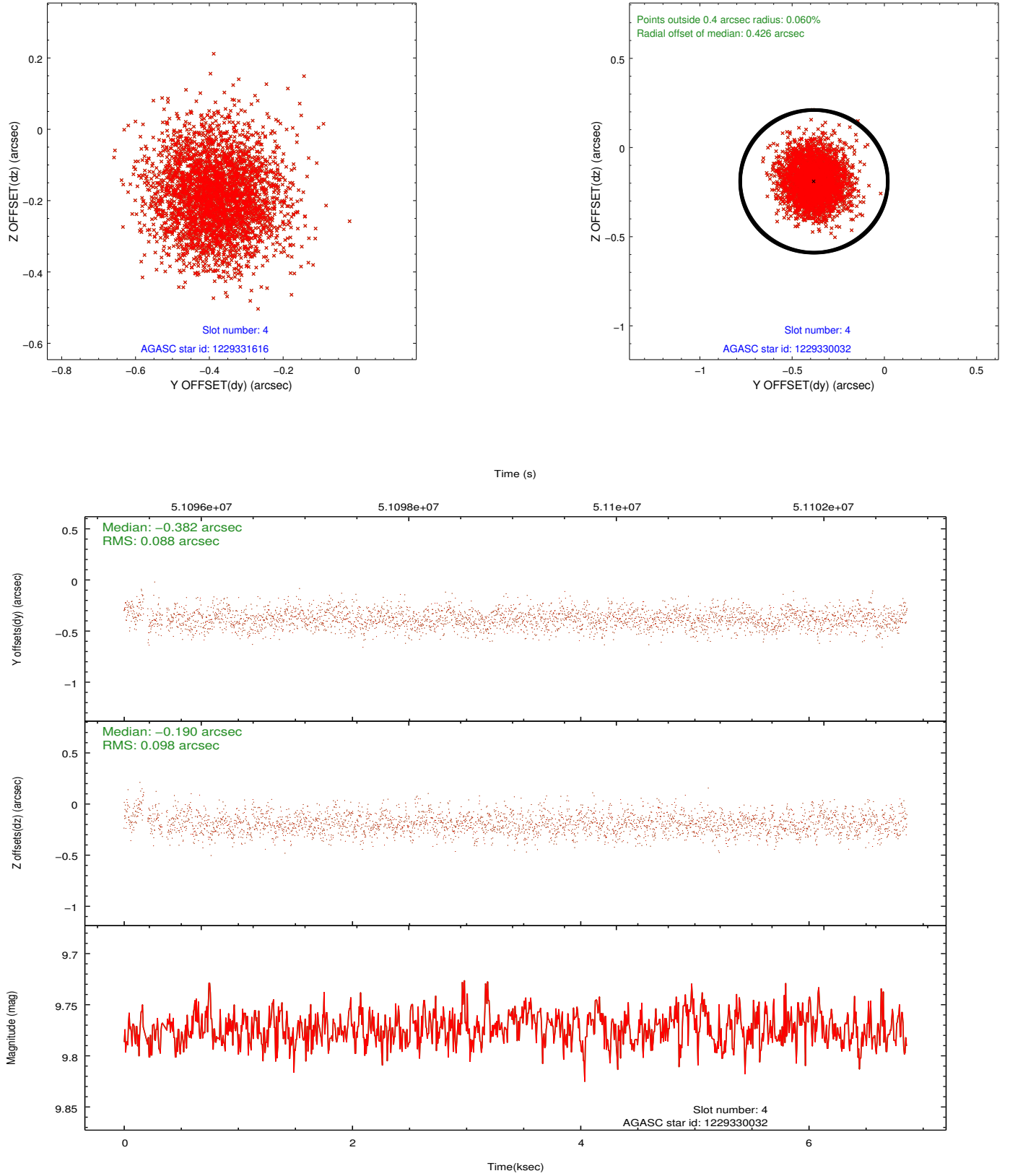
slot	status	id	mag	n_pts	med_dy	med_dz	dr1	dr2	ra	dec	mean_y	mean_z
0	FID	ACIS-S-2	7.13	3314	-0.037	-0.123	0.005	0.010	0.000000	0.000000	-752.70	-1721.34
1	FID	ACIS-S-3	7.12	3315	-0.062	-0.020	0.006	0.011	0.000000	0.000000	60.26	-1850.85
2	FID	ACIS-S-4	7.22	3315	0.110	0.040	0.004	0.010	0.000000	0.000000	2160.94	186.82
3	GUIDE	1229331616	9.92	3260	0.162	0.078	0.162	0.261	96.182998	-75.347362	1637.21	2046.15
4	BAD	1229330032	9.77	3313	-0.382	-0.190	0.141	0.226	98.721356	-75.139571	541.33	-138.30
5	GUIDE	1204423736	8.76	3313	0.301	0.041	0.081	0.132	99.272017	-74.796122	1031.12	-1385.23
6	BAD	1229457576	9.38	3311	-0.369	0.030	0.132	0.216	100.335360	-75.489746	-1394.89	-240.01
7	GUIDE	1229457032	9.21	3312	0.291	0.043	0.109	0.178	100.958417	-75.581890	-2032.85	-373.07

2.4 Star Slots

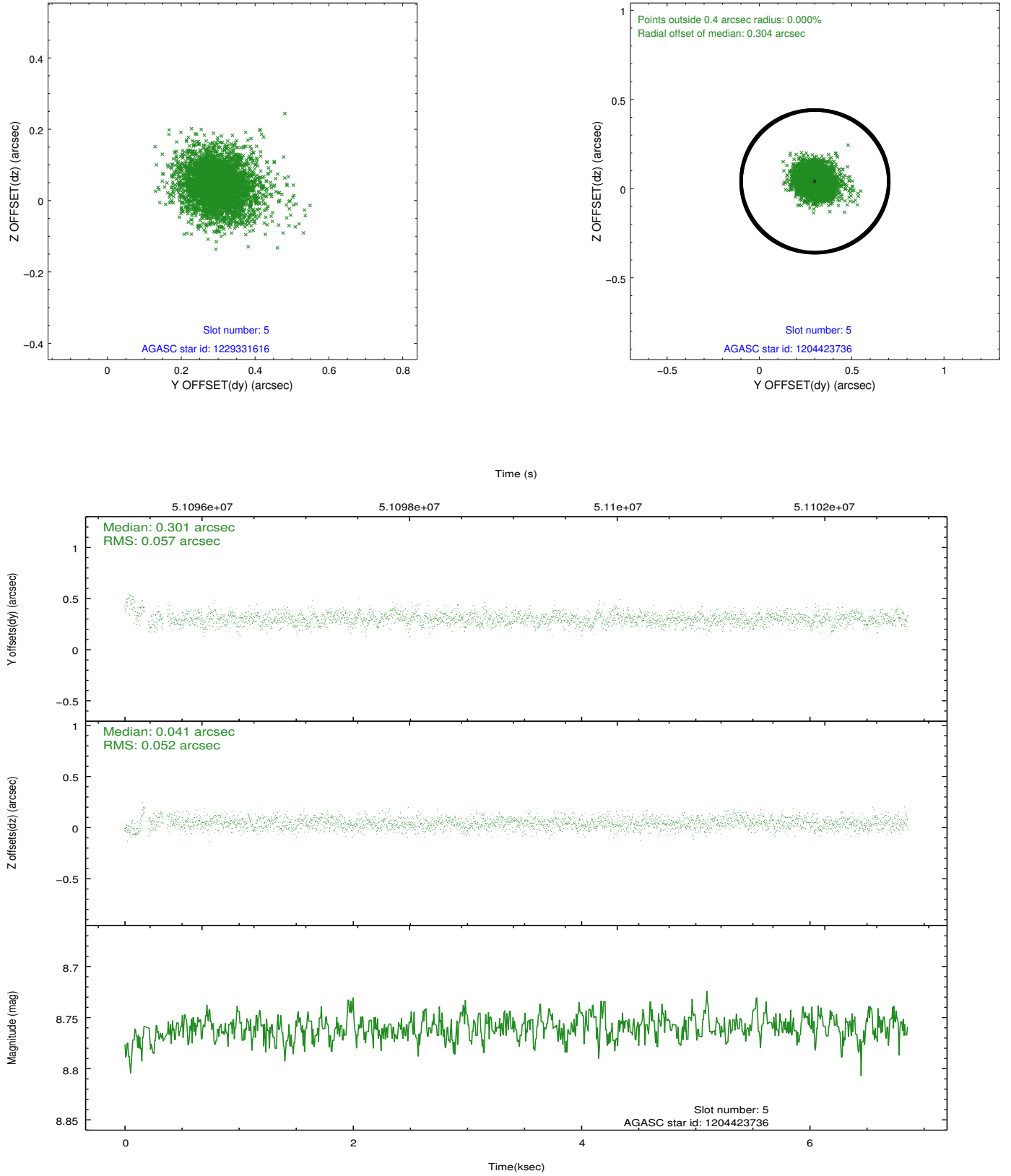
2.4.1 Slot 3



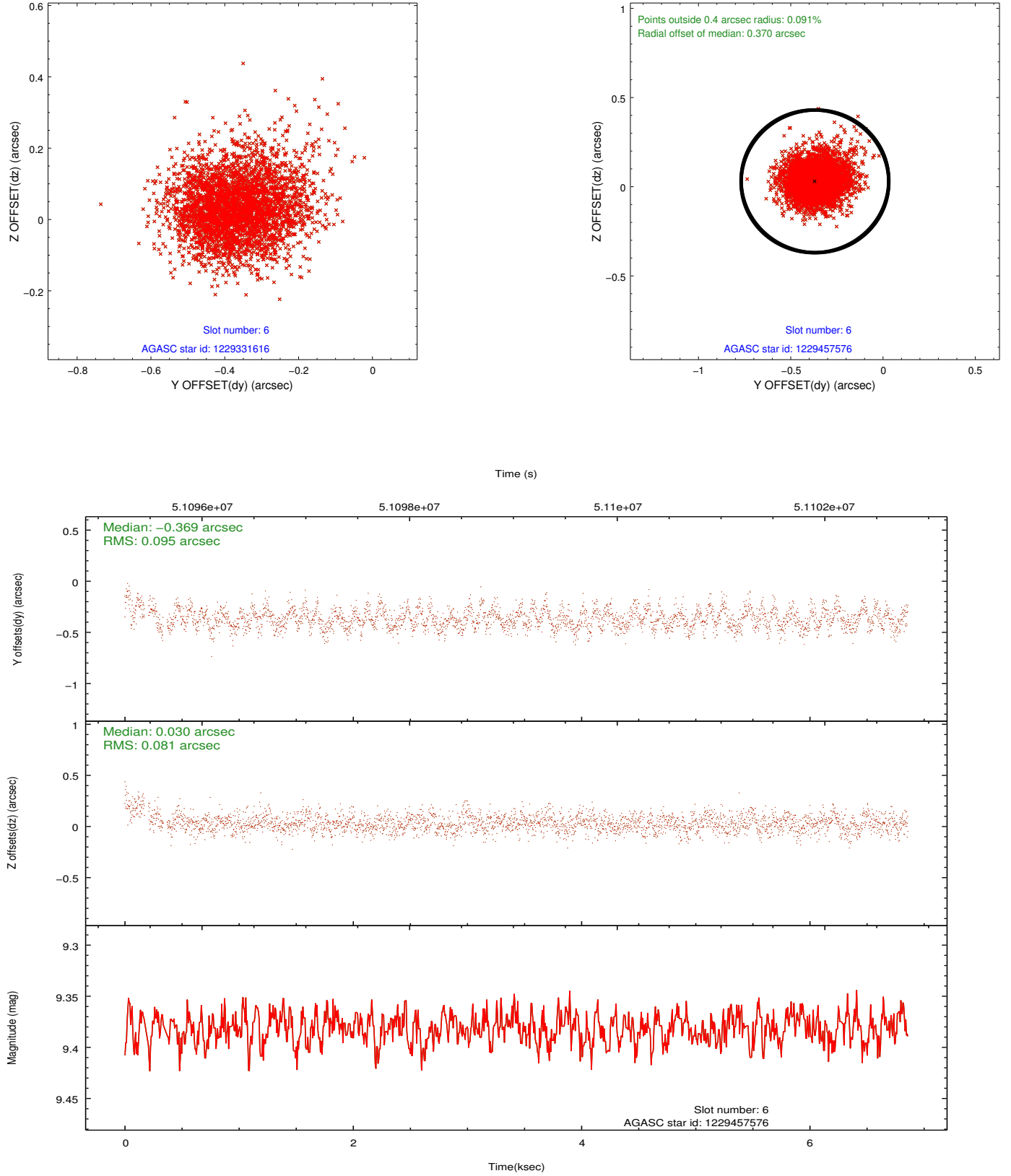
2.4.2 Slot 4



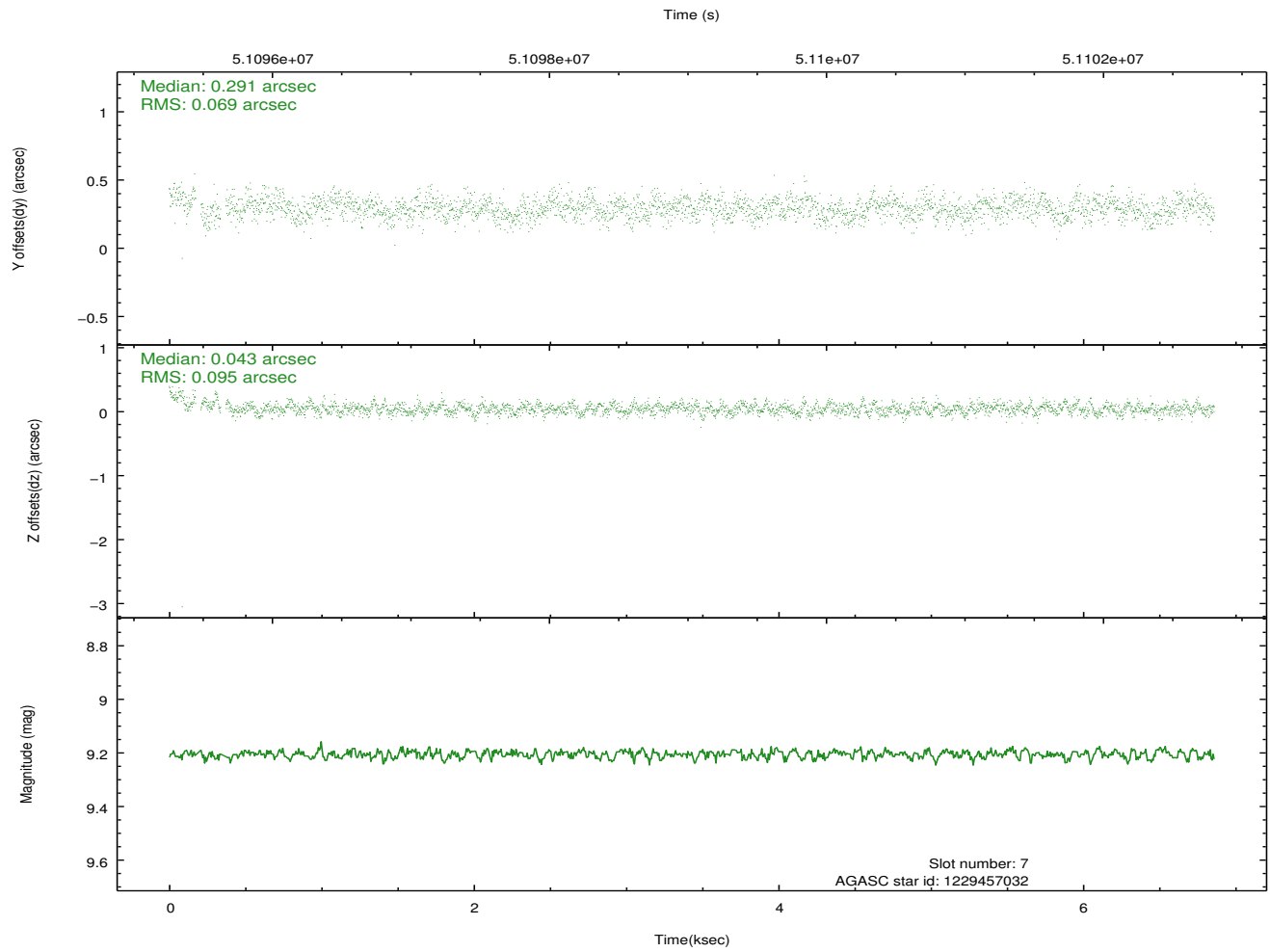
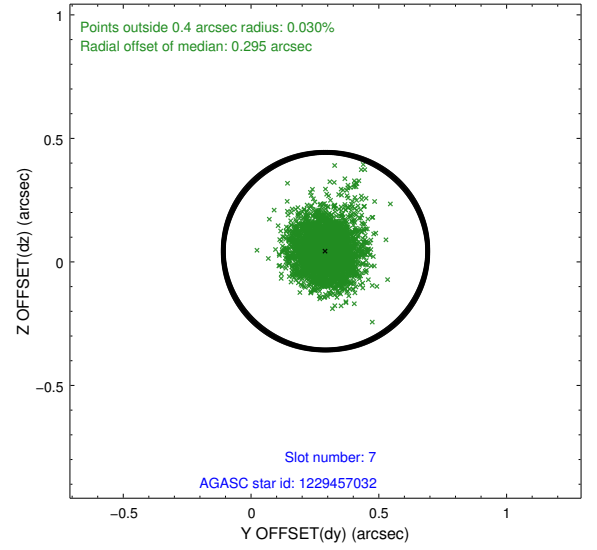
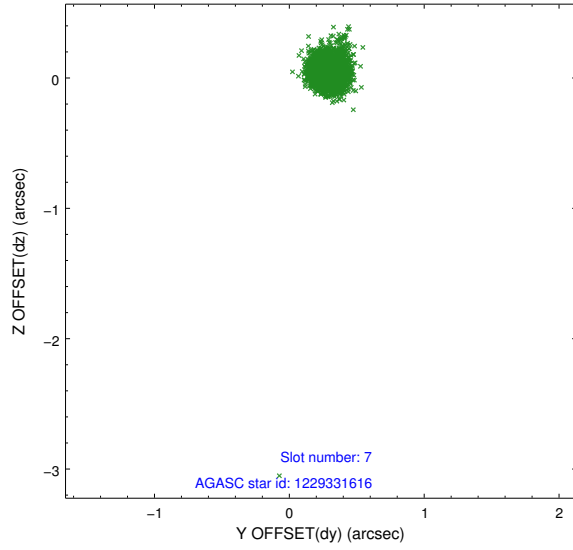
2.4.3 Slot 5



2.4.4 Slot 6

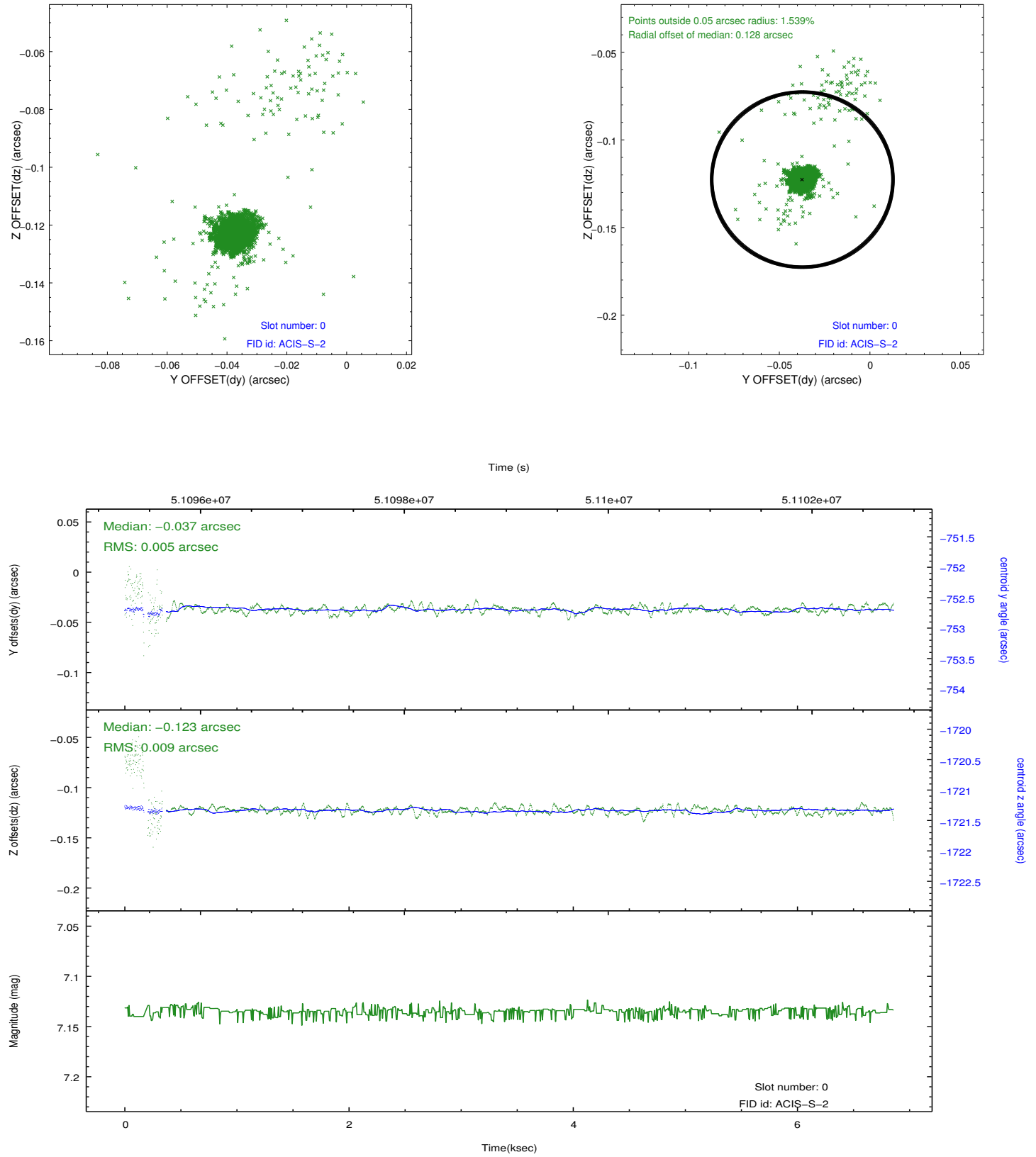


2.4.5 Slot 7

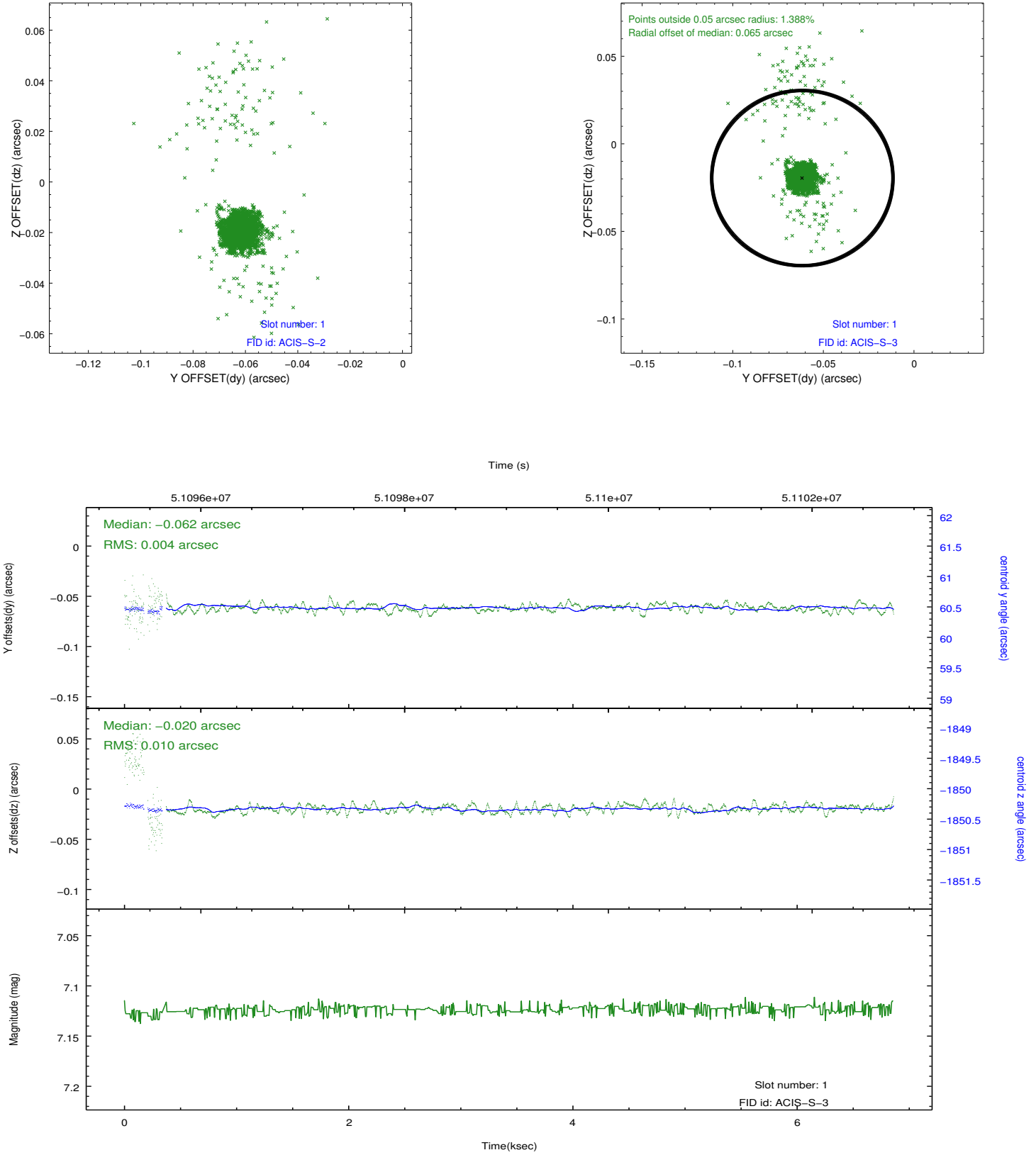


2.5 FID Slots

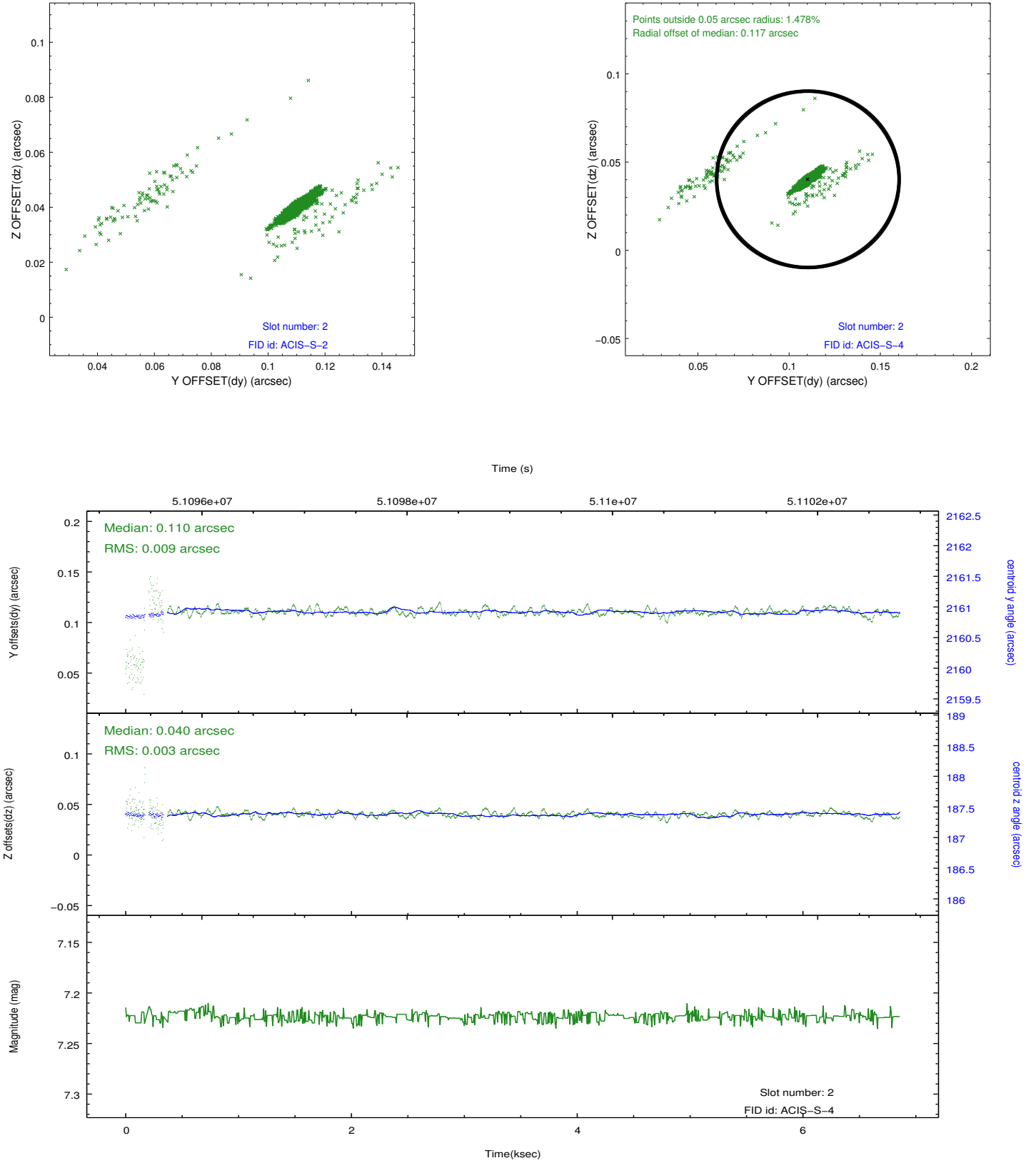
2.5.1 Slot 0



2.5.2 Slot 1



2.5.3 Slot 2



3 Point Sources

3.81 arcmin



A Summary

A.1 Status

V&V Scientist	Joy Nichols
V&V Date (YYYY-MM-DD)	2010.08.16
V&V Edition	1
V&V Disposition and Status	OK
V&V Charge Time	6.426

A.2 Comments

SIM at -0.5 mm from nominal focus (-166 motor steps). Focus and plate scale measurement.

===

The guide stars in slots 4 and 6 were excluded from the aspect solution due to poor data quality. The aspect solution is not expected to be degraded by removing these stars from the solution.

===

The focal plane temperature is approximately -100 C during this observation. This reprocessing of the data applies no CTI correction because none is available for this temperature at present.

The ACIS CTI correction has not been calibrated at this temperature, because it was early in the mission, and ACIS had not yet been lowered to the standard -119.7 C. Both front and back illuminated chips are affected. However a T_GAIN correction has been applied to the BI chips (ACIS-5 and ACIS-7) data included here.

The ACIS spectral response calibration is less accurate at these warmer temperatures than it is at -119.7 C. Users whose science objectives depend on the most accurate spectral response (ie: fitting line-rich spectra) may notice an effect. Users whose science objectives do not depend on the most accurate spectral response should not notice an effect.