

V&V Reference Report

L2 ASCDS Version : 7.6.9

Observation 61719 - L2 Version 001
Chandra X-Ray Center

L2 Processing Date : Nov 7 2006

Contents

| | | |
|----------|-------------------------------|----------|
| 1 | Front | 2 |
| 2 | OBI | 3 |
| 2.1 | OBI | 3 |
| 2.1.1 | Images | 3 |
| 2.1.2 | Bias | 3 |
| 2.1.3 | Parameters | 4 |
| 2.1.4 | Events | 4 |
| 2.2 | Compared Parameters | 5 |
| 2.3 | Aspect | 6 |
| 2.4 | Star Slots | 8 |
| 2.5 | FID Slots | 8 |
| A | Summary | 9 |
| A.1 | Status | 9 |
| A.2 | Comments | 9 |

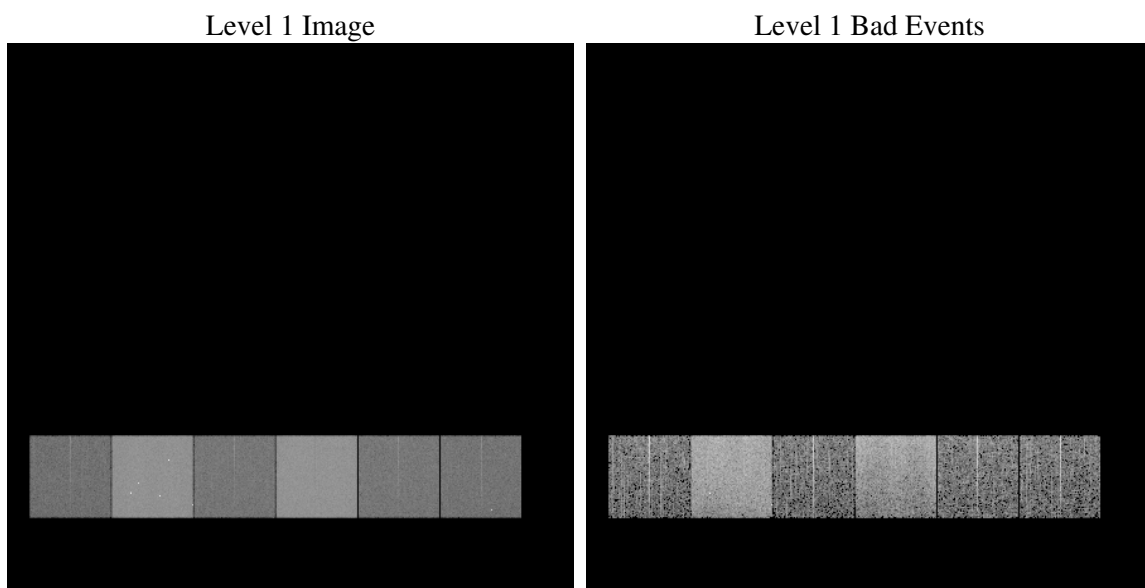
1 Front

| | |
|----------|---|
| seq_num | |
| obs_id | 61719 |
| title | ACIS-456789 diagnostics |
| observer | CHANDRA engineering request/realtime commanding |
| object | |
| dtcycle | 0 |
| cycle | P |
| ra_targ | 0.0 |
| dec_targ | 0.0 |
| ra_nom | 264.98413002998 |
| dec_nom | 50.026836354737 |
| roll_nom | 78.12705807199 |
| revision | 2 |
| ontime | 5084.8486035168 |
| livetime | 5020.4611887708 |
| ontime4 | 1989.8113382161 |
| ontime5 | 5418.7084791362 |
| ontime6 | 2216.6428184807 |
| ontime7 | 5084.8486035168 |
| ontime8 | 2255.6175179332 |
| ontime9 | 2132.2529876828 |
| l2events | 1204950 |

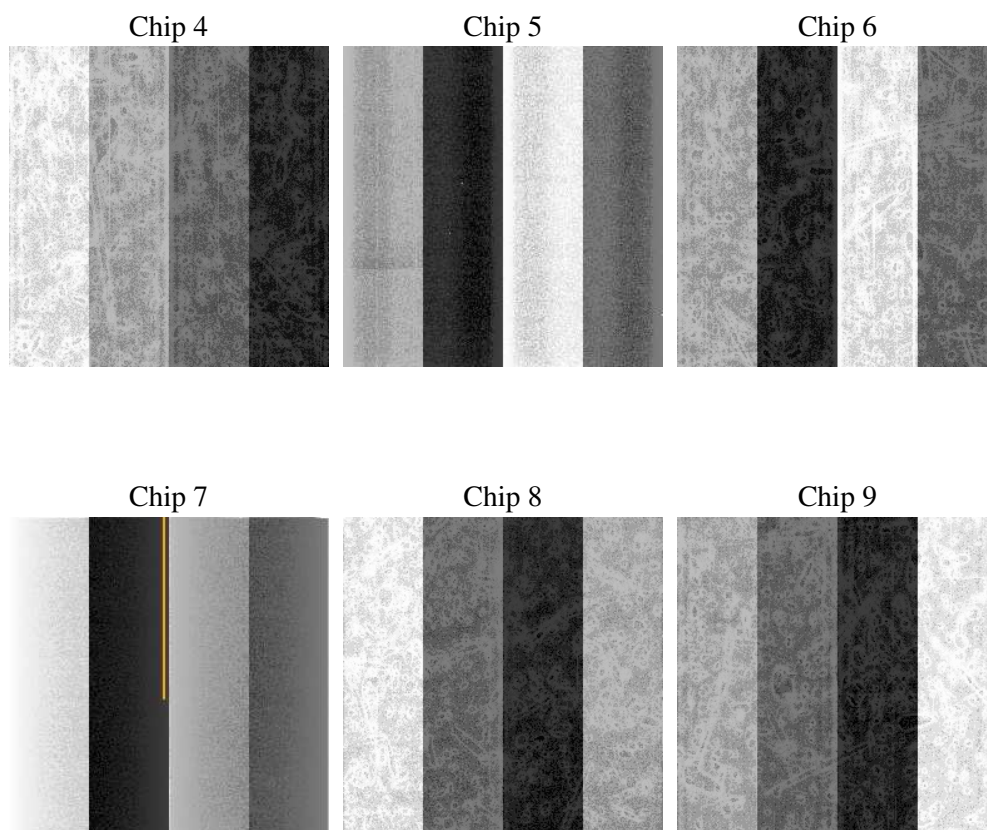
2 OBI

2.1 OBI

2.1.1 Images



2.1.2 Bias



2.1.3 Parameters

| | |
|----------|---------------------|
| obi_num | 0 |
| ascdsver | 7.6.9 |
| caldbver | 3.2.3 |
| date | 2006-11-08T02:00:59 |
| revision | 2 |

| | |
|----------------|-----------------|
| sched_exp_time | 0.0 |
| ontime | 5085.157016173 |
| ontime4 | 1989.9966308773 |
| ontime5 | 5418.9758517891 |
| ontime6 | 2216.8691511452 |
| ontime7 | 5085.157016173 |
| ontime8 | 2255.7617705911 |
| ontime9 | 2132.6024403423 |
| l1events | 1424290 |

2.1.4 Events

| | ccd 4 | ccd 5 | ccd 6 | ccd 7 | ccd 8 | ccd 9 |
|-----------------|--------|--------|--------|--------|--------|--------|
| level 1 events | 148731 | 373455 | 176041 | 382705 | 179038 | 164320 |
| rejected events | 18893 | 48979 | 17677 | 38962 | 18897 | 17757 |
| rejected % | 12% | 13% | 10% | 10% | 10% | 10% |

| | ccd 4 | ccd 5 | ccd 6 | ccd 7 | ccd 8 | ccd 9 |
|----------------|-------|--------|-------|--------|-------|-------|
| grade 0 events | 73574 | 42821 | 86385 | 63814 | 88518 | 80740 |
| | 49% | 11% | 49% | 16% | 49% | 49% |
| grade 1 events | 430 | 292 | 423 | 156 | 406 | 432 |
| | 0% | 0% | 0% | 0% | 0% | 0% |
| grade 2 events | 22999 | 154810 | 27436 | 103310 | 28293 | 25844 |
| | 15% | 41% | 15% | 26% | 15% | 15% |
| grade 3 events | 7965 | 11195 | 9685 | 26259 | 10057 | 9106 |
| | 5% | 2% | 5% | 6% | 5% | 5% |
| grade 4 events | 7972 | 10891 | 9872 | 25674 | 10011 | 8851 |
| | 5% | 2% | 5% | 6% | 5% | 5% |
| grade 5 events | 1179 | 5803 | 1372 | 5623 | 1538 | 1362 |
| | 0% | 1% | 0% | 1% | 0% | 0% |
| grade 6 events | 17328 | 104759 | 24986 | 124686 | 23262 | 22022 |
| | 11% | 28% | 14% | 32% | 12% | 13% |
| grade 7 events | 17284 | 42884 | 15882 | 33183 | 16953 | 15963 |
| | 11% | 11% | 9% | 8% | 9% | 9% |

2.2 Compared Parameters

| Parameter | Planned | Actual | Parameter | Planned | Actual |
|-----------------------------------|---------------------|----------------------|---------------------------------|-----------|---------|
| Instrument | ACIS | ACIS | Obspar format version number | 6 | 6 |
| Detector | ACIS-456789 | ACIS-456789 | Obspar file type | PREDICTED | ACTUAL |
| Grating | NONE | NONE | Obspar update status | NONE | UPDATED |
| Data mode | FAINT | FAINT | On-chip summing requested | N | N |
| Observation mode | SECONDARY | SECONDARY | Subarray requested | NONE | NONE |
| Pointing RA | 0 | 264.9841300299771 | Alternating exposures requested | N | N |
| Pointing Dec | 0 | 50.02683635473738 | Primary exposure time | 0.000000 | 3.2 |
| Pointing Roll | 0.0 | 78.12705807199002 | | | |
| SIM focus pos (mm) | -0.684267 | -0.7809083437167272 | | | |
| SIM defocus (mm) | 0 | 0.7524282956875696 | | | |
| SIM translation stage pos (mm) | -190.132523 | 250.466033080201 | | | |
| SIM translation stage offset (mm) | 0 | -0.01005468664627074 | | | |
| Observation start time | 100055810.264 | 100055809.4951 | | | |
| Observation start date | 2001-03-04T01:16:50 | 2001-03-04T01:16:49 | | | |
| Observation end time | 100067195.964 | 100067195.19554 | | | |
| Observation end date | 2001-03-04T04:26:36 | 2001-03-04T04:26:35 | | | |
| Read mode | TIMED | TIMED | | | |

2.3 Aspect

2.4 Star Slots

2.5 FID Slots

A Summary

A.1 Status

| | |
|----------------------------|------------|
| V&V Scientist | Jen Lauer |
| V&V Date (YYYY-MM-DD) | 2006.11.08 |
| V&V Edition | 1 |
| V&V Disposition and Status | OK |
| V&V Charge Time | 5.0848486 |

A.2 Comments

The ACIS focal plane temperature was above calibration limits for the entire observation.