

# V&V Reference Report

## L2 ASCDS Version : 7.6.9

Observation 61489 - L2 Version 001  
Chandra X-Ray Center

L2 Processing Date : Dec 22 2006

## Contents

<b>1</b>	<b>Front</b>	<b>2</b>
<b>2</b>	<b>OBI</b>	<b>3</b>
2.1	OBI . . . . .	3
2.1.1	Images . . . . .	3
2.1.2	Bias . . . . .	3
2.1.3	Parameters . . . . .	4
2.1.4	Events . . . . .	4
2.2	Compared Parameters . . . . .	5
2.3	Aspect . . . . .	6
2.4	Star Slots . . . . .	8
2.5	FID Slots . . . . .	8
<b>A</b>	<b>Summary</b>	<b>9</b>
A.1	Status . . . . .	9
A.2	Comments . . . . .	9

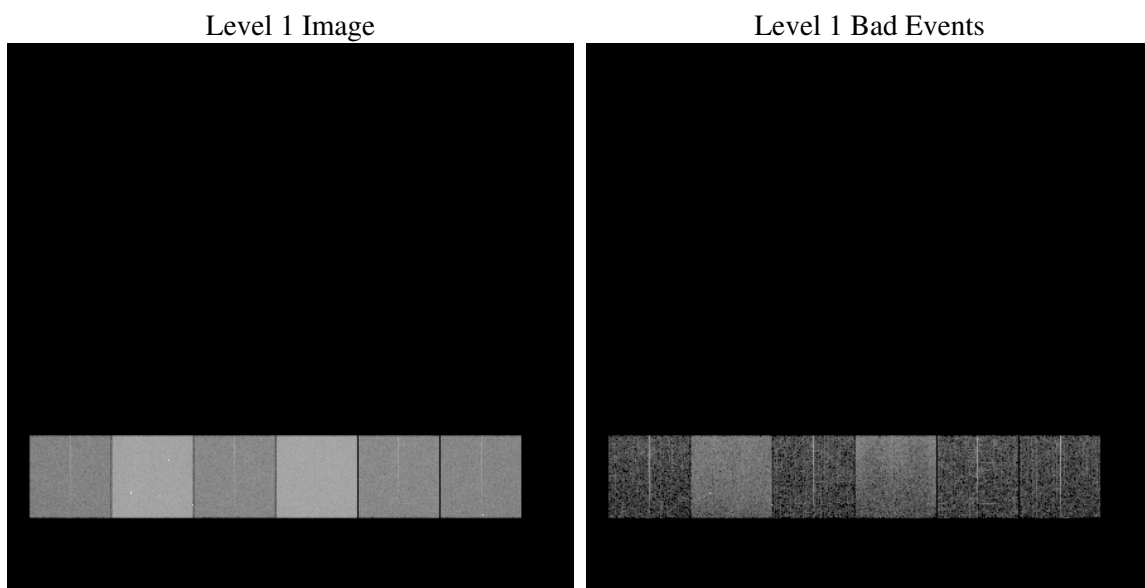
# 1 Front

seq_num	&#160
obs_id	61489
title	ACIS-456789 diagnostics
observer	CHANDRA engineering request/realtime commanding
object	&#160
dtcycle	0
cycle	P
ra_targ	0.0
dec_targ	0.0
ra_nom	55.960867470712
dec_nom	56.618911556121
roll_nom	106.01100397958
revision	2
ontime	5712.177468434
livetime	5639.8464378683
ontime4	2267.1227432936
ontime5	6120.5787918717
ontime6	2487.4722033143
ontime7	5712.177468434
ontime8	2487.5539544225
ontime9	2380.3949929327
l2events	1208265

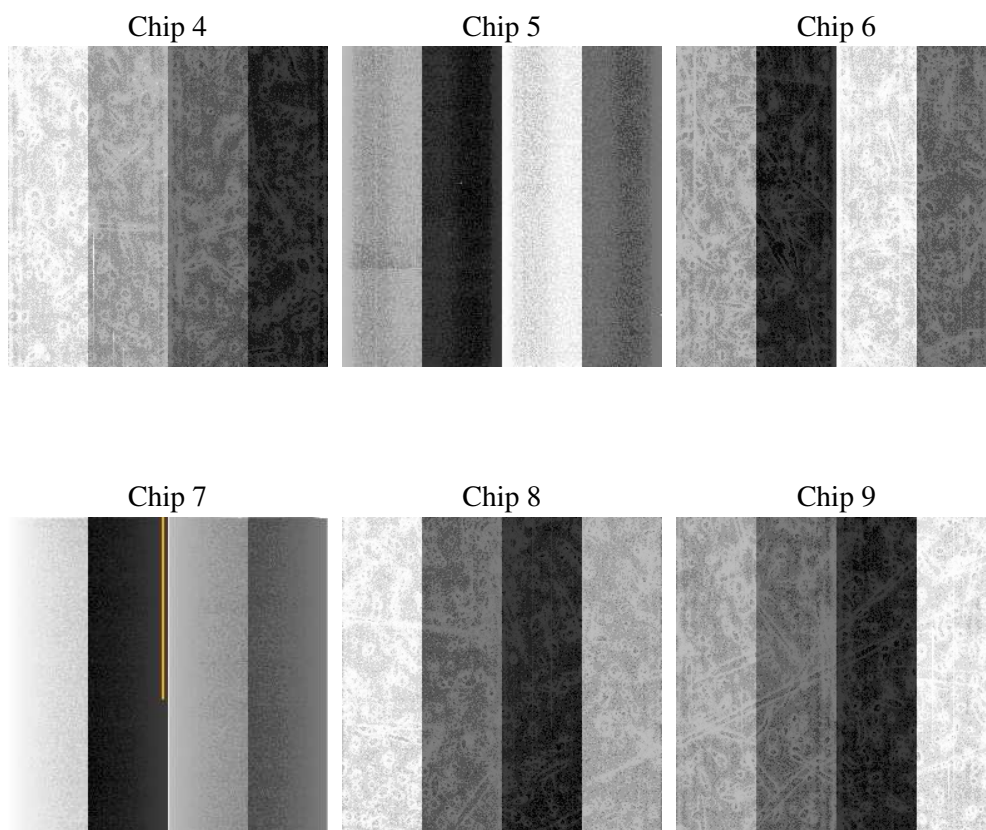
## 2 OBI

### 2.1 OBI

#### 2.1.1 Images



#### 2.1.2 Bias



### 2.1.3 Parameters

obi_num	0
ascdsver	7.6.9
caldsver	3.2.4
date	2006-12-22T04:49:12
revision	2

sched_exp_time	0.0
ontime	5713.9034567773
ontime4	2268.725611642
ontime5	6122.2637402117
ontime6	2489.116111666
ontime7	5713.9034567773
ontime8	2489.1157827675
ontime9	2382.1620212793
l1events	1425755

### 2.1.4 Events

	ccd 4	ccd 5	ccd 6	ccd 7	ccd 8	ccd 9
level 1 events	150669	373584	176748	383531	177642	163581
rejected events	17577	49577	18457	38924	19939	17892
rejected %	11%	13%	10%	10%	11%	10%

	ccd 4	ccd 5	ccd 6	ccd 7	ccd 8	ccd 9
grade 0 events	75293	42928	86438	65590	86852	80088
	49%	11%	48%	17%	48%	48%
grade 1 events	348	188	413	164	398	392
	0%	0%	0%	0%	0%	0%
grade 2 events	23541	154020	27529	102364	27903	25757
	15%	41%	15%	26%	15%	15%
grade 3 events	8146	11558	9968	26432	9814	8873
	5%	3%	5%	6%	5%	5%
grade 4 events	8232	11676	9662	26255	9987	9003
	5%	3%	5%	6%	5%	5%
grade 5 events	1158	6176	1445	5617	1495	1403
	0%	1%	0%	1%	0%	0%
grade 6 events	17880	104009	24893	124157	23147	22154
	11%	27%	14%	32%	13%	13%
grade 7 events	16071	43029	16400	32952	18046	15911
	10%	11%	9%	8%	10%	9%

## 2.2 Compared Parameters

Parameter	Planned	Actual	Parameter	Planned	Actual
Instrument	ACIS	ACIS	Obspar format version number	6	6
Detector	ACIS-456789	ACIS-456789	Obspar file type	PREDICTED	ACTUAL
Grating	NONE	NONE	Obspar update status	NONE	UPDATED
Data mode	FAINT	FAINT	On-chip summing requested	N	N
Observation mode	SECONDARY	SECONDARY	Subarray requested	NONE	NONE
Pointing RA	0	55.96086747071155	Alternating exposures requested	N	N
Pointing Dec	0	56.61891155612096	Primary exposure time	0.000000	3.2
Pointing Roll	0.0	106.0110039795807			
SIM focus pos (mm)	-0.684267	-0.7809083437167272			
SIM defocus (mm)	0	0.7524282956875696			
SIM translation stage pos (mm)	-190.132523	250.466033080201			
SIM translation stage offset (mm)	0	-0.01005468664627074			
Observation start time	115590255.769	115590255.00072			
Observation start date	2001-08-30T20:24:16	2001-08-30T20:24:15			
Observation end time	115613623.72	115613622.95165			
Observation end date	2001-08-31T02:53:44	2001-08-31T02:53:42			
Read mode	TIMED	TIMED			

## 2.3 Aspect



## **2.4 Star Slots**

## **2.5 FID Slots**



## A Summary

### A.1 Status

V&V Scientist	Jen Lauer
V&V Date (YYYY-MM-DD)	2006.12.22
V&V Edition	1
V&V Disposition and Status	OK
V&V Charge Time	5.71217746

### A.2 Comments