

# V&V Reference Report

## L2 ASCDS Version : 7.6.8.1

Observation 61339 - L2 Version 001  
Chandra X-Ray Center

L2 Processing Date : Aug 29 2006

## Contents

<b>1</b>	<b>Front</b>	<b>2</b>
<b>2</b>	<b>OBI</b>	<b>3</b>
2.1	OBI . . . . .	3
2.1.1	Images . . . . .	3
2.1.2	Bias . . . . .	3
2.1.3	Parameters . . . . .	4
2.1.4	Events . . . . .	4
2.2	Compared Parameters . . . . .	5
2.3	Aspect . . . . .	6
2.4	Star Slots . . . . .	8
2.5	FID Slots . . . . .	8
<b>A</b>	<b>Summary</b>	<b>9</b>
A.1	Status . . . . .	9
A.2	Comments . . . . .	9

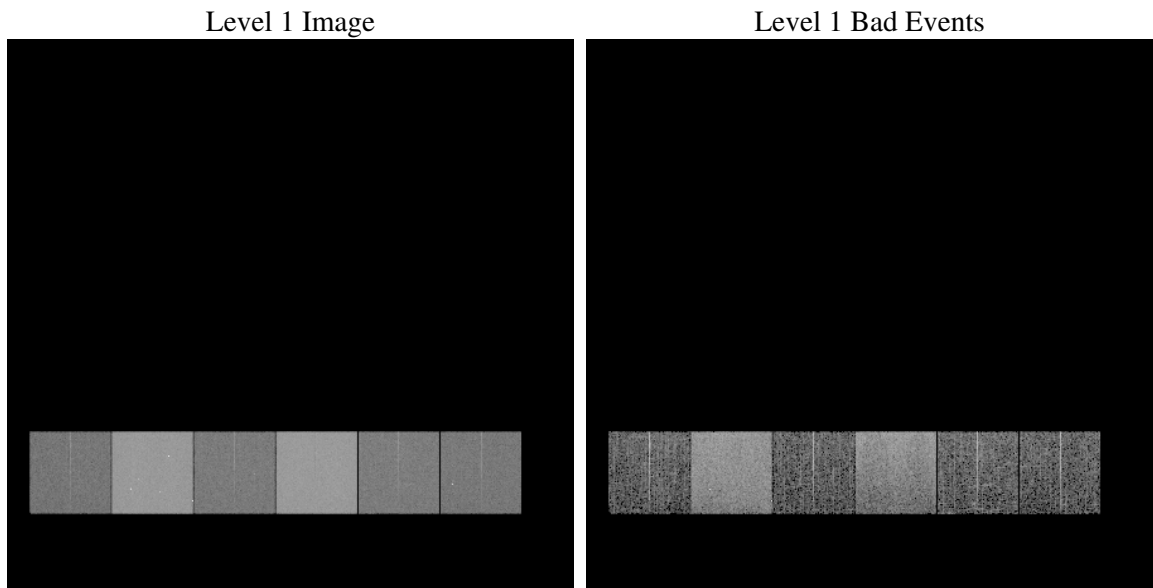
# 1 Front

seq_num	&#160
obs_id	61339
title	ACIS-456789 diagnostics
observer	CHANDRA engineering request/realtime commanding
object	&#160
dtcycle	0
cycle	P
ra_targ	0.0
dec_targ	0.0
ra_nom	224.97992443328
dec_nom	-49.97446107216
roll_nom	84.035878074786
revision	2
ontime	6904.0707936585
livetime	6816.6472921369
ontime4	2569.2014341205
ontime5	7383.7324729264
ontime6	2815.4791443646
ontime7	6904.0707936585
ontime8	2932.2380259037
ontime9	2737.5714134127
l2events	1285756

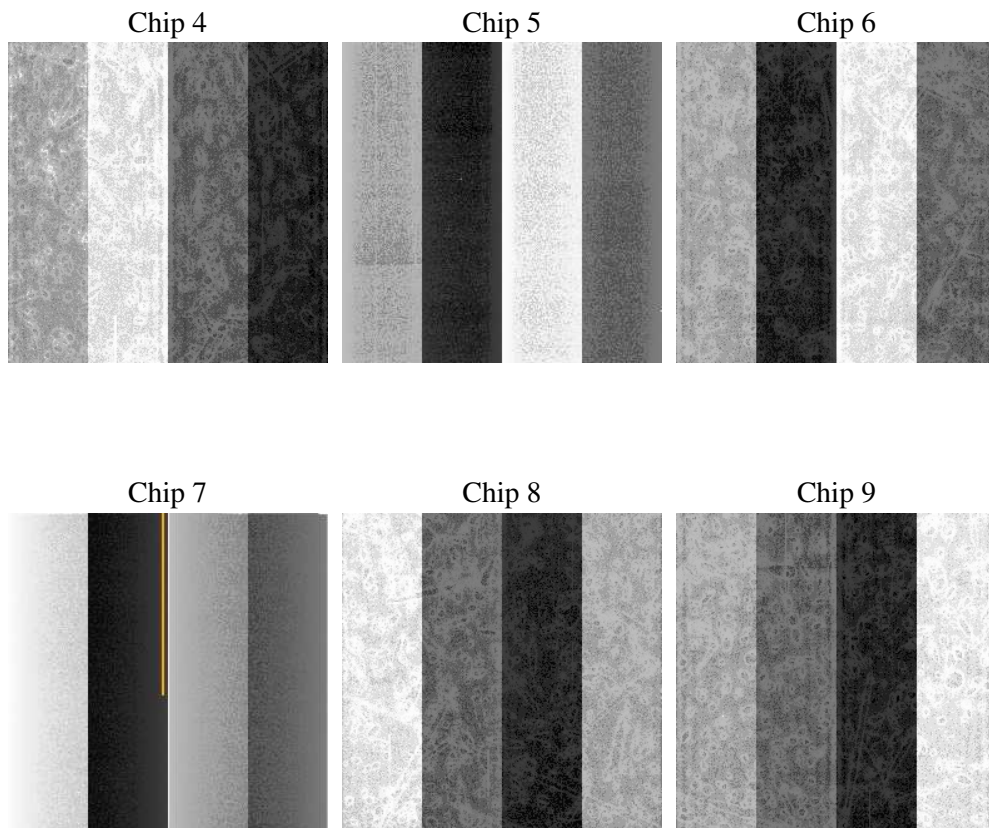
## 2 OBI

### 2.1 OBI

#### 2.1.1 Images



#### 2.1.2 Bias



### 2.1.3 Parameters

obi_num	0
ascdsver	7.6.8.1
caldsver	3.2.3
date	2006-08-29T23:49:42
revision	2

sched_exp_time	0.0
ontime	6906.5830798596
ontime4	2570.1419022977
ontime5	7386.2447591275
ontime6	2816.4606525451
ontime7	6906.5830798596
ontime8	2933.1374540776
ontime9	2738.6760415882
l1events	1541921

### 2.1.4 Events

	ccd 4	ccd 5	ccd 6	ccd 7	ccd 8	ccd 9
level 1 events	158065	415981	181400	425165	190931	170379
rejected events	21492	62091	20223	50053	23292	20197
rejected %	13%	14%	11%	11%	12%	11%

	ccd 4	ccd 5	ccd 6	ccd 7	ccd 8	ccd 9
grade 0 events	77250	43027	88187	68106	92108	82259
	48%	10%	48%	16%	48%	48%
grade 1 events	422	306	428	158	423	434
	0%	0%	0%	0%	0%	0%
grade 2 events	24000	169697	28125	113527	29808	26618
	15%	40%	15%	26%	15%	15%
grade 3 events	8322	11936	9918	27852	10604	9109
	5%	2%	5%	6%	5%	5%
grade 4 events	8341	11864	9922	27362	10590	9512
	5%	2%	5%	6%	5%	5%
grade 5 events	1340	7247	1561	6761	1723	1624
	0%	1%	0%	1%	0%	0%
grade 6 events	18660	117366	25025	138265	24529	22684
	11%	28%	13%	32%	12%	13%
grade 7 events	19730	54538	18234	43134	21146	18139
	12%	13%	10%	10%	11%	10%

## 2.2 Compared Parameters

Parameter	Planned	Actual	Parameter	Planned	Actual
Instrument	ACIS	ACIS	Obspar format version number	6	6
Detector	ACIS-456789	ACIS-456789	Obspar file type	PREDICTED	ACTUAL
Grating	NONE	NONE	Obspar update status	NONE	UPDATED
Data mode	FAINT	FAINT	On-chip summing requested	N	N
Observation mode	SECONDARY	SECONDARY	Subarray requested	NONE	NONE
Pointing RA	0	224.9799244332766	Alternating exposures requested	N	N
Pointing Dec	0	-49.97446107216012	Primary exposure time	3.2	3.2
Pointing Roll	0.0	84.03587807478587			
SIM focus pos (mm)	-0.684267	-1.428180813131781			
SIM defocus (mm)	0	0.1051558262725154			
SIM translation stage pos (mm)	-190.132523	250.466033080201			
SIM translation stage offset (mm)	0	-0.01005468664627074			
Observation start time	128195468.47184	128195467.70338			
Observation start date	2002-01-23T17:51:08	2002-01-23T17:51:07			
Observation end time	128216778.222701	128216777.45424			
Observation end date	2002-01-23T23:46:18	2002-01-23T23:46:17			
Read mode	TIMED	TIMED			

## 2.3 Aspect



## **2.4 Star Slots**

## **2.5 FID Slots**

## A Summary

### A.1 Status

V&V Scientist	Jen Lauer
V&V Date (YYYY-MM-DD)	2006.08.30
V&V Edition	1
V&V Disposition and Status	OK
V&V Charge Time	6.90407079

### A.2 Comments