

V&V Reference Report

L2 ASCDS Version : 8.4.5

Observation 60849 - L2 Version 3
Chandra X-Ray Center

L2 Processing Date : Oct 22 2012

Contents

1	Front	2
2	OBI	3
2.1	OBI	3
2.1.1	Images	3
2.1.2	Bias	3
2.1.3	Parameters	4
2.1.4	Events	4
2.2	Compared Parameters	5
2.3	Star Slots	6
2.4	FID Slots	6
A	Summary	7
A.1	Status	7
A.2	Comments	7

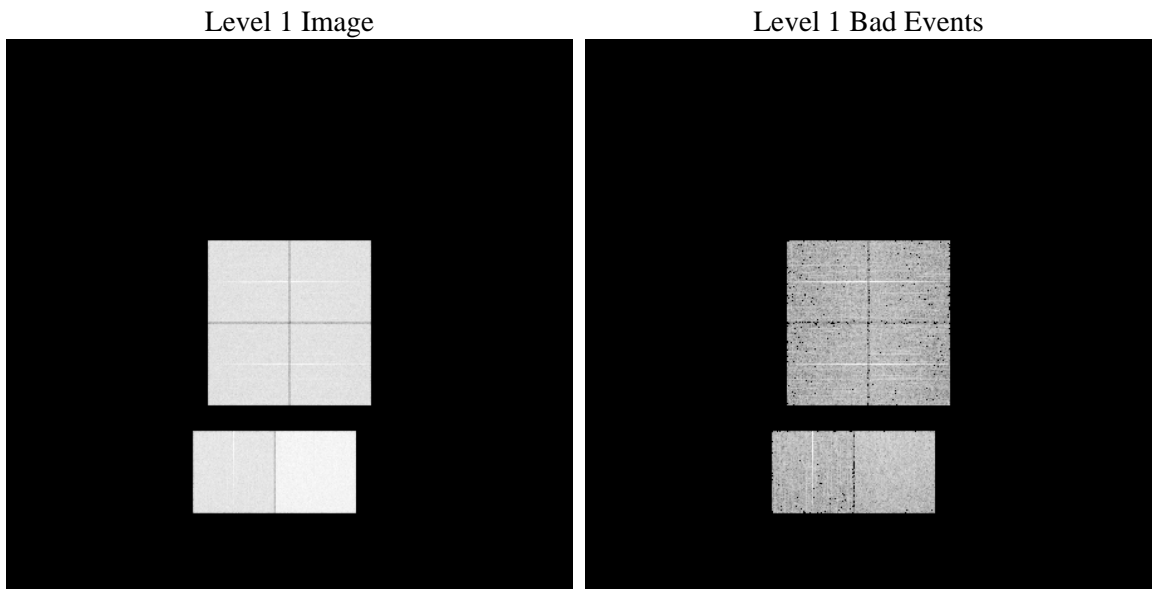
1 Front

seq_num	 	Sequence number
obs_id	60849	Observation id
title	ACIS-012367 diagnostics	Proposal title
observer	CHANDRA engineering request/realtime commanding	Principal investig
object	 	Source name
dtcycle	0	
cycle	P	events from which exps? Prim/Second/Both
ra_targ	0.0	Observer's specified target RA [deg]
dec_targ	0.0	Observer's specified target Dec [deg]
ra_nom	83.519461266075	Nominal RA [deg]
dec_nom	12.478615022523	Nominal Dec [deg]
roll_nom	278.70802271149	Nominal Roll [deg]
revision	3	Processing version of data
ontime	7794.6093171835	Sum of GTIs [s]
livetime	7695.9092806591	Livetime [s]
ontime0	4239.2634723783	Sum of GTIs [s]
ontime1	4252.2265769541	Sum of GTIs [s]
ontime2	4050.2453410029	Sum of GTIs [s]
ontime3	4103.1416856945	Sum of GTIs [s]
ontime6	4536.352668643	Sum of GTIs [s]
ontime7	7794.6093171835	Sum of GTIs [s]
l2events	1186120	Number of level 2 events

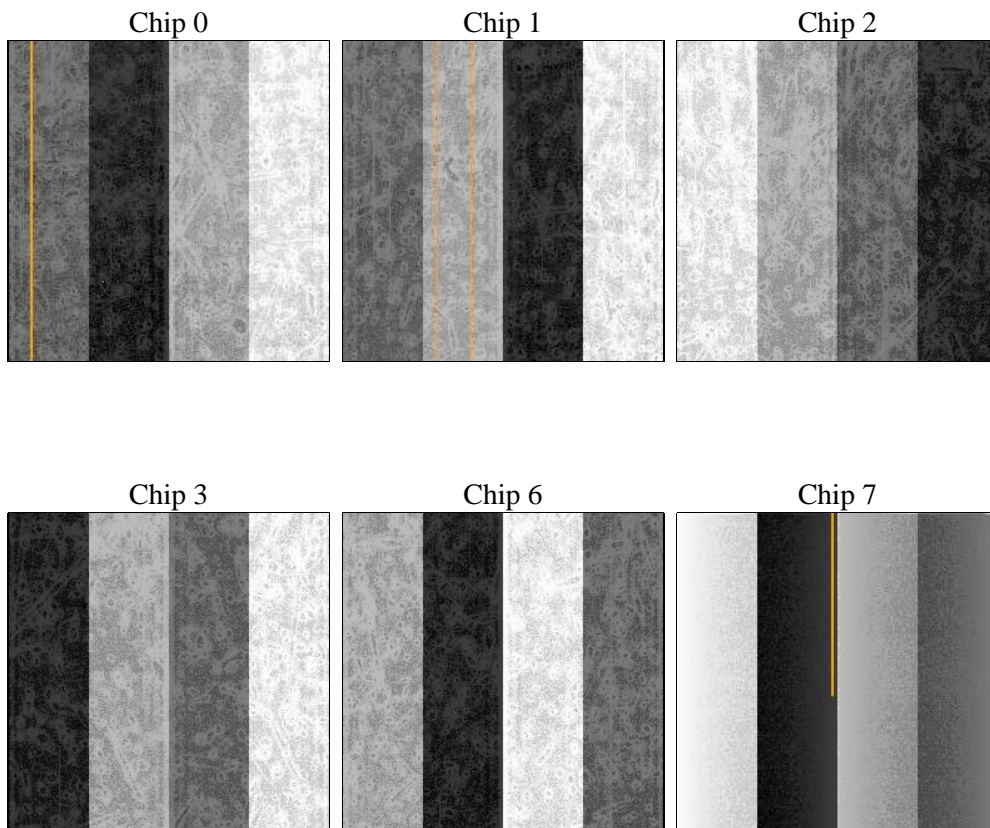
2 OBI

2.1 OBI

2.1.1 Images



2.1.2 Bias



2.1.3 Parameters

obi_num	0	Obi number	sched_exp_time	0.0	[s] Scheduled observation exposure time
ascdsver	8.4.5	Processing system revision	ontime	7794.6093171835	Sum of GTIs [s]
caldsver	4.5.2	 	ontime0	4239.2634723783	Sum of GTIs [s]
date	2012-10-22T12:33:47	Date and time of file creation	ontime1	4252.2265769541	Sum of GTIs [s]
revision	3	Processing version of data	ontime2	4050.2453410029	Sum of GTIs [s]
			ontime3	4103.1416856945	Sum of GTIs [s]
			ontime6	4536.352668643	Sum of GTIs [s]
			ontime7	7794.6093171835	Sum of GTIs [s]
			l1events	1426741	Number of level 1 events

2.1.4 Events

	ccd 0	ccd 1	ccd 2	ccd 3	ccd 6	ccd 7		ccd 0	ccd 1	ccd 2	ccd 3	ccd 6	ccd 7
level 1 events	204037	205319	198872	203712	230111	384690	grade 0 events	97904	97586	95694	97691	108962	86181
rejected events	27677	28154	28020	30467	30901	41670		47%	47%	48%	47%	47%	22%
rejected %	13%	13%	14%	14%	13%	10%	grade 1 events	543	477	546	560	507	218
								0%	0%	0%	0%	0%	0%
							grade 2 events	30493	31192	28949	29685	34275	76029
								14%	15%	14%	14%	14%	19%
							grade 3 events	11235	11259	11308	11292	12329	34829
								5%	5%	5%	5%	5%	9%
							grade 4 events	11208	11112	11185	11025	12421	34530
								5%	5%	5%	5%	5%	8%
							grade 5 events	1940	1898	1805	2064	2313	8099
								0%	0%	0%	1%	1%	2%
							grade 6 events	25520	26016	23716	23552	31223	111451
								12%	12%	11%	11%	13%	28%
							grade 7 events	25194	25779	25669	27843	28081	33353
								12%	12%	12%	13%	12%	8%

2.2 Compared Parameters

Parameter	Planned	Actual
Instrument	ACIS	ACIS
Detector	ACIS-012367	ACIS-012367
Grating	NONE	NONE
Data mode	FAINT	FAINT
Observation mode	SECONDARY	SECONDARY
[deg] Pointing RA	0	83.51946126607515
[deg] Pointing Dec	0	12.47861502252273
[deg] Pointing Roll	0.0	278.7080227114906
[mm] SIM focus pos	-0.782348	-0.6828225247311905
[mm] SIM defocus	0	0.8505141146731063
[mm] SIM translation stage pos	-233.592463	250.466033080201
[mm] SIM translation stage offset	0	-0.01005468664627074
[s] Observation start time (MET)	161513617.848992	161513616.82428
Observation start date	2003-02-13T08:53:38	2003-02-13T08:53:36
[s] Observation end time (MET)	161542440.850203	161542439.82549
Observation end date	2003-02-13T16:54:01	2003-02-13T16:53:59
Read mode	TIMED	TIMED

Parameter	Planned	Actual
Obspar format version number	7	7
Obspar file type	PREDICTED	ACTUAL
Obspar update status	NONE	UPDATED
On-chip summing requested	N	N
Subarray requested	NONE	NONE
Alternating exposures requested	N	N
[s] Primary exposure time	0.000000	3.2

2.3 Star Slots

2.4 FID Slots

A Summary

A.1 Status

V&V Scientist	Beth Sundheim
V&V Date (YYYY-MM-DD)	2012.11.28
V&V Edition	1
V&V Disposition and Status	OK
V&V Charge Time	7.7946093171835

A.2 Comments