

V&V Reference Report

L2 ASCDS Version : 7.6.8

Observation 60849 - L2 Version 001
Chandra X-Ray Center

L2 Processing Date : Jul 28 2006

Contents

1	Front	2
2	OBI	3
2.1	OBI	3
2.1.1	Images	3
2.1.2	Bias	3
2.1.3	Parameters	4
2.1.4	Events	4
2.2	Compared Parameters	5
2.3	Aspect	6
2.4	Star Slots	8
2.5	FID Slots	8
A	Summary	9
A.1	Status	9
A.2	Comments	9

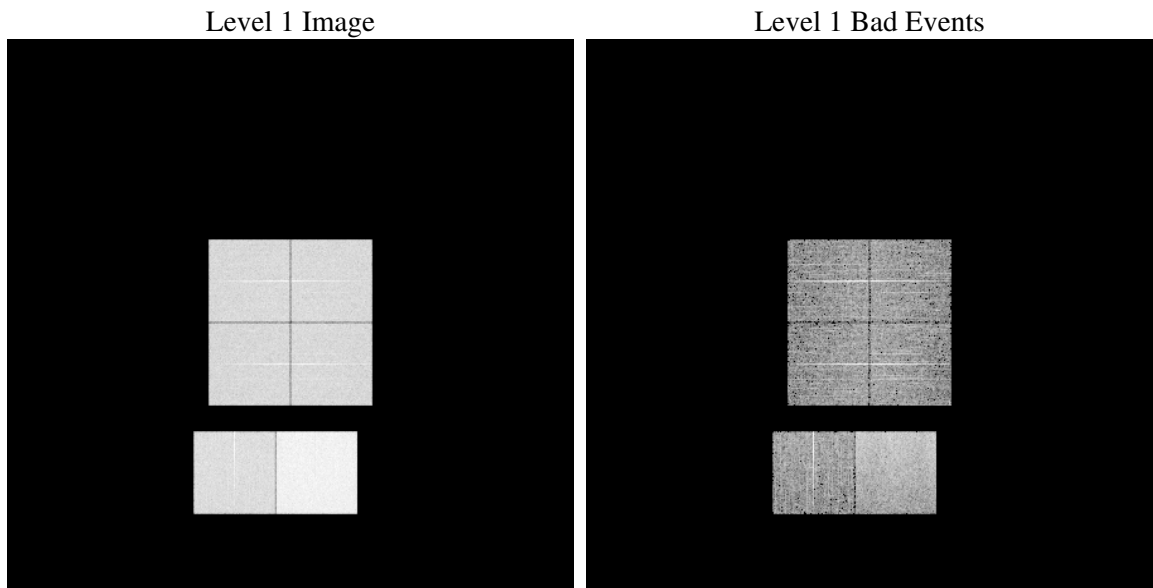
1 Front

seq_num	
obs_id	60849
title	ACIS-012367 diagnostics
observer	CHANDRA engineering request/realtime commanding
object	
dtcycle	0
cycle	P
ra_targ	0.0
dec_targ	0.0
ra_nom	83.519461266075
dec_nom	12.478615022523
roll_nom	278.70802271149
revision	2
ontime	7794.4759533405
livetime	7695.7776055494
ontime0	4239.1711485386
ontime1	4252.1752931178
ontime2	4051.2751897275
ontime3	4102.9672818482
ontime6	4537.4338011742
ontime7	7794.4759533405
l2events	1174121

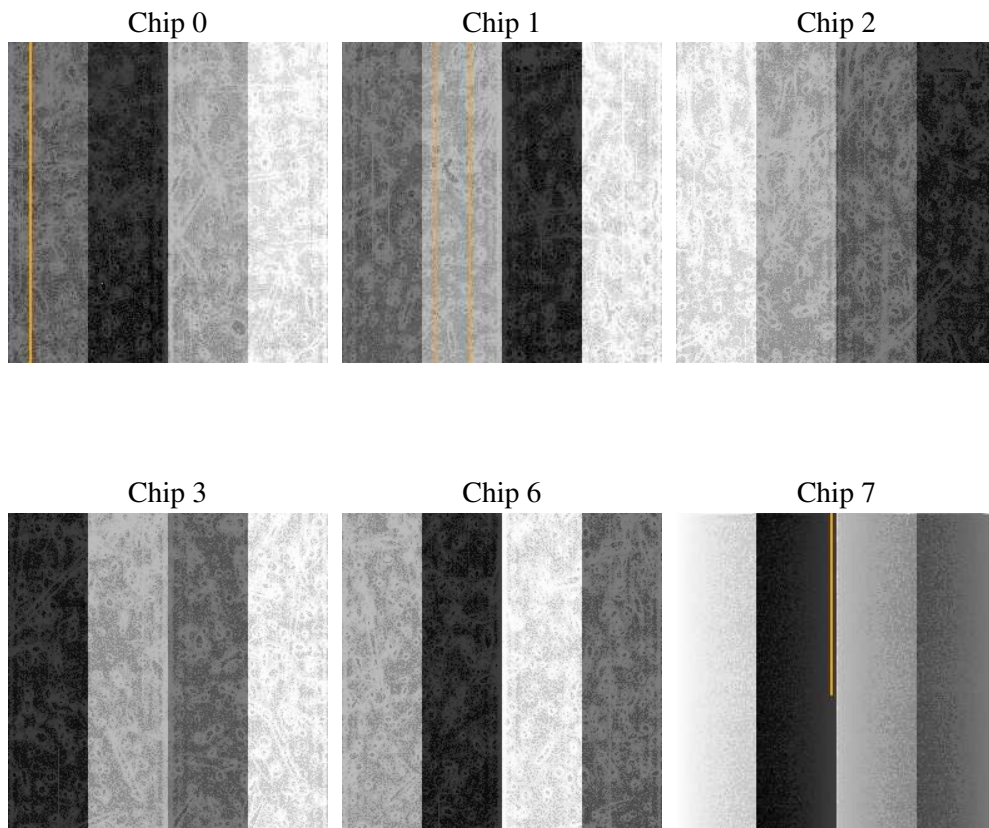
2 OBI

2.1 OBI

2.1.1 Images



2.1.2 Bias



2.1.3 Parameters

obi_num	0
ascdsver	7.6.8
caldbver	3.2.2
date	2006-07-28T03:43:48
revision	2

sched_exp_time	0.0
ontime	7794.6093171835
ontime0	4239.2634723783
ontime1	4252.2265769541
ontime2	4051.2854335606
ontime3	4103.1416856945
ontime6	4537.4338011742
ontime7	7794.6093171835
l1events	1426741

2.1.4 Events

	ccd 0	ccd 1	ccd 2	ccd 3	ccd 6	ccd 7
level 1 events	204037	205319	198872	203712	230111	384690
rejected events	27681	28156	28021	30465	30901	53825
rejected %	13%	13%	14%	14%	13%	13%

	ccd 0	ccd 1	ccd 2	ccd 3	ccd 6	ccd 7
grade 0 events	97886	97565	95675	97668	108939	60650
	47%	47%	48%	47%	47%	15%
grade 1 events	542	475	545	560	504	127
	0%	0%	0%	0%	0%	0%
grade 2 events	30511	31214	28968	29708	34298	99656
	14%	15%	14%	14%	14%	25%
grade 3 events	11228	11255	11302	11286	12321	24874
	5%	5%	5%	5%	5%	6%
grade 4 events	11201	11107	11182	11018	12414	24456
	5%	5%	5%	5%	5%	6%
grade 5 events	1942	1896	1806	2061	2312	7094
	0%	0%	0%	1%	1%	1%
grade 6 events	25530	26022	23724	23567	31238	121229
	12%	12%	11%	11%	13%	31%
grade 7 events	25197	25785	25670	27844	28085	46604
	12%	12%	12%	13%	12%	12%

2.2 Compared Parameters

Parameter	Planned	Actual	Parameter	Planned	Actual
Instrument	ACIS	ACIS	Obspar format version number	6	6
Detector	ACIS-012367	ACIS-012367	Obspar file type	PREDICTED	ACTUAL
Grating	NONE	NONE	Obspar update status	NONE	UPDATED
Data mode	FAINT	FAINT	On-chip summing requested	N	N
Observation mode	SECONDARY	SECONDARY	Subarray requested	NONE	NONE
Pointing RA	0	83.51946126607515	Alternating exposures requested	N	N
Pointing Dec	0	12.47861502252271	Primary exposure time	0.000000	3.2
Pointing Roll	0.0	278.7080227114906			
SIM focus pos (mm)	-0.782348	-0.6828225247311905			
SIM defocus (mm)	0	0.8505141146731063			
SIM translation stage pos (mm)	-233.592463	250.466033080201			
SIM translation stage offset (mm)	0	-0.01005468664627074			
Observation start time	161513617.848992	161513616.82428			
Observation start date	2003-02-13T08:53:38	2003-02-13T08:53:36			
Observation end time	161542440.850203	161542439.82549			
Observation end date	2003-02-13T16:54:01	2003-02-13T16:53:59			
Read mode	TIMED	TIMED			

2.3 Aspect

2.4 Star Slots

2.5 FID Slots

A Summary

A.1 Status

V&V Scientist	Jen Lauer
V&V Date (YYYY-MM-DD)	2006.07.28
V&V Edition	1
V&V Disposition and Status	OK
V&V Charge Time	7.79447595

A.2 Comments