

V&V Reference Report

L2 ASCDS Version : 7.6.8

Observation 60729 - L2 Version 001
Chandra X-Ray Center

L2 Processing Date : Aug 3 2006

Contents

1	Front	2
2	OBI	3
2.1	OBI	3
2.1.1	Images	3
2.1.2	Bias	3
2.1.3	Parameters	4
2.1.4	Events	4
2.2	Compared Parameters	5
2.3	Aspect	6
2.4	Star Slots	8
2.5	FID Slots	8
A	Summary	9
A.1	Status	9
A.2	Comments	9

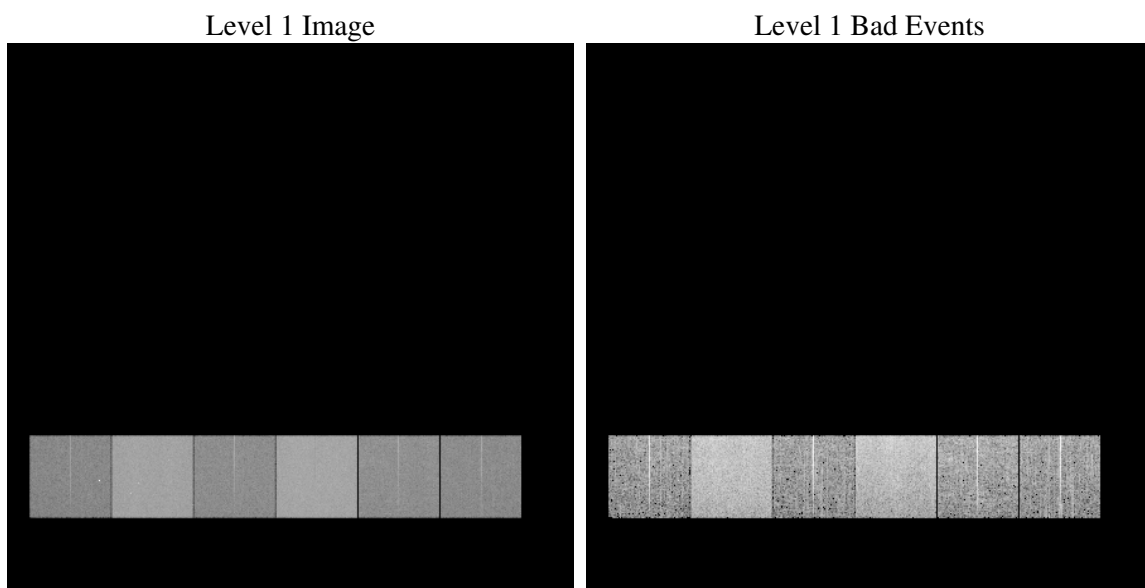
1 Front

seq_num	
obs_id	60729
title	ACIS-456789 diagnostics
observer	CHANDRA engineering request/realtime commanding
object	
dtcycle	0
cycle	P
ra_targ	0.0
dec_targ	0.0
ra_nom	155.50968659511
dec_nom	-31.727366617867
roll_nom	253.89881573994
revision	2
ontime	8387.1999687552
livetime	8280.9961925854
ontime4	3843.3515227139
ontime5	8387.1999687552
ontime6	4232.2727856934
ontime7	8387.1999687552
ontime8	4341.7713789642
ontime9	4073.462901324
l2events	1222924

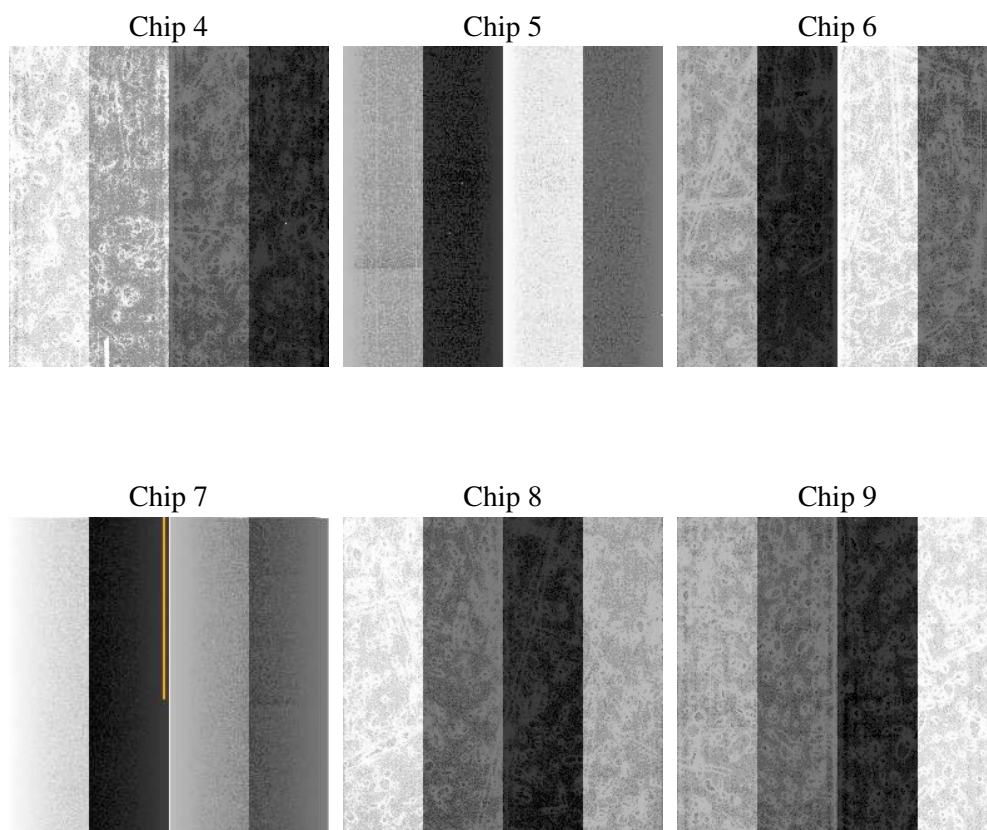
2 OBI

2.1 OBI

2.1.1 Images



2.1.2 Bias



2.1.3 Parameters

obi_num	0
ascdsver	7.6.8
caldsver	3.2.2
date	2006-08-03T09:24:09
revision	2

sched_exp_time	0.0
ontime	8462.2542286813
ontime4	3876.2730996311
ontime5	8462.2542286813
ontime6	4268.4353228509
ontime7	8462.2542286813
ontime8	4385.1109888554
ontime9	4109.6254185438
l1events	1538983

2.1.4 Events

	ccd 4	ccd 5	ccd 6	ccd 7	ccd 8	ccd 9
level 1 events	174853	361717	203028	392874	215094	191417
rejected events	28995	66839	30811	62076	35559	31580
rejected %	16%	18%	15%	15%	16%	16%

	ccd 4	ccd 5	ccd 6	ccd 7	ccd 8	ccd 9
grade 0 events	86248	33594	94564	57864	99470	89209
	49%	9%	46%	14%	46%	46%
grade 1 events	579	109	448	132	502	468
	0%	0%	0%	0%	0%	0%
grade 2 events	22913	142711	30231	102012	31691	27585
	13%	39%	14%	25%	14%	14%
grade 3 events	9623	9583	10824	24442	11806	10213
	5%	2%	5%	6%	5%	5%
grade 4 events	9756	9444	10435	23571	11768	10385
	5%	2%	5%	5%	5%	5%
grade 5 events	1795	6736	2005	7427	2407	2096
	1%	1%	0%	1%	1%	1%
grade 6 events	18565	102220	27626	125922	26588	23851
	10%	28%	13%	32%	12%	12%
grade 7 events	25374	57320	26895	51504	30862	27610
	14%	15%	13%	13%	14%	14%

2.2 Compared Parameters

Parameter	Planned	Actual	Parameter	Planned	Actual
Instrument	ACIS	ACIS	Obspar format version number	6	6
Detector	ACIS-456789	ACIS-456789	Obspar file type	PREDICTED	ACTUAL
Grating	NONE	NONE	Obspar update status	NONE	UPDATED
Data mode	FAINT	FAINT	On-chip summing requested	N	N
Observation mode	SECONDARY	SECONDARY	Subarray requested	NONE	NONE
Pointing RA	0	155.509686595114	Alternating exposures requested	N	N
Pointing Dec	0	-31.72736661786671	Primary exposure time	0.000000	3.2
Pointing Roll	0.0	253.8988157399444			
SIM focus pos (mm)	-0.684267	-0.7809083437167272			
SIM defocus (mm)	0	0.7524282956875696			
SIM translation stage pos (mm)	-190.132523	250.466033080201			
SIM translation stage offset (mm)	0	-0.01005468664627074			
Observation start time	170233793.416935	170233792.39221			
Observation start date	2003-05-25T07:09:53	2003-05-25T07:09:52			
Observation end time	170257159.317927	170257158.2932			
Observation end date	2003-05-25T13:39:19	2003-05-25T13:39:18			
Read mode	TIMED	TIMED			

2.3 Aspect

2.4 Star Slots

2.5 FID Slots

A Summary

A.1 Status

V&V Scientist	Beth Sundheim
V&V Date (YYYY-MM-DD)	2006.08.03
V&V Edition	1
V&V Disposition and Status	OK
V&V Charge Time	8.38719996

A.2 Comments