

# V&V Reference Report

## L2 ASCDS Version : 7.6.7.2

Observation 60239 - L2 Version 001  
Chandra X-Ray Center

L2 Processing Date : May 18 2006

## Contents

<b>1</b>	<b>Front</b>	<b>2</b>
<b>2</b>	<b>OBI</b>	<b>3</b>
2.1	OBI . . . . .	3
2.1.1	Images . . . . .	3
2.1.2	Bias . . . . .	3
2.1.3	Parameters . . . . .	4
2.1.4	Events . . . . .	4
2.2	Compared Parameters . . . . .	5
2.3	Aspect . . . . .	6
2.4	Star Slots . . . . .	8
2.5	FID Slots . . . . .	8
<b>A</b>	<b>Summary</b>	<b>9</b>
A.1	Status . . . . .	9
A.2	Comments . . . . .	9

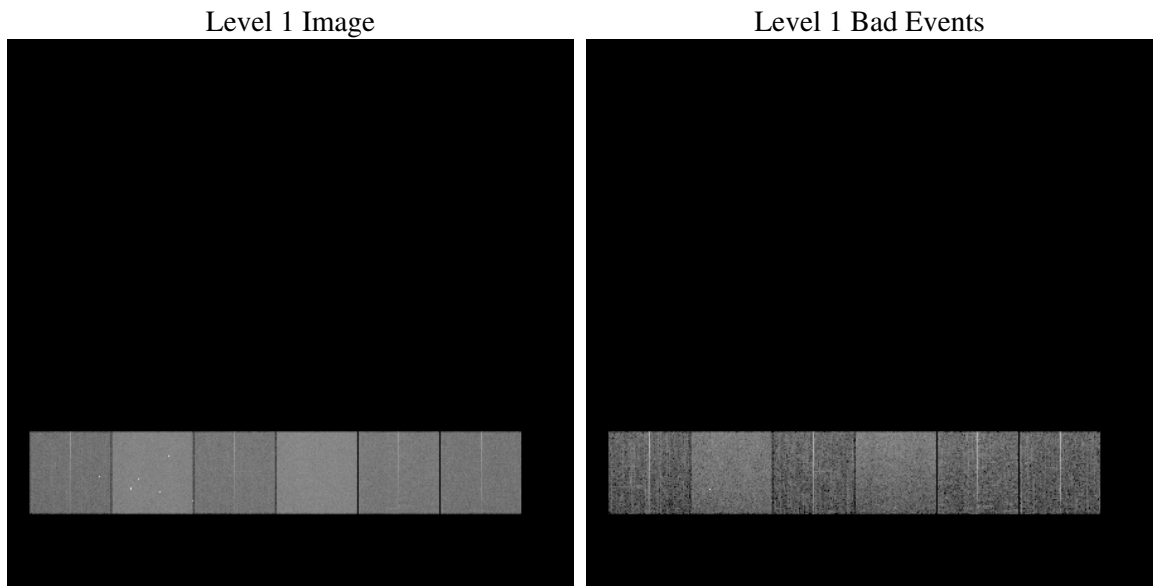
# 1 Front

seq_num	&#160
obs_id	60239
title	ACIS-456789 diagnostics
observer	CHANDRA engineering request/realtime commanding
object	&#160
dtcycle	0
cycle	P
ra_targ	0.0
dec_targ	0.0
ra_nom	263.98315315833
dec_nom	-21.97607911682
roll_nom	90.307211749717
revision	2
ontime	7800.1876569986
livetime	7701.4169841766
ontime4	4650.0855191946
ontime5	7800.2286970019
ontime6	5116.7459624708
ontime7	7800.1876569986
ontime8	5282.1183031201
ontime9	4996.7067221999
l2events	1073601

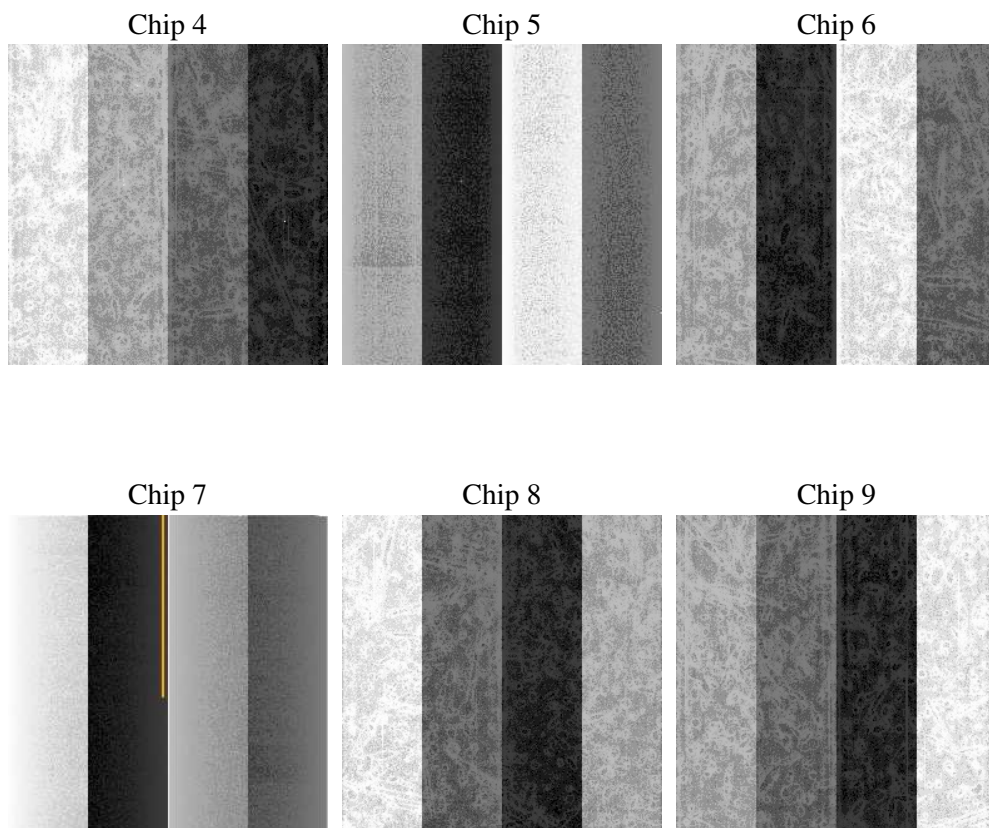
## 2 OBI

### 2.1 OBI

#### 2.1.1 Images



#### 2.1.2 Bias



### 2.1.3 Parameters

obi_num	0
ascdsver	7.6.7.2
caldbver	3.2.2
date	2006-05-19T02:37:49
revision	2

sched_exp_time	0.0
ontime	7801.0928941071
ontime4	4650.8676362932
ontime5	7801.0928941071
ontime6	5117.5691195726
ontime7	7801.0928941071
ontime8	5282.8593802452
ontime9	4997.6529993117
l1events	1414816

### 2.1.4 Events

	ccd 4	ccd 5	ccd 6	ccd 7	ccd 8	ccd 9
level 1 events	180865	295345	208002	312488	221860	196256
rejected events	38554	60804	39519	56850	43749	38021
rejected %	21%	20%	18%	18%	19%	19%

	ccd 4	ccd 5	ccd 6	ccd 7	ccd 8	ccd 9
grade 0 events	82462	29134	91333	44669	96486	86954
	45%	9%	43%	14%	43%	44%
grade 1 events	674	124	467	110	535	525
	0%	0%	0%	0%	0%	0%
grade 2 events	22714	108955	29150	77217	31504	26909
	12%	36%	14%	24%	14%	13%
grade 3 events	9274	7499	10562	18302	11548	10189
	5%	2%	5%	5%	5%	5%
grade 4 events	9407	7175	10419	18226	11645	10008
	5%	2%	5%	5%	5%	5%
grade 5 events	2173	6265	2602	7048	3065	2717
	1%	2%	1%	2%	1%	1%
grade 6 events	18454	81778	27019	97224	26928	24175
	10%	27%	12%	31%	12%	12%
grade 7 events	35707	54415	36450	49692	40149	34779
	19%	18%	17%	15%	18%	17%

## 2.2 Compared Parameters

Parameter	Planned	Actual	Parameter	Planned	Actual
Instrument	ACIS	ACIS	Obspar format version number	6	6
Detector	ACIS-456789	ACIS-456789	Obspar file type	PREDICTED	ACTUAL
Grating	NONE	NONE	Obspar update status	NONE	UPDATED
Data mode	FAINT	FAINT	On-chip summing requested	N	N
Observation mode	SECONDARY	SECONDARY	Subarray requested	NONE	NONE
Pointing RA	0	263.9831531583296	Alternating exposures requested	N	N
Pointing Dec	0	-21.97607911682037	Primary exposure time	0.000000	3.2
Pointing Roll	0.0	90.3072117497174			
SIM focus pos (mm)	-0.684267	-0.7809083437167272			
SIM defocus (mm)	0	0.7524282956875696			
SIM translation stage pos (mm)	-190.132523	250.466033080201			
SIM translation stage offset (mm)	0	-0.01005468664627074			
Observation start time	200584036.529971	200584035.50498			
Observation start date	2004-05-10T13:47:17	2004-05-10T13:47:15			
Observation end time	200620284.631569	200620283.60658			
Observation end date	2004-05-10T23:51:25	2004-05-10T23:51:23			
Read mode	TIMED	TIMED			

## 2.3 Aspect



## **2.4 Star Slots**

## **2.5 FID Slots**



## A Summary

### A.1 Status

V&V Scientist	Jen Lauer
V&V Date (YYYY-MM-DD)	2006.05.19
V&V Edition	1
V&V Disposition and Status	OK
V&V Charge Time	7.80018765

### A.2 Comments