

# V&V Reference Report

## L2 ASCDS Version : 7.6.7.2

Observation 60229 - L2 Version <sub>e</sub>1  
Chandra X-Ray Center

L2 Processing Date : May 18 2006

## Contents

<b>1</b>	<b>Front</b>	<b>2</b>
<b>2</b>	<b>OBI Primary</b>	<b>3</b>
2.1	OBI . . . . .	3
2.1.1	Images . . . . .	3
2.1.2	Bias . . . . .	3
2.1.3	Parameters . . . . .	4
2.1.4	Events . . . . .	4
2.2	Compared Parameters . . . . .	5
2.3	Aspect . . . . .	6
2.4	Star Slots . . . . .	8
2.5	FID Slots . . . . .	8
<b>3</b>	<b>OBI Secondary</b>	<b>8</b>
3.1	OBI . . . . .	8
3.1.1	Images . . . . .	8
3.1.2	Bias . . . . .	8
3.1.3	Parameters . . . . .	9
3.1.4	Events . . . . .	9
<b>A</b>	<b>Summary</b>	<b>10</b>
A.1	Status . . . . .	10
A.2	Comments . . . . .	10

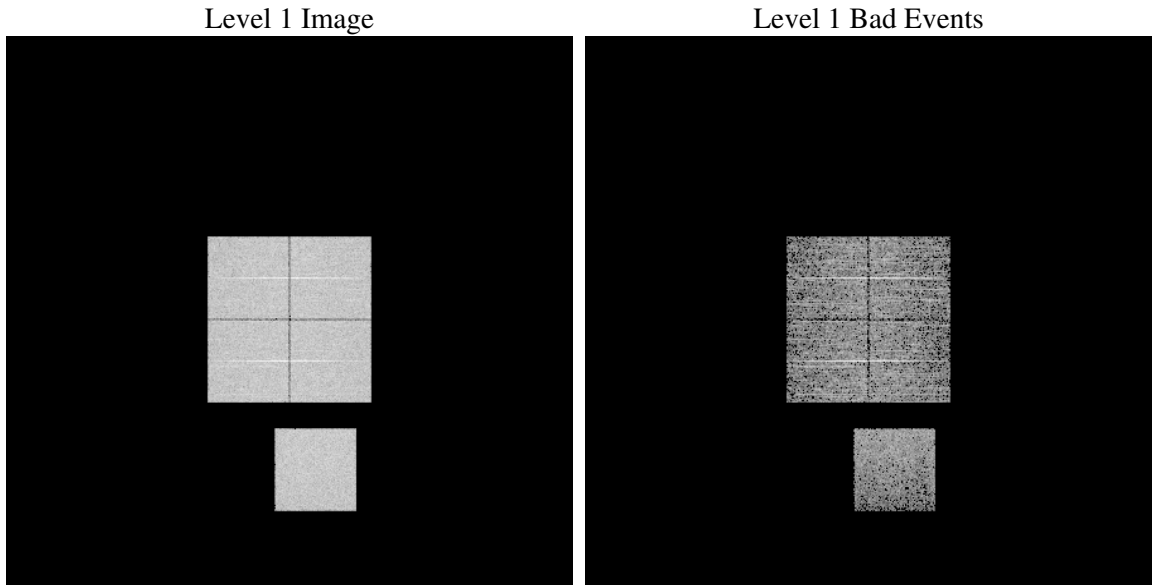
# 1 Front

seq_num	&#160
obs_id	60229
title	ACIS-01237 diagnostics
observer	CHANDRA engineering request/realtime commanding
object	&#160
dtcycle	0
cycle	P
ra_targ	0.0
dec_targ	0.0
ra_nom	108.00059513511
dec_nom	-13.028582784639
roll_nom	238.27378928355
revision	2
ontime	5196.7162404358
livetime	2010.2417839156
ontime0	5196.8632816076
ontime1	5196.839330554
ontime2	5196.7983204424
ontime3	5196.7572804391
ontime7	5196.7162404358
l2events	305487

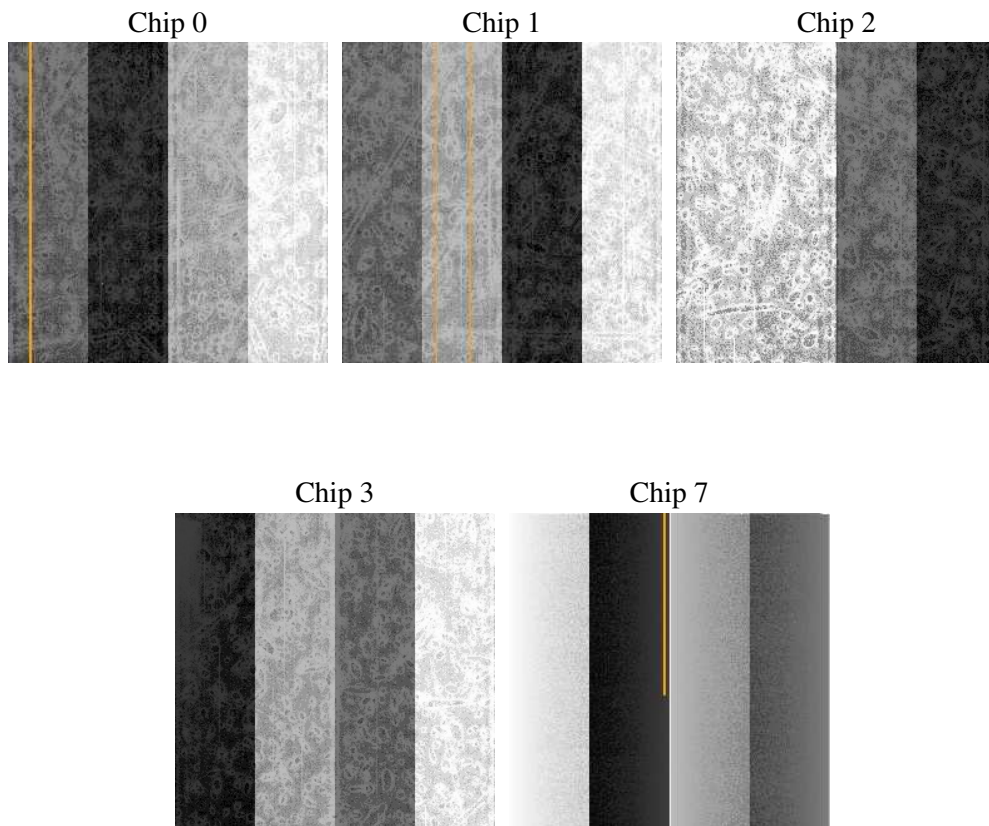
## 2 OBI Primary

### 2.1 OBI

#### 2.1.1 Images



#### 2.1.2 Bias



### 2.1.3 Parameters

obi_num	0
ascdsver	7.6.7.2
caldbver	3.2.2
date	2006-05-18T08:42:13
revision	2

sched_exp_time	0.0
ontime	5201.2614548802
ontime0	5201.2614548802
ontime1	5201.2614548802
ontime2	5201.2614548802
ontime3	5201.2614548802
ontime7	5201.2614548802
llevents	413831

### 2.1.4 Events

	ccd 0	ccd 1	ccd 2	ccd 3	ccd 7
level 1 events	81240	82292	83694	82740	83865
rejected events	17807	18618	19438	18482	17697
rejected %	21%	22%	23%	22%	21%

	ccd 0	ccd 1	ccd 2	ccd 3	ccd 7
grade 0 events	35085	34716	35971	36152	11716
	43%	42%	42%	43%	13%
grade 1 events	163	155	181	166	27
	0%	0%	0%	0%	0%
grade 2 events	11017	11318	11036	11029	20187
	13%	13%	13%	13%	24%
grade 3 events	4143	4245	4262	4152	4835
	5%	5%	5%	5%	5%
grade 4 events	4103	4188	4150	4260	4783
	5%	5%	4%	5%	5%
grade 5 events	1013	1042	1000	1057	1983
	1%	1%	1%	1%	2%
grade 6 events	9162	9266	8893	8713	24722
	11%	11%	10%	10%	29%
grade 7 events	16554	17362	18201	17211	15612
	20%	21%	21%	20%	18%

## 2.2 Compared Parameters

Parameter	Planned	Actual	Parameter	Planned	Actual
Instrument	ACIS	ACIS	Obspar format version number	6	6
Detector	ACIS-01237	ACIS-01237	Obspar file type	PREDICTED	ACTUAL
Grating	NONE	NONE	Obspar update status	NONE	UPDATED
Data mode	FAINT	FAINT	On-chip summing requested	N	N
Observation mode	SECONDARY	SECONDARY	Subarray requested	NONE	NONE
Pointing RA	0	108.0005951351134	Alternating exposures requested	N	Y
Pointing Dec	0	-13.02858278463887	Primary exposure time	0.000000	2
Pointing Roll	0.0	238.2737892835482	Secondary exposure time	N/A	3.2
SIM focus pos (mm)	-0.782348	-0.6828225247311905	Duty cycle	N/A	1
SIM defocus (mm)	0	0.8505141146731063			
SIM translation stage pos (mm)	-233.592463	250.466033080201			
SIM translation stage offset (mm)	0	-0.01005468664627074			
Observation start time	201303283.161743	201303282.13674			
Observation start date	2004-05-18T21:34:43	2004-05-18T21:34:42			
Observation end time	201326435.862766	201326434.83777			
Observation end date	2004-05-19T04:00:36	2004-05-19T04:00:34			
Read mode	TIMED	TIMED			

## 2.3 Aspect



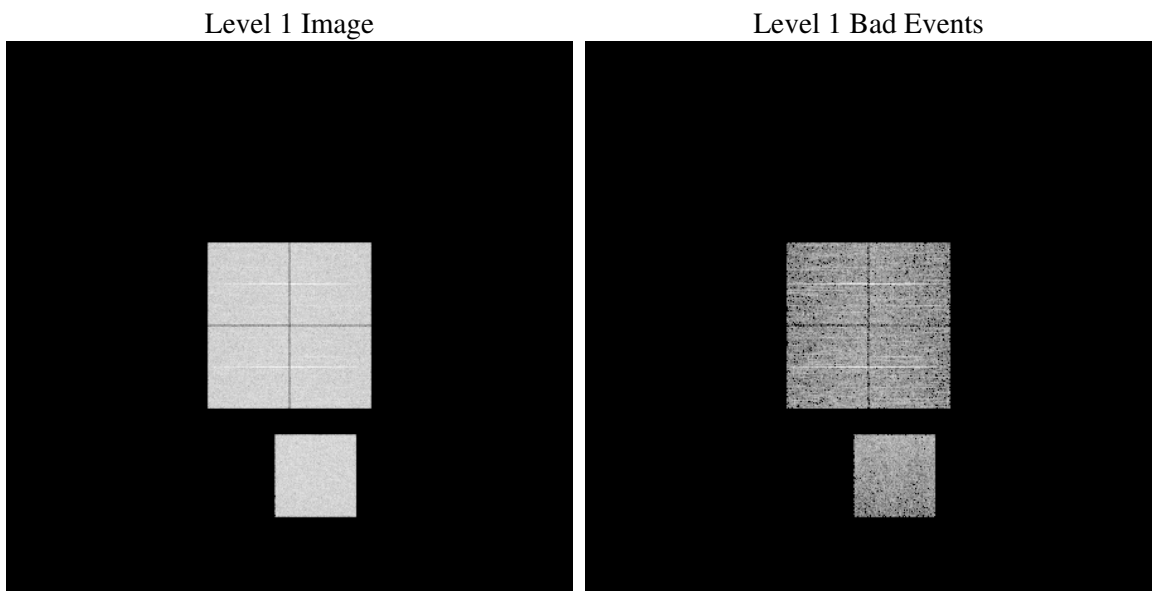
## 2.4 Star Slots

## 2.5 FID Slots

# 3 OBI Secondary

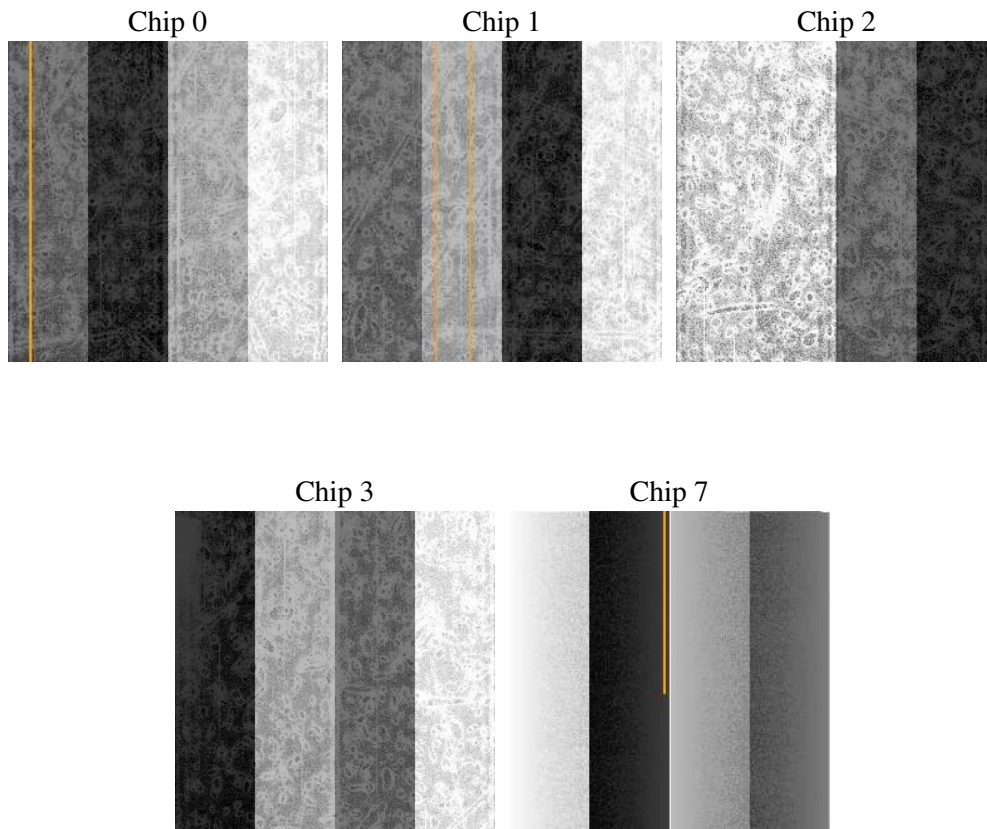
## 3.1 OBI

### 3.1.1 Images



### 3.1.2 Bias





### 3.1.3 Parameters

obi_num	0
ascdsver	7.6.7.2
caldsver	3.2.2
date	2006-05-18T08:47:59
revision	2

sched_exp_time	0.0
ontime	3260.4862313271
ontime0	3260.4862313271
ontime1	3260.4862313271
ontime2	3260.4862313271
ontime3	3260.4862313271
ontime7	3260.4862313271
l1events	621995

### 3.1.4 Events

	ccd 0	ccd 1	ccd 2	ccd 3	ccd 7
level 1 events	121599	122871	124776	124787	127962
rejected events	22844	23207	24892	24485	24049
rejected %	18%	18%	19%	19%	18%

	ccd 0	ccd 1	ccd 2	ccd 3	ccd 7
grade 0 events	54465	54759	55767	56246	17450
	44%	44%	44%	45%	13%
grade 1 events	357	281	337	345	50
	0%	0%	0%	0%	0%
grade 2 events	17243	17727	16862	17145	31767
	14%	14%	13%	13%	24%
grade 3 events	6267	6439	6595	6603	7310
	5%	5%	5%	5%	5%
grade 4 events	6515	6415	6599	6582	7099
	5%	5%	5%	5%	5%
grade 5 events	1426	1530	1440	1554	2908
	1%	1%	1%	1%	2%
grade 6 events	14351	14419	14164	13822	40402
	11%	11%	11%	11%	31%
grade 7 events	20975	21301	23012	22490	20976
	17%	17%	18%	18%	16%

## A Summary

### A.1 Status

V&V Scientist	Jen Lauer
V&V Date (YYYY-MM-DD)	2006.05.18
V&V Edition	1
V&V Disposition and Status	OK
V&V Charge Time	8.45473347

### A.2 Comments