

V&V Reference Report

L2 ASCDS Version : 7.6.7

Observation 59669 - L2 Version 002
Chandra X-Ray Center

L2 Processing Date: Mar 3 2006

Contents

1	Front	2
2	OBI	3
2.1	OBI	3
2.1.1	Images	3
2.1.2	Bias	3
2.1.3	Parameters	4
2.1.4	Events	4
2.2	Compared Parameters	5
2.3	Aspect	6
2.4	Star Slots	8
2.5	FID Slots	8
A	Summary	9
A.1	Status	9
A.2	Comments	9

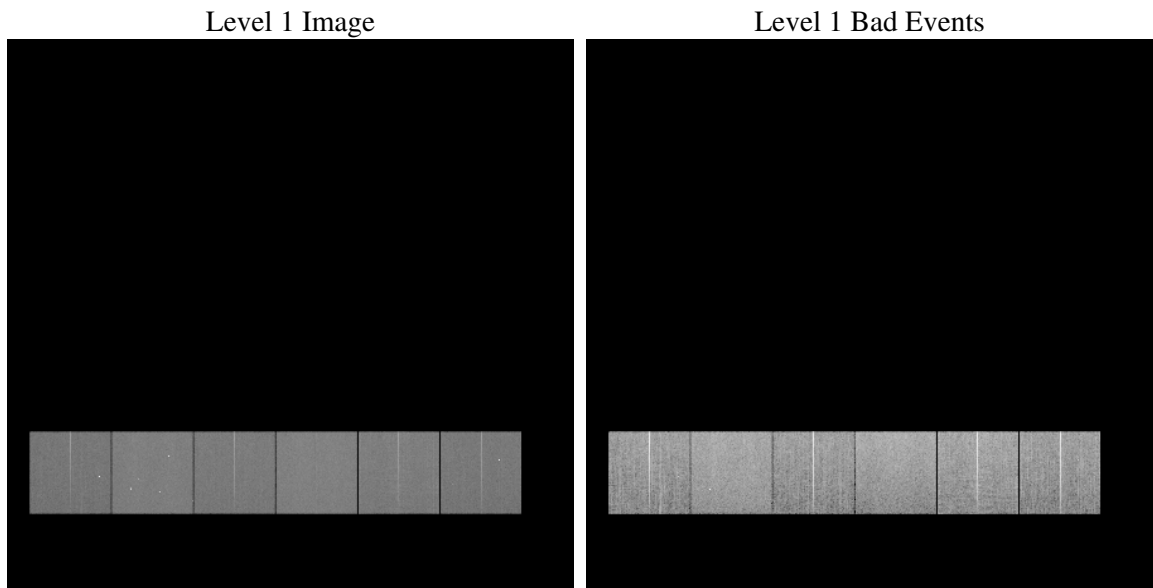
1 Front

seq_num	
obs_id	59669
title	ACIS-456789 diagnostics
observer	CHANDRA engineering request/realtime commanding
object	
dtcycle	0
cycle	P
ra_targ	0.0
dec_targ	0.0
ra_nom	201.0036457496
dec_nom	-7.5273153165465
roll_nom	245.65229832798
revision	2
ontime	15798.399941146
livetime	15598.351088437
ontime4	12631.961375922
ontime5	15798.399941146
ontime6	13746.859174937
ontime7	15798.399941146
ontime8	14145.499960065
ontime9	13309.327372402
l2events	2022588

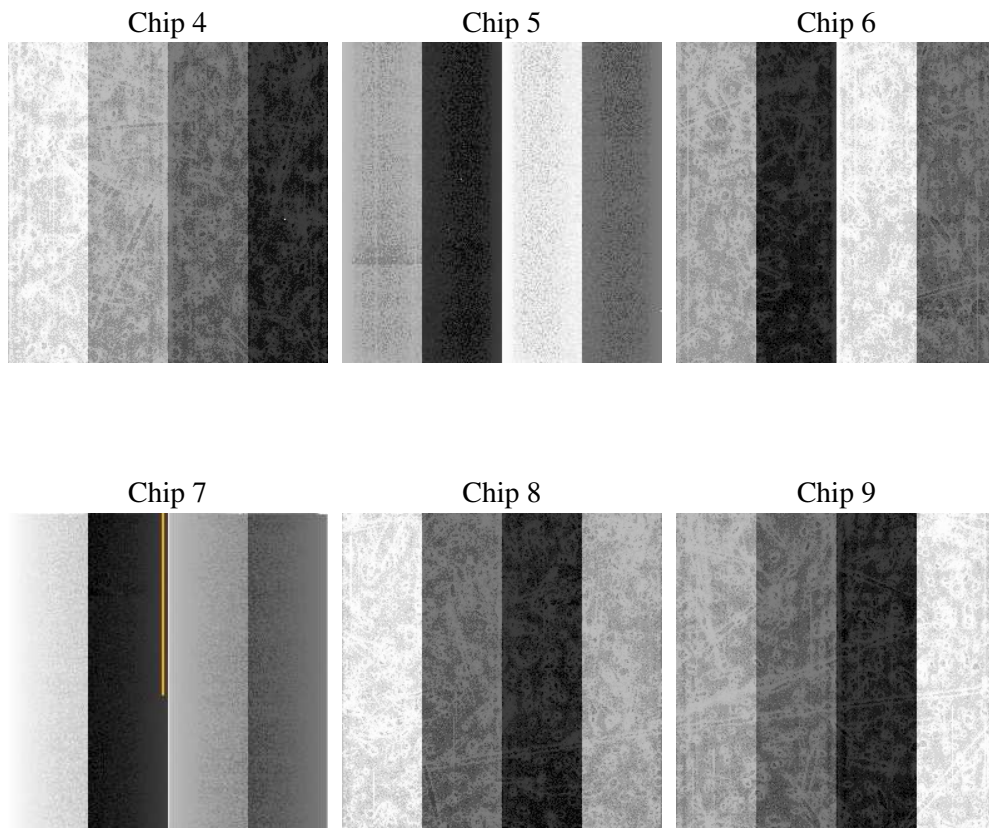
2 OBI

2.1 OBI

2.1.1 Images



2.1.2 Bias



2.1.3 Parameters

obi_num	0
ascdsver	7.6.7
caldsver	3.2.1
date	2006-03-03T15:12:35
revision	2

sched_exp_time	0.0
ontime	15799.920719266
ontime4	12633.482154042
ontime5	15799.920719266
ontime6	13748.379953057
ontime7	15799.920719266
ontime8	14147.020738184
ontime9	13310.848150522
l1events	2824344

2.1.4 Events

	ccd 4	ccd 5	ccd 6	ccd 7	ccd 8	ccd 9
level 1 events	406191	506235	454004	532648	492066	433200
rejected events	103391	121947	101960	117098	118312	102309
rejected %	25%	24%	22%	21%	24%	23%

	ccd 4	ccd 5	ccd 6	ccd 7	ccd 8	ccd 9
grade 0 events	175778	44275	190265	68805	201083	178981
	43%	8%	41%	12%	40%	41%
grade 1 events	1379	212	1000	221	1100	1108
	0%	0%	0%	0%	0%	0%
grade 2 events	48233	177216	61096	126981	65272	60248
	11%	35%	13%	23%	13%	13%
grade 3 events	20009	12102	21901	28640	25047	21103
	4%	2%	4%	5%	5%	4%
grade 4 events	19986	11660	22032	28375	24677	20988
	4%	2%	4%	5%	5%	4%
grade 5 events	5944	11958	6592	13725	8196	7019
	1%	2%	1%	2%	1%	1%
grade 6 events	38794	139035	56750	162749	57675	49571
	9%	27%	12%	30%	11%	11%
grade 7 events	96068	109777	94368	103152	109016	94182
	23%	21%	20%	19%	22%	21%

2.2 Compared Parameters

Parameter	Planned	Actual	Parameter	Planned	Actual
Instrument	ACIS	ACIS	Obspar format version number	6	6
Detector	ACIS-456789	ACIS-456789	Obspar file type	PREDICTED	ACTUAL
Grating	NONE	NONE	Obspar update status	NONE	UPDATED
Data mode	FAINT	FAINT	On-chip summing requested	N	N
Observation mode	SECONDARY	SECONDARY	Subarray requested	NONE	NONE
Pointing RA	0	201.0036457495988	Alternating exposures requested	N	N
Pointing Dec	0	-7.527315316546495	Primary exposure time	3.2	3.2
Pointing Roll	0.0	245.6522983279817			
SIM focus pos (mm)	-0.684267	-0.7809083437167272			
SIM defocus (mm)	0	0.7524282956875696			
SIM translation stage pos (mm)	-190.132523	250.4635187648994			
SIM translation stage offset (mm)	0	-0.007540371344731511			
Observation start time	231875211.283126	231875210.25813			
Observation start date	2005-05-07T17:46:51	2005-05-07T17:46:50			
Observation end time	231897511.184142	231897510.15914			
Observation end date	2005-05-07T23:58:31	2005-05-07T23:58:30			
Read mode	TIMED	TIMED			

2.3 Aspect

2.4 Star Slots

2.5 FID Slots

A Summary

A.1 Status

V&V Scientist	Beth Sundheim
V&V Date (YYYY-MM-DD)	2006.03.03
V&V Edition	1
V&V Disposition and Status	OK
V&V Charge Time	15.7983999

A.2 Comments