

V&V Reference Report

L2 ASCDS Version : 7.6.7.1

Observation 59509 - L2 Version 002
Chandra X-Ray Center

L2 Processing Date : Mar 19 2006

Contents

1	Front	2
2	OBI	3
2.1	OBI	3
2.1.1	Images	3
2.1.2	Bias	3
2.1.3	Parameters	4
2.1.4	Events	4
2.2	Compared Parameters	5
2.3	Aspect	6
2.4	Star Slots	8
2.5	FID Slots	8
A	Summary	9
A.1	Status	9
A.2	Comments	9

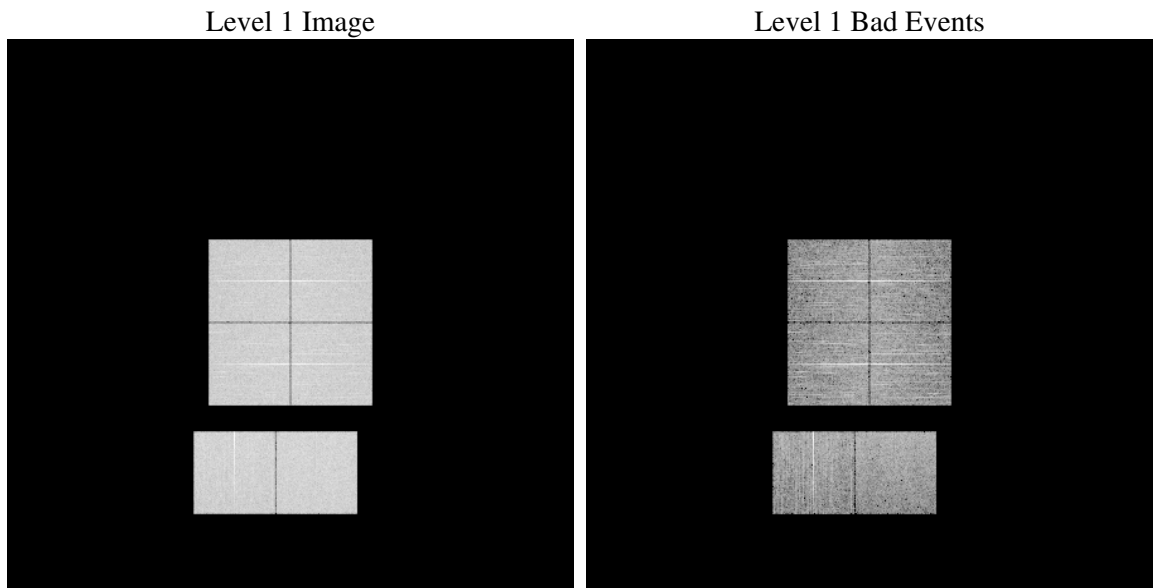
1 Front

seq_num	
obs_id	59509
title	ACIS-012367 diagnostics
observer	CHANDRA engineering request/realtime commanding
object	
dtcycle	0
cycle	P
ra_targ	0.0
dec_targ	0.0
ra_nom	359.97619042458
dec_nom	0.015837808085285
roll_nom	113.48449660196
revision	2
ontime	6911.1499570012
livetime	6823.6368148508
ontime0	6817.2023788989
ontime1	6911.2320370078
ontime2	6807.5615678132
ontime3	6859.2532119751
ontime6	6911.3141169846
ontime7	6911.1499570012
l2events	909841

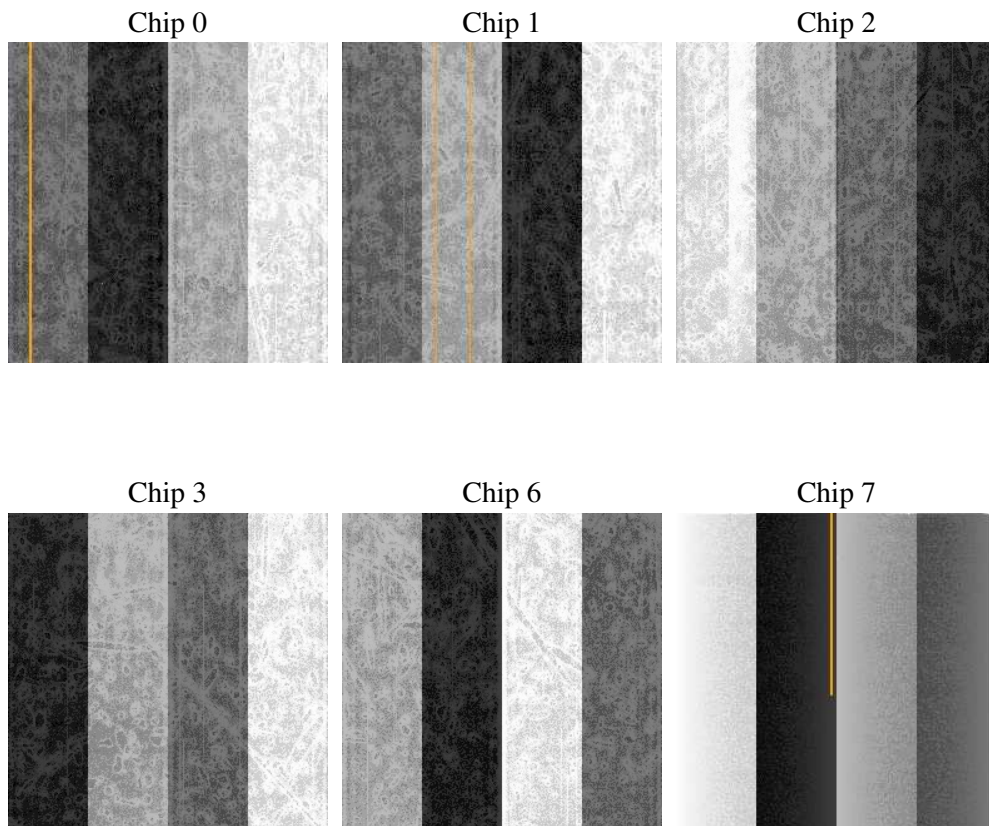
2 OBI

2.1 OBI

2.1.1 Images



2.1.2 Bias



2.1.3 Parameters

obi_num	0
ascdsver	7.6.7.1
caldbver	3.2.1
date	2006-03-19T14:58:58
revision	2

sched_exp_time	0.0
ontime	6913.0770868361
ontime0	6819.0884687304
ontime1	6913.0770868361
ontime2	6809.3655776381
ontime3	6861.2213818133
ontime6	6913.0770868361
ontime7	6913.0770868361
l1events	1241021

2.1.4 Events

	ccd 0	ccd 1	ccd 2	ccd 3	ccd 6	ccd 7
level 1 events	199111	201342	203973	206832	213073	216690
rejected events	44681	44572	48091	49570	48644	48335
rejected %	22%	22%	23%	23%	22%	22%

	ccd 0	ccd 1	ccd 2	ccd 3	ccd 6	ccd 7
grade 0 events	84963	85380	87028	88067	89010	28200
	42%	42%	42%	42%	41%	13%
grade 1 events	506	396	547	552	473	79
	0%	0%	0%	0%	0%	0%
grade 2 events	26739	28121	26333	27001	28680	51072
	13%	13%	12%	13%	13%	23%
grade 3 events	10050	9860	10251	10217	10284	11928
	5%	4%	5%	4%	4%	5%
grade 4 events	10001	10111	10264	10110	10527	11667
	5%	5%	5%	4%	4%	5%
grade 5 events	2780	3000	2623	2933	3047	5606
	1%	1%	1%	1%	1%	2%
grade 6 events	22740	23365	22077	21946	26006	65564
	11%	11%	10%	10%	12%	30%
grade 7 events	41332	41109	44850	46006	45046	42574
	20%	20%	21%	22%	21%	19%

2.2 Compared Parameters

Parameter	Planned	Actual	Parameter	Planned	Actual
Instrument	ACIS	ACIS	Obspar format version number	6	6
Detector	ACIS-012367	ACIS-012367	Obspar file type	PREDICTED	ACTUAL
Grating	NONE	NONE	Obspar update status	NONE	UPDATED
Data mode	FAINT	FAINT	On-chip summing requested	N	N
Observation mode	SECONDARY	SECONDARY	Subarray requested	NONE	NONE
Pointing RA	0	359.9761904245823	Alternating exposures requested	N	N
Pointing Dec	0	0.01583780808528493	Primary exposure time	3.2	3.2
Pointing Roll	0.0	113.4844966019598			
SIM focus pos (mm)	-0.782348	-0.6828225247311905			
SIM defocus (mm)	0	0.8505141146731063			
SIM translation stage pos (mm)	-233.592463	250.466033080201			
SIM translation stage offset (mm)	0	-0.01005468664627074			
Observation start time	240103120.359002	240103119.33401			
Observation start date	2005-08-10T23:18:40	2005-08-10T23:18:39			
Observation end time	240142381.960801	240142380.93581			
Observation end date	2005-08-11T10:13:02	2005-08-11T10:13:00			
Read mode	TIMED	TIMED			

2.3 Aspect

2.4 Star Slots

2.5 FID Slots

A Summary

A.1 Status

V&V Scientist	Doug Morgan
V&V Date (YYYY-MM-DD)	2006.03.20
V&V Edition	1
V&V Disposition and Status	OK
V&V Charge Time	6.91114995

A.2 Comments