

# V&V Reference Report

## L2 ASCDS Version : 8.4.3

Observation 59099 - L2 Version 2  
Chandra X-Ray Center

L2 Processing Date : Mar 26 2012

## Contents

<b>1</b>	<b>Front</b>	<b>2</b>
<b>2</b>	<b>OBI</b>	<b>3</b>
2.1	OBI . . . . .	3
2.1.1	Images . . . . .	3
2.1.2	Bias . . . . .	3
2.1.3	Parameters . . . . .	4
2.1.4	Events . . . . .	4
2.2	Compared Parameters . . . . .	5
2.3	Star Slots . . . . .	6
2.4	FID Slots . . . . .	6
<b>A</b>	<b>Summary</b>	<b>7</b>
A.1	Status . . . . .	7
A.2	Comments . . . . .	7

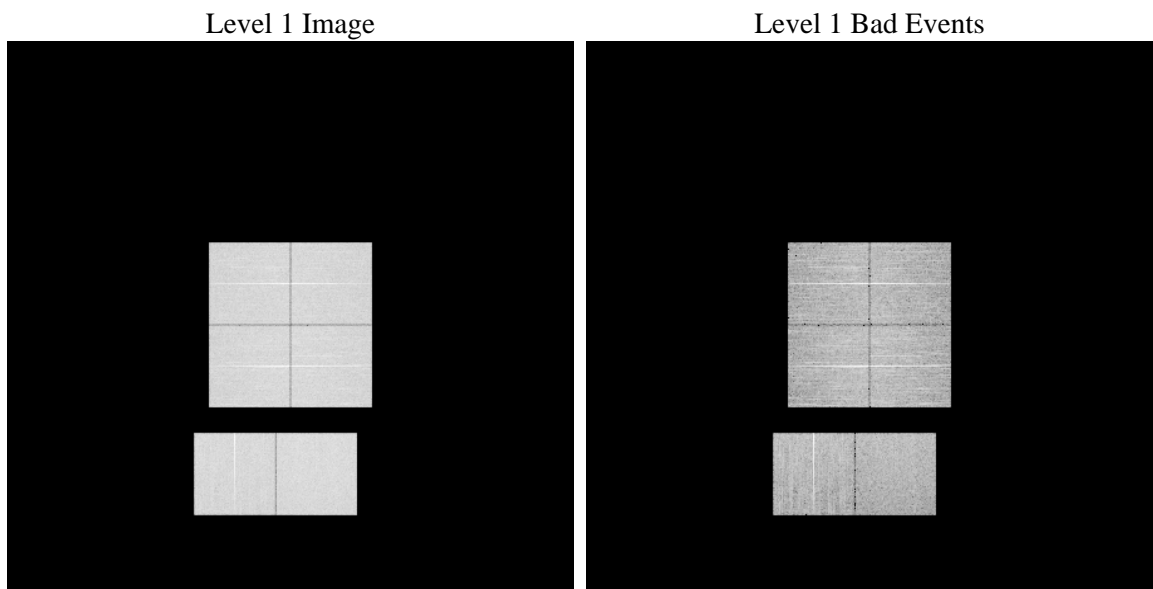
# 1 Front

seq_num	&#160	Sequence number
obs_id	59099	Observation id
title	ACIS-012367 diagnostics	Proposal title
observer	CHANDRA engineering request/realtime commanding	Principal investig
object	&#160	Source name
dtcycle	0	&#160
cycle	P	events from which exps? Prim/Second/Both
ra_targ	0.0	Observer's specified target RA [deg]
dec_targ	0.0	Observer's specified target Dec [deg]
ra_nom	160.02474210301	Nominal RA [deg]
dec_nom	-19.983337898557	Nominal Dec [deg]
roll_nom	2.786534250672	Nominal Roll [deg]
revision	2	Processing version of data
ontime	7558.236551106	Sum of GTIs [s]
livetime	7462.5296088722	Livetime [s]
ontime0	7558.1955111027	Sum of GTIs [s]
ontime1	7558.1544710994	Sum of GTIs [s]
ontime2	7558.1134310961	Sum of GTIs [s]
ontime3	7558.2775911093	Sum of GTIs [s]
ontime6	7558.0723911226	Sum of GTIs [s]
ontime7	7558.236551106	Sum of GTIs [s]
l2events	887092	Number of level 2 events

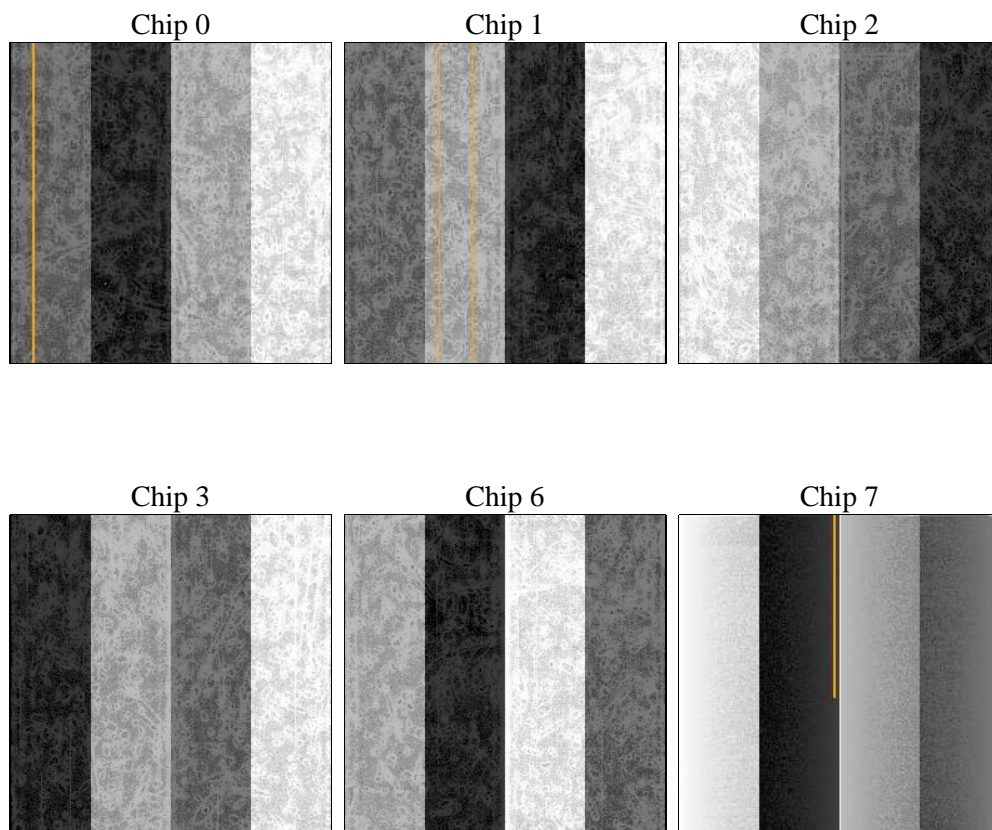
## 2 OBI

### 2.1 OBI

#### 2.1.1 Images



#### 2.1.2 Bias



### 2.1.3 Parameters

obi_num	0	Obi number	sched_exp_time	0.0	[s] Scheduled observation exposure time
ascdsver	8.4.3	Processing system revision	ontime	7558.236551106	Sum of GTIs [s]
caldsver	4.4.8	&#160	ontime0	7558.1955111027	Sum of GTIs [s]
date	2012-03-26T08:20:28	Date and time of file creation	ontime1	7558.1544710994	Sum of GTIs [s]
revision	2	Processing version of data	ontime2	7558.1134310961	Sum of GTIs [s]
			ontime3	7558.2775911093	Sum of GTIs [s]
			ontime6	7558.0723911226	Sum of GTIs [s]
			ontime7	7558.236551106	Sum of GTIs [s]
			l1events	1309172	Number of level 1 events

### 2.1.4 Events

	ccd 0	ccd 1	ccd 2	ccd 3	ccd 6	ccd 7		ccd 0	ccd 1	ccd 2	ccd 3	ccd 6	ccd 7
level 1 events	211382	208944	217258	218431	220871	232286	grade 0 events	82371	82523	85293	85377	85022	40340
rejected events	62156	59299	66413	66920	64842	55259		38%	39%	39%	39%	38%	17%
rejected %	29%	28%	30%	30%	29%	23%	grade 1 events	581	477	640	607	500	174
								0%	0%	0%	0%	0%	0%
							grade 2 events	26723	27108	25474	26251	27357	38933
								12%	12%	11%	12%	12%	16%
							grade 3 events	10084	9780	10241	10211	9991	17737
								4%	4%	4%	4%	4%	7%
							grade 4 events	10047	9763	10127	10156	10052	17396
								4%	4%	4%	4%	4%	7%
							grade 5 events	3366	3529	3274	3669	3816	9170
								1%	1%	1%	1%	1%	3%
							grade 6 events	22031	22391	21637	21508	25725	64948
								10%	10%	9%	9%	11%	27%
							grade 7 events	56179	53373	60572	60652	58408	43588
								26%	25%	27%	27%	26%	18%

## 2.2 Compared Parameters

Parameter	Planned	Actual	Parameter	Planned	Actual
Instrument	ACIS	ACIS	Obspar format version number	7	7
Detector	ACIS-012367	ACIS-012367	Obspar file type	PREDICTED	ACTUAL
Grating	NONE	NONE	Obspar update status	NONE	UPDATED
Data mode	FAINT	FAINT	On-chip summing requested	N	N
Observation mode	SECONDARY	SECONDARY	Subarray requested	NONE	NONE
[deg] Pointing RA	0	160.0247421030084	Alternating exposures requested	N	N
[deg] Pointing Dec	0	-19.98333789855749	[s] Primary exposure time	3.2	3.2
[deg] Pointing Roll	0.0	2.786534250671982			
[mm] SIM focus pos	-0.782348	-0.6828225247311905			
[mm] SIM defocus	0	0.8505141146731063			
[mm] SIM translation stage pos	-233.592463	250.466033080201			
[mm] SIM translation stage offset	0	-0.01005468664627074			
[s] Observation start time (MET)	257279128.151959	257279127.12698			
Observation start date	2006-02-25T18:25:28	2006-02-25T18:25:27			
[s] Observation end time (MET)	257302184.50303	257302183.47805			
Observation end date	2006-02-26T00:49:45	2006-02-26T00:49:43			
Read mode	TIMED	TIMED			

## **2.3 Star Slots**

## **2.4 FID Slots**

## A Summary

### A.1 Status

V&V Scientist	Jen Lauer
V&V Date (YYYY-MM-DD)	2012.03.27
V&V Edition	1
V&V Disposition and Status	OK
V&V Charge Time	7.558236551106

### A.2 Comments