

V&V Reference Report

L2 ASCDS Version : 8.5.1.1

Observation 5849 - L2 Version 4
Chandra X-Ray Center

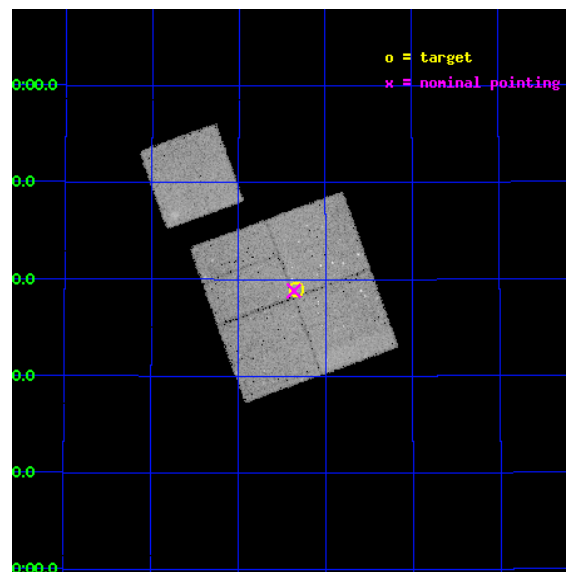
L2 Processing Date : Mar 7 2013

Contents

1	Front	2
2	OBI	3
2.1	OBI	3
2.1.1	Images	3
2.1.2	Bias	3
2.1.3	Parameters	4
2.1.4	Events	4
2.2	Compared Parameters	5
2.3	Aspect	6
2.4	Star Slots	9
2.4.1	Slot 3	9
2.4.2	Slot 4	10
2.4.3	Slot 5	11
2.4.4	Slot 6	12
2.4.5	Slot 7	13
2.5	FID Slots	14
2.5.1	Slot 0	14
2.5.2	Slot 1	15
2.5.3	Slot 2	16
A	Summary	17
A.1	Status	17
A.2	Comments	17

1 Front

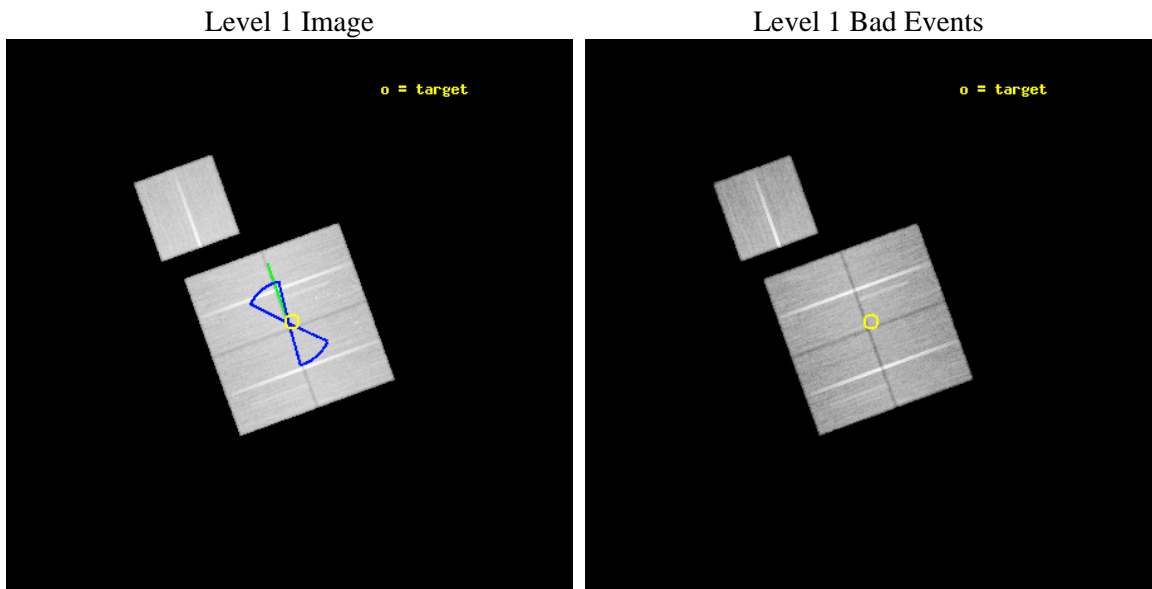
seq_num	900352	Sequence number
obs_id	5849	Observation id
title	Deep Chandra Imaging of the Extended Groth Strip: The Co-evolution of Black Holes and Galaxies	Proposal title
observer	Prof Kirpal Nandra	Principal investigator
object	EGS-5	Source name
dtcycle	0	
cycle	P	events from which exps? Prim/Second/Both
ra_targ	214.584915	Observer's specified target RA [deg]
dec_targ	52.65052	Observer's specified target Dec [deg]
ra_nom	214.59053452336	Nominal RA [deg]
dec_nom	52.647360682563	Nominal Dec [deg]
roll_nom	340.10657846887	Nominal Roll [deg]
revision	4	Processing version of data
ontime	50117.658943325	Sum of GTIs [s]
livetime	49462.834833147	Livetime [s]
ontime0	50114.517943144	Sum of GTIs [s]
ontime1	50117.658963233	Sum of GTIs [s]
ontime2	50114.517953187	Sum of GTIs [s]
ontime3	50117.658943325	Sum of GTIs [s]
ontime6	50114.517943203	Sum of GTIs [s]
l2events	132697	Number of level 2 events



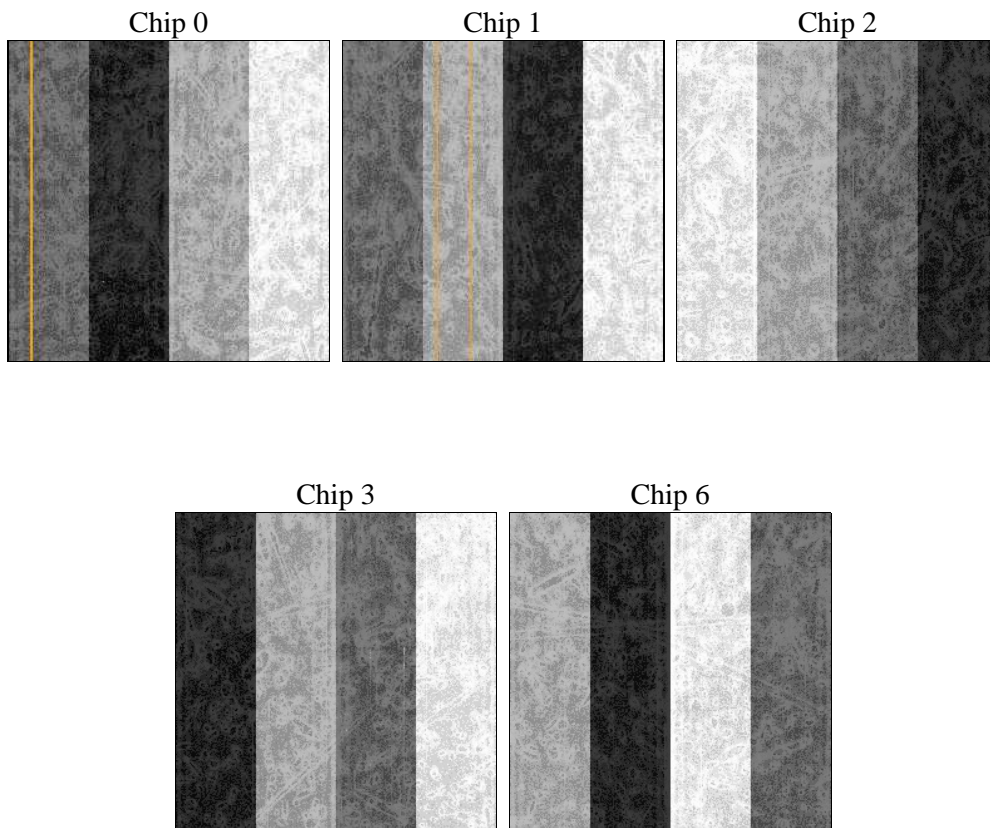
2 OBI

2.1 OBI

2.1.1 Images



2.1.2 Bias



2.1.3 Parameters

obi_num	0	Obi number	sched_exp_time	50000.000000	[s] Scheduled observation exposure time
ascdsver	8.5.1.1	Processing system revision	ontime	50117.658943325	Sum of GTIs [s]
caldsver	4.5.6	 	ontime0	50114.517943144	Sum of GTIs [s]
date	2013-03-07T19:09:50	Date and time of file creation	ontime1	50117.658963233	Sum of GTIs [s]
revision	4	Processing version of data	ontime2	50114.517953187	Sum of GTIs [s]
			ontime3	50117.658943325	Sum of GTIs [s]
			ontime6	50114.517943203	Sum of GTIs [s]
			l1events	1573328	Number of level 1 events

2.1.4 Events

	ccd 0	ccd 1	ccd 2	ccd 3	ccd 6
level 1 events	303853	296932	338255	320305	313983
rejected events	272915	261130	307940	289279	282234
rejected %	89%	87%	91%	90%	89%

	ccd 0	ccd 1	ccd 2	ccd 3	ccd 6
grade 0 events	10623	13225	10827	11498	10929
	3%	4%	3%	3%	3%
grade 1 events	144	132	171	202	136
	0%	0%	0%	0%	0%
grade 2 events	7702	7959	7270	6742	6938
	2%	2%	2%	2%	2%
grade 3 events	3584	3930	3397	3532	3666
	1%	1%	1%	1%	1%
grade 4 events	3336	3983	3389	3575	3625
	1%	1%	1%	1%	1%
grade 5 events	10975	12303	10617	12836	12686
	3%	4%	3%	4%	4%
grade 6 events	6005	7067	5727	5932	6912
	1%	2%	1%	1%	2%
grade 7 events	261484	248333	296857	275988	269091
	86%	83%	87%	86%	85%

2.2 Compared Parameters

Parameter	Planned	Actual	Parameter	Planned	Actual
Instrument	ACIS	ACIS	Obspar format version number	7	7
Detector	ACIS-01236	ACIS-01236	Obspar file type	PREDICTED	ACTUAL
Grating	NONE	NONE	Obspar update status	NONE	UPDATED
Data mode	VFAINT	VFAINT	Number of optional ACIS chips dropped	0	0
Observation mode	POINTING	POINTING	On-chip summing requested	N	N
[deg] Pointing RA	214.546122	214.5905345233569	Subarray requested	NONE	NONE
[deg] Pointing Dec	52.642446	52.64736068256324	Alternating exposures requested	N	N
[deg] Pointing Roll	339.933196	340.1065784688683	[s] Primary exposure time	0.000000	3.1
[deg] Roll angle	50.756000	50.756000			
[deg] Roll tolerance	25.000000	25.000000			
Roll constraint allows 180D rotation	Y	Y			
[mm] SIM focus pos	-0.782348	-0.7809083437167272			
[mm] SIM defocus	0	0.001439871863259334			
[mm] SIM translation stage pos	-233.592463	-233.5874344608287			
[mm] SIM translation stage offset	0	-0.005018542100998502			
[s] Observation start time (MET)	245423255.184000	245422063.92837			
Observation start date	2005-10-11T13:06:31	2005-10-11T12:47:43			
[s] Observation end time (MET)	245473255.184000	245474199.01827			
Observation end date	2005-10-12T02:59:51	2005-10-12T03:16:39			
Read mode	TIMED	TIMED			

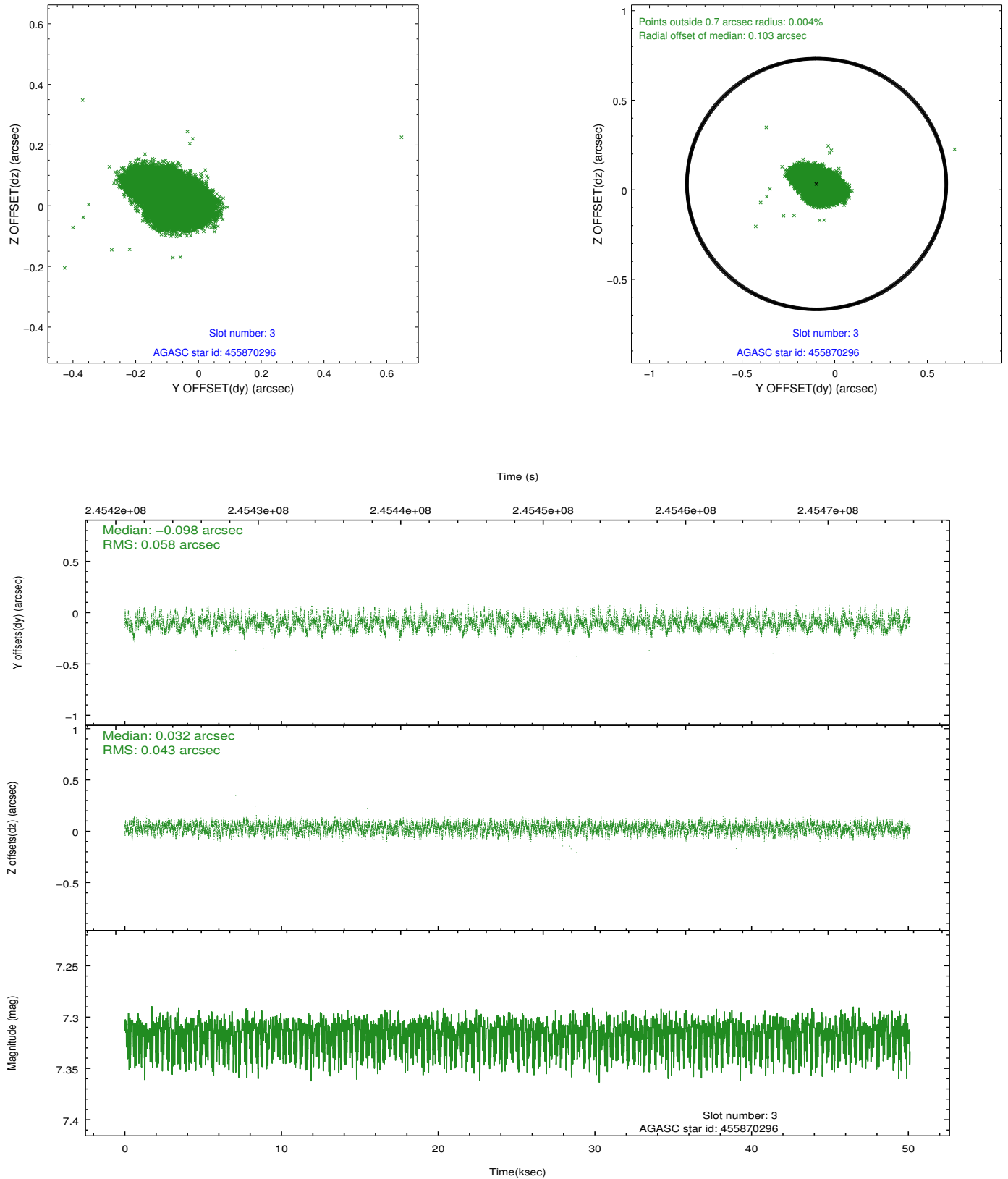
2.3 Aspect

Slot Statistics

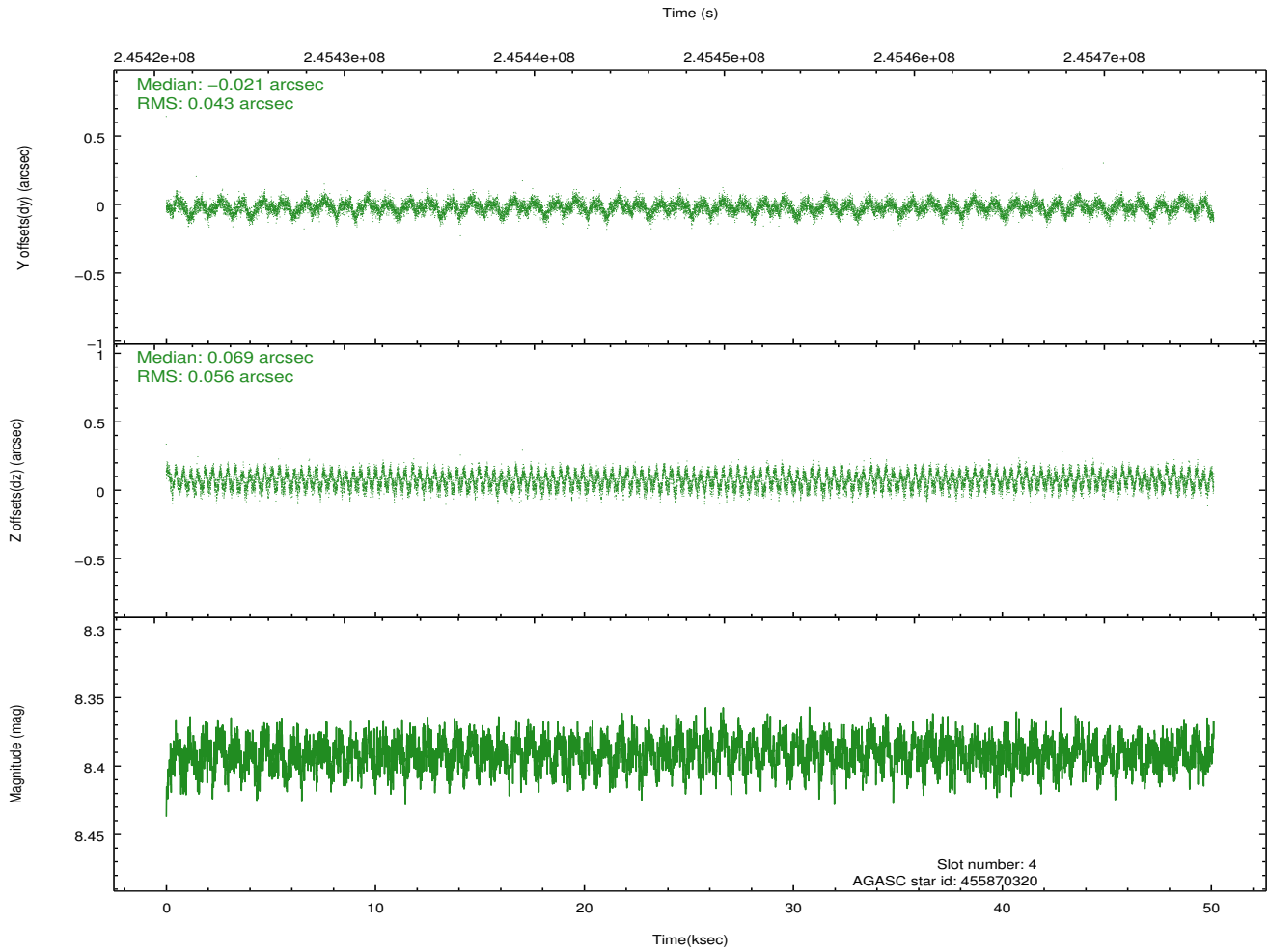
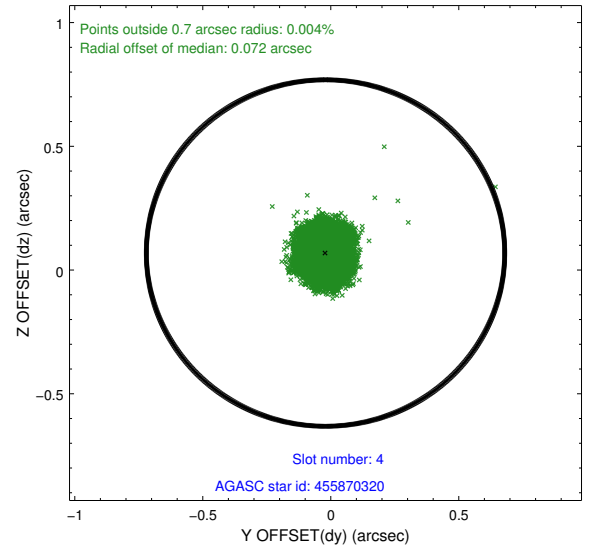
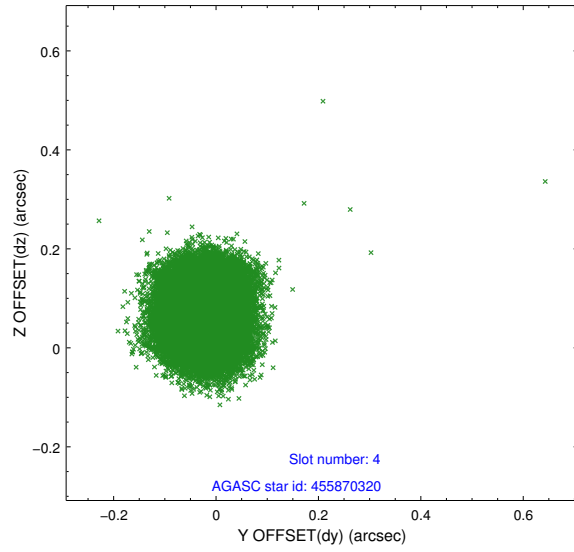
slot	status	id	mag	n_pts	med_dy	med_dz	dr1	dr2	ra	dec	mean_y	mean_z
0	FID	ACIS-I-2	7.14	12225	-0.068	-0.110	0.014	0.042	0.000000	0.000000	-760.73	-841.25
1	FID	ACIS-I-4	7.17	12225	0.098	0.074	0.009	0.021	0.000000	0.000000	2153.51	1065.11
2	FID	ACIS-I-5	7.22	12225	-0.131	0.105	0.013	0.034	0.000000	0.000000	-1814.64	1062.97
3	GUIDE	455870296	7.32	24451	-0.098	0.032	0.077	0.124	214.629779	52.033323	926.92	-1995.66
4	GUIDE	455870320	8.39	24442	-0.021	0.069	0.077	0.115	214.874440	52.401638	974.72	-565.00
5	GUIDE	455871352	8.12	24449	0.076	0.051	0.055	0.089	215.099961	52.172669	1727.82	-1164.08
6	GUIDE	505812088	8.16	24376	0.123	-0.136	0.067	0.110	214.186617	53.263562	-1494.86	1836.34
7	GUIDE	505806936	7.02	24448	-0.073	-0.016	0.068	0.102	213.820815	52.535927	-1362.67	-897.54

2.4 Star Slots

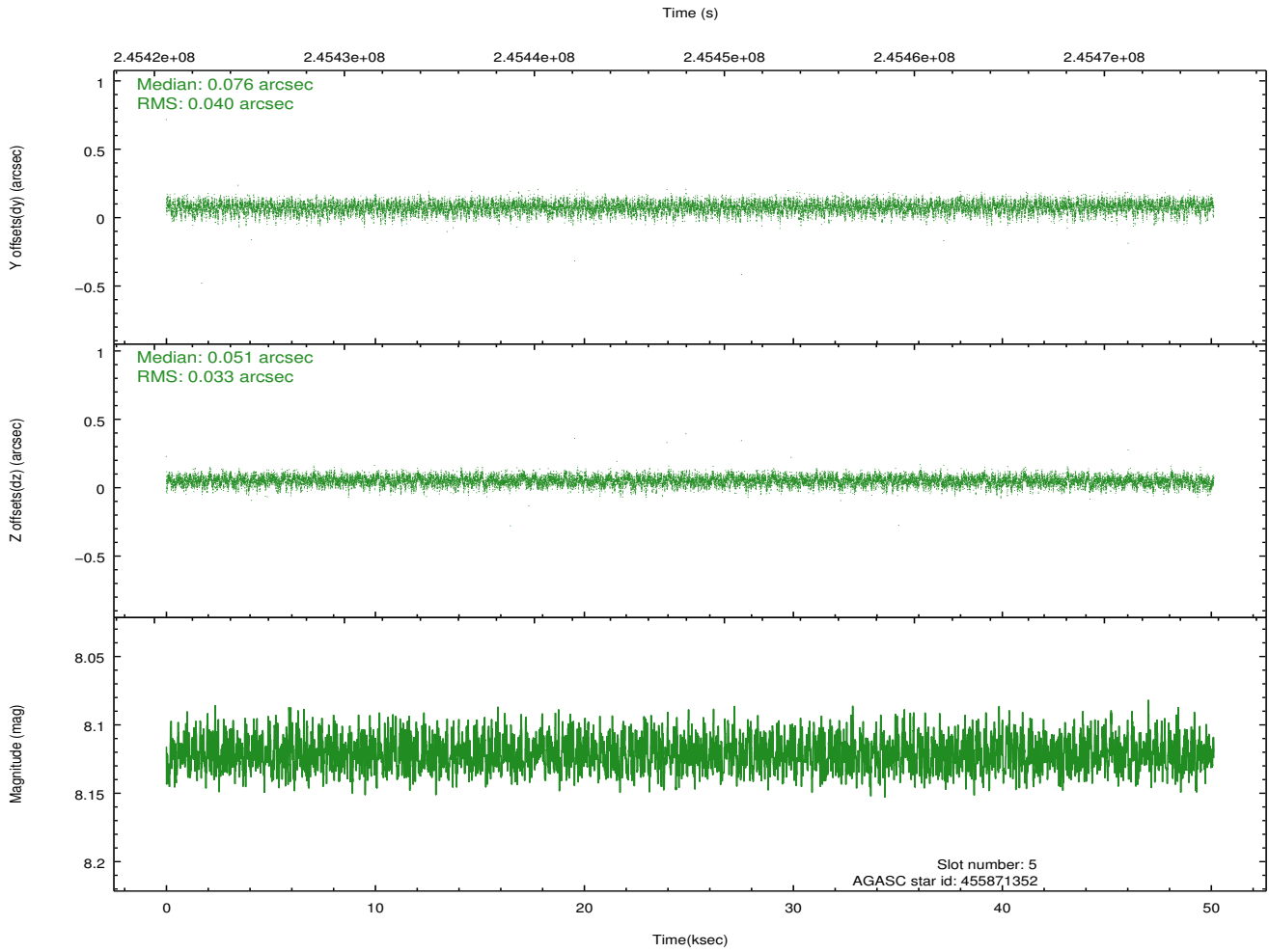
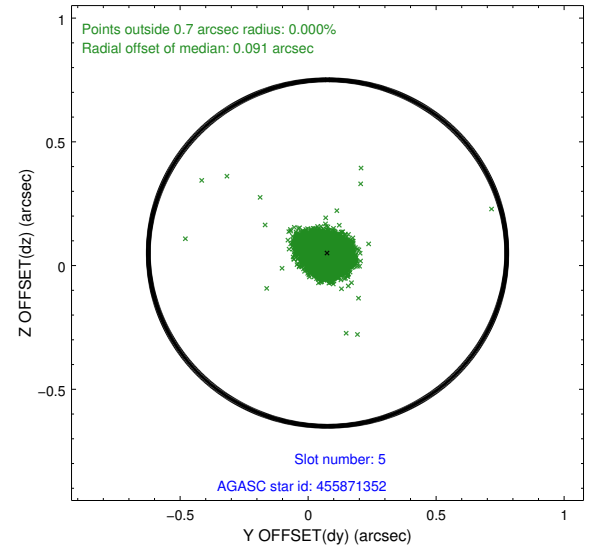
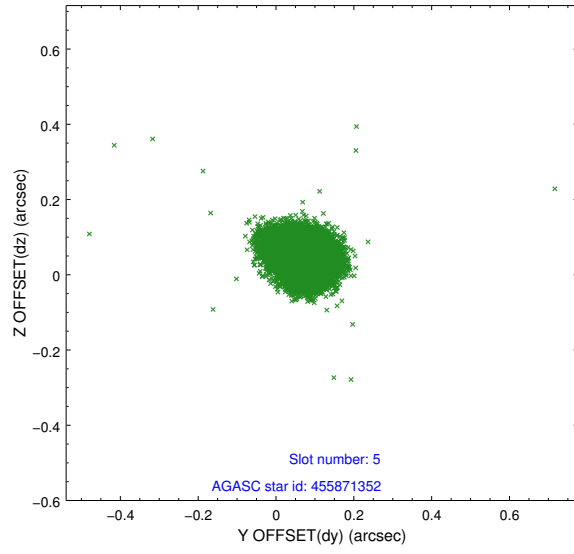
2.4.1 Slot 3



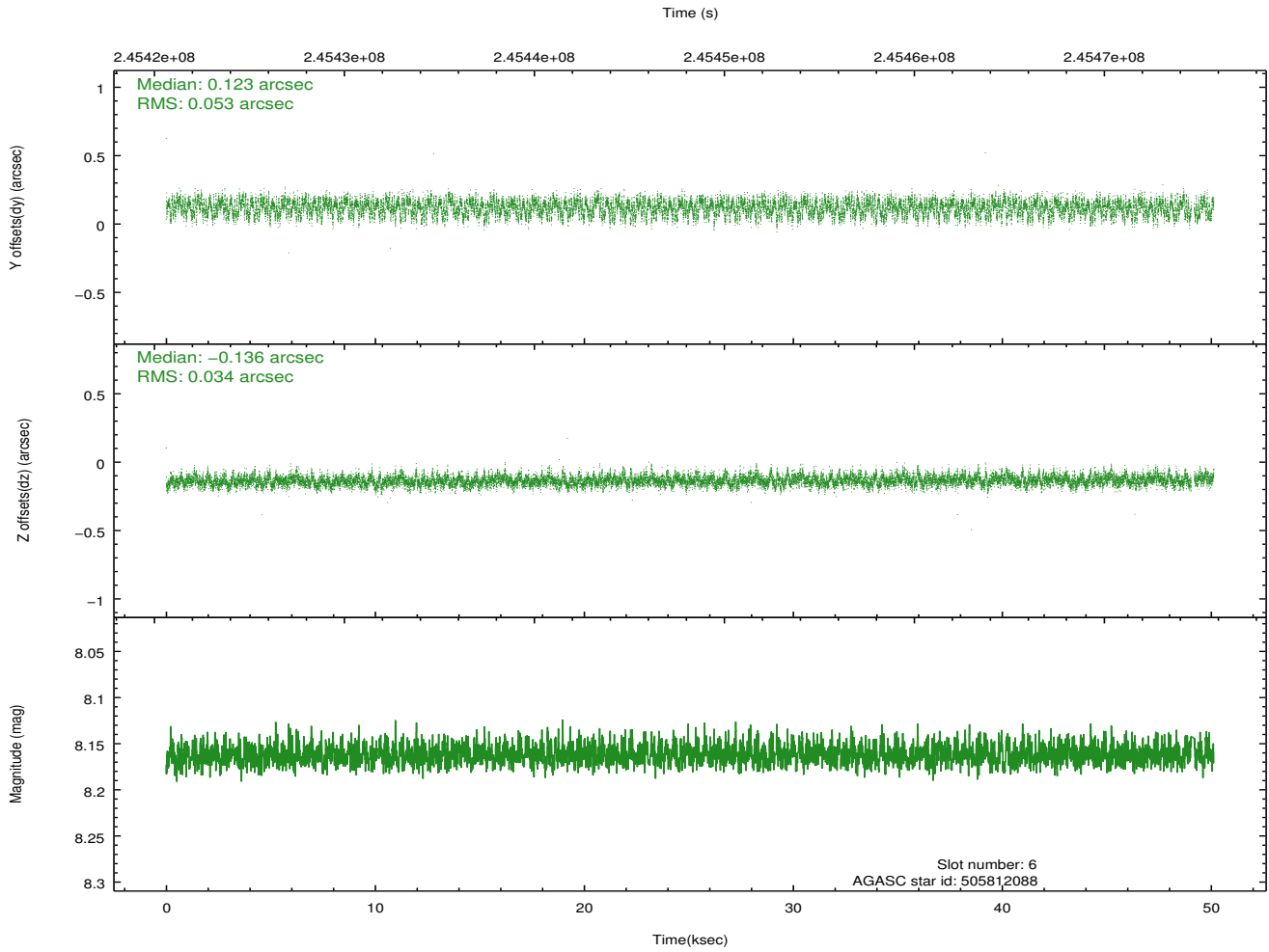
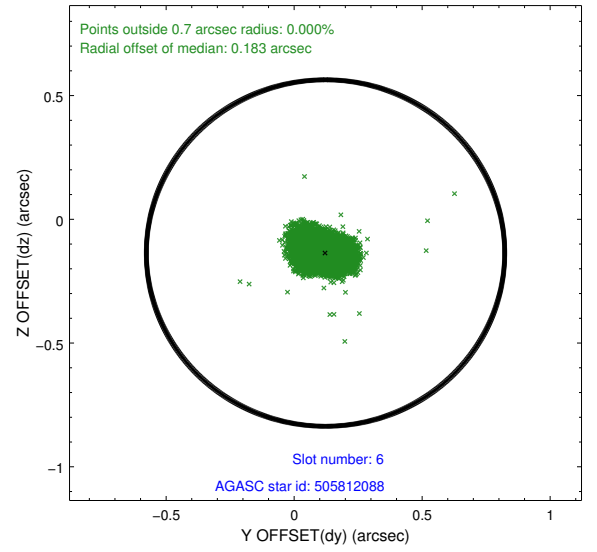
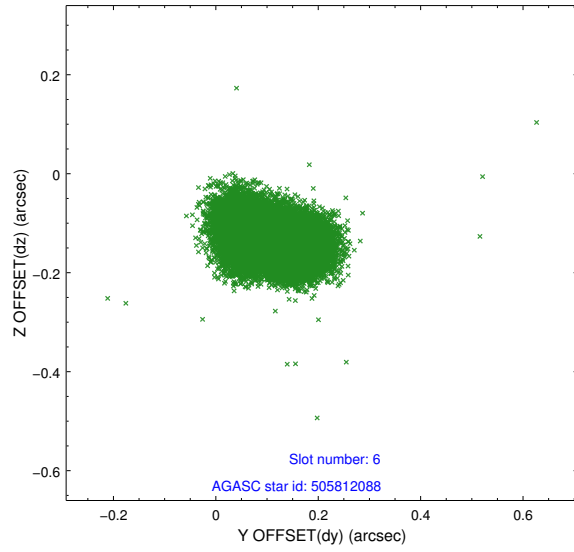
2.4.2 Slot 4



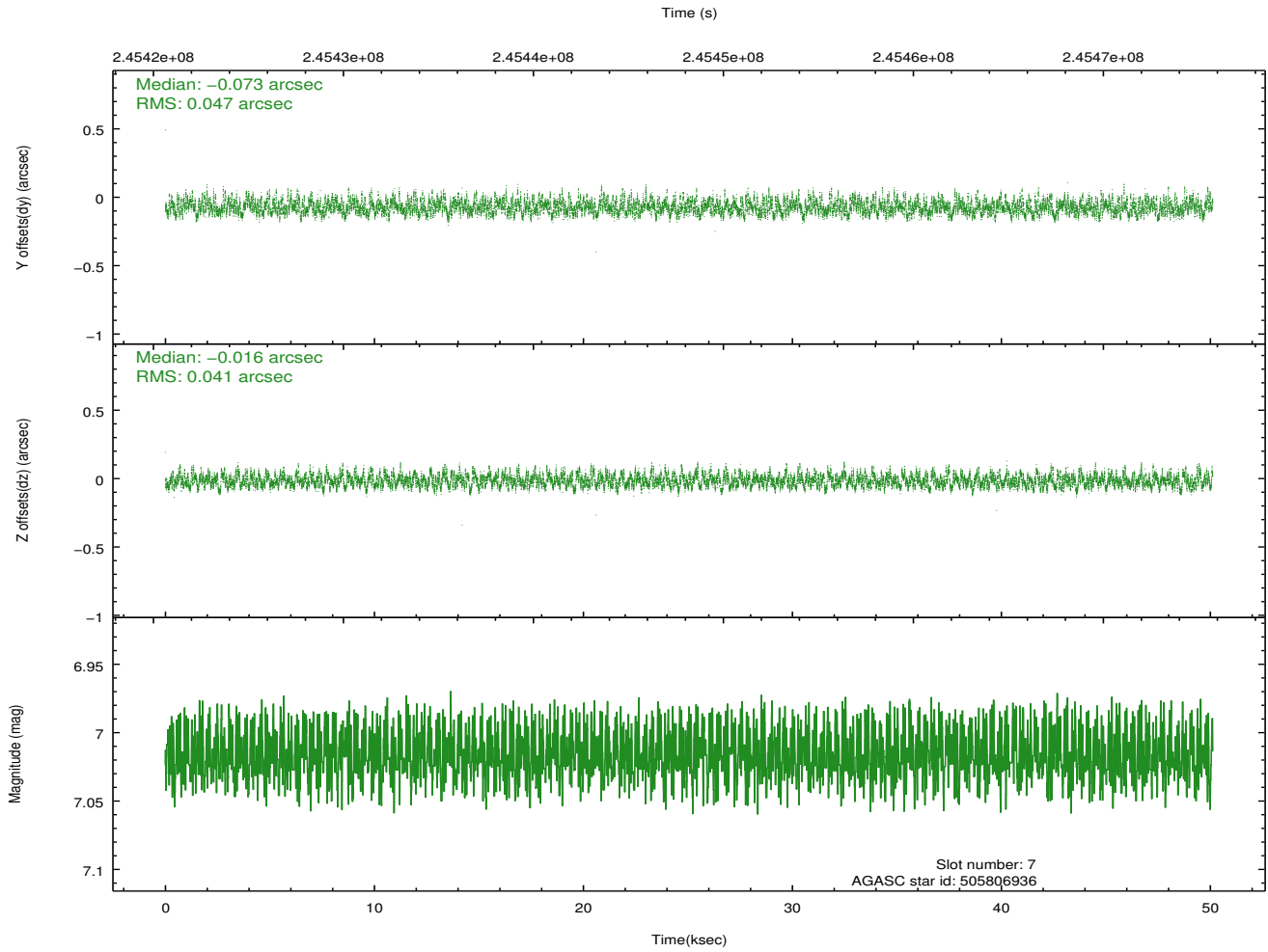
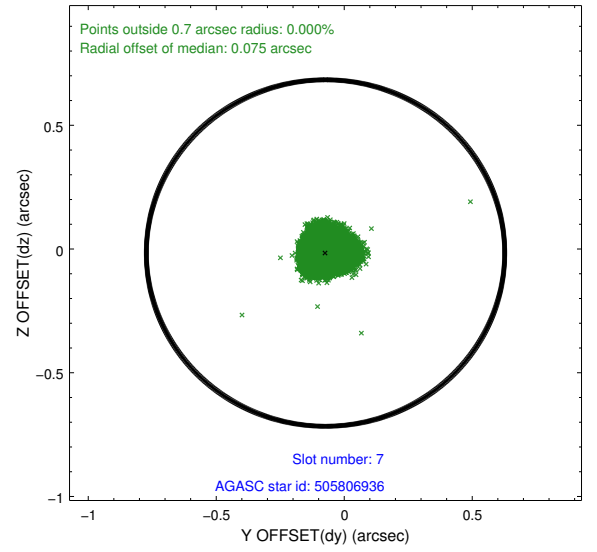
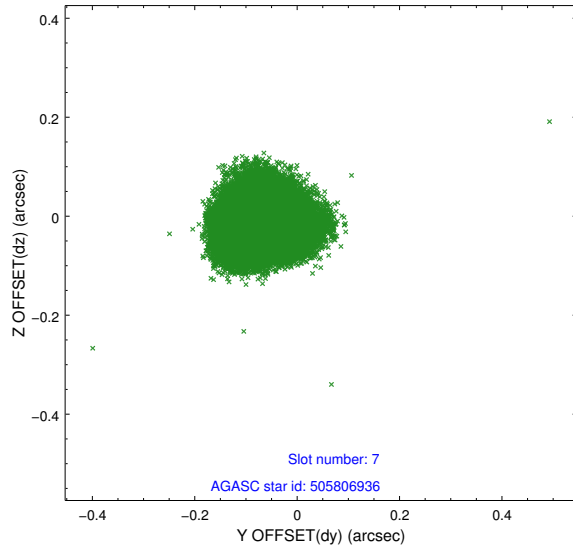
2.4.3 Slot 5



2.4.4 Slot 6

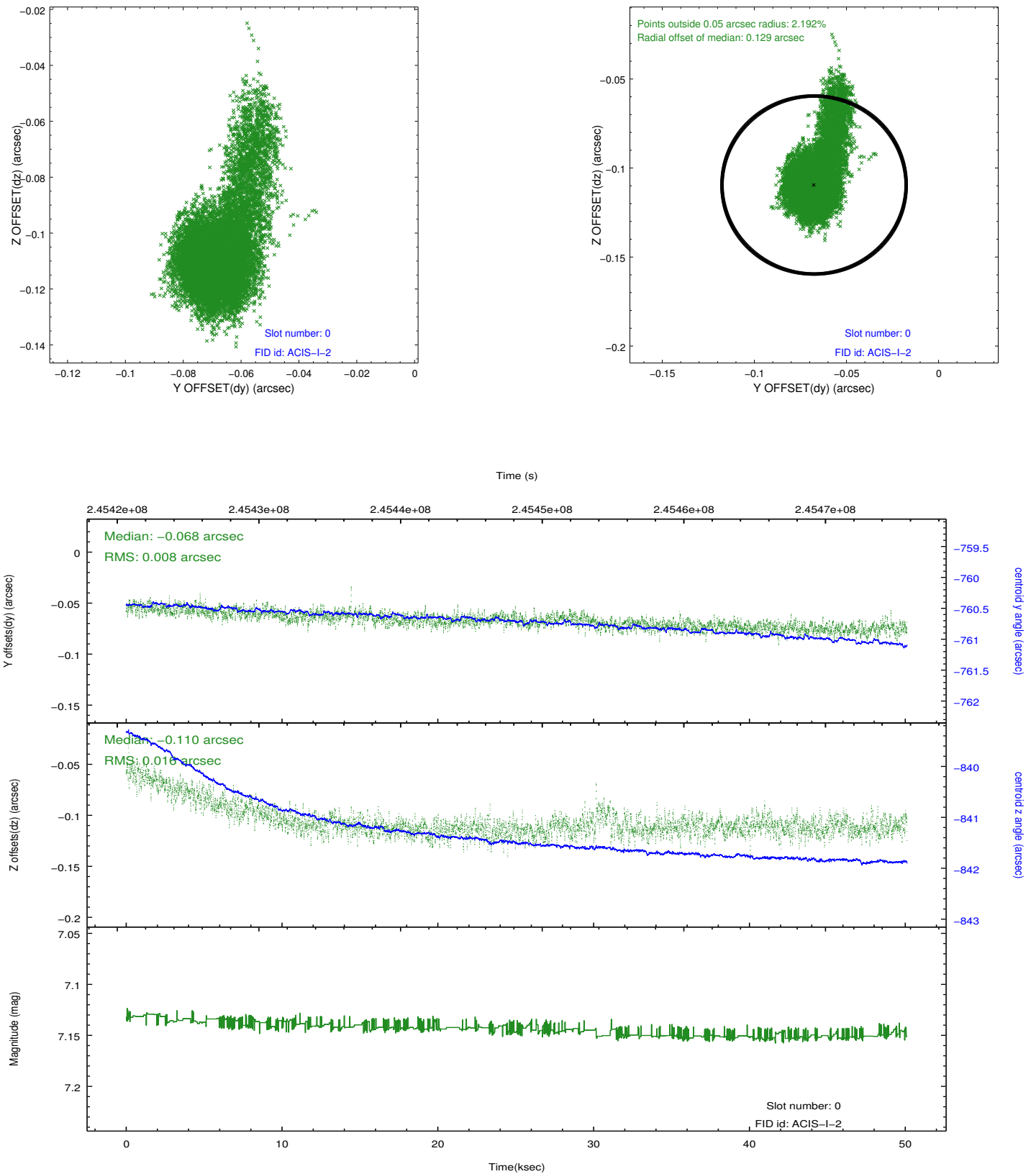


2.4.5 Slot 7

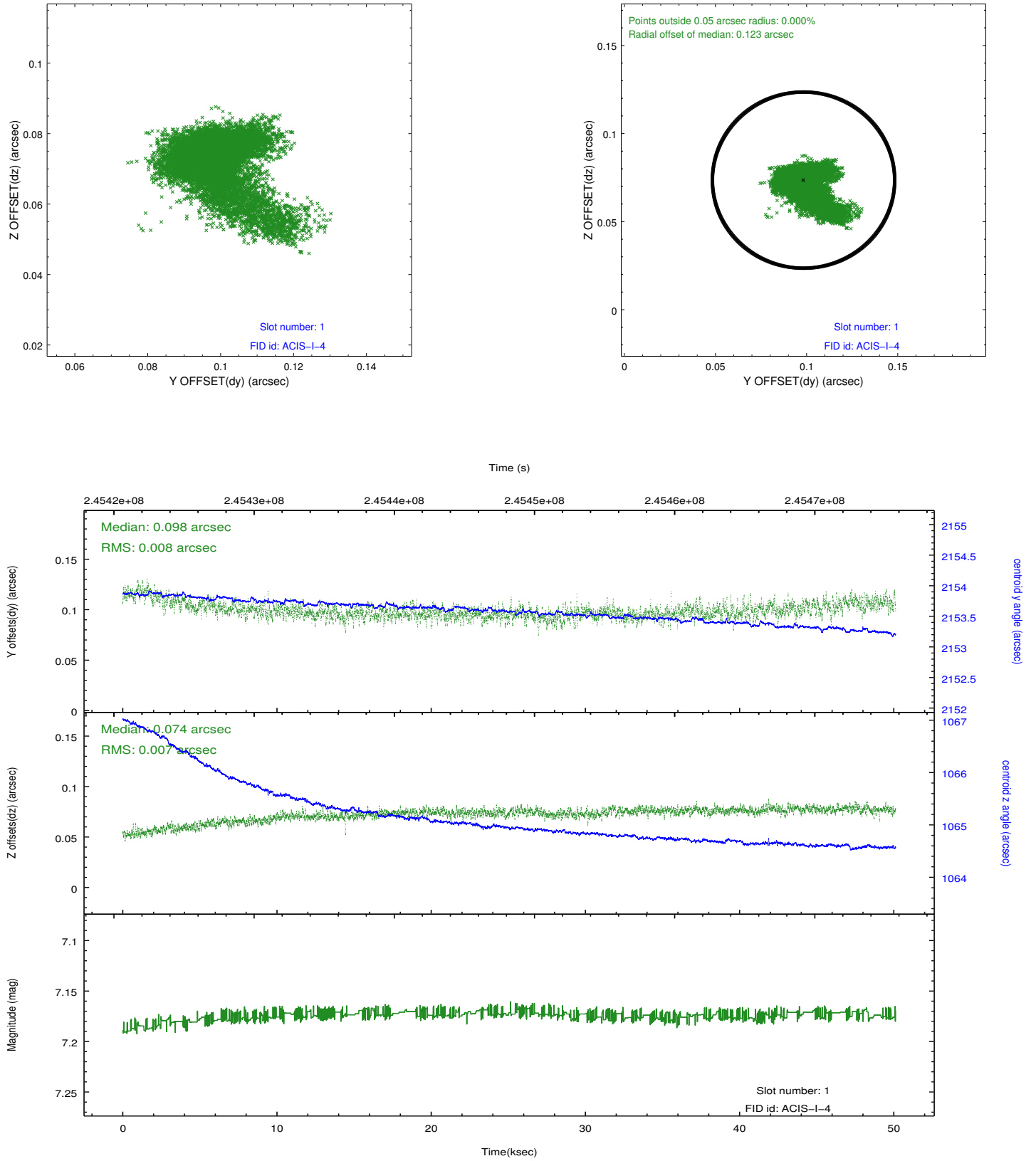


2.5 FID Slots

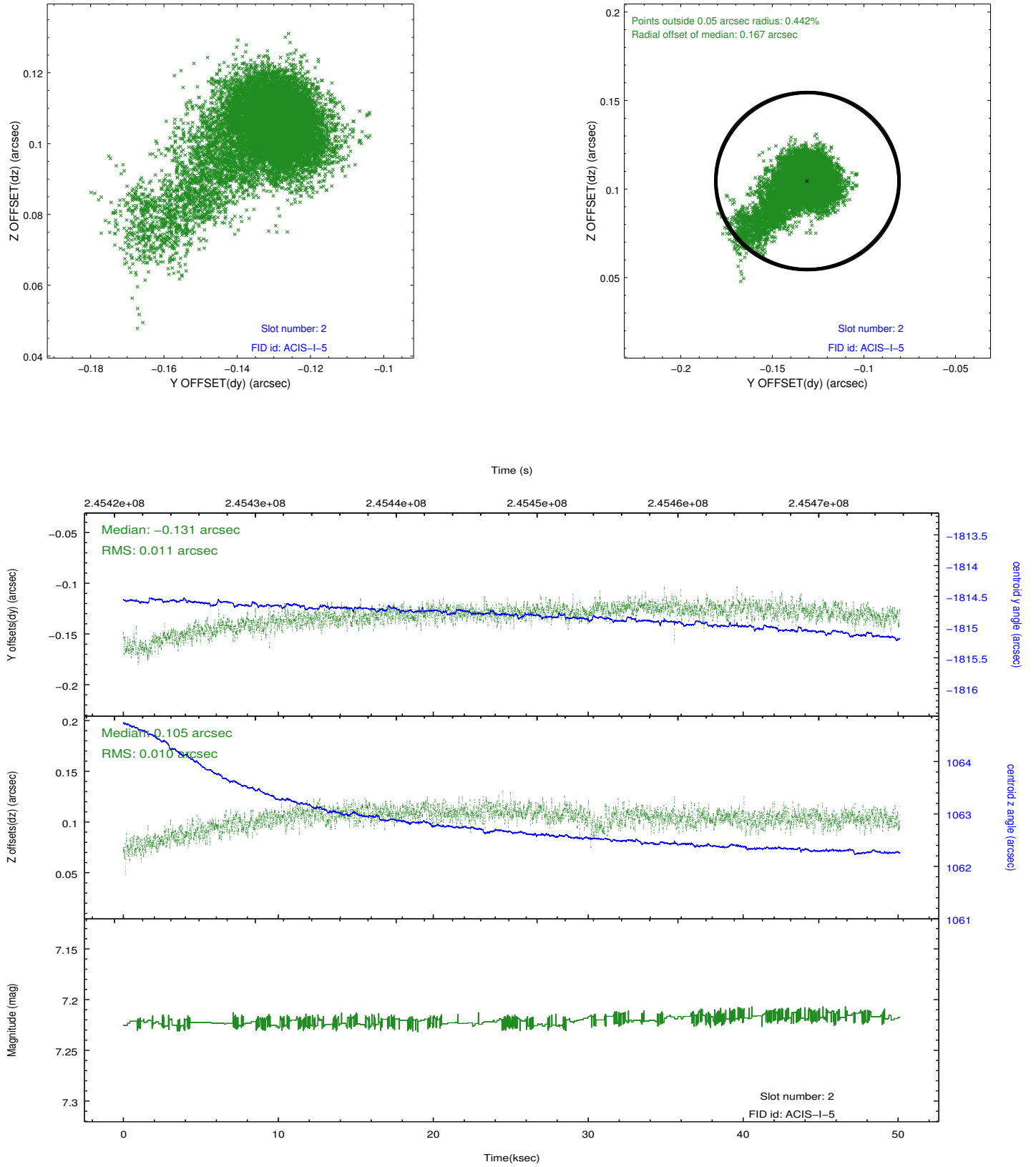
2.5.1 Slot 0



2.5.2 Slot 1



2.5.3 Slot 2



A Summary

A.1 Status

V&V Scientist	Jen Lauer
V&V Date (YYYY-MM-DD)	2013.03.08
V&V Edition	1
V&V Disposition and Status	OK
V&V Charge Time	50.11765

A.2 Comments

As a consequence of the DEA-A shutdown anomaly on Sep 15th (DOY258), the reported value of the ACIS FP temperature was ~1.3 degrees warmer than the actual temperature. The value for FP temperature reported in the headers of the Level 2 event file and the Mission Timeline files are incorrect by this amount for this processing. However, the temperature is corrected in the processing in order to obtain the correct temperature for the CTI correction. So the calibrated data are correct. If using the FP temp values in the headers of data files (some CIAO tools require this information), investigators should subtract 1.3 degrees from the reported temperature to determine the true temperature.

=====

Roll constraint satisfied.