

V&V Reference Report

L2 ASCDS Version : 7.6.7.1

Observation 5849 - L2 Version 002
Chandra X-Ray Center

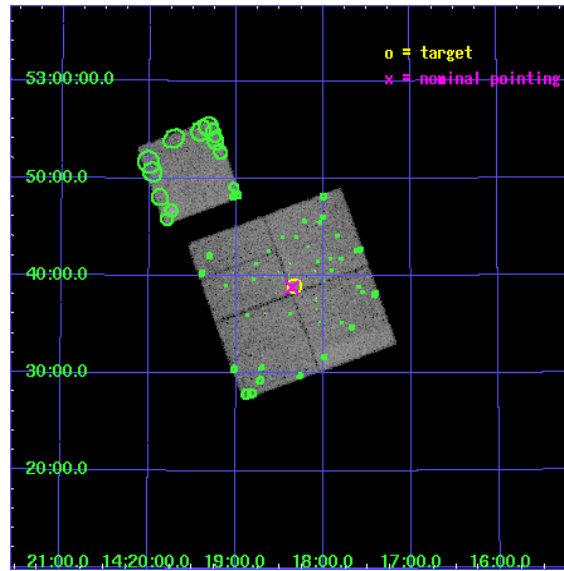
L2 Processing Date : Apr 1 2006

Contents

1	Front	2
2	OBI	3
2.1	OBI	3
2.1.1	Images	3
2.1.2	Bias	3
2.1.3	Parameters	4
2.1.4	Events	4
2.2	Compared Parameters	5
2.3	Aspect	6
2.4	Star Slots	9
2.4.1	Slot 3	9
2.4.2	Slot 4	10
2.4.3	Slot 5	11
2.4.4	Slot 6	12
2.4.5	Slot 7	13
2.5	FID Slots	14
2.5.1	Slot 0	14
2.5.2	Slot 1	15
2.5.3	Slot 2	16
3	Point Sources	17
A	Summary	18
A.1	Status	18
A.2	Comments	18

1 Front

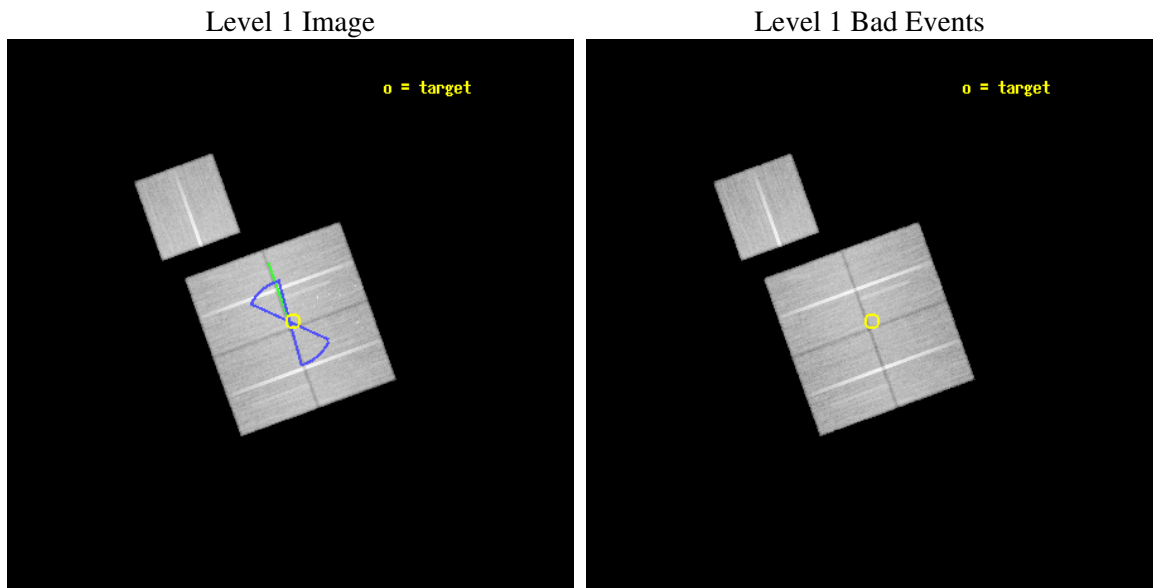
seq_num	900352
obs_id	5849
title	Deep Chandra Imaging of the Extended Groth Strip: The Co-evolution of Black Holes and Galaxies
observer	Professor Kirpal Nandra
object	EGS-5
dtcycle	0
cycle	P
ra_targ	214.584915
dec_targ	52.65052
ra_nom	214.59049151647
dec_nom	52.647370228174
roll_nom	340.10661265248
revision	2
ontime	50117.658943355
livetime	49462.834833176
ontime0	50114.517943174
ontime1	50117.658963263
ontime2	50114.517953217
ontime3	50117.658943355
ontime6	50114.517943233
l2events	133541



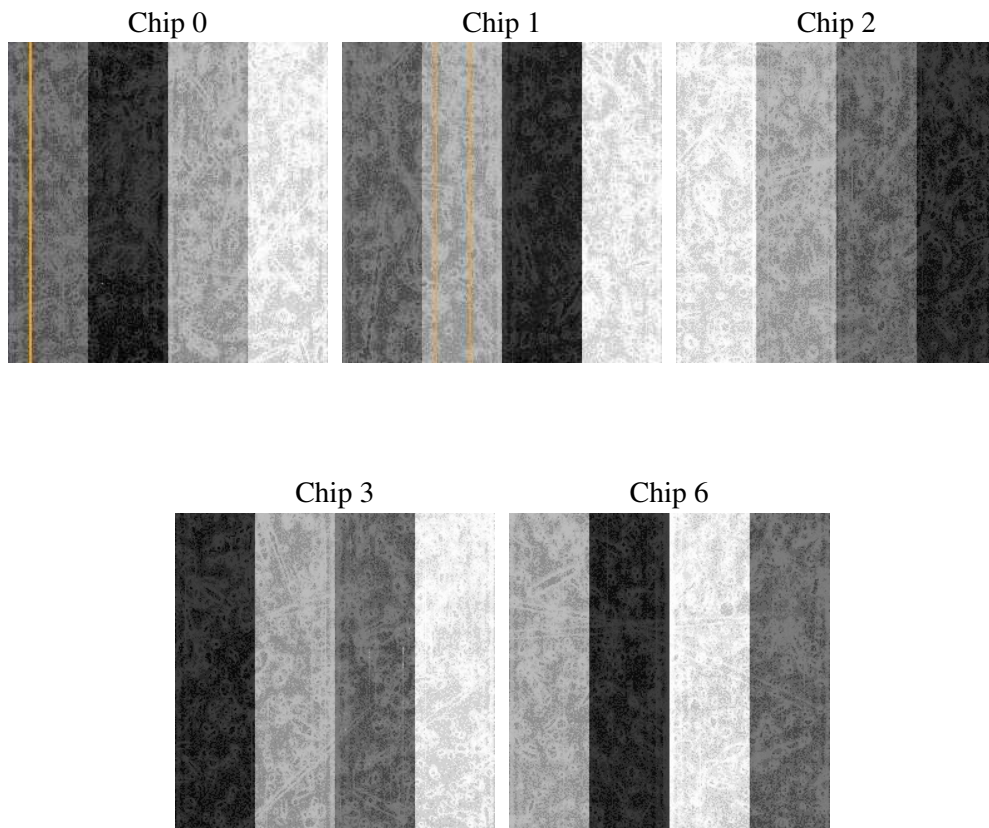
2 OBI

2.1 OBI

2.1.1 Images



2.1.2 Bias



2.1.3 Parameters

obi_num	0
ascdsver	7.6.7.1
caldbver	3.2.1
date	2006-04-01T01:58:10
revision	2

sched_exp_time	50000.000000
ontime	50576.429538459
ontime0	50573.288538277
ontime1	50576.429558367
ontime2	50573.288548321
ontime3	50576.429538459
ontime6	50573.288538337
l1events	1573328

2.1.4 Events

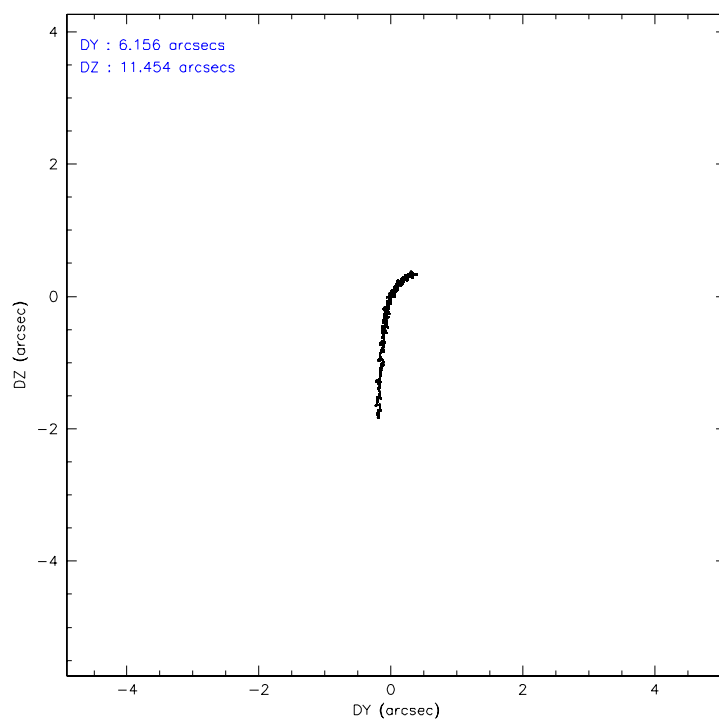
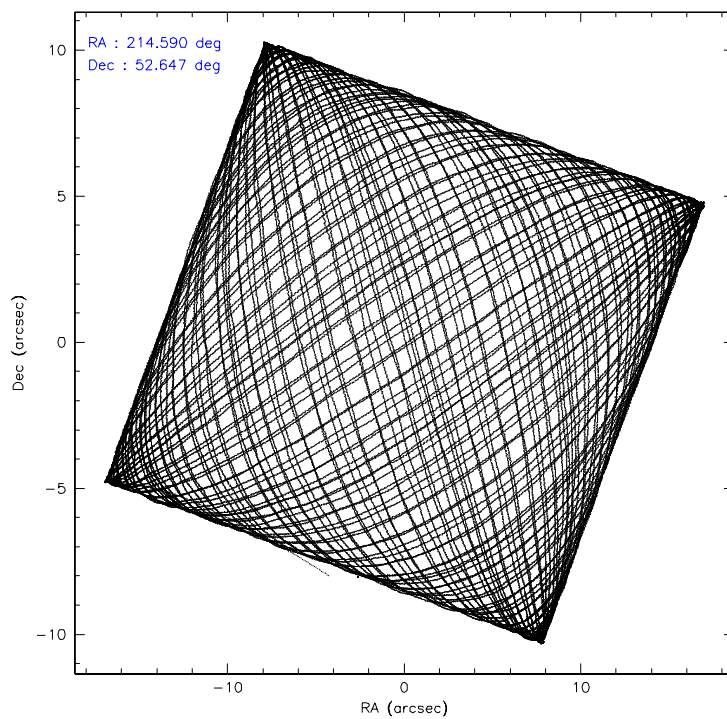
	ccd 0	ccd 1	ccd 2	ccd 3	ccd 6
level 1 events	303853	296932	338255	320305	313983
rejected events	272910	261132	307938	289282	282231
rejected %	89%	87%	91%	90%	89%

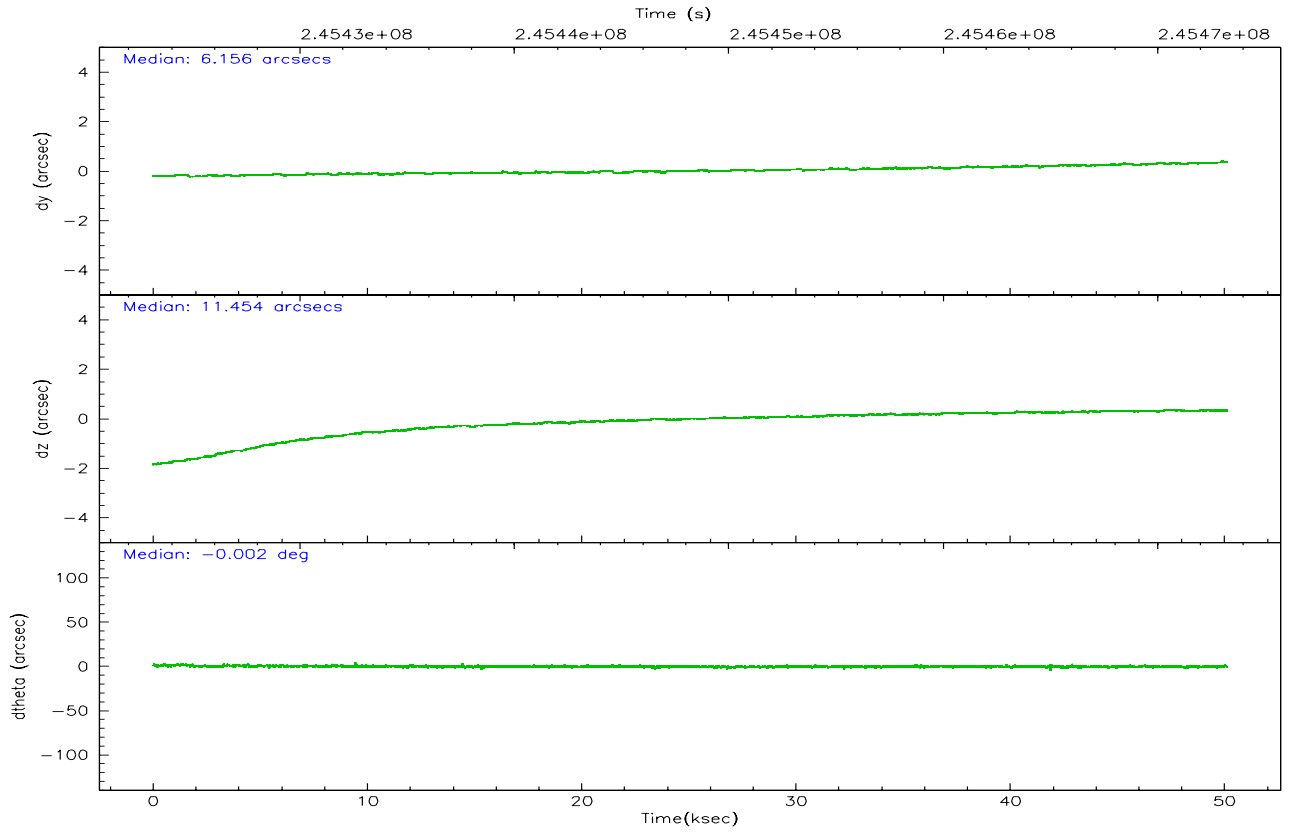
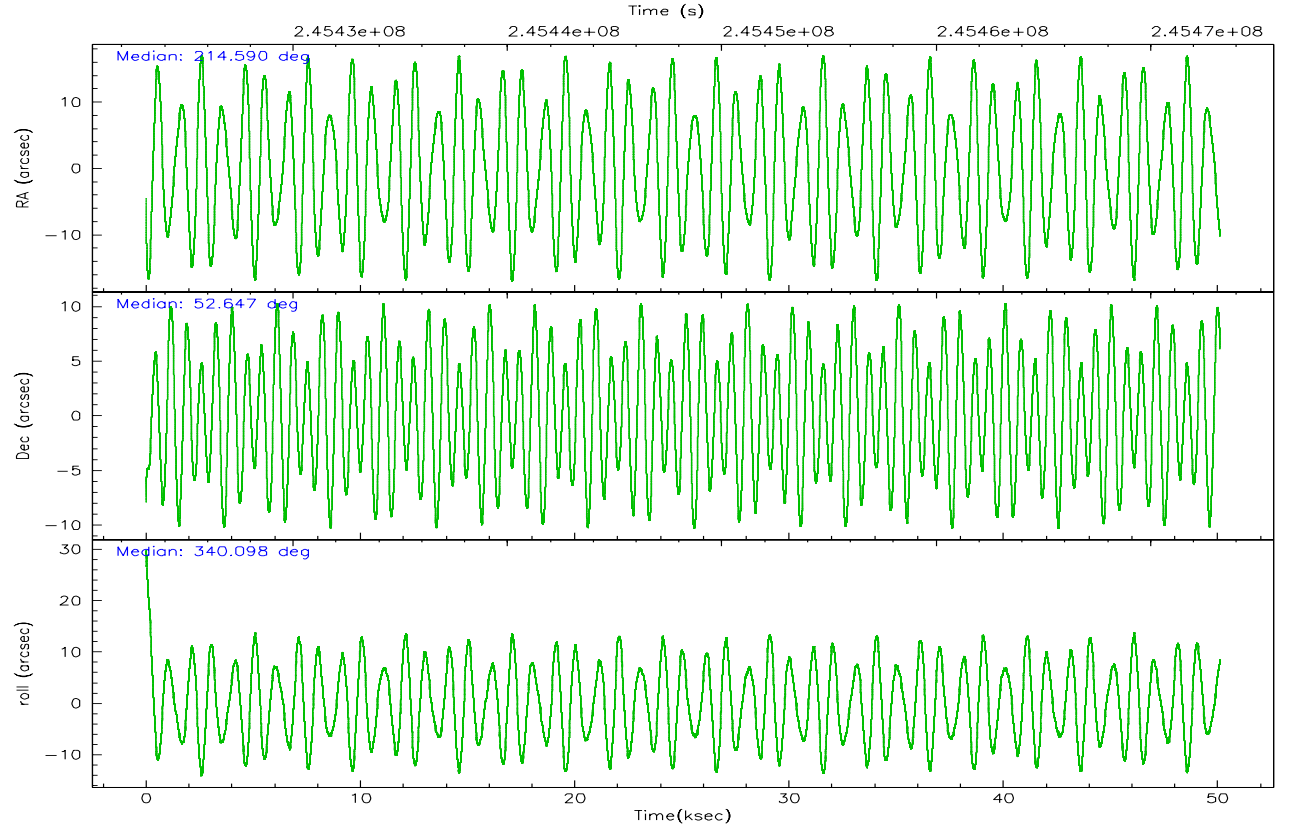
	ccd 0	ccd 1	ccd 2	ccd 3	ccd 6
grade 0 events	10623	13221	10827	11498	10927
	3%	4%	3%	3%	3%
grade 1 events	144	132	171	202	136
	0%	0%	0%	0%	0%
grade 2 events	7702	7963	7270	6741	6940
	2%	2%	2%	2%	2%
grade 3 events	3584	3928	3396	3531	3665
	1%	1%	1%	1%	1%
grade 4 events	3335	3983	3389	3574	3622
	1%	1%	1%	1%	1%
grade 5 events	10972	12298	10614	12831	12682
	3%	4%	3%	4%	4%
grade 6 events	6009	7071	5730	5935	6916
	1%	2%	1%	1%	2%
grade 7 events	261484	248336	296858	275993	269095
	86%	83%	87%	86%	85%

2.2 Compared Parameters

Parameter	Planned	Actual	Parameter	Planned	Actual
Instrument	ACIS	ACIS	Obspar format version number	6	6
Detector	ACIS-01236	ACIS-01236	Obspar file type	PREDICTED	ACTUAL
Grating	NONE	NONE	Obspar update status	NONE	UPDATED
Data mode	VFAINT	VFAINT	On-chip summing requested	N	N
Observation mode	POINTING	POINTING	Subarray requested	NONE	NONE
Pointing RA	214.546122	214.5904915164726	Alternating exposures requested	N	N
Pointing Dec	52.642446	52.64737022817388	Primary exposure time	0.000000	3.1
Pointing Roll	339.933196	340.106612652479			
Roll angle	50.756000	50.756000			
Roll tolerance	25.000000	25.000000			
Roll constraint allows 180D rotation	Y	Y			
SIM focus pos (mm)	-0.782348	-0.7809083437167272			
SIM defocus (mm)	0	0.001439871863259334			
SIM translation stage pos (mm)	-233.592463	-233.5874344608287			
SIM translation stage offset (mm)	0	-0.005018542100998502			
Observation start time	245423255.184000	245422063.92837			
Observation start date	2005-10-11T13:06:31	2005-10-11T12:47:43			
Observation end time	245473255.184000	245474199.01827			
Observation end date	2005-10-12T02:59:51	2005-10-12T03:16:39			
Read mode	TIMED	TIMED			

2.3 Aspect



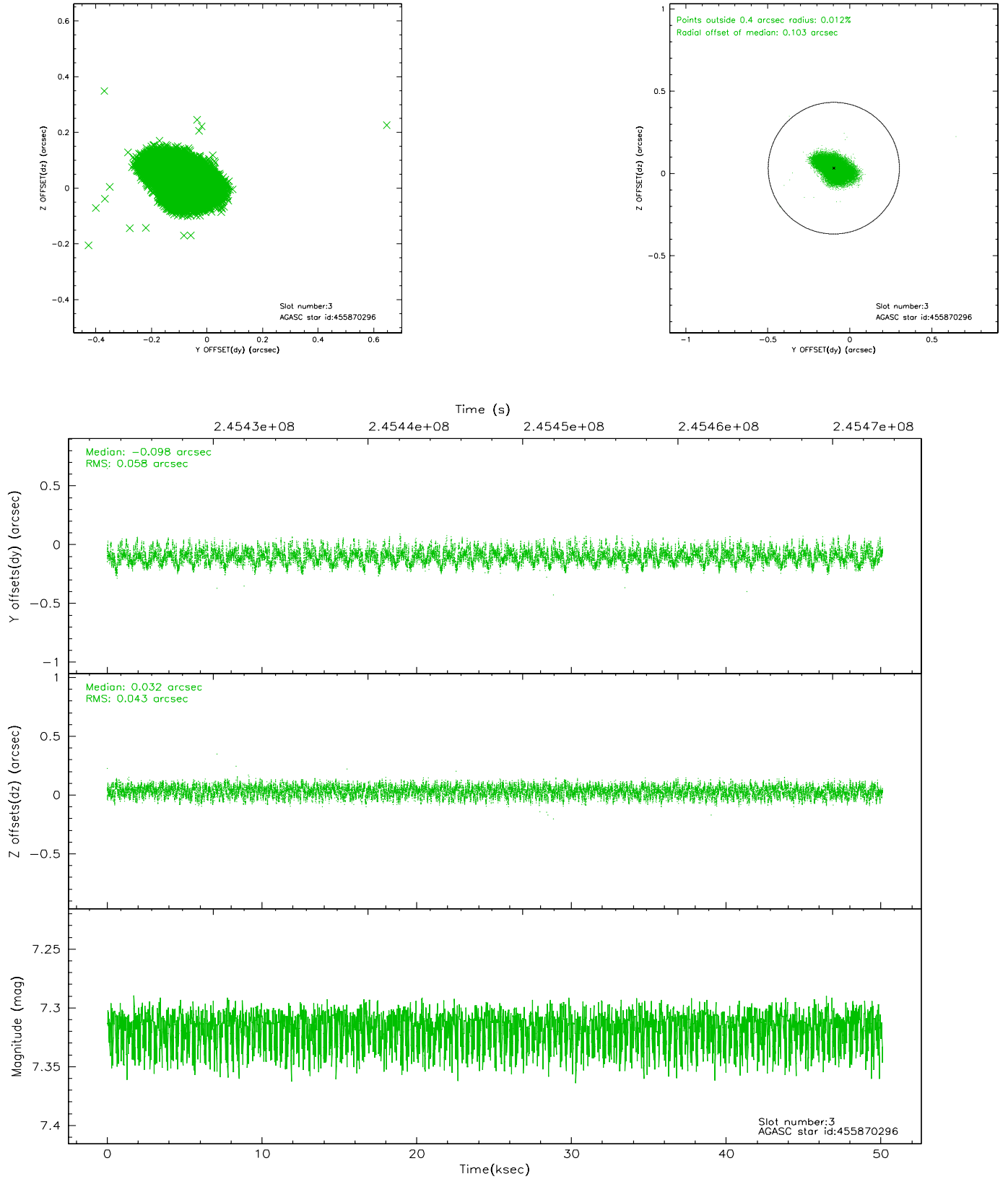


Slot Statistics

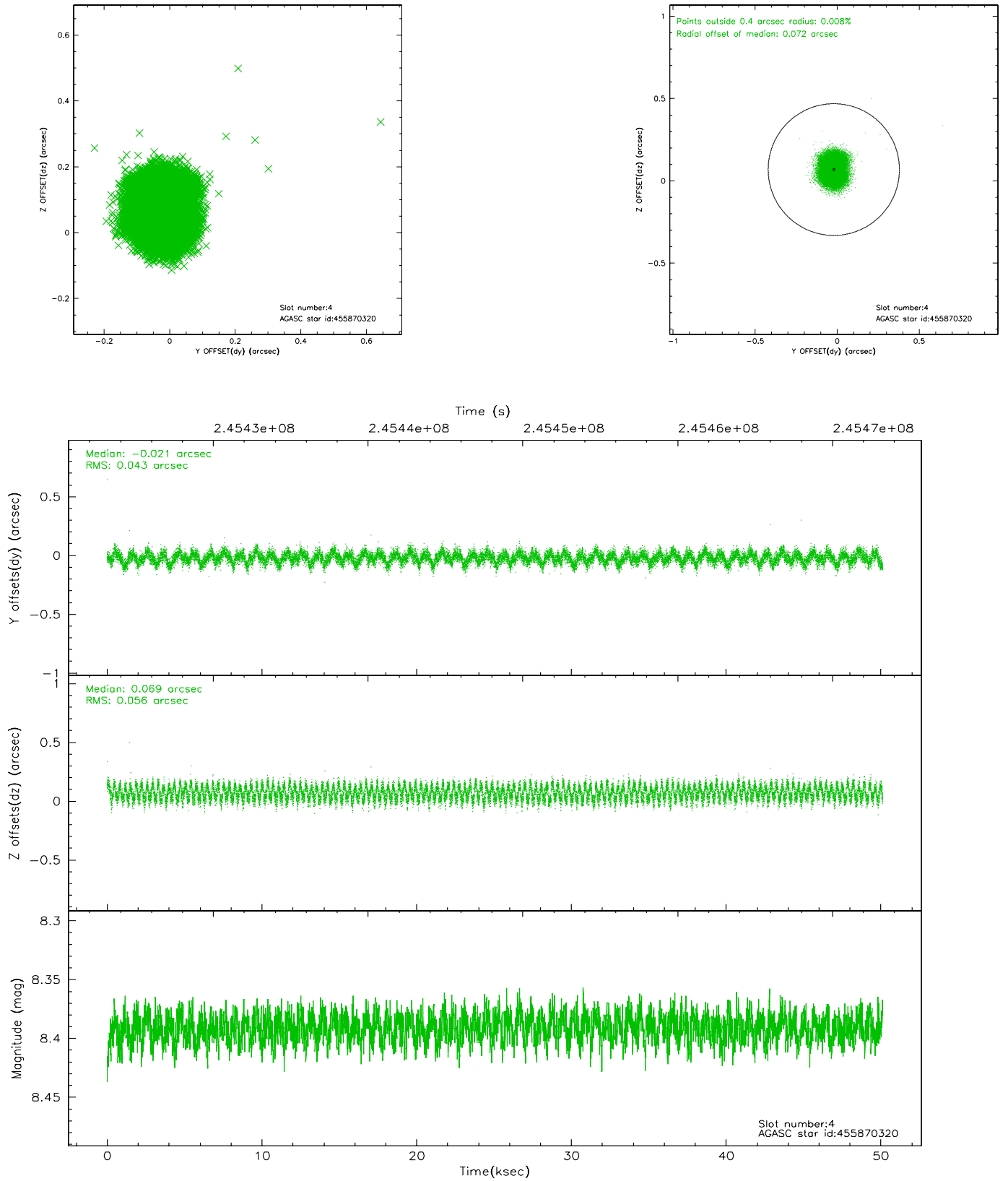
slot	status	id	mag	n_pts	med_dy	med_dz	dr1	dr2	ra	dec	mean_y	mean_z
0	FID	ACIS-I-2	7.14	12225	-0.056	-0.086	0.014	0.042	0.000000	0.000000	-760.71	-841.21
1	FID	ACIS-I-4	7.17	12225	0.056	0.062	0.009	0.021	0.000000	0.000000	2153.47	1065.11
2	FID	ACIS-I-5	7.22	12225	-0.100	0.093	0.012	0.035	0.000000	0.000000	-1814.61	1062.97
3	GUIDE	455870296	7.32	24451	-0.098	0.032	0.077	0.124	214.629779	52.033323	926.92	-1995.66
4	GUIDE	455870320	8.39	24442	-0.021	0.069	0.077	0.115	214.874440	52.401638	974.72	-565.00
5	GUIDE	455871352	8.12	24449	0.076	0.051	0.055	0.089	215.099961	52.172669	1727.82	-1164.08
6	GUIDE	505812088	8.16	24379	0.123	-0.136	0.067	0.110	214.186617	53.263562	-1494.86	1836.34
7	GUIDE	505806936	7.02	24448	-0.073	-0.016	0.068	0.102	213.820815	52.535927	-1362.67	-897.54

2.4 Star Slots

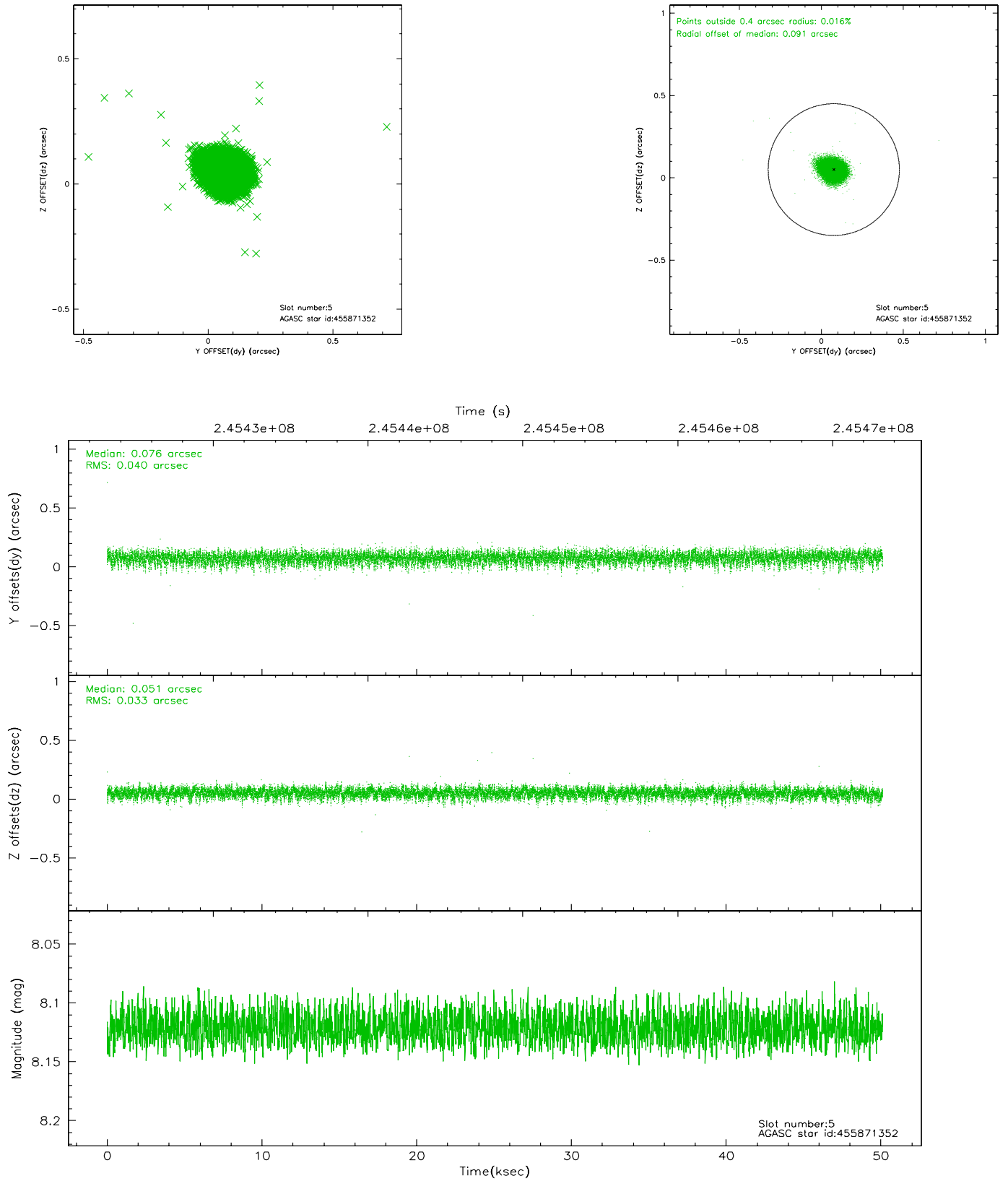
2.4.1 Slot 3



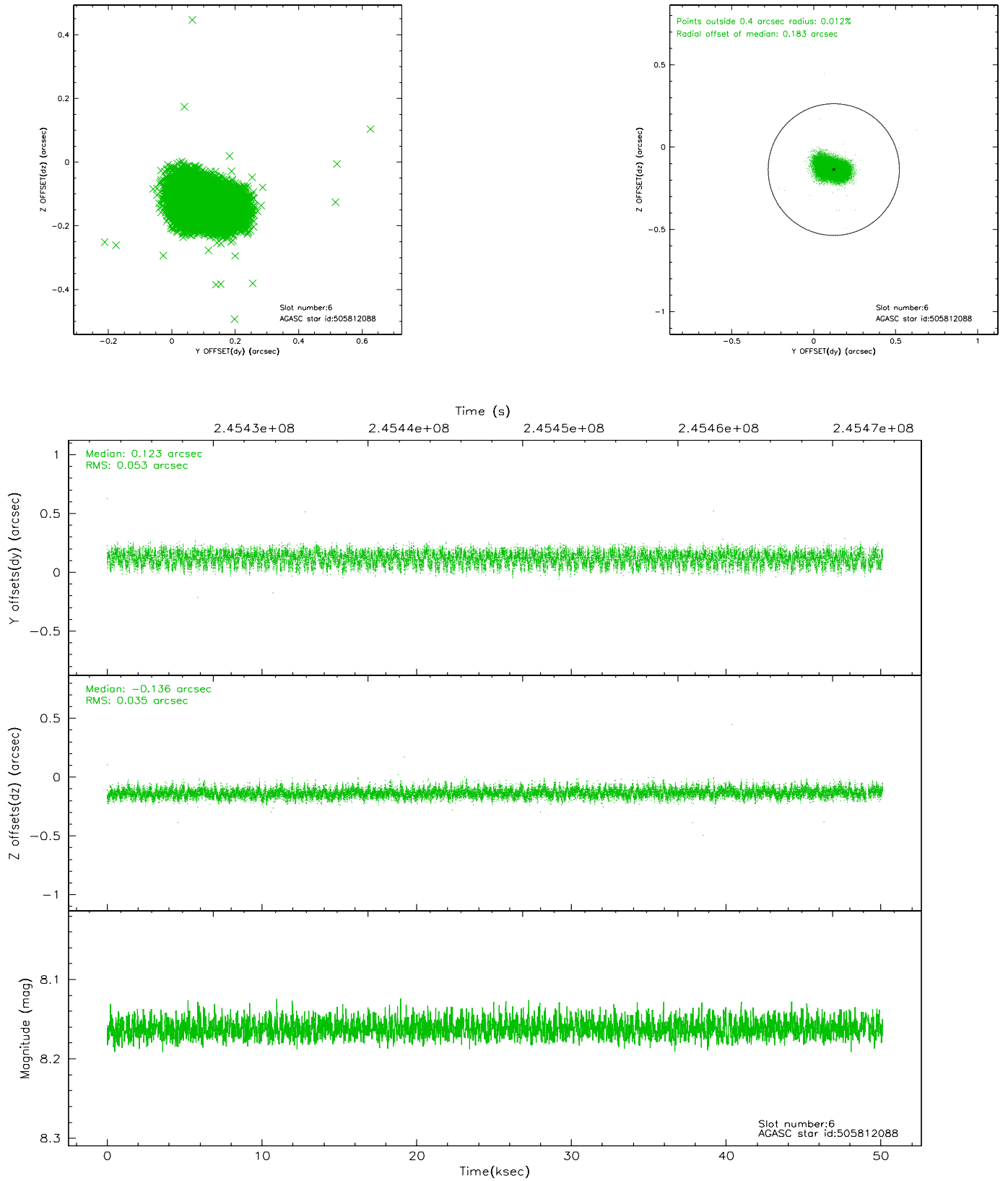
2.4.2 Slot 4



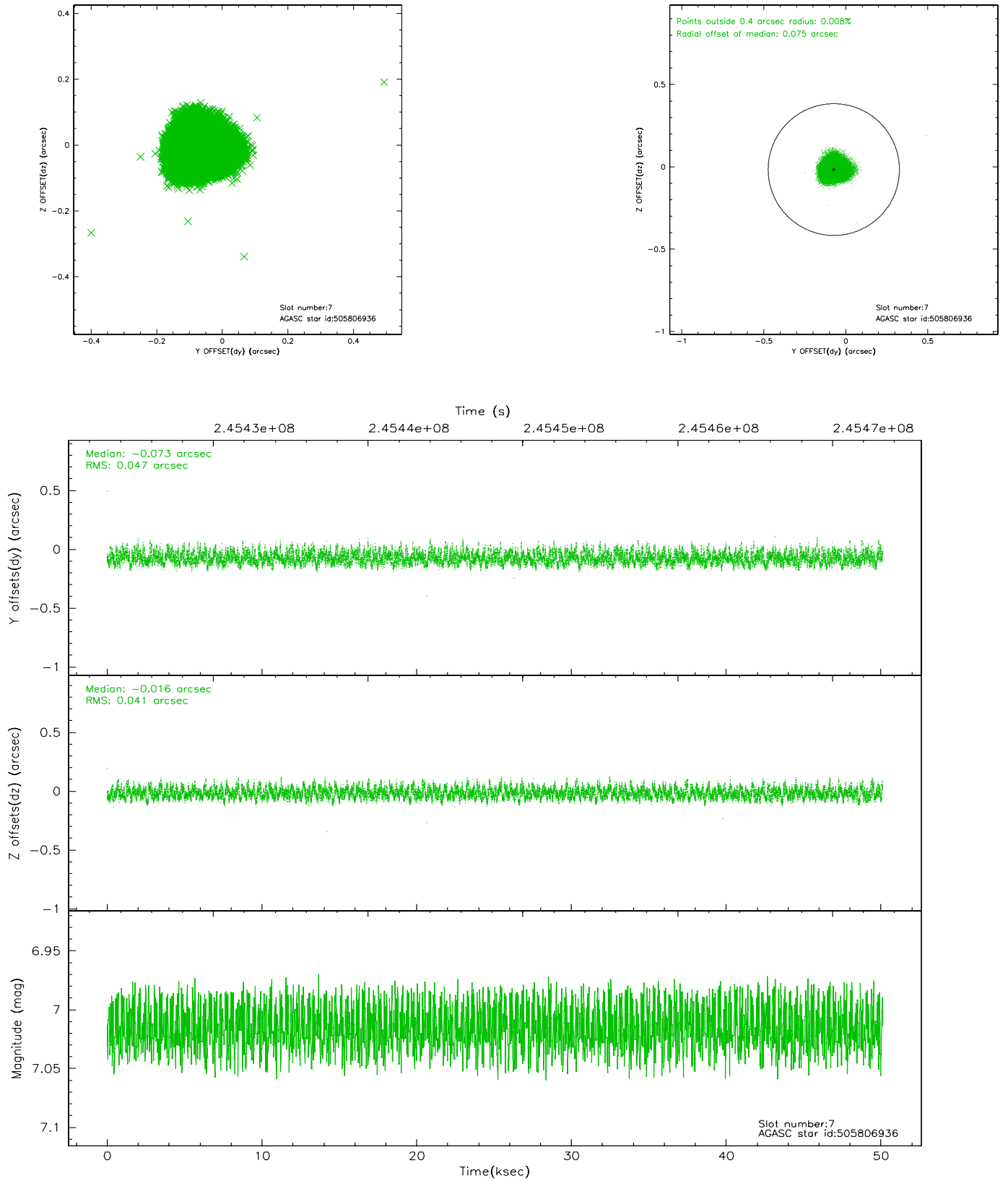
2.4.3 Slot 5



2.4.4 Slot 6

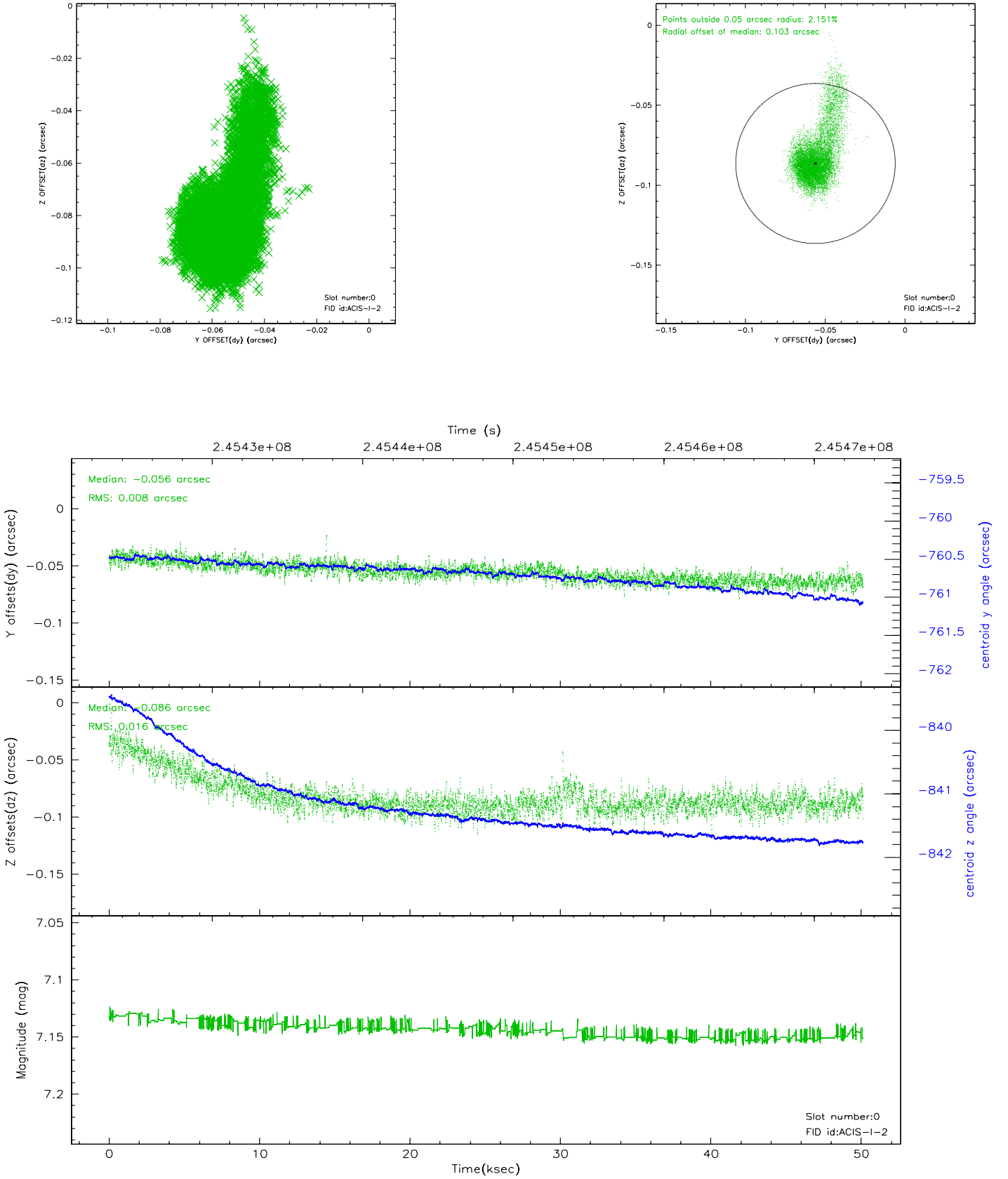


2.4.5 Slot 7

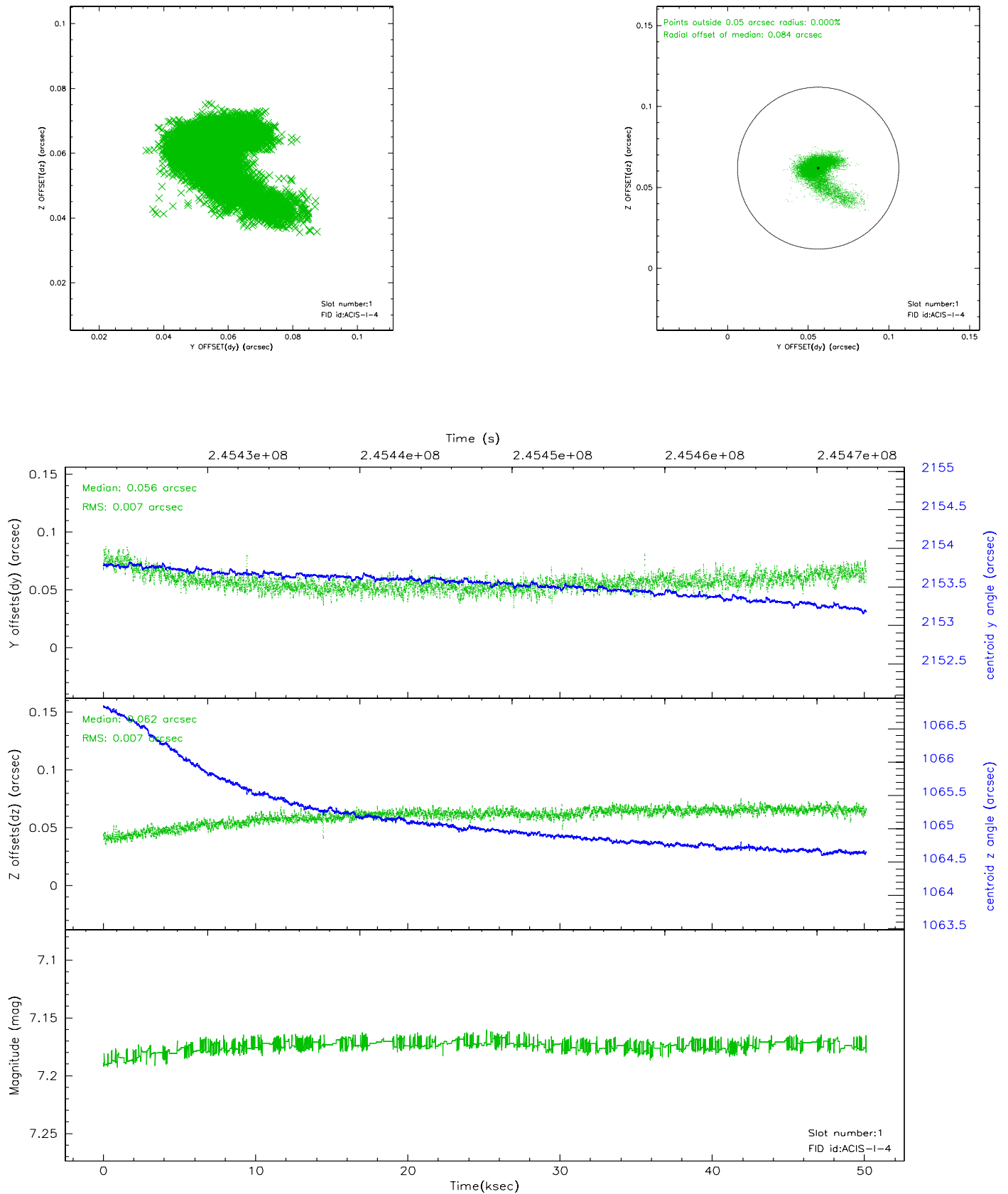


2.5 FID Slots

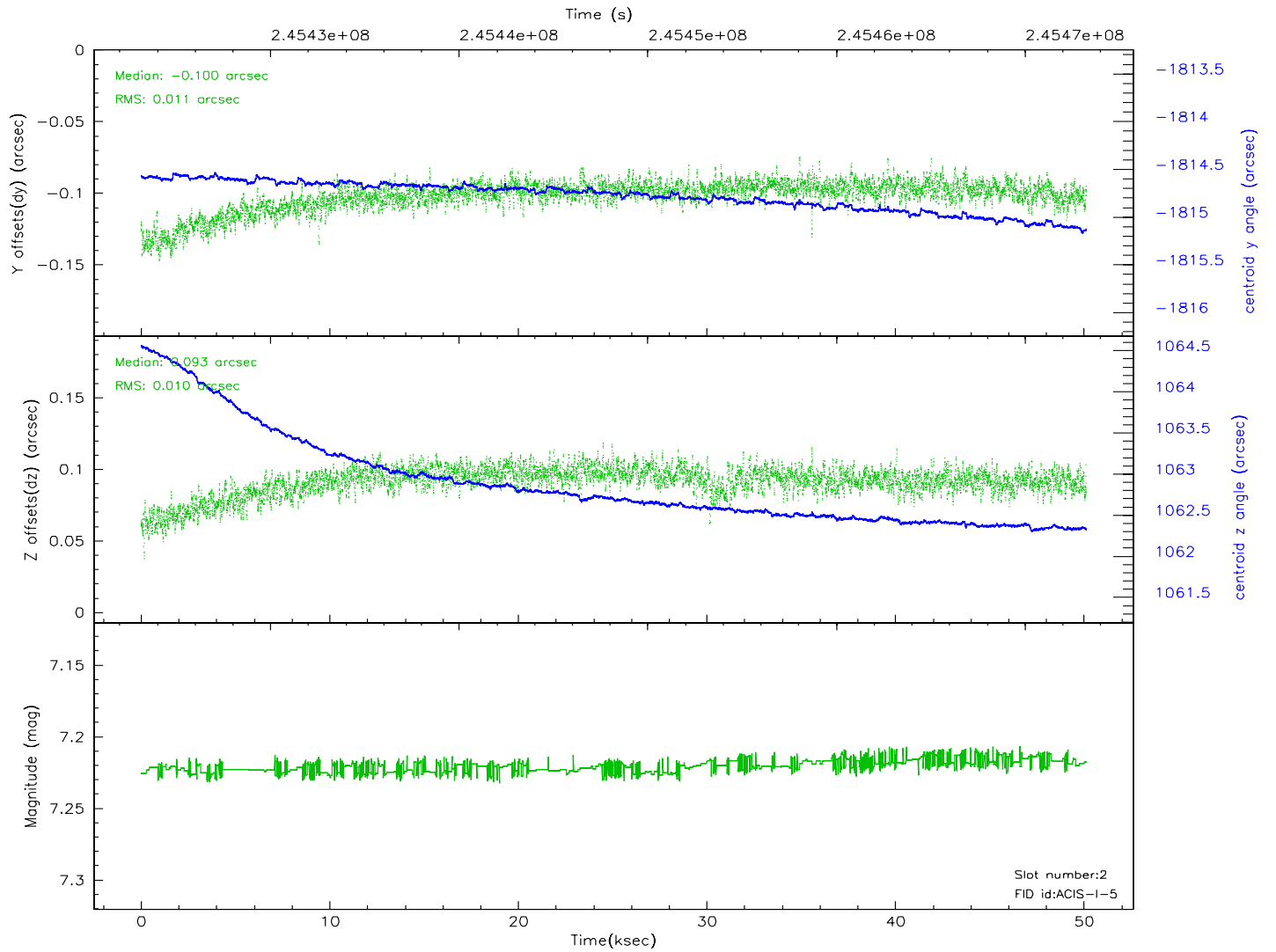
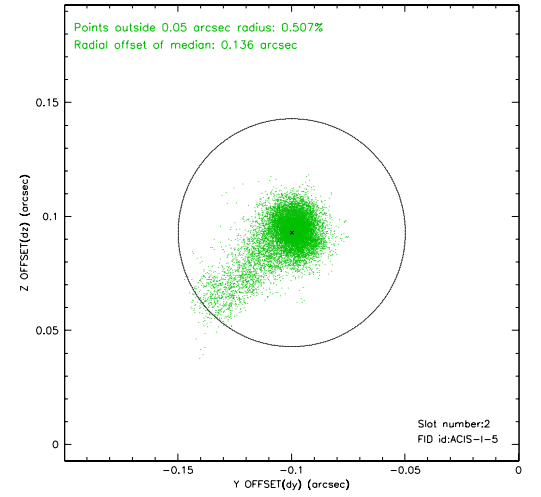
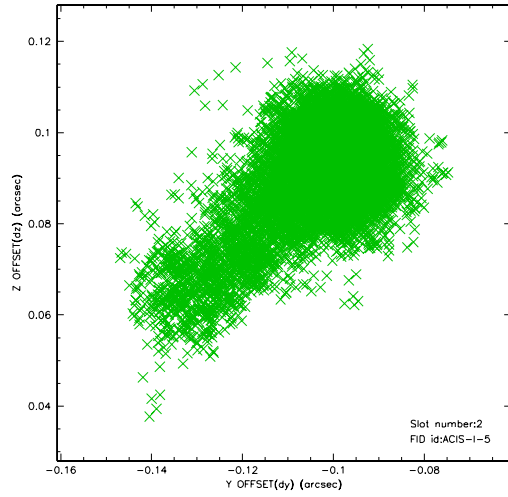
2.5.1 Slot 0



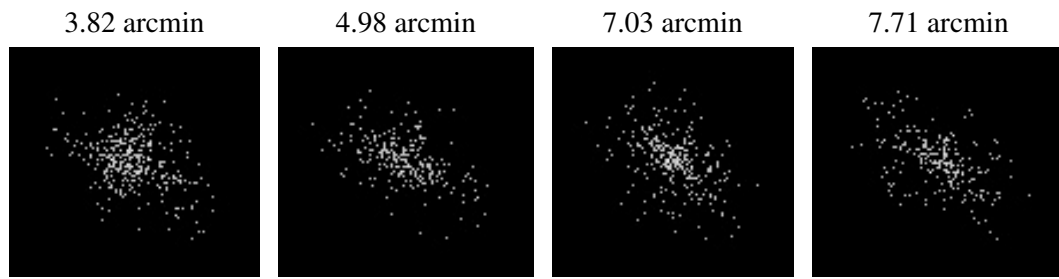
2.5.2 Slot 1



2.5.3 Slot 2



3 Point Sources



A Summary

A.1 Status

V&V Scientist	Beth Sundheim
V&V Date (YYYY-MM-DD)	2006.04.03
V&V Edition	1
V&V Disposition and Status	OK
V&V Charge Time	50.11765

A.2 Comments

Roll constraint satisfied.

Focal plane temperature is elevated during initial ~8 ksec of observation.