

# V&V Reference Report

## L2 ASCDS Version : 8.4.4

Observation 58469 - L2 Version 2  
Chandra X-Ray Center

L2 Processing Date : Apr 22 2012

## Contents

<b>1</b>	<b>Front</b>	<b>2</b>
<b>2</b>	<b>OBI</b>	<b>3</b>
2.1	OBI . . . . .	3
2.1.1	Images . . . . .	3
2.1.2	Bias . . . . .	3
2.1.3	Parameters . . . . .	4
2.1.4	Events . . . . .	4
2.2	Compared Parameters . . . . .	5
2.3	Star Slots . . . . .	6
2.4	FID Slots . . . . .	6
<b>A</b>	<b>Summary</b>	<b>7</b>
A.1	Status . . . . .	7
A.2	Comments . . . . .	7

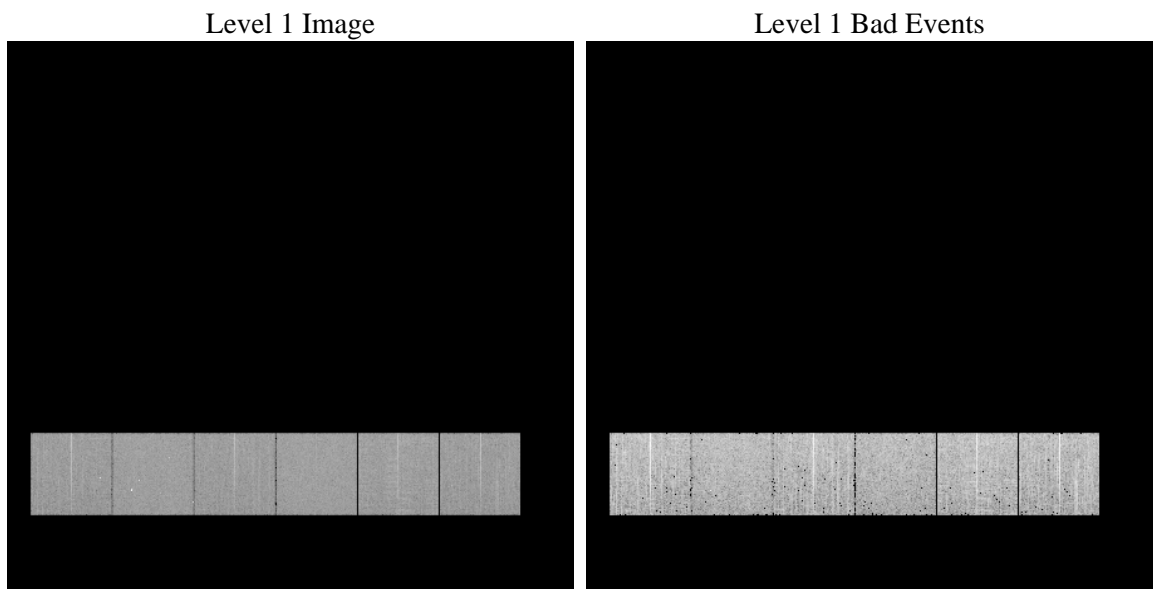
# 1 Front

seq_num	&#160	Sequence number
obs_id	58469	Observation id
title	ACIS-456789 diagnostics	Proposal title
observer	CHANDRA engineering request/realtime commanding	Principal investig
object	&#160	Source name
dtcycle	0	&#160
cycle	P	events from which exps? Prim/Second/Both
ra_targ	0.0	Observer's specified target RA [deg]
dec_targ	0.0	Observer's specified target Dec [deg]
ra_nom	178.97537285534	Nominal RA [deg]
dec_nom	26.981478221475	Nominal Dec [deg]
roll_nom	187.26380309142	Nominal Roll [deg]
revision	2	Processing version of data
ontime	4082.4639755487	Sum of GTIs [s]
livetime	4030.7693585257	Livetime [s]
ontime4	4082.3408555388	Sum of GTIs [s]
ontime5	4082.4229355454	Sum of GTIs [s]
ontime6	4082.3818955421	Sum of GTIs [s]
ontime7	4082.4639755487	Sum of GTIs [s]
ontime8	4082.2998155355	Sum of GTIs [s]
ontime9	4079.2640252113	Sum of GTIs [s]
l2events	395253	Number of level 2 events

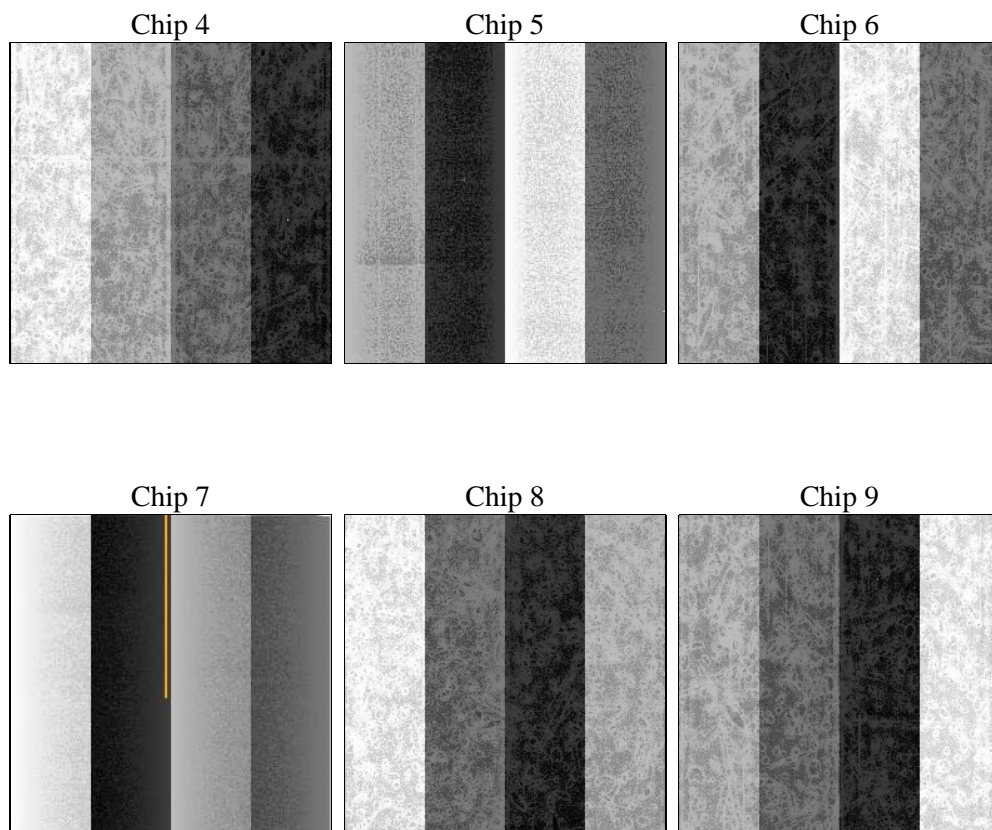
## 2 OBI

### 2.1 OBI

#### 2.1.1 Images



#### 2.1.2 Bias



### 2.1.3 Parameters

obi_num	0	Obi number	sched_exp_time	0.0	[s] Scheduled observation exposure time
ascdsver	8.4.4	Processing system revision	ontime	4082.4639755487	Sum of GTIs [s]
caldsver	4.4.9	&#160	ontime4	4082.3408555388	Sum of GTIs [s]
date	2012-04-22T05:06:26	Date and time of file creation	ontime5	4082.4229355454	Sum of GTIs [s]
revision	2	Processing version of data	ontime6	4082.3818955421	Sum of GTIs [s]
			ontime7	4082.4639755487	Sum of GTIs [s]
			ontime8	4082.2998155355	Sum of GTIs [s]
			ontime9	4079.2640252113	Sum of GTIs [s]
			l1events	650696	Number of level 1 events

### 2.1.4 Events

	ccd 4	ccd 5	ccd 6	ccd 7	ccd 8	ccd 9		ccd 4	ccd 5	ccd 6	ccd 7	ccd 8	ccd 9
level 1 events	102959	112329	104413	113417	113671	103907	grade 0 events	35921	14663	35509	17757	37696	34924
rejected events	40367	33929	37751	31643	40907	39410		34%	13%	34%	15%	33%	33%
rejected %	39%	30%	36%	27%	35%	37%	grade 1 events	328	192	214	64	234	228
								0%	0%	0%	0%	0%	0%
							grade 2 events	9796	28039	11754	17672	13195	11102
								9%	24%	11%	15%	11%	10%
							grade 3 events	4343	4098	4313	7858	5091	4183
								4%	3%	4%	6%	4%	4%
							grade 4 events	4190	4085	4160	7854	4955	4146
								4%	3%	3%	6%	4%	3%
							grade 5 events	2059	5007	2212	5279	2766	2393
								1%	4%	2%	4%	2%	2%
							grade 6 events	8342	27515	10926	30633	11827	10142
								8%	24%	10%	27%	10%	9%
							grade 7 events	37980	28730	35325	26300	37907	36789
								36%	25%	33%	23%	33%	35%

## 2.2 Compared Parameters

Parameter	Planned	Actual
Instrument	ACIS	ACIS
Detector	ACIS-456789	ACIS-456789
Grating	NONE	NONE
Data mode	FAINT	FAINT
Observation mode	SECONDARY	SECONDARY
[deg] Pointing RA	0	178.9753728553435
[deg] Pointing Dec	0	26.98147822147507
[deg] Pointing Roll	0.0	187.2638030914213
[mm] SIM focus pos	-0.684267	-0.6828225247311905
[mm] SIM defocus	0	0.8505141146731063
[mm] SIM translation stage pos	-190.132523	250.4635187648994
[mm] SIM translation stage offset	0	-0.007540371344731511
[s] Observation start time (MET)	291055270.04021	291055269.01521
Observation start date	2007-03-23T16:41:10	2007-03-23T16:41:09
[s] Observation end time (MET)	291070376.490929	291070375.46593
Observation end date	2007-03-23T20:52:56	2007-03-23T20:52:55
Read mode	TIMED	TIMED

Parameter	Planned	Actual
Obspar format version number	7	7
Obspar file type	PREDICTED	ACTUAL
Obspar update status	NONE	UPDATED
On-chip summing requested	N	N
Subarray requested	NONE	NONE
Alternating exposures requested	N	N
[s] Primary exposure time	3.2	3.2

## **2.3 Star Slots**

## **2.4 FID Slots**

## A Summary

### A.1 Status

V&V Scientist	Jen Lauer
V&V Date (YYYY-MM-DD)	2012.04.23
V&V Edition	1
V&V Disposition and Status	OK
V&V Charge Time	4.0824639755487

### A.2 Comments