

V&V Reference Report

L2 ASCDS Version : 7.6.7

Observation 5839 - L2 Version 004
Chandra X-Ray Center

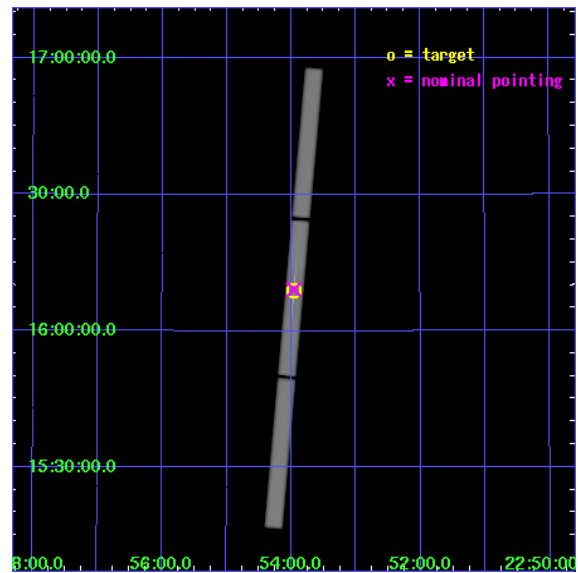
L2 Processing Date : Mar 24 2006

Contents

1	Front	2
2	OBI	3
2.1	OBI	3
2.1.1	Images	3
2.1.2	Parameters	4
2.1.3	Events	4
2.2	Compared Parameters	5
2.3	Aspect	6
2.4	Star Slots	9
2.4.1	Slot 3	9
2.4.2	Slot 4	10
2.4.3	Slot 5	11
2.4.4	Slot 6	12
2.4.5	Slot 7	13
2.5	FID Slots	14
2.5.1	Slot 0	14
2.5.2	Slot 1	15
3	Gratings	16
3.1	LETG Arm	16
A	Summary	18
A.1	Status	18
A.2	Comments	18

1 Front

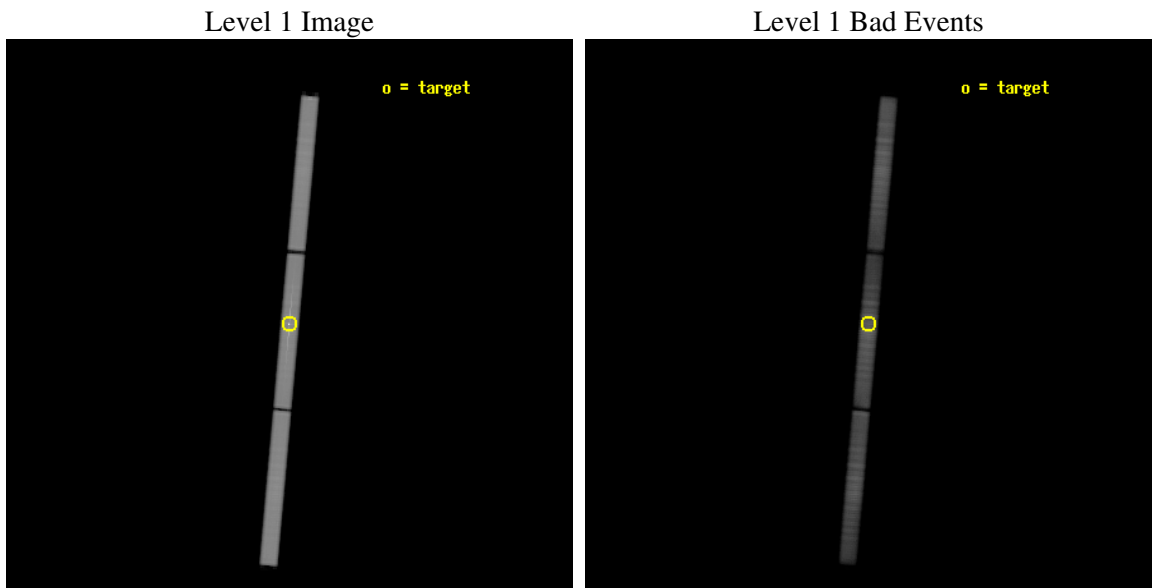
seq_num	900346
obs_id	5839
title	Continuing X-Raying the Intergalactic Medium with Blazars in Outburst: Deeper in Redshift and Wider in Area.
observer	Dr. Fabrizio Nicastro
object	high-z blazar in outburst
ra_targ	343.490417
dec_targ	16.148333
ra_nom	343.49010736583
dec_nom	16.152969037557
roll_nom	95.067422119518
revision	4
ontime	112267.48636672
livetime	111362.55111663
l2events	6788931



2 OBI

2.1 OBI

2.1.1 Images



2.1.2 Parameters

obi_num	1
ascdsver	7.6.7.1
caldbver	3.2.1
date	2006-03-23T01:22:09
revision	4

sched_exp_time	111724.869000
ontime	112267.48636672
l1events	9401909

2.1.3 Events

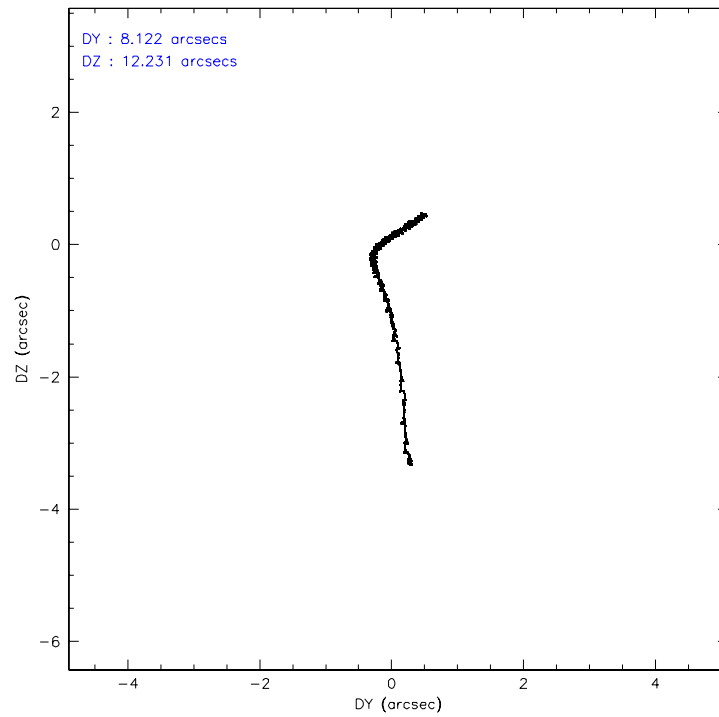
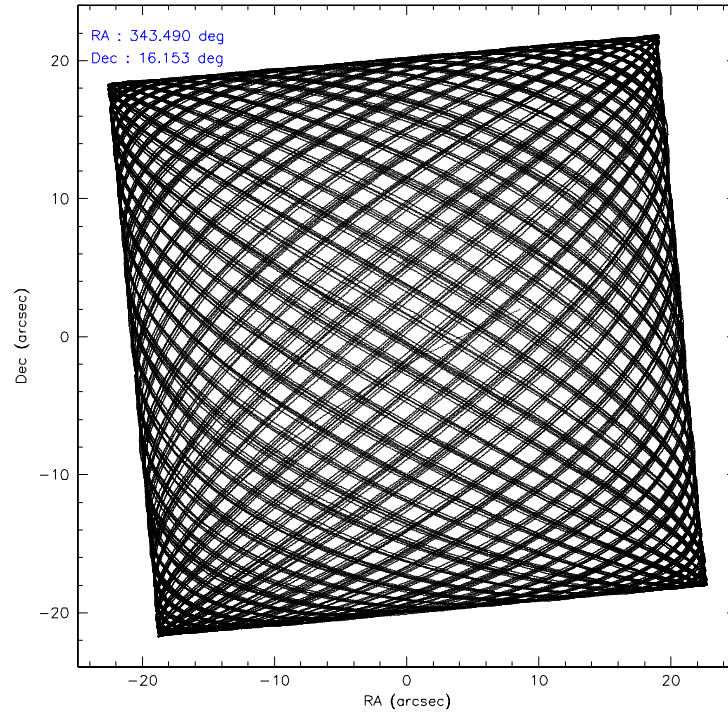
Level 1 Events

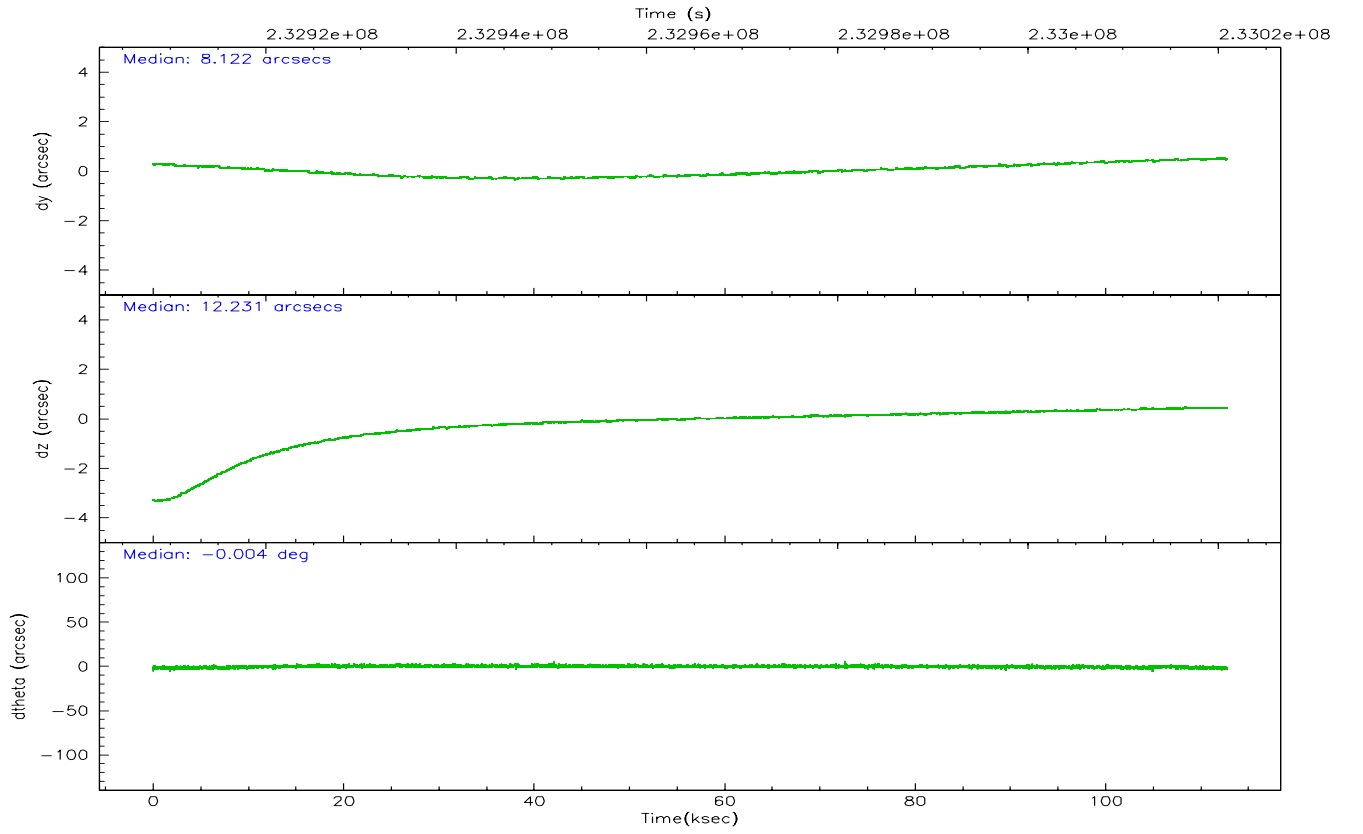
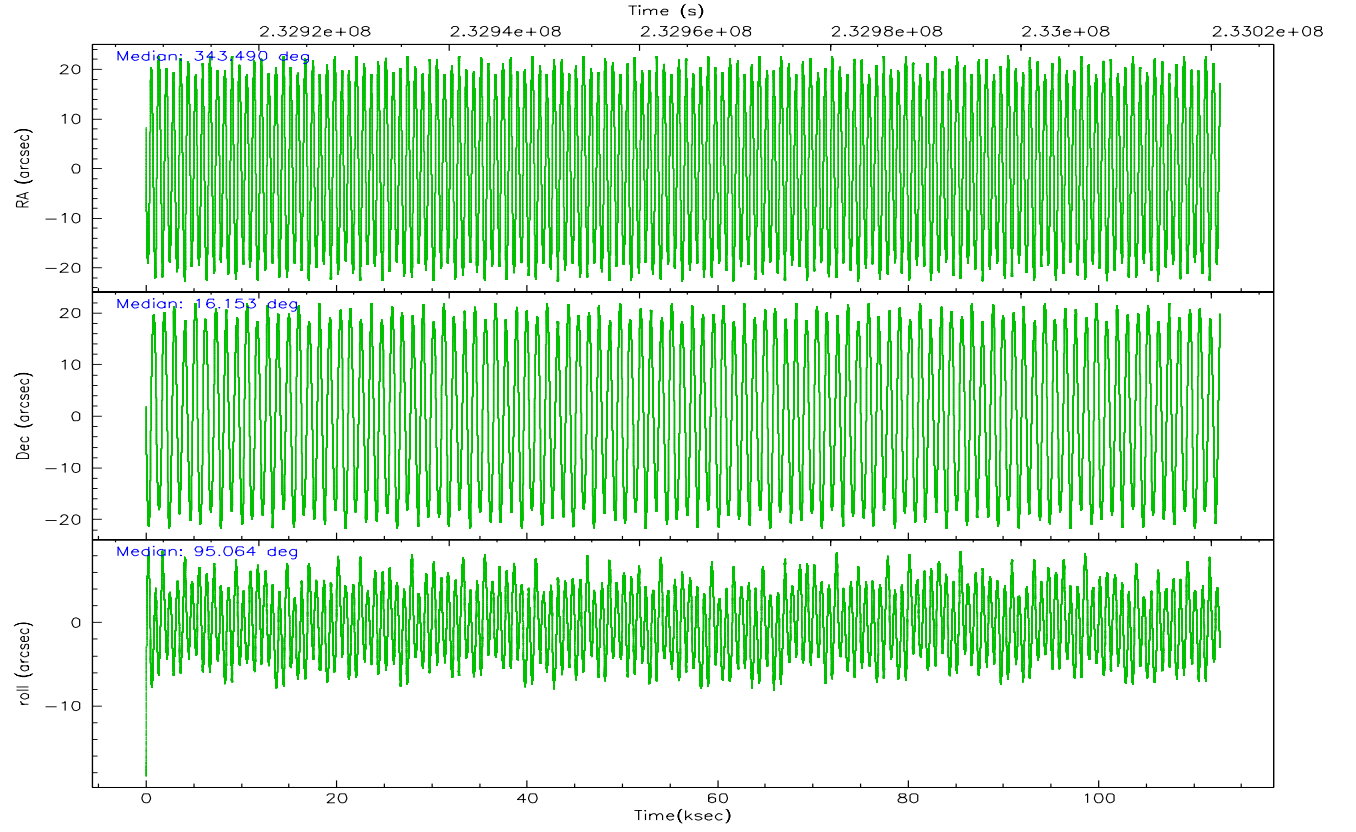
	segment 1	segment 2	segment 3
level 1 events	3163754	3166443	3071712
rejected events	538463	596750	662425
rejected %	17%	18%	21%

2.2 Compared Parameters

Parameter	Planned	Actual	Parameter	Planned	Actual
Instrument	HRC	HRC	Obspar format version number	6	6
Detector	HRC-S	HRC-S	Obspar file type	PREDICTED	ACTUAL
Grating	LETG	LETG	Obspar update status	NONE	UPDATED
Data mode	OBSERVING	OBSERVING			
Observation mode	POINTING	POINTING			
Pointing RA	343.508417	343.4901073658314			
Pointing Dec	16.130435	16.15296903755707			
Pointing Roll	94.995000	95.06742211951772			
SIM focus pos (mm)	-1.429586	-1.428180813131781			
SIM defocus (mm)	0.1037507710433287	0.1051558262725154			
SIM translation stage pos (mm)	250.455976	250.466033080201			
SIM translation stage offset (mm)	0	-0.01005468664627074			
Observation start time	232908310.184000	232907268.45512			
Observation start date	2005-05-19T16:44:06	2005-05-19T16:27:48			
Observation end time	233020035.184000	233021825.02284			
Observation end date	2005-05-20T23:46:11	2005-05-21T00:17:05			

2.3 Aspect



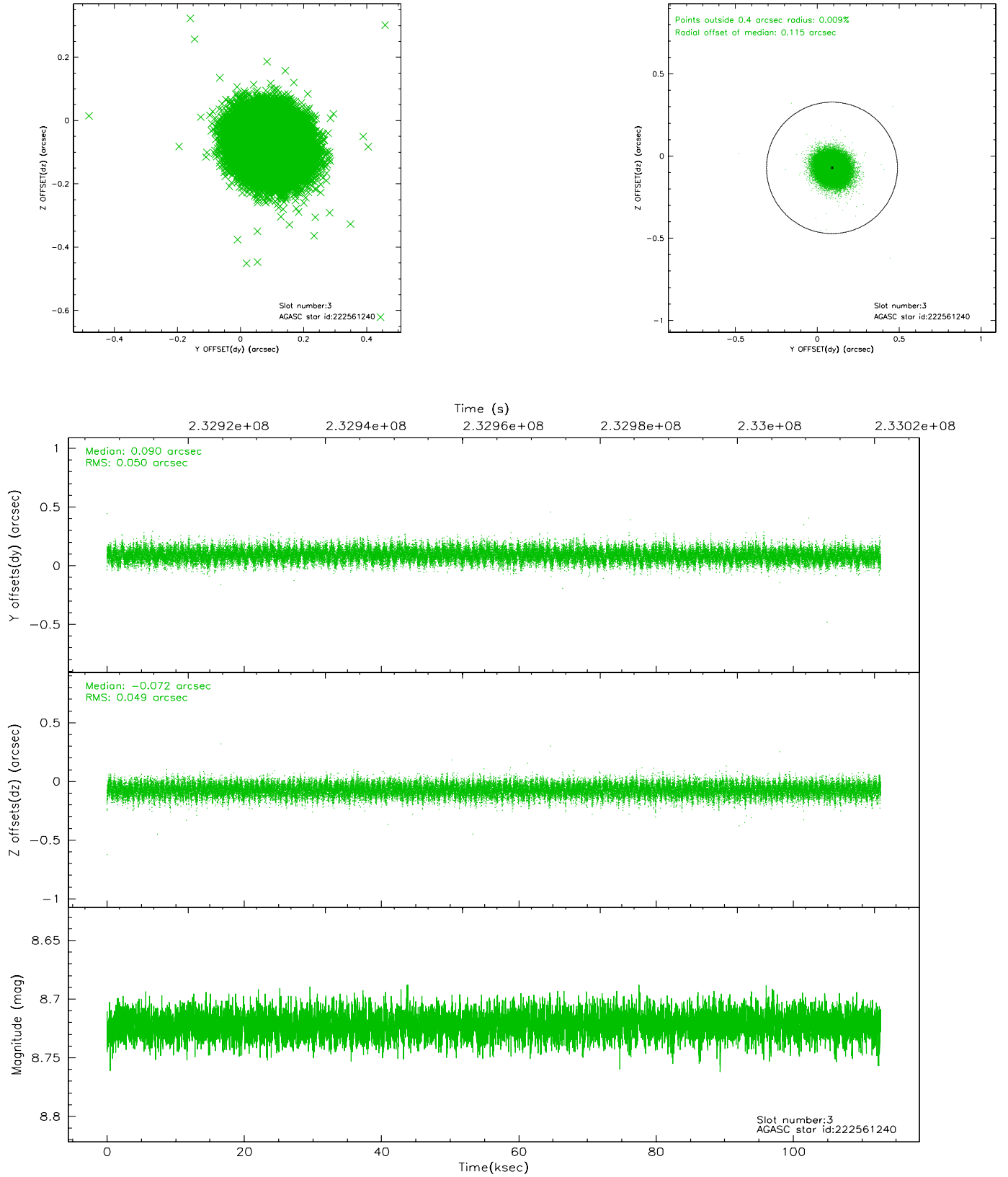


Slot Statistics

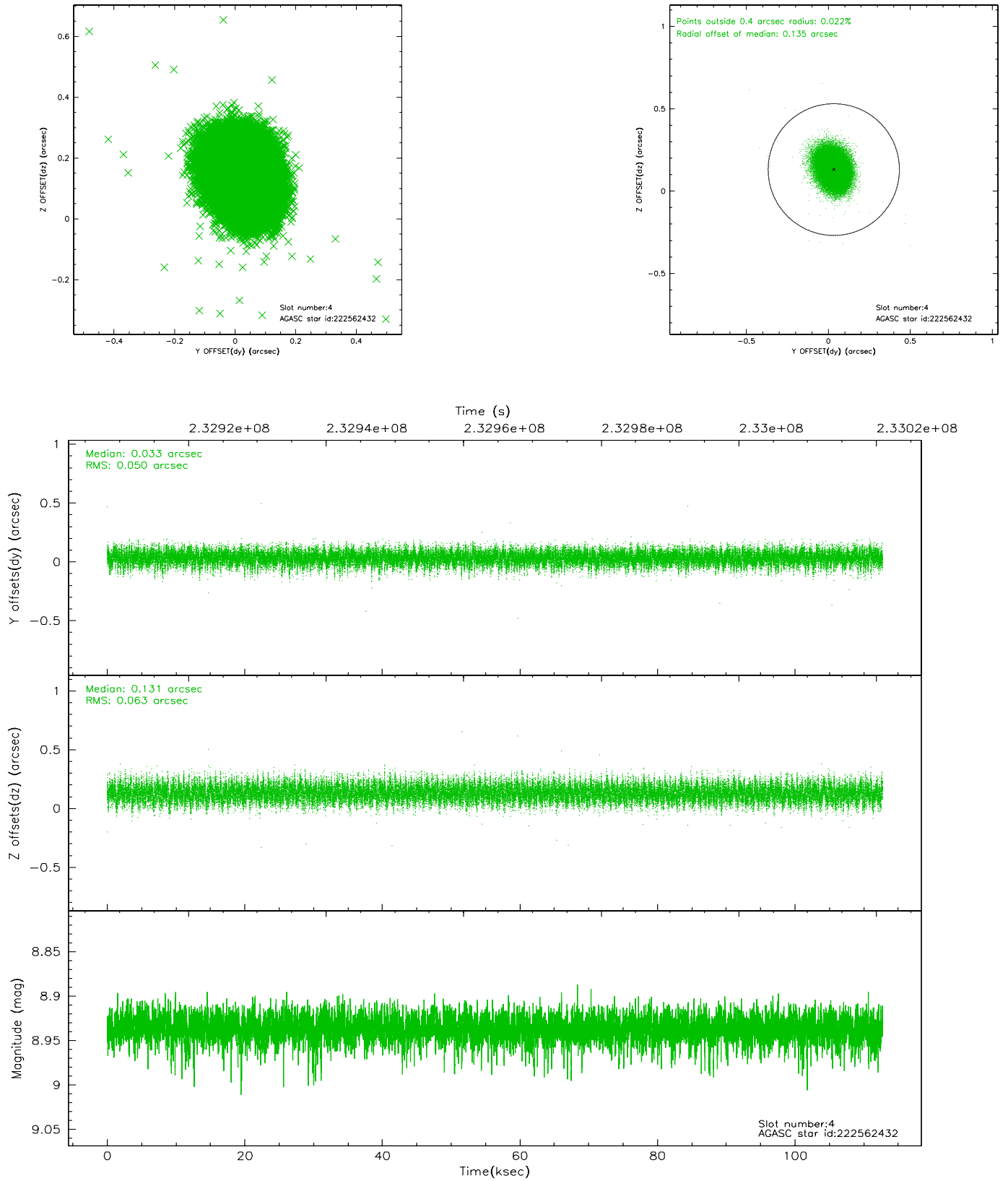
slot	status	id	mag	n_pts	med_dy	med_dz	dr1	dr2	ra	dec	mean_y	mean_z
0	FID	HRC-S-1	7.02	27504	0.138	-0.104	0.007	0.012	0.000000	0.000000	-1162.30	-460.63
1	FID	HRC-S-2	7.02	27504	0.126	-0.102	0.007	0.012	0.000000	0.000000	1237.32	-453.26
2	OMITTED		0.00	0	0.000	0.000	0.000	0.000	0.000000	0.000000	0.00	0.00
3	GUIDE	222561240	8.72	54990	0.090	-0.072	0.074	0.120	343.355884	15.743652	-1340.52	647.44
4	GUIDE	222562432	8.94	54988	0.033	0.131	0.085	0.140	343.698150	16.309399	585.31	-709.11
5	GUIDE	222563736	8.81	54988	-0.127	-0.145	0.087	0.141	343.076284	16.308502	770.51	1430.83
6	GUIDE	222565592	8.25	55001	-0.108	-0.137	0.067	0.107	343.291662	16.508291	1420.66	627.29
7	GUIDE	222565552	9.37	54972	0.114	0.224	0.097	0.156	343.598601	15.997226	-504.53	-268.82

2.4 Star Slots

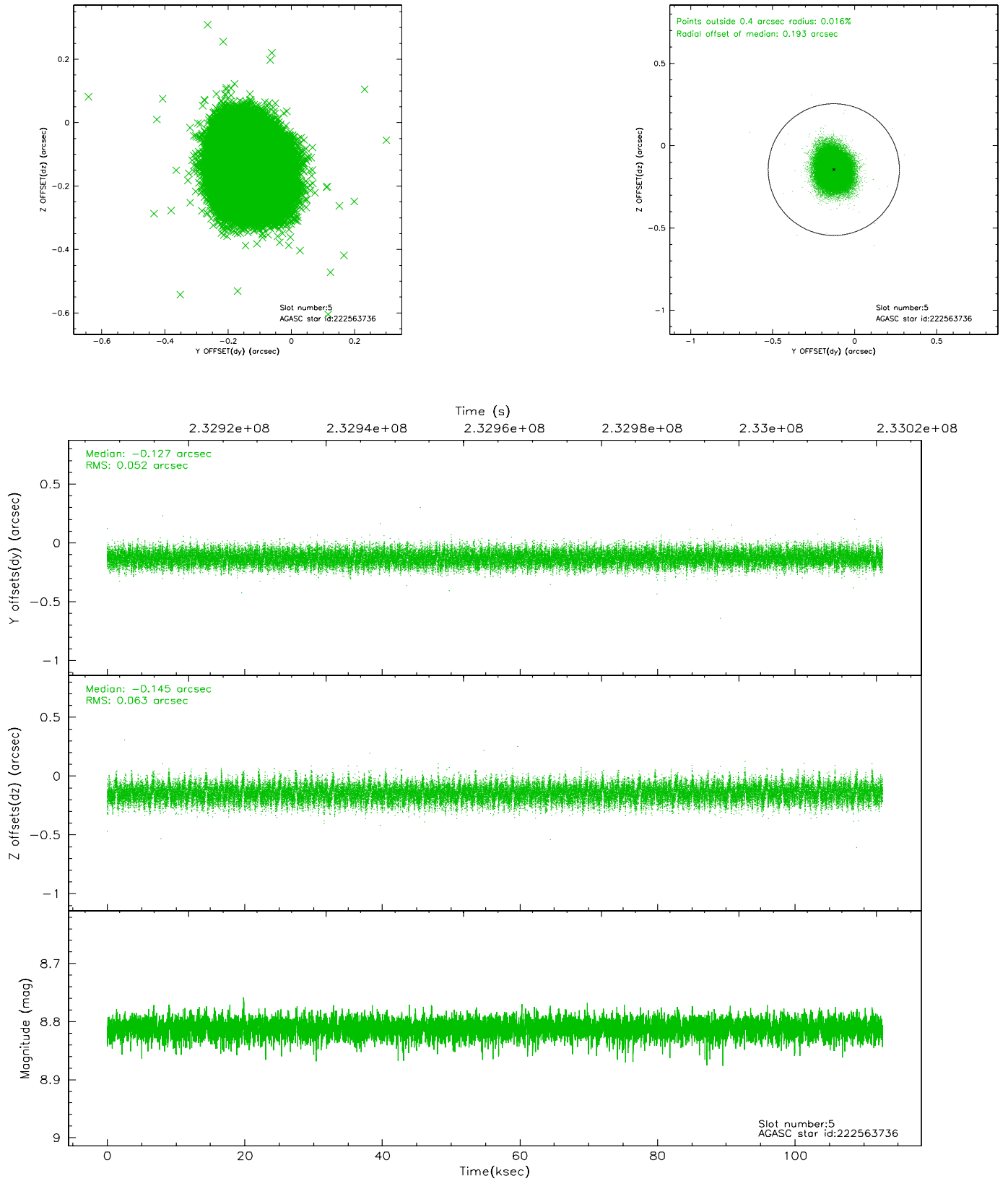
2.4.1 Slot 3



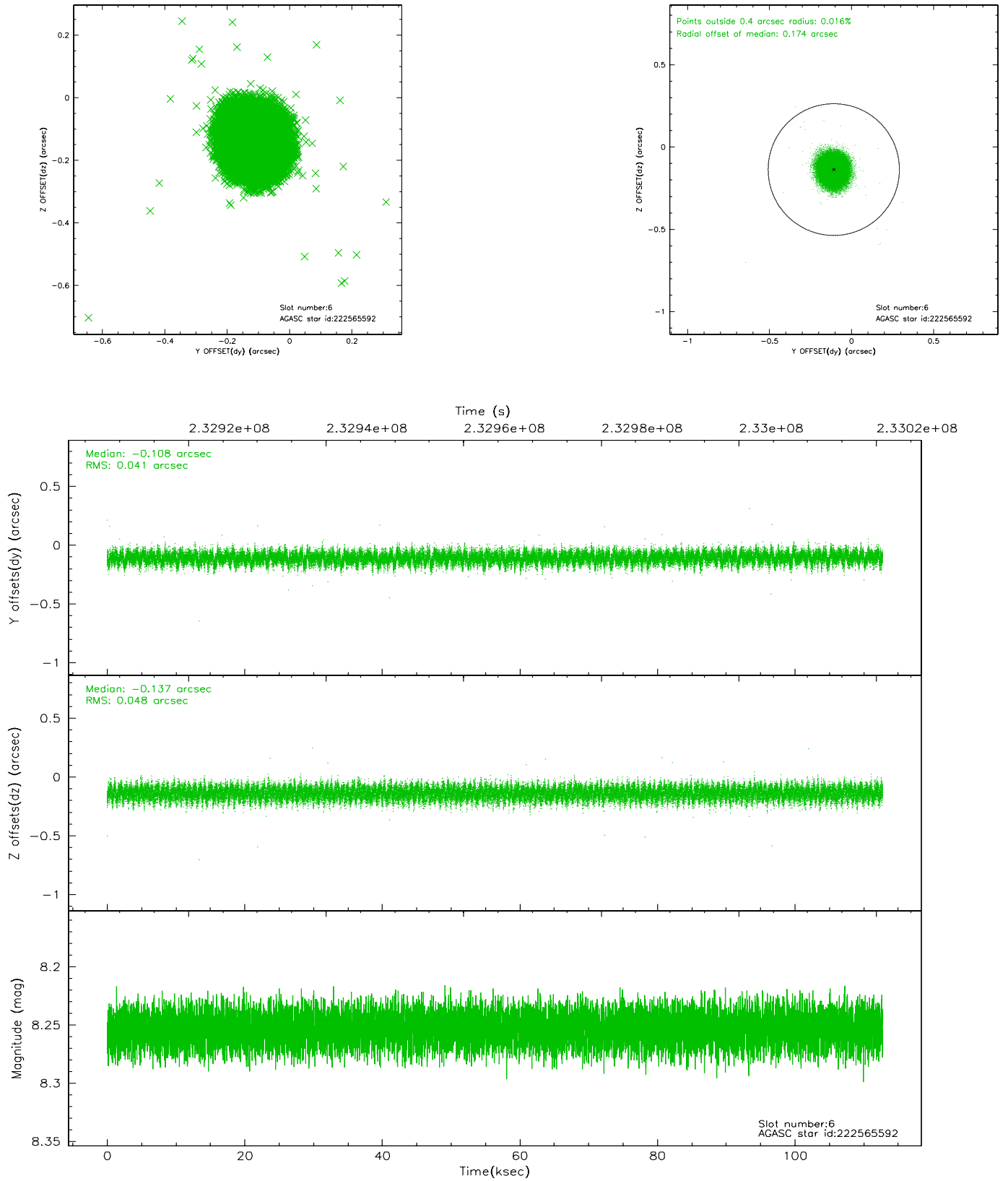
2.4.2 Slot 4



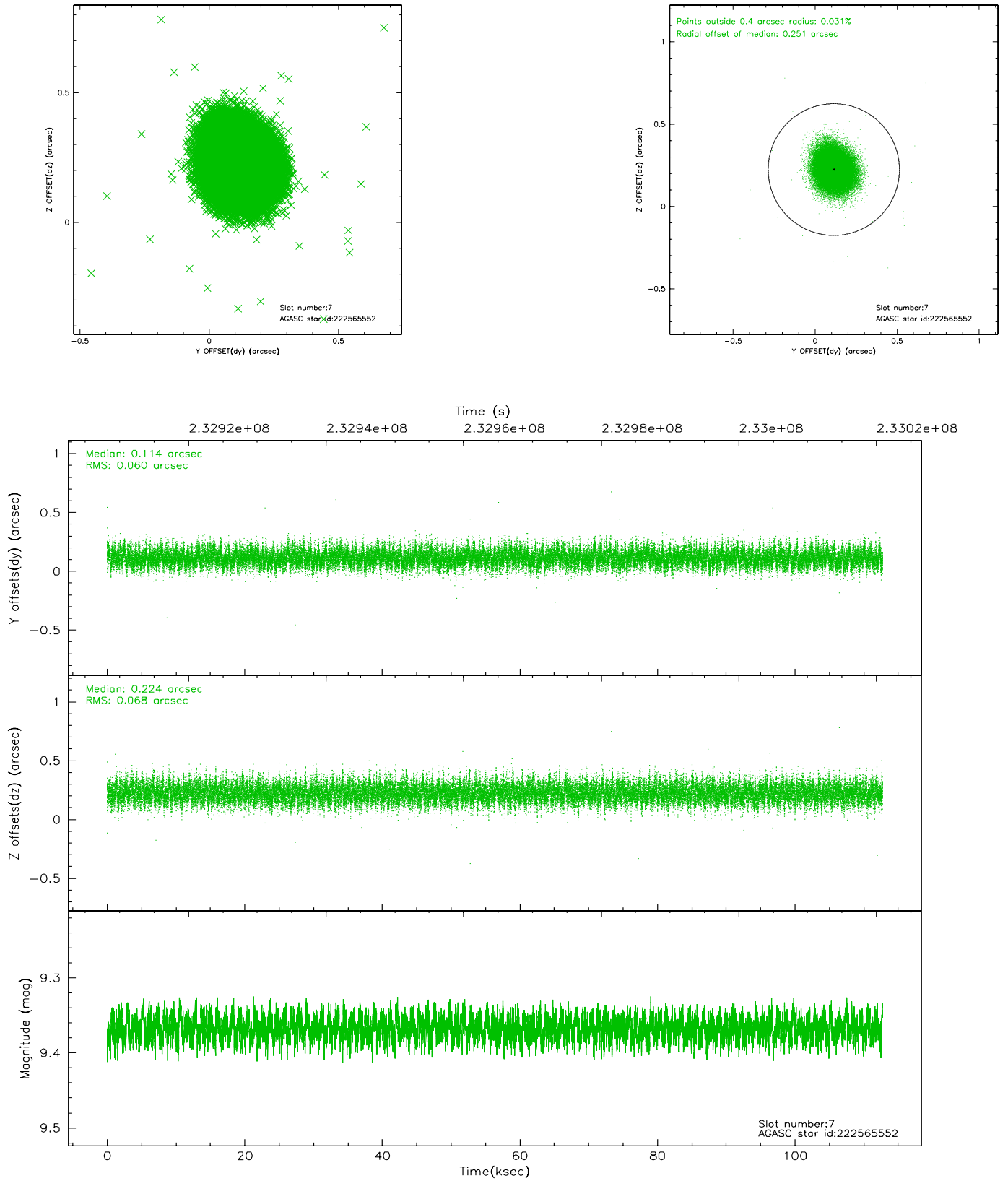
2.4.3 Slot 5



2.4.4 Slot 6

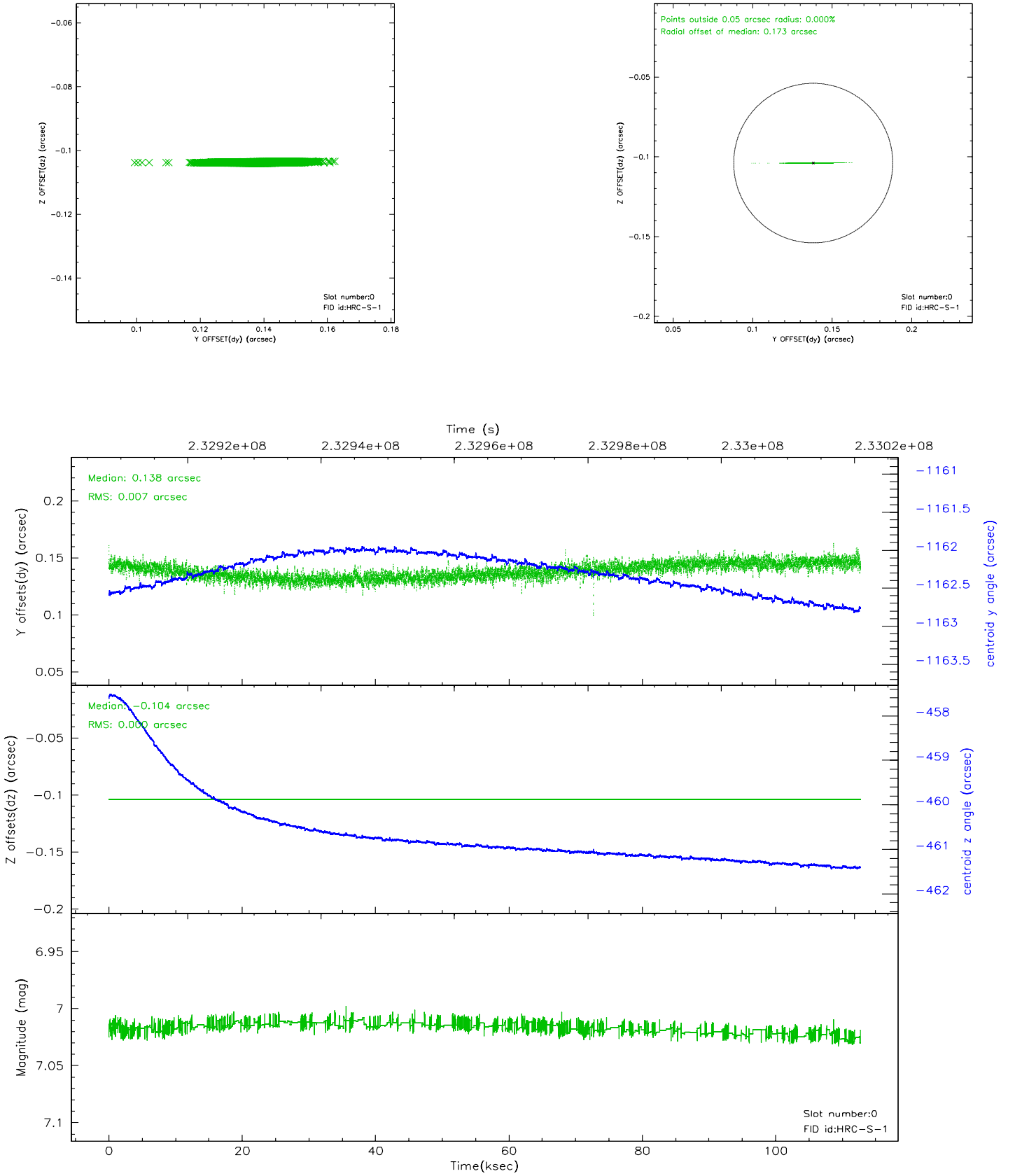


2.4.5 Slot 7

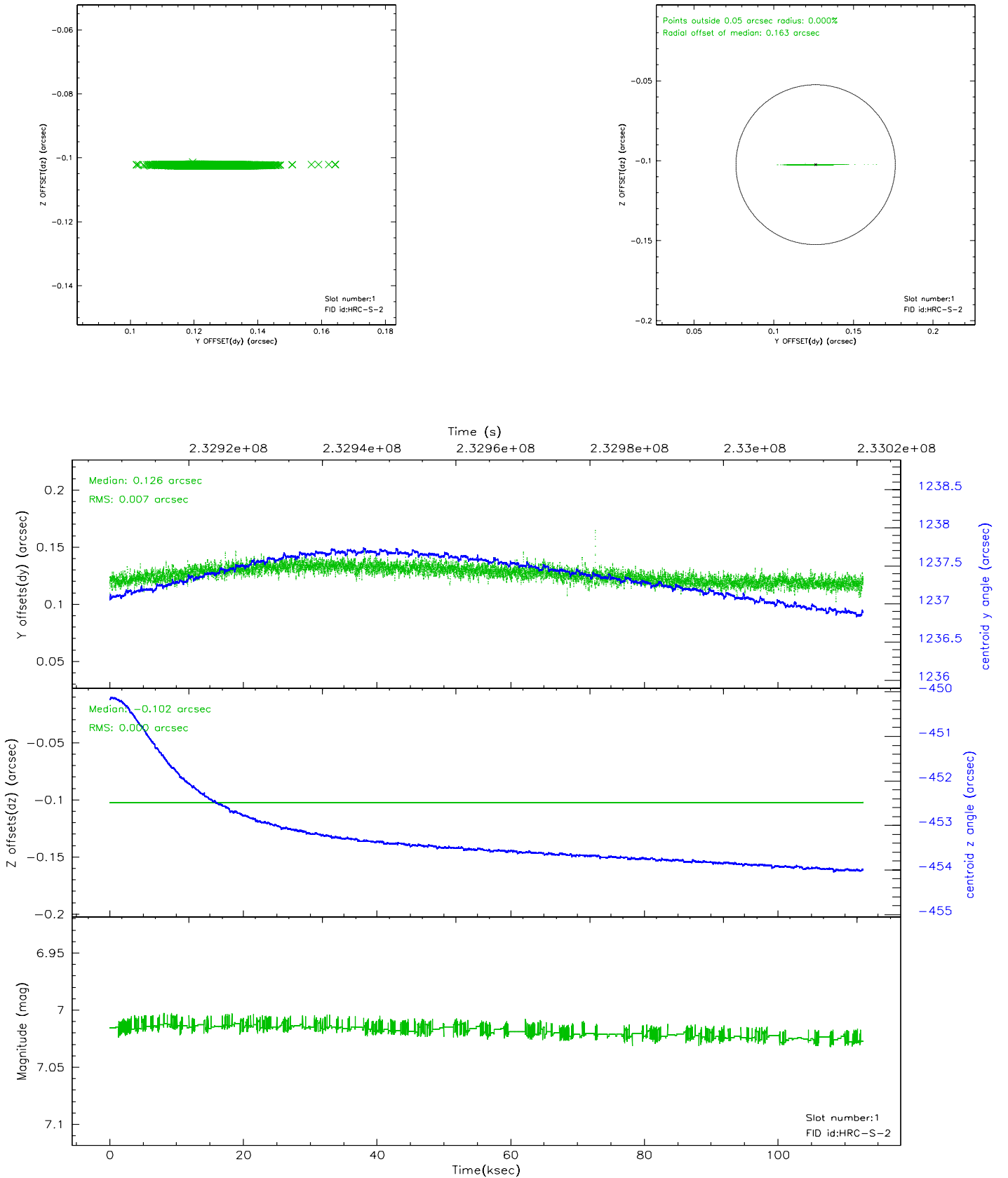


2.5 FID Slots

2.5.1 Slot 0

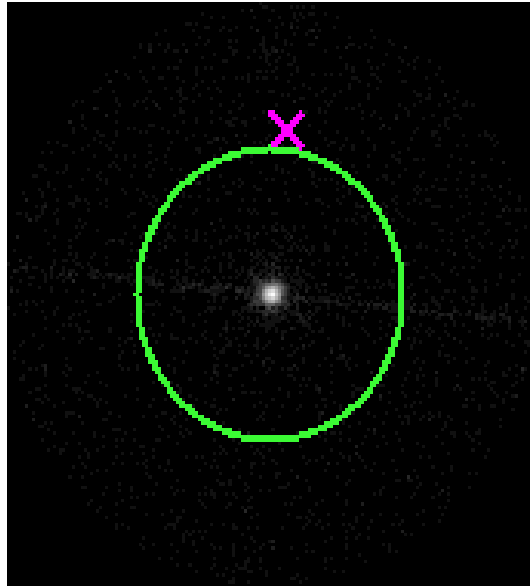


2.5.2 Slot 1



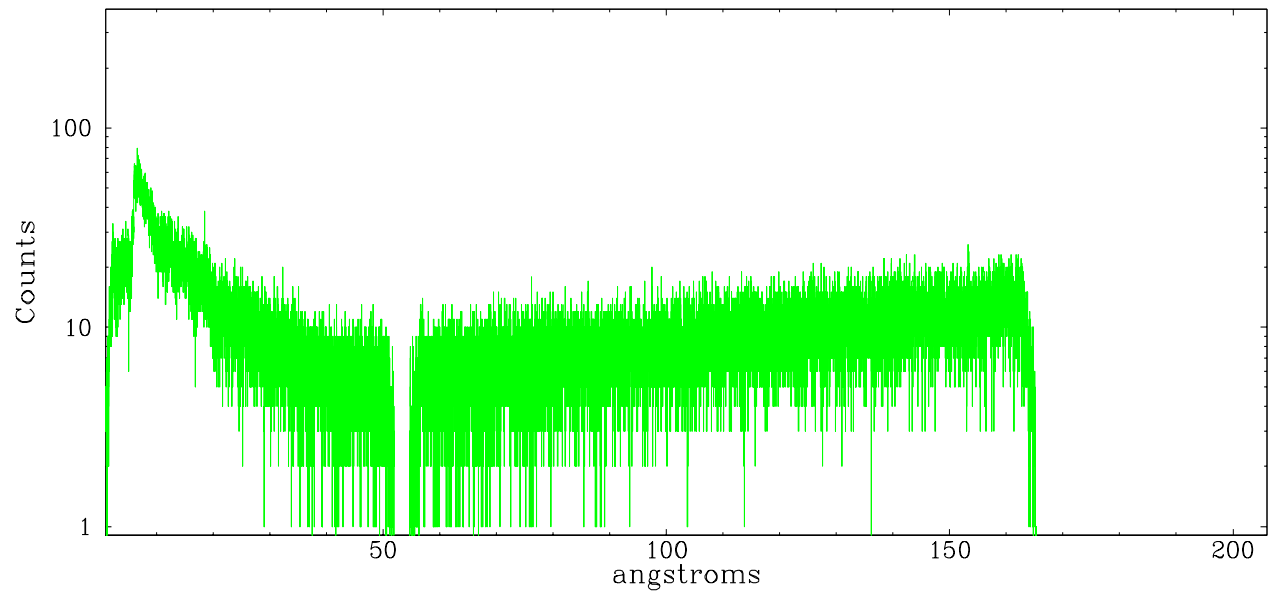
3 Gratings

3.1 LETG Arm

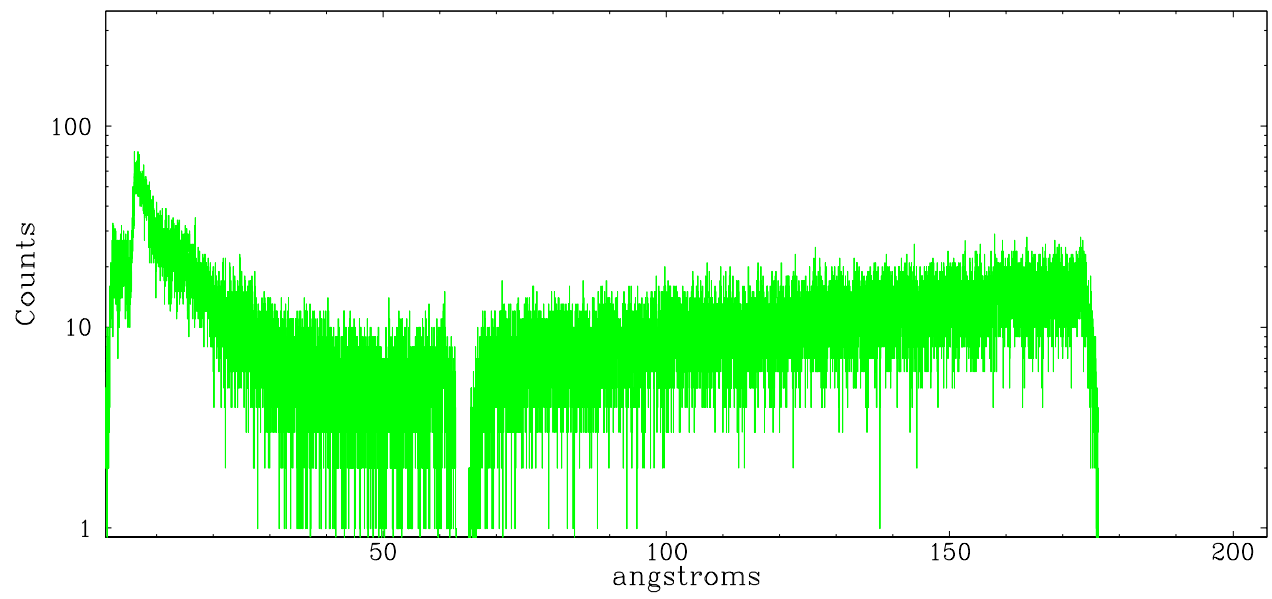


LETG Zero Order

leg order -1



leg order +1



A Summary

A.1 Status

V&V Scientist	Beth Sundheim
V&V Date (YYYY-MM-DD)	2006.03.29
V&V Edition	1
V&V Disposition and Status	OK
V&V Charge Time	112.2674

A.2 Comments

Count rate rises sharply towards the end of the observation.