

V&V Reference Report

L2 ASCDS Version : 8.5.1

Observation 5689 - L2 Version 3
Chandra X-Ray Center

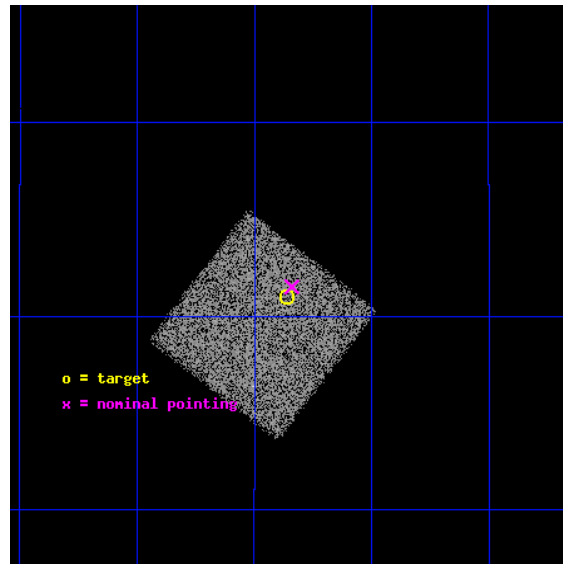
L2 Processing Date : Dec 18 2012

Contents

1	Front	2
2	OBI	3
2.1	OBI	3
2.1.1	Images	3
2.1.2	Bias	3
2.1.3	Parameters	4
2.1.4	Events	4
2.2	Compared Parameters	5
2.3	Aspect	6
2.4	Star Slots	9
2.4.1	Slot 3	9
2.4.2	Slot 4	10
2.4.3	Slot 5	11
2.4.4	Slot 6	12
2.4.5	Slot 7	13
2.5	FID Slots	14
2.5.1	Slot 0	14
2.5.2	Slot 1	15
2.5.3	Slot 2	16
A	Summary	17
A.1	Status	17
A.2	Comments	17

1 Front

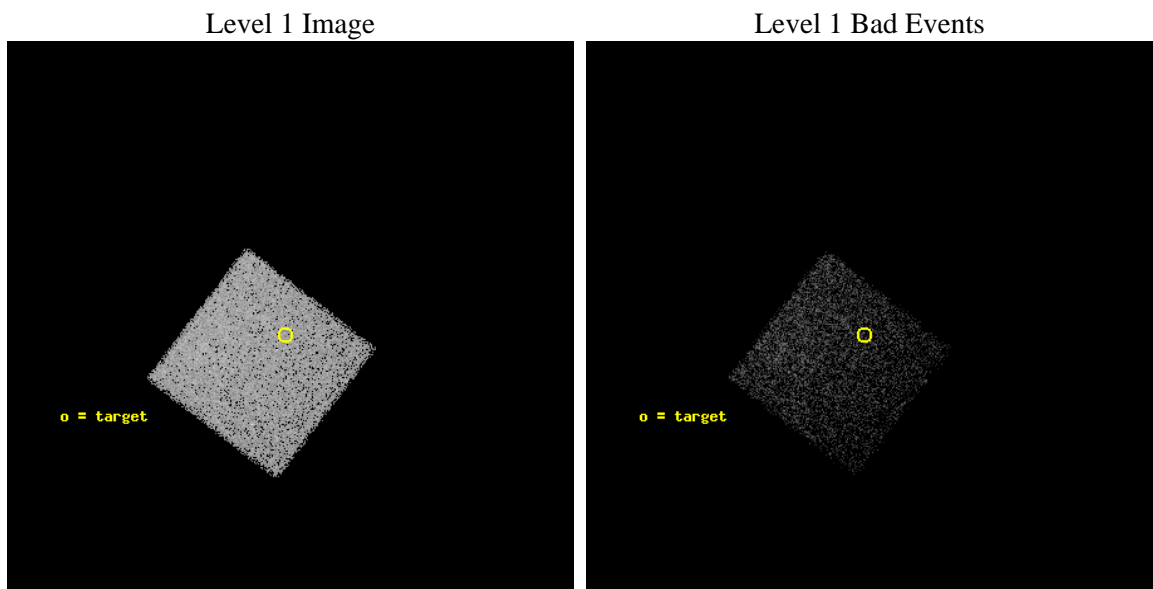
seq_num	701112	Sequence number
obs_id	5689	Observation id
title	Bringing in the Last SHEEP	Proposal title
observer	Prof Kirpal Nandra	Principal investigator
object	AX J1241.3+3501	Source name
dtcycle	0	
cycle	P	events from which exps? Prim/Second/Both
ra_targ	190.340417	Observer's specified target RA [deg]
dec_targ	35.016944	Observer's specified target Dec [deg]
ra_nom	190.33508419142	Nominal RA [deg]
dec_nom	35.025481439463	Nominal Dec [deg]
roll_nom	127.47124786693	Nominal Roll [deg]
revision	3	Processing version of data
ontime	5081.5999810696	Sum of GTIs [s]
livetime	5017.2537023371	Livetime [s]
ontime7	5081.5999810696	Sum of GTIs [s]
l2events	20540	Number of level 2 events



2 OBI

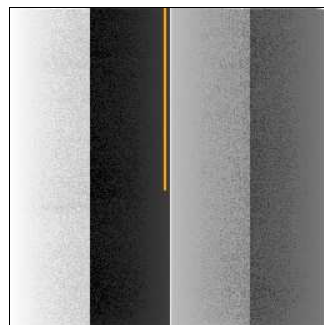
2.1 OBI

2.1.1 Images



2.1.2 Bias

Chip 7



2.1.3 Parameters

obi_num	0	Obi number	sched_exp_time	5000.000000	[s] Scheduled observation exposure time
ascdsver	8.5.1	Processing system revision	ontime	5081.5999810696	Sum of GTIs [s]
caldsver	4.5.5	 	ontime7	5081.5999810696	Sum of GTIs [s]
date	2012-12-17T19:24:24	Date and time of file creation	l1events	49717	Number of level 1 events
revision	3	Processing version of data			

2.1.4 Events

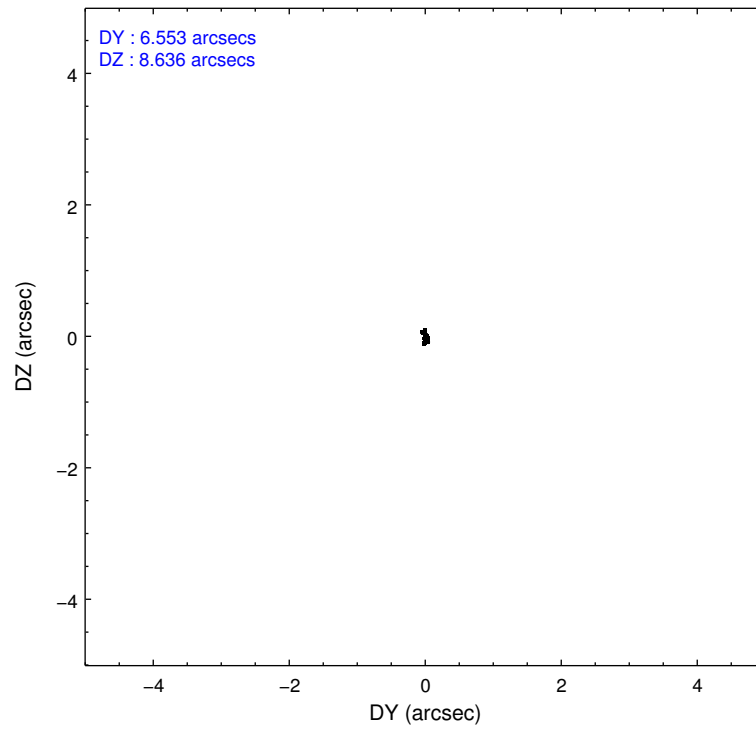
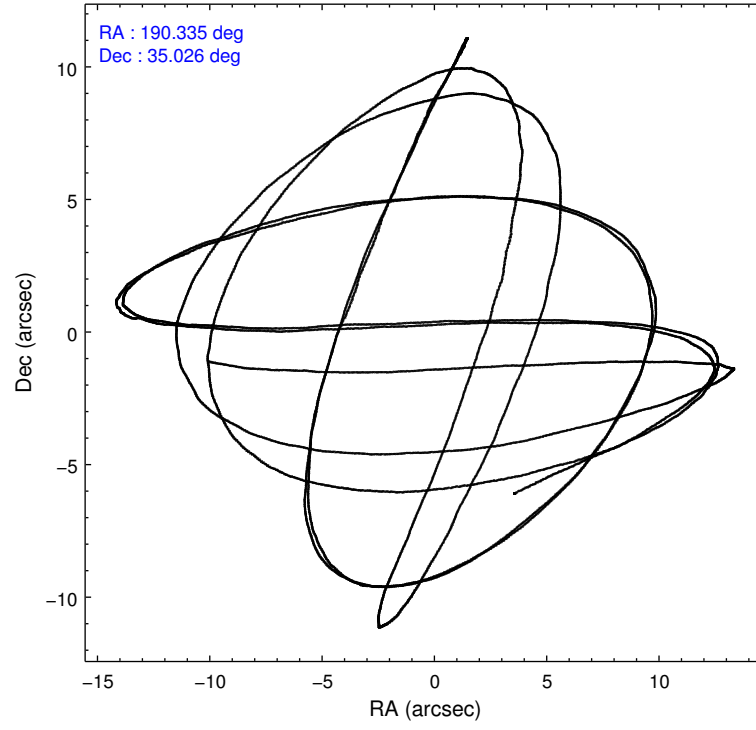
	ccd 7
level 1 events	49717
rejected events	28685
rejected %	57%

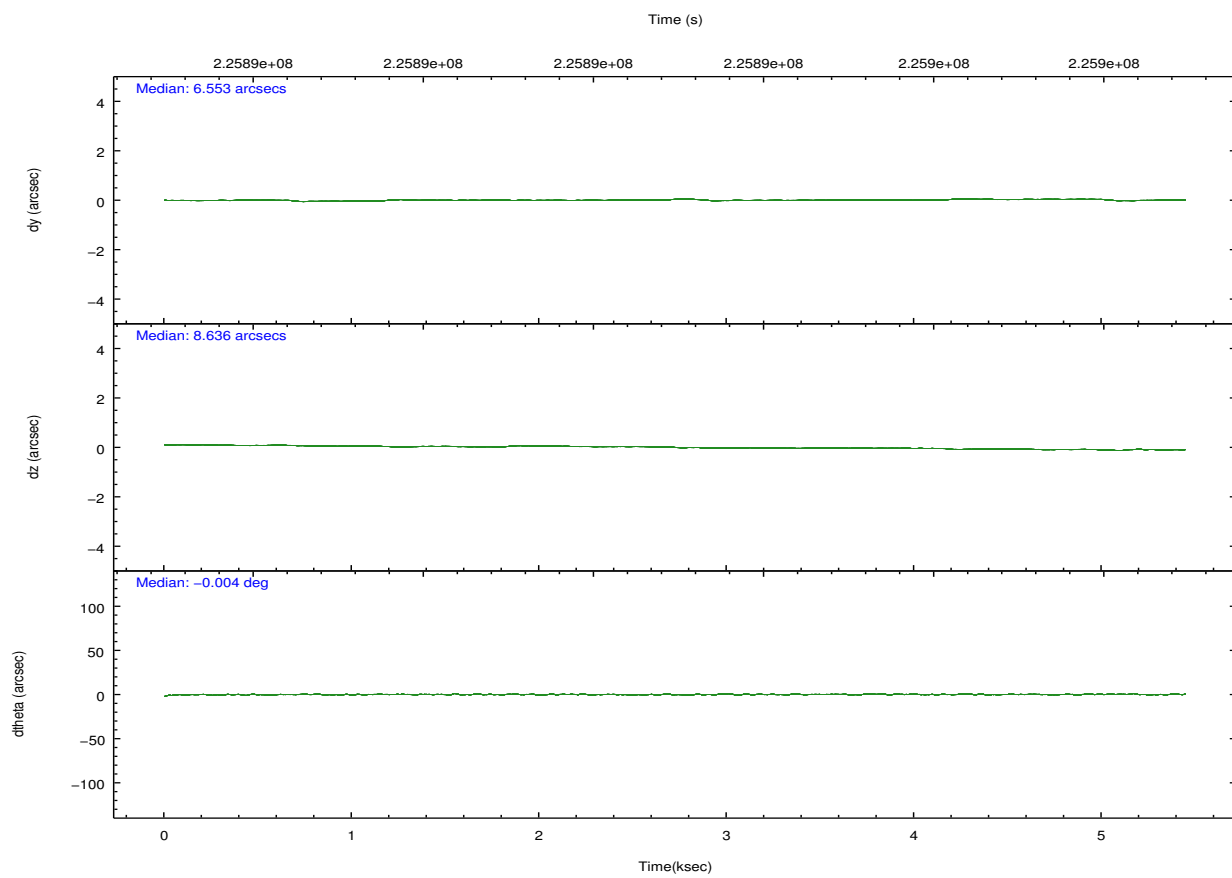
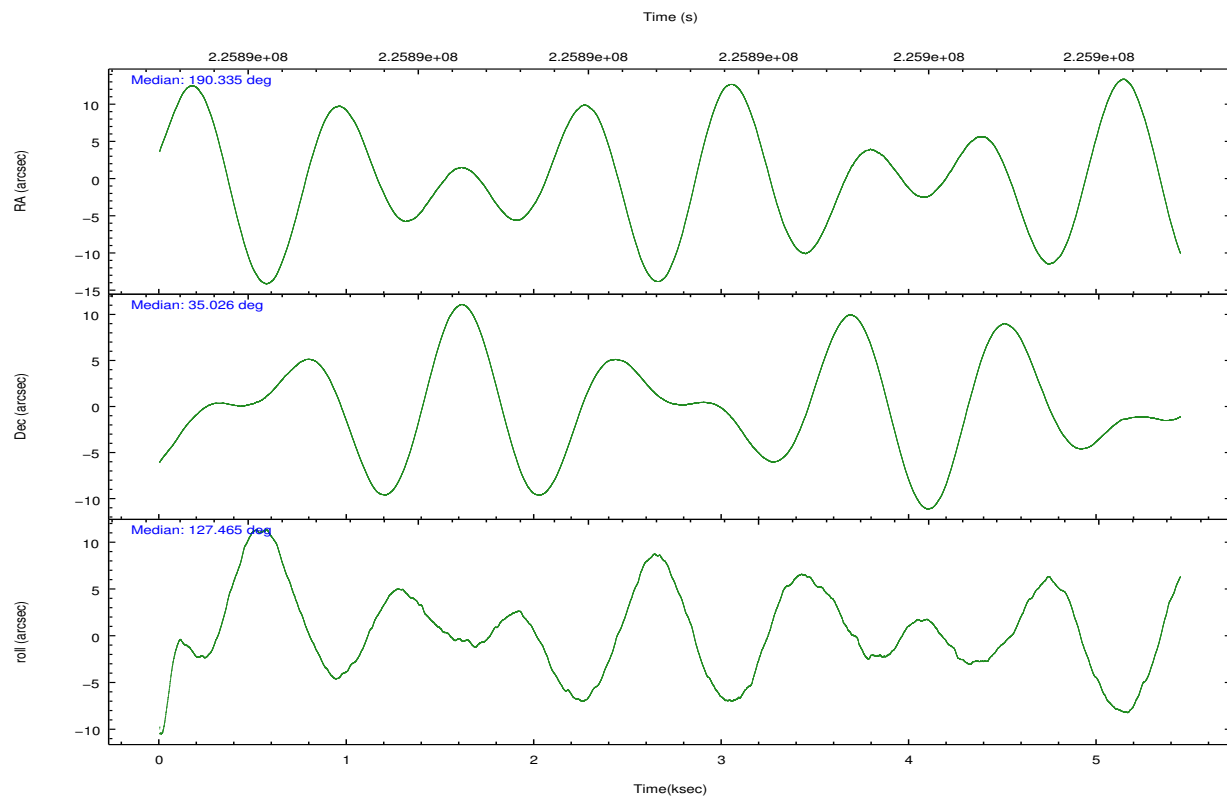
	ccd 7
grade 0 events	1888
	3%
grade 1 events	38
	0%
grade 2 events	4279
	8%
grade 3 events	1837
	3%
grade 4 events	1824
	3%
grade 5 events	4674
	9%
grade 6 events	11231
	22%
grade 7 events	23946
	48%

2.2 Compared Parameters

Parameter	Planned	Actual	Parameter	Planned	Actual
Instrument	ACIS	ACIS	Obspar format version number	7	7
Detector	ACIS-7	ACIS-7	Obspar file type	PREDICTED	ACTUAL
Grating	NONE	NONE	Obspar update status	NONE	UPDATED
Data mode	FAINT	FAINT	Number of optional ACIS chips dropped	0	0
Observation mode	POINTING	POINTING	On-chip summing requested	N	N
[deg] Pointing RA	190.365871	190.3350841914188	Subarray requested	NONE	NONE
[deg] Pointing Dec	35.015442	35.02548143946271	Alternating exposures requested	N	N
[deg] Pointing Roll	127.296955	127.4712478669315	[s] Primary exposure time	0.000000	3.2
[mm] SIM focus pos	-0.684267	-0.6828225247311905			
[mm] SIM defocus	0	0.001444936568705701			
[mm] SIM translation stage pos	-190.132523	-190.1425803651734			
[mm] SIM translation stage offset	0	0.01005778216563158			
[s] Observation start time (MET)	225891202.184000	225890369.26134			
Observation start date	2005-02-27T11:32:18	2005-02-27T11:19:29			
[s] Observation end time (MET)	225896202.184000	225896753.47412			
Observation end date	2005-02-27T12:55:38	2005-02-27T13:05:53			
Read mode	TIMED	TIMED			

2.3 Aspect



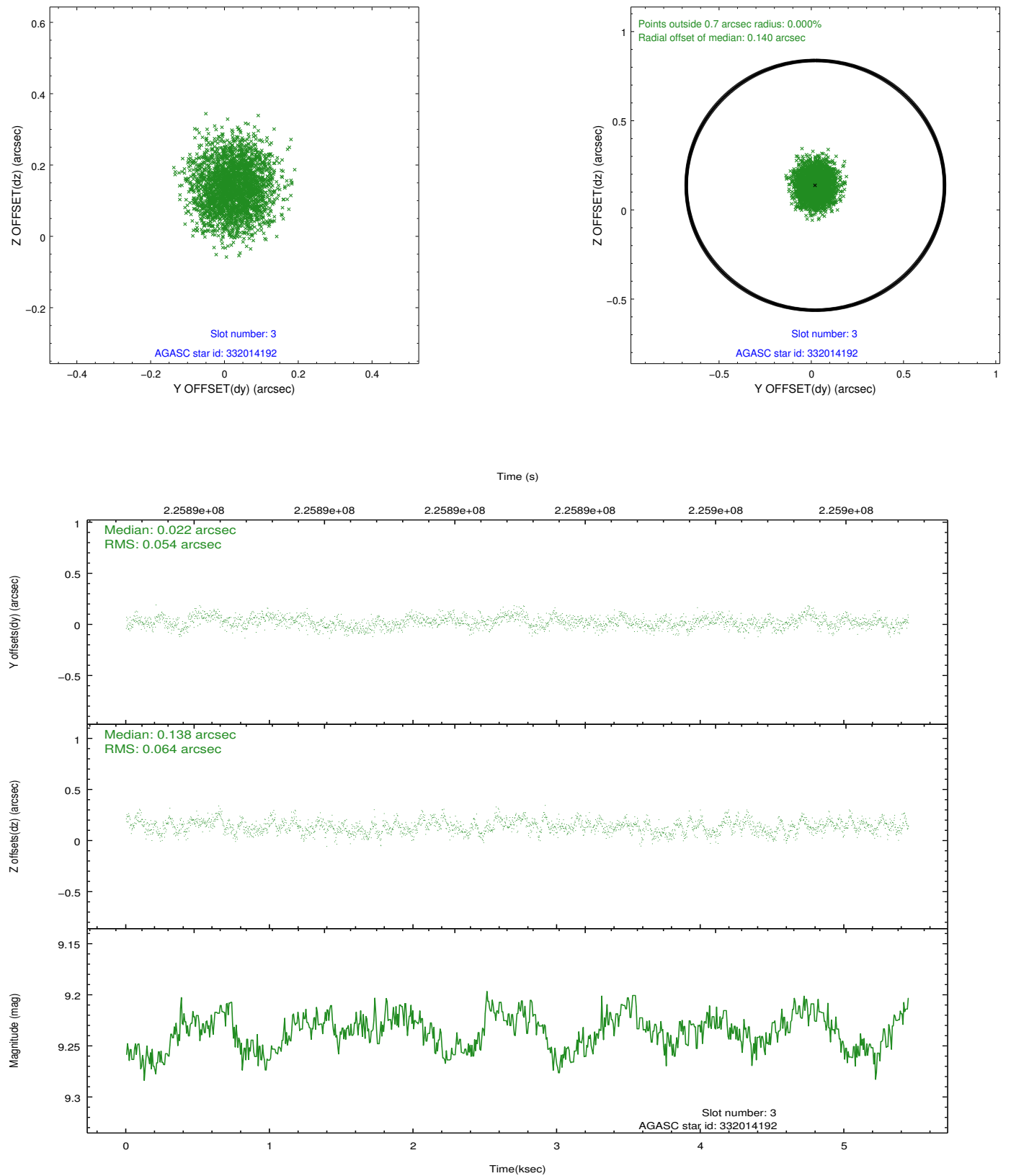


Slot Statistics

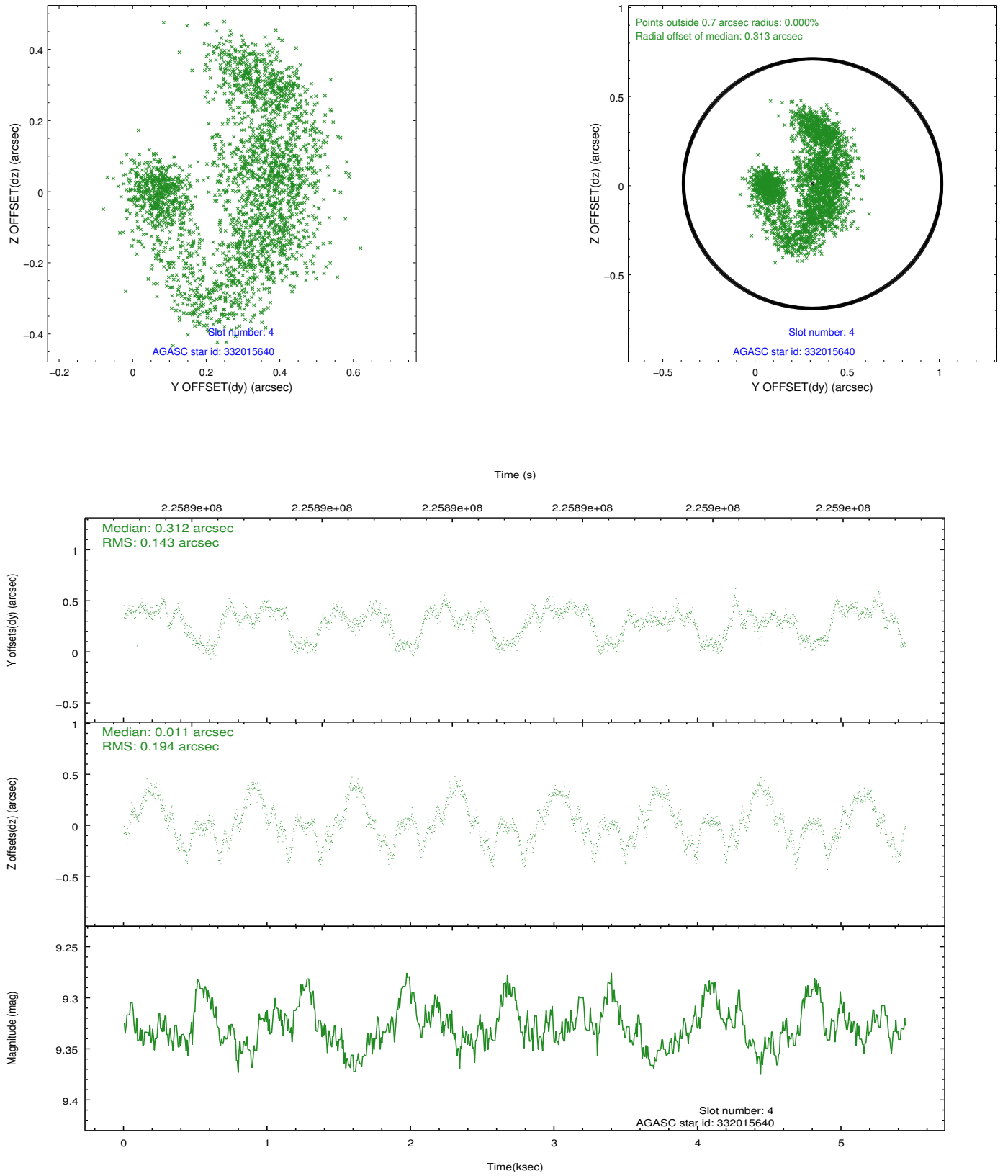
slot	status	id	mag	n_pts	med_dy	med_dz	dr1	dr2	ra	dec	mean_y	mean_z
0	FID	ACIS-S-2	7.10	1328	-0.034	-0.043	0.006	0.010	0.000000	0.000000	-759.33	-1729.83
1	FID	ACIS-S-4	7.21	1328	0.070	0.028	0.005	0.009	0.000000	0.000000	2153.55	177.57
2	FID	ACIS-S-5	7.23	1329	-0.067	0.024	0.006	0.010	0.000000	0.000000	-1810.78	172.51
3	GUIDE	332014192	9.24	2652	0.022	0.138	0.091	0.142	190.471528	35.049316	-91.16	-321.22
4	GUIDE	332015640	9.33	2657	0.312	0.011	0.274	0.373	190.909260	35.310478	-117.78	-1915.68
5	GUIDE	332016416	9.61	2651	-0.227	-0.081	0.169	0.249	190.524699	35.806671	1985.75	-2095.33
6	GUIDE	332021344	8.31	2656	-0.005	-0.055	0.084	0.129	189.937719	35.086871	971.98	845.74
7	GUIDE	332021600	7.17	2656	-0.076	-0.007	0.083	0.130	190.219735	34.104561	-2344.06	2333.91

2.4 Star Slots

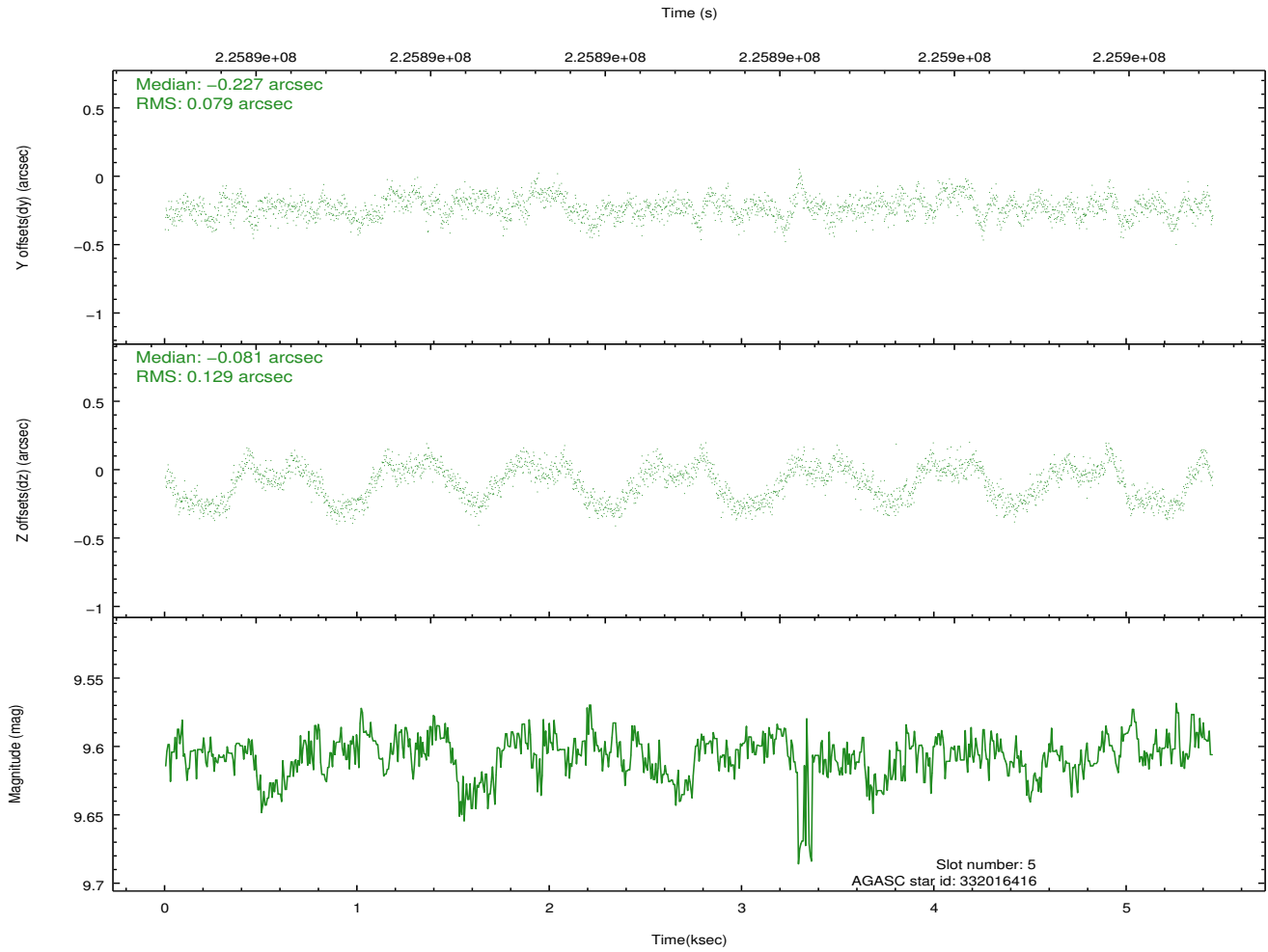
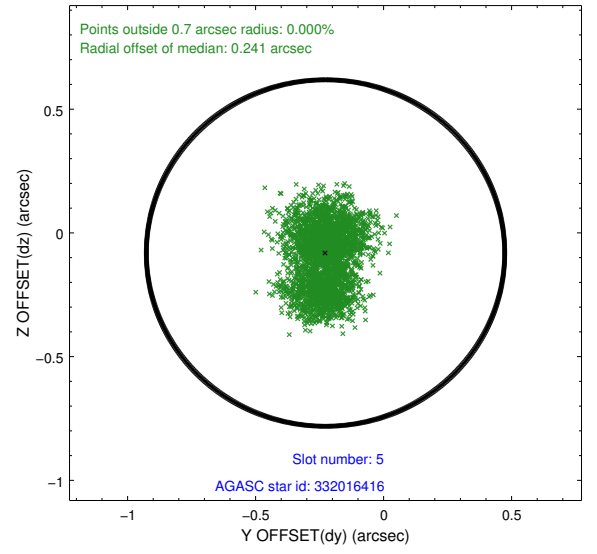
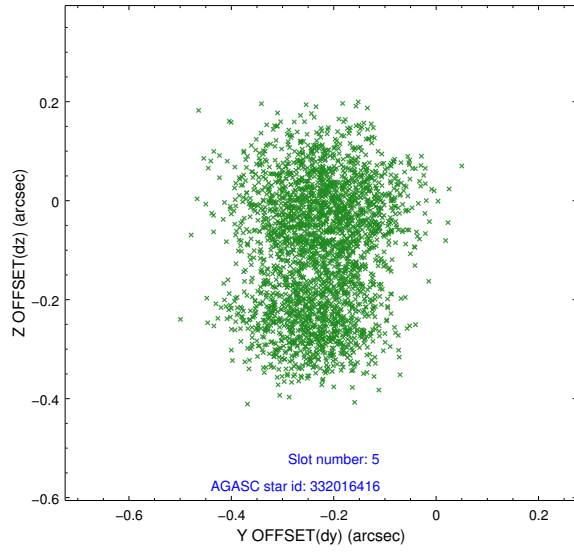
2.4.1 Slot 3



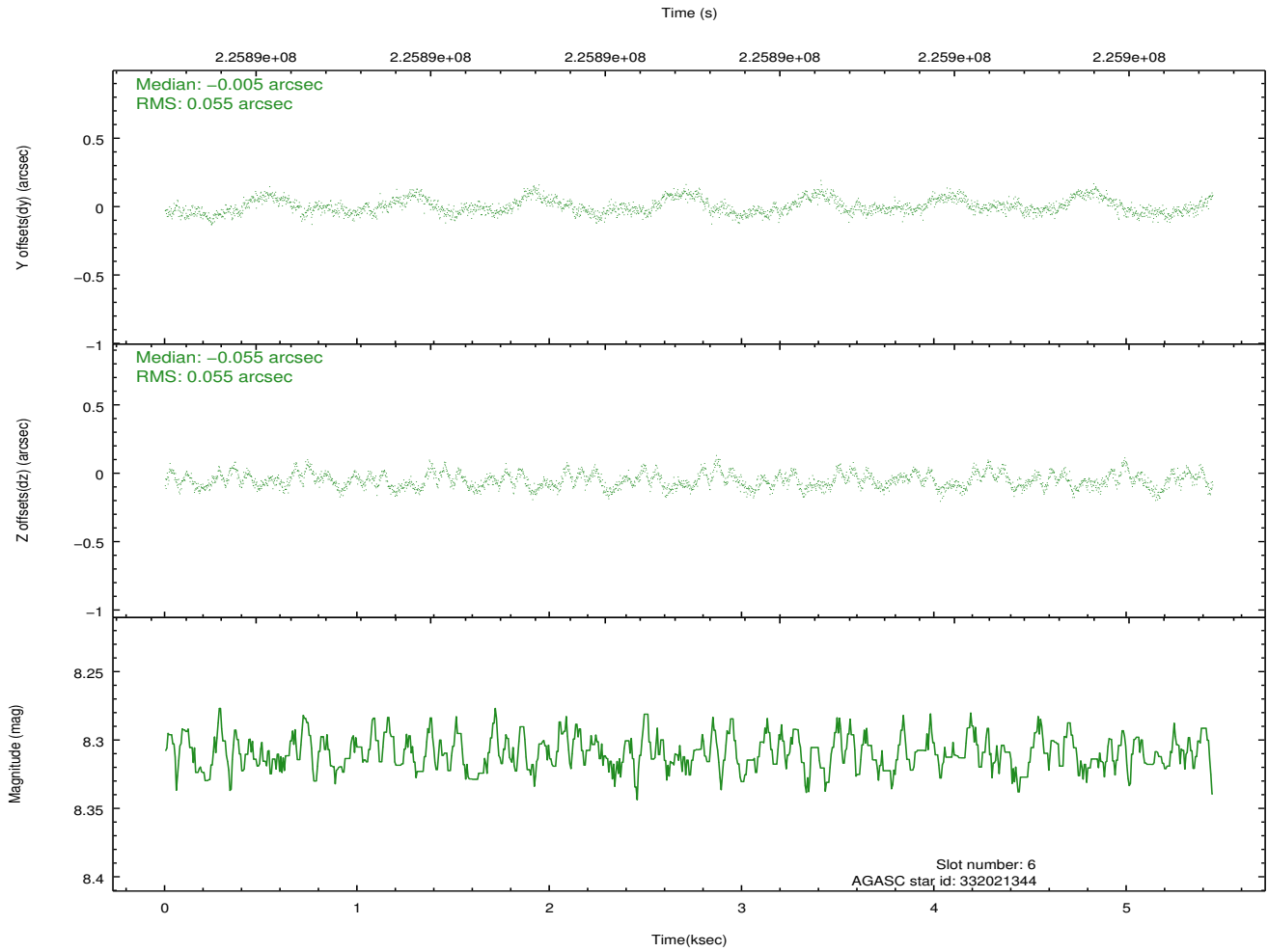
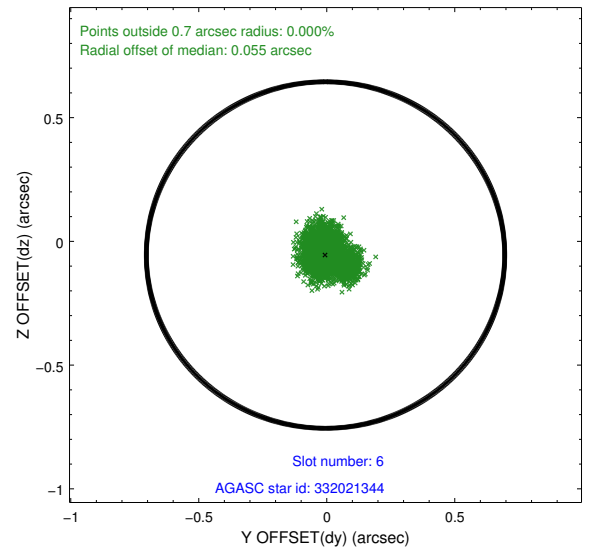
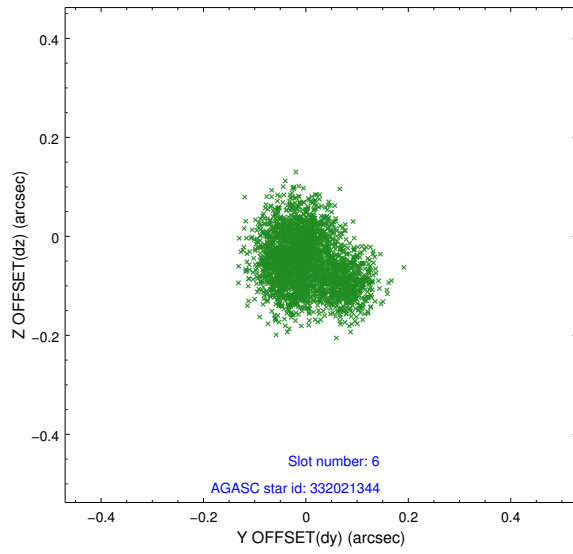
2.4.2 Slot 4



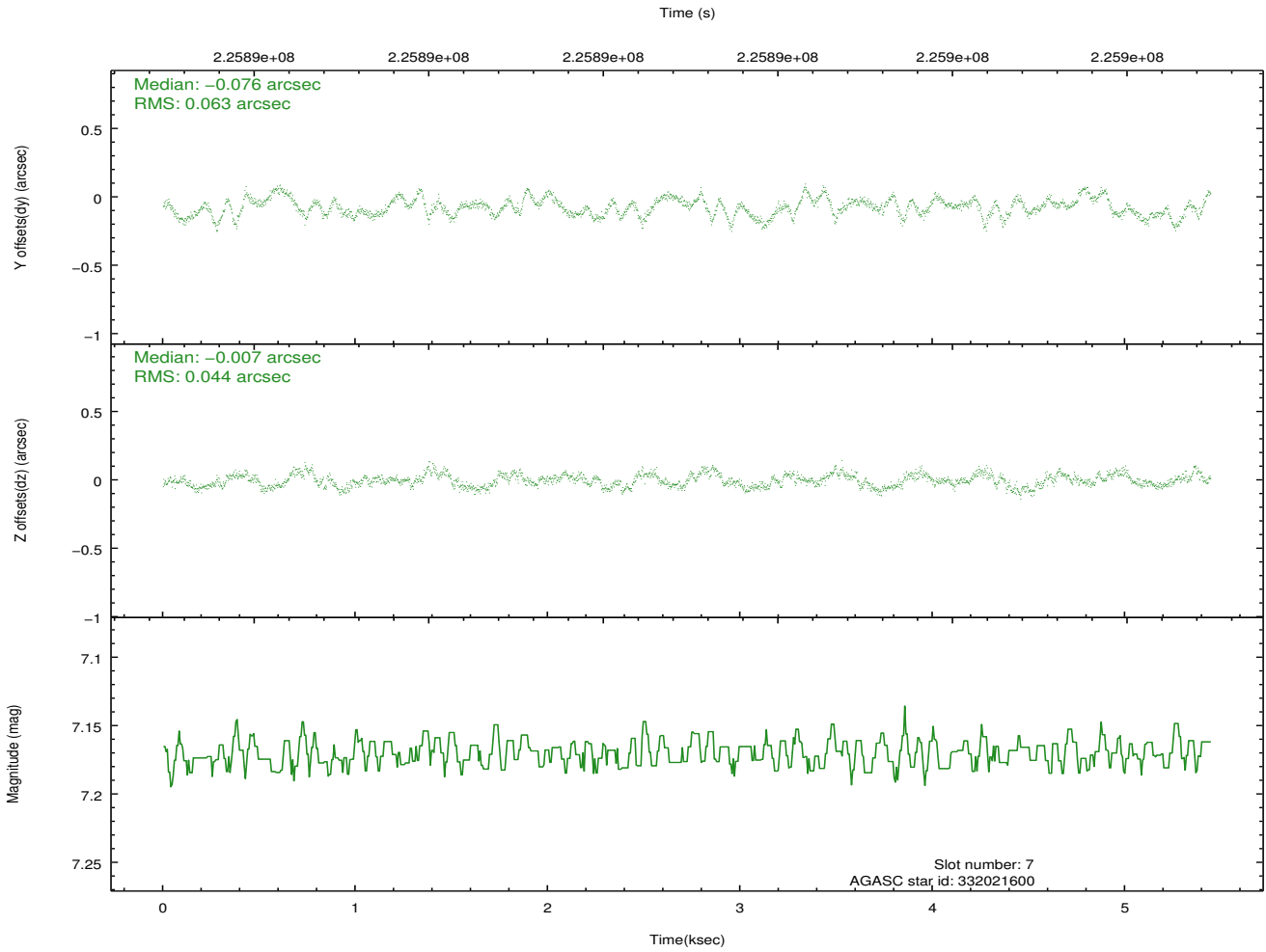
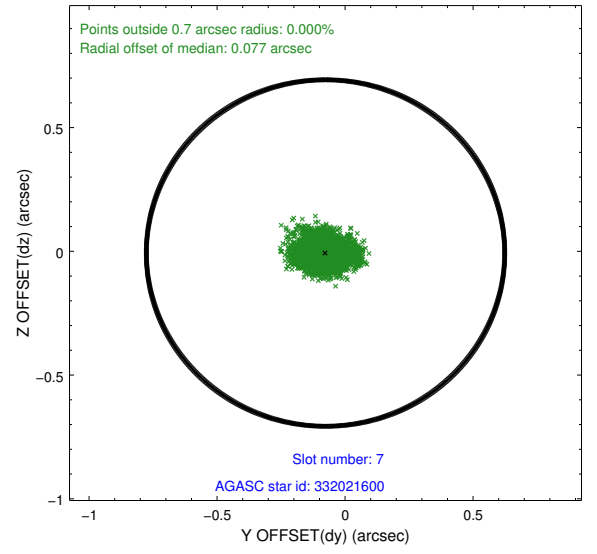
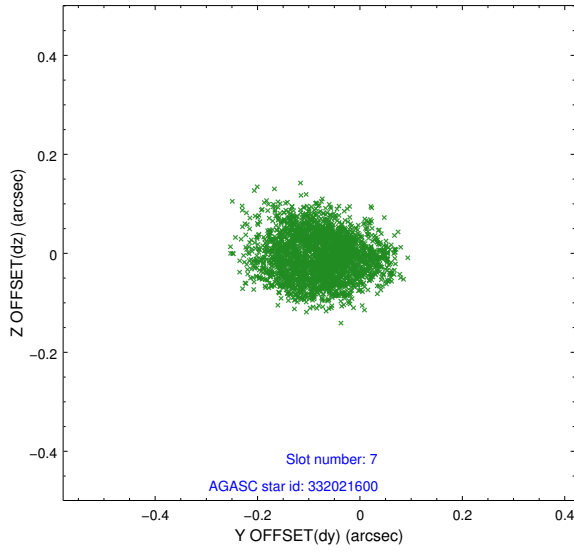
2.4.3 Slot 5



2.4.4 Slot 6

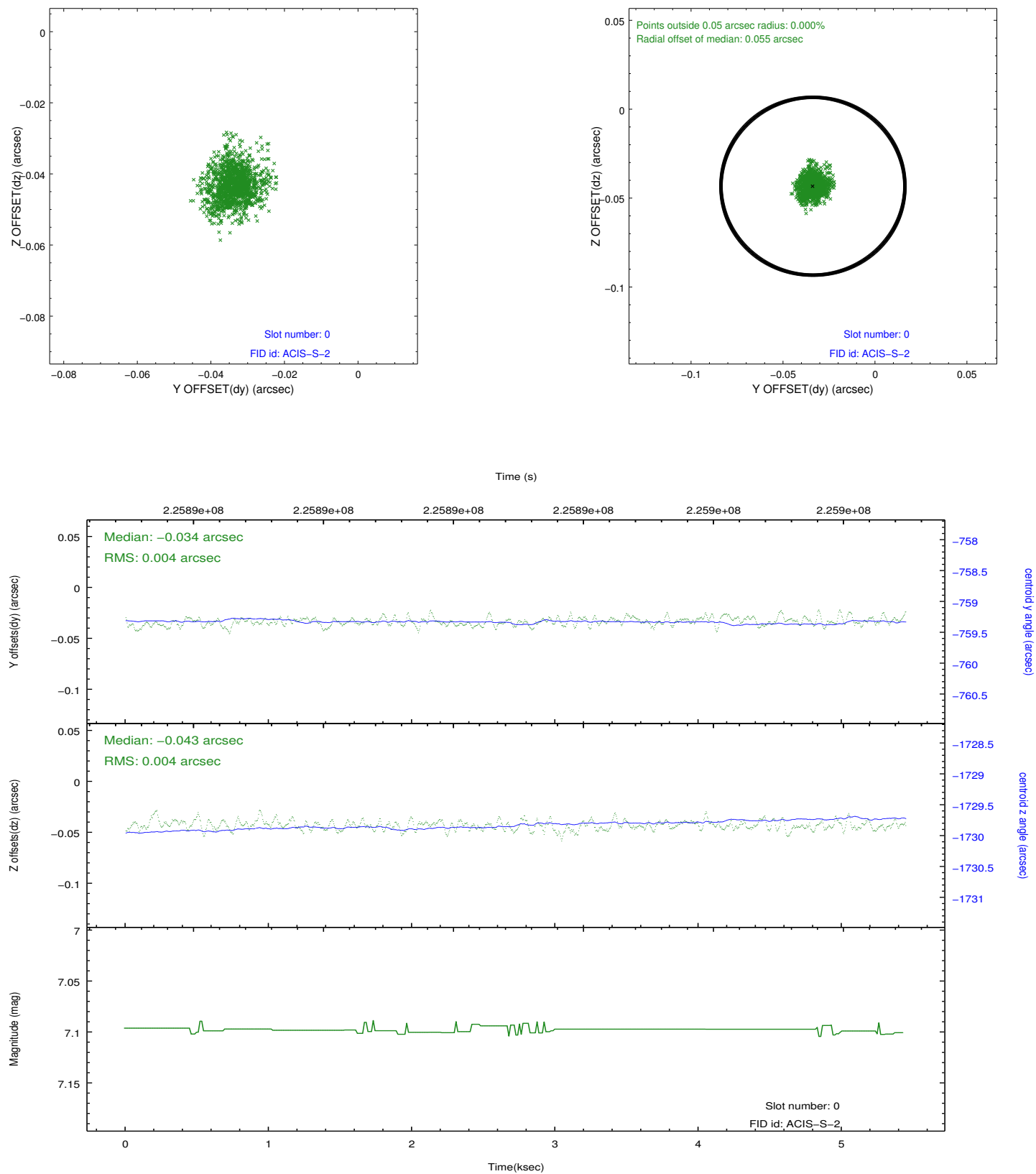


2.4.5 Slot 7

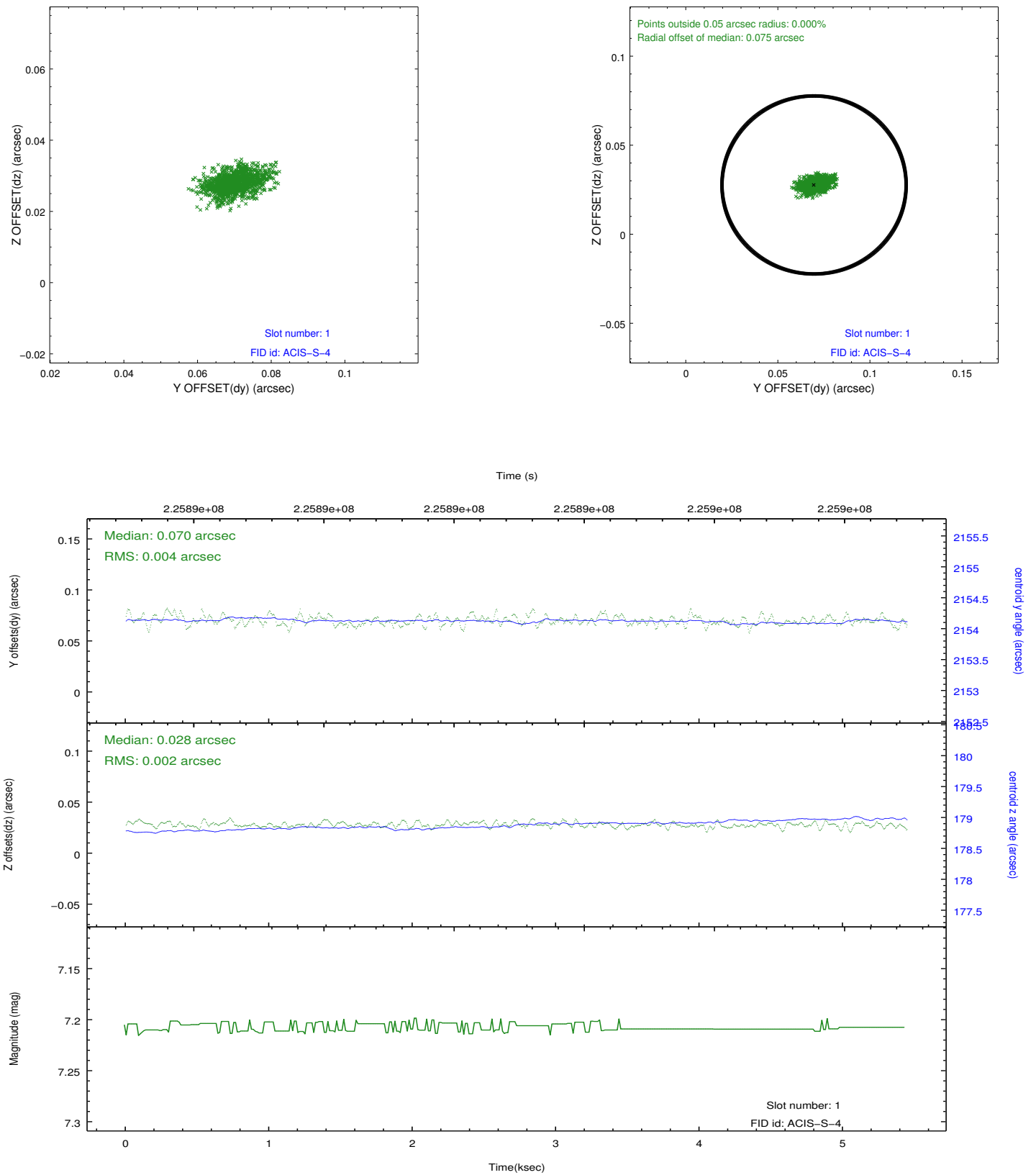


2.5 FID Slots

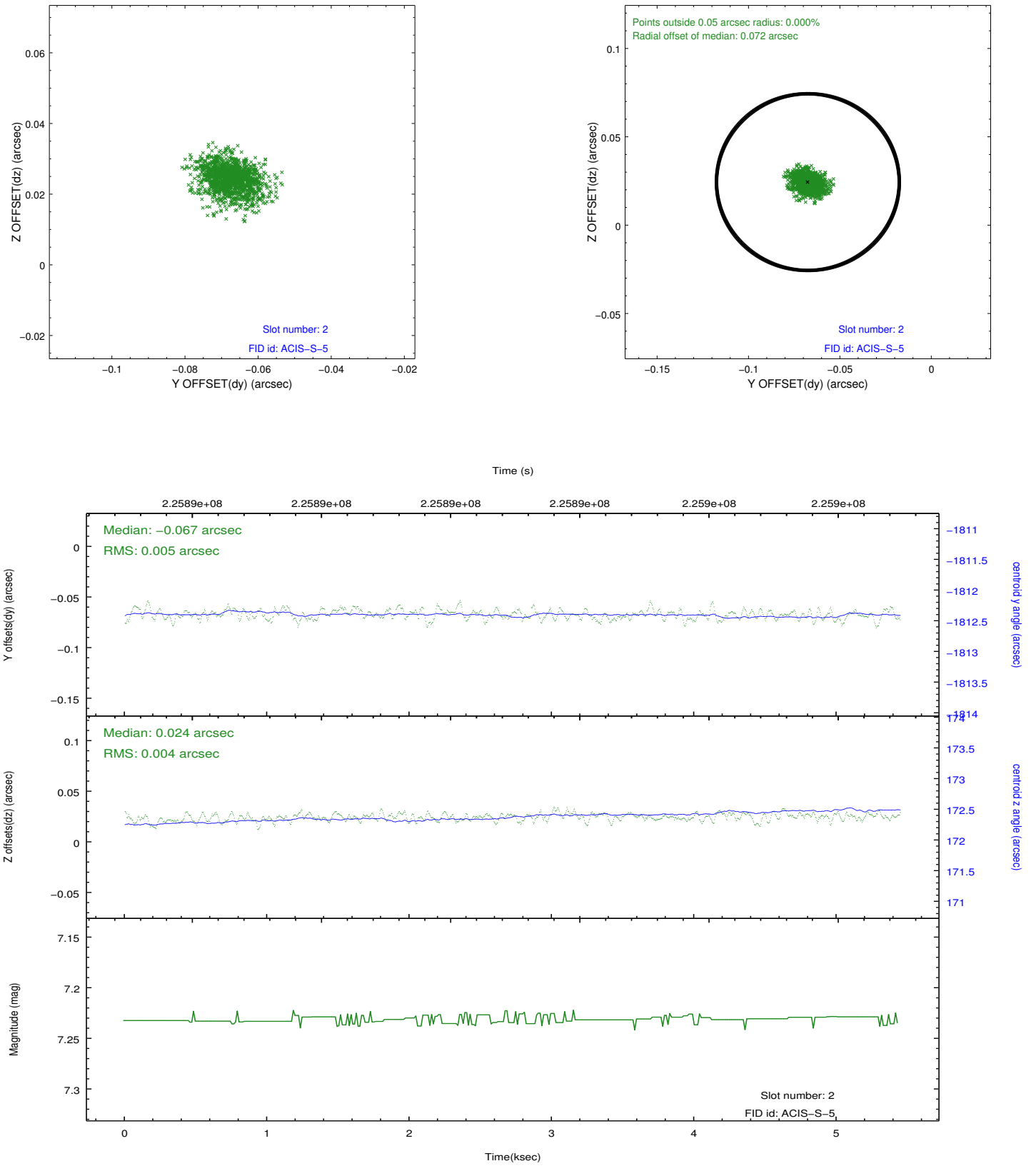
2.5.1 Slot 0



2.5.2 Slot 1



2.5.3 Slot 2



A Summary

A.1 Status

V&V Scientist	Beth Sundheim
V&V Date (YYYY-MM-DD)	2013.01.11
V&V Edition	1
V&V Disposition and Status	OK
V&V Charge Time	5.081599

A.2 Comments

Joint proposal with NOAO.