

V&V Reference Report

L2 ASCDS Version : 8.4.3

Observation 55679 - L2 Version 2
Chandra X-Ray Center

L2 Processing Date : Feb 2 2012

Contents

1	Front	2
2	OBI	3
2.1	OBI	3
2.1.1	Images	3
2.1.2	Bias	3
2.1.3	Parameters	4
2.1.4	Events	4
2.2	Compared Parameters	5
2.3	Star Slots	6
2.4	FID Slots	6
A	Summary	7
A.1	Status	7
A.2	Comments	7

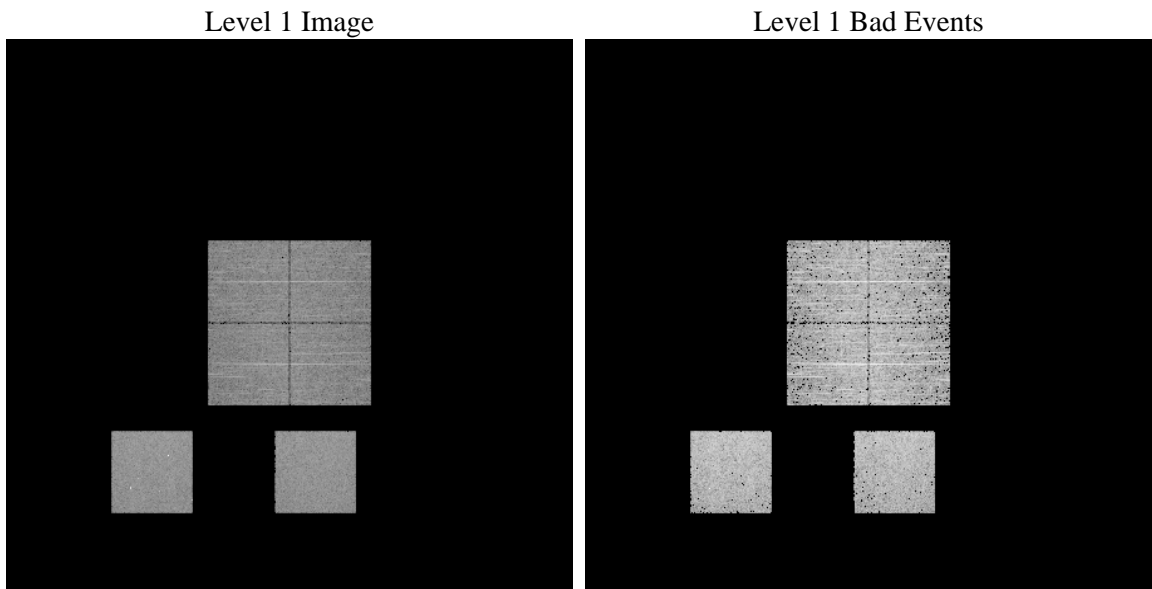
1 Front

seq_num	 	Sequence number
obs_id	55679	Observation id
title	ACIS-012357 diagnostics	Proposal title
observer	CHANDRA engineering request/realtime commanding	Principal investig
object	 	Source name
dtcycle	0	
cycle	P	events from which exps? Prim/Second/Both
ra_targ	0.0	Observer's specified target RA [deg]
dec_targ	0.0	Observer's specified target Dec [deg]
ra_nom	126.02792025499	Nominal RA [deg]
dec_nom	-6.9922244917367	Nominal Dec [deg]
roll_nom	343.07900384017	Nominal Roll [deg]
revision	2	Processing version of data
ontime	3465.5999871492	Sum of GTIs [s]
livetime	3421.7164733782	Livetime [s]
ontime0	3465.5999871492	Sum of GTIs [s]
ontime1	3465.5999871492	Sum of GTIs [s]
ontime2	3465.5999871492	Sum of GTIs [s]
ontime3	3465.5999871492	Sum of GTIs [s]
ontime5	3465.5999871492	Sum of GTIs [s]
ontime7	3465.5999871492	Sum of GTIs [s]
l2events	155850	Number of level 2 events

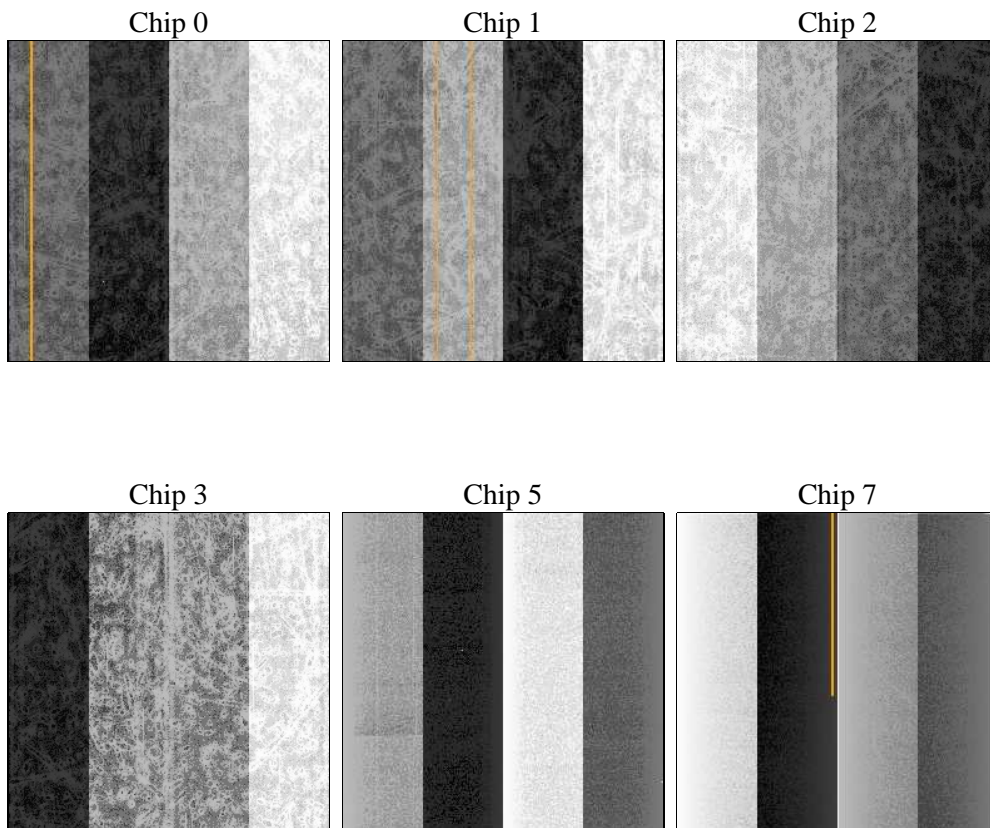
2 OBI

2.1 OBI

2.1.1 Images



2.1.2 Bias



2.1.3 Parameters

obi_num	0	Obi number	sched_exp_time	0.0	[s] Scheduled observation exposure time
ascdsver	8.4.3	Processing system revision	ontime	3465.5999871492	Sum of GTIs [s]
caldsver	4.4.7	 	ontime0	3465.5999871492	Sum of GTIs [s]
date	2012-02-03T02:24:05	Date and time of file creation	ontime1	3465.5999871492	Sum of GTIs [s]
revision	2	Processing version of data	ontime2	3465.5999871492	Sum of GTIs [s]
			ontime3	3465.5999871492	Sum of GTIs [s]
			ontime5	3465.5999871492	Sum of GTIs [s]
			ontime7	3465.5999871492	Sum of GTIs [s]
			l1events	318328	Number of level 1 events

2.1.4 Events

	ccd 0	ccd 1	ccd 2	ccd 3	ccd 5	ccd 7		ccd 0	ccd 1	ccd 2	ccd 3	ccd 5	ccd 7
level 1 events	46918	46052	47864	47833	66207	63454	grade 0 events	11923	11559	12076	12158	5401	6082
rejected events	24212	23447	25446	25443	28040	27102		25%	25%	25%	25%	8%	9%
rejected %	51%	50%	53%	53%	42%	42%	grade 1 events	103	72	96	76	79	56
								0%	0%	0%	0%	0%	0%
							grade 2 events	4204	4314	4059	3847	13615	7712
								8%	9%	8%	8%	20%	12%
							grade 3 events	1509	1506	1546	1532	1558	3262
								3%	3%	3%	3%	2%	5%
							grade 4 events	1566	1572	1389	1538	1518	3314
								3%	3%	2%	3%	2%	5%
							grade 5 events	1634	1563	1456	1720	3637	4236
								3%	3%	3%	3%	5%	6%
							grade 6 events	3533	3674	3366	3337	16123	16027
								7%	7%	7%	6%	24%	25%
							grade 7 events	22446	21792	23876	23625	24276	22765
								47%	47%	49%	49%	36%	35%

2.2 Compared Parameters

Parameter	Planned	Actual	Parameter	Planned	Actual
Instrument	ACIS	ACIS	Obspar format version number	7	7
Detector	ACIS-012357	ACIS-012357	Obspar file type	PREDICTED	ACTUAL
Grating	NONE	NONE	Obspar update status	NONE	UPDATED
Data mode	FAINT	FAINT	Number of optional ACIS chips dropped	0	0
Observation mode	SECONDARY	SECONDARY	On-chip summing requested	N	N
[deg] Pointing RA	0	126.0279202549854	Subarray requested	NONE	NONE
[deg] Pointing Dec	0	-6.992224491736714	Alternating exposures requested	N	N
[deg] Pointing Roll	0.0	343.0790038401674	[s] Primary exposure time	3.2	3.2
[mm] SIM focus pos	-1.429586	-1.428180813131781			
[mm] SIM defocus	0.1037507710433287	0.1051558262725154			
[mm] SIM translation stage pos	250.455976	250.466033080201			
[mm] SIM translation stage offset	0	-0.01005468664627074			
[s] Observation start time (MET)	412872984.996836	412872983.97184			
Observation start date	2011-01-31T14:56:25	2011-01-31T14:56:23			
[s] Observation end time (MET)	412878343.697113	412878342.67212			
Observation end date	2011-01-31T16:25:44	2011-01-31T16:25:42			
Read mode	TIMED	TIMED			

2.3 Star Slots

2.4 FID Slots

A Summary

A.1 Status

V&V Scientist	Joy Nichols
V&V Date (YYYY-MM-DD)	2012.02.03
V&V Edition	1
V&V Disposition and Status	OK
V&V Charge Time	3.4655999871492

A.2 Comments