

V&V Reference Report

L2 ASCDS Version : 10.3.3

Observation 51929 - L2 Version 1
Chandra X-Ray Center

L2 Processing Date : Apr 25 2015

Contents

1	Front	2
2	OBI	3
2.1	OBI	3
2.1.1	Images	3
2.1.2	Bias	3
2.1.3	Parameters	4
2.1.4	Events	4
2.2	Compared Parameters	5
2.3	Star Slots	6
2.4	FID Slots	6
A	Summary	7
A.1	Status	7
A.2	Comments	7

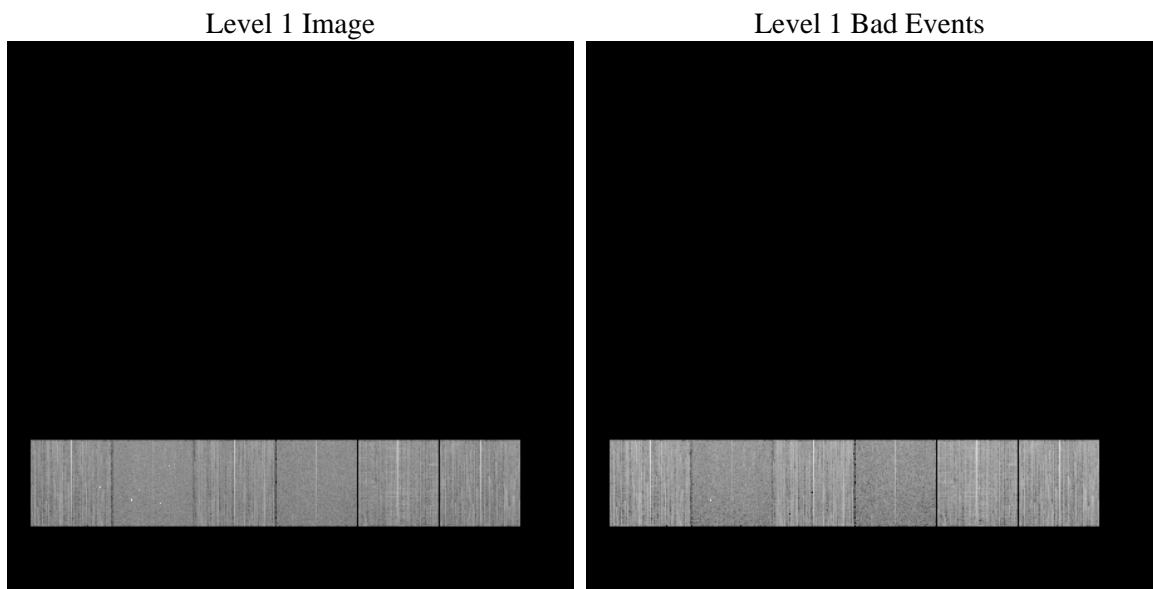
1 Front

seq_num	 	Sequence number
obs_id	51929	Observation id
title	ACIS-456789 diagnostics	Proposal title
observer	CHANDRA engineering request/realtime commanding	Principal investig
object	 	Source name
dtcycle	0	
cycle	P	events from which exps? Prim/Second/Both
ra_targ	0.0	Observer's specified target RA [deg]
dec_targ	0.0	Observer's specified target Dec [deg]
ra_nom	87.692911677023	Nominal RA [deg]
dec_nom	-75.628838114751	Nominal Dec [deg]
roll_nom	233.79535449953	Nominal Roll [deg]
revision	1	Processing version of data
ontime	8460.8001260757	Sum of GTIs [s]
livetime	8353.6643803972	Livetime [s]
ontime4	8460.8001260757	Sum of GTIs [s]
ontime5	8460.8001260757	Sum of GTIs [s]
ontime6	8460.8001260757	Sum of GTIs [s]
ontime7	8460.8001260757	Sum of GTIs [s]
ontime8	8460.8001260757	Sum of GTIs [s]
ontime9	8460.8001260757	Sum of GTIs [s]
l2events	181491	Number of level 2 events

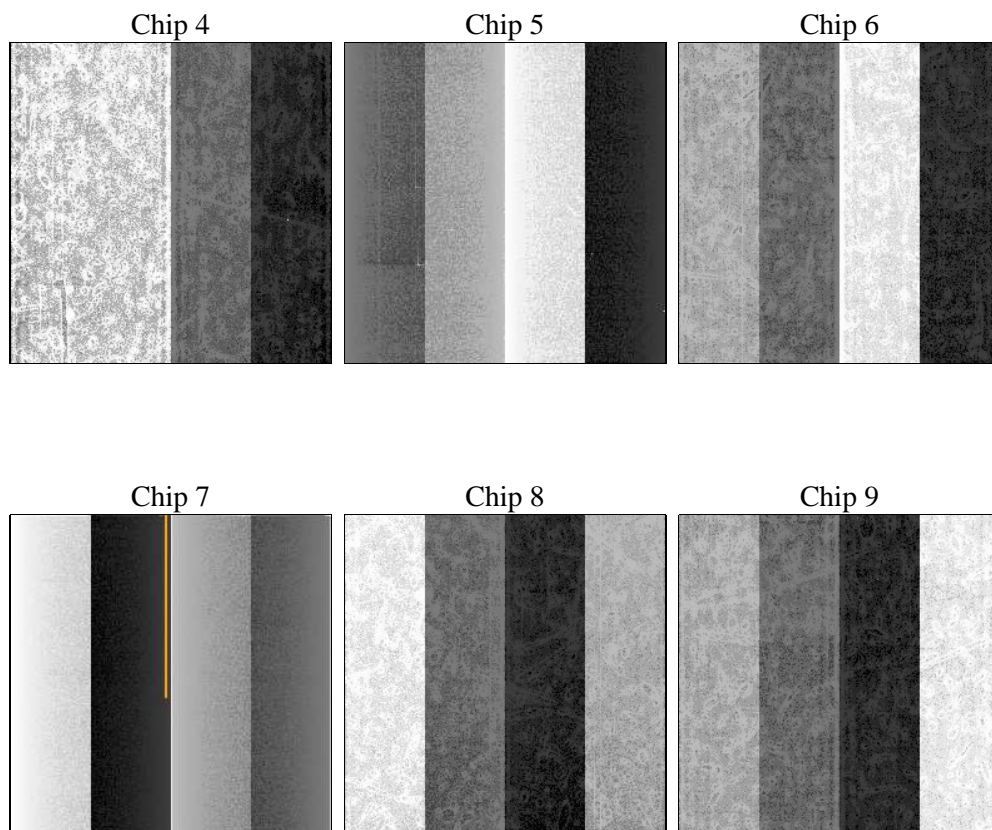
2 OBI

2.1 OBI

2.1.1 Images



2.1.2 Bias



2.1.3 Parameters

obi_num	0	Obi number	sched_exp_time	0.0	[s] Scheduled observation exposure time
ascdsver	10.3.3	Processing system revision	ontime	8460.8001260757	Sum of GTIs [s]
caldsver	4.6.7	 	ontime4	8460.8001260757	Sum of GTIs [s]
date	2015-04-25T14:43:29	Date and time of file creation	ontime5	8460.8001260757	Sum of GTIs [s]
revision	1	Processing version of data	ontime6	8460.8001260757	Sum of GTIs [s]
			ontime7	8460.8001260757	Sum of GTIs [s]
			ontime8	8460.8001260757	Sum of GTIs [s]
			ontime9	8460.8001260757	Sum of GTIs [s]
			l1events	800726	Number of level 1 events

2.1.4 Events

	ccd 4	ccd 5	ccd 6	ccd 7	ccd 8	ccd 9		ccd 4	ccd 5	ccd 6	ccd 7	ccd 8	ccd 9
level 1 events	138841	123750	139659	111649	147130	139697	grade 0 events	12961	5670	11419	6128	13788	11107
rejected events	114958	70196	115840	63946	114777	116703		9%	4%	8%	5%	9%	7%
rejected %	82%	56%	82%	57%	78%	83%	grade 1 events	90	138	65	77	85	62
								0%	0%	0%	0%	0%	0%
							grade 2 events	4429	19828	4945	11671	6796	4668
								3%	16%	3%	10%	4%	3%
							grade 3 events	1711	1755	1600	3878	2623	1639
								1%	1%	1%	3%	1%	1%
							grade 4 events	1576	1713	1618	3801	2552	1551
								1%	1%	1%	3%	1%	1%
							grade 5 events	2989	5954	2991	7040	3863	3229
								2%	4%	2%	6%	2%	2%
							grade 6 events	3206	24588	4237	22225	6594	4029
								2%	19%	3%	19%	4%	2%
							grade 7 events	111879	64104	112784	56829	110829	113412
								80%	51%	80%	50%	75%	81%

2.2 Compared Parameters

Parameter	Planned	Actual	Parameter	Planned	Actual
Instrument	ACIS	ACIS	Obspar format version number	7	7
Detector	ACIS-456789	ACIS-456789	Obspar file type	PREDICTED	ACTUAL
Grating	NONE	NONE	Obspar update status	NONE	UPDATED
Data mode	FAINT	FAINT	Number of optional ACIS chips dropped	0	0
Observation mode	SECONDARY	SECONDARY	On-chip summing requested	N	N
[deg] Pointing RA	0	87.69291167702254	Subarray requested	NONE	NONE
[deg] Pointing Dec	0	-75.62883811475072	Alternating exposures requested	N	N
[deg] Pointing Roll	0.0	233.7953544995323	[s] Primary exposure time	3.2	3.2
[mm] SIM focus pos	-1.429586	-1.428180813131781			
[mm] SIM defocus	0.1037507710433287	0.1051558262725154			
[mm] SIM translation stage pos	250.455976	250.466033080201			
[mm] SIM translation stage offset	0	-0.01005468664627074			
[s] Observation start time (MET)	546320524.490932	546320523.46593			
Observation start date	2015-04-25T03:42:04	2015-04-25T03:42:03			
[s] Observation end time (MET)	546330704.791502	546330703.7665			
Observation end date	2015-04-25T06:31:45	2015-04-25T06:31:43			
Read mode	TIMED	TIMED			

2.3 Star Slots

2.4 FID Slots

A Summary

A.1 Status

V&V Scientist	Joy Nichols
V&V Date (YYYY-MM-DD)	2015.04.27
V&V Edition	1
V&V Disposition and Status	OK
V&V Charge Time	8.4608001260757

A.2 Comments

chip 4 weird?