

V&V Reference Report

L2 ASCDS Version : 8.4.5

Observation 5129 - L2 Version 3
Chandra X-Ray Center

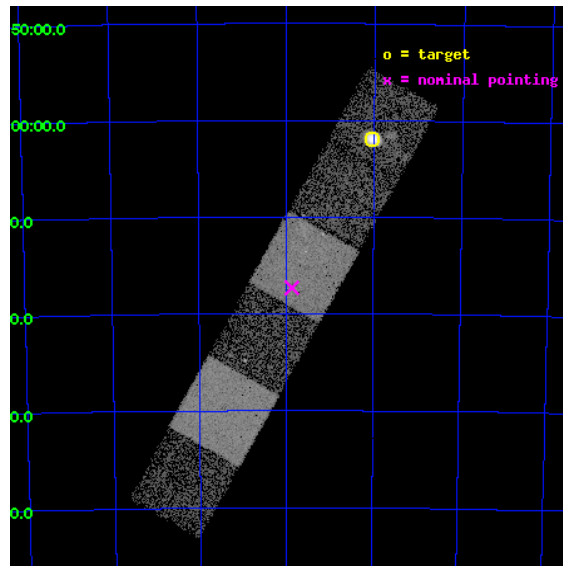
L2 Processing Date : Nov 9 2012

Contents

1	Front	2
2	OBI	3
2.1	OBI	3
2.1.1	Images	3
2.1.2	Bias	3
2.1.3	Parameters	4
2.1.4	Events	4
2.2	Compared Parameters	5
2.3	Aspect	6
2.4	Star Slots	9
2.4.1	Slot 3	9
2.4.2	Slot 4	10
2.4.3	Slot 5	11
2.4.4	Slot 6	12
2.4.5	Slot 7	13
2.5	FID Slots	14
2.5.1	Slot 0	14
2.5.2	Slot 1	15
2.5.3	Slot 2	16
A	Summary	17
A.1	Status	17
A.2	Comments	17

1 Front

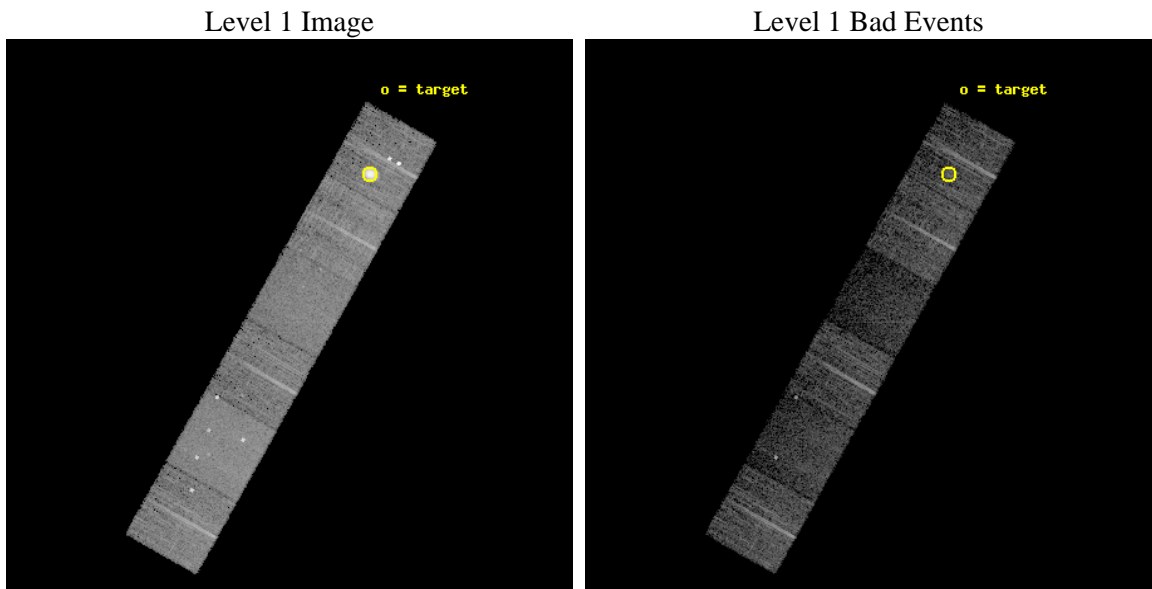
seq_num	590327	Sequence number
obs_id	5129	Observation id
title	AO5A ACIS-S Calibration Observations of E0102-72	Proposal title
observer	Dr. CXC Calibration	Principal investigator
object	E0102-72[S5,-120,-17.29,0,0]	Source name
dtcycle	0	
cycle	P	events from which exps? Prim/Second/Both
ra_targ	16.01	Observer's specified target RA [deg]
dec_targ	-72.032028	Observer's specified target Dec [deg]
ra_nom	16.466952238023	Nominal RA [deg]
dec_nom	-72.288465816153	Nominal Dec [deg]
roll_nom	299.33374840731	Nominal Roll [deg]
revision	3	Processing version of data
ontime	8009.5999701619	Sum of GTIs [s]
livetime	7908.1775925376	Livetime [s]
ontime4	8009.5999701619	Sum of GTIs [s]
ontime5	8009.5999701619	Sum of GTIs [s]
ontime6	8009.5999701619	Sum of GTIs [s]
ontime7	8009.5999701619	Sum of GTIs [s]
ontime8	8006.3589998782	Sum of GTIs [s]
ontime9	8009.5999701619	Sum of GTIs [s]
l2events	86007	Number of level 2 events



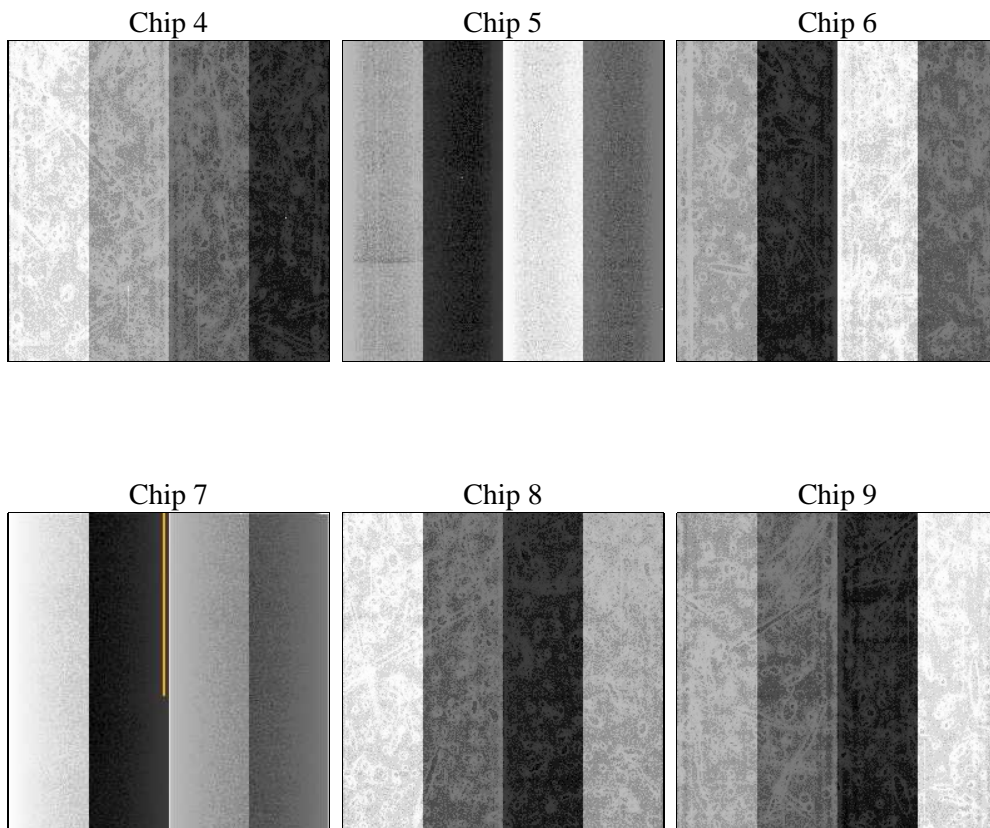
2 OBI

2.1 OBI

2.1.1 Images



2.1.2 Bias



2.1.3 Parameters

obi_num	0	Obi number	sched_exp_time	8250.000000	[s] Scheduled observation exposure time
ascdsver	8.4.5	Processing system revision	ontime	8009.5999701619	Sum of GTIs [s]
caldbver	4.5.2	 	ontime4	8009.5999701619	Sum of GTIs [s]
date	2012-11-09T07:42:52	Date and time of file creation	ontime5	8009.5999701619	Sum of GTIs [s]
revision	3	Processing version of data	ontime6	8009.5999701619	Sum of GTIs [s]
			ontime7	8009.5999701619	Sum of GTIs [s]
			ontime8	8006.3589998782	Sum of GTIs [s]
			ontime9	8009.5999701619	Sum of GTIs [s]
			l1events	293122	Number of level 1 events

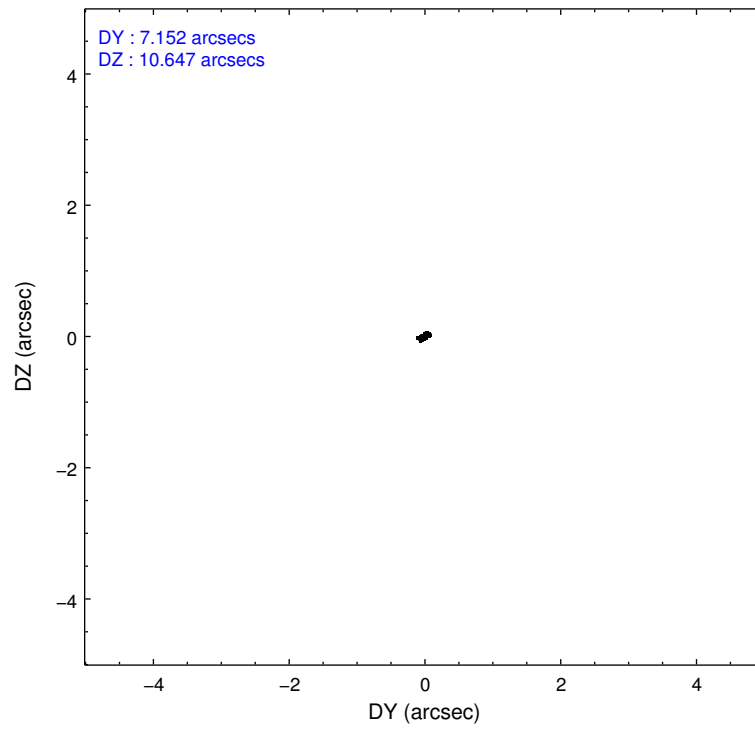
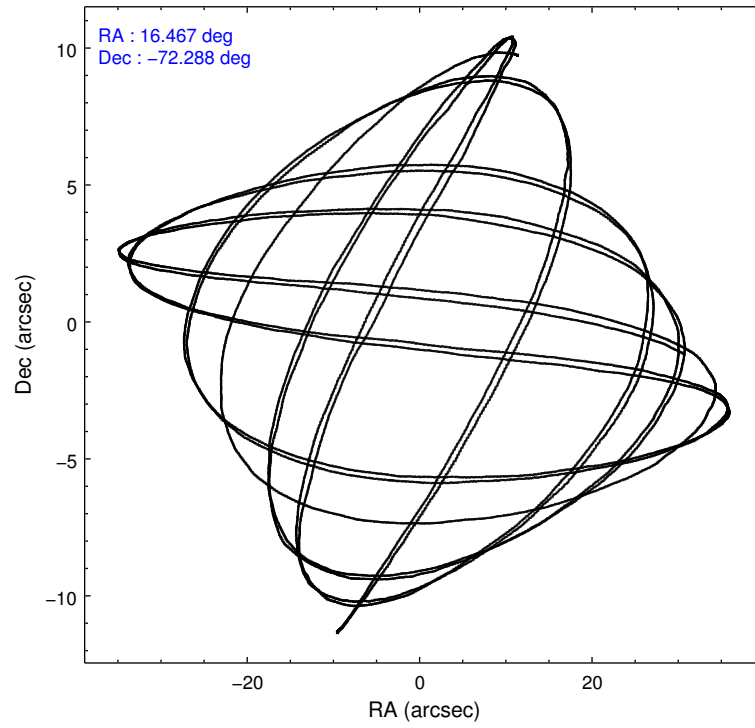
2.1.4 Events

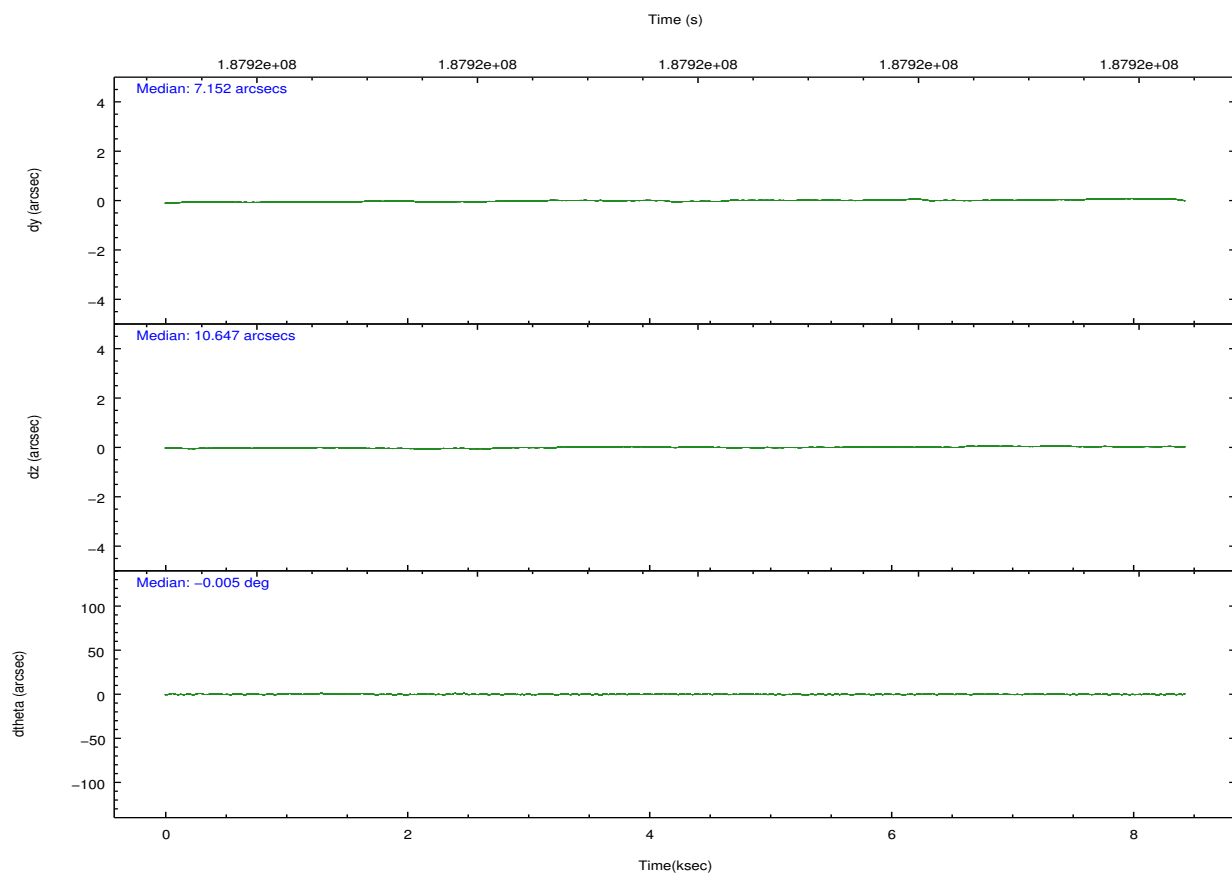
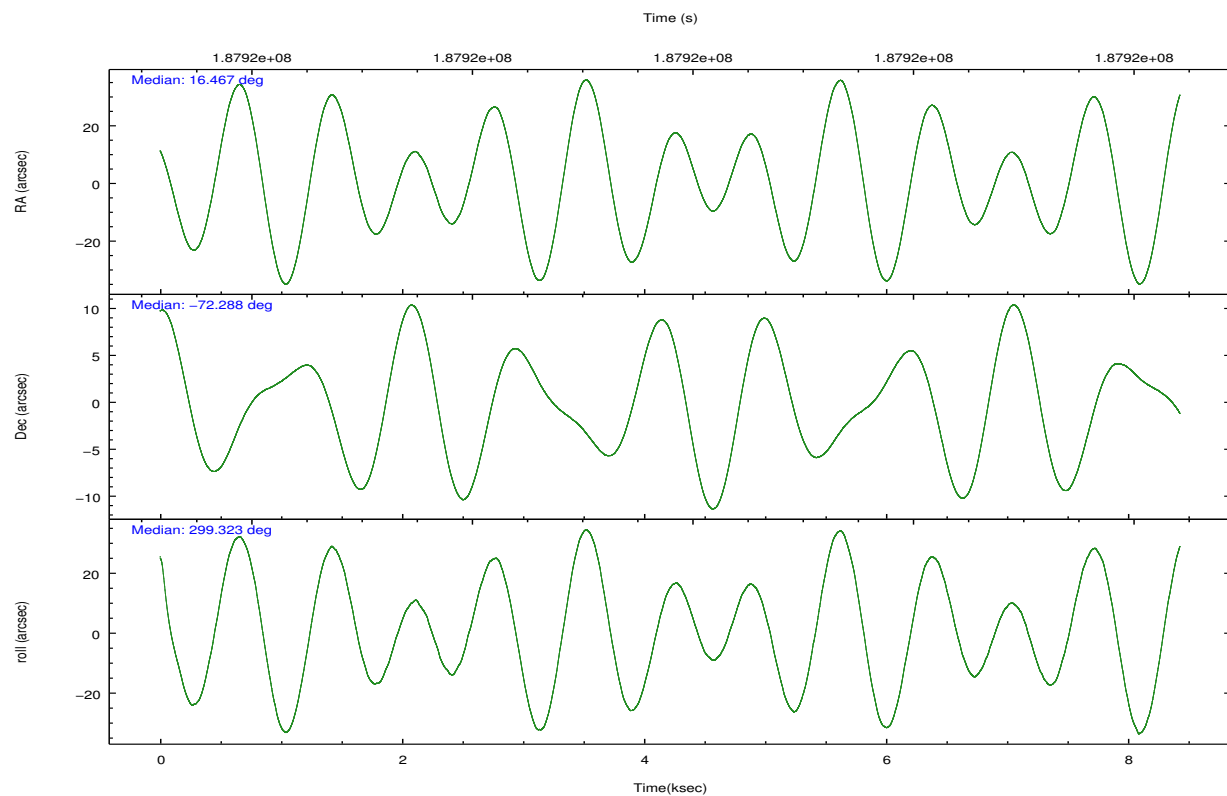
	ccd 4	ccd 5	ccd 6	ccd 7	ccd 8	ccd 9		ccd 4	ccd 5	ccd 6	ccd 7	ccd 8	ccd 9
level 1 events	44527	55154	37226	40882	48785	66548	grade 0 events	3196	5939	1877	2762	3610	28005
rejected events	38932	23016	32842	17551	37214	33949		7%	10%	5%	6%	7%	42%
rejected %	87%	41%	88%	42%	76%	51%	grade 1 events	37	618	22	22	30	126
								0%	1%	0%	0%	0%	0%
							grade 2 events	924	8728	873	4688	2485	2242
								2%	15%	2%	11%	5%	3%
							grade 3 events	429	1697	415	2176	1252	737
								0%	3%	1%	5%	2%	1%
							grade 4 events	440	1649	413	2163	1116	740
								0%	2%	1%	5%	2%	1%
							grade 5 events	1233	4241	1336	3826	1931	1464
								2%	7%	3%	9%	3%	2%
							grade 6 events	606	14125	806	11542	3108	894
								1%	25%	2%	28%	6%	1%
							grade 7 events	37662	18157	31484	13703	35253	32340
								84%	32%	84%	33%	72%	48%

2.2 Compared Parameters

Parameter	Planned	Actual	Parameter	Planned	Actual
Instrument	ACIS	ACIS	Obspar format version number	7	7
Detector	ACIS-456789	ACIS-456789	Obspar file type	PREDICTED	ACTUAL
Grating	NONE	NONE	Obspar update status	NONE	UPDATED
Data mode	VFAINT	VFAINT	Number of optional ACIS chips dropped	0	0
Observation mode	POINTING	POINTING	On-chip summing requested	N	N
[deg] Pointing RA	16.389495	16.46695223802346	Subarray requested	NONE	NONE
[deg] Pointing Dec	-72.274914	-72.28846581615252	Alternating exposures requested	N	N
[deg] Pointing Roll	299.103344	299.3337484073136	[s] Primary exposure time	0.000000	3.2
[s] Window start time (MET)	181353664.184000	181353664.184000			
[s] Window stop time (MET)	189216064.184000	189216064.184000			
[mm] SIM focus pos	-0.684267	-0.6828225247311905			
[mm] SIM defocus	0	0.001444936568705701			
[mm] SIM translation stage pos	-190.132523	-190.1400660498719			
[mm] SIM translation stage offset	0	0.00754346686406393			
[s] Observation start time (MET)	187915758.184000	187915382.93765			
Observation start date	2003-12-15T22:48:14	2003-12-15T22:43:02			
[s] Observation end time (MET)	187924008.184000	187924142.58803			
Observation end date	2003-12-16T01:05:44	2003-12-16T01:09:02			
Read mode	TIMED	TIMED			

2.3 Aspect



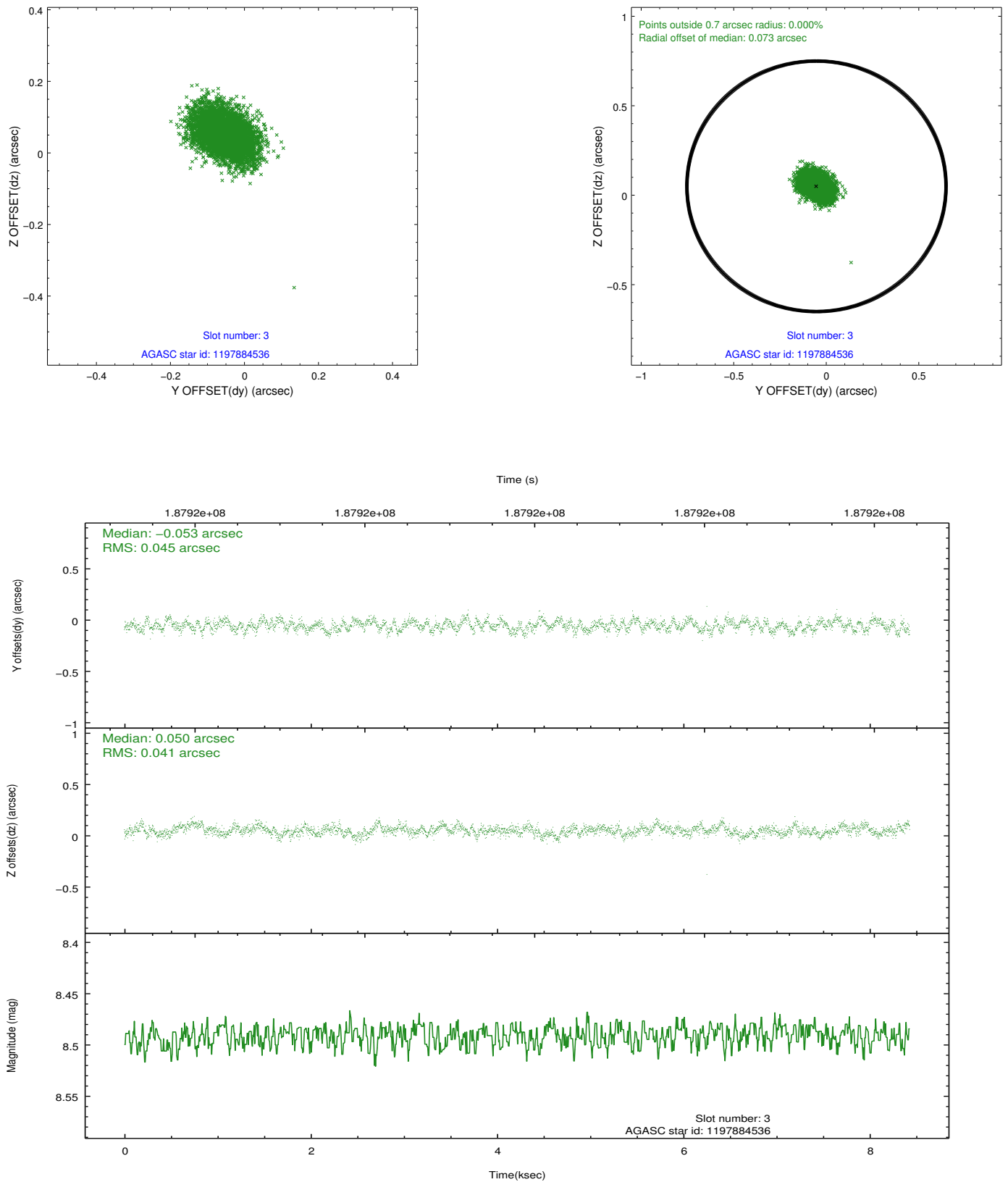


Slot Statistics

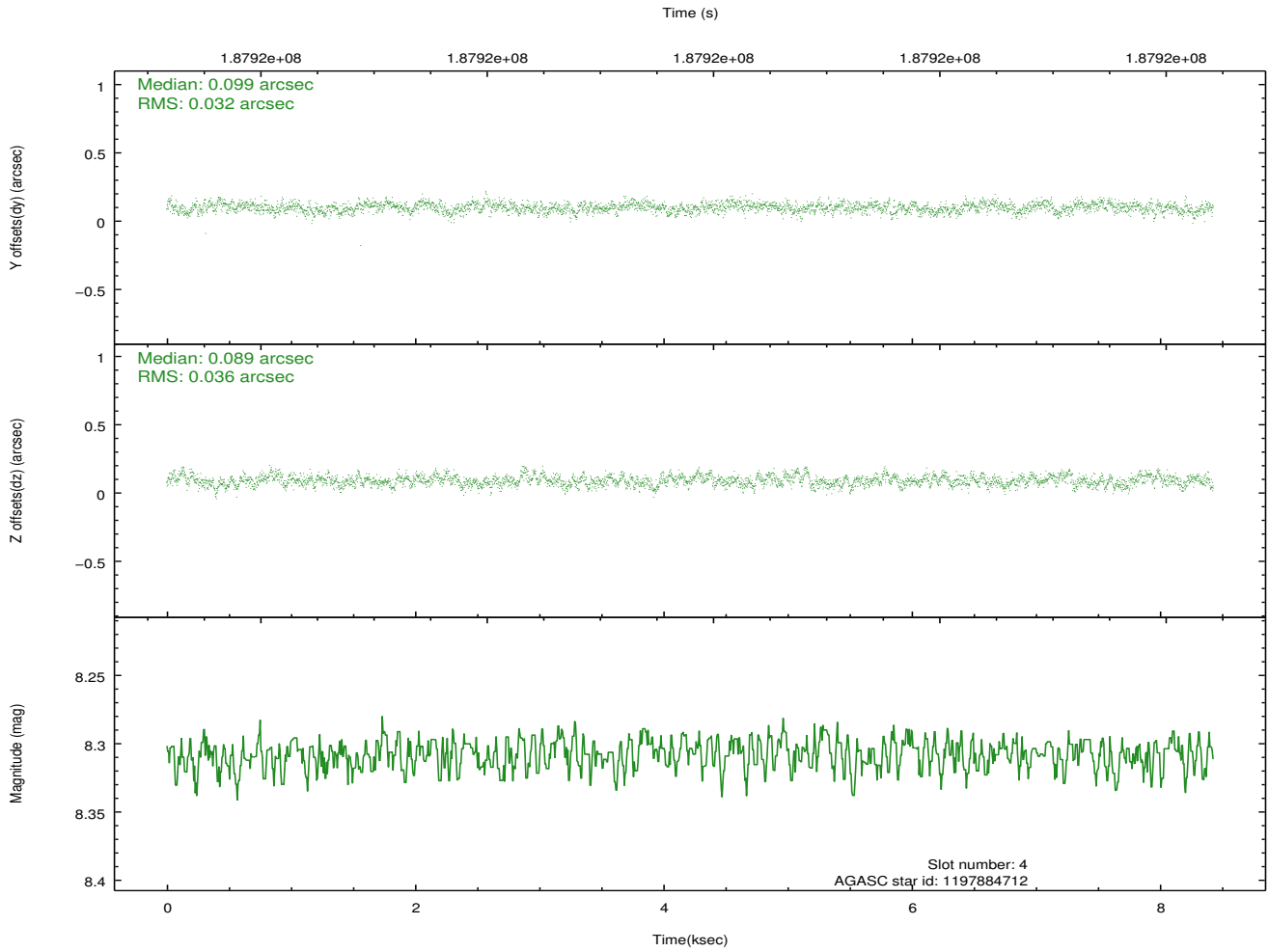
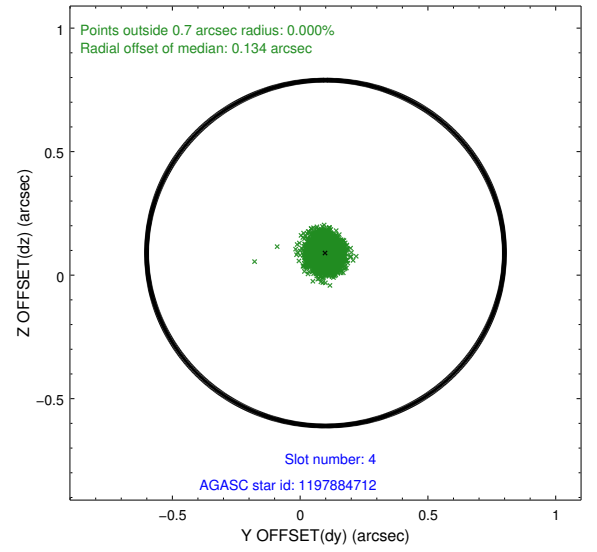
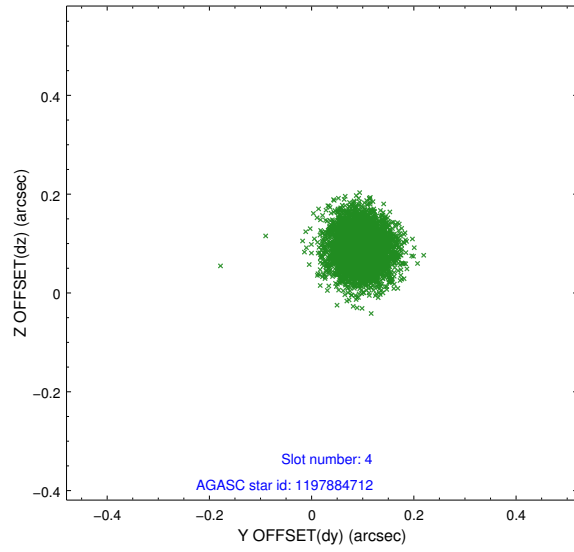
slot	status	id	mag	n_pts	med_dy	med_dz	dr1	dr2	ra	dec	mean_y	mean_z
0	FID	ACIS-S-2	7.10	2056	-0.040	-0.000	0.006	0.011	0.000000	0.000000	-759.91	-1731.92
1	FID	ACIS-S-4	7.20	2055	0.050	0.020	0.006	0.010	0.000000	0.000000	2153.13	175.95
2	FID	ACIS-S-5	7.23	2056	-0.040	-0.011	0.007	0.012	0.000000	0.000000	-1811.93	170.27
3	GUIDE	1197884536	8.49	4113	-0.053	0.050	0.065	0.106	17.160729	-71.835289	-956.90	1523.48
4	GUIDE	1197884712	8.31	4113	0.099	0.089	0.052	0.082	16.087398	-72.252690	-230.04	-250.47
5	GUIDE	1197885104	9.34	4111	0.086	-0.047	0.109	0.190	17.845067	-72.189368	527.70	1540.62
6	GUIDE	1197885328	7.22	4113	-0.056	-0.106	0.051	0.081	16.283090	-71.733943	-1759.53	842.95
7	GUIDE	1198189696	7.37	4112	-0.072	0.011	0.053	0.085	15.223750	-72.697522	733.19	-1835.76

2.4 Star Slots

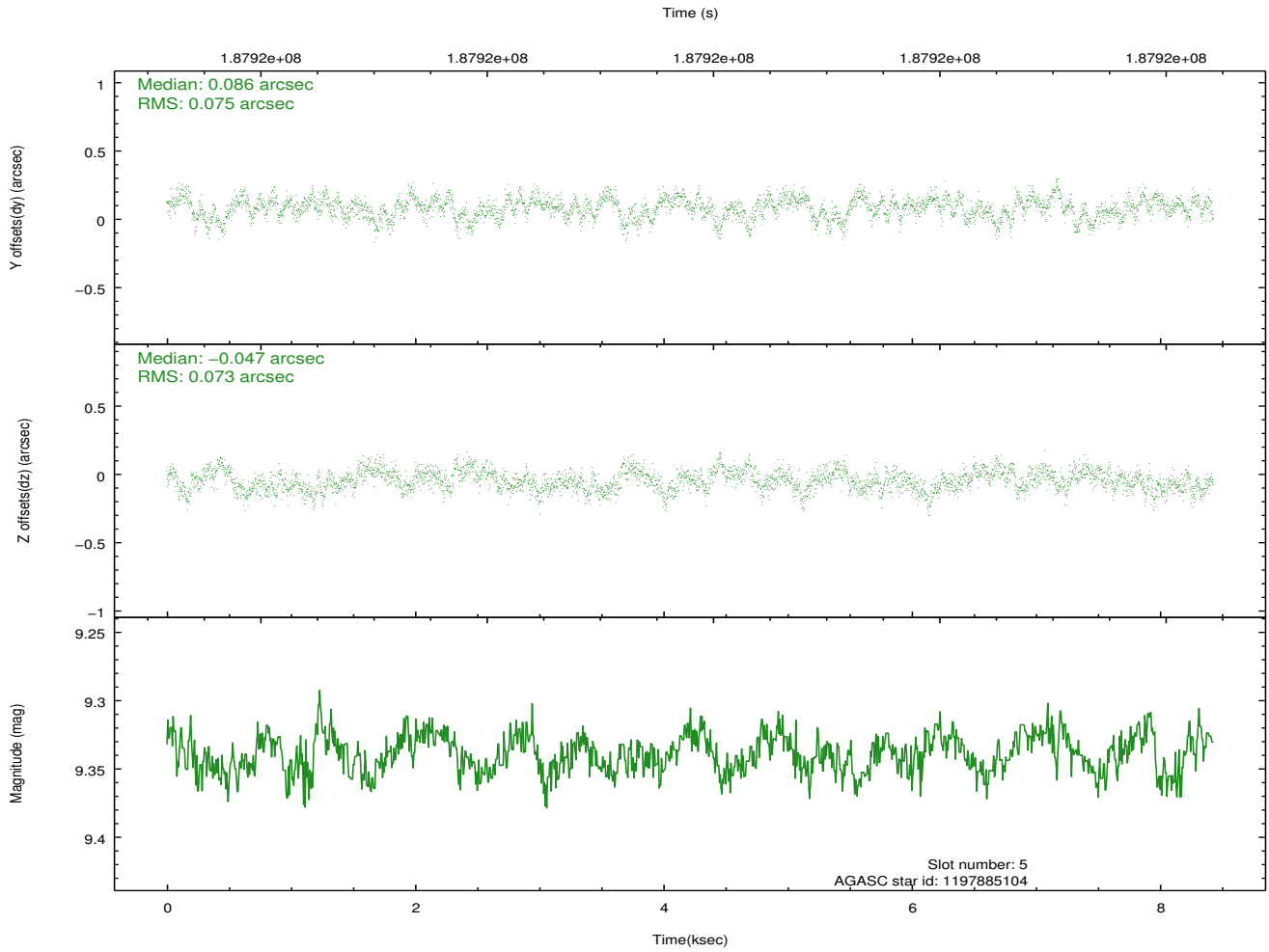
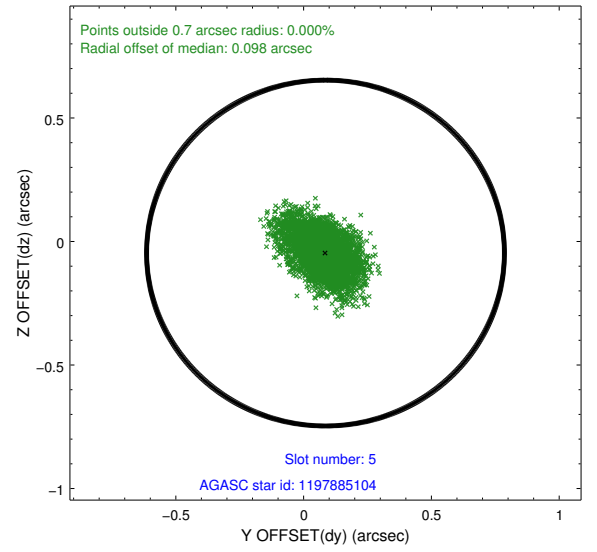
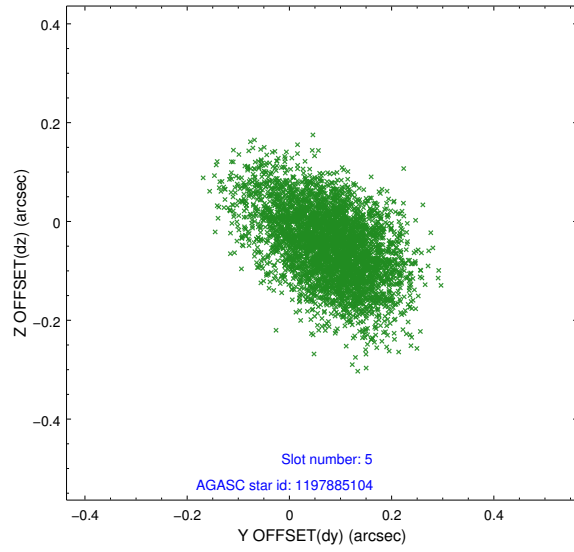
2.4.1 Slot 3



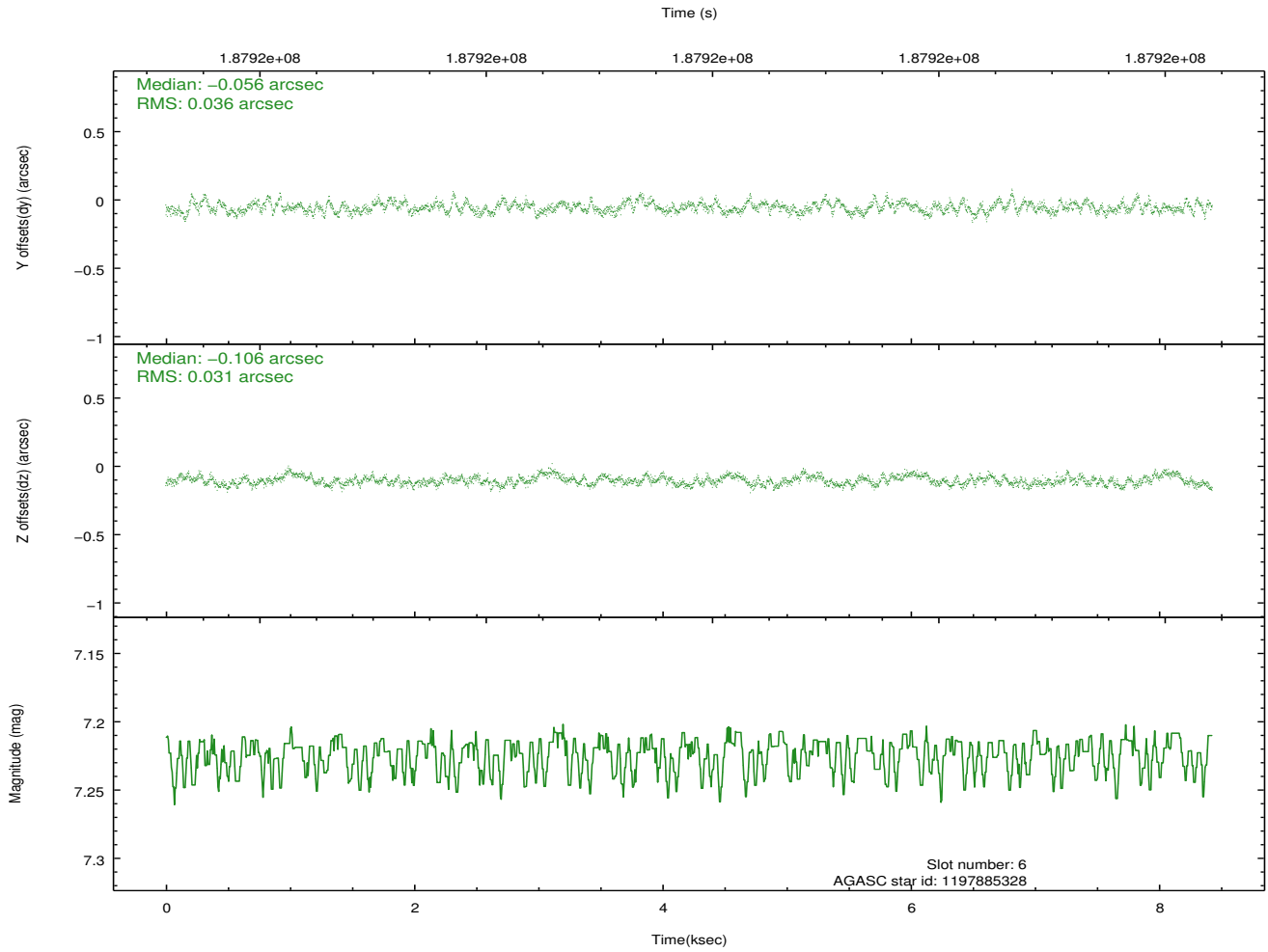
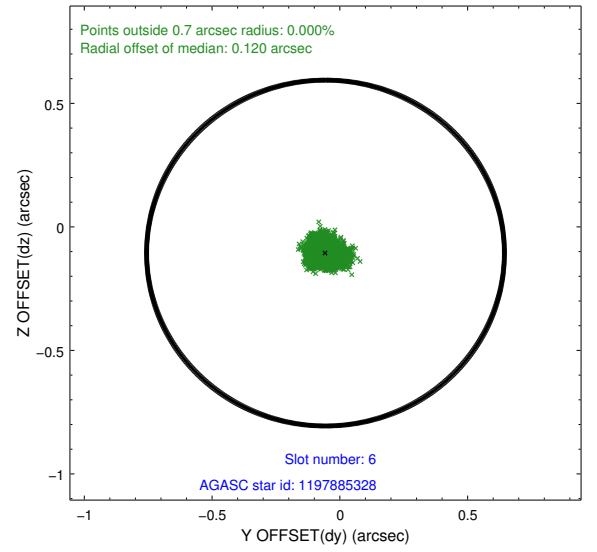
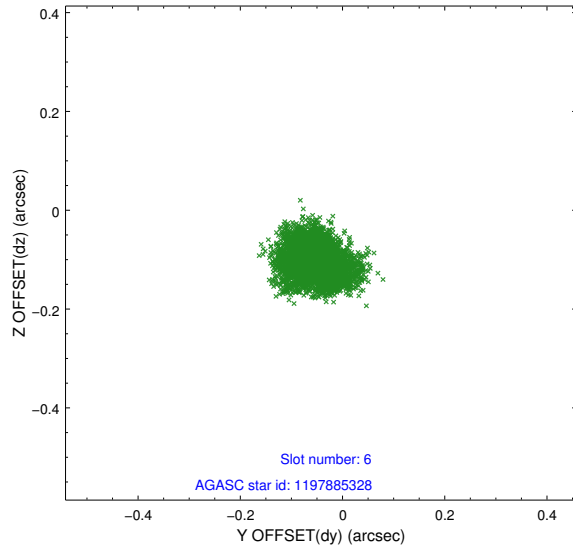
2.4.2 Slot 4



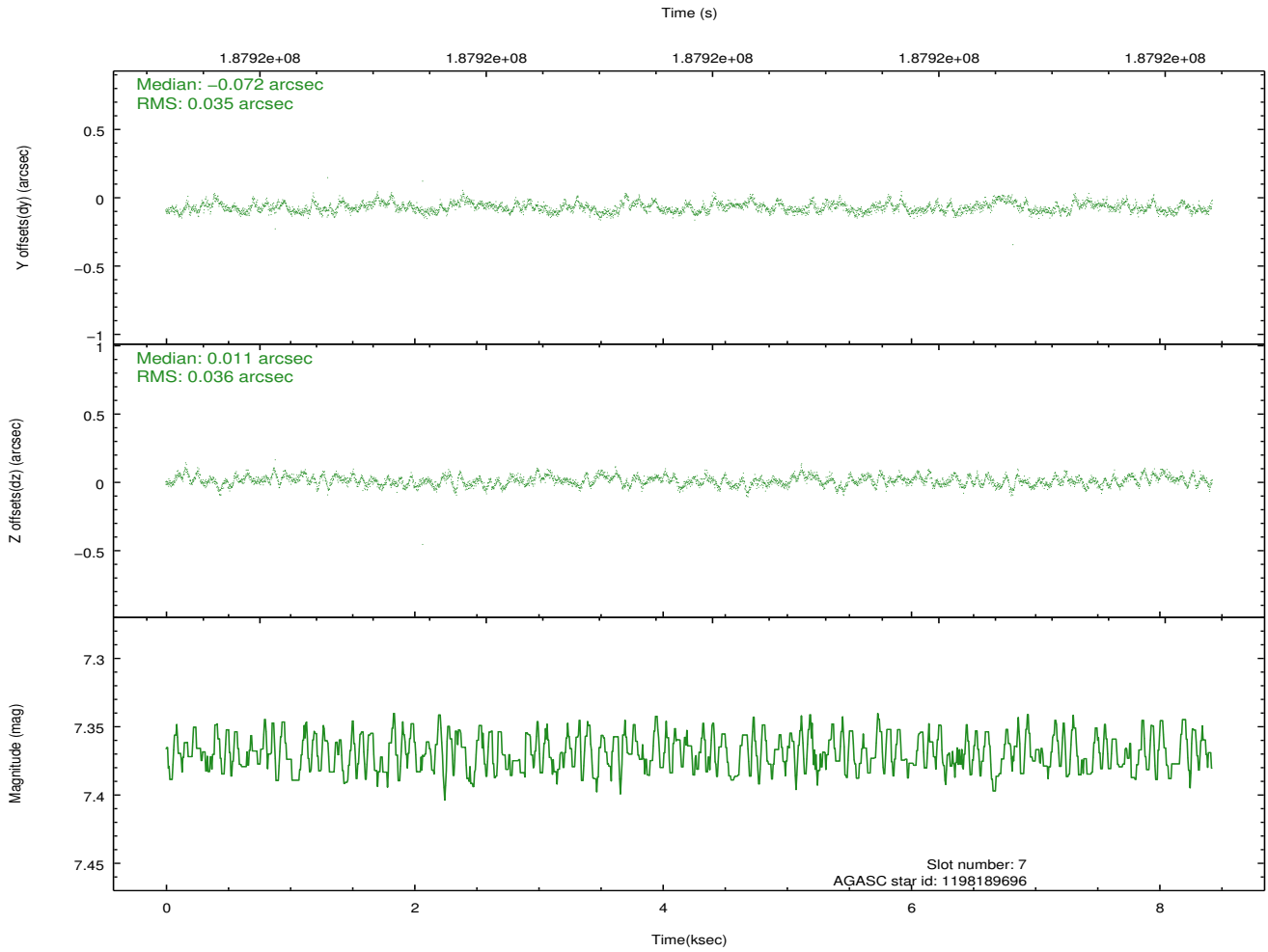
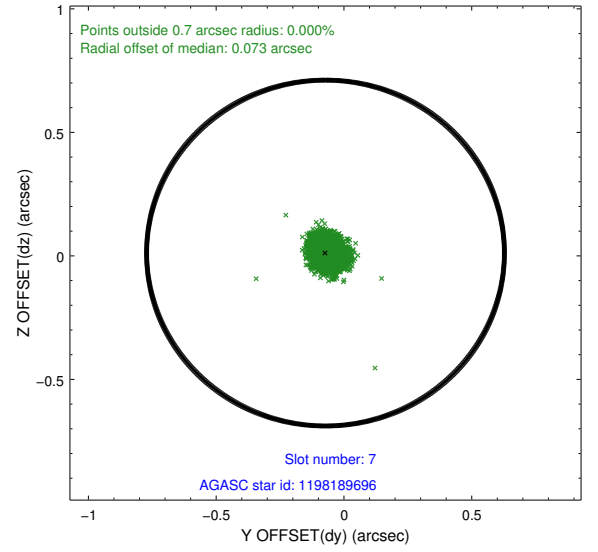
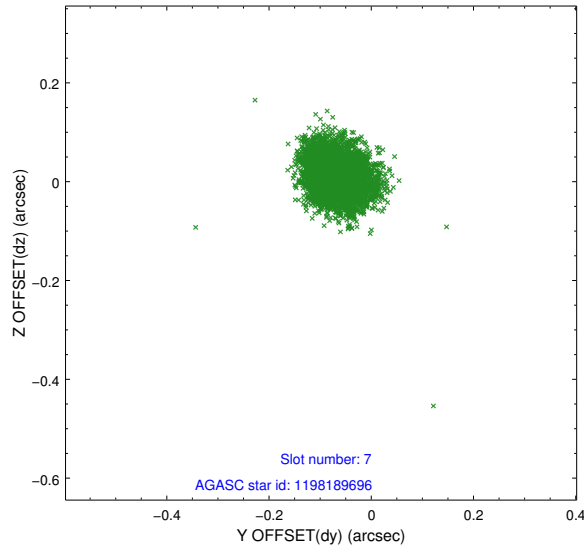
2.4.3 Slot 5



2.4.4 Slot 6

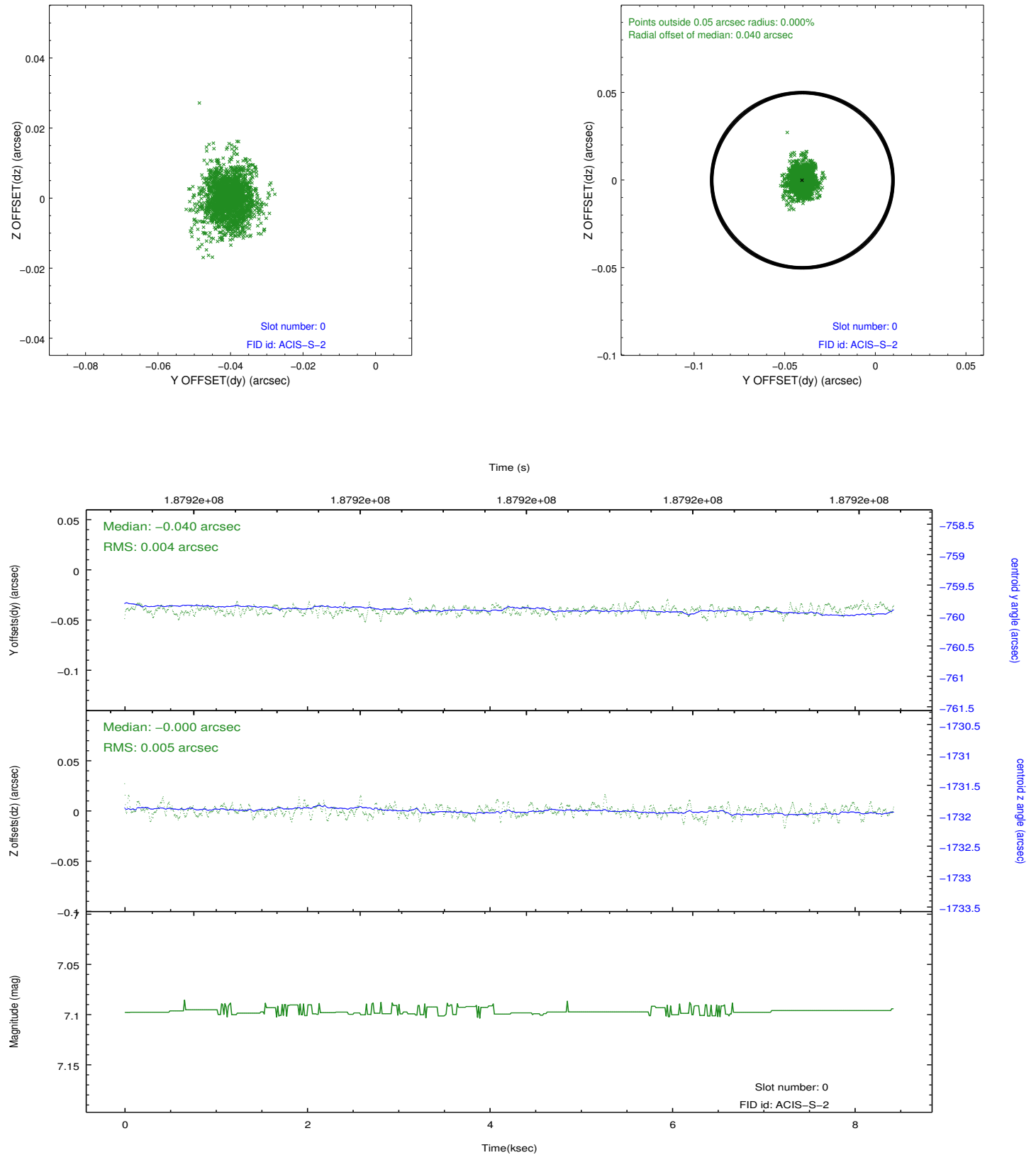


2.4.5 Slot 7

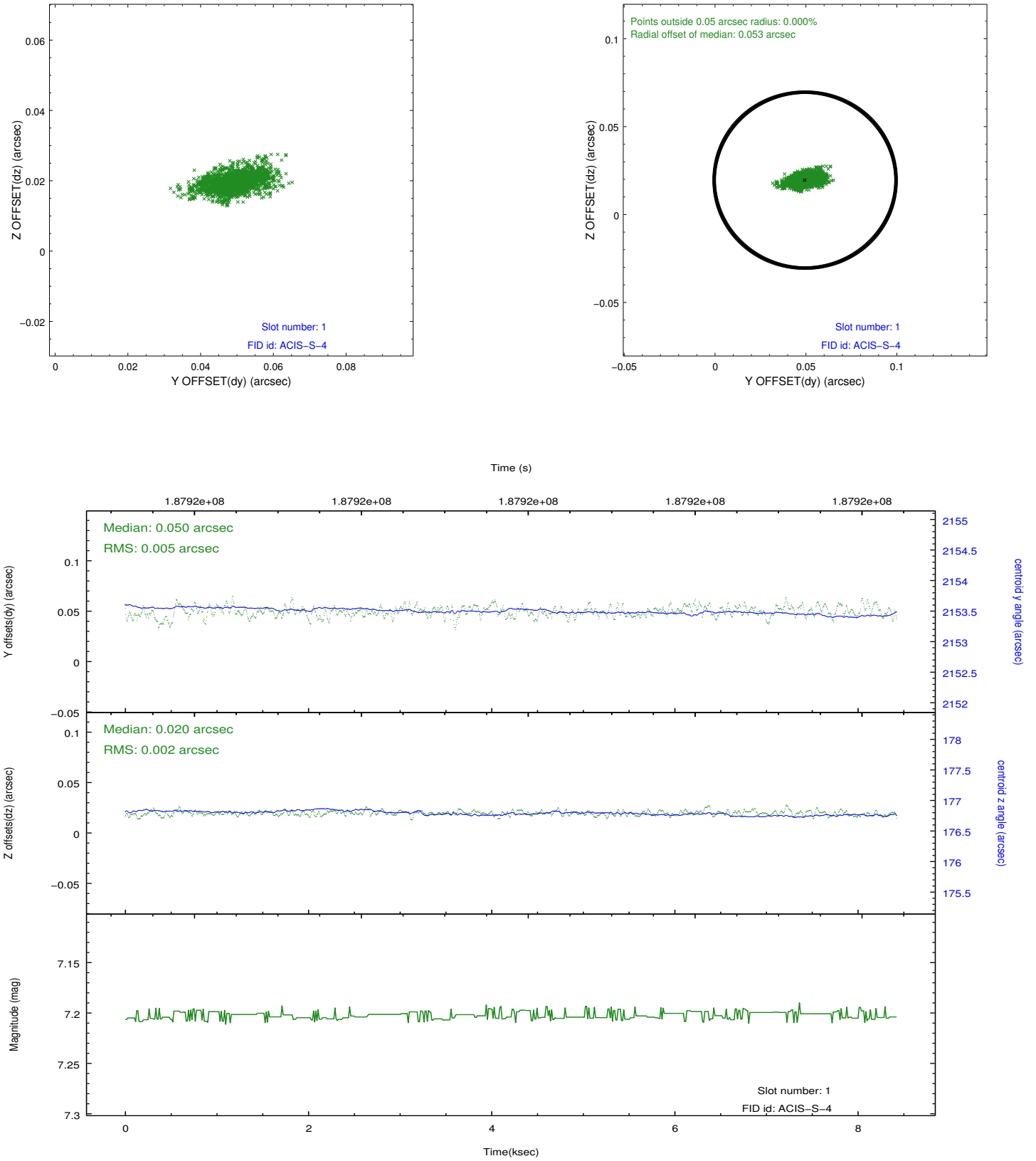


2.5 FID Slots

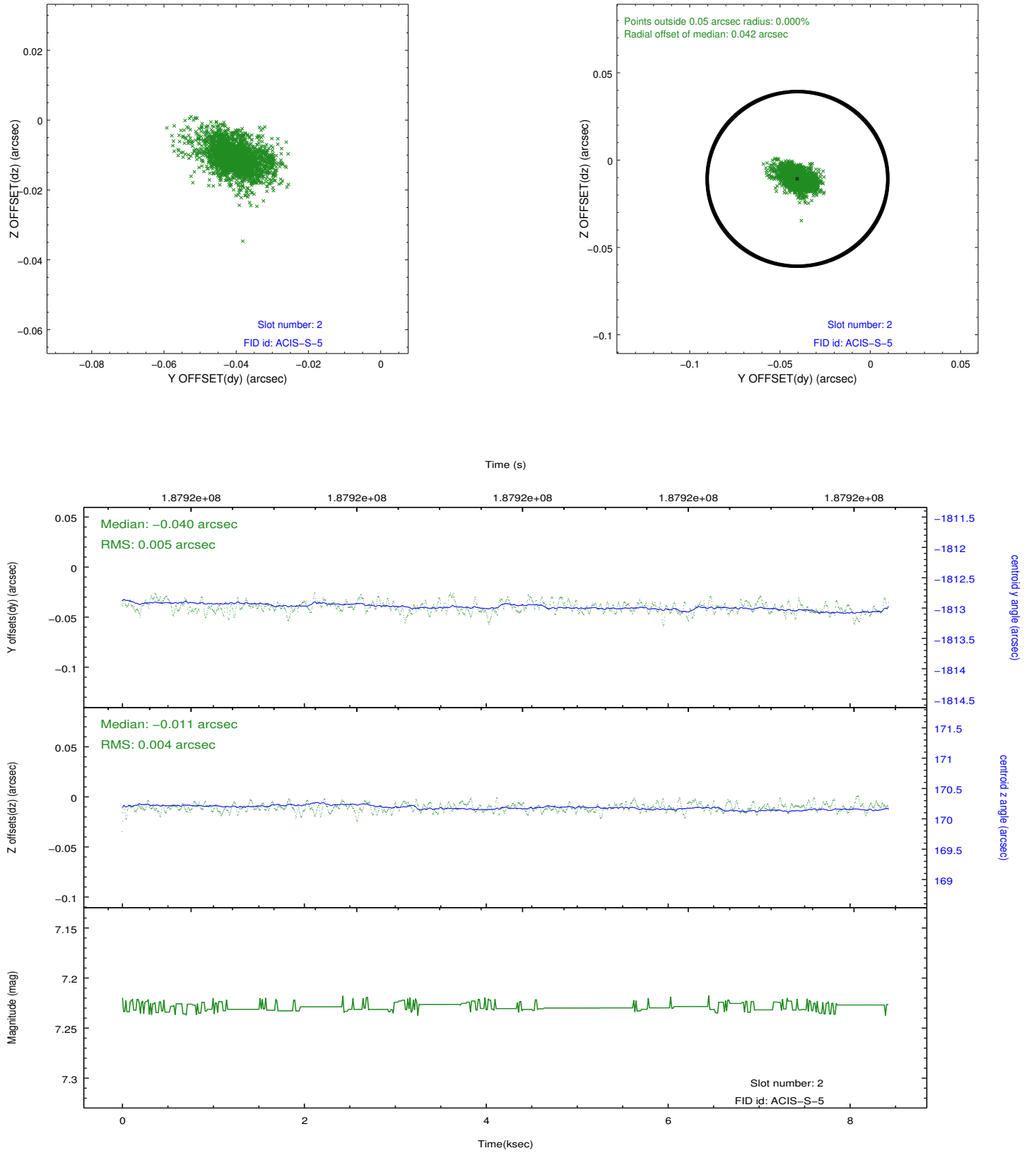
2.5.1 Slot 0



2.5.2 Slot 1



2.5.3 Slot 2



A Summary

A.1 Status

V&V Scientist	Jen Lauer
V&V Date (YYYY-MM-DD)	2012.12.03
V&V Edition	1
V&V Disposition and Status	OK
V&V Charge Time	8.012

A.2 Comments

Window constraint met.