

# V&V Reference Report

## L2 ASCDS Version : 10.4.3.1

Observation 51229 - L2 Version 1  
Chandra X-Ray Center

L2 Processing Date : Feb 22 2016

## Contents

<b>1</b>	<b>Front</b>	<b>2</b>
<b>2</b>	<b>OBI</b>	<b>3</b>
2.1	OBI . . . . .	3
2.1.1	Images . . . . .	3
2.1.2	Bias . . . . .	3
2.1.3	Parameters . . . . .	4
2.1.4	Events . . . . .	4
2.2	Compared Parameters . . . . .	5
2.3	Star Slots . . . . .	6
2.4	FID Slots . . . . .	6
<b>A</b>	<b>Summary</b>	<b>7</b>
A.1	Status . . . . .	7
A.2	Comments . . . . .	7

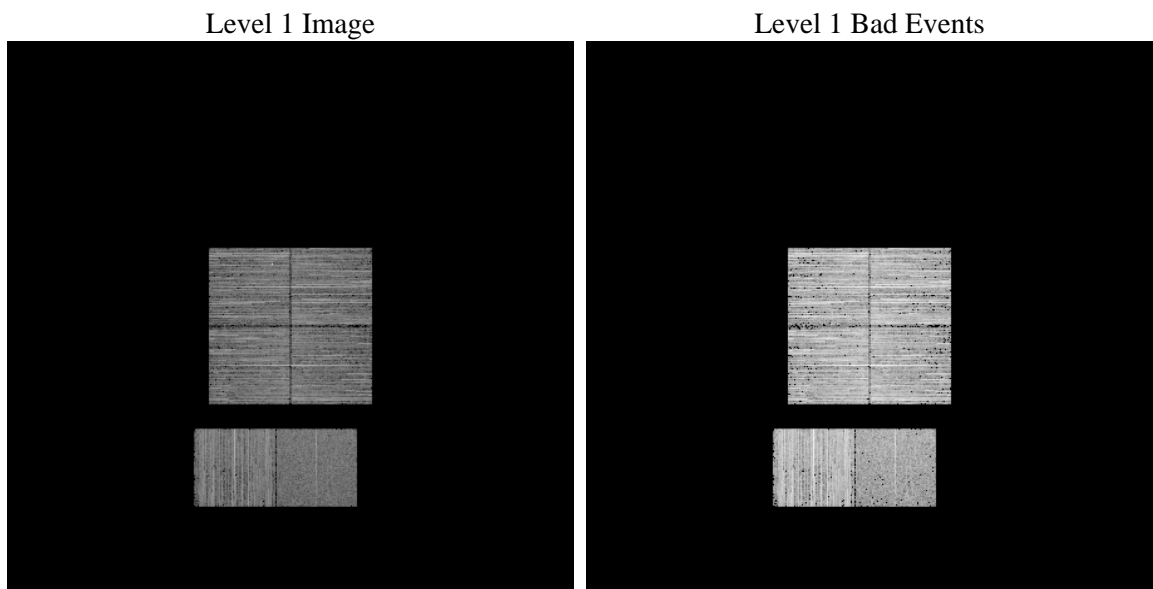
# 1 Front

seq_num	&#160	Sequence number
obs_id	51229	Observation id
title	ACIS-012367 diagnostics	Proposal title
observer	CHANDRA engineering request/realtime commanding	Principal investig
object	&#160	Source name
dtcycle	0	&#160
cycle	P	events from which exps? Prim/Second/Both
ra_targ	0.0	Observer's specified target RA [deg]
dec_targ	0.0	Observer's specified target Dec [deg]
ra_nom	137.01486849311	Nominal RA [deg]
dec_nom	-5.5195523376021	Nominal Dec [deg]
roll_nom	310.8643366796	Nominal Roll [deg]
revision	1	Processing version of data
ontime	3254.4000484943	Sum of GTIs [s]
livetime	3213.1908755159	Livetime [s]
ontime0	3254.4000484943	Sum of GTIs [s]
ontime1	3254.4000484943	Sum of GTIs [s]
ontime2	3254.4000484943	Sum of GTIs [s]
ontime3	3254.4000484943	Sum of GTIs [s]
ontime6	3254.4000484943	Sum of GTIs [s]
ontime7	3254.4000484943	Sum of GTIs [s]
l2events	57588	Number of level 2 events

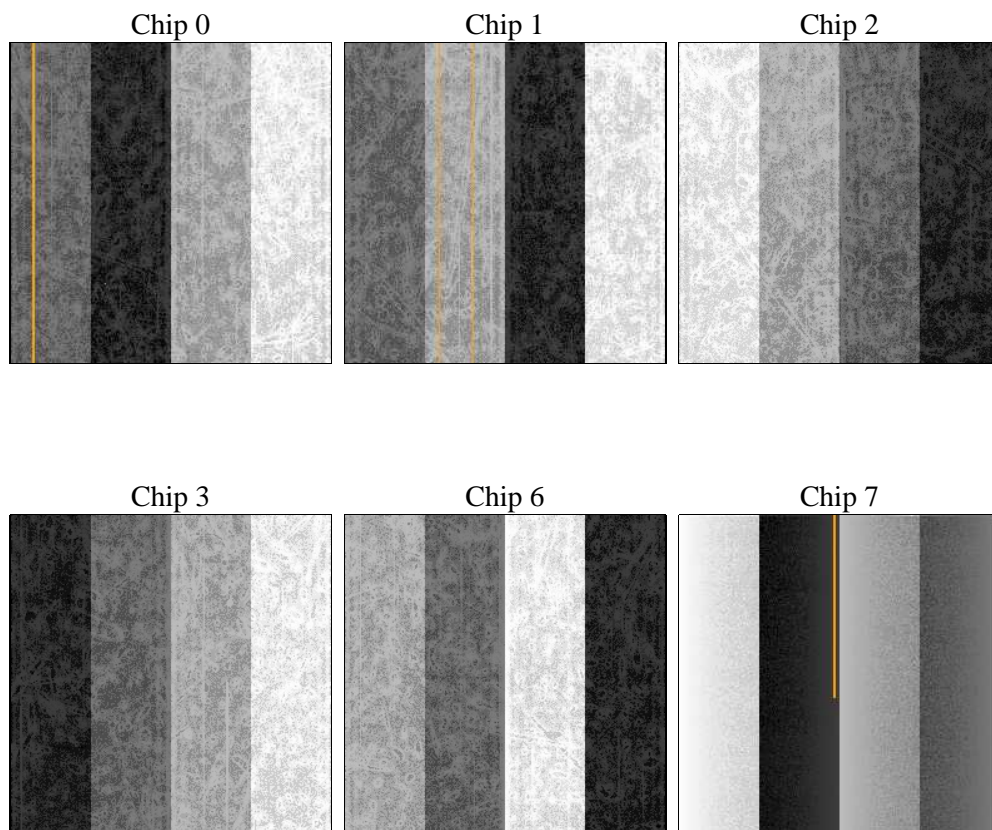
## 2 OBI

### 2.1 OBI

#### 2.1.1 Images



#### 2.1.2 Bias



### 2.1.3 Parameters

obi_num	0	Obi number	sched_exp_time	0.0	[s] Scheduled observation exposure time
ascdsver	10.4.3.1	Processing system revision	ontime	3254.4000484943	Sum of GTIs [s]
caldbver	4.7.0	&#160	ontime0	3254.4000484943	Sum of GTIs [s]
date	2016-02-23T03:02:37	Date and time of file creation	ontime1	3254.4000484943	Sum of GTIs [s]
revision	1	Processing version of data	ontime2	3254.4000484943	Sum of GTIs [s]
			ontime3	3254.4000484943	Sum of GTIs [s]
			ontime6	3254.4000484943	Sum of GTIs [s]
			ontime7	3254.4000484943	Sum of GTIs [s]
			l1events	388330	Number of level 1 events

### 2.1.4 Events

	ccd 0	ccd 1	ccd 2	ccd 3	ccd 6	ccd 7		ccd 0	ccd 1	ccd 2	ccd 3	ccd 6	ccd 7
level 1 events	68525	70321	66673	60938	69778	52095	grade 0 events	3819	3724	3923	4052	3770	2280
rejected events	58371	62101	58566	52699	61396	31674		5%	5%	5%	6%	5%	4%
rejected %	85%	88%	87%	86%	87%	60%	grade 1 events	21	24	26	19	23	33
								0%	0%	0%	0%	0%	0%
							grade 2 events	3819	1953	1737	1741	1977	5058
								5%	2%	2%	2%	2%	9%
							grade 3 events	628	566	584	588	561	1488
								0%	0%	0%	0%	0%	2%
							grade 4 events	586	522	623	591	583	1533
								0%	0%	0%	0%	0%	2%
							grade 5 events	1273	1312	1246	1476	1319	3367
								1%	1%	1%	2%	1%	6%
							grade 6 events	1369	1515	1305	1326	1566	10198
								1%	2%	1%	2%	2%	19%
							grade 7 events	57010	60705	57229	51145	59979	28138
								83%	86%	85%	83%	85%	54%

## 2.2 Compared Parameters

Parameter	Planned	Actual	Parameter	Planned	Actual
Instrument	ACIS	ACIS	Obspar format version number	7	7
Detector	ACIS-012367	ACIS-012367	Obspar file type	PREDICTED	ACTUAL
Grating	NONE	NONE	Obspar update status	NONE	UPDATED
Data mode	FAINT	FAINT	Number of optional ACIS chips dropped	0	0
Observation mode	SECONDARY	SECONDARY	On-chip summing requested	N	N
[deg] Pointing RA	0	137.0148684931108	Subarray requested	NONE	NONE
[deg] Pointing Dec	0	-5.519552337602094	Alternating exposures requested	N	N
[deg] Pointing Roll	0.0	310.8643366795984	[s] Primary exposure time	3.2	3.2
[mm] SIM focus pos	-1.429586	-1.428180813131781			
[mm] SIM defocus	0.1037507710433287	0.1051558262725154			
[mm] SIM translation stage pos	250.455976	250.466033080201			
[mm] SIM translation stage offset	0	-0.01005468664627074			
[s] Observation start time (MET)	572558778.111665	572558777.08666			
Observation start date	2016-02-22T20:06:18	2016-02-22T20:06:17			
[s] Observation end time (MET)	572563870.311954	572563869.28695			
Observation end date	2016-02-22T21:31:10	2016-02-22T21:31:09			
Read mode	TIMED	TIMED			

## **2.3 Star Slots**

## **2.4 FID Slots**

## A Summary

### A.1 Status

V&V Scientist	Joy Nichols
V&V Date (YYYY-MM-DD)	2016.02.23
V&V Edition	1
V&V Disposition and Status	OK
V&V Charge Time	3.2544000484943

### A.2 Comments