

# V&V Reference Report

## L2 ASCDS Version : 8.5

Observation 5029 - L2 Version 3  
Chandra X-Ray Center

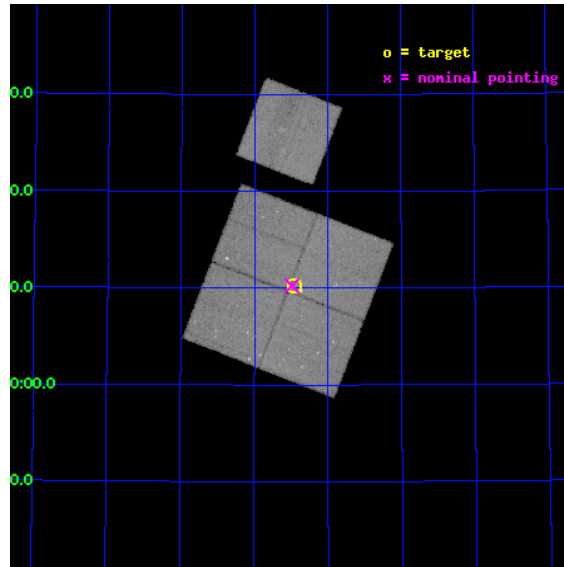
L2 Processing Date : Dec 9 2012

## Contents

<b>1</b>	<b>Front</b>	<b>2</b>
<b>2</b>	<b>OBI</b>	<b>3</b>
2.1	OBI . . . . .	3
2.1.1	Images . . . . .	3
2.1.2	Bias . . . . .	3
2.1.3	Parameters . . . . .	4
2.1.4	Events . . . . .	4
2.2	Compared Parameters . . . . .	5
2.3	Aspect . . . . .	6
2.4	Star Slots . . . . .	9
2.4.1	Slot 3 . . . . .	9
2.4.2	Slot 4 . . . . .	10
2.4.3	Slot 5 . . . . .	11
2.4.4	Slot 6 . . . . .	12
2.4.5	Slot 7 . . . . .	13
2.5	FID Slots . . . . .	14
2.5.1	Slot 0 . . . . .	14
2.5.2	Slot 1 . . . . .	15
2.5.3	Slot 2 . . . . .	16
<b>A</b>	<b>Summary</b>	<b>17</b>
A.1	Status . . . . .	17
A.2	Comments . . . . .	17

# 1 Front

seq_num	900336	Sequence number
obs_id	5029	Observation id
title	The Balance of Power between Starbursts and AGN: a Chandra/SIRTf Survey.	Proposal title
observer	Dr. Belinda Wilkes	Principal investigator
object	SWIRE LOCKMAN 7	Source name
dtcycle	0	&#160
cycle	P	events from which exps? Prim/Second/Both
ra_targ	160.863475	Observer's specified target RA [deg]
dec_targ	59.170854	Observer's specified target Dec [deg]
ra_nom	160.87255175378	Nominal RA [deg]
dec_nom	59.170719106469	Nominal Dec [deg]
roll_nom	21.200887550806	Nominal Roll [deg]
revision	3	Processing version of data
ontime	72068.717940897	Sum of GTIs [s]
livetime	71127.087084781	Livetime [s]
ontime0	72056.154069841	Sum of GTIs [s]
ontime1	72068.717910945	Sum of GTIs [s]
ontime2	72065.576890975	Sum of GTIs [s]
ontime3	72068.717940897	Sum of GTIs [s]
ontime6	72074.999861389	Sum of GTIs [s]
l2events	280886	Number of level 2 events

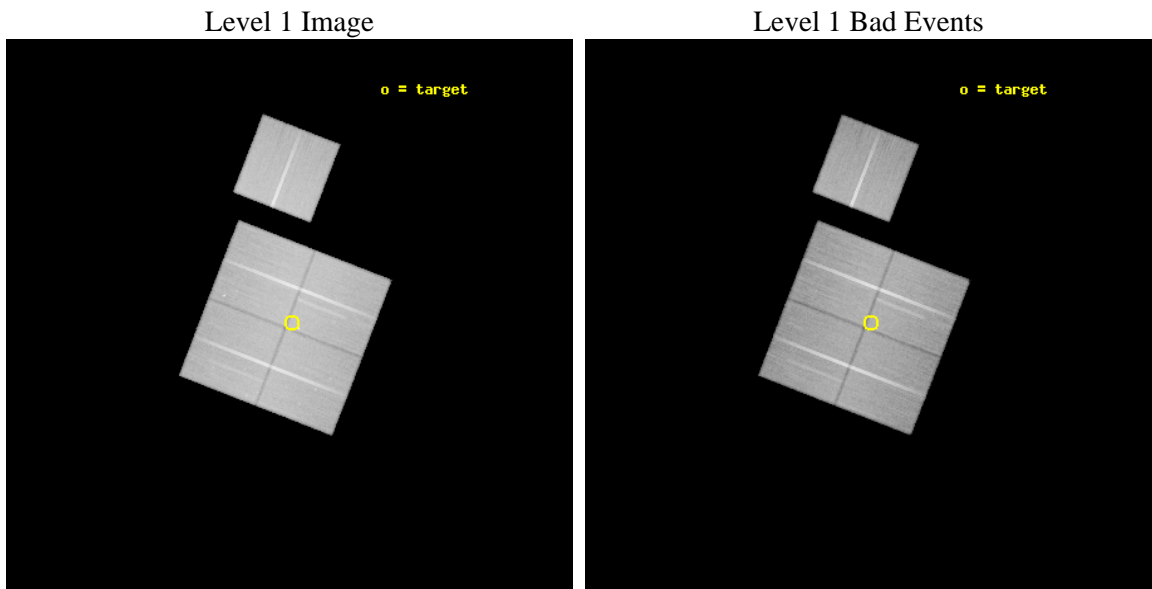




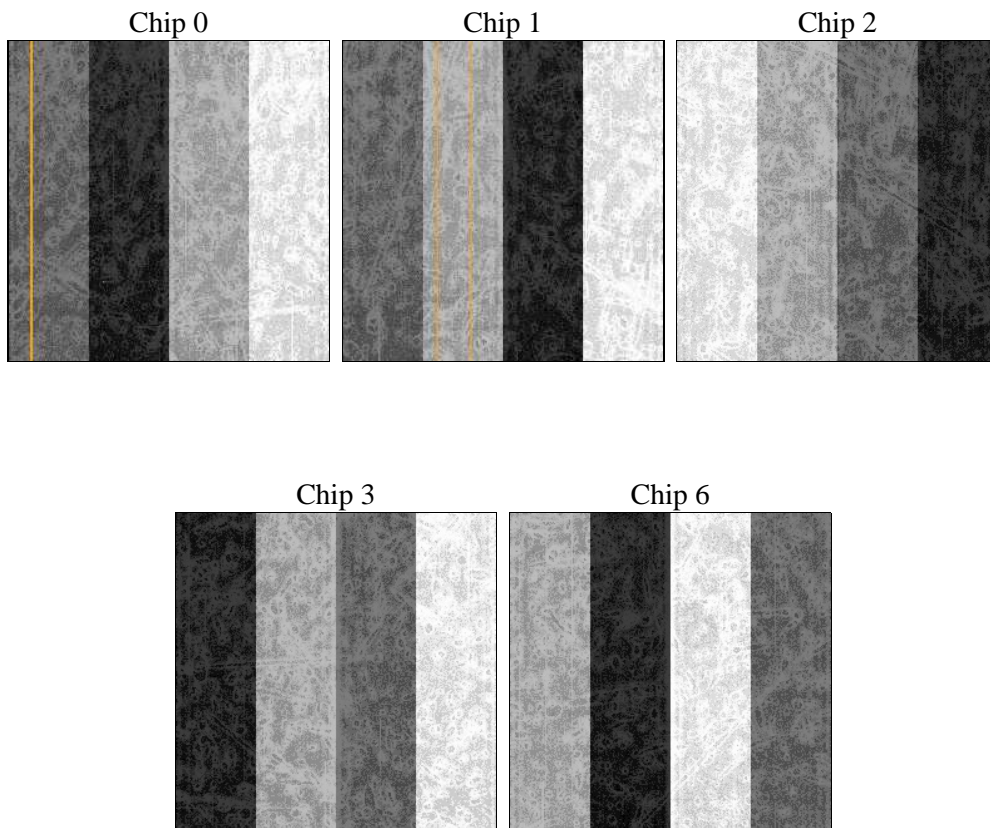
## 2 OBI

### 2.1 OBI

#### 2.1.1 Images



#### 2.1.2 Bias



### 2.1.3 Parameters

obi_num	0	Obi number	sched_exp_time	71950.245000	[s] Scheduled observation exposure time
ascdsver	8.5	Processing system revision	ontime	72068.717940897	Sum of GTIs [s]
caldbver	4.5.4	&#160	ontime0	72056.154069841	Sum of GTIs [s]
date	2012-12-09T10:07:46	Date and time of file creation	ontime1	72068.717910945	Sum of GTIs [s]
revision	3	Processing version of data	ontime2	72065.576890975	Sum of GTIs [s]
			ontime3	72068.717940897	Sum of GTIs [s]
			ontime6	72074.999861389	Sum of GTIs [s]
			l1events	2658127	Number of level 1 events

### 2.1.4 Events

	ccd 0	ccd 1	ccd 2	ccd 3	ccd 6
level 1 events	507467	505877	558608	541742	544433
rejected events	441249	437634	494266	477188	481759
rejected %	86%	86%	88%	88%	88%

	ccd 0	ccd 1	ccd 2	ccd 3	ccd 6
grade 0 events	28690	27427	28974	28916	24949
	5%	5%	5%	5%	4%
grade 1 events	267	281	358	327	236
	0%	0%	0%	0%	0%
grade 2 events	14120	14813	13207	12703	13191
	2%	2%	2%	2%	2%
grade 3 events	6514	6620	5985	6280	6222
	1%	1%	1%	1%	1%
grade 4 events	6079	6852	6057	6106	6060
	1%	1%	1%	1%	1%
grade 5 events	22134	23265	21267	24415	24611
	4%	4%	3%	4%	4%
grade 6 events	11311	13099	10654	11010	12786
	2%	2%	1%	2%	2%
grade 7 events	418352	413520	472106	451985	456378
	82%	81%	84%	83%	83%

## 2.2 Compared Parameters

Parameter	Planned	Actual	Parameter	Planned	Actual
Instrument	ACIS	ACIS	Obspar format version number	7	7
Detector	ACIS-01236	ACIS-01236	Obspar file type	PREDICTED	ACTUAL
Grating	NONE	NONE	Obspar update status	NONE	UPDATED
Data mode	VFAINT	VFAINT	Number of optional ACIS chips dropped	0	0
Observation mode	POINTING	POINTING	On-chip summing requested	N	N
[deg] Pointing RA	160.839225	160.8725517537812	Subarray requested	NONE	NONE
[deg] Pointing Dec	59.149300	59.17071910646927	Alternating exposures requested	N	N
[deg] Pointing Roll	21.020822	21.20088755080578	[s] Primary exposure time	0.000000	3.1
[deg] Roll angle	19.200000	19.200000			
[deg] Roll tolerance	1.800000	1.800000			
Roll constraint allows 180D rotation	Y	Y			
[mm] SIM focus pos	-0.782348	-0.7809083437167272			
[mm] SIM defocus	0	0.001439871863259334			
[mm] SIM translation stage pos	-233.592463	-233.5874344608287			
[mm] SIM translation stage offset	0	-0.005018542100998502			
[s] Observation start time (MET)	212385915.184000	212384659.61635			
Observation start date	2004-09-24T04:04:11	2004-09-24T03:44:19			
[s] Observation end time (MET)	212457865.184000	212458098.81963			
Observation end date	2004-09-25T00:03:21	2004-09-25T00:08:18			
Read mode	TIMED	TIMED			

## 2.3 Aspect

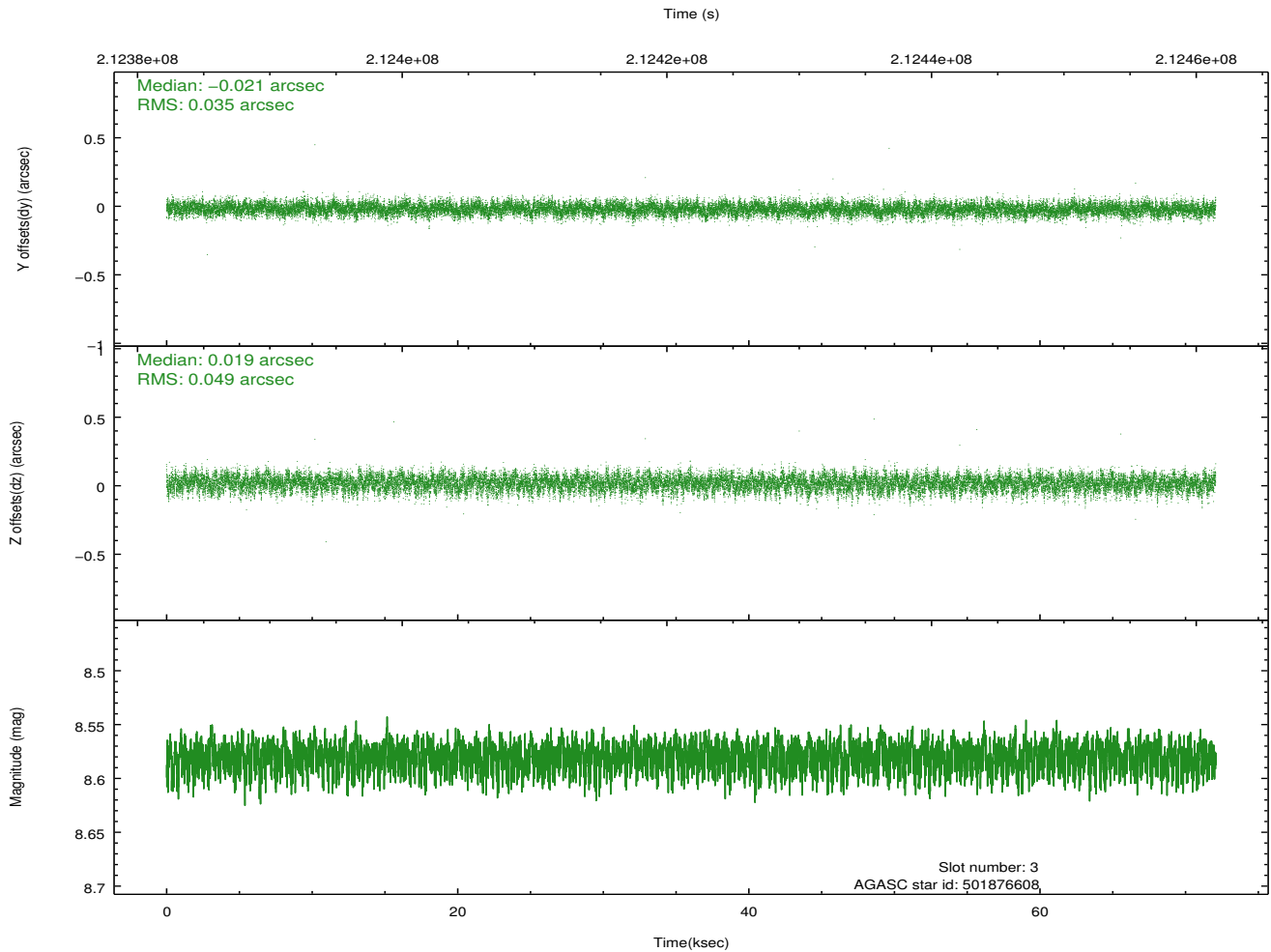
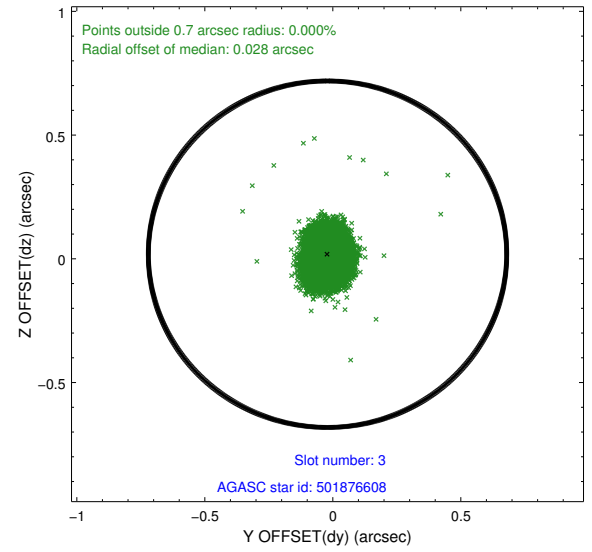
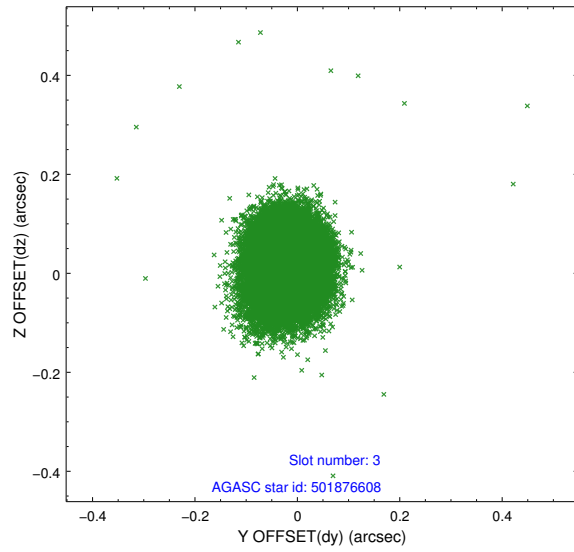


### Slot Statistics

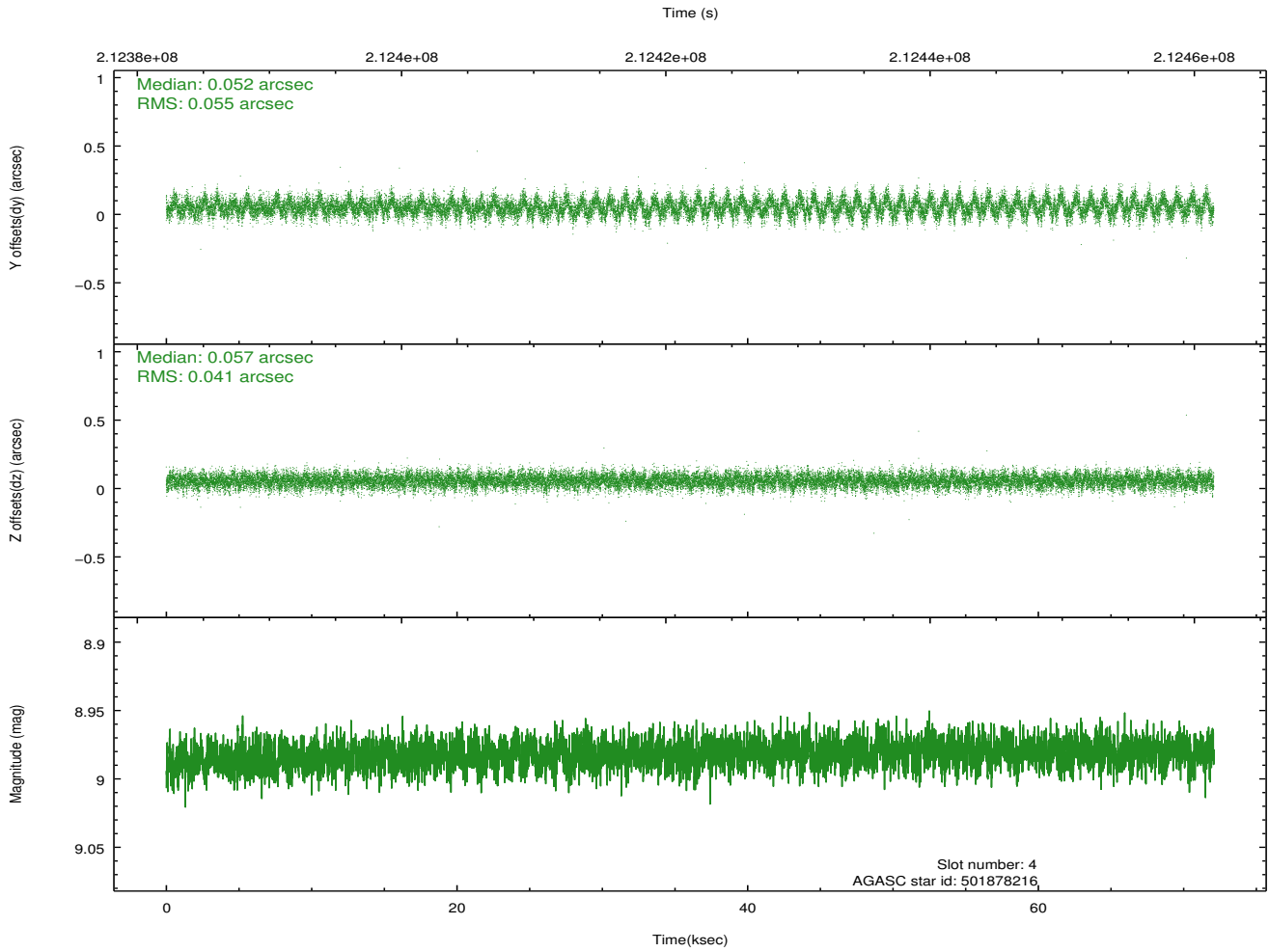
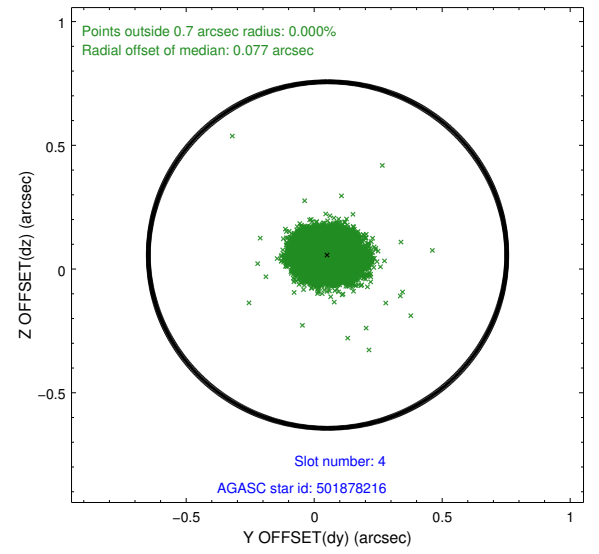
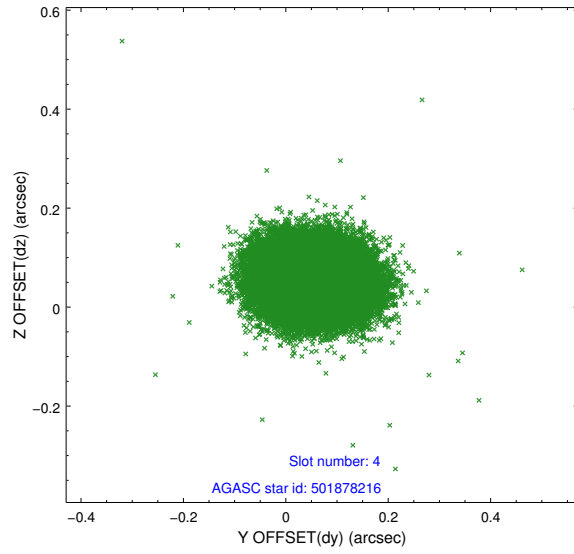
slot	status	id	mag	n_pts	med_dy	med_dz	dr1	dr2	ra	dec	mean_y	mean_z
0	FID	ACIS-I-2	7.14	17576	-0.076	-0.096	0.017	0.025	0.000000	0.000000	-761.33	-841.83
1	FID	ACIS-I-4	7.18	17581	0.107	0.073	0.016	0.027	0.000000	0.000000	2152.93	1064.56
2	FID	ACIS-I-5	7.22	17580	-0.133	0.092	0.016	0.024	0.000000	0.000000	-1815.31	1062.34
3	GUIDE	501876608	8.58	35157	-0.021	0.019	0.063	0.103	161.204341	58.717464	80.34	-1694.20
4	GUIDE	501878216	8.98	35147	0.052	0.057	0.072	0.118	161.663048	59.249982	1549.16	-196.64
5	GUIDE	501878576	7.84	35153	-0.054	0.043	0.042	0.068	161.532118	59.060873	1085.63	-750.77
6	GUIDE	501882104	8.43	35158	0.182	-0.073	0.066	0.104	160.237120	59.342503	-780.37	1049.70
7	GUIDE	501880360	8.30	35150	-0.162	-0.046	0.055	0.089	161.850113	59.665463	2387.19	1088.55

## 2.4 Star Slots

### 2.4.1 Slot 3

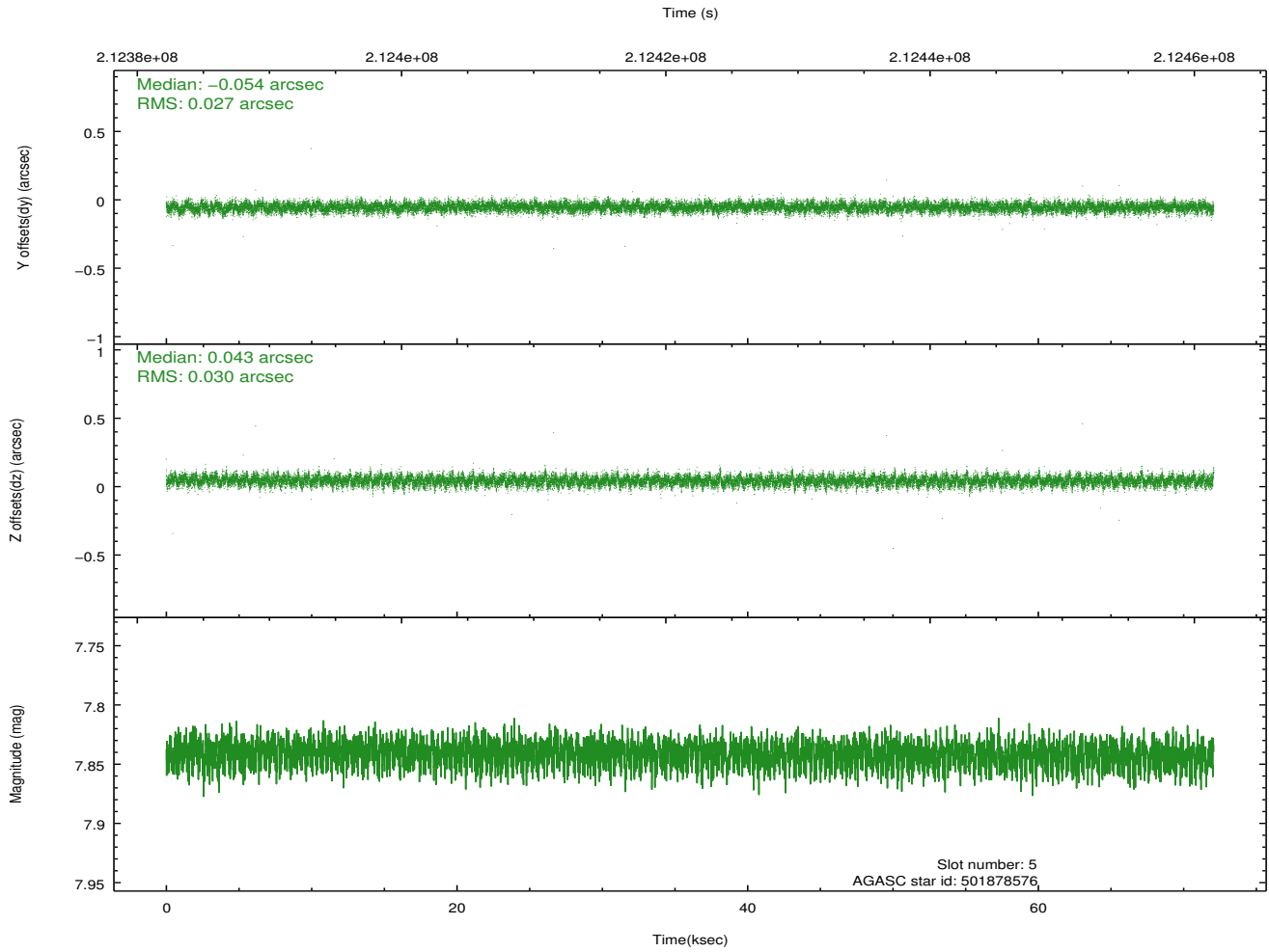
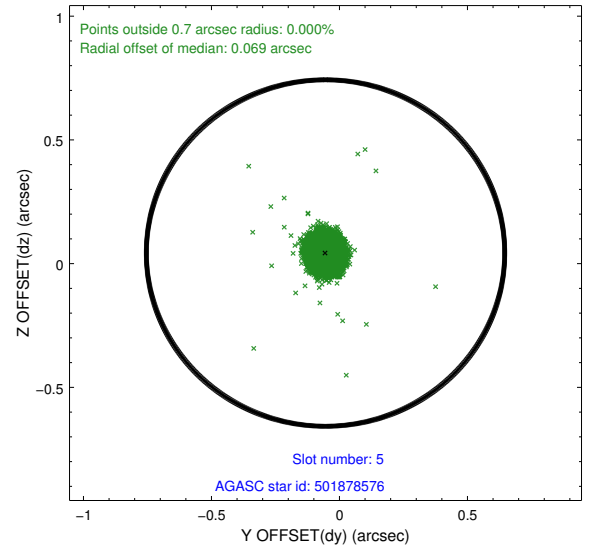
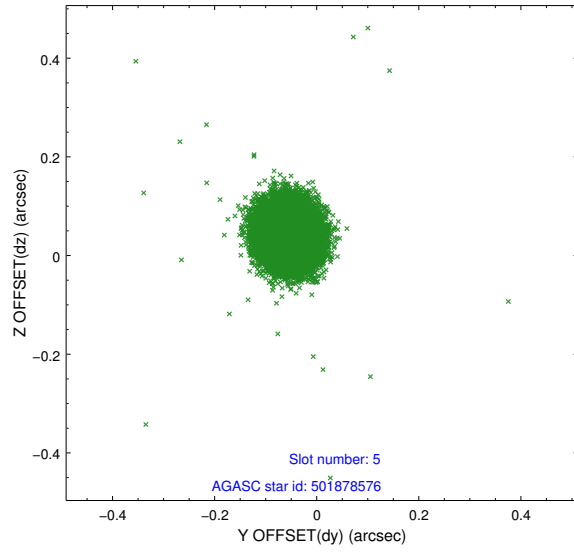


## 2.4.2 Slot 4

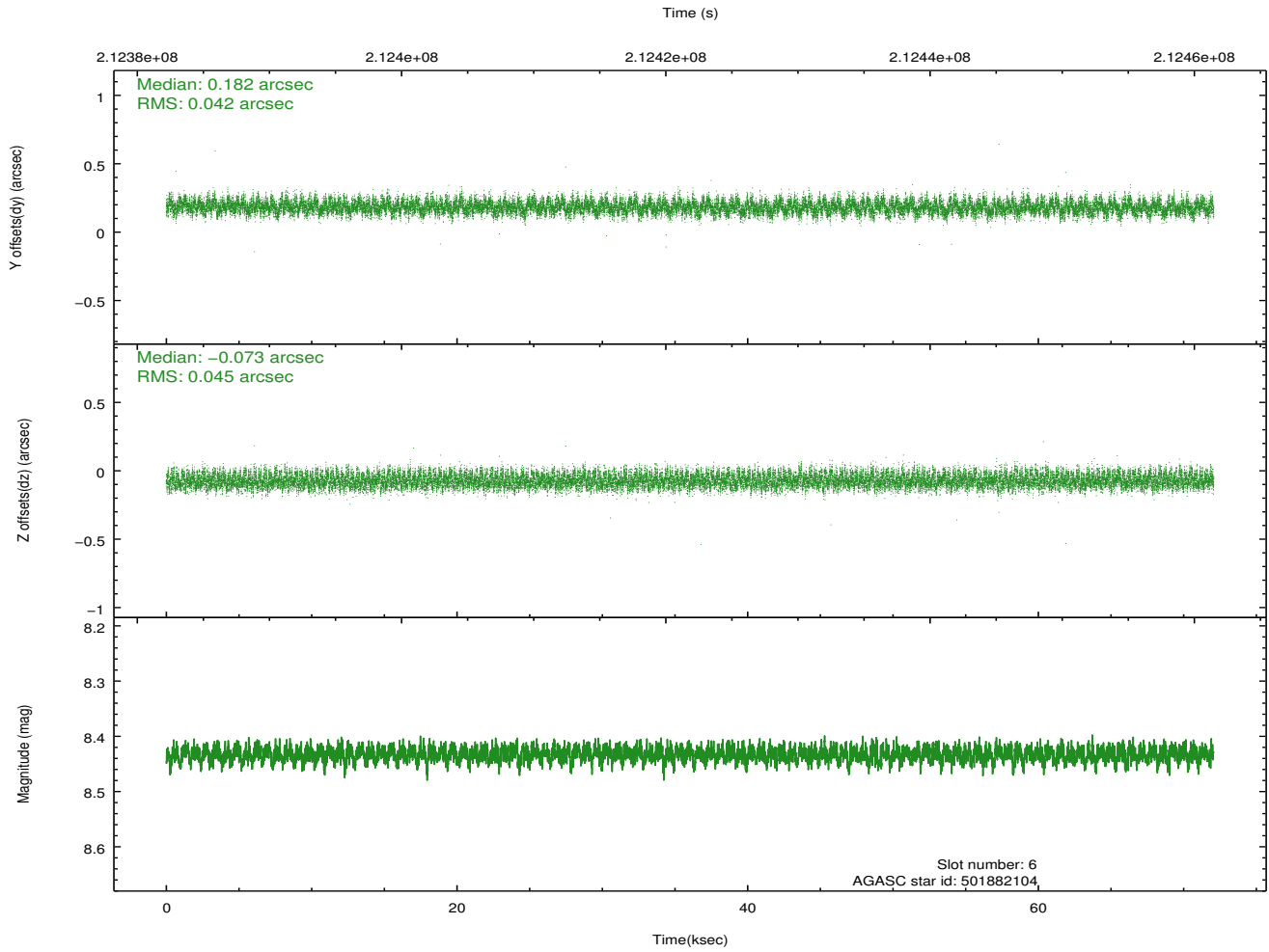
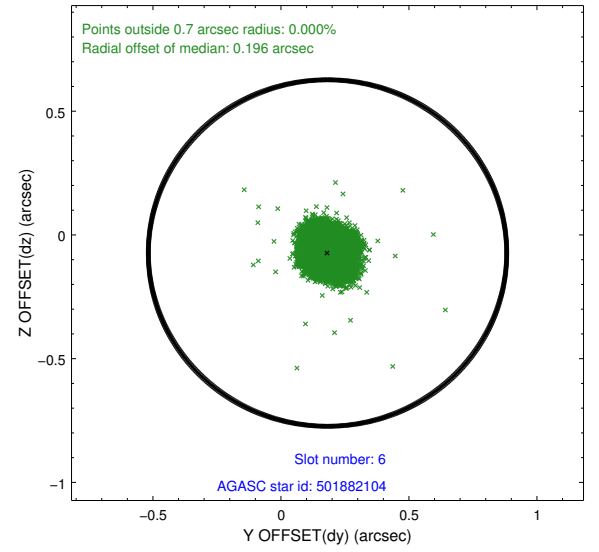
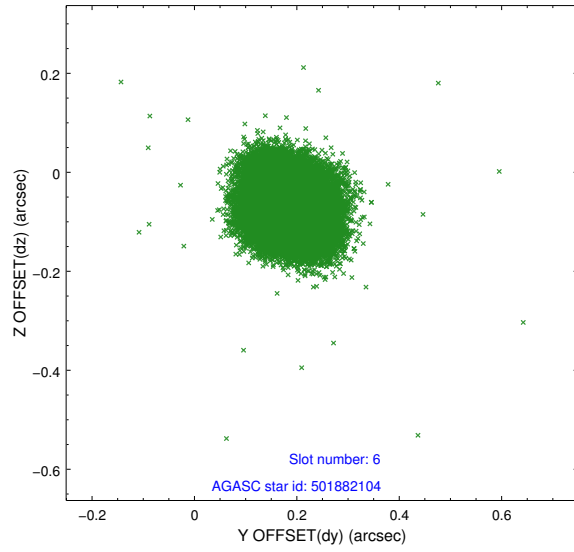




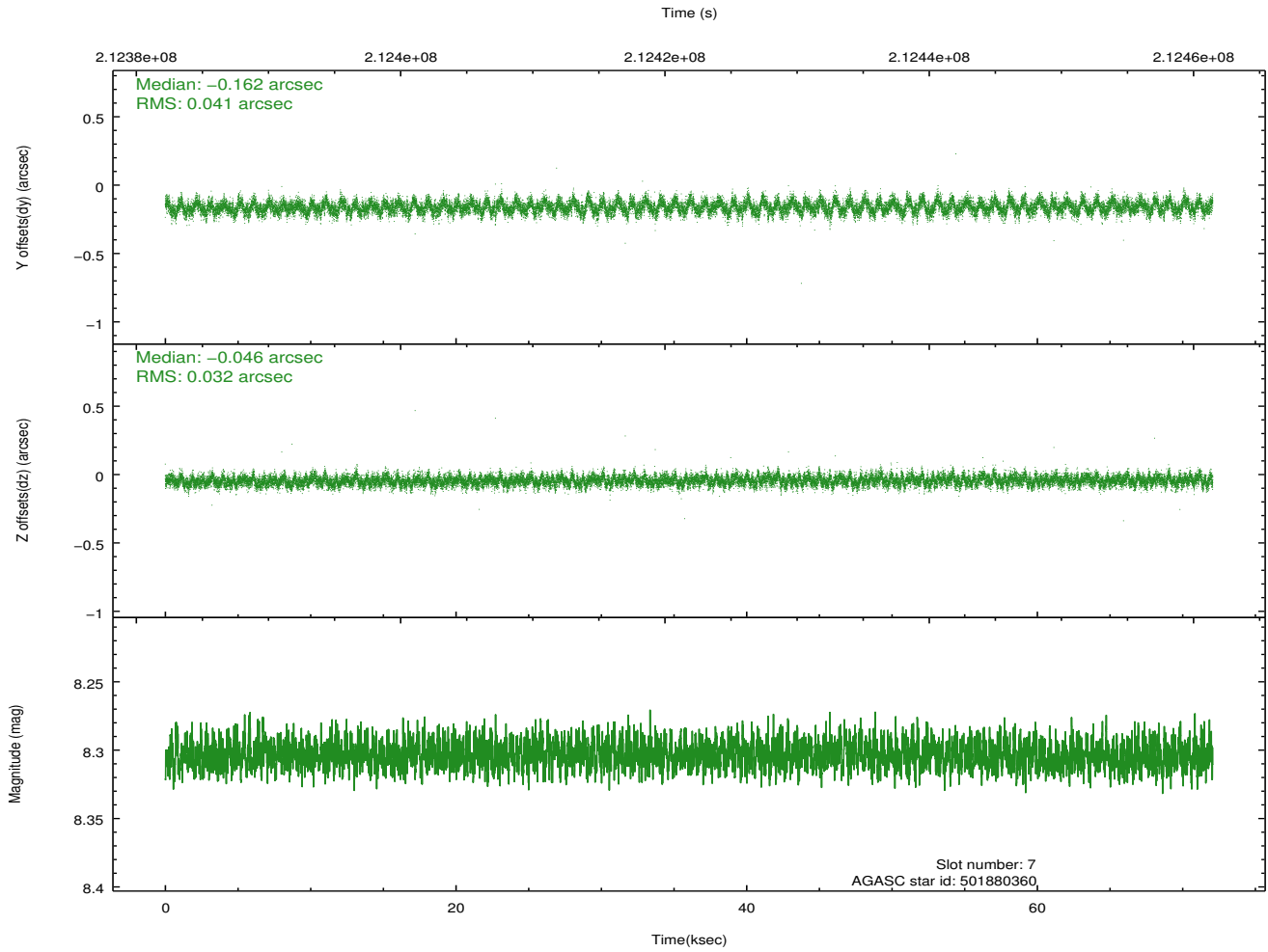
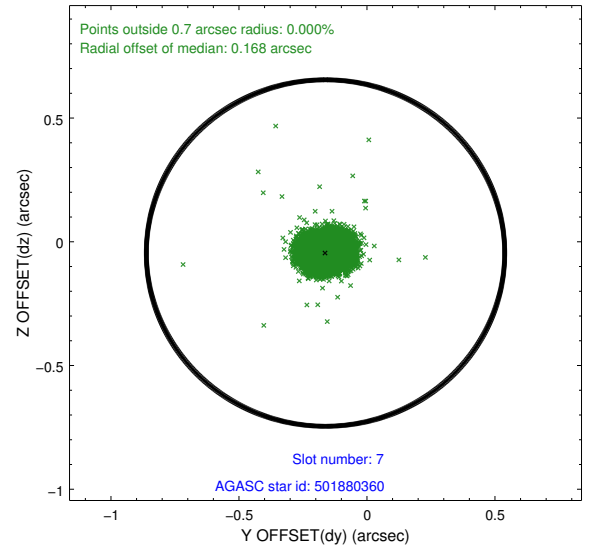
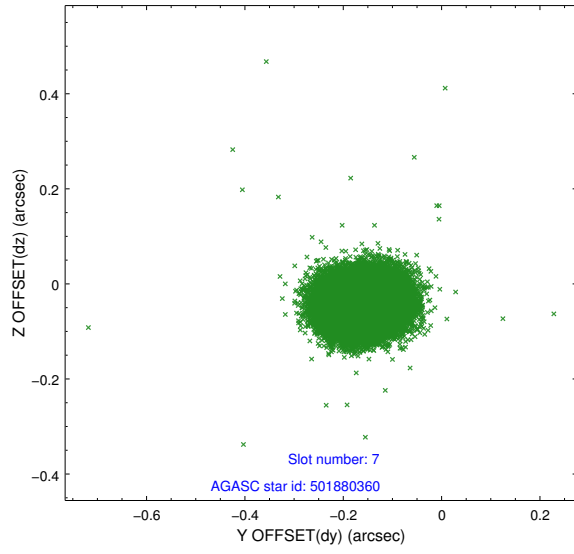
### 2.4.3 Slot 5



## 2.4.4 Slot 6

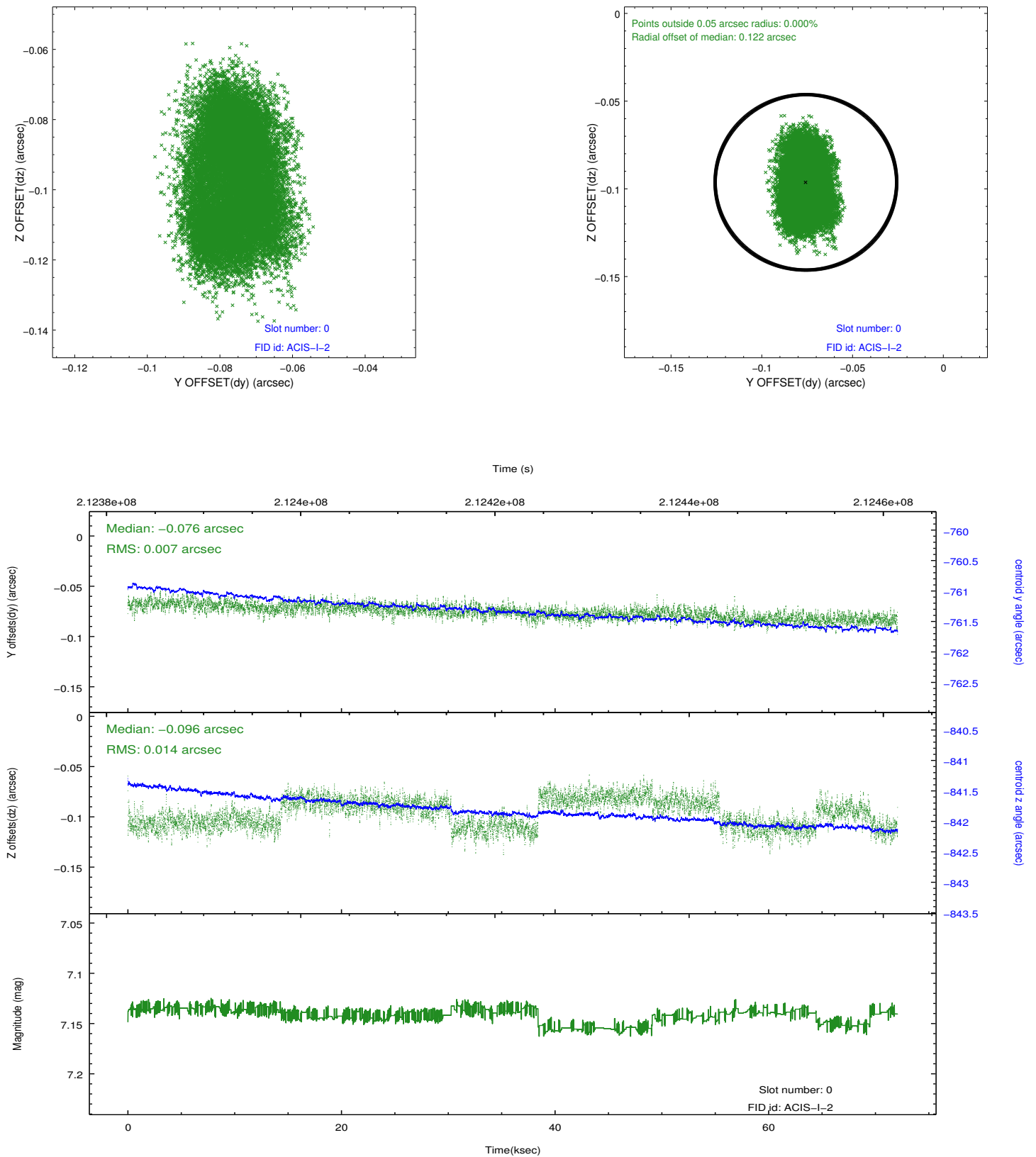


## 2.4.5 Slot 7

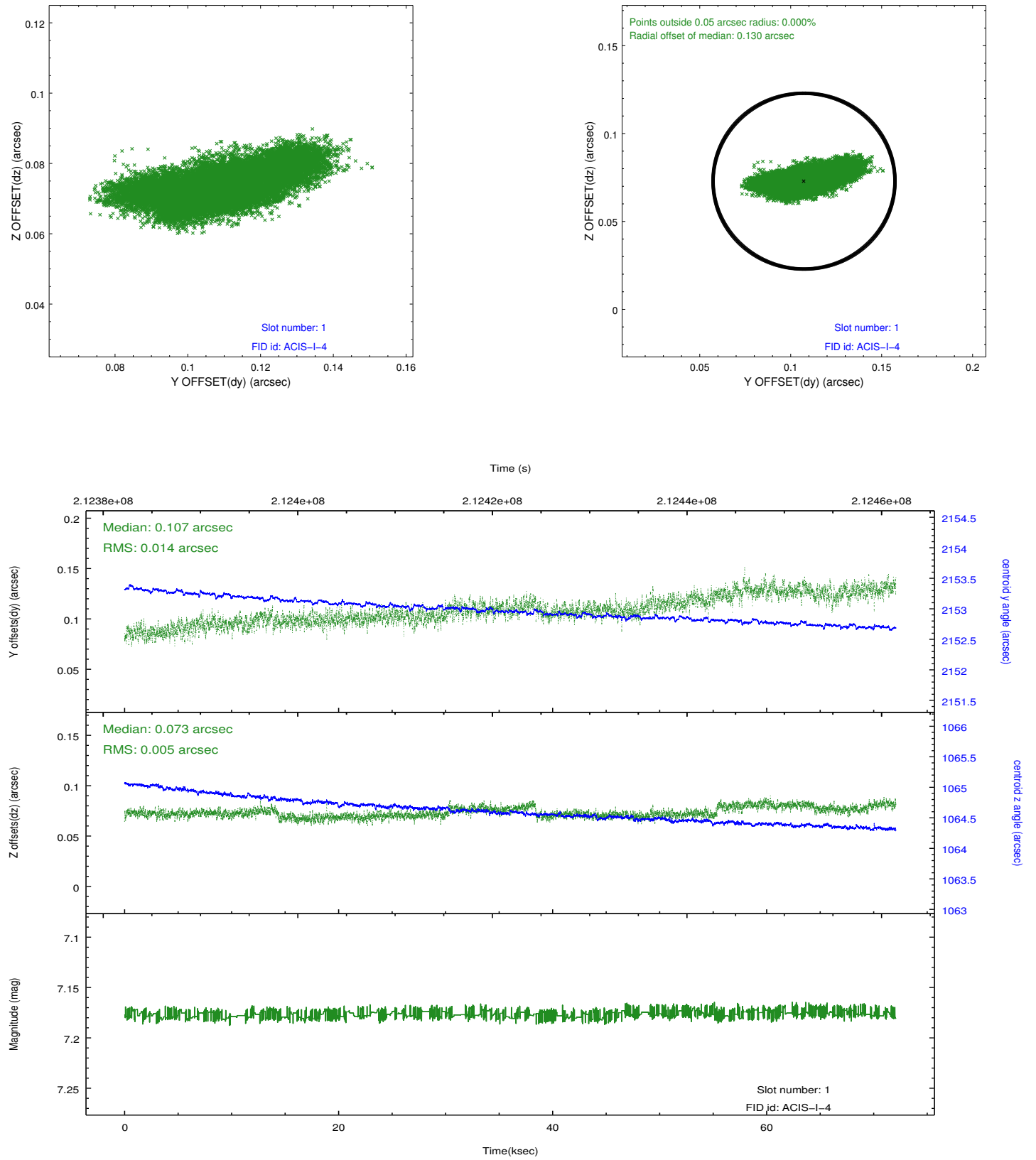


## 2.5 FID Slots

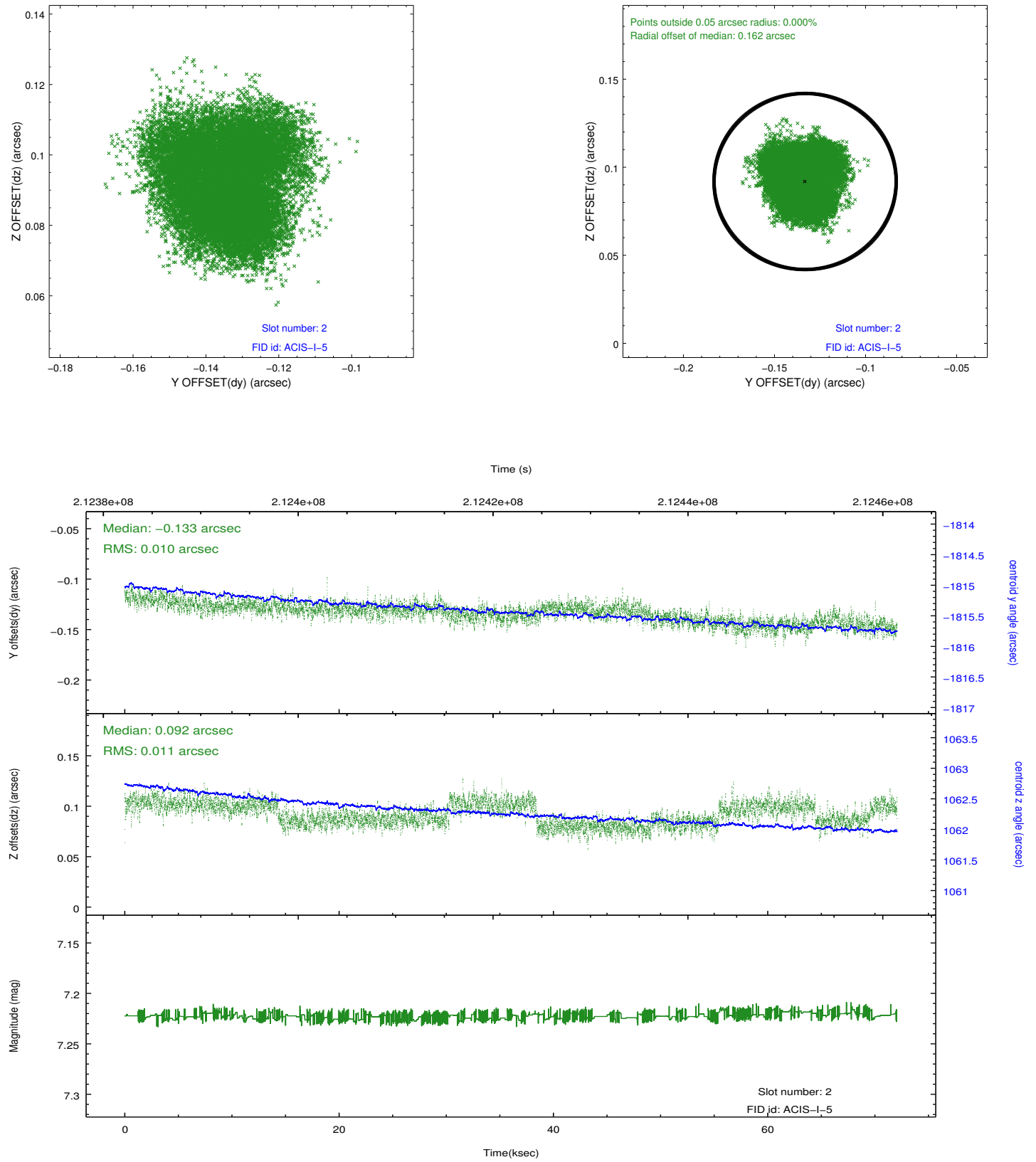
### 2.5.1 Slot 0



## 2.5.2 Slot 1



### 2.5.3 Slot 2



## A Summary

### A.1 Status

V&V Scientist	Beth Sundheim
V&V Date (YYYY-MM-DD)	2013.01.02
V&V Edition	1
V&V Disposition and Status	OK
V&V Charge Time	72.068

### A.2 Comments

Joint proposal with NOAO.  
Roll preference was not met.