

V&V Reference Report

L2 ASCDS Version : 8.5.0.1

Observation 4849 - L2 Version 4
Chandra X-Ray Center

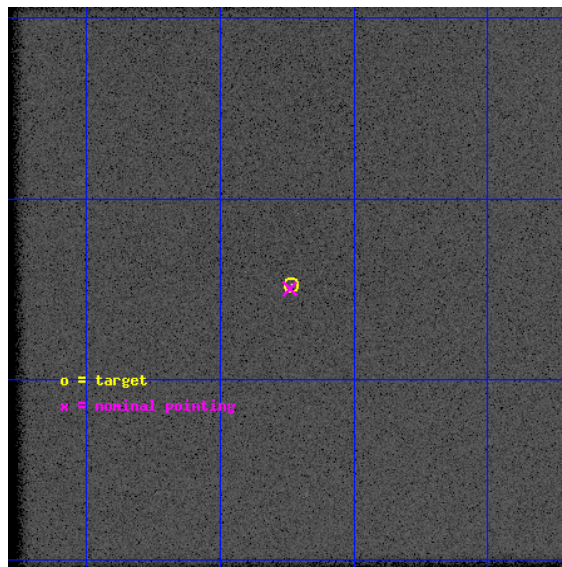
L2 Processing Date : Dec 12 2012

Contents

1	Front	2
2	OBI	3
2.1	OBI	3
2.1.1	Images	3
2.1.2	Parameters	4
2.1.3	Events	4
2.2	Compared Parameters	5
2.3	Aspect	6
2.4	Star Slots	9
2.4.1	Slot 3	9
2.4.2	Slot 4	10
2.4.3	Slot 5	11
2.4.4	Slot 6	12
2.4.5	Slot 7	13
2.5	FID Slots	14
2.5.1	Slot 0	14
2.5.2	Slot 1	15
2.5.3	Slot 2	16
A	Summary	17
A.1	Status	17
A.2	Comments	17

1 Front

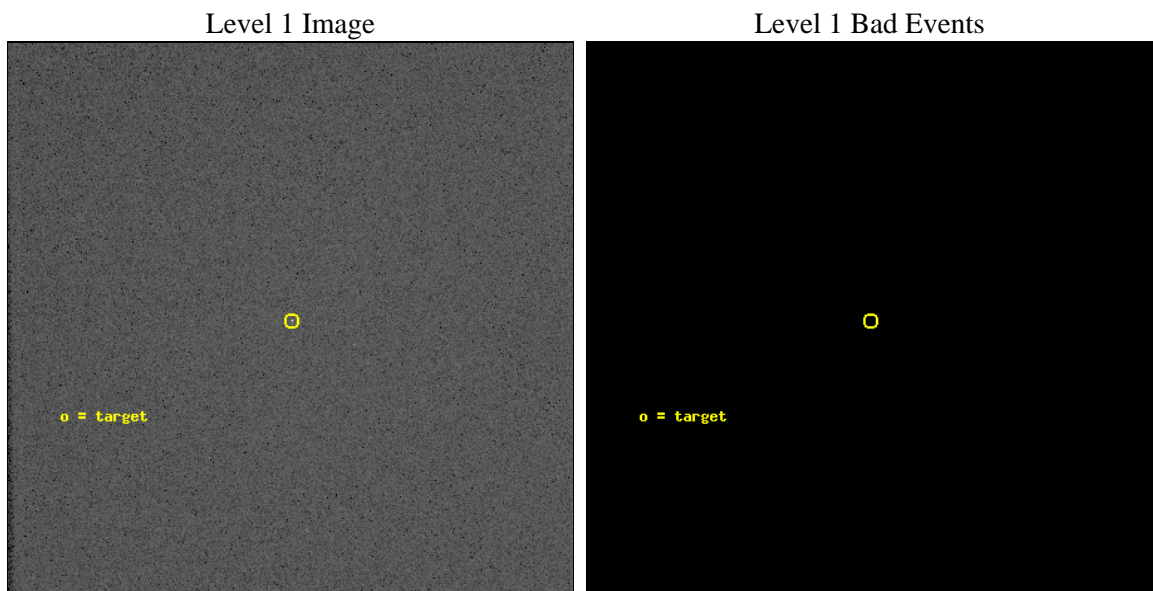
seq_num	700931	Sequence number
obs_id	4849	Observation id
title	EXTENDED EMISSION AND ACCRETION RATES IN BL LACERTAE OBJECTS	Propo
observer	Dr. Rita Sambruna	Principal investigator
object	H 0323+022	Source name
ra_targ	51.558333	Observer's specified target RA [deg]
dec_targ	2.42075	Observer's specified target Dec [deg]
ra_nom	51.559859380836	Nominal RA [deg]
dec_nom	2.4168980215322	Nominal Dec [deg]
roll_nom	314.36122930275	Nominal Roll [deg]
revision	4	Processing version of data
ontime	20183.275907725	[s]
livetime	20023.639016842	Ontime multiplied by DTCOR
l2events	816825	Number of level 2 events



2 OBI

2.1 OBI

2.1.1 Images



2.1.2 Parameters

obi_num	0	Obi number	sched_exp_time	20000.000000	[s] Scheduled observation exposure time
ascdsver	8.5	Processing system revision	ontime	20183.275907725	[s]
caldbver	4.5.4	 	l1events	1282662	Number of level 1 events
date	2012-12-12T13:24:05	Date and time of file creation			
revision	4	Processing version of data			

2.1.3 Events

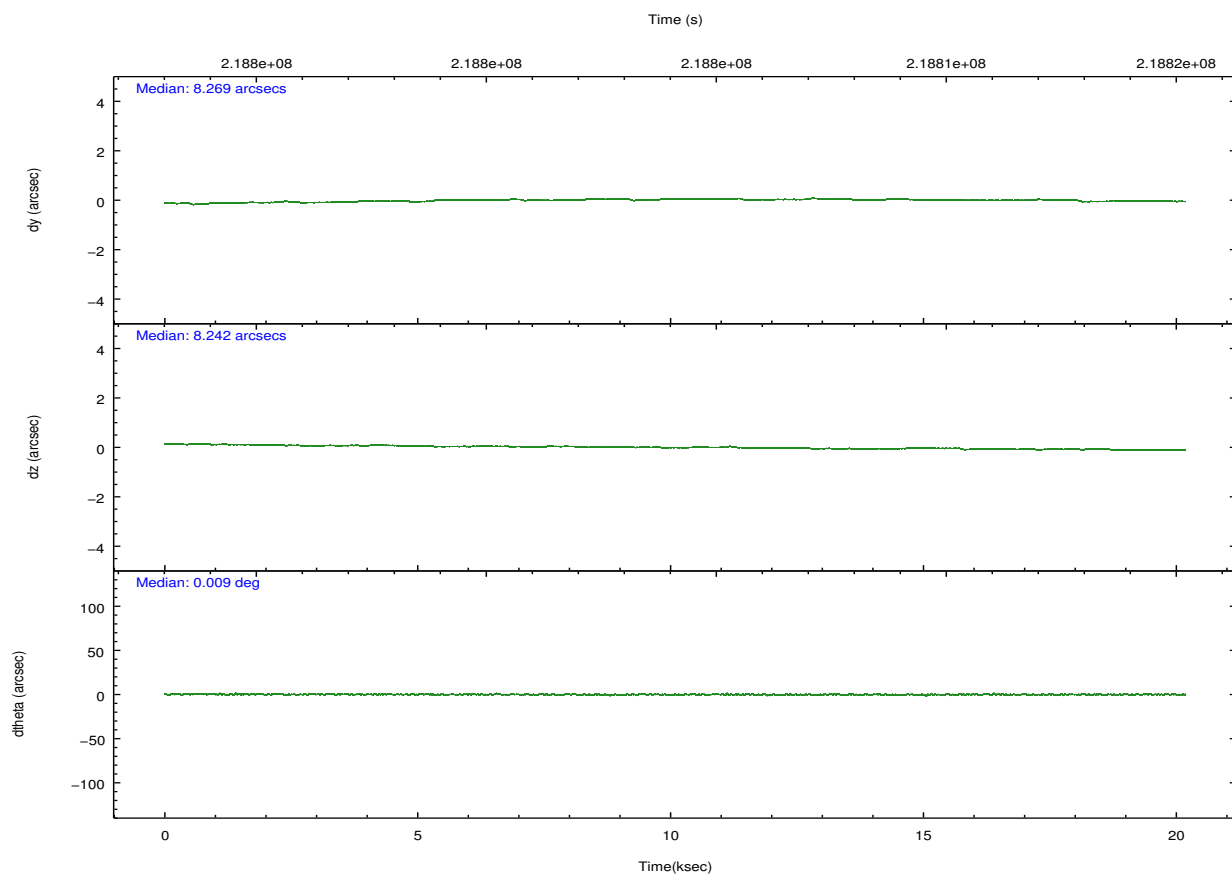
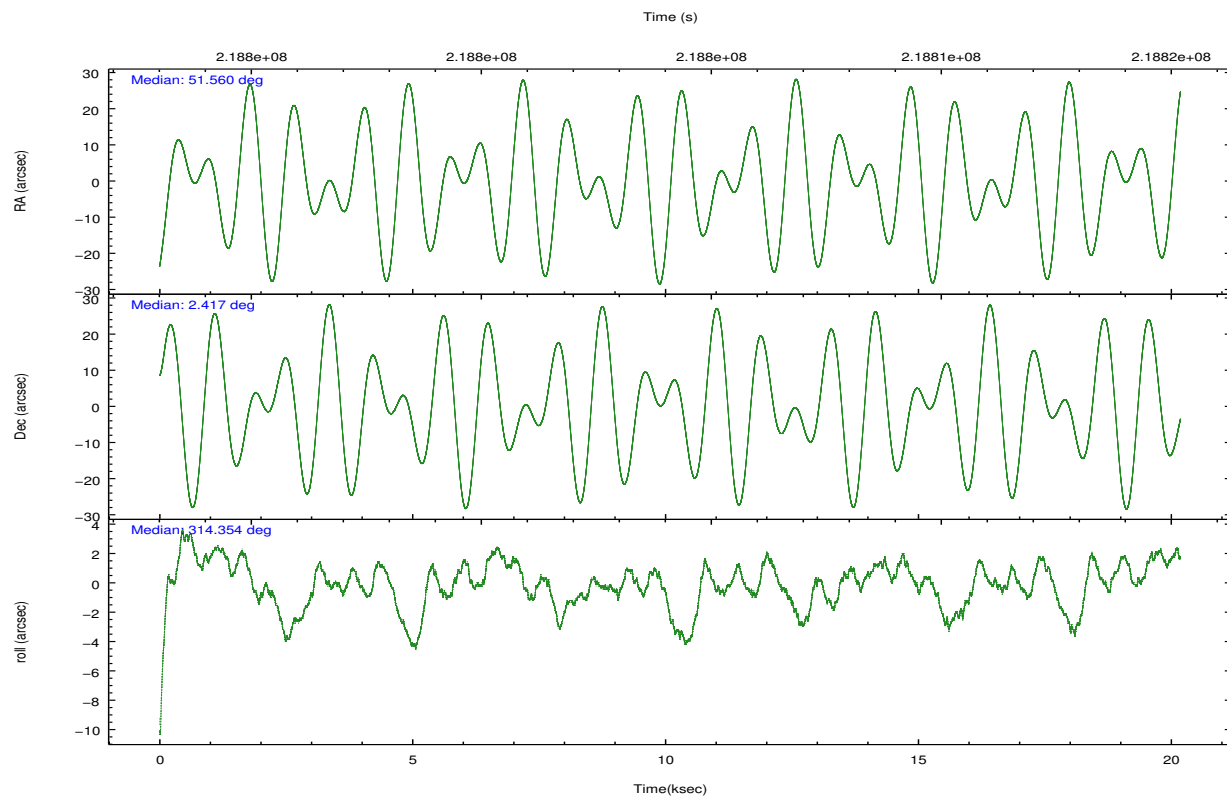
Level 1 Events

	segment 0
level 1 events	1282662
rejected events	65200
rejected %	5%

2.2 Compared Parameters

Parameter	Planned	Actual	Parameter	Planned	Actual
Instrument	HRC	HRC	Obspar format version number	7	7
Detector	HRC-I	HRC-I	Obspar file type	PREDICTED	ACTUAL
Grating	NONE	NONE	Obspar update status	NONE	UPDATED
Data mode	OBSERVING	OBSERVING			
Observation mode	POINTING	POINTING			
[deg] Pointing RA	51.533585	51.55985938083585			
[deg] Pointing Dec	2.423583	2.416898021532194			
[deg] Pointing Roll	314.457833	314.3612293027471			
[mm] SIM focus pos	-1.040293	-1.038866356238299			
[mm] SIM defocus	0	0.001426264420575141			
[mm] SIM translation stage pos	126.985494	126.9829799899862			
[mm] SIM translation stage offset	0	0.002508901615314585			
[s] Observation start time (MET)	218794196.184000	218793080.34102			
Observation start date	2004-12-07T08:08:52	2004-12-07T07:51:20			
[s] Observation end time (MET)	218814196.184000	218815119.89201			
Observation end date	2004-12-07T13:42:12	2004-12-07T13:58:39			

2.3 Aspect

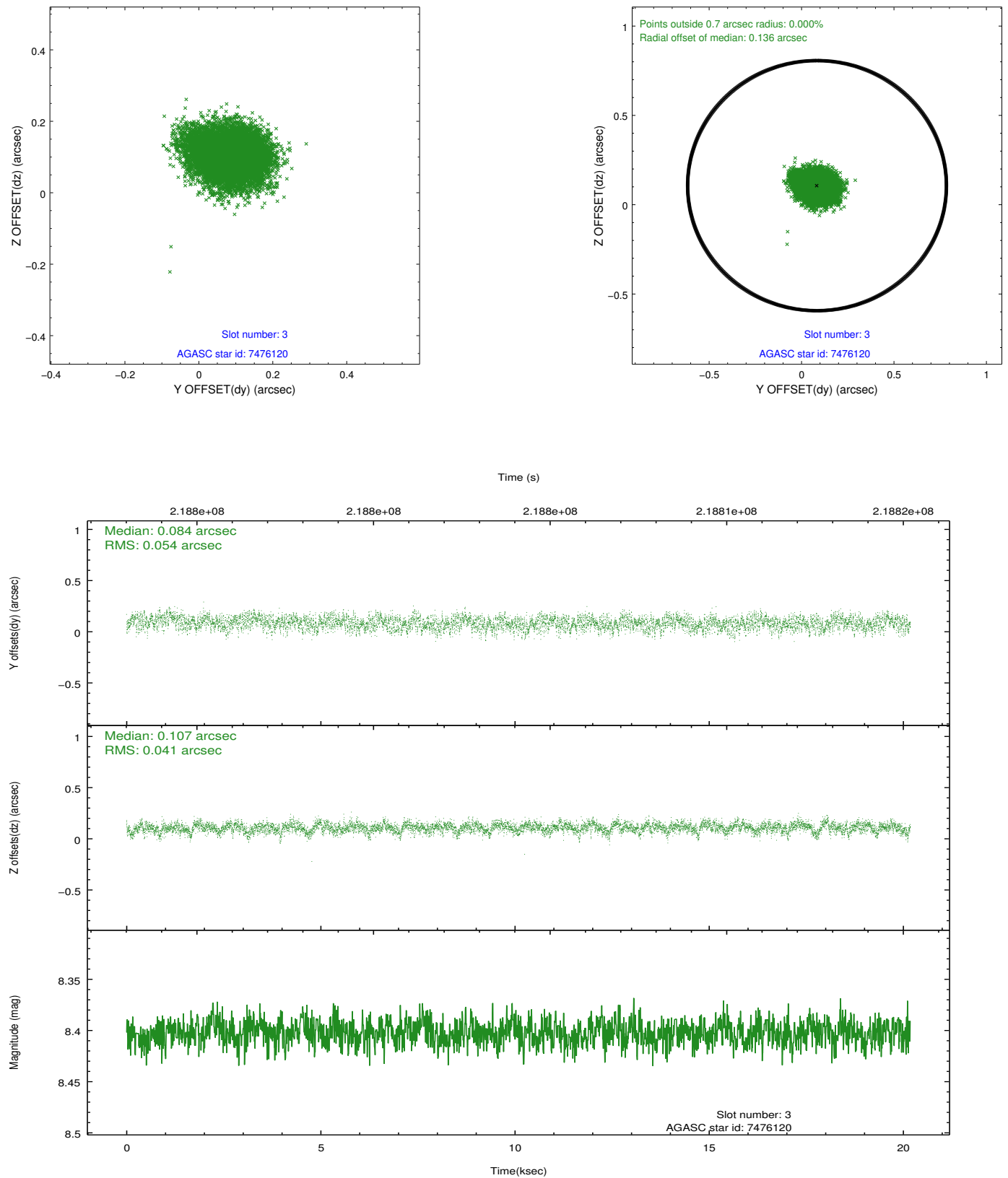


Slot Statistics

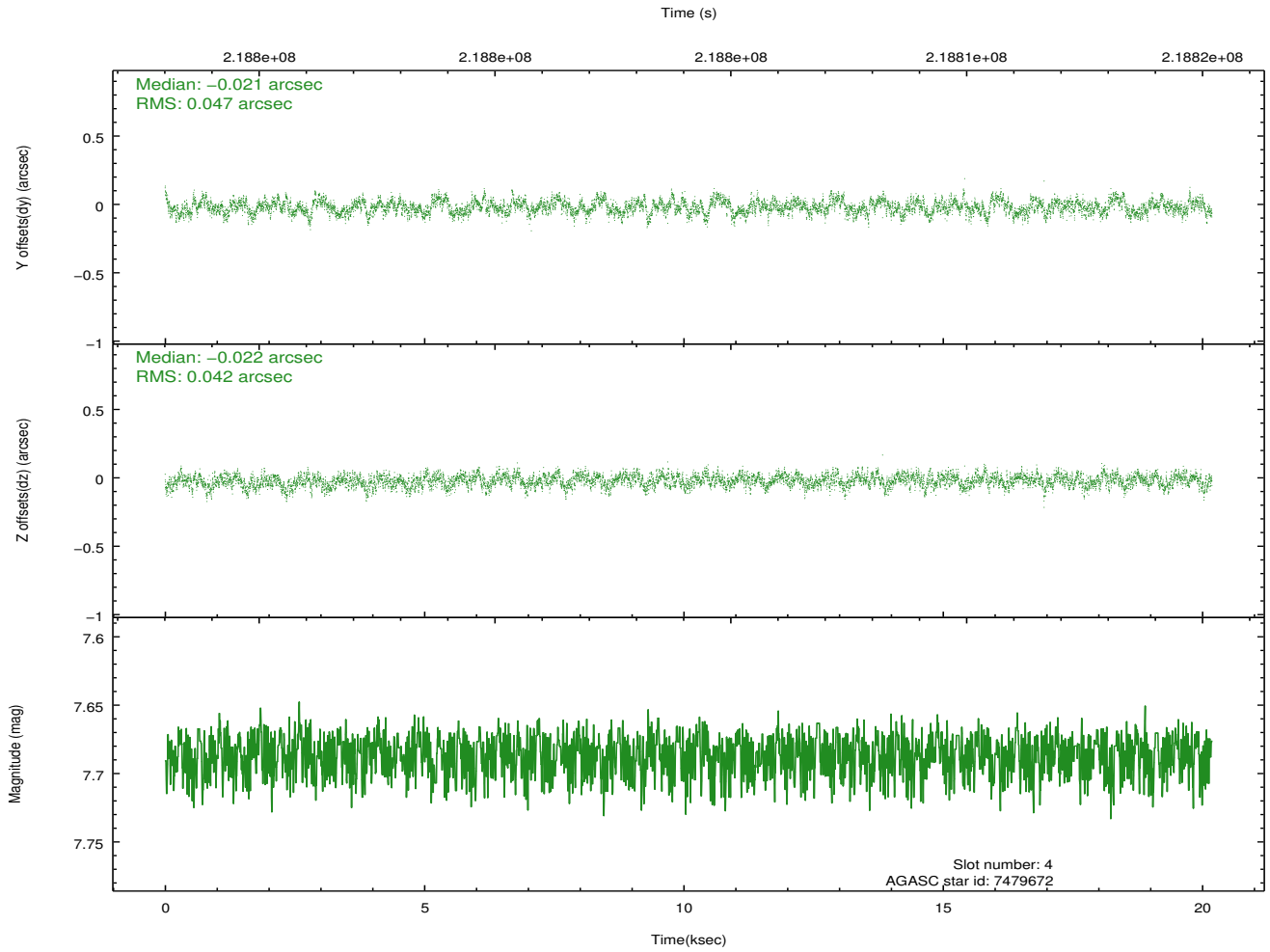
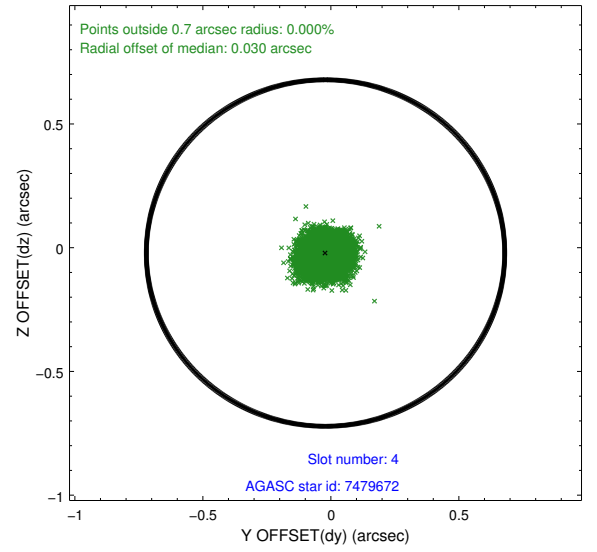
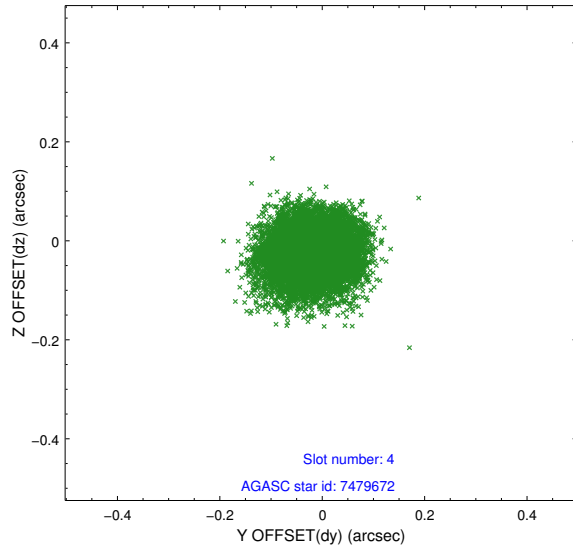
slot	status	id	mag	n_pts	med_dy	med_dz	dr1	dr2	ra	dec	mean_y	mean_z
0	FID	HRC-I-1	6.98	4923	-0.001	0.066	0.008	0.013	0.000000	0.000000	-763.89	-1296.05
1	FID	HRC-I-2	7.02	4923	0.143	-0.123	0.008	0.015	0.000000	0.000000	848.73	-1298.09
2	FID	HRC-I-3	7.06	4922	-0.024	-0.033	0.008	0.014	0.000000	0.000000	-1192.20	1008.15
3	GUIDE	7476120	8.40	9842	0.084	0.107	0.072	0.117	51.598894	1.672348	2095.71	-1725.71
4	GUIDE	7479672	7.69	9846	-0.021	-0.022	0.067	0.107	51.109761	2.090101	-210.26	-1929.05
5	GUIDE	7480696	8.92	9843	-0.124	0.055	0.080	0.131	50.675704	2.468615	-2276.89	-2088.57
6	GUIDE	7482088	7.82	9846	0.136	-0.070	0.066	0.105	51.807690	2.280173	1059.41	342.27
7	GUIDE	7867360	9.16	9845	-0.071	-0.067	0.087	0.142	51.860417	2.901354	-404.63	2043.55

2.4 Star Slots

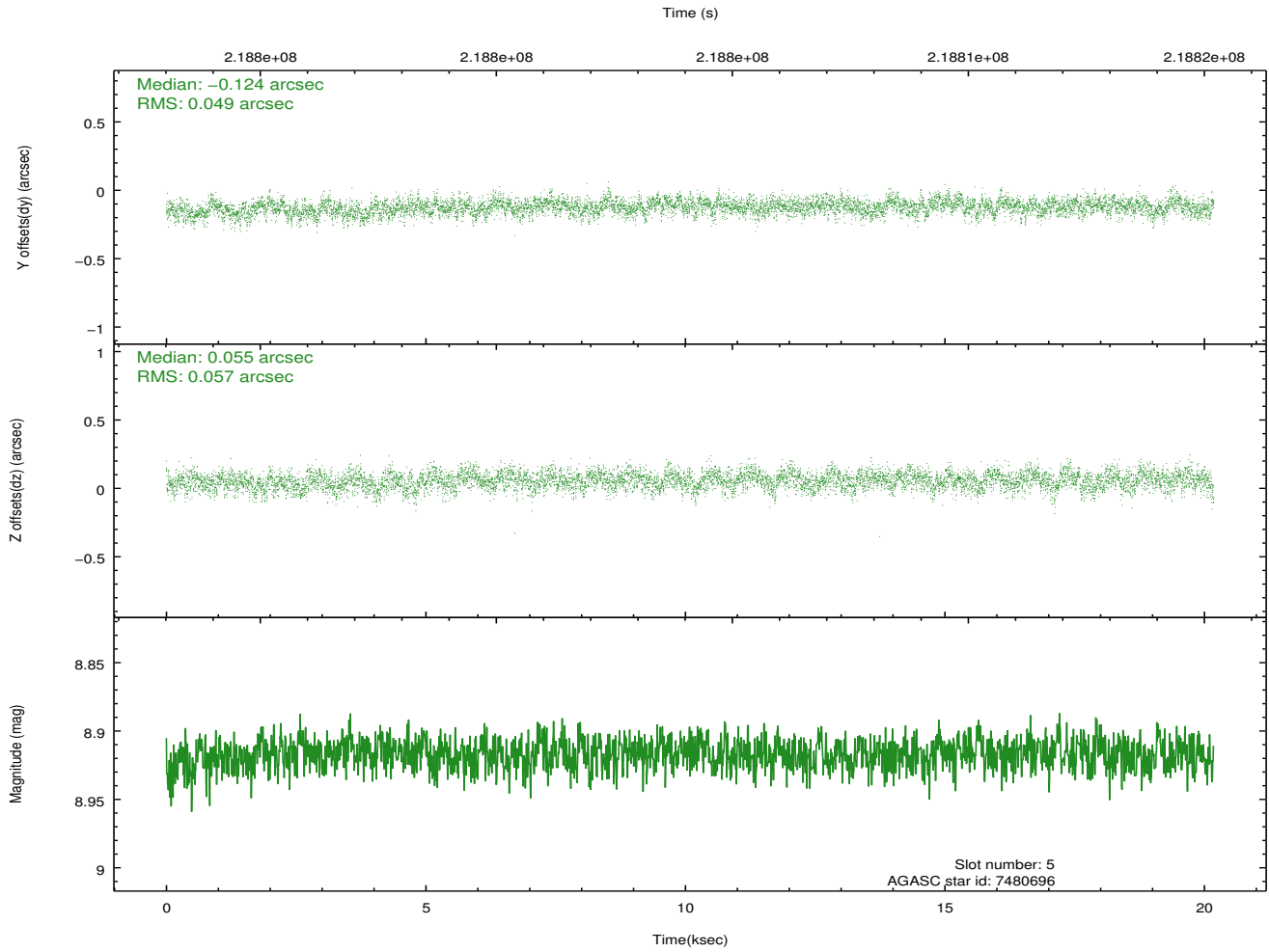
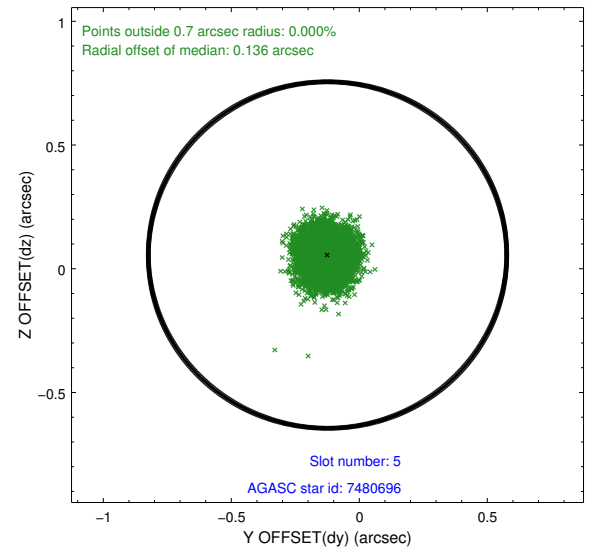
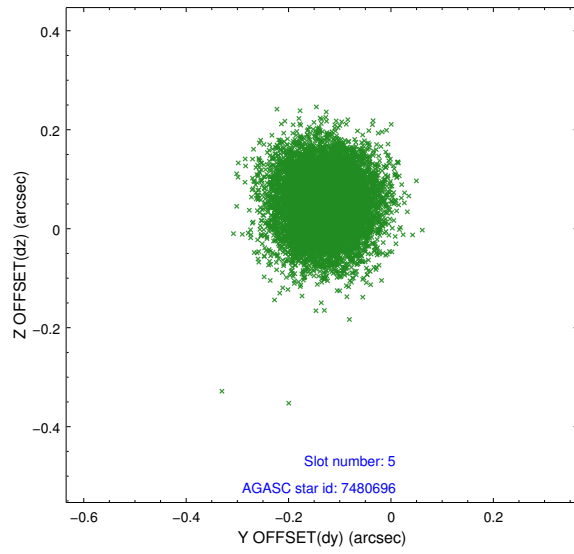
2.4.1 Slot 3



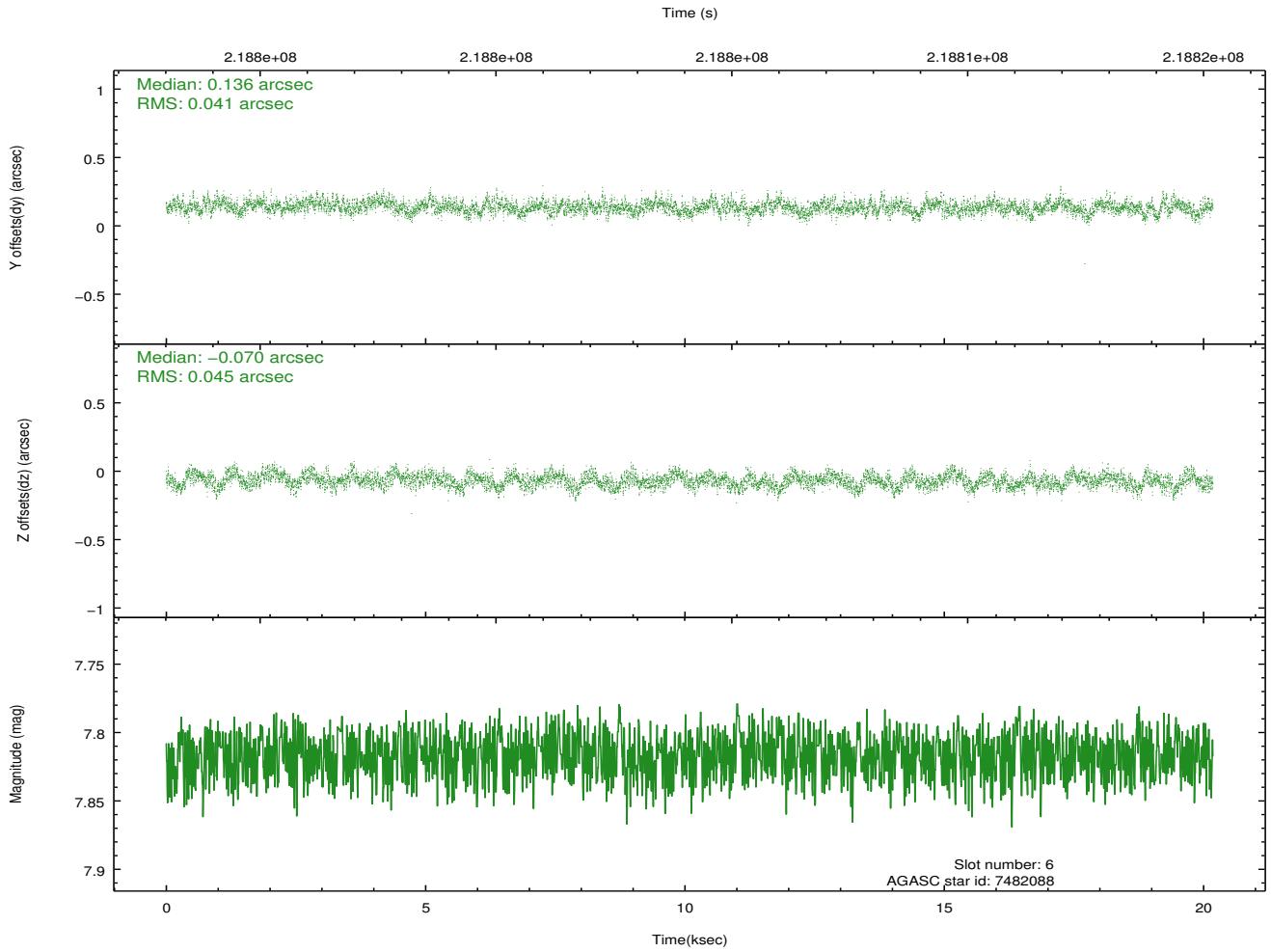
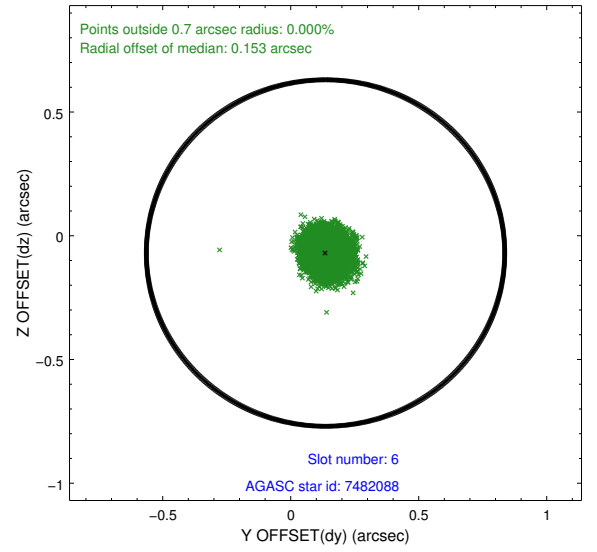
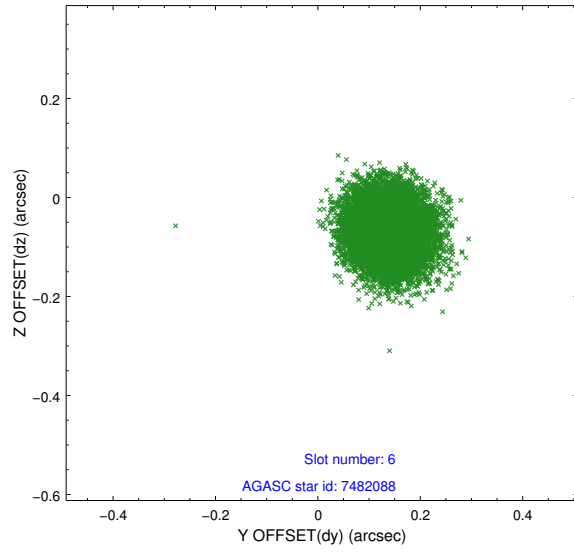
2.4.2 Slot 4



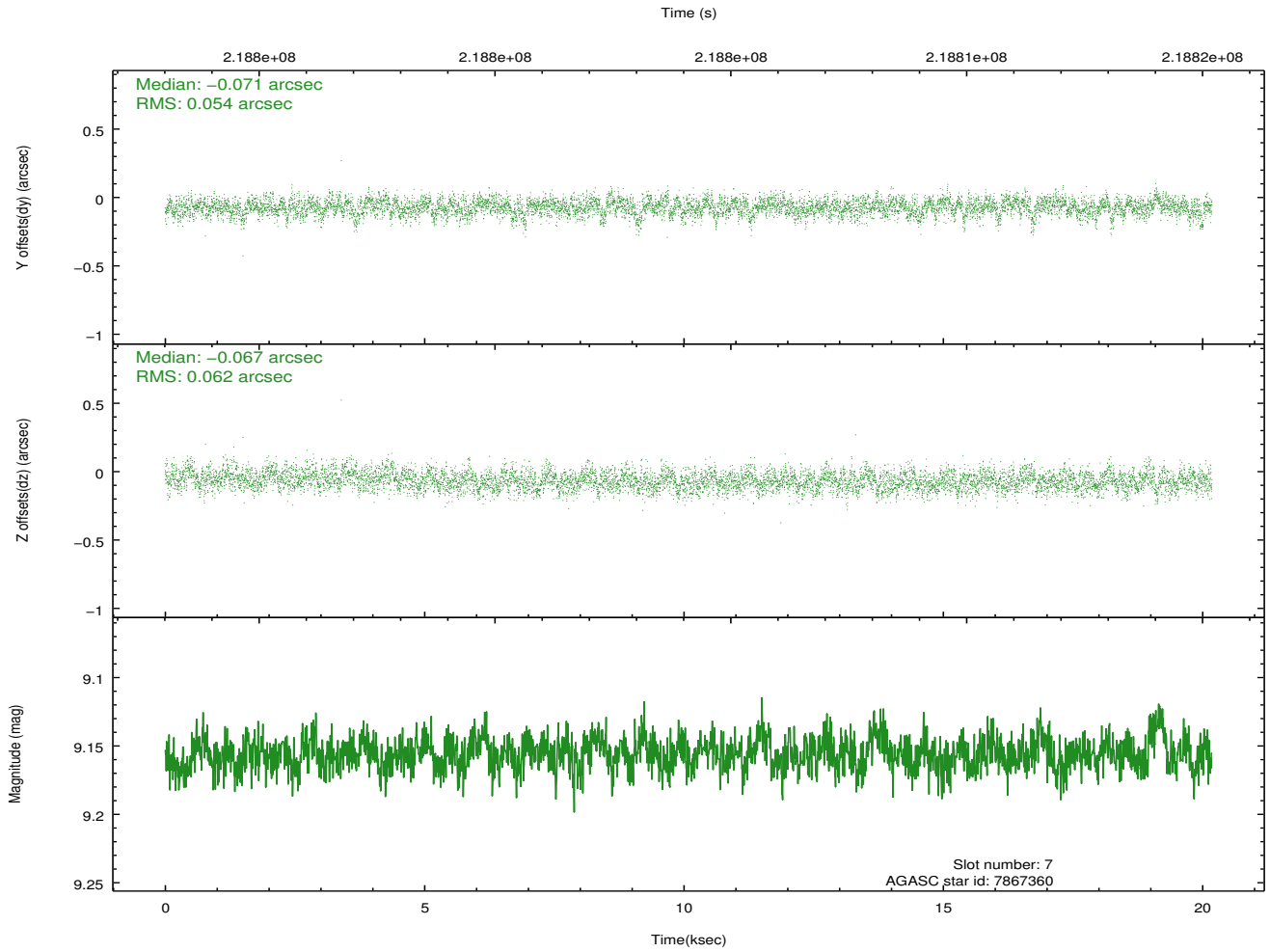
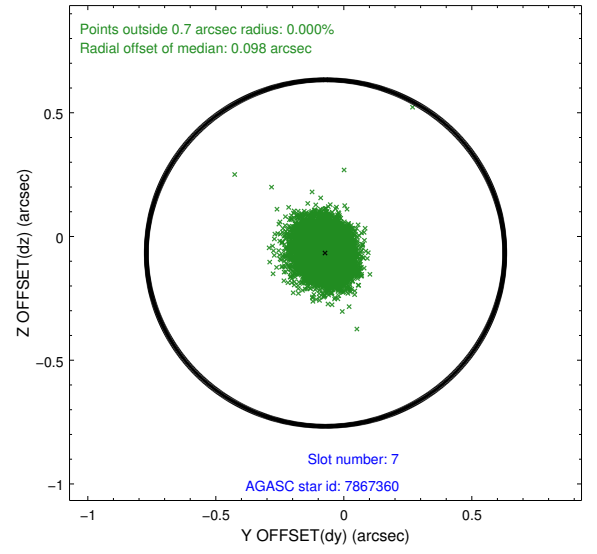
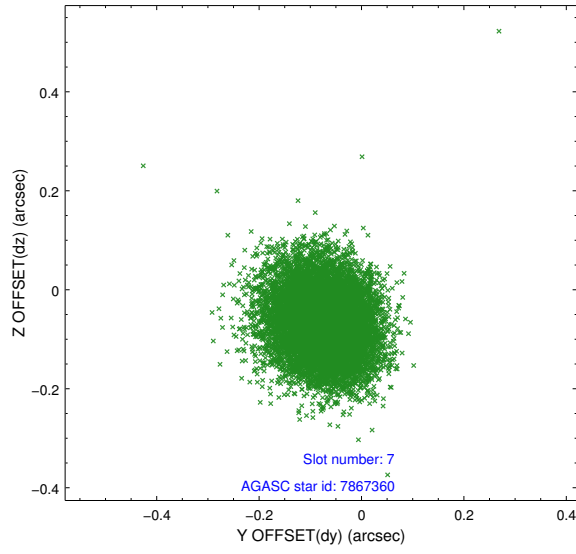
2.4.3 Slot 5



2.4.4 Slot 6

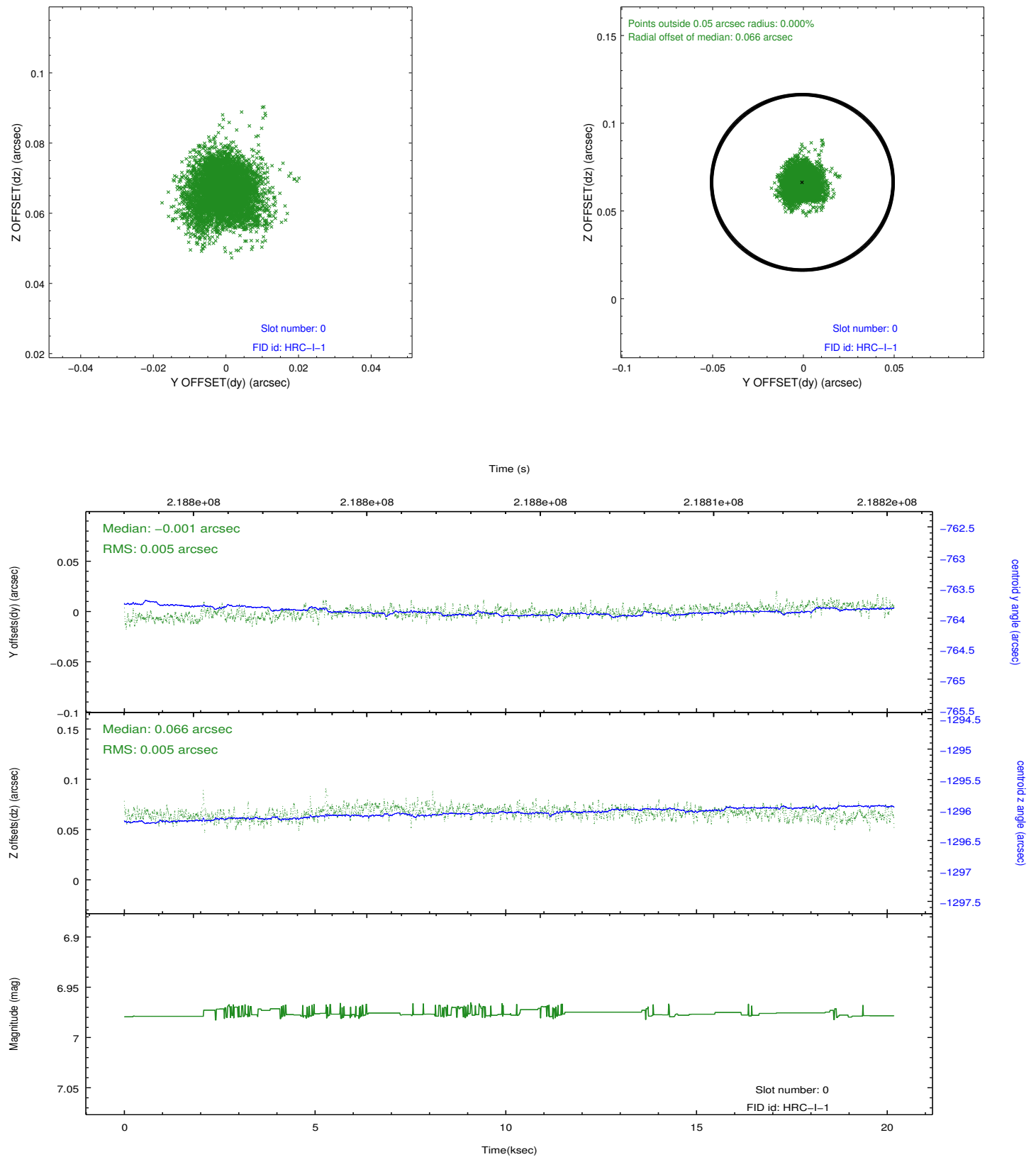


2.4.5 Slot 7

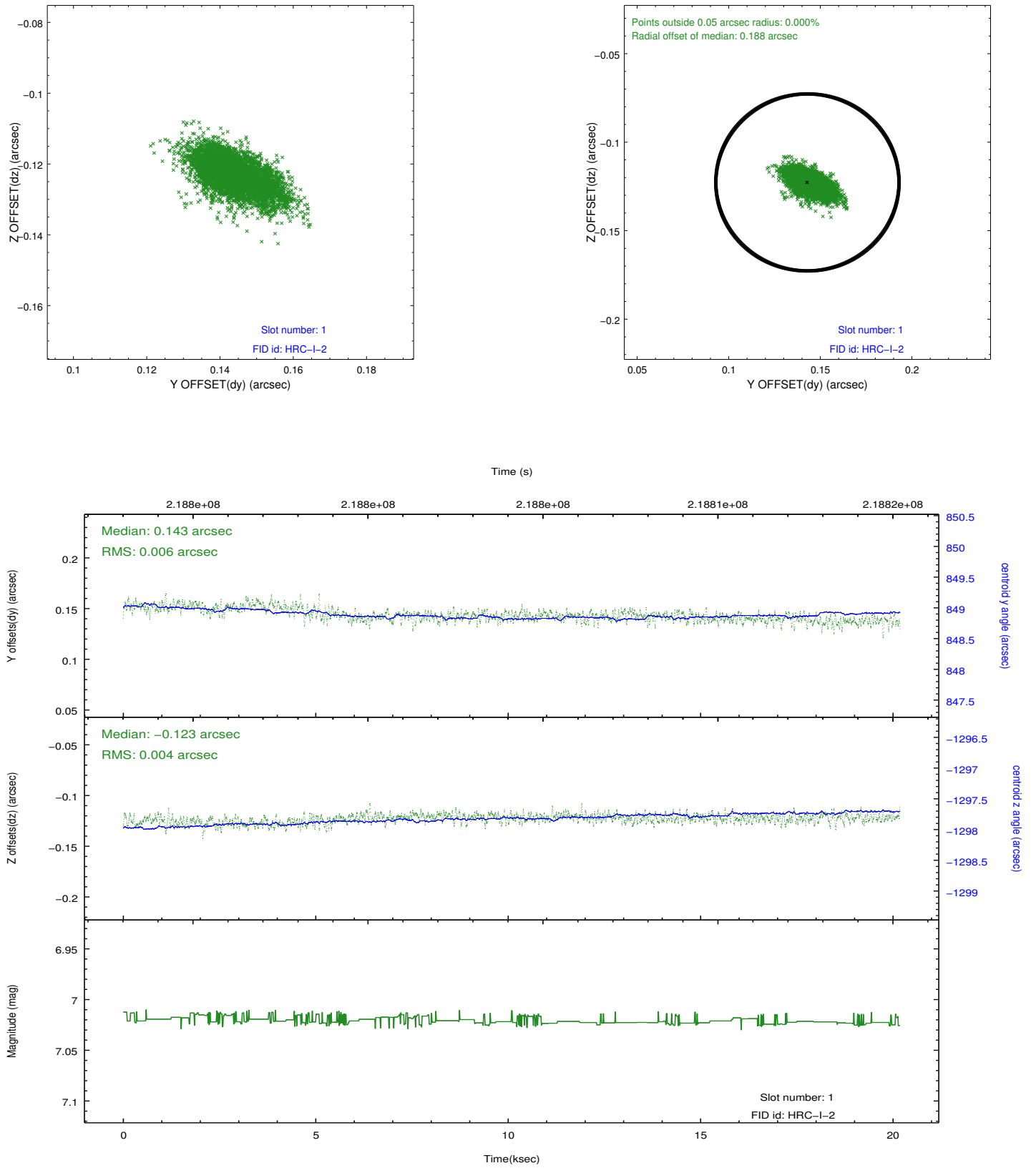


2.5 FID Slots

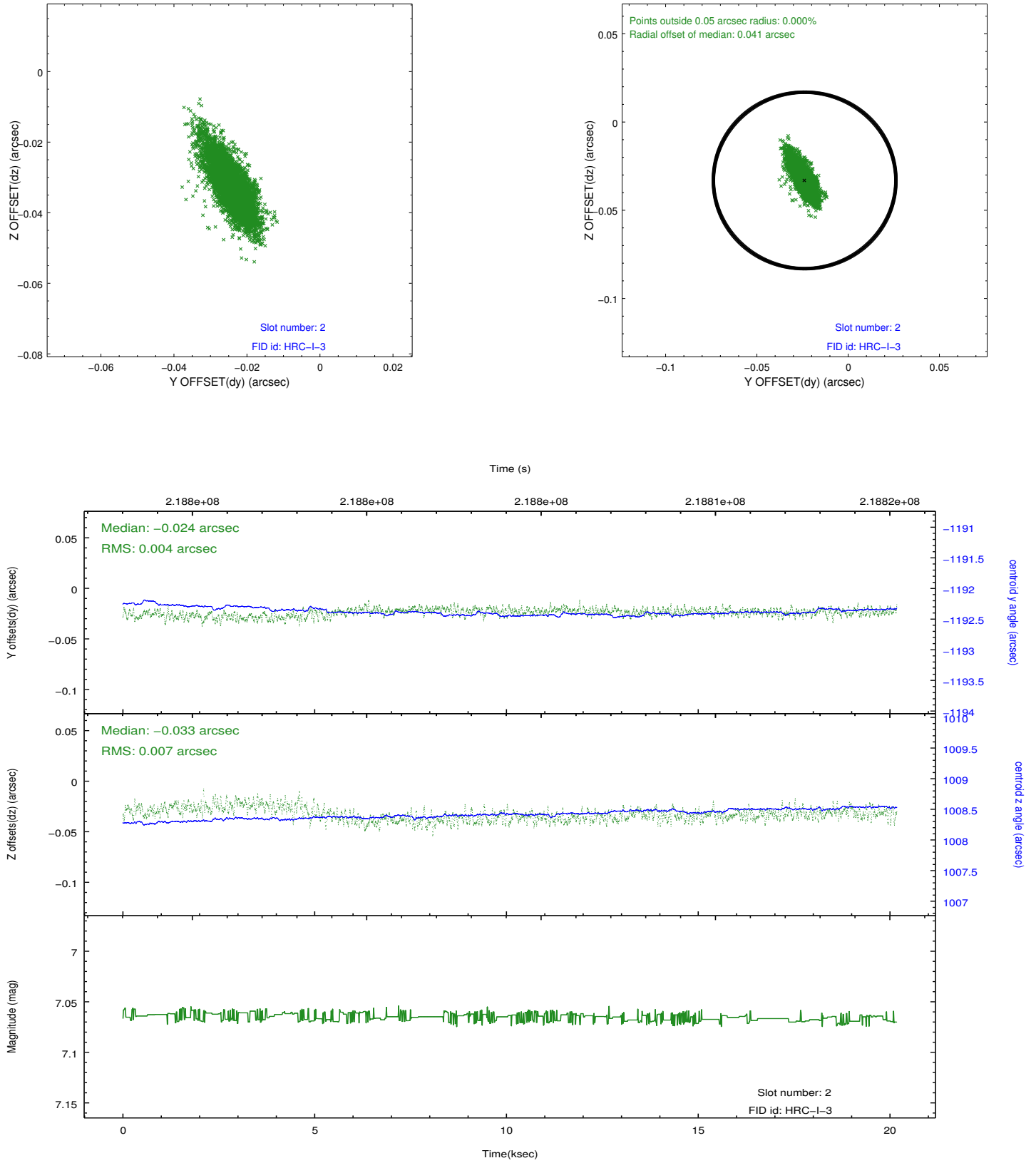
2.5.1 Slot 0



2.5.2 Slot 1



2.5.3 Slot 2



A Summary

A.1 Status

V&V Scientist	Beth Sundheim
V&V Date (YYYY-MM-DD)	2012.12.23
V&V Edition	1
V&V Disposition and Status	OK
V&V Charge Time	20.1832759

A.2 Comments