

# V&V Reference Report

## L2 ASCDS Version : 8.4.5

Observation 4839 - L2 Version 3  
Chandra X-Ray Center

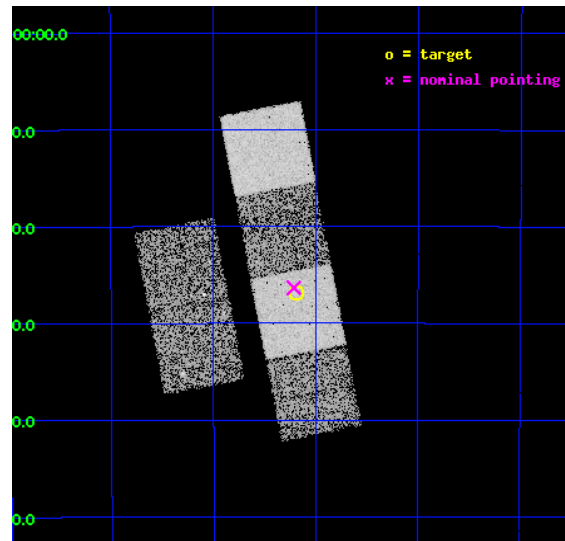
L2 Processing Date : Dec 3 2012

## Contents

<b>1</b>	<b>Front</b>	<b>2</b>
<b>2</b>	<b>OBI</b>	<b>3</b>
2.1	OBI . . . . .	3
2.1.1	Images . . . . .	3
2.1.2	Bias . . . . .	3
2.1.3	Parameters . . . . .	4
2.1.4	Events . . . . .	4
2.2	Compared Parameters . . . . .	5
2.3	Aspect . . . . .	6
2.4	Star Slots . . . . .	9
2.4.1	Slot 3 . . . . .	9
2.4.2	Slot 4 . . . . .	10
2.4.3	Slot 5 . . . . .	11
2.4.4	Slot 6 . . . . .	12
2.4.5	Slot 7 . . . . .	13
2.5	FID Slots . . . . .	14
2.5.1	Slot 0 . . . . .	14
2.5.2	Slot 1 . . . . .	15
2.5.3	Slot 2 . . . . .	16
<b>A</b>	<b>Summary</b>	<b>17</b>
A.1	Status . . . . .	17
A.2	Comments . . . . .	17

# 1 Front

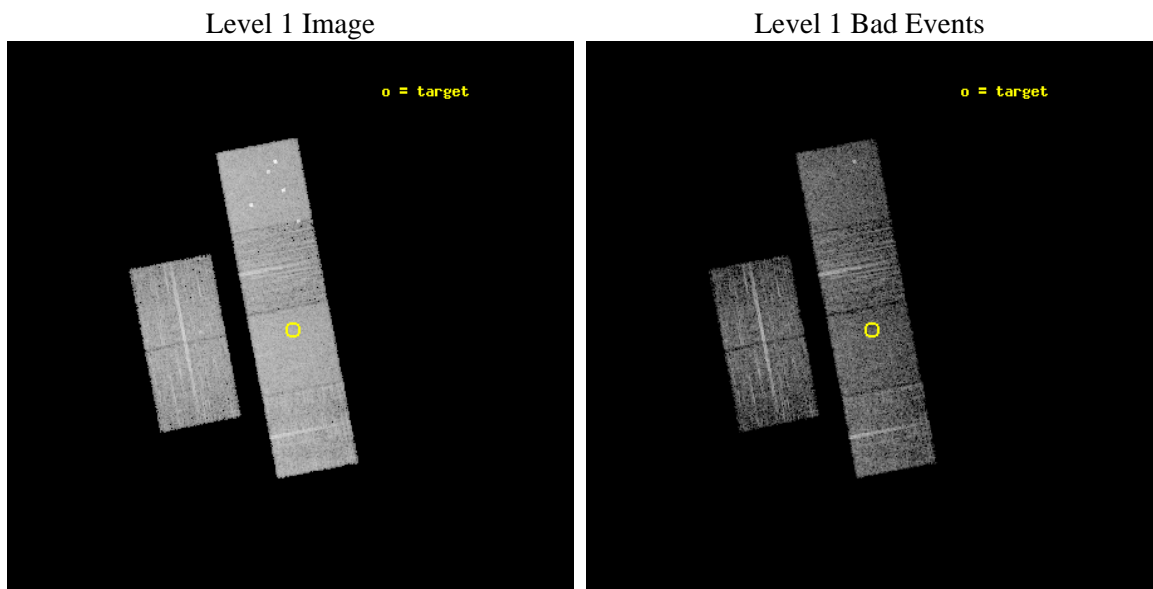
seq_num	700921	Sequence number
obs_id	4839	Observation id
title	Constraining the Hard-X-ray Through Submm SEDs of a Complete Sample of Broad Absorption Line Quasars	Proposal title
observer	Dr. Sarah Gallagher	Principal investigator
object	LBQS 2116-4439	Source name
dtcycle	0	&#160
cycle	P	events from which exps? Prim/Second/Both
ra_targ	320.048333	Observer's specified target RA [deg]
dec_targ	-44.448333	Observer's specified target Dec [deg]
ra_nom	320.05318160164	Nominal RA [deg]
dec_nom	-44.439214221892	Nominal Dec [deg]
roll_nom	79.144228101317	Nominal Roll [deg]
revision	3	Processing version of data
ontime	5724.0468310714	Sum of GTIs [s]
livetime	5651.5655034891	Livetime [s]
ontime2	5724.0878710747	Sum of GTIs [s]
ontime3	5723.9237110615	Sum of GTIs [s]
ontime5	5724.0057910681	Sum of GTIs [s]
ontime6	5723.9647510648	Sum of GTIs [s]
ontime7	5724.0468310714	Sum of GTIs [s]
ontime8	5723.882671088	Sum of GTIs [s]
l2events	70548	Number of level 2 events



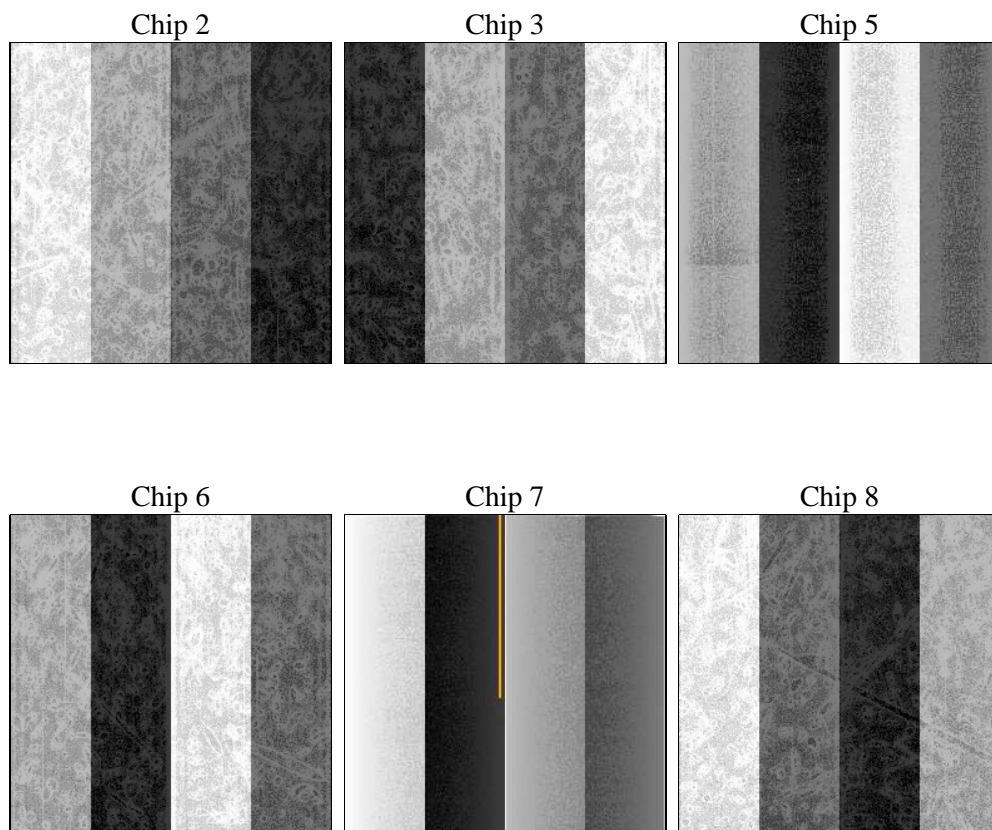
## 2 OBI

### 2.1 OBI

#### 2.1.1 Images



#### 2.1.2 Bias



### 2.1.3 Parameters

obi_num	0	Obi number	sched_exp_time	5767.128000	[s] Scheduled observation exposure time
ascdsver	8.4.5	Processing system revision	ontime	5724.0468310714	Sum of GTIs [s]
caldsver	4.5.2	&#160	ontime2	5724.0878710747	Sum of GTIs [s]
date	2012-12-03T05:05:09	Date and time of file creation	ontime3	5723.9237110615	Sum of GTIs [s]
revision	3	Processing version of data	ontime5	5724.0057910681	Sum of GTIs [s]
			ontime6	5723.9647510648	Sum of GTIs [s]
			ontime7	5724.0468310714	Sum of GTIs [s]
			ontime8	5723.882671088	Sum of GTIs [s]
			l1events	303447	Number of level 1 events

### 2.1.4 Events

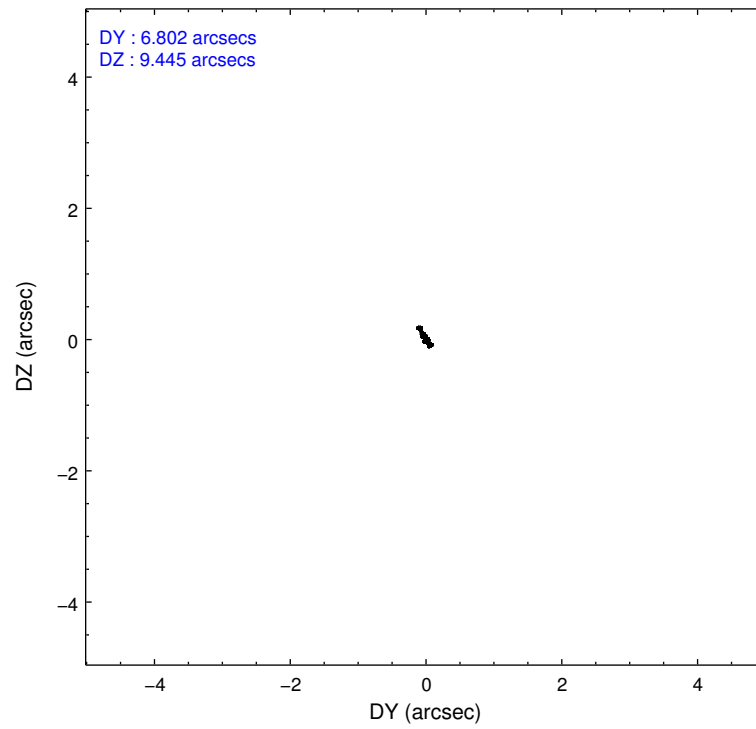
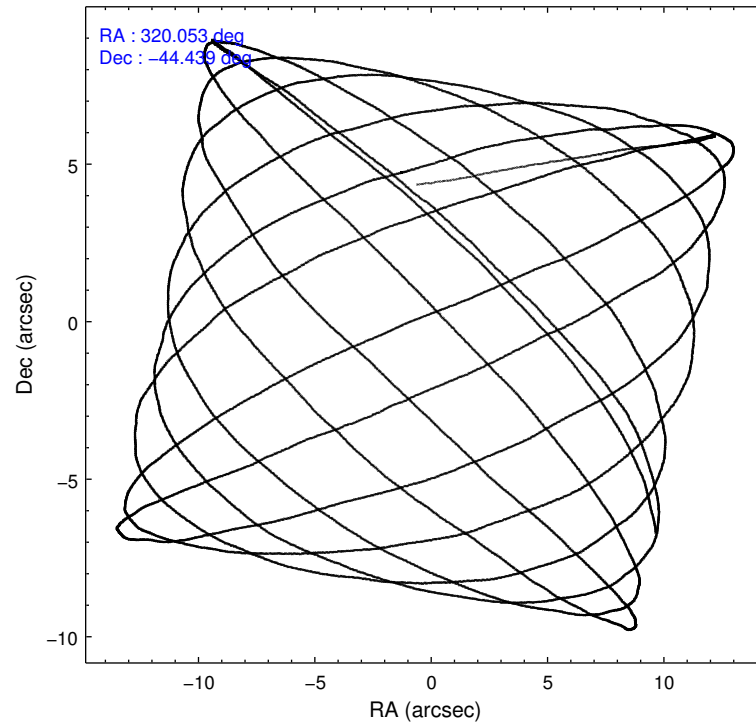
	ccd 2	ccd 3	ccd 5	ccd 6	ccd 7	ccd 8		ccd 2	ccd 3	ccd 5	ccd 6	ccd 7	ccd 8
level 1 events	42483	41022	64832	43372	58186	53552	grade 0 events	2726	2648	4551	2410	2287	4093
rejected events	37072	35534	33933	37913	33696	41365		6%	6%	7%	5%	3%	7%
rejected %	87%	86%	52%	87%	57%	77%	grade 1 events	34	30	78	19	50	42
								0%	0%	0%	0%	0%	0%
							grade 2 events	976	988	8961	1070	4821	2580
								2%	2%	13%	2%	8%	4%
							grade 3 events	472	459	1155	498	2243	1268
								1%	1%	1%	1%	3%	2%
							grade 4 events	465	490	1069	470	2233	1270
								1%	1%	1%	1%	3%	2%
							grade 5 events	1707	1811	4533	1853	5478	2489
								4%	4%	6%	4%	9%	4%
							grade 6 events	781	915	15193	1020	12937	2984
								1%	2%	23%	2%	22%	5%
							grade 7 events	35322	33681	29292	36032	28137	38826
								83%	82%	45%	83%	48%	72%

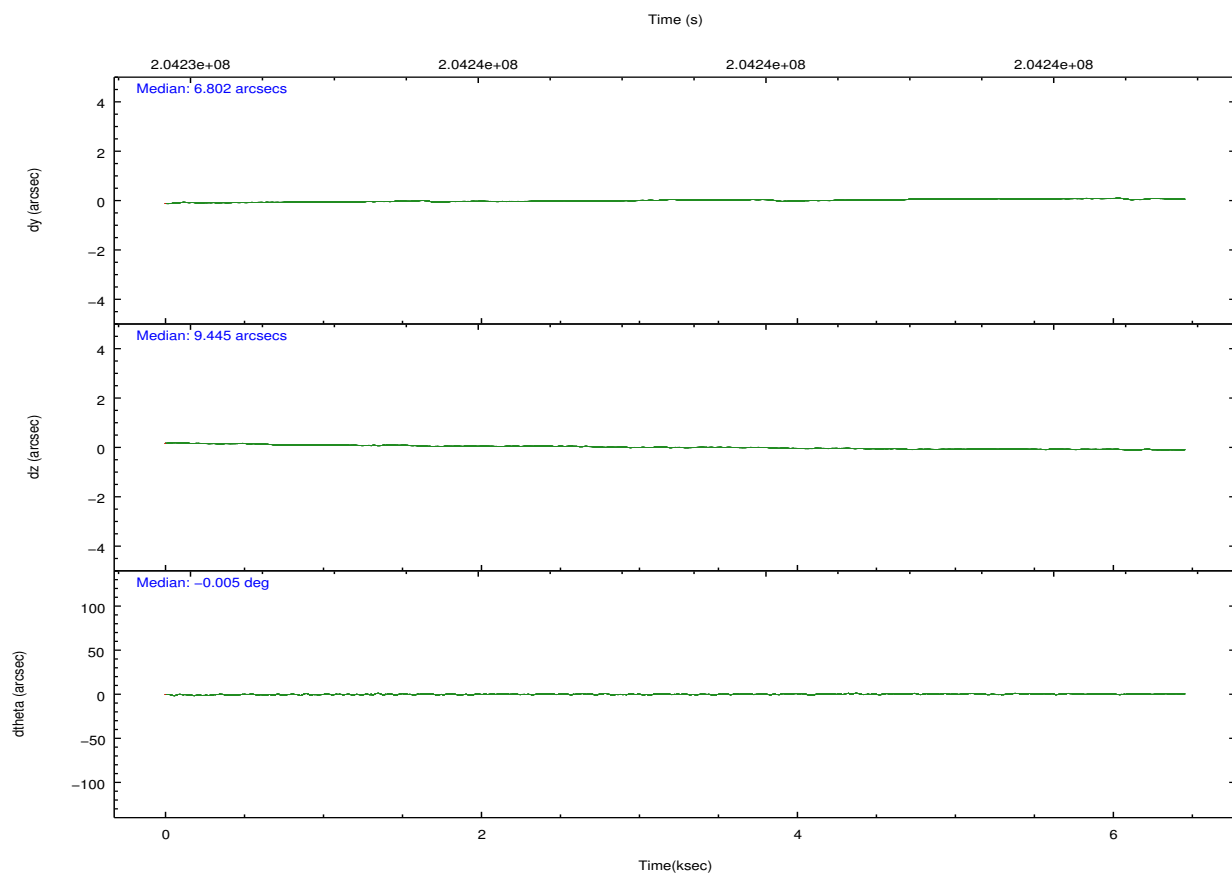
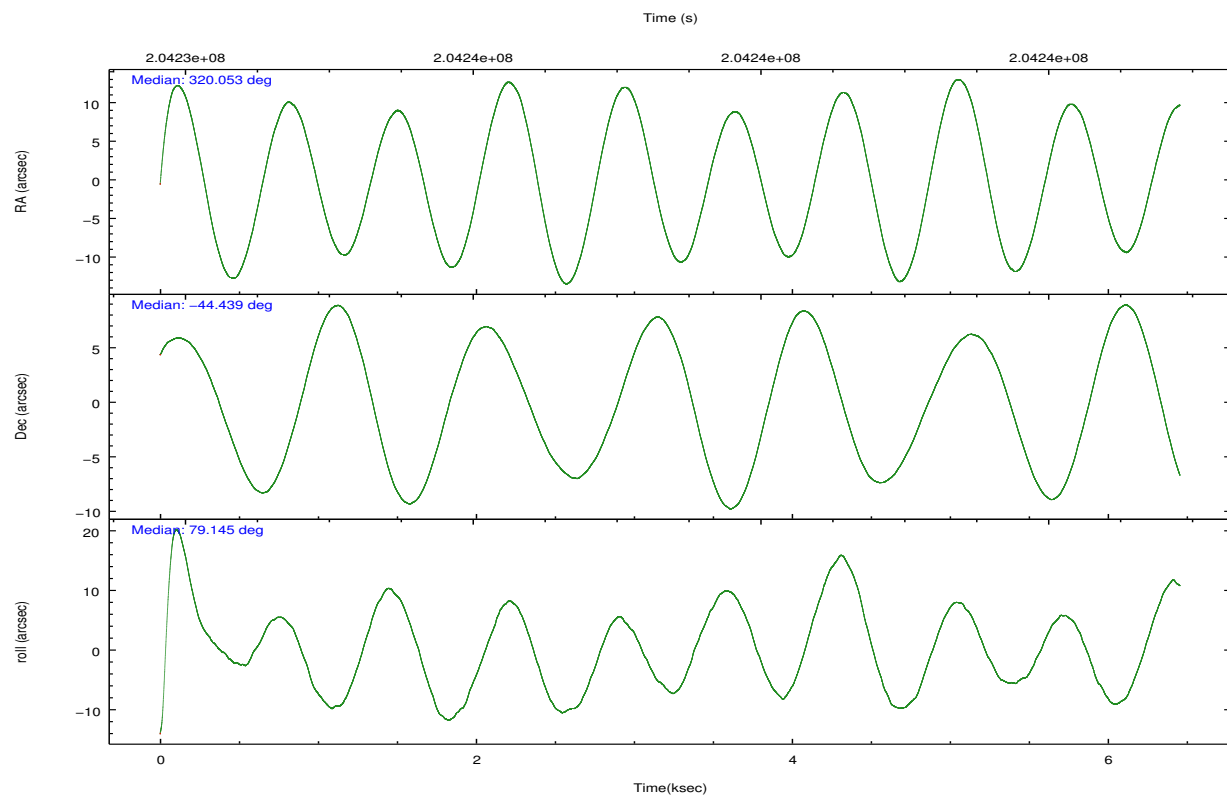


## 2.2 Compared Parameters

Parameter	Planned	Actual	Parameter	Planned	Actual
Instrument	ACIS	ACIS	Obspar format version number	7	7
Detector	ACIS-235678	ACIS-235678	Obspar file type	PREDICTED	ACTUAL
Grating	NONE	NONE	Obspar update status	NONE	UPDATED
Data mode	FAINT	FAINT	Number of optional ACIS chips dropped	0	0
Observation mode	POINTING	POINTING	On-chip summing requested	N	N
[deg] Pointing RA	320.066175	320.0531816016415	Subarray requested	NONE	NONE
[deg] Pointing Dec	-44.464906	-44.43921422189242	Alternating exposures requested	N	N
[deg] Pointing Roll	78.996758	79.14422810131705	[s] Primary exposure time	0.000000	3.2
[mm] SIM focus pos	-0.684267	-0.6828225247311905			
[mm] SIM defocus	0	0.001444936568705701			
[mm] SIM translation stage pos	-190.132523	-190.1400660498719			
[mm] SIM translation stage offset	0	0.00754346686406393			
[s] Observation start time (MET)	204234829.184000	204233618.89129			
Observation start date	2004-06-21T19:52:45	2004-06-21T19:33:38			
[s] Observation end time (MET)	204240596.184000	204240813.87911			
Observation end date	2004-06-21T21:28:52	2004-06-21T21:33:33			
Read mode	TIMED	TIMED			

## 2.3 Aspect



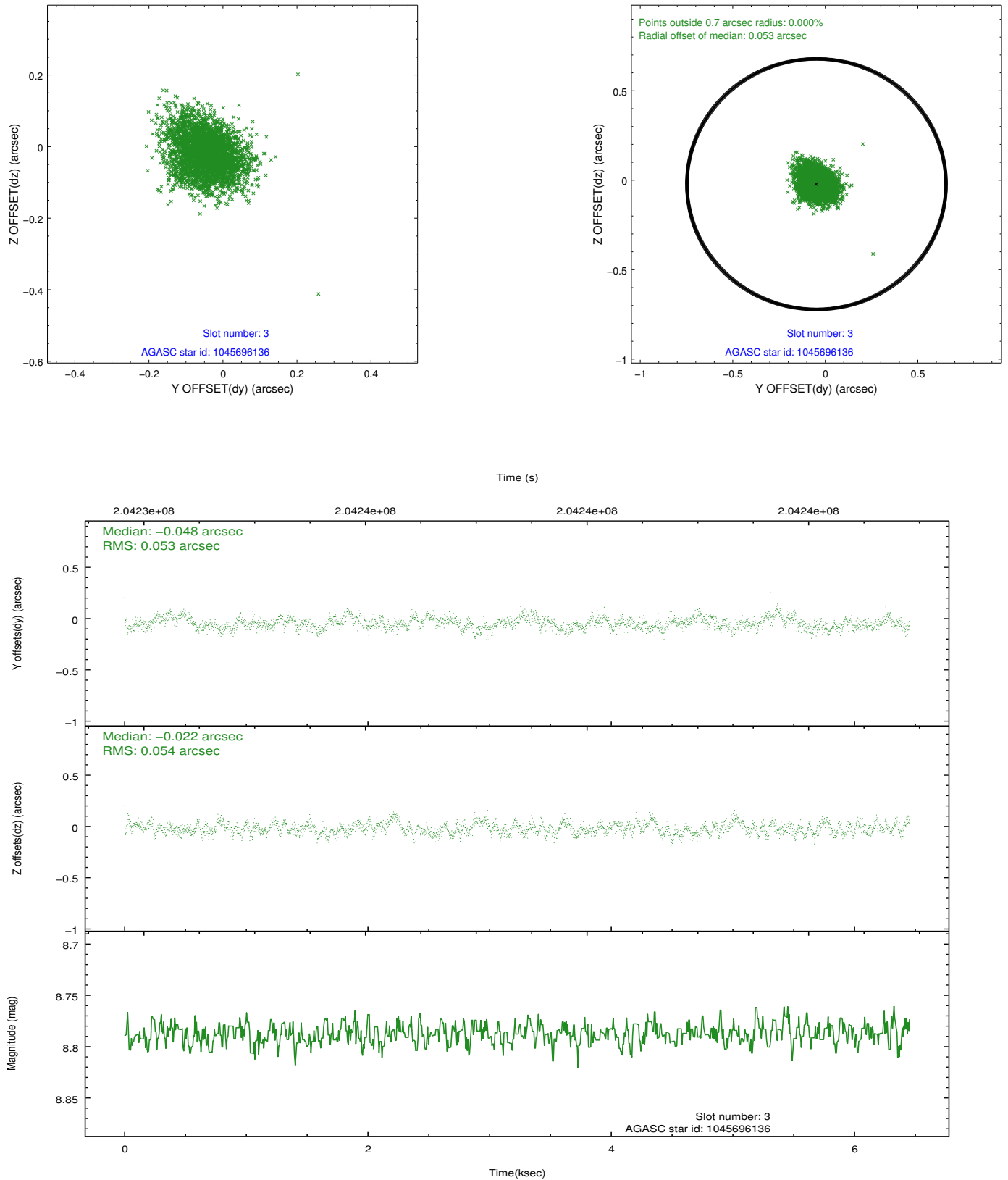


### Slot Statistics

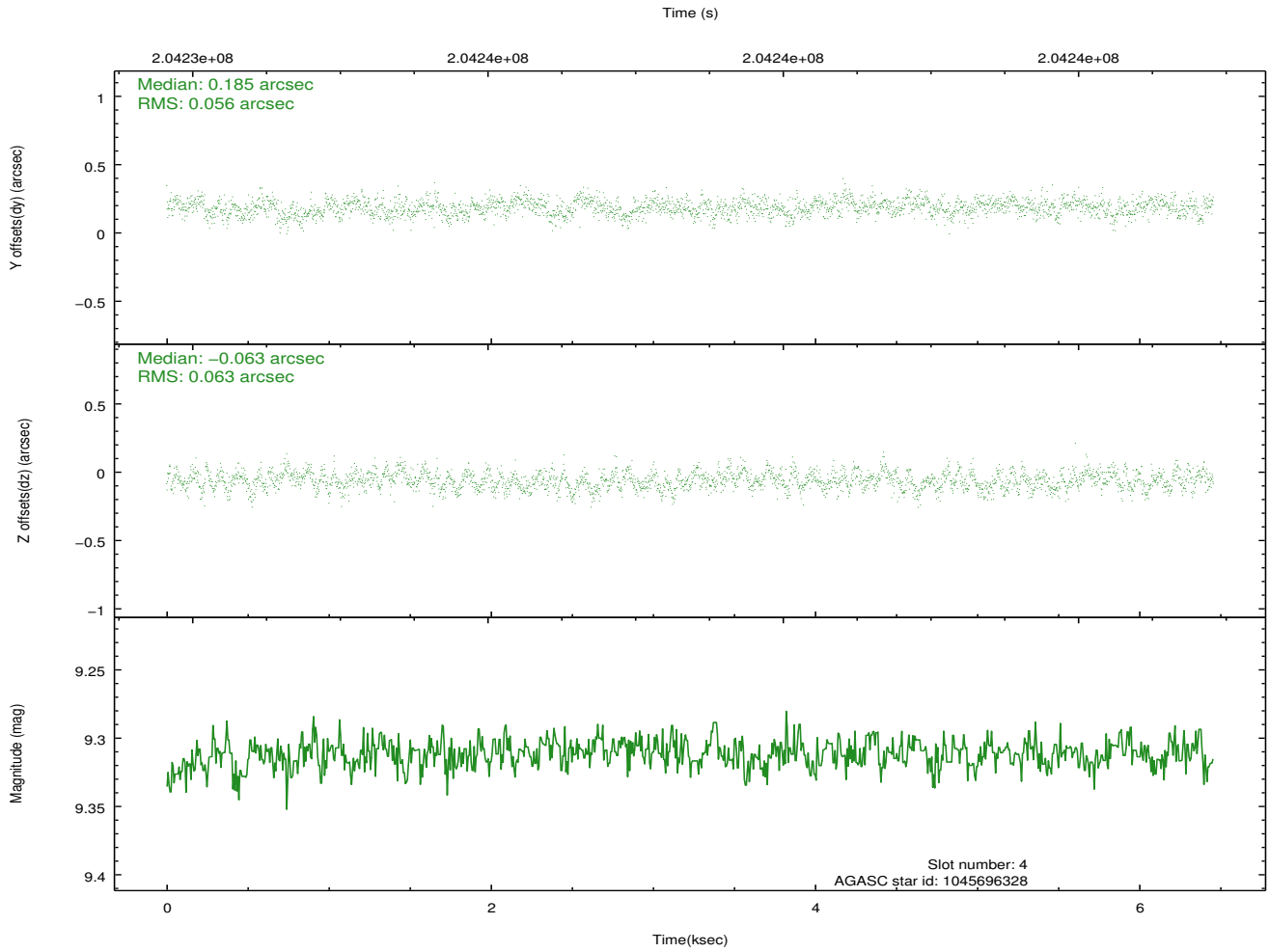
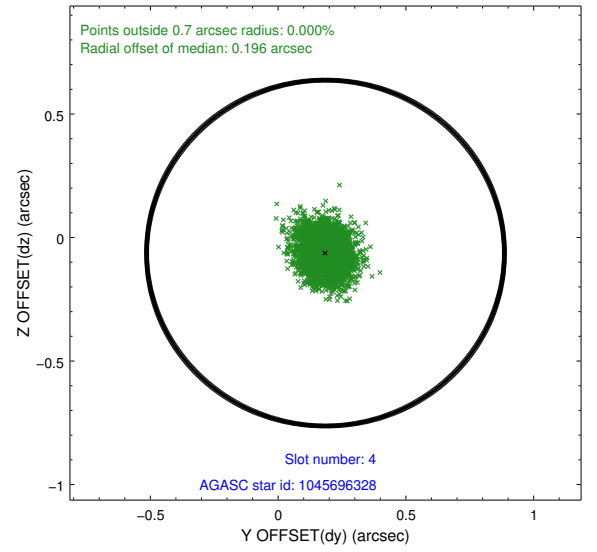
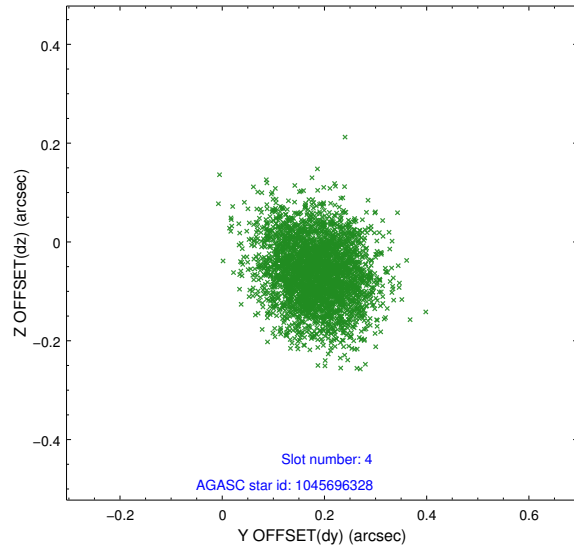
slot	status	id	mag	n_pts	med_dy	med_dz	dr1	dr2	ra	dec	mean_y	mean_z
0	FID	ACIS-S-2	7.10	1575	-0.042	-0.026	0.008	0.018	0.000000	0.000000	-759.57	-1730.72
1	FID	ACIS-S-4	7.20	1575	0.064	0.027	0.007	0.034	0.000000	0.000000	2153.38	176.91
2	FID	ACIS-S-5	7.23	1575	-0.055	0.007	0.008	0.019	0.000000	0.000000	-1811.28	171.55
3	GUIDE	1045696136	8.79	3149	-0.048	-0.022	0.080	0.130	319.762481	-44.279801	502.88	895.39
4	GUIDE	1045696328	9.31	3150	0.185	-0.063	0.090	0.146	319.356854	-44.995999	-2228.84	1406.62
5	GUIDE	1047396392	9.79	3149	0.013	-0.213	0.140	0.220	320.008382	-44.246607	742.24	296.69
6	GUIDE	1047400272	9.87	3144	-0.027	0.172	0.129	0.228	320.338940	-44.055003	1582.27	-410.95
7	GUIDE	1047401552	9.10	3147	-0.125	0.121	0.082	0.130	320.556709	-44.260143	961.64	-1101.34

## 2.4 Star Slots

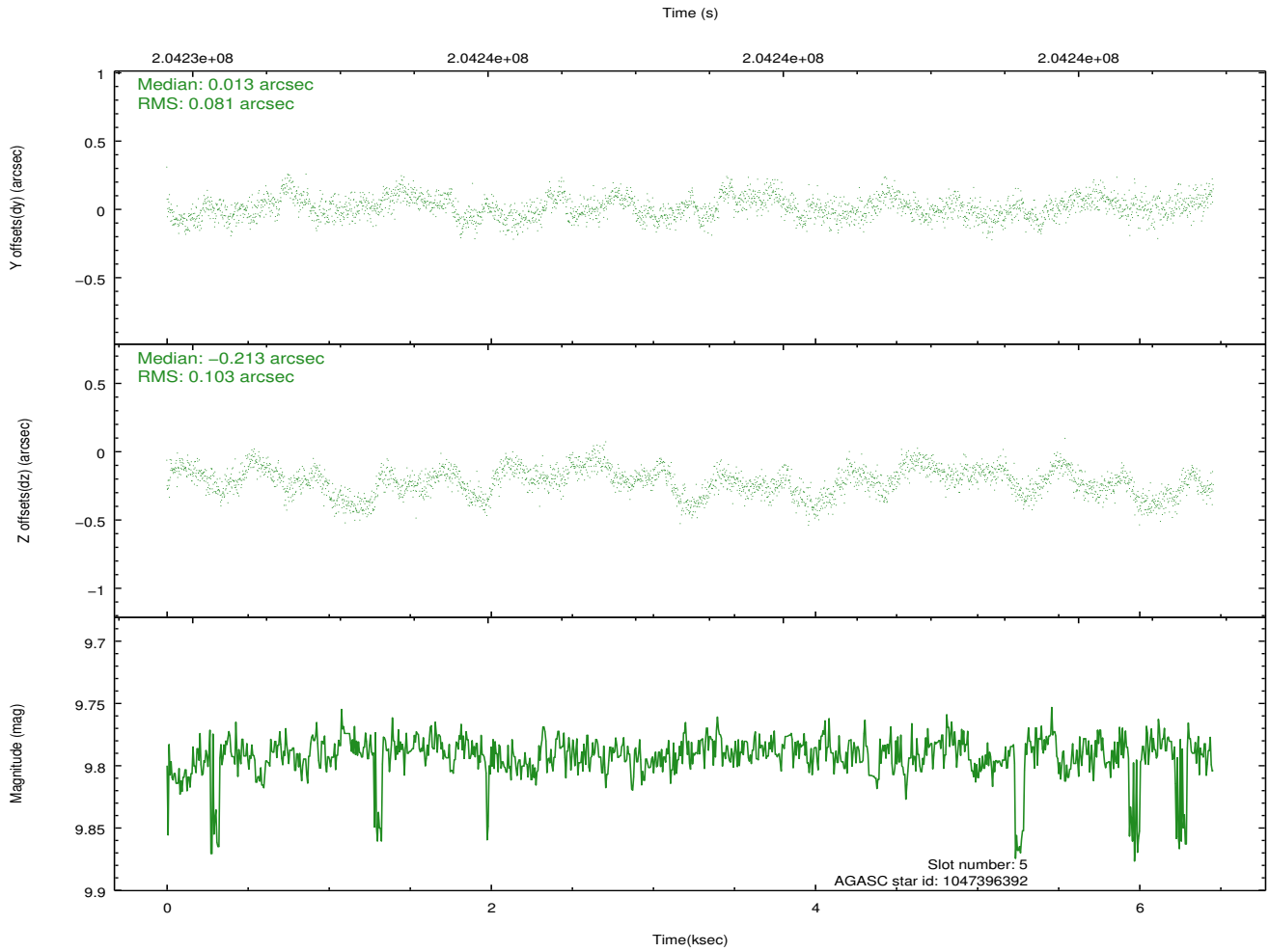
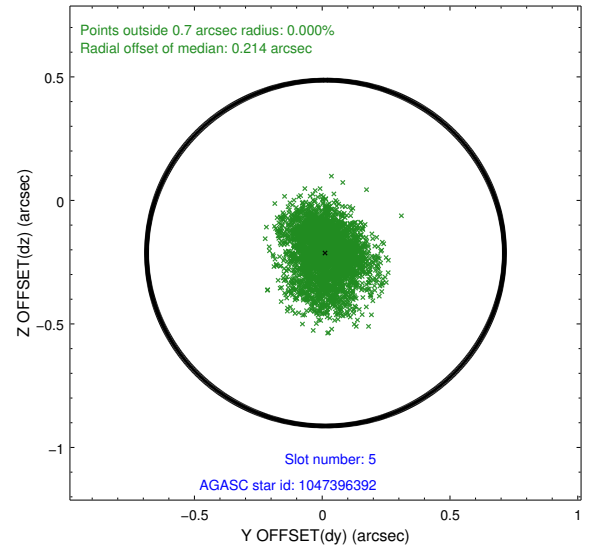
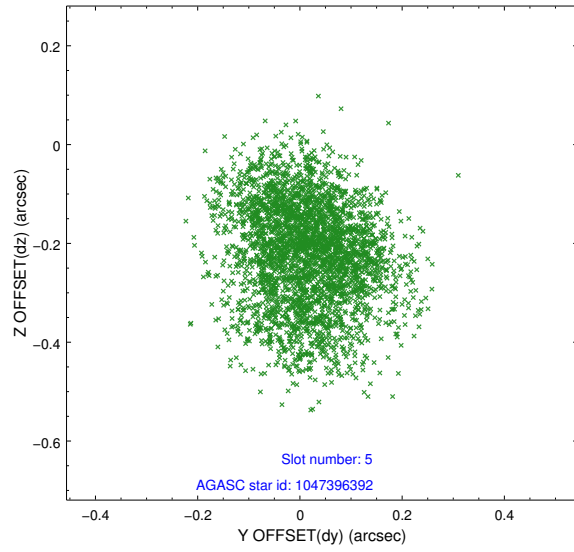
### 2.4.1 Slot 3



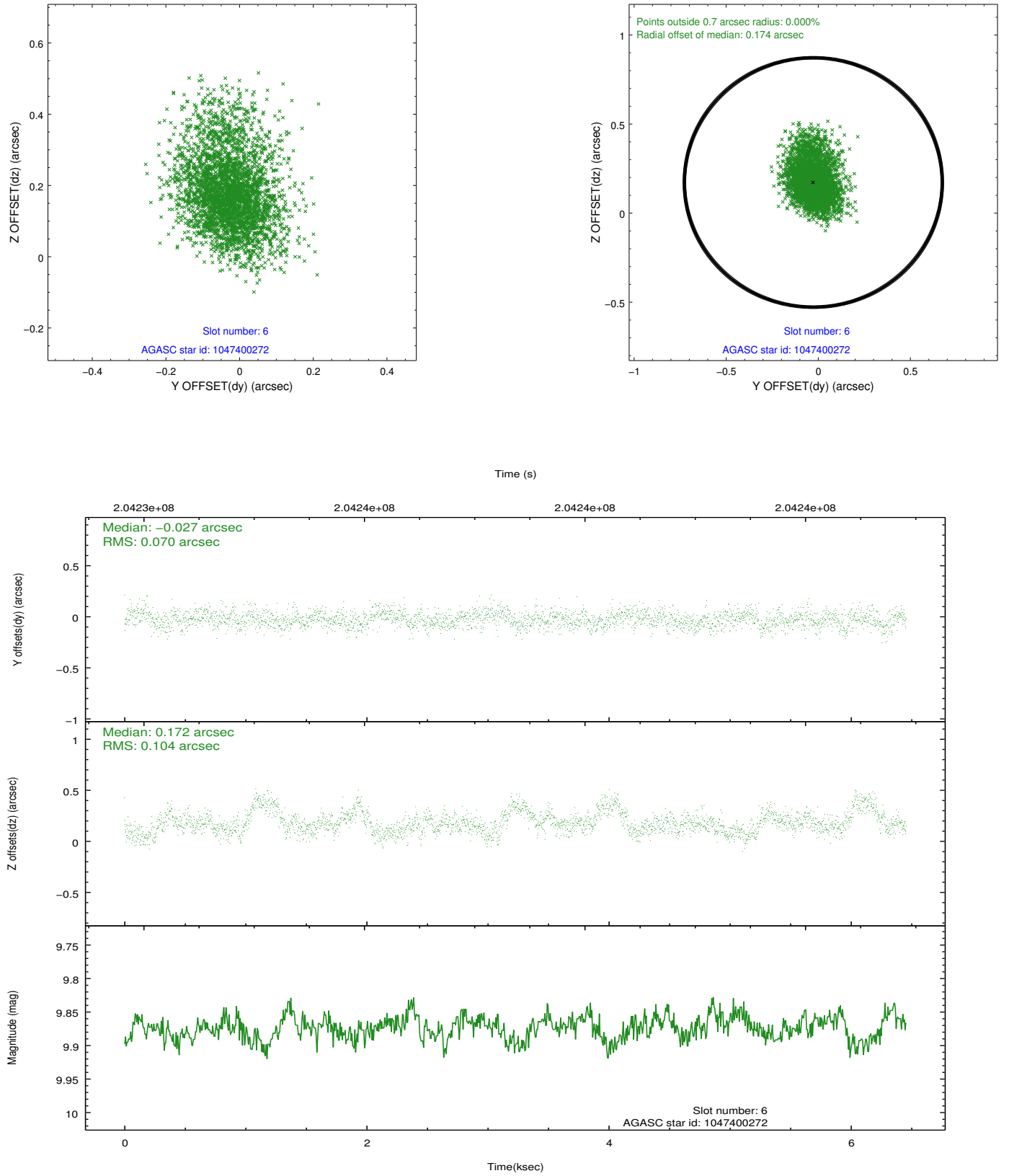
## 2.4.2 Slot 4



### 2.4.3 Slot 5

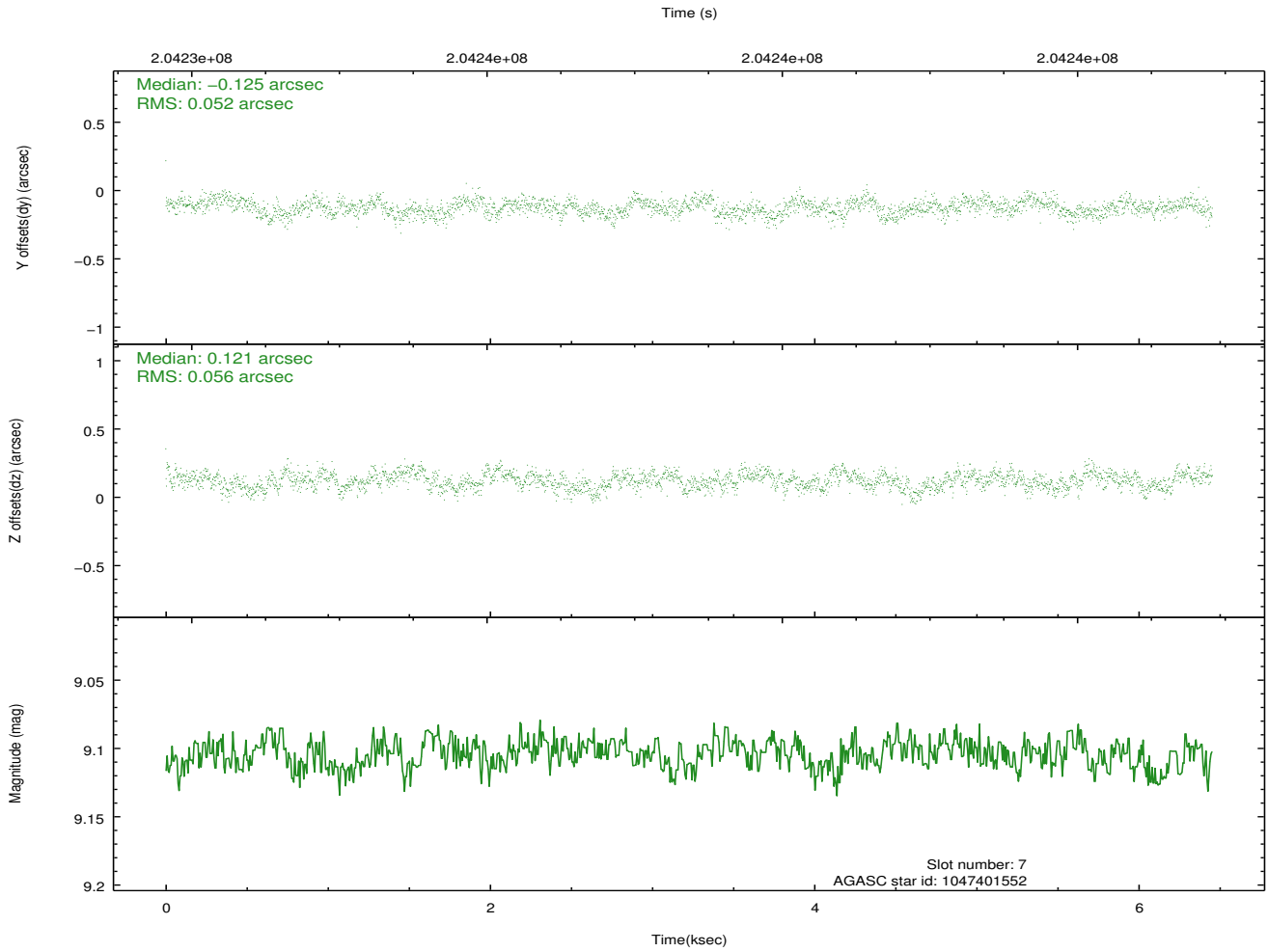
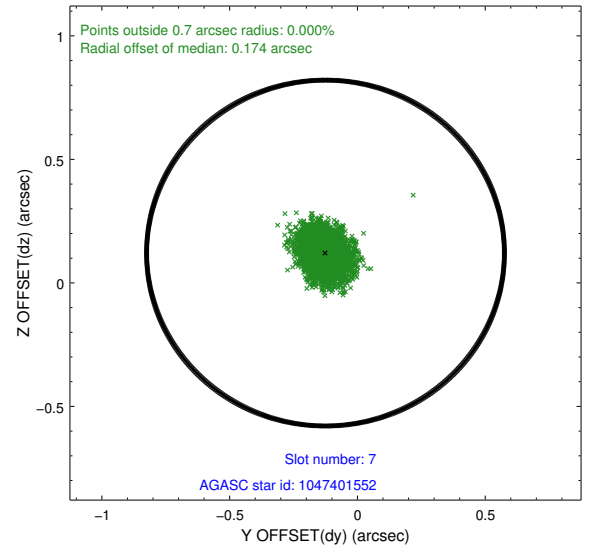
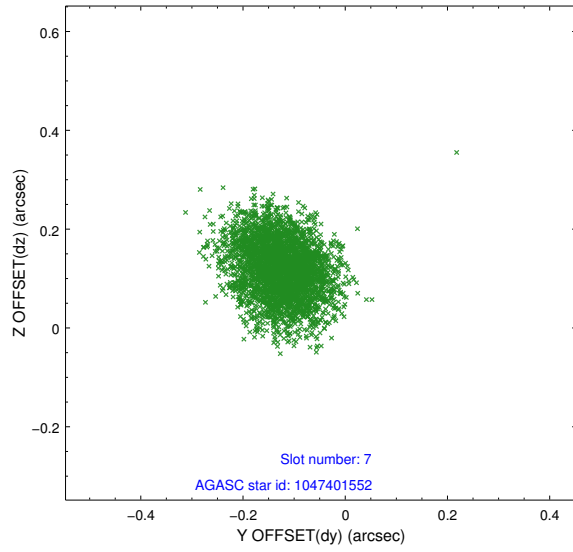


## 2.4.4 Slot 6



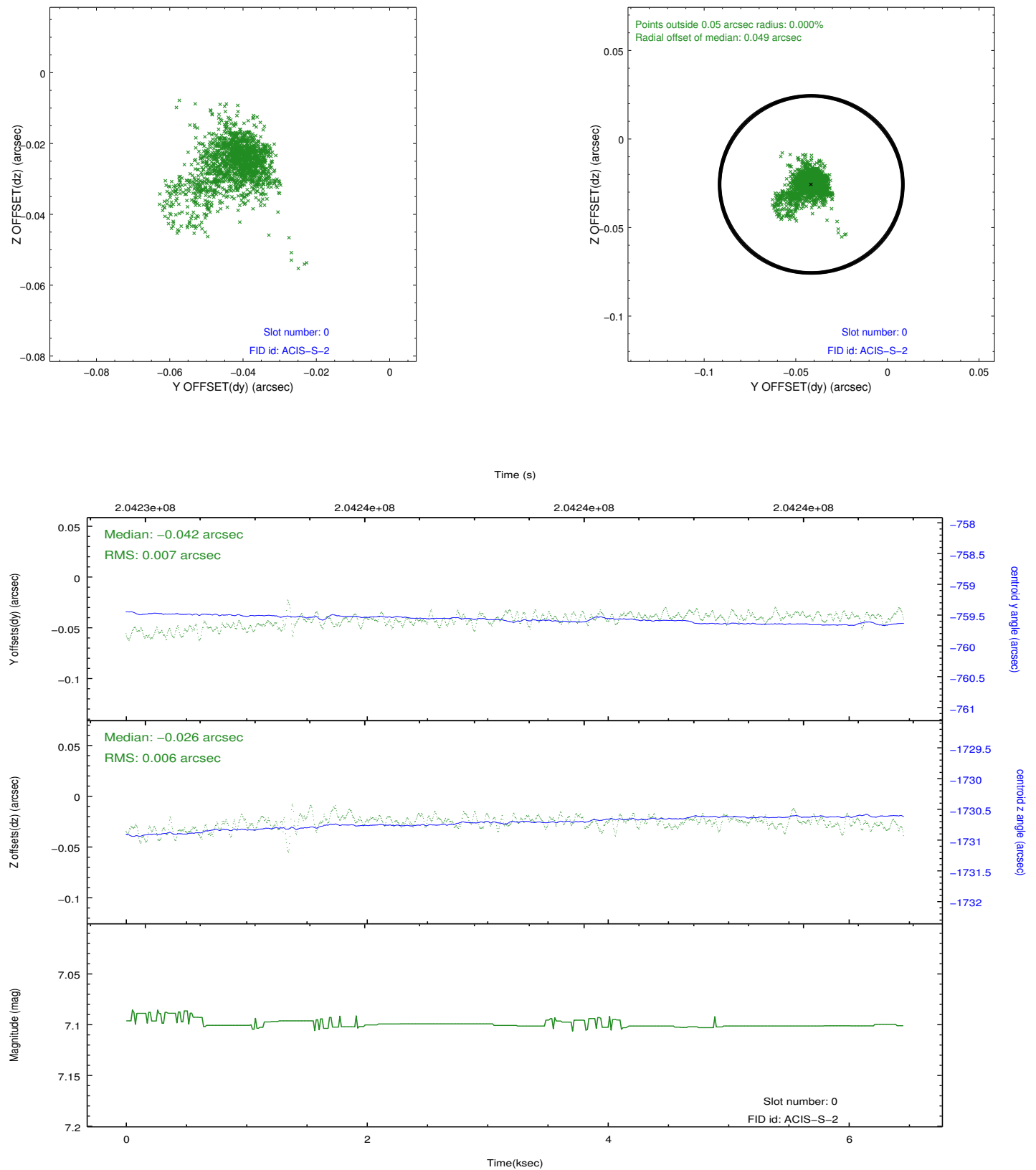


### 2.4.5 Slot 7

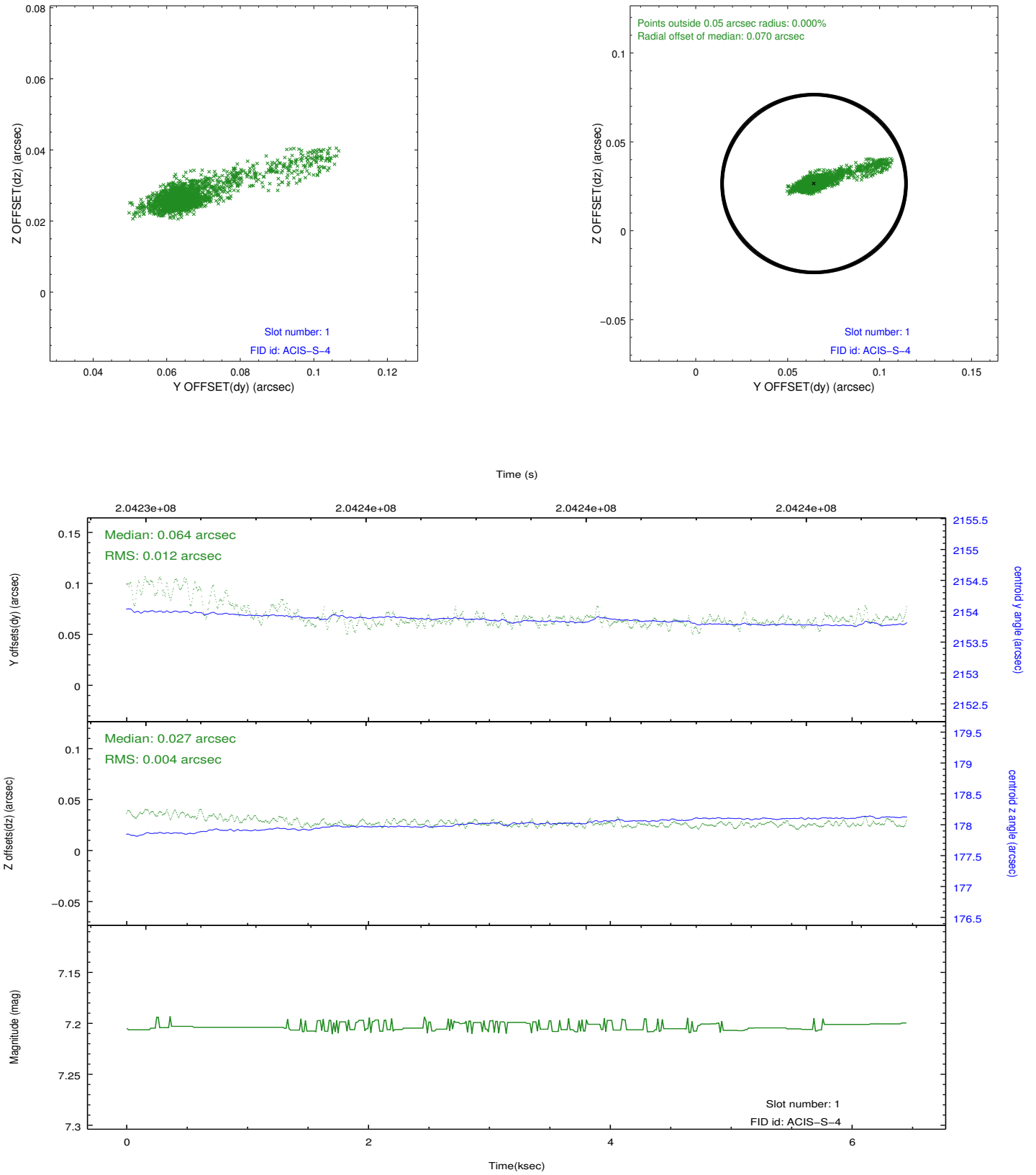


## 2.5 FID Slots

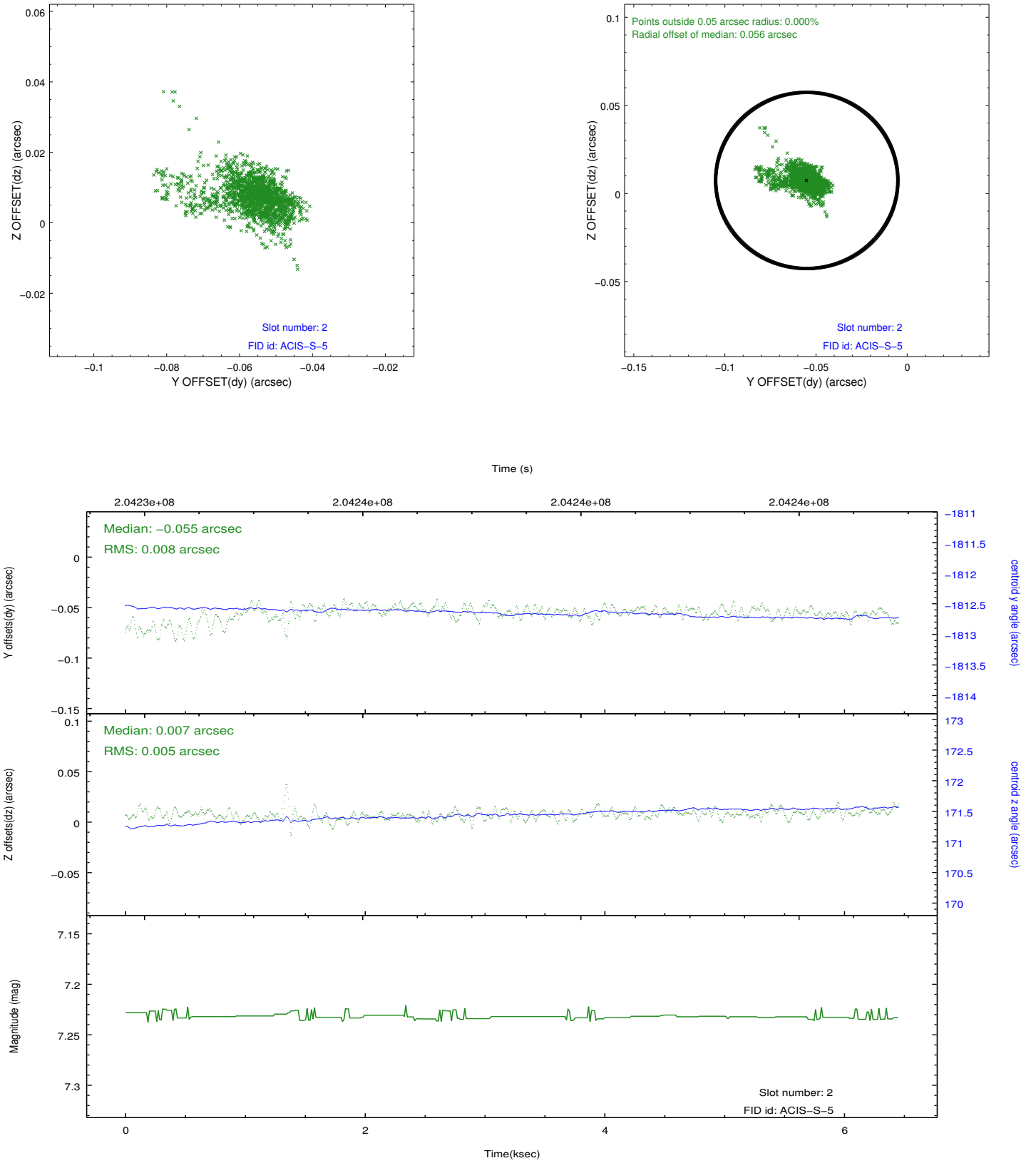
### 2.5.1 Slot 0



## 2.5.2 Slot 1



### 2.5.3 Slot 2



## A Summary

### A.1 Status

V&V Scientist	Jen Lauer
V&V Date (YYYY-MM-DD)	2012.12.18
V&V Edition	1
V&V Disposition and Status	OK
V&V Charge Time	5.724

### A.2 Comments