

# V&V Reference Report

## L2 ASCDS Version : 7.6.7.2

Observation 4739 - L2 Version 001  
Chandra X-Ray Center

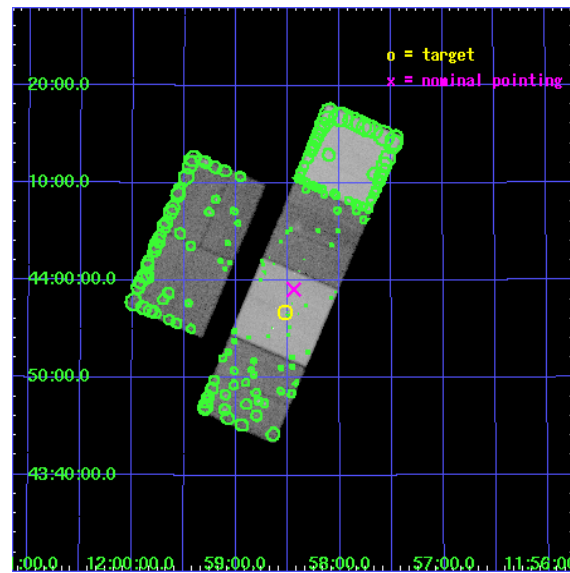
L2 Processing Date : Jun 5 2006

## Contents

<b>1</b>	<b>Front</b>	<b>2</b>
<b>2</b>	<b>OBI</b>	<b>3</b>
2.1	OBI . . . . .	3
2.1.1	Images . . . . .	3
2.1.2	Bias . . . . .	3
2.1.3	Parameters . . . . .	4
2.1.4	Events . . . . .	4
2.2	Compared Parameters . . . . .	5
2.3	Aspect . . . . .	6
2.4	Star Slots . . . . .	9
2.4.1	Slot 3 . . . . .	9
2.4.2	Slot 4 . . . . .	10
2.4.3	Slot 5 . . . . .	11
2.4.4	Slot 6 . . . . .	12
2.5	FID Slots . . . . .	13
2.5.1	Slot 0 . . . . .	13
2.5.2	Slot 1 . . . . .	14
2.5.3	Slot 2 . . . . .	15
<b>3</b>	<b>Point Sources</b>	<b>16</b>
<b>A</b>	<b>Summary</b>	<b>17</b>
A.1	Status . . . . .	17
A.2	Comments . . . . .	17

# 1 Front

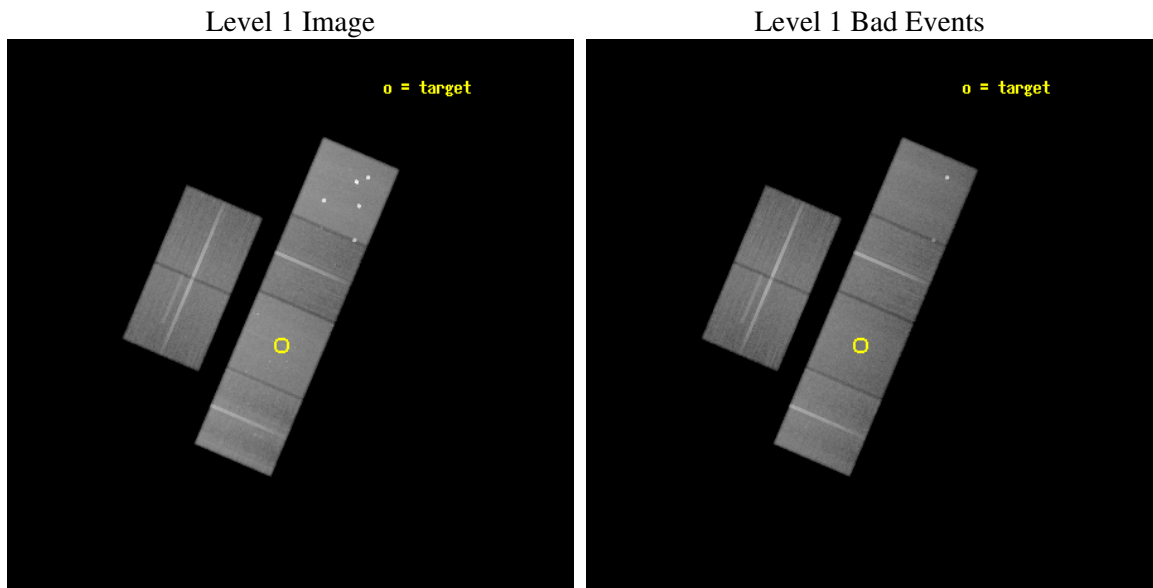
seq_num	600394
obs_id	4739
title	Searching for hot gas in the halos of normal spiral galaxies
observer	Dr David Strickland
object	NGC 4013
dtcycle	0
cycle	P
ra_targ	179.630417
dec_targ	43.946889
ra_nom	179.61060030967
dec_nom	43.985014314912
roll_nom	113.02388940161
revision	3
ontime	80115.199701548
livetime	79100.732803345
ontime2	80115.199701548
ontime3	80111.958701342
ontime5	80115.199701548
ontime6	80115.199701548
ontime7	80115.199701548
ontime8	80115.199701548
l2events	758123



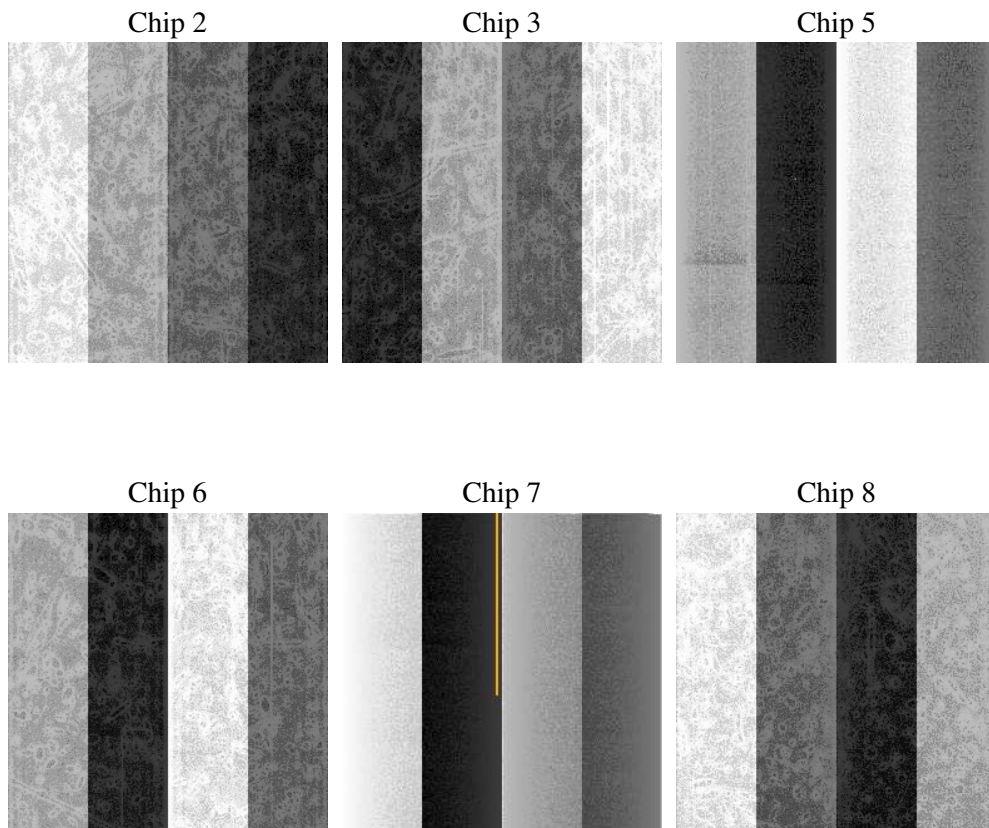
## 2 OBI

### 2.1 OBI

#### 2.1.1 Images



#### 2.1.2 Bias



### 2.1.3 Parameters

obi_num	0
ascdsver	7.6.7.2
caldsver	3.2.2
date	2006-06-05T22:50:29
revision	3

sched_exp_time	80000.000000
ontime	80117.760282099
ontime2	80117.760282099
ontime3	80114.519281894
ontime5	80117.760282099
ontime6	80117.760282099
ontime7	80117.760282099
ontime8	80117.760282099
l1events	3488146

### 2.1.4 Events

	ccd 2	ccd 3	ccd 5	ccd 6	ccd 7	ccd 8
level 1 events	487158	464335	784399	481850	661009	609395
rejected events	428277	407443	412700	421142	409133	480213
rejected %	87%	87%	52%	87%	61%	78%

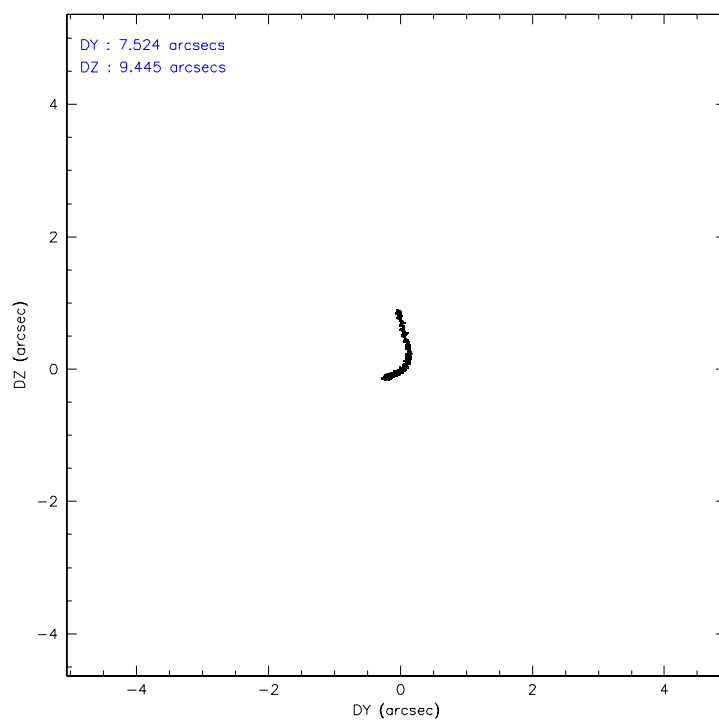
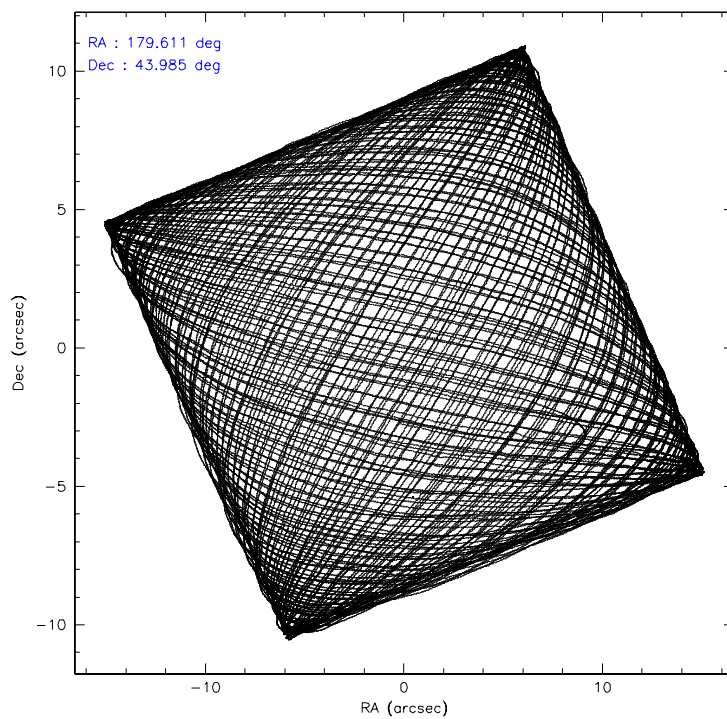
	ccd 2	ccd 3	ccd 5	ccd 6	ccd 7	ccd 8
grade 0 events	26694	25059	71710	25128	15252	43373
	5%	5%	9%	5%	2%	7%
grade 1 events	277	238	1212	269	352	378
	0%	0%	0%	0%	0%	0%
grade 2 events	11755	10667	103629	12156	62047	27914
	2%	2%	13%	2%	9%	4%
grade 3 events	5523	5509	7856	5893	12629	13330
	1%	1%	1%	1%	1%	2%
grade 4 events	5370	5689	6656	5694	12532	12372
	1%	1%	0%	1%	1%	2%
grade 5 events	19462	21449	38664	22894	44071	29958
	3%	4%	4%	4%	6%	4%
grade 6 events	9539	9972	181858	11838	149431	32197
	1%	2%	23%	2%	22%	5%
grade 7 events	408538	385752	372814	397978	364695	449873
	83%	83%	47%	82%	55%	73%

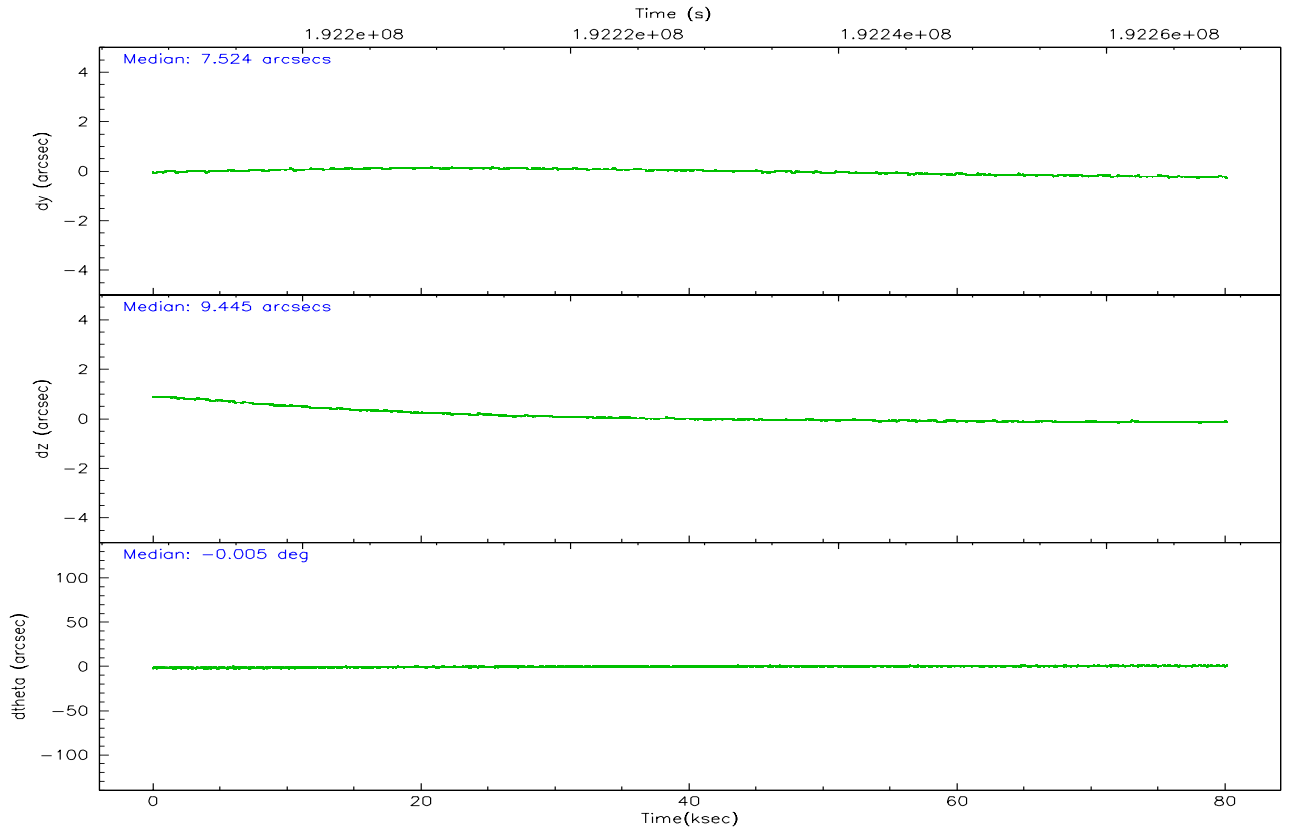
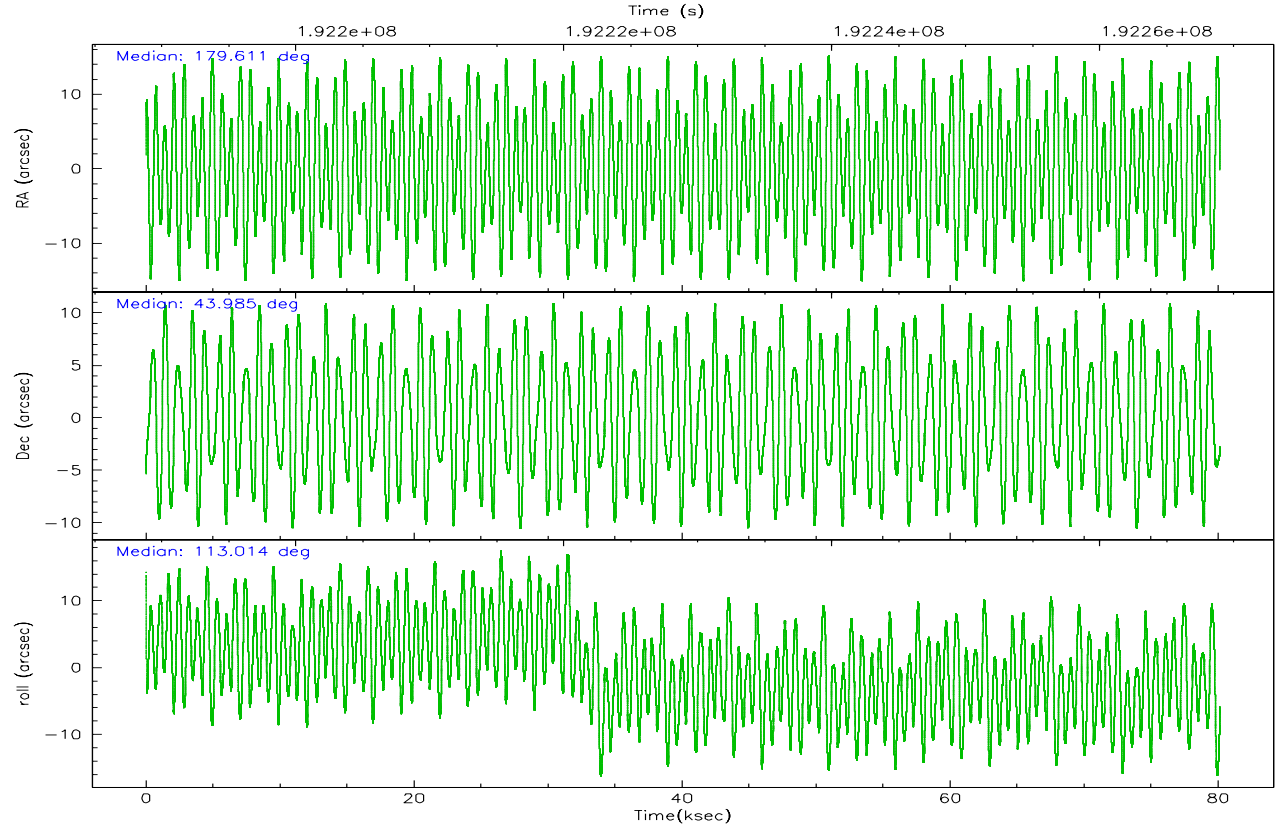


## 2.2 Compared Parameters

Parameter	Planned	Actual	Parameter	Planned	Actual
Instrument	ACIS	ACIS	Obspar format version number	6	6
Detector	ACIS-235678	ACIS-235678	Obspar file type	PREDICTED	ACTUAL
Grating	NONE	NONE	Obspar update status	NONE	UPDATED
Data mode	FAINT	FAINT	On-chip summing requested	N	N
Observation mode	POINTING	POINTING	Subarray requested	NONE	NONE
Pointing RA	179.641120	179.6106003096729	Alternating exposures requested	N	N
Pointing Dec	43.968946	43.98501431491228	Primary exposure time	0.000000	3.2
Pointing Roll	112.846068	113.0238894016105			
SIM focus pos (mm)	-0.684267	-0.6828225247311905			
SIM defocus (mm)	0	0.001444936568705701			
SIM translation stage pos (mm)	-190.132523	-190.1400660498719			
SIM translation stage offset (mm)	0	0.00754346686406393			
Observation start time	192188978.184000	192187940.33626			
Observation start date	2004-02-03T09:48:34	2004-02-03T09:32:20			
Observation end time	192268978.184000	192269596.96483			
Observation end date	2004-02-04T08:01:54	2004-02-04T08:13:16			
Read mode	TIMED	TIMED			

## 2.3 Aspect



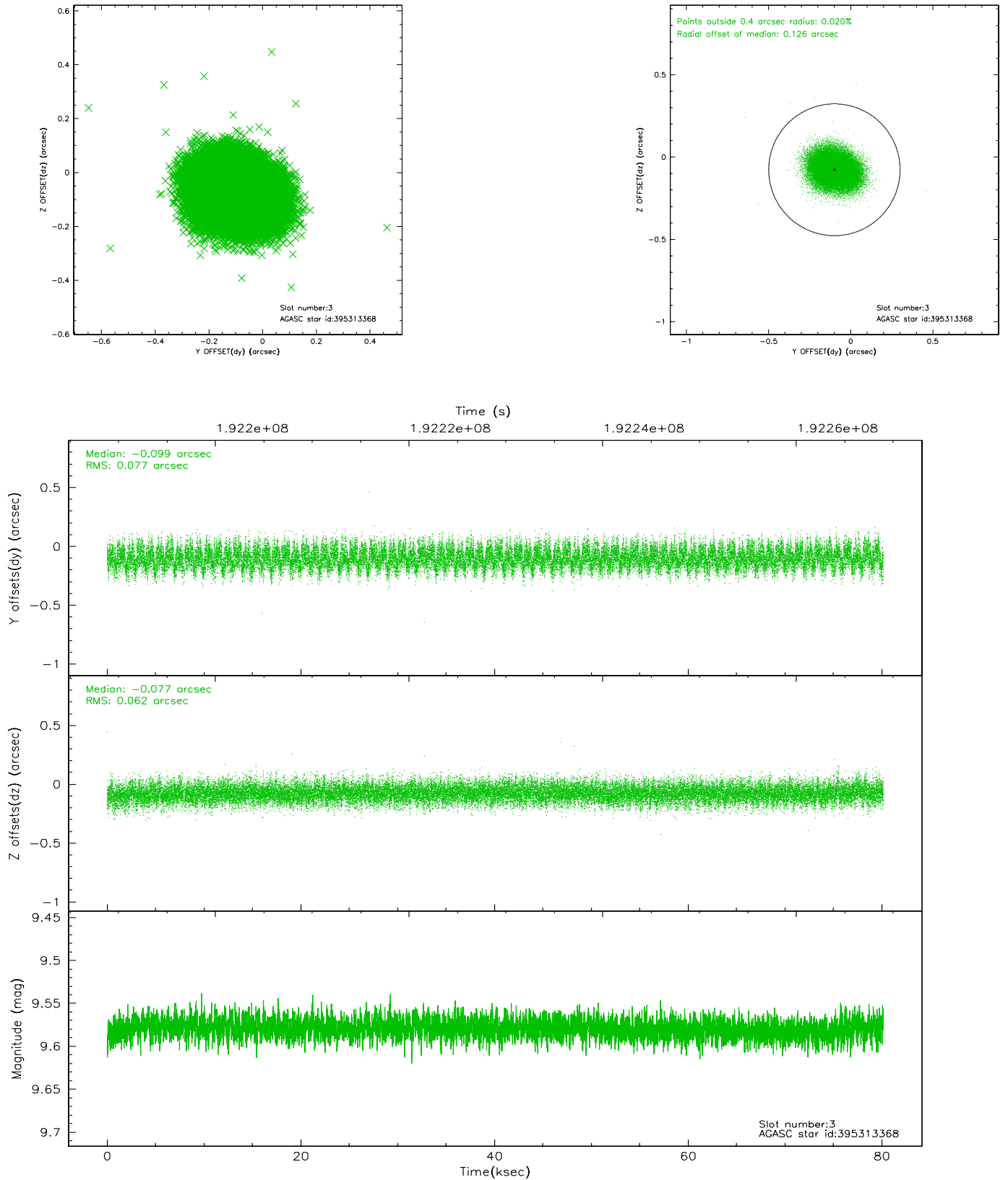


### Slot Statistics

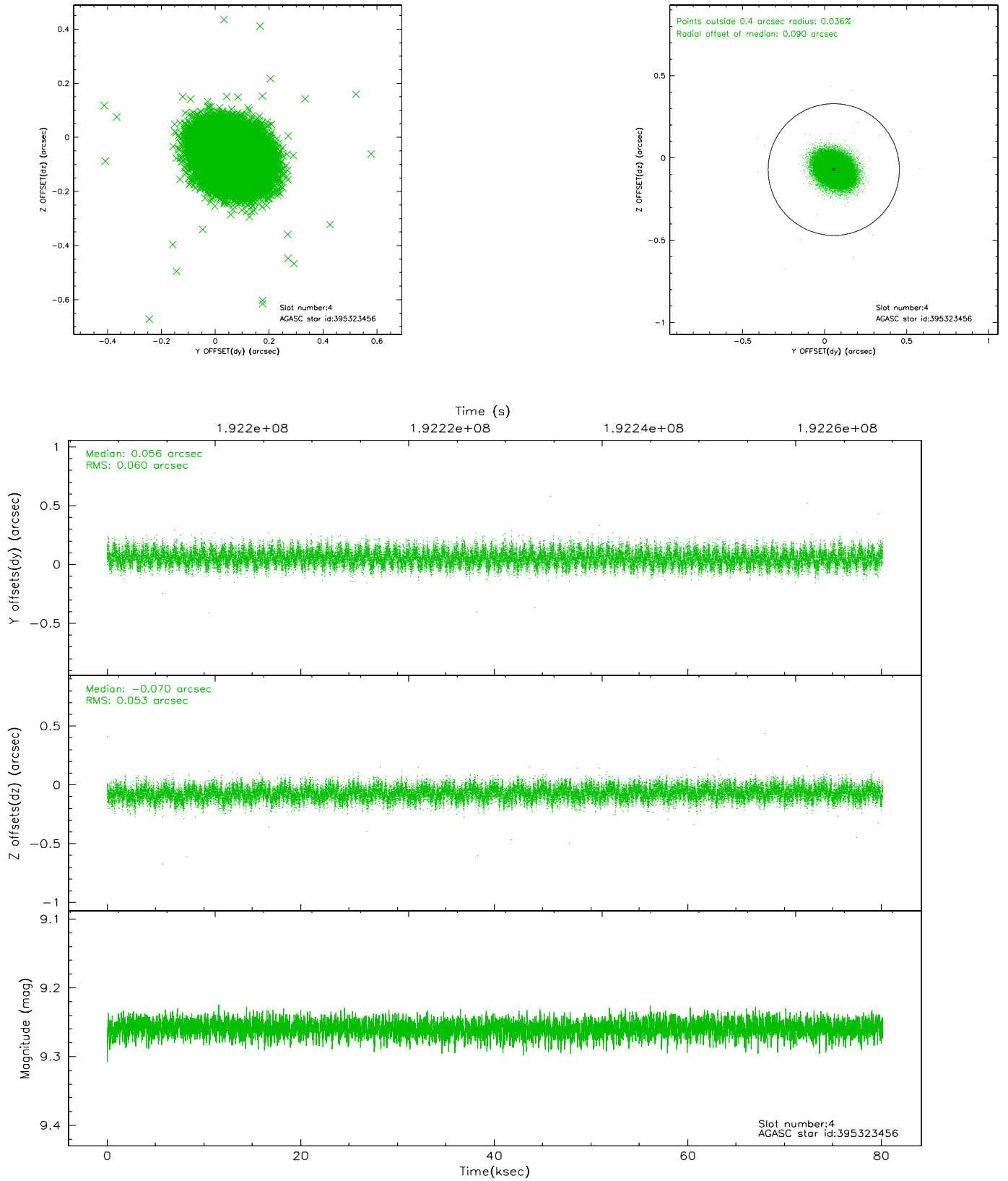
slot	status	id	mag	n_pts	med_dy	med_dz	dr1	dr2	ra	dec	mean_y	mean_z
0	FID	ACIS-S-2	7.10	19551	-0.023	-0.005	0.009	0.020	0.000000	0.000000	-760.26	-1730.81
1	FID	ACIS-S-4	7.20	19550	0.037	0.012	0.007	0.012	0.000000	0.000000	2153.08	177.80
2	FID	ACIS-S-5	7.23	19550	-0.046	0.002	0.009	0.020	0.000000	0.000000	-1813.25	171.32
3	GUIDE	395313368	9.58	39023	-0.099	-0.077	0.106	0.169	178.813385	44.022889	1020.72	1895.41
4	GUIDE	395323456	9.26	39071	0.056	-0.070	0.085	0.137	179.317981	43.364369	-1675.77	1623.76
5	GUIDE	395708616	8.02	39094	-0.032	0.039	0.076	0.120	180.101872	44.630343	1739.63	-2013.03
6	GUIDE	395722432	9.53	39079	0.079	0.111	0.099	0.161	180.355077	43.582106	-1998.39	-1178.31
7	OMITTED		0.00	0	0.000	0.000	0.000	0.000	0.000000	0.000000	0.00	0.00

## 2.4 Star Slots

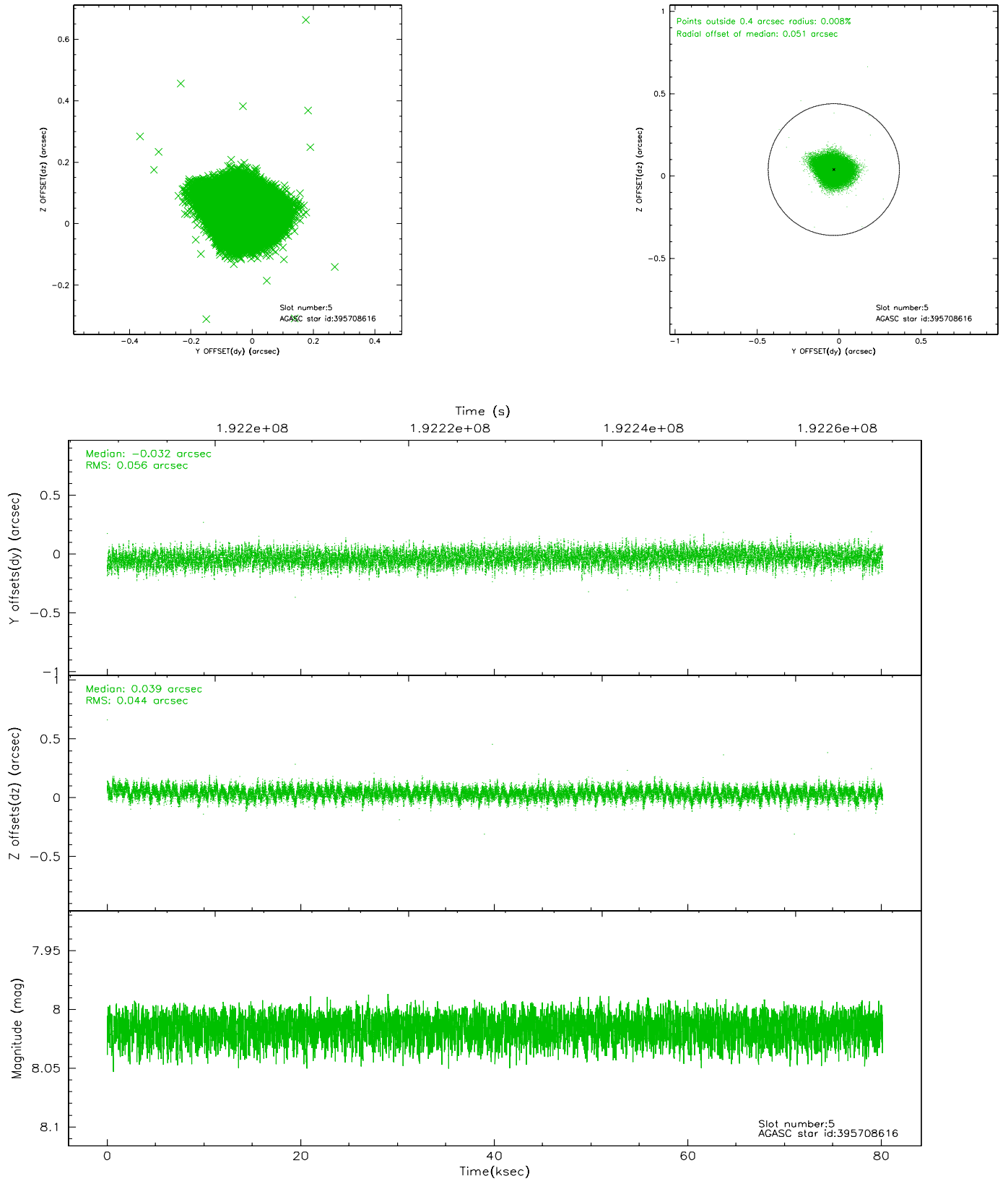
### 2.4.1 Slot 3



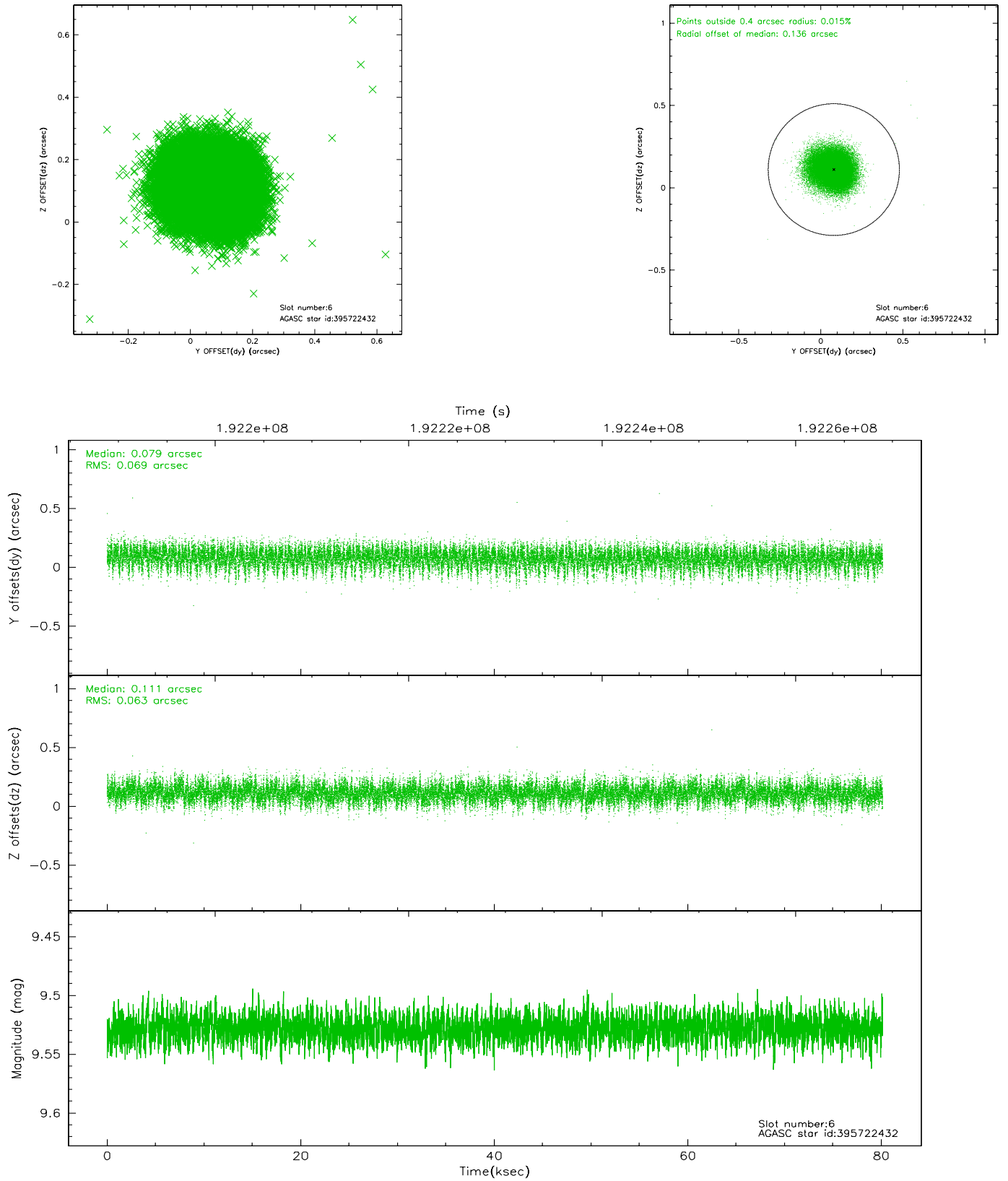
## 2.4.2 Slot 4



### 2.4.3 Slot 5



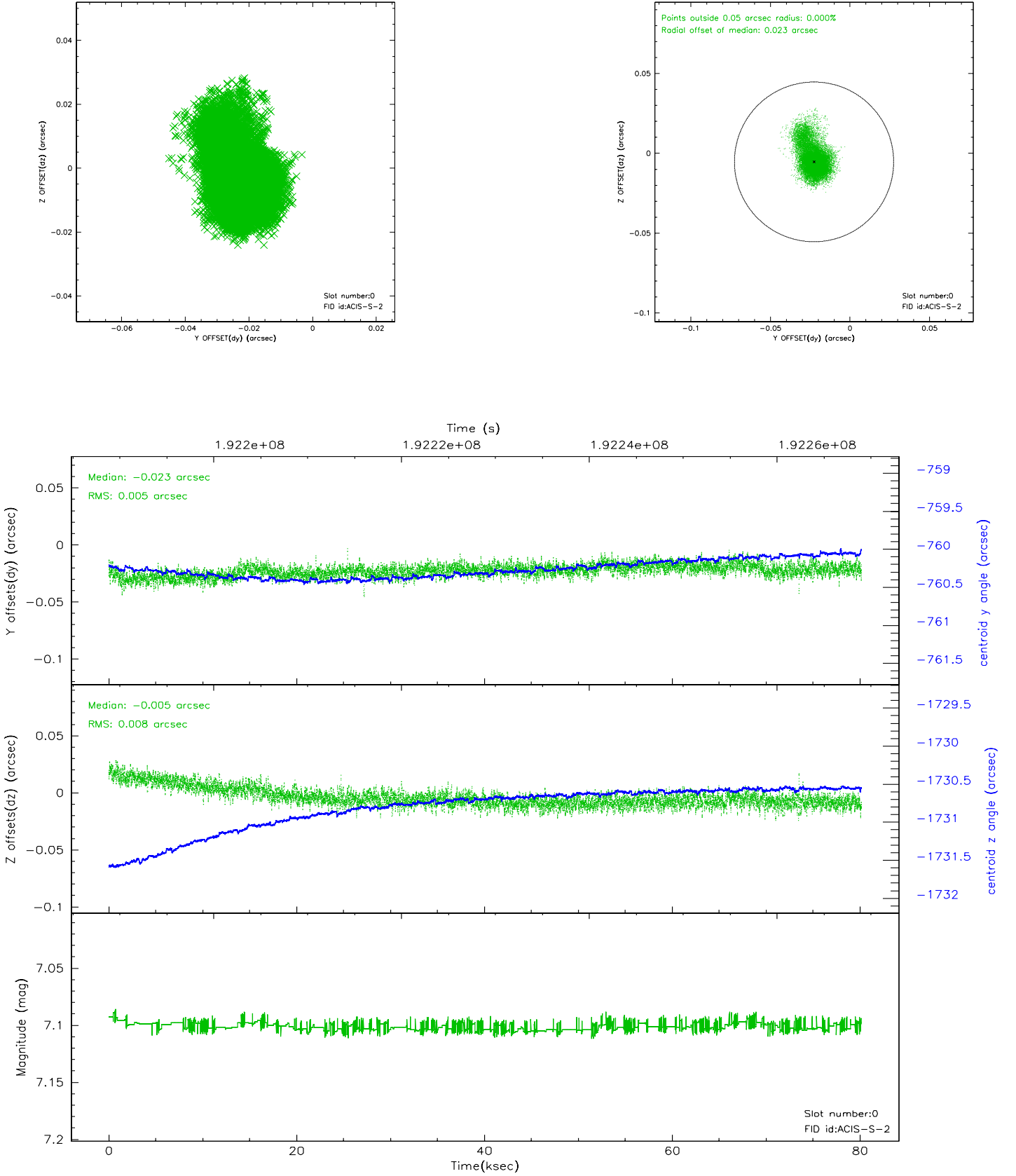
## 2.4.4 Slot 6



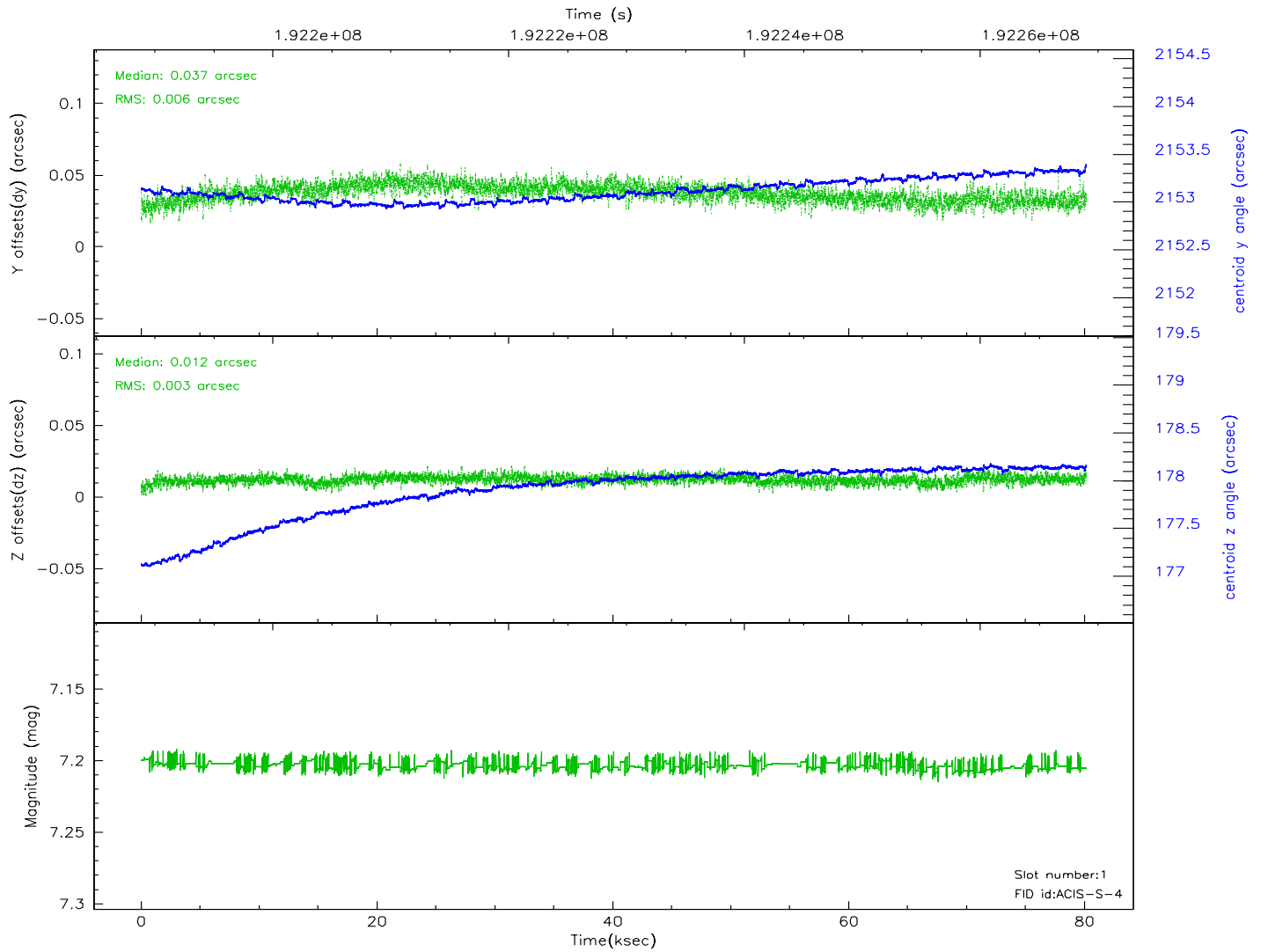
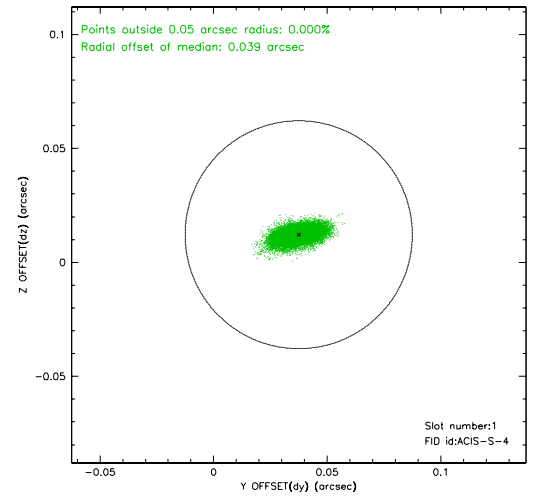
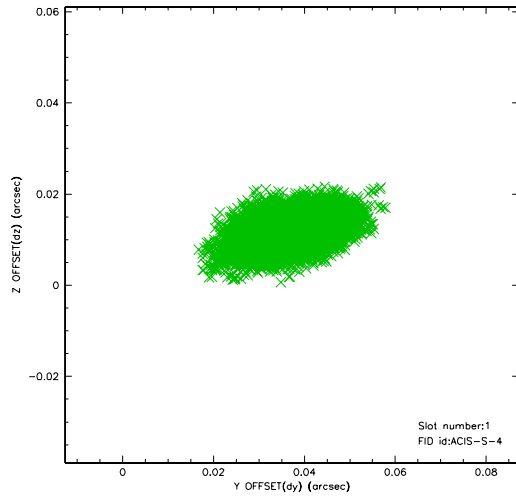


## 2.5 FID Slots

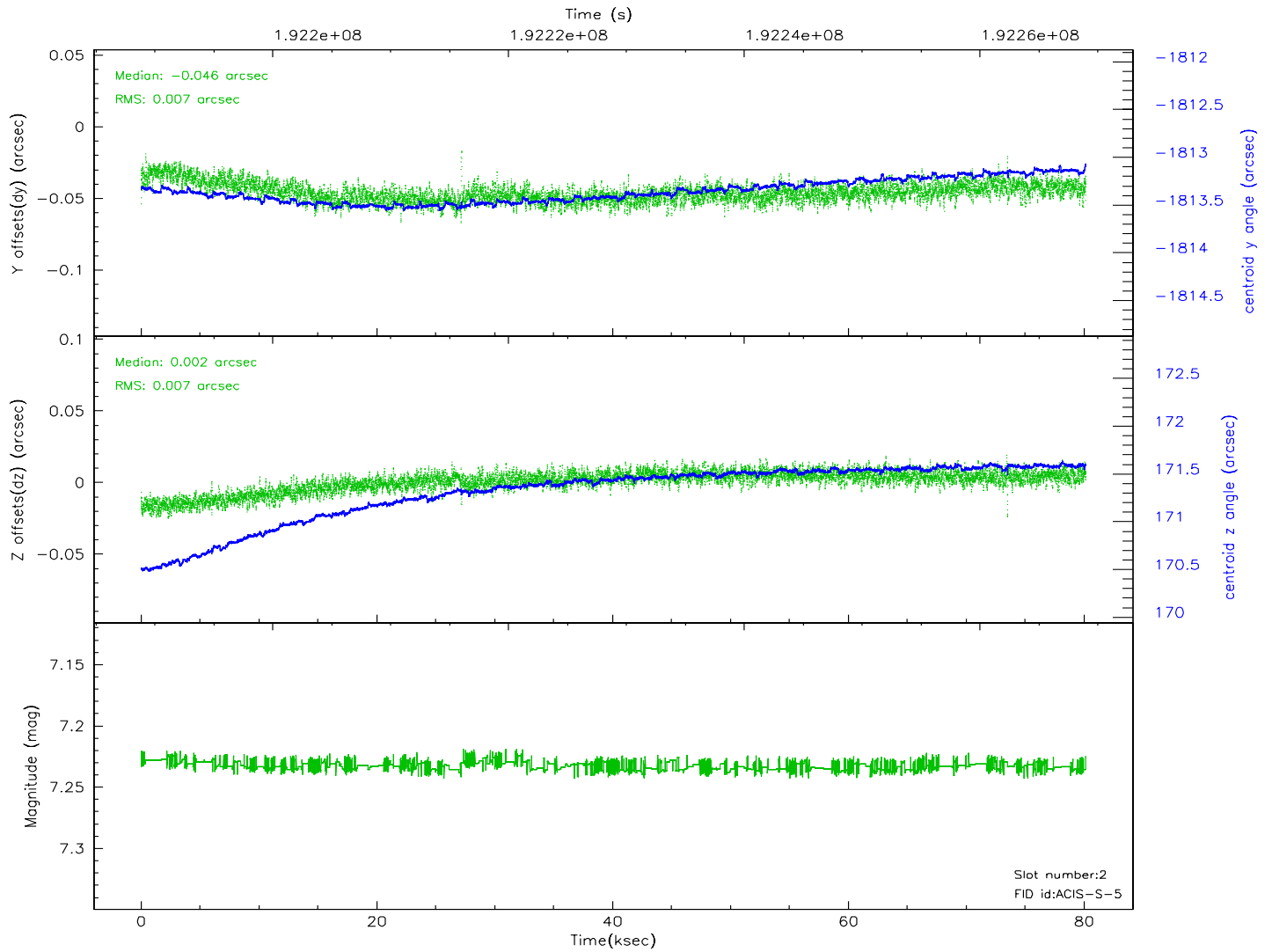
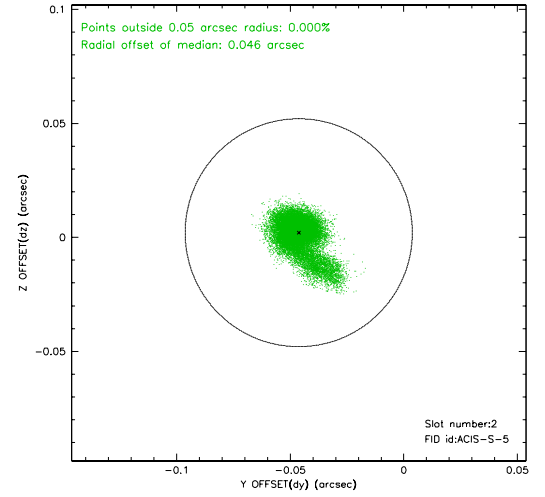
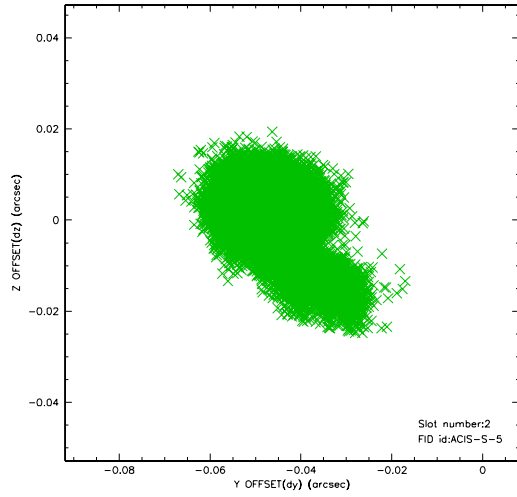
### 2.5.1 Slot 0



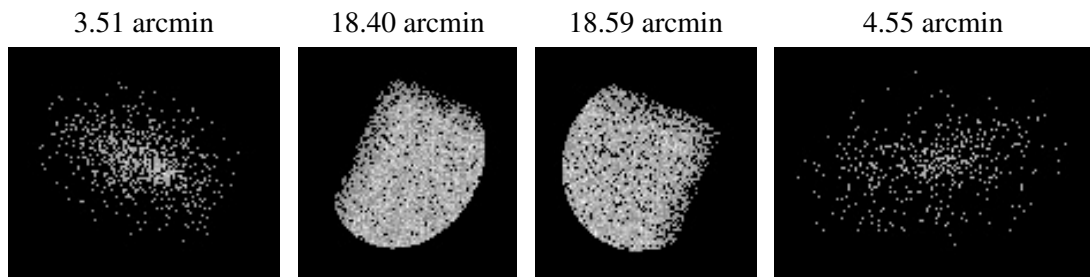
## 2.5.2 Slot 1



### 2.5.3 Slot 2



### 3 Point Sources



# A Summary

## A.1 Status

V&V Scientist	Beth Sundheim
V&V Date (YYYY-MM-DD)	2010.10.04
V&V Edition	2
V&V Disposition and Status	OK
V&V Charge Time	80.115

## A.2 Comments

The guide star in slot 7 was manually excluded from the processing due to poor data quality.